



Sized for X-Small (Small, Medium, Large). Shown in size X-Small on page 46.

### THE MEASUREMENTS

**Bust** 26 (30, 34, 38)"/66 (76, 86.5, 96.5)cm

**Length** 13 1/2 (13 1/2, 14, 14 1/2)"/34.5 (34.5, 35.5, 37)cm

### THE GAUGE

24 sts and 32 rows to 4"/10cm over St st using size 5 (3.75mm) needles.  
BE SURE TO GET THE GAUGE.

### THE PATTERNS

**the k2, p2 rib** (multiple of 4 sts plus 2)

*Row 1 (RS)* K2, \*p2, k2; rep from \* to end.

*Row 2* P2, \*k2, p2; rep from \* to end. Rep rows 1 and 2 for k2, p2 rib.

**the stripe pattern**

\*12 rows Lily White, 12 rows Royal Blue; rep from \* (24 rows) for stripe pat.

### THE NOTES

■ When changing colors, twist yarns on WS to prevent holes in work. Use separate bobbins of yarn for each block of color.

■ If desired, work a strand of elastic thread along with yarn when working ribbing for a tighter fit.

### MAKE THE FRONT

■ With Royal Blue, cast on 78 (90, 102, 114) sts. Work in k2, p2 rib for 1 1/2 (1 1/2, 1 3/4, 2)"/4 (4, 4.5, 5)cm. Work in St st and stripe pat for 18 rows.

### BEGIN THE CHART

■ *Next row (RS)* Cont in stripe pat for background, work 19 (25, 31, 37) sts, work 40 sts of chart, work 19 (25, 31, 37) sts. After all 60 rows of chart have been worked, cont in stripe pat for 6 rows more.

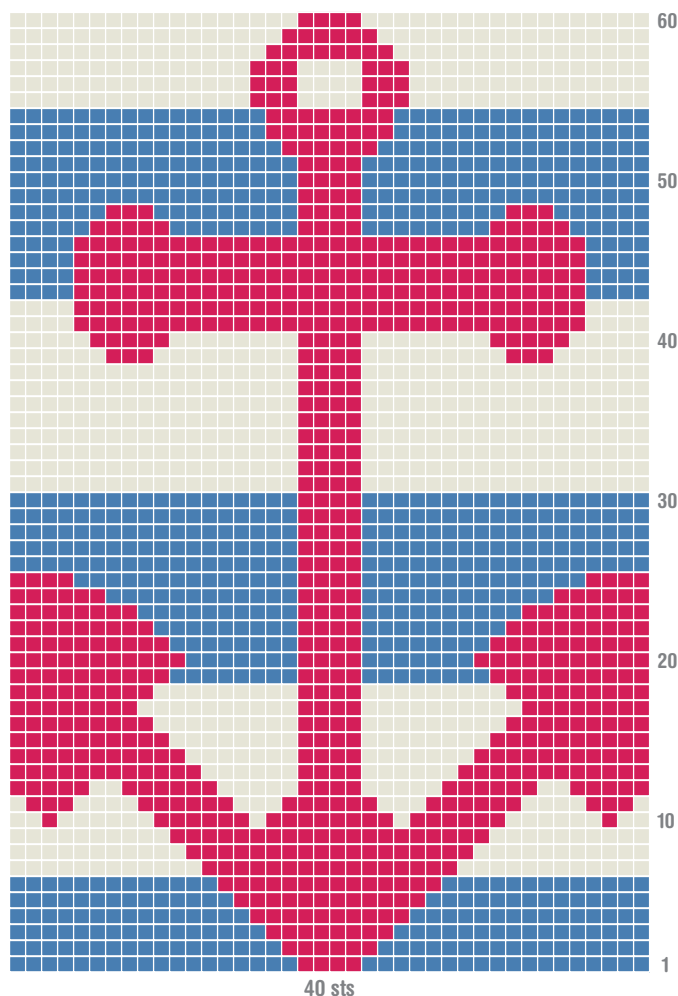
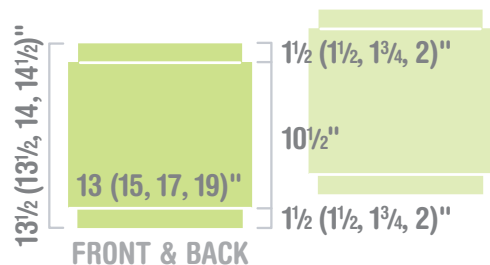
Change to Royal Blue and work in k2, p2 rib for 1 1/2 (1 1/2, 1 3/4, 2)"/4 (4, 4.5, 5)cm. Bind off loosely in rib.

### MAKE THE BACK

■ Work same as front, omitting chart motif.

### FINISH THE TOP

■ Sew side seams. 🧵



### color key

- royal blue
- lily white
- cherry red