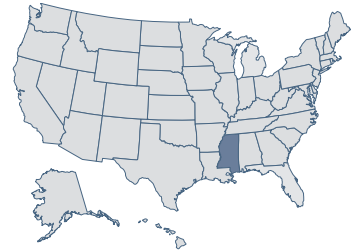


# Mississippi

**39** Economic Performance  
Rank: 2009

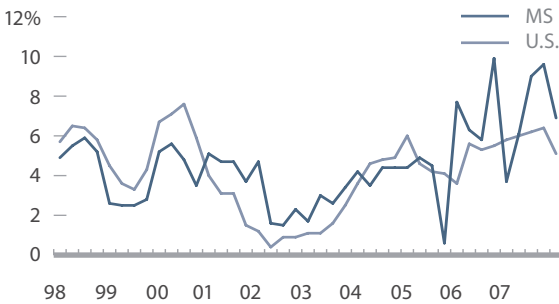
**19** Economic Outlook  
Rank: 2009



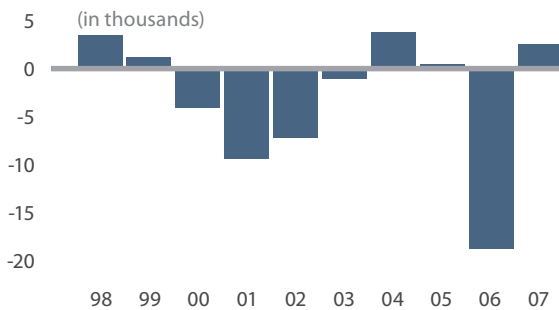
**Economic Performance Rank** (1=best 50=worst)

A historical measure based on a state's performance (equally weighted average) in the three important performance variables shown below. These variables are highly influenced by state policy.

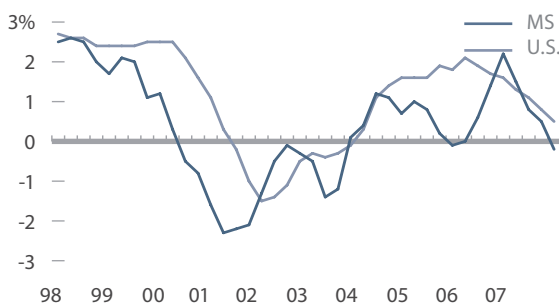
**Personal Income Per Capita Cumulative Growth 1997-2007** **52.8%** **Rank: 23**



**Absolute Domestic Migration Cumulative 1998-2007** **-28,933** **Rank: 33**



**Non-Farm Payroll Employment Cumulative Growth 1997-2007** **4.0%** **Rank: 46**



**Economic Outlook Rank** (1=best 50=worst)

A forecast based on a state's standing (equally weighted average) in the 15 important state policy variables shown below. Data reflect state + local rates and revenues and any effect of federal deductibility.

Historical Ranking Comparison  
**2008 ECONOMIC OUTLOOK RANK**

**19**

Variable	Data	Rank
Top Marginal Personal Income Tax Rate	5.00%	17
Top Marginal Corporate Income Tax Rate	5.00%	8
Personal Income Tax Progressivity (change in tax liability per \$1,000 of income)	\$7.53	26
Property Tax Burden (per \$1,000 of personal income)	\$27.47	18
Sales Tax Burden (per \$1,000 of personal income)	\$31.66	43
Remaining Tax Burden (per \$1,000 of personal income)	\$16.38	13
Estate/Inheritance Tax Levied?	No	1
Recently Legislated Tax Changes (2007 & 2008, per \$1,000 of personal income)	\$0.25	33
Debt Service as a Share of Tax Revenue	6.0%	10
Public Employees Per 10,000 of Population (full-time equivalent)	648.0	45
State Liability System Survey (tort litigation treatment, judicial impartiality, etc.)	43.7	48
State Minimum Wage (federal floor is \$6.55)	\$6.55	1
Average Workers' Compensation Costs (per \$100 of payroll)	\$2.33	27
Right-to-Work State? (option to join or support a union)	Yes	1
Number of Tax or Expenditure Limits (0= least/worst, 3=most/best)	1	13