


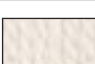
Patons® Classic Wool

Patons® DECOR



SNOW FLAKE SWEATER AND HAT
(TO KNIT)

To fit bust measurement	
Extra-Small/Small	28-34 ins [71-86.5 cm]
Medium	36-38 ins [91.5-96.5 cm]
Large	40-42 ins [101.5-106.5 cm]
Extra-Large	44-46 ins [112-117 cm]
2/3 Extra-Large	48-54 ins [122-137 cm]
4/5 Extra-Large	56-62 ins [142-157.5 cm]
Finished bust	
X-Small/Small	36½ ins [92.5 cm]
Medium	40½ ins [103 cm]
Large	44½ ins [113 cm]
X-Large	48½ ins [123 cm]
2/3 X-Large	57 ins [144.5 cm]
4/5 X-Large	65 ins [165 cm]

Patons® Classic Merino Wool (100 g/3.5 oz)							
SWEATER	XS/S	M	L	XL	2/3XL	4/5XL	
 Main Color (MC) (00207 Rich Red)	5	5	6	7	8	8	balls
 Contrast A (00201 Winter White)	1	1	1	1	2	2	ball(s)
HAT: 1 ball each of Main Color (MC) and Contrast A.							
OR							
Patons® Decor (100 g/3.5 oz)							
SWEATER	XS/S	M	L	XL	2/3XL	4/5XL	
 Main Color (MC) (01714 Barn Red)	5	5	6	7	8	8	balls
 Contrast A (01614 Winter White)	1	1	1	1	2	2	ball(s)
HAT: 1 ball each of Main Color (MC) and Contrast A.							
Sizes 4 mm (U.S. 6), 4.5 mm (U.S. 7) and 5 mm (U.S. 8) knitting needles or size needed to obtain tension. 1 st holder for Sweater.							

TENSION

20 sts and 26 rows = 4 ins [10 cm] with
4.5 mm needles in stocking st.

INSTRUCTIONS

The instructions are written for smallest size. If changes are necessary for larger sizes the instructions will be written thus (). Numbers for each size are shown in the same color throughout the pattern. When only one number is given in black, it applies to all sizes.

Note: When working from chart, carry yarn not in use loosely across wrong side of work, but never over more than 5 sts. When it must pass over more than 5 sts, weave it over and under color in use on next st or at center point of sts it passes over. The colors are never twisted around one another.

BACK

With 4 mm needles and MC, cast on **91 (101-111-121-143-163) sts.
1st row: (RS). K1. *P1. K1. Rep from * to end of row.
2nd row: P1. *K1. P1. Rep from * to end of row.
Change to 4.5 mm needles and, beg with a

knit row, work 4 rows in stocking st.

Change to 5 mm needles and work Chart I in stocking st to end of chart, reading **knit** rows from **right** to left and **purl** rows from **left** to right, noting 16-st rep will be worked **5 (6-6-7-8-10)** times.

Change to 4.5 mm needles and beg with a purl row, work 7 rows in stocking st.

Change to 5 mm needles and work Chart I to end of chart. Break A.**

Change to 4.5 mm needles, MC and cont in stocking st until work from beg measures 14½ ins [37 cm], ending with a purl row.

Shape armholes: Cast off **6 (7-10-13-19-19)** sts beg next 2 rows. **79 (87-91-95-105-125)** sts.

Next row: (RS). K2. K2tog. Knit to last 4 sts. ssk. pssso. K2.

Next row: P2. P2togtbl. Purl to last 4 sts. P2tog. P2.

Rep last 2 rows **1 (2-2-3-3-7)** time(s) more. **71 (75-79-79-89-93)** sts.



ABBREVIATIONS: www.patonsyarns.com/glossary

Patons®

... a part of your life.

P.O. Box 40, Listowel ON N4W 3H3

Next row: (RS). K2. K2tog. Knit to last 4 sts. ssk. K2.

Next row: Purl.

Rep last 2 rows **2 (4-4-4-5-5)** times more. **65 (65-69-69-77-81)** sts.

Cont even until armhole measures **8 (8½-9-9½-10-11)** ins [**20.5 (21.5-23-24-25.5-28)** cm], ending with a purl row.

Shape shoulders: Cast off **7 (7-8-8-9-9)** sts beg next 2 rows, then **8 (8-8-8-9-9)** sts beg following 2 rows. Leave rem **35 (35-37-37-41-45)** sts on a st holder.

FRONT

Work from ** to ** as given for Back.

Change to 4.5 mm needles. With MC, cont in stocking st until work from beg measures 14 rows less than Back to armhole shaping, ending with a purl row.

Shape V-neck: 1st row: K**42 (47-52-57-68-78)**. K2tog. K1. **Turn.** Leave rem sts on a spare needle.

2nd row: Purl.

3rd row: Knit to last 3 sts. K2tog. K1.

Rep last 2 rows **1 (1-1-1-3-3)** time(s) more. **42 (47-52-57-66-76)** sts.

Work 3 rows even.

Next row: As 3rd row.

Rep last 4 rows **1 (1-1-1-0-0)** time more. **40 (45-50-55-65-75)** sts.

Next row: Purl.

Shape armhole: 1st row: (RS). Cast off **6 (7-10-13-19-19)** sts. Knit to end of row. **34 (38-40-42-46-56)** sts.

2nd row: Purl.

3rd row: K2. K2tog. Knit to last 3 sts. K2tog. K1.

4th row: Purl to last 4 sts. P2tog. P2.

5th row: K2. K2tog. Knit to end of row.

6th row: As 4th row.

Rep last 4 rows **0 (1-1-1-1-3)** time(s) more. **29 (28-30-32-36-36)** sts.

Proceed as follows:

1st row: (RS). K2. K2tog. Knit to last 3 sts. K2tog. K1.

2nd row: Purl.

3rd row: K2. K2tog. Knit to end of row.

4th row: Purl.

Rep last 4 rows **0 (0-0-1-2-2)** time(s) more, then 1st and 2nd rows **1 (1-1-1-0-0)** time more. **24 (23-25-24-27-27)** sts.

Next row: (RS). Knit to last 3 sts. K2tog. K1.

Work 3 rows even.

Rep last 4 rows **8 (7-8-7-8-8)** times more. **15 (15-16-16-18-18)** sts.

Cont even until armhole measures same length as Back to shoulder, ending with a purl row.

Shape shoulder: Cast off **7 (7-8-8-9-9)** sts beg next row. Work 1 row even. Cast off rem **8 (8-8-8-9-9)** sts.

With RS of work facing, slip next st from spare needle onto a safety pin. Join yarn to rem sts and proceed as follows: K1. ssk. Knit to end of row. **44 (49-54-59-70-80)** sts.

2nd row: Purl.

3rd row: K1. ssk. Knit to end of row.

Rep last 2 rows **1 (1-1-1-3-3)** time(s) more. **42 (47-52-57-66-76)** sts.

Work 3 rows even.

Next row: As 3rd row.

Rep last 4 rows **1 (1-1-1-0-0)** time more. **40 (45-50-55-65-75)** sts.

Next row: Purl.

Next row: Knit.

Shape armhole: 1st row: (WS). Cast off **6 (7-10-13-19-19)** sts. Purl to end of row. **34 (38-40-42-46-56)** sts.

2nd row: K1. ssk. Knit to last 4 sts. ssk. K2.

3rd row: P2. P2tog. Purl to end of row.

4th row: Knit to last 4 sts. ssk. K2.

5th row: As 3rd row.

Rep last 4 rows **0 (1-1-1-1-3)** time(s) more. **29 (28-30-32-36-36)** sts.

Proceed as follows:

1st row: (RS). K1. ssk. Knit to last 4 sts. ssk.

2nd row: Purl.

3rd row: Knit to last 4 sts. ssk. K2.

4th row: Purl.

Rep last 4 rows **0 (0-0-1-2-2)** time(s) more, then 1st and 2nd rows **1 (1-1-1-0-0)** time more. **24 (23-25-24-27-27)** sts.

Next row: (RS). K1. ssk. Knit to end of row. Work 3 rows even.

Rep last 4 rows **8 (7-8-7-8-8)** times more. **15 (15-16-16-18-18)** sts.

Cont even until armhole measures same length as Back to shoulder, ending with a knit row.

Shape shoulder: Cast off **7 (7-8-8-9-9)** sts beg next row. Work 1 row even. Cast off rem **8 (8-8-8-9-9)** sts.

SLEEVES

With 4 mm needles and MC, cast on **45 (45-49-49-51-51)** sts.

1st row: (RS). K1. *P1. K1. Rep from * to end of row.

2nd row: P1. *K1. P1. Rep from * to end of row.

Change to 4.5 mm needles and proceed in stocking st, inc 1 st each end of next and every following **8th (8th-8th-6th-4th-4th)** row to **61 (71-75-81-79-95)** sts, then every following **10th (10th-10th-8th-6th-6th)** row to **69 (73-77-85-91-99)** sts.

Cont even until work from beg measures **18 (18-18½-18½-17½-17)** ins [**45.5 (45.5-47-47-44.5-43)** cm], ending with a purl row.

Shape top: Cast off **4 (5-6-8-11-11)** sts beg next 2 rows. **61 (63-65-69-69-77)** sts.

Next row: (RS). K2. K2tog. Knit to last 4 sts. ssk. K2.

Next row: Purl.

Rep last 2 rows to **31 (31-31-35-27-35)** sts.

Next row: (RS). ssk. Knit to last 2 sts. K2tog.

Next row: P2tog. Purl to last 2 sts. P2togtbl.

Rep last 2 rows to 13 sts. Cast off.

FINISHING

Pin garment pieces to measurements. Cover with a damp cloth, leaving cloth to dry.

 Patons®

... a part of your life.

P.O. Box 40, Listowel ON N4W 3H3

V-Neckband: Sew right shoulder seam.

With RS of work facing and 4 mm needles, pick up and knit **56 (60-62-62-66-74)** sts down left front neck edge. K1 from safety pin and mark this st as center front. Pick up and knit **56 (60-62-62-66-74)** sts up right front neck edge. **K35 (35-37-37-41-45)** from back st holder, dec 1 st at center. **147 (155-161-161-173-193)** sts.

2nd row: (WS). P1. *K1. P1. Rep from * to end of row.

3rd row: K1. *P1. K1. Rep from * to 1 st before marked st. Sl2. K1. p2sso. **K1. P1. Rep from ** to last st. K1.

Cast off in ribbing.

Sew left shoulder and neckband seam. Sew in Sleeves. Sew side and sleeve seams.

HAT

With 4 mm needles and MC, cast on 95 sts.

1st row: (RS). With A, K1. *P1. K1. Rep from * to end of row.

2nd row: P1. *K1. P1. Rep from * to end of row.

3rd and 4th rows: With MC, as 1st and 2nd rows.

5th and 6th rows: With A, as 1st and 2nd rows, inc 10 sts evenly across last row. 105 sts.

Change to 4.5 mm needles, MC and work 6 rows in stocking st.

Next row: Knit 1st row of Chart II, reading row from **right** to left and noting that 26-st rep will be worked 4 times.

Next row: Purl 2nd row of Chart II, reading row from **left** to right.

Chart II is now in position.

Cont working Chart II to end of chart. Break A.

With MC, beg with a purl row, work 7 rows in stocking st.

Shape top: 1st row: (RS). *K11. K2tog. Rep from * to last st. K1. 97 sts.

2nd row: Purl.

3rd row: *K10. K2tog. Rep from * to last st. K1. 89 sts.

4th row: P1. *P2tog. P9. Rep from * to end of row. 81 sts.

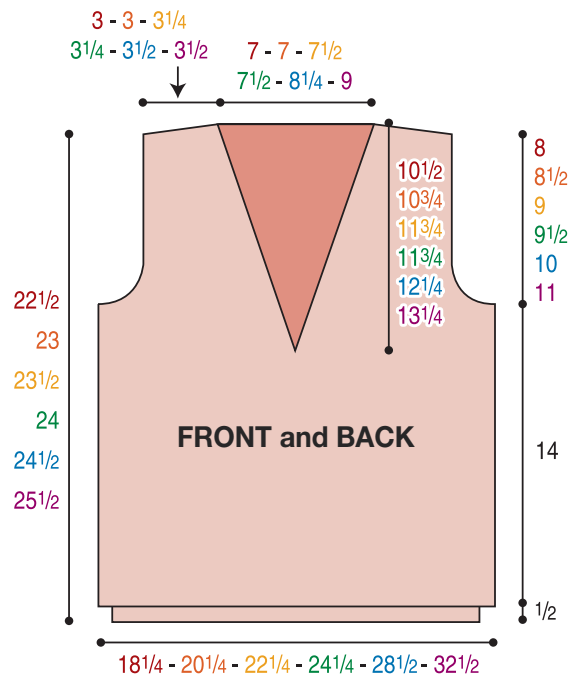
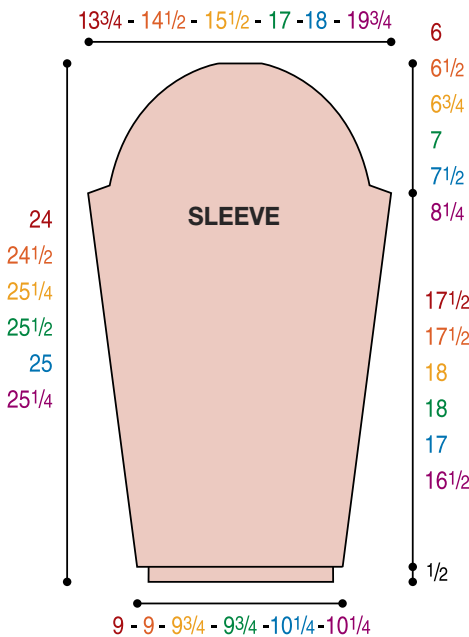
5th row: *K2. K2tog. Rep from * to last st. K1. 61 sts.

6th row: Purl.

7th row: *K2tog. Rep from * to last st. K1. 31 sts.

8th row: P1. *P2tog. Rep from * to end of row. 16 sts.

Break yarn leaving an end 15 ins [38 cm] long. Thread through rem sts. Draw up and fasten securely. Sew back seam.



Patons

... a part of your life.

P.O. Box 40, Listowel ON N4W 3H3

CHART I

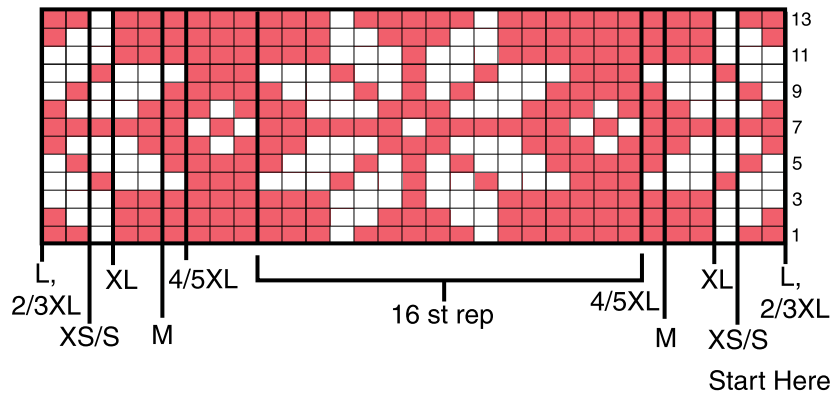
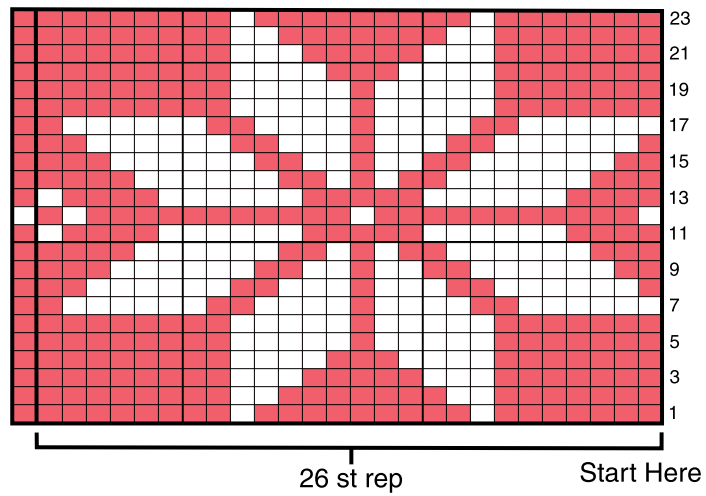


CHART II



KEY

■ = MC

□ = Contrast A

Patons

... a part of your life.

P.O. Box 40, Listowel ON N4W 3H3