

**COREL**<sup>TM</sup> for Windows<sup>®</sup>  
**Grafigo**<sup>TM</sup> **2**  
Ideas go here™ 

---

Reviewer's Guide

Product specifications, pricing, packaging, technical support and information (“Specifications”) refer to the United States retail English version only. The United States retail version is available only within North America and is not for export. Specifications for all other versions (including language versions and versions available outside of North America) may vary.

INFORMATION IS PROVIDED BY COREL ON AN “AS IS” BASIS, WITHOUT ANY OTHER WARRANTIES OR CONDITIONS, EXPRESS OR IMPLIED, INCLUDING, BUT NOT LIMITED TO, WARRANTIES OF MERCHANTABILITY, SATISFACTORY QUALITY, MERCHANTABILITY OR FITNESS FOR A PARTICULAR PURPOSE, OR THOSE ARISING BY LAW, STATUTE, USAGE OF TRADE, COURSE OF DEALING OR OTHERWISE. THE ENTIRE RISK AS TO THE RESULTS OF THE INFORMATION PROVIDED OR ITS USE IS ASSUMED BY YOU. COREL SHALL HAVE NO LIABILITY TO YOU OR ANY OTHER PERSON OR ENTITY FOR ANY INDIRECT, INCIDENTAL, SPECIAL, OR CONSEQUENTIAL DAMAGES WHATSOEVER, INCLUDING, BUT NOT LIMITED TO, LOSS OF REVENUE OR PROFIT, LOST OR DAMAGED DATA OR OTHER COMMERCIAL OR ECONOMIC LOSS, EVEN IF COREL HAS BEEN ADVISED OF THE POSSIBILITY OF SUCH DAMAGES, OR THEY ARE FORESEEABLE. COREL IS ALSO NOT LIABLE FOR ANY CLAIMS MADE BY ANY THIRD PARTY. COREL'S MAXIMUM AGGREGATE LIABILITY TO YOU SHALL NOT EXCEED THE COSTS PAID BY YOU TO PURCHASE THE MATERIALS. SOME STATES/COUNTRIES DO NOT ALLOW EXCLUSIONS OR LIMITATIONS OF LIABILITY FOR CONSEQUENTIAL OR INCIDENTAL DAMAGES, SO THE ABOVE LIMITATIONS MAY NOT APPLY TO YOU.

© 2003 Corel Corporation. All rights reserved. Corel, the Corel logo, Corel Grafigo, the “Ideas go here” tagline and WordPerfect are trademarks or registered trademarks of Corel Corporation and/or its subsidiaries in Canada, the U.S. and/or other countries. Microsoft, NetMeeting, Visual Studio, PowerPoint and Windows are registered trademarks of Microsoft Corporation in the United States and other countries. Macromedia Flash is a trademark of Macromedia, Inc. Other product, font and company names and logos may be trademarks or registered trademarks of their respective companies.

# Contents

Introducing Corel Grafigo 2 .....	3
What's in the download?.....	4
The Application.....	4
Documentation.....	4
Minimum System Requirements .....	4
Additional System Requirements .....	4
What's new in Corel Grafigo 2? .....	5
Key features of Corel Grafigo 2 .....	6
Create and capture ideas quickly and easily.....	6
Annotate and review documents and images.....	7
Collaborate and communicate with others in real time.....	8
Corel Grafigo 2 workflow scenarios.....	9
“A Day in the Life”: James Porter, Director of Marketing.....	9
Corel Corporate Profile .....	11

# Introducing Corel® Grafigo™ 2

Corel® Grafigo™ 2 is an intuitive, powerful and easy-to-use new software application that breaks down the barriers of mobile computing, and truly enables graphics on the go.

Need to capture notes and brainstorming ideas on a whiteboard during meetings? Need to quickly review and provide feedback on a presentation slide digitally, without having to print the slide set? Or simply want to get a remote mobile colleague's feedback on your document in real time?

Designed to meet the needs of mobile knowledge workers using Microsoft® Windows® XP Tablet PC Edition, Corel Grafigo 2 lets you create content, annotate, collaborate and provide feedback graphically—on any files—whenever you're away from your desktop or office.

- Use innovative sketching and annotation tools, Onionskins, the Library toolbar, Drawing Assistance and handwriting recognition technologies to mark up documents and images individually, or in a collaborative environment over the Internet
- Import popular raster image file formats such as JPEG, GIF, TIFF, BMP and Portable Network Graphics (PNG)
- Save annotated files in Scalable Vector Graphics (SVG) file format, which can then be viewed by any application with SVG support

Corel Grafigo 2 leverages the full potential of the C# programming language using Microsoft® Visual Studio® .NET to build the application, consume Web services and provide enterprise-based solutions. Plus, users will benefit from an intuitive new user interface that fluidly emulates the experience of using a traditional pen and notebook, without the need for a mouse or keyboard. Whether you're in a meeting or on the road, Corel Grafigo 2 allows you to be as productive as if you are at your desktop.

# What's in the download?

Corel Grafigo 2 is now available for download at [www.corel.com/grafigo](http://www.corel.com/grafigo).

## The Application

Corel Grafigo 2: This compelling new tablet PC business graphics software offers mobile professionals a complete productivity tool set to create, annotate, offer feedback and exchange ideas in a truly collaborative work environment that follows them wherever they go. Corel Grafigo 2 is available in localized English, French, German and Japanese.

**Help:** Through the extensive Help files, you can quickly and easily find answers to common questions, as well as practical, step-by-step guidance to help you get the most from Corel Grafigo 2.

## Minimum System Requirements

- Microsoft® Windows® XP Tablet PC Edition
- 500 MHz processor or higher
- 128 MB RAM or higher
- 30 MB hard disk space for installation\*
- Super VGA monitor (800 × 600, 768 × 1024 in portrait mode, or higher resolution)
- Pointing device, such as a pen stylus and digitizer

\*Actual requirements will vary based on the applications you choose to install. An additional 12 MB of available hard disk space may be required if you are installing Corel® SVG Viewer, which supports files created in Corel Grafigo 2. For more information on Corel SVG Viewer, please visit [www.corel.com/smartgraphics](http://www.corel.com/smartgraphics).

## Additional System Requirements for Collaboration Features

- Network adapter appropriate for the type of local-area, wide-area, wireless or home network to which you want to connect
- Access to an appropriate network infrastructure
- Access to third-party networks may require additional changes

# What's new in Corel Grafigo 2?

More intuitive, easier to learn and use, and oriented toward the specific needs of the business user, Corel Grafigo 2 offers a wide variety of workflow improvements, and new and enhanced features, including:

- **Import content from virtually anywhere** – import documents from any program installed on your tablet PC that supports standard Windows OS print functionality, and open them in Corel Grafigo 2
- **Grab-It tool** – cut out content from any application or Web site and bring it directly into Corel Grafigo 2
- **Underlays** – move, resize and delete underlays quickly and easily, including importing multi-page documents as multiple separate underlays, which are then automatically added to the View Manager toolbar for easy access
- **Library toolbar** – the new Library toolbar replaces the Symbols palette, allowing you to create reusable content from underlays, Onionskins, text frames and ink strokes, and organize content more easily with a new, intuitive workflow
- **Drawing Assistance** – take advantage of new drawing aids that convert the shapes you draw into perfect forms, including new shapes such as arrows and trapezoids, plus line straightening and alignment, symmetry recognition and snapping
- **Content selection** – use the Pick and Lasso tools to select ink strokes, text frames and underlays with a tap of the pen, and grab anywhere within a selection to move the selected content. Plus, select and move content around the workspace with a single motion using the new Pick tool
- **Ink strokes** – resize and rotate ink strokes, and use the new Local Eraser tool to erase portions of an ink stroke
- **Onionskins** – take advantage of new options for Onionskins, including show, hide, lock and unlock
- **Navigate in documents** – view document contents and navigate within documents more easily. Use the Navigator to pan to any area of the workspace with a tap of the pen, or auto-pan to move the document view in the direction you drag a selected object
- **View Manager** – save specific views while working and access them at any time on the View Manager toolbar
- **Slide shows** – save views as a slide show and view them in an SVG viewer. For multi-view documents, Corel Grafigo 2 also provides navigation controls that let you navigate through the views you've defined
- **Real-time collaboration** – collaborate in real time using Microsoft® NetMeeting® or Microsoft® Peer-to-Peer (P2P) technology
- **E-mail documents** – e-mail documents directly from Corel Grafigo 2
- **Exchange information between programs** – copy selected ink strokes from Corel Grafigo 2 and paste them into any other program that supports ink. Plus, take selected ink strokes from other programs and insert them into Corel Grafigo 2

# Key features of Corel® Grafigo™ 2

Corel Grafigo 2 seamlessly emulates the experience of working with a traditional pen and paper, allowing you to create and share your ideas, annotate electronic files, provide timely feedback and collaborate with colleagues on the go, anywhere and at any time.

## Create content and capture ideas quickly and easily

### ***ENHANCED!* Drawing Assistance**

Corel Grafigo 2 instantly converts hand-drawn forms into perfect shapes, including circles, diamonds, ellipses, parallelograms, squares, rectangles, triangles, trapezoids, arrows and many more. Plus, it offers such other advanced drawing aids as line straightening and curve smoothing; collinear alignment of line segments, end points and corners; auto-closing of geometrical and non-geometrical shapes; symmetry recognition; and snapping.

### **Handwriting recognition**

Using Microsoft's handwriting recognition engine, Corel Grafigo 2 smoothly converts your handwriting into regular text, which can be reused later with word processing applications such as WordPerfect® or Microsoft® Word.

### **Pen tool**

The pressure-sensitive Corel Grafigo 2 Pen tool lets you write, draw, sketch and doodle just as easily as with any traditional pen. To sketch a bold-lined circle, simply draw over the circle several times to indicate desired boldness, and the Pen tool automatically adjusts the line thickness. In addition, the ink behaves and flows like natural ink, and the nib of the pen can be adjusted for size and color.

### **"Gestures"**

Don't like what you've drawn? With Corel Grafigo 2, you can make "gestures" with your digital pen to perform common tasks quickly, just like using shortcut keys on a keyboard. To delete an object, for example, simply hold your pen button down and scratch it out as if you were using a pencil eraser.

### ***ENHANCED!* Library toolbar**

Want to use content created in one document in another? Replacing the Symbols palette in version 1.0, the new Library toolbar lets you create reusable content from underlays, Onionskins, text frames and ink strokes, organize and rearrange content more easily with a new intuitive workflow, and share content categories with other users.

### ***ENHANCED!* Ink strokes**

Resize and rotate ink strokes with ease, plus use the new Local Eraser tool to erase portions of an ink stroke.

## Annotate and review documents and images

### ***ENHANCED!* Onionskins**

Want to permanently end the confusion of misplaced or hastily scribbled notes? A revolutionary new way to review graphically rich projects, Onionskins are transparent overlays that let you add comments or changes to a graphic or drawing without altering the original. Simply draw your changes onto an Onionskin, which is layered over the original drawing. In addition, Onionskins are reusable and can be sent (when saved with the original drawing in SVG file format ) to another person, who can then make further alterations. Plus, Corel Grafigo 2 now lets you show, hide, lock and unlock Onionskins, and use multiple Onionskins that overlap one another so you can view them independently. And when working in a collaborative environment, each person can select a different Onionskin color to avoid confusion.

### ***ENHANCED!* Underlays**

With Corel Grafigo 2, you can now move, resize and delete underlays, including importing multi-page documents as separate underlays, which are then automatically added to the View Manager toolbar for easy access.

### ***NEW!* Grab-It**

Cut out content from any application or Web site and bring it directly into Corel Grafigo 2, with only a couple of taps of your pen.

### ***ENHANCED!* Selecting content**

Use the Pick and Lasso selector tools to select ink strokes, text frames and underlays with a tap of the pen, and grab anywhere within a selection to move the selected content in one step.

### ***NEW!* Navigating in documents**

View document contents and navigate in documents more easily. Use the Navigator to pan to any area of the workspace with a tap of the pen, or auto-pan to move the document view in the direction you drag a selected object.

### ***NEW!* View Manager**

Save specific views while working and access them at any time using View Manager toolbar.



## Collaborate and communicate with others in real time

### **ENHANCED! Real-time collaboration**

Corel Grafigo 2 brings new meaning to collaboration. Through the use of Microsoft® Peer-to-Peer technology or Microsoft® NetMeeting®, Corel Grafigo 2 lets you collaborate with colleagues over the Internet, in real time. Changes made in one person's version of Corel Grafigo 2 will be seen immediately by all members of the collaboration session, saving time during group projects, brainstorming sessions, and whenever input is required from multiple sources.

### **NEW! Document Import**

Bring in content from virtually anywhere, including importing files from any program installed on your tablet PC that supports standard Windows OS print functionality. For example, if you have Microsoft® Word installed on your computer, you can import a Microsoft Word file as an underlay that becomes part of your Corel Grafigo 2 document. You can also open documents in their native programs, print them to a Corel Grafigo SVG file using the Corel Grafigo printer driver, and open them in Corel Grafigo 2.

### **NEW! Slide shows**

Save views as a slide show and view them in an SVG viewer—especially useful for large SVG documents. Plus, when you view a multi-view document in an SVG viewer, Corel Grafigo 2 provides navigation controls that let you navigate through the views you've defined.

### **Open standards**

Continuing Corel's commitment to embrace open standards, objects created with Corel Grafigo 2 are stored in the SVG file format—an open standard that allows for easy sharing and viewing of files between different applications. This means that anyone can view Corel Grafigo 2 files with a Web browser using an SVG viewer plug-in, and Corel Grafigo 2 files can also be opened and edited in other applications that support the SVG standard.

### **NEW! E-mail documents**

E-mail documents directly from Corel Grafigo 2.

### **NEW! Export preview**

Preview documents before you export them.

### **NEW! Exchange information between programs**

Copy selected ink strokes from Corel Grafigo 2 and paste them into another program that supports ink. Or take selected ink strokes from a program that supports ink and insert them into Corel Grafigo 2.

# Corel® Grafigo™ 2 workflow scenarios

Corel Grafigo 2 brings new meaning to collaboration by breaking down the barriers of mobile computing, and freeing mobile workers to create content, exchange ideas and interact with their colleagues, wherever they may be. The following Day in the Life of a Director of Marketing at a software vending corporation presents four sample scenarios that illustrate the concrete and compelling advantages Corel Grafigo 2 can bring to any organization that requires its workers to be both mobile and productive.

## **“A Day in the Life”: James Porter, Director of Marketing**

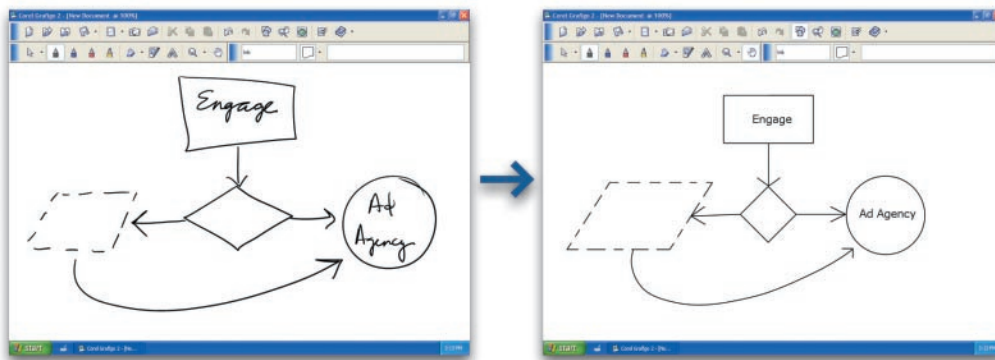
Thirty-seven year-old James Porter is Director of Marketing at Engage Corporation, an Independent Software Vendor that specializes in graphics applications. In addition to spending about a third of his time on the road, James also spends approximately 40% of his time in meetings that take him away from his desk and his team. Since the introduction of the tablet PC and the implementation of a wireless network at Engage, he finds himself spending less time running back and forth to his office trying to communicate to his team and other supporting departments, and more time being productive.

James' team is preparing to launch the next version of its cornerstone product, Engage Graphics Suite, with a new ad agency. He was asked by the Executive Management team to present the reporting structure of the new ad agency to Engage. In the meantime, James asked the Creative Department to come up with a print ad for the launch, and requested the Market Intelligence Department to run a short pricing sensitivity survey to find out the price ranges to charge for the new version. His product managers are also preparing for the Quarterly Marketing Review Meeting, where each will make a presentation on the status of their product.

### **Scenario 1: Create**

It's Monday, and James has an early morning meeting with the Executive Management team to go over the reporting structure of the new ad agency. He connects his tablet PC to the LCD projector, launches Corel Grafigo 2 and immediately begins drawing his suggested organizational chart.

With Drawing Assistance activated, James draws a square box in the middle of the canvas and labels it “Engage.” He then proceeds to quickly draw several other shapes—including a diamond, a dashed parallelogram and a circle that he labels “Ad Agency”—and interconnects them all with a series of arrows.



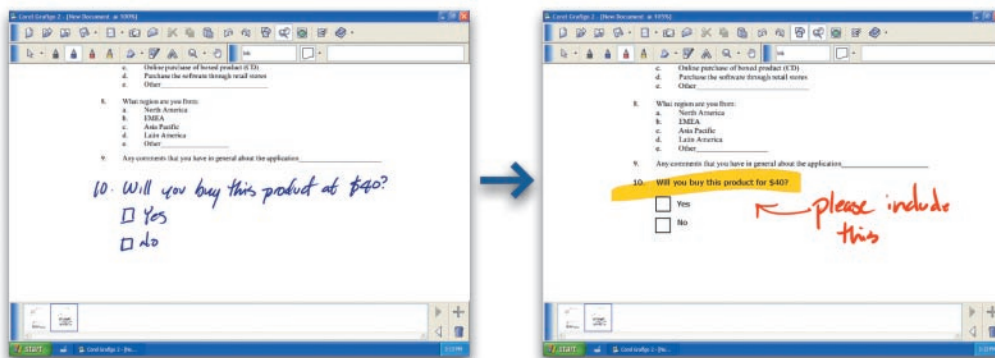
Corel Grafigo 2 automatically transforms James' hand-drawn shapes into perfectly smooth, equidistant and aligned forms. The result is a complete organizational chart created in just seconds, that communicates his ideas for the new reporting structure both clearly and effectively.

### Scenario 2: Annotate

Right after his meeting, James heads to the airport to catch a flight. But before he can leave the office, he runs into Blaine, the Market Intelligence Manager, who reminds him that his feedback on the pricing survey is due by the end of the day. With a little time left before his flight, James stops by his favorite coffee shop on the way to the airport for a quick coffee, connects to the local wireless network, opens Corel Grafigo 2 and starts reviewing the PDF pricing survey.

First, James brings in the PDF file as an underlay, then zooms in and pans to review the questions. Using the Navigator tool, he jumps to the end of the document and adds the question "Will you buy this product at \$40?"

Using the Text tool, he lassos the text to initialize the handwriting recognition engine, and adds two "Yes/No" check boxes underneath. He then adds the comment "Please include this" and uses the highlighter to bring attention to the question he added on the pricing survey.



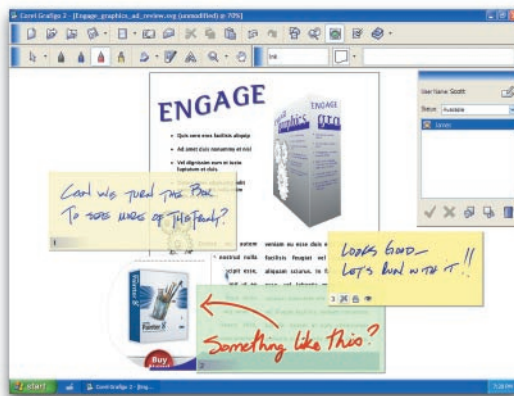
As he finishes his coffee, James saves the file and e-mails it directly back to Blaine straight from the application, with his comments intact.

### Scenario 3: Annotate and Collaborate

James arrives at the airport with 90 minutes to spare, and decides to connect to the wireless network in the lounge to check his e-mail messages. As he does so, he receives a collaboration request from Scott, his Creative Director. Scott is with the new ad agency reviewing the print ad they've designed, and he invites James to a collaboration session to get his feedback on the latest version. James accepts the invitation, and they begin to collaborate in real time using Microsoft Peer-to-Peer technology.

Scott brings in the JPG file of the Engage Graphics Suite ad as an underlay. Seeing a problem with the box design, James uses Onionskins to quickly ask, "Can we turn the box to see more of the front?"

Able to view James' comments even as he writes them, Scott opens Internet Explorer and searches the Internet for a different angle of a graphic to see if it's what James has in mind. He lassos a box shot using the Grab-It tool, automatically bringing it into the Corel Grafigo 2 document, then adds "Something like this?" in a different color Onionskin.



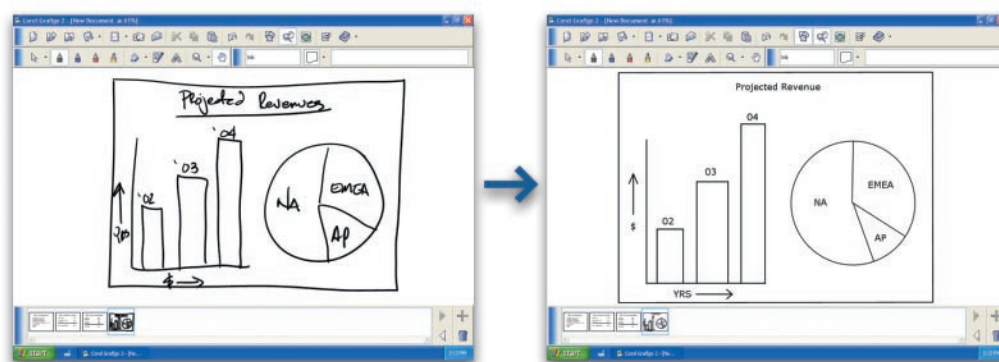
James responds with another Onionskin, adding "Looks good, let's run with it!" They both save the file on their hard drives and terminate the collaboration session.

## Scenario 4: Create and Annotate

As he's saving the collaborated file, James hears the boarding call for his flight. As soon as he's airborne, he unfolds his tablet PC to continue checking the e-mail he downloaded in the airport lounge. He notices an urgent e-mail from Todd, his Engage Graphics Suite Product Manager, asking him to review a Microsoft® PowerPoint® file for a last-minute meeting with the visiting account managers from Europe.

James imports the PowerPoint presentation into Grafigo as an underlay, and uses the View Manager to quickly scan the slides. Noticing a key gap in the information, he adds a slide of his own by creating a box using Drawing Assistance, writing "Projected Revenue" across the top and using handwriting recognition to clean it up.

He then quickly draws in a bar chart to illustrate years vs. amounts earned, and uses Drawing Assistance to sketch in a pie chart breaking down N.A., EMEA and AP revenues beside it. Finally, James adds his new slide to the View Manager, reviews the whole presentation, saves the new file and e-mails it back to Todd with the note, "Please add additional slide."



Despite having spent nearly the entire day away from his desk, James is able to keep in touch, be productive, and stay on top of even the most crucial and time-sensitive tasks—thanks to Corel Grafigo 2. His "To Do" list already completely checked off, he decides to put away his tablet PC, sit back, and enjoy the rest of his flight.

For more information, or to see a an interactive demo of Corel Grafigo 2, please visit [www.corel.com/grafigo](http://www.corel.com/grafigo).

# Corel Corporate Profile

Founded in 1985, Corel Corporation ([www.corel.com](http://www.corel.com)) is a leading technology company specializing in content development (both text and graphics), business process management and XML-enabled enterprise solutions. The company's goal is to give consumers and enterprise customers the ability to create, exchange and instantly interact with content that is always relevant, accurate and available.

### Contact Information

Web site: [www.corel.com](http://www.corel.com)

General telephone: 1-613-728-8200 ext.1801

Reader contact information: 1-800-77-COREL

Fax: 1-613-728-9790

Media inquiries: [media@corel.com](mailto:media@corel.com)

[www.corel.com/media](http://www.corel.com/media)

**For more information, or to see an interactive demo of Corel Grafigo 2, please visit**

**[www.corel.com/grafigo](http://www.corel.com/grafigo).**

**COREL™**  
[www.corel.com](http://www.corel.com)

**Corel Corporation**  
1600 Carling Ave.  
Ottawa, ON  
Canada K1Z 8R7  
Tel.: 1-613-728-8200  
Fax: 1-613-728-9790

**Corel UK Limited**  
Sapphire Court  
Bell Street  
Maidenhead  
Berkshire SL6 1BU  
United Kingdom  
Tel.: +44(0) 1628 589800  
Fax: +44(0) 1628 589801

**Corel Inc.**  
8144 Walnut Hill Ln.  
Suite 1050  
Dallas, TX  
U.S.A. 75231  
Tel.: 1-469-232-1000  
Fax: 1-469-232-1194