

UNIVERSITY *of* CALIFORNIA  IRVINE

2009  
Facts & Figures

teach  
learn  
create  
discover

[www.uci.edu](http://www.uci.edu)



# Welcome to UC Irvine



*Founded in 1965, the University of California, Irvine combines the strengths of a major research university with the bounty of an incomparable Southern California location. With a commitment to cutting-edge research, teaching, learning and creativity, UCI is a driving force for innovation and discovery that benefits our local, national and global communities in many ways.*

*With more than 27,000 students, 1,100 faculty members and 9,200 staff, UCI is among the fastest-growing campuses in the University of California system. Increasingly a first-choice campus for students, UCI ranks among the top U.S. universities in the number of undergraduate applications and continues to admit freshmen with highly competitive academic profiles. Orange County's largest employer, UCI generates an annual economic impact on the county of \$4.2 billion.*

## Excellence in Academics and Research

UCI is a center for quality education that fosters the passionate and enthusiastic expansion of knowledge. Our graduates are equipped with the tools of analysis, expression and cultural understanding necessary for leadership in today's world.

UCI is consistently ranked among the nation's best universities – public and private – with achievements in a broad range of fields that have garnered high national rankings for many schools, departments and programs. Three UCI researchers have won Nobel Prizes – two in chemistry and one in physics.

The university is noted for its excellent research and graduate programs, an extensive commitment to undergraduate education, and a growing number of professional schools and programs of academic importance and social significance. Recent additions include public health, pharmaceutical sciences and nursing science programs, as well as a new School of Law welcoming its first students this fall.

## A Prime Resource for the Community

UCI reaches beyond its classrooms and laboratories to address societal issues and support human development. UC Irvine Medical Center, Orange County's only university hospital, recently opened a new world-class facility housing the latest technologies and strengthening UCI's ability to provide specialized medical and surgical treatments to the region's citizens.

A major intellectual and cultural center, UCI engages the community through many public activities and events. Renowned individuals speaking on campus include Nobel Peace Prize winners, such as former President Jimmy Carter, His Holiness the XIV Dalai Lama, former Soviet leader Mikhail Gorbachev and Kenyan environmental advocate Wangari Maathai.

## Fueling Growth and Prosperity

In 2007-08, the university invested \$282 million in capital construction projects, with additional upgrades under way or in

the planning stages. Extramural funding – money coming from outside sources, including federal and state agencies, industry contracts and private foundations in support of UCI research – totaled \$328 million in 2007-08.

Underscoring strong community support, private giving to UCI topped \$130 million in 2007-08. With an endowment valued at \$251 million as of June 30, 2008, The University of California, Irvine Foundation spearheads private fundraising efforts for the campus and, with the assistance of alumni and community leaders, helps ensure UCI's future as a world-class research university.

UCI benefits the community and the world in countless ways through its scholarly, scientific, creative and economic contributions. UCI now has embarked on a \$1 billion fundraising campaign in support of a strategic plan that will leverage our greatest strengths to shape our future and ensure the campus continues to inspire excellence as it fulfills its research, teaching and public service mission in the decades ahead.

# Improving lives through research and discovery



## Understanding the Global Environment

UCI researchers are tackling some of the biggest environmental challenges of our time, increasing understanding of human impact on climate change, global warming, and air and water pollution.

Advanced Power & Energy Program  
[www.apep.uci.edu](http://www.apep.uci.edu)

AirUCI  
[www.chem.uci.edu/airuci](http://www.chem.uci.edu/airuci)

Department of Civil & Environmental Engineering  
[www.cee.uci.edu](http://www.cee.uci.edu)

Department of Earth System Science  
[www.ess.uci.edu](http://www.ess.uci.edu)

Environment Institute: Global Change, Energy & Sustainable Resources  
[environment.uci.edu](http://environment.uci.edu)

Institute of Transportation Studies  
[www.its.uci.edu](http://www.its.uci.edu)

Urban Water Research Center  
[www.uwrc.uci.edu](http://www.uwrc.uci.edu)

Note: Programs highlighted are a representative sampling. For more, please visit [www.uci.edu](http://www.uci.edu).

## Spearheading New Technologies

UCI benefits society and ignites economic development with innovative approaches to information technology that integrate academic research with industry expertise. Researchers are using nanotechnology and computing power to address vital issues, including healthcare, communications and national security.

California Institute for Telecommunications & Information Technology  
[www.calit2.uci.edu](http://www.calit2.uci.edu)

Center for Complex Biological Systems  
[ccbs.bio.uci.edu](http://ccbs.bio.uci.edu)

Center for Embedded Computer Systems  
[www.cecs.uci.edu](http://www.cecs.uci.edu)

Institute for Clinical & Translational Science  
[www.icts.uci.edu](http://www.icts.uci.edu)

Institute for Genomics & Bioinformatics  
[www.igb.uci.edu](http://www.igb.uci.edu)

Institute for Software Research  
[www.isr.uci.edu](http://www.isr.uci.edu)

Institute for Surface & Interface Science  
[www.isis.uci.edu](http://www.isis.uci.edu)

## Making Sense of Our World

UCI researchers are examining a broad array of current issues, from understanding the intricacies of human language to exploring the nuances of social interaction, politics and global conflict.

Center for Global Peace & Conflict Studies  
[www.cgpac.uci.edu](http://www.cgpac.uci.edu)

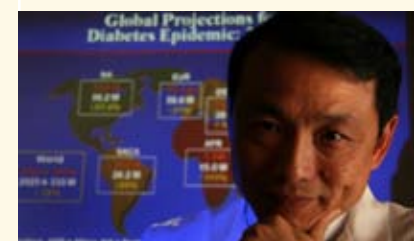
Center for Research on Immigration, Population & Public Policy  
[www.cri.uci.edu](http://www.cri.uci.edu)

Center for the Study of Democracy  
[www.democ.uci.edu](http://www.democ.uci.edu)

Center in Law, Society & Culture  
[socialecology.uci.edu/research/clsc](http://socialecology.uci.edu/research/clsc)

Institute for Mathematical Behavioral Sciences  
[www.imbs.uci.edu](http://www.imbs.uci.edu)

International Center for Writing & Translation  
[www.hnet.uci.edu/icwt](http://www.hnet.uci.edu/icwt)





# Campus data

## 2007-08 Current Expenditures by Department/Function

(dollars in thousands)

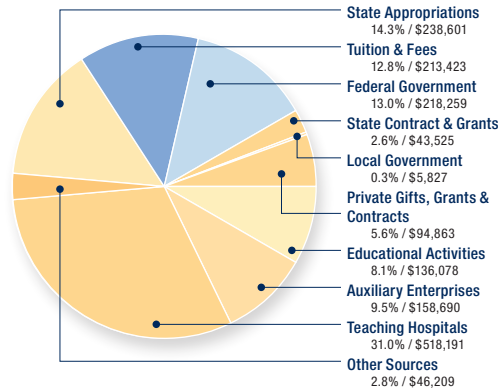
Claire Trevor School of the Arts	\$16,388
School of Biological Sciences	54,755
The Paul Merage School of Business	31,244
Department of Education	9,524
The Henry Samueli School of Engineering	45,218
School of Humanities	38,504
Donald Bren School of Information & Computer Sciences	19,159
School of Physical Sciences	63,518
School of Social Ecology	17,923
School of Social Sciences	34,415
College of Health Sciences	7,099
School of Medicine	339,422
School of Law	423
Graduate Division	7,155
Summer Session	7,636
University Extension	23,023
Libraries	24,750
Other Campuswide Programs	75,480
Teaching Hospitals	486,199
Student Services	57,435
Institutional Support	48,351
Operation & Maintenance of Plant	37,524
Student Financial Aid	64,742
Auxiliary Enterprises	121,876

<b>Subtotal Current Expenditures</b>	<b>\$1,631,763</b>
Eliminated Capital Expenditures	(54,464)
<b>Total Current Expenditures</b>	<b>\$1,577,299</b>
<b>Total Capital Expenditures</b>	<b>\$281,607</b>
<b>2007-08 Total Expenditures</b>	<b>\$1,858,906</b>

## 2007-08 Current Receipts

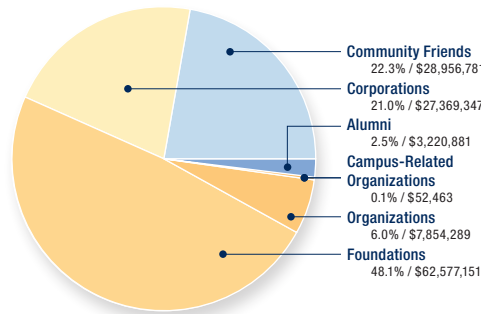
(dollars in thousands)

Total Current Receipts: \$1,673,666



## 2007-08 Private Support by Source

Total Private Support: \$130,030,912



## Student Fees (2008-09)

California residents (Undergraduates)	\$8,774.50
Non-residents (Includes non-resident tuition, fees)	\$29,382.50

## Enrollment (Fall 2008)

Undergraduates	22,122
Post Baccalaureates	116
Graduate students	
General campus	4,278
Health sciences	1,115
<b>Total</b>	<b>27,631</b>

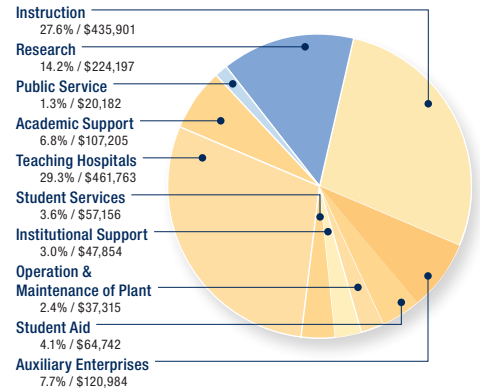
New Freshmen Applicants (Fall 2008) 42,414

New Freshmen Enrolled (Fall 2008) 4,583

## 2007-08 Current Expenditures

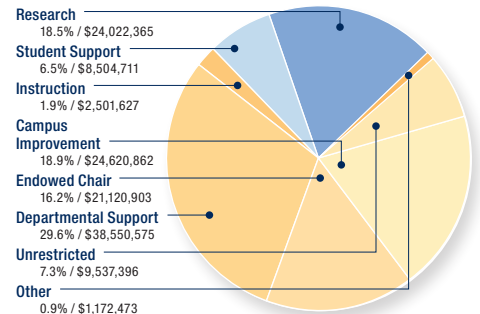
(dollars in thousands)

Total Current Expenditures: \$1,577,299



## 2007-08 Private Support by Use

Total Private Support: \$130,030,912



## Degrees Awarded (2007-08)

Bachelor's	5,505
Master's	942
Ph.D./Ed.D.	370
M.D.	92

## Work Force (Fall 2008)

Regular-rank faculty	1,123
Other teaching faculty	1,562
Non-teaching academics	2,357
Campus staff	5,277
Medical center staff	3,909
<b>Total</b>	<b>14,228</b>

## Acreage

Campus	1,475
Medical Center	46

# Fostering excellence in scholarship and teaching

## Partners in P-20 Education

UCI academic preparation programs touch the lives of tens of thousands of pre-kindergarten, K-12 and community college students annually. UCI is developing better K-12 teachers through innovative programs in physics, chemistry, engineering, social sciences, arts and humanities, to name a few.



California Alliance for Minority Participation (CAMP)  
[www.cfep.uci.edu/camp](http://www.cfep.uci.edu/camp)

California State Summer School for Mathematics & Science (COSMOS)  
[www.cosmos.uci.edu](http://www.cosmos.uci.edu)

Center for Educational Partnerships  
[www.cfep.uci.edu](http://www.cfep.uci.edu)

Creative Connections  
[www.arts.uci.edu/creativeconnections](http://www.arts.uci.edu/creativeconnections)

Department of Education  
[www.gse.uci.edu](http://www.gse.uci.edu)

Early Academic Outreach Program (EAOP)  
[www.eaop.uci.edu](http://www.eaop.uci.edu)

Faculty Outreach Collaborations  
Uniting Scientists, Students & Schools (FOCUS)  
[focus.web.uci.edu](http://focus.web.uci.edu)

Home-based Activities & Building  
Language Acquisition (HABLA)  
[www.socsci.uci.edu/habla](http://www.socsci.uci.edu/habla)

Humanities Out There (HOT)  
[www.humanities.uci.edu/hot](http://www.humanities.uci.edu/hot)

Mathematics, Engineering, Science  
Achievement (MESA)  
[www.cfep.uci.edu/mesa](http://www.cfep.uci.edu/mesa)

SAGE Scholars  
[www.sagescholars.uci.edu](http://www.sagescholars.uci.edu)

UCI History Project  
[www.humanities.uci.edu/history/ucihp](http://www.humanities.uci.edu/history/ucihp)

# Engaging and enriching the community



## Vibrant Cultural and Athletic Events

Entertaining dance, drama and music performances, as well as engaging gallery exhibitions and film festivals, highlight the vast array of public lectures, workshops and other events held at UCI each year. Six Anteater teams were named in the top-20 national athletic rankings during 2007-08.

Campus Event Calendar  
[www.today.uci.edu/calendar](http://www.today.uci.edu/calendar)

Bren Events Center  
[www.bren.uci.edu](http://www.bren.uci.edu)

Chancellor's Distinguished Fellows Series  
[www.chancellor.uci.edu/cdfs](http://www.chancellor.uci.edu/cdfs)

Claire Trevor School of the Arts  
[www.arts.uci.edu](http://www.arts.uci.edu)

Film & Video Center  
[www.hnet.uci.edu/fvc](http://www.hnet.uci.edu/fvc)

Intercollegiate Athletics  
[www.ucirvinesports.com](http://www.ucirvinesports.com)

## Leaders in Medical Research and Patient Care

UCI is noted for research on cancer, the neurosciences and the genetic underpinnings of disease. As Orange County's only university hospital and Level I trauma center, UC Irvine Medical Center offers top-quality general and acute care services, with specialty areas *U.S. News & World Report* ranks among the nation's best.

UC Irvine Healthcare  
[www.ucihealth.com](http://www.ucihealth.com)

Beckman Laser Institute & Medical Clinic  
[www.bli.uci.edu](http://www.bli.uci.edu)

Chao Family Comprehensive Cancer Center  
[www.ucihealth.com/cc2.asp](http://www.ucihealth.com/cc2.asp)

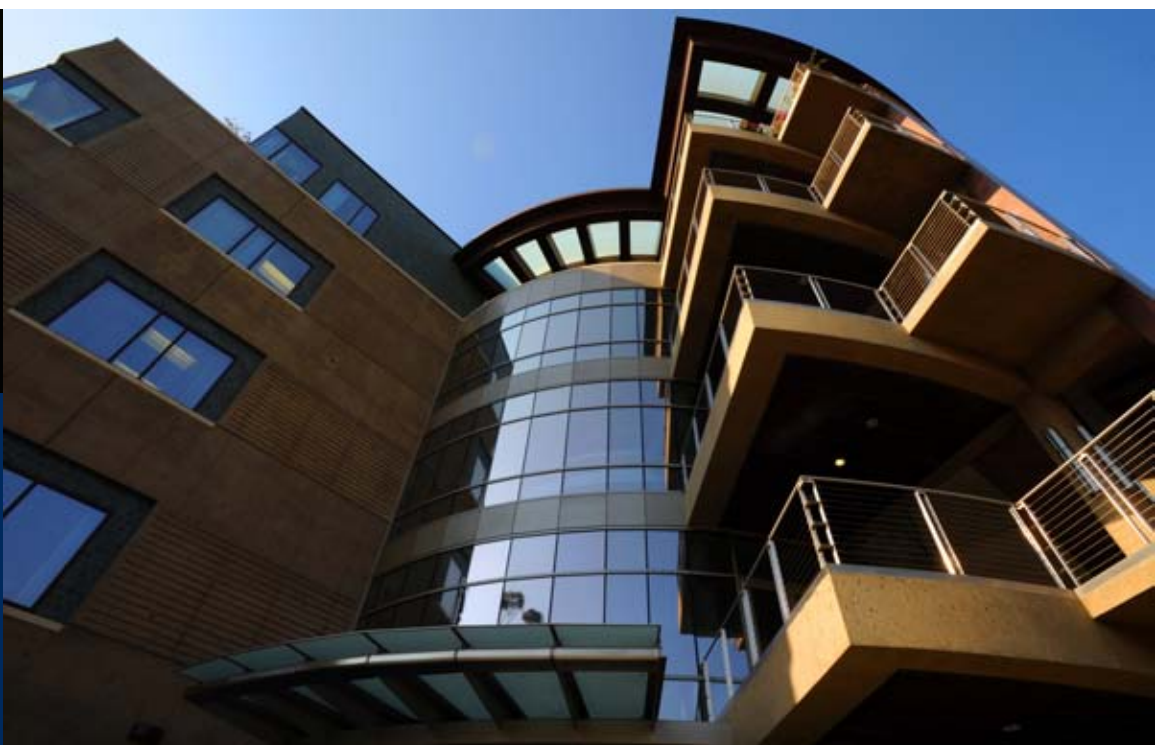
H.H. Chao Comprehensive Digestive  
Disease Center  
[www.ucihealth.com/ddc.asp](http://www.ucihealth.com/ddc.asp)

Institute for Brain Aging & Dementia  
[www.alz.uci.edu](http://www.alz.uci.edu)

Reeve-Irvine Research Center  
[www.reeve.uci.edu/](http://www.reeve.uci.edu/)

SeniorHealth Center  
[www.ucihealth.com/seniorhealth](http://www.ucihealth.com/seniorhealth)

Sue & Bill Gross Stem Cell Research Center  
[stemcell.uci.edu](http://stemcell.uci.edu)



## Academic Units

Claire Trevor School of the Arts  
[www.arts.uci.edu](http://www.arts.uci.edu)

School of Biological Sciences  
[www.bio.uci.edu](http://www.bio.uci.edu)

The Paul Merage School of Business  
[www.merage.uci.edu](http://www.merage.uci.edu)

Department of Education  
[www.gse.uci.edu](http://www.gse.uci.edu)

The Henry Samueli School of Engineering  
[www.eng.uci.edu](http://www.eng.uci.edu)

College of Health Sciences  
[www.cohs.uci.edu](http://www.cohs.uci.edu)

School of Humanities  
[www.humanities.uci.edu](http://www.humanities.uci.edu)

Donald Bren School of Information  
& Computer Sciences  
[www.ics.uci.edu](http://www.ics.uci.edu)

Interdisciplinary Studies  
[www.editor.uci.edu/catalogue/lidp/lidp.1.htm](http://www.editor.uci.edu/catalogue/lidp/lidp.1.htm)

School of Law  
[www.law.uci.edu](http://www.law.uci.edu)

School of Medicine  
[www.som.uci.edu](http://www.som.uci.edu)

School of Physical Sciences  
[www.physsci.uci.edu](http://www.physsci.uci.edu)

School of Social Ecology  
[www.soceco.uci.edu](http://www.soceco.uci.edu)

School of Social Sciences  
[www.socsci.uci.edu](http://www.socsci.uci.edu)



## By Phone

Campus operator 949-824-5011  
Medical center operator 714-456-7890

## On the Web

[www.uci.edu](http://www.uci.edu)  
[www.today.uci.edu](http://www.today.uci.edu)

UC Irvine is located in coastal Southern California, approximately 40 miles south of Los Angeles and 80 miles north of San Diego. Situated in dynamic Orange County, the main campus in Irvine and UC Irvine Medical Center in the nearby city of Orange are reachable from several major airports, the closest being Orange County/John Wayne Airport (SNA), and by major freeways. For additional maps and driving directions, visit [www.uci.edu/campusmap](http://www.uci.edu/campusmap).