

ARRIVE EARLY

Plan your trip so that you're at the venue well before the scheduled start of the event. Gates open **one to two hours** before the start of competition at city and Whistler venues. Gates open **four hours** prior to the start of the Opening Ceremony, **three hours** prior to the start of the Closing Ceremony and **two hours** prior to the start of the Victory Ceremonies.

TRAVELLING TO VENUES

In Metro Vancouver, public transit is the best way to go. If you're heading to Whistler, options include commercial motorcoach and rideshare/carpool. Parking for spectators is at the Whistler Paralympic Park spectator parking lots (see map on [page 45](#)).

DRESS APPROPRIATELY

Dress for cold and wet weather — warmly, in layers and in waterproof clothing. Remember to wear suitable footwear as you may have to walk on uneven, snowy or icy surfaces.

HAVE YOUR TICKETS READY

Be sure to have your tickets with you as you must have a valid ticket to enter a venue. Treat your tickets like cash; lost or stolen tickets will not be replaced or refunded.



PREPARE FOR THE SECURITY SCREENING

Avoid taking large bags to the venues. If you are unsure of what you can and cannot bring with you, check the prohibited and restricted items list on [page 26](#).

YOUR PAYMENT OPTIONS

Visa cards and cash are the only methods of payment accepted at Paralympic venues.

ACCESSIBILITY

All venues have been reviewed for accessibility. If you have a specific need, see the nearest staff member for assistance.

BE INFORMED

At the venue, look for wayfinding signage, listen to announcements and read the message boards — this will provide you with the information you need to make the most of your experience. Is there still something you need to know? Don't hesitate to visit our information booths located at each venue.

The background features a stylized landscape with layered blue mountains, green and brown rolling hills, and a blue river winding through the foreground. Three white birds are flying in the upper right sky area, and a single green tree is visible on a hill in the middle ground.

GETTING THERE

KNOW BEFORE YOU GO 37

GETTING AROUND METRO VANCOUVER 40

TO WHISTLER VENUES 44

GETTING AROUND WHISTLER 46

5 THINGS TO REMEMBER ABOUT TRANSPORTATION

- 1** Public transportation is accessible to all and is the quickest, most reliable way to go. Access to public transit is included in your Paralympic ticket for the day of the event.
- 2** Know before you go. Give yourself plenty of time to reach your venue.
- 3** To reach Whistler venues, spectators can drive to the Whistler Paralympic Park spectator parking lots and from there take designated shuttles to the venues.
- 4** Walk, bike and use public transportation whenever possible. Using these modes will ensure you get to your destination while contributing to a greener, more sustainable Games.
- 5** Do not park along roadways in residential neighbourhoods. Strict towing policies will be enforced.



KNOW BEFORE YOU GO



SHOW YOUR PARALYMPIC EVENT TICKET AND RIDE FOR FREE*

Your ticket entitles you to **free and unlimited travel** on all public transit on the day of your event, through to 04:00 the next morning. Use your free public transit privileges to take advantage of sightseeing, Paralympic celebrations and other attractions on the same day.



TRANSIT PASSES FOR TRAVELLING IN YOUR FREE TIME

To get around Metro Vancouver (TransLink) and Whistler (BC Transit) on days when you are not attending a Paralympic event, you can purchase a variety of passes from TransLink and BC Transit. For more information, visit translink.ca and bctransit.com.

Buy a souvenir transit pass. TransLink offers a limited-edition pass for travel before, during and after the Games.

* On TransLink and BC Transit systems.



BARRIER-FREE TRANSPORTATION

VANOC's transportation partners are committed to providing accessible transportation services throughout the Games. All transportation systems, including public transportation and services to venues, are accessible.

In Metro Vancouver, HandyDART custom transit services take you from your residence to your venue. HandyDART is a shared ride service that requires pre-registration and confirmation of disability. For more information, please call 1 604 453 4634 or visit translink.ca.

Note: All TransLink and BC Transit buses are accessible.

Tip Please respect residential neighbourhoods and be advised that parking will not be allowed in these areas.





TRANSLINK PARK & RIDE LOTS

In Metro Vancouver public parking space may be available near some TransLink stations where you can leave your vehicle and take a bus or rapid transit. Keep in mind there will be significant demand for these parking spaces. Carpooling is strongly recommended. Refer to the TransLink website (translink.ca) for information on its Park & Ride locations, then connect with carpoolers at ride-share.com.



RIDESHARE/CARPOOL

If you are driving to Park & Ride lots in Vancouver (translink.ca), please consider carpooling. Visit ride-share.com to connect with others going to the same event and travel together.

If you choose to drive to Whistler events, please consider carpooling with others going to the same event.



GETTING AROUND METRO VANCOUVER

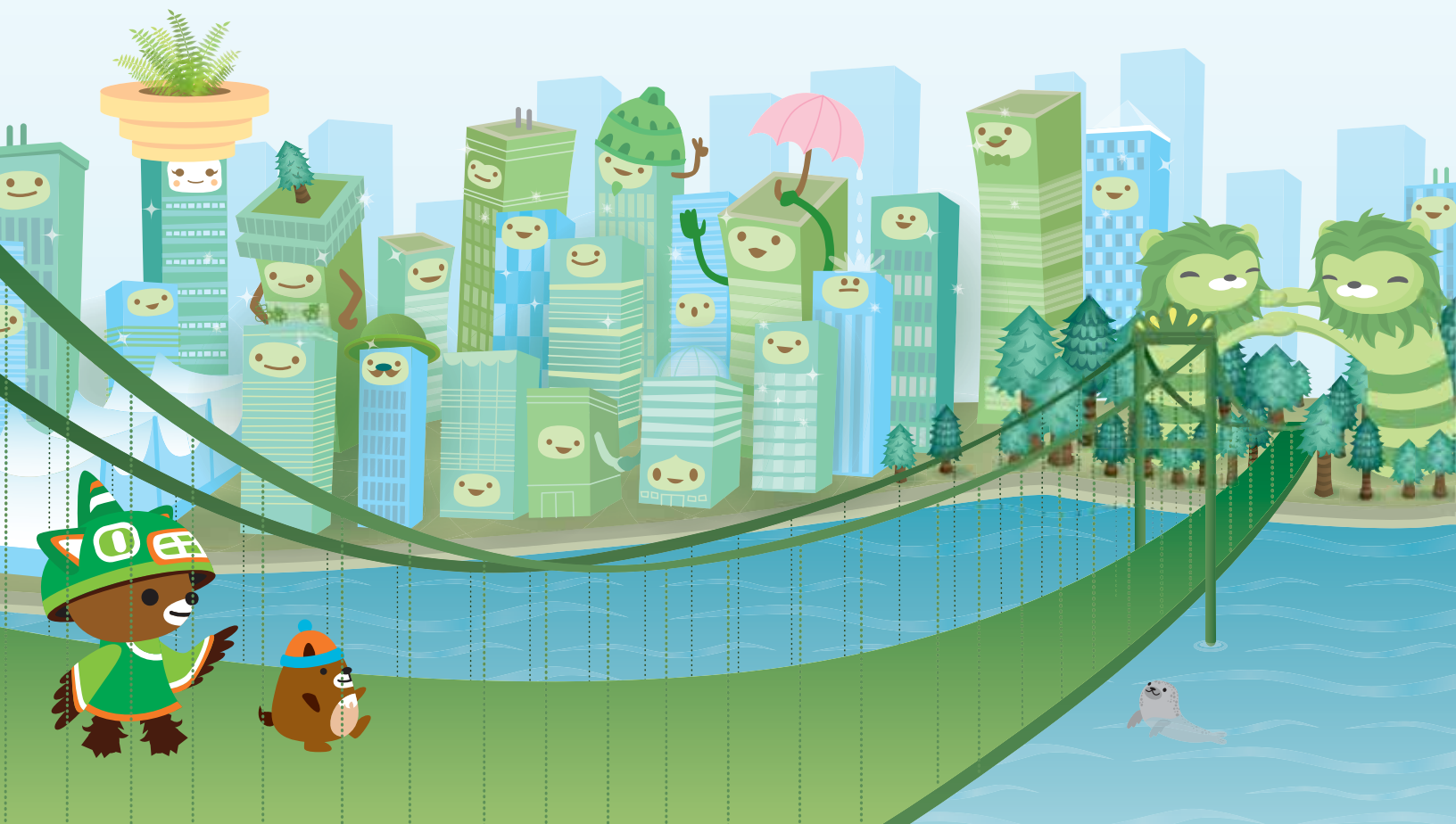
PUBLIC TRANSIT

translink.ca

Vancouver and its suburbs (collectively known as Metro Vancouver) are served by TransLink's system of buses, commuter railway and automated rapid transit lines. Access to public transit is included with your Paralympic ticket for the day of the event.

Waterfront station, located in downtown Vancouver, is a major hub for TransLink services. From here you'll be able to walk to the Paralympic Opening Ceremony at BC Place and access public transportation to get to all the venues.

On the following page is a list of public transit options.





Rapid transit

The rapid transit system includes the Expo, Millennium and Canada Lines which run every few minutes.



SeaBus

The SeaBus provides passenger ferry service from Waterfront station in downtown Vancouver to Lonsdale Quay in North Vancouver. Crossing between the two terminals takes 12 minutes. Both terminals provide connections to other transit services.



Olympic Line — Vancouver's 2010 Streetcar*

vancouver.ca

City of Vancouver streetcars operate between January 21 and March 21. They run every six to 12 minutes and connect the Canada Line (at Olympic Village station) to Granville Island. *Olympic Line streetcars are free of charge.



West Coast Express

This passenger railway links downtown Vancouver (at Waterfront station) with suburbs to the east.



Buses

An extensive network of bus services operate throughout the region.

TRANSIT STOPS AND BUS ROUTES FOR CITY VENUES

BC PLACE (OPENING CEREMONY)

SUGGESTED STOPS

Stadium–Chinatown (Expo Line/Millennium Line)

Vancouver City Centre (Canada Line)

ALTERNATIVE STOPS

Main Street–Science World (Expo Line/Millennium Line)

Yaletown Roundhouse (Canada Line)

Waterfront (Expo Line/Millennium Line)

Granville (Expo Line/Millennium Line)

UBC THUNDERBIRD ARENA

SUGGESTED STOP

UBC Bus Loop (via route 99 B-Line to UBC)

SUGGESTED BUS ROUTES

4, 9, 17, 25, 33, 41, 43, 44, 49, 480, N17

VANCOUVER PARALYMPIC CENTRE

SUGGESTED STOP

King Edward station (Canada Line)

SUGGESTED BUS ROUTES

3, 15, 25, 33



For TransLink routes, schedule information and help with your travel planning, visit translink.ca or call the Customer Information Centre at 1 604 953 3333.

ROAD RESTRICTIONS



MORE WAYS TO GET AROUND VANCOUVER



Walking

vancouver.ca

Vancouver is a wonderful city to get around on foot, and walking is a perfect option if you are downtown.



Bicycling

vancouver.ca + translink.ca

Vancouver usually enjoys mild winters, allowing locals and visitors to get around by bicycle. Take advantage of the numerous cycling routes and bike parking facilities near Games venues. See the **Venues** section for bike route connections to venues.

TO WHISTLER VENUES



To reach Whistler venues, spectators can drive to the Whistler Paralympic Park spectator parking lots at the base of Callaghan Valley Road, and from there they can take designated spectator shuttles to Whistler Paralympic Park and Whistler Creekside.

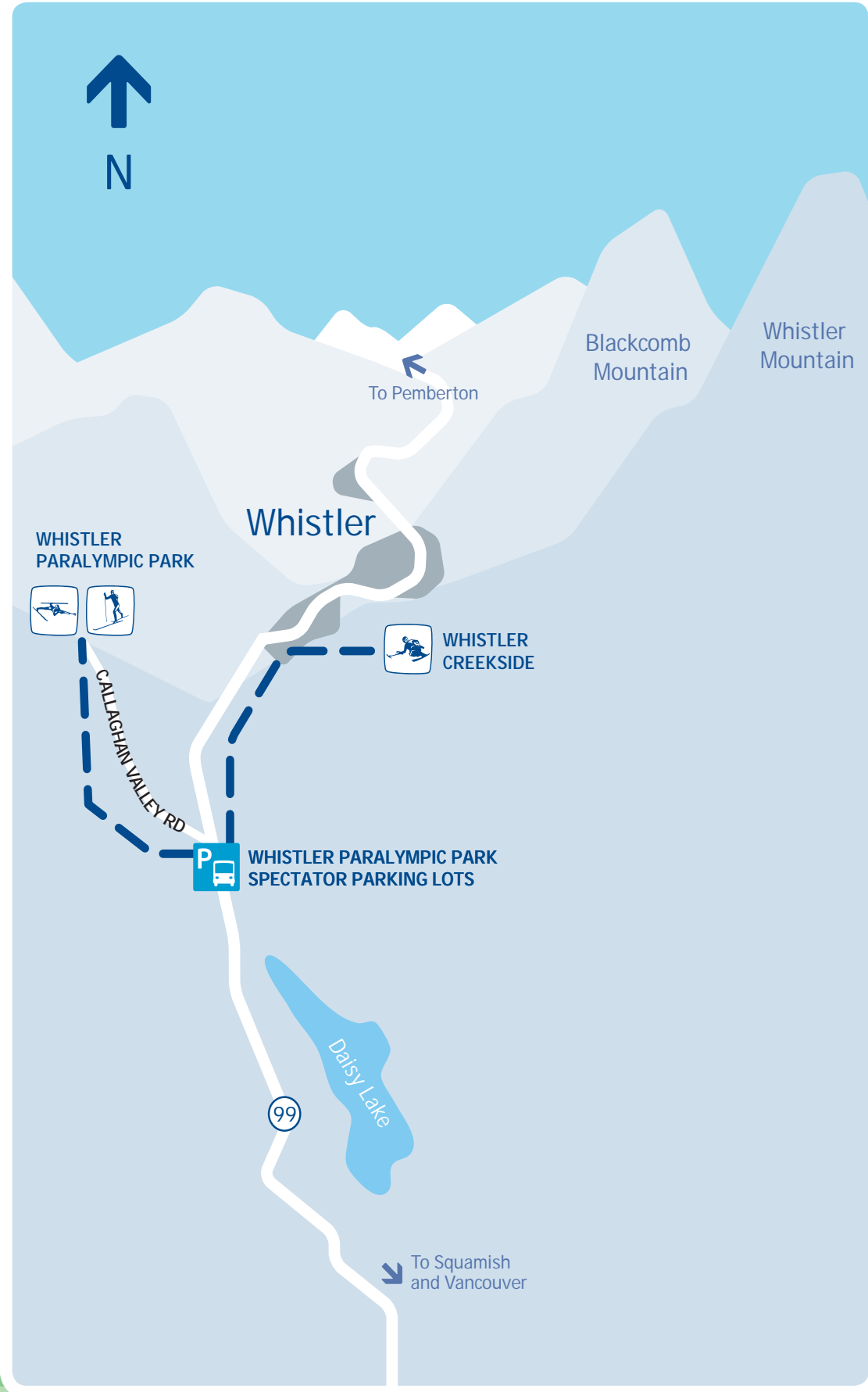
To reach the Whistler Paralympic Park lots: from Vancouver, take Highway 99 north (Sea to Sky Highway) toward Whistler. Continue past Squamish, Pinecrest Estates and Black Tusk Village until you reach the parking lots.



Do not park on the Callaghan Valley Road. Strict towing policies will be enforced.

Tip Timing is everything. Ensure you give yourself sufficient time to travel to your venue and go through ticket checking. It could take a considerable amount of time to reach your seat — if you arrive too close to the start of an event, you may miss it.





GETTING AROUND WHISTLER



BC Transit
bctransit.com

BC Transit operates the public bus system, including service within Whistler and between Whistler, Squamish and Pemberton.



Walking
whistler.ca

Walking the Valley Trail system is a big part of village life in Whistler. For more information visit whistler.ca.

WHISTLER TO VANCOUVER

Travelling by commercial motorcoach to Vancouver is the easiest way to get from Whistler to Vancouver. For more information visit whistler.com.

Once in Vancouver, take public transit to your venue — the fare is included in your event ticket. If you choose to drive, please consider ridesharing/carpooling. Drive to the nearest TransLink Park & Ride lot and access the public transit system to your venue. Remember that public transit fare is included with your event ticket. For more information visit translink.ca.

