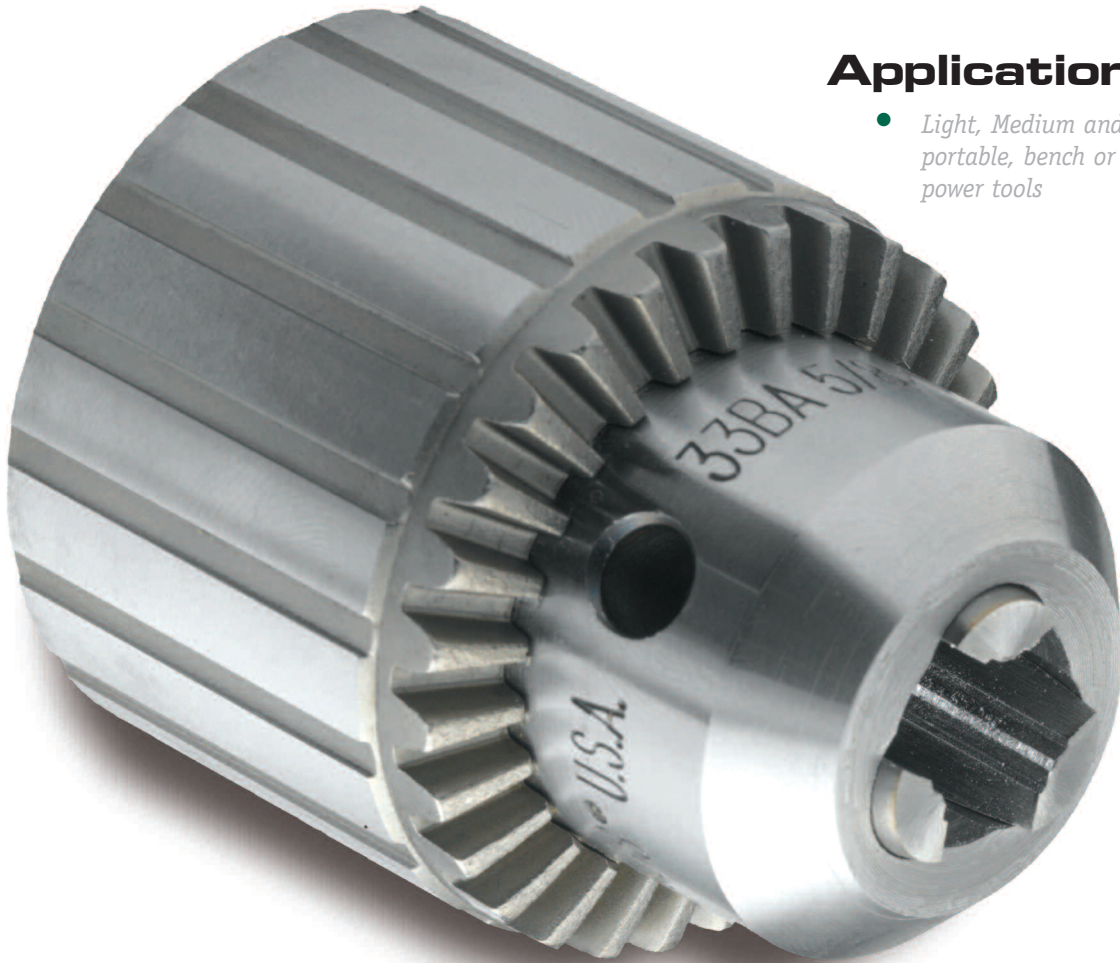


JACOBS PROFESSIONAL KEYED

DRILL CHUCKS



Application

- *Light, Medium and Heavy-Duty portable, bench or floor mounted power tools*

Features & Benefits

- *Threaded or tapered mounts on Heavy-Duty and Medium-Duty models.*
- *Center-ground jaws provide absolute straightness and alignment.*
- *One piece sleeve design eliminates cracks between driving teeth.*
- *Sleeve teeth, nose piece and keyholes are through-hardened, providing outstanding wear resistance.*

Jacobs[®]
C H U C K

JACOBS PROFESSIONAL KEYED

DRILL CHUCKS Specifications

HEAVY DUTY

| Model | Capacity | | | | Dimensions | | | | | | | | | | | | | |
|----------|----------|-------|---------|--------|------------|-----|-------|---------|---------------|--------|-------------|--------|-----------------|-------|----------------------|-------------|--------|----|
| | Minimum | | Maximum | | Mount | | Key | | Closed Length | | Open Length | | Sleeve Diameter | | Hard Pin Grip Torque | | Runout | |
| | in | mm | in | mm | | | in | mm | in | mm | in | mm | in | mm | Ft-lb Out | Nm Out | in | mm |
| 3A | 0.125 | 3.000 | 0.625 | 16.000 | 3JT | K3 | 3.810 | 96.800 | 2.870 | 72.900 | 2.300 | 58.400 | 20.83 | 28.25 | 0.004"@1.50" | 0.10mm@38mm | | |
| 3KD | 0.125 | 3.000 | 0.625 | 16.000 | 3JT | K3 | 4.060 | 103.100 | 3.120 | 79.200 | 2.290 | 58.200 | 20.83 | 28.25 | 0.004"@1.50" | 0.10mm@38mm | | |
| 3PD | 0.125 | 3.000 | 0.625 | 16.000 | 3JT | K3 | 4.060 | 103.100 | 3.120 | 79.200 | 2.290 | 58.200 | 20.83 | 28.25 | 0.004"@1.50" | 0.10mm@38mm | | |
| 34-02 | 0.040 | 1.000 | 0.500 | 13.000 | 2JT | K3 | 3.520 | 89.400 | 2.740 | 69.600 | 2.040 | 51.800 | 18.75 | 25.43 | 0.004"@1.50" | 0.10mm@38mm | | |
| 34-06 | 0.040 | 1.000 | 0.500 | 13.000 | 6JT | K3 | 3.520 | 89.400 | 2.740 | 69.600 | 2.040 | 51.800 | 18.75 | 25.43 | 0.004"@1.50" | 0.10mm@38mm | | |
| 34-33 | 0.040 | 1.000 | 0.500 | 13.000 | 33JT | K3 | 3.520 | 89.400 | 2.740 | 69.600 | 2.040 | 51.800 | 18.75 | 25.43 | 0.004"@1.50" | 0.10mm@38mm | | |
| 34-33C | 0.040 | 1.000 | 0.500 | 13.000 | 33JT | K3C | 3.710 | 94.200 | 2.930 | 74.400 | 2.000 | 50.800 | 18.75 | 25.43 | 0.004"@1.50" | 0.10mm@38mm | | |
| 36 | 0.180 | 5.000 | 0.800 | 20.300 | 3JT | K4 | 4.060 | 103.100 | 3.140 | 79.800 | 2.540 | 64.500 | 56.25 | 76.28 | 0.004"@1.50" | 0.10mm@38mm | | |
| 36KD | 0.180 | 5.000 | 0.800 | 20.300 | 3JT | K4 | 4.250 | 108.000 | 3.420 | 86.900 | 2.540 | 64.500 | 56.25 | 76.28 | 0.004"@1.50" | 0.10mm@38mm | | |
| 36PD | 0.180 | 5.000 | 0.800 | 20.300 | 3JT | K4 | 4.250 | 108.000 | 3.420 | 86.900 | 2.540 | 64.500 | 56.25 | 76.28 | 0.004"@1.50" | 0.10mm@38mm | | |
| 3B 5/8 | 0.125 | 3.000 | 0.625 | 16.000 | 5/8-16 | K3 | 3.810 | 97.000 | 2.840 | 72.000 | 2.290 | 58.000 | 20.83 | 28.25 | 0.004"@1.50" | 0.10mm@38mm | | |
| 7BA 3/8 | 0 (1) | 1.000 | 0.250 | 6.500 | 3/8-24 | K7 | 2.230 | 57.000 | 1.740 | 44.000 | 1.330 | 34.000 | 4.58 | 6.22 | 0.004"@1.50" | 0.10mm@38mm | | |
| 32BA 1/2 | 0 (1) | 1.000 | 0.375 | 10.000 | 1/2-20 | K32 | 3.050 | 77.000 | 2.310 | 59.000 | 1.790 | 45.000 | 12.00 | 16.27 | 0.004"@1.50" | 0.10mm@38mm | | |
| 35B 1/2 | 0.156 | 4.000 | 0.625 | 16.000 | 1/2-20 | K3 | 3.520 | 89.000 | 2.740 | 70.000 | 2.040 | 52.000 | 18.75 | 25.43 | 0.004"@1.50" | 0.10mm@38mm | | |
| 36B 3/4 | 0.188 | 5.000 | 0.800 | 20.300 | 3/4-16 | K4 | 4.120 | 105.000 | 3.200 | 81.000 | 2.540 | 65.000 | 56.25 | 76.28 | 0.004"@1.50" | 0.10mm@38mm | | |
| 36B 5/8 | 0.188 | 5.000 | 0.800 | 20.300 | 5/8-16 | K4 | 4.120 | 105.000 | 3.200 | 81.000 | 2.540 | 65.000 | 56.25 | 76.28 | 0.004"@1.50" | 0.10mm@38mm | | |

* 0.004"/ 0.10mm at half capacity test bar

MEDIUM DUTY

| Model | Capacity | | | | Dimensions | | | | | | | | | | | | | |
|-----------|----------|-------|---------|--------|------------|-----|-------|--------|---------------|--------|-------------|--------|-----------------|-------|----------------------|--------------|--------|----|
| | Minimum | | Maximum | | Mount | | Key | | Closed Length | | Open Length | | Sleeve Diameter | | Hard Pin Grip Torque | | Runout | |
| | in | mm | in | mm | | | in | mm | in | mm | in | mm | in | mm | Ft-lb Out | Nm Out | in | mm |
| 0 | 0.0135 | 0.000 | 0.156 | 4.000 | 0JT | K0 | 1.450 | 36.800 | 1.100 | 27.900 | 0.850 | 21.600 | 2.00 | 2.71 | 0.004"@0.75" | 0.10mm@19mm | | |
| 1A | 0.040 | 1.000 | 0.250 | 6.500 | 1JT | K1 | 1.920 | 48.800 | 1.540 | 39.100 | 1.180 | 30.000 | 3.50 | 4.75 | 0.004"@1.00" | 0.10mm@25mm | | |
| 2A | 0.040 | 1.000 | 0.375 | 10.000 | 2JT | K2 | 2.810 | 71.400 | 2.170 | 55.100 | 1.670 | 42.400 | 10.42 | 14.13 | 0.004"@1.50" | 0.10mm@38mm | | |
| 31-01 | 0.040 | 1.000 | 0.375 | 10.000 | 1JT | K30 | 2.490 | 63.200 | 2.010 | 51.100 | 1.420 | 36.100 | 8.33 | 11.30 | 0.004"@1.50" | 0.10mm@38mm | | |
| 31-02 | 0.040 | 1.000 | 0.375 | 10.000 | 2JT | K30 | 2.490 | 63.200 | 2.010 | 51.100 | 1.420 | 36.100 | 8.33 | 11.30 | 0.004"@1.50" | 0.10mm@38mm | | |
| 33 | 0.080 | 2.000 | 0.500 | 13.000 | 33JT | K32 | 3.210 | 81.500 | 2.520 | 64.000 | 1.792 | 45.500 | 17.50 | 23.73 | 0.004"@1.50" | 0.10mm@38mm | | |
| 3326A | 0.080 | 2.000 | 0.500 | 13.000 | 0.625 | K32 | 3.540 | 89.900 | 2.850 | 72.400 | 1.792 | 45.500 | 17.50 | 23.73 | 0.004"@1.50" | 0.10mm@38mm | | |
| 33KD | 0.080 | 2.000 | 0.500 | 13.000 | 33JT | K32 | 3.460 | 87.900 | 2.770 | 70.400 | 1.792 | 45.500 | 17.50 | 23.73 | 0.004"@1.50" | 0.10mm@38mm | | |
| OB 5/16 | 0.0135 | 0.000 | 0.156 | 4.000 | 5/16-24 | K0 | 1.530 | 39.000 | 1.170 | 30.000 | 0.850 | 22.000 | 2.00 | 2.71 | 0.004"@0.75" | 0.10mm@19mm | | |
| 1B 3/8 | 0.040 | 1.000 | 0.250 | 6.500 | 3/8-24 | K1 | 1.950 | 50.000 | 1.570 | 40.000 | 1.120 | 28.000 | 3.50 | 4.75 | 0.004"@1.00" | 0.10mm@25mm | | |
| 2BA 3/8 | 0.040 | 1.000 | 0.375 | 10.000 | 3/8-24 | K2 | 2.810 | 71.000 | 2.170 | 55.000 | 1.670 | 42.000 | 10.42 | 14.13 | 0.004"@1.50" | 0.10mm@38mm | | |
| 41BA 3/8 | 0.040 | 1.000 | 0.375 | 10.000 | 3/8-24 | K30 | 2.500 | 63.500 | 2.050 | 52.070 | 1.430 | 36.300 | 10.00 | 13.56 | 0.014"@3.35" | 0.356mm@85mm | | |
| 41BA 3/8S | 0.040 | 1.000 | 0.375 | 10.000 | 3/8-24 | K30 | 2.500 | 63.500 | 2.050 | 52.070 | 1.430 | 36.300 | 10.00 | 13.56 | 0.014"@3.35" | 0.356mm@85mm | | |
| 41BA 1/2 | 0.040 | 1.000 | 0.375 | 10.000 | 1/2-20 | K30 | 2.500 | 63.500 | 2.050 | 52.070 | 1.430 | 36.300 | 10.00 | 13.56 | 0.014"@3.35" | 0.356mm@85mm | | |
| 33BA 1/2 | 0.080 | 2.000 | 0.500 | 13.000 | 1/2-20 | K32 | 3.090 | 78.000 | 2.430 | 62.000 | 1.790 | 45.000 | 17.50 | 23.73 | 0.004"@1.50" | 0.10mm@38mm | | |
| 33BA 3/8 | 0.080 | 2.000 | 0.500 | 13.000 | 3/8-24 | K32 | 3.090 | 78.000 | 2.430 | 62.000 | 1.790 | 45.000 | 17.50 | 23.73 | 0.004"@1.50" | 0.10mm@38mm | | |
| 33BA 5/8 | 0.080 | 2.000 | 0.500 | 13.000 | 5/8-16 | K32 | 3.090 | 78.000 | 2.430 | 62.000 | 1.790 | 45.000 | 17.50 | 23.73 | 0.004"@1.50" | 0.10mm@38mm | | |

LIGHT DUTY

| Model | Capacity | | | | Dimensions | | | | | | | | | | | | | |
|----------|----------|-------|---------|----|------------|----|-------|--------|---------------|-------|-------------|-------|-----------------|-------|----------------------|----------------|--------|----|
| | Minimum | | Maximum | | Mount | | Key | | Closed Length | | Open Length | | Sleeve Diameter | | Hard Pin Grip Torque | | Runout | |
| | in | mm | in | mm | | | in | mm | in | mm | in | mm | in | mm | Ft-lb Out | Nm Out | in | mm |
| 22BA 3/8 | 0.063 | 1.600 | 0.375 | 10 | 3/8-24 | KK | 2.420 | 61.500 | 1.890 | 48.00 | 1.42 | 36.10 | 10.00 | 13.56 | 0.010" @ 3.35" | 0.25mm @ 85mm | | |
| 24BA 3/8 | 0.063 | 1.600 | 0.500 | 13 | 3/8-24 | KK | 3.000 | 76.200 | 2.300 | 58.40 | 1.68 | 42.67 | 15.00 | 20.34 | 0.006" @ 1.50" | 0.152mm @ 85mm | | |
| 26BA 1/2 | 0.063 | 1.600 | 0.500 | 13 | 1/2-20 | KK | 3.000 | 76.200 | 2.300 | 58.40 | 1.72 | 43.60 | 15.00 | 20.34 | 0.006" @ 1.50" | 0.152mm @ 85mm | | |

JACOBS NORTH AMERICA

World Headquarters
and U.S. Factory
One Jacobs Road
P.O. Box 592
Clemson, SC 29633, USA
Phone: 864.654.5926
Fax: 864.654.5001

JACOBS EUROPE

Distribution Center
The Jacobs Manufacturing Co.
Danaher House
Parkway One Business Centre
Parkway Drive
Sheffield
South Yorkshire, S9 4WU, England
Phone: 011 44 114 256 4200
Fax: 011 44 114 256 4201

JACOBS ASIA

Manufacturing & Sales
No 26
Baiyu Road
Suzhou Industrial Park
Suzhou, Jiangsu Province, China
215021
Phone: 011 86 512 6761 6165
Fax: 011 86 512 6761 2066

