



2001:610:240:0 193.0.0.202 62 109 128 195.048.02.03 128 42.02.02 2001:610:240 193.0.0.203 95.048.02.03  
62 109 128 195.048.02.03 2001:610:240 193.0.0.203 95.048.02.03 178.12.09.02 2001:610:240 193.0.0.203  
193.0.0.203 2001:610:240:0 193.0.0.202 62 109 128 95.048.02.03 178.12.09.02 2001:610:240 193.0.0.203  
2001:610:240:0 193.0.0.202 62 109 128 95.048.02.03 178.12.09.02 2001:610:240 193.0.0.203

Number Resource Organization



# INTERNET NUMBER RESOURCE STATUS REPORT

As of 31 March 2010

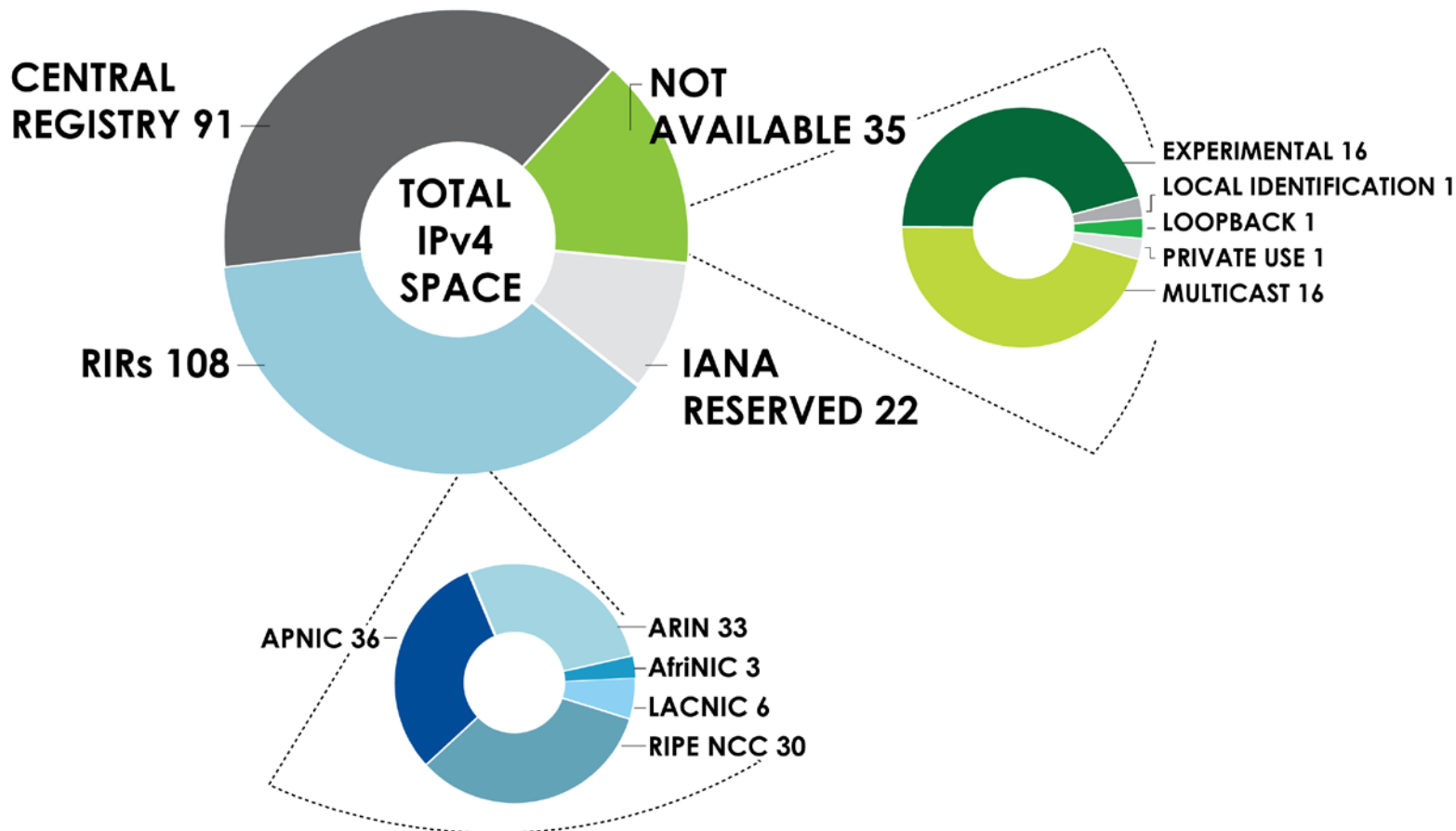
Prepared by  
Regional Internet Registries  
AfrINIC, APNIC, ARIN, LACNIC and the RIPE NCC

2001:610:240:0-193:0:0:202 62:109:128-195:048:02:03 128-12:02:02-2001:610:240 193:0:0:203 195:048:02:03  
62:109:128-195:048:02:03 2001:610:240-193:0:0:202 62:109:128-195:048:02:03 178-12:02:02-2001:610:240 193:0:0:203  
193:0:0:203 2001:610:240:0-193:0:0:202 62:109:128-195:048:02:03 178-12:02:02-2001:610:240 193:0:0:203  
2001:610:240:0-193:0:0:202 62:109:128-195:048:02:03 178-12:02:02-2001:610:240 193:0:0:203  
Number Resource Organization

# IPv4 ADDRESS SPACE

What is the status of each of the 256 /8s?

## STATUS OF 256 /8s IPv4 ADDRESS SPACE



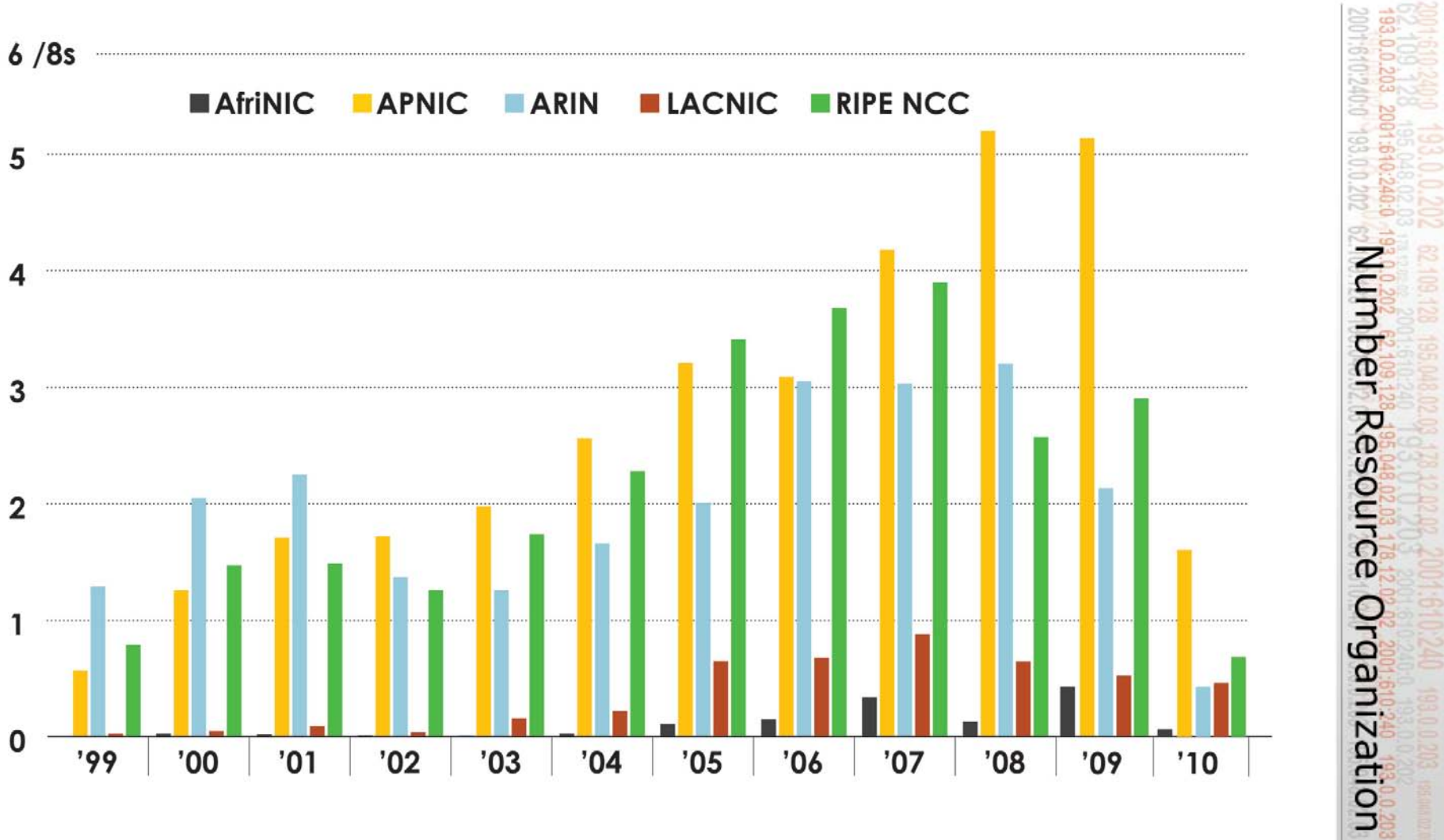
2001-6-10:240-0  
193.0.0.202  
62-108-128  
195-048-02-03  
128-12-02-02  
2001-6-10-240  
193-0-0-203  
95-048-02-03  
178-12-09-02  
2001-6-10-240  
193-0-0-203  
95-048-02-03

Number Resource Organization



# IPv4 ADDRESS SPACE ISSUED (RIRs TO CUSTOMERS)

In terms of /8s, how much space did each RIR issue by year?



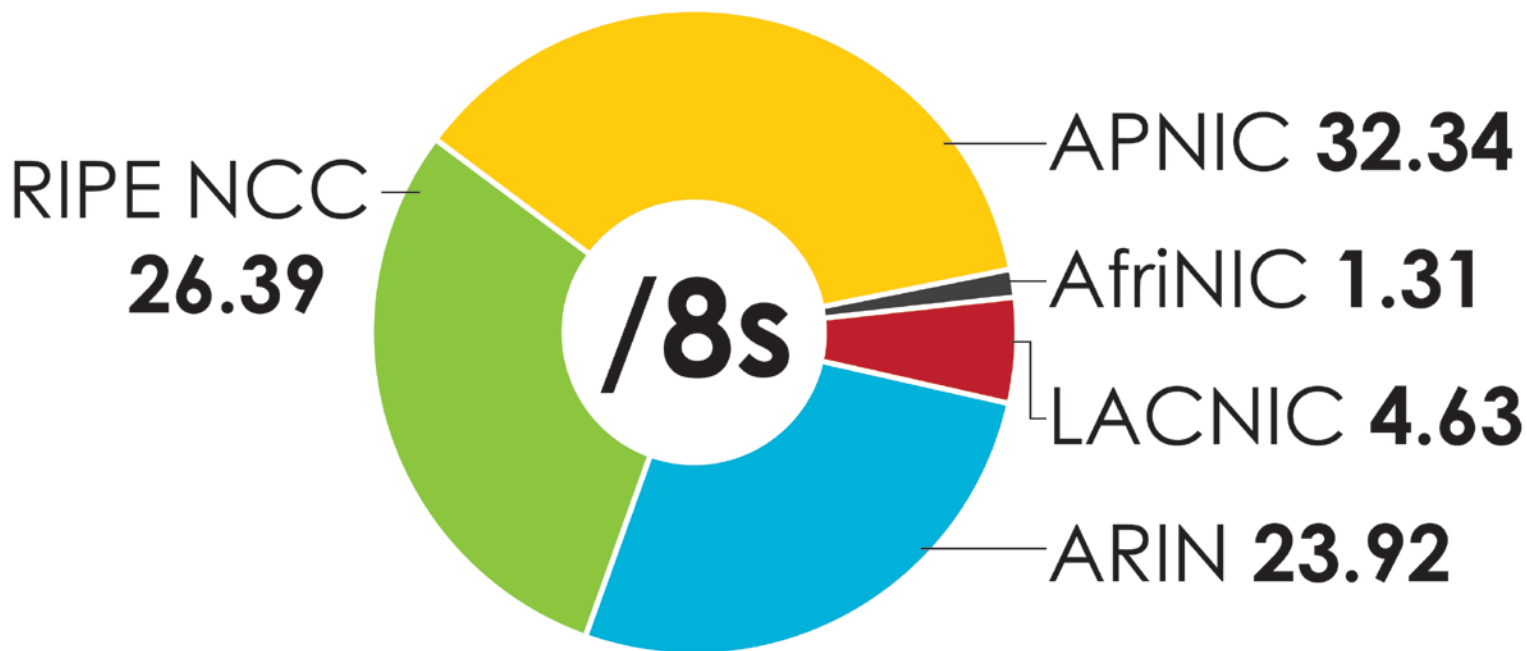


# IPv4 ADDRESS SPACE ISSUED

(RIRs TO CUSTOMERS)

In terms of /8s, how much total space has each RIR issued?

(Jan 1999 – Mar 2010)



2001:610:240:0-193.0.0.202 62 109 128 195 048 02 03 128 42 02 03 2001:610:240 193.0.0.203 95 048 02 03 178 12 09 02 2001:610:240 193.0.0.203 95 048 02 03 193 0 0 202 2001:610:240:0-193.0.0.202 62 109 128 195 048 02 03 128 42 02 03 2001:610:240 193.0.0.203 95 048 02 03 178 12 09 02 2001:610:240 193.0.0.203 95 048 02 03 193 0 0 202 2001:610:240:0-193.0.0.202 62 109 128 195 048 02 03 128 42 02 03 2001:610:240 193.0.0.203 95 048 02 03 178 12 09 02 2001:610:240 193.0.0.203 95 048 02 03 193 0 0 202

Number Resource Organization





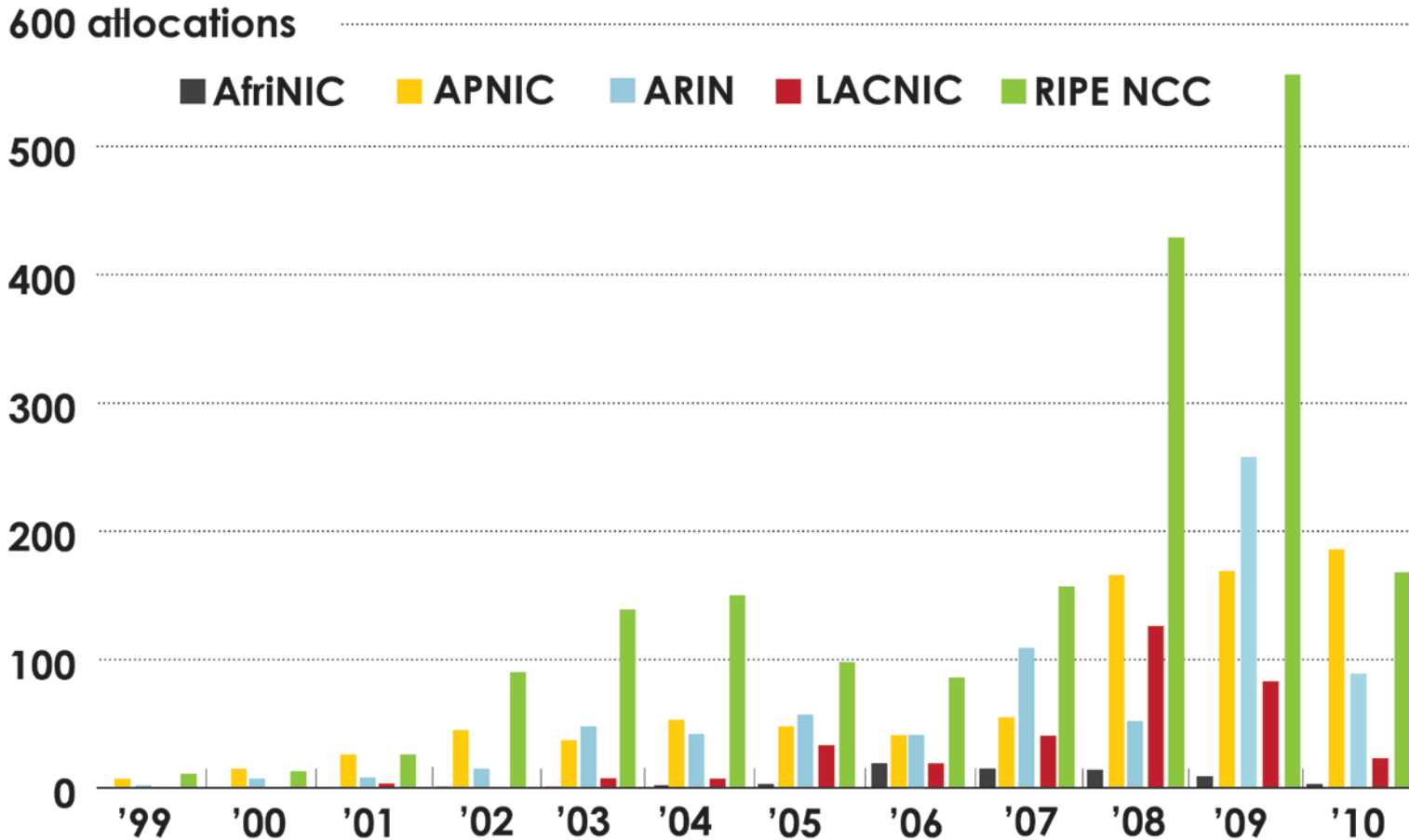






# IPv6 Allocations RIRs to LIRs/ISPs

How many allocations have been made by each RIR by year?



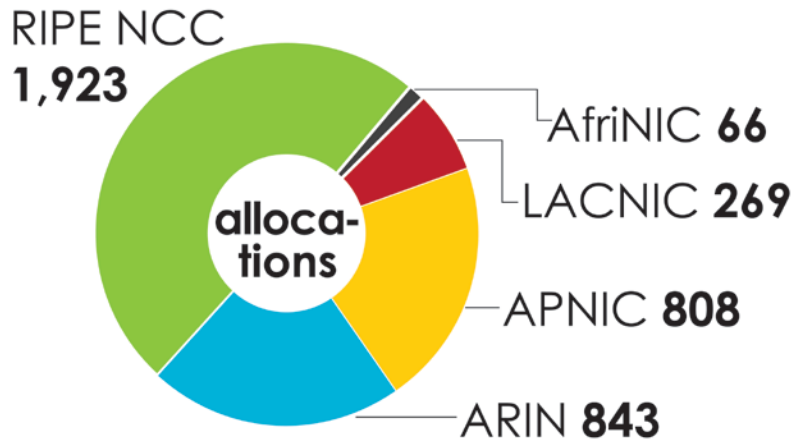
2001-6:10:240-0 193.0.0.202 62 109 128 195 048 02 03 128 42 02 02 2001-6:10:240 193.0.0.203 95 00 02 03 193 0 0 203 2001-6:10:240-0 193.0.0.202 62 109 128 195 048 02 03 178 42 09 02 2001-6:10:240 193.0.0.203 95 00 02 03 2001-6:10:240-0 193.0.0.202 62 109 128 195 048 02 03 178 42 09 02 2001-6:10:240 193.0.0.203 95 00 02 03 2001-6:10:240-0 193.0.0.202 62 109 128 195 048 02 03 178 42 09 02 2001-6:10:240 193.0.0.203 95 00 02 03 2001-6:10:240-0 193.0.0.202 62 109 128 195 048 02 03 178 42 09 02 2001-6:10:240 193.0.0.203 95 00 02 03

Number Resource Organization

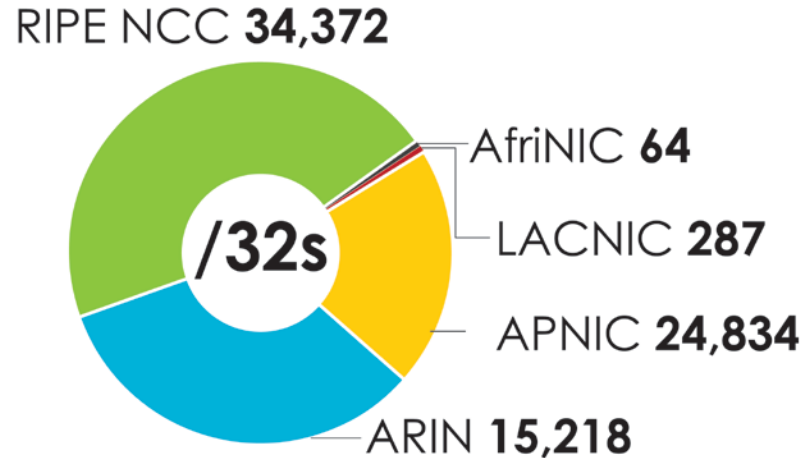
# IPv6 ALLOCATIONS RIRs to LIRs/ISPs

(Jan 1999 – Mar 2010)

How many total allocations have been made by each RIR?



In terms of /32s, how much total space has each RIR allocated?





# LINKS TO RIR STATISTICS

- RIR Stats:  
[www.nro.net/statistics](http://www.nro.net/statistics)
- Raw Data/Historical RIR Allocations:  
[www.aso.icann.org/stats](http://www.aso.icann.org/stats)  
[www.iana.org/assignments/ipv4-address-space](http://www.iana.org/assignments/ipv4-address-space)  
[www.iana.org/assignments/as-numbers](http://www.iana.org/assignments/as-numbers)  
[www.iana.org/assignments/ipv6-unicast-address-assignments](http://www.iana.org/assignments/ipv6-unicast-address-assignments)



thank you

2001:610:240:0 193.0.0.202 62 109 128 195.048.02.03 128 42.02.02 2001:610:240 193.0.0.203 95.048.02.03  
62 109 128 195.048.02.03 2001:610:240 193.0.0.202 62 109 128 195.048.02.03 178.12.09.02 2001:610:240 193.0.0.203  
193.0.0.203 2001:610:240:0 193.0.0.202 62 109 128 195.048.02.03 178.12.09.02 2001:610:240 193.0.0.203  
2001:610:240:0 193.0.0.202 62 109 128 195.048.02.03 178.12.09.02 2001:610:240 193.0.0.203

Number Resource Organization