



Dallas ISD Police Department Public Information Bulletin “Cheese” (Heroin)



What Is “Cheese”?

- Black tar heroin combined with crushed Tylenol PM tablets
- Highly addictive and very dangerous
- Tan-colored powder usually snorted through the nose with a tube, straw, or small ballpoint pen
- Packaged in a small paper bindle (shown at left) or zip lock baggie
- Can be bought for as little as \$2
- Popular among Hispanic juveniles, both male and female
- Has been identified in more than a dozen Dallas ISD secondary schools and surrounding suburbs

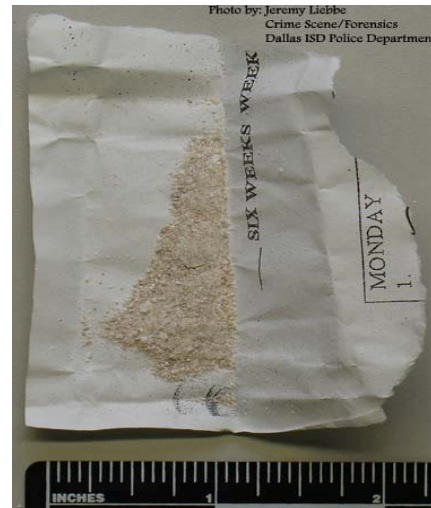
Symptoms of Use

- Drowsiness and lethargy
- Euphoria
- Excessive thirst
- Disorientation
- Sleepiness and hunger
- Sudden change in grades and friends

Symptoms of Withdrawal

(May begin within a few hours of use)

- Mood swings, insomnia
- Headache, chills, nausea, vomiting
- Muscle spasms/bone pain
- Anxiety, agitation, disorientation
- May last five to six days



Who To Call For Help

- If you encounter “cheese” in your school, contact the Dallas ISD Police Department at **(214) 932-5627**
- If you have information about drug dealers or drug locations, contact the Dallas ISD Police Narcotics Hotline at **(214) 932-5695**
- If you or someone you know needs help fighting addiction, contact the Dallas ISD Safe and Drug Free Schools Department at **(972) 925-8040** OR the Greater Dallas Council on Alcohol and Drug Abuse Treatment Hotline at **(214) 522-8600**