



Welcome

Public Information Meeting Open House

California High-Speed Train Project

We invite you to review the alternatives selected for analysis in the EIR/EIS, and changes made based on comments from the public, local and other agencies, environmental review, and continued engineering of the alignments.

Your comments will help us design the best project.





California High-Speed Train System

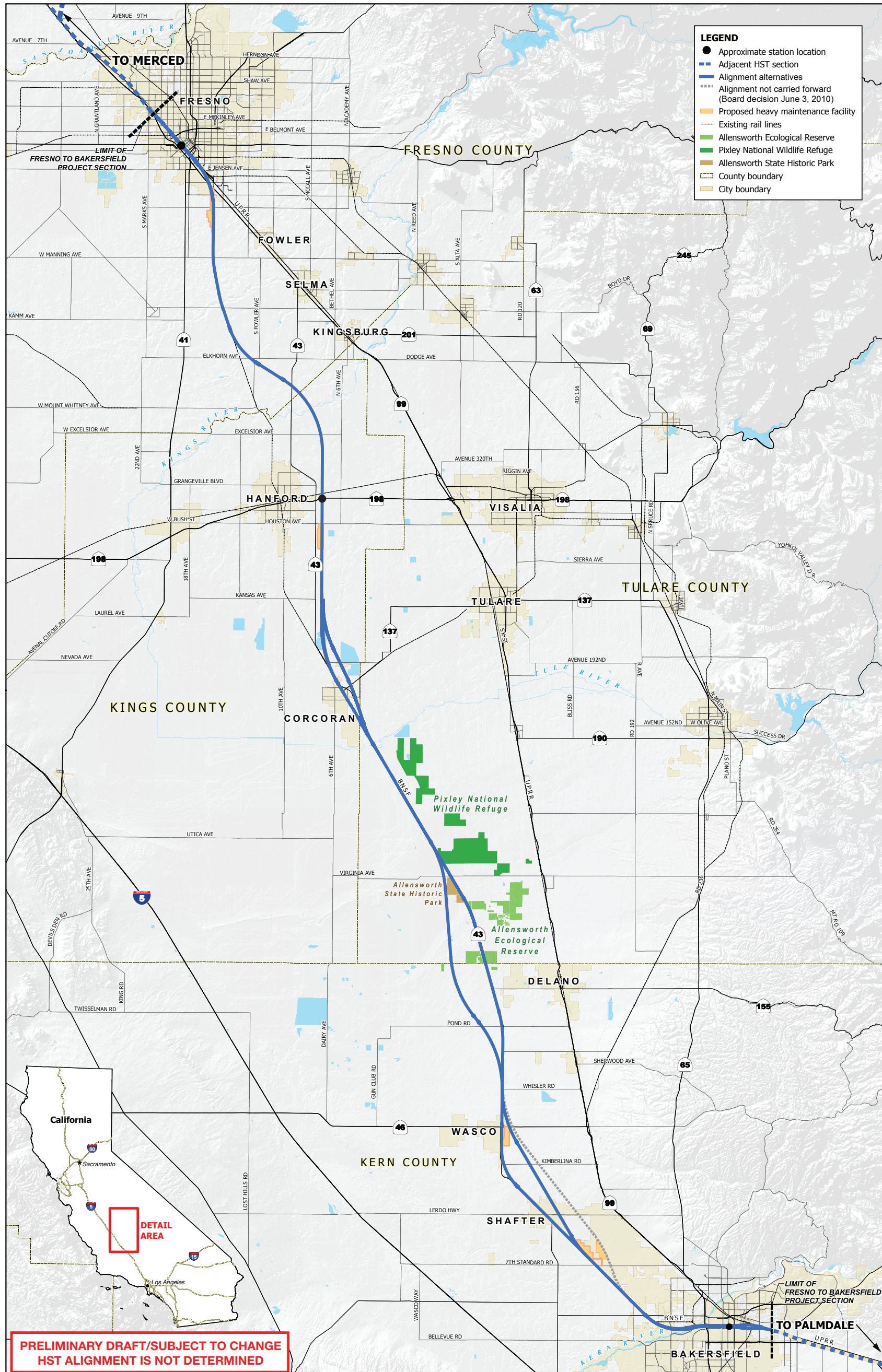


PRELIMINARY DRAFT/SUBJECT TO CHANGE
HST ALIGNMENT IS NOT DETERMINED





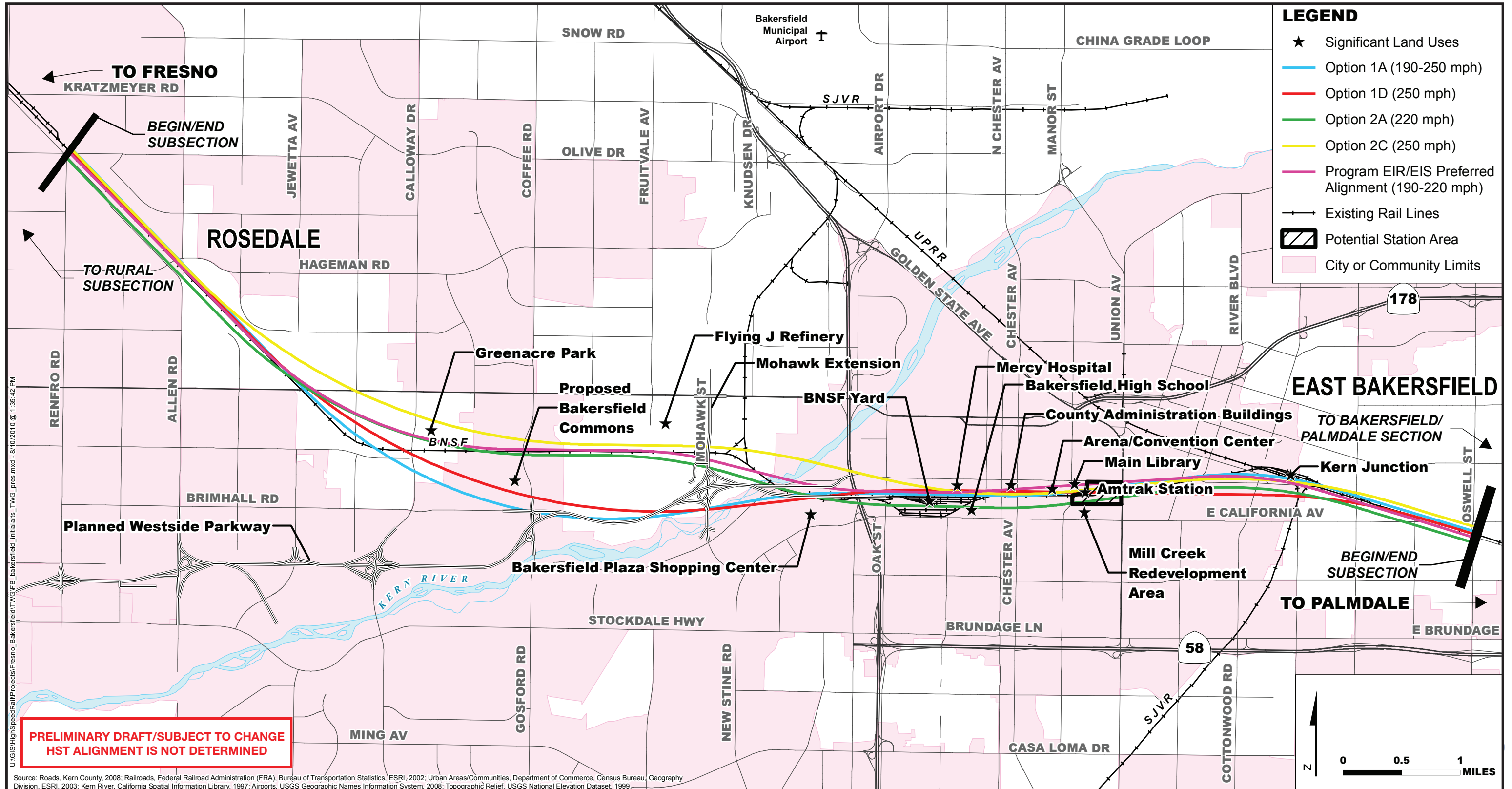
Fresno to Bakersfield HST Alignments Studied in the EIR/EIS





Development of Alternative Alignments

Initial Alternatives





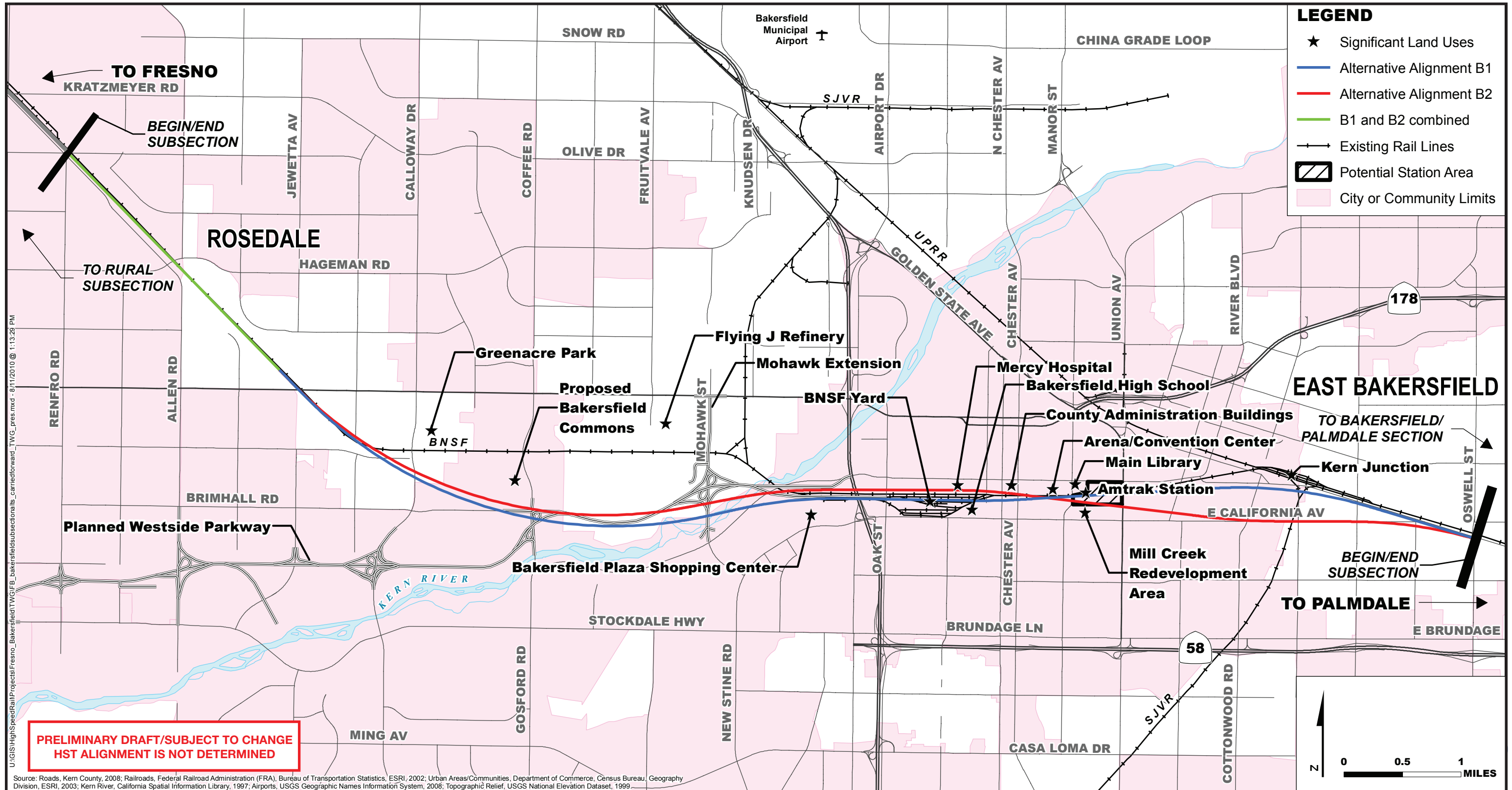
Critical Elements Considered in Developing Bakersfield Alignments

- **HST Station at Amtrak Station**
- **Follow BNSF Corridor**
- **220mph Express Trains**
- **Circumvent the Refinery**
- **Minimize Adverse Impacts**
 - **Bakersfield High School**
 - **Civic Center Buildings**
 - **Low Income Community**



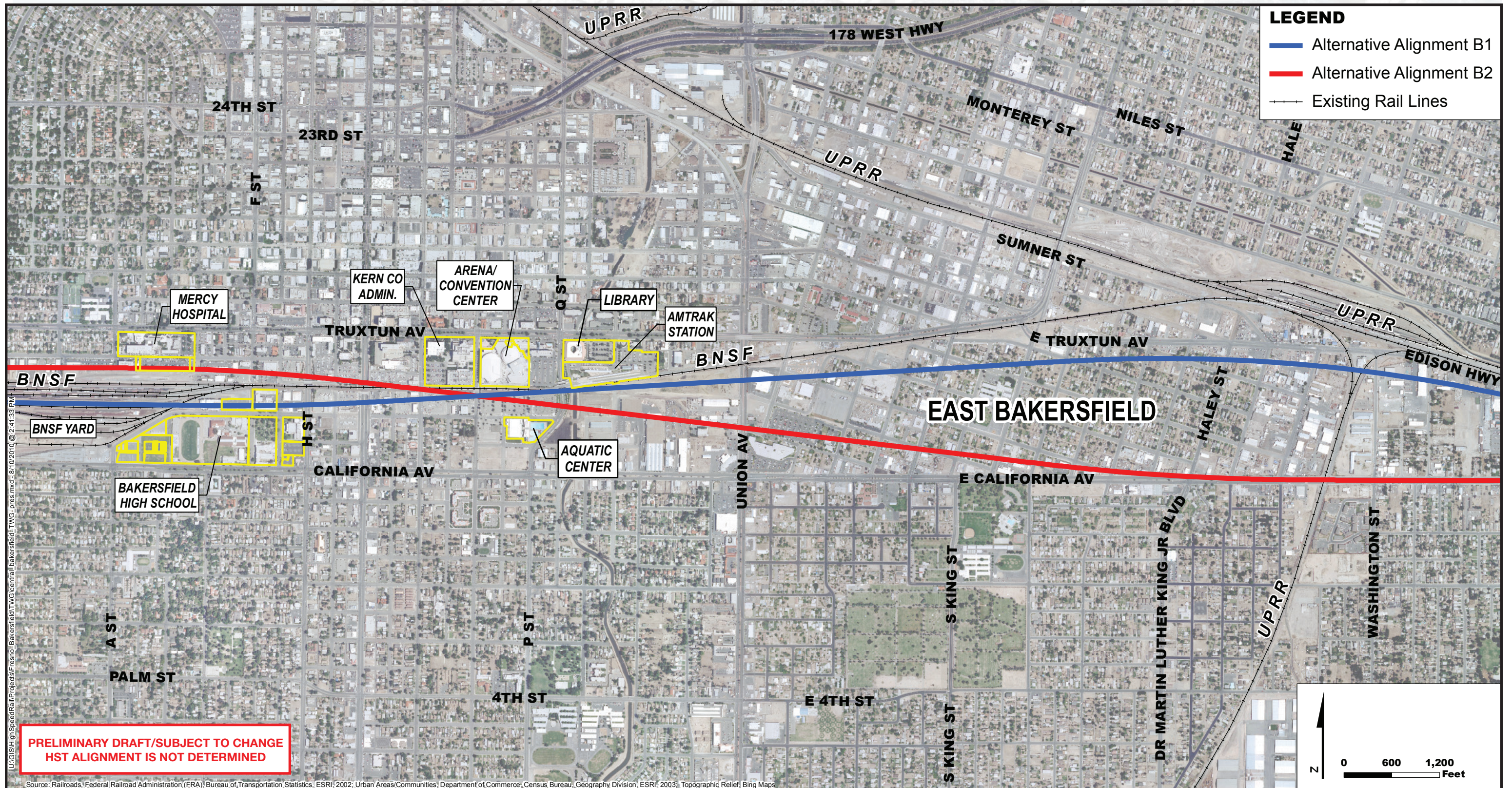


Alignments Carried Forward For Analysis in the EIR/EIS





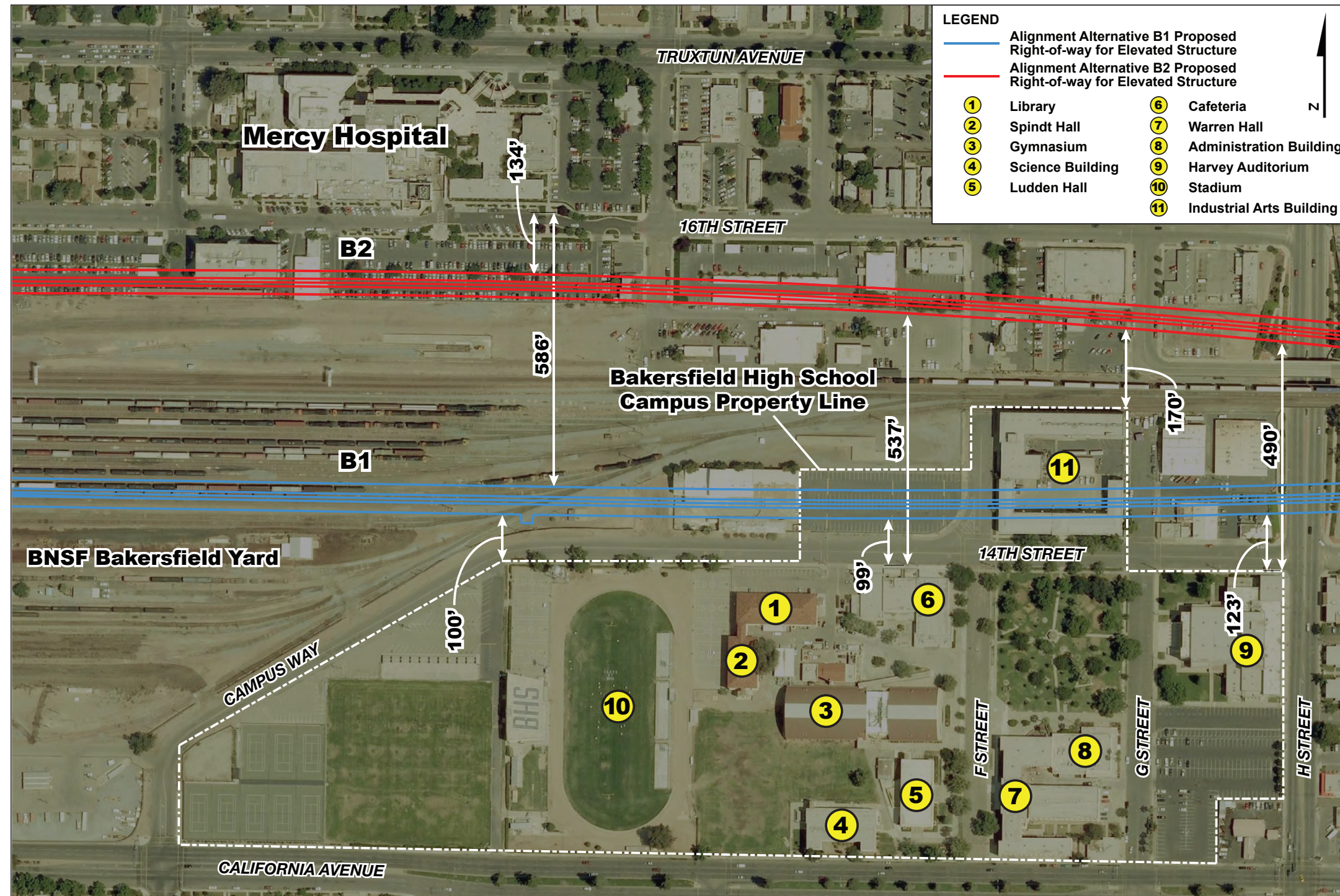
Major Facilities in Central Bakersfield



Source: Railroads, Federal Railroad Administration (FRA), Bureau of Transportation Statistics, ESRI, 2002; Urban Areas/Communities, Department of Commerce, Census Bureau, Geography Division, ESRI, 2003; Topographic Relief, Bing Maps



Alignments at Bakersfield High School

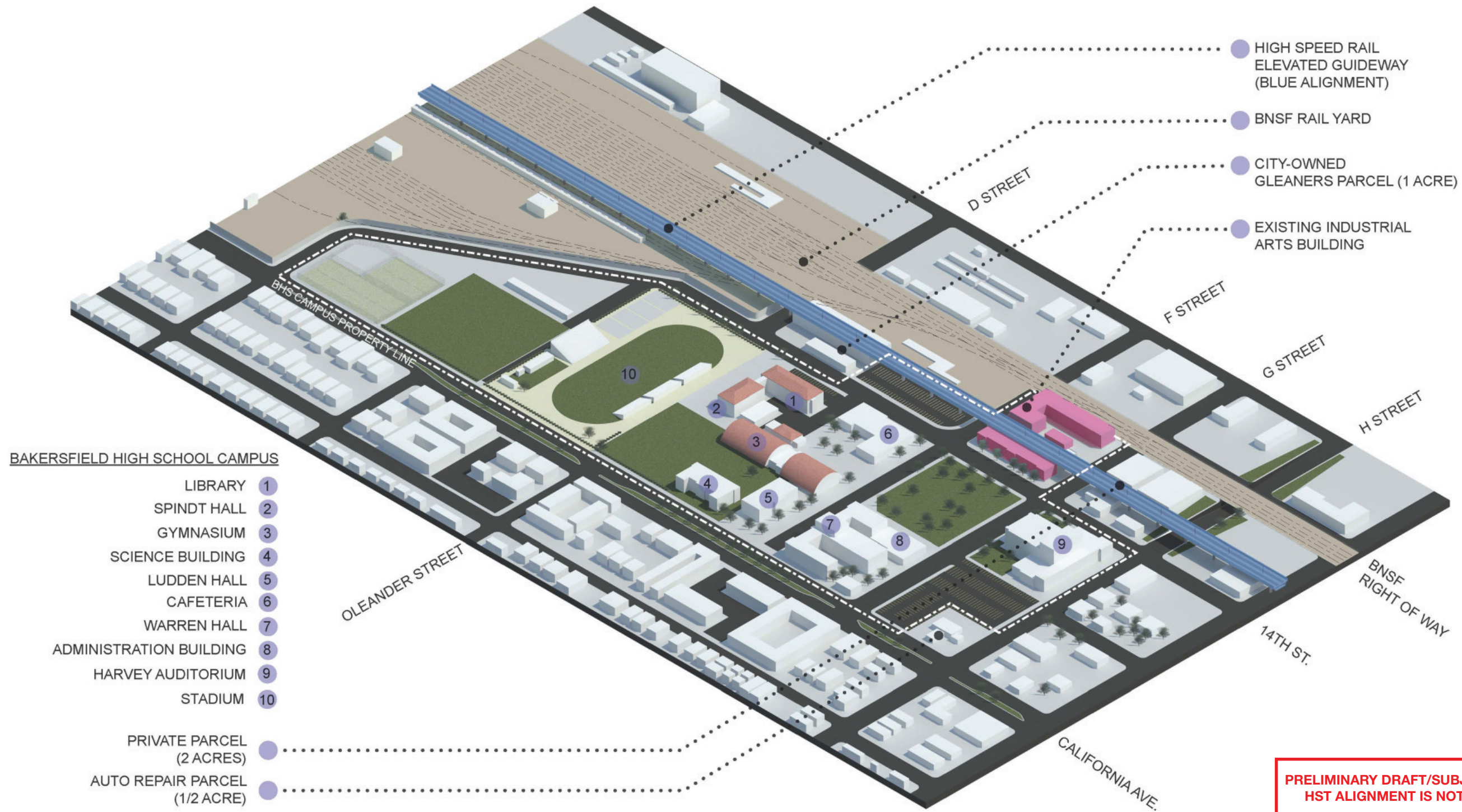


PRELIMINARY DRAFT/SUBJECT TO CHANGE
HST ALIGNMENT IS NOT DETERMINED





HST Alignment B1 at Bakersfield High School



**PRELIMINARY DRAFT/SUBJECT TO CHANGE
HST ALIGNMENT IS NOT DETERMINED**





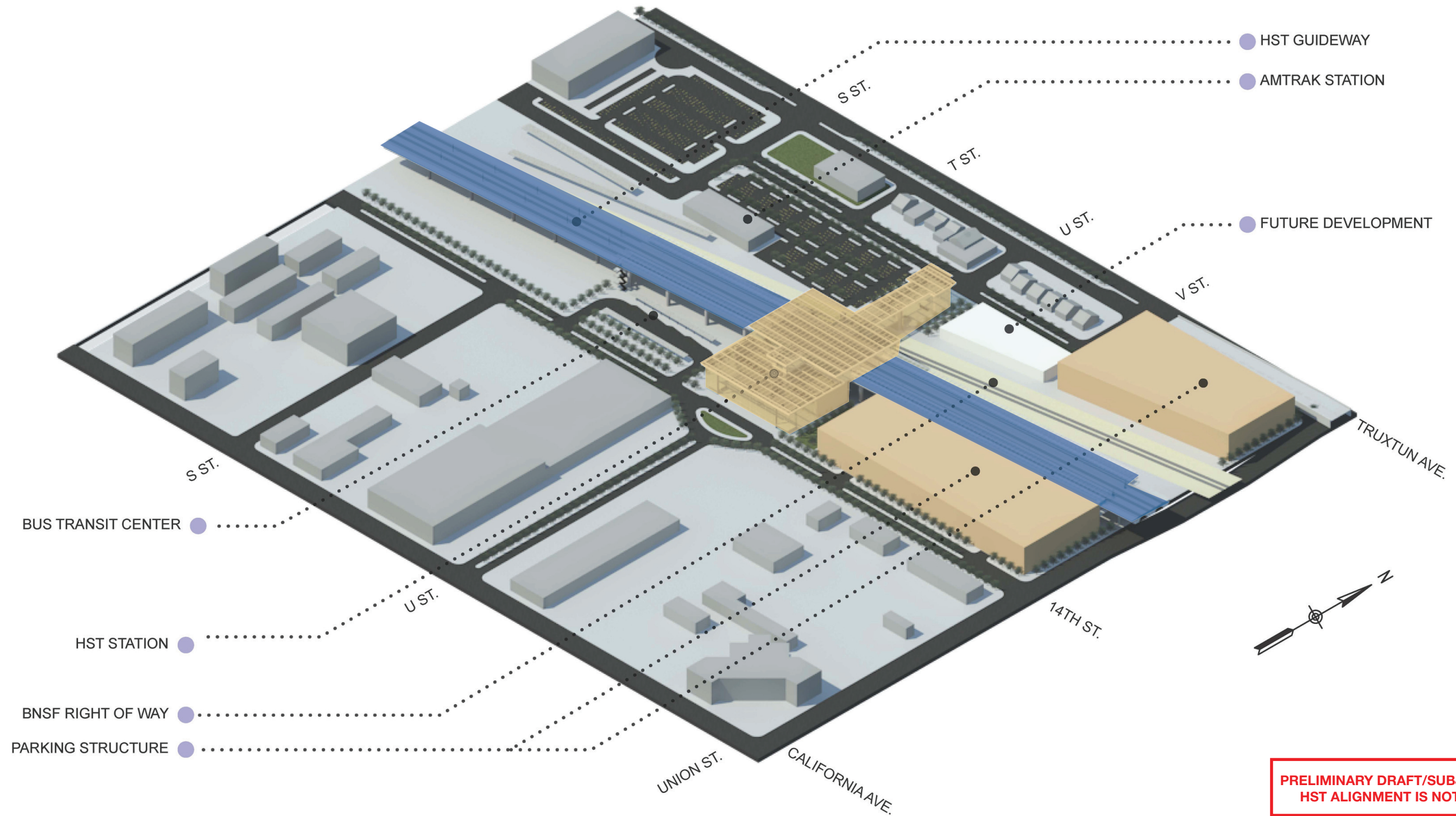
Issues Raised by Kern High School District

- **Student and staff safety**
- **Sound and vibration concerns**
- **Campus character and design**
- **Construction activities**
- **Coordination with other planned campus improvements (stadium)**
- **Parking and circulation issues**
- **California Department of Education policies**



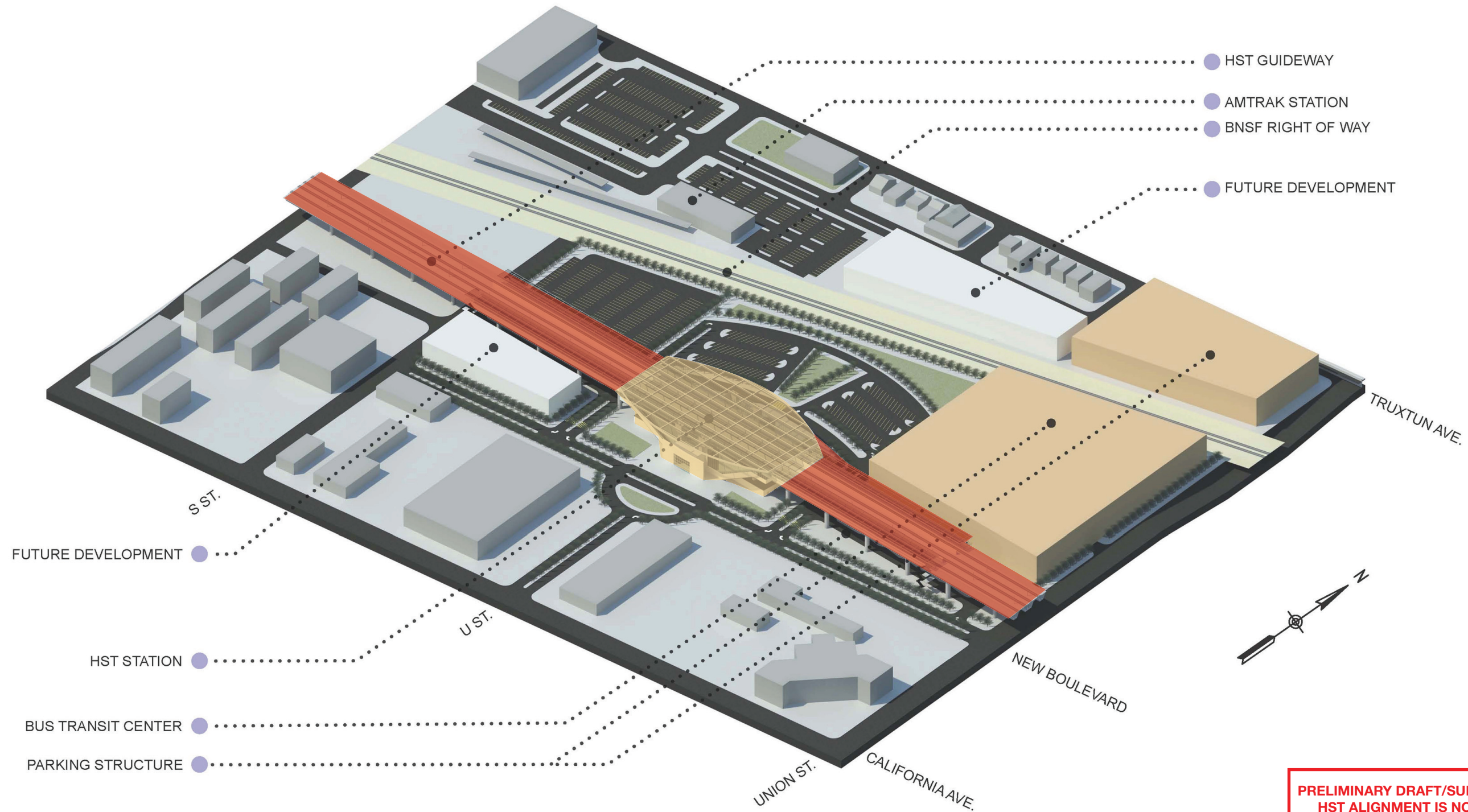


Bakersfield High-Speed Train Station – Alignment B1



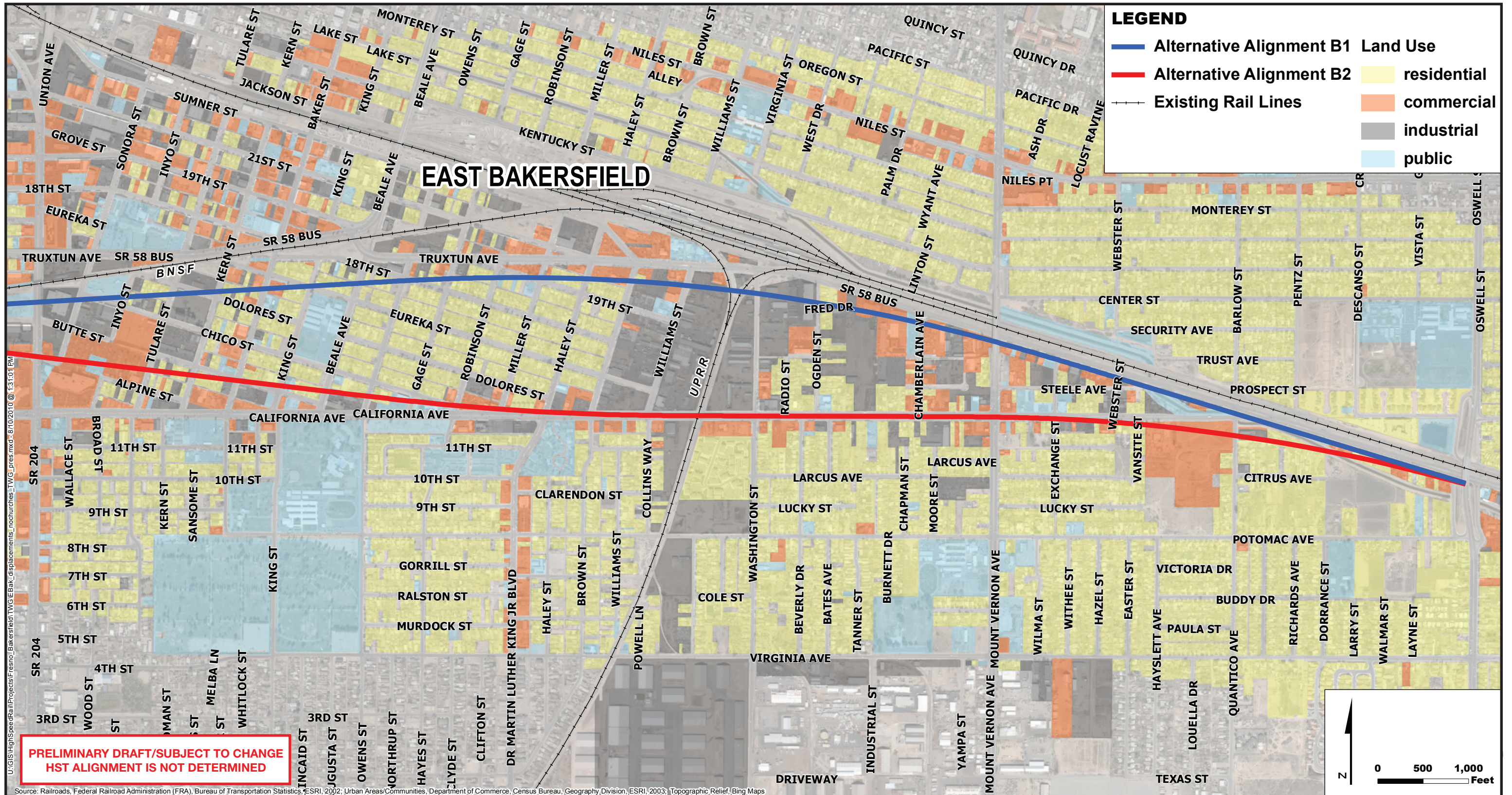


Bakersfield High-Speed Train Station – Alignment B2





East Bakersfield Potential Land Use Conflicts





Next Steps

- Continue to meet with Stakeholders and the Public
- Present Supplemental AA Report to Authority Board – September 2010
- Complete Environmental Technical Studies
- Draft EIR/EIS – January 2011
- Final EIR/EIS and Record of Decision – September 2011

