

CARON[®]
soften your world

Subscribe to Caron Connections, our free e-newsletter.

Enter your e-mail address

subscribe

[yarn](#) [free projects](#) [where to buy](#) [links](#) [learning](#) [contact us](#) [caron connections](#) [news](#) [latch hook](#)

Caron Yarns

Simply Soft[®]

Simply Soft[®] Baby **NEW**

Simply Soft[®] Brites

Simply Soft[®] Heather

NEW

Simply Soft[®] Quick

Simply Soft[®] Tweed

Simply Soft[®] Shadows

Bliss

Craft & Rug Yarn **NEW**

Felt-It

Fling

Glimmer

Natura[®]

One Pound

Perfect Match[®]

Pizazz

Wintuk[®]

Caron Latch Hook Kits

Shaggy **NEW**

Caron[®] Classics

Natura[®]

WonderArt[®]

Krafty Kids[®]

Christmas designs



Buy all your favorite
Caron products online

Tweed Off-Shoulder Dress

with
SIMPLY SOFT[®]
Tweed

designed by Treva G. McCain

TECHNIQUE USED: Crochet



SIZES: Small (Medium, Large).

FINISHED MEASUREMENTS:

Chest/Bust 34 (37, 40)"

Length to underarm 29 1/2 (30, 30
1/2)"

MATERIALS

Caron International's Simply Soft Tweed (100% acrylic; 3 oz/85 g, 150
yds/137 m skein): #0002 Off White, 8 (10, 12) skeins

One crochet hook size US I-9 (5.5mm), or size to obtain gauge
Yarn needle

GAUGE

In exsc pat, using US size I-9 (5.5mm) hook, 15 sts and 15 rows =
4"/10cm.

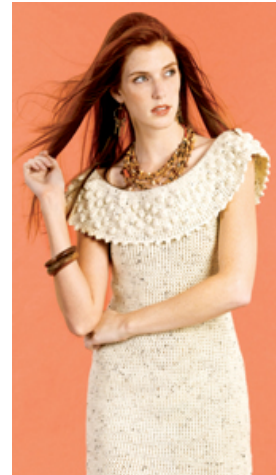
In sc pat, using US size I-9 (5.5mm) hook, 13 sts and 15 rows = 4"/10cm

ABBREVIATIONS

Trc Cluster (Cl): 4 trc worked together in same st

Five Ch picot (picot): Ch 5, sl st in beg ch

Extended single crochet (exsc): Insert hook in designated stitch or row, pull
up loop, yarn over, pull through 1 loop on hook, yarn over, pull through 2
loops on hook.



click to enlarge image
schematic

Printer Friendly PDF

STITCHES USED

Chain (ch)
 Extended SC (exsc)
 Single crochet (sc)
 Slip stitch (sl st)

NOTES

Stitch markers are used when working yoke to mark placement for increases.

BODY

Beginning at yoke, chain 26 (30, 34), place marker; ch 36 (40, 44), place marker, ch 26 (30, 34), place marker, ch 36 (40, 44), place marker, being careful not to twist, join with sl st to beg ch – 124 (140, 156) ch..

Rnd 1: Ch 2 (counts as first exsc here and at beg of each row), exsc in next and in each ch around, moving markers up as you work, join with sl st to beg ch 2.

Rnd 2: Ch 2, exsc in next and in each st around, moving markers up as you work, join with sl st to beg ch 2.

Rnd 3: Ch 2, exsc in next and in each st around, making 3 exsc in marked sts, moving markers up to middle of these 3 sts as worked, join with sl st to beg ch 2.

Rnd 4: Repeat Round 2.

Rnds 5: Repeat Round 3.

Rnds 6 - 13: Repeat Rounds 4 & 5 alternately, ending Round 2.

Rnd 14: Ch 2, exsc in next and each st around to marker, ch 5 (8, 11), skip all sts to next marker; exsc in marked st (armhole made) and in each st around to next marker, ch 5 (8, 11), skip all sts to next marker; exsc in marked st (armhole made) and in each st to beg, join with sl st to beg ch 2.

Rnds 15: Ch 2, exsc in next and each st and ch around, join with sl st to beg ch 2.

Rnds 16: Ch 2, exsc in next and each st around, join with sl st to beg ch 2.

Rnds 17 – 31: Repeat Round 16.

Rnd 32: Ch 2, exsc in next and each st around, making 12 evenly spaced decreases, join with sl st to beg ch 2.

Rnds 32 – 38: Repeat Round 16.

Rnd 39: Ch 2, exsc in next and each st around, making 12 evenly spaced increases, join with sl st to beg ch 2.

Rnds 40 – 51: Repeat Round 16.

Rnd 52: Repeat Round 39.

Repeat Rnd 16 until dress is desired length.

Edging: Ch 1, sc, ch 1 in each st around, join with sl st to beg sc. Fasten off.

Collar

Rnd 1: With WS facing, join yarn in beg ch, ch 1, sc in same and each free loop around, join with sl st to beg sc.

Rnd 2: Ch 2, exsc in next and each st around, join with sl st to beg ch 2.

Rnd 3: Ch 2, exsc in same sp, *exsc in next st; 2 exsc in next st; repeat from * around, join with sl st to beg ch 2 -- 186 (210, 234) exsc made.

Rnd 4: Ch 2, exsc in next and each st around, join with sl st to beg ch 2.

Rnd 5: Repeat Round 4.

Rnd 6: Ch 2, Cl in next st; *exsc in each of the next 5 st; Cl in next st; repeat from * around, ending exsc in last 4 sts, join with sl st to beg ch 2.

Push clusters to front of work as work progresses.

Rnd 7: Repeat Round 4.

Rnd 8: Ch 2, exsc in next 4 sp; Cl in next sp, *exsc in next 5 sp, Cl in next sp; repeat from * around, join with sl st to beg ch 2. Push clusters to front of work as work progresses.

Rnd 9: Repeat Round 4.

Rnd 10: Repeat Round 6.

Rnd 11: Repeat Round 4.

Rnd 12: Repeat Round 8.

Rnd 13: Repeat Round 4.

Rnd 14: Repeat Round 6.

Rnds 15 & 16: Repeat Round 4.

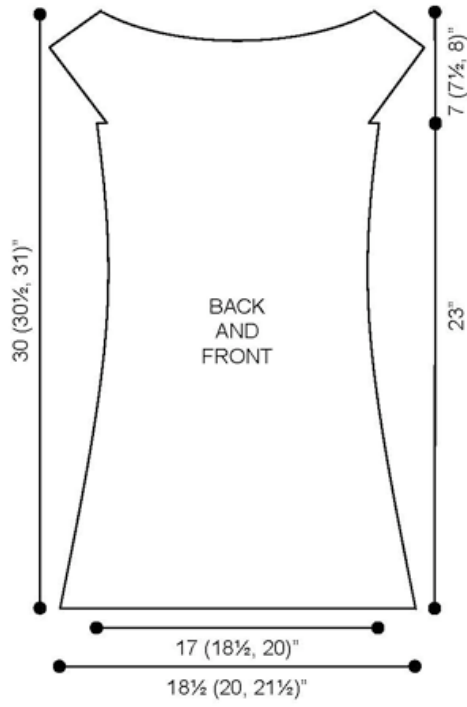
Rnd 17: Ch 1, sc in same sp, picot, *sc in each of the next 3 sp, picot; repeat from * around, ending sc in last 2 sp. Fasten off.

Armhole Edging:

Rnd 1: With RS facing, join yarn in any underarm ch, ch 1, sc, ch 1 in same and each sp around, join with sl st to beg sc. Repeat on other armhole.

FINISHING

Weave in all ends. Lightly steam to set sts.



|| Yarns || Free Projects || Where to Buy || Links || Learning || Contact Us || Caron Connections || News ||
Latch Hook ||

Visit Bond America online

©2007 Caron International