



Caron Yarns

Simply Soft®

Simply Soft® Brites

Simply Soft® Eco

Simply Soft® Heather

Simply Soft® Paints

Simply Soft® Shadows

Craft & Rug Yarn

Natura®

One Pound

Wintuk®



Check out our newest yarns!

Caron Latch Hook Kits

Caron® Classics

Natura®

WonderArt®

Krafty Kids™



Buy all your favorite Caron products online

Blanket Wrap Jacket

with
SIMPLY SOFT®
 HEATHER
 and
SIMPLY SOFT®
 and
SIMPLY SOFT®
Brites



click to enlarge image

designed by **Kathy Perry**

chart | schematic

TECHNIQUE USED: Knit

Printer Friendly PDF



SIZES: Small (Medium, Large, XLarge, XXLarge)

KNITTED MEASUREMENTS:

Bust 38 (42, 46, 50, 54)"

Length 30 (31, 32, 33, 34)"

MATERIALS

[shop online](#)

Caron International's Simply Soft Heather

(100% Acrylic): 15 (20, 20, 20, 25) oz/ 425 (566,566, 708)g

#9508 Charcoal Heather, 3 (4, 4, 4, 4) skeins (MC)

[shop online](#)

Caron International's Simply Soft

(100% Acrylic): 12 (12, 12, 12, 12) oz/ 340(509,509,509,679)g each in 2 colors.

#9738 Violet, 2 skeins (A)

#9742 Grey Heather, 2 skeins (B)

#9727 Black, 1 skein (D)

[shop online](#)

Caron International's Simply Soft Brites

(100% acrylic; 6oz/170 g, 330 yds/304 m):

#9611 Rose Violet, 2 skeins (C)

One pair size US 8 (5 mm), or size to obtain gauge

Yarn needle

Bobbins

Needle and sewing thread

GAUGE:

In Stockinette stitch, 18 sts and 24 rows = 4"/10 cm

STITCHES USED

Stockinette stitch (St st)

Fair Isle

Stripe/Fair Isle Pattern (see chart)

3" stripes (18 rows) of colors (from bottom up) MC, A, B, C with 4 rows of Fair Isle in between stripes.

BACK

Using MC, cast on 90 (96, 108, 114, 126) sts.

Hem: Work even in St st for 7 rows.

Turning ridge row: K sts through the back loops.

Cont in St st for 18 (21, 24, 24, 30) rows.

Stripe/Fair Isle Pattern: Begin at Row 21 of Fair Isle chart, working 6-st rep across row, and cont in pattern for rem of Back.

Work until piece measures 21 (21 1/2, 22, 22, 23)" from turning ridge row, end with a WS row.

Shape Armholes: Bind off 9 sts at beg next 2 rows -- 72 (78, 90, 96, 108) sts. Cont in Fair Isle pattern until armholes measure 9 (9 1/2, 10, 11, 11)", end with a WS row.

Shape Shoulders: Bind off 20 (23, 27, 30, 34) sts at beg next 2 rows.

Bind off rem 32 (33, 34, 36, 38) sts for Back neck.

LEFT FRONT (with facing)

Using MC, cast on 78 (84, 90, 96, 102) sts. Work as for Back until piece measures 21 (21 1/2, 22, 22, 23)" from turning ridge row, end with a WS row.

Shape Armhole: Bind off 9 sts at armhole edge once – 69 (75, 81, 87, 93) sts. Work until armhole measures 9 (9 1/2, 10, 11, 11)", end with a WS row.

Shape Shoulder: Bind off 20 (23, 27, 30, 34) sts at beg next row – 49 (52, 54, 57, 59) sts rem for Collar.

Shape Collar: Work 3 1/2 (3 1/2, 3 3/4, 4, 4 1/4)" in pattern. Bind off loosely.

RIGHT FRONT (with facing)

Work as for Left Front, reversing shaping.

SLEEVES

Using MC, cast on 66 (66, 66, 72, 72) sts.

Hem: Work in St st for 60 rows. (This is a large hem with no turning row.)

Stripe/Fair Isle Pattern: Work 18 (21, 21, 24, 24) rows with B, then begin Fair Isle pattern with chart Row 65, working 6-st rep across row; AT SAME TIME inc 1 st each side every 11 (9, 7, 6, 6) rows 8 (10, 13, 14, 14) times -- 82 (86, 92, 100, 100) sts. Work even in pattern until Sleeve measures 17 (17 1/2, 17 1/2, 18, 18)" from beg of B. Bind off all sts loosely.

BELT

With MC, cast on 25 sts. Work in st st until pc meas 65" or desired length. Bind off across.

FINISHING

Block pieces to measurements. Sew shoulder seams. Sew Collar to Back neck on both sides. Sew back collar seam.

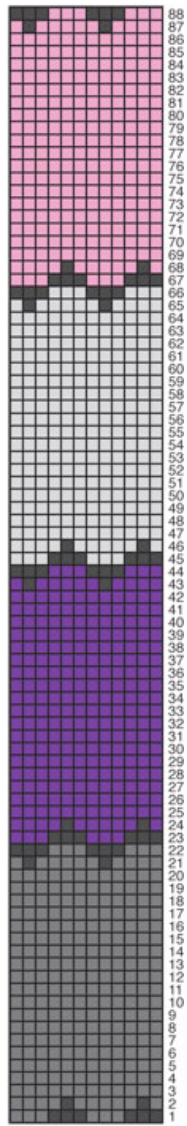
Sew Sleeves in place, easing to fit. Sew side and Sleeve seams. Turn up bottom hems along turning ridge and tack in place. Turn Sleeve hems to WS with first row of MC and last row of MC meeting and tack in place.

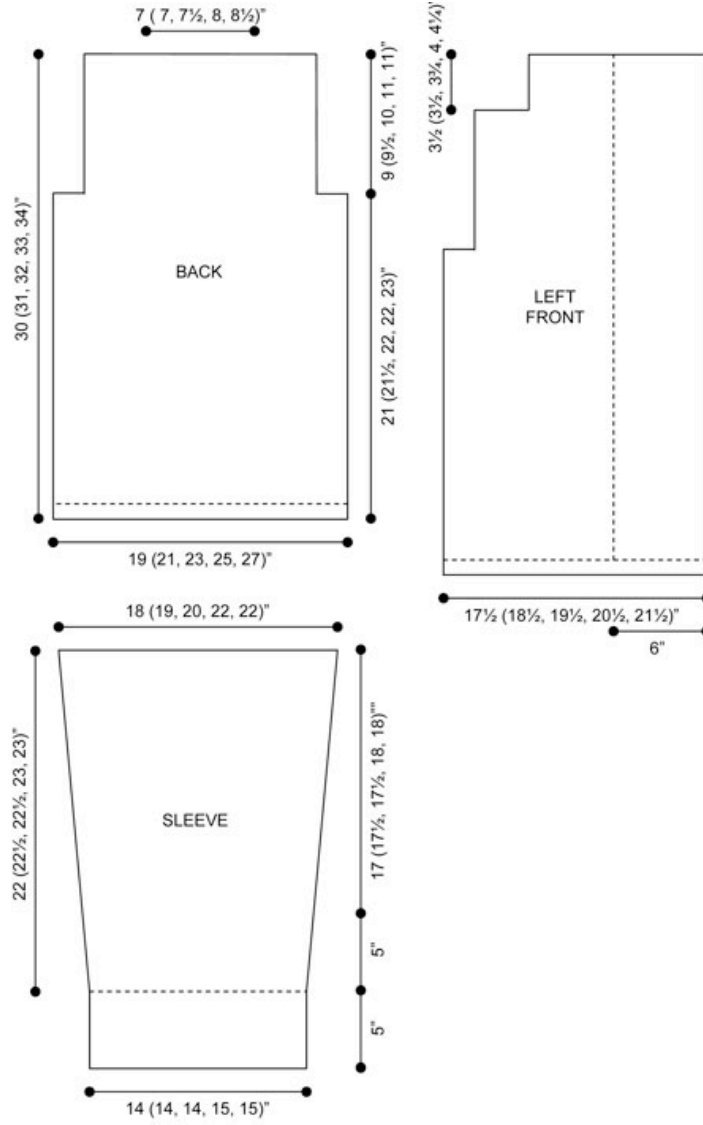
This makes a 5" finished hem to be turned again to front to desired length.

Turn facing to inside (approx 6") and tack in place with invisible sts.

Belt: fold in half lengthwise and seam all 3 sides.

Using yarn needle, weave in ends.





|| Yarns || Free Projects || Where to Buy || Links || Learning || Contact Us || Caron Connections || News || Latch Hook ||

Visit Bond America online

©2010 Caron International