

Subscribe to Caron Connections, our free e-newsletter.

Enter your e-mail address

[subscribe](#)

[yarn](#) [free projects](#) [where to buy](#) [links](#) [learning](#) [contact us](#) [caron connections](#) [news](#) [latch hook](#)

Caron Yarns

Simply Soft®

Simply Soft® Brites

Simply Soft® Eco

Simply Soft® Heather

Simply Soft® Paints

Simply Soft® Shadows

Craft & Rug Yarn

Natura®

One Pound

Wintuk®



Check out our newest yarns!

Caron Latch Hook Kits

Shaggy

Caron® Classics

Natura®

WonderArt®

Krafty Kids™



Buy all your favorite

Caron products online

Circle Yoke Sweater

with
SIMPLY SOFT®
HEATHER
and
SIMPLY SOFT

designed by Heidi Stepp

TECHNIQUE USED: Knit



SIZES

Small (Medium, Large, X-Large)

FINISHED MEASUREMENTS

Bust 34(38,42,46)"

Length 15 1/2(16, 16 1/2, 17)"

MATERIALS

[shop online](#)

Caron International's Simply Soft Heather (100% acrylic; 5oz/150 g, 250 yds/228 m):

3 (3, 4, 4) skeins MC; 1 skein (A)

Shown in: #9505 Plum Heather (MC); #9503 Woodland Heather (A)



[click to enlarge image](#)

[chart](#) | [schematic](#)

 **Printer Friendly PDF**

[shop online](#)

Caron International's Simply Soft (100% acrylic; 6oz/170g,
315yds/288m):

1 skein (B)

Shown in: #9707 Dk. Sage

One pair size US 8 (5 mm), needles or size to obtain gauge

Stitch markers

Crochet hook size US F-5(3.75 mm)

Yarn needle

Large-eye embroidery needle

Beading needle and matching thread

85 small round beads, light green shown

Row counter

GAUGE

In Diamond Stitch, 20 sts and 26 rows = 4"/10 cm, using MC

SPECIAL TECHNIQUES

Smocking Stitch: [* Insert yarn needle, threaded with yarn from WS to RS beside knit st of 1 x 3 rib; cross over purl sts and insert needle from RS to WS beside next knit st. Repeat from *, going into the same spaces as first time, pulling yarn tightly]. Fasten yarn but do not cut. On WS, weave yarn across to next knit st; repeat from [to] for each Smocking st.

Skip 3 rows; off setting smocking sts, work a total of 5 rows of sts.

STITCHES USED

Reverse Stockinette st (Rev St st): Purl on RS, knit on WS.

Diamond Stitch (multiple of 8 sts + 5) – Also see Chart

Row 1 (RS): P2, * k1, p7; repeat from * across to last 3 sts, k1, p2.

Row 2 and all WS rows: Knit the knit sts and purl the purl sts as they face you.

Rows 3 and 15: P1, k1, * p1, k1, p5, k1; repeat from * across to last 3 sts, p1, k1, p1.

Rows 5 and 13: K1, p1, * p2, k1, p3, k1, p1; repeat from * across to last 3 sts, p3.

Rows 7 and 11: P2, * p3, k1, p1, k1, p2; repeat from * across to last 3 sts, p3.

Row 9: P2, * p4, k1, p3; repeat from * across to last 3 sts, p3.

Row 16: Repeat Row 2.

Repeat Rows 1 – 16 for Diamond st.

1x 3 Rib (multiple of 4 sts + edge sts)

Row 1: * K1, p3; repeat from * across.

Row 2: Knit the knit sts and purl the purl sts as they face you.

Repeat Row 2 for 1 x 3 rib.

Chain (ch)

Reverse single crochet (Rev sc)

Single crochet (sc)

Embellishment – See [Diagram](#)

NOTE

1. Garment is designed to be loose fitting across the bust line.
2. Back is worked from lower edge to a lower than normal neck edge; the remainder of the armhole is created by the ribbed yoke.
3. Fronts are worked from the side edge to neck edge in rib, and drape from the ribbed yoke; insert is sewn under the Front edges.

BACK

Using MC, cast on 85 (95, 105, 115) sts.

(RS) Begin Diamond st, centering pattern on piece as follows: P2 (3, 0, 1), work 8-st repeat across to last 3 (4, 1, 2) st(s), k1, p2 (3, 0, 1). Work even for 7 rows, end with a WS row.

Shape Sides

(RS) Beginning this row, inc 1 st each side every 6 rows 7 times—99 (109, 119, 129) sts.

Work even until piece measures 8" from beginning, or desired length to underarm, end with a WS row.

Shape Armholes

(RS) Bind off 5 (6, 7, 8) sts at beginning of next 2 rows—89 (97, 105, 113) sts remain.

(RS) Dec 1 st each side every row 3 (5, 8, 11) times, every other row 2 (3, 3, 3) times, every 4 rows 2 times—75 (77, 79, 81) sts remain.

Work even until armhole measures 2 1/2 (3, 3 1/2, 4)" from beginning of shaping, end with a WS row; place a marker (pm) each side of center 17 (19, 21, 23) sts for neck.

Shape Neck

(RS) Work across to marker; join a second ball of yarn and bind off center sts; work to end.

Working both sides at same time, at each neck edge, bind off 6 sts once, 3 sts once, 4 sts twice, 2 sts twice, 3 sts once, 2 sts once, then dec 1 st every other row 3 times—armhole measures approx 6 (6 1/2, 7, 7 1/2)" from beginning of shaping.

LEFT FRONT

Beginning at lower side edge of left Front, cast on 8 sts.

(RS) Begin 1 x 3 Rib as follows: P1, k1 p3, k1 p2.

Shape Side

(WS) Work in pattern across; cast on 8 sts, turn.

(RS) Working cast on sts in pattern, work across all sts.

Repeat last 2 rows 3 times— 40 sts.

Shape Armhole

Work even for 8 (10, 10, 12) rows, end with a RS row.

(WS) Work across, cast on 2 sts every other row 3 (4, 5, 6) times, 3 sts every other row 2 times, 9 sts once, working cast on sts in pattern, end with a RS row—61 (63, 65, 67) sts.

(WS) Work across, cast on 17 (18, 19, 20) sts—78 (81, 84, 87) sts.

Work even for 24 rows, end with a WS row.

Shape Neck

(RS) Bind off 22 sts, work to end.

Work even for 2 rows.

Bind off all sts in pattern.

RIGHT FRONT

Work as for left Front, reversing all shaping.

CENTER FRONT INSERT

Using MC, cast on 85 (95, 105, 115) sts.

(RS) Begin Diamond st, centering pattern on piece as follows: P2 (3, 0, 1), work 8-st repeat across to last 3 (4, 1, 2) st(s), k1, p2 (3, 0, 1). Work even for 7 (3, 3, 3) row(s), end with a WS row.

Shape Sides

(RS) Beginning this row,

Size Small: Dec 1 st each side every row 41 times—3 sts remain; bind off remaining sts.

Size Medium: Dec 1 st each side every row 46 times—3 sts remain; bind off remaining sts.

Size Large: [Alternately dec 1 st every row 7 times, then 2 sts every row once] 5 times (= 40 rows; 90 sts dec), then dec 1 st each side every row 6 times—3 sts remain; bind off remaining sts.

Size X-Large: [Alternately dec 1 st every row 3 times, then 2 sts every row once] 10 times (= 40 rows; 100 sts dec), then dec 1 st each side every row 6 times—3 sts remain; bind off remaining sts.

BACK YOKE

Cast on 79 (81, 83, 85) sts.

(RS) Begin 1 x 3 rib as follows: K0 (0, 1, 0), p3 (0, 0, 2), work 4-st repeat across to last 0 (1, 2, 3) sts, end k0 (1, 2, 1), p0 (0, 0, 2).

Shape Neck

(WS) Work in pattern across, cast on 2 sts.

(RS) Working cast on sts in pattern, work across all sts, cast on 2 sts.

Repeat last 2 rows once more—87 (89, 91, 93) sts.

Work even for 24 rows.

Bind off all sts in pattern, placing a marker 12 sts from each side edge for shoulder.

Sew cast-on edge to Back neck shaping, easing to fit.

SLEEVES

Cast on 43 (45, 47, 49) sts.

(RS) Begin Diamond st, centering pattern on piece as follows: P5 (5, 6, 6,), work 8-st repeat across to last 6 sts, k1, p5. Work even for 3 rows, end with a WS row.

Shape Sleeve

(RS) Beginning this row, inc 1 st each side every 6 (5, 5, 5) rows 18 (19, 21, 22) times—79 (83, 89, 93) sts.

Work even until piece measures 17 (17 1/2, 18, 18)" from the beginning, end with a WS row.

Shape Cap

(RS) Bind off 5 (6, 7, 8) sts at beginning of next 2 rows, 3 sts at beg of next 6 rows—63 (65, 69, 71) sts remain.

(RS) Dec 1 st each side every row 4 (6, 8, 10) times, every other row 8 times—39 (37, 37, 35) sts remain.

(RS) Bind off 5 (4, 4, 3) sts at beginning of next 2 rows—29 sts remain.

BO remaining sts.

FINISHING

Block pieces, if necessary. Sew Back Yoke to Front shoulders, matching pattern. Set in sleeves; sew sleeve and side seams. Note: center Sleeve at shoulder seam; marker at Bind-off edge of Yoke indicates the shoulder at that edge.

Collar

With RS facing, beginning at neck bind-off on right Front, using MC, pick up and knit 63 (65, 67, 69) sts up Front, across Back Yoke, and down left Front, easing in fullness around neck by skipping approx every other st, end at neck bind-off on left Front.

(WS) Begin St st; work even for 2 rows.

Work in Stripe sequence as follows, changing colors as indicated: work 1 row A, 1 row MC, 1 row B, 1 row MC, 1 row A, 3 rows MC, end with a RS row.

Turning Ridge and Facing: (WS) Using MC for remainder of Collar, knit 1 WS row.

Change to St st; work even for 9 rows.

Bind off all sts.

Turn Collar to WS along turning row; stitch neatly in place, joining Collar to neck edge of each front .

Edging: Using crochet hook and B, work 1 row sc, then 1 row rev sc evenly along Front edges, neck and Collar.

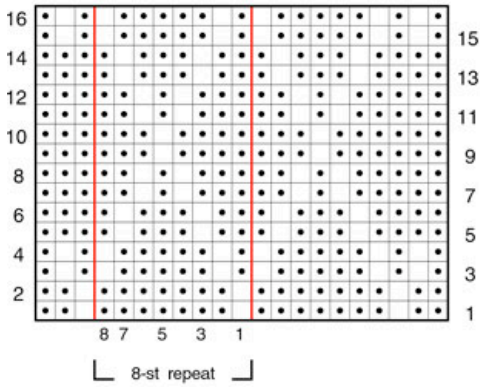
Sew Center Front insert in place (see photo), overlapping Edging onto shaped sides of Insert.

Ties: Using crochet hook and B, work 2 chains 36" long. Using yarn needle, threaded with chain, beginning at Collar, weave chain through sc row down neck to center Front. Using beginning tail, attach chain securely at Collar. Repeat for opposite side. If shorter ties are desired, unravel to desired length, then weave tail through chain.


Using yarn needle, weave in ends.

Embellishment: Using photo and diagram as a guide, smock ribbing on Yoke, Back and Front. Using A, work 4 to 6 small 'petals' in each diamond formed by the smocking. Add beads to center of flowers as desired.

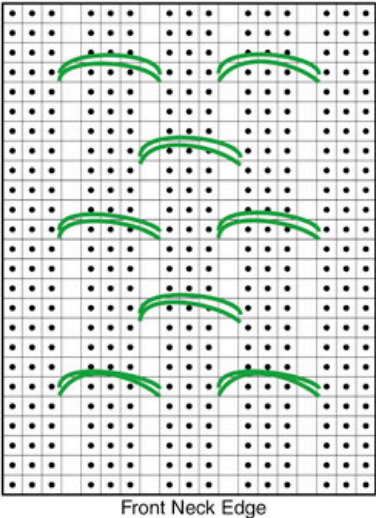
DIAMOND STITCH



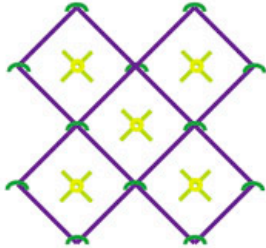
KEY

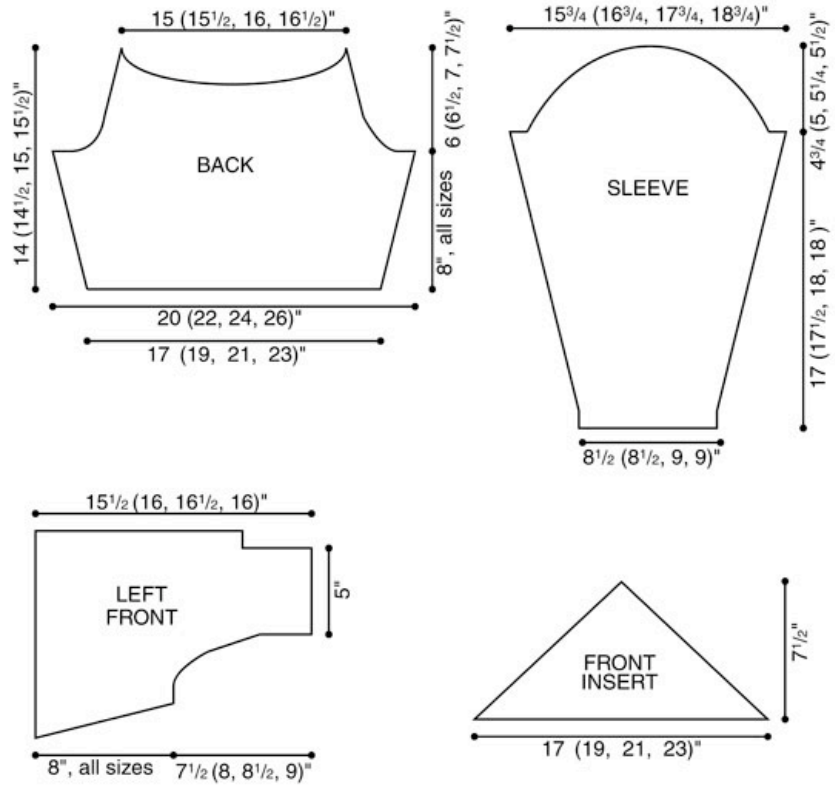
- ☐ Knit on RS, purl on WS
- ☒ Purl on RS, knit on WS
-  Smocking stitch
-  Bead

SMOCKING STITCH



EMBELLISHMENT





|| Yarns || Free Projects || Where to Buy || Links || Learning || Contact Us || Caron Connections
|| News || Latch Hook ||

Visit Bond America online

©2010 Caron International