

Metro Bike Map

April 2010



Bike Safety Tips

- Preparation**
- > Equip and maintain your bike: lights, reflectors, tires, brakes, cables, patch/tool kit, pump, etc.
 - > Use proper gear: bright reflective clothing, helmet, racks or panniers, etc.
 - > Stay informed: bike laws, bike skills education, and other resources
 - > Use online and printed maps: get to know alternate routes; residential streets often parallel major roads

- On the Streets**
- > Obey traffic signs and lights; follow lane markings; use hand signals
 - > Pay extra attention at intersections and driveways; make eye contact
 - > Ride with traffic, avoid riding in the door zone, watch for road hazards
 - > Remember that pedestrians have the right of way

- Buses and Rail**
- > Pass buses on the left with 3 feet of clearance
 - > Avoid blind spots
 - > Obey signs and signals at train crossings
 - > Cross rail tracks at a 90° angle; tracks are slippery when wet



Using a Bike Map

- CLASS I - Off-Road Paved Bike Path**
A completely separated bi-directional right-of-way designated for bicycles.
- CLASS II - On-Road Striped Bike Lane**
A striped lane for one-way bike travel on a roadway.
- CLASS III - On-Road Bike Route (signage only)**
Streets designated as preferred routes through high demand corridors.

Bikes on Metro

- Metro welcomes bikes on board. For the safety of all passengers, some restrictions apply. Visit metro.net for information about:
- > Bike rules
 - > Lockers
 - > Commute centers
 - > Helpful tips on successful bike commuting in LA County

Bike Resources

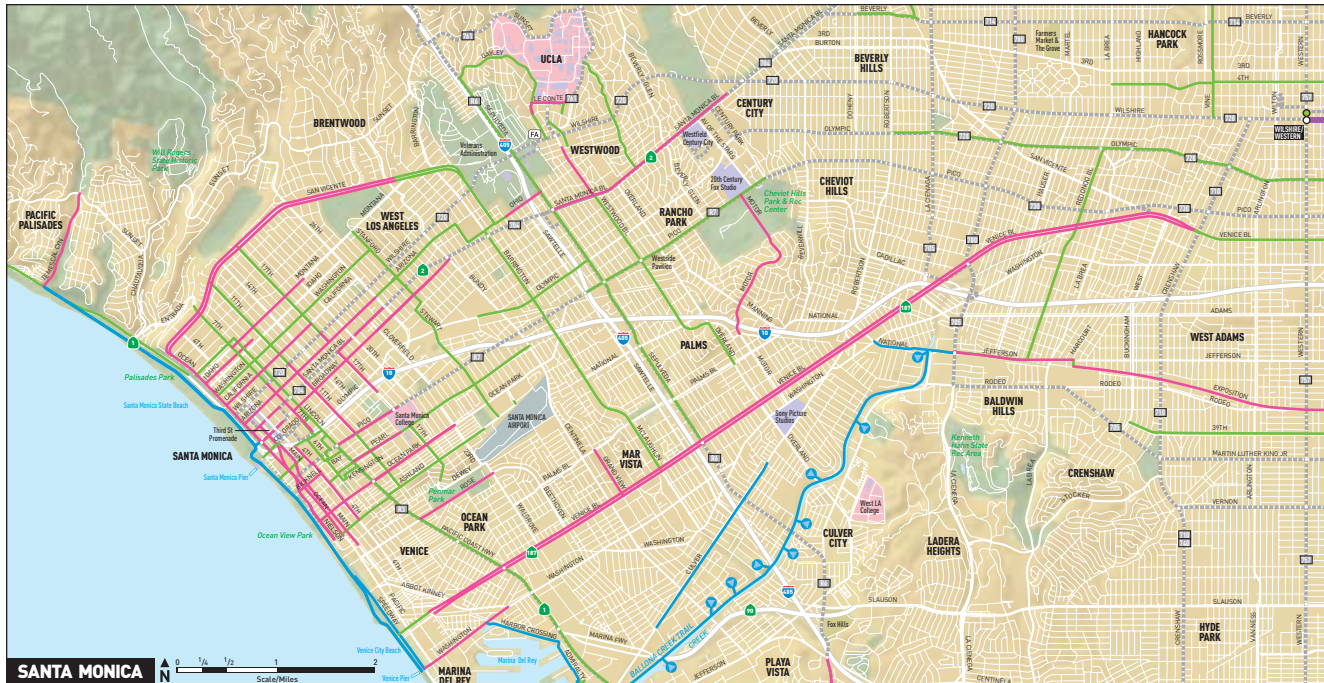
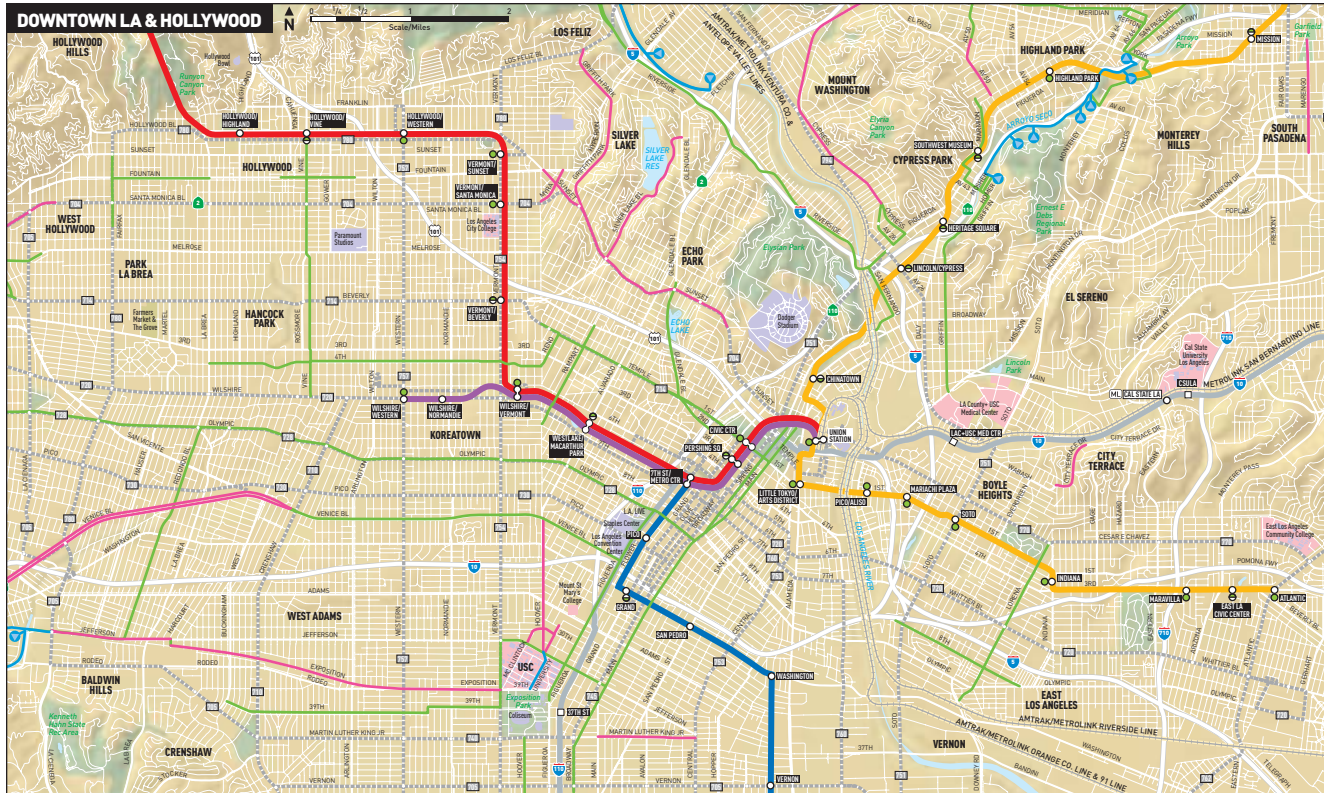
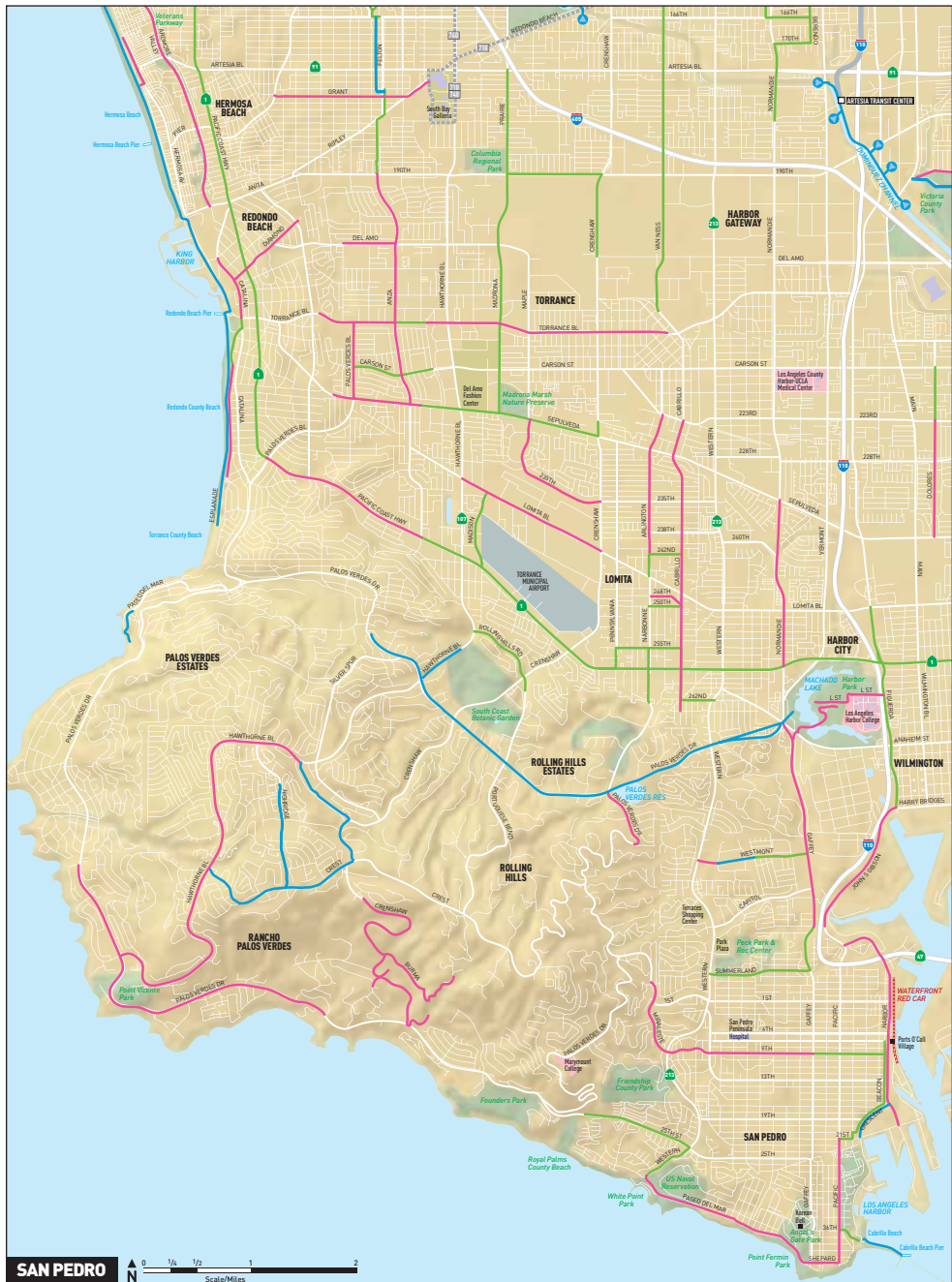
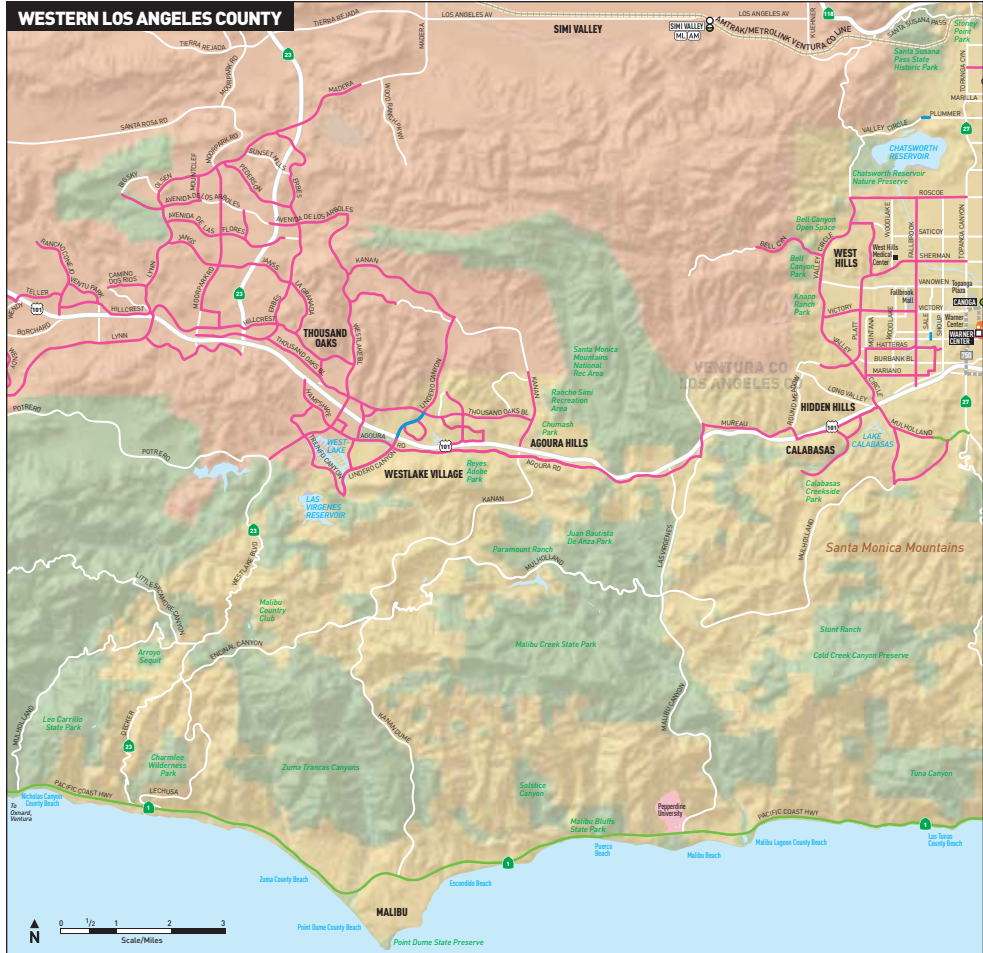
- Metro metro.net
- City of LA Dept of Transportation Bicycle Program bicyclerla.org
- LA County Bicycle Coalition (LACBC) labikecoalition.org
- Bike Station bikestation.org

Lost & Found

For bikes left onboard, please visit the Wilshire Customer Center located at 5301 Wilshire Bl (at La Brea Bl); open Monday-Saturday from 9am-5pm. For a recorded message, call: 323.937.8920

A Word of Caution

Eating and drinking beverages are prohibited on Metro Bus and Metro Rail.



Bike Path (Class I)	Bike Lane (Class II)	Bike Route (Class III)	Metro Rapid Bus Line & Stop
Bike Racks	Bike Lockers	Bike Racks & Lockers	Municipal Rapid Bus Line & Stop
Class I Bike Path Access Point	Bike Station/Bike Parking Center	Tourist Attraction/Sports Venue	Point of Interest
Metro Rail Line & Station	Transfers	Shopping Area	Amtrak Station
Metro Liner & Station	Transitway & Station	School/College/University	Flyaway
MetroLink & Station	Park/Recreation Area	Airport/Civic/Government	Interstate Freeway
			US Highway or Freeway
			State Highway or Freeway

APR 2010 Subject to Change