



Creating maps with rich content about your indigenous community

Trainer: Karin Tuxen-Bettman

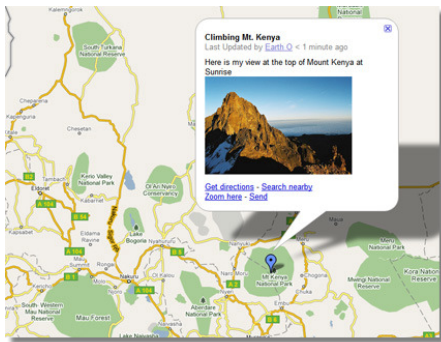
Indigenous Mapping Network – Google
Tribal Geo Tech Workshop

February 25-26, 2010

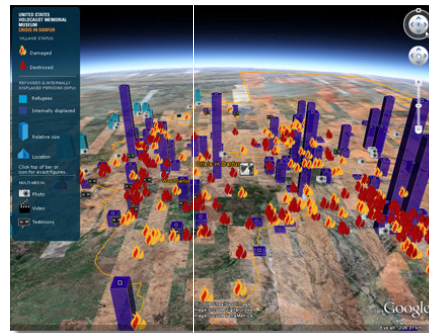


Session Agenda

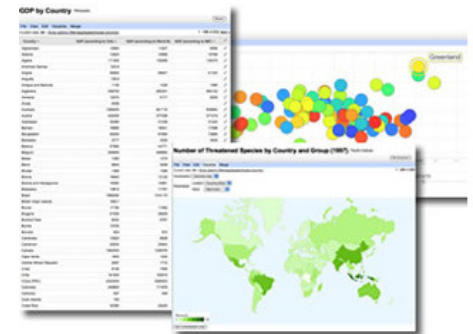
- Creating a simple easy map with Google Maps
- Creating an immersive 3D map with Google Earth
- Converting between GIS and KML
- Creating maps with large datasets



**Google
Maps**



**Google
Earth**



**Google Fusion
Tables**



Focus on Google Maps

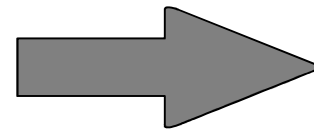
- Hands-on Exercises:
 - Creating points, lines, & polygons
 - Adding photos & videos to balloons
 - Collaborating on your map
 - Importing KML to your map
 - Embedding your Google Map on your website
 - Viewing your My Map in Google Earth



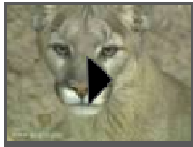
Step 1. Assemble your data



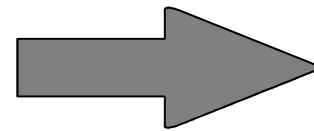
Photos, images, & scanned maps



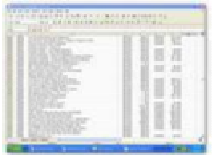
Upload to PicasaWeb or Flickr



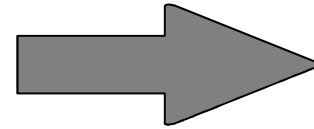
Videos



Upload to YouTube



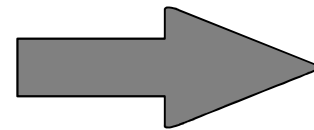
Spreadsheets & databases with spatial coordinates



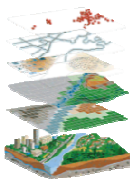
Import to Google Earth or use Fusion Tables



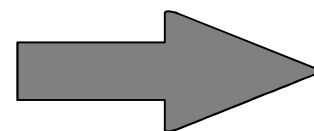
Personal stories & blog posts



Import into Blogger



GIS & GPS data



Convert to KML

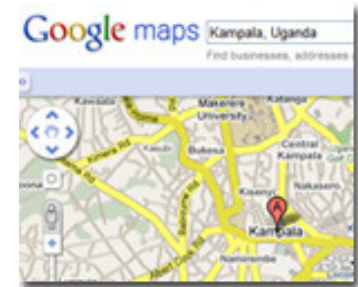


Step 2. Decide on the right tool

Google Maps

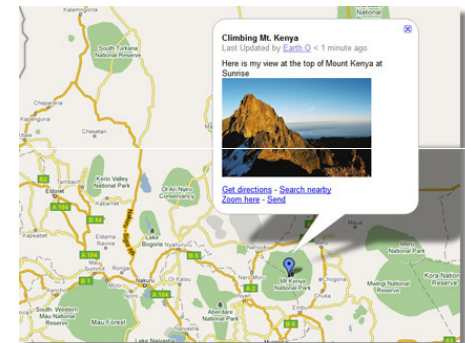
Google Maps

- Search for places all over the world.
- Begin searching at maps.google.com.



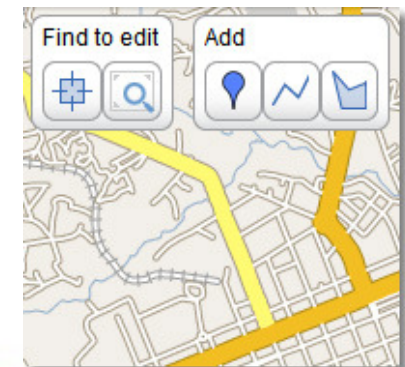
Google My Maps

- Create personalized, customized maps.
- Create a map at maps.google.com, then click on “**My Maps.**”



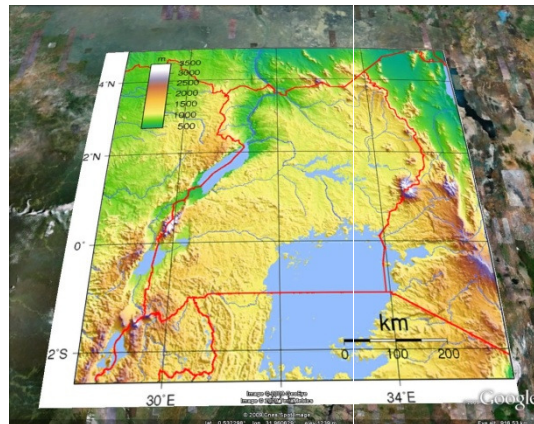
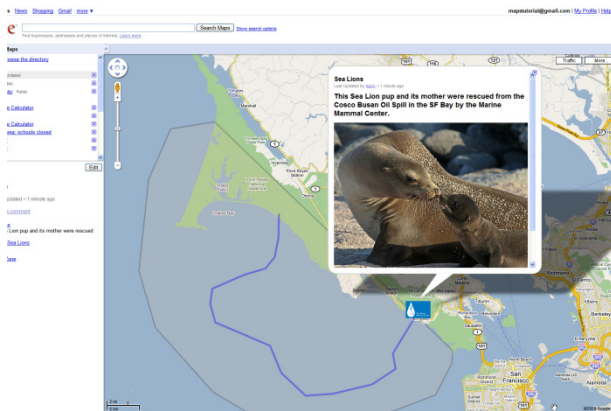
Google Map Maker

- Map a neighborhood, a city or an entire country.
- Draw roads and landmarks.
- Add local businesses.
- Edit locations added by other map makers.
- Get started at mapmaker.google.com.
- Download data at mapmaker.google.com/datadownload.



Step 3. Get your data into Earth & Maps

1. Add data directly to Google Earth or Maps (as points, lines, and polygons)
2. Add content to pop-up balloons, including text, photos, and YouTube videos.
 - Tutorials at <http://earth.google.com/outreach>
3. Add images and models to the map (including image overlays, photo overlays, and models)



oogle™

Step 3. Get your data into Earth & Maps

4. Import GIS data

-- Tutorial at <http://earth.google.com/outreach>

5. Create a map from a table

-- Fusion Tables Mapper: <http://tables.googlelabs.com>

6. Create narrated tours in Google Earth 5.0 or above.

-- Go to <http://earth.google.com/outreach> for tutorial.

7. Embed Earth & Maps on your website!

-- Go to <http://earth.google.com/outreach> for tutorial.



Step 4. Promote your project!

Submit to Google Earth Outreach **Showcase**

- <http://earth.google.com/outreach/showcase.html>

Submit to Google Earth **Community**

- <http://bbs.keyhole.com/>

Embed your map in a website, such as Blogger

- Embed MyMaps map or Google Earth file
- Use Maps & Earth Application Programming Interface (API)



How do you get started?

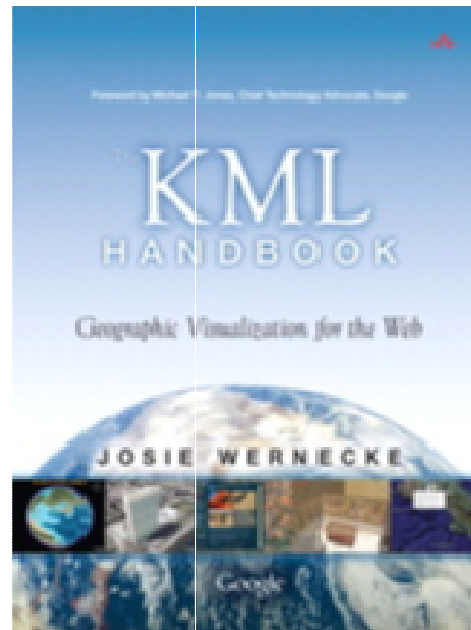
See what others have created:

- <http://earth.google.com/gallery>
- <http://earth.google.com/outreach/showcase.html>

Work through tutorials:

- <http://earth.google.com/outreach/tutorials.html>

Practice!
Practice!
Practice!



More tutorials at our website

<http://earth.google.com/outreach>

Google earth

Change language: - English (US) ▾

[Outreach Home](#)

[Showcase](#)

Tutorials

[Community](#)

[Grants](#)

[Earth Home](#)

[Download Google Earth](#)

Create Maps with Google Earth & Maps Tutorials

Video Tutorials

[All Tutorials](#)

[Tools & Resources](#)

New to Earth & Maps?

To get started, watch these shorts videos on these introductory topics. To start a tutorial, click "**View full tutorial.**"

Google Earth

Annotate Google Earth

[Add photos & image overlays](#)

[Add views & perspectives](#)

[Create a narrated tour](#)

[Embed Earth in your website](#)

Google Maps

[Create a map with My Maps](#)

[Collaborate on your Maps](#)

[Embed Maps in your website](#)

Google Maps for Mobile

[Overview of Maps for Mobile](#)

Google SketchUp

[Overview of SketchUp](#)

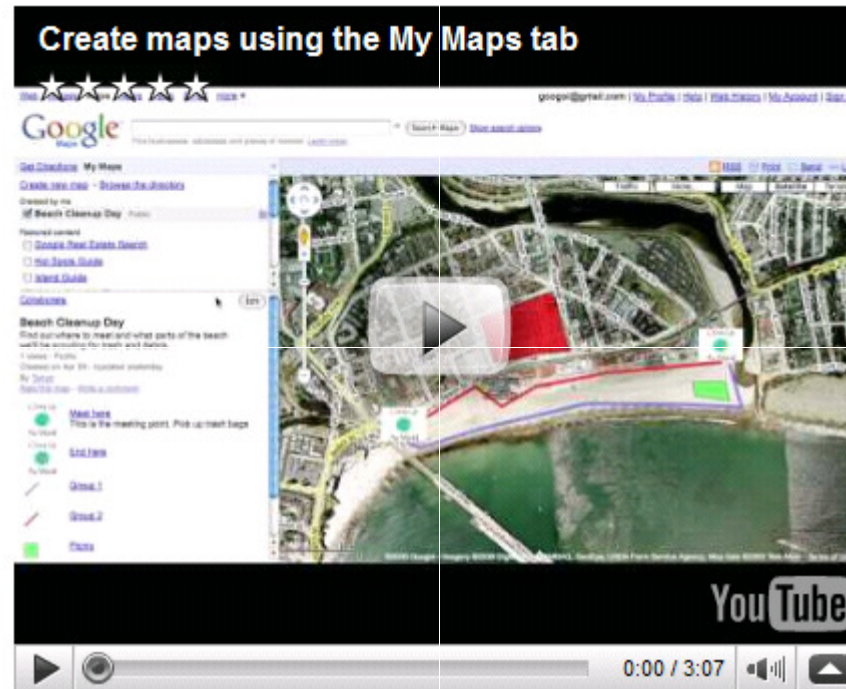


Add placemarks (or points), paths (or lines), and polygons to Google Earth. Then embed images and YouTube videos to your balloons.

[View full tutorial](#)

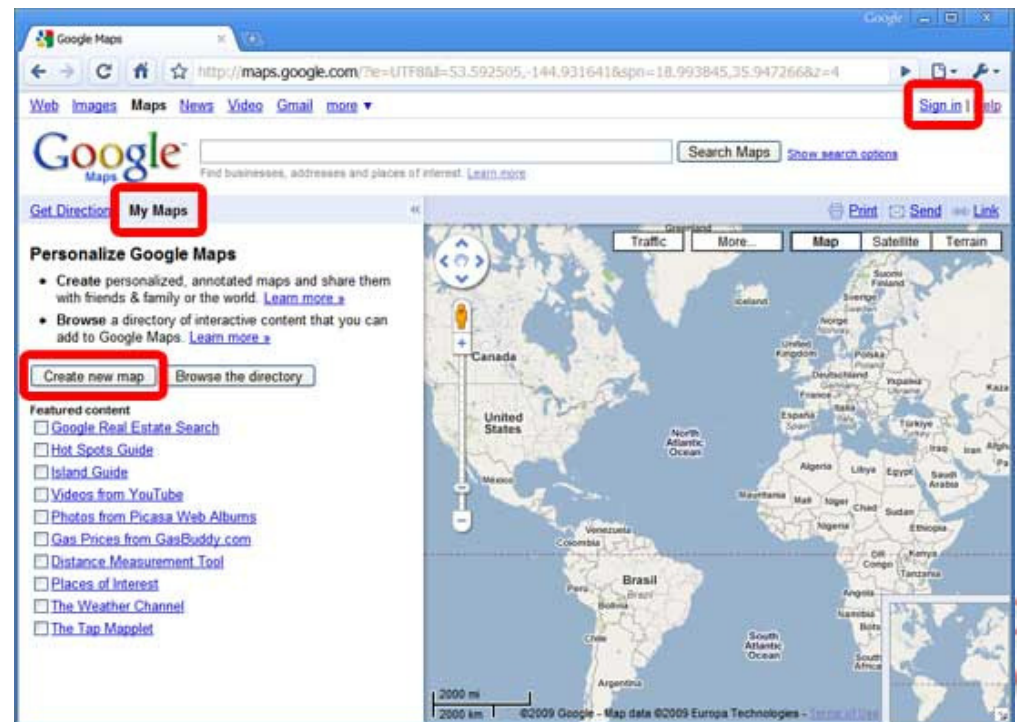


Demo: Create maps using the My Maps tab



Create a New My Map

1. Go to maps.google.com
2. Click the “My Maps” link.
3. Click the “Get Started” button or “Create New Map.”
4. Give your new map a title and description.
5. Set the Privacy and Sharing Settings to “Unlisted.”

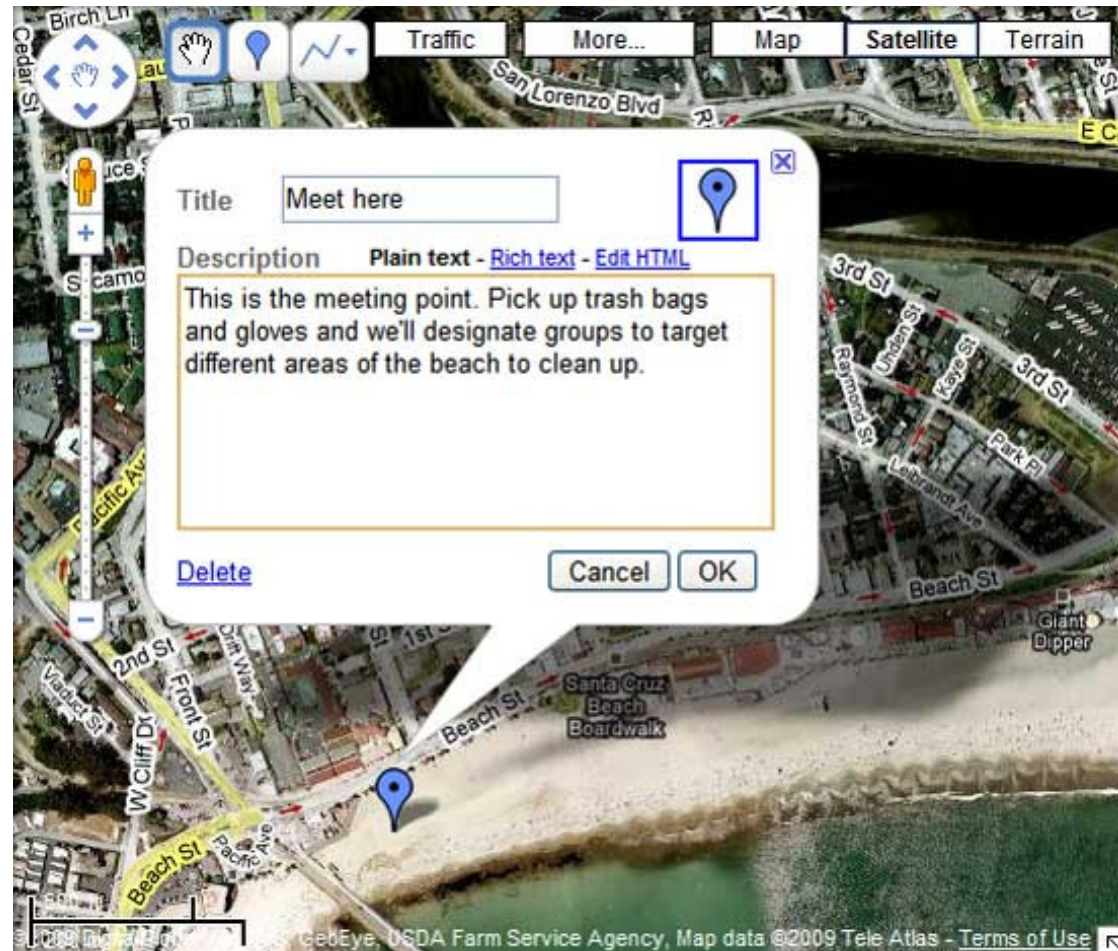


Create a Point in Google My Maps


1. Click the placemark button to add a new placemark.
2. Give the new placemark a title and description.



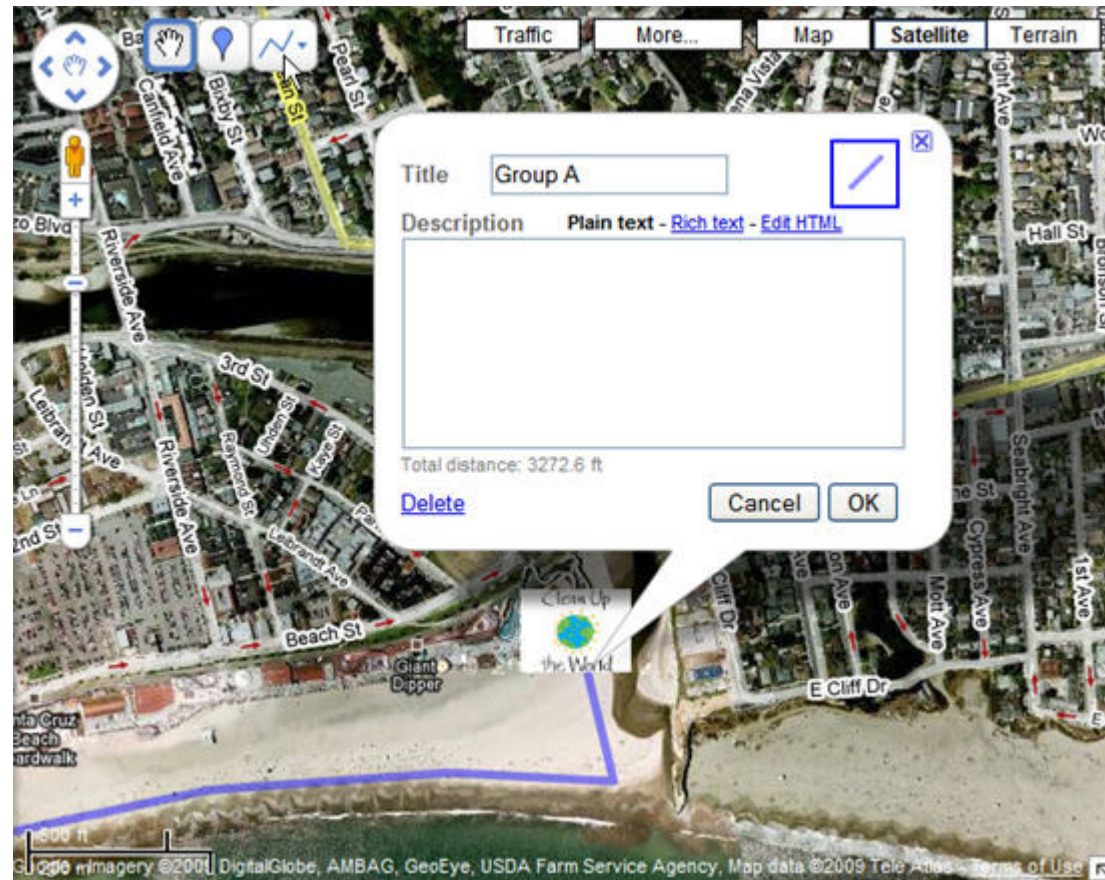
You can use “Rich Text” to add formatting, images, and video.



Create Lines & Polygons

1. Click the line  button to add a new line.
2. Give the new line a title and description.

You can use “Rich Text” to add formatting, images, and video.



Web address of workshop site

sites.google.com/site/imnworkshop

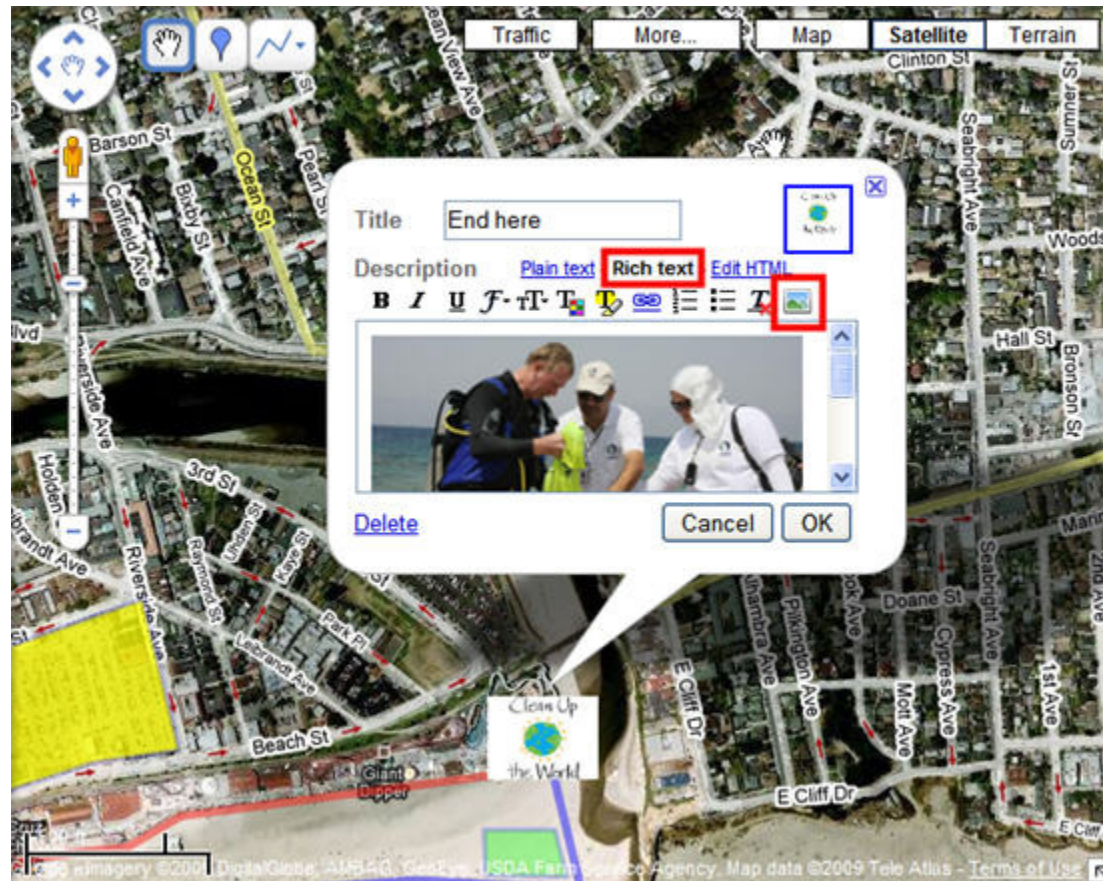
If you click on “Data, Files, and Links for Workshop”, you can access the IMN logo for practicing adding your own custom icons.



Embed Photos into Balloons

To copy image URL from the web:

1. Go to <http://images.google.com>
2. Find an image that you want to add.
3. Right-click & choose “Copy Shortcut”
4. Click on the icon to insert image.
5. Paste in the URL shortcut, and click OK.



Embed Videos into Balloons

To copy video embed code from the web:

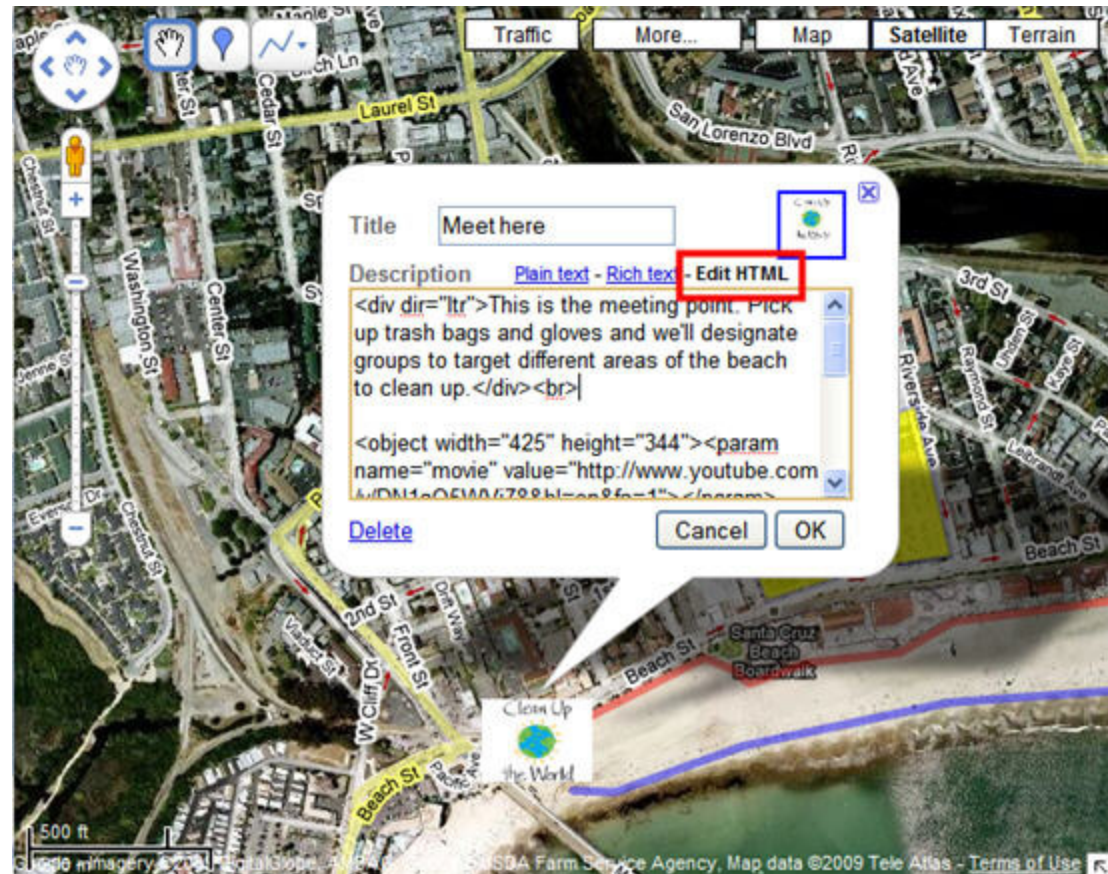
1. Go to <http://youtube.com>

2. Find an video that you want to add.

3. Copy the “Embed” code.

4. Back in your balloon editing, click on “Edit HTML”

5. Paste in the Embed code, and click OK.



Collaborating on Your Maps

Collaborate on your maps

Google Maps

Find businesses, addresses and points of interest. Search Maps Show search options

Get Directions My Maps

Create new map - Browse the directory

Created by me

- Adopt-a-Bike-Route Public
- Beach Cleanup Day Public
- Unfaded Map of Coccol Unviewed
- Public Map of Coccol Public
- Outreach Launch sites Public

Adopt-a-Bike-Route

Join local cycling clubs in their efforts to clear roads along popular bike routes in the Bay Area map the route you ride on most frequently and trash along your next ride.

0 views - Public

Created on Apr 28 - Updated 4 1 minute ago

By Earth.G

[Save this map](#) - [Write a comment](#)

[Club One](#)

Invite collaborators

Invite people as collaborators

Separate email addresses with commas

Message:

I've shared a map with you called Adopt-a-Bike-Route: <http://maps.google.com/maps/@37.7749, -122.4204, 15z>

ms=0&msid=116494637670518150337_000498a76890d6772c22a

Add your message (optional)

Save me a copy of this invitation

Manage collaborators

Advanced Permissions

Only the owner may change these settings

- Collaborators may invite others
- Allow anyone to edit this map

Collaborators: 0/3 - [Open link](#)

Collaborators may edit the map and invite others

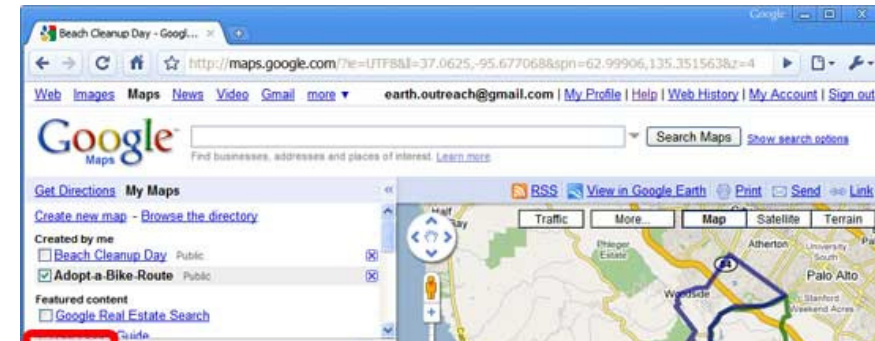
Mo - owner

YouTube

0:00 / 2:44

Collaborate on Your Map

1. To collaborate on your map, click “Collaborate”
2. Add the emails you want to share the map with.
3. Click “Send invitations”



Invite collaborators

Invite people as collaborators

cyclingteam1@gmail.com,
cyclingteam2@gmail.com,
cyclingteam3@gmail.com

Separate email addresses with commas

Message:

I've shared a map with you called Adopt-a-Bike-Route:
http://maps.google.com/maps/ms?
ie=UTF&msa=0&msid=
116494637070518196037.000468a76899d6772c22a

Add your message (optional)

Happy Riding!

Send me a copy of this invitation

Manage collaborators

Advanced Permissions
Only the owner may change these settings

Collaborators may invite others

Allow anyone to edit this map

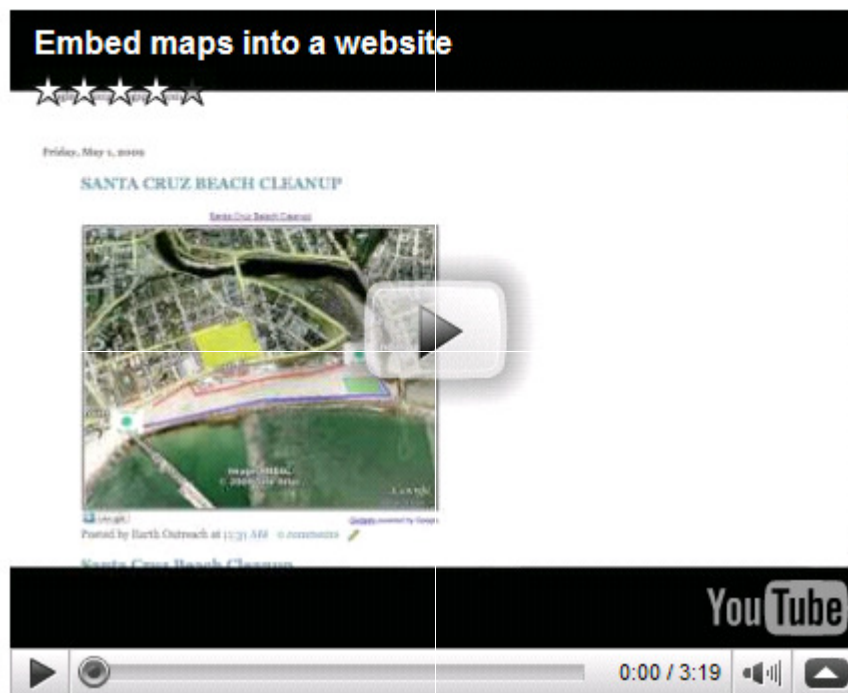
Collaborators (1) - [remove all](#)

Collaborators may edit the map.

Me - owner

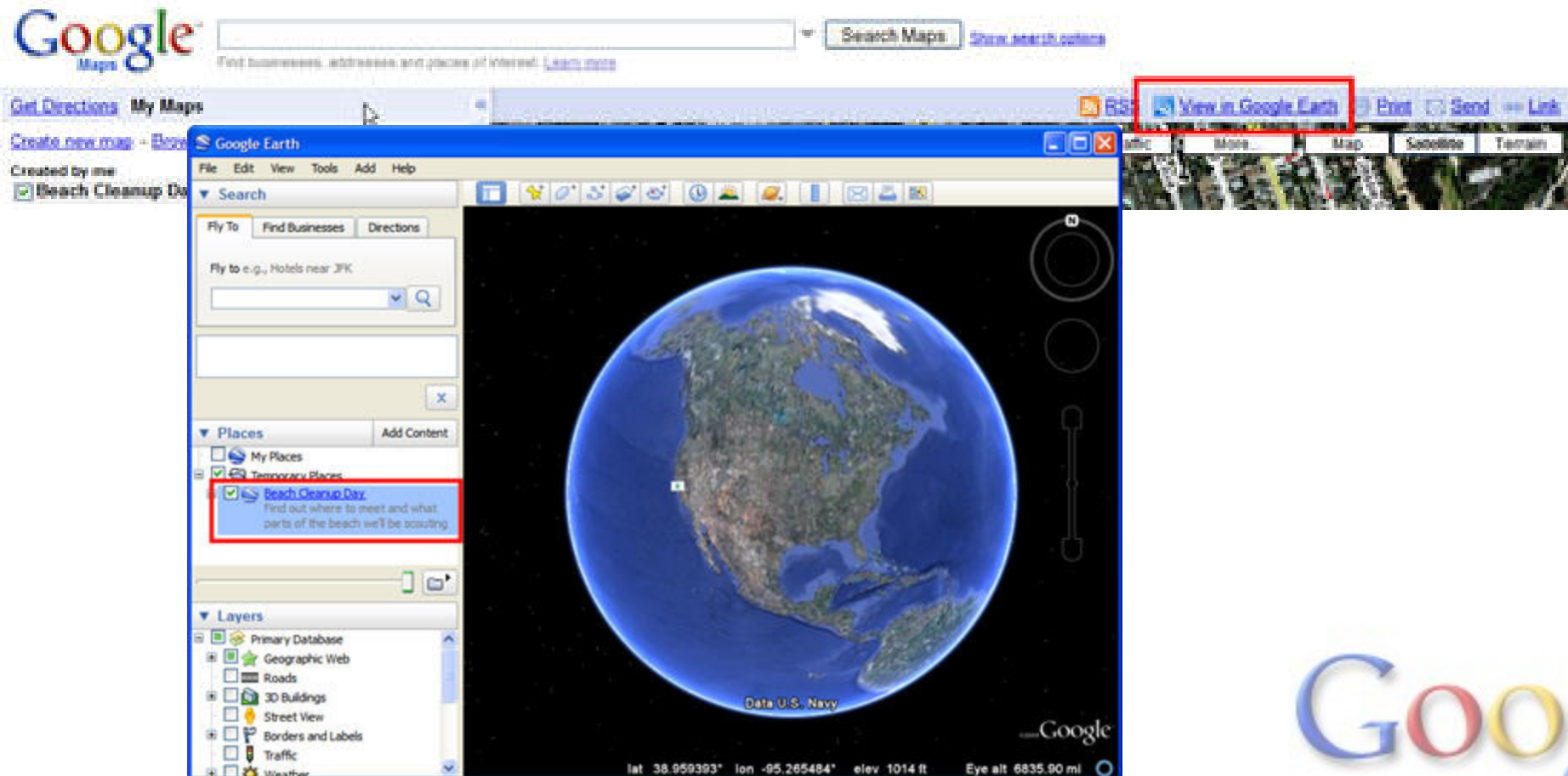


Embedding your My Map in your Website



View your My Map in Google Earth

1. Click the “View in Google Earth” link at the upper-right of your map.



Review of Google Maps

- Navigating in Google Maps
- Creating content in Google Maps
 - Placemarks (points)
 - Lines (paths)
 - Polygons (shapes)
- Changing style (color, width, transparency)
- Embedding images and videos in balloons
- Collaborating on a Google Map
- Embedding a Google Map on your website
- Viewing your map in Google Earth



Examples of My Maps

- Boulder Creek Cleanup: [URL](#)
- CleanUpTheWorld.org: [URL](#)
- Finished [product](#) of tutorial (beach cleanup)
- KPBS Fire map: [URL](#)
- Catanduanes: <http://earth.google.com/outreach/showcase.html>

Web Images Videos Maps News Shopping Mail more ▾

Google maps Search Maps Show search options

Find businesses, addresses and places of interest.

Get Directions My Maps Save to My Maps

Boulder Creek Clean Up
Google is sponsoring a worldwide clean-up day. This clean-up covers a half mile of Boulder Creek that runs from the Broadway bridge to the 6th Street bridge. 28,054 views - Public
Created on Sep 13, 2007 - Updated Oct 10, 2007
By [Nickname unavailable](#)
★★★★★ 1 ratings · 1 comments

- Park Here**
You can park here or across the green in library
- Meet Here**
Cross the pedestrian bridge and meet at the
- Walking Route to Meeting Place**
Walk past the shuffleboard courts and across
- Clean Up Path**
Our goal is to clean up the litter from the
- Clean-Up Route**
This is the half mile of Boulder Creek we will
- Walking Route to Start Line**

Starting Line
17 bags, 300 lbs. of trash.
Thanks to all who volunteered their time to

Dunbar slam dunks an Einstein brother.
Plastic Princess
Samantha is the quicker-picker-upper.

It's a family affair.
Itinerant investment
Final: Denver 16 / Cleveland 17

Fellow Googler
The Blue Hand Group
Looks like a treasure map.
Aren't there laws against child labor, Dad?

Getting in touch with your inner tube.
Last Updated by [Nickname unavailable](#) on Oct 10, 2007

Directions Search nearby Save to... more ▾

Tomorrow: Focus on Google Earth

- Hands-on Exercises:
 - Creating points, lines, & polygons
 - Adding photos & videos to balloons
 - Adding image overlays
 - Converting GIS data
 - Creating a narrated tour
 - Saving your file and uploading it to the Internet
 - Publishing & Embedding Google Earth on your website

