

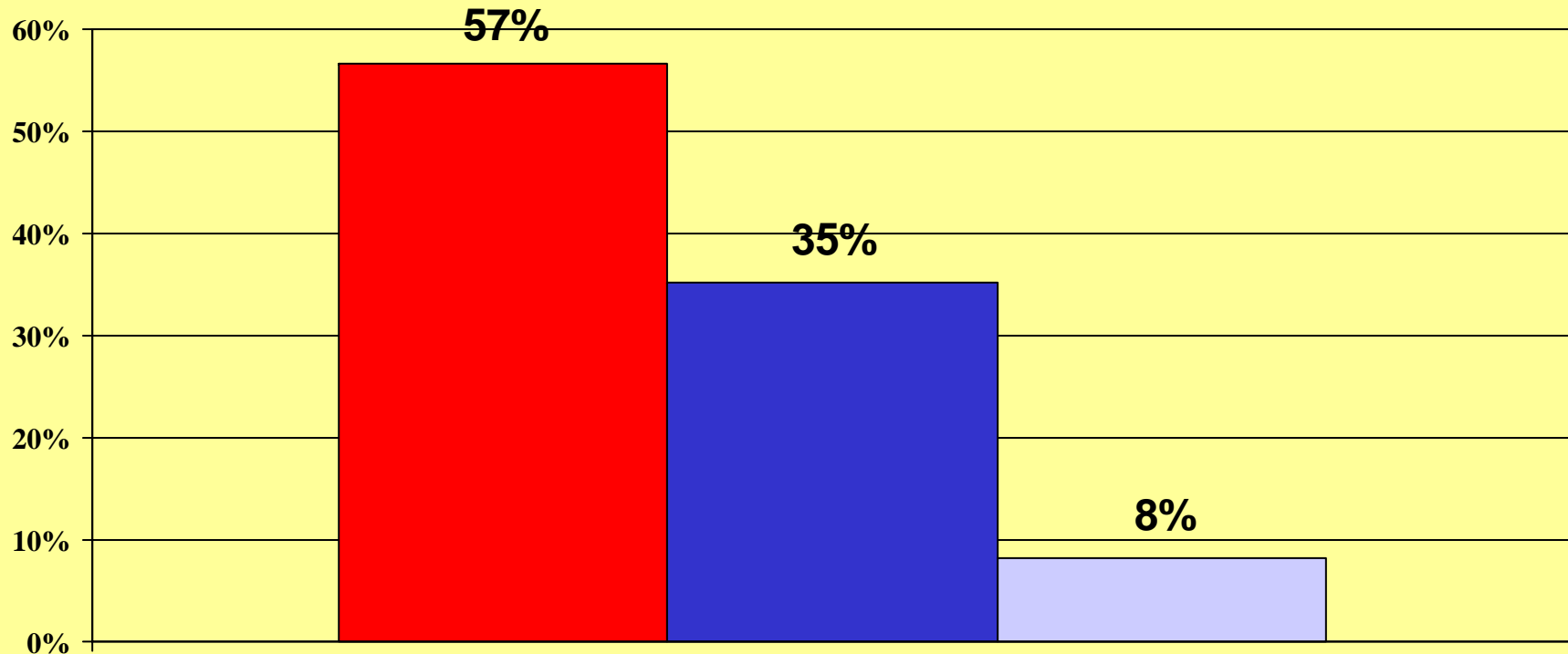
CIVITAS INSTITUTE
DECISION **M**AKER
POLL

Charlotte-Mecklenburg Special Edition

O c t o b e r 2 0 0 7



Do you feel things in Mecklenburg County are generally headed in the right direction or have gotten off on the wrong track?

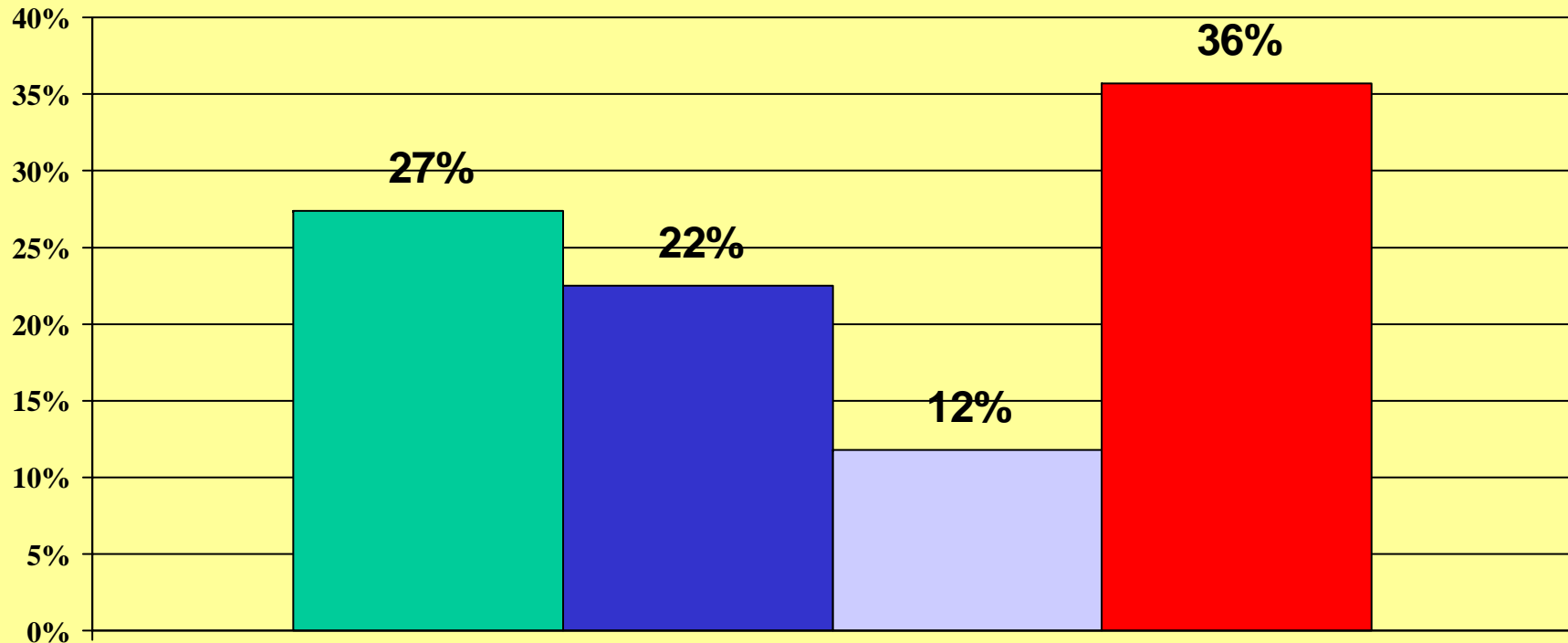


October 2007

■ Right direction ■ Wrong track ■ not sure

Tel Opinion Research, LLC

Which of the following issues needs the most attention from Charlotte and Mecklenburg government:

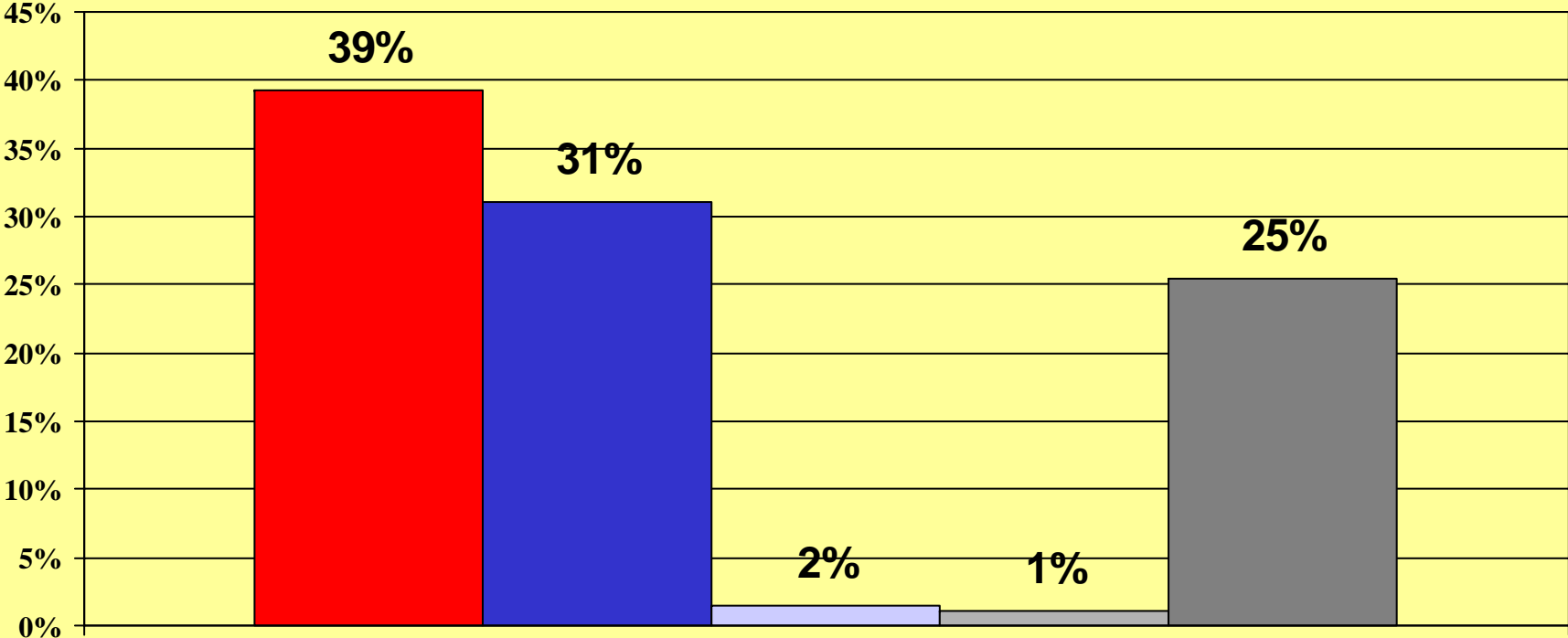


October 2007

■ Construction/new schools ■ New/improved highways ■ Light rail system ■ Crime and public safety

Tel Opinion Research, LLC

Do you think taxes in Mecklenburg County are:

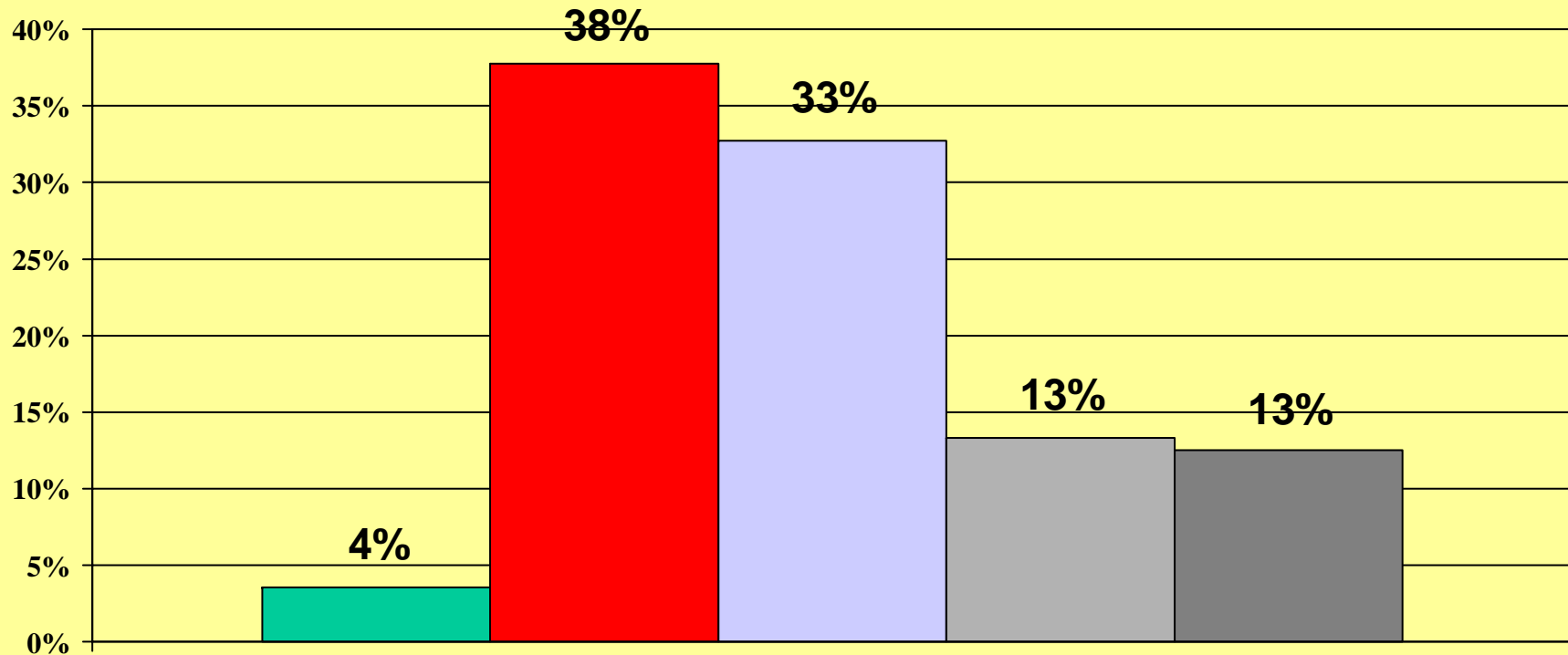


October 2007

■ Much too high ■ Somewhat high ■ Somewhat low ■ Much too low ■ just about right

Tel Opinion Research, LLC

How would you rate the quality of education in the Charlotte- Mecklenburg School System:

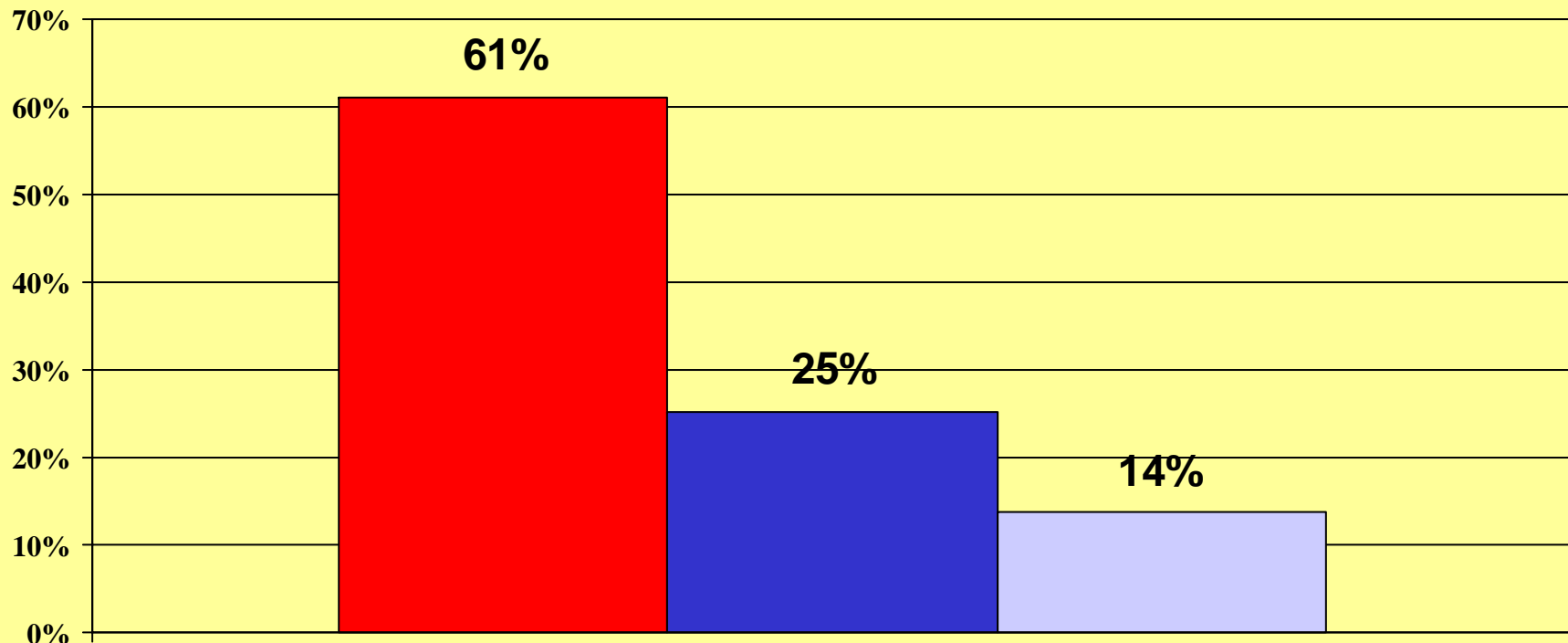


October 2007

■ Excellent ■ Good ■ Only fair ■ Poor ■ not sure

Tel Opinion Research, LLC

Do you think the Charlotte-Mecklenburg school system has gotten too big and should be divided into smaller districts?

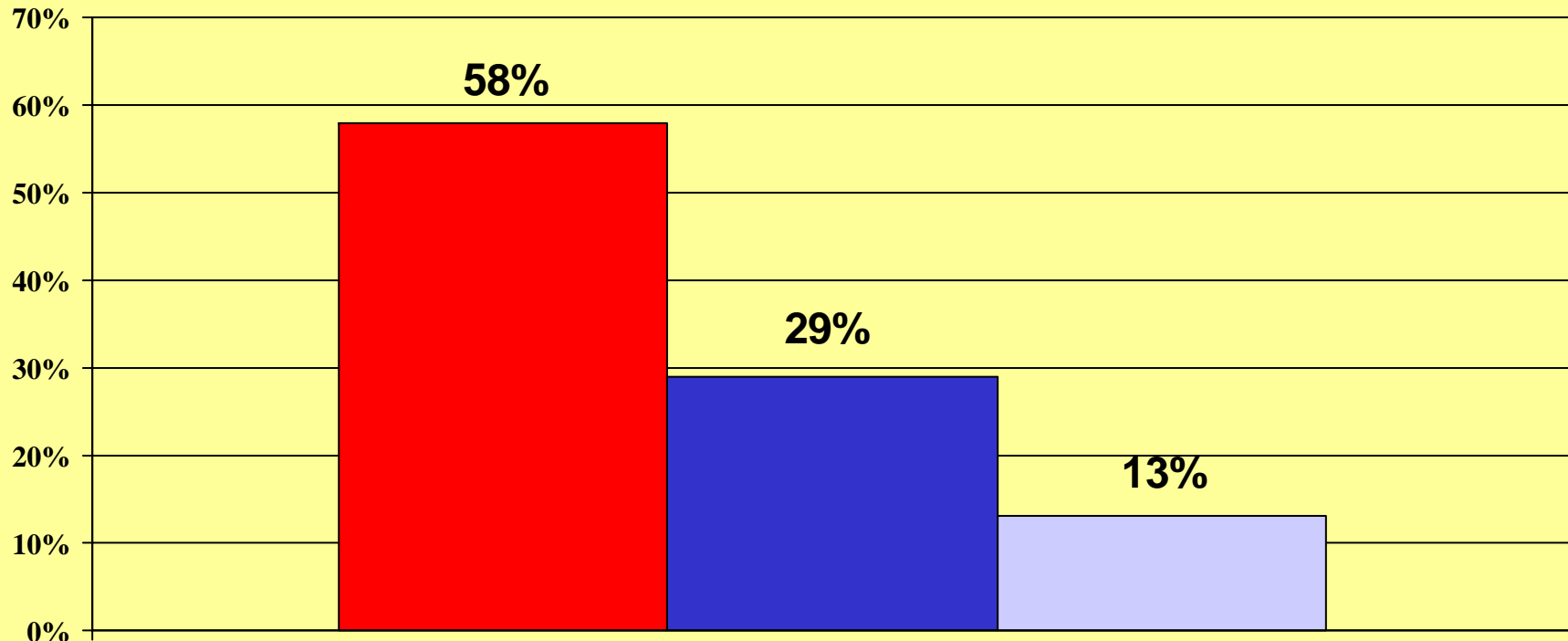


October 2007

■ Yes ■ No ■ Not sure

Tel Opinion Research, LLC

If the \$516 million bond referendum for building new public school facilities were held today, would you be voting for or against this Referendum?

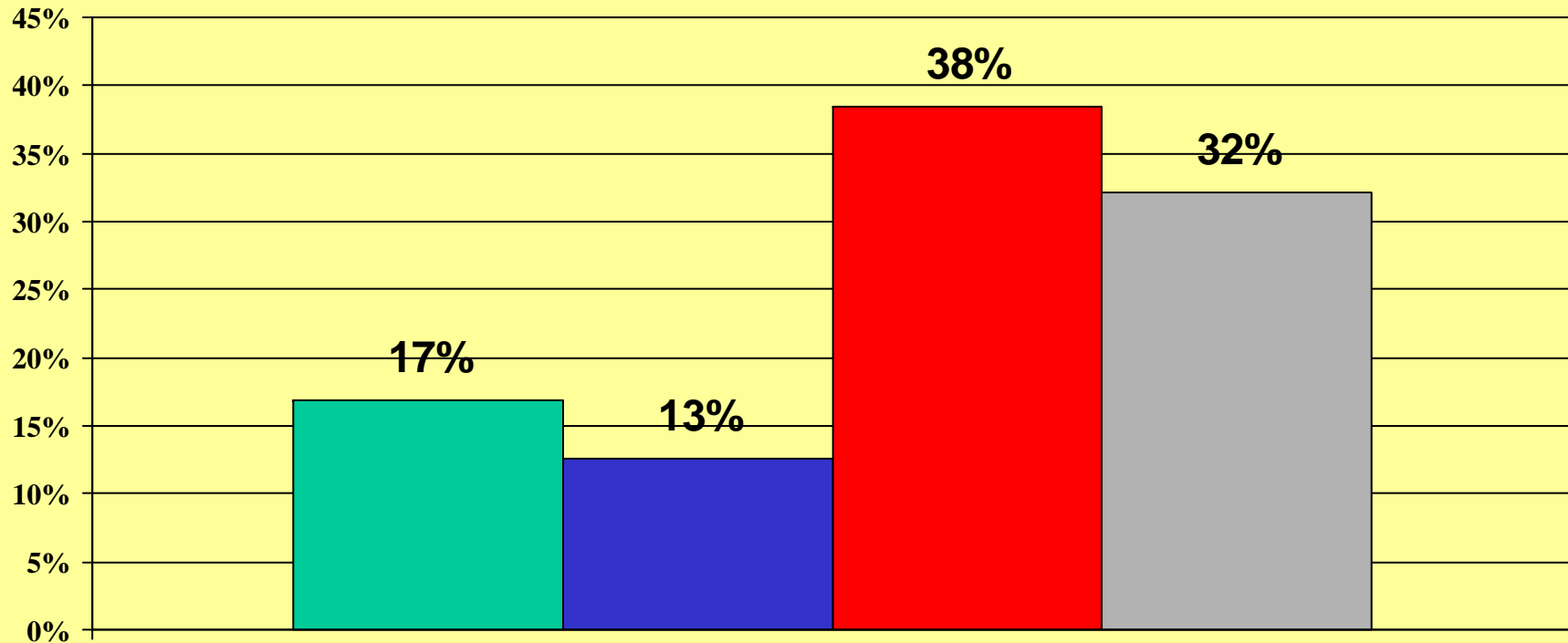


October 2007

for against not sure

Tel Opinion Research, LLC

Opinion of Beverly Earle

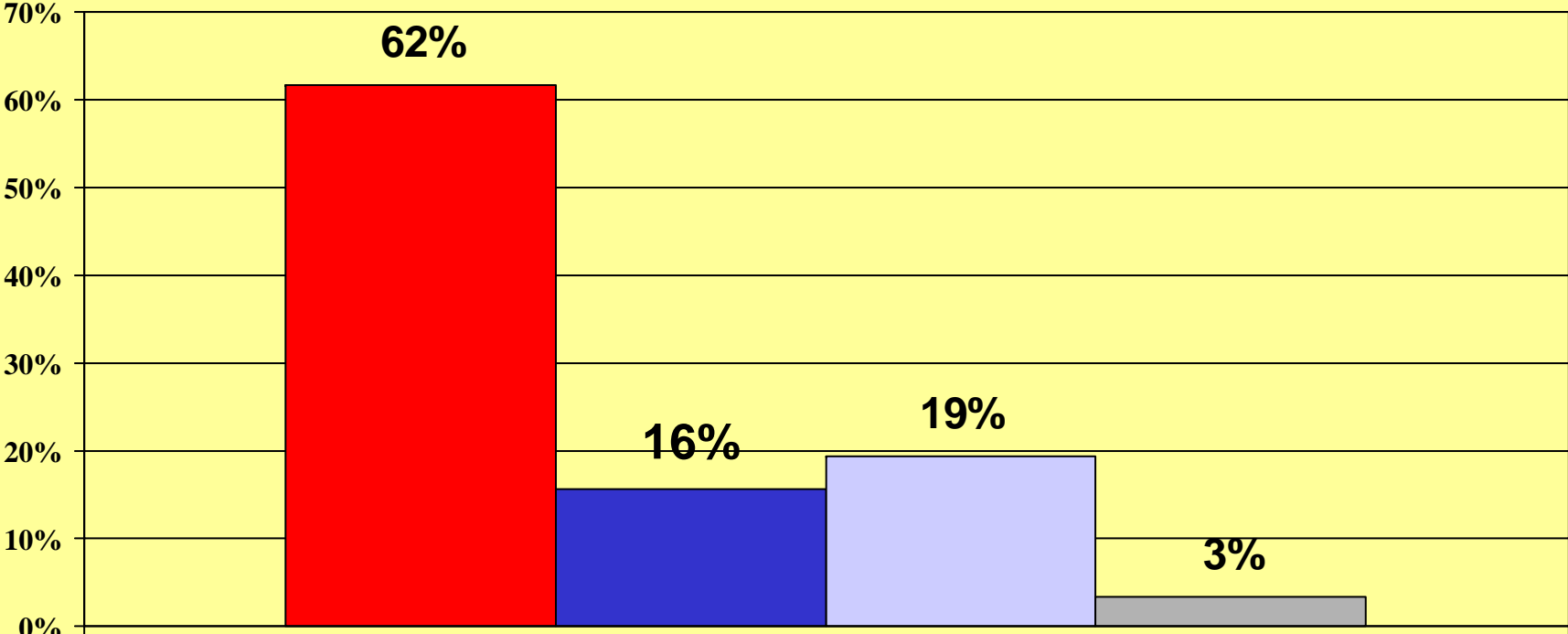


October 2007

Favorable Unfavorable No opinion Not aware

Tel Opinion Research, LLC

Opinion of Pat McCrory

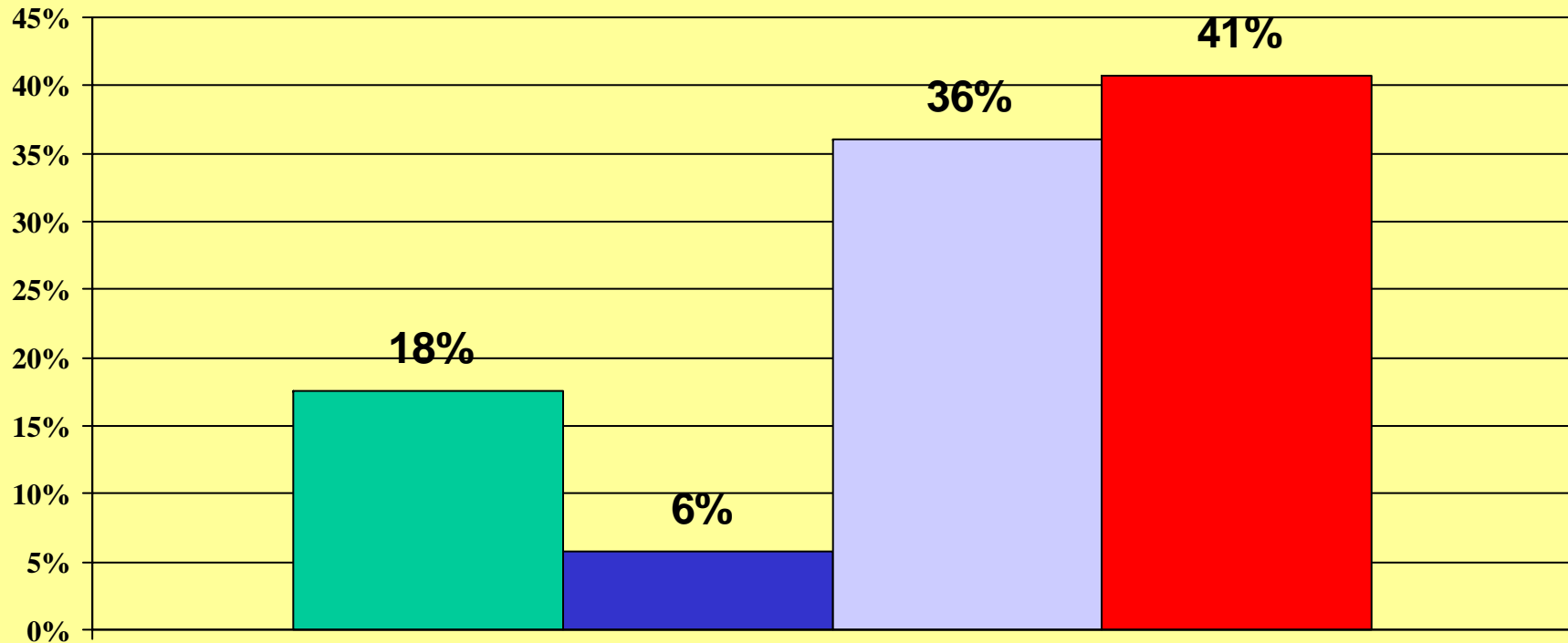


October 2007

Favorable Unfavorable No opinion Not aware

Tel Opinion Research, LLC

Opinion of Mike Gminski

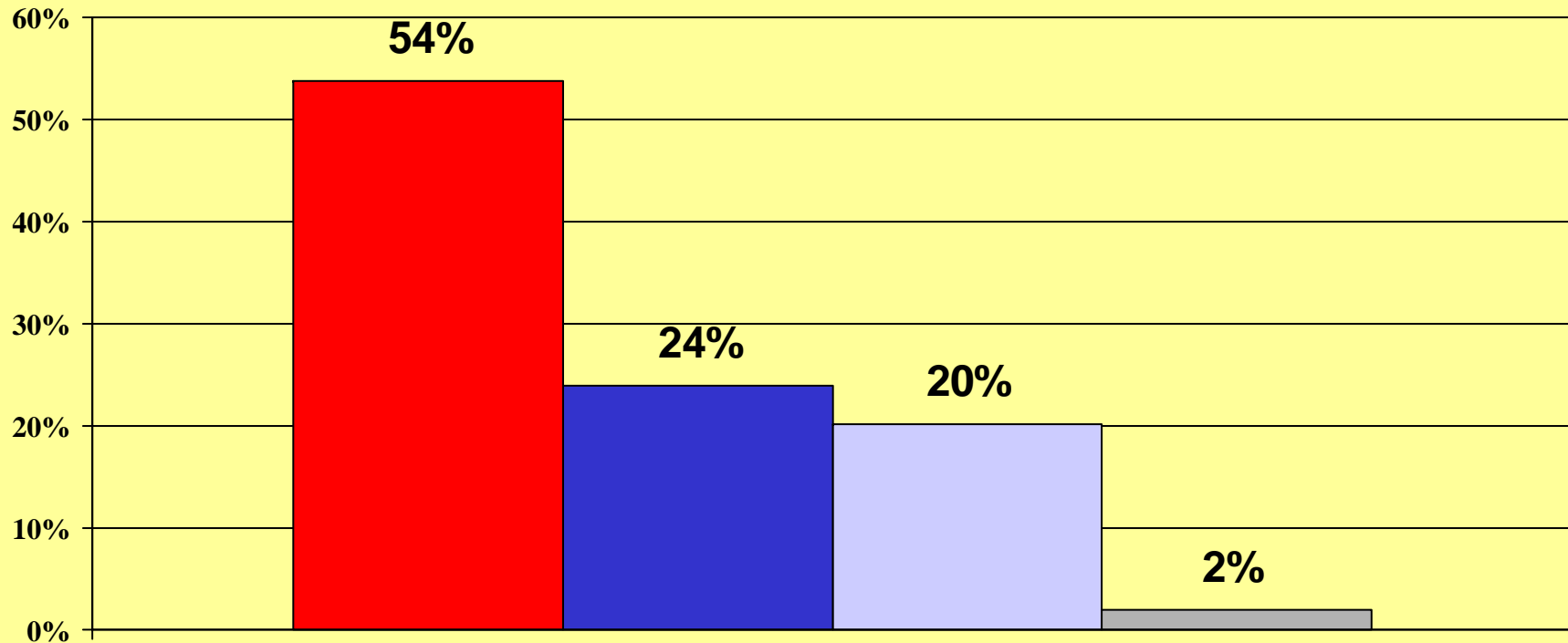


October 2007

Favorable Unfavorable No opinion Not aware

Tel Opinion Research, LLC

Opinion of Elizabeth Dole

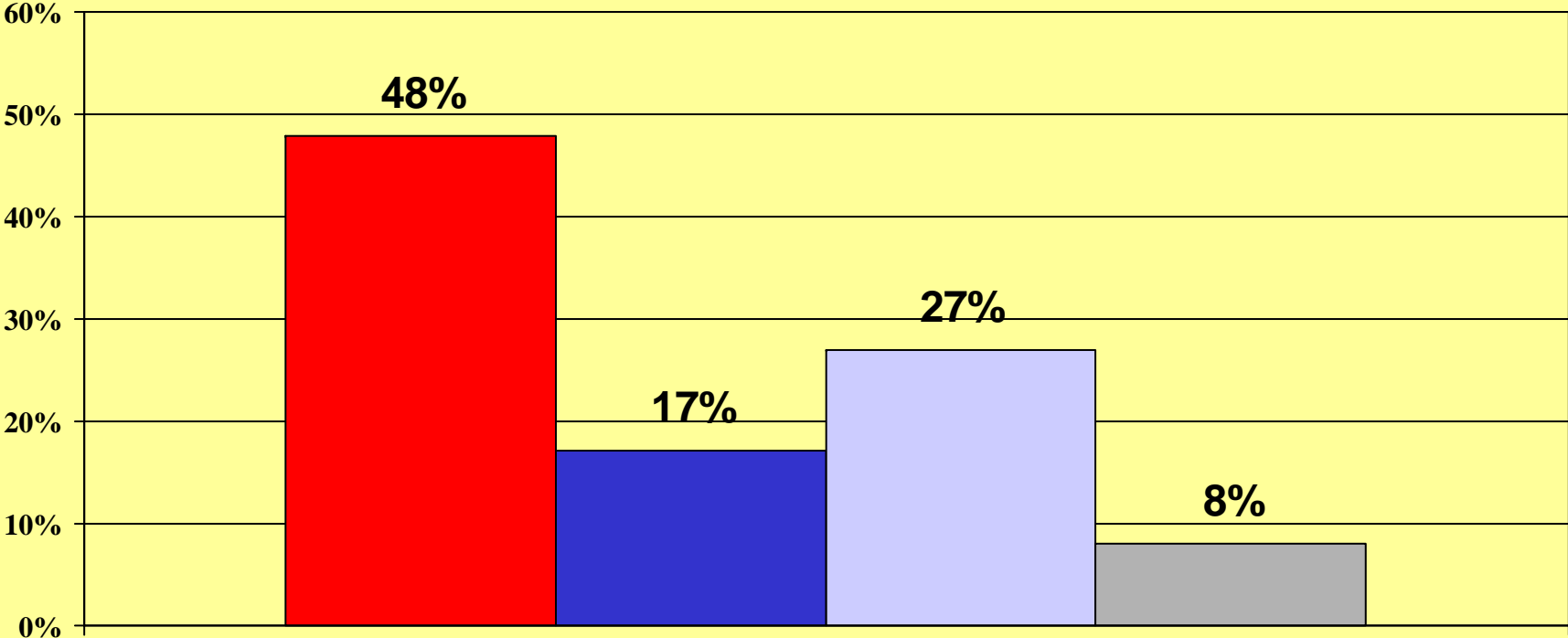


October 2007

■ Favorable ■ Unfavorable ■ No opinion ■ Not aware

Tel Opinion Research, LLC

Opinion of Charlotte Chamber of Commerce

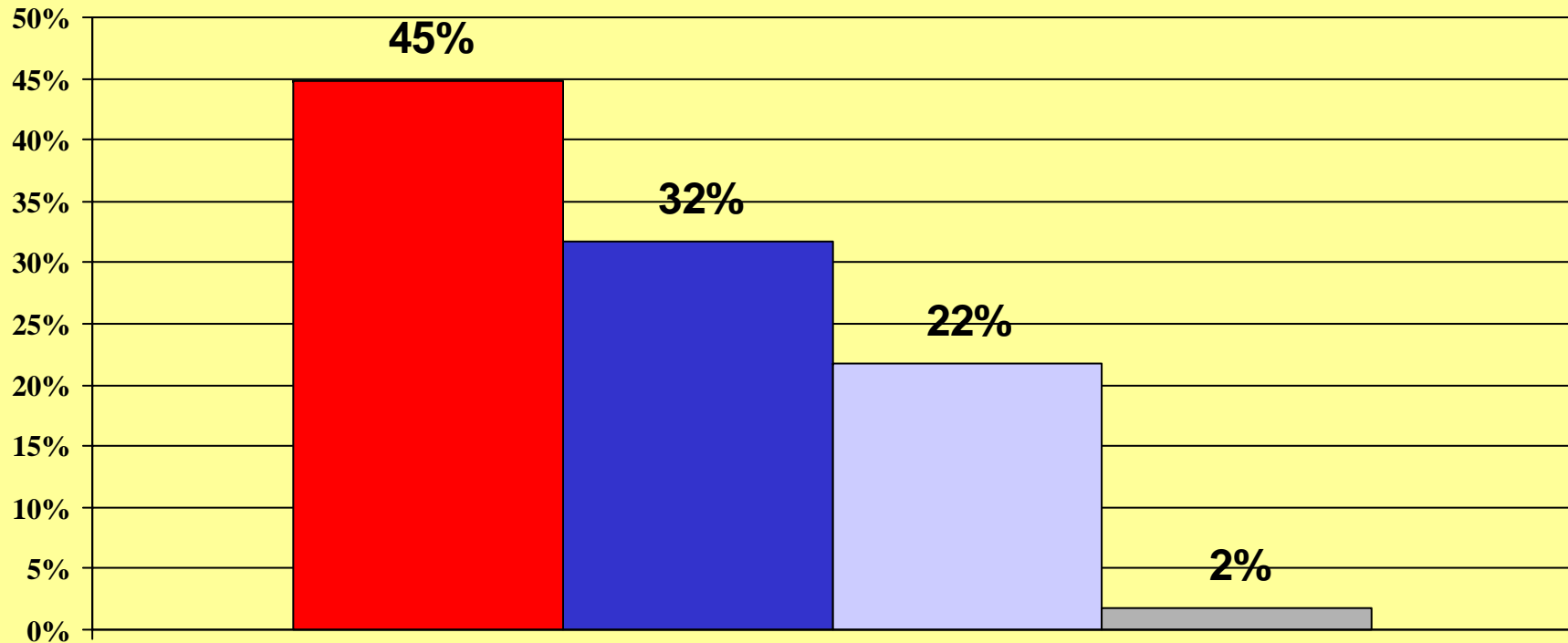


October 2007

Favorable Unfavorable No opinion Not aware

Tel Opinion Research, LLC

Opinion of Charlotte-Mecklenburg School System

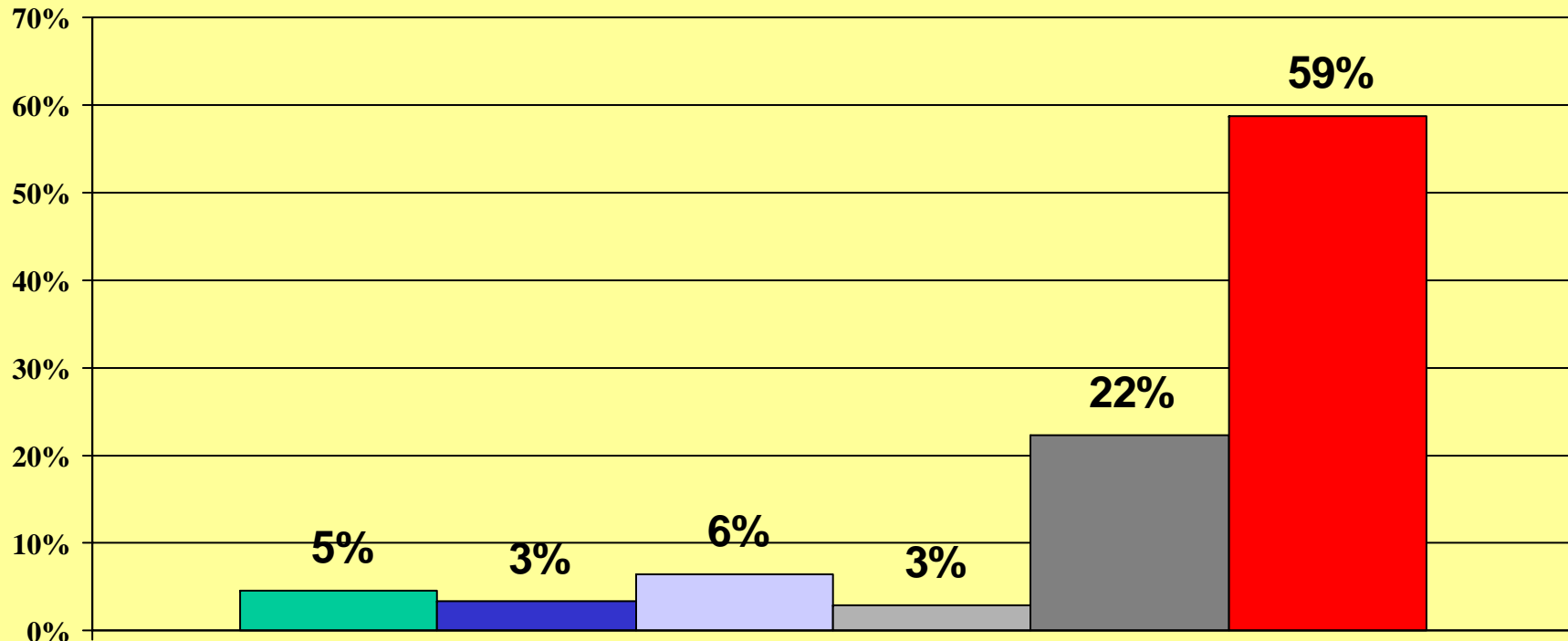


October 2007

■ Favorable ■ Unfavorable ■ No opinion ■ Not aware

Tel Opinion Research, LLC

When you think about the new light rail system, how often will you use it:

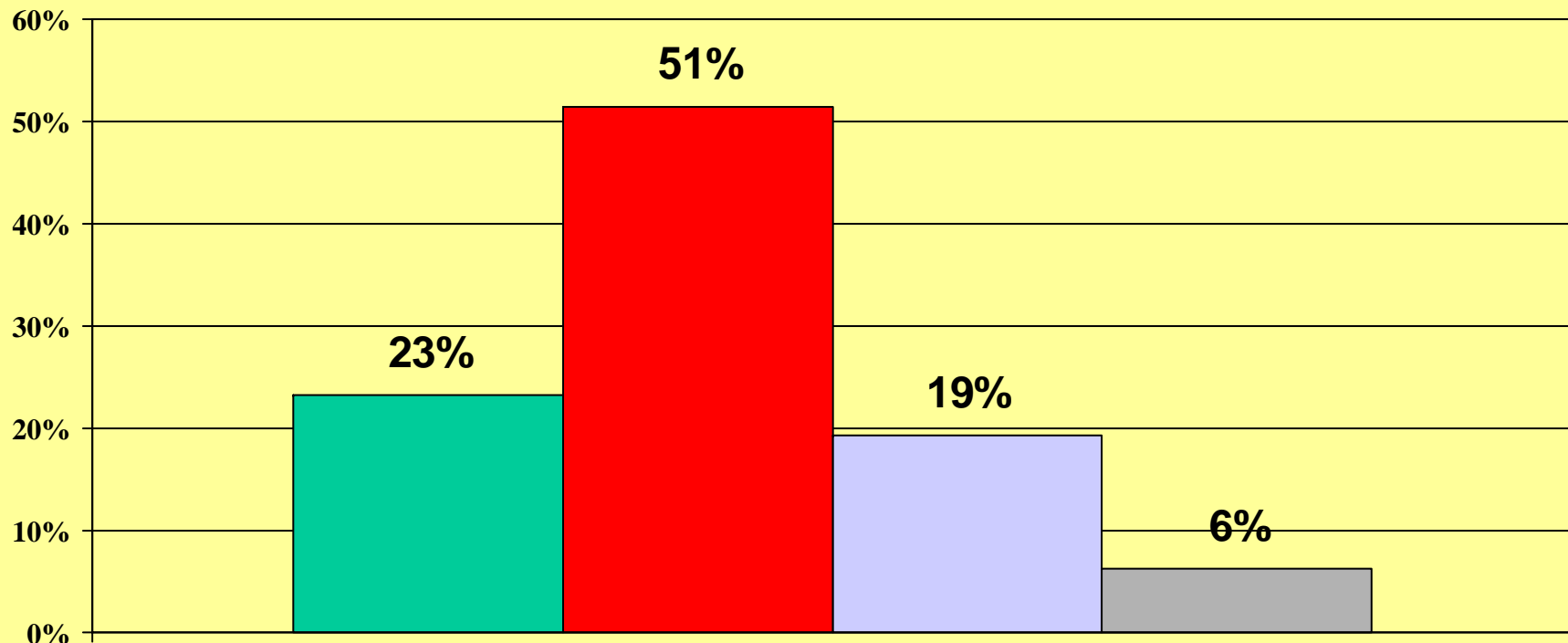


October 2007

More than once a week Weekly Couple of times a month Monthly Occasionally Not at all

Tel Opinion Research, LLC

Do you believe traffic congestion can best be dealt with by building a light-rail system or by building more roads and highways?

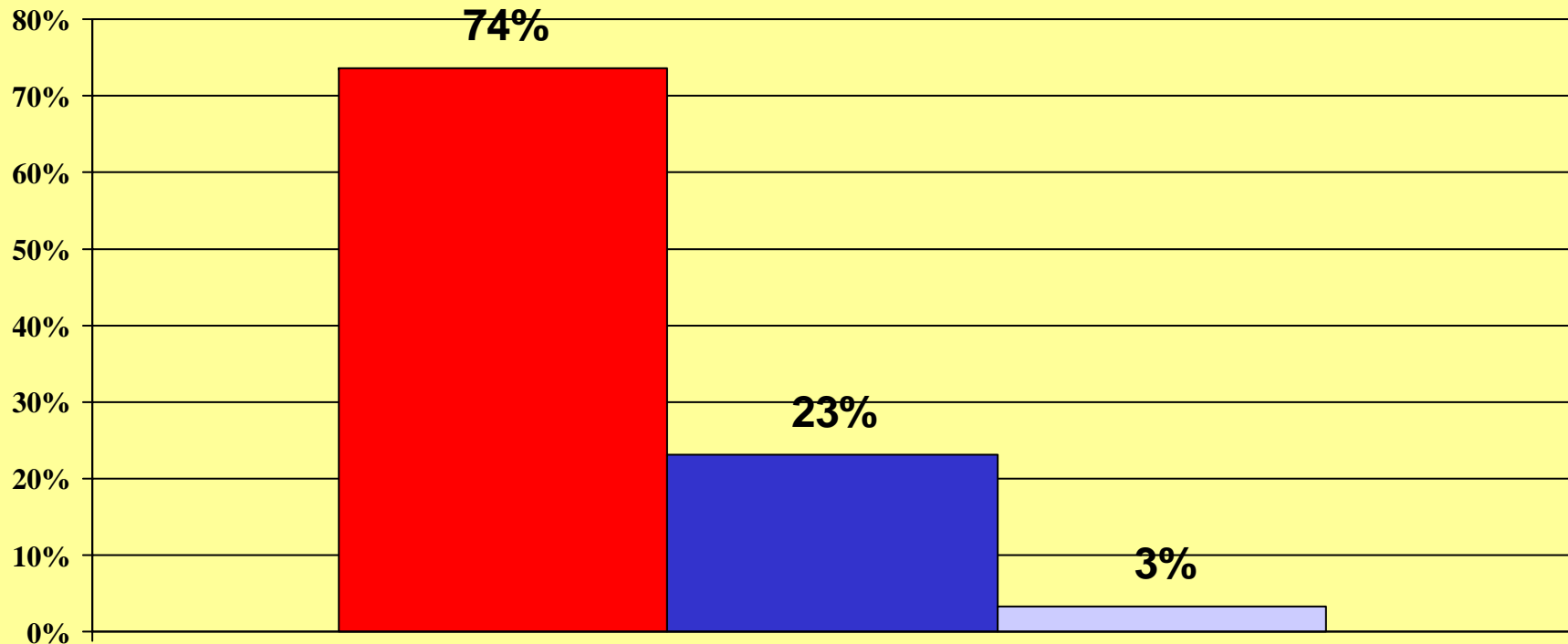


October 2007

■ Light rail ■ Roads and highways ■ Both ■ Not sure

Tel Opinion Research, LLC

Would you support the retention of the 1/2 cent sales tax increase if the revenue would be used to build roads and bridges?

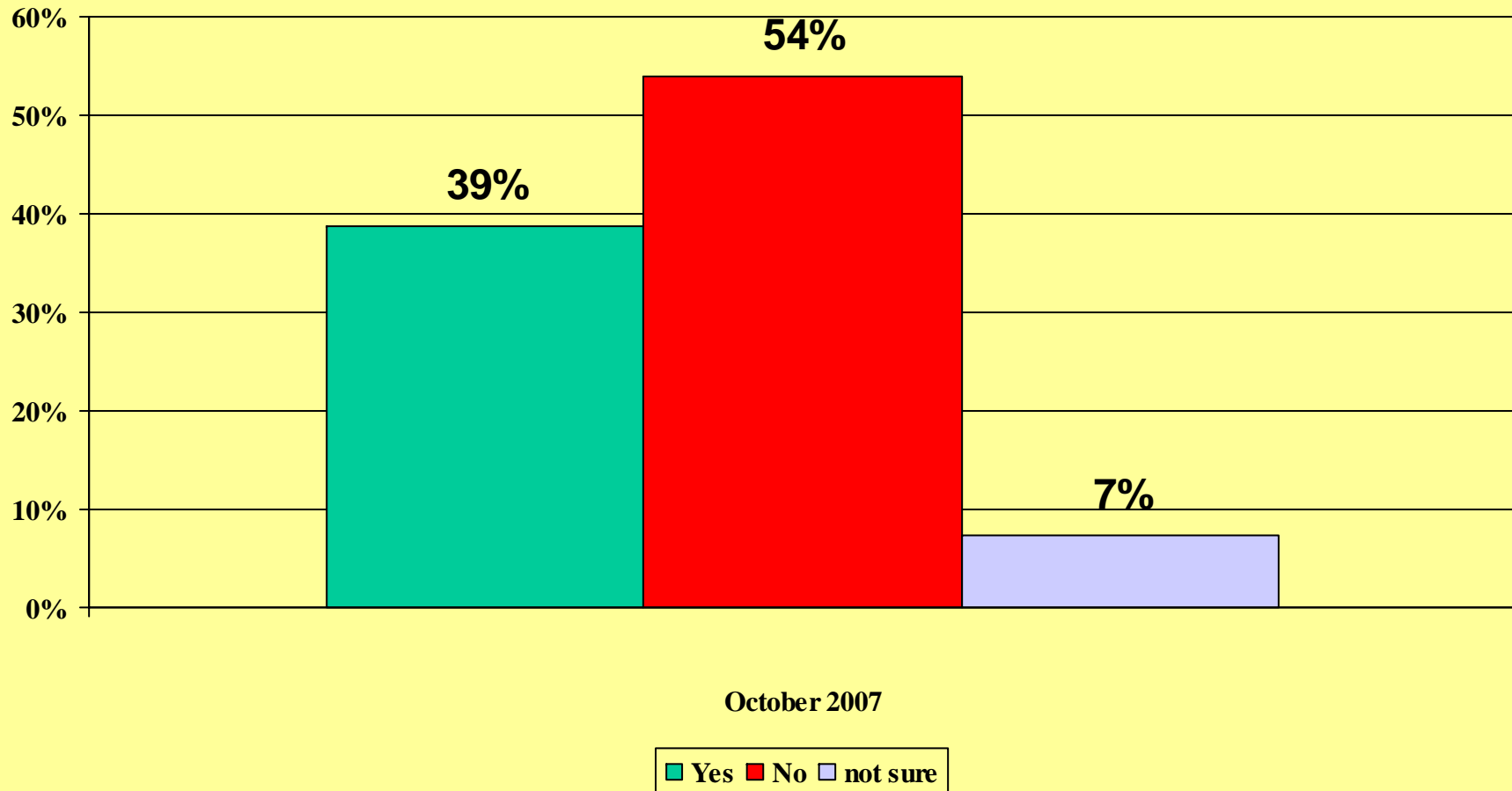


October 2007

■ Yes ■ No ■ Not sure

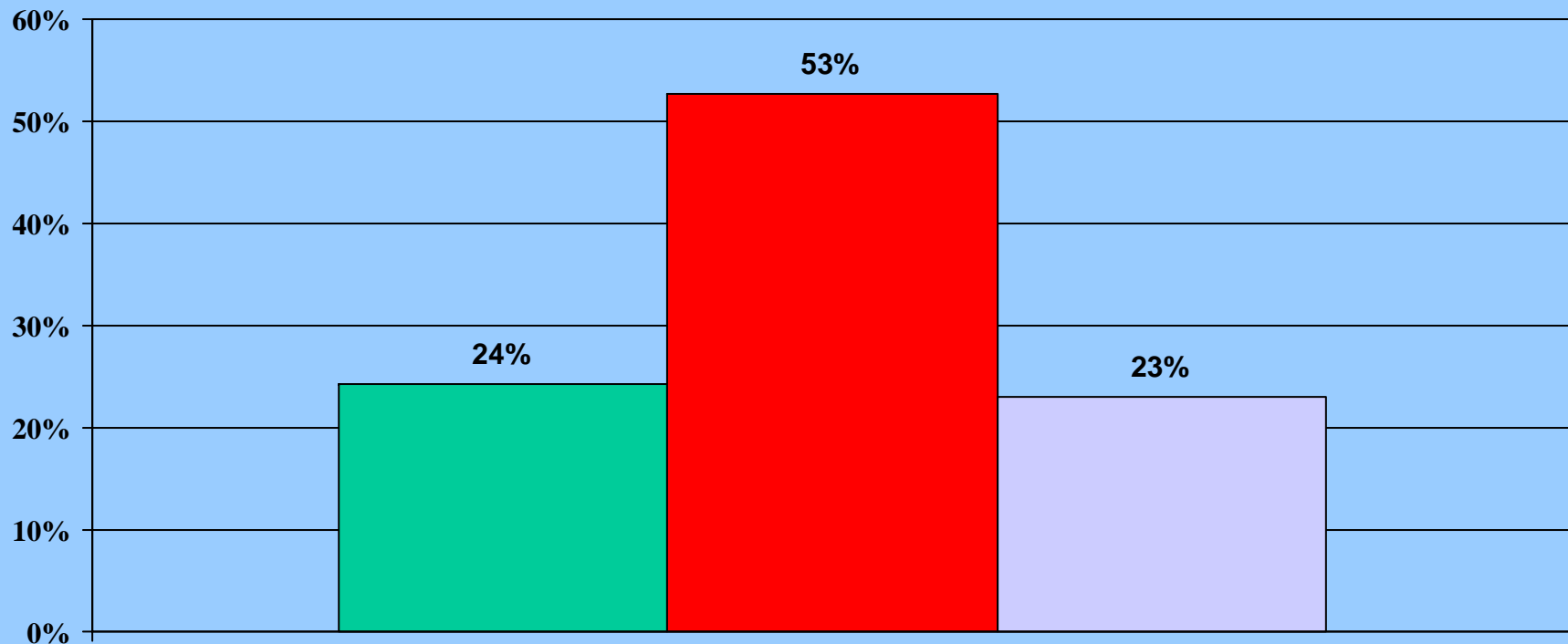
Tel Opinion Research, LLC

In 1999, voters in Mecklenburg County approved a 1/2 cent sales tax increase to support a light rail system and mass transit. Will you vote to repeal the 1/2 cent mass transit tax?



Tel Opinion Research, LLC

Statewide (September 2007): Would you support or oppose a referendum on the ballot in your county to increase the transfer tax to help pay for local services?

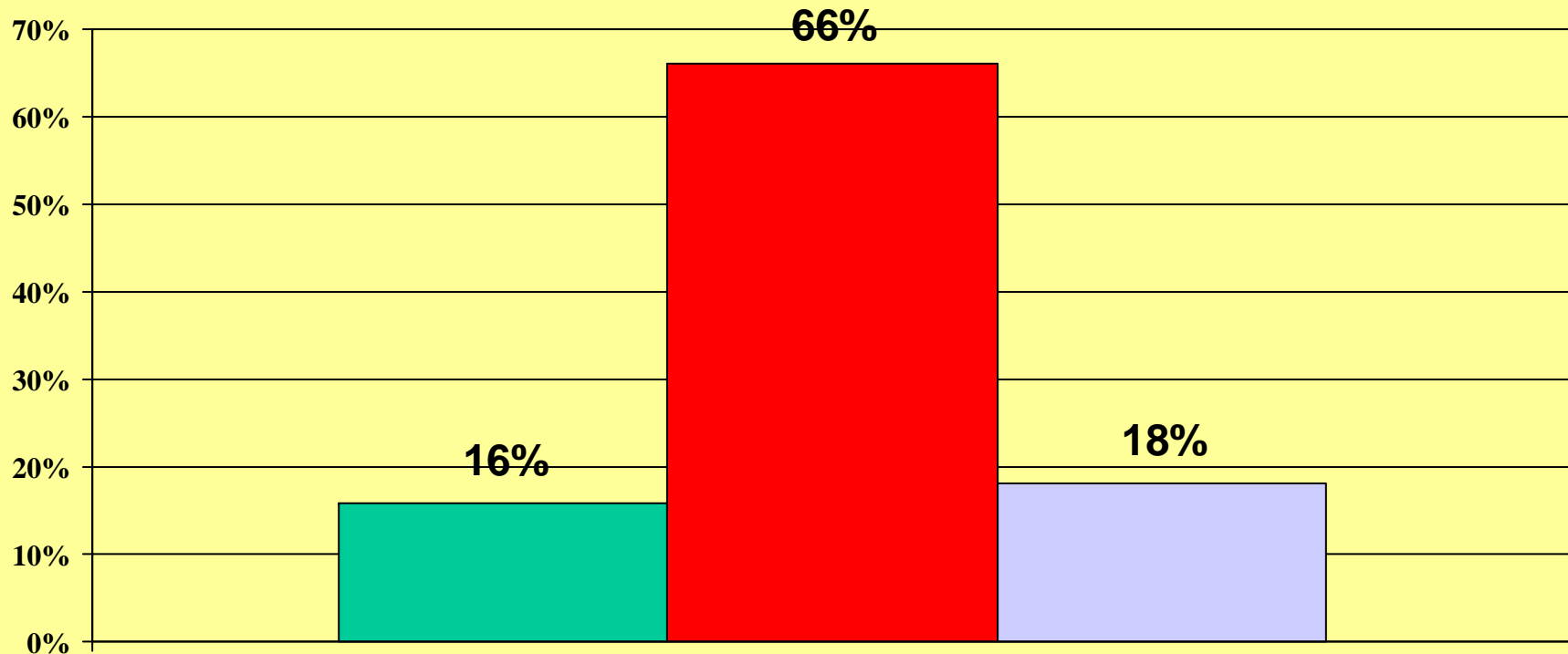


September 2007

Support Oppose Not sure

Tel Opinion Research, LLC

Would you support a real estate transfer tax in Mecklenburg County?

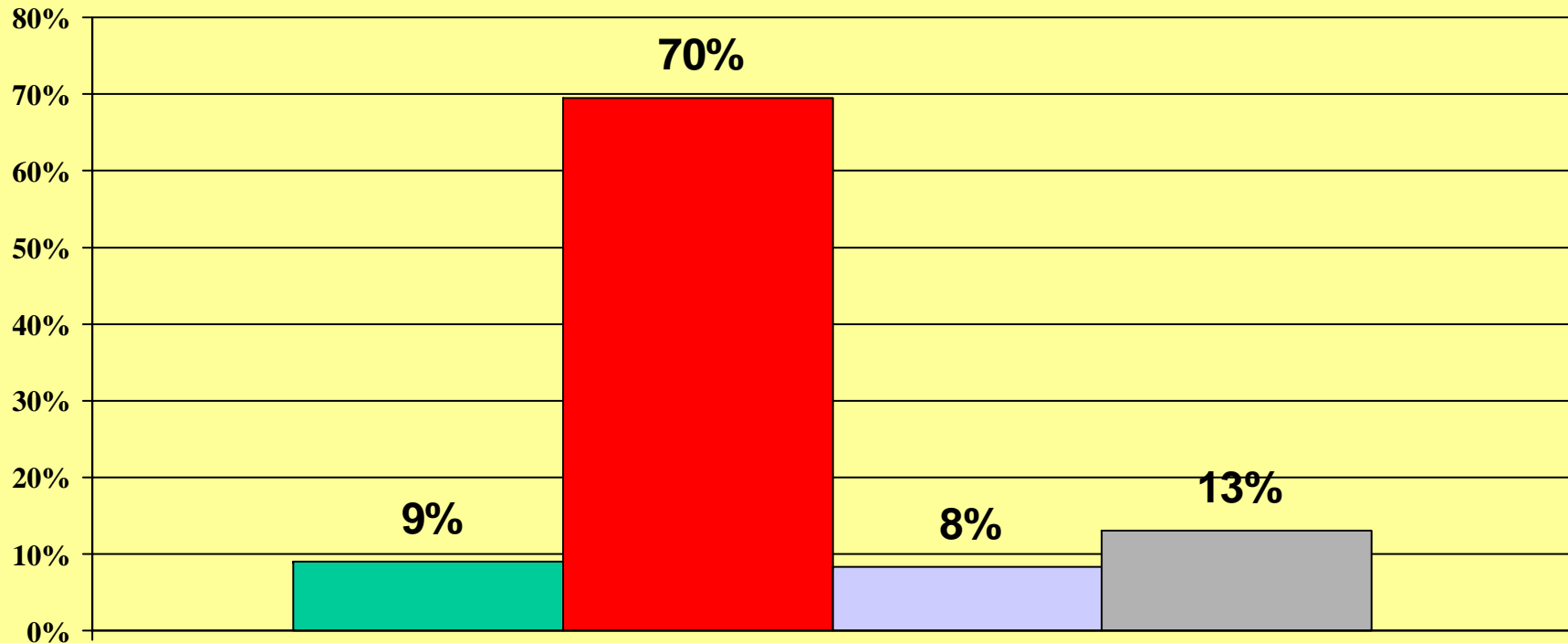


October 2007

Yes No not sure

Tel Opinion Research, LLC

Would you be more or less likely to vote for a County Commissioner who voted to put new taxes on the ballot?

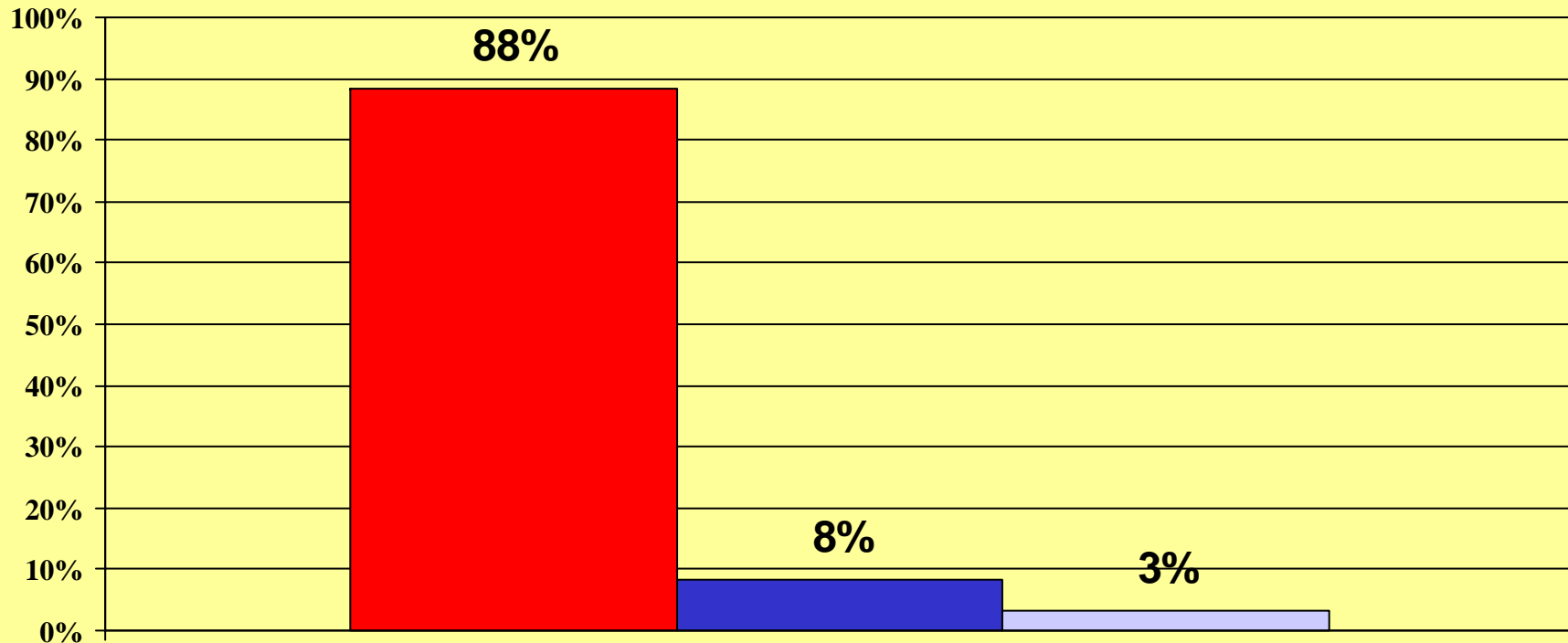


October 2007

More Less No difference Not sure

Tel Opinion Research, LLC

Do you support Mecklenburg's participation in a federal program that enables local law enforcement to work with federal immigration officials to deport criminal illegal immigrants?

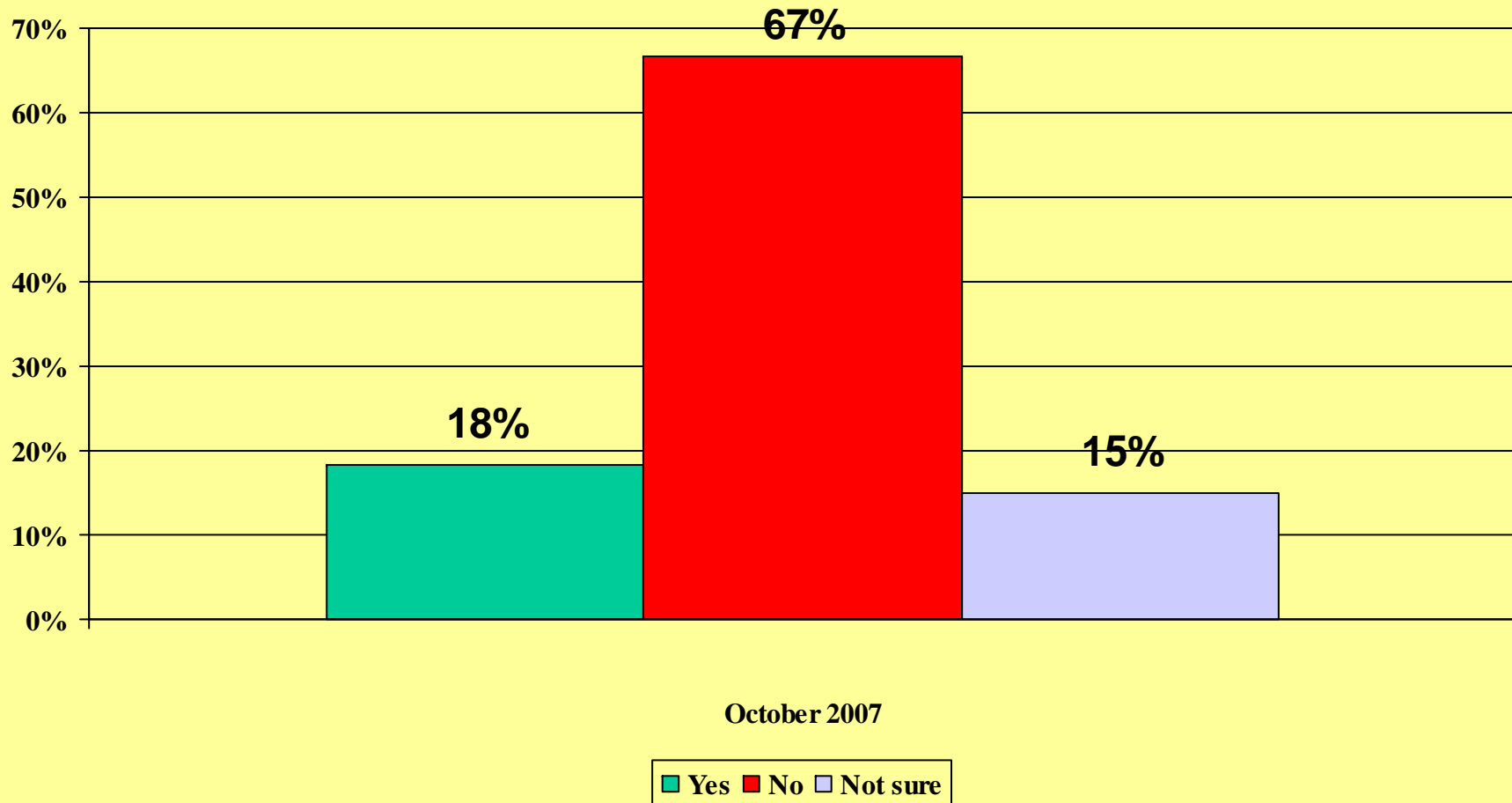


October 2007

Yes No Not sure

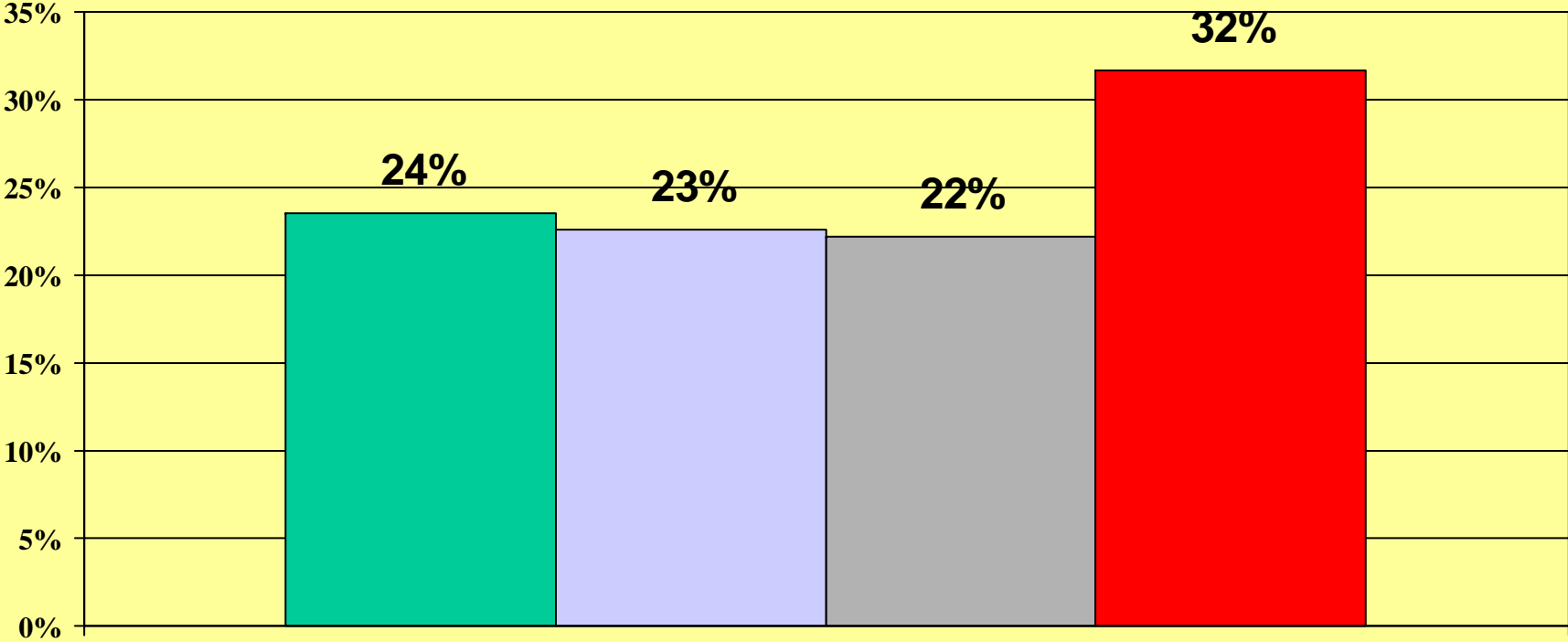
Tel Opinion Research, LLC

Before we ask a few final questions for the statistical profile of our survey, let me ask you if you think the Carolina Panthers will make the playoffs this year?

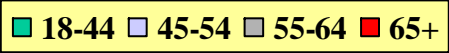


Tel Opinion Research, LLC

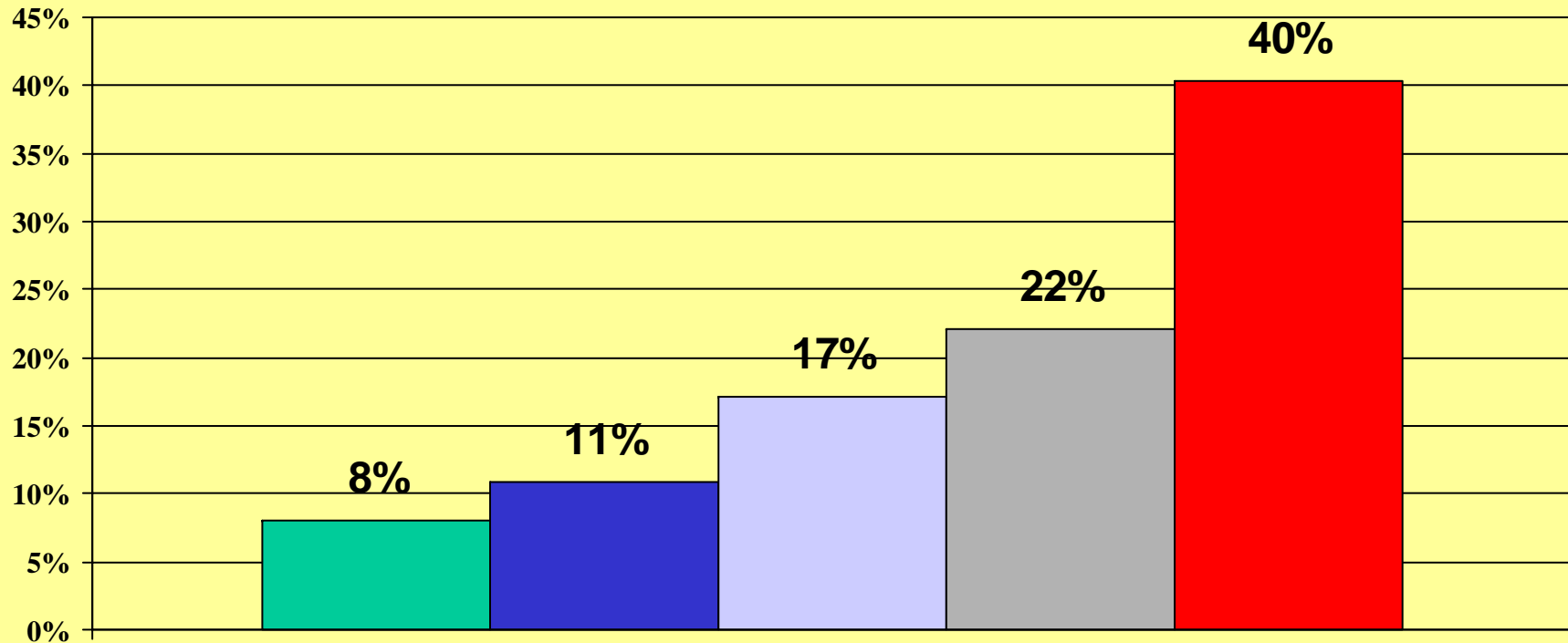
Age group



October 2007



Political Philosophy

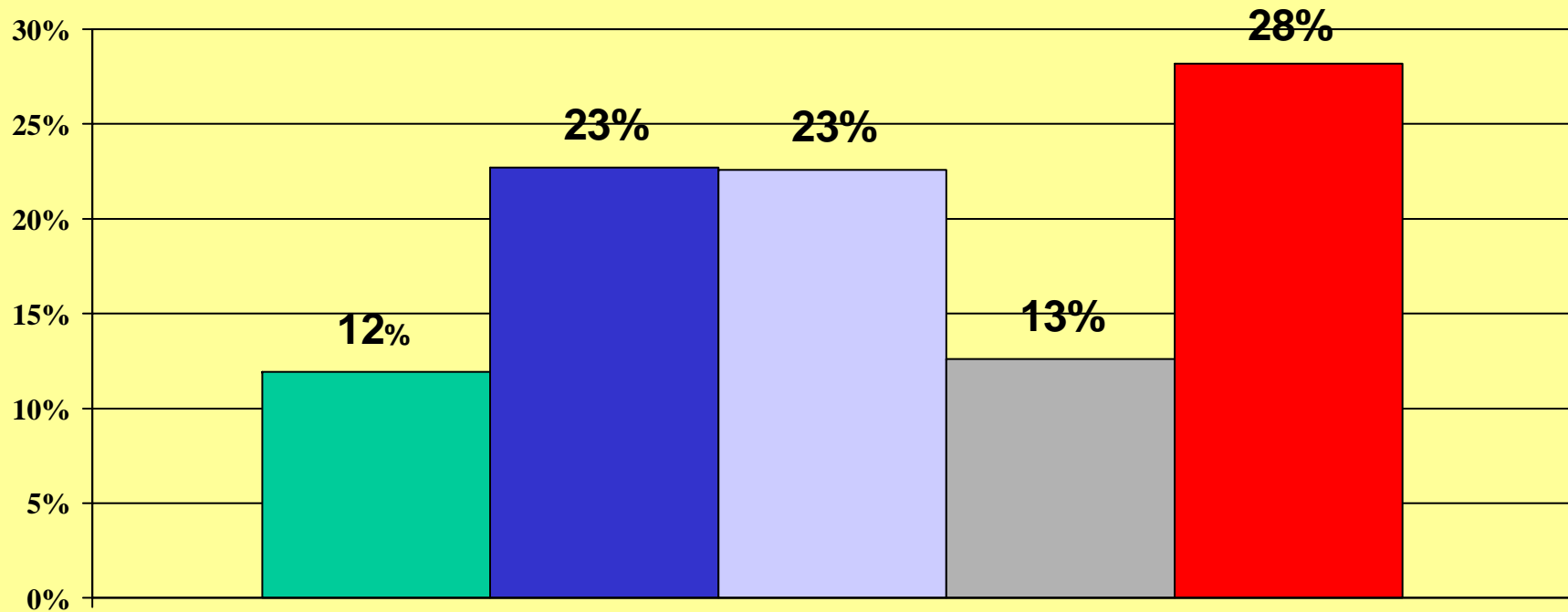


October 2007

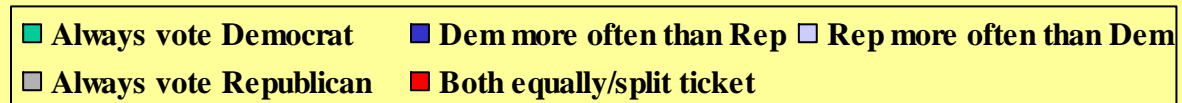
Very Liberal Somewhat Liberal Somewhat Conservative Very Conservative Moderate

Tel Opinion Research, LLC

How do you vote

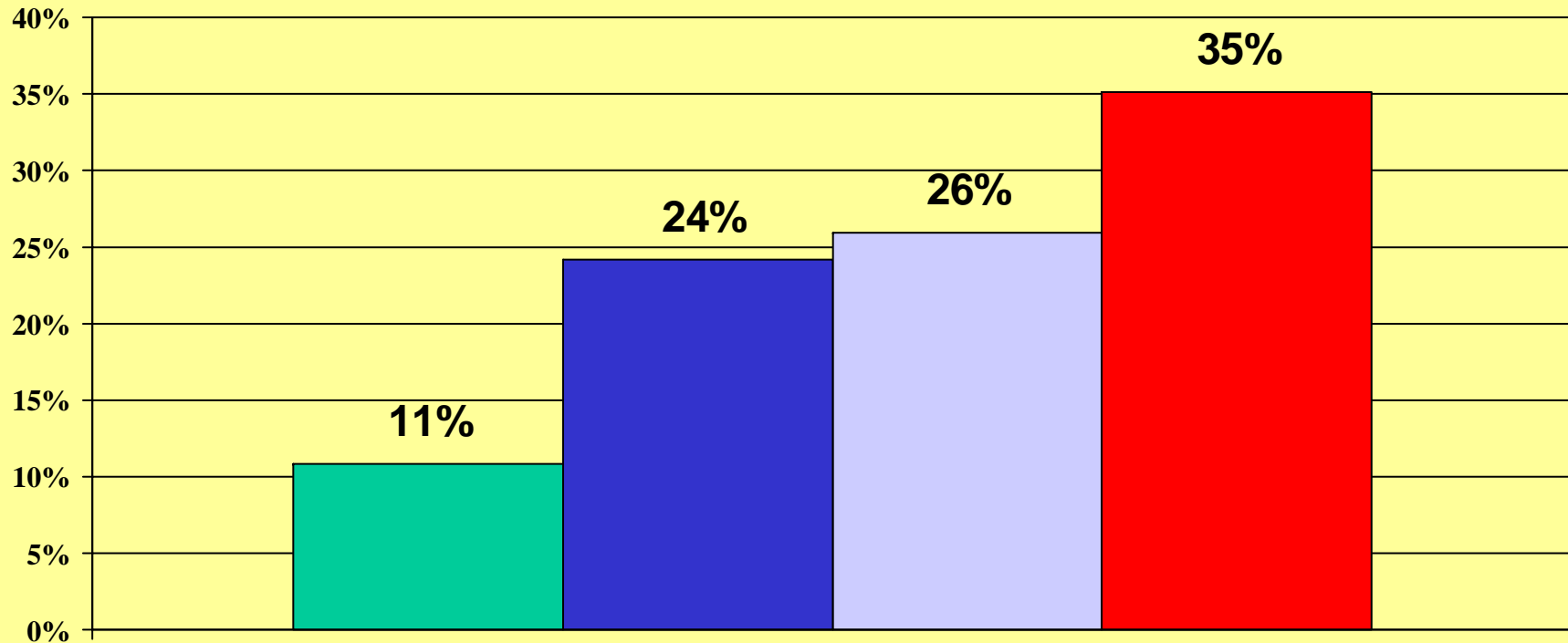


October 2007



Tel Opinion Research, LLC

Total family income

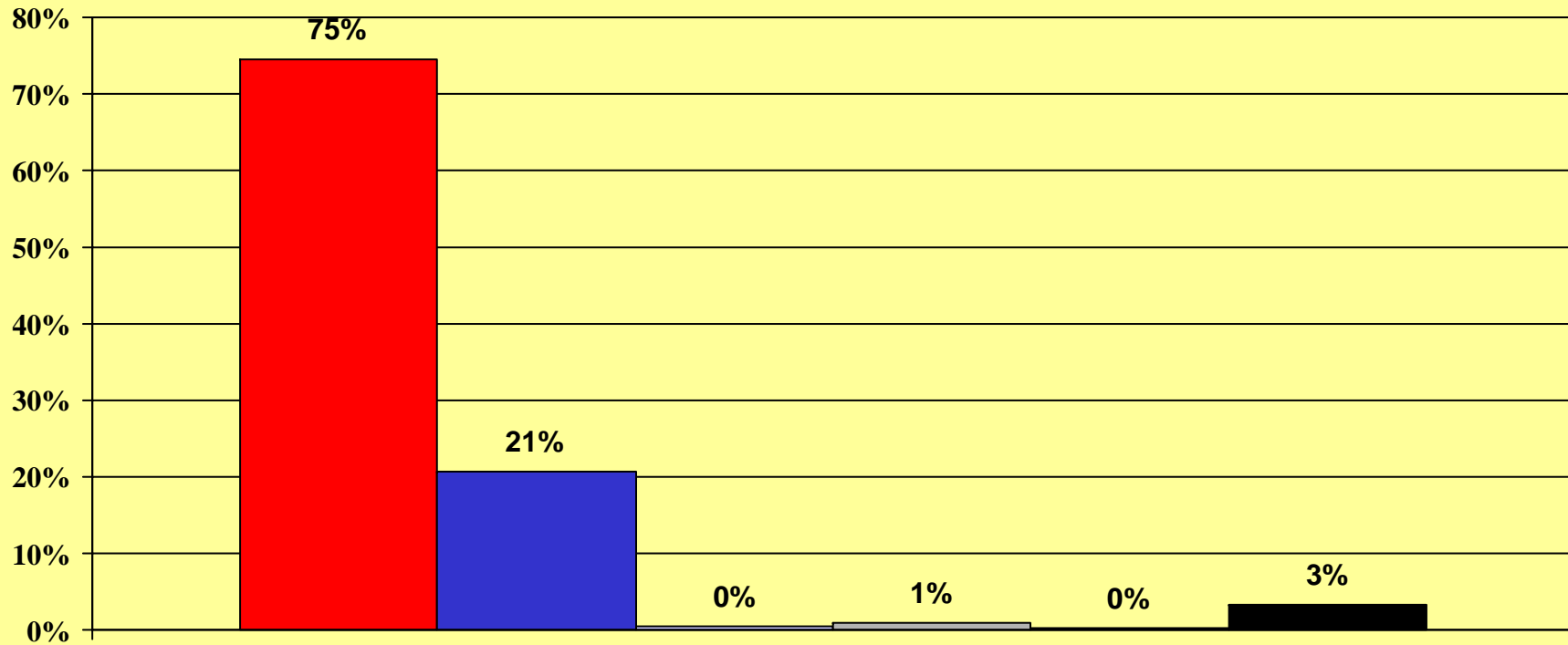


October 2007

■ Under \$25,000 ■ \$25,000-\$49,999 ■ \$50,000-\$74,999 ■ \$75,000 or more

Tel Opinion Research, LLC

Ethnic Heritage

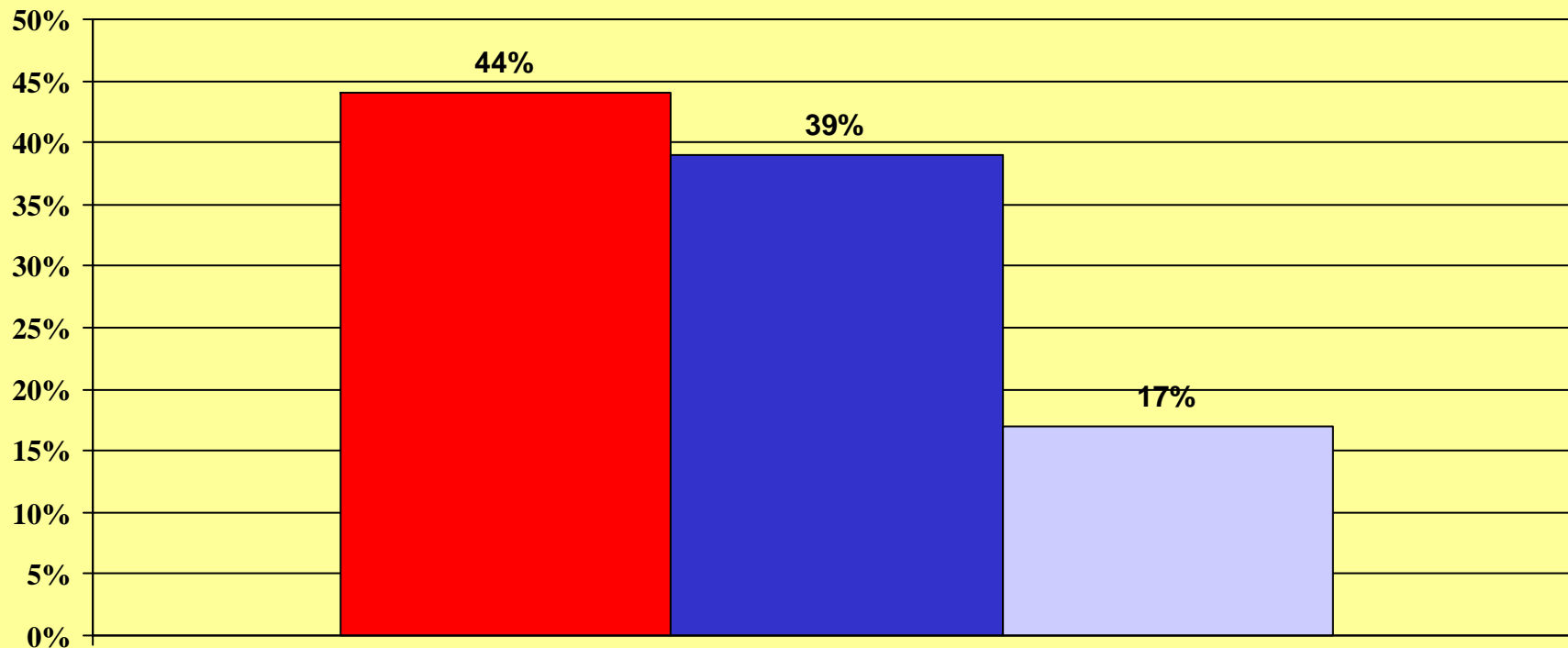


October 2007

■ Caucasian ■ African-American ■ hispanic ■ native american ■ asian ■ other

Tel Opinion Research, LLC

Affiliation

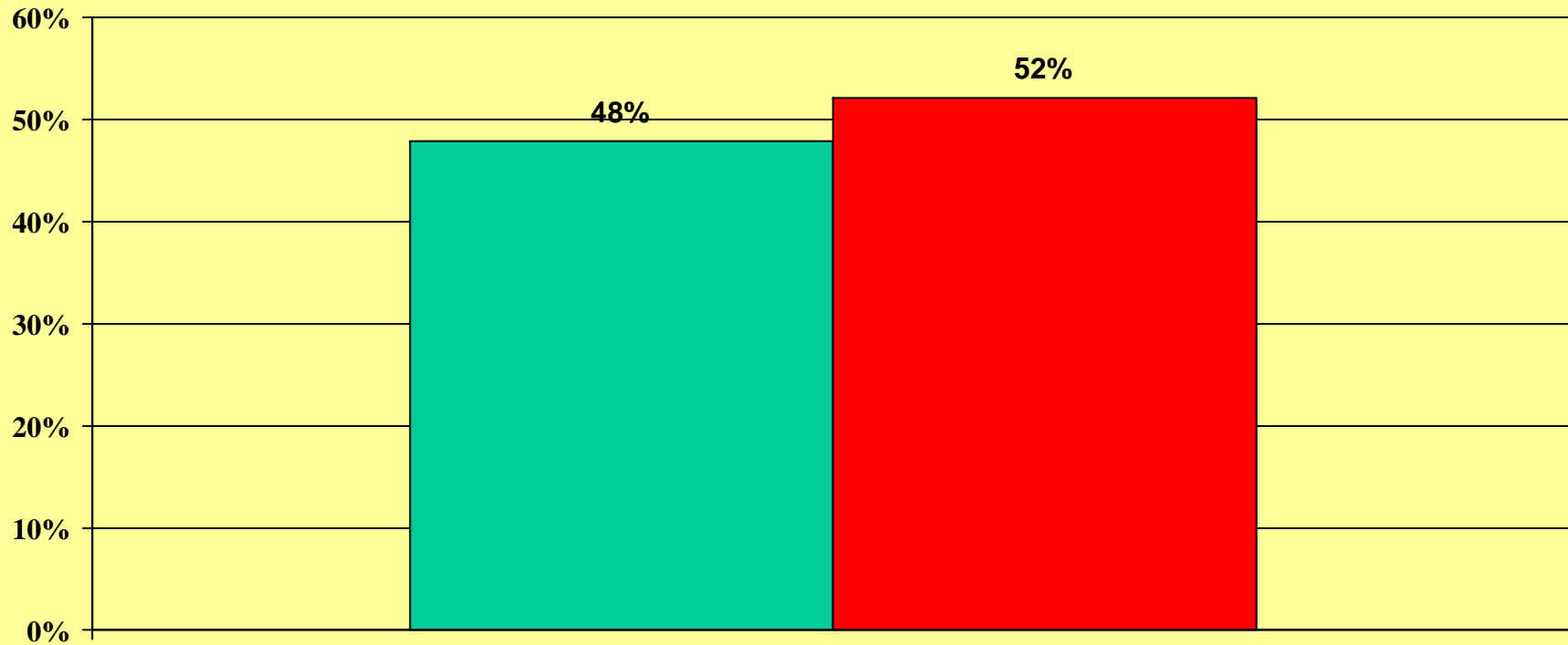


October 2007

■ Democrat ■ Republican ■ Other

Tel Opinion Research, LLC

Gender

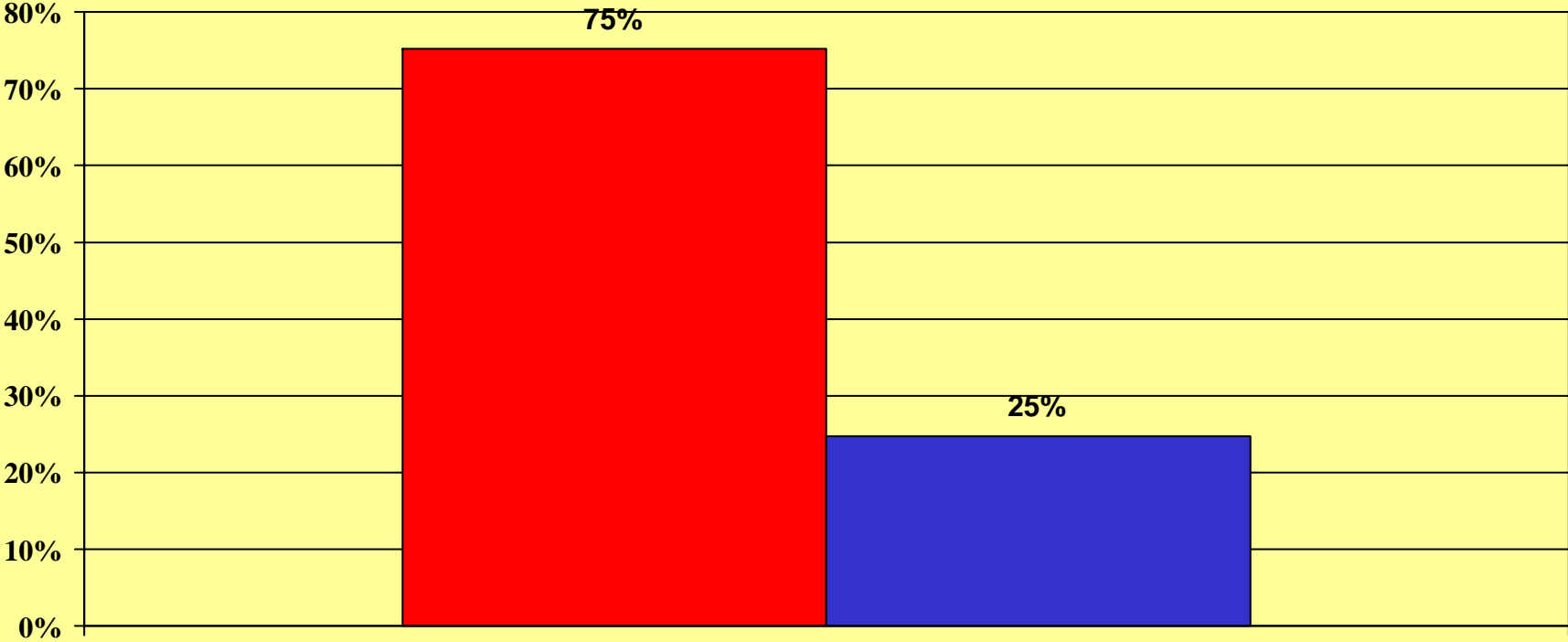


October 2007

Male Female

Tel Opinion Research, LLC

Geographic area



October 2007

■ City of Charlotte ■ Balance of County

Tel Opinion Research, LLC