

Parallels® Plesk Sitebuilder

What's New Document

Version 4.5

www.parallels.com

Version 1.0



Key Themes

Plesk Sitebuilder 4.5 is the latest version of Parallels's innovative website building software. Now, hosting service providers can place customized promotional content, such as their name, on each of their customer's websites. Additionally, service providers who use Plesk get the benefit of Single Sign On to Plesk Sitebuilder's capabilities – meaning they no longer need an additional user name and password to log in to the administrative console. Also, now you can migrate websites created in Parallels SiteStudio to Parallels Plesk Sitebuilder.

For End-users, this version comes with 4 new modules, File Download, Site Map, SitePal and External Page, along with several enhancements to existing modules. The File Download module allows users to upload pdf files, documents, spreadsheets, or other files on their websites and then make them available for download by their site visitors. The Site Map module allows site owners to display a clickable hierarchical model of their site structure to visitors aiding in ease of navigation within the site. The External Page module allows site owners to link menu items to external web sites. And finally, The SitePal module allows users to deploy speaking characters on their websites. With other enhancements to the Area Map, Image Gallery, Blog, eShop, and other modules, Plesk Sitebuilder 4.5 is more flexible and powerful than ever.

Major Features and Improvements

- 1. Promotional Footers** – Use a customizable text editor to create any message you desire to appear on your customers websites (i.e. "Powered by <insert hosting company name>"). Additionally, you can create multiple footers and tie them to different service plans and pricing. For example, you could charge a company a premium for having a "footer-free" website.
- 2. Single Sign On (SSO)** – As part of Parallels's OPEN FUSION initiative, Plesk Sitebuilder 4.5 has been further integrated with Plesk through Single Sign On. Users of Plesk can now access the Plesk Sitebuilder administrator console directly from the Plesk user interface with just a single user name and login. Plesk Sitebuilder 4.5 can also enable user authentication from other SSO-enabled applications.
- 3. Backup/Restore** – Backup and Restore your Plesk Sitebuilder data, from an individual user to an entire Plesk Sitebuilder server. You can perform the backup and restore capabilities via the web or a command line. Plesk Sitebuilder's backup/restore features are integrated with Plesk's backup and restore capabilities.
- 4. Custom Design Templates** – Create a custom template or page set designed specifically for your target market and make it available for your customers. If you have customers of both the Linux/Unix and Windows platforms, create one design template and make it available for all your customers.
- 5. Custom Help and Support Links** – Provide your customers with better support by customizing your help and support links.
- 6. New Supported Platforms:**
 - Fedora 8
 - Ubuntu 8.04
 - SuSE 10.3
 - Windows 2008 Server
- 7. Context Help Support** – Clicking the Help button now opens help topics related to the page a user is currently on.

8. **Order New License Key** – One click access to a page on the Parallels Web for purchasing the desired Parallels Plesk Sitebuilder license and support option.
9. **[UNIX] Customizing RSS channels list** - Customize a default list of channels in the RSS Reader module which enables site owners to add RSS feeds to their sites.
10. **[UNIX] Impersonating user accounts** - Log into Parallels Plesk Sitebuilder on behalf of your customers without logging out from your own account by clicking on the icon beside the desired user account.
11. **Migration from Parallels SiteStudio** - Migrate web sites created in Parallels SiteStudio (integrated with Parallels H-Sphere starting from version 3.2) to Parallels Plesk Sitebuilder.

Major Features for End-Users:

1. **File Download Module** – Create a place on your website to make files available for download to your site visitors. You'll be able to upload any type of file, such as a pdf file, Word document, Excel spreadsheet, or zip file, and choose whether or not the file should be opened in a browser. Then your site visitors can go to the designated place on your website and choose to open or save the file after download.
2. **Google Maps** – Provide your site visitors with an interactive map through our Area Map module which now uses Google Maps technology. Provide a map with your business or other locations indicated with a red mark. Site visitors can then click on the map and scroll to see the surrounding area or they can get directions to and from your location by specifying an address.
3. **Multiple Image Uploader for Image Gallery** – Upload an entire gallery worth of photos onto your website with our Image Gallery module. With the ability to upload unlimited images at once, you can build the website of your choice even quicker than before.
4. **One-Click Publishing** – Publishing a site with Plesk Sitebuilder 4.5 has become more clear and interactive. Now on the Publish step of our 5 step wizard, you will see explanatory text, including whether or not the site has been published and details of the last publication.
5. **Add Images to Blog Postings** – Enhance your blog entries with visuals by adding images to them. Our Blog module now includes the ability to upload images with your blog postings.
6. **SitePal Module** – SitePal is innovative avatar software developed by Oddcast. It allows users to deploy speaking animated characters on their web sites that can welcome visitors and guide them around the site. And now the functionality is available directly as a new "SitePal" module from within the Parallels Plesk Sitebuilder wizard.
7. **Fotolia Integration** – Fotolia is an online marketplace for royalty free stock images, allowing individuals and professionals to legally buy and share stock images and illustrations. With this release, Parallels Plesk Sitebuilder users get direct access to the Fotolia gallery and can browse and buy images without leaving the Parallels Plesk Sitebuilder wizard.
8. **Cropping images** – Parallels Plesk Sitebuilder now has a built-in tool allowing you to "crop" unwanted areas from images.

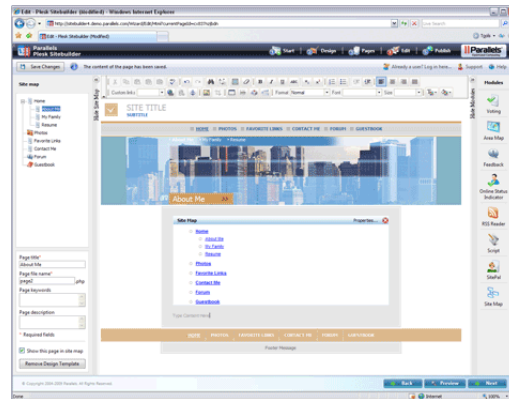
9. eShop Module Enhancements:

- **WorldPay Integration** – Give visitors another payment system option for e-shops.
 - **Custom Payment Systems** – Integrate a payment system of your choice via the Parallels Plesk Sitebuilder Admin panel.
 - **Specified Terms of Service** - Clarify rights and responsibilities for seller and buyer by including customized terms of service (displayed to the customers on the checkout page).
 - **Nested Product categories** – Create a multi-level hierarchy of product categories for flexible and convenient catalog navigation.
 - **Catalog RSS feed** – Allow site visitors can to subscribe to RSS feeds which enables them to browse product offerings and check for updates on a regular basis.
 - **Adding colors and options for e-shop products** - Specify color, size, material or other options for each product.
 - **Catalog layout management** - Organize items in catalogs to your specifications.
- 10. New modules: Site Map and External Page.** The Site Map module allows site owners to display a clickable hierarchical model of their site structure to visitors aiding in ease of navigation within the site. The External Page module allows site owners to link menu items to external web sites.
- 11. Removing design template from pages** - Site owners can now remove design template's layout and graphics from selected pages increasing the amount of customization available.
- 12. Save button** - Site owners now have an easy access button to save their in-progress changes while building their website.
- 13. Counter and site visitor management settings are moved to the Wizard** - Site owners can save time by enabling a counter on their site or managing their registered visitors directly from the Wizard rather than going to the Administrator Panel.
- 14. CAPTCHA** -To prevent automated spam on sites, anonymous users will be required to enter a confirmation code to be able to register with a site or to post in a blog, forum, or guestbook.

Selected Screenshots

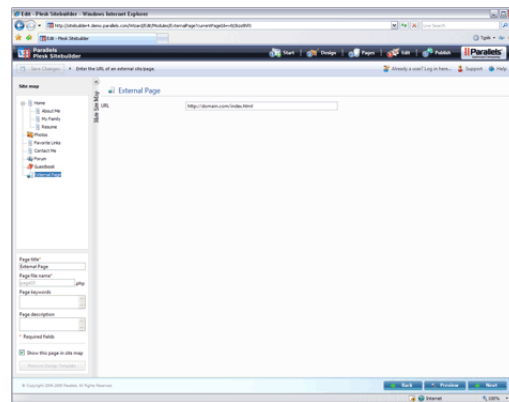
SITEMAP MODULE

Create a visual representation of your site's structure to ease navigation for your website visitors.



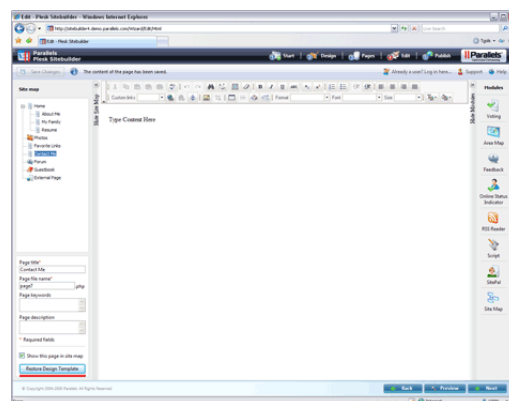
EXTERNAL PAGE MODULE

Provide a URL that will link to menu items giving you the flexibility of having your site navigate quickly to an external websites.



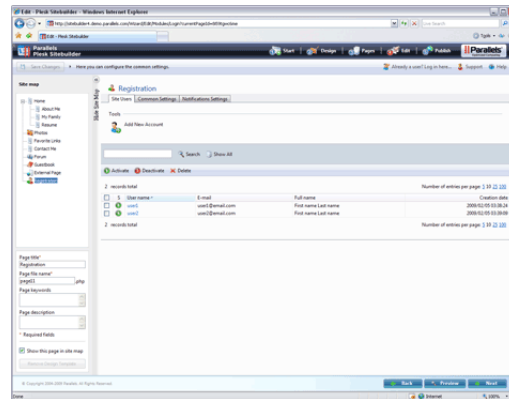
REMOVING DESIGN TEMPLATE LAYOUTS AND GRAPHICS

Simplify particular pages on your site by removing design template's layout and graphics.



USER MANAGEMENT MOVED TO THE WIZARD

Manage site visitors' accounts directly through the Wizard interface.



COUNTER SETTINGS MOVED TO THE WIZARD

Adding visitors counter to your site is now available directly through the Wizard interface.

