



Subscribe to Caron Connections, our free eNewsletter

Enter your e-mail address

[subscribe](#)

*The Yarn. The Web. The Experience.*

[Home](#)

[Yarns](#)

[Pattern Boutique](#)

[Gallery](#)

[Guide to Style](#)

[Cari's Blog](#)

[Where to Buy](#)

# Juno Toddler Dress

designed by  
Kelly Klem



Technique used: Knit



YARN

**Naturally Caron.com Country**

75% Microdenier Acrylic, 25% Merino Wool: 9 (11, 13) oz

**Shown in:** #0001 Rose Bisque

One pair size US 8 (5 mm) needles or size to obtain gauge

One circular size US 8 (5 mm) needle, 16"/40 cm long for neck (or double pointed needles, if preferred)

Cable needle (cn)

Stitch markers

Stitch holders

Yarn needle

Seed beads

Sequins

Beading needle

Sewing needle and matching thread

Row counter (optional)



[Click for audio fashion show](#)



[click to enlarge](#)

[schematics & charts](#)

[Printer Friendly instructions](#)

## SIZES

Small (Medium, Large)

To fit Toddler 9 – 12 (18, 24) months

## FINISHED MEASUREMENTS

Chest 21 (22 1/2, 24)"/53 (57, 61) cm

Length 16 1/4 (18, 19 1/2)"/41.5 (46, 49) cm

## GAUGE

In Seed Stitch, 18 sts and 28 rows = 4"/10cm

## ABBREVIATIONS

**k1-f/b/f (increase 2):** Knit next st through the front loop, do not drop st from left-hand needle, knit same st through the back loop, then through the front loop again, drop original st from left-hand needle.

**Tw2L (Twist 2 left):** Slip next 2 sts, one at a time *knitwise* to right-hand needle, return sts to left-hand needle in turned position; knit second st through the back loop (-tbl), do not drop from left-hand needle, k2tog-tbl, drop both sts from left-hand needle.

**Tw2R (Twist 2 right):** K2tog through the front loops, do not drop sts from left-hand needle; knit first st again, drop both sts from left-hand needle.

**wyib (with yarn in back):** Hold yarn to back of work as it faces you – on RS this is the knit position.

**wyif (with yarn in front):** Hold yarn to front of work as it faces you – on RS this is the purl position.

**yo (yarn over):** With yarn in back (knit position), bring it to the front *between* the needles, (purl position), then carry it *over* the needle, ready to work the next stitch.

#### SPECIAL TECHNIQUES

**C3F-Tw2L:** Slip 2 sts to cn, hold to front, p1, Tw2L from cn.

**C3B-Tw2R:** Slip 1 st to cn, hold to back, Tw2R, p1 from cn.

**C3B-Tw2L:** Slip 1 st to cn, hold to back, Tw2L, p1 from cn.

**C4F-Tw2R/Tw2L:** Slip 2 sts to cn, hold to front, Tw2R, Tw2L from cn.

**C4F-Tw2L/Tw2L:** Slip 2 sts to cn, hold to front, Tw2L, Tw2L from cn.

#### Short Row Shaping

Work the number of sts indicated in the instructions, wrp-t; return to starting point.

Continue to work progressively longer or shorter rows as indicated in the instructions; work wraps together with wrapped sts as you come to them, as follows: Insert right-hand needle into wrap at base of wrapped st from beneath, then bring right-hand needle up and into st on left-hand needle ready to work the st; work wrap and st together—this prevents a hole from forming where Short Row ended.

**Hint:** If it's difficult to work wrap and st together as given above, slip wrapped st to right-hand needle, insert left-hand needle into wrap (from bottom to top), place wrap on left-hand needle, return wrapped st to left-hand needle and work wrap and st together.

#### Wrap and Turn (wrp-t)

**(RS)** Yarn forward (to the purl position), slip next st to right-hand needle, yarn back (to the knit position), return slipped st, (which is now wrapped), to left-hand needle; turn, leaving remaining sts unworked.

**(WS)** With yarn in front (purl position), slip next st, yarn back (to the knit position), return slipped st, (which is now wrapped), to left-hand needle; turn, leaving remaining sts unworked.

#### Flower

##### Notes:

Flower is worked similar to a Bobble (using short-rows), then tacked down in the finishing process with beadwork.

Slip all sts purlwise wyib.

Loosely cast on 4 sts, turn.

**Row 1:** K1-f/b/f in each st across, turn—12 sts.

**Row 2:** \* Slip 1, [k1, yo, pass knit st over] twice; repeat from \* 3 times, turn.

**Row 3:** [K1, yo, pass knit st over] twice, pass second st on right-hand needle over first st—1 st remains (first petal of flower completed); slip 1, pssso, \* [k1, yo, pass knit st over, then pass second st on Right-hand needle over first st], twice, slip 1, pssso; repeat from \* 2 times, slip 1, pssso, turn—1 st remains (4 petals).

**Row 4:** Slip remaining st to right-hand needle; keeping working yarn in back of flower, pick up 1 st in cast-on st at loose end, pssso—1 st remains.

#### STITCHES USED

##### 2 x 2 Rib – Back (multiple of 4 sts + 2)

**Row 1:** P2, \* k2, p2; repeat from \* across.

**Row 2:** Knit the knit sts and purl the purl sts as they face you.

Repeat Row 2 for 2 x 2 rib.

##### 2 x 2 Rib – Front (multiple of 4 sts + 2)

**Row 1:** K2, \* p2, k2; repeat from \* across.

**Row 2:** Knit the knit sts and purl the purl sts as they face you.

Repeat Row 2 for 2 x 2 rib.

**Seed Stitch (multiple of 2 sts, if an even number of sts; 2 sts + 1, if an odd number of sts)** – also see Chart

**Row 1:** \*K1, p1; repeat from \* across, end k1 if an odd number of sts.

**Row 2:** Knit the purl sts and purl the knit sts as they face you.

Repeat Row 2 for Seed st.

**Cables, Side Panels and Sleeves** – see [Charts](#)

#### NOTES

Back and Front are worked alike, except for Side Panels, until Front neck shaping begins.

Collar is shaped with Short-rows.

Optional: Place shoulder sts on holders and join with Kitchener st.

Cables with twisted sts are an innovation by the designer; think of them as 3-st Cables with the facing sts worked as Tw2R or Tw2L, and as 4-st Cables, with each 2-st section of the Cable worked as Tw2R or Tw2L – they may sound complicated, but are not difficult to work if thought of in this way.

#### HELPFUL

Place markers between Stitch patterns.

#### BACK

Cast on 58 (62, 66) sts.

**(RS)** Begin 2 x 2 rib; work even for 10 (12, 14) rows, end with a WS row.

**Establish Pattern:** Begin Row 1 of all St patts from Charts, **except** as noted for Center Panel:

**(RS)** Work 4 (5, 6) sts in Seed st, pm; C4F Cable across 4 sts, pm; Back Side Panel across 8 sts, pm; C4B Cable across 4 sts, pm; p2 (3, 4), k1, pm; beginning Row 9 (1, 9) of Chart, work Center Cable Panel across center 12 sts, pm; k1, p2 (3, 4), pm; work C4F Cable across 4 sts, pm; Back Side Panel across 8 sts, pm; C4B Cable across 4, sts, pm; 4 (5, 6) sts in Seed st.

Continue as established – work Row 2 of Seed st, then repeat Row 2 for remainder of piece; work Rows 2 – 4 from C4B Cable, C4F Cable and Back Side Panel Charts, then repeat Rows 1 – 4 for remainder of piece; work Rows 10 – 12 (2 – 12, 10 – 12) once from Center Panel Chart, then repeat Rows 1 – 12 for remainder of piece. Work even until piece measures 10 3/4 (12, 13)" from beg, end with (WS) Row 12 of Center Cable Panel—74 (84, 90) rows, including ribbing.

#### Shape Armhole

**(RS)** Dec 1 st each side every other row twice—54 (58, 62) sts remain.

Work even in patt until armhole measures 5 1/2 (6, 6 1/2)" from beg of shaping, end with a WS row.

Bind off all sts loosely in pattern. Place markers each side of center 18 sts for Back neck.

#### FRONT

Work 2 x 2 rib as for Back, end with a WS row.

**Establish Pattern:** Work as for Back, working Front Side Panel instead of Back Side Panel at each side.

Continue as for Back to beg of armhole—10 3/4 (12, 13)" from beg, end with (WS) Row 12 of Center Cable Panel—74 (84, 90) rows, including ribbing.

#### Shape Armhole

Work armhole as for Back—54 (58, 62) sts remain.

Work even until a total of 10 rows have been completed from beginning of armhole, ending with (WS) Row 10 of Center Cable Panel; pm between center 2 sts of last row—27 (29, 31) sts each side of marker.

#### Shape Neck

**Establish Pattern: (RS) Left Front:** Work across to Center Cable Panel; dec 1 st, work 4 sts in patt (ending at marker);

**Right Front:** Join a second ball of yarn, work 4 sts in patt, dec 1 st, work to end in patt.

**(WS)** Working both sides at same time, work 1 row even.

Continue as established, working 4 sts each side of center Front (for neck edging) on RS rows as follows: [Tw2R, p2] on left Front; [p2, Tw2L] on right Front; and AT THE SAME TIME, dec 1 st each side (before left Front neck edging and after right Front neck edging) every other row 9 times—18 (20, 22) sts remain each side for shoulders.

Work even until armhole measures same as Back to shoulder.

Bind off all sts loosely in patt.

#### Flowers

Tack down Flowers on Front using sewing needle and matching thread.

**Embellishment:** Using beading needle and thread, secure knot on WS behind Flower; \* bring needle to RS, place a sequin and bead on needle, pull needle through, insert needle through sequin again and through flower to WS; repeat from

\* 3 times.

Fasten off.

Repeat for each Flower - 4 sequin/beads on each flower.

### SLEEVES

Cast on 44 (48, 52) sts.

Work 8 (10, 12) rows of 2 x 2 rib.

#### Establish Pattern – all sizes

**Row 1 (RS) of Chart:** Work 1 (2, 3) sts in Seed st – this is Seed st section indicated on Chart (4 sts will be inc'd in this section while shaping Sleeve – all sizes), pm; [k4, p1] twice, k4 – Cable section shown on Chart, immediately after Seed st section (2 sts will be inc'd), pm; p1 (2, 3) – (1 st will be inc'd), pm; k1, [p2, Tw2L] twice, p2, k1 across center 12 sts (2 sts will be inc'd on Row 2, then center section is worked even), pm; p1 (2, 3) – (1 st will be inc'd), pm; [k4, p1] twice, k4 – Cable section (2 sts will be inc'd), pm; work 1 (2, 3) sts in Seed st (4 sts will be inc'd). **Note:** Incs are completed on Row 16 of Chart shown – additional incs are worked for sizes M and L (see below).

Continue as established; work Rows 1 – 28 from Chart, working incs as indicated—60 (64, 68) sts after Row 16; 5 (6, 7) sts in Seed st at each side.

**Rows 29 – 40:** Repeat Rows 17 – 28.

**Row 41:** Repeat Row 17.

#### Size Small only

Go to **Shape Cap**.

#### Sizes Medium and Large

**Row 42:** Work as Row 18, inc 2 sts as follows: Work (6, 7) sts in Seed st, M1; cont across to beg of Seed st section at opposite side, M1, work in Seed st to end—(66, 70) sts.

#### Size Medium only

**Row 43:** Work as Row 19, inc 2 sts as follows: Work in patt est across 7 Seed sts and Cable section, M1; work across center sts, end at beg of Cable section, M1; work to end in patt—68 sts.

Go to **Shape Cap**.

#### Size Large only

**Rows 43 - 45:** Work even in patt—8 sts in Seed st at beg and end of rows.

#### Shape Cap

Work Short-Rows as follows, cont in patt:

**Row 1 (WS):** Work in pattern across to Cable section at end of row (21 sts remain), turn, leaving rem sts unworked.

**Row 2:** Slip 1 purlwise, work in patt across to Cable section at end of row, turn, leaving rem sts unworked.

**Row 3:** Slip 1 purlwise, work to end (across all sts) in patt.

Bind off all sts in patt.

### FINISHING

Sew shoulder seams. Set in Sleeves; sew sleeve and side seams.

#### Collar

With RS facing, using circular needle, beg at center neck on right Front, pick up and knit 1 st in each row to shoulder, 1 st in shoulder seam, 1 st in each bound-off st of Back neck, 1 st in shoulder seam, down left Front as right Front to beg (center Front).

Work in Short-rows in 2 x 2 rib as follows:

**Row 1:** (RS of Collar) Work two thirds of the total number of picked-up sts, pm, turn.

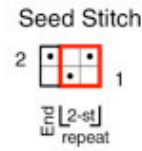
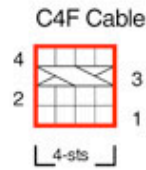
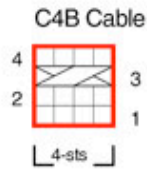
**Row 2:** Slip 1, work one third of the total number of sts picked up, pm, turn.

**Row 3:** Slip 1, work to marker, remove marker, work 2 more sts in patt, replace marker, turn.

Repeat Row 3 until all sts are being worked in 2 x 2 rib.

Bind off all sts in patt.

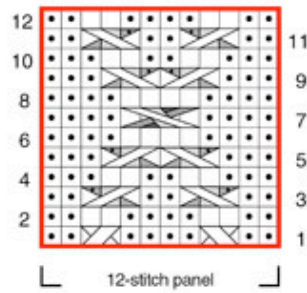
Using yarn needle, weave in ends.



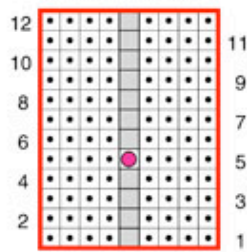
**KEY**

- Knit on RS, purl on WS
- Purl on RS, knit on WS
- No stitch
- Flower (see text)
- Sleeves: Make 1
- Sleeves: Work 1 (2, 3) sts in Seed st
- Sleeves: Purl 1 (2, 3)
- Tw2L (see text)
- Tw2R (see text)
- C3F-Tw2L (see text)
- C3B-Tw2R (see text)
- C3B-Tw2L (see text)
- C4B: Slip 2 sts to cn, hold to back, k2, k2 from cn
- C4F: Slip 2 sts to cn, hold to front, k2, k2 from cn
- C4F-Tw2R/Tw2L (see text)
- C4F-Tw2L/Tw2L (see text)
- Pattern repeat
- Sleeves - Seed stitch section
- Sleeves - Cable section

**Center Cable Panel - Back and Front**



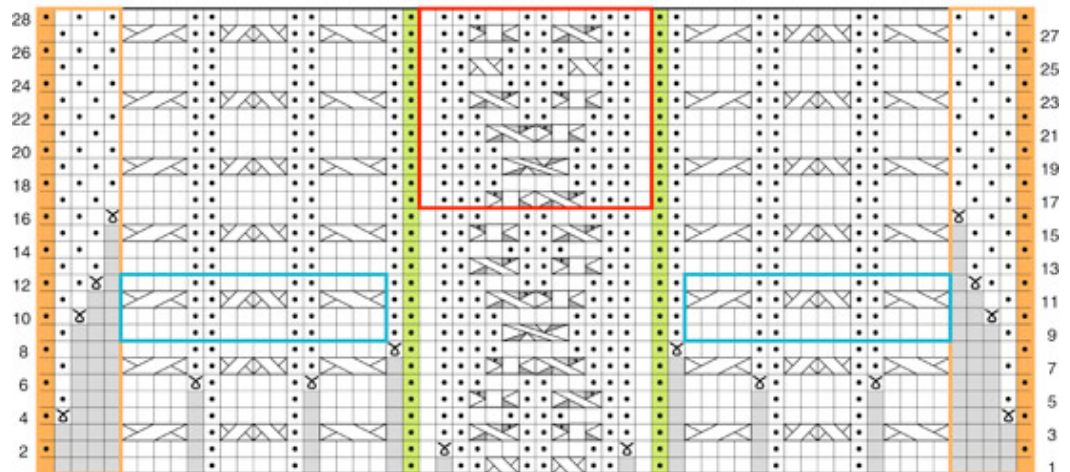
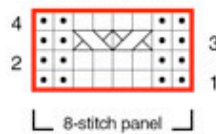
**Front Side Panel**

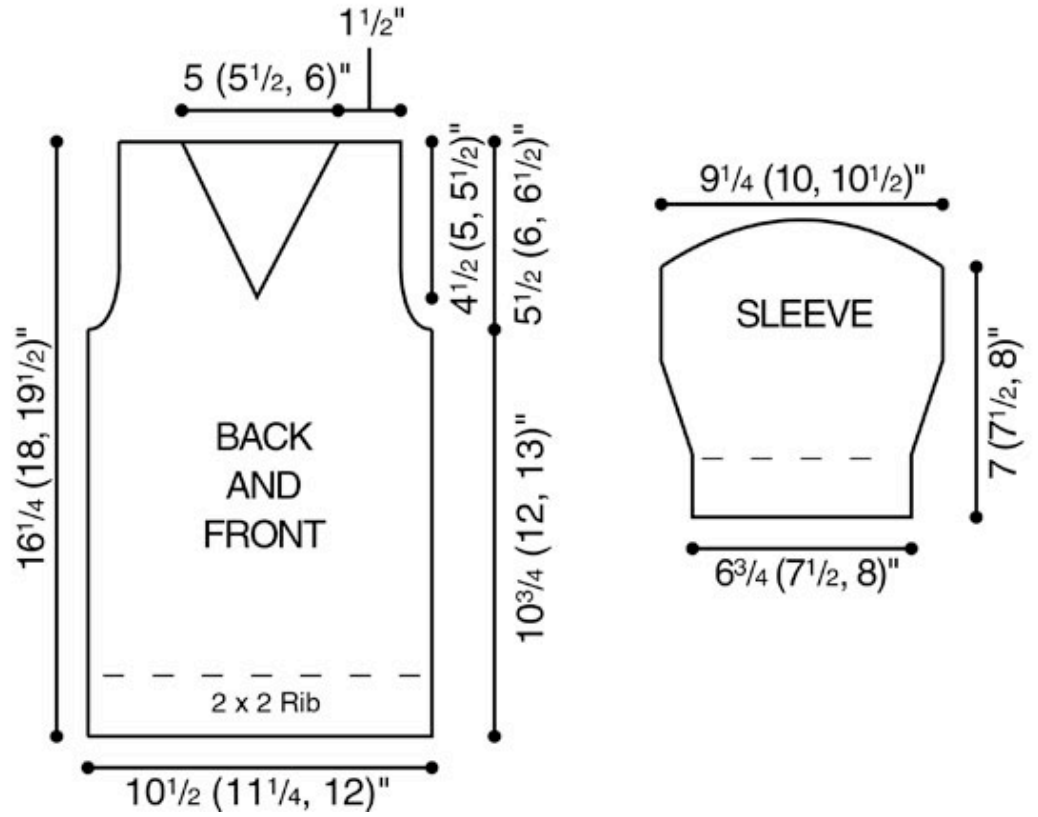


increase every Row 5 for  
Flower (see text)

Sleeve - all sizes - Rows 1 - 28

**Back Side Panel**





[Visit Bond America online](#)

[Visit Caron International online](#)

**CARON**

©2008 Caron International