

**WESTERN KENTUCKY UNIVERSITY**  
**DEPARTMENT OF ATHLETICS**  
1605 Avenue of Champions  
Bowling Green, Ky. 42101  
270-745-4298  
www.WKUSports.com

**CREDITS**

**EXECUTIVE EDITOR**  
Kyle Allen

© 2011, Western Kentucky University Department of Athletics

**WESTERN KENTUCKY UNIVERSITY STATEMENT OF PURPOSE**

As a nationally prominent university, Western Kentucky University engages the globe in acclaimed, technologically enhanced academic programs. An inspiring faculty promotes entrepreneurial success and a unique campus spirit to attract an intellectually exciting and diverse family of the nation's best students.

WKU provides students with rigorous academic programs in education, the liberal arts and sciences, business, and traditional and emerging professional programs, with emphasis at the baccalaureate level, complemented by relevant associate and graduate-level programs.

The University places a premium on teaching and student learning. WKU faculty engage in creative activity and diverse scholarship, including basic and applied research, designed to expand knowledge, improve instruction, increase learning, and provide optimum service to the state and nation. The University directly supports its constituents in its designated service areas of Kentucky with professional and technical expertise, cultural enrichment, and educational assistance. The University encourages applied research and public service in support of economic development, quality of life, and improvement of education at all levels, especially elementary and secondary schools. In particular, WKU faculty contribute to the identification and solution of key social, economic, scientific, health, and environmental problems within its reach, but particularly throughout its primary service area.

Maintaining a campus of distinctive history and character, WKU sustains a student population of increasing quality. It fulfills its responsibility for access through its Bowling Green Community College, regional campus programs in Glasgow, Owensboro and Elizabethtown/Radcliff/Ft. Knox, and distance/on-line learning.

WKU's commitment is to ensure value in a holistic learning experience through high standards for student achievement and conduct, a strong faculty, technological innovation, personalized attention, broad access, and public accountability for actions and outcomes.

WKU recognizes that its mission continues to evolve in response to regional, national, and global changes, and the need for lifelong learning.

**WKU ATHLETICS MISSION STATEMENT**

The mission of the Western Kentucky University Department of Intercollegiate Athletics is to support the university vision by providing a comprehensive, high quality education for student-athletes and to serve the university community, alumni, and friends through success and distinction within an environment of uncompromising integrity. The WKU Athletic Department seeks to be a source of pride for the citizens of the Commonwealth of Kentucky and to be recognized as a nationally prominent program by consistently winning Sun Belt Conference championships and achieving frequent success in NCAA post-season competitions. It is also imperative that we compete with dignity, honor and respect in upholding and advancing WKU's rich history and tradition.

We must operate in a manner that embraces the guidelines and principles established by the NCAA and Sun Belt Conference, which promote the principles of sportsmanship and ethical conduct. Fair and equitable opportunities will be a priority and will be provided for student-athletes and staff to participate in intercollegiate athletics at the Division I level regardless of gender and ethnicity. Our ultimate purpose is to provide a world class academic and athletic experience for our student-athletes resulting in the vital personal development necessary for long term success.



**Table Of Contents**

**Media Information..... 2-4**  
 Table of Contents ..... 2  
 Quick Facts ..... 3  
 2012 Schedules ..... 4

**Hilltopper Coach ..... 6-7**  
 Director of Tennis Jeff True ..... 6  
 Career Record ..... 7

**2012 Hilltoppers ..... 8-18**  
 Roster ..... 8  
 Seniors ..... 9-11  
 Juniors ..... 12-14  
 Sophomores ..... 15-16  
 Freshmen ..... 17-18

**2011 Hilltopper Season In Review ..... 19-21**  
 2011 Statistics and Results ..... 19  
 Match-By-Match Results ..... 20-21

**Hilltopper History ..... 22-28**  
 Year-By-Year Records ..... 22-23  
 Year-By-Year Results ..... 24-27  
 WKU Athletic Hall of Fame ..... 28

**Lady Topper Coach ..... 30-31**  
 Director of Tennis Jeff True ..... 30  
 Career Record ..... 31

**2012 Lady Toppers ..... 32-38**  
 Roster ..... 32  
 Juniors ..... 33-34  
 Sophomores ..... 35-38  
 Freshman ..... 38

**2011 Lady Topper Season In Review .. 39-41**  
 2011 Statistics and Results ..... 39  
 Match-By-Match Results ..... 40-41

**Lady Topper History ..... 42-43**  
 Year-By-Year Records ..... 42  
 WKU Athletic Hall of Fame ..... 43



**We Are WKU**

In all references, please refer to us as either Western Kentucky University or WKU. Please do not use Western, Western Ky., W. Kentucky or any other variation.

## 2012 WKU Hilltopper Tennis Quick Facts

**Location:** Bowling Green, KY 42101  
**Founded:** 1906  
**Enrollment:** 20,885  
**Nickname:** Hilltoppers  
**Colors:** Red (PMS 199) & White  
**Conference:** Sun Belt  
**President** Dr. Gary Ransdell (WKU, 1973)  
**Athletics Director:** Ross Bjork (Emporia State, 1995)  
**Senior Associate AD:** Todd Stewart  
**Associate ADs:** Craig Biggs, B.J. Burton, Jim Clark, Pam Herriford, Darrell Horn  
**Athletic Department Website:** www.WKUsports.com

### Program History

**First Season of Tennis:** 1936  
**All-Time Record:** 741-472 (72 seasons)  
**SBC Championships (1983-present):** 0  
**OVC Championships:** 19

### Hilltopper Tennis Coaching Staff

**Director of Tennis:** Jeff True  
**Alma Mater:** Indiana, 1981  
**Record at WKU:** 239-277 (26th Season)  
**Career Record:** Same  
**Assistant Coach:** Chad True  
**Alma Mater:** WKU, 2008

### Team Information

**2011 Overall Record:** 6-12  
 (4-5 home / 2-6 road / 0-1 neutral)  
**2011 Sun Belt Record:** 0-1 (SBC Tournament)  
**Finish:** 7th  
**Postseason:** n/a  
**Letterwinners Returning / Lost:** 8/1  
**Newcomers:** 4

### WKU Athletic Media Relations

**Men's/Women's Tennis Contact:** Kyle Allen  
 Office: (270) 745-4298 / Cell: (270) 350-6173  
 E-mail: kyle.allen@wku.edu  
**Senior Associate AD / Communications:** Todd Stewart  
 Office: 270-745-3161 / Cell: 270-991-9750  
 E-mail: todd.stewart@wku.edu  
**Director: Chris Glowacki**  
 Office: 270-745-5388 / Cell: 270-791-8499  
 E-mail: chris.glowacki@wku.edu  
**Assistant Director:** Michael Schroeder  
 Office: 270-745-5045 / Cell: 270-799-8984  
 Email: michael.schroeder@wku.edu  
**Assistant Director:** Melissa Anderson  
 Office: 270-745-3756 / Cell: 314-368-1995  
 Email: melissa.anderson@wku.edu  
**Media Relations Assistant:** Mike Haase  
 Office: 270-745-2599 / Cell: 630-748-9847  
 Email: michael.haase@wku.edu  
**Sports Information Director (retired):** Paul Just  
 E-mail: paul.just@wku.edu

## 2012 WKU Lady Topper Tennis Quick Facts

**Location:** Bowling Green, KY 42101  
**Founded:** 1906  
**Enrollment:** 20,885  
**Nickname:** Lady Toppers  
**Colors:** Red (PMS 199) & White  
**Conference:** Sun Belt  
**President** Dr. Gary Ransdell (WKU, 1973)  
**Athletics Director:** Ross Bjork (Emporia State, 1995)  
**Senior Associate AD:** Todd Stewart  
**Associate ADs:** Craig Biggs, B.J. Burton, Jim Clark, Pam Herriford, Darrell Horn  
**Athletic Department Website:** www.WKUsports.com

### Program History

**First Season of Women's Tennis:** 1974  
**SBC Championships (1985-present):** 0  
**OVC Championships:** 2  
**KWIC Championships:** 2

### Lady Topper Tennis Coaching Staff

**Director of Tennis:** Jeff True  
**Alma Mater:** Indiana, 1981  
**Record at WKU:** 103-93 (12th Season)  
**Career Record:** Same  
**Assistant Coach:** Chad True  
**Alma Mater:** WKU, 2008

### Team Information

**2011 Overall Record:** 13-7  
 (7-4 home / 6-2 road / 0-1 neutral)  
**2011 Sun Belt Record:** 0-1 (SBC Tournament)  
**Finish:** 12th  
**Postseason:** n/a  
**Letterwinners Returning / Lost:** 6/2  
**Newcomers:** 2

### WKU Athletic Media Relations

**Men's/Women's Tennis Contact:** Kyle Allen  
 Office: (270) 745-4298 / Cell: (270) 350-6173  
 E-mail: kyle.allen@wku.edu  
**Senior Associate AD / Communications:** Todd Stewart  
 Office: 270-745-3161 / Cell: 270-991-9750  
 E-mail: todd.stewart@wku.edu  
**Director: Chris Glowacki**  
 Office: 270-745-5388 / Cell: 270-791-8499  
 E-mail: chris.glowacki@wku.edu  
**Assistant Director:** Michael Schroeder  
 Office: 270-745-5045 / Cell: 270-799-8984  
 Email: michael.schroeder@wku.edu  
**Assistant Director:** Melissa Anderson  
 Office: 270-745-3756 / Cell: 314-368-1995  
 Email: melissa.anderson@wku.edu  
**Media Relations Assistant:** Mike Haase  
 Office: 270-745-2599 / Cell: 630-748-9847  
 Email: michael.haase@wku.edu  
**Sports Information Director (retired):** Paul Just  
 E-mail: paul.just@wku.edu

## 2012 WKU Men's Tennis Schedule

Day	Date	Opp.	Location	Time
<b>January</b>				
Fri.	Jan. 27	Lipscomb	Nashville, Tenn.	7:00 p.m.
<b>February</b>				
Fri.	Feb. 10	Austin Peay	Clarksville, Tenn.	1:00 p.m.
Sat.	Feb. 18	Lindsey Wilson	Morehead, Ky.	11:00 a.m.
Sun.	Feb. 19	Morehead St.	Morehead, Ky.	1:00 p.m.
Sat.	Feb. 25	Murray St.	Murray, Ky.	1:00 p.m.
<b>March</b>				
Fri.	<b>March 2</b>	<b>SIU-Edwardsville</b>	<b>Bowling Green, Ky.</b>	<b>1:00 p.m.</b>
Sun.	March 4	Detroit	Nashville, Tenn.	1:00 p.m.
Mon.	March 5	Alabama A&M	Huntsville, Ala.	1:00 p.m.
Tues.	March 6	North Alabama	Florence, Ala.	1:00 p.m.
Wed.	March 7	Alabama-Huntsville	Huntsville, Ala.	1:00 p.m.
Sun.	March 25	Tennessee St.	Nashville, Tenn.	3:00 p.m.
<b>April</b>				
Sun.	April 1	Bellarmine	Louisville, Ky.	11:00 a.m.
Sun.	April 8	Tennessee St.	Nashville, Tenn.	11:00 a.m.
Mon.	April 9	Cumberland	Lebanon, Tenn.	2:00 p.m.
Fri.	April 13	So. Indiana	Evansville, Ind.	3:00 p.m.
<b>Sun.</b>	<b>April 15</b>	<b>North Alabama</b>	<b>Bowling Green, Ky.</b>	<b>1:00 p.m.</b>
Thurs-Sun.	April 19-22	SBC Tournament	Denton, Texas	TBA

• All times (CT) and subject to change • Home games in bold  
 • Check www.WKUsports.com for information regarding home locations

## 2012 WKU Women's Tennis Schedule

Day	Date	Opp.	Location	Time
<b>January</b>				
Fri.	Jan. 27	Lipscomb	Nashville, Tenn.	5:00 p.m.
<b>February</b>				
Fri.	Feb. 10	Austin Peay	Clarksville, Tenn.	3:00 p.m.
Sat.	Feb. 11	Belmont	Nashville, Tenn.	11:00 a.m.
Sat.	Feb. 11	Ky. Wesleyan	Nashville, Tenn.	5:00 p.m.
Sun.	Feb. 12	Bellarmine	Louisville, Ky.	3:00 p.m.
Sat.	Feb. 18	Lindsey Wilson	Morehead, Ky.	1:00 p.m.
Sun.	Feb. 19	Morehead State	Morehead, Ky.	9:00 a.m.
<b>March</b>				
Fri.	<b>March 2</b>	<b>SIU-Edwardsville</b>	<b>Bowling Green, Ky.</b>	<b>1:00 p.m.</b>
Mon.	March 5	Alabama A&M	Huntsville, Ala.	1:00 p.m.
Tues.	March 6	North Alabama	Florence, Ala.	1:00 p.m.
Wed.	March 7	Alabama-Huntsville	Huntsville, Ala.	1:00 p.m.
Sun.	March 25	Tennessee St.	Nashville, Tenn.	10:00 a.m.
Sun.	March 25	Middle Tennessee	Murfreesboro, Tenn.	3:00 p.m.
<b>April</b>				
Sun.	April 8	Tennessee St.	Nashville, Tenn.	11:00 a.m.
Fri.	April 13	So. Indiana	Evansville, Ind.	3:00 p.m.
<b>Sun.</b>	<b>April 15</b>	<b>North Alabama</b>	<b>Bowling Green, Ky.</b>	<b>1:00 p.m.</b>
Thurs-Sun.	April 19-22	SBC Tournament	Denton, Texas	TBA

• All times (CT) and subject to change • Home matches in bold  
 • Check www.WKUsports.com for information regarding home locations



## 2012 Hilltopper Tennis

Coach.....	6-7
Roster .....	8
Student-Athletes.....	9-18
2011 Season in Review .....	19-21
Hilltopper History .....	22-28



# Director of Men's Tennis Jeff True



## JEFF TRUE

**WKU Director of Tennis (Indiana, 1981)**  
**Career Men's Record: 239-277**  
**25 Seasons**

Jeff True has forever etched his name in the WKU tennis record books — both on the men's side and the women's side.

With 239 career wins in 25 seasons directing the men's team, True currently ranks second in Hilltopper history in wins, behind only Hall of Fame coach Ted Hornback. His 103 wins as the women's head coach top the charts in Lady Topper history, breaking the original mark set by Betty Langely.

True took over the Hilltopper tennis program in 1982, becoming the fifth coach in the program's history. After just one year, WKU tennis made the transition from the Ohio Valley Conference to the Sun Belt Conference, joining the league in 1983.

Under True's guidance, the Hilltoppers elevated to a fourth-place finish in just the program's third year in the Sun Belt, and recorded the first overall winning record in 1987 (10-5). In 1989, True left the tennis program, before returning for his second stint as head coach in 1995.

In 1999, True led the Hilltopper tennis program to a school record 27 regular season wins, finishing the year with a 27-3 record. Starting in 2005, True would guide the Hilltoppers to six consecutive winning seasons, including an 11-9 mark in 2010.

True has brought a wealth of experience into the WKU tennis program, including plenty of playing experience to help earn the respect of current and former players.

As a collegiate player, True played four years at Indiana University, earning all-Big Ten honors in 1980 and 1981. As a standout high school athlete, True was nationally ranked as a junior, while leading John Adams High School to an Indiana state championship.

True's teaching ability was honored in 1992, as he was named the Kentucky Tennis Association Pro of the Year. Aside from that honor, True has also built a steady family dynasty at WKU. In 1999 and 2007, the True family of tennis athletes were named the Kentucky Tennis Association Family of the Year, and in 2000 he won a father-son United States Tennis Association National Championship with his son, Kyle.

His daughter, Carrie, was named an all-Sun Belt Conference performer in 2011 after wrapping up her four-year career on the Hill. His son, Chad, currently serves as his assistant coach.

True and his wife Brenda have five children: sons Kyle, Chad, Andy and Will, and a daughter, Carrie.

### The True File

**High School:** John Adams HS (Indiana)

**College:** Indiana University (1981)

**Hilltopper Head Coach:**  
1982-89, 1995-present (25 seasons)

**Overall Coaching Record:**  
Record at WKU: 239-277  
Best Season: 27-3 (1999)

**Playing Career (Indiana):**

- Four-year letterwinner at Indiana
- All-Big Ten honors in 1980 and 1981

**Coaching Career (WKU):**

- WKU Head Coach - 1982-1989  
Overall Record (8 seasons): 62-92
- WKU Head Coach - 1995-present  
Overall Record (17 seasons): 177-185  
Total Record (25 seasons): 239-277

**Honors:**

- 1992 KTA Pro of the Year
- 1999 KTA Family of the Year
- 2000 USTA Father-Son National Title
- 2007 KTA Family of the Year

**Personal:**

- Wife - Brenda
- Children -  
Sons: Kyle, Chad, Andy and Will  
Daughter: Carrie

## Year-By-Year Records Under True

Year	Coach	Record	Conf. Finish
1982	Jeff True	5-16 (.238)	4th, OVC
1983	Jeff True	3-11 (.214)	7th, Sun Belt
1984	Jeff True	6-12 (.333)	7th, Sun Belt
1985	Jeff True	13-13 (.500)	4th, Sun Belt
1986	Jeff True	10-16 (.385)	5th, Sun Belt
1987	Jeff True	10-5 (.667)	5th, Sun Belt
1988	Jeff True	8-10 (.444)	7th, Sun Belt
1989	Jeff True	7-9 (.438)	7th, Sun Belt
1995	Jeff True	11-12 (.478)	4th, Sun Belt
1996	Jeff True	9-11 (.450)	6th, Sun Belt
1997	Jeff True	9-19 (.321)	8th, Sun Belt
1998	Jeff True	10-11 (.476)	8th, Sun Belt
1999	Jeff True	27-3 (.900)	5th, Sun Belt
2000	Jeff True	9-12 (.429)	6th, Sun Belt
2001	Jeff True	8-10 (.444)	8th, Sun Belt
2002	Jeff True	6-15 (.300)	8th, Sun Belt
2003	Jeff True	4-17 (.190)	8th, Sun Belt
2004	Jeff True	8-13 (.381)	8th, Sun Belt
2005	Jeff True	13-10 (.565)	8th, Sun Belt
2006	Jeff True	12-7 (.632)	8th, Sun Belt
2007	Jeff True	9-9 (.500)	8th, Sun Belt
2008	Jeff True	13-5 (.722)	8th, Sun Belt
2009	Jeff True	11-9 (.550)	8th, Sun Belt
2010	Jeff True	12-10 (.545)	7th, Sun Belt
2011	Jeff True	6-12 (.333)	7th, Sun Belt

• Jeff True — 25 Seasons to Date — 239-277 (.463) •

## Hilltopper Coaching Ranks

Rank	Year(s)	Coach	Record
1	1939-42, 1946, 1948-76	Ted Hornback	374-76 (.831)
2	<b>1982-89, 1995-present</b>	<b>Jeff True</b>	<b>239-277 (.463)</b>
3	1977-81	Ray Rose	50-60 (.455)
4	1991-94	Jody Bingham	41-47 (.466)
5	1936-38	E.B. Stansbury	18-3 (.857)
6	1990	Scott Vowels	11-8 (.579)
7	1947	Dee Gibson	8-1 (.889)
<b>Total</b>	<b>72 Seasons</b>	<b>7 Coaches</b>	<b>735-460 (.615)</b>

**ALPHABETICAL ROSTER**

<b>Name</b>	<b>Class</b>	<b>Hometown</b>
Caleb Ball	So-1L	Louisville, Ky.
Patrick De Seroux	So-1L	Lexington, Ky.
Andrew Fish	Fr-HS	Alpharetta, Ga.
Brody Freeman	Fr-HS	Corbin, Ky.
Lance Freeman	Jr-2L	Corbin, Ky.
Craig Kirchgessner	Sr-2L	New Albany, Ind.
Kento Okita	Fr-HS	Fort Wright, Ky.
Yushi Okita	Fr-HS	Fort Wright, Ky.
Tyler Patner	Jr-1L	Chicago, Ill.
Arul Selvan	Sr-3L	Chennai, India
Josh Smith	So-1L	Athens, Ga.
Robert Whitmer	Jr-2L	Owensboro, Ky.
Alex Witzgall	Sr-1L	Nashville, Tenn.

**Head Coach:** Jeff True (Indiana, 1981) – 26th Season

**Assistant Coach:** Chad True (WKU, 2008)

**ROSTER BREAKDOWN BY CLASS**

Seniors — 2

Juniors — 3

Sophomores — 3

Freshmen — 4

**ROSTER BREAKDOWN BY STATE / COUNTRY**

Kentucky — 6

Georgia — 2

Illinois — 1

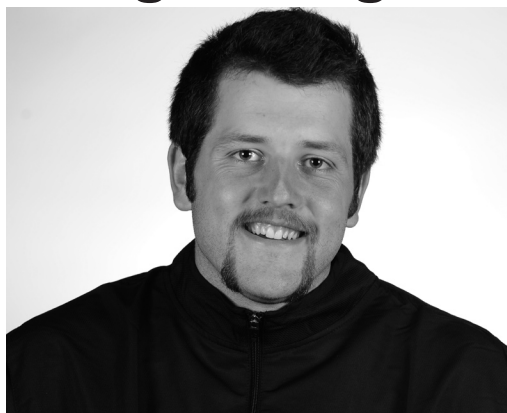
Indiana — 1

Tennessee — 1

India — 1



# Craig Kirchgessner



## CRAIG KIRCHGESSNER

Senior  
New Albany, Ind.

**2011 (Junior):** Responded well to a move from the No. 1 singles spot to the No. 3 and No. 4 position, winning four in a row late in the season from both spots...Finished with five singles wins, including a 5-5 mark in the final 10 singles of the season...Four of his five singles wins were in straight sets, with one win in three sets against Felipe Cirne Lima of Belmont, battling back after losing the opening set...Picked up seven doubles wins with a pair of teammates...Went 3-5 with freshman Caleb Ball and 4-5 from the No. 1 doubles position with Arul Selvan.

**2010 (Sophomore):** Teamed with Thomas Krug to lead WKU in doubles wins with nine in 2010...The duo played all matches from the No. 1 position, and ended the season on a three-match winning streak...Went 6-10 in singles play, playing mainly as a No. 4 or a No. 5...Won three consecutive matches to close out the month of March.

### Craig Kirchgessner's Career Statistics

#### Singles

Year	Overall	Dual	1	2	3	4	5	6
2010	6-10	6-10	0-0	0-1	0-2	2-4	3-3	1-0
2011	5-13	5-13	0-7	0-2	3-2	2-1	0-1	0-0
<b>Total</b>	<b>11-23</b>	<b>11-23</b>	<b>0-7</b>	<b>0-3</b>	<b>3-4</b>	<b>4-5</b>	<b>3-4</b>	<b>1-0</b>

#### Doubles

Year	Overall	Dual	1	2	3
2010	9-6	9-6	9-6	0-0	0-0
2011	7-10	7-10	4-5	3-5	0-0
<b>Total</b>	<b>16-26</b>	<b>16-26</b>	<b>13-11</b>	<b>3-5</b>	<b>0-0</b>

# Arul Selvan



## ARUL SELVAN

Senior  
Chennai, India

**2011 (Junior):** Won three of his first four singles to open the year, including a pair of wins reaching a third set...Won three singles in a row after dropping the season opener against Union College...Went a team-best 5-2 from the No. 2 singles position, with two of those wins via the comeback variety after dropping the opening set...Played all doubles from the No.1 position, going 4-5 with teammate Craig Kirchgessner...The duo became teammates in the middle of the season, winning three of the their first five...Of their five defeats, three came by two points or less.

**2010 (Sophomore):** Finished third on the team with 12 singles wins in 2010, including going a perfect 7-0 from the No. 3 singles spot...Started the season winning four consecutive singles matches, which were all WKU team victories...Ended the season on a three-match winning streak...Went 4-1 in doubles with teammate Priyank Gangadharan, playing from No. 2 and No. 3 doubles...Ended the season with an 8-6 record in doubles play.

**2009 (Freshman):** Went 9-5 in singles play for WKU, including a 5-2 mark from the No. 5 singles spot and a perfect 3-0 record from No. 4...Finished fourth on the team in singles wins...Won three doubles matches with three different partners.

### Arul Selvan's Career Statistics

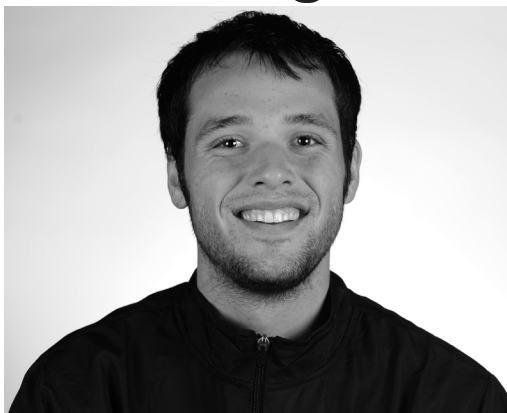
#### Singles

Year	Overall	Dual	1	2	3	4	5	6
2009	9-5	9-5	0-0	0-0	0-0	3-0	5-2	1-3
2010	12-4	12-4	0-0	1-0	7-0	1-3	3-1	0-0
2011	6-10	6-10	1-8	5-2	0-0	0-0	0-0	0-0
<b>Total</b>	<b>27-19</b>	<b>27-19</b>	<b>1-8</b>	<b>6-2</b>	<b>7-0</b>	<b>4-3</b>	<b>8-3</b>	<b>1-3</b>

#### Doubles

Year	Overall	Dual	1	2	3
2009	3-8	3-8	1-0	0-1	2-7
2010	7-4	7-4	1-0	2-4	4-0
2011	5-12	5-12	5-12	0-0	0-0
<b>Total</b>	<b>15-24</b>	<b>15-24</b>	<b>7-12</b>	<b>2-5</b>	<b>6-7</b>

# Alex Witzgall



## Alex Witzgall

Senior  
Nashville, Tenn.

**2011 (Junior):** Member of the Hilltopper tennis team.

**2010 (Sophomore):** Member of the Hilltopper tennis team.

**2009 (Freshman):** Went 3-2 in singles play from the No. 5 and the No. 6 position...Was a perfect 2-0 from the No. 5 spot...Did not participate in a doubles event on the year.

<b>Alex Witzgall's Career Statistics</b>								
<b>Singles</b>								
<b>Year</b>	<b>Overall</b>	<b>Dual</b>	<b>1</b>	<b>2</b>	<b>3</b>	<b>4</b>	<b>5</b>	<b>6</b>
2009	3-2	3-2	0-0	0-0	0-0	0-0	2-0	1-2
2010	0-0	0-0	0-0	0-0	0-0	0-0	0-0	0-0
2011	0-0	0-0	0-0	0-0	0-0	0-0	0-0	0-0
<b>Total</b>	<b>3-2</b>	<b>3-2</b>	<b>0-0</b>	<b>0-0</b>	<b>0-0</b>	<b>0-0</b>	<b>2-0</b>	<b>1-2</b>
<b>Doubles</b>								
<b>Year</b>	<b>Overall</b>	<b>Dual</b>	<b>1</b>	<b>2</b>	<b>3</b>			
2009	0-0	0-0	0-0	0-0	0-0			
2010	0-0	0-0	0-0	0-0	0-0			
2011	0-0	0-0	0-0	0-0	0-0			
<b>Total</b>	<b>0-0</b>	<b>0-0</b>	<b>0-0</b>	<b>0-0</b>	<b>0-0</b>			

# Lance Freeman



## LANCE FREEMAN

Junior  
Corbin, Ky.

**2011 (Sophomore):** Tied for the team lead with nine singles wins in his sophomore campaign after compiling 13 wins in his freshman season...Played from each of the top four singles spots, including a team-best 8-5 mark from the No. 4 singles position...Won five of seven matches after falling in the season opener to begin the season with a 5-3 record... Never lost more than two matches in a row all season and had one three-match winning streak...Teamed with senior Currie Martin to lead the Hilltoppers with a 9-5 doubles record, including a 6-2 mark from the No. 3 singles spot.

**2010 (Freshman):** Made an immediate impact in first season with the Hilltopper tennis program, finishing second on the squad with 13 singles wins...Went 13-6 overall, playing mainly from the No. 5 and No. 6 position...Won eight consecutive singles matches from the end of February to the end of March...Five of the eight wins were in straight sets...Went 5-4 in doubles play, teaming up with several different Hilltoppers...Won four straight doubles matches down the final stretch of the season.

### Lance Freeman's Career Statistics

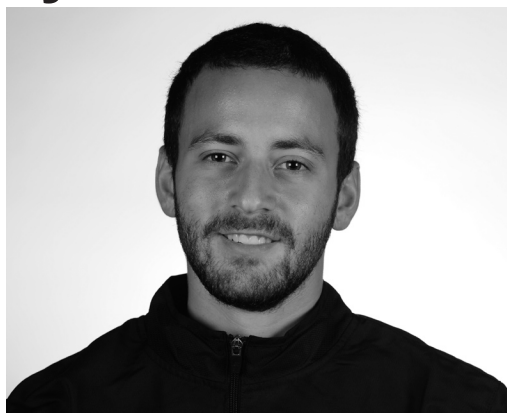
#### Singles

Year	Overall	Dual	1	2	3	4	5	6
2010	13-6	13-6	0-0	0-0	1-0	1-0	4-3	7-3
2011	9-8	9-8	0-1	1-1	0-1	8-5	0-0	0-0
<b>Total</b>	<b>22-14</b>	<b>22-14</b>	<b>0-1</b>	<b>1-1</b>	<b>1-1</b>	<b>9-5</b>	<b>4-3</b>	<b>7-3</b>

#### Doubles

Year	Overall	Dual	1	2	3
2010	5-4	5-4	0-0	3-3	2-1
2011	9-5	9-5	0-0	3-3	6-2
<b>Total</b>	<b>14-9</b>	<b>14-9</b>	<b>0-0</b>	<b>6-6</b>	<b>8-3</b>

# Tyler Patner



## TYLER PATNER

Junior  
Chicago, Ill.

**2011 (Sophomore):** Won the first single of his career on April 8 against Christopher Bates of Belmont, a thrilling three-set victory after falling in the first set...Two of the three singles he participated in went to a third set...Played primarily from the No. 6 singles position...Went 1-0 in doubles play with teammate Robert Whitmer, picking up an 8-3 win over Tennessee State, playing from the No. 2 doubles spot.

<u>Tyler Patner's Career Statistics</u>								
<b>Singles</b>								
Year	Overall	Dual	1	2	3	4	5	6
2011	1-2	1-2	0-0	0-0	0-0	0-0	0-0	1-2
<b>Total</b>	<b>1-2</b>	<b>1-2</b>	<b>0-0</b>	<b>0-0</b>	<b>0-0</b>	<b>0-0</b>	<b>0-0</b>	<b>1-2</b>
<b>Doubles</b>								
Year	Overall	Dual	1	2	3			
2011	1-2	1-2	0-0	1-0	0-2			
<b>Total</b>	<b>1-2</b>	<b>1-2</b>	<b>0-0</b>	<b>1-0</b>	<b>0-2</b>			

# Robert Whitmer



## ROBERT WHITMER

Junior  
Owensboro, Ky.

**2011 (Sophomore):** Tied for the team lead with nine singles wins, including a team-best six-match winning streak from March 7 to April 10...Won a pair of the matches in three sets and had one shutout during the winning streak...Responded after falling to 3-5 on the season, winning six in a row to move to 9-5 on the year in singles...Finished the season 9-7, playing primarily from the No. 5 singles position...Went 1-0 in doubles play with teammate Tyler Patner and 3-3 with Caleb Ball, playing from both the No. 2 and No. 3 spot...Played from the No. 1 singles position early in the season with teammate Arul Selvan.

**2010 (Freshman):** Finished first season on the Hill with a .500 singles record at 5-5, playing primarily from the No. 6 position...Won three consecutive matches through the end of March and into the beginning of April...Partnered with fellow freshman Lance Freeman to win one doubles match at home against Lindsey Wilson.

### Robert Whitmer's Career Statistics

#### Singles

Year	Overall	Dual	1	2	3	4	5	6
2010	5-5	5-5	0-0	0-0	0-0	1-0	0-2	4-3
2011	9-7	9-7	0-0	0-0	1-0	0-0	7-7	1-0
<b>Total</b>	<b>14-12</b>	<b>14-12</b>	<b>0-0</b>	<b>0-0</b>	<b>1-0</b>	<b>1-0</b>	<b>7-9</b>	<b>5-3</b>

#### Doubles

Year	Overall	Dual	1	2	3
2010	1-0	1-0	0-0	0-0	1-0
2011	4-3	4-3	0-0	1-1	3-2
<b>Total</b>	<b>5-3</b>	<b>5-3</b>	<b>0-0</b>	<b>1-1</b>	<b>4-2</b>

# Kaleb Ball



## KALEB BALL

Sophomore  
Louisville, Ky.

**2011 (Freshman):** Finished fourth on the team with six singles wins in his first year on the Hill...Ended the year 6-7, including a three-match winning streak from February 27 to March 7...Two of his wins on the season were via a shutout in straight sets...Was the only Hilltopper to team with four different players in doubles action, winning six combined doubles matches with teammates Craig Kirchgessner and Robert Whitmer...Also picked up a win with Currie Martin.

### Caleb Ball's Career Statistics

#### Singles

Year	Overall	Dual	1	2	3	4	5	6
2011	6-7	6-7	0-0	0-0	0-0	0-1	1-0	5-6
<b>Total</b>	<b>6-7</b>	<b>6-7</b>	<b>0-0</b>	<b>0-0</b>	<b>0-0</b>	<b>0-1</b>	<b>1-0</b>	<b>5-6</b>

#### Doubles

Year	Overall	Dual	1	2	3
2011	7-10	7-10	0-0	4-6	3-4
<b>Total</b>	<b>7-10</b>	<b>7-10</b>	<b>0-0</b>	<b>4-6</b>	<b>3-4</b>

# Patrick De Seroux



**PATRICK DE SEROUX**  
Sophomore  
Lexington, Ky.

**2011 (Freshman):** Member of the Hilltopper tennis team.

### Patrick De Seroux's Career Statistics

#### Singles

Year	Overall	Dual	1	2	3	4	5	6
2011	0-0	0-0	0-0	0-0	0-0	0-0	0-0	0-0
<b>Total</b>	<b>0-0</b>	<b>0-0</b>	<b>0-0</b>	<b>0-0</b>	<b>0-0</b>	<b>0-0</b>	<b>0-0</b>	<b>0-0</b>

#### Doubles

Year	Overall	Dual	1	2	3
2011	0-0	0-0	0-0	0-0	0-0
<b>Total</b>	<b>0-0</b>	<b>0-0</b>	<b>0-0</b>	<b>0-0</b>	<b>0-0</b>

# Josh Smith



**Josh Smith**  
Sophomore  
Athens, Ga.

**On the Hill:** Set to see first collegiate action in the fall of 2012.

**High School/Misc:** Named to the All-Northeast Georgia Tennis Team in 2009 by the Athens Banner Herald...Went 12-0 in singles play in 2009 for Clarke Central High School in Athens, Ga.



## Andrew Fish



## ANDREW FISH

Freshman  
Alpharetta, Ga.

**High School/Misc:** Played for tennis power Northview High School in Alpharetta, Ga...Dominated from the No. 1 doubles position in 2010, finishing 21-0 from that spot...Also played for Winward Tennis Academy.

## Brody Freeman



## BRODY FREEMAN

Freshman  
Corbin, Ky.

**High School/Misc:** Advanced to the Round of 16 in the 2011 KHSAA State Tennis Tournament with Corbin High School after falling in the opening round of the state tournament in 2010...Rated as a No. 8 seed in the 2011 state tournament falling to the eventual state champion.

## Kento Okita

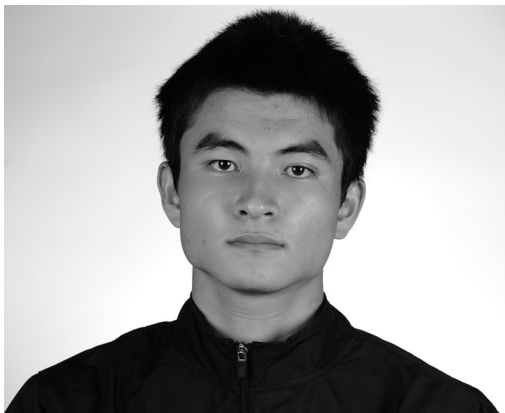


## KENTO OKITA

Freshman  
Fort Wright, Ky.

**High School/Misc:** The twin brother to fellow Hilltopper Yushi Okita...Played high school tennis alongside his brother at Ryle High School, qualifying for the state tournament three times during their high school playing days...Reached the regional semifinals in his senior season.

## Yushi Okita



## YUSHI OKITA

Freshman  
Fort Wright, Ky.

**High School/Misc:** The twin brother to fellow Hilltopper Kento Okita...Played high school tennis alongside his brother at Ryle High School, qualifying for the state tournament three times during their high school playing days...Reached the regional championship in his senior season, falling in three sets.

# 2011 Hilltopper Statistics / Results

Overall Record: 6-12 Conference: 0-0 Region: 0-0 Home: 4-5 Away: 2-6 Neutral: 0-1  
vs National ranked: 0-0 vs Regional ranked: 0-0

## Singles

Player	Overall	Dual	1	2	3	4	5	6
Robert Whitmer	9-7	9-7	0-0	0-0	1-0	0-0	7-7	1-0
Lance Freeman	9-8	9-8	0-1	1-1	0-1	8-5	0-0	0-0
Currie Martin	8-7	8-7	0-0	2-3	6-4	0-0	0-0	0-0
Caleb Ball	6-7	6-7	0-0	0-0	0-0	0-1	1-0	5-6
Arul Selvan	6-10	6-10	1-8	5-2	0-0	0-0	0-0	0-0
Craig Kirchgessner	5-13	5-13	0-7	0-2	3-2	2-1	0-1	0-0
Tyler Patner	1-2	1-2	0-0	0-0	0-0	0-0	0-0	1-2
<b>Totals</b>	<b>46-54</b>	<b>46-54</b>	<b>1-16</b>	<b>8-8</b>	<b>10-7</b>	<b>10-7</b>	<b>8-8</b>	<b>9-8</b>
<b>Percentage</b>	<b>.460</b>	<b>.460</b>	<b>.059</b>	<b>.500</b>	<b>.588</b>	<b>.588</b>	<b>.500</b>	<b>.529</b>

## Doubles

Player	Overall	Dual	1	2	3
Freeman/Martin	9-5	9-5	0-0	3-3	6-2
Kirchgessner/Selvan	4-5	4-5	4-5	0-0	0-0
Ball/Whitmer	3-3	3-3	0-0	0-1	3-2
Ball/Kirchgessner	3-5	3-5	0-0	3-5	0-0
Patner/Whitmer	1-0	1-0	0-0	1-0	0-0
Ball/Martin	1-0	1-0	0-0	1-0	0-0
Selvan/Whitmer	1-7	1-7	1-7	0-0	0-0
Ball/Patner	0-2	0-2	0-0	0-0	0-2
<b>Totals</b>	<b>24-27</b>	<b>24-27</b>	<b>5-12</b>	<b>8-9</b>	<b>11-6</b>
<b>Percentage</b>	<b>.471</b>	<b>.471</b>	<b>.294</b>	<b>.471</b>	<b>.647</b>

Date	Opponent	Site	Result	Score	Overall Record
Jan. 30	Union College	Bowling Green, Ky.	L	1-6	0-1
Feb. 06	Bellarmino	Bowling Green, Ky.	W	6-1	1-1
Feb. 12	Lipscomb	Bowling Green, Ky.	L	1-6	1-2
Feb. 13	Murray State	Bowling Green, Ky.	L	2-5	1-3
Feb. 18	Austin Peay	Clarksville, Tenn.	L	0-5	1-4
Feb. 19	Campbellsville	Bowling Green, Ky.	W	6-1	2-4
Feb. 20	Morehead State	Bowling Green, Ky.	L	2-5	2-5
Feb. 27	Cumberland University	Bowling Green, Ky.	L	3-4	2-6
March 6	Alabama-Huntsville	Huntsville, Ala.	L	2-5	2-7
March 7	Alabama State	Montgomery, Ala.	W	7-0	3-7
March 19	Murray State	Murray, Ky.	L	2-5	3-8
March 20	Tennessee State	Bowling Green, Ky.	W	6-1	4-8
April 3	Tennessee State	Nashville, Tenn.	W	6-1	5-8
April 8	Belmont	Nashville, Tenn.	L	3-4	5-9
April 10	North Alabama	Bowling Green, Ky.	W	5-2	6-9
April 16	SIU-Edwardsville	Edwardsville, Ill.	L	0-4	6-10
April 18	Cumberland University	Lebanon, Tenn.	L	1-6	6-11
*April 20	Florida Atlantic	Mobile, Ala.	L	0-4	6-12

\* - Sun Belt Conference Tournament (Mobile, Ala.)

# 2011 Hilltopper Match-By-Match Results

Overall Record: 6-12 Conference: 0-0 Region: 0-0 Home: 4-5 Away: 2-6 Neutral: 0-1  
vs National ranked: 0-0 vs Regional ranked: 0-0

## Union College 6, WKU 1 Jan 30, 2011 • Bowling Green, Ky.

### Singles

1. Nicolas Ernst (UNION) def. Arul Selvan (WKU).....	6-1, 6-3
2. Yvon Haessig (UNION) def. Craig Kirchgessner (WKU).....	6-4, 6-1
3. Currie Martin (WKU) def. Pierre Vernin (UNION).....	6-3, 6-4
4. Bartos Micher (UNION) def. Lance Freeman (WKU).....	5-7, 6-3, 6-2
5. David Couronne (UNION) def. Robert Whitmer (WKU).....	6-1, 6-1
6. Fredrik Graaner (UNION) def. Caleb Ball (WKU).....	6-4, 6-3

### Doubles

1. Nicolas Ernst/Pierre Vernin (UNION) def. Arul Selvan/Robert Whitmer (WKU).....	8-4
2. Yvon Haessig/David Couronne (UNION) def. Craig Kirchgessner/Caleb Ball (WKU).....	9-8
3. Currie Martin/Lance Freeman (WKU) def. Bartos Micher/Fredrik Graaner (UNION).....	9-8

## WKU 6, Bellarmine 1 Feb. 6, 2011 • Bowling Green, Ky.

### Singles

1. Jacob Knagenhjelm (BELL) def. Craig Kirchgessner (WKU).....	6-1, 6-2
2. Arul Selvan (WKU) def. Carlos Antonioli (BELL).....	6-2, 6-4
3. Currie Martin (WKU) def. Todd Atcher (BELL).....	6-4, 3-6, 6-4
4. Lance Freeman (WKU) def. Paul Clark (BELL).....	6-4, 6-3
5. Robert Whitmer (WKU) def. Alex Chanley (BELL).....	6-3, 6-2
6. Caleb Ball (WKU) def. Chip Jaboly (BELL).....	6-1, 6-4

### Doubles

1. Arul Selvan/Robert Whitmer (WKU) def. Jacob Knagenhjelm/Carlos Antonioli (BELL).....	8-4
2. Craig Kirchgessner/Caleb Ball (WKU) def. Paul Clark/Michael Heinekamp (BELL).....	8-4
3. Currie Martin/Lance Freeman (WKU) def. Todd Atcher/Bryan Skaggs (BELL).....	8-4

## Lipscomb 6, WKU 1 Feb. 12, 2011 • Bowling Green, Ky.

### Singles

1. Oliver Strecker (LIP) def. Craig Kirchgessner (WKU).....	7-6, 6-1
2. Arul Selvan (WKU) def. Chad Pierron (LIP).....	3-6, 6-1, 10-7
3. David Salazar (LIP) def. Currie Martin (WKU).....	6-1, 6-1
4. Tanner Brown (LIP) def. Lance Freeman (WKU).....	6-3, 6-0
5. Colby Shaw (LIP) def. Robert Whitmer (WKU).....	7-5, 6-0
6. Miguel Cortez (LIP) def. Caleb Ball (WKU).....	6-4, 6-2

### Doubles

1. Oliver Strecker/McArdle (LIP) def. Arul Selvan/Robert Whitmer (WKU).....	8-4
2. Colby Shaw/Chad Pierron (LIP) def. Craig Kirchgessner/Caleb Ball (WKU).....	8-4
3. Tanner Brown/David Salazar (LIP) def. Currie Martin/Lance Freeman (WKU).....	8-5

## Murray State 5, WKU 2 Feb. 13, 2011 • Bowling Green, Ky.

### Singles

1. Jorge Caetano (MUR) def. Craig Kirchgessner (WKU).....	6-3, 7-6
2. Arul Selvan (WKU) def. Joao Camara (MUR).....	7-5, 1-6, 6-3
3. Luka Milicevic (MUR) def. Currie Martin (WKU).....	6-4, 6-2
4. Lance Freeman (WKU) def. Renaldo Domoney (MUR).....	2-6, 6-3, 6-4
5. Arthur Valle (MUR) def. Robert Whitmer (WKU).....	6-4, 6-2
6. Mason Johnson (MUR) def. Caleb Ball (WKU).....	6-1, 6-2

### Doubles

1. Caetano/Camara (MUR) def. Arul Selvan/Robert Whitmer (WKU).....	9-8
2. Craig Kirchgessner/Caleb Ball (WKU) def. Milicevic/Domoney (MUR).....	8-4
3. Johnson/Berardo (MUR) def. Currie Martin/Lance Freeman (WKU).....	9-7

## Austin Peay 5, WKU 0 Feb. 18, 2011 • Clarksville, Tenn.

### Singles

1. ADEMOVIC, Jasmin (APSU) def. Craig Kirchgessner (WKU).....	6-1, 6-0
2. NORBIATO, Henrique (APSU) def. Arul Selvan (WKU).....	6-1, 6-0
3. BAILEY, Sean (APSU) def. Currie Martin (WKU).....	6-1, 6-0
4. PAGAN, Joao (APSU) def. Lance Freeman (WKU).....	6-1, 6-3

### Doubles

1. BAILEY, Sean/NORBIATO, Henrique (APSU) def. Arul Selvan/Robert Whitmer (WKU).....	8-2
2. ADEMOVIC, Jasmin/KERR, Drew (APSU) def. Craig Kirchgessner/Caleb Ball (WKU).....	8-2
3. PAGAN, Joao/STORIE, John (APSU) vs. Currie Martin/Lance Freeman (WKU).....	unfinished

## WKU 6, Campbellsville 1 Feb. 19, 2011 • Bowling Green, Ky.

### Singles

1. Carlos Anton (CAMP) def. Craig Kirchgessner (WKU).....	4-6, 7-5, 7-5
2. Arul Selvan (WKU) def. Pablo Numbela (CAMP).....	6-7, 6-2, 6-4
3. Currie Martin (WKU) def. Filip Pavlovic (CAMP).....	6-3, 7-5
4. Lance Freeman (WKU) def. Zac Malyon (CAMP).....	6-1, 6-0
5. Robert Whitmer (WKU) def. Antonio Klie (CAMP).....	6-2, 6-0
6. Caleb Ball (WKU) def. Terry Caven (CAMP).....	6-4, 6-0

### Doubles

1. Carlos Anton/Pablo Numbela (CAMP) def. Arul Selvan/Robert Whitmer (WKU).....	8-6
2. Craig Kirchgessner/Caleb Ball (WKU) def. Zac Malyon/Terry Caven (CAMP).....	8-5
3. Currie Martin/Lance Freeman (WKU) def. Filip Pavlovic/Antonio Klie (CAMP).....	8-2

## Morehead State 5, WKU 2 Feb. 20, 2011 • Bowling Green, Ky.

### Singles

1. Justin Harlow (MOR) def. Craig Kirchgessner (WKU).....	6-3, 6-2
2. David Cliffod (MOR) def. Arul Selvan (WKU).....	7-5, 6-4
3. Currie Martin (WKU) def. Seve Day (MOR).....	6-3, 7-5
4. Lance Freeman (WKU) def. Nathan Martin (MOR).....	7-5, 2-6, 6-3
5. Roger White (MOR) def. Robert Whitmer (WKU).....	7-5, 6-1
6. Hugo Almont (MOR) def. Caleb Ball (WKU).....	6-0, 6-2

### Doubles

1. Bryan/Medcalf (MOR) def. Arul Selvan/Robert Whitmer (WKU).....	9-8
2. Clifford/Day (MOR) def. Craig Kirchgessner/Caleb Ball (WKU).....	8-3
3. Currie Martin/Lance Freeman (WKU) def. White/Blum (MOR).....	8-4

## Cumberland University 4, WKU 3 Feb. 27, 2011 • Bowling Green, Ky.

### Singles

1. Evan Sanna (CUMB) def. Arul Selvan (WKU).....	4-6, 6-0, 6-1
2. Na'im Azhar (CUMB) def. Craig Kirchgessner (WKU).....	6-3, 6-2
3. Pedro Rodrigues (CUMB) def. Currie Martin (WKU).....	6-4, 6-4
4. Lance Freeman (WKU) def. Devin Crotzer (CUMB).....	6-3, 6-4
5. Robert Whitmer (WKU) def. Jeremy Fleming (CUMB).....	6-1, 6-3
6. Caleb Ball (WKU) def. Cristhian Hernandez (CUMB).....	6-2, 6-4

### Doubles

1. Evan Sanna/Na'im Azhar (CUMB) def. Arul Selvan/Robert Whitmer (WKU).....	8-5
2. Pedro Rodrigues/Devin Crotzer (CUMB) def. Craig Kirchgessner/Caleb Ball (WKU).....	8-5
3. Currie Martin/Lance Freeman (WKU) def. Jeremy Fleming/Cristhian Hernandez (CUMB).....	8-1

## Alabama-Huntsville 5, WKU 2 Mar. 6, 2011 • Huntsville, Ala.

### Singles

1. Daniel Canellas (UAH) def. Arul Selvan (WKU).....	6-4, 6-2
2. Christopher Kano (UAH) def. Currie Martin (WKU).....	6-4, 6-0
3. Raphael Oliveira (UAH) def. Lance Freeman (WKU).....	6-3, 6-2
4. Guillermo Reyes (UAH) def. Craig Kirchgessner (WKU).....	6-2, 6-7, 7-3
5. Bruno Medeiros (UAH) def. Robert Whitmer (WKU).....	6-0, 6-2
6. Caleb Ball (WKU) def. Jordan Belcher (UAH).....	6-2, 6-4

### Doubles

1. Daniel Canellas/Christopher Kano (UAH) def. Arul Selvan/Craig Kirchgessner (WKU).....	8-1
2. Raphael Oliveira/Guillermo Reyes (UAH) def. Currie Martin/Lance Freeman (WKU).....	8-6
3. Caleb Ball/Robert Whitmer (WKU) def. Bruno Medeiros/Jordan Belcher (UAH).....	9-8

## WKU 7, Alabama State 0 Mar. 7, 2011 • Montgomery, Ala.

### Singles

1. Arul Selvan (WKU) def. Lex Pierre (ASU).....	6-2, 6-3
2. Currie Martin (WKU) def. Josh Donaldson (ASU).....	6-1, 7-5
3. Craig Kirchgessner (WKU) def. Kevin Tan (ASU).....	7-5, 6-1
4. Lance Freeman (WKU) def. Clifford Frazier (ASU).....	6-1, 7-6
5. Robert Whitmer (WKU) def. Roddrick Ivory (ASU).....	6-1, 6-0
6. Caleb Ball (WKU) def. Lance Delston Jr. (ASU).....	6-0, 6-0

### Doubles

1. Arul Selvan/Craig Kirchgessner (WKU) def. Kevin Tan/Clifford Frazier (ASU).....	8-1
2. Currie Martin/Lance Freeman (WKU) def. Lex Pierre/Roddrick Ivory (ASU).....	8-3
3. Robert Whitmer/Caleb Ball (WKU) def. Josh Donaldson/Lance Delston Jr. (ASU).....	8-1

**Murray State 5, WKU 2**  
Mar. 19, 2011 • Murray, Ky.

**Singles**

- Jorge Caetano (MURRAY) def. Arul Selvan (WKU).....6-2, 6-4
- Joao Camara (MURRAY) def. Lance Freeman (WKU).....6-0, 6-2
- Currie Martin (WKU) def. Luka Milicevic (MURRAY).....7-6, 6-2
- Renaldo Demoney (MURRAY) def. Caleb Ball (WKU).....6-2, 6-0
- Arthur Valle (MURRAY) def. Craig Kirchgessner (WKU).....6-7, 6-1, 10-2
- Robert Whitmer (WKU) def. Mason Johnson (MURRAY).....0-6, 6-2, 11-9

**Doubles**

- Jorge Caetano/Arthur Valle (MURRAY) def. Arul Selvan/Craig Kirchgessner (WKU).....9-8
- Luka Milicevic/Renaldo Demoney (MURRAY) def. Robert Whitmer/Caleb Ball (WKU).....8-2
- Currie Martin/Lance Freeman (WKU) def. Mason Johnson/Jose Berardo (MURRAY).....8-6

**WKU 6, Tennessee State 1**  
Mar. 20, 2011 • Nashville, Tenn.

**Singles**

- Washington, Lawrence (TSU) def. Arul Selvan (WKU).....6-4, 6-2
- Lance Freeman (WKU) def. Ingram, Shaun (TSU).....6-2, 6-0
- Currie Martin (WKU) def. Dowdy, Skyler (TSU).....6-1, 6-0
- Craig Kirchgessner (WKU) def. Ruffin, Gregory (TSU).....6-0, 6-4
- Robert Whitmer (WKU) def. Coleman (TSU).....6-0, 6-0
- Tyler Patner (WKU) def. No player (TSU).....by default

**Doubles**

- Arul Selvan/Craig Kirchgessner (WKU) def. Washington/Ingram (TSU).....9-8
- Robert Whitmer/Tyler Patner (WKU) def. Dowdy/Ruffin (TSU).....8-3
- Lance Freeman/Currie Martin (WKU) def. No player/No player (TSU).....by default

**WKU 6, Tennessee State 1**  
Apr. 3, 2011 • Nashville, Tenn.

**Singles**

- Washington, Lawrence (TSU) def. Lance Freeman (WKU).....6-2, 6-3
- Arul Selvan (WKU) def. Ingram, Shaun (TSU).....6-1, 6-0
- Robert Whitmer (WKU) def. Ruffin, Gregory (TSU).....6-0, 7-5
- Craig Kirchgessner (WKU) def. Dowdy, Skyler (TSU).....6-3, 6-3
- Caleb Ball (WKU) def. Matt Ingram (TSU).....6-0, 6-0
- Currie Martin (WKU) def. No player (TSU).....by default

**Doubles**

- Arul Selvan/Craig Kirchgessner (WKU) def. Washington/Ingram (TSU).....8-5
- Currie Martin/Caleb Ball (WKU) def. Ruffin/Dowdy (TSU).....8-5
- Lance Freeman/Robert Whitmer (WKU) def. No player/No player (TSU).....by default

**Belmont 4, WKU 3**  
Apr. 8, 2011 • Nashville, Tenn.

**Singles**

- Rodrigo Amaral (BELM) def. Arul Selvan (WKU).....4-6, 6-1, 6-0
- Rafael Matos (BELM) def. Currie Martin (WKU).....6-1, 6-2
- Craig Kirchgessner (WKU) def. Felipe Cirne Lima (BELM).....4-6, 6-3, 6-4
- Bruno Silva (BELM) def. Lance Freeman (WKU).....6-2, 6-3
- Robert Whitmer (WKU) def. Jonathan Murrell (BELM).....6-3, 1-6, 6-2
- Tyler Patner (WKU) def. Christopher Bates (BELM).....1-6, 6-2, 6-2

**Doubles**

- Rodrigo Amaral/Rafael Matos (BELM) def. Arul Selvan/Craig Kirchgessner (WKU).....8-5
- Felipe Cirne Lima/Bruno Silva (BELM) def. Currie Martin/Lance Freeman (WKU).....8-5
- Jonathan Murrell/Christopher Bates (BELM) def. Tyler Patner/Caleb Ball (WKU).....8-4

**WKU 5, North Alabama 2**  
Apr. 10, 2011 • Bowling Green, Ky.

**Singles**

- Merlin Witt (UNA) def. Arul Selvan (WKU).....6-3, 6-7, 6-4
- Currie Martin (WKU) def. Mirko Sommerfield (UNA).....6-4, 7-5
- Craig Kirchgessner (WKU) def. Rob Whatsitt (UNA).....6-3, 6-3
- Lance Freeman (WKU) def. Arthur Neme (UNA).....6-1, 6-3
- Robert Whitmer (WKU) def. T.J. Drake (UNA).....7-6, 6-4
- Corey Griffin (UNA) def. Tyler Patner (WKU).....6-4, 2-6, 10-5

**Doubles**

- Arul Selvan/Craig Kirchgessner (WKU) def. Mirko Sommerfield/Rob Whatsitt (UNA).....8-5
- Currie Martin/Lance Freeman (WKU) def. Merlin Witt/T.J. Drake (UNA).....8-4
- Robert Whitmer/Caleb Ball (WKU) def. Arthur Neme/Corey Griffin (UNA).....8-4

**SIU-Edwardsville 4, WKU 0**  
Apr. 16, 2011 • Edwardsville, Ill.

**Singles**

- Paulo Gonzalez (SIUE) def. Craig Kirchgessner (WKU).....6-3, 6-1
- Michael Chamberlain (SIUE) vs. Arul Selvan (WKU).....unfinished
- Devan Faulkenberg (SIUE) vs. Currie Martin (WKU).....unfinished
- Justin Spicer (SIUE) def. Lance Freeman (WKU).....6-3, 6-7, 7-4
- Jacob Tanulanond (SIUE) vs. Robert Whitmer (WKU).....unfinished
- Ryan Vogt (SIUE) def. Tyler Patner (WKU).....6-0, 6-2

**Doubles**

- Paulo Gonzalez/Justin Spicer (SIUE) def. Craig Kirchgessner/Arul Selvan (WKU).....9-7
- Devan Faulkenberg/Jacob Tanulanond (SIUE) def. Tyler Patner/Caleb Ball (WKU).....8-2

**Cumberland University 6, WKU 1**  
Apr. 18, 2011 • Lebanon, Tenn.

**Singles**

- Evan Sanna (CUMB) def. Arul Selvan (WKU).....6-3, 6-4
- Na'im Azhar (CUMB) def. Currie Martin (WKU).....6-2, 6-2
- Pedro Rodrigues (CUMB) def. Craig Kirchgessner (WKU).....6-0, 6-2
- Lance Freeman (WKU) def. Devin Crotzer (CUMB).....6-2, 6-0
- Jeremy Fleming (CUMB) def. Robert Whitmer (WKU).....9-8
- Cristhian Hernandez (CUMB) def. Caleb Ball (WKU).....9-8

**Doubles**

- Jorge Caetano/Pedro Rodrigues (CUMB) def. Arul Selvan/Craig Kirchgessner (WKU).....8-6
- Currie Martin/Lance Freeman (WKU) def. Evan Sanna/Devin Crotzer (CUMB).....9-8
- Jeremy Fleming/Cristhian Hernandez (CUMB) def. Robert Whitmer/Caleb Ball (WKU).....8-1

**Florida Atlantic 4, WKU 0**  
Apr. 20, 2011 • Mobile, Ala.

**Singles**

- #120 Abdelnour, Marc (FAU) vs. Arul Selvan (WKU).....6-3, 4-1, unfinished
- Garibovic, Ervin (FAU) vs. Currie Martin (WKU).....6-4, unfinished
- Vardag, Daniel (FAU) def. Craig Kirchgessner (WKU).....6-2, 6-1
- El Kheshen, Omar (FAU) vs. Lance Freeman (WKU).....6-0, 3-0, unfinished
- Webb, Oliver (FAU) def. Robert Whitmer (WKU).....6-2, 6-1
- Madon, Derek (FAU) def. Caleb Ball (WKU).....6-0, 6-3

**Doubles**

- Abdelnour/Garibovic (FAU) vs. Arul Selvan/Craig Kirchgessner (WKU).....7-4, unfinished
- Wakim/El Kheshen (FAU) def. Lance Freeman/Currie Martin (WKU).....8-4
- Vardag/Madon (FAU) def. Robert Whitmer/Caleb Ball (WKU).....8-0

# Year-By-Year Records

Year	Coach	Record (Pct.)	Tournament Finish
1936-38	E.B. Stansbury	18-3 (.857)	—
		• E.B. Stansbury — 3 Seasons — 18-3 (.857)	
1939	Ted Hornback	7-3 (.700)	—
1940	Ted Hornback	6-2 (.750)	—
1941	Ted Hornback	6-3 (.667)	—
1942	Ted Hornback	6-0 (1.000)	—
1943-45	<i>No Team (World War II)</i>		
1946	Ted Hornback	6-0 (1.000)	—
1947	Dee Gibson	8-1 (.889)	—
		• Dee Gibson — 1 Season — 8-1 (.889)	
1948	Ted Hornback	7-2 (.778)	—
1949	Ted Hornback	3-4 (.429)	OVC Champions
1950	Ted Hornback	10-1 (.909)	OVC Champions
1951	Ted Hornback	5-3 (.625)	3rd, OVC
1952	Ted Hornback	7-2 (.778)	OVC Champions
1953	Ted Hornback	9-1 (.900)	OVC Champions
1954	Ted Hornback	11-1 (.917)	OVC Champions
1955	Ted Hornback	8-1 (.889)	OVC Champions
1956	Ted Hornback	10-1 (.909)	OVC Runners-up
1957	Ted Hornback	9-1 (.900)	OVC Champions
1958	Ted Hornback	8-2 (.800)	OVC Champions
1959	Ted Hornback	7-5 (.583)	5th, OVC
1960	Ted Hornback	11-0 (1.000)	OVC Champions
1961	Ted Hornback	11-0 (1.000)	OVC Champions
1962	Ted Hornback	7-7 (.500)	OVC Runners-up
1963	Ted Hornback	12-1 (.923)	OVC Champions
1964	Ted Hornback	11-4 (.733)	OVC Runners-up
1965	Ted Hornback	9-3 (.750)	OVC Champions
1966	Ted Hornback	14-4 (.778)	OVC Runners-up
1967	Ted Hornback	16-3 (.842)	OVC Runners-up
1968	Ted Hornback	19-1 (.950)	OVC Champions
1969	Ted Hornback	17-1 (.944)	OVC Runners-up
1970	Ted Hornback	17-5 (.773)	OVC Champions
1971	Ted Hornback	19-1 (.950)	OVC Champions
1972	Ted Hornback	15-2 (.882)	OVC Champions
1973	Ted Hornback	17-4 (.810)	OVC Champions
1974	Ted Hornback	20-1 (.952)	OVC Runners-up
1975	Ted Hornback	18-1 (.947)	OVC Champions
1976	Ted Hornback	16-6 (.727)	OVC Champions
		• Ted Hornback — 34 Seasons — 374-76 (.831)	

1977	Ray Rose	10-7 (.588)	OVC Champions
1978	Ray Rose	2-17 (.105)	8th, OVC
1979	Ray Rose	10-9 (.555)	4th, OVC
1980	Ray Rose	13-17 (.433)	4th, OVC
1981	Ray Rose	15-11 (.577)	5th, OVC

**Ray Rose — 5 Seasons — 50-61 (.450)**

1982	Jeff True	5-16 (.238)	4th, OVC
1983	Jeff True	3-11 (.214)	7th, Sun Belt
1984	Jeff True	6-12 (.333)	7th, Sun Belt
1985	Jeff True	13-13 (.500)	4th, Sun Belt
1986	Jeff True	10-16 (.385)	5th, Sun Belt
1987	Jeff True	10-5 (.667)	5th, Sun Belt
1988	Jeff True	8-10 (.444)	7th, Sun Belt
1989	Jeff True	7-9 (.438)	7th, Sun Belt

1990	Scott Vowels	11-8 (.579)	8th, Sun Belt
------	--------------	-------------	---------------

**• Scott Vowels — 1 Season — 11-8 (.579)**

1991	Jody Bingham	10-10 (.500)	8th, Sun Belt
1992	Jody Bingham	10-15 (.400)	7th, Sun Belt
1993	Jody Bingham	11-11 (.500)	5th, Sun Belt
1994	Jody Bingham	10-11 (.476)	5th, Sun Belt

**• Jody Bingham — 4 Seasons — 41-47 (.466)**

1995	Jeff True	11-12 (.478)	4th, Sun Belt
1996	Jeff True	9-11 (.450)	6th, Sun Belt
1997	Jeff True	9-19 (.321)	8th, Sun Belt
1998	Jeff True	10-11 (.476)	8th, Sun Belt
1999	Jeff True	27-3 (.900)	5th, Sun Belt
2000	Jeff True	9-12 (.429)	6th, Sun Belt
2001	Jeff True	8-10 (.444)	8th, Sun Belt
2002	Jeff True	6-15 (.300)	8th, Sun Belt
2003	Jeff True	4-17 (.190)	8th, Sun Belt
2004	Jeff True	8-13 (.381)	8th, Sun Belt
2005	Jeff True	13-10 (.565)	8th, Sun Belt
2006	Jeff True	12-7 (.632)	8th, Sun Belt
2007	Jeff True	9-9 (.500)	8th, Sun Belt
2008	Jeff True	13-5 (.722)	8th, Sun Belt
2009	Jeff True	11-9 (.550)	8th, Sun Belt
2010	Jeff True	12-10 (.545)	7th, Sun Belt
2011	Jeff True	6-12 (.333)	7th, Sun Belt

**• Jeff True — 25 Seasons to Date — 239-277 (.463)**

# Hilltopper Year-By-Year Results

<b>1936-38</b>	
Record: 18-3	
Coach: E.B. Stansbury	
<b>1939</b>	
Record: 7-3	
Coach: Ted Hornback	
<b>1940</b>	
Record: 6-2	
Coach: Ted Hornback	
4/27	at Eastern Ky. ....
4/29	Vanderbilt. ....
5/7	Murray St. ....
5/11	Eastern Ky. ....
5/14	at Murray St. ....
5/18	Berea. ....
<b>1941</b>	
Record: 6-3	
Coach: Ted Hornback	
4/16	Wabash College. ....
4/21	Kentucky. ....
4/25	Evansville. ....
5/2	at Evansville. ....
5/3	Murray St. ....
5/9	at Murray St. ....
5/16	Tennessee Tech. ....
5/31	at Tennessee Tech. ....
<b>1942</b>	
Record: 6-0	
Coach: Ted Hornback	
<b>1943-45</b>	
No Team (World War II)	
<b>1946</b>	
Record: 6-0	
Coach: Ted Hornback	
<b>1947</b>	
Record: 8-1	
Coach: Dee Gibson	
4/24	at U. of South. .... L, 2-5
4/25	at Middle Tenn. .... W, 4-0
4/26	at Tennessee Tech. .... W, 4-3
5/8	at Georgetown (Ky.) ....
5/9	at Centre. .... W, 7-1
5/10	at Berea. .... W, 9-0
5/13	at Louisville. ....
5/16	Xavier. .... W, 7-0
5/20	Louisville. ....
5/29	Centre. .... W, 8-1
<b>1948</b>	
Record: 7-2	
Coach: Ted Hornback	
4/15	Kentucky. ....
4/22	at Georgetown (Ky.) ....
4/23	at Centre. ....
5/6	at Evansville. ....
5/10	Louisville. ....
5/13	Evansville. ....
5/18	Berea. ....
5/24	Centre. ....
5/25	at Louisville. ....
<b>1949</b>	
Record: 3-4	
OVC Champion	
Coach: Ted Hornback	
—	vs. Washington U. .... L, 1-6
—	vs. Middle Tenn. .... W, 6-1
—	vs. Centre. .... W, 5-2
—	vs. Louisville. .... L, 3-4
—	vs. Louisville. .... L, 2-5
—	vs. Centre. .... W, 3-2
<b>1950</b>	
Record: 10-1	
OVC Champions	
Coach: Ted Hornback	
4/15	Kentucky. .... W, 4-3
4/18	Middle Tenn. .... W, 5-2
4/20	at Evansville. .... W, 7-0
4/22	at Tennessee Tech. .... W, 5-2
4/27	at Eastern Ky. .... L, 2-5
4/28	at Marshall. .... W, 7-0
5/4	Evansville. .... W, 7-0
5/11	Centre. .... W, 6-1
5/12	Eastern Ky. .... W, 5-2
5/13	Tennessee Tech. .... W, 4-3
5/19	at Centre. .... W, 5-2
5/27	(1) OVC Tournament ..... 1st
(1) Bowling Green, Ky.	

<b>1951</b>	
Record: 5-3	
3rd, OVC	
Coach: Ted Hornback	
—	vs. Eastern Ky. .... L, 3-4
—	vs. Centre. .... L, 3-4
—	vs. Tennessee Tech. .... W, 7-0
—	vs. Middle Tenn. .... W, 6-0
—	vs. Eastern Ky. .... L, 0-7
—	vs. Tennessee Tech. .... W, 7-0
—	vs. Middle Tenn. .... W, 5-2
—	vs. Centre. .... W, 4-3
<b>1952</b>	
Record: 7-2	
OVC Champions	
Coach: Ted Hornback	
4/8	Evansville. .... W, 7-0
4/22	Middle Tenn. .... W, 5-2
4/25	Tennessee Tech. .... W, 7-0
4/29	at Eastern Ky. .... W, 5-2
5/2	Kentucky. .... L, 3-4
5/6	at Middle Tenn. .... W, 5-2
5/7	Evansville. .... W, 7-0
5/9	at Tennessee Tech. .... W, 5-2
5/15	Centre. .... L, 2-5
5/16	(1) Eastern Ky. .... W, 5-3
(1) OVC Tournament, Bowling Green	
<b>1953</b>	
Record: 9-1	
OVC Champions	
Coach: Ted Hornback	
—	vs. Evansville. .... W, 9-0
—	vs. Middle Tennessee. .... W, 4-3
—	vs. Evansville. .... W, 7-0
—	Centre. .... L, 3-4
—	at Kentucky. .... W, 5-3
—	vs. Middle Tennessee. .... W, 4-3
—	at Centre. .... W, 4-3
—	vs. David Lipscomb. .... W, 5-2
—	vs. Tennessee Tech. .... W, 6-1
—	vs. David Lipscomb. .... W, 7-0
<b>1954</b>	
Record: 11-1	
OVC Champions	
Coach: Ted Hornback	
—	vs. Evansville. .... W, 6-1
—	vs. Middle Tenn. .... W, 7-0
—	vs. Tennessee Tech. .... W, 7-0
—	vs. Eastern Ky. .... W, 6-1
—	vs. David Lipscomb. .... W, 5-2
—	vs. Kentucky. .... W, 5-4
—	vs. David Lipscomb. .... W, 5-2
—	vs. Tennessee Tech. .... L, 1-4
—	vs. Evansville. .... W, 7-0
—	vs. Centre. .... W, 6-1
—	vs. Centre. .... W, 6-0
—	vs. Middle Tenn. .... W, 7-0
<b>1955</b>	
Record: 8-1	
OVC Champions	
Coach: Ted Hornback	
—	vs. Middle Tenn. .... W, 5-0
—	vs. David Lipscomb. .... W, 4-3
—	vs. Evansville. .... W, 5-2
—	vs. Middle Tenn. .... W, 6-1
—	vs. David Lipscomb. .... W, 8-1
—	vs. Tennessee Tech. .... W, 9-0
—	vs. Evansville. .... W, 7-0
—	vs. Kentucky. .... L, 1-6
—	vs. Tennessee Tech. .... W, 8-1
<b>1956</b>	
Record: 10-1	
OVC Runner-Up	
Coach: Ted Hornback	
—	vs. David Lipscomb. .... W, 6-1
—	vs. Ky. Wesleyan. .... W, 5-0
—	vs. Murray St. .... L, 3-4
—	vs. Tennessee Tech. .... W, 6-3
—	vs. Middle Tenn. .... W, 7-1
—	vs. Bellarmine. .... W, 7-0
—	vs. Murray St. .... W, 5-2
—	vs. Ky. Wesleyan. .... W, 5-1
—	vs. David Lipscomb. .... W, 5-2
—	vs. Tennessee Tech. .... W, 7-0
—	vs. Middle Tenn. .... W, 6-1

<b>1957</b>	
Record: 9-1	
OVC Champions	
Coach: Ted Hornback	
<b>1958</b>	
Record: 8-2	
OVC Champions	
Coach: Ted Hornback	
4/11	at Tennessee Tech. .... W, 7-0
4/14	at Bellarmine. .... L, 3-6
4/16	Ky. Wesleyan. .... W, 9-0
4/19	David Lipscomb. .... W, 5-0
4/22	at Middle Tenn. .... W, 8-0
4/25	Murray St. .... L, 3-4
5/3	at Murray St. ....
5/5	at Ky. Wesleyan. .... W, 7-0
5/13	at David Lipscomb. ....
5/15	Middle Tenn. .... W, 9-0
—	vs. Tennessee Tech. .... W, 7-0
<b>1959</b>	
Record: 7-5	
5th, OVC	
Coach: Ted Hornback	
4/7	at Evansville. .... W, 4-3
4/11	Evansville. .... W, 6-1
4/13	David Lipscomb. .... W, 4-3
4/15	at Middle Tenn. .... W, 7-0
4/18	Tennessee Tech. .... L, 3-4
4/25	at Murray St. .... L, 0-7
4/29	at Ky. Wesleyan. .... W, 5-2
5/2	Ky. Wesleyan. .... W, 5-2
5/5	Murray St. .... L, 0-7
5/7	Bellarmine. .... L, 1-6
5/9	at Tennessee Tech. .... L, 2-5
5/12	at David Lipscomb. ....
5/14	at Middle Tenn. .... W, 6-1
<b>1960</b>	
Record: 11-0	
OVC Champions	
Coach: Ted Hornback	
4/5	David Lipscomb. .... W, 7-0
4/13	Middle Tenn. .... W, 7-0
4/22	Murray St. .... W, 6-1
4/23	at David Lipscomb. .... W, 7-0
4/26	Tennessee Tech. .... W, 7-0
4/28	at Evansville. .... W, 6-0
4/30	at Murray St. .... W, 6-1
5/3	Evansville. .... W, 6-0
5/5	at Bellarmine. .... W, 4-3
5/7	Kentucky. .... W, 6-1
5/19	at Middle Tenn. .... W, 7-0
5/20	(1) OVC Tournament ..... 1st
(1) Bowling Green, Ky.	
<b>1961</b>	
Record: 11-0	
OVC Champions	
Coach: Ted Hornback	
4/13	Ky. Wesleyan. .... W, 7-0
4/15	Tennessee Tech. .... W, 7-0
4/18	Louisville. .... W, 7-0
4/19	at Ky. Wesleyan. .... W, 7-0
4/24	Murray St. .... W, 4-3
4/27	Middle Tenn. .... W, 7-0
4/29	at Murray St. .... W, 4-3
5/2	at Louisville. .... W, 5-2
5/6	at Tennessee Tech. .... W, 7-0
5/11	Bellarmine. .... W, 5-2
5/18	at Middle Tenn. .... W, 7-0
5/19	(1) OVC Tournament ..... 1st
(1) Murfreesboro, Tenn.	
<b>1962</b>	
Record: 7-7	
OVC Runner-Up	
Coach: Ted Hornback	
—	vs. Lambuth. .... W, 6-1
—	vs. DePaul. .... L, 2-5
—	vs. Mississippi. .... W, 5-2
—	vs. Eastern Ky. .... W, 5-1
—	vs. Middle Tenn. .... W, 7-0
—	vs. Murray St. .... L, 3-4
—	vs. Bellarmine. .... L, 3-4
—	vs. Tennessee Tech. .... W, 7-0
—	vs. Middle Tenn. .... W, 7-0
—	vs. Louisville. .... L, 2-5
—	vs. Kentucky. .... L, 1-6
—	vs. Murray St. .... L, 3-4
—	vs. Louisville. .... L, 3-4
—	vs. Tennessee Tech. .... W, 7-0

<b>1963</b>	
Record: 12-1	
OVC Champions	
Coach: Ted Hornback	
4/5	at Ky. Wesleyan. .... W, 7-0
4/8	at Middle Tenn. .... W, 9-0
4/13	at Tennessee Tech. .... W, 9-0
4/15	at Austin Peay. .... W, 9-0
4/16	at Union (Tenn.) .... W, 9-0
4/17	at Memphis State. .... L, 3-6
4/18	at Southwestern. .... W, 9-0
4/23	Louisville. .... W, 7-0
4/26	at Murray St. .... W, 5-2
4/29	Ky. Wesleyan. .... W, 9-0
5/3	Tenn. Tech. .... W, 6-1
5/6	Austin Peay. .... W, 9-0
5/14	Middle Tenn. .... W, 7-0
5/17	(1) OVC Tournament ..... 1st
(1) Cookeville, Tenn.	
<b>1964</b>	
Record: 11-4	
OVC Runner-Up	
Coach: Ted Hornback	
4/6	at Austin Peay. .... W, 9-0
4/7	at Union (Tenn.) .... W, 5-0
4/8	at Southwestern. .... L, 4-5
4/9	at Memphis State. .... W, 9-0
4/10	at Vanderbilt. .... L, 0-9
4/14	Tennessee Tech. .... W, 9-0
4/17	Grand Rapids. .... W, 7-0
4/22	Murray St. .... W, 5-4
4/24	at Tennessee Tech. .... W, 9-0
4/25	at Louisville. .... W, 6-3
5/1	Vanderbilt. .... L, 4-5
5/6	Austin Peay. .... W, 9-0
5/7	at Murray St. .... L, 1-8
5/9	Bellarmine. .... W, 7-2
5/12	Louisville. .... W, 8-1
5/15	(1) OVC Tournament ..... 2nd
(1) Bowling Green, Ky.	
<b>1965</b>	
Record: 9-3	
OVC Champions	
Coach: Ted Hornback	
—	at Cincinnati. .... W, 7-2
—	at Xavier. .... W, 9-0
—	at Bellarmine. .... W, 6-1
—	DePaul. .... W, 5-4
—	Vanderbilt. .... W, 9-0
—	at Murray St. .... L, 2-6
—	(1) Middle Tenn. .... W, 7-2
—	(1) Eastern Ky. .... L, 4-5
—	David Lipscomb. .... W, 7-2
—	Murray St. .... L, 3-6
—	at Eastern Ky. .... W, 6-3
—	at Tenn. Tech. .... W, 9-0
—	(2) OVC Tournament ..... 1st
(1) at Murray St.	
(2) Johnson City, Tenn.	
<b>1966</b>	
Record: 14-4	
OVC Runner-Up	
Coach: Ted Hornback	
3/26	Vanderbilt. ....
4/2	Austin Peay. ....
4/5	Murray St. ....
4/9	Wisconsin. ....
4/11	at U. of South. ....
4/12	at Chattanooga. ....
4/13	at Georgia. ....
4/14	at Mercer. ....
4/16	at Austin Peay. ....
4/19	at Vanderbilt. ....
4/22	(1) Murray St. ....
4/23	(1) Eastern Ky. ....
4/23	at Middle Tenn. ....
4/28	Louisville. ....
5/3	Tenn. Tech. ....
5/6	at Louisville. ....
5/10	at David Lipscomb. ....
5/14	Eastern Ky. ....
5/20	(2) OVC Tournament ..... 2nd
(1) at Murfreesboro, Tenn.	
(2) at Richmond, Ky.	
<b>1967</b>	
Record: 16-3	
OVC Runner-Up	
Coach: Ted Hornback	
3/27	DePaul. .... W, 8-1
4/1	Austin Peay. .... W, 9-0
4/4	at David Lipscomb. .... W, 8-1
4/10	at Jacksonville. .... W, 7-2



4/11 at Riverside Club ..... W, 5-4  
 4/12 at J.A.X. Navy ..... W, 6-0  
 4/13 at Georgia Southern ..... W, 9-0  
 4/14 at Mercer College ..... W, 9-0  
 4/15 at U. of South ..... W, 9-0  
 4/22 at Eastern Ky. .... L, 4-5  
 4/23 (2) Middle Tenn. .... W, 7-2  
 4/26 (2) Murray St. .... L, 2-7  
 4/28 at Vanderbilt ..... W, 8-1  
 4/29 at Murray St. .... L, 2-7  
 5/2 Louisville ..... W, 9-0  
 5/4 David Lipscomb ..... W, 9-0  
 5/5 Tenn. Tech ..... W, 9-0  
 5/10 Eastern Ky. .... W, 5-4  
 5/16 at Austin Peay ..... W, 8-1  
 5/19 (3) OVC Tournament ..... 2nd  
 (1) at Jacksonville, Fla.  
 (2) at Richmond, Ky.  
 (3) at Fort Campbell, Ky.

1968

Record: 19-1  
 OVC Champions  
 Coach: Ted Hornback  
 3/29 David Lipscomb ..... W, 9-0  
 4/3 Tenn. Tech ..... —  
 4/7 at Kentucky ..... W, 7-2  
 — vs. Eastern Ky. .... W, 7-2  
 — vs. Tennessee ..... L, 0-7  
 4/13 at Vanderbilt ..... W, 9-0  
 4/14 at Emory ..... W, 9-0  
 4/16 at J.A.X. Navy ..... W, 7-2  
 4/17 at Ocala Club ..... W, 7-2  
 4/18 at Jacksonville Naval ..... W, 9-0  
 4/19 at Georgia Southern ..... W, 9-0  
 4/20 at Mercer ..... W, 9-0  
 4/21 at U. of South ..... W, 9-0  
 4/26 Murray St. .... W, 6-3  
 4/27 Morehead St. .... W, 9-0  
 4/27 Eastern Ky. .... W, 5-1  
 5/1 at Austin Peay ..... W, 9-0  
 5/20 (1) OVC Tournament ..... 1st  
 (1) Johnson City, Tenn.

1969

Record: 17-1  
 OVC Runner-Up  
 Coach: Ted Hornback

1970

Record: 17-5  
 OVC Champions  
 Coach: Ted Hornback  
 — vs. Miami ..... W, 9-0  
 — vs. St. John's ..... W, 9-0  
 — vs. Louisville ..... W, 7-0  
 — vs. Wisconsin ..... L, 4-5  
 — vs. Cincinnati ..... W, 9-0  
 — vs. Kentucky ..... L, 3-6  
 — vs. Eastern Ky. .... W, 7-2  
 — vs. Emory ..... W, 9-0  
 — vs. Presbyterian ..... L, 3-5  
 — vs. Furman ..... W, 7-2  
 — vs. South Carolina ..... W, 6-2  
 — vs. Tennessee ..... W, 9-0  
 — vs. U. of the South ..... W, 9-0  
 — vs. Kentucky ..... L, 2-7  
 — vs. Western Mich. .... W, 8-1  
 — vs. Murray St. .... W, 7-2  
 — vs. Morehead St. .... W, 8-1  
 — vs. Eastern Ky. .... W, 7-2  
 — vs. Austin Peay ..... W, 9-0  
 — vs. Middle Tenn. .... L, 4-5  
 — vs. East Tenn. St. .... W, 7-2  
 — vs. Tenn. Tech ..... W, 6-3

1971

Record: 19-1  
 OVC Champions  
 Coach: Ted Hornback  
 3/13 at U. of South ..... W, 9-0  
 3/15 at Erskine ..... W, 9-0  
 3/16 at Furman ..... W, 7-2  
 3/17 at South Carolina ..... W, 6-3  
 3/18 at Presbyterian ..... W, 6-3  
 4/2 at Eastern Ky. .... W, 7-2  
 4/3 at Louisville ..... W, 8-1  
 4/3 at Kentucky ..... W, 7-2  
 4/5 Wisconsin ..... W, 9-0  
 4/10 Austin Peay ..... W, 8-1  
 4/10 Edinboro State ..... W, 9-0  
 4/13 Kentucky ..... W, 9-0  
 4/16 at Tenn. Tech ..... L, 4-5  
 4/17 East Tenn. St. .... W, 9-0  
 4/21 Western Michigan ..... W, 9-0  
 4/23 at Eastern Ky. .... W, 8-1  
 4/24 at Morehead St. .... W, 9-0  
 4/27 at Murray St. .... W, 5-4  
 5/7 Middle Tenn. .... W, 7-2  
 5/8 Austin Peay ..... W, 6-3

1972

Record: 15-2  
 OVC Champions  
 Coach: Ted Hornback  
 3/10 at U. of South ..... W, 9-0  
 3/11 at Clemson ..... L, 3-6  
 3/13 at Furman ..... W, 9-0  
 3/14 at Erskine ..... W, 9-0  
 3/15 at Citadel ..... W, 9-0  
 3/17 at Tennessee ..... L, 3-6  
 3/29 Hamline ..... W, 9-0  
 3/31 at Kentucky ..... W, 6-3  
 4/5 Valparaiso ..... W, 9-0  
 4/14 at Eastern Ky. .... W, 7-2  
 4/15 at Morehead St. .... W, 9-0  
 4/21 at East Tenn. St. .... W, 8-1  
 4/22 at Tenn. Tech ..... W, 6-3  
 4/25 Kentucky ..... W, 6-3  
 4/27 at Middle Tenn. .... W, 9-0  
 4/29 at Austin Peay ..... W, 7-2  
 5/5 Murray St. .... W, 6-3

1973

Record: 17-4  
 OVC Champions  
 Coach: Ted Hornback  
 3/8 at UT-Chattanooga ..... W, 9-0  
 3/9 at Oglethorpe ..... W, 9-0  
 — vs. Clemson ..... L, 4-5  
 3/12 at Charleston ..... W, 9-0  
 — vs. South Carolina ..... L, 2-7  
 3/14 at Citadel ..... W, 9-0  
 — vs. Presbyterian ..... W, 5-4  
 3/21 Ohio State ..... W, 8-1  
 3/23 (1) Cincinnati ..... L, 3-5  
 3/24 (1) Murray St. .... W, 6-3  
 3/28 Kentucky ..... W, 6-3  
 4/6 Middle Tenn. .... W, 7-2  
 4/13 at Morehead St. .... W, 9-0  
 4/14 (2) Eastern Ky. .... W, 8-1  
 4/20 Tenn. Tech ..... W, 9-0  
 4/21 East Tenn. St. .... W, 9-0  
 4/28 (3) Missouri ..... W, 7-2  
 4/29 Kentucky ..... W, 5-4  
 5/1 Austin Peay ..... L, 4-5  
 5/14 at Murray St. .... W, 6-3  
 5/17 (4) OVC Tournament ..... 1st  
 (1) Murfreesboro, Tenn.  
 (2) Morehead, Ky.  
 (3) Lexington, Ky.  
 (4) Murray, Ky.

1974

Record: 20-1  
 OVC Runner-Up  
 Coach: Ted Hornback  
 — UT-Chattanooga ..... W, 6-3  
 3/8 at West Georgia State ..... W, 9-0  
 3/9 at Clemson ..... L, 4-5  
 3/11 at Charleston ..... W, 9-0  
 3/12 at The Citadel ..... W, 9-0  
 3/13 at South Carolina ..... W, 7-2  
 3/14 at Presbyterian ..... W, 7-2  
 3/15 at Furman ..... W, 6-3  
 3/23 (1) Miami ..... W, 6-3  
 3/29 Bellarmine ..... W, 9-0  
 4/2 Kentucky ..... W, 6-3  
 4/5 Austin Peay ..... W, 5-4  
 4/6 at Middle Tenn. .... W, 5-4  
 4/12 Eastern Ky. .... W, 8-1  
 4/13 Morehead St. .... W, 9-0  
 4/19 at Tenn. Tech ..... W, 8-1  
 4/20 East Tenn. St. .... W, 9-0  
 4/26 at Kentucky ..... W, 7-2  
 4/27 Toledo ..... W, 9-0  
 4/29 at Vanderbilt ..... W, 8-1  
 5/13 at Murray St. .... W, 7-2  
 5/16 (2) OVC Tournament ..... 2nd  
 (1) Murfreesboro, Tenn.  
 (2) Murray, Ky.

1975

Record: 18-1  
 OVC Champions  
 Coach: Ted Hornback  
 3/6 at UT-Chattanooga ..... L, 2-7  
 3/8 at Clemson ..... W, 5-4  
 3/10 at Charleston ..... W, 9-0  
 3/11 at Charleston ..... W, 9-0  
 3/12 at South Carolina St. .... W, 9-0  
 3/14 at Anderson ..... W, 9-0  
 3/18 Vanderbilt ..... W, 9-0  
 3/22 Illinois ..... W, 9-0  
 4/4 Middle Tenn. .... W, 6-3  
 4/5 Austin Peay ..... W, 6-3  
 4/11 (1) Morehead St. .... W, 8-1  
 4/12 at Eastern Ky. .... W, 9-0  
 4/13 at Kentucky ..... W, 6-3  
 4/18 (2) East Tenn. St. .... W, 9-0

(2) Tennessee Tech ..... W, 9-0  
 4/22 Murray St. .... W, 9-0  
 4/26 Ohio St. .... W, 6-3  
 4/27 Minnesota ..... W, 5-4  
 5/13 Louisville Club ..... W, 6-3  
 5/16 (3) OVC Tournament ..... 1st  
 (1) Richmond, Ky.  
 (2) Murray, Ky.  
 (3) Richmond, Ky.

1976

Record: 16-6  
 OVC Champions  
 Coach: Ted Hornback  
 3/8 at Indiana-Pro Stars ..... W, 7-2  
 3/9 at Cincinnati ..... W, 6-3  
 3/10 at Kentucky ..... L, 1-6  
 3/11 at Indiana ..... W, 5-4  
 3/12 at Louisville Club ..... L, 3-4  
 3/15 at Belmont ..... W, 9-0  
 3/20 at Nashville Club ..... W, 7-2  
 3/23 Youngstown St. .... W, 9-0  
 4/2 Eastern Ky. .... L, 3-4  
 4/3 at Ky. Wesleyan ..... W, 8-0  
 4/6 Murray St. .... W, 6-3  
 4/7 Kentucky ..... L, 3-6  
 4/9 Tenn. Tech ..... W, 7-0  
 4/10 Middle Tenn. .... L, 3-4  
 4/14 at Austin Peay ..... W, 5-2  
 4/16 at Louisville ..... W, 5-2  
 4/17 at Murray St. .... L, 3-4  
 4/19 Ky. Wesleyan ..... W, 7-0  
 4/20 Lewis ..... W, 7-0  
 4/27 at Middle Tenn. .... W, 5-2  
 4/29 Belmont ..... W, 7-0  
 4/30 Austin Peay ..... W, 7-0  
 5/10 (1) OVC Tournament ..... 1st  
 (1) Clarksville, Tenn.

1977

Record: 10-7  
 OVC Champions  
 Coach: Ray Rose  
 2/22 at Vanderbilt ..... L, 2-7  
 3/12 (1) Yale ..... L, 4-5  
 3/14 at South Florida ..... L, 0-9  
 3/15 at Seminole JC ..... L, 4-5  
 3/16 at Fla. Southern ..... W, 8-1  
 3/17 at Jacksonville ..... L, 4-5  
 3/19 at UT-Chattanooga ..... L, 4-5  
 3/22 Vanderbilt ..... L, 3-6  
 3/26 Cincinnati ..... W, 5-4  
 3/31 at Eastern Ky. .... W, 6-3  
 4/1 at Kentucky ..... W, 5-4  
 4/8 Louisville ..... W, 7-2  
 4/9 at Middle Tenn. .... W, 6-3  
 4/13 Austin Peay ..... W, 6-3  
 4/16 Murray St. .... W, 7-2  
 4/26 at Louisville ..... W, 8-1  
 4/29 Morehead St. .... W, 7-2  
 5/6 (2) OVC Tournament ..... 1st  
 (1) St. Augustine, Fla.  
 (2) Bowling Green, Ky.

1978

Record: 2-17  
 OVC, 8th  
 Coach: Ray Rose  
 3/6Belmont ..... W, 9-0  
 3/12(1) Jefferson St. JC ..... L, 1-8  
 3/15at Central Fla. CC ..... L, 1-8  
 3/16at Seminole CC ..... L, 0-9  
 3/18at Florida Tech ..... L, 0-9  
 3/24Austin Peay ..... L, 4-5  
 3/28at Middle Tenn. .... L, 0-9  
 4/1at Morehead St. .... L, 2-7  
 4/7Murray St. .... L, 4-5  
 4/8Middle Tenn. .... L, 2-7  
 4/11Louisville ..... L, 2-7  
 4/12at Austin Peay ..... L, 3-6  
 4/15at Murray St. .... L, 2-7  
 4/20Kentucky ..... L, 2-7  
 —vs. Appalachian St. .... L, 2-7  
 —vs. East Tenn. St. .... L, 1-8  
 4/28at Kentucky ..... L, 0-9  
 4/29at Cincinnati ..... L, 3-6  
 5/2Evansville ..... W, 9-0  
 5/5(2) OVC Tournament ..... 8th  
 (1) Altamonte Springs, Fla.  
 (2) Murfreesboro, Tenn.

1979

Record: 10-9  
 OVC, 4th  
 Coach: Ray Rose  
 3/11 (1) Tufts ..... W, 8-1  
 3/13 (1) Haverford ..... W, 9-0  
 3/14 at Central Fla. .... W, 7-2  
 3/15 at Seminole CC ..... L, 4-5  
 3/16 at Flagler ..... L, 3-6

3/17 at Florida St. .... L, 0-9  
 3/27 Morehead St. .... W, 5-4  
 3/30 (2) East Tenn. St. .... L, 0-9  
 3/31 at Eastern Ky. .... W, 9-0  
 4/1 (2) Akron ..... W, 7-2  
 4/9 at Middle Tenn. .... L, 2-7  
 4/11 Austin Peay ..... W, 6-3  
 4/14 Murray St. .... L, 2-7  
 4/19 Kentucky ..... W, 6-3  
 4/20 (3) Tenn. Tech ..... W, 9-0  
 4/25 at Austin Peay ..... L, 4-5  
 4/26 Eastern Ky. .... W, 7-2  
 5/5 at Kentucky ..... L, 3-6  
 5/11 Middle Tenn. .... L, 3-6  
 5/14 (4) OVC Tournament ..... 4th  
 (1) Altamonte Springs, Fla.  
 (2) Richmond, Ky.  
 (3) Murray, Ky.  
 (4) Cookeville, Tenn.

1980

Record: 13-17  
 OVC, 4th  
 Coach: Ray Rose  
 9/28 Ill.-Chicago Circle ..... W, 9-0  
 3/15 (1) Miami (Ohio) ..... L, 0-9  
 3/18 at Rollins College ..... L, 3-6  
 3/19 at Daytona Beach CC ..... L, 4-5  
 3/21 at Seminole CC ..... L, 4-5  
 3/22 at Flagler ..... L, 2-7  
 3/23 at Gainesville CC ..... L, 4-5  
 3/29 at Eastern Ky. .... L, 4-5  
 3/29 (2) Cincinnati ..... W, 6-3  
 4/1 Illinois ..... W, 5-4  
 4/4 (3) Cincinnati ..... W, 7-2  
 4/5 at Indiana State ..... L, 4-5  
 4/5 (3) Bowling Green ..... W, 8-1  
 4/7 Middle Tenn. .... L, 3-6  
 4/9 at Austin Peay ..... L, 4-5  
 4/10 Evansville ..... W, 9-0  
 4/11 (4) UT-Martin ..... W, 9-0  
 4/11 (4) Tenn. Tech ..... W, 9-0  
 4/12 at Murray St. .... L, 3-6  
 4/15 ISU-Evansville ..... W, 9-0  
 4/16 Murray St. .... L, 3-6  
 4/19 at Morehead St. .... L, 2-7  
 4/20 at Kentucky ..... L, 2-7  
 4/22 at Middle Tenn. .... L, 3-6  
 4/24 Eastern Ky. .... W, 6-3  
 4/26 (5) Indiana St. .... L, 3-6  
 4/27 at Southern Ill. .... L, 4-5  
 4/30 Brescia ..... W, 9-0  
 5-3 Austin Peay ..... W, 5-4  
 5/6 at Evansville ..... W, 7-2  
 5/12 (6) OVC Tournament ..... 4th  
 (1) Knoxville, Tenn.  
 (2) Richmond, Ky.  
 (3) Terre Haute, Ind.  
 (4) Murray, Ky.  
 (5) Carbondale, Ill.  
 (6) Morehead, Ky.

1981

Record: 15-11  
 OVC, 5th  
 Coach: Ray Rose  
 2/20 at East Tenn. St. .... L, 2-7  
 2/21 (1) Carson Newman ..... W, 5-2  
 2/21 (1) Appalachian St. .... L, 1-6  
 3/6 (2) North Alabama ..... W, 7-2  
 3/6 (2) David Lipscomb ..... W, 8-1  
 3/7 at UT-Martin ..... W, 8-1  
 3/20 Hope ..... W, 8-1  
 3/21 at Kentucky ..... L, 1-8  
 3/23 Michigan St. .... L, 3-6  
 3/26 Cincinnati ..... W, 8-1  
 3/27 (3) Austin Peay ..... L, 2-7  
 3/28 at Murray St. .... L, 0-9  
 3/28 (3) Youngstown St. .... W, 8-1  
 4/2 Indiana St. .... W, 5-4  
 4/3 Tenn. Tech ..... W, 9-0  
 4/4 Eastern Ky. .... W, 6-3  
 4/11 Murray St. .... L, 2-7  
 4/13 at Louisville ..... W, 6-3  
 4/16 Evansville ..... W, 5-3  
 4/17 at Middle Tenn. .... L, 4-5  
 4/18 (4) UAB ..... L, 3-6  
 4/18 (4) Austin Peay ..... L, 2-7  
 4/23 Louisville ..... W, 7-2  
 4/24 UAB ..... L, 0-9  
 4/25 Morehead St. .... W, 5-4  
 4/28 at Evansville ..... W, 7-2  
 5-1 (5) OVC Tournament ..... 5th  
 (1) Johnson City, Tenn.  
 (2) Martin, Tenn.  
 (3) Murray, Ky.  
 (4) Murfreesboro, Tenn.  
 (5) Murray, Ky.

# Year-By-Year Results

## 1982

Record: 5-16  
Coach: Jeff True  
OVC, 4th

3/5	North Alabama	W, 9-0
3/6	Southeast Missouri	L, 4-5
3/20	at Murray St.	L, 1-8
3/22	Indiana	L, 3-6
3/23	Michigan St.	L, 4-5
3/27	Louisville	W, 6-3
3/27	IUPUI	W, 9-0
4/2	(1) Middle Tenn.	L, 1-8
4/3	(1) Murray St.	L, 1-8
4/3	at Eastern Ky.	L, 2-7
4/4	at Kentucky	L, 1-8
4/9	(2) Morehead St.	L, 1-8
4/10	Tennessee Tech.	W, 9-0
4/10	at Austin Peay	L, 0-9
4/13	at Louisville	W, 7-2
4/19	Evansville	L, 4-5
4/21	Murray St.	L, 2-7
4/22	Austin Peay	L, 2-7
4/23	at Middle Tenn.	L, 2-7
4/27	at Evansville	L, 3-6
4/28	Kentucky	L, 2-7
4/30	(3) OVC Tournament	4th

- (1) Richmond, Ky.
- (2) Clarksville, Tenn.
- (3) Richmond, Ky.

## 1983

Record: 3-11  
Sun Belt, 7th  
Coach: Jeff True

2/11	at Murray St.	L, 1-8
3/8	at North Alabama	W, 9-0
3/9	at South Alabama	L, 0-9
3/13	at UAB	L, 2-7
3/15	at Middle Tenn.	L, 4-5
3/16	at Murray St.	L, 0-9
3/23	Michigan State	W, 5-4
3/24	Louisville	W, 6-3
3/29	at Austin Peay	L, 3-6
4/6	Middle Tenn.	L, 3-6
4/9	(1) Mississippi	L, 2-5
4/9	at Kentucky	L, 1-5
4/10	(1) Hampton Institute	L, 3-5
4/15	(2) SBC Tournament	7th
4/25	at Louisville	L, 2-7
(1)	Lexington, Ky.	
(2)	Charlotte, N.C.	

## 1984

Record: 6-12  
Sun Belt, 7th  
Coach: Jeff True

1/21	at Louisville	W, 5-4
1/22	(1) Kentucky	L, 0-9
3/4	West Virginia	L, 1-8
3/7	at Central Fla.	L, 4-5
3/8	at South Fla.	L, 2-7
3/9	(2) VCU	L, 4-5
3/9	at Flagler College	L, 2-7
3/10	at Jacksonville	L, 0-9
3/16	Tennessee St.	W, 9-0
3/22	at Trevecca	W, 6-3
3/23	(3) Memphis St.	L, 0-9
3/23	(3) UT-Martin	L, 4-5
4/4	at Austin Peay	W, 5-4
4/6	(4) Ohio	W, 5-4
4/6	at Kentucky	L, 2-7
4/7	Hampton Institute	L, 0-9
4/10	Louisville	L, 2-7
4/14	Trevecca	W, 7-2
4/20	(5) SBC Tournament	7th
(1)	Louisville, Ky.	
(2)	St. Augustine, Fla.	
(3)	Murray, Ky.	
(4)	Lexington, Ky.	
(5)	Norfolk, Va.	

## 1985

Record: 13-13  
Sun Belt, 4th  
Coach: Jeff True

3/2	at Louisville	L, 2-7
3/10	at UAB	L, 1-7
3/11	at Flagler	L, 2-7
3/12	(1) BGSU	W, 6-3
3/12	at Jacksonville	L, 3-6
3/13	(2) David Lipscomb	W, 5-4
3/15	(1) VCU	L, 3-6
3/15	at Sinclair JC.	W, 9-0
3/22	(3) UT-Martin	L, 4-5
3/22	(3) North Alabama	L, 3-6
3/23	at Murray St.	L, 0-9
3/23	(3) Indiana St.	W, 7-2
3/25	at Middle Tenn.	L, 2-7
3/29	at Austin Peay	W, 5-4
3/31	Murray St.	L, 2-7

4/1	at Trevecca	W, 7-2
4/3	at Evansville	W, 5-4
4/5	at Kentucky	L, 0-6

## SBC, 7th

Coach: Jeff True

2/26	(1) UAB	L, 1-5
2/26	at Murray St.	L, 2-5
3/5	at Jefferson St.	L, 2-7
3/5	at UAB	L, 2-7
3/8	Western Michigan	W, 5-4
3/9	Harding	W, 5-2
3/16	at Middle Tenn.	L, 1-7
3/20	at Murray St.	L, 4-5
3/24	at Austin Peay	L, 4-5
3/26	(2) Cincinnati	W, 8-1
3/26	at Evansville	L, 4-5
3/27	(2) Bradley	W, 8-1
4/5	at Bellarmine	W, 8-1
4/5	at Louisville	W, 8-0
4/7	Middle Tenn.	L, 4-5
4/7	Trevecca	L, 3-6
4/10	Bellarmine	W, 9-0
4/12	Louisville	W, 7-2
4/15	(3) SBC Tournament	7th

- (1) Murray, Ky.
- (2) Evansville, Ind.
- (3) Norfolk, Va.

## 1989

Record: 7-9  
SBC, 7th  
Coach: Jeff True

2/16	Campbellsville	W, 9-0
2/17	David Lipscomb	W, 8-1
2/25	at Evansville	W, 6-3
3/16	at Middle Tenn.	L, 0-9
3/22	Ala.-Huntsville	W, 8-1
3/23	at Austin Peay	L, 3-6
3/24	(1) UAB	L, 0-9
3/25	(1) Eastern Ky.	W, 6-3
3/25	(1) Memphis St.	L, 1-5
3/26	at Murray St.	L, 0-6
4/2	Austin Peay	L, 1-5
—	vs. Trevecca	L, 3-6
4/6	vs. Middle Tenn.	L, 1-6
—	vs. Eastern Ky.	W, 5-4
4-9	vs. Louisville	L, 1-5
—	vs. Bellarmine	W, 5-1
4/14	(2) SBC Tournament	7th
(1)	Murray, Ky.	
(2)	Tampa, Fla.	

## 1990

Record: 11-8  
SBC, 8th  
Coach: Scott Vowels

2/23	North Alabama	W, 6-3
3/4	at Belmont	L, 1-8
3/5	at Kentucky	L, 0-6
3/6	Trevecca	W, 6-0
3/8	Thomas Moore	W, 9-0
3/11	Louisville	L, 1-8
3/18	(1) Emory	W, 7-2
3/19	(1) Rutgers	L, 1-8
3/19	at Jacksonville	L, 1-5
3/20	Concordia	L, 4-5
3/25	Bowling Green St.	L, 2-7
3/30	at UT-Martin	L, 3-5
4/8	at Trevecca	W, 6-0
4/10	Belmont	W, 6-0
4/12	(2) SBC Tournament	8th
4/15	at Austin Peay	L, 3-6
4/16	at Bellarmine	W, 7-2
4/16	at Louisville	L, 0-9
4/18	at Tennessee St.	W, 9-0
4/19	Hanover	W, 5-4
4/20	Evansville	W, 6-0
(1)	Jacksonville, Fla.	
(2)	Richmond, Va.	

## 1992

Record: 10-15  
SBC, 7th  
Coach: Jody Bingham

2/29	Tennessee St.	W, 9-0
3/3	Lake Superior St.	W, 9-0
3/4	at Transylvania	W, 8-1
3/5	(1) Morehead St.	L, 4-5
3/5	at Kentucky	L, 1-5
3/8	at Bellarmine	W, 6-2
3/8	at Louisville	L, 0-9
3/14	at Lamar	W, 7-2
3/16	(2) Cornell	L, 1-8
3/19	(2) Tex.-San Antonio	L, 0-6

3/19	at San Jacinto JC.	L, 4-5
3/24	Evansville	W, 6-3
3/26	(3) UT-Martin	L, 4-5
3/28	(3) Troy St.	L, 1-5
3/28	at North Alabama	L, 3-6
4/2	at Austin Peay	L, 4-5
4/5	at Belmont	W, 5-1
4/5	Tenn. Tech	L, 2-7
4/10	Kentucky St.	W, 9-0
4/11	Lincoln Memorial	W, 6-0
4/12	Emory	L, 1-5
4/18	Morehead St.	L, 3-4
4/23	(4) S.W. Louisiana	L, 0-6
4/24	(4) Jacksonville	L, 1-5
4/25	(4) Lamar	W, 5-4
(1)	Lexington, Ky.	
(2)	Beaumont, Texas	
(3)	Florence, Ala.	
(4)	SBC Tournament; Little Rock, Ark.	

## 1993

Record: 11-11  
SBC, 5th  
Coach: Jody Bingham

10/21	Evansville	W, 8-1
2/5	at Bellarmine	W, 9-0
3/1	at David Lipscomb	W, 9-0
3/2	at Tenn. Tech	L, 3-6
3/7	at Kentucky	L, 0-6
3/7	at Transylvania	W, 8-1
3/8	Brescia	W, 9-0
3/9	Belmont	W, 7-2
3/13	(1) Texas-Pan Am	L, 0-6
3/14	at Texas Southern	W, 5-4
3/17	at S.E. Louisiana	L, 2-7
3/19	at S. Mississippi	L, 0-9
3/26	at Austin Peay	L, 1-8
4/3	at Louisville	L, 1-8
4/4	Morehead St.	W, 6-3
4/11	Kentucky St.	W, 9-0
4/12	UT-Chattanooga	L, 1-5
4/17	Eastern Ky.	L, 2-7
4/18	at Tennessee St.	W, 9-0
4/22	(2) Texas-Pan Am	L, 0-5
4/23	(2) Lamar	L, 4-5
4/24	(2) Jacksonville	W, 5-0
(1)	Houston, Texas	
(2)	SBC Tournament; Mobile, Ala.	

## 1994

Record: 10-11  
SBC, 5th  
Coach: Jody Bingham

1/28	at Eastern Ky.	L, 1-6
1/29	(1) Evansville	L, 1-6
1/29	(1) SIU-Edwardsville	L, 2-5
3/3	at Austin Peay	L, 0-6
3/4	David Lipscomb	W, 6-1
3/7	at Kentucky	L, 0-6
3/20	Kentucky St.	W, 6-1
3/23	Tenn. Tech	L, 3-4
3/24	at Evansville	L, 1-6
3/26	Transylvania	W, 9-0
3/28	Tennessee St.	W, 7-0
4/1	Bellarmine	W, 9-0
4/8	at Belmont	W, 8-1
4/9	at UT-Chattanooga	L, 2-5
4/9	at Chattanooga St.	W, 9-0
4/10	(2) Morehead St.	L, 2-4
4/13	Ky. Wesleyan	W, 9-0
4/16	North Alabama	L, 2-5
4/21	(3) S.W. Louisiana	L, 1-6
4/22	(3) Lamar	W, 6-1
4/23	(3) Texas-Pan Am	W, 4-3
(1)	Richmond, Ky.	
(2)	Murfreesboro, Tenn.	
(3)	SBC Tournament; Little Rock, Ark.	

## 1995

Record: 11-12  
SBC, 4th  
Coach: Jeff True

1/27	at Eastern Ky.	W, 4-3
1/27	(1) SIU-Edwardsville	L, 2-5
1/28	(1) Morehead St.	W, 4-3
1/28	at Transylvania	W, 7-0
1/29	at Kentucky	L, 1-5
2/25	at Tennessee St.	W, 7-0
2/25	at David Lipscomb	W, 6-3
3/17	Evansville	L, 0-7
3/19	at Austin Peay	L, 3-4
3/25	at Murray St.	L, 0-7
3/25	(2) Memphis St.	L, 2-4
4/1	at UT-Martin	W, 4-3
4/2	(3) Freed-Hardeman	W, 5-2
4/6	at Louisville	L, 2-5
4/7	Austin Peay	L, 3-4
4/8	(4) Charleston	W, 7-0
4/9	at Morehead St.	L, 3-4
4/10	Kentucky St.	W, 7-0

4/14	at Butler	L, 3-4
4/15	at IUPUI	W, 7-0
4/20	(5) Texas-Pan Am	W, 4-3
4/21	(5) South Alabama	L, 0-7
4/22	(5) S.W. Louisiana	L, 0-5
(1)	Richmond, Ky.	
(2)	Murray, Ky.	
(3)	Martin, Tenn.	
(4)	Morehead, Ky.	
(5)	SBC Tournament; Lafayette, La.	

## 1996

Record: 9-11  
SBC, 6th  
Coach: Jeff True

1/21	at Kentucky	L, 3-4
1/27	(1) Wright St.	W, 7-0
1/27	(1) Morehead St.	W, 5-2
1/28	at Eastern Ky.	W, 4-3
2/10	UT-Martin	L, 1-6
2/11	Evansville	L, 3-4
2/24	Tennessee St.	W, 7-0
2/25	Kentucky St.	W, 7-0
3/10	Belleville Area	W, 7-0
3/23	at Ark.-Little Rock	L, 0-6
3/24	at Harding	L, 1-6
3/24	at UT-Martin	L, 1-6
3/31	at Austin Peay	W, 4-0
4/6	at Louisville	L, 0-7
4/6	(2) Morehead St.	L, 2-5
4/11	Evansville	W, 4-3
4/14	North Alabama	L, 2-5
4/18	(3) New Orleans	L, 1-4
4/19	(3) Jacksonville	W, 4-3
4/20	(3) Texas-Pan Am	L, 1-4
(1)	Richmond, Ky.	
(2)	Louisville, Ky.	
(3)	SBC Tournament; Mobile, Ala.	

## 1997

Record: 9-19  
SBC, 8th  
Coach: Jeff True

1/25	(1) Murray St.	W, 4-2
1/25	(1) Wright St.	L, 3-4
1/25	at Eastern Ky.	W, 7-0
2/1	at Kentucky	L, 1-5
2/1	(2) Georgetown (Ky.)	W, 4-0
2/8	at Bellarmine	W, 6-1
2/16	(3) Troy St.	L, 0-7
2/22	UT-Martin	L, 2-5
2/28	at So. Indiana	W, 5-4
3/13	Wayne St.	W, 7-0
3/16	(4) Ala.-Huntsville	W, 6-1
3/16	at North Alabama	L, 4-5
3/18	at So. Colorado	L, 4-5
3/19	at Air Force	L, 0-7
3/20	(5) Cornell	L, 0-7
3/20	(5) U.S. International	L, 3-4
3/21	at Loyola Marymount	L, 1-6
3/22	(6) California Baptist	L, 3-4
3/22	(6) Azusa Pacific	L, 0-7
3/27	Austin Peay	L, 2-5
3/29	at Louisville	L, 0-7
3/30	Morehead St.	L, 1-6
4/7	Murray St.	W, 4-3
4/8	So. Indiana	W, 7-0
4/13	at Murray St.	L, 2-5
4/17	(7) So. Alabama	L, 0-4
4/18	(7) Texas-Pan Am	L, 2-4
4/18	(7) Jacksonville	L, 2-5
(1)	Richmond, Ky.	
(2)	Lexington, Ky.	
(3)	Clarksville, Tenn.	
(4)	Florence, Ala.	
(5)	San Diego, Calif.	
(6)	Los Angeles, Calif.	
(7)	SBC Tournament; Mobile, Ala.	

## 1998

Record: 10-11  
SBC, 8th  
Coach: Jeff True

1/30at	Bellarmine	W, 8-1
1/31(1)	UNC-Asheville	L, 1-6
1/31(1)	Wright St.	W, 5-2
2/1at	Eastern Ky.	L, 2-5
2/7at	Austin Peay	L, 1-6
2/21at	So. Indiana	W, 6-3
2/28at	Louisville	L, 0-7
3/12(2)	N. Kentucky	W, 7-0
3/15(2)	David Lipscomb	L, 3-4
3/16(2)	Cornell	L, 1-6
3/17(2)	Principia	W, 5-1
3/18(2)	FDU	W, 7-0

4/10 at Murray St. .... L, 2-5  
 4/11 Belmont..... W, 7-0  
 4/13 Tennessee St. .... W, 5-1  
 4/17 (3) Ark.-Little Rock ..... L, 0-4  
 (1) Richmond, Ky.  
 (2) Hilton Head, S.C.  
 (3) SBC Tournament; Mobile, Ala.

**1999**

Record: 27-3  
 SBC, 5th  
 Coach: Jeff True

10/24 (1) Wright St. .... W, 4-1  
 10/24 (1) Eastern Illinois ..... W, 6-1  
 10/25 at Austin Peay ..... W, 5-2  
 1/23 at Louisville ..... L, 2-5  
 1/23 at Bellarmine ..... W, 8-0  
 1/30 (2) Morehead St. .... W, 7-0  
 1/30 (2) Wright St. .... W, 5-1  
 1/31 at Eastern Ky. .... W, 6-1  
 2/5 at So. Indiana ..... W, 4-3  
 3/6 Belmont..... W, 4-2  
 3/11 N. Kentucky ..... W, 7-0  
 3/15 (3) Rhode Island ..... W, 7-0  
 3/15 (3) Wheaton ..... W, 7-0  
 3/16 (3) George Mason ..... W, 7-0  
 3/17 (3) Eastern Illinois ..... W, 7-0  
 3/17 (3) Olivet Nazarene ..... W, 7-0  
 3/18 (3) Bradley ..... W, 7-0  
 3/19 (3) Eastern Michigan ..... W, 5-1  
 3/24 Tennessee St. .... W, 7-0  
 3/27 Evansville ..... W, 7-0  
 3/30 David Lipscomb ..... W, 7-0  
 4/3 at Tennessee St. .... W, 7-0  
 4/3 at Cumberland ..... W, 7-0  
 4/4 Murray St. .... W, 4-3  
 4/7 So. Indiana ..... W, 7-0  
 4/10 at Belmont..... W, 5-2  
 4/11 Austin Peay ..... W, 7-0  
 4/12 at Murray St. .... L, 2-5  
 4/15 (4) Ark.-Little Rock ..... L, 0-4  
 4/16 (4) New Orleans ..... W, 4-3  
 (1) Richmond, Ky.  
 (2) Richmond, Ky.  
 (3) Hilton Head, S.C.  
 (4) SBC Tournament; Mobile, Ala.

**2000**

Record: 9-12  
 SBC, 6th  
 Coach: Jeff True

1/26 at Kentucky ..... L, 2-5  
 1/29 (1) Wright St. .... L, 3-4  
 1/29 (1) Morehead St. .... L, 2-5  
 1/30 at Eastern Ky. .... W, 7-0  
 2/6 at Memphis ..... L, 1-6  
 2/12 Belmont..... W, 4-3  
 2/13 at Bellarmine ..... W, 7-0  
 2/19 (2) Carson Newman ..... W, 7-0  
 2/19 (2) So. Illinois ..... W, 4-3  
 2/20 (2) Murray St. .... W, 4-3  
 2/20 at Austin Peay ..... L, 2-5  
 2/27 at Louisville ..... L, 0-7  
 3/4 Tennessee St. .... W, 7-0  
 3/23 Austin Peay ..... L, 3-4  
 3/24 at Tennessee St. .... W, 7-0  
 3/30 at Vanderbilt ..... L, 1-7  
 4/1 at Belmont..... L, 3-4  
 4/6 at So. Indiana ..... W, 9-0  
 4/9 at Evansville ..... L, 3-4  
 4/14 (3) Ark.-Little Rock ..... L, 0-6  
 4/15 (3) Denver ..... L, 1-4  
 (1) Richmond, Ky.  
 (2) Clarksville, Tenn.  
 (3) SBC Tournament; Lafayette, La.

**2001**

Record: 8-10  
 SBC, 8th  
 Coach: Jeff True

1/20 (1) Illinois St. .... L, 0-7  
 1/20 at Bellarmine ..... W, 4-3  
 1/27 (2) Wright St. .... L, 1-6  
 1/27 (2) Morehead St. .... L, 1-6  
 1/28 at Eastern Ky. .... L, 3-4  
 2/23 (3) N. Kentucky ..... W, 5-2  
 3/2 Memphis ..... L, 1-6  
 3/8 at Lipscomb ..... W, 6-1  
 3/10 Tennessee St. .... W, 7-0  
 3/17 (4) U.S. National ..... W, 6-1  
 3/25 Texas-Pan Am ..... L, 2-5  
 4/1 at Cumberland ..... W, 5-2  
 4/11 at Belmont..... L, 0-4  
 4/13 Cumberland ..... W, 4-3  
 4/15 Lipscomb ..... W, 4-3  
 4/20 (5) So. Alabama ..... L, 0-6  
 4/21 (5) New Orleans ..... L, 0-5  
 4/21 (5) Denver ..... L, 0-5  
 (1) Louisville, Ky.  
 (2) Richmond, Ky.

(3) Cincinnati, Ohio  
 (4) San Diego, Calif.  
 (5) SBC Tournament; Mobile, Ala.

**2002**

Record: 6-15  
 SBC, 8th  
 Coach: Jeff True

1/26 (1) Wright St. .... L, 0-7  
 1/26 (1) Morehead St. .... L, 0-4  
 1/27 at Eastern Ky. .... L, 0-7  
 1/27 at Kentucky ..... L, 0-6  
 2/1 at Austin Peay ..... W, 5-2  
 2/8 Lipscomb ..... L, 3-4  
 2/9 at Indianapolis ..... W, 5-2  
 2/10 at IUPUI ..... L, 1-5  
 2/22 at So. Indiana ..... W, 5-2  
 3/2 at Evansville ..... L, 2-5  
 3/10 at Murray St. .... L, 0-7  
 3/18 (2) Lipscomb ..... L, 2-5  
 3/19 (2) Hope ..... L, 3-4  
 3/20 (2) Limestone ..... W, 6-1  
 3/22 (2) East Stroudsburg ..... W, 6-1  
 3/24 at Tennessee St. .... W, 7-0  
 4/6 at Belmont..... L, 0-7  
 4/13 at Cumberland ..... L, 3-4  
 4/19 (3) So. Alabama ..... L, 0-4  
 4/20 (3) Ark.-Little Rock ..... L, 0-4  
 4/20 (3) Denver ..... L, 0-5  
 (1) Richmond, Ky.  
 (2) Hilton Head, S.C.  
 (3) SBC Tournament; Mobile, Ala.

**2003**

Record: 4-17  
 SBC, 8th  
 Coach: Jeff True

1/17 at N. Kentucky ..... L, 2-7  
 1/25 (1) Wright St. .... L, 2-5  
 1/25 (1) Lipscomb ..... L, 3-4  
 1/26 at Eastern Ky. .... L, 2-5  
 2/1 Morehead St. .... L, 2-5  
 3/1 So. Indiana ..... W, 4-3  
 3/2 Lindsey Wilson ..... W, 4-3  
 3/7 at Austin Peay ..... W, 5-2  
 3/8 Tennessee St. .... W, 5-0  
 3/16 at Evansville ..... L, 2-5  
 3/21 Austin Peay ..... L, 2-5  
 3/24 at West Florida ..... L, 0-9  
 3/25 at Springhill ..... L, 0-7  
 3/29 Cumberland ..... L, 0-5  
 4/1 at So. Indiana ..... L, 4-5  
 4/5 at Lipscomb ..... L, 3-4  
 4/12 at Memphis ..... L, 0-7  
 4/19 at Cumberland ..... L, 3-4  
 4/25 (2) So. Alabama ..... L, 0-4  
 4/26 (2) Denver ..... L, 0-4  
 4/26 (2) New Mexico St. .... L, 0-4  
 (1) Richmond, Ky.  
 (2) SBC Tournament; Mobile, Ala.

**2004**

Record: 8-13  
 SBC, 8th  
 Coach: Jeff True

2/6 at IUPUI ..... L, 1-6  
 2/8 Lindsey Wilson ..... W, 5-2  
 2/15 IU Southeast ..... W, 5-2  
 2/20 Campbellsville ..... W, 4-3  
 2/21 at Eastern Ky. .... L, 1-6  
 2/28 Lipscomb ..... L, 3-4  
 3/6 Cumberland ..... L, 1-6  
 3/12 at Campbellsville ..... L, 2-4  
 3/13 Tennessee St. .... W, 6-1  
 3/14 Austin Peay ..... L, 1-6  
 3/19 Evansville ..... W, 6-1  
 3/23 (1) Colby ..... W, 4-3  
 3/24 (1) Mo.-St. Louis ..... L, 3-4  
 3/25 (1) Sioux Falls ..... L, 3-4  
 3/28 at Tennessee St. .... W, 7-0  
 4/3 at Lipscomb ..... L, 3-4  
 4/4 at Morehead St. .... L, 0-4  
 4/7 at Austin Peay ..... L, 1-6  
 4/17 at IU Southeast ..... W, 5-2  
 4/23 (2) So. Alabama ..... L, 0-4  
 4/24 (2) New Orleans ..... L, 0-4  
 (1) Hilton Head, S.C.  
 (2) SBC Tournament; Mobile, Ala.

**2005**

Record: 13-10  
 SBC, 8th  
 Coach: Jeff True

1/21 Cumberland U. .... W, 4-1  
 1/28 Indiana Southeast ..... W, 5-2  
 1/29 Morehead St. .... L, 1-6  
 2/4 Lipscomb ..... W, 6-1  
 2/12 Belmont..... L, 3-4  
 2/18 Lindsey Wilson ..... L, 2-5  
 2/25 Campbellsville ..... W, 7-0

2/26 Eastern Ky. .... W, 5-2  
 2/27 Bellarmine ..... W, 7-0  
 3/4 Austin Peay ..... W, 6-1  
 3/22 at North Alabama ..... L, 1-4  
 3/23 at Alabama A&M ..... W, 6-1  
 3/24 at Auburn-Mont. .... L, 1-6  
 3/25 at Birmingham-So. .... L, 0-7  
 3/26 at Tennessee St. .... W, 7-0  
 4/1 at Austin Peay ..... W, 4-3  
 4/2 at Lipscomb ..... L, 3-4  
 4/3 at Cumberland U. .... W, 7-0  
 4/8 at Belmont..... L, 2-5  
 4/9 Tennessee St. .... W, 7-0  
 4/15 at Indiana Southeast ..... W, 4-3  
 4/17 at Lindsey Wilson ..... L, 0-5  
 4/22 (1) Middle Tenn. .... L, 0-4  
 (1) SBC Tournament; Mobile, Ala.

**2006**

Record: 12-7  
 SBC, 7th  
 Coach: Jeff True

10/30 Tennessee-Martin ..... W, 7-0  
 1/27 at Eastern Kentucky ..... L, 2-5  
 1/28 Morehead State ..... L, 2-5  
 2/4 Hanover ..... W, 7-0  
 2/14 at Austin Peay ..... L, 2-5  
 2/23 Lindsey Wilson ..... L, 1-6  
 2/24 Lipscomb ..... L, 3-4  
 2/25 Campbellsville ..... W, 7-0  
 2/26 Bellarmine ..... W, 7-0  
 3/3 at IUPUI ..... W, 5-2  
 3/24 at Alabama A&M ..... W, 7-0  
 3/24 at Alabama State ..... W, 7-0  
 3/27 at Tennessee State ..... W, 7-0  
 3/25 at Alabama-Huntsville ..... W, 7-0  
 4/1 at Bellarmine ..... W, 7-0  
 4/10 at Lindsey Wilson ..... L, 1-6  
 4/17 at Indiana Southeast ..... W, 7-0  
 4/17 at Cumberland ..... W, 7-0  
 4/21 (1) Louisiana-Lafayette ..... L, 0-4  
 (1) SBC Tournament; Mobile, Ala.

**2007**

Record: 9-9  
 SBC, 8th  
 Coach: Jeff True

2/2 at Northern Kentucky ..... W, 5-2  
 2/4 Cumberland ..... L, 1-6  
 2/9 Indiana-Southeast ..... W, 7-0  
 2/10 Bellarmine ..... W, 5-2  
 2/16 Tennessee-Martine ..... L, 3-4  
 2/20 at Austin Peay ..... L, 1-6  
 2/25 Lipscomb ..... L, 2-5  
 3/2 Eastern Kentucky ..... L, 3-4  
 3/11 at Alabama A&M ..... W, 7-0  
 3/12 at Alabama State ..... W, 7-0  
 3/13 at Alabama-Huntsville ..... W, 4-3  
 3/16 at Auburn-Montgomery ..... L, 1-6  
 3/22 at Belmont..... L, 1-6  
 3/25 at Tennessee State ..... W, 7-0  
 4/1 IPFW ..... W, 5-2  
 4/9 at Bellarmine ..... W, 6-1  
 4/13 at Lipscomb ..... L, 1-5  
 4/20 (1) South Alabama ..... L, 0-4  
 (1) SBC Tournament; Mobile, Ala.

**2008**

Record: 13-5  
 SBC, 8th  
 Coach: Jeff True

2/1 at Louisville ..... L, 0-7  
 2/2 at Bellarmine ..... W, 5-2  
 2/9 Belmont..... W, 7-0  
 2/11 Cumberland ..... L, 1-6  
 2/16 Austin Peay ..... W, 4-3  
 2/24 Lipscomb ..... W, 5-2  
 2/29 at IUPUI-Fort Wayne ..... L, 3-4  
 3/1 at Robert Morris ..... W, 5-2  
 3/9 at Alabama A&M ..... W, 7-0  
 3/10 at Alabama State ..... W, 7-0  
 3/11 at North Alabama ..... W, 4-3  
 3/22 at Morehead State ..... L, 2-4  
 3/30 at Alabama-Huntsville ..... W, 5-2  
 4/5 at Tennessee State ..... W, 7-0  
 4/12 at Lipscomb ..... W, 5-2  
 4/13 at Tennessee State ..... W, 7-0  
 4/15 Tennessee State ..... W, 6-0  
 4/18 (1) Denver ..... L, 0-4  
 (1) SBC Tournament; Monroe, La.

**2009**

Record: 12-10  
 SBC, 8th  
 Coach: Jeff True

2/7 Morehead State ..... L, 1-6  
 2/8 Cumberland ..... W, 5-2  
 2/14 Campbellsville ..... W, 6-1  
 2/15 at Murray State ..... L, 2-5  
 2/18 at Austin Peay ..... W, 6-1

2/21 Belmont..... L, 0-7  
 2/27 Albilene Christian ..... L, 2-5  
 2/28 Lipscomb ..... W, 4-3  
 3/7 at Alabama State ..... W, 7-0  
 3/8 at North Alabama ..... W, 4-3  
 3/9 at Alabama-Huntsville ..... W, 4-3  
 3/10 at Alabama A&M ..... W, 7-0  
 3/16 Murray State ..... L, 3-4  
 3/18 at Southern Indiana ..... W, 4-3  
 3/20 at Tennessee State ..... W, 7-0  
 3/26 at Belmont..... L, 1-5  
 4/01 at Indiana Southeast ..... W, 7-0  
 4/03 (1) MTSU ..... L, 0-4  
 4/03 (1) FAU ..... L, 1-4  
 4/04 (1) Memphis ..... L, 0-4  
 4/8 at Tennessee State ..... W, 7-0  
 4/17 (2) MTSU ..... L, 0-4  
 (1) Sun Belt Shootout; Murfreesboro, Tenn  
 (2) SBC Tournament; Denton, Texas

**2010**

Record: 11-9  
 SBC, 8th  
 Coach: Jeff True

2/6 Union College ..... W, 4-3  
 2/13 Lipscomb ..... W, 4-3  
 2/19 Campbellville ..... W, 7-0  
 2/20 Cumberland ..... W, 6-1  
 2/27 North Alabama ..... L, 3-4  
 3/06 at North Alabama ..... L, 2-5  
 3/07 at Alabama-Huntsville ..... W, 4-3  
 3/08 at Alabama State ..... W, 7-0  
 3/18 Southern Indiana ..... W, 4-3  
 3/23 at Murray State ..... L, 3-4  
 3/27 Lindsey Wilson ..... L, 3-4  
 3/29 at Tennessee State ..... W, 7-0  
 4/02 (1) #29 Dever ..... L, 0-4  
 4/03 (1) Louisiana-Lafayette ..... L, 2-4  
 4/04 (1) New Orleans ..... L, 0-4  
 4/09 at Belmont..... L, 2-5  
 4/10 at Cumberland Univ ..... W, 6-1  
 4/11 at Tennessee State ..... W, 7-0  
 4/19 at Campbellsville ..... W, 4-3  
 4/23 (2) Troy ..... L, 0-4  
 (1) Sun Belt Shootout; Troy, Ala.  
 (2) SBC Tournament; New Orleans, La.

**2011**

Record: 6-12  
 SBC, 7th  
 Coach: Jeff True

1/30 Union College ..... L, 1-6  
 2/06 Bellarmine ..... W, 6-1  
 2/12 Lipscomb ..... L, 1-6  
 2/13 Murray State ..... L, 2-5  
 2/18 at Austin Peay ..... L, 0-5  
 2/19 Campbellville ..... W, 6-1  
 2/20 Morehead State ..... L, 2-5  
 2/27 Cumberland Univ ..... L, 3-4  
 3/6 at Alabama-Huntsville ..... L, 2-5  
 3/7 at Alabama State ..... W, 7-0  
 3/19 at Murray State ..... L, 2-5  
 3/20 Tennessee State ..... W, 6-1  
 4/3 at Tennessee State ..... W, 6-1  
 4/8 at Belmont..... L, 3-4  
 4/10 North Alabama ..... W, 5-2  
 4/16 at SIU-Edwardsville ..... L, 0-4  
 4/18 at Cumberland Univ ..... L, 1-6  
 4/20 (1) Florida Atlantic ..... L, 0-4  
 (1) SBC Tournament; Mobile, Ala.

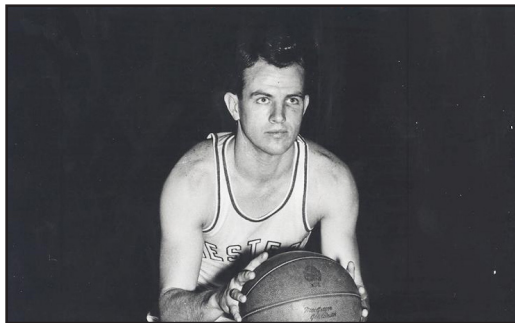
# Hilltopper Tennis Hall of Famers

## • Ted Hornback •



Head Coach: 1939-46, 1948-76  
Career Record: 374-76 (34 seasons)  
19 OVC Championships

## • Dee Gibson •



Hall of Fame Induction: 1991  
Tennis (1941-43, 1946-47)  
Other Letters: Basketball  
Tennis Head Coach: 1947 (8-1 record)

## • Terry Hassall •



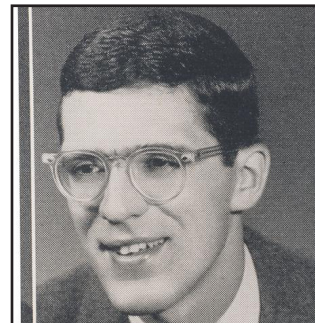
Hall of Fame Induction: 1998  
Tennis: (1968, 1970-71)  
Two-Time OVC Player of the Year  
12-man OVC All-Half Century Team

## • Don (Duck) Ray •



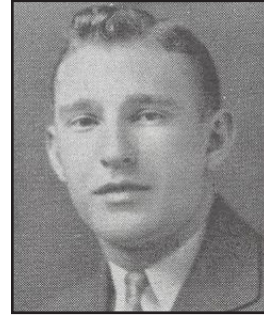
Hall of Fame Induction: 1993  
Tennis: (1942-47)  
Other Letters: Basketball, Golf, Track  
1942 State Doubles Champion

## • Roger Otten •



Hall of Fame Induction: 1997  
Tennis: (1950-53)  
Four-Time OVC Player-of-the-Year  
35-2 Career Singles Record

## • Ralph Dudgeon •



Hall of Fame Induction: 2000  
Tennis: 1936-38  
Other Letters: Basketball  
Kentucky Tennis Hall of Fame in 1990



**2012 Lady Topper Tennis**

Coach.....	30-31
Roster .....	32
Student-Athletes.....	33-38
2011 Season in Review .....	39-41
Lady Topper History.....	42-43



# Director of Women's Tennis Jeff True



## JEFF TRUE

WKU Director of Tennis (Indiana, 1981)

Career Women's Record: 103-93

11 Seasons

Jeff True, WKU's all-time winningest women's tennis coach, enters his 12th season at the helm of the women's tennis squad. True, who surpassed Betty Langley's coaching mark in 2009, has combined for over 340 career wins on both the men's and women's side, with 103 of those wins as the coach of the Lady Toppers.

With 239 career wins directing the men's team, True currently ranks second in Hilltopper history in wins, behind only Hall of Fame coach Ted Hornback.

True took the reigns of the women's program in 2001, guiding the Lady Toppers to a 14-5 mark that season — his best season with the WKU women.

The Lady Toppers have had five different winning seasons under True's guidance, including a 13-7 mark in 2011 with a roster that was stocked full of young talent. The WKU women's roster consisted of only two seniors in 2011, with one being True's daughter and all-Sun Belt Conference performer, Carrie True. In five of the last six seasons, the Lady Toppers have had a .500 or better record, including a winning record in four of those years.

With a 2011 recruiting class that accounted for over 55 percent of the team's singles wins in 2011, the future looks bright for WKU women's tennis.

Monta Reinfelde, one of True's 2011 recruits, tied for the team lead with 14 singles wins last season, playing all matches from the No. 1 position. The four freshmen combined for 38 singles victories. The Lady Toppers, who do not have a senior on the 2012 roster, also return junior Katrina Vucina, who finished behind Reinfelde with 11 singles wins in 2011 as a sophomore.

True's teaching and guidance as a coach has stemmed from his outstanding playing career. As a collegiate player, True played four years at Indiana University, earning all-Big Ten honors in 1980 and 1981. As a standout high school athlete, True was nationally ranked as a junior, while leading John Adams High School to an Indiana state championship.

True's teaching ability was honored in 1992, as he was named the Kentucky Tennis Association Pro of the Year. Aside from that honor, True has also built a steady family dynasty at WKU. In 1999 and 2007, the True family of tennis athletes were named the Kentucky Tennis Association Family of the Year, and in 2000 he won a father-son United States Tennis Association National Championship with his son, Kyle.

His daughter, Carrie, was named an all-Sun Belt Conference performer in 2011 after wrapping up her four-year career on the Hill. His son, Chad, currently serves as his assistant coach.

True and his wife Brenda have five children: sons Kyle, Chad, Andy and Will, and a daughter, Carrie.

### The True File

**High School:** John Adams HS (Indiana)

**College:** Indiana University (1981)

**Lady Topper Head Coach:**  
2001-present

**Overall Coaching Record:**  
Record at WKU: 103-93  
Best Season: 14-5 (2001)

**Playing Career (Indiana):**

- Four-year letterwinner at Indiana
- All-Big Ten honors in 1980 and 1981

**Coaching Career (WKU):**

- WKU Head Coach - 2001-present
- Overall Record (11 seasons): 103-93
- Total Record (11 seasons): same

**Honors:**

- 1992 KTA Pro of the Year
- 1999 KTA Family of the Year
- 2000 USTA Father-Son National Title
- 2007 KTA Family of the Year

**Personal:**

- Wife - Brenda
- Children -  
Sons: Kyle, Chad, Andy and Will  
Daughter: Carrie

## Year-By-Year Records Under True

Year	Coach	Record	Conf. Finish
2001	Jeff True	14-5 (.737)	11th, Sun Belt
2002	Jeff True	7-10 (.412)	11th, Sun Belt
2003	Jeff True	7-11 (.389)	10th, Sun Belt
2004	Jeff True	12-7 (.632)	11th, Sun Belt
2005	Jeff True	6-15 (.286)	11th, Sun Belt
2006	Jeff True	10-8 (.555)	10th, Sun Belt
2007	Jeff True	7-8 (.466)	11th, Sun Belt
2008	Jeff True	9-8 (.529)	11th, Sun Belt
2009	Jeff True	10-6 (.545)	11th, Sun Belt
2010	Jeff True	8-8 (.500)	13th, Sun Belt
2011	Jeff True	13-7 (.650)	12th, Sun Belt
2010	Jeff True	12-10 (.545)	13th, Sun Belt
2011	Jeff True	13-7 (.650)	12th, Sun Belt

• Jeff True — 11 Seasons to Date — 103-93 (.526) •

## Lady Topper Coaching Ranks

Rank	Year(s)	Coach	Record
1	2001-present	Jeff True	103-93 (.523)
2	1974-81	Betty Langley	87-33 (.725)
3	1991-2000	Laura Hudspeth	75-116 (.393)
4	1985-90	Ray Rose	66-49 (.574)
5	1984-85	Yvonne Turner	33-14 (.702)
6	1981-83	Katy Tinius	17-32 (.347)
<b>Total</b>	<b>38 Seasons</b>	<b>6 Coaches</b>	<b>381-337 (.531)</b>

**ALPHABETICAL ROSTER**

<b>Name</b>	<b>Class</b>	<b>Hometown</b>
Carolina Barboza	Fr.-HS	Uruguay
Alex Crofford	So.-1L	Franklin, Tenn.
Katie DiTommaso	Jr.-1L	Fort Wright, Ky.
Morgan Freeman	So.-1L	Corbin, Ky.
McKinley Mason	So.-1L	Lexington, Ky.
Madeline Phillips	Fr.-1L	Louisville, Ky.
Monta Reinfelde	So-1L	Liepaja, Latvia
Katrina Vucina	Jr.-2L	Liepaja, Latvia

**Head Coach:** Jeff True (Indiana, 1981) – 12th Season

**Assistant Coach:** Chad True (WKU, 2008)

**ROSTER BREAKDOWN BY CLASS**

Seniors — 0

Juniors — 2

Sophomores — 4

Freshmen — 2

**ROSTER BREAKDOWN BY STATE / COUNTRY**

Kentucky — 4

Georgia — 2

Latvia — 2

Tennessee — 1

Uruguay — 1



# Katie DiTommaso



## KATIE DiTOMMASO

Junior  
Fort Wright, Ky.

**2010 (Freshman):** Won three singles matches in first season at WKU, including a pair of wins from the No. 4 singles position...Picked up first career win on opening day against Union College...Won two doubles matches, including one with sister Alicia against Tennessee State...Also won a doubles match with teammate Megan Stephens

### Katie DiTommaso's Career Statistics

#### Singles

Year	Overall	Dual	1	2	3	4	5	6
2010	3-7	3-7	0-0	0-0	0-1	2-4	1-2	0-0
<b>Total</b>	<b>3-7</b>	<b>3-7</b>	<b>0-0</b>	<b>0-0</b>	<b>0-1</b>	<b>2-4</b>	<b>1-2</b>	<b>0-0</b>

#### Doubles

Year	Overall	Dual	1	2	3
2010	2-5	2-5	0-0	0-5	2-0
<b>Total</b>	<b>2-5</b>	<b>2-5</b>	<b>0-0</b>	<b>0-5</b>	<b>2-0</b>

# Katrina Vucina



## KATRINA VUCINA

Junior  
Liepaja, Latvia

**2011 (Sophomore):** Finished ranking third on the Lady Topper squad with 11 singles wins in 2011, playing from the No. 2, 3 and 4 singles positions...Opened the season with three straight wins, one of two winning streaks of three on the season...Nine of her 11 singles wins were in straight sets, including three shutouts...Won 10 doubles with three different teammates, including a perfect 7-0 mark with teammate Alex Crofford...The seven wins by the duo was good for the second most by any Lady Topper doubles tandem on the year, trailing only McKinley Mason and Monta Reinfelde.

**2010 (Freshman):** Played all singles at either the No. 1 or No. 2 singles spot, finishing with an 8-6 overall record...The eight wins were second best on the squad...Went 6-1 from the No. 2 singles position...Started the season off with a 2-0 record...Posted a three match winning streak to start the month of March...Teamed with Fionna Heuff for a team-best eight doubles wins at the top doubles spot...Also won a match with teammate Carrie True.

### Katrina Vucina's Career Statistics

#### Singles

Year	Overall	Dual	1	2	3	4	5	6
2010	8-6	8-6	2-5	6-1	0-0	0-0	0-0	0-0
2011	11-8	11-8	0-0	5-4	3-2	3-2	0-0	0-0
<b>Total</b>	<b>19-14</b>	<b>19-14</b>	<b>2-5</b>	<b>11-5</b>	<b>3-2</b>	<b>3-2</b>	<b>0-0</b>	<b>0-0</b>

#### Doubles

Year	Overall	Dual	1	2	3
2010	9-6	9-6	9-6	0-0	0-0
2011	10-5	10-5	0-0	7-0	3-5
<b>Total</b>	<b>19-11</b>	<b>19-11</b>	<b>9-6</b>	<b>7-0</b>	<b>3-5</b>

# Alex Crofford



## ALEX CROFFORD

Sophomore  
Franklin, Tenn.

**2011 (Freshman):** Appeared in all 20 matches in her first season on the Hill, leading WKU with 12 doubles wins, and finished tied for fourth on the team with nine singles victories...Boasted an unblemished 7-0 mark with teammate Katrina Vucina in doubles, as the duo became doubles partners on March 6...Enjoyed the most singles success from the No. 4 and No. 5 positions, finishing with a 7-7 record from those two spots...Won her first career single and double on opening day of the 2011 season on January 30 against Union College...Rattled off six straight singles wins from February 27 to April 3, winning all matches in straight sets and not allowing the opposition more than two points in any set.

**High School-** Played to an undefeated season in singles during her freshman year at Franklin High School... Named MVP senior year.

### Alex Crofford's Career Statistics

#### Singles

Year	Overall	Dual	1	2	3	4	5	6
2011	9-11	9-11	0-0	1-4	1-4	3-3	4-4	0-0
<b>Total</b>	<b>9-11</b>	<b>9-11</b>	<b>0-0</b>	<b>1-4</b>	<b>1-4</b>	<b>3-3</b>	<b>4-4</b>	<b>0-0</b>

#### Doubles

Year	Overall	Dual	1	2	3
2011	12-5	12-5	1-0	11-5	0-0
<b>Total</b>	<b>12-5</b>	<b>12-5</b>	<b>1-0</b>	<b>11-5</b>	<b>0-0</b>

# Morgan Freeman



## MORGAN FREEMAN

Sophomore  
Corbin, Ky.

**2011 (Freshman):** One of four freshman who made a significant impact in 2011...Finished season with six singles wins and seven doubles wins with three different doubles teammates...Won five consecutive singles from February 27 to April 3, winning four straight doubles during that span...Three of her six singles wins in 2011 were via shutout, and all wins were in straight sets...Finished the season with a 3-0 doubles record with teammate Megan Stephens from the No. 3 doubles position.

**High School-** A four-year starter at Corbin high school...Finished as regional runner-up in 2009...Named team MVP in all four years.

### Morgan Freeman's Career Statistics

#### Singles

Year	Overall	Dual	1	2	3	4	5	6
2011	6-9	6-9	0-0	0-0	0-0	0-0	0-1	6-8
<b>Total</b>	<b>6-9</b>	<b>6-9</b>	<b>0-0</b>	<b>0-0</b>	<b>0-0</b>	<b>0-0</b>	<b>0-1</b>	<b>6-8</b>

#### Doubles

Year	Overall	Dual	1	2	3
2011	7-4	7-4	0-0	0-0	7-4
<b>Total</b>	<b>7-4</b>	<b>7-4</b>	<b>0-0</b>	<b>0-0</b>	<b>7-4</b>

# McKinley Mason



## McKINLEY MASON

Sophomore  
Lexington, Ky.

**2011 (Freshman):** One of only two Lady Toppers to see action in all 20 matches in 2011, posting a 9-11 record in singles play...Played from all of the top four singles positions throughout the year, recording a 5-3 record from the No. 3 singles spot...Won seven singles in a row from February 26 to April 3, winning all in straight sets, including a pair of shutouts... Teamed with Monta Reinfelde to lead WKU with 10 doubles wins as a duo, playing all doubles from the top position...Won a doubles match with fellow freshman Alex Crofford in the season opener, before partnering with Reinfelde for the remainder of the season.

**High School-** A four-year starter at Lexington Christian Academy... A three-time KHSAA State doubles finalist...KHSAA regional doubles champion in 2008, 2009 and 2010....Named team MVP in 2008 and 2009...Team captain her senior year...A three-time First Team All-State and First Team All-Region selection.

### McKinley Mason's Career Statistics

#### Singles

Year	Overall	Dual	1	2	3	4	5	6
2011	9-11	9-11	0-1	4-6	5-3	0-1	0-0	0-0
<b>Total</b>	<b>9-11</b>	<b>9-11</b>	<b>0-1</b>	<b>4-6</b>	<b>5-3</b>	<b>0-1</b>	<b>0-0</b>	<b>0-0</b>

#### Doubles

Year	Overall	Dual	1	2	3
2011	11-7	11-7	11-7	0-0	0-0
<b>Total</b>	<b>11-7</b>	<b>11-7</b>	<b>11-7</b>	<b>0-0</b>	<b>0-0</b>

# Monta Reinfelde



## MONTA REINFELDE

Sophomore  
Liepaja, Latvia

**2011 (Freshman):** Anchored a deep WKU freshman class in 2011, playing all of her singles and doubles from the top position, tying for the team lead in singles wins with 14...Won the first three singles of her WKU career, including a pair in straight sets...Following a loss against Austin Peay, rallied to win seven singles in a row from February 19 to March 7, all in which were in straight sets...Closed out the season winning four of her final six singles, including the final two regular season matches against SIU-Edwardsville and Cumberland University...Teamed with freshman McKinley Mason to win 10 doubles matches from the top doubles position, good for the top total of any Lady Topper duo. Carried over a successful freshman campaign into the fall portion of the season in 2011, taking home top honors at the Blue Raider Fall Tennis Classic at Lindsey Wilson College, defeating the tournament's top overall seed in the championship of singles play.

### Monta Reinfelde's Career Statistics

#### Singles

Year	Overall	Dual	1	2	3	4	5	6
2011	14-4	14-4	14-4	0-0	0-0	0-0	0-0	0-0
<b>Total</b>	<b>14-4</b>	<b>14-4</b>	<b>14-4</b>	<b>0-0</b>	<b>0-0</b>	<b>0-0</b>	<b>0-0</b>	<b>0-0</b>

#### Doubles

Year	Overall	Dual	1	2	3
2011	10-7	10-7	10-7	0-0	0-0
<b>Total</b>	<b>10-7</b>	<b>10-7</b>	<b>10-7</b>	<b>0-0</b>	<b>0-0</b>

# Carolina Barboza



## CAROLINA BARBOZA

Freshman  
Uruguay

**On the Hill:** Saw extensive action during the fall portion of the schedule, picking a total of five singles wins in three different tournaments, including a trip to the semifinals of the Blue Raider Fall Tennis Classic...Reached the championship of doubles portion of that tournament, giving her five doubles wins for the fall season.

# 2011 Lady Topper Statistics / Results

Overall Record: 13-7 Conference: 0-0 Region: 0-0 Home: 7-4 Away: 6-2 Neutral: 0-1  
vs National ranked: 0-0 vs Regional ranked: 0-0

## Singles

Player	Overall	Dual	1	2	3	4	5	6
Carrie True	14-3	14-3	0-0	0-0	1-1	4-2	9-0	0-0
Monta Reinfelde	14-4	14-4	14-4	0-0	0-0	0-0	0-0	0-0
Katrina Vucina	11-8	11-8	0-0	5-4	3-2	3-2	0-0	0-0
Alex Crofford	9-11	9-11	0-1	4-6	5-3	0-1	0-0	0-0
McKinley Mason	9-11	9-11	0-0	4-6	5-3	0-1	0-0	0-0
Morgan Freeman	6-9	6-9	0-0	0-0	0-0	0-0	0-1	6-8
Megan Stephens	1-3	1-3	0-0	0-0	0-0	0-1	1-0	0-2
Leanne Caplinger	0-1	0-1	0-0	0-0	0-0	0-0	0-0	0-0
<b>Totals</b>	<b>68-50</b>	<b>68-50</b>	<b>14-5</b>	<b>10-10</b>	<b>10-10</b>	<b>11-9</b>	<b>15-5</b>	<b>8-11</b>
<b>Percentage</b>	<b>.576</b>	<b>.576</b>	<b>.737</b>	<b>.500</b>	<b>.500</b>	<b>.550</b>	<b>.750</b>	<b>.421</b>

## Doubles

Player	Overall	Dual	1	2	3
Mason/Reinfelde	10-7	10-7	10-7	0-0	0-0
Crofford/Vucina	7-0	7-0	0-0	7-0	0-0
Crofford/True	4-5	4-5	0-0	4-5	0-0
Freeman/Stephens	3-0	3-0	0-0	0-0	3-0
Freeman/True	2-1	2-1	0-0	0-0	2-1
Freeman/Vucina	2-3	2-3	0-0	0-0	2-3
Crofford/Mason	1-0	1-0	1-0	0-0	0-0
Stephens/True	1-1	1-1	0-0	0-0	0-0
Stephens/Vucina	1-2	1-2	0-0	0-0	1-2
<b>Totals</b>	<b>33-19</b>	<b>33-19</b>	<b>11-7</b>	<b>12-5</b>	<b>10-7</b>
<b>Percentage</b>	<b>.635</b>	<b>.635</b>	<b>.611</b>	<b>.706</b>	<b>.588</b>

Date	Opponent	Site	Result	Score	Overall Record
Jan. 30	Union College	Bowling Green, Ky.	W	6-1	1-0
Feb. 05	Kentucky Wesleyan	Bowling Green, Ky.	W	6-1	2-0
Feb. 06	Southern Indiana	Bowling Green, Ky.	W	4-3	3-0
Feb. 12	Lipscomb	Bowling Green, Ky.	L	2-5	3-1
Feb. 18	Austin Peay	Clarksville, Tenn.	L	0-5	3-2
Feb. 19	Campbellsville	Bowling Green, Ky.	W	4-3	4-2
Feb. 20	Morehead State	Bowling Green, Ky.	L	1-6	4-3
Feb. 26	Kentucky Wesleyan	Bowling Green, Ky.	W	4-2	5-3
Feb. 26	Belmont	Bowling Green, Ky.	L	2-5	5-4
Feb. 27	Cumberland University	Bowling Green, Ky.	W	6-1	6-4
March 6	Alabama-Huntsville	Huntsville, Ala.	W	7-0	7-4
March 7	Alabama State	Montgomery, Ala.	W	7-0	8-4
March 19	Southeast Missouri St.	Cape Girardeau, Mo.	W	5-2	9-4
March 20	Tennessee State	Nashville, Tenn.	W	7-0	10-4
April 3	Tennessee State	Nashville, Tenn.	W	7-0	11-4
April 8	Belmont	Nashville, Tenn.	L	0-7	11-5
April 10	North Alabama	Bowling Green, Ky.	L	1-6	11-6
April 16	SIU-Edwardsville	Edwardsville, Ill.	W	4-3	12-6
April 18	Cumberland University	Lebanon, Tenn.	W	7-0	13-6
*April 20	Arkansas State	Mobile, Ala.	L	0-4	13-7

\* - Sun Belt Conference Tournament (Mobile, Ala.)

# 2011 Lady Topper Match-By-Match Results

Overall Record: 13-7 Conference: 0-0 Region: 0-0 Home: 7-4 Away: 6-2 Neutral: 0-1  
vs National ranked: 0-0 vs Regional ranked: 0-0

## WKU 6, Union College 1 Jan 30, 2011 • Bowling Green, Ky.

### Singles

1. Diane Proteau (UNION) def. McKinley Mason (WKU).....6-4, 3-6, 11-9
2. Alex Crofford (WKU) def. Ximena Aguilar (UNION).....6-3, 6-1
3. Katrina Vucina (WKU) def. Nicole Bistine (UNION).....6-0, 6-1
4. Morgan Freeman (WKU) def. No player (UNION).....by default
5. Carrie True (WKU) def. No player (UNION).....by default
6. Megan Stephens (WKU) def. No player (UNION).....by default

### Doubles

1. McKinley Mason/Alex Crofford (WKU) def. Diane Proteau/Ximena Aguilar (UNION).....8-3
2. Leanne Caplinger/Megan Stephens (WKU) def. No player/No player (UNION).....by default
3. No Results

## WKU 6, Kentucky Wesleyan 1 Feb. 5, 2011 • Bowling Green, Ky.

### Singles

1. Monta Reinfelde (WKU) def. Jayden Morrison (KYWES).....6-1, 6-1
2. McKinley Mason (WKU) def. Mattie Bogle (KYWES).....6-0, 6-0
3. Alex Crofford (WKU) def. Alicia Augustynska (KYWES).....6-2, 6-2
4. Katrina Vucina (WKU) def. Jamie Brown (KYWES).....6-0, 6-0
5. Carrie True (WKU) def. Tatum McMahon (KYWES).....8-5
6. Kendall Ganus (KYWES) def. Morgan Freeman (WKU).....8-6

### Doubles

1. Reinfelde/Mason (WKU) def. Augustynska/Bogle (KYWES).....8-6
2. True/Crofford (WKU) def. Brown/Butcher (KYWES).....8-2
3. Freeman/Vucina (WKU) def. Morrison/McMahon (KYWES).....8-5

## WKU 4, Southern Indiana 3 Feb. 6, 2011 • Bowling Green, Ky.

### Singles

1. Monta Reinfelde (WKU) def. Girgenti, Michelle (USI).....6-1, 6-3
2. White, Lindsey (USI) def. McKinley Mason (WKU).....6-4, 6-4
3. Coquerille, Morgan (USI) def. Alex Crofford (WKU).....3-6, 7-6, 6-1
4. Katrina Vucina (WKU) def. Stumpf, Ellena (USI).....6-2, 6-2
5. Carrie True (WKU) def. Ackerman, Logan (USI).....6-3, 7-5
6. Hoover, Alyssa (USI) def. Morgan Freeman (WKU).....6-2, 6-3

### Doubles

1. Monta Reinfelde/McKinley Mason (WKU) def. Girgenti, Michelle/White, Lindsey (USI).....9-8
2. Alex Crofford/Carrie True (WKU) def. Stumpf, Ellena/Coquerille, Morgan (USI).....8-2
3. Morgan Freeman/Katrina Vucina (WKU) def. Hoover, Alyssa/Ackerman, Logan (USI).....8-6

## Lipscomb 5, WKU 2 Feb. 12, 2011 • Bowling Green, Ky.

### Singles

1. Monta Reinfelde (WKU) def. Elizabeth Keevil (LIP).....6-0, 5-7, 10-4
2. Kara Jackson (LIP) def. McKinley Mason (WKU).....6-2, 6-1
3. Danielle Hanson (LIP) def. Alex Crofford (WKU).....6-2, 6-3
4. Alyssa Bellini (LIP) def. Katrina Vucina (WKU).....6-3, 6-2
5. Carrie True (WKU) def. Julianne McMeen (LIP).....6-2, 6-1
6. Samantha Bowman (LIP) def. Morgan Freeman (WKU).....6-0, 6-1

### Doubles

1. Kara Jackson/Alyssa Bellini (LIP) def. Monta Reinfelde/McKinley Mason (WKU).....8-6
2. Elizabeth Keevil/Danielle Hanson (LIP) def. Alex Crofford/Carrie True (WKU).....8-2
3. Julianne McMeen/Jow (LIP) def. Katrina Vucina/Morgan Freeman (WKU).....9-7

## Austin Peay 5, WKU 0 Feb. 18, 2011 • Clarksville, Tenn.

### Singles

1. Vanja Tomic (APSU) def. Monta Reinfelde (WKU) 3-6, 6-2, 6-2
2. Carolin Weikard (APSU) def. McKinley Mason (WKU) 6-0, 6-0
3. Andra Cornea (APSU) def. Alex Crofford (WKU) 6-4, 6-0
4. Kimberly Loo (APSU) def. Katrina Vucina (WKU) 6-0, 6-2
5. Rachel Margolies (APSU) def. Morgan Freeman (WKU) 6-0, 6-0

### Doubles

No doubles competition was played

## WKU 4, Campbellsville 3 Feb. 19, 2011 • Bowling Green, Ky.

### Singles

1. Monta Reinfelde (WKU) def. Anita Henestrosa (CAMP).....6-0, 7-6
2. Tanya Murtagh (CAMP) def. McKinley Mason (WKU).....1-6, 6-4, 6-0
3. Gleidys Salazar (CAMP) def. Alex Crofford (WKU).....6-1, 6-3
4. Katrina Vucina (WKU) def. Aspen Edwards (CAMP).....6-2, 6-1
5. Carrie True (WKU) def. Kristen Hamrick (CAMP).....6-4, 6-1
6. Stacey Drew (CAMP) def. Morgan Freeman (WKU).....6-2, 6-2

### Doubles

1. Monta Reinfelde/McKinley Mason (WKU) def. Anita Henestrosa/Tanya Murtagh (CAMP).....8-3
2. Alex Crofford/Carrie True (WKU) def. Gleidys Salazar/Aspen Edwards (CAMP).....8-4
3. Katrina Vucina/Megan Stephens (WKU) def. Kristen Hamrick/Stacey Drew (CAMP).....8-1

## Morehead State 6, WKU 1 Feb. 20, 2011 • Bowling Green, Ky.

### Singles

1. Monta Reinfelde (WKU) def. Alix Young (MOR).....6-2, 6-3
2. Alexandra Rydberg (MOR-W) def. McKinley Mason (WKU).....7-6, 6-3
3. Madeleine Antero (MOR) def. Katrina Vucina (WKU).....6-2, 6-2
4. Victoria Cran (MOR) def. Carrie True (WKU).....6-3, 6-1
5. Jessica Montemayor (MOR) def. Alex Crofford (WKU).....6-3, 6-2
6. Lauren Delaney (MOR) def. Leanne Caplinger (WKU).....6-1, 6-1

### Doubles

1. Antero/Delaney (MOR) def. Monta Reinfelde/McKinley Mason (WKU).....8-4
2. Cran/Montemayor (MOR) def. Carrie True/Alex Crofford (WKU).....8-2
3. Young/Rydberg (MOR) def. Katrina Vucina/Megan Stephens (WKU).....8-1

## WKU 4, Kentucky Wesleyan 2 Feb. 26, 2011 • Bowling Green, Ky.

### Singles

1. Monta Reinfelde (WKU) def. Jayden Morrison (KYW).....6-0, 6-0
2. Katrina Vucina (WKU) def. Alicia Augustynska (KYW).....6-3, 6-2
3. McKinley Mason (WKU) def. Hannah Butcher (KYW).....6-1, 6-0
4. Carrie True (WKU) def. Tatum McMahon (KYW).....6-4, 6-1
5. Maddy Bogle (KYW) def. Alex Crofford (WKU).....6-3, 6-3
6. Kendall Ganus (KYW) def. Megan Stephens (WKU).....6-3, 1-6, 10-8

### Doubles

No doubles matches we played.

## Belmont 5, WKU 2 Feb. 26, 2011 • Bowling Green, Ky.

### Singles

1. Monta Reinfelde (WKU) def. Fabiana Mersan (BEL).....6-1, 6-2
2. Abby Leatherwood (BEL) def. McKinley Mason (WKU).....6-0, 6-2
3. Catherine Holliday (BEL) def. Katrina Vucina (WKU).....6-2, 6-0
4. Lindsay Bennett (BEL) def. Alex Crofford (WKU).....6-0, 6-0
5. Carrie True (WKU) def. Laura Stack (BEL).....7-6, 6-2
6. Natalia Nunes (BEL) def. Megan Stephens (WKU).....6-4, 6-0

### Doubles

1. Monta Reinfelde/McKinley Mason (WKU) def. Fabiana Mersan/Abby Leatherwood (BEL).....8-6
2. Lindsay Bennett/Laura Stack (BEL) def. Alex Crofford/Carrie True (WKU).....8-4
3. Catherine Holliday/Natalia Nunes (BEL) def. Katrina Vucina/Megan Stephens (WKU).....8-3

## WKU 6, Cumberland University 1 Feb. 27, 2011 • Bowling Green, Ky.

### Singles

1. Monta Reinfelde (WKU) def. Larissa Akari Miura (CUMB).....6-1, 6-1
2. McKinley Mason (WKU) def. Courtney Schaub (CUMB).....6-3, 6-2
3. Carrie True (WKU) def. Anita Rácz (CUMB).....6-4, 7-6
4. Amber Johnson (CUMB) def. Megan Stephens (WKU).....6-3, 6-2
5. Alex Crofford (WKU) def. Tais Lacerda Bezerra (CUMB).....6-0, 6-1
6. Morgan Freeman (WKU) def. Lindsey Gaither (CUMB).....6-1, 6-1

### Doubles

1. Akari Miura/Schaub (CUMB) def. Monta Reinfelde/McKinley Mason (WKU).....9-8
2. Carrie True/Alex Crofford (WKU) def. Rácz/Johnson (CUMB).....8-6
3. Megan Stephens/Morgan Freeman (WKU) def. Bezerra/Gaither (CUMB).....8-1



**WKU 7, Alabama-Huntsville 0**  
Mar. 6, 2011 • Huntsville, Ala.

**Singles**

1. Monta Reinfelde (WKU) def. Gia Mulky (UAH).....	6-2, 6-1
2. McKinley Mason (WKU) def. Amanda Sippe (UAH).....	6-0, 6-1
3. Katrina Vucina (WKU) def. Maria Lawton (UAH).....	6-0, 6-1
4. Carrie True (WKU) def. Kassie McDonald (UAH).....	6-2, 6-1
5. Alex Crofford (WKU) def. Lina Carvajal (UAH).....	6-0, 6-1
6. Morgan Freeman (WKU) def. Amanda Bevis (UAH).....	6-0, 6-1

**Doubles**

1. Monta Reinfelde/McKinley Mason (WKU) def. Gia Mulky/Amanda Sippe (UAH).....	8-1
2. Katrina Vucina/Alex Crofford (WKU) def. Maria Lawton/Kassie McDonald (UAH).....	8-5
3. Carrie True/Megan Stephens (WKU) def. Amanda Bevis/Pacheco (UAH).....	9-8

**WKU 7, Alabama State 0**  
Mar. 7, 2011 • Montgomery, Ala.

**Singles**

1. Monta Reinfelde (WKU) def. Amelie Buhl (ASU).....	6-1, 6-1
2. McKinley Mason (WKU) def. Sheniece Rawlins (ASU).....	6-0, 6-0
3. Katrina Vucina (WKU) def. Shameka Williams (ASU).....	6-0, 6-0
4. Carrie True (WKU) def. Renita Rhone (ASU).....	6-0, 6-0
5. Alex Crofford (WKU) def. Beoncia Dunn (ASU).....	6-0, 6-1
6. Morgan Freeman (WKU) def. No player (ASU).....	by default

**Doubles**

1. Monta Reinfelde/McKinley Mason (WKU) def. Amelie Buhl/Sheniece Rawlins (ASU).....	8-2
2. Katrina Vucina/Alex Crofford (WKU) def. Shameka Williams/Beoncia Dunn (ASU).....	8-1
3. Carrie True/Megan Stephens (WKU) def. No player/No player (ASU).....	by default

**WKU 5, Southeast Missouri State 2**  
Mar. 19, 2011 • Cape Girardeau, Mo.

**Singles**

1. Nikole Novikova (SEMO) def. Monta Reinfelde (WKU).....	6-7, 6-4, 10-5
2. Elizabeth Nyenwe (SEMO) def. Katrina Vucina (WKU).....	6-3, 4-6, 10-4
3. McKinley Mason (WKU) def. Ashton Hartley (SEMO).....	7-6, 6-4
4. Alex Crofford (WKU) def. Laura Garcia (SEMO).....	6-2, 6-1
5. Carrie True (WKU) def. Lauren Schaper (SEMO).....	6-0, 6-0
6. Morgan Freeman (WKU) def. Sarah Pettigrew (SEMO).....	6-2, 6-3

**Doubles**

1. Novikova/Elizabeth Nyenwe (SEMO) def. Monta Reinfelde/McKinley Mason (WKU).....	8-2
2. Katrina Vucina/Alex Crofford (WKU) def. Ashton Hartley/Laura Garcia (SEMO).....	8-4
3. Carrie True/Morgan Freeman (WKU) def. Lauren Schaper/Sarah Pettigrew (SEMO).....	8-1

**WKU 7, Tennessee State 0**  
Mar. 20, 2011 • Nashville, Tenn.

**Singles**

1. Monta Reinfelde (WKU) def. Mason, Kryston (TSU).....	6-0, 6-0
2. Katrina Vucina (WKU) def. Suber, Shardel (TSU).....	6-0, 6-0
3. McKinley Mason (WKU) def. Williams, Khadijah (TSU).....	6-1, 6-0
4. Alex Crofford (WKU) def. Knight, Lezlie (TSU).....	6-1, 6-1
5. Megan Stephens (WKU) def. Mensah, Kwatema (TSU).....	6-0, 6-0
6. Morgan Freeman (WKU) def. Dawson (TSU).....	6-0, 6-0

**Doubles**

1. Monta Reinfelde/McKinley Mason (WKU) def. Mason, Kryston/Suber, Shardel (TSU).....	8-0
2. Katrina Vucina/Alex Crofford (WKU) def. Williams, Khadijah/Knight, Lezlie (TSU).....	8-1
3. Megan Stephens/Morgan Freeman (WKU) def. Mensah, Kwatema/Dawson (TSU).....	8-0

**WKU 7, Tennessee State 0**  
Apr. 3, 2011 • Nashville, Tenn.

**Singles**

1. Monta Reinfelde (WKU) def. Mason, Kryston (TSU).....	6-0, 6-0
2. Katrina Vucina (WKU) def. Suber, Shardel (TSU).....	6-0, 6-1
3. McKinley Mason (WKU) def. Williams, Khadijah (TSU).....	6-0, 6-0
4. Carrie True (WKU) def. Knight, Lezlie (TSU).....	6-1, 6-2
5. Alex Crofford (WKU) def. Mensah, Kwatema (TSU).....	6-1, 6-0
6. Morgan Freeman (WKU) def. Dawson (TSU).....	6-0, 6-0

**Doubles**

1. Monta Reinfelde/McKinley Mason (WKU) def. Mason, Kryston/Suber, Shardel (TSU).....	8-1
2. Katrina Vucina/Alex Crofford (WKU) def. Williams, Khadijah/Knight, Lezlie (TSU).....	8-0
3. Carrie True/Morgan Freeman (WKU) def. Mensah, Kwatema/Dawson (TSU).....	8-0

**Belmont 7, WKU 0**  
Apr. 8, 2011 • Nashville, Tenn.

**Singles**

1. Fabiana Mersan (BELW) def. Monta Reinfelde (WKU).....	2-6, 6-4, 10-6
2. Abby Leatherwood (BELW) def. Katrina Vucina (WKU).....	6-4, 6-1
3. Lindsay Bennett (BELW) def. Carrie True (WKU).....	6-0, 6-0
4. Catherine Holliday (BELW) def. McKinley Mason (WKU).....	6-0, 6-2
5. Laura Stack (BELW) def. Alex Crofford (WKU).....	2-6, 6-1, 10-8
6. Abigail Hogan (BELW) def. Morgan Freeman (WKU).....	6-1, 6-0

**Doubles**

1. Abigail Hogan/Abby Leatherwood (BELW) def. Monta Reinfelde/McKinley Mason (WKU).....	8-5
2. Lindsay Bennett/Laura Stack (BELW) def. Carrie True/Alex Crofford (WKU).....	8-3
3. Catherine Holliday/Natalia Nunes (BELW) def. Katrina Vucina/Morgan Freeman (WKU).....	8-3

**North Alabama 6, WKU 1**  
Apr. 10, 2011 • Bowling Green, Ky.

**Singles**

1. Victoria Rees (UNA) def. Monta Reinfelde (WKU).....	6-4, 4-6, 10-7
2. Mackenzie Bishop (UNA) def. Katrina Vucina (WKU).....	6-0, 6-0
3. Bruna Vieira (UNA) def. McKinley Mason (WKU).....	6-4, 6-3
4. Lenka Hola (UNA) def. Alex Crofford (WKU).....	6-1, 6-1
5. Carrie True (WKU) def. Teresa Franco (UNA).....	1-6, 7-5, 10-7
6. Madison Patey (UNA) def. Morgan Freeman (WKU).....	6-3, 6-0

**Doubles**

1. Monta Reinfelde/McKinley Mason (WKU) def. Victoria Rees/Bruna Vieira (UNA).....	8-2
2. Mackenzie Bishop/Madison Patey (UNA) def. Alex Crofford/Carrie True (WKU).....	8-3
3. Lenka Hola/Teresa Franco (UNA) def. Katrina Vucina/Morgan Freeman (WKU).....	8-1

**WKU 4, SIU-Edwardsville 3**  
Apr. 16, 2011 • Edwardsville, Ill.

**Singles**

1. Monta Reinfelde (WKU) def. Carli Connors (SIUE).....	6-2, 6-2
2. Katrina Vucina (WKU) def. Maggie Boeckman (SIUE).....	6-1, 3-6, 6-1
3. Rachael Webb (SIUE) def. McKinley Mason (WKU).....	6-3, 6-3
4. Laura Horning (SIUE) def. Alex Crofford (WKU).....	6-4, 6-3
5. Carrie True (WKU) def. Joanna Corkern (SIUE).....	6-4, 6-4
6. Ali Wulfers (SIUE) def. Morgan Freeman (WKU).....	6-1, 6-1

**Doubles**

1. Monta Reinfelde/McKinley Mason (WKU) def. Carli Connors/Joanna Corkern (SIUE).....	8-3
2. Katrina Vucina/Alex Crofford (WKU) def. Maggie Boeckman/Rachel Webb (SIUE).....	8-6
3. Laura Horning/Miller (SIUE) def. Carrie True/Morgan Freeman (WKU).....	8-3

**WKU 7, Cumberland University 0**  
Apr. 18, 2011 • Lebanon, Tenn.

**Singles**

1. Monta Reinfelde (WKU) def. Larissa Akari Miura (CUMB).....	6-1, 6-3
2. Katrina Vucina (WKU) def. Courtney Schaub (CUMB).....	5-7, 6-2, 6-0
3. McKinley Mason (WKU) def. Anita Rácz (CUMB).....	7-6, 6-3
4. Alex Crofford (WKU) def. Amber Johnson (CUMB).....	6-4, 6-0
5. Carrie True (WKU) def. Tais Lacerda Bezerra (CUMB).....	8-4
6. Morgan Freeman (WKU) def. Lindsey Gaither (CUMB).....	8-0

**Doubles**

1. Akari Miura/Courtney Schaub (CUMB) def. Monta Reinfelde/McKinley Mason (WKU).....	8-6
2. Katrina Vucina/Alex Crofford (WKU) def. Anita Rácz/Tais Lacerda Bezerra (CUMB).....	8-3
3. Megan Stephens/Morgan Freeman (WKU) def. Amber Johnson/Lindsey Gaither (CUMB).....	8-1

**Arkansas State 4, WKU 0**  
Apr. 20, 2011 • Mobile, Ala. (SBC Tournament)

**Singles**

1. Monta Reinfelde (WKU) vs. Emily Crowe (ASU).....	unfinished
2. Jenny Herring (ASU) def. Katrina Vucina (WKU).....	6-0, 6-1
3. Janie Nowland (ASU) def. McKinley Mason (WKU).....	6-2, 6-1
4. Bijjana Miloshevska (ASU) def. Carrie True (WKU).....	6-2, 6-1
5. Ioana Teu (ASU) def. Alex Crofford (WKU).....	6-1, 6-4
6. Menna Kamal (ASU) def. Morgan Freeman (WKU).....	6-0, 6-0

**Doubles**

1. Emily Crowe/Ioana Teu (ASU) def. McKinley Mason/Monta Reinfelde (WKU).....	8-3
2. Alex Crofford/Katrina Vucina (WKU) vs. Bijjana Miloshevska/Nowland (ASU).....	unfinished
3. Jenny Herring/Menna Kamal (ASU) def. Megan Stephens/Carrie True (WKU).....	8-2

# Year-By-Year Records

Year	Coach	Record (Pct.)	Tournament Finish
1974	Betty Langley	3-2 (.600)	4th, KWIC
1975	Betty Langley	11-4 (.733)	4th, KWIC
1976	Betty Langley	14-1 (.933)	KWIC Champions
1977	Betty Langley	14-2 (.875)	3rd, KWIC
1978	Betty Langley	13-2 (.867)	KWIC Champions
1979	Betty Langley	10-4 (.714)	OVC Champions
1980	Betty Langley	7-11 (.389)	3rd, KWIC
1981	Langley / Tinius	5-7 (.417)	4th, OVC
<b>• Betty Langley — 8 Seasons — 87-33 (.725)</b>			
1982	Katy Tinius	6-8 (.429)	5th, OVC
1983	Katy Tinius	6-17 (.261)	
<b>• Katy Tinius — 3 Seasons — 17-32 (.347)</b>			
1984	Yvonne Turner	20-8 (.714)	3rd, KWIC
1985	Turner/Rose	13-6 (.684)	5th, Sun Belt
<b>• Yvonne Turner — 2 Seasons — 33-14 (.702)</b>			
1986	Ray Rose	11-10 (.524)	6th, Sun Belt
1987	Ray Rose	10-10 (.500)	5th, Sun Belt
1988	Ray Rose	8-8 (.500)	7th, Sun Belt
1989	Ray Rose	13-7 (.650)	6th, Sun Belt
1990	Ray Rose	11-8 (.579)	7th, Sun Belt
<b>• Ray Rose — 6 Seasons — 66-49 (.574)</b>			
1991	Laura Hudspeth	11-10 (.524)	5th, Sun Belt
1992	Laura Hudspeth	7-16 (.304)	8th, Sun Belt
1993	Laura Hudspeth	3-14 (.176)	9th, Sun Belt
1994	Laura Hudspeth	5-16 (.238)	9th, Sun Belt
1995	Laura Hudspeth	7-12 (.368)	10th, Sun Belt
1996	Laura Hudspeth	5-6 (.455)	10th, Sun Belt
1997	Laura Hudspeth	12-6 (.667)	8th, Sun Belt
1998	Laura Hudspeth	9-7 (.563)	8th, Sun Belt
1999	Laura Hudspeth	14-12 (.538)	6th, Sun Belt
2000	Laura Hudspeth	2-17 (.105)	9th, Sun Belt
<b>• Laura Hudspeth — 10 Seasons — 75-116 (.393)</b>			
2001	Jeff True	14-5 (.737)	11th, Sun Belt
2002	Jeff True	7-10 (.412)	11th, Sun Belt
2003	Jeff True	7-11 (.389)	10th, Sun Belt
2004	Jeff True	12-7 (.632)	11th, Sun Belt
2005	Jeff True	6-15 (.286)	11th, Sun Belt
2006	Jeff True	10-8 (.555)	10th, Sun Belt
2007	Jeff True	7-8 (.466)	11th, Sun Belt
2008	Jeff True	9-8 (.529)	11th, Sun Belt
2009	Jeff True	12-10 (.545)	11th, Sun Belt
2010	Jeff True	8-8 (.500)	13th, Sun Belt
2011	Jeff True	13-7 (.650)	12th, Sun Belt
<b>• Jeff True — 11 Seasons — 103-93 (.526)</b>			

# Lady Topper Tennis Hall of Famers

• **Brenda Chapman** •



Hall of Fame Induction: 1991  
Tennis: (1973-75)  
Other Letters: Basketball

• **Katy (Strozdus) Tinius** •



Hall of Fame Induction: 1995  
Tennis (1975-78)  
OVC Hall of Fame  
40-9 Career Singles Record

