



# Statistical Bulletin

## Education Series

Edn/B1/2006/1

28<sup>th</sup> February, 2006  
Revised 28<sup>th</sup> April, 2006<sup>(1)</sup>

### Pupils in Scotland, 2005

#### 1. Introduction

1.1 This document contains information on pupils in publicly funded schools in Scotland, mainly derived from the latest annual pupil census which took place in September 2005. As well as the tables contained in this document, the pupil characteristics collected in the census can also be matched against attainment, attendance and exclusions information, and can further be analysed at smaller geographic areas.

1.2 Tables in this publication are grouped into chapters, firstly at a national level into all sector summary figures (tables 1.1-1.11), then into primary (tables 2.1-2.20), secondary (tables 3.1-3.11) and special (tables 4.1-4.8). Then local authority figures are similarly grouped (tables 5.1-5.6, 6.1-6.14, 7.1-7.12, 8.1-8.10). At the bottom of each table a note will direct you to the equivalent national or local authority table. A map of local authorities is given on page 81, and an index is also provided at the back of the publication.

#### 2. Main Statistics

2.1 In September 2005 there were a **total** of 713,240 pupils in 2,769 publicly funded schools in Scotland.

2.2 There were 390,260 pupils in 2,194 **primary** schools, 315,840 pupils in 385 **secondary** schools, and 7,140 pupils in 190 **special** schools (table 1.1). Pupil numbers have been reducing, in line with a fall in the population. In recent years the proportion of pupils in special schools has been falling slightly, from 1.11 per cent in 2000 to 1.02 per cent in 2004 and 1.00 per cent in 2005.

2.3 About a third of primary schools had fewer than 100 pupils, with the **average size** being 178 pupils. The average number of pupils in a secondary school was 820, with almost a third having over 1,000 pupils (table 1.2)

2.4 There were 34,680 pupils who were either based in a special schools or had a **RoN and/or IEP** in primary or secondary schools (table 1.6). In mainstream schools there were 27,540 pupils (3.9 per cent of all mainstream pupils) with a Record of Needs (RoN) and/or an Individualised Educational Programme (IEP). This compares to 25,363 in 2004, a nine per cent increase. Eighty-three per cent of these pupils spent all of their time in mainstream classes (table 1.5).

2.5 Of those with a RoN and/or IEP in mainstream and special schools, the largest categories of **main difficulty** were moderate learning difficulties (10.3 pupils per 1,000), specific learning difficulties in language and/or mathematics – including dyslexia (10.1 pupils per 1,000) and social emotional and behavioural difficulties (6.2 pupils per 1,000). Overall 70

(1) Tables 1.7, 2.6 and 6.8

per cent of pupils with a RoN and/or IEP were boys, the same proportion as in 2004. (table 1.7)

2.6 Of those pupils whose **ethnic background** was declared, 95 per cent were white-UK. The largest other groupings were White-other (1.3 per cent), Asian-Pakistani (1.3 per cent), and Mixed (0.8 per cent). 3.0 per cent of pupils did not disclose their ethnic background (table 1.8), this compares with 3.7 per cent in 2004.

2.7 The average **class size** in primary schools was 23.6 pupils, down from 23.9 in 2004. Composite classes had an average of 19.9 pupils, down from 20.2 in 2004. P1 classes had the smallest average size of single stage classes at 23.1 pupils, down from 23.2 in 2004 (table 2.11).

2.8 There were 2,048 primary school pupils receiving at least some of the curriculum through **Gaelic medium education** with a further 160 being taught Gaelic through the medium of Gaelic and a further 2,924 being taught Gaelic as a learner (table 6.14). There were 433 secondary school pupils receiving at least some of the curriculum through Gaelic medium education with a further 1,292 being taught Gaelic through the medium of Gaelic and a further 2,095 being taught Gaelic as a learner (table 7.12).

Table N°	Scotland	Page
<i>All Sectors</i>		
1.1	Schools and pupils, by school sector, 1996-2005	10
1.2	Size of schools, 2005	10
1.3	Pupils by urban/rural classification and registration for free school meals, 2005	11
1.4	Pupils looked after by local authority, 2005	11
1.5	Pupils with a Record of Needs (RoN) and/or an Individualised Educational Programme (IEP) in mainstream schools, primary and secondary, 2002-2005	11
1.6	Integration of pupils with a Record of Needs and/or an Individualised Educational Programme into mainstream classes, 2005	12
1.7	Main difficulty in learning of pupils with a Record of Needs and/or an Individualised Educational Programme in primary, secondary and special schools, by gender, 2005	12
1.8	Pupil ethnicity by national identity, 2005	13
1.9	Pupil ethnicity and registration for free school meals, 2002-2005	14
1.10	Ethnicity of asylum seekers and refugees, 2005	15
1.11	Schools and pupils by school denomination, 1996-2005	15
 <i>Primary</i>		
2.1	Schools and pupils in publicly funded primary schools, 1996-2005	16
2.2	Primary schools and pupils by school denomination, 1996-2005	16
2.3	Primary pupils by stage, 1998-2005	16
2.4	Primary pupils by age at 28 <sup>th</sup> February 2006 and stage and gender, as at September 2005	17
2.5	Integration of primary pupils with a Record of Needs and/or an Individualised Educational Programme, by gender, 2004 and 2005	18
2.6	Main difficulty in learning of primary pupils with a Record of Needs and/or an Individualised Educational Programme, by gender, 2005	19
2.7	Primary pupils registered for free school meals, 2002 to 2005	19
2.8	.....by stage and gender, 2005	20
2.9	Primary pupil ethnicity by national identity, 2005	20
2.10	.....ethnicity and stage, 2005	21
2.11	Average primary class sizes by type of class and stage, 1998-2005	21
2.12	Average primary class sizes by size of school and type of class, 2005	22
2.13	Number of primary classes and pupils by size and type of class, 2005	22
2.14	P1 single stage primary classes by size of class, 2004 & 2005	22
2.15	P2 .....	23
2.16	P3 .....	23
2.17	P4 .....	23
2.18	P5 .....	24
2.19	P6 .....	24
2.20	P7 .....	24
 <i>Secondary</i>		
3.1	Schools and pupils in publicly funded secondary schools, 1996-2005	25
3.2	Secondary schools and pupils by school denomination, 1996-2005	25
3.3	Secondary pupils by stage, 1998-2005	25
3.4	Secondary pupils by age at 28 <sup>th</sup> February 2006 and stage and gender, as at September 2005	26
3.5	Integration of secondary pupils with a Record of Needs and/or an Individualised Educational Programme, by gender, 2004 & 2005	27
3.6	Main difficulty in learning of secondary pupils with a Record of Needs and/or an Individualised Educational Programme, by gender, 2005	28
3.7	Secondary pupils registered for free school meals, 2002 to 2005	28

3.8	.....by stage and gender, 2005	29
3.9	Secondary pupils by ethnicity and national identity, 2005	29
3.10	.....ethnicity and stage, 2005	30
3.11	Staying on rates of secondary pupils, 1996-2005	30

### *Special*

4.1	Schools and pupils in publicly funded special schools, 1996-2005	31
4.2	Special schools and pupils by school denomination, 1996-2005	31
4.3	Pupils based in special schools by age at 28 <sup>th</sup> February 2006 and gender, 2005	32
4.4	Integration of pupils based in special schools, by gender, 2004 and 2005	32
4.5	Main difficulty in learning of pupils based in special schools with a Record of Needs and/or an Individualised Educational Programme, 2005	33
4.6	Pupils based in special schools registered for free school meals, 2002 to 2005	33
4.7	Pupils based in special schools by gender and mode of attendance, 2000 - 2005	34
4.8	Pupils based in special schools ethnicity by national identity, 2005	34

### Local Authorities

#### *All sectors*

5.1	Publicly funded schools, 1997-2005	35
5.2	Pupils in publicly funded schools, 1997-2005	36
5.3	Looked after children in publicly funded schools, by age and local authority of residence, 2005	37
5.4	Asylum seekers and refugees in publicly funded schools, 2005	38
5.5	Pupils from minority ethnic groups, 2002-2005	39
5.6	Pupils, by Scottish Index of Multiple Deprivation, 2005	40

#### *Primary*

6.1	Publicly funded primary schools, 1997-2005	41
6.2	Pupils in publicly funded primary schools, 2000-2005	42
6.3	Primary schools and pupils by school denomination, 2005	43
6.4	Primary pupils by stage, 2005	44
6.5	Average primary class sizes by type of class, 2005	45
6.6	Average primary class size by class stage, 2005	46
6.7	Class sizes by class stage, 2005	47
6.8	Main difficulty of learning for primary pupils with a Record of Needs and/or an Individualised Educational Programme, 2005	48
6.9	Primary pupils with a Record of Needs and/or an Individualised Educational Programme, 2005	50
6.10	Looked after children in primary schools by local authority of school, 2005	51
6.11	Primary pupils by ethnicity, 2005	52
6.12	Primary pupils who attend schools outwith their local authority of residence, 2003-2005	53
6.13	Primary pupils who attend schools but who live outwith the local authority, 2003-2005	54
6.14	Primary pupils receiving Gaelic medium education, 2005	55

#### *Secondary*

7.1	Publicly funded secondary schools, 1997-2005	56
7.2	Pupils in publicly funded secondary schools, 2000-2005	57
7.3	Secondary schools and pupils by school denomination, 2005	58
7.4	Secondary pupils by stage, 2005	59
7.5	Main difficulty of learning for secondary pupils with a Record of Needs and/or an Individualised Educational Programme, 2005	60

7.6	Secondary pupils with a Record of Needs and/or an Individualised Educational Programme, 2005	62
7.7	Looked after children in secondary schools by local authority of school, 2005	63
7.8	Secondary pupils by ethnicity, 2005	64
7.9	Secondary pupils who attend schools outwith their local authority of residence, 2003-2005	65
7.10	Secondary pupils who attend schools but who live outwith the local authority, 2003-2005	66
7.11	Staying on rates of secondary pupils, 2005	67
7.12	Secondary pupils receiving Gaelic medium education, 2005	68

### *Special*

8.1	Publicly funded special schools, 1997-2005	69
8.2	Pupils based in publicly funded special schools, 2000-2005	70
8.3	Special schools and pupils by school denomination, 2005	71
8.4	Pupils based in special schools by age, 2005	72
8.5	Main difficulty of learning for pupils based in special schools with a Record of Needs and/or an Individualised Educational Programme, 2005	74
8.6	Pupils based in special schools with a Record of Needs and/or an Individualised Educational Programme, 2005	76
8.7	Looked after children in special schools by local authority of school, 2005	77
8.8	Pupils based in special schools by ethnicity, 2005	78
8.9	Pupils based in special schools who attend schools outwith their local authority of residence, 2004 & 2005	79
8.10	Pupils based in special schools who attend schools but live outwith the local authority, 2004 & 2005	80

### Charts

Chart 1	Pupil numbers by sector, 1996-2005	10
Chart 2	Pupils with a Record of Needs (RoN) and/or an Individualised Educational Programme (IEP) in mainstream schools, primary and secondary, 2002-2005	11
Chart 3	Number of pupils with free school meals, RoN/IEP, and looked after by local authority, 2005	13
Chart 4	Pupils by ethnicity, 2005	14

Map of Local Authorities	81
--------------------------	----

Index	82
-------	----

## **BACKGROUND NOTES**

### **1. Sources**

1.1 The information in this publication is derived mainly from the Pupil Census from 12<sup>th</sup> September 2005 and previous years. Some 2004 data has been amended since publication last year, following resubmission by one local authority.

### **2 Coverage and Timing**

2.1 The Pupil Census covers all publicly funded schools in Scotland (local authority and grant-aided). Where a school has more than one department, for example a secondary school with a primary department, these are counted as separate schools. The census of independent schools is published separately, and will be available on the Scottish Executive website.

2.2 Schools which provide education predominantly for children with special educational needs often have pupils from a wide age range and the data collected from this sector reflects this. Where pupils attend a 'special unit' attached to a mainstream school, they are usually included in the figures for the mainstream school. Some schools and local authorities have reported pupils from 'special units' separately.

2.3 Pupils who are withdrawn from school, for example, because of long-term illness, are not included in the school census returns. Information on such pupils is provided by local authorities in the annual survey of children educated outwith school, results of which are available on the Scottish Executive website

<http://www.scotland.gov.uk/Publications/2005/11/14163317/33174>

In 2004/05, 1,512 children were reported by local authorities to have received education outwith school at some point during the year.

2.4 From 2003 a separate staff census has taken place. Results of this will be published in "Teachers in Scotland, 2005", and will be available on the Scottish Executive website.

<http://www.scotland.gov.uk/stats/bulletins/00489>

### **3 Census content**

3.1 The content of the Pupil Census is considered each year in consultation with the Data Exchange in Education and Children Services Group (DEECS). This group includes representatives from local authorities, teaching unions and headteachers associations, as well as staff from the Scottish Executive. The committee operates in the light of National Statistics guidelines, which restricts the department to collecting only the information that is required, at a level which is fit for purpose, whilst always trying to minimise the burden on data providers. Recommendations for changes to the census are made to DEECS through the Scottish Exchange of Educational Data (ScotXed) network.

### **4 Collection methods**

4.1 The information required to complete the September 2005 Pupil Census was collected electronically, through local authorities, from nearly all publicly funded primary, secondary and special schools, as part of the ScotXed programme. The information is generally stored on schools' management information systems, thus reducing the burden on schools.

4.2 ScotXed supports and promotes effective and secure data exchanges so that key partners in school education in Scotland can benefit from access to information to monitor and improve education services. Partners include local authorities, schools, the Scottish Qualifications Agency, HM Inspectorate of Education, Learning and Teaching Scotland and Scottish Executive Education Department. Further information, including specifications of the data exchanges, can be found at [www.scotxed.net](http://www.scotxed.net).

### **5. New Information**

5.1 For the first time in 2005, information was collected as part of the pupil census on the extent of **Gaelic medium education**. These figures are published in tables 6.14 and 7.12.

5.2 In order to assist in monitoring the Disability Discrimination Act, information has started to be collected on the number of **disabled pupils** and the need for physical, curriculum or communication adaptation. Poor data quality in some areas has meant that this information is not being published this year.

5.3 Information has also been collected in the area of **English as an Additional Language**. Again, due to various issues in its first year of collection, this has not been published.

## 6. Definitions

6.1 Tables in this publication cover **publicly funded schools only**, i.e. local authority and grant-aided. Information on independent schools will be available on the Scottish Executive website <http://www.scotland.gov.uk/stats/bulletins/00490>

6.2 Where numbers of pupils are given, these relate to **pupils based** at the school. Pupils who are attending the school but are based at another centre (for example, students from a Further Education College who are taking some classes at a school) are not included.

6.3 A **class** is a group of pupils normally supervised by one teacher. The group may occasionally be supervised by more than one teacher, for example, when pupils are receiving learning support from a teacher who is not the class teacher.

6.4 Maximum class sizes in primary schools are as follows:

- 30 for single stage class P1-P3
- 33 for single stage class P4-P7
- 25 for composite stage class

6.5 A few schools returned data that included pupils from other schools who spend some time in their classes (see 6.3 above). In this publication only pupils on the school roll have been included in the figures in order to avoid double counting of pupils. There still remain however a few schools unable to reconcile class totals with pupil totals. This information has been published as provided. This involved a net difference of 228 pupils. If the additional pupils were excluded, the average class size would remain at 23.6.

6.6 A **composite class** is a class of pupils from two or more stages.

6.7 The **ethnic background** and **national identity** categories were based generally on those collected in the 2001 population census and were agreed following consultation. Pupils and parents were given the option of not disclosing their ethnicity, and in such cases pupils were *not* attributed a category. About 97 per cent of pupils disclosed their ethnic background, an increase on previous years.

6.8 Figures for the **special school** sector are compiled from special schools and special units. There would appear to be inconsistency between schools and between local authorities in the reporting of special schools and special units as separate identities, as well as changes over the past years. We therefore advise caution when comparing results with previous years and across local authorities.

A few authorities do not have special schools, and may fund places in neighbouring authorities for their pupils.

The number of special schools includes 33 where there were no pupils based, but which received pupils based in other schools.

6.9 At September 2005 there was one **grant-aided mainstream** school, with primary and secondary departments, and seven **grant-aided special** schools. These schools are included in national totals, but are identified separately in the local authority level tables. In publications prior to 2003 they were included within the local authority of their location.

6.10 **Free school meal** data collected in the Pupil Census only counts those pupils who are registered for free school meals. Free school meal entitlement (FME) data collected in the January School Meals Survey also includes those pupils who are deemed eligible for free school meals but who may not have registered for their entitlement, accounting for an additional 1.3 per cent of pupils. The FME indicator collected in the annual School Meals Survey was that currently used in funding calculations and in benchmarking schools. Information from the Pupil Census is used only where linkage to other pupil characteristics, or attainment, exclusions and attendance data is necessary.

6.11 A **Record of Needs** (RoN) is provided for a child who has "pronounced, specific or complex special educational needs which require continuing review". The RoN contains the child's details; the details of the parent/guardian and "named person" (someone to represent them); an assessment profile; a summary of the child/young person's impairments; a description of the special educational needs arising from the impairments; a statement of the measures proposed by the education authority; the name of the school to be attended; a summary of the views of the parent/guardian; the date the record was opened and a summary of the reviews of the record; and a note of who is allowed to access the record. Following the implementation of the Additional Support for Learning Act, information in this area will change for the 2006 pupil census.

6.12 **Individualised Educational Programmes** (IEPs) are written plans setting targets that a child, with special educational needs, is expected to achieve. Targets should be limited in number and focus on key priorities of learning. They should be simple, clearly expressed and measurable.

6.13 Pupil census figures on **children looked after by the local authority** are evidently incomplete when compared with similar data from social work departments. They are published this year alongside the social work figures, as at 31<sup>st</sup> March 2005, for comparison.

6.14 The **urban/rural** classifications in Table 1.3 are defined as follows:

- Large urban areas — settlements over 125,000 population. This covers the city conurbations of Edinburgh, Glasgow, Aberdeen and Dundee.
- Other urban areas — settlements of 10,000 to 125,000 people.
- Accessible small towns — settlements of between 3,000 and 10,000 people and within 30 minutes drive of a settlement of 10,000 or more.
- Remote small towns — settlements of between 3,000 and 10,000 people, who are not within 30 minutes drive of a settlement of 10,000 or more people.
- Accessible rural areas — settlements of less than 3,000 people and within 30 minutes drive of a settlement of 10,000 or more people
- Remote rural areas — settlements of less than 3,000 people who are not within 30 minutes drive of a settlement of 10,000 or more people.

## 7. Rounding

7.1 All percentages are rounded separately and breakdowns may consequently not sum to 100 per cent.



## 8. Disclosive data

8.1 Numbers less than five are generally deemed to be disclosive, and hence not published. Where figures have been removed they are replaced by \*. Other figures in the table may also be removed to stop a disclosive figure from being calculated from the total.

8.2 However, in some cases where there are a large number of pupils in the *unknown* category, i.e. ethnic background and national identity, there often exists a large enough amount of uncertainty for figures to be published.

8.3 Occasionally, as in data for grant aided schools, it has been preferable to swap a small number of data rather than removing figures elsewhere in the publication. Swapped data has still usually been marked as \*.

## 9. Other data

9.1 Some further data, for example some school level data, will be made available on the Scottish Executive website [www.scotland.gov.uk/stats](http://www.scotland.gov.uk/stats) . Ad-hoc tables are available on request.

9.2 Analysis on a more local level may also be available via the Neighbourhood Statistics website - <http://www.sns.gov.uk>.

## 10. Symbols

10.1 The following symbols are used:

- .. = not available
- = nil or rounds to nil
- # = not applicable
- \* = disclosive data

## 11. General

11.1 **This is a National Statistics publication.** National Statistics are produced to high professional standards set out in the National Statistics Code of Practice. They undergo regular quality assurance reviews to ensure that they meet customer needs. They are produced free from any political interference.

11.2 The report was edited by: Mal Cooke, Louise Flanagan, Matt Flanagan, Colin Gallacher.

11.3 All tables are available on the Scottish Executive website at <http://www.scotland.gov.uk/stats/bulletins/00487>

## 12. Enquiries

12.1. Public enquiries (non-media) about the information contained in this bulletin should be addressed to Mal Cooke, Education and Children Statistics Unit, Room 1B, Victoria Quay, Edinburgh EH6 6QQ. Telephone 0131 244 1689 or e-mail [school.stats@scotland.gsi.gov.uk](mailto:school.stats@scotland.gsi.gov.uk)

12.2 Media enquiries about the information in this notice should be addressed to:

Marion MacKay : 0131 244 3070

**28<sup>th</sup> February, 2005**

**Scotland: All Sectors**

Table 1.1: Schools and pupils, by school sector, 1996 - 2005

	Schools				Pupils			
	Primary	Secondary	Special <sup>(1)</sup>	Total	Primary	Secondary	Special	Total
1996	2,313	403	158	2,874	441,727	316,594	8,077	766,398
1997	2,300	401	158	2,859	440,594	314,889	8,056	763,539
1998	2,291	392	185	2,868	436,979	313,204	8,231	758,414
1999	2,293	389	195	2,877	431,414	315,356	8,311	755,081
2000	2,278	389	195	2,862	425,221	317,704	8,318	751,243
2001	2,271	387	197	2,855	420,521	316,359	8,183	745,063
2002	2,258	386	191	2,835	413,713	316,903	7,981	738,597
2003	2,248	386	194	2,828	406,015	318,427	7,680	732,122
2004	2,217	386	192	2,795	398,100	317,900	7,389	723,389
2005	2,194	385	190	2,769	390,260	315,840	7,140	713,240

(1) Changes in number of sites identified as separate schools do not necessarily signify a change in provision. See background note 6.8. From 2002 onwards, figures include schools managed by local authority social work services. Local authority figures on pages 35 & 36

Chart 1: Pupil numbers by sector, 1996-2005

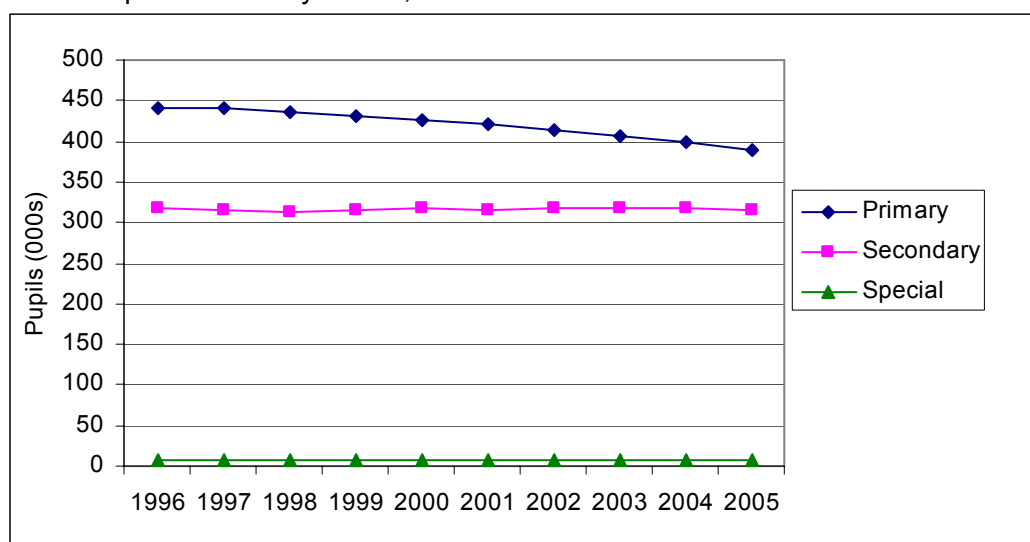


Table 1.2: Size of schools, 2005

School roll	Schools			Pupils		
	Primary	Secondary	Special <sup>(1)</sup>	Primary	Secondary	Special
under 50	431	14	101	12,067	383	2,378
50-99	320	7	40	23,091	489	2,650
100-199	568	12	15	86,109	1,735	1,904
200-299	478	7	1	116,765	1,788	208
300-399	274	11	-	95,364	3,810	-
400-499	97	24	-	41,500	10,965	-
500-599	16	29	-	8,670	15,855	-
600-799	9	67	-	5,890	47,860	-
800-999	1	88	-	804	78,737	-
1,000-1,199	-	73	-	-	79,684	-
1,200 and over	-	53	-	-	74,534	-

(1) There were also 33 special schools where there were no pupils based.

SCOTLAND: ALL SECTORS

Table 1.3: Pupils by urban/rural classification and registration for free school meals, 2005<sup>(1)</sup>

	Classification of school			Classification of pupil <sup>(2)</sup>		
	All pupils	Registered for free meals	%	All pupils	Registered for free meals	%
Scotland	712,880	113,650	16	705,182	111,605	16
Large urban areas	252,739	55,331	22	245,597	54,315	22
Other urban areas	232,620	35,403	15	212,265	33,557	16
Accessible small towns	85,134	9,247	11	77,672	9,481	12
Remote small towns	30,339	3,137	10	21,409	2,715	13
Accessible rural areas	79,524	7,849	10	105,223	8,331	8
Remote rural areas	32,524	2,683	8	43,016	3,206	7

(1) Data does not include grant aided special schools.

(2) Geographic location not identified for a further 7,698 pupils.

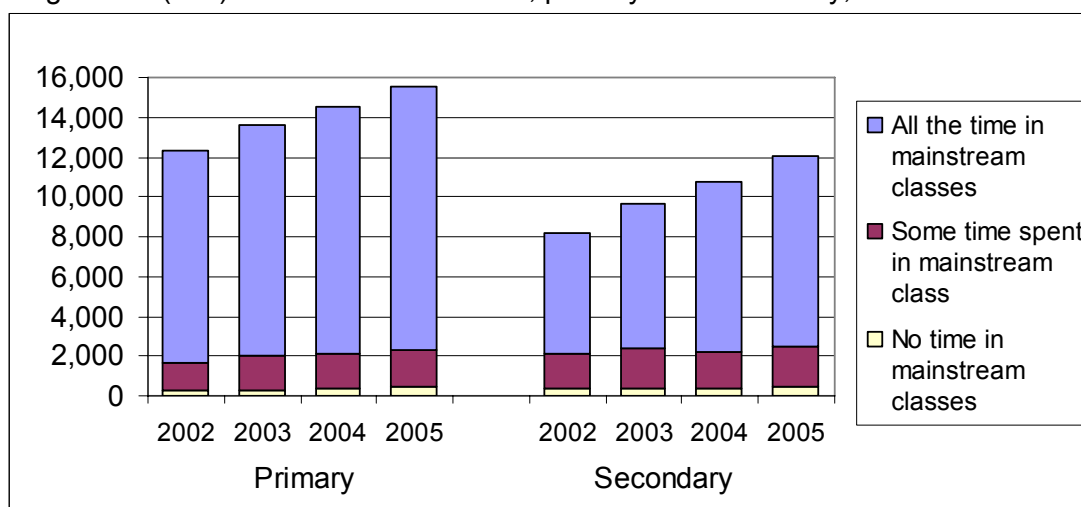
Table 1.4: Pupils looked after by local authority, 2005

	Number of pupils	Looked after:	
		At home	Away from home
Female	350,826	1,792	1,698
Male	362,414	2,298	1,905
Total	713,240	4,090	3,603

Table 1.5: Pupils with a Record of Needs (RoN) and/or an Individualised Educational Programme (IEP) in mainstream schools, primary and secondary, 2002-2005

	Primary				Secondary			
	2002	2003	2004	2005	2002	2003	2004	2005
All the time in mainstream classes	10,618	11,514	12,452	13,246	6,134	7,324	8,547	9,542
Some time spent in mainstream class	1,406	1,749	1,731	1,852	1,741	1,998	1,881	2,027
No time in mainstream classes	287	319	386	423	332	362	366	450
Total	12,310	13,582	14,569	15,521	8,206	9,684	10,794	12,019
Percentage of school roll	3.0	3.3	3.7	4.0	2.6	3.0	3.4	3.8

Chart 2: Pupils with a Record of Needs (RoN) and/or an Individualised Educational Programme (IEP) in mainstream schools, primary and secondary, 2002-2005



## SCOTLAND: ALL SECTORS

Table 1.6: Integration of pupils with a Record of Needs (RoN) and/or an Individualised Educational Programme (IEP) into mainstream classes<sup>(1)</sup>, 2005

Nature of attendance	All pupils in special schools and those with RoN and/or IEP in mainstream schools	With RoN only	With IEP only	With both RoN and IEP
2005	34,680	1,512	21,127	11,938
Time spent by pupils in mainstream classes				
All the time in mainstream classes	22,829	1,204	17,267	4,358
¾ or more but less than all time in mainstream classes	1,341	57	813	471
½ or more but less than ¾ of the time in mainstream classes	1,302	36	618	647
¼ or more but less than ½ of the time in mainstream classes	673	24	218	430
Some time, but less than ¼ of the time in mainstream classes	925	11	295	619
No time in mainstream classes	7,610	180	1,916	5,413

(1) See tables 2.5, 3.5 and 4.4 for separate sector tables. Local authority figures on pages 50, 62 and 76.

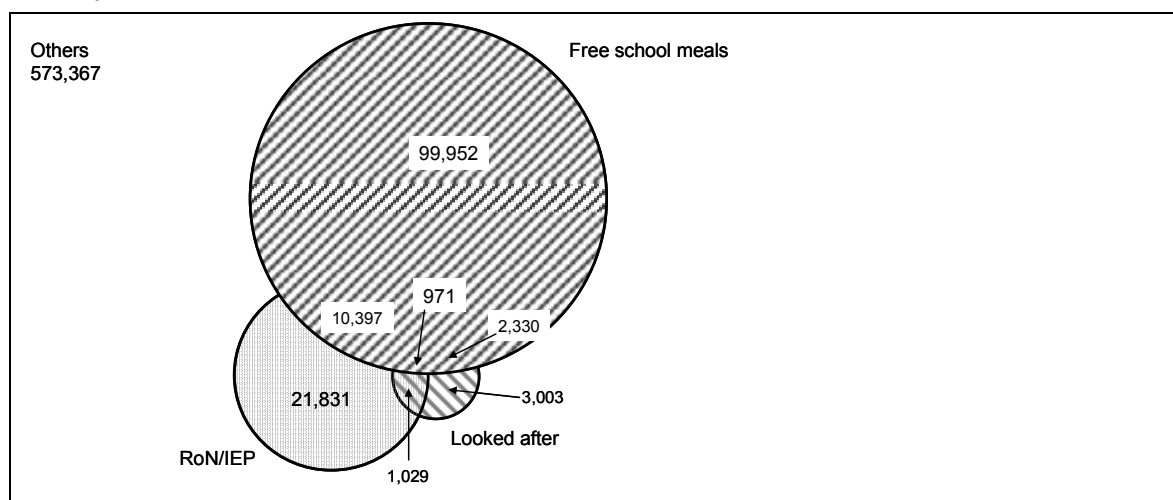
Table 1.7: Main difficulty in learning of pupils with a Record of Needs and/or an Individualised Educational Programme in primary, secondary and special schools, by gender, 2005

	Rate per 1,000 pupils			Rate per 1,000 pupils		
	Female	Male	Total	Female	Male	Total
Total	10,445	24,132	34,577	29.8	66.6	48.5
Significant hearing impairment	261	363	624	0.7	1.0	0.9
Significant visual impairment	218	286	504	0.6	0.8	0.7
Significant physical or motor impairments	506	792	1,298	1.4	2.2	1.8
Significant language and speech disorder	428	1,251	1,679	1.2	3.5	2.4
Autistic spectrum disorder	486	2,998	3,484	1.4	8.3	4.9
Social, emotional and behavioural difficulties	803	3,642	4,445	2.3	10.0	6.2
Learning difficulties:						
Moderate	2,728	4,649	7,377	7.8	12.8	10.3
Severe	462	729	1,191	1.3	2.0	1.7
Profound	68	78	146	0.2	0.2	0.2
Specific – in language and/or mathematics (including dyslexia)	2,135	5,097	7,232	6.1	14.1	10.1
Complex or multiple impairments:						
Dual sensory impairment	32	40	72	0.1	0.1	0.1
Moderate learning difficulties & significant additional impairments or disorders	627	1,197	1,824	1.8	3.3	2.6
Severe learning difficulties & significant additional impairments or disorders	412	679	1,091	1.2	1.9	1.5
Profound learning difficulties & significant additional impairments or disorders	253	295	548	0.7	0.8	0.8
Other	1,008	1,993	3,001	2.9	5.5	4.2
Not known / Not disclosed	18	43	61	0.1	0.1	0.1

Local authority figures on pages 48, 60 and 74.

SCOTLAND: ALL SECTORS

Chart 3: Number of pupils with free school meals, RoN/IEP, and looked after by local authority, 2005<sup>(1)</sup>



(1) Data does not include grant aided special schools.

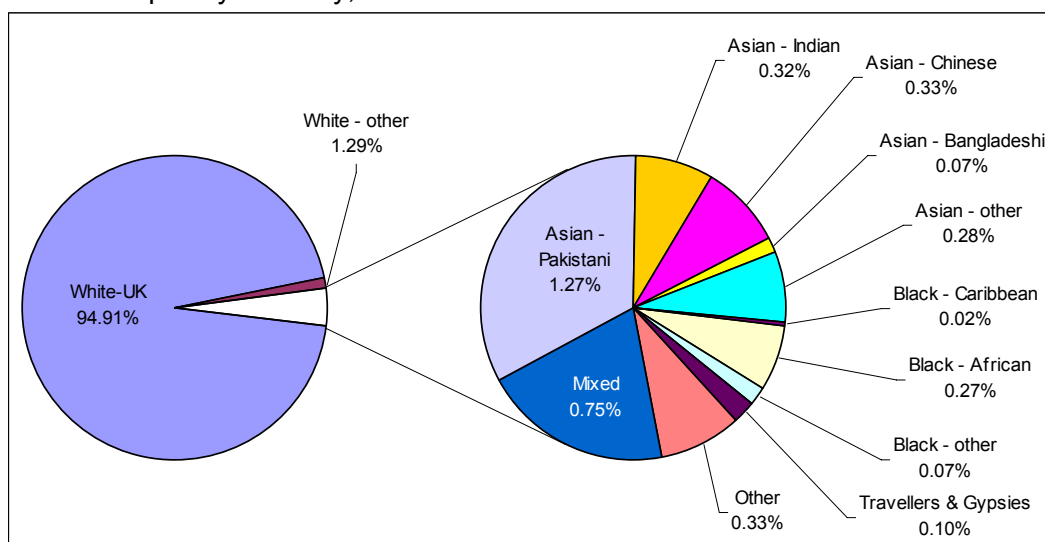
Table 1.8: Pupil ethnicity by national identity, 2005<sup>(1)</sup>

	Scottish	English	Northern Irish	Welsh	British	Irish	Other	Not known / not disclosed	Total
White – UK	514,396	15,735	559	554	88,350	75	2,505	33,885	656,059
White – Other	3,200	214	22	3	1,332	83	3,160	912	8,926
Mixed	3,091	231	5	8	1,292	5	354	222	5,208
Asian – Indian	770	45	4	-	701	-	482	221	2,223
Asian – Pakistani	2,980	107	2	1	3,759	1	625	1,278	8,753
Asian – Bangladeshi	140	14	-	-	176	-	111	58	499
Asian – Chinese	708	32	2	-	884	1	449	200	2,276
Asian – Other	231	23	-	2	314	1	1,135	200	1,906
Black – Caribbean	23	14	1	-	21	-	29	17	105
Black – African	101	25	-	-	185	4	1,224	295	1,834
Black – Other	108	13	-	-	98	-	212	77	508
Occupational Traveller	128	4	1	-	17	1	14	11	176
Gypsy / Traveller	297	36	1	-	44	3	8	29	418
Other Traveller	47	4	-	-	9	-	5	11	76
Other	407	32	-	-	347	4	1,102	358	2,250
Not known / disclosed	3,657	123	5	2	1,427	3	539	15,907	21,663
<b>Total</b>	<b>530,284</b>	<b>16,652</b>	<b>602</b>	<b>570</b>	<b>98,956</b>	<b>181</b>	<b>11,954</b>	<b>53,681</b>	<b>712,880</b>

(1) Does not include grant aided special schools.  
Local authority figures on page 39.

SCOTLAND: ALL SECTORS

Chart 4: Pupils by ethnicity, 2005<sup>(1)</sup>



(1) Does not include grant aided special schools. Percentages of those where ethnic background is known. Ethnicity not known or not disclosed for 3 per cent of pupils. Local authority figures on pages 52, 64 and 78.

Table 1.9: Pupil ethnicity and registration for free school meals, 2002-2005<sup>(1)</sup>

	2002			2003			2004			2005			Registered for free school meals	% registered for free school meals
	Female	Male	Total	Female	Male	Total	Female	Male	Total	Female	Male	Total		
White - UK	323,234	332,825	656,059	323,234	332,825	656,059	103,112	16						
White - Other	4,388	4,538	8,926	4,388	4,538	8,926	1,365	15						
Mixed	2,547	2,661	5,208	2,547	2,661	5,208	923	18						
Asian - Indian	1,044	1,179	2,223	1,044	1,179	2,223	263	12						
Asian - Pakistani	4,254	4,499	8,753	4,254	4,499	8,753	1,760	20						
Asian - Bangladeshi	232	267	499	232	267	499	68	14						
Asian - Chinese	1,130	1,146	2,276	1,130	1,146	2,276	148	7						
Asian - Other	963	943	1,906	963	943	1,906	486	25						
Black - Caribbean	54	51	105	54	51	105	21	20						
Black - African	917	917	1,834	917	917	1,834	689	38						
Black - Other	237	271	508	237	271	508	217	43						
Occupational Traveller	81	95	176	81	95	176	64	36						
Gypsy / Traveller	207	211	418	207	211	418	189	45						
Other Traveller	36	40	76	36	40	76	38	50						
Other	1,055	1,195	2,250	1,055	1,195	2,250	632	28						
Not known / not disclosed	10,314	11,349	21,663	10,314	11,349	21,663	3,675	17						
<b>Total</b>	<b>350,693</b>	<b>362,187</b>	<b>712,880</b>	<b>350,693</b>	<b>362,187</b>	<b>712,880</b>	<b>113,650</b>	<b>16</b>						

(1) Data does not include grant aided special schools.

## SCOTLAND: ALL SECTORS

Table 1.10: Ethnicity of asylum seekers and refugees, 2005<sup>(1)</sup>

	Asylum Seekers	Refugees
White - UK	11	4
White - Other	190	85
Mixed	10	4
Asian - Indian	12	2
Asian - Pakistani	185	42
Asian - Bangladeshi	5	1
Asian - Chinese	6	2
Asian - Other	259	136
Black - Caribbean	4	1
Black - African	460	194
Black - Other	102	22
Occupational Traveller	5	-
Gypsy / Traveller	-	1
Other Traveller	2	2
Other	311	109
Not known / not disclosed	71	19
<b>Total</b>	<b>1,633</b>	<b>624</b>

(1) Does not include grant aided special schools.  
Local authority figures on page 38.

Table 1.11: Schools and pupils by school denomination, 1996-2005

	Schools			Pupil roll		
	Non-denominational	Roman Catholic	Other denomination	Non-denominational	Roman Catholic	Other denomination
1996	2,434	422	18	632,504	132,885	1,009
1997	2,419	421	19	629,842	132,728	969
1998	2,424	418	26	625,974	131,367	1,073
1999	2,429	417	31	622,920	130,998	1,163
2000	2,415	416	31	619,617	130,493	1,133
2001	2,408	414	33	614,722	129,188	1,153
2002	2,393	409	33	609,567	127,887	1,143
2003	2,388	411	29	604,837	126,295	990
2004	2,360	405	28	597,843	124,588	958
2005	2,339	401	29	589,263	122,873	1,104

Local authority figures on pages 43, 58 and 71.

**Scotland: Primary****Table 2.1: Schools and pupils in publicly funded primary schools, 1996-2005**

	Schools	Female	Male	Total
1996	2,313	..	..	441,727
1997	2,300	..	..	440,594
1998 <sup>(1)</sup>	2,291	213,276	222,430	436,979
1999	2,293	211,168	220,246	431,414
2000	2,278	208,066	217,155	425,221
2001	2,271	205,642	214,879	420,521
2002 <sup>(1)</sup>	2,258	202,432	211,279	413,713
2003	2,248	198,725	207,290	406,015
2004	2,217	195,038	203,062	398,100
2005	2,194	191,099	199,161	390,260

(1) There were 1,273 pupils in 1998 and 2 pupils in 2002 for whom gender was not recorded. Local authority figures on pages 41 and 42.

**Table 2.2: Primary schools and pupils by school denomination, 1996-2005**

	Schools			Pupil roll		
	Non-denominational	Roman Catholic	Other denomination	Non-denominational	Roman Catholic	Other denomination
1996	1,959	350	4	362,783	78,576	368
1997	1,946	350	4	362,041	78,211	342
1998	1,937	350	4	359,217	77,408	354
1999	1,939	350	4	354,735	76,338	341
2000	1,925	349	4	349,639	75,270	312
2001	1,918	349	4	345,647	74,571	303
2002	1,910	344	4	340,074	73,340	299
2003	1,899	345	4	334,171	71,564	280
2004	1,875	339	3	327,857	70,008	235
2005	1,854	336	4	321,073	68,790	397

Local authority figures on page 43.

**Table 2.3: Primary pupils by stage, 1998-2005**

	1998	1999	2000	2001	2002	2003	2004	2005
P1	60,543	59,053	57,977	56,771	56,374	55,434	53,439	52,292
P2	62,262	60,445	58,762	57,722	56,672	56,351	55,451	53,280
P3	63,945	62,121	60,190	58,709	57,607	56,710	56,472	55,407
P4	63,204	63,945	61,846	59,918	58,576	57,690	56,801	56,474
P5	60,678	63,027	63,484	61,658	59,827	58,629	57,794	56,763
P6	62,350	60,646	62,797	63,377	61,419	59,880	58,558	57,643
P7	62,725	62,177	60,165	62,366	63,037	61,277	59,585	58,401
Stage not known <sup>(1)</sup>	1,272	-	-	-	201	44	-	-

(1) In 1998 these figures represent pupils attending special units, where stage was unknown. Between 1999 and 2002, stage was recorded for these pupils. In 2002 and 2003, this figure represents pupils where stage was not recorded. Local authority figures on page 44.



## SCOTLAND: PRIMARY

Table 2.4a: Primary pupils (all) by age at 28<sup>th</sup> February 2006 and stage, as at September 2005<sup>(1)</sup>

	P1	P2	P3	P4	P5	P6	P7
4	112	-	-	-	-	-	-
5	47,359	98	-	-	-	-	-
6	4,756	48,656	130	-	-	-	-
7	17	4,515	50,851	120	-	-	-
8	-	11	4,411	52,303	164	-	-
9	-	-	14	4,035	52,909	185	-
10	-	-	-	14	3,673	53,856	213
11	-	-	-	-	17	3,589	54,599
12	-	-	-	-	-	12	3,573
13	-	-	-	-	-	-	14

(1) There were 54 pupils for whom age was outwith the shown range.

Table 2.4b: Primary pupils (female) by age at 28<sup>th</sup> February 2006 and stage, as at September 2005<sup>(1)</sup>

	P1	P2	P3	P4	P5	P6	P7
4	76	-	-	-	-	-	-
5	23,704	71	-	-	-	-	-
6	1,724	24,478	84	-	-	-	-
7	9	1,593	25,399	72	-	-	-
8	-	2	1,519	26,213	93	-	-
9	-	-	5	1,440	26,257	107	-
10	-	-	-	8	1,359	26,754	135
11	-	-	-	-	6	1,342	27,268
12	-	-	-	-	-	5	1,340
13	-	-	-	-	-	-	3

(1) There were 33 pupils for whom age was outwith the shown range.

Table 2.4c: Primary pupils (male) by age at 28<sup>th</sup> February 2006 and stage, as at September 2005<sup>(1)</sup>

	P1	P2	P3	P4	P5	P6	P7
4	36	-	-	-	-	-	-
5	23,655	27	-	-	-	-	-
6	3,032	24,178	46	-	-	-	-
7	8	2,922	25,452	48	-	-	-
8	-	9	2,892	26,090	71	-	-
9	-	-	9	2,595	26,652	78	-
10	-	-	-	6	2,314	27,102	78
11	-	-	-	-	11	2,247	27,331
12	-	-	-	-	-	7	2,233
13	-	-	-	-	-	-	11

(1) There were 21 pupils for whom age was outwith the shown range.

## SCOTLAND: PRIMARY

Table 2.5a: Integration of primary pupils (total) with a Record of Needs and/or an Individualised Educational Programme, 2004 and 2005

Nature of attendance	All pupils with RoN and/or IEP	With RoN only	With IEP only	With both RoN and IEP
2004	14,569	515	10,646	3,408
2005	15,521	433	11,912	3,176
Time spent by pupils in mainstream classes				
All the time in mainstream classes	13,246	410	10,826	2,010
$\frac{3}{4}$ or more but less than all time in mainstream classes	341	1	235	105
$\frac{1}{2}$ or more but less than $\frac{3}{4}$ of the time in mainstream classes	695	8	377	310
$\frac{1}{4}$ or more but less than $\frac{1}{2}$ of the time in mainstream classes	315	4	119	192
Some time, but less than $\frac{1}{4}$ of the time in mainstream classes	501	4	195	302
No time in mainstream classes	423	6	160	257

Local authority figures on page 50.

Table 2.5b: Integration of primary pupils (female) with a Record of Needs and/or an Individualised Educational Programme, 2004 and 2005

Nature of attendance	All pupils with RoN and/or IEP	With RoN only	With IEP only	With both RoN and IEP
2004	4,245	160	3,063	1,022
2005	4,532	144	3,460	928
Time spent by pupils in mainstream classes				
All the time in mainstream classes	3,936	137	3,192	607
$\frac{3}{4}$ or more but less than all time in mainstream classes	90	-	62	28
$\frac{1}{2}$ or more but less than $\frac{3}{4}$ of the time in mainstream classes	191	2	91	98
$\frac{1}{4}$ or more but less than $\frac{1}{2}$ of the time in mainstream classes	99	3	35	61
Some time, but less than $\frac{1}{4}$ of the time in mainstream classes	138	1	51	86
No time in mainstream classes	78	1	29	48

Table 2.5c: Integration of primary pupils (male) with a Record of Needs and/or an Individualised Educational Programme, 2004 and 2005

Nature of attendance	All pupils with RoN and/or IEP	With RoN only	With IEP only	With both RoN and IEP
2004	10,324	355	7,583	2,386
2005	10,989	289	8,452	2,248
Time spent by pupils in mainstream classes				
All the time in mainstream classes	9,310	273	7,634	1,403
$\frac{3}{4}$ or more but less than all time in mainstream classes	251	1	173	77
$\frac{1}{2}$ or more but less than $\frac{3}{4}$ of the time in mainstream classes	504	6	286	212
$\frac{1}{4}$ or more but less than $\frac{1}{2}$ of the time in mainstream classes	216	1	84	131
Some time, but less than $\frac{1}{4}$ of the time in mainstream classes	363	3	144	216
No time in mainstream classes	345	5	131	209

## SCOTLAND: PRIMARY

Table 2.6: Main difficulty in learning of primary pupils with a Record of Needs and/or an Individualised Educational Programme, 2005

Impairment				Rate per 1,000 pupils		
	Female	Male	Total	Female	Male	Total
Total	4,532	10,989	15,521	23.7	55.2	39.8
Significant hearing impairment	98	130	228	0.5	0.7	0.6
Significant visual impairment	59	100	159	0.3	0.5	0.4
Significant physical or motor impairments	202	332	534	1.1	1.7	1.4
Significant language and speech disorder	306	893	1,199	1.6	4.5	3.1
Autistic spectrum disorder	239	1,497	1,736	1.3	7.5	4.4
Social, emotional and behavioural difficulties	292	1,582	1,874	1.5	7.9	4.8
Learning difficulties:						
Moderate	1,142	2,052	3,194	6.0	10.3	8.2
Severe	128	241	369	0.7	1.2	0.9
Profound	27	31	58	0.1	0.2	0.1
Specific – in language and/or mathematics (including dyslexia)	1,172	2,461	3,633	6.1	12.4	9.3
Complex or multiple impairments:						
Dual sensory impairment	17	18	35	0.1	0.1	0.1
Moderate learning difficulties & significant additional impairments or disorders	220	402	622	1.2	2.0	1.6
Severe learning difficulties & significant additional impairments or disorders	83	144	227	0.4	0.7	0.6
Profound learning difficulties & significant additional impairments or disorders	35	62	97	0.2	0.3	0.2
Other	504	1,010	1,514	2.6	5.1	3.9
Not known / not disclosed	8	34	42	0.0	0.2	0.1

Local authority figures on page 48.

Table 2.7: Primary pupils registered for free school meals, 2002 to 2005

	2002 <sup>(1)</sup>	2003	2004	2005
Number of pupils	413,630	406,015	398,100	390,260
Registered	74,492	73,468	70,728	66,115
Not registered	339,138	332,547	327,372	324,145

(1) Excludes a grant aided school.

## SCOTLAND: PRIMARY

Table 2.8: Primary pupils registered for free school meals by stage and gender, 2005

	All pupils	Pupils registered for free school meals			Overall % registered for free school meals
		Female	Male	Total	
P1 <sup>(1)</sup>	52,292	3,785	4,093	7,878	15.1
P2	53,280	4,508	4,631	9,139	17.2
P3	55,407	4,645	5,046	9,691	17.5
P4	56,474	4,885	5,077	9,962	17.6
P5	56,763	4,869	5,105	9,974	17.6
P6	57,643	4,810	4,966	9,776	17.0
P7	58,401	4,847	4,848	9,695	16.6

(1) Lower number likely to be due to timing of census early in the school year.

Table 2.9: Primary pupil ethnicity by national identity, 2005

	Scottish	English	Northern Irish	Welsh	British	Other	Not known / not disclosed	Total
White – UK	281,391	8,740	289	287	48,784	1,094	15,809	356,394
White – Other	1,974	153	13	2	854	1,976	514	5,486
Mixed	1,905	143	3	2	860	234	148	3,295
Asian – Indian	443	27	2	-	379	355	126	1,332
Asian – Pakistani	1,702	54	1	-	2,256	388	655	5,056
Asian – Bangladeshi	93	5	-	-	110	75	26	309
Asian – Chinese	345	11	-	-	476	250	85	1,167
Asian – Other	135	13	-	1	201	769	118	1,237
Black – Caribbean	11	6	-	-	13	22	8	60
Black – African	48	17	-	-	113	814	155	1,147
Black – Other	54	5	-	-	64	145	36	304
Occupational Traveller	75	4	1	-	8	7	9	104
Gypsy / Traveller	228	34	1	-	37	5	26	331
Other Traveller	31	3	-	-	8	3	9	54
Other	173	18	-	-	171	711	165	1,238
Not known / disclosed	1,918	78	2	2	706	220	9,820	12,746
<b>Total</b>	<b>290,526</b>	<b>9,311</b>	<b>312</b>	<b>294</b>	<b>55,040</b>	<b>7,068</b>	<b>27,709</b>	<b>390,260</b>

Local authority figures on page 52.

## SCOTLAND: PRIMARY

Table 2.10: Primary pupils by ethnicity and stage, 2005

	P1	P2	P3	P4	P5	P6	P7
White – UK	44,437	48,000	51,227	52,096	52,708	53,562	54,364
White – Other	1,222	935	776	740	606	606	601
Mixed	433	485	493	511	469	478	426
Asian – Indian	190	204	197	192	184	182	183
Asian – Pakistani	682	728	719	747	711	713	756
Asian – Bangladeshi	41	53	50	42	48	41	34
Asian – Chinese	180	148	173	158	161	173	174
Asian – Other	226	227	172	171	155	136	150
Black – Caribbean	5	10	10	9	6	8	12
Black – African	172	185	169	168	149	162	142
Black – Other	68	38	48	48	32	38	32
Occupational Traveller	8	18	21	13	16	16	12
Gypsy / Traveller	43	48	52	44	47	45	52
Other Traveller	6	3	8	13	7	7	10
Other	189	179	176	187	172	158	177
Total known	47,902	51,261	54,291	55,139	55,471	56,325	57,125
Not known/disclosed	4,390	2,019	1,116	1,335	1,292	1,318	1,276

Table 2.11: Average primary class sizes by type of class and stage, 1998- 2005<sup>(1)</sup>

Class Type	1998	1999	2000	2001	2002	2003	2004	2005
All	24.9	24.6	24.4	24.3	24.0	23.7	23.9	23.6
Single stage	26.5	26.1	25.7	25.7	25.5	25.1	25.3	25.1
Composite	20.7	20.6	20.5	20.6	20.2	20.1	20.2	19.9
Single stage classes by stage								
P1	24.7	24.0	23.7	23.7	23.5	23.2	23.2	23.1
P2	26.3	25.4	25.0	24.8	24.6	24.3	24.6	24.2
P3	26.9	26.4	26.0	25.3	25.3	24.6	25.1	25.1
P4	27.3	27.0	26.6	26.5	26.3	25.9	26.1	26.0
P5	27.1	27.1	26.7	26.7	26.5	26.2	26.5	26.3
P6	26.8	26.7	26.7	26.7	26.6	26.3	26.2	26.2
P7	26.3	26.0	25.8	26.2	26.0	25.7	25.9	25.4

(1) see background note 6.3.

Local authority figures on page 45 and 46.

## SCOTLAND: PRIMARY

Table 2.12: Average primary class sizes by size of school and type of class, 2005<sup>(1)</sup>

School roll	Number of schools <sup>(1)</sup>	All classes		Single stage classes		Composite classes	
		Number	Average Size	Number	Average Size	Number	Average Size
Scotland	2,194	16,517	24	11,780	25	4,737	20
<20	108	130	10	1	5	129	10
20 – 49	317	716	15	22	5	694	15
50 – 99	314	1,195	19	163	14	1032	20
100 – 149	267	1,611	21	824	20	787	22
150 – 199	307	2,271	23	1,973	24	298	21
200 – 249	277	2,560	24	1,874	25	686	21
250 – 299	203	2,238	25	1,652	25	586	22
300 – 349	141	1,819	25	1,527	26	292	22
350 – 399	134	1,875	27	1,770	27	105	22
400 – 599	113	1,823	27	1,711	28	112	22
600 or more	13	279	28	263	28	16	22

(1) See background note 6.3.

Table 2.13: Number of primary classes and pupils by size and type of class, 2005<sup>(1)</sup>

Class size	Single stage classes				Composite stage classes			
	Classes		Pupils		Classes		Pupils	
	Number	%	Number	%	Number	%	Number	%
Total	11,780		296,034		4,737		94,454	
0 – 15	500	4.2	5,497	1.9	843	17.8	9,070	9.6
16 – 20	1,343	11.4	24,877	8.4	1,087	22.9	19,968	21.1
21 – 25	3,702	31.4	86,293	29.1	2,769	58.5	64,341	68.1
26 – 30	5,044	42.8	141,275	47.7	32	0.7	864	0.9
31 – 33	1,157	9.8	36,827	12.4	4	0.1	128	0.1
>33	34	0.3	1,265	0.4	2	-	83	0.1
Of which: Classes over 30 taught by 2 teachers								
31 – 33	37	3.2	1183	3.2	3	75.0	95	74.2
>33	28	82.4	1061	83.9	2	100.0	83	100.0

(1) See background note 6.3.

Table 2.14: P1 Single stage primary classes by size of class, 2004 & 2005<sup>(1)</sup>

Class size	2004				2005			
	Classes		Pupils		Classes		Pupils	
	Number	%	Number	%	Number	%	Number	%
Total	1,906		44,226		1,889		43,566	
0 – 15	109	5.7	1,220	2.8	120	6.4	1,361	3.1
16 – 20	412	21.6	7,569	17.1	371	19.6	6,818	15.6
21 – 25	704	36.9	16,271	36.8	753	39.9	17,379	39.9
26 – 30	657	34.5	18,369	41.5	631	33.4	17,540	40.3
31 – 33	16	0.8	503	1.1	9	0.5	285	0.7
>33	8	0.4	294	0.7	5	0.3	183	0.4
Of which: Classes over 30 taught by 2 teachers								
31 – 33	11	68.8	346	68.8	7	77.8	223	78.2
>33	8	100.0	294	100.0	4	80.0	149	81.4

(1) See background note 6.3.

Table 2.15: P2 Single stage primary classes by size of class, 2004 & 2005<sup>(1)</sup>

Class size	2004				2005			
	Classes		Pupils		Classes		Pupils	
	Number	%	Number	%	Number	%	Number	%
Total	1,637		40,281		1,598		38,731	
0 – 15	70	4.3	826	2.1	77	4.8	842	2.2
16 – 20	211	12.9	3,905	9.7	213	13.3	3,951	10.2
21 – 25	536	32.7	12,394	30.8	601	37.6	14,001	36.1
26 – 30	804	49.1	22,583	56.1	688	43.1	19,317	49.9
31 – 33	8	0.5	253	0.6	15	0.9	471	1.2
>33	8	0.5	320	0.8	4	0.3	149	0.4
Of which: Classes over 30 taught by 2 teachers								
31 – 33	4	50.0	129	51.0	9	60.0	285	60.5
>33	8	100.0	320	100.0	4	100.0	149	100.0

(1) See background note 6.3.

Table 2.16: P3 Single stage primary classes by size of class, 2004 & 2005<sup>(1)</sup>

Class size	2004				2005			
	Classes		Pupils		Classes		Pupils	
	Number	%	Number	%	Number	%	Number	%
Total	1,637		41,131		1,600		40,110	
0 – 15	50	3.1	498	1.2	71	4.4	785	2.0
16 – 20	157	9.6	2,909	7.1	155	9.7	2,870	7.2
21 – 25	525	32.1	12,231	29.7	496	31.0	11,588	28.9
26 – 30	884	54.0	24,798	60.3	851	53.2	23,968	59.8
31 – 33	15	0.9	478	1.2	22	1.4	694	1.7
>33	6	0.4	217	0.5	5	0.3	205	0.5
Of which: Classes over 30 taught by 2 teachers								
31 – 33	6	40.0	192	40.2	7	31.8	226	32.6
>33	6	100.0	217	100.0	4	80.0	171	83.4

(1) See background note 6.3.

Table 2.17: P4 Single stage primary classes by size of class, 2004 & 2005<sup>(1)</sup>

Class size	2004				2005			
	Classes		Pupils		Classes		Pupils	
	Number	%	Number	%	Number	%	Number	%
Total	1,581		41,322		1,588		41,246	
0 – 15	48	3.0	493	1.2	49	3.1	489	1.2
16 – 20	111	7.0	2,071	5.0	123	7.7	2,287	5.5
21 – 25	443	28.0	10,360	25.1	442	27.8	10,358	25.1
26 – 30	752	47.6	21,161	51.2	747	47.0	20,912	50.7
31 – 33	224	14.2	7,119	17.2	226	14.2	7,165	17.4
>33	3	0.2	118	0.3	1	0.1	35	0.1
Of which: Classes over 30 taught by 2 teachers								
31 – 33	3	1.3	96	1.3	3	1.3	95	1.3
>33	3	100.0	118	100.0	1	100.0	35	100.0

(1) See background note 6.3.

## SCOTLAND: PRIMARY

Table 2.18: P5 Single stage primary classes by size of class, 2004 & 2005<sup>(1)</sup>

Class size	2004				2005			
	Classes		Pupils		Classes		Pupils	
	Number	%	Number	%	Number	%	Number	%
Total	1,596		42,300		1,591		41,816	
0 – 15	45	2.8	506	1.2	62	3.9	671	1.6
16 – 20	126	7.9	2,338	5.5	111	7.0	2,068	4.9
21 – 25	391	24.5	9,159	21.7	401	25.2	9,403	22.5
26 – 30	730	45.7	20,573	48.6	716	45.0	20,067	48.0
31 – 33	299	18.7	9,539	22.6	299	18.8	9,526	22.8
>33	5	0.3	185	0.4	2	0.1	81	0.2
Of which: Classes over 30 taught by 2 teachers								
31 – 33	1	0.3	32	0.3	5	1.7	158	1.7
>33	4	80.0	151	81.6	2	100.0	81	100.0

(1) See background note 6.3.

Table 2.19: P6 Single stage primary classes by size of class, 2004 & 2005<sup>(1)</sup>

Class size	2004				2005			
	Classes		Pupils		Classes		Pupils	
	Number	%	Number	%	Number	%	Number	%
Total	1,639		42,979		1,612		42,166	
0 – 15	49	3.0	481	1.1	54	3.3	562	1.3
16 – 20	154	9.4	2,866	6.7	122	7.6	2,281	5.4
21 – 25	403	24.6	9,399	21.9	442	27.4	10,382	24.6
26 – 30	705	43.0	19,741	45.9	717	44.5	20,081	47.6
31 – 33	325	19.8	10,378	24.1	271	16.8	8,639	20.5
>33	3	0.2	114	0.3	6	0.4	221	0.5
Of which: Classes over 30 taught by 2 teachers								
31 – 33	8	2.5	252	2.4	5	1.8	163	1.9
>33	3	100.0	114	100.0	5	83.3	187	84.6

(1) See background note 6.3.

Table 2.20: P7 Single stage primary classes by size of class, 2004 & 2005<sup>(1)</sup>

Class size	2004				2005			
	Classes		Pupils		Classes		Pupils	
	Number	%	Number	%	Number	%	Number	%
Total	1,899		49,115		1,902		48,399	
0 – 15	56	2.9	629	1.3	67	3.5	787	1.6
16 – 20	237	12.5	4,390	8.9	248	13.0	4,602	9.5
21 – 25	498	26.2	11,547	23.5	567	29.8	13,182	27.2
26 – 30	740	39.0	20,746	42.2	694	36.5	19,390	40.1
31 – 33	359	18.9	11,473	23.4	315	16.6	10,047	20.8
>33	9	0.5	330	0.7	11	0.6	391	0.8
Of which: Classes over 30 taught by 2 teachers								
31 – 33	5	1.4	160	1.4	1	0.3	33	0.3
>33	7	77.8	262	79.4	8	72.7	289	73.9

(1) See background note 6.3.



**Scotland: Secondary****Table 3.1: Schools and pupils in publicly funded secondary schools, 1996-2005**

	Schools	Female	Male	Total
1996 <sup>(1)</sup>	403	157,820	157,916	316,594
1997 <sup>(1)</sup>	401	157,040	157,014	314,889
1998 <sup>(1)</sup>	392	156,043	156,118	313,204
1999	389	157,166	158,190	315,356
2000	389	158,075	159,629	317,704
2001	387	157,134	159,225	316,359
2002	386	157,469	159,434	316,903
2003	386	158,407	160,020	318,427
2004	386	158,540	159,360	317,900
2005	385	157,425	158,415	315,840

(1) There were 858 pupils in 1996, 835 pupils in 1997 and 1,043 pupils in 1998 for whom gender was not recorded. Local authority figures on pages 56 and 57.

**Table 3.2: Secondary schools and pupils by school denomination, 1996-2005**

	Schools			Pupil roll		
	Non-denominational	Roman Catholic	Other denomination	Non-denominational	Roman Catholic	Other denomination
1996	338	65	-	262,746	53,848	-
1997	337	64	-	260,841	54,048	-
1998	331	61	-	259,722	53,482	-
1999	329	60	-	261,187	54,169	-
2000	329	60	-	262,978	54,726	-
2001	328	59	-	262,214	54,145	-
2002	327	59	-	262,792	54,111	-
2003	327	59	-	264,120	54,307	-
2004	327	59	-	263,726	54,174	-
2005	327	58	-	262,121	53,719	-

Local authority figures on page 58.

**Table 3.3: Secondary pupils by stage, 1998 – 2005**

	1998	1999	2000	2001	2002	2003	2004	2005
Number of pupils								
S1	60,766	61,844	61,106	59,341	61,572	62,398	60,748	58,879
S2	60,903	60,844	61,853	61,133	59,275	61,673	62,436	60,817
S3	60,109	61,205	61,014	62,175	61,447	59,718	62,112	62,732
S4	58,652	59,250	60,138	59,998	61,035	60,446	58,871	61,190
S5	45,413	46,253	46,831	47,320	46,198	47,198	46,715	45,440
S6	26,318	25,960	26,762	26,392	27,372	26,993	27,018	26,782
Stage not known <sup>(1)</sup>	1,043	-	-	-	4	1	-	-

(1) In 1998 these figures represent pupils attending special units, where stage was unknown. Between 1999 and 2002, stage was recorded for these pupils. In 2002 and 2003, this figure represents pupils where stage was not recorded. Local authority figures on page 59.

## SCOTLAND: SECONDARY

Table 3.4a: Secondary pupils (total) by age at 28<sup>th</sup> February 2006 and stage, as at September 2005<sup>(1)</sup>

	S1	S2	S3	S4	S5	S6
11	213	-	-	-	-	-
12	55,248	252	-	-	-	-
13	3,397	57,182	285	-	-	-
14	19	3,349	58,757	326	-	-
15	-	31	3,638	57,702	389	-
16	-	-	49	3,123	43,284	276
17	-	-	-	34	1,737	25,449
18	-	-	-	-	27	1,033
19	-	-	-	-	-	20

(1) There were 20 pupils for whom age was outwith the shown range.

Table 3.4b: Secondary pupils (female) by age at 28<sup>th</sup> February 2006 and stage, as at September 2005<sup>(1)</sup>

	S1	S2	S3	S4	S5	S6
11	134	-	-	-	-	-
12	27,545	159	-	-	-	-
13	1,270	28,392	167	-	-	-
14	6	1,258	29,149	197	-	-
15	-	13	1,429	28,612	224	-
16	-	-	21	1,252	22,400	164
17	-	-	-	14	738	13,812
18	-	-	-	-	9	438
19	-	-	-	-	-	9

(1) There were 13 pupils for whom age was outwith the shown range.

Table 3.4c: Secondary pupils (male) by age at 28<sup>th</sup> February 2006 and stage, as at September 2005<sup>(1)</sup>

	S1	S2	S3	S4	S5	S6
11	79	-	-	-	-	-
12	27,703	93	-	-	-	-
13	2,127	28,790	118	-	-	-
14	13	2,091	29,608	129	-	-
15	-	18	2,209	29,090	165	-
16	-	-	28	1,871	20,884	112
17	-	-	-	20	999	11,637
18	-	-	-	-	18	595
19	-	-	-	-	-	11

(1) There were 7 pupils for whom age was outwith the shown range.

## SCOTLAND: SECONDARY

Table 3.5a: Integration of secondary pupils (total) with a Record of Needs and/or an Individualised Educational Programme, 2004 and 2005

Nature of attendance	All pupils with RoN and/or IEP	With RoN only	With IEP only	With both RoN and IEP
2004	10,794	1,047	6,027	3,720
2005	12,019	876	7,550	3,593
Time spent by pupils in mainstream classes				
All the time in mainstream classes	9,542	794	6,435	2,313
$\frac{3}{4}$ or more but less than all time in mainstream classes	995	55	576	364
$\frac{1}{2}$ or more but less than $\frac{3}{4}$ of the time in mainstream classes	520	12	194	314
$\frac{1}{4}$ or more but less than $\frac{1}{2}$ of the time in mainstream classes	272	6	87	179
Some time, but less than $\frac{1}{4}$ of the time in mainstream classes	240	3	58	179
No time in mainstream classes	450	6	200	244

Local authority figures on page 62.

Table 3.5b: Integration of secondary pupils (female) with a Record of Needs and/or an Individualised Educational Programme, 2004 and 2005

Nature of attendance	All pupils with RoN and/or IEP	With RoN only	With IEP only	With both RoN and IEP
2004	3,258	341	1,732	1,185
2005	3,643	289	2,250	1,104
Time spent by pupils in mainstream classes				
All the time in mainstream classes	2,873	261	1,945	667
$\frac{3}{4}$ or more but less than all time in mainstream classes	309	19	160	130
$\frac{1}{2}$ or more but less than $\frac{3}{4}$ of the time in mainstream classes	175	4	63	108
$\frac{1}{4}$ or more but less than $\frac{1}{2}$ of the time in mainstream classes	79	2	20	57
Some time, but less than $\frac{1}{4}$ of the time in mainstream classes	72	1	14	57
No time in mainstream classes	135	2	48	85

Table 3.5c: Integration of secondary pupils (male) with a Record of Needs and/or an Individualised Educational Programme, 2004 and 2005

Nature of attendance	All pupils with RoN and/or IEP	With RoN only	With IEP only	With both RoN and IEP
2004	7,536	706	4,295	2,535
2005	8,376	587	5,300	2,489
Time spent by pupils in mainstream classes				
All the time in mainstream classes	6,669	533	4,490	1,646
$\frac{3}{4}$ or more but less than all time in mainstream classes	686	36	416	234
$\frac{1}{2}$ or more but less than $\frac{3}{4}$ of the time in mainstream classes	345	8	131	206
$\frac{1}{4}$ or more but less than $\frac{1}{2}$ of the time in mainstream classes	193	4	67	122
Some time, but less than $\frac{1}{4}$ of the time in mainstream classes	168	2	44	122
No time in mainstream classes	315	4	152	159

## SCOTLAND: SECONDARY

Table 3.6: Main difficulty in learning of secondary pupils with a Record of Needs and/or an Individualised Educational Programme, 2005

Impairment	Female	Male	Total	Rate per 1,000 pupils		
				Female	Male	Total
Total	3,643	8,376	12,019	23.1	52.9	38.1
Significant hearing impairment	110	152	262	0.7	1.0	0.8
Significant visual impairment	77	86	163	0.5	0.5	0.5
Significant physical or motor impairments	190	309	499	1.2	2.0	1.6
Significant language and speech disorder	90	232	322	0.6	1.5	1.0
Autistic spectrum disorder	103	722	825	0.7	4.6	2.6
Social, emotional and behavioural difficulties	434	1,500	1,934	2.8	9.5	6.1
Learning difficulties:						
Moderate	986	1,495	2,481	6.3	9.4	7.9
Severe	88	146	234	0.6	0.9	0.7
Profound	9	16	25	0.1	0.1	0.1
Specific – in language and/or mathematics (including dyslexia)	947	2,593	3,540	6.0	16.4	11.2
Complex or multiple impairments:						
Dual sensory impairment	6	10	16	0.0	0.1	0.1
Moderate learning difficulties & significant additional impairments or disorders	134	284	418	0.9	1.8	1.3
Severe learning difficulties & significant additional impairments or disorders	50	70	120	0.3	0.4	0.4
Profound learning difficulties & significant additional impairments or disorders	19	19	38	0.1	0.1	0.1
Other	390	734	1,124	2.5	4.6	3.6
Not known / Not disclosed	10	8	18	0.1	0.1	0.1

Local authority figures on page 60.

Table 3.7: Secondary pupils registered for free school meals, 2002 to 2005

	2002	2003	2004	2005
Number of pupils	316,903	318,427	317,900	315,840
Registered	47,355	47,157	45,853	43,820
Not registered	269,548	271,270	272,047	272,020

## SCOTLAND: SECONDARY

Table 3.8: Secondary pupils registered for free school meals by stage and gender, 2005

	All Pupils	Pupils registered for free school meals			Overall % registered for free school meals
		Female	Male	Total	
S1	58,879	4,802	4,927	9,729	16.5
S2	60,817	4,789	4,926	9,715	16.0
S3	62,732	4,743	4,800	9,543	15.2
S4	61,190	4,311	4,283	8,594	14.0
S5	45,440	2,494	2,245	4,739	10.4
S6	26,782	864	636	1,500	5.6

Table 3.9: Secondary pupil ethnicity and national identity, 2005

	Scottish	English	Northern Irish	Welsh	British	Other	Not known / not disclosed	Total
White – UK	228,473	6,881	265	265	38,566	1,397	17,756	293,603
White – Other	1,181	60	9	1	457	1,159	468	3,335
Mixed	1,154	85	2	6	422	119	78	1,866
Asian – Indian	321	18	2	-	316	124	91	872
Asian – Pakistani	1,230	51	1	1	1,423	221	595	3,522
Asian – Bangladeshi	45	9	-	-	63	35	31	183
Asian – Chinese	357	21	2	-	401	196	116	1,093
Asian – Other	94	10	-	1	111	363	81	660
Black – Caribbean	11	8	1	-	8	7	8	43
Black – African	50	8	-	-	70	402	143	673
Black – Other	54	7	-	-	34	65	41	201
Occupational Traveller	53	-	-	-	8	7	3	71
Gypsy / Traveller	65	2	-	-	7	3	5	82
Other Traveller	15	1	-	-	1	2	2	21
Other	231	14	-	-	172	382	195	994
Not known / disclosed	1,709	44	3	-	700	300	5,865	8,621
<b>Total</b>	<b>235,043</b>	<b>7,219</b>	<b>285</b>	<b>274</b>	<b>42,759</b>	<b>4,782</b>	<b>25,478</b>	<b>315,840</b>

Local authority figures on page 64.

## SCOTLAND: SECONDARY

Table 3.10: Secondary pupils by ethnicity and stage, 2005

	S1	S2	S3	S4	S5	S6
White – UK	55,151	57,124	58,511	56,308	42,017	24,492
White – Other	575	533	531	732	582	382
Mixed	404	388	351	286	246	191
Asian – Indian	149	154	170	146	137	116
Asian – Pakistani	663	671	714	594	510	370
Asian – Bangladeshi	31	34	32	37	22	27
Asian – Chinese	195	181	180	194	174	169
Asian – Other	124	115	128	126	106	61
Black – Caribbean	7	6	7	10	9	4
Black – African	134	117	108	131	100	83
Black – Other	39	33	31	42	34	22
Occupational Traveller	15	17	17	13	7	2
Gypsy / Traveller	27	21	16	13	4	1
Other Traveller	5	4	8	1	1	2
Other	180	167	212	173	165	97
Total known	57,699	59,565	61,016	58,806	44,114	26,019
Not known / disclosed	1,180	1,252	1,716	2,384	1,326	763

Table 3.11: Staying-on rates of secondary pupils, 1996 – 2005<sup>(1)</sup>

	Female			Male			All pupils		
	S3-S5	Christmas	S3-S6	S3-S5	Christmas	S3-S6	S3-S5	Christmas	S3-S6
1996	..	..	..	..	..	..	76.5	66.9	42.2
1997	..	..	..	..	..	..	76.5	67.1	41.6
1998	79.5	71.9	..	72.6	63.2	..	76.0	67.5	42.2
1999	81.3	73.1	47.4	74.0	64.0	39.6	77.6	68.4	43.4
2000	81.2	72.2	48.8	74.7	64.0	41.2	77.9	68.1	44.9
2001	80.1	71.4	47.3	74.6	64.1	40.5	77.3	67.7	43.9
2002	79.2	71.4	48.0	72.4	63.4	41.6	75.7	67.3	44.7
2003	79.5	71.7	48.0	72.4	62.8	40.7	75.9	67.1	44.2
2004	79.9	72.0	48.0	72.3	62.6	39.1	76.0	67.2	43.5
2005	79.6	..	47.9	72.7	..	39.4	76.1	..	43.6

(1) The S5 stage staying-on rates are based on S3 pupils 2 years earlier, and S6 rates on S3 pupils 3 years earlier.

Post Christmas staying-on rates are calculated as a percentage of the post Christmas S5 roll divided by the S3 roll 2 years earlier. The post Christmas role in S5 is calculated by subtracting the number of first term leavers in S5 from the September S5 roll.

1996-98 stage roll data used to calculate staying-on rates excludes pupils in special units.

1999-05 stage roll data used to calculate staying-on rates includes pupils in special units.

School Leavers data for 2005/06 is not yet available and so post Christmas staying on rates cannot be calculated.

Local authority figures on page 67.

**Scotland: Special**

Table 4.1: Schools and pupils in publicly funded special schools, 1996-2005

	Schools	Female	Male	Total
1996	158	..	..	8,077
1997	158	2,872	5,184	8,056
1998	185	2,885	5,346	8,231
1999	195	2,871	5,440	8,311
2000	195	2,847	5,471	8,318
2001	197	2,755	5,428	8,183
2002 <sup>(1)</sup>	191	2,605	5,300	7,981
2003	194	2,531	5,149	7,680
2004	192	2,381	5,008	7,389
2005	190	2,302	4,838	7,140

(1) There were 76 pupils in 2002 for whom gender was not known.  
Local authority figures on pages 69 and 70.

Table 4.2: Special schools and pupils by school denomination, 1996-2005

	Schools			Pupil roll		
	Non-denominational	Roman Catholic	Other denomination	Non-denominational	Roman Catholic	Other denomination
1996	137	7	14	6,975	461	641
1997	136	7	15	6,960	469	627
1998	156	7	22	7,035	477	719
1999	161	7	27	6,998	491	822
2000	161	7	27	7,000	497	821
2001	162	6	29	6,861	472	850
2002	156	6	29	6,701	436	844
2003	162	7	25	6,546	424	710
2004	160	7	25	6,260	406	723
2005	158	7	25	6,069	364	707

Local authority figures on page 71.

LOCAL AUTHORITY: SPECIAL

Table 4.3: Pupils based in special schools by age at 28<sup>th</sup> February 2006 and gender, 2005

Age	All pupils			Pupils with RoN and/or IEP		
	Female	Male	Total	Female	Male	Total
All ages	2,302	4,838	7,140	2,270	4,767	7,037
4	22	36	58	20	36	56
5	90	181	271	82	173	255
6	108	250	358	107	243	350
7	111	278	389	111	276	387
8	134	304	438	133	301	434
9	119	306	425	118	303	421
10	123	315	438	123	313	436
11	156	347	503	155	345	500
12	165	384	549	165	378	543
13	212	461	673	211	457	668
14	238	523	761	238	517	755
15	286	525	811	278	514	792
16	211	493	704	206	478	684
17	208	295	503	208	294	502
18	93	109	202	93	109	202
19	11	12	23	11	12	23
Other	15	19	34	11	18	29

Local authority figures on page 72.

Table 4.4: Integration of pupils based in special schools, by gender, 2004 & 2005

Nature of attendance	All pupils	Female	Male
2004	7,389	2,381	5,008
2005	7,140	2,302	4,838
Time spent by pupils in mainstream classes			
All the time in mainstream classes	41	15	26
¾ or more but less than all time in mainstream classes	5	1	4
½ or more but less than ¾ of the time in mainstream classes	87	38	49
¼ or more but less than ½ of the time in mainstream classes	86	33	53
Some time, but less than ¼ of the time in mainstream classes	184	56	128
No time in mainstream classes	6,737	2,159	4,578

Local authority figures on page 76.



LOCAL AUTHORITY: SPECIAL

Table 4.5: Main difficulty in learning of pupils based in special schools with a Record of Needs and/or an Individualised Educational Programme, 2005

Impairment	Female	Male	Total	Rate per 1,000 pupils		
				Female	Male	Total
Total	2,270	4,767	7,037	986.1	985.3	985.6
Significant hearing impairment	53	81	134	23.0	16.7	18.8
Significant visual impairment	82	100	182	35.6	20.7	25.5
Significant physical or motor impairments	114	151	265	49.5	31.2	37.1
Significant language and speech disorder	32	126	158	13.9	26.0	22.1
Autistic spectrum disorder	144	779	923	62.6	161.0	129.3
Social, emotional and behavioural difficulties	77	560	637	33.4	115.8	89.2
Learning difficulties:						
Moderate	600	1,102	1,702	260.6	227.8	238.4
Severe	246	342	588	106.9	70.7	82.4
Profound	32	31	63	13.9	6.4	8.8
Specific – in language and/or mathematics (including dyslexia)	16	43	59	7.0	8.9	8.3
Complex or multiple impairments:						
Dual sensory impairment	9	12	21	3.9	2.5	2.9
Moderate learning difficulties & significant additional impairments or disorders	273	511	784	118.6	105.6	109.8
Severe learning difficulties & significant additional impairments or disorders	279	466	745	121.2	96.3	104.3
Profound learning difficulties & significant additional impairments or disorders	199	214	413	86.4	44.2	57.8
Other	114	249	363	49.5	51.5	50.8
Not known / Not disclosed	-	-	-	-	-	-

Local authority figures on page 74.

Table 4.6: Pupils based in special schools, registered for free school meals<sup>(1)</sup>, 2002 to 2005

	2002 <sup>(2)</sup>	2003	2004	2005
Number of pupils	7,498	7,267	7,010	6,780
Registered	3,712	4,100	4,016	3,715
Not registered	3,786	3,167	2,994	3,065

(1) Excludes pupils in grant-aided special schools.

(2) Excludes a further two centres which did not submit data.

LOCAL AUTHORITY: SPECIAL

Table 4.7: Pupils based in special schools by gender and mode of attendance, 2000 - 2005

	2000	2001	2002 <sup>(1)</sup>	2003	2004	2005
Total	8,318	8,183	7,905	7,680	7,389	7,140
Female	2,847	2,755	2,605	2,531	2,381	2,302
Male	5,471	5,428	5,300	5,149	5,008	4,838
Percentage female	34.2	33.7	33.0	33.0	32.2	32.2
Day						
Total	8,094	7,985	7,687	7,322	7,177	6,949
Female	2,767	2,682	2,532	2,422	2,307	2,237
Male	5,327	5,303	5,155	4,900	4,870	4,712
Residential						
Total	224	198	194	188	190	191
Female	80	73	69	67	71	65
Male	144	125	125	121	119	126
Not known						
Total	-	-	24	170	22	-
Female	-	-	4	42	3	-
Male	-	-	20	128	19	-
<i>% residential (of those known)</i>						
<i>Total</i>	<i>2.7</i>	<i>2.4</i>	<i>2.5</i>	<i>2.5</i>	<i>2.6</i>	<i>2.7</i>
<i>Female</i>	<i>2.8</i>	<i>2.6</i>	<i>2.7</i>	<i>2.7</i>	<i>3.0</i>	<i>2.9</i>
<i>Male</i>	<i>2.6</i>	<i>2.3</i>	<i>2.4</i>	<i>2.4</i>	<i>2.4</i>	<i>2.7</i>

(1) Excludes two centres that did not submit data.

Table 4.8: Pupils based in special schools ethnicity by national identity, 2005<sup>(1)</sup>

	Scottish	All other categories	Not known /not disclosed	Total
White - UK & White - Other	4,577	1,182	408	6,167
Minority ethnic groupings	108	167	42	317
Not known / not disclosed	30	41	225	296
<b>Total</b>	<b>4,715</b>	<b>1,390</b>	<b>675</b>	<b>6,780</b>

(1) Excludes pupils in grant-aided special schools. Local authority figures on page 78.

**Local Authority: All Sectors**

Table 5.1: Publicly funded schools, 1997-2005

	1997	1998	1999	2000	2001	2002	2003	2004	2005
Aberdeen City	84	82	82	81	81	78	79	79	79
Aberdeenshire	182	182	181	179	178	177	176	176	173
Angus	71	70	70	69	68	68	68	67	65
Argyll & Bute	100	98	99	100	100	100	99	98	98
Clackmannanshire	24	24	24	24	24	24	26	26	26
Dumfries & Galloway	134	134	135	133	133	130	130	129	125
Dundee City	52	52	52	52	52	52	52	52	51
East Ayrshire	62	61	60	60	60	63	63	63	63
East Dunbartonshire	48	52	52	54	54	53	51	51	53
East Lothian	41	41	41	41	41	41	41	41	42
East Renfrewshire	32	32	32	33	33	32	32	32	32
Edinburgh City	139	139	139	138	138	141	137	136	130
Eilean Siar	56	56	56	55	52	50	50	50	49
Falkirk	60	63	63	63	63	62	62	62	62
Fife	176	182	182	182	183	182	181	179	178
Glasgow City	277	276	281	281	283	277	273	259	256
Highland	222	223	225	223	219	218	219	218	219
Inverclyde	43	43	44	44	45	45	44	39	38
Midlothian	45	46	46	46	44	44	44	43	44
Moray	60	59	57	54	54	54	54	54	54
North Ayrshire	66	66	66	67	67	67	67	67	67
North Lanarkshire	170	172	171	167	167	167	168	168	167
Orkney Islands	29	29	29	28	28	28	28	27	27
Perth & Kinross	90	89	90	90	90	90	89	88	88
Renfrewshire	70	70	70	70	69	68	68	68	67
Scottish Borders	81	82	83	82	82	82	82	79	76
Shetland Islands	43	43	44	44	44	42	42	42	41
South Ayrshire	58	58	58	58	58	58	57	57	57
South Lanarkshire	155	154	155	155	155	155	155	155	153
Stirling	55	56	56	56	56	53	55	53	53
West Dunbartonshire	45	45	45	44	44	44	45	44	44
West Lothian	80	80	80	80	81	81	82	84	83
All local authorities	2,850	2,859	2,868	2,853	2,846	2,826	2,819	2,786	2,760
Grant aided	9	9	9	9	9	9	9	9	9

National figures on page 10.

## LOCAL AUTHORITY: ALL SECTORS

Table 5.2: Pupils in publicly funded schools, 1997-2005

	1997	1998	1999	2000	2001	2002	2003	2004	2005
Aberdeen City	27,565	27,250	26,988	26,357	25,853	24,999	24,448	23,958	23,465
Aberdeenshire	36,981	37,058	36,931	36,579	36,239	36,160	36,135	36,152	35,815
Angus	16,643	16,586	16,626	16,523	16,408	16,290	16,319	16,211	16,098
Argyll & Bute	13,459	13,442	13,426	13,263	13,016	12,976	12,927	12,847	12,520
Clackmannanshire	7,556	7,521	7,489	7,486	7,430	7,312	7,222	7,195	7,109
Dumfries & Galloway	22,564	22,503	22,327	22,293	22,045	21,851	21,528	21,337	20,941
Dundee City	21,501	21,155	20,761	20,462	20,272	19,803	19,434	18,964	18,649
East Ayrshire	19,556	19,442	19,174	19,022	18,808	18,662	18,467	18,313	17,891
East Dunbartonshire	19,451	19,380	19,432	19,431	19,258	19,026	18,867	18,319	17,608
East Lothian	12,795	12,913	13,127	13,316	13,494	13,532	13,518	13,541	13,467
East Renfrewshire	15,429	15,723	15,889	16,083	16,137	16,314	16,374	16,352	16,346
Edinburgh City	50,118	49,977	50,104	49,681	49,322	48,739	47,927	47,058	46,353
Eilean Siar	4,586	4,433	4,305	4,216	4,166	4,153	4,110	4,018	4,010
Falkirk	21,229	21,204	21,280	21,271	21,246	21,170	21,355	21,376	21,275
Fife	54,065	53,388	53,190	53,195	52,638	52,079	51,455	50,850	50,039
Glasgow City	80,371	78,381	77,567	76,580	75,664	74,535	73,076	71,362	69,799
Highland	34,176	33,962	33,629	33,588	33,326	33,112	33,065	32,858	32,617
Inverclyde	13,873	13,505	13,376	13,299	12,993	12,757	12,482	12,203	11,890
Midlothian	12,990	12,894	12,967	13,020	12,997	12,777	12,710	12,412	12,266
Moray	13,806	13,780	13,695	13,540	13,562	13,660	13,727	13,675	13,506
North Ayrshire	21,971	21,827	21,670	21,579	21,382	21,374	21,174	20,789	20,416
North Lanarkshire	53,558	53,238	52,863	52,505	52,113	51,842	51,579	51,096	50,525
Orkney Islands	3,288	3,218	3,166	3,155	3,130	3,168	3,133	3,111	3,057
Perth & Kinross	18,349	18,590	18,542	18,489	18,366	18,438	18,407	18,230	18,388
Renfrewshire	27,730	27,597	27,511	27,389	27,058	26,820	26,418	25,887	25,413
Scottish Borders	15,463	15,449	15,532	15,721	15,760	15,779	15,696	15,663	15,558
Shetland Islands	3,929	3,918	3,858	3,785	3,751	3,740	3,679	3,655	3,617
South Ayrshire	17,460	17,308	17,136	16,933	16,669	16,347	16,265	15,876	15,635
South Lanarkshire	48,046	47,773	47,558	47,235	46,636	46,212	45,781	45,620	45,026
Stirling	12,550	12,601	12,639	12,794	12,853	12,870	12,994	13,052	12,978
West Dunbartonshire	15,938	15,797	15,639	15,400	15,057	14,810	14,419	14,071	13,679
West Lothian	25,102	25,173	25,255	25,617	25,969	25,840	25,968	25,910	25,880
All local authorities	762,098	756,986	753,652	749,807	743,618	737,147	730,659	721,961	711,836
Grant aided	1,441	1,428	1,429	1,436	1,445	1,450	1,463	1,428	1,404

National figures on page 10.

## LOCAL AUTHORITY: ALL SECTORS

Table 5.3: Looked after children in publicly funded schools by age and local authority of residence<sup>(1)</sup>

Local Authority of Residence	Looked after children as indicated in results of school census collection <sup>(2)</sup>		Looked after children from results of children's social work statistics survey <sup>(3)</sup>	
	5-11yrs	12-15yrs	5-11yrs	12-15yrs
Aberdeen City	97	90	164	197
Aberdeenshire	121	96	113	117
Angus	58	64	72	68
Argyll & Bute	55	36	70	108
Clackmannanshire	38	34	57	41
Dumfries & Galloway	128	114	124	137
Dundee City	142	141	146	165
East Ayrshire	127	100	138	113
East Dunbartonshire	20	11	34	34
East Lothian	48	63	38	73
East Renfrewshire	25	14	29	19
Edinburgh City	376	323	434	399
Eilean Siar	19	18	9	21
Falkirk	60	43	82	103
Fife	145	130	212	207
Glasgow City	714	390	905	815
Highland	113	106	107	144
Inverclyde	32	33	96	94
Midlothian	69	57	90	91
Moray	48	51	41	63
North Ayrshire	176	126	160	137
North Lanarkshire	309	163	236	246
Orkney Islands	4	9	7	9
Perth & Kinross	40	47	59	70
Renfrewshire	85	60	204	149
Scottish Borders	62	48	51	63
Shetland Islands	14	17	12	11
South Ayrshire	104	96	88	93
South Lanarkshire	213	131	150	170
Stirling	44	43	51	65
West Dunbartonshire	71	57	109	126
West Lothian	118	117	169	139
All local authorities	3,675	2,828	4,257	4,287
Not available	91	63	-	-

(1) Pupils may not attend a school in the local authority in which they are looked after.

(2) Does not include grant aided special schools

(3) As at 31<sup>st</sup> March 2005 therefore unlikely to match the pupil census figures exactly.

LOCAL AUTHORITY: ALL SECTORS

Table 5.4: Asylum seekers and refugees in publicly funded schools, 2005<sup>(1)</sup>

	Asylum seekers	Refugees
Aberdeen City	*	*
Aberdeenshire	-	-
Angus	-	-
Argyll & Bute	-	-
Clackmannanshire	-	-
Dumfries & Galloway	-	-
Dundee City	*	*
East Ayrshire	-	*
East Dunbartonshire	-	5
East Lothian	*	*
East Renfrewshire	*	*
Edinburgh City	31	40
Eilean Siar	-	-
Falkirk	*	-
Fife	9	*
Glasgow City	1,561	549
Highland	*	-
Inverclyde	-	-
Midlothian	*	*
Moray	-	-
North Ayrshire	-	-
North Lanarkshire	6	*
Orkney Islands	-	-
Perth & Kinross	*	*
Renfrewshire	*	6
Scottish Borders	*	-
Shetland Islands	*	-
South Ayrshire	*	*
South Lanarkshire	*	*
Stirling	-	-
West Dunbartonshire	*	*
West Lothian	-	-
All local authorities	1,633	624
Grant aided	-	-

(1) Does not include grant aided special schools.

LOCAL AUTHORITY: ALL SECTORS

Table 5.5 : Pupils from minority ethnic groups<sup>(1)</sup>, 2002-2005

	Minority ethnic group <sup>(2)</sup>				Not known/not disclosed			
	2002	2003	2004	2005	2002	2003	2004	2005
Aberdeen City	930	1,085	1,189	1,251	3,161	2,223	1,507	1,077
Aberdeenshire	342	386	418	455	2,856	1,817	1,124	668
Angus	696	177	177	193	4,186	3,255	3,462	1,967
Argyll & Bute	140	155	154	187	549	525	428	437
Clackmannanshire	77	87	115	127	511	320	177	100
Dumfries & Galloway	280	307	302	332	1,439	668	627	524
Dundee City	770	809	876	926	2,288	1,897	1,583	1,176
East Ayrshire	204	208	209	219	203	241	288	376
East Dunbartonshire	868	1,003	1,029	958	634	428	285	240
East Lothian	158	174	190	205	1,600	1,183	871	561
East Renfrewshire	1,252	1,366	1,459	1,572	453	284	235	287
Edinburgh City	3,307	3,539	3,722	3,934	2,053	1,383	994	737
Eilean Siar	53	52	57	54	673	361	172	44
Falkirk	346	407	461	455	1,869	1,137	818	607
Fife	852	935	991	1,099	3,316	1,493	1,075	856
Glasgow City	6,886	7,444	7,713	7,943	2,685	2,149	1,941	2,074
Highland	373	417	450	516	1,095	918	661	551
Inverclyde	151	230	238	207	330	103	334	262
Midlothian	177	193	204	223	1,388	827	719	568
Moray	162	176	183	192	334	237	188	138
North Ayrshire	228	290	281	294	483	471	571	434
North Lanarkshire	948	1,023	1,113	1,177	1,257	1,087	1,007	1,303
Orkney Islands	14	21	24	28	499	394	287	271
Perth & Kinross	149	214	233	298	6,020	4,171	3,986	2,645
Renfrewshire	472	509	575	581	714	465	385	499
Scottish Borders	137	162	169	182	761	238	265	312
Shetland Islands	59	56	40	47	111	134	80	75
South Ayrshire	173	189	299	279	289	356	330	391
South Lanarkshire	828	1,072	1,091	1,104	815	725	858	877
Stirling	241	273	299	321	402	261	153	84
West Dunbartonshire	122	143	162	172	726	459	465	361
West Lothian	501	528	564	614	2,249	1,423	1,180	1,150
All local authorities	21,896	23,630	24,987	26,145	45,949	31,633	27,056	21,652
Grant aided	70	73	79	87	1	5	10	11

(1) Excludes grant aided special schools.

(2) Minority ethnic group includes all categories other than white-UK and white-other or unknown/not disclosed.  
National figures on page 13.

## LOCAL AUTHORITY: ALL SECTORS

Table 5.6: Pupils, by Scottish Index of Multiple Deprivation, 2005

	Most Deprivation					Least Deprivation				
	1	2	3	4	5	6	7	8	9	10
Aberdeen City	1,179	1,596	2,399	2,607	1,637	1,535	1,116	1,888	2,681	6,707
Aberdeenshire	140	255	413	759	2,947	4,399	5,477	8,050	7,083	6,075
Angus	17	795	668	1,714	1,633	2,800	3,004	2,168	2,210	1,053
Argyll & Bute	586	444	1,326	1,473	2,308	2,465	1,689	815	843	433
Clackmannanshire	581	1,492	724	583	1,004	1,265	312	505	447	155
Dumfries & Galloway	460	1,470	1,125	3,611	4,084	3,960	2,029	2,619	973	446
Dundee City	4,168	4,310	1,796	1,435	614	914	860	1,889	1,723	857
East Ayrshire	1,804	3,198	2,797	2,951	1,606	901	1,351	971	1,574	623
East Dunbartonshire	1,035	591	1,267	1,283	1,045	590	971	1,686	3,663	5,318
East Lothian	5	435	825	1,759	1,788	1,300	2,040	2,598	1,106	1,515
East Renfrewshire	695	810	586	566	968	982	1,128	1,432	2,898	6,122
Edinburgh City	6,147	2,829	4,323	2,394	2,128	2,640	3,041	3,723	5,285	13,417
Eilean Siar	-	-	632	1,503	1,334	506	-	-	-	-
Falkirk	618	2,334	3,070	3,447	2,642	1,289	1,765	2,889	1,382	1,639
Fife	1,390	6,330	5,898	5,154	5,178	5,490	5,354	5,056	5,658	4,213
Glasgow City	36,941	6,677	5,965	3,968	2,989	3,112	2,216	2,932	2,225	1,006
Highland	919	1,157	2,394	4,396	5,816	5,606	5,157	3,196	2,859	882
Inverclyde	2,339	2,653	1,038	906	878	802	1,121	933	698	380
Midlothian	32	773	1,527	1,696	1,789	1,191	1,751	1,016	900	1,521
Moray	-	-	105	704	1,773	2,972	2,258	2,827	1,418	1,123
North Ayrshire	1,916	4,446	3,940	1,922	1,344	1,683	1,799	1,111	1,886	289
North Lanarkshire	5,905	12,833	7,767	5,347	5,705	2,812	2,911	2,940	3,436	397
Orkney Islands	-	-	-	286	105	959	943	281	466	-
Perth & Kinross	302	337	931	1,223	1,043	2,024	3,724	4,101	2,253	2,319
Renfrewshire	2,978	4,140	2,757	1,938	2,483	1,281	1,938	2,260	3,758	1,608
Scottish Borders	178	417	503	455	1,845	3,055	4,059	2,360	1,829	672
Shetland Islands	-	-	-	-	107	856	1,713	567	356	-
South Ayrshire	838	1,390	1,760	2,234	2,627	1,258	1,251	988	1,806	1,387
South Lanarkshire	5,062	5,215	4,575	5,376	4,274	5,535	4,371	3,140	4,735	2,265
Stirling	617	465	1,556	778	1,403	784	1,209	2,887	2,096	1,084
West Dunbartonshire	2,868	2,752	2,210	1,892	712	1,185	800	752	327	16
West Lothian	265	3,210	4,139	4,293	2,557	2,208	1,853	1,244	2,622	3,268
All local authorities	79,985	73,354	69,016	68,653	68,366	68,359	69,211	69,824	71,196	66,790

(1) The data here refers to the area of residence of the pupils categorised by their school's local authority (rather than the local authority in which they live). SIMD data is not available for 7,089 pupils. Also see background note 8.3.



**Local Authority: Primary**

Table 6.1: Publicly funded primary schools, 1997-2005

	1997	1998	1999	2000	2001	2002	2003	2004	2005
Aberdeen City	61	58	58	57	57	57	56	56	56
Aberdeenshire	160	158	157	156	156	156	155	155	152
Angus	62	62	62	61	60	60	60	59	57
Argyll & Bute	87	85	86	87	87	87	86	85	85
Clackmannanshire	19	19	19	19	19	19	19	19	19
Dumfries & Galloway	116	116	116	114	114	111	110	109	107
Dundee City	41	41	41	41	41	41	41	41	40
East Ayrshire	47	47	47	47	47	47	47	47	47
East Dunbartonshire	37	37	37	37	37	37	37	37	37
East Lothian	35	35	35	35	35	35	35	35	35
East Renfrewshire	24	24	24	24	24	24	24	24	24
Edinburgh City	103	103	103	102	102	102	98	97	94
Eilean Siar	43	43	43	42	40	39	39	39	38
Falkirk	48	48	48	48	48	48	48	48	48
Fife	146	146	146	146	146	146	145	144	143
Glasgow City	203	203	203	203	203	197	197	184	180
Highland	191	192	194	192	187	185	184	183	184
Inverclyde	32	32	32	32	32	32	32	27	26
Midlothian	36	36	36	36	36	36	36	35	35
Moray	49	49	49	46	46	46	46	46	46
North Ayrshire	52	52	52	53	53	53	53	53	53
North Lanarkshire	134	134	133	130	130	130	131	131	130
Orkney Islands	22	22	22	21	21	21	21	21	21
Perth & Kinross	78	77	78	78	78	78	77	76	76
Renfrewshire	52	52	52	52	52	52	52	52	52
Scottish Borders	72	72	72	71	71	71	71	68	65
Shetland Islands	34	34	34	34	34	33	33	33	32
South Ayrshire	45	45	45	45	45	45	45	45	45
South Lanarkshire	125	125	125	125	125	125	125	125	125
Stirling	45	43	43	43	43	43	43	42	42
West Dunbartonshire	35	35	35	35	35	35	35	34	34
West Lothian	65	65	65	65	66	66	66	66	65
All local authorities	2,299	2,290	2,292	2,277	2,270	2,257	2,247	2,216	2,193
Grant aided	1	1	1	1	1	1	1	1	1

National figures on page 16.

## LOCAL AUTHORITY: PRIMARY

Table 6.2: Pupils in publicly funded primary schools, 2000-2005

	2000	2001	2002	2003	2004	2005		
						Female	Male	Total
Aberdeen City	15,000	14,555	14,082	13,623	13,234	6,153	6,662	12,815
Aberdeenshire	20,916	20,614	20,370	20,190	20,018	9,538	10,198	19,736
Angus	9,315	9,295	9,323	9,215	9,129	4,460	4,604	9,064
Argyll & Bute	7,616	7,371	7,283	7,137	6,949	3,248	3,493	6,741
Clackmannanshire	4,361	4,342	4,303	4,194	4,084	2,007	2,023	4,030
Dumfries & Galloway	12,504	12,391	12,138	11,915	11,724	5,562	5,786	11,348
Dundee City	11,420	11,313	10,990	10,707	10,335	4,902	5,195	10,097
East Ayrshire	10,832	10,583	10,340	10,093	9,869	4,615	4,960	9,575
East Dunbartonshire	10,396	10,216	10,012	9,720	9,469	4,348	4,752	9,100
East Lothian	8,078	8,176	8,050	7,878	7,764	3,836	3,828	7,664
East Renfrewshire	8,755	8,748	8,755	8,732	8,676	4,141	4,448	8,589
Edinburgh City	29,078	28,563	27,856	26,956	26,183	12,458	13,185	25,643
Eilean Siar	2,288	2,218	2,172	2,158	2,097	1,067	1,061	2,128
Falkirk	12,454	12,465	12,250	12,195	12,019	5,821	6,143	11,964
Fife	29,765	29,406	28,969	28,597	28,267	13,590	14,089	27,679
Glasgow City	45,040	44,078	43,110	41,789	40,544	19,548	19,908	39,456
Highland	18,762	18,434	18,190	18,082	17,758	8,475	9,060	17,535
Inverclyde	7,378	7,150	6,918	6,696	6,492	3,106	3,209	6,315
Midlothian	7,257	7,226	6,985	6,897	6,696	3,310	3,289	6,599
Moray	7,810	7,847	7,826	7,778	7,653	3,631	3,885	7,516
North Ayrshire	12,212	12,116	11,972	11,727	11,409	5,456	5,590	11,046
North Lanarkshire	29,015	28,866	28,647	28,296	27,989	13,624	14,014	27,638
Orkney Islands	1,775	1,745	1,689	1,670	1,684	776	854	1,630
Perth & Kinross	10,698	10,719	10,665	10,521	10,257	5,091	5,221	10,312
Renfrewshire	15,093	14,945	14,606	14,305	13,925	6,743	6,865	13,608
Scottish Borders	9,030	8,948	8,915	8,768	8,672	4,190	4,397	8,587
Shetland Islands	2,120	2,097	2,069	2,010	1,987	960	984	1,944
South Ayrshire	9,102	8,969	8,763	8,681	8,407	4,043	4,153	8,196
South Lanarkshire	26,337	26,141	25,823	25,269	25,043	11,965	12,376	24,341
Stirling	6,989	7,042	7,020	7,037	6,968	3,458	3,464	6,922
West Dunbartonshire	8,381	8,320	8,103	7,819	7,550	3,565	3,734	7,299
West Lothian	14,984	15,160	15,057	14,898	14,789	7,183	7,500	14,683
All local authorities	424,761	420,059	413,251	405,553	397,640	190,870	198,930	389,800
Grant aided	460	462	462	462	460	229	231	460

National figures on page 16.

LOCAL AUTHORITY: PRIMARY

Table 6.3: Primary schools and pupils by school denomination, 2005

	Schools			Pupil roll		
	Non-denominational	Roman Catholic	Other denomination	Non-denominational	Roman Catholic	Other denomination
Aberdeen City	53	3	-	12,241	574	-
Aberdeenshire	152	-	-	19,736	-	-
Angus	55	2	-	8,906	158	-
Argyll & Bute	79	6	-	6,083	658	-
Clackmannanshire	17	2	-	3,856	174	-
Dumfries & Galloway	101	6	-	10,877	471	-
Dundee City	28	12	-	7,685	2,412	-
East Ayrshire	40	7	-	8,652	923	-
East Dunbartonshire	29	8	-	6,925	2,175	-
East Lothian	31	4	-	6,983	681	-
East Renfrewshire	17	6	1	6,118	2,314	157
Edinburgh City	79	15	-	22,421	3,222	-
Eilean Siar	38	-	-	2,128	-	-
Falkirk	42	6	-	10,355	1,609	-
Fife	129	14	-	25,078	2,601	-
Glasgow City	111	69	-	23,635	15,821	-
Highland	180	3	1	16,996	478	61
Inverclyde	15	11	-	3,707	2,608	-
Midlothian	28	7	-	5,740	859	-
Moray	43	3	-	7,241	275	-
North Ayrshire	43	10	-	9,219	1,827	-
North Lanarkshire	81	49	-	16,911	10,727	-
Orkney Islands	21	-	-	1,630	-	-
Perth & Kinross	71	4	1	9,455	760	97
Renfrewshire	36	16	-	10,074	3,534	-
Scottish Borders	61	4	-	8,348	239	-
Shetland Islands	32	-	-	1,944	-	-
South Ayrshire	38	7	-	7,365	831	-
South Lanarkshire	95	30	-	17,814	6,527	-
Stirling	38	3	1	6,336	504	82
West Dunbartonshire	21	13	-	4,372	2,927	-
West Lothian	49	16	-	11,782	2,901	-
All local authorities	1,853	336	4	320,613	68,790	397
Grant aided	1	-	-	460	-	-

National figures on page 16.

## LOCAL AUTHORITY: PRIMARY

Table 6.4: Primary pupils by stage, 2005

	P1	P2	P3	P4	P5	P6	P7
Aberdeen City	1,724	1,780	1,851	1,811	1,820	1,819	2,010
Aberdeenshire	2,647	2,804	2,735	2,867	2,838	2,886	2,959
Angus	1,179	1,227	1,274	1,371	1,271	1,355	1,387
Argyll & Bute	838	876	942	1,007	973	1,046	1,059
Clackmannanshire	542	565	546	598	580	601	598
Dumfries & Galloway	1,431	1,496	1,582	1,594	1,669	1,770	1,806
Dundee City	1,302	1,373	1,440	1,475	1,536	1,533	1,438
East Ayrshire	1,276	1,313	1,360	1,410	1,347	1,448	1,421
East Dunbartonshire	1,135	1,212	1,307	1,339	1,310	1,424	1,373
East Lothian	1,029	1,080	1,062	1,073	1,162	1,124	1,134
East Renfrewshire	1,152	1,166	1,214	1,280	1,240	1,230	1,307
Edinburgh City	3,579	3,574	3,671	3,683	3,684	3,722	3,730
Eilean Siar	280	269	296	276	323	353	331
Falkirk	1,649	1,619	1,758	1,719	1,730	1,644	1,845
Fife	3,698	3,727	3,936	3,976	4,061	4,075	4,206
Glasgow City	5,401	5,385	5,569	5,734	5,773	5,789	5,805
Highland	2,330	2,286	2,617	2,507	2,453	2,672	2,670
Inverclyde	833	859	843	919	912	974	975
Midlothian	915	909	969	900	936	977	993
Moray	990	1,004	1,072	1,136	1,058	1,115	1,141
North Ayrshire	1,441	1,484	1,544	1,580	1,633	1,672	1,692
North Lanarkshire	3,777	3,771	3,988	4,039	4,090	3,958	4,015
Orkney Islands	166	215	216	226	245	279	283
Perth & Kinross	1,421	1,416	1,436	1,537	1,520	1,485	1,497
Renfrewshire	1,845	1,881	1,894	1,974	2,014	2,003	1,997
Scottish Borders	1,156	1,171	1,147	1,242	1,227	1,325	1,319
Shetland Islands	270	268	261	288	270	286	301
South Ayrshire	1,053	1,076	1,238	1,152	1,252	1,181	1,244
South Lanarkshire	3,214	3,471	3,433	3,566	3,527	3,542	3,588
Stirling	953	935	1,036	985	988	1,051	974
West Dunbartonshire	951	976	1,026	1,068	1,084	1,067	1,127
West Lothian	2,049	2,027	2,078	2,076	2,171	2,172	2,110
All local authorities	52,226	53,215	55,341	56,408	56,697	57,578	58,335
Grant aided	66	65	66	66	66	65	66

National figures on page 16.

## LOCAL AUTHORITY: PRIMARY

Table 6.5: Average primary class sizes by type of class, 2005

	Number of schools	All classes		Single stage classes		Composite classes	
		Number	Average size	Number	Average size	Number	Average size
Aberdeen City	56	535	24.0	435	24.5	100	21.9
Aberdeenshire	152	872	22.7	469	25.2	403	19.7
Angus	57	374	24.2	238	26.2	136	20.9
Argyll & Bute	85	349	19.3	162	22.2	187	16.8
Clackmannanshire	19	162	24.9	124	26.1	38	20.9
Dumfries & Galloway	107	506	22.4	248	25.1	258	19.8
Dundee City	40	390	25.9	325	26.4	65	23.2
East Ayrshire	47	389	24.6	288	25.8	101	21.4
East Dunbartonshire	37	363	25.1	273	25.9	90	22.4
East Lothian	35	312	24.6	255	25.5	57	20.5
East Renfrewshire	24	329	26.1	313	26.3	16	22.3
Edinburgh City	94	1,034	24.8	910	25.4	124	20.8
Eilean Siar	38	156	13.7	32	13.6	124	13.7
Falkirk	48	470	25.5	389	26.2	81	21.8
Fife	143	1,169	23.7	845	25.0	324	20.5
Glasgow City	180	1,651	23.9	1,286	24.5	365	21.9
Highland	184	839	20.9	368	24.8	471	17.9
Inverclyde	26	259	24.4	224	24.8	35	21.8
Midlothian	35	279	23.7	214	24.8	65	20.0
Moray	46	312	24.1	199	25.8	113	21.1
North Ayrshire	53	439	25.2	345	26.0	94	22.1
North Lanarkshire	130	1,161	23.8	873	24.5	288	21.6
Orkney Islands	21	90	18.1	52	21.8	38	13.1
Perth & Kinross	76	455	22.7	302	24.8	153	18.5
Renfrewshire	52	551	24.7	476	25.4	75	20.1
Scottish Borders	65	383	22.5	223	24.3	160	19.8
Shetland Islands	32	113	17.0	55	19.1	58	15.0
South Ayrshire	45	343	23.9	261	25.7	82	18.2
South Lanarkshire	125	1,026	23.8	717	25.3	309	20.0
Stirling	42	292	23.7	193	25.6	99	20.1
West Dunbartonshire	34	306	23.9	231	24.6	75	21.5
West Lothian	65	591	24.9	438	26.2	153	20.9
All local authorities	2,193	16,500	23.7	11,763	25.2	4,737	19.9
Grant aided	1	17	27.2	17	27.2	-	-

National figures on page 21.

## LOCAL AUTHORITY: PRIMARY

Table 6.6: Average primary class size by class stage, 2005

	P1	P2	P3	P4	P5	P6	P7	Composite	Average class size
Aberdeen City	22.5	23.5	24.0	25.3	26.9	24.5	25.2	21.9	24.0
Aberdeenshire	23.1	24.0	25.7	26.2	27.3	25.5	25.5	19.7	22.7
Angus	23.9	26.3	26.4	27.4	26.3	27.8	25.5	20.9	24.2
Argyll & Bute	19.0	21.4	20.7	23.2	24.1	24.7	23.7	16.8	19.3
Clackmannanshire	23.4	26.8	24.3	27.6	25.3	28.8	27.4	20.9	24.9
Dumfries & Galloway	23.5	24.3	25.9	25.4	25.4	26.7	24.8	19.8	22.4
Dundee City	24.1	26.0	25.8	27.6	28.2	27.4	25.9	23.2	25.9
East Ayrshire	22.4	24.0	25.8	27.7	26.5	27.4	27.1	21.4	24.6
East Dunbartonshire	23.8	25.6	26.9	27.0	26.5	27.6	24.8	22.4	25.1
East Lothian	24.3	24.4	25.1	26.1	26.0	25.9	26.4	20.5	24.6
East Renfrewshire	25.6	24.6	25.8	27.3	26.8	27.3	26.8	22.3	26.1
Edinburgh City	23.5	24.8	26.1	26.1	26.5	26.2	24.8	20.8	24.8
Eilean Siar	11.3	15.3	11.6	14.8	14.6	14.5	14.4	13.7	13.7
Falkirk	22.8	25.3	27.6	27.7	27.7	26.5	26.7	21.8	25.5
Fife	21.9	23.8	25.5	26.0	25.8	26.7	25.7	20.5	23.7
Glasgow City	22.5	23.1	24.1	25.4	25.9	25.5	25.3	21.9	23.9
Highland	23.5	24.1	24.8	24.9	25.5	26.1	24.9	17.9	20.9
Inverclyde	22.9	23.8	24.7	25.3	25.9	25.6	25.5	21.8	24.4
Midlothian	24.0	24.1	25.0	25.4	26.1	24.5	24.6	20.0	23.7
Moray	23.9	24.9	25.7	27.2	26.8	26.2	26.2	21.1	24.1
North Ayrshire	24.9	25.4	26.0	26.4	26.9	26.9	25.8	22.1	25.2
North Lanarkshire	22.5	23.5	24.6	25.2	25.6	25.5	25.2	21.6	23.8
Orkney Islands	16.0	21.7	21.9	22.4	21.3	24.6	24.2	13.1	18.1
Perth & Kinross	24.2	24.1	25.1	24.3	25.2	26.5	24.2	18.5	22.7
Renfrewshire	23.3	25.0	25.2	26.1	26.5	26.4	25.8	20.1	24.7
Scottish Borders	23.0	24.2	23.3	25.3	25.5	25.1	23.9	19.8	22.5
Shetland Islands	19.3	20.1	16.7	19.7	19.4	20.0	18.6	15.0	17.0
South Ayrshire	24.0	23.9	25.4	26.2	26.6	27.0	27.0	18.2	23.9
South Lanarkshire	23.7	24.8	24.7	26.3	26.9	25.8	25.6	20.0	23.8
Stirling	23.9	24.5	24.5	26.8	25.7	26.8	27.0	20.1	23.7
West Dunbartonshire	21.3	24.2	25.6	25.5	26.3	25.3	24.9	21.5	23.9
West Lothian	24.2	24.9	25.4	26.7	28.5	27.7	26.4	20.9	24.9
Grant aided	22.0	22.0	22.0	33.0	33.0	33.0	33.0	-	27.2

National figures on page 21.

## LOCAL AUTHORITY: PRIMARY

Table 6.7: Class sizes by class stage, 2005

	P1 to P3			P4 to P7			
	20 or fewer	21 to 25	More than 25	20 or fewer	21 to 25	26 to 30	More than 30
Aberdeen City	44	87	59	31	71	114	29
Aberdeenshire	29	85	92	25	74	128	36
Angus	11	31	51	13	35	66	31
Argyll & Bute	29	28	17	16	24	37	11
Clackmannanshire	12	12	32	6	17	26	19
Dumfries & Galloway	14	41	42	19	47	68	17
Dundee City	15	57	65	12	41	94	41
East Ayrshire	29	46	52	13	40	67	41
East Dunbartonshire	11	33	63	20	36	81	29
East Lothian	10	50	49	13	40	67	26
East Renfrewshire	19	44	70	19	38	82	41
Edinburgh City	73	128	200	67	157	214	71
Eilean Siar	11	3	-	12	2	3	1
Falkirk	23	51	97	19	53	89	57
Fife	85	139	141	56	144	203	77
Glasgow City	140	234	202	106	206	278	120
Highland	32	56	65	31	70	91	23
Inverclyde	16	48	32	16	39	52	21
Midlothian	16	34	44	15	49	46	10
Moray	11	35	38	8	38	49	20
North Ayrshire	21	45	77	19	55	102	26
North Lanarkshire	88	138	155	78	133	217	64
Orkney Islands	13	6	2	8	16	7	-
Perth & Kinross	33	35	60	38	43	62	31
Renfrewshire	41	68	96	26	73	117	55
Scottish Borders	20	35	35	22	43	55	13
Shetland Islands	16	6	1	20	10	2	-
South Ayrshire	17	47	54	14	38	58	33
South Lanarkshire	57	98	159	49	96	168	90
Stirling	16	27	42	6	31	54	17
West Dunbartonshire	24	35	40	19	43	54	16
West Lothian	31	59	98	20	50	123	57
All local authorities	1,007	1,841	2,230	836	1,852	2,874	1,123
Grant aided	-	9	-	-	-	-	8

National figures on pages 22-24.

LOCAL AUTHORITY: PRIMARY

Table 6.8: Main difficulty of learning for primary pupils with a Record of Needs and/or an Individualised Educational Programme, 2005

	Total	Significant hearing impairment	Significant visual impairment	Significant physical or motor impairment	Significant language and speech disorder	Autistic spectrum disorder	Social emotional and behavioural difficulties	Moderate learning difficulties	Severe learning difficulties
Aberdeen City	425	*	11	14	34	65	24	195	*
Aberdeenshire	1,151	13	8	40	84	114	168	245	14
Angus	370	9	5	11	24	34	40	90	14
Argyll & Bute	224	*	*	8	*	26	21	36	*
Clackmannanshire	134	*	*	7	14	12	22	20	*
Dumfries & Galloway	716	7	6	14	45	67	59	212	32
Dundee City	699	15	6	20	38	90	151	153	7
East Ayrshire	569	*	5	20	25	24	46	148	*
East Dunbartonshire	174	*	*	12	16	15	14	20	5
East Lothian	164	*	*	*	24	25	*	24	6
East Renfrewshire	246	6	*	11	15	44	17	23	*
Edinburgh, City of	949	19	9	53	125	100	201	142	15
Eilean Siar	190	-	*	*	9	17	15	70	11
Falkirk	723	7	*	16	99	28	63	172	7
Fife	926	27	6	27	64	155	116	165	53
Glasgow City	609	8	*	46	55	57	55	65	19
Highland	785	13	7	33	50	151	103	162	23
Inverclyde	310	*	7	11	13	27	18	41	*
Midlothian	257	*	*	16	39	31	57	34	6
Moray	314	5	5	10	22	51	20	81	10
North Ayrshire	281	6	5	7	12	40	23	38	9
North Lanarkshire	579	23	12	22	80	109	34	75	8
Orkney Islands	91	-	-	*	*	30	*	7	*
Perth & Kinross	750	6	*	10	34	68	87	213	15
Renfrewshire	497	5	6	15	16	56	43	92	7
Scottish Borders	327	*	*	13	35	38	39	83	15
Shetland Islands	191	-	*	5	8	33	20	39	6
South Ayrshire	644	*	7	17	40	23	124	149	10
South Lanarkshire	1,118	12	8	19	65	91	60	183	28
Stirling	221	*	*	12	22	33	45	34	*
West	197	8	5	10	22	17	27	34	6
West Lothian	688	6	-	27	60	65	145	149	18
All local authorities	15,519	228	159	534	1,199	1,736	1,874	3,194	369
Grant aided <sup>(1)</sup>	*	-	-	-	-	-	-	-	-

(1) Where totals are published elsewhere, figures marked \* for grant aided have been assumed to be 2 in the "not known" category.

National figures on page 19.



LOCAL AUTHORITY: PRIMARY

Table 6.8 (cont.): Main difficulty of learning for primary pupils with a Record of Needs and/or an Individualised Educational Programme, 2005

Profound learning difficulties	Specific learning difficulties in language and/or mathematics (including dyslexia)	Complex or multiple impairments – Dual sensory impairment	Complex or multiple impairments – moderate learning difficulties	Complex or multiple impairments – severe learning difficulties	Complex or multiple impairments – profound learning difficulties	Other	Not known / Not disclosed	
-	43	*	18	5	-	9	-	Aberdeen City
*	277	*	101	23	*	41	12	Aberdeenshire
*	63	*	28	7	*	38	-	Angus
*	50	-	20	*	*	43	-	Argyll & Bute
*	28	-	6	*	-	13	-	Clackmannanshire
*	218	*	19	16	15	-	-	Dumfries & Galloway
-	108	-	21	*	*	83	-	Dundee City
-	244	-	10	*	-	18	21	East Ayrshire
*	43	-	5	-	-	38	-	East Dunbartonshire
-	21	-	9	10	13	13	-	East Lothian
*	52	-	7	*	*	60	-	East Renfrewshire
*	171	*	37	11	*	59	-	Edinburgh, City of
*	45	-	*	*	*	10	-	Eilean Siar
*	265	5	19	*	*	31	-	Falkirk
*	190	*	37	39	6	33	1	Fife
13	96	-	20	*	*	164	-	Glasgow City
*	145	*	21	20	*	47	-	Highland
-	112	-	22	-	-	53	-	Inverclyde
*	54	-	7	*	*	*	-	Midlothian
5	65	-	11	8	7	14	-	Moray
*	76	*	10	*	*	47	-	North Ayrshire
*	92	-	20	*	*	99	-	North Lanarkshire
*	28	-	*	*	*	*	-	Orkney Islands
-	209	5	38	7	*	51	-	Perth & Kinross
*	147	-	12	*	-	93	-	Renfrewshire
*	48	*	9	13	5	19	-	Scottish Borders
*	53	-	*	6	*	12	-	Shetland Islands
-	182	*	18	*	*	66	-	South Ayrshire
*	295	-	50	*	-	298	-	South Lanarkshire
*	42	*	7	*	*	10	-	Stirling
-	24	*	6	*	*	26	6	West Dunbartonshire
*	147	*	27	19	*	20	-	West Lothian
58	3,633	35	622	227	97	1,514	40	All local authorities
-	-	-	-	-	-	-	*	Grant aided

## LOCAL AUTHORITY: PRIMARY

Table 6.9: Primary pupils with a Record of Needs and/or an Individualised Educational Programme, 2005

	All pupils with RoN and/or IEP	With RoN only	With IEP only	With both RoN and IEP	Percentage of pupils with RoN and/or IEP
Aberdeen City	425	5	237	183	3.3
Aberdeenshire	1,151	5	970	176	5.8
Angus	370	*	258	*	4.1
Argyll & Bute	224	6	161	57	3.3
Clackmannanshire	134	6	97	31	3.3
Dumfries & Galloway	716	19	456	241	6.3
Dundee City	699	-	586	113	6.9
East Ayrshire	569	6	529	34	5.9
East Dunbartonshire	174	13	139	22	1.9
East Lothian	164	*	119	*	2.1
East Renfrewshire	246	17	178	51	2.9
Edinburgh City	949	11	738	200	3.7
Eilean Siar	190	5	154	31	8.9
Falkirk	723	*	630	*	6.0
Fife	926	19	754	153	3.3
Glasgow City	609	96	402	111	1.5
Highland	785	11	569	205	4.5
Inverclyde	310	13	220	77	4.9
Midlothian	257	8	233	16	3.9
Moray	314	7	158	149	4.2
North Ayrshire	281	10	242	29	2.5
North Lanarkshire	579	41	371	167	2.1
Orkney Islands	91	-	83	8	5.6
Perth & Kinross	750	22	597	131	7.3
Renfrewshire	497	38	353	106	3.7
Scottish Borders	327	13	214	100	3.8
Shetland Islands	191	*	168	*	9.8
South Ayrshire	644	6	566	72	7.9
South Lanarkshire	1,118	32	808	278	4.6
Stirling	221	*	164	*	3.2
West Dunbartonshire	197	6	166	25	2.7
West Lothian	688	6	592	90	4.7
All local authorities	15,519	431	11,912	3,176	4.0
Grant aided <sup>(1)</sup>	*	*	-	-	*

(1) Where totals are published elsewhere, the figure for grant aided schools has been assumed to be 2 in RoN only .  
National figures on page 18.

## LOCAL AUTHORITY: PRIMARY

Table 6.10: Looked after children in primary schools by local authority of school, 2005

	Children looked after:		
	All pupils	At home	Away from home
Aberdeen City	12,815	68	39
Aberdeenshire	19,736	39	76
Angus	9,064	25	38
Argyll & Bute	6,741	16	43
Clackmannanshire	4,030	14	24
Dumfries & Galloway	11,348	72	63
Dundee City	10,097	70	77
East Ayrshire	9,575	43	74
East Dunbartonshire	9,100	8	14
East Lothian	7,664	13	33
East Renfrewshire	8,589	16	7
Edinburgh City	25,643	212	159
Eilean Siar	2,128	12	7
Falkirk	11,964	22	44
Fife	27,679	14	127
Glasgow City	39,456	507	125
Highland	17,535	68	37
Inverclyde	6,315	12	22
Midlothian	6,599	26	36
Moray	7,516	21	30
North Ayrshire	11,046	93	80
North Lanarkshire	27,638	206	89
Orkney Islands	1,630	*	*
Perth & Kinross	10,312	11	30
Renfrewshire	13,608	39	43
Scottish Borders	8,587	24	43
Shetland Islands	1,944	*	*
South Ayrshire	8,196	54	41
South Lanarkshire	24,341	144	76
Stirling	6,922	23	18
West Dunbartonshire	7,299	40	34
West Lothian	14,683	41	76
All Local Authorities	389,800	1,965	1,611
Grant Aided	460	-	-

## LOCAL AUTHORITY: PRIMARY

Table 6.11: Primary pupils by ethnicity, 2005

	Total pupils	Of which		Percentage	
		Minority ethnic <sup>(1)</sup>	Not known	Minority ethnic <sup>(1)</sup>	Not known
Aberdeen City	12,815	778	489	6	4
Aberdeenshire	19,736	284	184	1	1
Angus	9,064	112	1,159	1	13
Argyll & Bute	6,741	98	288	1	4
Clackmannanshire	4,030	85	17	2	-
Dumfries & Galloway	11,348	193	279	2	2
Dundee City	10,097	564	389	6	4
East Ayrshire	9,575	124	295	1	3
East Dunbartonshire	9,100	491	127	5	1
East Lothian	7,664	131	254	2	3
East Renfrewshire	8,589	848	189	10	2
Edinburgh City	25,643	2,394	369	9	1
Eilean Siar	2,128	24	25	1	1
Falkirk	11,964	276	144	2	1
Fife	27,679	645	340	2	1
Glasgow City	39,456	4,954	1,386	13	4
Highland	17,535	301	221	2	1
Inverclyde	6,315	103	160	2	3
Midlothian	6,599	127	167	2	3
Moray	7,516	117	21	2	-
North Ayrshire	11,046	142	338	1	3
North Lanarkshire	27,638	712	975	3	4
Orkney Islands	1,630	17	64	1	4
Perth & Kinross	10,312	159	2,448	2	24
Renfrewshire	13,608	310	320	2	2
Scottish Borders	8,587	111	206	1	2
Shetland Islands	1,944	24	40	1	2
South Ayrshire	8,196	153	299	2	4
South Lanarkshire	24,341	658	631	3	3
Stirling	6,922	199	14	3	-
West Dunbartonshire	7,299	89	183	1	3
West Lothian	14,683	376	720	3	5
All local authorities	389,800	15,599	12,741	4	3
Grant aided	460	35	5	8	1

(1) Percentage of those with known ethnic background. Minority ethnic group includes all categories other than White-UK and White-Other.

National figures on page 20.

## LOCAL AUTHORITY: PRIMARY

Table 6.12: Primary pupils who attend schools outwith their local authority of residence, 2003-2005<sup>(1)</sup>

Local authority of residence	Total pupils 2005	Go to a school outwith area 2003		Go to a school outwith area 2004		Go to a school outwith area 2005	
		Number	%	Number	%	Number	%
Aberdeen City	12,594	74	0.6	63	0.5	63	0.5
Aberdeenshire	19,772	269	1.3	245	1.2	274	1.4
Angus	8,970	147	1.6	147	1.6	142	1.6
Argyll & Bute	6,645	19	0.3	28	0.4	20	0.3
Clackmannanshire	4,013	53	1.3	61	1.5	62	1.5
Dumfries & Galloway	11,281	6	0.1	7	0.1	16	0.1
Dundee City	10,124	231	2.2	213	2.1	218	2.2
East Ayrshire	9,569	165	1.6	187	1.9	181	1.9
East Dunbartonshire	8,200	112	1.3	125	1.5	109	1.3
East Lothian	7,681	88	1.1	99	1.3	108	1.4
East Renfrewshire	7,594	133	1.7	123	1.6	137	1.8
Edinburgh City	25,159	90	0.3	99	0.4	91	0.4
Eilean Siar	2,111	-	-	-	-	-	-
Falkirk	11,969	113	0.9	136	1.1	157	1.3
Fife	27,546	70	0.2	78	0.3	80	0.3
Glasgow City	40,160	2,231	5.3	2,282	5.6	2,732	6.8
Highland	17,430	18	0.1	17	0.1	13	0.1
Inverclyde	6,228	37	0.6	46	0.7	39	0.6
Midlothian	6,630	112	1.6	139	2.1	147	2.2
Moray	7,337	30	0.4	29	0.4	29	0.4
North Ayrshire	11,100	146	1.2	136	1.2	144	1.3
North Lanarkshire	27,799	808	2.8	823	2.9	814	2.9
Orkney Islands	1,625	-	-	-	-	-	-
Perth & Kinross	10,205	127	1.2	127	1.3	139	1.4
Renfrewshire	13,392	155	1.1	177	1.3	147	1.1
Scottish Borders	8,469	37	0.4	33	0.4	33	0.4
Shetland Islands	1,932	-	-	-	-	-	-
South Ayrshire	8,072	87	1.0	95	1.1	93	1.2
South Lanarkshire	24,063	656	2.6	649	2.6	657	2.7
Stirling	6,804	53	0.8	47	0.7	52	0.8
West Dunbartonshire	7,263	189	2.4	194	2.6	191	2.6
West Lothian	14,605	140	0.9	149	1.0	151	1.0
<b>All local authorities</b>	<b>386,342</b>	<b>6,396</b>	<b>1.6</b>	<b>6,554</b>	<b>1.7</b>	<b>7,039</b>	<b>1.8</b>

(1) Figures do not include pupils in grant aided schools. Local authority of residence not identified for a further 3,918 pupils.

## LOCAL AUTHORITY: PRIMARY

Table 6.13: Primary pupils who attend schools but who live outwith the local authority, 2003-2005<sup>(1)</sup>

Local authority of school	Total pupils 2005	Come from outwith area 2003		Come from outwith area 2004		Come from outwith area 2005	
		Number	%	Number	%	Number	%
Aberdeen City	12,747	212	1.6	194	1.5	216	1.7
Aberdeenshire	19,600	106	0.5	100	0.5	102	0.5
Angus	9,041	213	2.3	197	2.2	213	2.4
Argyll & Bute	6,664	35	0.5	35	0.5	39	0.6
Clackmannanshire	4,006	49	1.2	47	1.2	55	1.4
Dumfries & Galloway	11,273	7	0.1	5	-	8	0.1
Dundee City	10,042	155	1.5	143	1.4	136	1.4
East Ayrshire	9,519	130	1.3	133	1.4	131	1.4
East Dunbartonshire	9,046	1,040	10.8	1,013	10.8	955	10.6
East Lothian	7,612	44	0.6	48	0.6	39	0.5
East Renfrewshire	8,502	949	11.0	985	11.5	1,045	12.3
Edinburgh City	25,408	298	1.1	325	1.3	340	1.3
Eilean Siar	2,111	-	-	-	-	-	-
Falkirk	11,847	28	0.2	32	0.3	35	0.3
Fife	27,492	19	0.1	29	0.1	26	0.1
Glasgow City	38,496	1,017	2.5	1,040	2.6	1,068	2.8
Highland	17,422	8	-	5	-	5	-
Inverclyde	6,227	39	0.6	43	0.7	38	0.6
Midlothian	6,567	76	1.1	81	1.2	84	1.3
Moray	7,341	37	0.5	33	0.4	33	0.4
North Ayrshire	10,997	43	0.4	57	0.5	41	0.4
North Lanarkshire	27,372	357	1.3	409	1.5	387	1.4
Orkney Islands	1,625	-	-	-	-	-	-
Perth & Kinross	10,230	150	1.5	152	1.5	164	1.6
Renfrewshire	13,455	208	1.5	197	1.4	210	1.6
Scottish Borders	8,474	28	0.3	38	0.4	38	0.4
Shetland Islands	1,932	-	-	-	-	-	-
South Ayrshire	8,146	168	1.9	166	2.0	167	2.1
South Lanarkshire	24,084	669	2.7	701	2.8	678	2.8
Stirling	6,865	108	1.6	124	1.8	113	1.6
West Dunbartonshire	7,204	131	1.7	136	1.8	132	1.8
West Lothian	14,539	72	0.5	86	0.6	85	0.6
<b>All local authorities</b>	<b>385,886</b>	<b>6,396</b>	<b>1.6</b>	<b>6,554</b>	<b>1.7</b>	<b>6,583</b>	<b>1.7</b>

(1) Figures do not include pupils in grant aided schools. Local authority of residence not identified for a further 3,918 pupils.

## LOCAL AUTHORITY: PRIMARY

Table 6.14: Pupils receiving Gaelic medium education, 2005.

	Exclusively through Gaelic	All curriculum through Gaelic or bilingual	Some curriculum through English, some through Gaelic	Gaelic the only subject taught through Gaelic	Gaelic taught as a learner	No Gaelic taught
Aberdeen City	9	36	-	-	-	12,770
Aberdeenshire	-	-	-	-	-	19,736
Angus	*	-	*	*	-	9,048
Argyll & Bute	54	102	-	-	14	6,571
Clackmannanshire	-	-	-	-	-	4,030
Dumfries & Galloway	-	-	-	-	-	11,348
Dundee City	-	-	-	-	-	10,097
East Ayrshire	10	-	20	-	-	9,545
East Dunbartonshire	46	-	-	-	-	9,054
East Lothian	-	-	-	-	-	7,664
East Renfrewshire	-	-	-	-	-	8,589
Edinburgh City	39	51	-	-	69	25,484
Eilean Siar	129	326	25	103	1,536	10
Falkirk	-	-	-	-	-	11,964
Fife	-	-	-	-	-	27,679
Glasgow City	-	194	-	-	-	39,262
Highland	233	343	128	24	604	16,203
Inverclyde	7	-	17	-	-	6,291
Midlothian	-	-	-	-	-	6,599
Moray	-	-	-	-	-	7,516
North Ayrshire	-	-	-	31	-	11,015
North Lanarkshire	-	105	-	-	-	27,533
Orkney Islands	-	-	-	-	-	1,630
Perth & Kinross	*	-	*	*	187	10,118
Renfrewshire	-	-	-	-	-	13,608
Scottish Borders	-	-	-	-	-	8,587
Shetland Islands	-	-	-	-	-	1,944
South Ayrshire	-	-	-	-	-	8,196
South Lanarkshire	23	-	61	-	-	24,257
Stirling	69	-	-	-	514	6,339
West Dunbartonshire	-	-	-	-	-	7,299
West Lothian	-	-	-	-	-	14,683
All local authorities	628	1,157	263	160	2,924	384,669
Grant aided	-	-	-	-	-	460

**Local Authority: Secondary**

Table 7.1: Publicly funded secondary schools, 1997-2005

	1997	1998	1999	2000	2001	2002	2003	2004	2005
Aberdeen City	13	13	13	13	13	12	12	12	12
Aberdeenshire	16	16	16	16	16	17	17	17	17
Angus	9	8	8	8	8	8	8	8	8
Argyll & Bute	10	10	10	10	10	10	10	10	10
Clackmannanshire	3	3	3	3	3	3	3	3	3
Dumfries & Galloway	16	16	16	16	16	16	16	16	16
Dundee City	10	10	10	10	10	10	10	10	10
East Ayrshire	10	10	9	9	9	9	9	9	9
East Dunbartonshire	9	9	9	9	9	9	9	9	9
East Lothian	6	6	6	6	6	6	6	6	6
East Renfrewshire	7	7	7	7	7	7	7	7	7
Edinburgh City	23	23	23	23	23	23	23	23	23
Eilean Siar	13	13	13	13	12	11	11	11	11
Falkirk	8	8	8	8	8	8	8	8	8
Fife	19	19	19	19	19	19	19	19	19
Glasgow City	38	31	29	29	29	29	29	29	29
Highland	28	28	28	28	28	29	29	29	30
Inverclyde	8	8	8	8	8	8	8	8	8
Midlothian	6	6	6	6	6	6	6	6	6
Moray	9	8	8	8	8	8	8	8	8
North Ayrshire	10	10	10	10	10	10	10	10	10
North Lanarkshire	26	26	26	26	26	26	26	26	26
Orkney Islands	6	6	6	6	6	6	6	6	6
Perth & Kinross	10	10	10	10	10	10	10	10	10
Renfrewshire	14	14	14	14	13	12	12	12	12
Scottish Borders	9	9	9	9	9	9	9	9	9
Shetland Islands	9	9	9	9	9	9	9	9	9
South Ayrshire	9	9	9	9	9	9	9	9	9
South Lanarkshire	21	21	21	21	21	21	21	21	19
Stirling	7	7	7	7	7	7	7	7	7
West Dunbartonshire	7	7	7	7	7	7	7	7	7
West Lothian	11	11	11	11	11	11	11	11	11
All local authorities	400	391	388	388	386	385	385	385	384
Grant aided	1	1	1	1	1	1	1	1	1

National figures on page 25.



## LOCAL AUTHORITY: SECONDARY

Table 7.2: Pupils in publicly funded secondary schools, 2000-2005

	2000	2001	2002	2003	2004	2005		
						Female	Male	Total
Aberdeen City	10,981	10,942	10,628	10,552	10,457	5,164	5,211	10,375
Aberdeenshire	15,328	15,308	15,522	15,670	15,881	7,951	7,885	15,836
Angus	7,208	7,113	6,967	7,104	7,082	3,490	3,544	7,034
Argyll & Bute	5,590	5,590	5,635	5,739	5,853	2,916	2,819	5,735
Clackmannanshire	3,068	3,036	2,966	2,991	3,074	1,553	1,489	3,042
Dumfries & Galloway	9,756	9,620	9,666	9,564	9,585	4,763	4,818	9,581
Dundee City	8,882	8,809	8,664	8,585	8,501	4,177	4,256	8,433
East Ayrshire	8,028	8,065	8,129	8,181	8,255	4,074	4,065	8,139
East Dunbartonshire	8,859	8,857	8,846	8,991	8,690	4,070	4,278	8,348
East Lothian	5,238	5,318	5,482	5,640	5,777	2,852	2,951	5,803
East Renfrewshire	7,284	7,344	7,512	7,591	7,625	3,817	3,888	7,705
Edinburgh City	19,814	20,016	20,116	20,220	20,140	9,902	10,076	19,978
Eilean Siar	1,928	1,948	1,981	1,952	1,921	929	953	1,882
Falkirk	8,508	8,498	8,654	8,933	9,147	4,576	4,543	9,119
Fife	23,197	23,032	22,949	22,701	22,424	11,000	11,213	22,213
Glasgow City	29,299	29,380	29,231	29,318	28,914	14,434	14,065	28,499
Highland	14,655	14,720	14,749	14,807	14,928	7,364	7,544	14,908
Inverclyde	5,774	5,682	5,679	5,640	5,571	2,704	2,740	5,444
Midlothian	5,574	5,589	5,659	5,647	5,550	2,747	2,755	5,502
Moray	5,730	5,715	5,834	5,949	6,022	2,977	3,013	5,990
North Ayrshire	9,183	9,092	9,231	9,276	9,205	4,526	4,677	9,203
North Lanarkshire	22,708	22,451	22,398	22,474	22,363	11,113	11,010	22,123
Orkney Islands	1,360	1,366	1,460	1,441	1,427	725	702	1,427
Perth & Kinross	7,732	7,589	7,714	7,831	7,919	3,913	4,110	8,023
Renfrewshire	11,969	11,779	11,890	11,791	11,657	5,725	5,781	11,506
Scottish Borders	6,691	6,807	6,864	6,928	6,991	3,510	3,461	6,971
Shetland Islands	1,641	1,624	1,671	1,669	1,668	851	822	1,673
South Ayrshire	7,748	7,614	7,499	7,495	7,384	3,719	3,631	7,350
South Lanarkshire	20,323	19,898	19,782	19,956	20,018	9,982	10,188	20,170
Stirling	5,742	5,751	5,807	5,918	6,043	3,002	3,020	6,022
West Dunbartonshire	6,883	6,609	6,582	6,467	6,397	3,113	3,142	6,255
West Lothian	10,436	10,617	10,564	10,818	10,842	5,500	5,467	10,967
All local authorities	317,117	315,779	316,331	317,839	317,311	157,139	158,117	315,256
Grant aided	587	580	572	588	589	286	298	584

National figures on page 25.

LOCAL AUTHORITY: SECONDARY

Table 7.3: Secondary schools and pupils by school denomination, 2005

	Schools			Pupil roll		
	Non-denominational	Roman Catholic	Other denomination	Non-denominational	Roman Catholic	Other denomination
Aberdeen City	12	-	-	10,375	-	-
Aberdeenshire	17	-	-	15,836	-	-
Angus	8	-	-	7,034	-	-
Argyll & Bute	10	-	-	5,735	-	-
Clackmannanshire	3	-	-	3,042	-	-
Dumfries & Galloway	15	1	-	8,872	709	-
Dundee City	7	3	-	6,143	2,290	-
East Ayrshire	8	1	-	7,354	785	-
East Dunbartonshire	7	2	-	6,805	1,543	-
East Lothian	6	-	-	5,803	-	-
East Renfrewshire	5	2	-	5,385	2,320	-
Edinburgh City	20	3	-	17,439	2,539	-
Eilean Siar	11	-	-	1,882	-	-
Falkirk	7	1	-	8,118	1,001	-
Fife	17	2	-	20,480	1,733	-
Glasgow City	18	11	-	17,442	11,057	-
Highland	30	-	-	14,908	-	-
Inverclyde	5	3	-	3,072	2,372	-
Midlothian	5	1	-	4,663	839	-
Moray	8	-	-	5,990	-	-
North Ayrshire	8	2	-	7,600	1,603	-
North Lanarkshire	16	10	-	12,348	9,775	-
Orkney Islands	6	-	-	1,427	-	-
Perth & Kinross	9	1	-	7,460	563	-
Renfrewshire	8	4	-	8,529	2,977	-
Scottish Borders	9	-	-	6,971	-	-
Shetland Islands	9	-	-	1,673	-	-
South Ayrshire	8	1	-	6,688	662	-
South Lanarkshire	15	4	-	15,111	5,059	-
Stirling	6	1	-	5,119	903	-
West Dunbartonshire	4	3	-	3,365	2,890	-
West Lothian	9	2	-	8,868	2,099	-
All local authorities	326	58	-	261,537	53,719	-
Grant aided	1	-	-	584	-	-

National figures on page 25.

## LOCAL AUTHORITY: SECONDARY

Table 7.4: Secondary pupils by stage, 2005

	S1	S2	S3	S4	S5	S6
Aberdeen City	1,908	2,021	2,083	2,017	1,424	922
Aberdeenshire	3,030	3,098	3,173	3,133	2,108	1,294
Angus	1,325	1,392	1,451	1,416	884	566
Argyll & Bute	1,057	1,051	1,127	1,057	924	519
Clackmannanshire	572	647	615	576	414	218
Dumfries & Galloway	1,881	1,836	1,864	1,923	1,272	805
Dundee City	1,553	1,687	1,699	1,686	1,126	682
East Ayrshire	1,512	1,568	1,626	1,621	1,165	647
East Dunbartonshire	1,398	1,412	1,655	1,593	1,373	917
East Lothian	1,097	1,141	1,136	1,149	802	478
East Renfrewshire	1,412	1,386	1,374	1,379	1,251	903
Edinburgh City	3,622	3,781	3,984	3,831	2,961	1,799
Eilean Siar	306	365	351	371	277	212
Falkirk	1,681	1,799	1,807	1,789	1,352	691
Fife	4,255	4,236	4,402	4,327	3,084	1,909
Glasgow City	5,462	5,658	5,949	5,465	4,129	1,836
Highland	2,734	2,850	2,927	2,843	2,195	1,359
Inverclyde	923	1,027	1,045	1,059	875	515
Midlothian	1,003	1,088	1,098	1,107	743	463
Moray	1,118	1,196	1,215	1,132	828	501
North Ayrshire	1,735	1,775	1,856	1,811	1,311	715
North Lanarkshire	4,113	4,284	4,450	4,243	3,264	1,769
Orkney Islands	252	268	268	311	215	113
Perth & Kinross	1,509	1,565	1,524	1,576	1,099	750
Renfrewshire	2,124	2,246	2,184	2,270	1,702	980
Scottish Borders	1,275	1,346	1,407	1,407	909	627
Shetland Islands	305	338	315	349	225	141
South Ayrshire	1,367	1,353	1,414	1,403	1,133	680
South Lanarkshire	3,878	3,810	4,031	3,848	2,894	1,709
Stirling	1,079	1,169	1,184	1,086	937	567
West Dunbartonshire	1,158	1,219	1,235	1,225	901	517
West Lothian	2,136	2,106	2,184	2,089	1,559	893
All local authorities	58,780	60,718	62,633	61,092	45,336	26,697
Grant aided	99	99	99	98	104	85

National figures on page 25.

LOCAL AUTHORITY: SECONDARY

Table 7.5: Main difficulty of learning for secondary pupils with a Record of Needs and/or an Individualised Educational Programme, 2005

	Total	Significant hearing impairment	Significant visual impairment	Significant physical or motor impairment	Significant language and speech disorder	Autistic spectrum disorder	Social emotional and behavioural difficulties	Moderate learning difficulties	Severe learning difficulties
Aberdeen City	222	9	*	5	7	31	26	102	-
Aberdeenshire	913	13	8	23	16	58	142	246	11
Angus	158	-	5	*	*	17	31	50	6
Argyll & Bute	263	5	*	17	7	19	15	41	8
Clackmannanshire	160	*	*	10	5	10	50	34	*
Dumfries & Galloway	402	*	*	18	9	24	33	140	35
Dundee City	962	17	*	18	12	27	477	159	12
East Ayrshire	309	9	*	22	6	16	16	41	6
East Dunbartonshire	124	7	*	6	10	13	12	10	*
East Lothian	97	*	*	*	*	13	21	*	10
East Renfrewshire	203	*	*	7	*	23	11	29	*
Edinburgh, City of	662	8	5	55	27	38	114	126	*
Eilean Siar	81	-	*	*	-	*	10	30	*
Falkirk	510	7	5	9	32	7	48	120	*
Fife	957	23	15	38	21	72	119	234	19
Glasgow City	464	24	14	22	31	51	19	59	*
Highland	600	15	11	26	14	95	76	112	12
Inverclyde	303	7	*	18	7	15	23	55	*
Midlothian	177	*	*	17	*	13	30	30	6
Moray	259	9	*	10	5	34	18	59	15
North Ayrshire	109	*	*	13	*	*	*	22	*
North Lanarkshire	475	24	11	28	17	44	15	99	13
Orkney Islands	63	*	-	*	-	8	*	*	*
Perth & Kinross	509	*	8	14	12	33	100	76	*
Renfrewshire	451	7	13	22	11	25	14	74	*
Scottish Borders	375	*	*	8	13	30	77	115	16
Shetland Islands	158	*	-	8	*	19	28	28	*
South Ayrshire	558	8	7	16	*	19	170	88	*
South Lanarkshire	714	20	15	25	24	25	34	133	7
Stirling	210	*	*	12	8	14	47	44	10
West Dunbartonshire	151	8	7	5	*	8	26	23	*
West Lothian	415	7	*	17	*	15	125	89	*
All local authorities	12,014	262	163	499	322	825	1,934	2,481	234
Grant aided <sup>(1)</sup>	5	-	-	-	-	-	-	-	-

(1) Main difficulty of learning has been published as "not known/not disclosed" for disclosure purposes. National figures on page 28.

LOCAL AUTHORITY: SECONDARY

Table 7.5 (cont.): Main difficulty of learning for secondary pupils with a Record of Needs and/or an Individualised Educational Programme, 2005

Profound learning difficulties	Specific learning difficulties in language and/or mathematics (including dyslexia)	Complex or multiple impairments - Dual sensory impairment	Complex or multiple impairments - moderate learning difficulties	Complex or multiple impairments - severe learning difficulties	Complex or multiple impairments - profound learning difficulties	Other	Not known / Not disclosed	
-	23	-	13	-	-	*	-	Aberdeen City
-	264	*	68	19	*	39	-	Aberdeenshire
-	12	-	12	8	-	10	-	Angus
*	91	-	10	*	-	42	-	Argyll & Bute
*	22	-	15	*	-	*	-	Clackmannanshire
*	113	-	10	*	8	*	-	Dumfries & Galloway
-	121	*	13	*	*	98	-	Dundee City
-	95	-	9	*	-	81	*	East Ayrshire
-	32	*	*	-	-	19	8	East Dunbartonshire
-	15	-	7	*	*	*	*	East Lothian
-	66	-	15	*	*	40	-	East Renfrewshire
*	216	*	26	*	-	32	-	Edinburgh, City of
-	19	-	7	*	*	*	-	Eilean Siar
*	265	-	*	-	-	10	-	Falkirk
*	308	*	45	15	*	41	*	Fife
-	129	-	12	*	-	95	-	Glasgow City
*	154	*	28	12	6	34	-	Highland
*	108	*	25	*	-	36	-	Inverclyde
-	58	*	11	-	-	*	-	Midlothian
*	71	-	5	6	*	18	-	Moray
-	12	-	-	-	-	45	-	North Ayrshire
-	153	-	14	-	-	57	-	North Lanarkshire
-	42	-	*	*	-	-	-	Orkney Islands
-	158	-	28	12	-	58	-	Perth & Kinross
*	165	*	*	-	-	114	-	Renfrewshire
*	77	*	5	14	-	9	-	Scottish Borders
-	48	-	*	-	*	14	-	Shetland Islands
-	198	*	5	*	*	37	-	South Ayrshire
-	289	-	*	*	-	136	-	South Lanarkshire
-	49	-	7	5	*	5	*	Stirling
-	42	-	*	-	-	24	-	West Dunbartonshire
-	125	*	9	-	-	17	-	West Lothian
25	3,540	16	418	120	38	1,124	13	All local authorities
-	-	-	-	-	-	-	5	Grant aided

## LOCAL AUTHORITY: SECONDARY

Table 7.6: Secondary pupils with a Record of Needs and/or an Individualised Educational Programme, 2005

	All pupils with RoN and/or IEP	With RoN only	With IEP only	With both RoN and IEP	Percentage of pupils with RoN and/or IEP
Aberdeen City	222	40	60	122	2.1
Aberdeenshire	913	13	665	235	5.8
Angus	158	9	36	113	2.2
Argyll & Bute	263	27	136	100	4.6
Clackmannanshire	160	5	115	40	5.3
Dumfries & Galloway	402	22	163	217	4.2
Dundee City	962	-	840	122	11.4
East Ayrshire	309	29	204	76	3.8
East Dunbartonshire	124	29	63	32	1.5
East Lothian	97	10	43	44	1.7
East Renfrewshire	203	51	107	45	2.6
Edinburgh City	662	8	474	180	3.3
Eilean Siar	81	*	30	*	4.3
Falkirk	510	17	427	66	5.6
Fife	957	56	673	228	4.3
Glasgow City	464	84	213	167	1.6
Highland	600	60	312	228	4.0
Inverclyde	303	28	110	165	5.6
Midlothian	177	7	143	27	3.2
Moray	259	14	75	170	4.3
North Ayrshire	109	38	43	28	1.2
North Lanarkshire	475	57	314	104	2.1
Orkney Islands	63	-	43	20	4.4
Perth & Kinross	509	25	319	165	6.3
Renfrewshire	451	86	161	204	3.9
Scottish Borders	375	20	230	125	5.4
Shetland Islands	158	*	116	*	9.4
South Ayrshire	558	19	417	122	7.6
South Lanarkshire	714	75	421	218	3.5
Stirling	210	9	138	63	3.5
West Dunbartonshire	151	19	114	18	2.4
West Lothian	415	10	342	63	3.8
All local authorities	12,014	874	7,547	3,593	3.8
Grant aided <sup>(1)</sup>	5	*	*	-	0.9

(1) Where totals are published elsewhere, the figure for with RoN only in grant aided schools has been assumed to be 2. National figures on page 27.

## LOCAL AUTHORITY: SECONDARY

Table 7.7: Looked after children in secondary schools by local authority of school, 2005

	All pupils	Children looked after:	
		At home	Away from home
Aberdeen City	10,375	44	39
Aberdeenshire	15,836	42	56
Angus	7,034	28	39
Argyll & Bute	5,735	19	24
Clackmannanshire	3,042	11	23
Dumfries & Galloway	9,581	65	67
Dundee City	8,433	89	100
East Ayrshire	8,139	56	50
East Dunbartonshire	8,348	7	11
East Lothian	5,803	21	42
East Renfrewshire	7,705	19	9
Edinburgh City	19,978	185	111
Eilean Siar	1,882	16	6
Falkirk	9,119	24	36
Fife	22,213	38	114
Glasgow City	28,499	221	125
Highland	14,908	64	56
Inverclyde	5,444	12	19
Midlothian	5,502	22	41
Moray	5,990	37	26
North Ayrshire	9,203	83	72
North Lanarkshire	22,123	85	66
Orkney Islands	1,427	-----10-----	
Perth & Kinross	8,023	28	34
Renfrewshire	11,506	32	40
Scottish Borders	6,971	25	29
Shetland Islands	1,673	-----24-----	
South Ayrshire	7,350	57	43
South Lanarkshire	20,170	64	56
Stirling	6,022	24	35
West Dunbartonshire	6,255	30	28
West Lothian	10,967	60	68
All local authorities	315,256	1,530	1,477
Grant aided	584	-	-

## LOCAL AUTHORITY: SECONDARY

Table 7.8: Secondary pupils by ethnicity, 2005

	Total pupils	Of which		Of which percentage	
		Minority ethnic	Not known	Minority ethnic <sup>(1)</sup>	Not known
Aberdeen City	10,375	463	530	4	5
Aberdeenshire	15,836	168	484	1	3
Angus	7,034	81	808	1	11
Argyll & Bute	5,735	88	148	2	3
Clackmannanshire	3,042	42	83	1	3
Dumfries & Galloway	9,581	138	245	1	3
Dundee City	8,433	355	783	4	9
East Ayrshire	8,139	93	75	1	1
East Dunbartonshire	8,348	460	113	6	1
East Lothian	5,803	74	307	1	5
East Renfrewshire	7,705	717	98	9	1
Edinburgh City	19,978	1,490	365	7	2
Eilean Siar	1,882	30	19	2	1
Falkirk	9,119	173	449	2	5
Fife	22,213	451	511	2	2
Glasgow City	28,499	2,810	577	10	2
Highland	14,908	213	320	1	2
Inverclyde	5,444	103	101	2	2
Midlothian	5,502	94	399	2	7
Moray	5,990	75	117	1	2
North Ayrshire	9,203	151	87	2	1
North Lanarkshire	22,123	458	305	2	1
Orkney Islands	1,427	11	207	1	15
Perth & Kinross	8,023	137	193	2	2
Renfrewshire	11,506	267	178	2	2
Scottish Borders	6,971	71	106	1	2
Shetland Islands	1,673	23	35	1	2
South Ayrshire	7,350	125	89	2	1
South Lanarkshire	20,170	438	237	2	1
Stirling	6,022	122	70	2	1
West Dunbartonshire	6,255	79	163	1	3
West Lothian	10,967	229	413	2	4
All local authorities	315,256	10,229	8,615	3	3
Grant aided	584	52	6	9	1

(1) Percentage of those with known ethnic background. Minority ethnic includes all categories other than White-UK and White-Other.

National figures on page 29.



## LOCAL AUTHORITY: SECONDARY

Table 7.9: Secondary pupils who attend schools outwith their local authority of residence, 2003-2005<sup>(1)</sup>

Local authority of residence	Total pupils 2005	Go to a school outwith area 2003		Go to a school outwith area 2004		Go to a school outwith area 2005	
		Number	%	Number	%	Number	%
Aberdeen City	9,839	181	1.8	174	1.7	157	1.6
Aberdeenshire	16,205	723	4.5	697	4.3	682	4.2
Angus	6,951	194	2.8	199	2.9	229	3.3
Argyll & Bute	5,778	130	2.3	132	2.2	136	2.4
Clackmannanshire	3,216	203	6.5	201	6.2	218	6.8
Dumfries & Galloway	9,464	9	0.1	11	0.1	9	0.1
Dundee City	8,250	280	3.3	237	2.9	244	3.0
East Ayrshire	8,317	348	4.2	326	3.9	343	4.1
East Dunbartonshire	7,288	469	6.2	454	6.1	457	6.3
East Lothian	5,985	265	4.6	257	4.3	285	4.8
East Renfrewshire	6,302	122	2.0	125	2.0	123	2.0
Edinburgh City	19,463	208	1.1	207	1.1	189	1.0
Eilean Siar	1,866	1	0.1	1	0.1	2	0.1
Falkirk	9,381	360	3.9	382	4.1	403	4.3
Fife	22,184	123	0.5	134	0.6	129	0.6
Glasgow City	30,911	4,588	14.3	4,316	13.7	4,094	13.2
Highland	14,807	34	0.2	32	0.2	31	0.2
Inverclyde	5,429	72	1.3	60	1.1	67	1.2
Midlothian	5,229	89	1.7	99	1.9	97	1.9
Moray	5,847	34	0.6	31	0.5	30	0.5
North Ayrshire	9,308	210	2.2	191	2.1	184	2.0
North Lanarkshire	21,754	1,269	5.8	1,289	5.9	1,357	6.2
Orkney Islands	1,417	-	-	3	0.2	2	0.1
Perth & Kinross	8,217	303	3.8	296	3.7	336	4.1
Renfrewshire	10,992	152	1.4	144	1.3	152	1.4
Scottish Borders	6,980	88	1.3	100	1.4	100	1.4
Shetland Islands	1,669	-	-	1	0.1	1	0.1
South Ayrshire	7,064	67	0.9	74	1.0	75	1.1
South Lanarkshire	19,582	865	4.5	905	4.7	902	4.6
Stirling	5,383	52	1.0	54	1.0	54	1.0
West Dunbartonshire	6,083	369	5.9	357	5.8	345	5.7
West Lothian	11,179	297	2.7	337	3.1	340	3.0
<b>All local authorities</b>	<b>312,340</b>	<b>12,105</b>	<b>3.9</b>	<b>11,826</b>	<b>3.8</b>	<b>11,773</b>	<b>3.8</b>

(1) Figures do not include pupils in grant aided schools. Local authority of residence not identified for a further 2,919 pupils.

LOCAL AUTHORITY: SECONDARY

Table 7.10: Secondary pupils who attend schools but who live outwith the local authority, 2003-2005<sup>(1)</sup>

Local authority of school	Total pupils 2005	Come from outwith area 2003		Come from outwith area 2004		Come from outwith area 2005	
		Number	%	Number	%	Number	%
Aberdeen City	10,327	680	6.5	656	6.3	645	6.2
Aberdeenshire	15,765	247	1.6	250	1.6	242	1.5
Angus	7,021	331	4.7	288	4.1	299	4.3
Argyll & Bute	5,681	46	0.8	41	0.7	39	0.7
Clackmannanshire	3,027	37	1.2	32	1.0	29	1.0
Dumfries & Galloway	9,494	47	0.5	45	0.5	39	0.4
Dundee City	8,407	381	4.5	378	4.5	401	4.8
East Ayrshire	8,085	115	1.4	122	1.5	111	1.4
East Dunbartonshire	8,247	1,822	20.5	1,608	18.7	1,416	17.2
East Lothian	5,759	60	1.1	78	1.4	59	1.0
East Renfrewshire	7,638	1,423	18.9	1,427	18.9	1,459	19.1
Edinburgh City	19,813	486	2.4	540	2.7	539	2.7
Eilean Siar	1,864	-	-	-	-	-	-
Falkirk	9,036	49	0.6	49	0.5	58	0.6
Fife	22,098	30	0.1	31	0.1	43	0.2
Glasgow City	27,778	858	3.0	876	3.1	961	3.5
Highland	14,799	16	0.1	17	0.1	23	0.2
Inverclyde	5,392	44	0.8	28	0.5	30	0.6
Midlothian	5,469	323	5.8	320	5.8	337	6.2
Moray	5,840	20	0.3	25	0.4	23	0.4
North Ayrshire	9,173	45	0.5	40	0.4	49	0.5
North Lanarkshire	21,935	1,516	6.8	1,528	6.9	1,538	7.0
Orkney Islands	1,415	-	-	-	-	-	-
Perth & Kinross	7,975	77	1.0	75	1.0	94	1.2
Renfrewshire	11,389	584	5.0	549	4.8	549	4.8
Scottish Borders	6,900	17	0.2	18	0.3	20	0.3
Shetland Islands	1,668	-	-	-	-	-	-
South Ayrshire	7,311	351	4.7	330	4.5	322	4.4
South Lanarkshire	19,965	1,320	6.7	1,306	6.6	1,285	6.4
Stirling	5,980	632	10.7	646	10.8	651	10.9
West Dunbartonshire	6,190	498	7.8	461	7.3	452	7.3
West Lothian	10,899	50	0.5	62	0.6	60	0.6
<b>All local authorities</b>	<b>312,340</b>	<b>12,105</b>	<b>3.9</b>	<b>11,826</b>	<b>3.8</b>	<b>11,773</b>	<b>3.8</b>

(1) Figures do not include pupils in grant aided schools. Local authority of residence not identified for a further 2,919 pupils.

## LOCAL AUTHORITY: SECONDARY

Table 7.11: Staying on rates of secondary pupils, 2005<sup>(1)</sup>

	Female		Male		All pupils	
	S3-S5	S3-S6	S3-S5	S3-S6	S3-S5	S3-S6
Aberdeen City	75.0	47.5	67.5	39.7	71.3	43.4
Aberdeenshire	76.8	48.1	64.7	38.5	70.7	43.2
Angus	74.3	46.2	60.9	35.8	67.5	41.0
Argyll & Bute	88.1	57.4	79.8	42.4	84.1	49.0
Clackmannanshire	78.6	45.5	68.3	28.4	73.4	36.2
Dumfries & Galloway	74.9	49.8	66.1	35.4	70.2	42.3
Dundee City	72.3	44.5	65.2	36.6	68.6	40.4
East Ayrshire	78.2	46.3	70.2	38.7	74.2	42.1
East Dunbartonshire	86.3	56.6	82.4	51.0	84.3	53.7
East Lothian	84.1	46.4	74.7	43.6	79.5	45.0
East Renfrewshire	91.9	70.7	90.1	59.7	91.0	65.0
Edinburgh City	79.7	48.0	76.4	44.8	78.1	46.4
Eilean Siar	82.5	69.5	72.9	38.7	77.4	53.1
Falkirk	83.7	48.2	78.7	36.3	81.3	42.2
Fife	74.9	45.5	69.6	41.1	72.1	43.3
Glasgow City	74.4	35.0	67.2	27.6	70.8	31.4
Highland	84.2	51.9	76.8	45.7	80.3	48.6
Inverclyde	84.6	53.9	78.0	45.2	81.3	49.3
Midlothian	75.8	48.0	69.2	34.0	72.4	40.8
Moray	80.3	46.9	69.3	37.3	74.6	42.2
North Ayrshire	80.7	40.4	74.3	37.6	77.4	39.0
North Lanarkshire	82.1	47.2	71.2	34.9	76.7	41.0
Orkney Islands	79.1	57.9	69.3	30.9	73.6	43.5
Perth & Kinross	83.4	53.1	81.1	45.7	82.1	49.4
Renfrewshire	81.4	49.0	77.8	36.9	79.6	42.7
Scottish Borders	74.5	54.8	65.2	41.5	69.9	47.9
Shetland Islands	82.9	56.1	71.2	31.5	77.3	43.4
South Ayrshire	79.8	53.3	79.7	42.6	79.8	47.8
South Lanarkshire	81.0	47.8	75.6	41.5	78.2	44.6
Stirling	88.4	58.7	81.0	51.1	84.6	54.7
West Dunbartonshire	80.0	42.5	75.9	37.3	78.0	39.9
West Lothian	80.3	47.3	70.9	36.8	75.4	41.8
All local authorities	79.6	47.8	72.6	39.3	76.0	43.5
Grant aided	103.3	76.9	107.9	90.2	105.1	85.0

(1) The S5 stage staying-on rates are based on S3 pupils 2 years earlier, and S6 rates on S3 pupils 3 years earlier. Where significant numbers of pupils are taken on in S5 this can result in staying-on rates of over 100%.

Post Christmas staying-on rates were not available at time of publication.

1999-05 stage roll data used to calculate staying-on rates includes pupils in special units. National averages have been calculated from the figures for all available local authority and grant-aided schools, whereas the local authority averages are based on local authority schools only.

National figures on page 30.

## LOCAL AUTHORITY: SECONDARY

Table 7.12: Secondary pupils receiving Gaelic medium education, 2005

	Some subjects other than Gaelic taught through Gaelic	Gaelic the only subject taught through Gaelic	Gaelic taught as a learner	No Gaelic taught
Aberdeen City	-	30	-	10,345
Aberdeenshire	-	-	-	15,836
Angus	*	-	*	7,025
Argyll & Bute	-	122	292	5,321
Clackmannanshire	-	-	-	3,042
Dumfries & Galloway	-	-	-	9,581
Dundee City	-	-	-	8,433
East Ayrshire	*	*	-	8,128
East Dunbartonshire	-	11	-	8,337
East Lothian	-	-	-	5,803
East Renfrewshire	-	-	-	7,705
Edinburgh City	-	*	*	19,943
Eilean Siar	27	452	882	521
Falkirk	-	-	-	9,119
Fife	-	-	-	22,213
Glasgow City	*	-	*	28,439
Highland	317	588	882	13,121
Inverclyde	-	-	-	5,444
Midlothian	-	-	-	5,502
Moray	-	-	-	5,990
North Ayrshire	-	-	-	9,203
North Lanarkshire	*	-	*	22,102
Orkney Islands	-	-	-	1,427
Perth & Kinross	*	*	29	7,978
Renfrewshire	-	-	-	11,506
Scottish Borders	-	*	*	6,970
Shetland Islands	-	-	-	1,673
South Ayrshire	-	-	-	7,350
South Lanarkshire	-	28	-	20,142
Stirling	-	7	-	6,015
West Dunbartonshire	-	-	-	6,255
West Lothian	-	-	-	10,967
All local authorities	433	1,292	2,095	311,436
Grant aided	-	-	-	584

**Local Authority: Special**Table 8.1: Publicly funded special schools, 1997-2005<sup>(1)</sup>

	1997	1998	1999	2000	2001	2002	2003	2004	2005
Aberdeen City	10	11	11	11	11	9	11	11	11
Aberdeenshire	6	8	8	7	6	4	4	4	4
Angus	-	-	-	-	-	-	-	-	-
Argyll & Bute	3	3	3	3	3	3	3	3	3
Clackmannanshire	2	2	2	2	2	2	4	4	4
Dumfries & Galloway	2	2	3	3	3	3	4	4	2
Dundee City	1	1	1	1	1	1	1	1	1
East Ayrshire	5	4	4	4	4	7	7	7	7
East Dunbartonshire	2	6	6	8	8	7	5	5	7
East Lothian	-	-	-	-	-	-	-	-	1
East Renfrewshire	1	1	1	2	2	1	1	1	1
Edinburgh City	13	13	13	13	13	16	16	16	13
Eilean Siar	-	-	-	-	-	-	-	-	-
Falkirk	4	7	7	7	7	6	6	6	6
Fife	11	17	17	17	18	17	17	16	16
Glasgow City	36	42	49	49	51	51	47	46	47
Highland	3	3	3	3	4	4	6	6	5
Inverclyde	3	3	4	4	5	5	4	4	4
Midlothian	3	4	4	4	2	2	2	2	3
Moray	2	2	-	-	-	-	-	-	-
North Ayrshire	4	4	4	4	4	4	4	4	4
North Lanarkshire	10	12	12	11	11	11	11	11	11
Orkney Islands	1	1	1	1	1	1	1	-	-
Perth & Kinross	2	2	2	2	2	2	2	2	2
Renfrewshire	4	4	4	4	4	4	4	4	3
Scottish Borders	-	1	2	2	2	2	2	2	2
Shetland Islands	-	-	1	1	1	-	-	-	-
South Ayrshire	4	4	4	4	4	4	3	3	3
South Lanarkshire	9	8	9	9	9	9	9	9	9
Stirling	3	6	6	6	6	3	5	4	4
West Dunbartonshire	3	3	3	2	2	2	3	3	3
West Lothian	4	4	4	4	4	4	5	7	7
All local authorities	151	178	188	188	190	184	187	185	183
Grant aided	7	7	7	7	7	7	7	7	7

(1) See background note 6.7.  
National figures on page 31.

## LOCAL AUTHORITY: SPECIAL

Table 8.2: Pupils based in publicly funded special schools, 2000-2005<sup>(1)</sup>

	2000	2001	2002	2003	2004	2005		
						Female	Male	Total
Aberdeen City	376	356	289	273	267	102	173	275
Aberdeenshire	335	317	268	275	253	68	175	243
Angus	#	#	#	#	#	#	#	#
Argyll & Bute	57	55	58	51	45	12	32	44
Clackmannanshire	57	52	43	37	37	17	20	37
Dumfries & Galloway	33	34	47	49	28	5	7	12
Dundee City	160	150	149	142	128	37	82	119
East Ayrshire	162	160	193	193	189	60	117	177
East Dunbartonshire	176	185	168	156	160	56	104	160
East Lothian	#	#	#	#	#	-	-	-
East Renfrewshire	44	45	47	51	51	16	36	52
Edinburgh City	789	743	767	751	735	196	536	732
Eilean Siar	#	#	#	#	#	#	#	#
Falkirk	309	283	266	227	210	70	122	192
Fife	233	200	161	157	159	61	86	147
Glasgow City	2,241	2,206	2,194	1,969	1,904	566	1,278	1,844
Highland	171	172	173	176	172	59	115	174
Inverclyde	147	161	160	146	140	39	92	131
Midlothian	189	182	133	166	166	49	116	165
Moray	#	#	#	#	#	#	#	#
North Ayrshire	184	174	171	171	175	59	108	167
North Lanarkshire	782	796	797	809	744	253	511	764
Orkney Islands	20	19	19	22	-	-	#	#
Perth & Kinross	59	58	59	55	54	16	37	53
Renfrewshire	327	334	324	322	305	105	194	299
Scottish Borders	-	5	-	-	-	-	-	-
Shetland Islands	24	30	#	#	#	#	#	#
South Ayrshire	83	86	85	89	85	29	60	89
South Lanarkshire	575	597	607	556	559	155	360	515
Stirling	63	60	43	39	41	14	20	34
West Dunbartonshire	136	128	125	133	124	46	79	125
West Lothian	197	192	219	252	279	79	151	230
All local authorities	7,929	7,780	7,565	7,267	7,010	2,169	4,611	6,780
Grant aided	389	403	416	413	379	133	227	360

(1) See background note 6.7.  
National figures on page 31.

## LOCAL AUTHORITY: SPECIAL

Table 8.3: Special schools and pupils by school denomination, 2005

	Schools			Pupil roll		
	Non-denominational	Roman Catholic	Other denomination	Non-denominational	Roman Catholic	Other denomination
Aberdeen City	10	1	-	275	-	-
Aberdeenshire	4	-	-	243	-	-
Angus	-	-	-	-	-	-
Argyll & Bute	3	-	-	44	-	-
Clackmannanshire	4	-	-	37	-	-
Dumfries & Galloway	2	-	-	12	-	-
Dundee City	1	-	-	119	-	-
East Ayrshire	7	-	-	177	-	-
East Dunbartonshire	7	-	-	160	-	-
East Lothian	1	-	-	-	-	-
East Renfrewshire	1	-	-	52	-	-
Edinburgh City	13	-	-	732	-	-
Eilean Siar	-	-	-	-	-	-
Falkirk	6	-	-	192	-	-
Fife	16	-	-	147	-	-
Glasgow City	16	6	25	773	364	707
Highland	5	-	-	174	-	-
Inverclyde	4	-	-	131	-	-
Midlothian	3	-	-	165	-	-
Moray	-	-	-	-	-	-
North Ayrshire	4	-	-	167	-	-
North Lanarkshire	11	-	-	764	-	-
Orkney Islands	-	-	-	-	-	-
Perth & Kinross	2	-	-	53	-	-
Renfrewshire	3	-	-	299	-	-
Scottish Borders	2	-	-	-	-	-
Shetland Islands	-	-	-	-	-	-
South Ayrshire	3	-	-	89	-	-
South Lanarkshire	9	-	-	515	-	-
Stirling	4	-	-	34	-	-
West Dunbartonshire	3	-	-	125	-	-
West Lothian	7	-	-	230	-	-
All local authorities	151	7	25	5,709	364	707
Grant aided	7	-	-	360	-	-

National figures on page 31.

## LOCAL AUTHORITY: SPECIAL

Table 8.4: Pupils based in special schools by age, 2005 <sup>(1)</sup>

	4	5	6	7	8	9	10	11
Aberdeen City	11	8	11	6	12	7	14	16
Aberdeenshire	6	16	15	23	22	10	16	22
Angus	#	#	#	#	#	#	#	#
Argyll & Bute	-	-	*	*	*	*	*	5
Clackmannanshire	-	-	6	*	*	*	*	6
Dumfries & Galloway	-	-	-	-	-	-	-	-
Dundee City	-	*	*	6	5	11	9	7
East Ayrshire	-	*	*	13	14	11	17	14
East Dunbartonshire	8	13	7	7	6	9	11	8
East Lothian	-	-	-	-	-	-	-	-
East Renfrewshire	-	*	6	5	*	*	*	6
Edinburgh City	*	*	34	38	54	41	45	57
Eilean Siar	#	#	#	#	#	#	#	#
Falkirk	-	*	*	5	5	*	*	15
Fife	-	7	12	10	10	6	8	12
Glasgow City	-	61	117	129	121	133	134	152
Highland	*	8	*	8	13	5	10	11
Inverclyde	-	7	11	8	6	8	8	7
Midlothian	-	*	*	7	*	8	7	*
Moray	#	#	#	#	#	#	#	#
North Ayrshire	-	*	*	12	11	7	12	*
North Lanarkshire	-	32	32	42	52	55	44	50
Orkney Islands	#	#	#	#	#	#	#	#
Perth & Kinross	-	*	*	*	*	*	*	*
Renfrewshire	-	7	10	18	26	16	18	18
Scottish Borders	-	-	-	-	-	-	-	-
Shetland Islands	#	#	#	#	#	#	#	#
South Ayrshire	*	8	7	*	13	6	*	*
South Lanarkshire	-	14	24	15	18	18	21	25
Stirling	*	8	*	*	*	*	6	5
West Dunbartonshire	-	*	12	*	6	8	7	10
West Lothian	12	22	6	9	9	22	10	18
All local authorities	47	259	348	374	420	398	415	480
Grant aided	11	12	10	15	18	27	23	23

(1) There were 54 pupils for whom age was outwith the standard range.  
National figures on page 32.



## LOCAL AUTHORITY: SPECIAL

Table 8.4 (cont.): Pupils based in special schools by age, 2005 <sup>(1)</sup>

12	13	14	15	16	17	18	19	
22	27	41	30	37	15	11	-	Aberdeen City
14	15	35	21	7	10	8	-	Aberdeenshire
#	#	#	#	#	#	#	#	Angus
*	*	8	*	*	*	*	*	Argyll & Bute
*	*	-	*	*	*	*	-	Clackmannanshire
-	*	*	*	*	*	*	-	Dumfries & Galloway
6	8	17	15	10	11	5	-	Dundee City
11	10	20	18	13	14	*	*	East Ayrshire
18	14	6	20	11	11	*	*	East Dunbartonshire
-	-	-	-	-	-	-	-	East Lothian
-	7	*	*	*	*	*	-	East Renfrewshire
58	72	94	109	76	22	*	-	Edinburgh City
#	#	#	#	#	#	#	#	Eilean Siar
18	37	28	31	23	14	*	-	Falkirk
7	14	11	11	14	17	7	-	Fife
150	170	156	158	162	154	41	6	Glasgow City
16	10	11	22	21	15	*	*	Highland
10	11	18	15	8	*	*	*	Inverclyde
17	13	21	37	*	*	-	-	Midlothian
#	#	#	#	#	#	#	#	Moray
8	19	24	22	9	18	9	-	North Ayrshire
63	68	86	84	77	51	*	*	North Lanarkshire
#	#	#	#	#	#	#	#	Orkney Islands
5	8	12	*	5	*	-	-	Perth & Kinross
30	37	29	31	28	22	*	*	Renfrewshire
-	-	-	-	-	-	-	-	Scottish Borders
#	#	#	#	#	#	#	#	Shetland Islands
7	8	*	6	7	5	*	-	South Ayrshire
42	66	77	77	70	42	*	*	South Lanarkshire
*	-	*	-	-	-	*	-	Stirling
6	*	10	22	15	9	7	*	West Dunbartonshire
9	15	19	31	22	*	*	-	West Lothian
525	639	732	775	666	478	180	19	All local authorities
24	34	29	36	38	25	*	*	Grant aided

LOCAL AUTHORITY: SPECIAL

Table 8.5: Main difficulty of learning for pupils based in special schools with a Record of Needs and/or an Individualised Educational Programme, 2005

	Total	Significant hearing impairment	Significant visual impairment	Significant physical or motor impairment	Significant language and speech disorder	Autistic spectrum disorder	Social emotional and behavioural difficulties	Moderate learning difficulties	Severe learning difficulties
Aberdeen City	274	*	*	*	*	24	41	48	17
Aberdeenshire	243	-	-	*	9	70	7	37	28
Angus	#	#	#	#	#	#	#	#	#
Argyll & Bute	44	-	-	-	*	11	*	6	*
Clackmannanshire	37	-	-	-	*	*	-	*	*
Dumfries & Galloway	12	-	-	-	-	*	-	-	-
Dundee City	119	-	-	-	-	26	*	*	*
East Ayrshire	177	-	*	*	*	17	18	40	55
East Dunbartonshire	157	-	*	-	9	32	*	26	9
East Lothian	-	-	-	-	-	-	-	-	-
East Renfrewshire	52	-	-	-	-	14	-	-	-
Edinburgh, City of	732	-	-	57	6	103	189	104	10
Eilean Siar	#	#	#	#	#	#	#	#	#
Falkirk	192	17	-	*	-	18	-	115	*
Fife	147	-	*	-	-	34	*	-	14
Glasgow City	1,818	47	47	138	57	206	98	603	148
Highland	174	*	*	-	9	53	10	23	34
Inverclyde	131	5	-	-	-	22	*	20	9
Midlothian	107	-	*	-	-	16	*	41	18
Moray	#	#	#	#	#	#	#	#	#
North Ayrshire	163	*	*	-	*	19	10	56	*
North Lanarkshire	764	*	*	11	5	54	114	173	53
Orkney Islands	#	#	#	#	#	#	#	#	#
Perth & Kinross	53	-	-	*	*	5	-	12	*
Renfrewshire	299	-	-	*	*	43	*	135	45
Scottish Borders	-	-	-	-	-	-	-	-	-
Shetland Islands	#	#	#	#	#	#	#	#	#
South Ayrshire	89	-	-	*	-	19	*	*	19
South Lanarkshire	515	16	*	*	26	43	59	172	39
Stirling	34	-	*	*	-	-	-	6	*
West Dunbartonshire	125	-	-	*	-	11	8	41	19
West Lothian	230	-	-	*	14	52	36	32	51
All local authorities	6,688	94	61	226	144	899	612	1,702	588
Grant aided <sup>(1)</sup>	349	40	121	39	14	24	25	-	-

(1) Where totals are published elsewhere, figures marked \* for grant aided have been assumed to be 2. National figures on page 33.

LOCAL AUTHORITY: SPECIAL

Table 8.5 (cont.): Main difficulty of learning for pupils based in special schools with a Record of Needs and/or an Individualised Educational Programme, 2005

Profound learning difficulties	Specific learning difficulties in language and/or mathematics (including dyslexia)	Complex or multiple impairments - Dual sensory impairment	Complex or multiple impairments - moderate learning difficulties	Complex or multiple impairments - severe learning difficulties	Complex or multiple impairments - profound learning difficulties	Other	Not known / Not disclosed	
-	6	-	38	82	9	*	-	Aberdeen City
*	-	-	21	51	14	*	-	Aberdeenshire
#	#	#	#	#	#	#	#	Angus
*	-	-	*	7	5	*	-	Argyll & Bute
*	-	-	10	14	*	*	-	Clackmannanshire
*	-	-	-	7	*	-	-	Dumfries & Galloway
-	-	-	15	50	19	-	-	Dundee City
-	*	-	8	13	8	10	-	East Ayrshire
*	*	-	20	28	13	15	-	East Dunbartonshire
-	-	-	-	-	-	-	-	East Lothian
-	-	-	-	25	13	-	-	East Renfrewshire
*	6	*	116	77	30	25	-	Edinburgh, City of
#	#	#	#	#	#	#	#	Eilean Siar
-	*	*	10	18	*	*	-	Falkirk
*	-	-	*	65	26	-	-	Fife
5	20	9	169	67	53	151	-	Glasgow City
5	*	*	3	12	17	*	-	Highland
*	-	*	40	12	14	*	-	Inverclyde
*	-	-	12	10	-	-	-	Midlothian
#	#	#	#	#	#	#	#	Moray
*	-	-	23	23	9	11	-	North Ayrshire
9	*	*	180	57	31	67	-	North Lanarkshire
#	#	#	#	#	#	#	#	Orkney Islands
*	*	-	*	*	19	*	-	Perth & Kinross
*	-	-	18	31	15	7	-	Renfrewshire
-	-	-	-	-	-	-	-	Scottish Borders
#	#	#	#	#	#	#	#	Shetland Islands
-	-	-	*	12	20	10	-	South Ayrshire
9	9	-	60	34	16	26	-	South Lanarkshire
-	-	*	*	*	12	-	-	Stirling
*	-	-	8	6	9	18	-	West Dunbartonshire
*	*	-	8	7	10	11	-	West Lothian
61	59	19	776	715	369	363	-	All local authorities
*	-	*	8	30	44	-	-	Grant aided

## LOCAL AUTHORITY: SPECIAL

Table 8.6: Pupils based in special schools with a Record of Needs (RoN) and/or an Individualised Educational Programme (IEP), 2005

	All pupils with RoN and/or IEP	With RoN only	With IEP only	With both RoN and IEP	Percentage of pupils with RoN and/or IEP
Aberdeen City	274	-	68	206	99.6
Aberdeenshire	243	-	40	203	100.0
Angus	#	#	#	#	#
Argyll & Bute	44	-	*	*	100.0
Clackmannanshire	37	-	-	37	100.0
Dumfries & Galloway	12	-	*	*	100.0
Dundee City	119	*	9	*	100.0
East Ayrshire	177	5	41	131	100.0
East Dunbartonshire	157	-	44	113	98.1
East Lothian	-	-	-	-	#
East Renfrewshire	52	-	19	33	100.0
Edinburgh City	732	6	155	571	100.0
Eilean Siar	#	#	#	#	#
Falkirk	192	*	29	*	100.0
Fife	147	*	5	*	100.0
Glasgow City	1,818	147	475	1,196	98.6
Highland	174	-	29	145	100.0
Inverclyde	131	-	23	108	100.0
Midlothian	107	-	36	71	64.8
Moray	#	#	#	#	#
North Ayrshire	163	7	11	145	97.6
North Lanarkshire	764	23	306	435	100.0
Orkney Islands	#	#	#	#	#
Perth & Kinross	53	-	-	53	100.0
Renfrewshire	299	*	-	*	100.0
Scottish Borders	-	-	-	-	#
Shetland Islands	#	#	#	#	#
South Ayrshire	89	-	22	67	100.0
South Lanarkshire	515	*	131	*	100.0
Stirling	34	-	9	25	100.0
West Dunbartonshire	125	*	47	*	100.0
West Lothian	230	-	109	121	100.0
All local authorities	6,688	201	1,613	4,874	98.6
Grant aided <sup>(1)</sup>	349	*	52	*	96.9

(1) Where totals are published elsewhere, the figure for with RoN only in grant aided schools has been assumed to be 2. National figures on page 32.

Table 8.7: Looked after children in special schools by local authority of school, 2005

	All pupils	Children looked after:	
		At home	Away from home
Aberdeen City	275	14	15
Aberdeenshire	243	-	7
Angus	#	#	#
Argyll & Bute	44	-	*
Clackmannanshire	37	-	-
Dumfries & Galloway	12		-----8-----
Dundee City	119		-----8-----
East Ayrshire	177	9	18
East Dunbartonshire	160	-	*
East Lothian	-	-	-
East Renfrewshire	52	-	-
Edinburgh City	732	67	79
Eilean Siar	#	#	#
Falkirk	192		-----6-----
Fife	147		-----16-----
Glasgow City	1,844	200	55
Highland	174	37	5
Inverclyde	131		-----8-----
Midlothian	165		-----10-----
Moray	#	#	#
North Ayrshire	167		-----18-----
North Lanarkshire	764	27	25
Orkney Islands	#	#	#
Perth & Kinross	53		-----2-----
Renfrewshire	299		-----13-----
Scottish Borders	-	-	-
Shetland Islands	#	#	#
South Ayrshire	89	49	-
South Lanarkshire	515	14	11
Stirling	34	-	11
West Dunbartonshire	125		-----5-----
West Lothian	230	5	6
All local authorities	6,780	460	290
Grant aided	360	135	225

## LOCAL AUTHORITY: SPECIAL

Table 8.8: Pupils based in special schools by ethnicity, 2005

	Total pupils	Of which		Of which percentage	
		Minority ethnic <sup>(1)</sup>	Not known	Minority ethnic <sup>(1)</sup>	Not known
Aberdeen City	275	10	58	4	21
Aberdeenshire	243	*	-	*	-
Angus	#	#	#	#	#
Argyll & Bute	44	*	*	*	*
Clackmannanshire	37	-	-	-	-
Dumfries & Galloway	12	*	-	8	-
Dundee City	119	7	4	6	3
East Ayrshire	177	2	6	1	3
East Dunbartonshire	160	7	-	4	-
East Lothian	-	-	-	-	-
East Renfrewshire	52	7	-	13	-
Edinburgh City	732	50	3	7	-
Eilean Siar	#	#	#	#	#
Falkirk	192	6	14	3	7
Fife	147	3	5	2	3
Glasgow City	1,844	179	111	10	6
Highland	174	2	10	1	6
Inverclyde	131	*	*	*	*
Midlothian	165	*	*	*	*
Moray	#	#	#	#	#
North Ayrshire	167	1	9	1	5
North Lanarkshire	764	7	23	1	3
Orkney Islands	#	#	#	#	#
Perth & Kinross	53	*	*	*	*
Renfrewshire	299	*	*	*	*
Scottish Borders	-	-	-	-	-
Shetland Islands	#	#	#	#	#
South Ayrshire	89	*	*	*	*
South Lanarkshire	515	8	9	2	2
Stirling	34	-	-	-	-
West Dunbartonshire	125	4	15	3	12
West Lothian	230	9	17	4	7
All local authorities	6,780	317	296	5	4
Grant aided	360	-	360	-	100

(1) Percentage of those with known ethnic background. Minority ethnic includes all categories other than White-UK and White-Other.

National figures on page 34.

## LOCAL AUTHORITY: SPECIAL

Table 8.9: Pupils based in special schools who attend schools outwith their local authority of residence, 2004 & 2005<sup>(1)</sup>

Local authority of residence	Total pupils 2005	Go to a school outwith area 2003		Go to a school outwith area 2004		Go to a school outwith area 2005	
		Number	%	Number	%	Number	%
Aberdeen City	266	1	-	-	-	-	-
Aberdeenshire	246	11	4	10	4	9	4
Angus	22	35	100	23	100	22	100
Argyll & Bute	43	6	14	9	21	8	19
Clackmannanshire	39	10	26	5	14	6	14
Dumfries & Galloway	13	1	2	1	3	1	8
Dundee City	94	-	-	-	-	-	-
East Ayrshire	181	7	4	5	3	7	4
East Dunbartonshire	160	24	15	24	15	16	10
East Lothian	34	46	100	37	100	34	100
East Renfrewshire	71	35	44	26	36	23	32
Edinburgh City	674	19	3	12	2	12	2
Eilean Siar	-	-	#	-	#	-	#
Falkirk	192	11	5	6	3	9	5
Fife	146	1	1	2	1	1	1
Glasgow City	1,686	30	2	27	2	27	2
Highland	170	-	-	-	-	-	-
Inverclyde	124	4	3	3	2	2	2
Midlothian	156	12	9	18	12	18	12
Moray	-	-	#	-	#	-	#
North Ayrshire	169	8	5	10	6	8	5
North Lanarkshire	772	55	7	57	8	46	6
Orkney Islands	-	-	-	-	#	-	#
Perth & Kinross	56	4	7	4	7	3	5
Renfrewshire	290	13	4	14	5	14	5
Scottish Borders	2	2	100	2	100	2	100
Shetland Islands	-	-	#	-	#	-	#
South Ayrshire	85	6	7	5	6	6	7
South Lanarkshire	547	85	14	67	11	51	9
Stirling	38	15	33	10	20	6	16
West Dunbartonshire	134	31	25	24	18	21	16
West Lothian	233	21	8	15	5	12	5
<b>All local authorities</b>	<b>6,643</b>	<b>493</b>	<b>7</b>	<b>416</b>	<b>6</b>	<b>364</b>	<b>5</b>

(1) Figures do not include pupils in grant aided schools. Local authority of residence not identified for a further 137 pupils.

## LOCAL AUTHORITY: SPECIAL

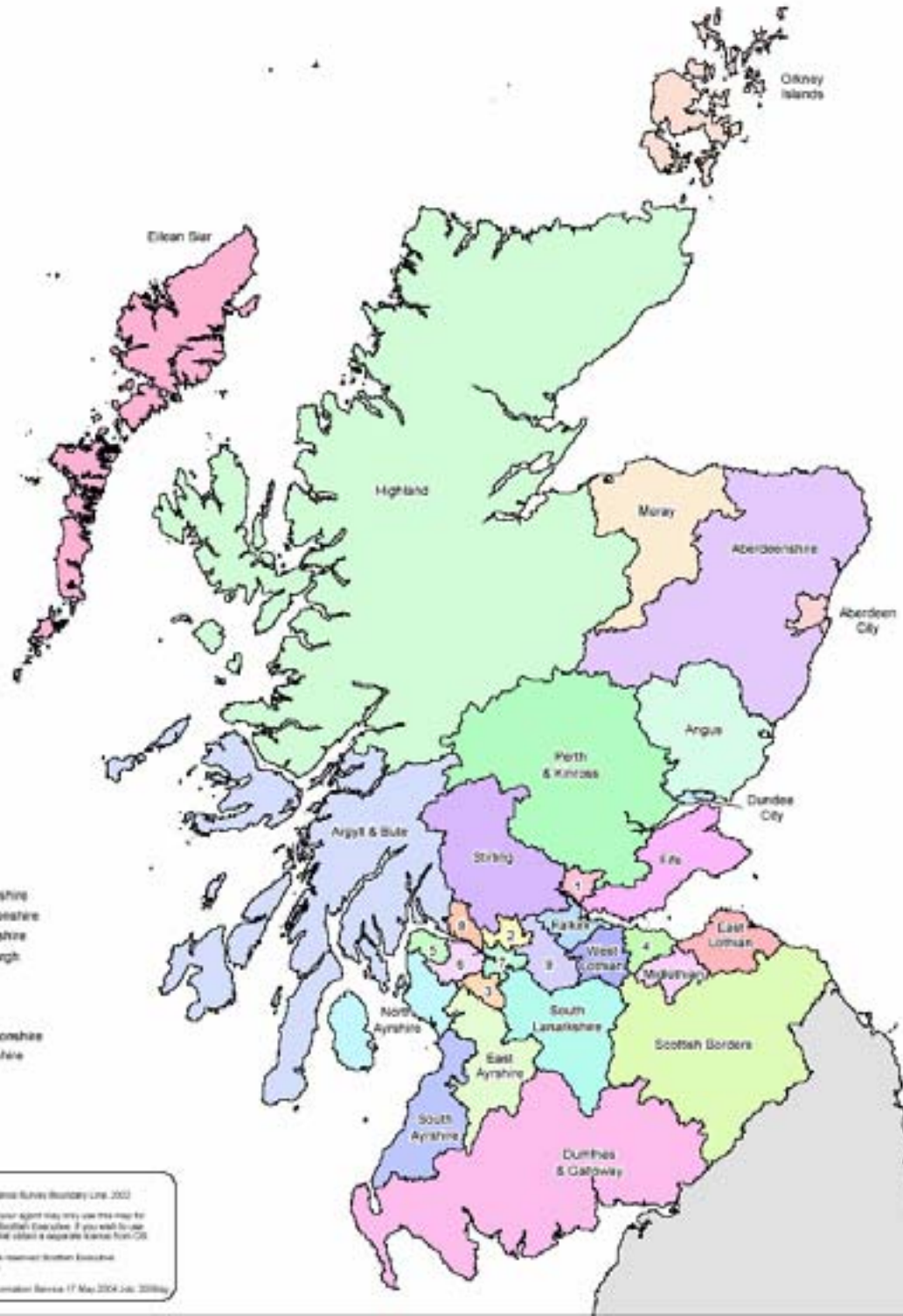
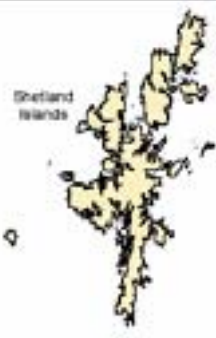
Table 8.10: Pupils based in special schools who attend schools but live outwith the local authority, 2004 & 2005<sup>(1)</sup>

Local authority of school	Total pupils 2005	Come from outwith area 2003		Come from outwith area 2004		Come from outwith area 2005	
		Number	%	Number	%	Number	%
Aberdeen City	275	11	4	10	4	9	3
Aberdeenshire	238	2	1	1	-	1	-
Angus	#	-	#	#	#	#	#
Argyll & Bute	44	12	24	11	25	9	20
Clackmannanshire	36	5	15	4	11	3	8
Dumfries & Galloway	12	-	-	-	-	-	-
Dundee City	118	38	27	26	21	24	20
East Ayrshire	177	4	2	3	2	3	2
East Dunbartonshire	159	17	11	17	11	15	9
East Lothian	-	-	#	-	#	-	#
East Renfrewshire	52	6	12	4	8	4	8
Edinburgh City	715	58	8	59	8	53	7
Eilean Siar	#	-	#	#	#	#	#
Falkirk	192	7	3	9	4	9	5
Fife	145	2	1	-	-	-	-
Glasgow City	1,778	151	8	135	7	119	7
Highland	170	-	-	-	-	-	-
Inverclyde	131	7	5	8	6	9	7
Midlothian	160	40	25	24	15	22	14
Moray	#	-	#	#	#	#	#
North Ayrshire	166	5	3	3	2	5	3
North Lanarkshire	751	53	7	40	6	25	3
Orkney Islands	-	-	-	-	#	-	#
Perth & Kinross	53	-	-	-	-	-	-
Renfrewshire	298	28	9	24	8	22	7
Scottish Borders	-	-	-	-	#	-	#
Shetland Islands	#	-	#	#	#	#	#
South Ayrshire	83	5	6	4	5	4	5
South Lanarkshire	507	16	3	15	3	11	2
Stirling	34	8	21	2	5	2	6
West Dunbartonshire	124	14	13	13	11	11	9
West Lothian	225	4	2	4	1	4	2
All local authorities	6,643	493	7	416	6	364	5

(1) Figures do not include pupils in grant aided schools. Local authority of residence not identified for a further 137 pupils.



# Scottish Local Authorities



- 1 - Clackmannanshire
- 2 - East Dunbartonshire
- 3 - East Renfrewshire
- 4 - City of Edinburgh
- 5 - Inverclyde
- 6 - Renfrewshire
- 7 - Glasgow City
- 8 - West Dunbartonshire
- 9 - North Lanarkshire

Source:  
Local Authority Boundaries - Ordnance Survey Boundary Line 2002

Due to 3rd license conditions, you can only use this map for official business dealings with the Scottish Executive. If you wish to use the map for other uses, you must first obtain a separate license from OS.

All Content Copyright 2004. All rights reserved. Scottish Executive.  
License number: 10020040-2004

Scottish Executive Geographic Information Service 17 May 2004 10:20 AM

## Index

	Background note	Tables	Pages
Additional support needs	6.11, 6.12	1.5, Chart 2, 1.6-1.7, Chart 3, 2.5-2.6, 3.5-3.6, 4.3-4.5, 6.8-6.9, 7.5-7.6, 8.5-8.6	11-13, 18-19, 27-28, 32-33, 48-50, 60-62, 74-76
Age		2.4, 3.4, 4.3, 8.4	17, 26, 32, 72-73
Asylum seekers		1.10, 5.4	15, 38
Class sizes	6.3	2.11-2.20, 6.5-6.7	21-24, 45-47
Composite classes	6.6	2.11-2.13, 6.5	21-22, 45
Denominational schools		1.11, 2.2, 3.2, 4.2, 6.3, 7.3, 8.3	15, 16, 25, 31, 43, 58, 71
Deprivation		1.3, Chart 3, 2.7-2.8, 3.7-3.8, 4.6, 5.6	11, 13, 19, 20, 28-29, 33, 40
Ethnicity	6.7, 8.2	1.8, Chart 4, 1.9-1.10, 2.9-2.10, 3.9-3.10, 4.8, 5.5, 6.11, 7.8, 8.8	13-15, 20-21, 29-30, 34, 39, 52, 64, 78
Free meal registration	6.10	1.3, Chart 3, 1.9, 2.7-2.8, 3.7-3.8, 4.6	11-14, 19-20, 28-29, 33
Gaelic medium education	5.1	6.14, 7.12	55, 68
Gender		1.7, 1.9, 2.1, 2.4-2.6, 2.8, 3.1, 3.4-3.6, 3.8, 3.11, 4.1, 4.3-4.5, 4.7, 6.2, 7.2, 7.11, 8.2	12, 14, 16-20, 25-34, 42, 57, 67, 70
Grant aided schools	6.9, 8.3	5.1-5.2, 5.4-5.6, 6.1-6.11, 6.14, 7.1-7.8, 7.11-7.12, 8.1-8.8	35-36, 38-52, 55-64, 67-78
Independent schools	2.1		
Individualised Education Plan (IEP)	6.12	1.5, Chart 2, 1.6-1.7, Chart 3, 2.5-2.6, 3.5-3.6, 4.3-4.5, 6.8-6.9, 7.5-7.6, 8.5-8.6	11-13, 18-19, 27-28, 32-33, 48-50, 60-62, 74-76
Information & communication technology			
Local authorities		5.1-8.10, Map	35-81
Local authority of residence		5.3, 6.12, 7.9, 8.9	37, 53, 65, 79
Looked after (by local authority) children	6.13	1.4, Chart 3, 5.3, 6.10, 7.7, 8.7	11, 13, 37, 51, 63, 77
Main difficulty of learning		1.7, 2.6, 3.6, 4.5, 6.8, 7.5, 8.5	12, 19, 28, 33, 48-49, 60-61, 74-75
Mainstreaming		1.5, Chart 2, 1.6, 2.5, 3.5, 4.4	11-12, 18, 27, 32
National identity (see also ethnicity)	8.2	1.8, 2.9, 3.9, 4.8	13, 20, 29, 34
Primary schools		1.1, Chart 1, 1.2, 2.1-2.20, 6.1-6.14	10, 16-24, 41-55
Record of needs (RoN)	6.11	1.5, Chart 2, 1.6-1.7, Chart 3, 2.5-2.6, 3.5-3.6, 4.3, 4.5, 6.8-6.9, 7.5-7.6, 8.5-8.6	11-13, 18-19, 27-28, 32-33, 48-50, 60-62, 74-76
Refugees		1.10, 5.4	15, 38
Residential students		4.7	34
Roman Catholic schools		1.11, 2.2, 3.2, 4.2, 6.3, 7.3, 8.3	15-16, 25, 31, 43, 58, 71
Rural schools	6.14	1.3	11
School boards			
School numbers		1.1-1.2, 2.1-2.2, 3.1-3.2, 4.1-4.2, 5.1, 6.1, 6.3, 6.5, 7.1, 7.3, 8.1, 8.3	10, 16, 25, 31, 35, 41, 43, 45, 56, 58, 69, 71
School size		1.2, 2.12	10, 22
Secondary schools		1.1, Chart 1, 1.2, 3.1-3.11, 7.1-7.12	10, 25-30, 56-58
Special schools	6.8, 6.9	1.1-1.2, Chart 1, 4.1-4.8, 8.1-8.10	10, 31-34, 69-80
Stage		2.3-2.4, 2.8, 2.10-2.11, 2.14-2.20, 3.3-3.4, 3.8, 3.10-3.11, 6.4-6.7, 7.4, 7.11	16-17, 20-26, 29-30, 44-47, 59, 67
Staying on rates		3.11, 7.11	30, 67
Urban schools	6.14	1.3	11

## SCOTTISH EXECUTIVE STATISTICAL SERVICES

### Our aim

The aim of the Statistical Service is to provide relevant and reliable statistical information, analysis and advice that meet the needs of government, business and the people of Scotland.

### Our Objectives

#### 1. To ensure that all statistics work is relevant to meeting user needs by

- Improving the range of statistics and analysis we produce for users inside and outside of government (including for key cross cutting policy areas such as the economy, social justice, area regeneration, equality and rural issues)
- Reviewing and where practicable improving timeliness.
- Providing more statistics disaggregated by age, gender, ethnicity and other characteristics.
- Developing more data for small areas through the Neighbourhood Statistics project
- Maintaining comparability of statistics across the UK.

#### 2. To make better use of our statistics by

- Contributing more directly to policy processes inside and where possible outside government. These include community planning, performance information, measurement of government targets, better policy making and modernising government objectives.
- Improving access to and presentation of data and analysis, through better use of the Web, improved publications and improved systems for holding and accessing background data.
- Improving the advice provided on statistics to Ministers and senior management within the Executive.

#### 3. To develop the reliability and integrity of official statistics by

- Assuring and improving quality as an integral part of data collection and analysis and through regular reviews in line with National Statistics quality strategy.
- Developing statistical methods, systems and classifications
- Maintaining and promoting integrity through implementation of the National Statistics Code of Practice and related protocols.

#### 4. To ensure the efficient and effective delivery of statistics products and services by

- Making full use of all sources including administrative sources.
- Minimising the burden on data providers through Survey Monitoring & Advice
- Ensuring value for money.
- Employing staff with the necessary skills and ensuring development of expertise amongst existing staff.
- Ensuring effective use of Information and Communications Technology.
- Managing, promoting and upholding the integrity of the statistics profession.

#### 5. To plan effectively and work together by

- Producing and implementing an annual Scottish Executive Statistics Plan.
- Developing more co-ordinated working arrangements with other analytical services in and out of the Executive.
- Working with the rest of the Government Statistical Service to develop joint approaches/solutions where appropriate.
- Improving the involvement of users and providers, working on a partnership basis wherever possible.

### This is a National Statistics publication

This Statistics Release has been produced to the standards set out in the National Statistics Code of Practice and Release Practice Protocol.

[http://www.statistics.gov.uk/about\\_ns/cop/default.asp](http://www.statistics.gov.uk/about_ns/cop/default.asp)

National Statistics are produced to high professional standards. They undergo regular quality assurance reviews to ensure that they meet customer needs. They are produced free from any political interference.

Details of pre-release access will be provided in the Scottish Executive Statistics Website under 'Forthcoming Releases'.

## Correspondence and enquiries

Enquiries on Pupil Census Statistical Publications should be addressed to:

Mal Cooke  
Information and Analytical Services  
Scottish Executive Education Department  
Room 1-B, Victoria Quay  
Edinburgh, EH6 6QQ  
Telephone: 0131 244 1689; Fax: 0131 244 0354  
e-mail: school.stats@scotland.gsi.gov.uk

General enquiries on Scottish Executive statistics can be addressed to:

Ryan Stewart  
Office of the Chief Statistician  
Scottish Executive  
3 Floor West Rear, St Andrews House  
EDINBURGH EH1 3DG  
Telephone: (0131) 244 0442; Fax: (0131) 244 0335  
e-mail: statistics.enquiries@scotland.gsi.gov.uk

Advice on specific areas of Scottish Executive statistical work can be obtained from staff at the telephone numbers given below:

### Scottish Executive Statistics contacts

Schools – qualifications	(0131) 244 0313
Schools – pupils and teachers	(0131) 244 1689
Further and Higher Education	(0141) 242 0274
The Economy	(0131) 244 2234
Labour market	(0141) 242 5446
Business	(0141) 242 5604
Income, Tax and Benefits	(0131) 244 2583
Local government finance	(0131) 244 7033
Environment, planning & local government staffing	(0131) 244 0445
Equality	(0131) 244 0442
Housing	(0131) 244 7231
Transport	(0131) 244 7255
Health	(0131) 244 3432
Community Care	(0131) 244 3777
Social Justice	(0131) 244 0442
Scottish Executive personnel	(0131) 244 3926
Agricultural census and labour force	(0131) 244 6149
Fisheries	(0131) 244 6441
Courts and law	(0131) 244 2227
Recorded crime and prisons	(0131) 244 2225

### Other contacts for Scottish statistics

Forestry Commission	(0131) 314 6337
The Scottish Funding Councils for Higher and Further Education	(0131) 313 6575
General Register Office for Scotland	
- Vital statistics and publications	(0131) 314 4243
- Population statistics, census statistics or digital boundary products	(0131) 314 4254

For **general enquiries about National Statistics** in the United Kingdom Government contact the National Statistics Public Enquiry Service on **020 7533 5888**

minicom: 01633 812399

Email: info@statistics.gov.uk

Fax: 01633 652747

Letters: room DG/18, 1 Drummond Gate, LONDON SW1V 2QQ

You can also find National Statistics on the internet -

go to **www.statistics.gov.uk**

If you would like to be consulted about new or existing statistical collections or to receive notification of forthcoming statistical publications, please register your statistical interest on the Scottish Executive ScotStat web site at **www.scotland.gov.uk/scotstat**

Current staff names, e-mail addresses and the publications listed below as well as a range of other statistical publications can be found on the Scottish Executive Web site at **www.scotland.gov.uk/stats**.

Further information on the General Register Office for Scotland is available on the website **www.gro-scotland.gov.uk**

## Most recent Information, Analysis and Communication Division's Statistical Publications relating to the Education and Training theme

Title	Last published
Pre-School and Childcare Workforce Statistics 2005	24 <sup>th</sup> February 2006
Exclusions from Schools, 2004/05	31 <sup>st</sup> January 2006
Expenditure on School Education in Scotland, 2006	19 <sup>th</sup> January 2006
Higher Education Graduates and Graduate Destinations 2003/04	7 <sup>th</sup> December 2005
Destination of Leavers from Scottish Schools: 2004/05	7 <sup>th</sup> December 2005
Attendance and Absence in Scottish Schools 2004/05	6 <sup>th</sup> December 2005
Lifelong Learning Statistics, 2005	1 <sup>st</sup> December 2005
Pre-School and Childcare Statistics, 2005	28 <sup>th</sup> July 2005
School Estate Statistics – 2004	28 <sup>th</sup> June 2005
School Meals In Scotland, January 2005	7 <sup>th</sup> June 2005
Students In Higher Education In Scotland 2003-04	11 <sup>th</sup> May 2005
Teachers In Scotland, 2004	26 <sup>th</sup> April 2005

Additional copies of these publications may be purchased from **Scottish Executive Publication Sales, Blackwell's Bookshop, 53 South Bridge, Edinburgh, EH1 1YS**, Telephone: 0131 622 8283, Fax: 0131 622 8258. Cheques should be made payable to 'Blackwell's Bookshop'.

## Complaints and suggestions

If you are not satisfied with our service, please write to the Chief Statistician, Mr Rob Wishart, 4 Floor East Rear, St Andrews House, Edinburgh, EH1 3DG, Telephone: (0131) 244 0302, e-mail rob.wishart@scotland.gov.uk. We also welcome any comments or suggestions that would help us to improve our standards of service.

ISSN 0 143-599X  
ISBN 0-7559-1056-7

Price £2.00

Crown Copyright

Brief extracts from the Crown Copyright material in this publication may be reproduced provided the source is fully acknowledged.