



# Bike Basket

Two color basketweave in mosaic colorwork is easy to knit (only one color at a time!) and sturdy enough to hold stuff safely while biking.

DESIGN BY **Margie Dougherty**

SKILL LEVEL  
Intermediate



## ✦ What you'll need ✦

### YARN

- RED HEART Super Saver,  
7oz/198g skeins each approx  
364yd/333m (100% acrylic)
- ✦ 1 skein #624 Tea Leaf (A)
  - ✦ 1 skein #322 Pale Yellow (B)



### MEDIUM WEIGHT

### KNITTING NEEDLES

- ✦ 1 size 15 (10mm) circular knitting needle, 29"/73.5cm long or any size to obtain correct gauge

### CROCHET HOOK

- ✦ 1 size N-15 (10mm) crochet hook

### NOTIONS

- ✦ 2 buttons, 7/8"/22mm diameter
- ✦ Heavy template plastic or plastic needlepoint canvas
- ✦ 9"/23cm x 12"/30.5cm piece of craft felt
- ✦ Fabric glue
- ✦ Stitch marker
- ✦ Yarn needle

### FINISHED MEASUREMENTS

Top Circumference 29"/73.5cm  
Height 9"/23cm

### GAUGE

11 sts and 17 rows =  
4"/10cm in Mosaic pattern, using 2 strands of yarn held together  
*Remember to check gauge for best results!*

### NOTES

Basket Base is worked back and forth in rows. Stitches are picked up around Base and Sides are worked in the round. Hold 2 strands of yarn together throughout. Use the Mosaic method of knitting, working 2 rows with 1 color while slipping stitches of opposite color. Pick up new yarn from under old at beginning of round to twist yarns and prevent holes. Slip stitches of non-working color purlwise while carrying working color along wrong side of work. Squares along right edge of Chart designate working color.

### STITCH PATTERN

#### Mosaic Pattern

(Multiple of 10 sts)

**Rounds 1, 5, and 9** ✦ (RS)  
With B, [slip 1 wyib, k1] twice, slip 1 wyib, k5.

**Rounds 2, 6, and 10** ✦ With B, [slip 1 wyib, p1] twice, slip 1 wyib, k5.

**Rounds 3 and 7** ✦ With A, k5, [slip 1 wyib, k1] twice, slip 1 wyib.

**Rounds 4 and 8** ✦ With A, k5, [slip 1 wyib, p1] twice, slip 1 wyib.

**Rounds 11-12** ✦ With A, knit.

**Rounds 13, 17, and 21** ✦ With B, k5, [slip 1 wyib, k1] twice, slip 1 wyib.

**Rounds 14, 18, and 22** ✦ With B, k5, [slip 1 wyib,

p1] twice, slip 1 wyib.

**Rounds 15 and 19** ✦ With A, [slip 1 wyib, k1] twice, slip 1 wyib, k5.

**Rounds 16 and 20** ✦ With A, [slip 1 wyib, p1] twice, slip 1 wyib, k5.

**Rounds 23-24** ✦ With A, knit.

Repeat Rounds 1-24 for Mosaic Pattern.

### BASKET

#### Base

Holding 2 strands of A together, cast on 26 sts. Work in Garter st for 28 rows. Do not cut yarn.

#### Sides

**Joining Round** ✦ K26, turn to work along side edge of Bottom, pick up 14 sts along side edge, turn to work along cast-on edge, pick up 26 sts along cast-on row, turn to work along opposite side edge, pick up 14 sts along opposite side edge—80 sts. Join to work in rounds. Place marker for beginning of round.

Purl 1 round, knit 1 round.

**Round 1** ✦ Join 2 strands of B and beginning with Round 1, repeat 10 sts of Mosaic Pattern 8 times around.

Work Rounds 1-24 of Mosaic Pattern once, then Rounds 1-12 once.

Cut B and with 2 strands of A, purl 1 round. Bind off.

### FINISHING

#### Button Bands (Make 2)

Measure and mark for placement for 2 Button Bands on Back of Bike Basket approximately 6.5"/16.5cm apart.

With right side facing and 2 strands of A held together, pick up 5 sts along bind-off row where marked for one Button Band.

Work in Garter st for 16 rows.

**Buttonhole Row** + K3, yo, k2tog, k1.

Bind off.

Repeat for Second Button Band.

Sew buttons to Basket opposite buttonholes.

With crochet hook and 2 strands of A held together, work 1 sc in each bound-off st around top

edge of Basket. Fasten off.

### TIE

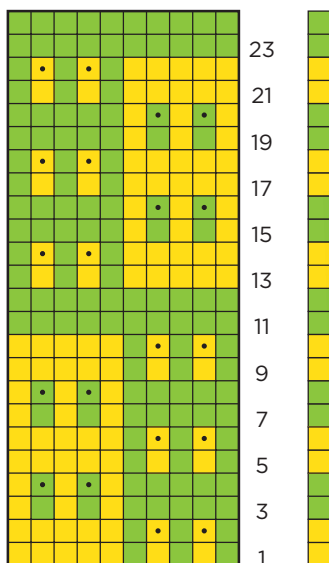
With crochet hook and 2 strands of A held together, make a chain 28"/71cm long. Thread chain through top edge of Basket.

Weave in ends.

### FINISHING

Cut a piece of plastic or plastic canvas to fit inside Base of Basket. Cover plastic with felt, trimming excess and glue together. Slip into Base of Basket to reinforce. ✂

### Mosaic Chart



± - - 10 Stitches - - ±

### STITCH KEY

- = A
- = B
- = P on RS, k on WS

Note: Squares along right edge of chart designate working color. Slip sts of non-working color purlwise while carrying working color along WS of work.

FREE PATTERN FROM

inspire.create.share.  
**Knitting**  
today!



"Bike Basket" featured in *Knitting Today!* June/July 2011

Subscribe today at [knittingtodaymag.com](http://knittingtodaymag.com) and save 57% off the cover price!

Bright flower buttons securely attach the basket to your bike's handlebars.

