

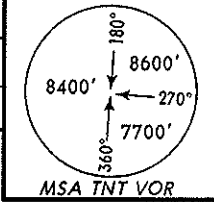
**MHTG/TGU**  
**TONCONTIN INTL**

**JEPPESEN**  
 16 MAY 08 **19-01**

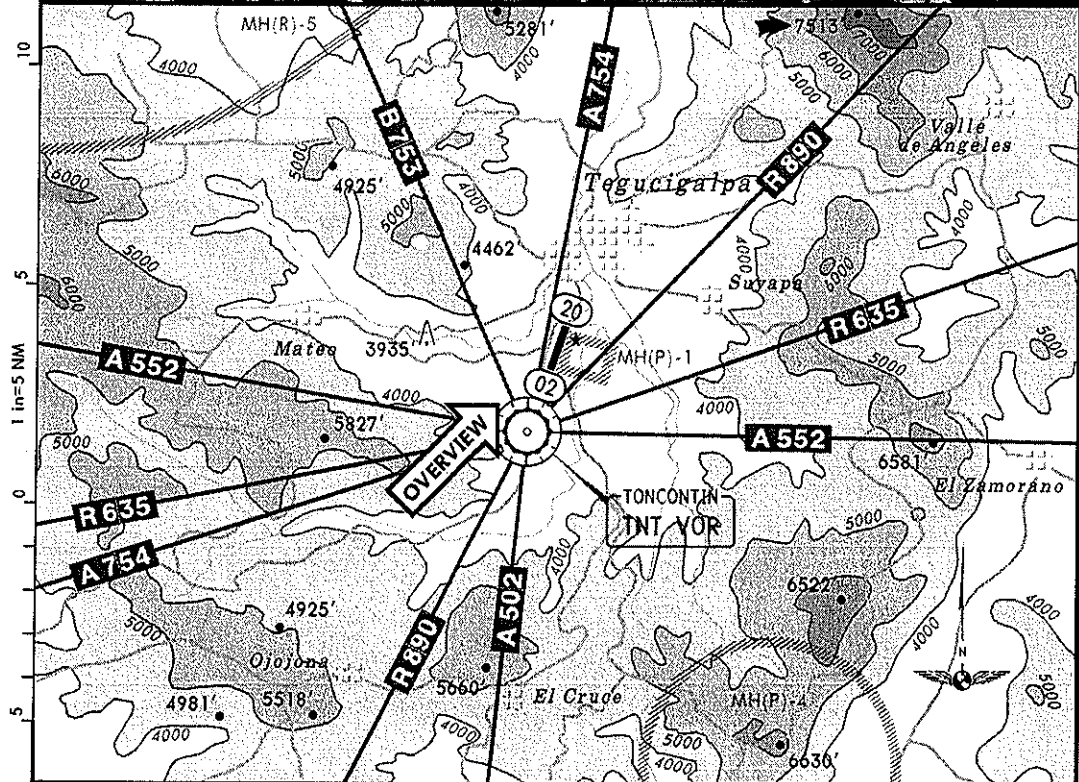
**AIRPORT QUALIFICATION**  
**TEGUCIGALPA, HONDURAS**

1. Airport Qualification: Mountainous Terrain
2. CAUTION: High Terrain in All Quadrants
3. Prohibited Area in the Immediate Vicinity

*Apt Elev 3297'*  
 1 NM South Tegucigalpa  
 N14 03.6 W087 13.0



**OVERVIEW**



CHANGES: Reissued.

© JEPPESEN, 1994, 2008. ALL RIGHTS RESERVED.

MHTG/TGU  
TONCONTIN INTL

JEPPESEN  
16 MAY 08 (19-02)

AIRPORT QUALIFICATION  
TEGUCIGALPA, HONDURAS

Public	Longest Rwy (LDA): Rwy 20 - 6109' (1862m)		Time Conv (Std): UTC -6	
<b>OVERVIEW</b>				
<p>Toncontin International Airport is located in south central Honduras in a small mountain valley and is surrounded by high terrain. The airport is near the Couluteca River and the mountains defining the valley are mostly volcanic in origin. Lower terrain is to the north along the narrow floor while the peaks on both sides of the valley commonly rise between 5000 and 7500 feet MSL. To the east, terrain rises to 6581 feet MSL within 9 NM. To the west, terrain rises to 5827 feet MSL within 5 NM. The Pacific Ocean is about 50 NM to the south while the Caribbean coastline is about 100 NM to the north.</p> <p>There are no straight-in instrument approach procedures for this airport.</p> <p>Circling to land is not authorized east of the runway.</p> <p>Prohibited Area MH(P)-1 is adjacent to the runway, all traffic should remain west of the runway to avoid this area.</p> <p>The higher landing minimums and special missed approach procedures are designed to allow for clearance of high terrain near the airport.</p>				
<b>WEATHER</b>				
Seasonal data represents average monthly values				
<b>Remarks:</b>				
Obstruction to visibility, mostly due to smoke/haze, averages 27 days per month. Dust/sand obstructions is reported an average of 12 days per month. Broken ceilings are the predominant sky conditions from April through January.				
	<b>Dec-Feb</b>	<b>Mar-May</b>	<b>Jun-Aug</b>	<b>Sep-Nov</b>
<b>① Precip Amount</b>	7.6 mm 0.3 in	64 mm 2.5 in	109 mm 4.3 in	119 mm 4.7 in
<b>Other Precip</b>		7 days Thunderstorms	9 days Thunderstorms	6 days Thunderstorms
<b>IMC</b>	2%	11%	4%	5%
<b>Prevailing Winds</b>	N-9 kts	N-8 kts	N-7 kts	N-8 kts
<b>Low Temp</b>	16°C 60°F	18°C 64°F	18°C 65°F	18°C 64°F
<b>High Temp</b>	26°C 78°F	29°C 85°F	28°C 82°F	27°C 80°F
<b>① Annual precipitation totals 886 mm (34.9 in).</b>				

CHANGES: None.

© JEPPESEN, 1994, 2008. ALL RIGHTS RESERVED.

MHTG/TGU  
TONCONTIN INTL

JEPPESEN  
16 MAY 08 (19-03)

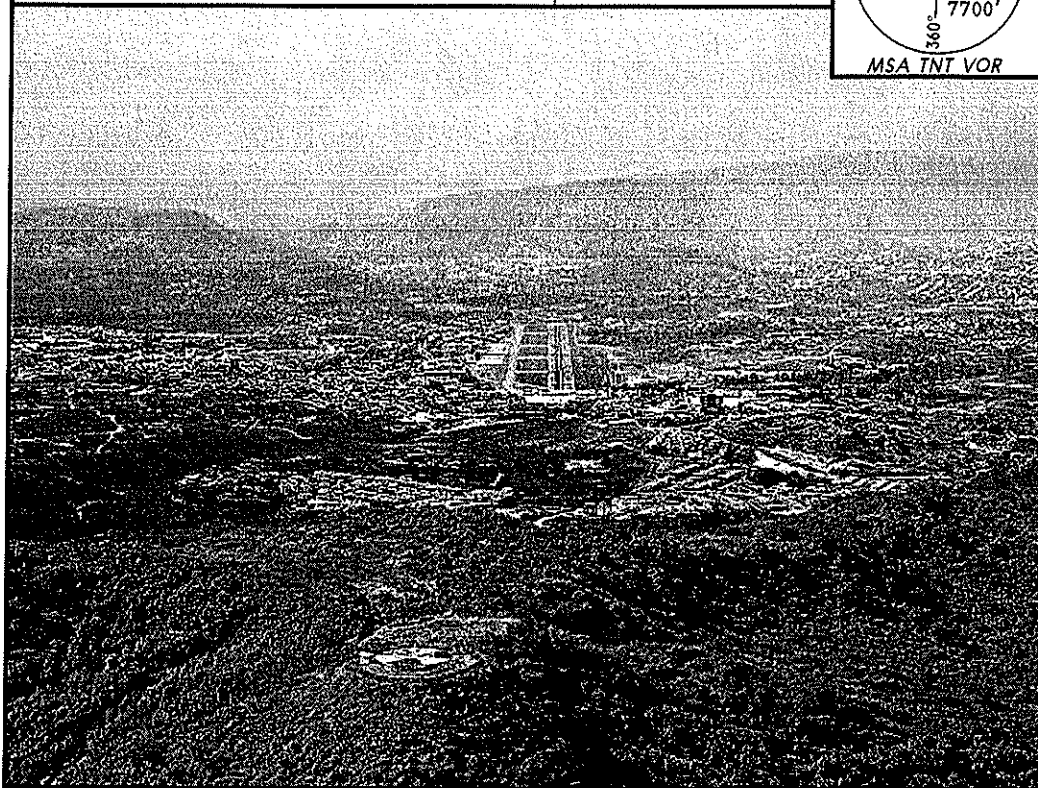
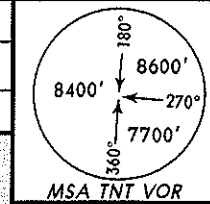
AIRPORT QUALIFICATION  
TEGUCIGALPA, HONDURAS  
Rwy 02

1. Airport Qualification: Mountainous Terrain
2. CAUTION: High Terrain in All Quadrants
3. Prohibited Area in the Immediate Vicinity

Apt Elev 3297'

1 NM South Tegucigalpa

N14 03.6 W087 13.0



## RUNWAY 02

Caution: During the rainy season the touchdown zone of this runway is extremely slippery when wet.

Visual vertical guidance is provided by PAPI (5.3°). Guidance is for Category A and B aircraft only.

High terrain prior to the threshold and the runway downslope, may create a visual illusion of being low on approach.

High terrain elevation during visual approach may cause Ground Proximity Warning System activation.

This runway has a displaced threshold resulting in a usable landing length of 5410 feet (1649m).

Rejected landings, missed approach, and engine inoperative procedures may require special attention due to high climb gradients required for obstacle clearance. Check to see if your company provides special procedures for this runway.

MHTG/TGU  
TONCONTIN INTL

JEPPESEN  
16 MAY 08 (19-04)

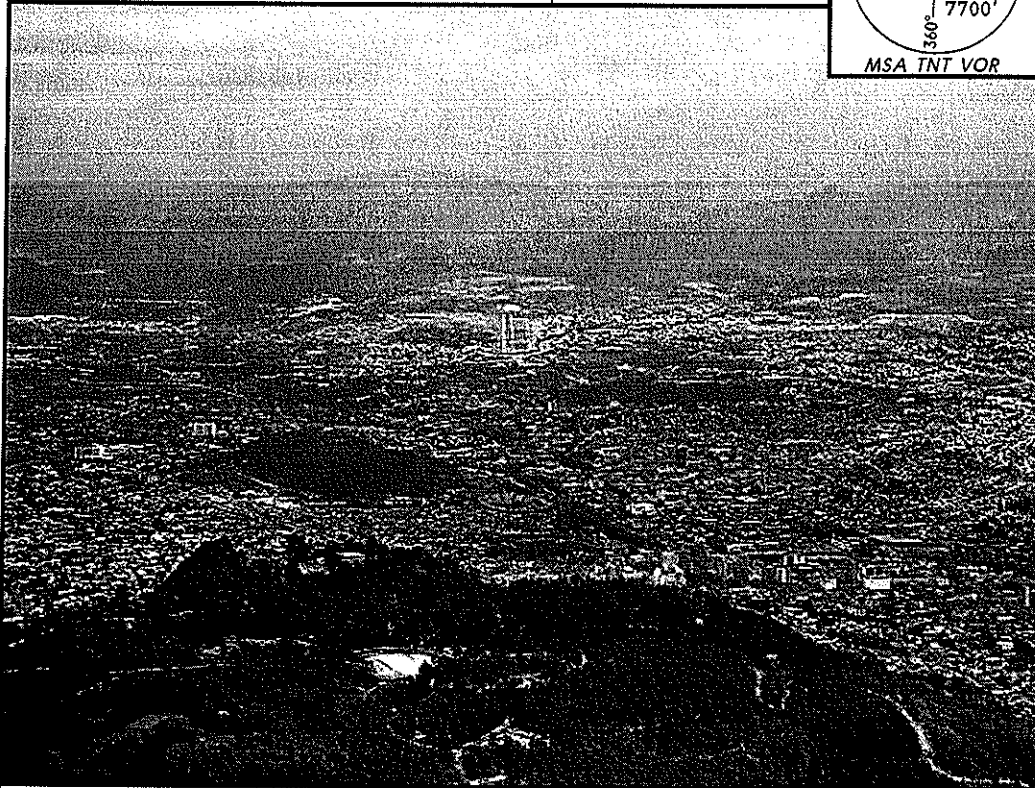
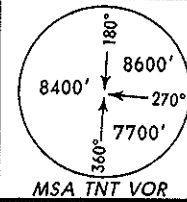
AIRPORT QUALIFICATION  
TEGUCIGALPA, HONDURAS  
Rwy 20

1. Airport Qualification: Mountainous Terrain
2. CAUTION: High Terrain in All Quadrants
3. Prohibited Area in the Immediate Vicinity

Apt Elev 3297'

1 NM South Tegucigalpa

N14 03.6 W087 13.0



### RUNWAY 20

Caution: During the rainy season the touchdown zone of this runway is extremely slippery when wet.

This runway uses a right-hand traffic pattern.

Visual vertical guidance is provided by PAPI (5.0°).

Rejected landings, missed approach, and engine inoperative procedures may require special attention due to high climb gradients required for obstacle clearance. Check to see if your company provides special procedures for this runway.

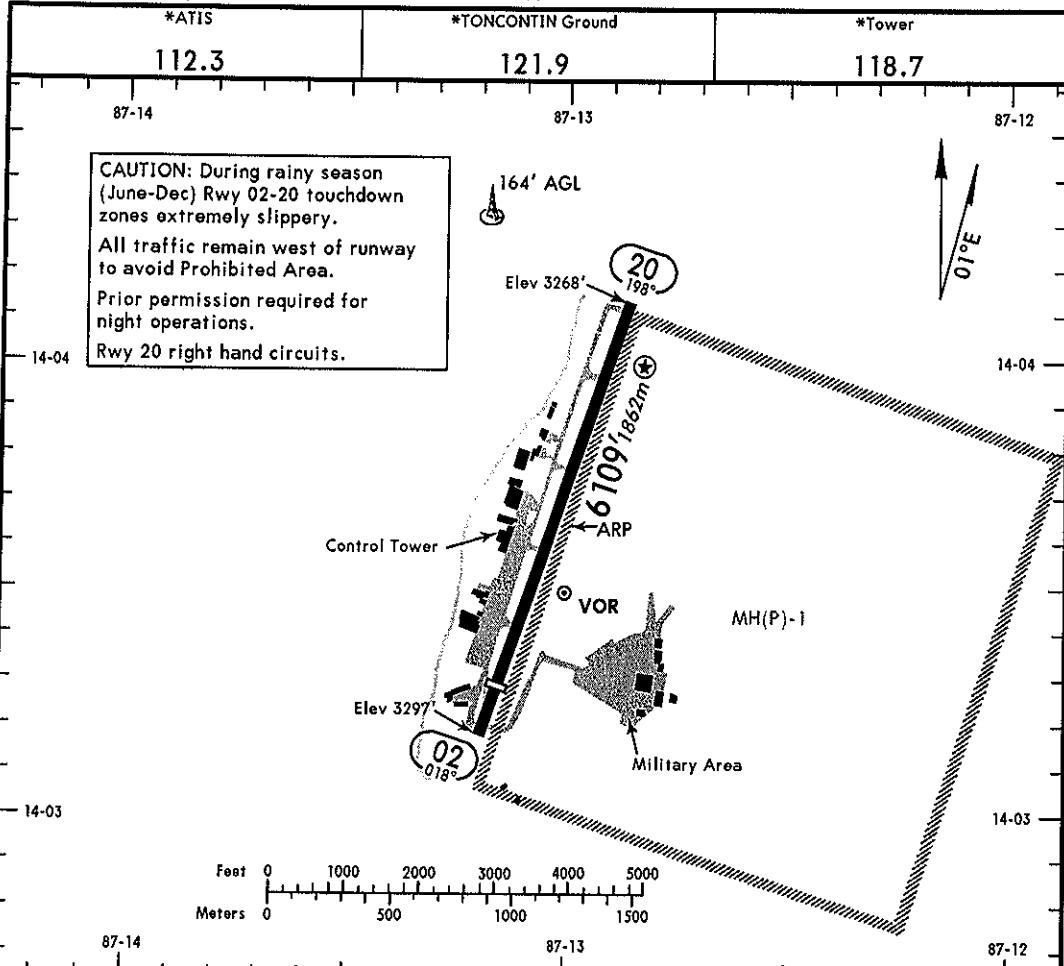
# MHTG/TGU

Apt Elev 3297'  
 N14 03.6 W087 13.0

# JEPPESEN TEGUCIGALPA, HONDURAS

4 MAY 07 **13-1** Eff 10 May

TONCONTIN INTL



**CAUTION:** During rainy season (June-Dec) Rwy 02-20 touchdown zones extremely slippery.  
 All traffic remain west of runway to avoid Prohibited Area.  
 Prior permission required for night operations.  
 Rwy 20 right hand circuits.

### ADDITIONAL RUNWAY INFORMATION

RWY		USABLE LENGTHS LANDING BEYOND		TAKE-OFF	WIDTH
		Threshold	Glide Slope		
02	RL REIL <b>①</b> PAPI-R (angle 5.3°)	5410'	1649m		148'
20	RL REIL PAPI-R (angle 5.0°)				45m

**①** Cat A, B only.

	TAKE-OFF	FOR FILING AS ALTERNATE	
	All Rwys		
1 & 2 Eng	1200' - 2800m	A	2
3 & 4 Eng		B	3
		C	
		D	

CHANGES: None.