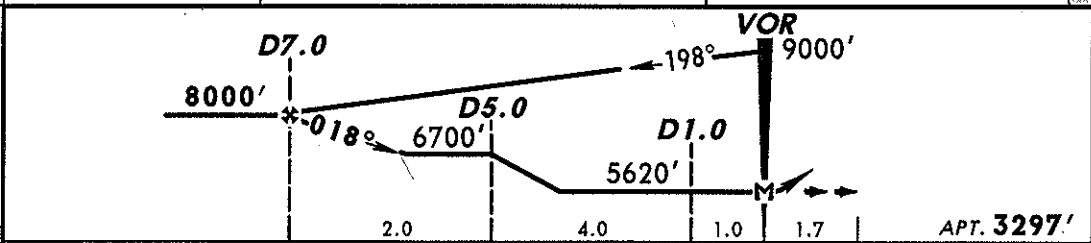
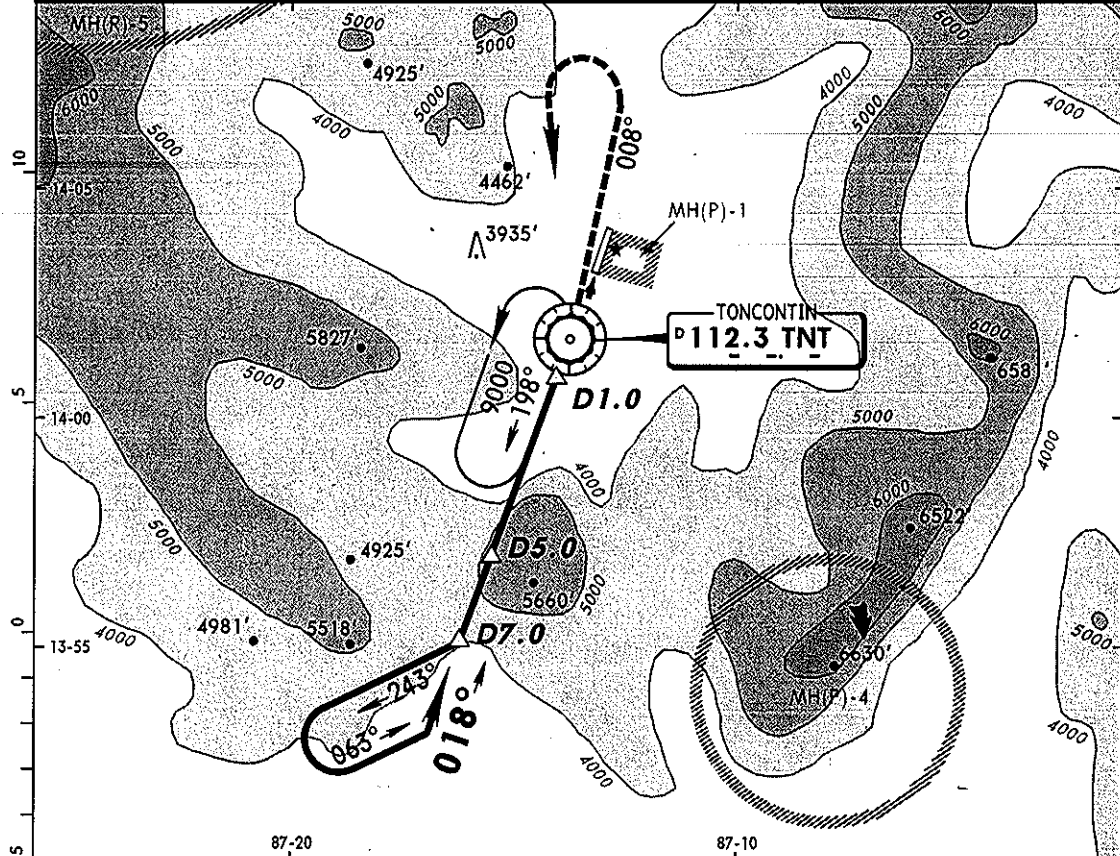
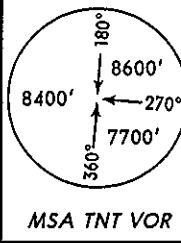


MHTG/TGU
TONCONTIN INTL

JEPPESEN TEGUCIGALPA, HONDURAS
4 MAY 07 (13-1) Eff 10 May VOR DME Rwy 02

*ATIS 112.3	*TONCONTIN Approach 119.1	*CENAMER Center 126.9 when App inop.	*TONCONTIN Tower 118.7	*Ground 121.9
VOR TNT 112.3	Final Apch Crs 018°	Minimum Alt D7.0 8000' (4703')	MDA(H) Refer to Minimums	Apt Elev 3297'
<p>MISSED APCH: Climb outbound on TNT VOR R-008 to 6500' within 6.5 NM, then turn LEFT climbing to a minimum of 9000'. Then return to TNT VOR. Call ATC for instructions.</p> <p>Alt Set: hPa Apt Elev: 115 hPa Trans level: By ATC Trans alt: 19500'</p> <p>1. CAUTION: High terrain all quadrants. 2. Do not exceed distance or altitude limits in the procedure or holding.</p>				



Gnd speed-Kts	70	90	100	120	140	160	REIL PAPI-R	6500' TNT on 112.3 within R-008	6.5 NM
Rate of descent on final (feet/min)	397	510	567	680	793	907			
MAP at VOR									
D7.0 to MAP	7.0	6:00	4:40	4:12	3:30	3:00	2:38		

STRAIGHT-IN LANDING		CIRCLE-TO-LAND (Terps)	
NA		Not Authorized East of Rwy MDA(H)	
A		Max Kts	90
B			5620' (2323') -2
C			5620' (2323') -3
D			

PANS OPS

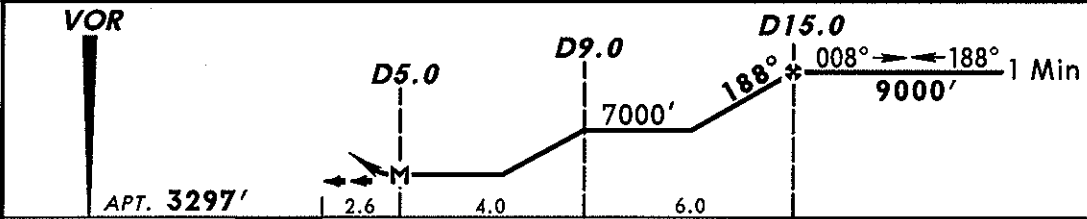
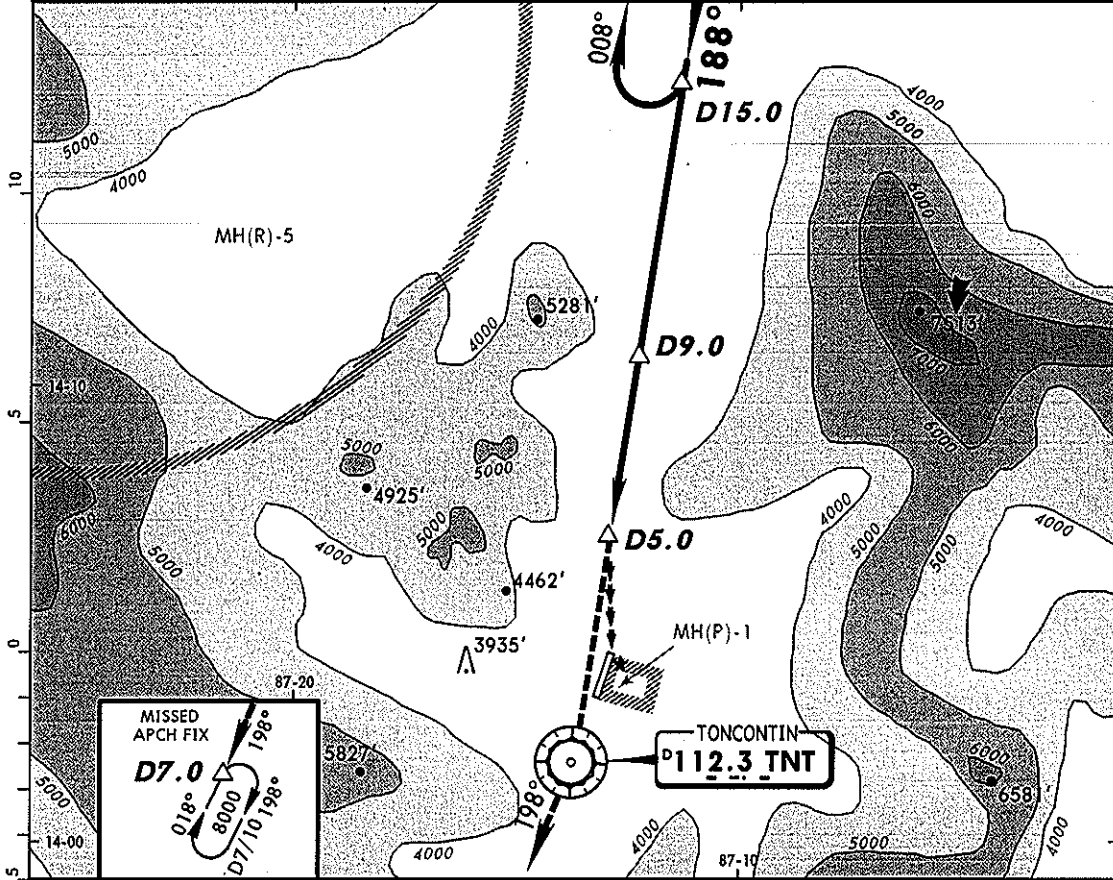
CHANGES: NDB deleted.

© JEPPESEN SANDERSON, INC., 1999, 2007. ALL RIGHTS RESERVED.

MHTG/TGU
TONCONTIN INTL

JEPPESEN TEGUCIGALPA, HONDURAS
18 MAY 07 (13-2)
VOR DME Rwy 20

*ATIS 112.3	*TONCONTIN Approach 119.1	*CENAMER Center 126.9 when App inop.	*TONCONTIN Tower 118.7	*Ground 121.9
VOR TNT 112.3	Final Apch Crs 188°	Minimum Alt D15.0 9000' (5703')	MDA(H) Refer to Minimums	Apt Elev 3297'
MISSED APCH: Climb direct TNT VOR, then continue climb outbound on TNT VOR R-198 to 8000', enter holding pattern. Call APPROACH for instructions.				<p>MSA TNT VOR</p>
Alt Set: hPa Apt Elev: 115 hPa Trans level: By ATC Trans alt: 19500' 1. CAUTION: High terrain all quadrants. 2. Do not exceed the distance limits in the procedure or holding.				



				REIL	↑	→	TNT
				PAPI-R			112.3
MAP at D5.0							

PANS OPS	CIRCLE-TO-LAND (Terps)	
	Not Authorized East of Rwy	
	Max Kts	MDA(H)
	A 90	6000' (2703')-2
B 120		
C 140	6000' (2703')-3	
D 165		

CHANGES: Reverse side VOR Rwy 02 cancelled.

© JEPPESEN SANDERSON, INC., 1999, 2007. ALL RIGHTS RESERVED.

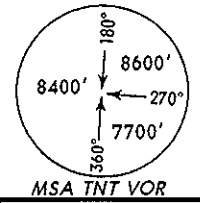
MHTG/TGU
TONCONTIN INTL

JEPPESSEN
 16 MAY 08 **(19-01)**

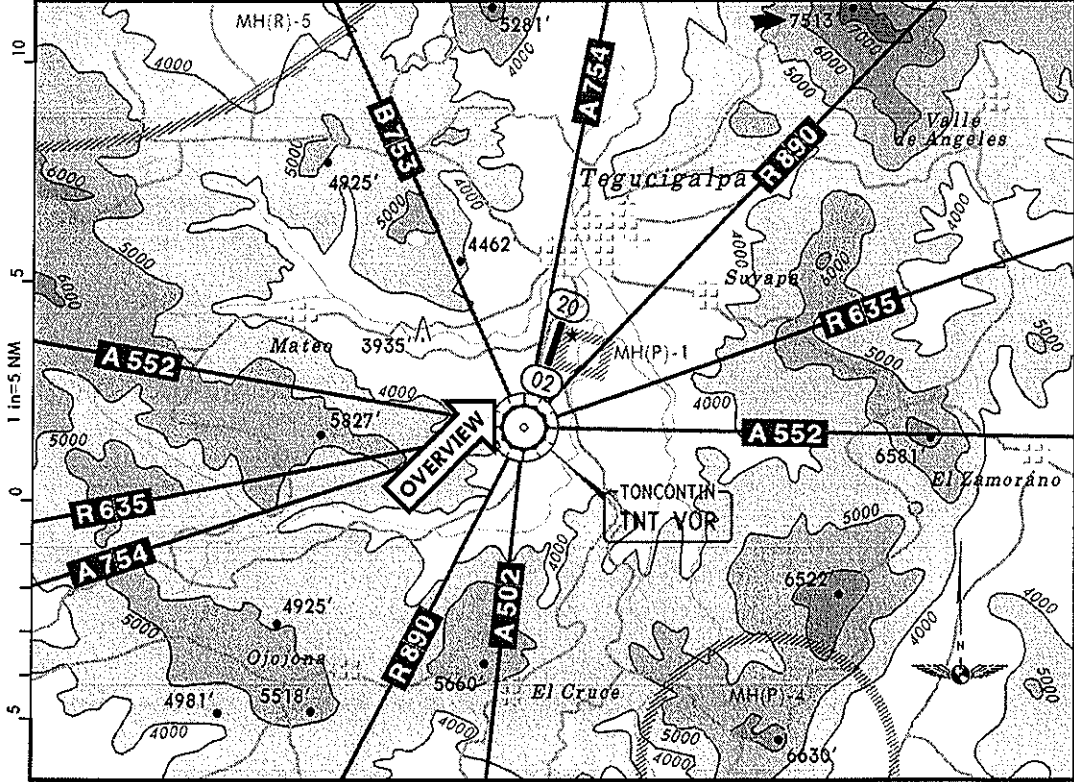
AIRPORT QUALIFICATION
TEGUCIGALPA, HONDURAS

1. Airport Qualification: Mountainous Terrain
2. CAUTION: High Terrain in All Quadrants
3. Prohibited Area in the Immediate Vicinity

Apt Elev 3297'
 1 NM South Tegucigalpa
 N14 03.6 W087 13.0



OVERVIEW



CHANGES: Reissued.

© JEPPESSEN, 1994, 2008. ALL RIGHTS RESERVED.

MHTG/TGU
TONCONTIN INTL

JEPPESEN
16 MAY 08 19-02

AIRPORT QUALIFICATION
TEGUCIGALPA, HONDURAS

Public	Longest Rwy (LDA): Rwy 20 - 6109' (1862m)		Time Conv (Std): UTC -6	
OVERVIEW				
<p>Toncontin International Airport is located in south central Honduras in a small mountain valley and is surrounded by high terrain. The airport is near the Couluteca River and the mountains defining the valley are mostly volcanic in origin. Lower terrain is to the north along the narrow floor while the peaks on both sides of the valley commonly rise between 5000 and 7500 feet MSL. To the east, terrain rises to 6581 feet MSL within 9 NM. To the west, terrain rises to 5827 feet MSL within 5 NM. The Pacific Ocean is about 50 NM to the south while the Caribbean coastline is about 100 NM to the north.</p> <p>There are no straight-in instrument approach procedures for this airport.</p> <p>Circling to land is not authorized east of the runway.</p> <p>Prohibited Area MH(P)-1 is adjacent to the runway, all traffic should remain west of the runway to avoid this area.</p> <p>The higher landing minimums and special missed approach procedures are designed to allow for clearance of high terrain near the airport.</p>				
WEATHER				
Seasonal data represents average monthly values				
Remarks:				
Obstruction to visibility, mostly due to smoke/haze, averages 27 days per month. Dust/sand obstructions is reported an average of 12 days per month. Broken ceilings are the predominant sky conditions from April through January.				
	Dec-Feb	Mar-May	Jun-Aug	Sep-Nov
① Precip Amount	7.6 mm 0.3 in	64 mm 2.5 in	109 mm 4.3 in	119 mm 4.7 in
Other Precip		7 days Thunderstorms	9 days Thunderstorms	6 days Thunderstorms
IMC	2%	11%	4%	5%
Prevailing Winds	N-9 kts	N-8 kts	N-7 kts	N-8 kts
Low Temp	16°C 60°F	18°C 64°F	18°C 65°F	18°C 64°F
High Temp	26°C 78°F	29°C 85°F	28°C 82°F	27°C 80°F
① Annual precipitation totals 886 mm (34.9 in).				

CHANGES: None.

© JEPPESEN, 1994, 2008. ALL RIGHTS RESERVED.

MHTG/TGU
TONCONTIN INTL

JEPPESEN
16 MAY 08 (19-03)

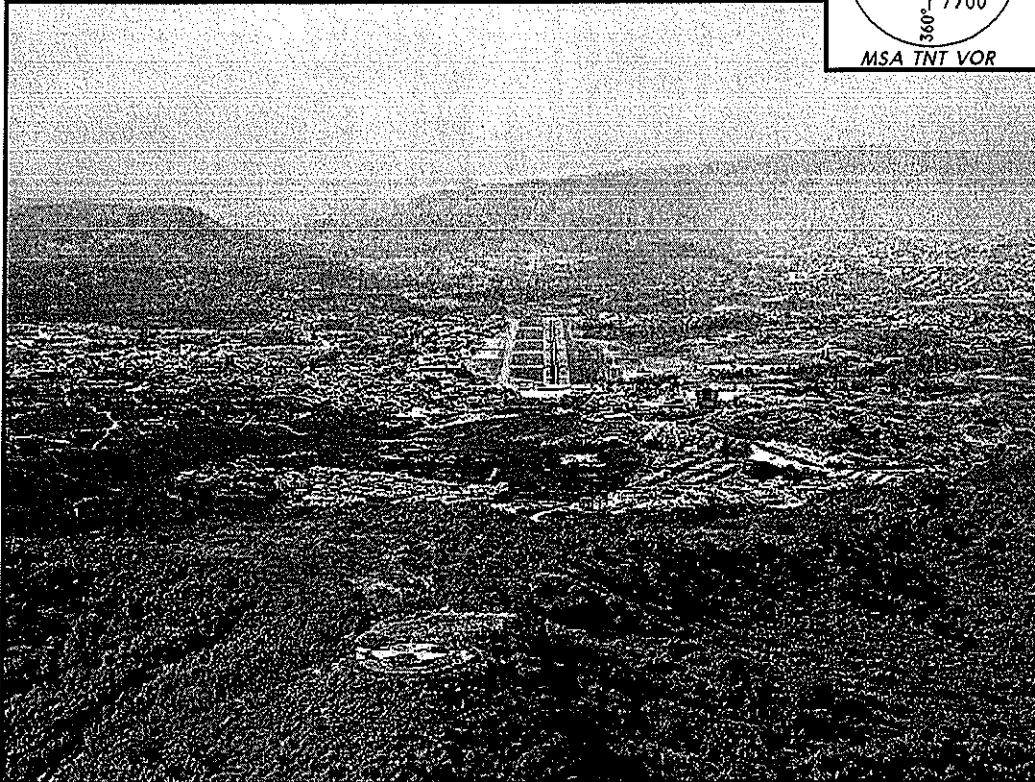
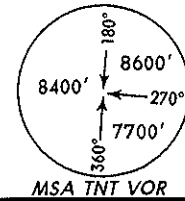
AIRPORT QUALIFICATION
TEGUCIGALPA, HONDURAS
Rwy 02

1. Airport Qualification: Mountainous Terrain
2. CAUTION: High Terrain in All Quadrants
3. Prohibited Area in the Immediate Vicinity

Apt Elev 3297'

1 NM South Tegucigalpa

N14 03.6 W087 13.0



RUNWAY 02

Caution: During the rainy season the touchdown zone of this runway is extremely slippery when wet.

Visual vertical guidance is provided by PAPI (5.3°). Guidance is for Category A and B aircraft only.

High terrain prior to the threshold and the runway downslope, may create a visual illusion of being low on approach.

High terrain elevation during visual approach may cause Ground Proximity Warning System activation.

This runway has a displaced threshold resulting in a usable landing length of 5410 feet (1649m).

Rejected landings, missed approach, and engine inoperative procedures may require special attention due to high climb gradients required for obstacle clearance. Check to see if your company provides special procedures for this runway.

MHTG/TGU
TONCONTIN INTL

JEPPESEN
16 MAY 08 19-04

AIRPORT QUALIFICATION
TEGUCIGALPA, HONDURAS
Rwy 20

1. Airport Qualification: Mountainous Terrain 2. CAUTION: High Terrain in All Quadrants 3. Prohibited Area in the Immediate Vicinity	Apt Elev 3297'	<p>MSA TNT VOR</p>
	1 NM South Tegucigalpa	
	N14 03.6 W087 13.0	

RUNWAY 20

Caution: During the rainy season the touchdown zone of this runway is extremely slippery when wet.

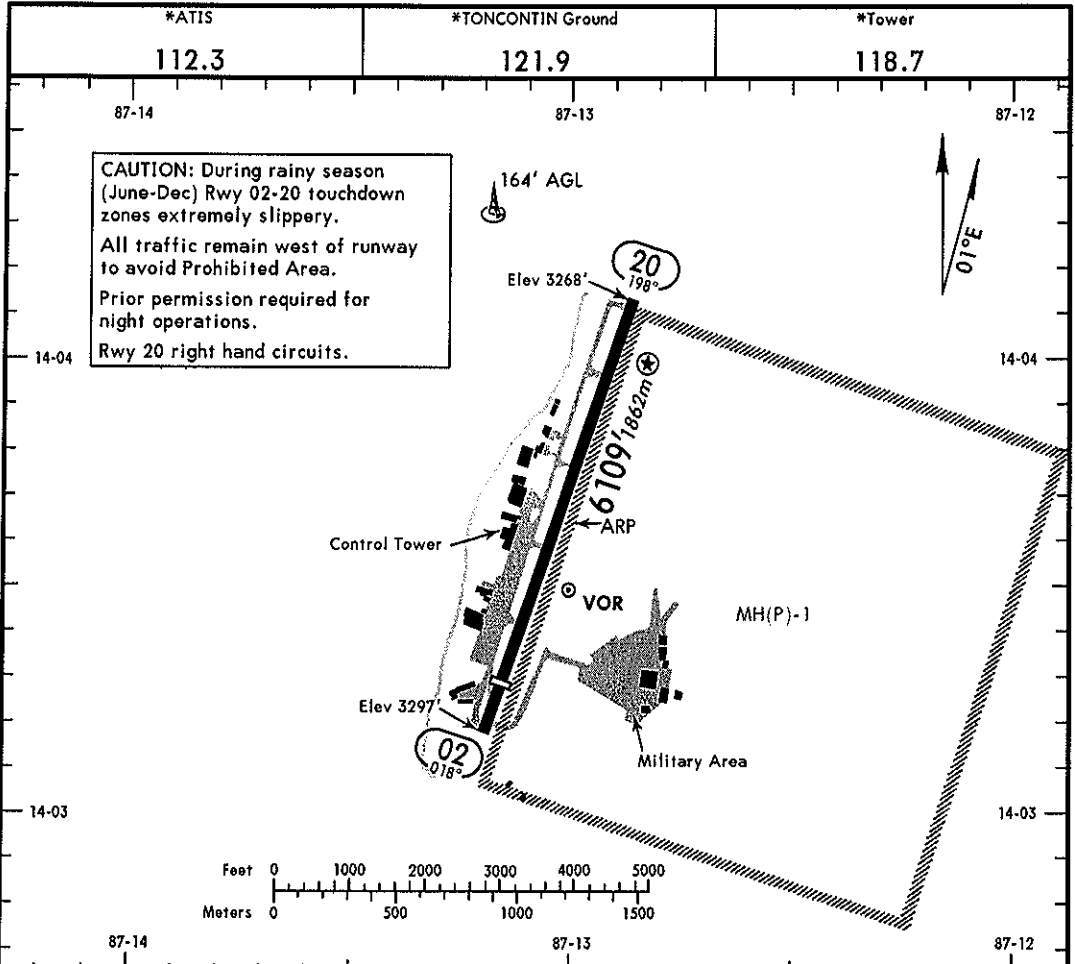
This runway uses a right-hand traffic pattern.

Visual vertical guidance is provided by PAPI (5.0°).

Rejected landings, missed approach, and engine inoperative procedures may require special attention due to high climb gradients required for obstacle clearance. Check to see if your company provides special procedures for this runway.

MHTG/TGU
 Apt Elev 3297'
 N14 03.6 W087 13.0

JEPPESEN TEGUCIGALPA, HONDURAS
 4 MAY 07 (13-1) Eff 10 May
 TONCONTIN INTL



RWY		ADDITIONAL RUNWAY INFORMATION				
			USABLE LENGTHS		TAKE-OFF	WIDTH
			Threshold	Landing Beyond		
02	RL REIL PAPI-R (angle 5.3°)	5410' 1649m			148'	
20	RL REIL PAPI-R (angle 5.0°)				45m	

① Cat A, B only.

TAKE-OFF		FOR FILING AS ALTERNATE	
All Rwys		VOR Rwy 02 VOR DME Rwy 02 VOR DME Rwy 20	
1 & 2 Eng	1200' - 2800m	A	2
3 & 4 Eng		B	3
		C	3
		D	