

Tulkarm Governorate

The Wall construction in the Tulkarm area is largely complete and stretches for 41 kilometres from north to south through the Governorate.

Tulkarm City

For Tulkarm City area, economic life for its 63,000 population has stemmed from its position as a key trading town across the Green Line with Israel and its easy access for its workforce to Israel's labour market. The city is also an important service town for the rich agricultural areas surrounding it.

The Wall is a 6-8 metre concrete barrier running for 11 kms on the west side of Tulkarm City. It has completely isolated the Tulkarm population from Israel and its former economic activities.

Should the planned depth barrier be completed on the east side of the city, (construction has already started) the town will be surrounded by barriers on all sides.

Isolated Palestinian villages - North (see box 1)

The Wall has created two enclaves in the Tulkarm Governorate where Palestinian villages are wedged between the Green Line and the Wall.

The enclave to the north encircles a number of populous villages, Baqa ash-Sharqiya (pop. 3,869), Nazlat 'Isa (pop. 2,366) and Nazlat Abu Nar (pop. 185).

A number of towns and villages have also been separated from their land by the route of the Wall. A quarter of Deir al-Ghusun's (pop. 8,942), land for example, will be isolated to the west of the Wall. The town of 'Attil (pop. 9,831) will be similarly affected and Zeita (pop. 2,971) is isolated from 700 acres (2,800 dunums) and has had 107 acres (430 dunums) destroyed by the Wall's path.²⁸

Isolated Palestinian Villages - South (see box 2)

South of Tulkarm, the route of the Wall severs the village of Khirbet Jubara (pop. 309) from the greater Tulkarm area. The village is now in an enclave of its own.

Other towns and villages have been separated from their lands. In Kafr Jammal (pop. 2,415), around 550 acres of the village's 3,000 acres are isolated between the Wall and the Green Line.²⁹ And, in Ar Ras (pop. 449) residents will be separated from 88 percent of their 2,250 acres (9000 dunums).³⁰

Israeli Settlements

The southern enclave appears to have been created to incorporate the only Israeli settlement in this area - Sal'it (pop. 385). In the northern Tulkarm enclave, where there are no Israeli settlements, the reason for the Wall's intrusion into the West Bank is less apparent.

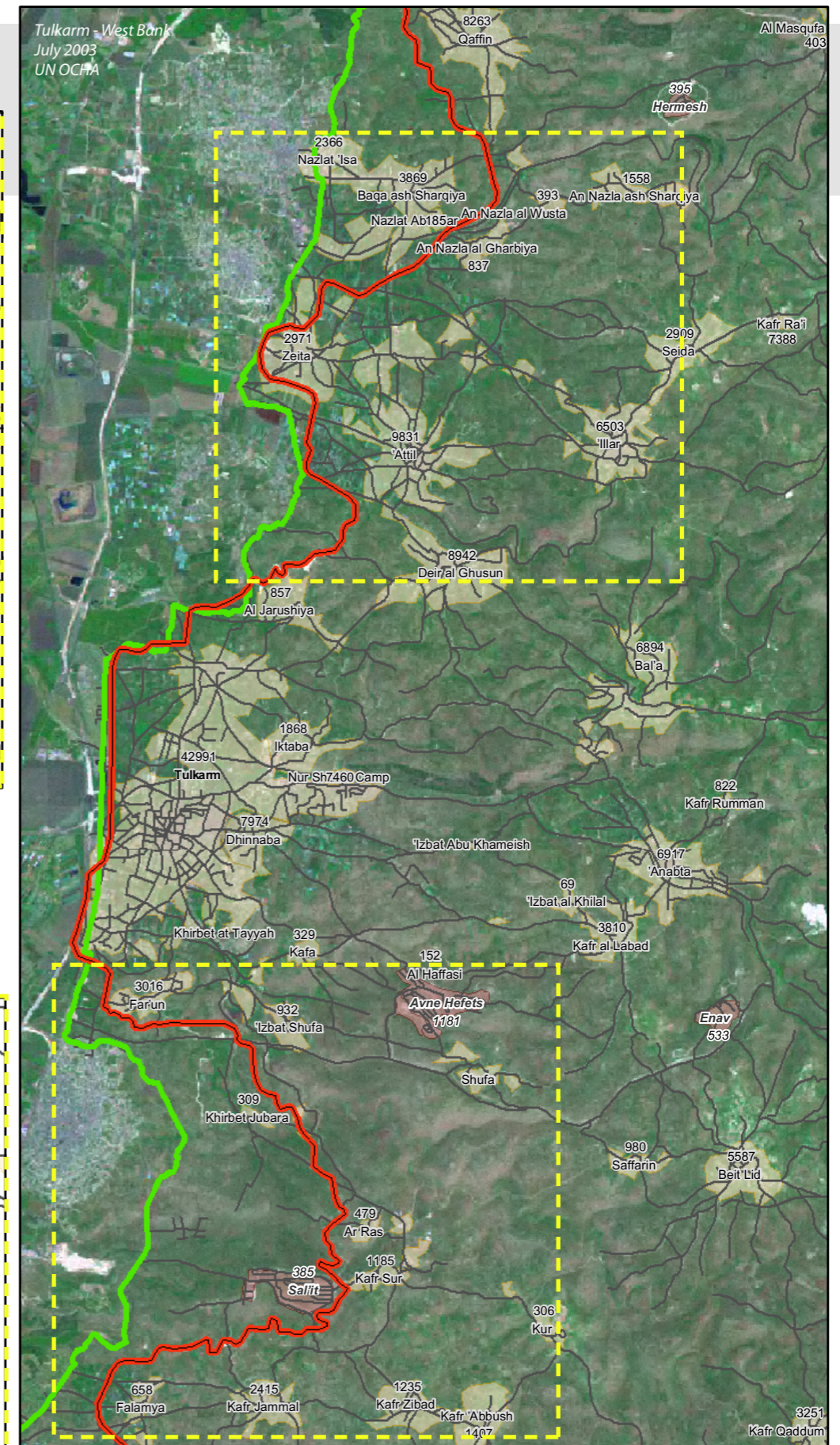
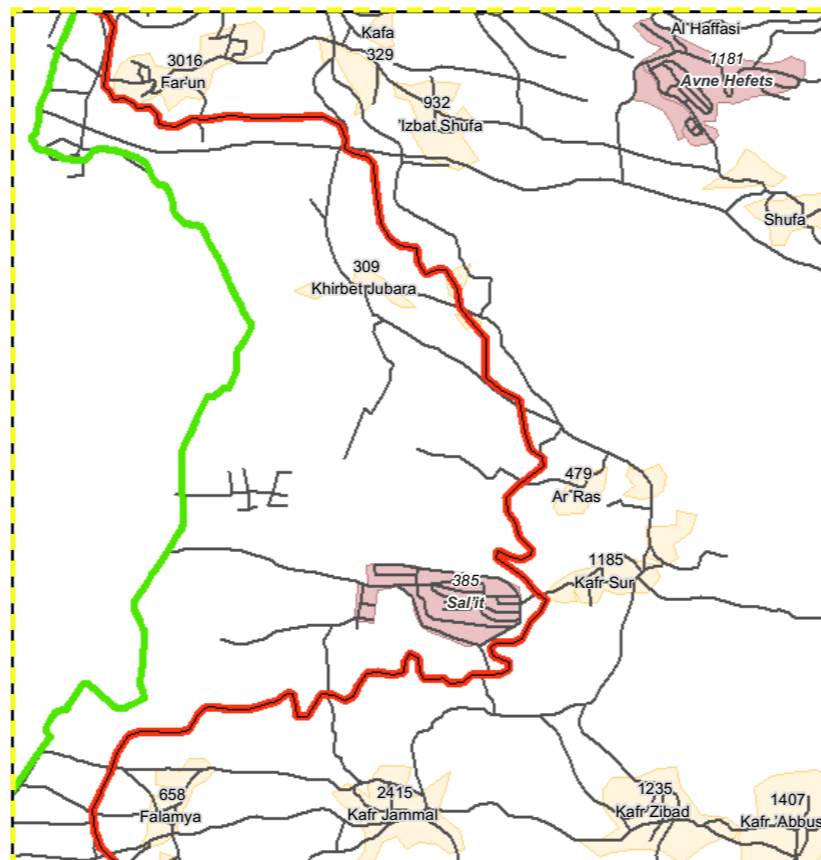
Box 1



Estimated Population in North Tulkarm Enclave
Palestinians - 6,420
Settlers - 0

Estimated Population in South Tulkarm Enclave
Palestinians - 309
Settlers - 385

Box 2



- Wall (being finalised or complete)
- West Bank boundary/Green Line (estimate)
- Road network
- Palestinian Locality, numbers indicate latest population estimates
- Israeli Settlement, numbers indicate latest population estimates

Note: Wall trajectory based on satellite image analysis and field visits.

28 - "Stop the Wall in Palestine" PENGON July 2003, p23
29 - Ibid
30 - Ibid