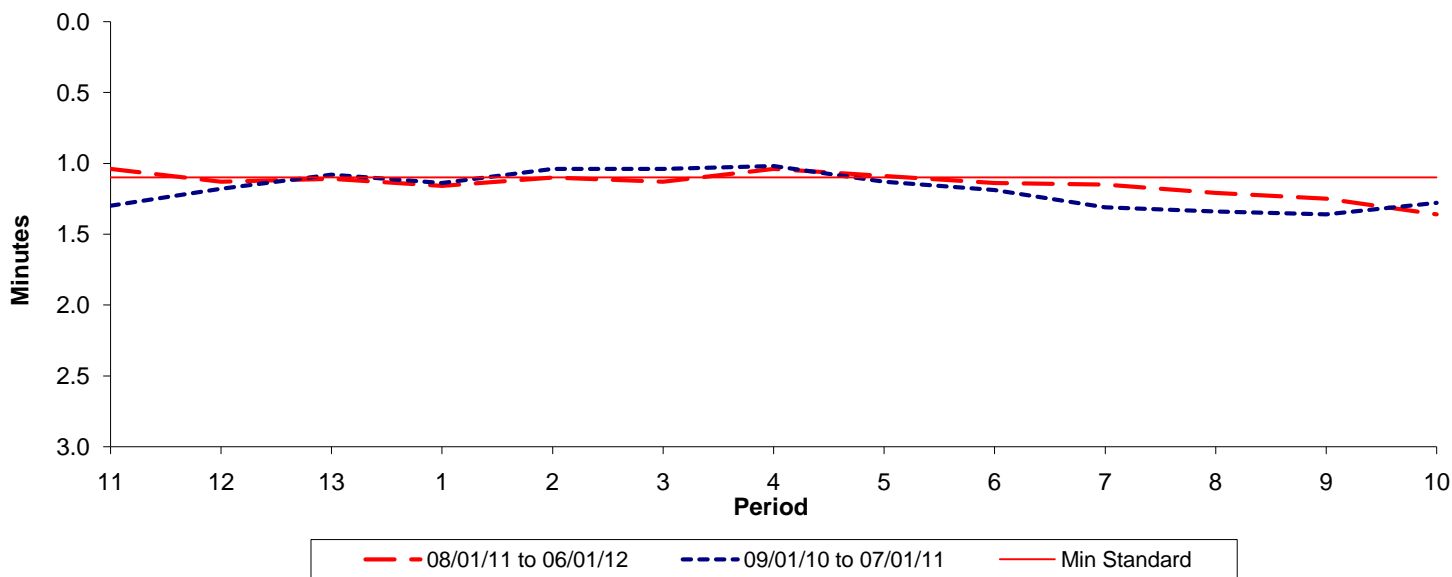




Reliability Performance (High Frequency)

Excess Waiting Time (minutes)

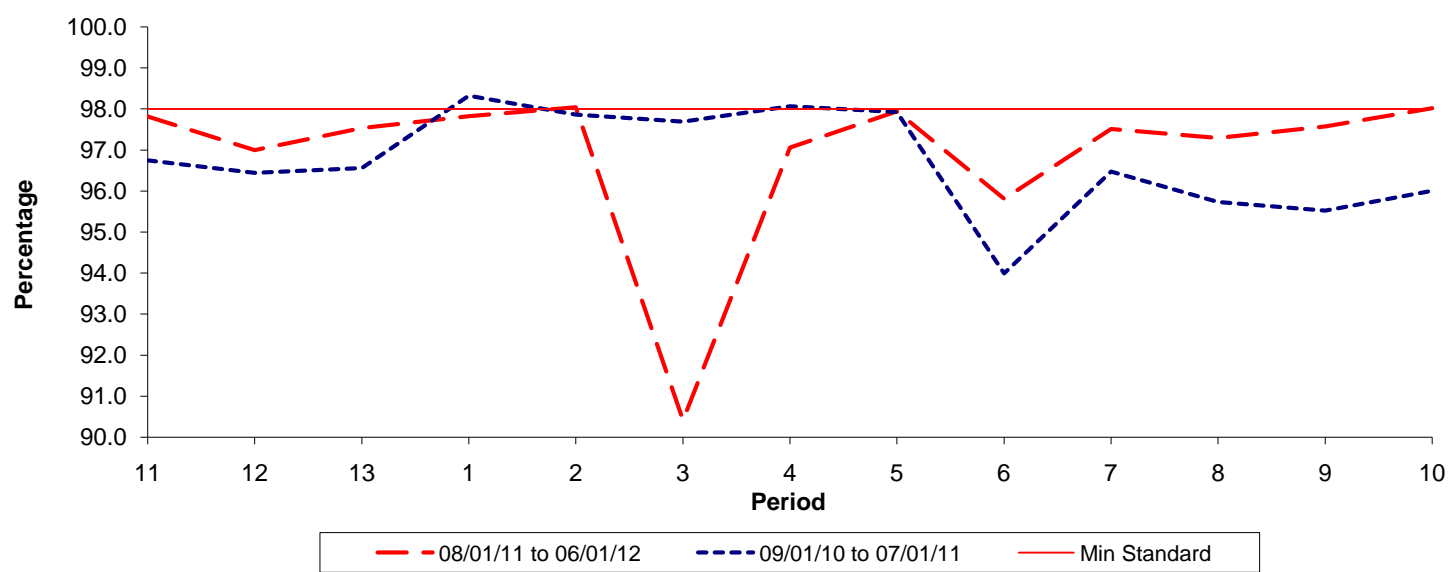


Date Range / Period	11	12	13	1	2	3	4	5	6	7	8	9	10
08/01/11 to 06/01/12	1.04	1.13	1.11	1.16	1.10	1.13	1.04	1.09	1.14	1.15	1.21	1.25	1.36
09/01/10 to 07/01/11	1.30	1.18	1.08	1.14	1.04	1.04	1.02	1.13	1.19	1.31	1.34	1.36	1.28
Min Standard	1.10	1.10	1.10	1.10	1.10	1.10	1.10	1.10	1.10	1.10	1.10	1.10	1.10

Excess Waiting Time figures are based on 12 weeks data

Kilometre Performance

% Kilometres Operated



Date Range / Period	11	12	13	1	2	3	4	5	6	7	8	9	10
08/01/11 to 06/01/12	97.81	97.00	97.53	97.82	98.04	90.41	97.06	97.94	95.81	97.51	97.29	97.57	98.02
09/01/10 to 07/01/11	96.75	96.44	96.56	98.32	97.86	97.69	98.06	97.93	93.99	96.47	95.73	95.52	96.01
Min Standard	98.00	98.00	98.00	98.00	98.00	98.00	98.00	98.00	98.00	98.00	98.00	98.00	98.00

Kilometre figures are based on 4 weeks data