

## Aggregate Income and Productivity Trends, Canada vs United States

### List of Tables

---

Table 1: Aggregate Income Trends, Canada  
Table 1A: Aggregate Income Trends, Annual Rate of Change, Canada  
Table 2: Aggregate Income Trends, US  
Table 2A: Aggregate Income Trends, Annual Rate of Change, US  
Table 3: Relative Aggregate Income Trends in Canada and US  
Table 4: Productivity in the Total Economy, Canada  
Table 4A: Productivity in the Total Economy, Annual Rate of Change, Canada  
Table 5: Productivity in the Total Economy, US  
Table 5A: Productivity in the Total Economy, Annual Rate of Change, US  
Table 6: Annual Productivity in the Business Sector in Canada and the United States, 1992=100  
Table 6A: Annual Productivity in the Business Sector in Canada and the United States, Annual Rate of Change  
Table 6B: Productivity in the Business Sector in Canada and the United States by Quarter, 1992=100  
Table 6C: Productivity in the Business Sector in Canada and the United States by Quarter, year-over-year rates of change  
Table 6D: Productivity in the Business Sector in Canada and the United States by Quarter, quarter-to-quarter compound annualized growth rates  
Table 7: Relative Labour Productivity Trends in the Total Economy in Canada and US  
Table 7a: Relative Labour Productivity Trends in the Business Sector in Canada and US  
Table 8: Main Labour Market Variables, Canada  
Table 8A: Main Labour Market Variables, Annual Rate of Change, Canada  
Table 9: Main Labour Market Variables, US  
Table 9A: Main Labour Market Variables, Annual Rate of Change, US  
Table 10: GDP per capita decomposition into Productivity and Labour Market Components, Canada  
Table 10A: GDP per capita decomposition into Productivity and Labour Market Components, Annual Rate of Change, Canada  
Table 11: GDP per capita decomposition into Productivity and Labour Market Components, US  
Table 11A: GDP per capita decomposition into Productivity and Labour Market Components, Annual Rate of Change, US

### List of Charts

---

Chart 1: Relative Aggregate Income Trends in Canada, 1961-2005 (Canada as % of the United States)  
Chart 1a: Relative Aggregate Income Trends in Canada, 1989-2005 (Canada as % of the United States)  
Chart 2: Personal Disposable Income as Share of Personal Income in Canada and the United States, 1961-2005  
Chart 3: Relative Labour Productivity Levels in the Total Economy in Canada, 1961-2005 (Canada as % of the United States)  
Chart 3a: Relative Labour Productivity Levels in the Business Sector in Canada, 1961-2005 (Canada as % of the United States)  
Chart 4: Working Age Population in Canada and the United States, 1989-2005  
Chart 5: Labour Force in Canada and the United States, 1989-2005  
Chart 6: Employment in Canada and the United States, 1989-2005  
Chart 7: Unemployment in Canada and the United States, 1989-2005  
Chart 8: Real GDP in Canada and the United States, 1989-2005  
Chart 9: Real GDP per worker in Canada and the United States, 1989-2005  
Chart 10: Labour Force Participation Rate in Canada and the United States, 1989-2005  
Chart 11: Employment to Working Age Population Ratio in Canada and the United States, 1989-2005

Last Updated: July 5, 2006.

**Table 1: Aggregate Income Trends in Canada**

Year	Population, annual average of mid-quarter estimates	Nominal GDP at market prices, millions of current \$	Personal Income, millions of current \$	CPI, 1997=100	GDP deflator, 1997=100	GDP, million 1997\$	PI, million 1997\$	PDI, million 1997\$	GDP per capita, current \$	PI per capita, current \$	PDI per capita, current \$	GDP per capita, 1997 CAD\$	PI per capita, 1997 CAD\$	PDI per capita, 1997 CAD\$
1961	18,224,500	41,173	30,572	17.4	16.8	245,230	175,912	158,696	2,259	1,678	1,513	13,456	9,652	8,708
1962	18,570,750	44,665	33,238	17.6	17.0	262,382	189,228	170,811	2,405	1,790	1,616	14,129	10,190	9,198
1963	18,919,000	47,961	35,476	17.8	17.4	276,306	198,813	179,468	2,535	1,875	1,693	14,605	10,509	9,486
1964	19,277,250	52,549	38,146	18.2	17.9	294,196	209,414	187,444	2,726	1,979	1,771	15,261	10,863	9,724
1965	19,633,500	57,930	41,904	18.6	18.5	312,930	225,444	201,051	2,951	2,134	1,903	15,939	11,483	10,240
1966	19,997,500	64,818	47,098	19.3	19.4	333,724	243,642	213,203	3,241	2,355	2,061	16,688	12,184	10,661
1967	20,363,750	69,698	51,409	20.0	20.3	343,454	257,284	221,836	3,423	2,525	2,177	16,866	12,634	10,894
1968	20,692,000	76,131	56,253	20.8	21.1	360,214	270,215	229,836	3,679	2,719	2,312	17,408	13,059	11,108
1969	20,994,250	83,825	62,650	21.7	22.2	378,344	288,083	240,206	3,993	2,984	2,488	18,021	13,722	11,441
1970	21,287,500	90,179	67,932	22.5	23.1	389,809	302,045	248,343	4,236	3,191	2,624	18,312	14,189	11,666
1971	21,747,314	98,429	74,650	23.1	24.3	405,860	322,584	263,922	4,526	3,433	2,808	18,663	14,833	12,136
1972	22,187,140	109,913	84,533	24.3	25.7	427,962	348,496	286,591	4,954	3,810	3,133	19,289	15,707	12,917
1973	22,453,775	128,956	98,699	26.1	28.2	457,766	377,936	310,907	5,743	4,396	3,616	20,387	16,832	13,847
1974	22,772,045	154,038	118,139	28.9	32.5	474,663	408,738	333,750	6,764	5,188	4,236	20,844	17,949	14,656
1975	23,102,980	173,621	137,240	32.1	35.9	483,316	428,030	351,531	7,515	5,940	4,879	20,920	18,527	15,216
1976	23,414,365	199,994	156,705	34.5	39.3	508,445	454,487	370,628	8,542	6,693	5,458	21,715	19,411	15,829
1977	23,694,035	220,973	173,675	37.2	42.0	526,028	467,186	381,160	9,326	7,330	5,980	22,201	19,717	16,087
1978	23,935,651	244,877	193,924	40.5	44.8	546,825	478,583	395,163	10,231	8,102	6,690	22,846	19,995	16,509
1979	24,170,445	279,577	218,323	44.2	49.3	567,631	493,520	408,534	11,567	9,033	7,477	23,485	20,418	16,902
1980	24,471,129	314,390	248,672	48.7	54.2	579,907	510,632	422,223	12,847	10,162	8,402	23,698	20,867	17,254
1981	24,785,059	360,471	290,789	54.7	60.1	600,253	531,221	435,891	14,544	11,732	9,627	24,218	21,433	17,587
1982	25,083,479	379,859	321,752	60.7	65.1	583,089	530,176	434,111	15,144	12,827	10,503	23,246	21,136	17,307
1983	25,336,505	411,386	339,013	64.2	68.7	598,941	527,899	429,044	16,237	13,380	10,875	23,639	20,835	16,934
1984	25,577,353	449,582	367,333	67.0	70.9	633,756	548,197	446,471	17,577	14,362	11,697	24,778	21,433	17,456
1985	25,813,854	485,714	397,858	69.7	73.1	664,059	570,794	463,382	18,816	15,413	12,512	25,725	22,112	17,951
1986	26,068,353	512,541	425,757	72.6	75.4	680,144	586,574	468,980	19,661	16,332	13,058	26,091	22,501	17,990
1987	26,399,956	558,949	457,702	75.7	78.8	709,058	604,279	478,173	21,172	17,337	13,719	26,858	22,889	18,113
1988	26,754,940	613,094	502,542	78.8	82.4	744,333	637,659	501,478	22,915	18,783	14,772	27,820	23,833	18,743
1989	27,219,748	657,728	546,324	82.7	86.1	763,837	660,500	523,216	24,164	20,071	15,899	28,062	24,265	19,222
1990	27,638,583	679,921	586,566	86.7	88.8	765,311	676,468	527,505	24,600	21,223	16,549	27,690	24,476	19,086
1991	27,987,829	685,367	605,322	91.5	91.5	749,294	661,245	516,162	24,488	21,628	16,883	26,772	23,626	18,442
1992	28,319,473	700,480	620,653	92.9	92.7	755,848	667,823	520,106	24,735	21,916	17,068	26,690	23,582	18,366
1993	28,648,235	727,184	633,059	94.6	94.0	773,528	669,127	523,143	25,383	22,098	17,277	27,001	23,357	18,261
1994	28,958,270	770,873	646,348	94.8	95.1	810,695	681,834	529,221	26,620	22,320	17,324	27,995	23,545	18,275
1995	29,262,649	810,426	672,111	96.8	97.2	833,456	694,042	536,542	27,695	22,968	17,756	28,482	23,718	18,335
1996	29,570,577	836,864	687,203	98.4	98.8	846,952	698,235	536,255	28,301	23,239	17,848	28,642	23,612	18,135
1997	29,868,726	882,733	715,495	100.0	100.0	882,733	715,495	546,166	29,554	23,955	18,286	29,554	23,955	18,286
1998	30,125,715	914,973	748,321	100.9	99.6	918,910	741,430	563,529	30,372	24,840	18,880	30,503	24,611	18,706
1999	30,369,575	982,441	783,060	102.7	101.3	969,750	762,509	580,579	32,350	25,784	19,632	31,932	25,108	19,117
2000	30,650,631	1,076,577	840,382	105.5	105.5	1,020,488	796,697	606,321	35,124	27,418	20,866	33,294	25,993	19,782
2001	30,974,465	1,108,048	876,471	108.2	106.7	1,038,702	810,209	618,604	35,773	28,297	21,605	33,534	26,157	19,971
2002	31,322,332	1,152,905	898,843	110.6	107.8	1,069,282	812,735	627,525	36,808	28,697	22,157	34,138	25,947	20,034
2003	31,626,552	1,213,408	932,486	113.7	111.4	1,088,773	820,405	635,119	38,367	29,484	22,825	34,426	25,940	20,082
2004	31,932,015	1,290,788	979,012	115.8	114.8	1,124,688	845,439	652,794	40,423	30,659	23,673	35,221	26,476	20,443
2005	32,232,391	1,371,425	1,027,733	118.3	118.5	1,157,705	868,689	665,653	42,548	31,885	24,433	35,917	26,951	20,652
Average annual rates of growth, %														
61-73	1.75	9.98	10.26	9.42	3.45	4.41	6.58	5.76	8.09	8.36	7.53	3.52	4.74	3.94
73-81	1.24	13.71	14.46	14.42	9.69	9.92	3.45	4.35	12.32	13.06	13.02	2.18	3.07	3.03
81-89	1.18	7.81	8.20	7.73	5.30	4.61	3.06	2.76	6.55	6.94	6.47	1.86	1.56	1.12
89-00	1.09	4.58	3.99	3.61	2.24	1.86	2.67	1.72	3.46	2.88	2.50	1.57	0.63	0.26
89-96	1.19	3.50	3.33	2.88	2.51	1.98	1.49	0.80	2.28	2.12	1.67	0.29	-0.39	-0.83
96-05	0.96	5.64	4.57	4.55	2.07	2.04	3.53	2.46	4.63	3.58	3.55	2.55	1.48	1.45
89-05	1.06	4.70	4.03	3.81	2.26	2.01	2.63	1.73	3.60	2.94	2.72	1.55	0.66	0.45
96-00	0.90	6.50	5.16	4.92	1.75	1.65	4.77	3.35	5.55	4.22	3.98	3.83	2.43	2.20
00-05	1.01	4.96	4.11	4.25	2.32	2.35	2.56	1.75	3.91	3.06	3.21	1.53	0.73	0.86

Sources: Statistics Canada: Nominal GDP, CANSIMII v646937; Real GDP, CANSIMII v3860085; Population, CANSIMII v1; PI, PDI, CANSIMII v647016, v647037; CPI, CANSIMII v737344. Current as of July 5, 2006.

Note: CPI was re-based to 1997. Real GDP is expressed in 1997 chained dollars, PI and PDI are deflated using the CPI.

**Table 1A: Aggregate Income Trends in Canada (annual % change)**

Year	Population, annual average of mid-quarter estimates, annual % change	GDP, million 1997\$ annual % change	PI, million 1997\$ annual % change	PDI, million 1997\$ annual % change	CPI, 1997=100 annual % change	GDP defl, 1997=100 annual % change	GDP per capita annual % change	PI per capita annual % change	PDI per capita annual % change
1961									
1962	1.90	6.99	7.57	7.63	1.07	1.39	5.00	5.56	5.63
1963	1.88	5.31	5.07	5.07	1.59	1.97	3.37	3.13	3.13
1964	1.89	6.47	5.33	4.44	2.08	2.90	4.50	3.37	2.50
1965	1.85	6.37	7.65	7.26	2.04	3.64	4.44	5.70	5.31
1966	1.85	6.64	8.07	6.04	4.00	4.92	4.70	6.10	4.11
1967	1.83	2.92	5.60	4.05	3.37	4.48	1.06	3.70	2.18
1968	1.61	4.88	5.03	3.61	4.19	4.15	3.22	3.36	1.96
1969	1.46	5.03	6.61	4.51	4.46	4.83	3.52	5.08	3.01
1970	1.40	3.03	4.85	3.39	3.42	4.42	1.61	3.40	1.96
1971	2.16	4.12	6.80	6.27	2.89	4.83	1.92	4.54	4.03
1972	2.02	5.45	8.03	8.59	4.82	5.90	3.36	5.89	6.44
1973	1.20	6.96	8.45	8.48	7.66	9.69	5.69	7.16	7.20
1974	1.42	3.69	8.15	7.35	10.68	15.20	2.24	6.64	5.85
1975	1.45	1.82	4.72	5.33	10.93	10.70	0.36	3.22	3.82
1976	1.35	5.20	6.18	5.43	7.54	9.50	3.80	4.77	4.03
1977	1.19	3.46	2.79	2.84	7.82	6.80	2.24	1.58	1.63
1978	1.02	3.95	2.44	3.67	9.00	6.60	2.90	1.41	2.63
1979	0.98	3.80	3.12	3.38	9.17	9.99	2.80	2.12	2.38
1980	1.24	2.16	3.47	3.35	10.08	10.07	0.91	2.20	2.08
1981	1.28	3.51	4.03	3.24	12.40	10.77	2.20	2.71	1.93
1982	1.20	-2.86	-0.20	-0.41	10.87	8.48	-4.02	-1.38	-1.59
1983	1.01	2.72	-0.43	-1.17	5.82	5.43	1.69	-1.42	-2.15
1984	0.95	5.81	3.85	4.06	4.34	3.28	4.82	2.87	3.08
1985	0.92	4.78	4.12	3.79	4.02	3.11	3.82	3.17	2.84
1986	0.99	2.42	2.76	1.21	4.13	3.03	1.42	1.76	0.22
1987	1.27	4.25	3.02	1.96	4.35	4.61	2.94	1.72	0.68
1988	1.34	4.97	5.52	4.87	4.05	4.49	3.58	4.12	3.48
1989	1.74	2.62	3.58	4.33	4.95	4.54	0.87	1.81	2.55
1990	1.54	0.19	2.42	0.82	4.83	3.18	-1.33	0.87	-0.71
1991	1.26	-2.09	-2.25	-2.15	5.57	2.96	-3.31	-3.47	-3.37
1992	1.18	0.87	0.99	0.76	1.52	1.32	-0.31	-0.19	-0.42
1993	1.16	2.34	0.20	0.58	1.80	1.44	1.16	-0.95	-0.57
1994	1.08	4.80	1.90	1.16	0.20	1.15	3.68	0.81	0.08
1995	1.05	2.81	1.79	1.38	2.16	2.26	1.74	0.73	0.33
1996	1.05	1.62	0.60	-0.05	1.63	1.62	0.56	-0.44	-1.09
1997	1.01	4.22	2.47	1.85	1.61	1.21	3.18	1.45	0.83
1998	0.86	4.10	3.62	3.18	0.93	-0.43	3.21	2.74	2.30
1999	0.81	5.53	2.84	3.03	1.75	1.74	4.69	2.02	2.20
2000	0.93	5.23	4.48	4.43	2.71	4.13	4.27	3.53	3.48
2001	1.06	1.78	1.70	2.03	2.56	1.12	0.72	0.63	0.96
2002	1.12	2.94	0.31	1.44	2.23	1.07	1.80	-0.80	0.32
2003	0.97	1.82	0.94	1.21	2.77	3.36	0.84	-0.03	0.24
2004	0.97	3.30	3.05	2.78	1.88	2.98	2.31	2.07	1.80
2005	0.94	2.94	2.75	1.97	2.17	3.22	1.98	1.79	1.02

**Table 2: Aggregate Income Trends in the United States**

Year	Population, annual average of mid-quarter estimates, thousands	Nominal GDP at market prices, billions current \$	Personal Income, billions current \$	Personal Disposable Income, billions current \$	CPI, 2000=100	GDP defl, 2000=100	GDP, billions 2000\$	PI, billion 2000\$	PDI, billion 2000\$	GDP per capita, 2000\$	PI per capita, 2000\$	PDI per capita, 2000\$
	A	B	C	D	E	F = B / G * 100	G	H = C / E *	I = D / E *	J = G / A *	K = I / A *	L = I / A *
								100	100	1,000,000	1,000,000	1,000,000
1961	183,742	544.7	429.0	381.8	17.36	21.28	2,560	2,471	2,199	13,933	13,450	11,970
1962	186,590	585.6	456.7	405.1	17.57	21.57	2,715	2,600	2,306	14,552	13,933	12,359
1963	189,300	617.7	479.6	425.1	17.78	21.80	2,834	2,697	2,390	14,971	14,246	12,627
1964	191,927	663.6	514.6	462.5	18.01	22.13	2,999	2,857	2,568	15,624	14,886	13,379
1965	194,347	719.1	555.7	498.1	18.30	22.53	3,191	3,037	2,722	16,420	15,627	14,007
1966	196,599	787.8	603.9	537.5	18.85	23.18	3,399	3,204	2,852	17,290	16,296	14,505
1967	198,752	832.6	648.3	575.3	19.37	23.89	3,485	3,347	2,970	17,532	16,838	14,942
1968	200,745	910.0	712.0	625.0	20.20	24.91	3,653	3,525	3,094	18,196	17,559	15,413
1969	202,736	984.6	778.5	674.0	21.30	26.15	3,765	3,654	3,164	18,573	18,026	15,606
1970	205,089	1,038.5	838.8	735.7	22.55	27.53	3,772	3,720	3,263	18,392	18,140	15,910
1971	207,692	1,127.1	903.5	801.8	23.51	28.91	3,899	3,842	3,410	18,771	18,500	16,418
1972	209,924	1,238.3	992.7	869.1	24.28	30.17	4,105	4,088	3,579	19,555	19,473	17,049
1973	211,939	1,382.7	1,110.7	978.3	25.78	31.85	4,342	4,308	3,794	20,485	20,325	17,902
1974	213,898	1,500.0	1,222.6	1,071.6	28.63	34.73	4,320	4,270	3,742	20,195	19,961	17,496
1975	215,981	1,638.3	1,335.0	1,187.4	31.25	38.00	4,311	4,272	3,799	19,961	19,778	17,591
1976	218,086	1,825.3	1,474.8	1,302.5	33.05	40.20	4,541	4,463	3,941	20,822	20,463	18,072
1977	220,289	2,030.9	1,633.2	1,435.7	35.20	42.75	4,751	4,640	4,079	21,565	21,064	18,517
1978	222,629	2,294.7	1,837.7	1,608.3	37.88	45.76	5,015	4,851	4,246	22,526	21,790	19,070
1979	225,106	2,563.3	2,062.2	1,793.5	42.15	49.55	5,173	4,893	4,255	22,982	21,737	18,904
1980	227,726	2,789.5	2,307.9	2,009.0	47.86	54.04	5,162	4,823	4,198	22,666	21,177	18,434
1981	230,008	3,128.4	2,591.3	2,246.1	52.80	59.12	5,292	4,908	4,254	23,007	21,337	18,494
1982	232,218	3,255.0	2,775.3	2,421.2	56.04	62.73	5,189	4,952	4,321	22,347	21,327	18,605
1983	234,333	3,536.7	2,960.7	2,608.4	57.84	65.21	5,424	5,119	4,510	23,146	21,844	19,245
1984	236,394	3,933.2	3,289.5	2,912.0	60.33	67.66	5,814	5,453	4,827	24,593	23,066	20,419
1985	238,506	4,220.3	3,526.7	3,109.3	62.47	69.71	6,054	5,646	4,978	25,382	23,671	21,870
1986	240,683	4,462.8	3,722.4	3,285.1	63.65	71.25	6,264	5,848	5,161	26,024	24,298	22,443
1987	242,843	4,739.5	3,947.4	3,458.3	65.98	73.20	6,475	5,982	5,241	26,664	24,635	21,582
1988	245,061	5,103.8	4,253.7	3,748.7	68.67	75.69	6,743	6,194	5,459	27,514	25,275	22,274
1989	247,387	5,484.4	4,587.8	4,021.7	71.99	78.56	6,981	6,373	5,586	28,221	25,761	22,582
1990	250,181	5,803.1	4,878.6	4,285.8	75.88	81.59	7,113	6,430	5,648	28,429	25,700	22,577
1991	253,530	5,995.9	5,051.0	4,464.3	79.09	84.44	7,101	6,386	5,645	28,007	25,190	22,264
1992	256,922	6,337.7	5,362.0	4,751.4	81.48	86.38	7,337	6,580	5,831	28,556	25,612	22,696
1993	260,282	6,657.4	5,558.5	4,911.9	83.89	88.38	7,533	6,626	5,855	28,941	25,457	22,496
1994	263,455	7,072.2	5,842.5	5,151.8	86.08	90.26	7,836	6,788	5,985	29,741	25,763	22,718
1995	266,588	7,397.7	6,152.3	5,408.2	88.49	92.11	8,032	6,952	6,112	30,128	26,079	22,925
1996	269,714	7,816.9	6,520.6	5,688.5	91.09	93.85	8,329	7,159	6,245	30,880	26,542	23,155
1997	272,958	8,304.3	6,915.1	5,988.8	93.22	95.41	8,704	7,418	6,425	31,886	27,178	23,537
1998	276,154	8,747.0	7,423.0	6,395.9	94.66	96.47	9,067	7,842	6,757	32,833	28,396	24,467
1999	279,328	9,268.4	7,802.4	6,695.0	96.73	97.87	9,470	8,066	6,921	33,904	28,876	24,778
2000	282,429	9,817.0	8,429.7	7,194.0	100.00	100.00	9,817	8,430	7,194	34,759	29,847	25,472
2001	285,371	10,128.0	8,724.1	7,486.8	102.83	102.40	9,891	8,484	7,281	34,659	29,731	25,514
2002	288,253	10,469.6	8,881.9	7,830.1	104.46	104.19	10,049	8,503	7,496	34,861	29,498	26,005
2003	291,114	10,971.2	9,169.1	8,169.2	106.83	106.30	10,321	8,583	7,647	35,452	29,483	26,268
2004	293,933	11,734.3	9,713.3	8,664.2	109.69	109.10	10,756	8,855	7,899	36,592	30,127	26,873
2005	296,677	12,487.1	10,237.7	9,029.9	113.41	112.15	11,135	9,027	7,962	37,531	30,428	26,838
Average annual rates of growth, %												
61-73	1.20	8.07	8.25	8.16	3.35	3.42	4.50	4.74	4.65	3.26	3.50	3.41
73-81	1.03	10.75	11.17	10.95	9.37	8.04	2.50	1.64	1.44	1.46	0.61	0.41
81-89	0.91	7.27	7.40	7.55	3.95	3.62	3.52	3.32	3.47	2.59	2.38	2.53
89-00	1.21	5.44	5.69	5.43	3.03	2.22	3.15	2.58	2.33	1.91	1.35	1.10
89-96	1.24	5.19	5.15	5.08	3.42	2.57	2.55	1.68	1.61	1.30	0.43	0.36
96-05	1.06	5.34	5.14	5.27	2.47	2.00	3.28	2.61	2.74	2.19	1.53	1.65
89-05	1.14	5.28	5.14	5.19	2.88	2.25	2.96	2.20	2.24	1.80	1.05	1.09
96-00	1.16	5.86	6.63	6.05	2.36	1.60	4.20	4.17	3.60	3.00	2.98	2.41
00-05	0.99	4.93	3.96	4.65	2.55	2.32	2.55	1.38	2.05	1.55	0.39	1.05

Source:

[A]: Population: BEA, Table 2.1 in the NIPA tables, as of July 5, 2006.

[B]: Nominal GDP: Bureau of Economic Analysis NIPA Tables 1.1.5 as of July 5, 2006.

[C]-[D]: PI and PDI in current dollars, BEA, Table 2.1 in NIPA Tables, as of July 5, 2006.

[E]: Consumer Price Index: Bureau of Labour Statistics series CUUR0000SA0, calculated annual data by using monthly data average and reindexed to 2000=100, as of July 5, 2006.

[G]: GDP billion 2000\$, BEA, Table 1.1.6., as of July 5, 2006

Note: Real GDP is expressed in 2000 chained dollars, PI and PDI are deflated using the CPI.

**Table 2A: Aggregate Income Trends in the United States (annual % change)**

Year	Population, annual average of mid-quarter estimates, annual % change	GDP, billion 2000\$ annual % change	PI, billion 2000\$ annual % change	PDI, billion 2000\$ annual % change	CPI, 2000=100 annual % change	GDP defl., 2000=100 annual % change	GDP per capita annual % change	PI per capita annual % change	PDI per capita annual % change
1961									
1962	1.55	6.06	5.20	4.85	1.20	1.36	4.44	3.59	3.25
1963	1.45	4.38	3.73	3.65	1.24	1.06	2.88	2.24	2.17
1964	1.39	5.81	5.94	7.42	1.28	1.53	4.36	4.49	5.95
1965	1.26	6.42	6.30	6.02	1.59	1.83	5.09	4.98	4.70
1966	1.16	6.52	5.49	4.75	3.02	2.85	5.30	4.28	3.55
1967	1.10	2.52	4.46	4.14	2.77	3.09	1.40	3.32	3.02
1968	1.00	4.82	5.33	4.19	4.27	4.27	3.78	4.28	3.15
1969	0.99	3.09	3.68	2.25	5.46	4.96	2.07	2.66	1.25
1970	1.16	0.17	1.80	3.13	5.84	5.29	-0.98	0.63	1.95
1971	1.27	3.36	3.28	4.50	4.29	5.00	2.06	1.99	3.19
1972	1.07	5.29	6.39	4.96	3.27	4.34	4.17	5.26	3.84
1973	0.96	5.76	5.38	6.02	6.18	5.58	4.76	4.37	5.01
1974	0.92	-0.50	-0.88	-1.37	11.05	9.03	-1.42	-1.79	-2.27
1975	0.97	-0.19	0.05	1.52	9.14	9.43	-1.16	-0.92	0.54
1976	0.97	5.33	4.47	3.73	5.74	5.78	4.31	3.46	2.73
1977	1.01	4.62	3.98	3.50	6.50	6.35	3.57	2.94	2.46
1978	1.06	5.57	4.54	4.08	7.63	7.03	4.46	3.44	2.99
1979	1.11	3.16	0.86	0.23	11.25	8.29	2.02	-0.25	-0.87
1980	1.16	-0.23	-1.44	-1.35	13.55	9.07	-1.37	-2.57	-2.49
1981	1.00	2.52	1.76	1.33	10.33	9.39	1.50	0.75	0.32
1982	0.96	-1.94	0.91	1.57	6.13	6.10	-2.87	-0.05	0.60
1983	0.91	4.52	3.36	4.38	3.21	3.96	3.58	2.43	3.44
1984	0.88	7.19	6.52	7.04	4.30	3.75	6.25	5.60	6.10
1985	0.89	4.13	3.54	3.12	3.55	3.04	3.21	2.62	2.21
1986	0.91	3.47	3.58	3.69	1.90	2.20	2.53	2.65	2.75
1987	0.90	3.38	2.30	1.55	3.66	2.73	2.46	1.39	0.65
1988	0.91	4.13	3.54	4.15	4.08	3.41	3.19	2.60	3.21
1989	0.95	3.54	2.89	2.34	4.83	3.78	2.57	1.92	1.38
1990	1.13	1.88	0.89	1.11	5.40	3.86	0.74	-0.23	-0.02
1991	1.34	-0.17	-0.67	-0.07	4.23	3.50	-1.49	-1.98	-1.39
1992	1.34	3.33	3.04	3.30	3.03	2.30	1.96	1.68	1.94
1993	1.31	2.67	0.69	0.41	2.95	2.31	1.35	-0.61	-0.88
1994	1.22	4.02	2.44	2.22	2.61	2.13	2.77	1.20	0.99
1995	1.19	2.50	2.43	2.11	2.81	2.05	1.30	1.23	0.91
1996	1.17	3.70	2.97	2.19	2.93	1.90	2.50	1.77	1.00
1997	1.20	4.50	3.63	2.87	2.34	1.66	3.26	2.40	1.65
1998	1.17	4.18	5.70	5.17	1.55	1.11	2.97	4.48	3.95
1999	1.15	4.45	2.86	2.44	2.19	1.45	3.26	1.69	1.27
2000	1.11	3.66	4.51	3.94	3.38	2.18	2.52	3.36	2.80
2001	1.04	0.75	0.65	1.21	2.83	2.40	-0.29	-0.39	0.17
2002	1.01	1.60	0.22	2.95	1.59	1.75	0.58	-0.78	1.92
2003	0.99	2.70	0.94	2.01	2.27	2.03	1.70	-0.05	1.01
2004	0.97	4.22	3.17	3.29	2.68	2.63	3.22	2.18	2.30
2005	0.93	3.52	1.94	0.80	3.39	2.79	2.57	1.00	-0.13

**Table 3: Relative Aggregate Income Levels in Canada and the United States**

Year	Canada									United States				Canada as % of US		
	GDP per capita, current CAD\$	PI per capita, current CAD\$	PDI per capita, current CAD\$	GDP PPP exchange rate, US\$/CAD\$	Individual Consumption PPP exchange rate, US\$/CAD\$	GDP per capita, current US\$	PI per capita, current US\$	PDI per capita, current US\$	PDI/PI ratio, %	GDP per capita, current US\$	PI per capita, current US\$	PDI per capita, current US\$	PDI/PI ratio, %	GDP per capita	PI per capita	PDI per capita
	A	B	C	D	E	F=A*D	G=B*E	H=C*E	I=H/G*100	J	K	L	M=L/K*100	N=J/F*100	O=K/G*100	P=L/H*100
1961	2,259	1,678	1,513	1.10	0.934	2,488	1,567	1,414	90.21	2,964	2,335	2,078	89.00	83.93	67.12	68.03
1962	2,405	1,790	1,616	1.10	0.935	2,648	1,674	1,511	90.27	3,138	2,448	2,171	88.70	84.37	68.40	69.60
1963	2,535	1,875	1,693	1.09	0.932	2,766	1,748	1,578	90.27	3,263	2,534	2,246	88.64	84.77	68.99	70.26
1964	2,726	1,979	1,771	1.08	0.925	2,935	1,830	1,638	89.51	3,458	2,681	2,410	89.88	84.88	68.25	67.97
1965	2,951	2,134	1,903	1.06	0.921	3,121	1,965	1,752	89.18	3,700	2,859	2,563	89.63	84.35	68.72	68.37
1966	3,241	2,355	2,061	1.04	0.912	3,361	2,148	1,879	87.51	4,007	3,072	2,734	89.00	83.88	69.92	68.74
1967	3,423	2,525	2,177	1.02	0.907	3,502	2,289	1,974	86.22	4,189	3,262	2,895	88.74	83.59	70.18	68.18
1968	3,679	2,719	2,312	1.02	0.907	3,769	2,467	2,098	85.06	4,533	3,547	3,113	87.78	83.14	69.56	67.40
1969	3,993	2,984	2,488	1.03	0.916	4,095	2,734	2,280	83.38	4,857	3,840	3,325	86.58	84.32	71.20	68.57
1970	4,236	3,191	2,624	1.03	0.938	4,381	2,992	2,460	82.22	5,064	4,090	3,587	87.71	86.52	73.15	68.58
1971	4,526	3,433	2,808	1.04	0.950	4,688	3,262	2,669	81.82	5,427	4,350	3,861	88.74	86.40	74.99	69.13
1972	4,954	3,810	3,133	1.02	0.936	5,056	3,567	2,934	82.24	5,899	4,729	4,140	87.55	85.72	75.44	70.86
1973	5,743	4,396	3,616	0.98	0.923	5,642	4,059	3,339	82.26	6,524	5,241	4,616	88.08	86.48	77.45	72.34
1974	6,764	5,188	4,236	0.93	0.927	6,290	4,807	3,925	81.65	7,013	5,716	5,010	87.65	89.69	84.10	78.34
1975	7,515	5,940	4,879	0.92	0.912	6,908	5,415	4,447	82.13	7,585	6,181	5,498	88.94	91.07	87.61	80.90
1976	8,542	6,693	5,458	0.89	0.896	7,585	5,999	4,892	81.55	8,370	6,762	5,972	88.32	90.63	88.72	81.92
1977	9,326	7,330	5,980	0.88	0.885	8,248	6,490	5,295	81.59	9,219	7,414	6,517	87.91	89.46	87.54	81.25
1978	10,231	8,102	6,690	0.89	0.874	9,084	7,084	5,849	82.57	10,307	8,255	7,224	87.52	88.13	85.82	80.97
1979	11,567	9,033	7,477	0.87	0.891	10,111	8,048	6,662	82.78	11,387	9,161	7,967	86.97	88.80	87.85	83.62
1980	12,847	10,162	8,402	0.87	0.919	11,129	9,339	7,722	82.69	12,449	10,135	8,822	87.05	90.85	92.15	87.54
1981	14,544	11,732	9,627	0.86	0.902	12,442	10,584	8,685	82.05	13,601	11,266	9,765	86.68	91.47	93.95	88.94
1982	15,144	12,827	10,503	0.84	0.864	12,671	11,078	9,071	81.88	14,017	11,951	10,426	87.24	90.39	92.69	87.00
1983	16,237	13,380	10,875	0.82	0.842	13,395	11,271	9,160	81.27	15,093	12,635	11,131	88.10	88.75	89.21	82.29
1984	17,577	14,362	11,697	0.83	0.842	14,567	12,093	9,849	81.44	16,638	13,915	12,318	88.52	87.55	86.90	79.95
1985	18,816	15,413	12,512	0.83	0.838	15,584	12,918	10,487	81.18	17,695	14,787	13,037	88.16	88.07	87.36	80.44
1986	19,661	16,332	13,058	0.82	0.820	16,154	13,395	10,710	79.95	18,542	15,466	13,649	88.25	87.12	86.61	78.46
1987	21,172	17,337	13,719	0.81	0.815	17,083	14,125	11,178	79.13	19,517	16,255	14,241	87.61	87.53	86.90	78.49
1988	22,915	18,783	14,772	0.80	0.815	18,299	15,308	12,038	78.64	20,827	17,358	15,297	88.13	87.86	88.19	78.70
1989	24,164	20,071	15,899	0.79	0.814	19,156	16,338	12,942	79.22	22,169	18,545	16,257	87.66	86.41	88.10	79.61
1990	24,600	21,223	16,549	0.80	0.818	19,632	17,368	13,544	77.98	23,196	19,500	17,131	87.85	84.64	89.07	79.06
1991	24,488	21,628	16,883	0.80	0.808	19,645	17,476	13,641	78.06	23,650	19,923	17,609	88.38	83.07	87.72	77.47
1992	24,735	21,916	17,068	0.81	0.82	20,035	17,971	13,996	77.88	24,668	20,870	18,494	88.61	81.22	86.11	75.68
1993	25,383	22,098	17,277	0.82	0.83	20,814	18,341	14,340	78.18	25,578	21,356	18,871	88.37	81.38	85.88	75.99
1994	26,620	22,320	17,324	0.83	0.83	22,095	18,526	14,379	77.62	26,844	22,176	19,555	88.18	82.31	83.54	73.53
1995	27,695	22,968	17,756	0.83	0.84	22,987	19,293	14,915	77.31	27,750	23,078	20,287	87.91	82.84	83.60	73.52
1996	28,301	23,239	17,848	0.84	0.85	23,772	19,754	15,171	76.80	28,982	24,176	21,091	87.24	82.02	81.71	71.93
1997	29,554	23,955	18,286	0.84	0.85	24,825	20,361	15,543	76.33	30,423	25,334	21,940	86.60	81.60	80.37	70.84
1998	30,372	24,840	18,880	0.86	0.85	26,120	21,114	16,048	76.01	31,674	26,880	23,161	86.16	82.46	78.55	69.29
1999	32,350	25,784	19,632	0.85	0.85	27,497	21,917	16,688	76.14	33,181	27,933	23,968	85.81	82.87	78.46	69.62
2000	35,124	27,418	20,866	0.84	0.85	29,504	23,305	17,736	76.10	34,759	29,847	25,472	85.34	84.88	78.08	69.63
2001	35,773	28,297	21,605	0.85	0.85	30,407	24,052	18,364	76.35	35,491	30,571	26,235	85.82	85.68	78.68	70.00
2002	36,808	28,697	22,157	0.86	0.845	31,495	24,238	18,714	77.21	36,321	30,813	27,164	88.16	86.71	78.66	68.89
2003	38,367	29,484	22,825	0.84	0.840	32,406	24,781	19,184	77.42	37,687	31,497	28,062	89.09	85.99	78.68	68.36
2004	40,423	30,659	23,673	0.84	0.847	34,026	25,970	20,052	77.21	39,922	33,046	29,477	89.20	85.23	78.59	68.03
2005	42,548	31,885	24,433	0.84	0.857	35,668	27,332	20,944	76.63	42,090	34,508	30,437	88.20	84.74	79.21	68.81

Source: Tables 1 and 2.

The GDP PPPs for 1961-1991 were calculated by multiplying the 1992 PPP estimate by the index value (1992=1.00) of the US GDP deflator as a percentage of the Canadian GDP deflator in each year.

The GDP PPPs for 2002-2005 were calculated by multiplying the 2001 PPP estimate by the index value (2001=1.00) of the US GDP deflator as a percentage of the Canadian GDP deflator.

A similar procedure was used for Individual Consumption PPPs using the CPI instead of GDP deflator. PPPs for 1992-2001 are from *Purchasing Power Parities and Real Expenditures, United States and Canada, 1992-2001*, Statistics Canada publication 13-604-MIB no. 39, June 2002.

**Table 4: Productivity in the Total Economy, Canada**

Year	GDP at market prices, millions 1997 \$	Number of Jobs, thous.	Actual hours per week per job	Total hours actually worked, mill.	Geom. End-Year Net Capital Stock, mil 1997\$	GDP per Job, \$	GDP per hour, \$	GDP per unit of Capital Stock, \$	GDP per hour, Index, 1997=100
	A	B	(C*1000/52)/B	C	D	A/B*1000	A/C	A/D	E
1961	245,230	6,483	39.25	13,231	389,132	37,829	18.53	0.630	na
1962	262,382	6,680	39.27	13,642	405,258	39,279	19.23	0.647	na
1963	276,306	6,844	38.95	13,863	422,184	40,369	19.93	0.654	na
1964	294,196	7,094	38.78	14,305	443,406	41,472	20.57	0.663	na
1965	312,930	7,357	38.47	14,718	469,276	42,532	21.26	0.667	na
1966	333,724	7,753	38.18	15,393	500,706	43,047	21.68	0.667	na
1967	343,454	7,980	38.03	15,781	529,502	43,037	21.76	0.649	na
1968	360,214	8,117	37.36	15,768	554,866	44,376	22.85	0.649	na
1969	378,344	8,355	37.04	16,093	579,808	45,286	23.51	0.653	na
1970	389,809	8,422	36.69	16,066	605,249	46,286	24.26	0.644	na
1971	405,860	8,593	36.40	16,264	631,348	47,232	24.95	0.643	na
1972	427,962	8,822	36.21	16,610	657,204	48,512	25.76	0.651	na
1973	457,766	9,233	36.07	17,317	686,617	49,578	26.43	0.667	na
1974	474,663	9,595	35.90	17,912	718,473	49,469	26.50	0.661	na
1975	483,316	9,743	35.52	17,998	752,430	49,608	26.85	0.642	na
1976	508,445	9,882	35.34	18,158	784,002	51,452	28.00	0.649	na
1977	526,028	10,055	34.98	18,291	815,171	52,313	28.76	0.645	na
1978	546,825	10,341	35.04	18,844	847,121	52,880	29.02	0.646	na
1979	567,631	10,799	34.91	19,602	884,323	52,564	28.96	0.642	na
1980	579,907	11,145	34.34	19,903	928,157	52,032	29.14	0.625	na
1981	600,253	11,487	34.32	20,498	981,735	52,254	29.28	0.611	81.8
1982	583,089	11,131	33.88	19,611	1,020,262	52,384	29.73	0.572	83.1
1983	598,941	11,211	33.72	19,660	1,051,160	53,423	30.46	0.570	85.1
1984	633,756	11,487	33.82	20,203	1,081,440	55,170	31.37	0.586	87.6
1985	664,059	11,851	33.94	20,917	1,114,723	56,036	31.75	0.596	88.6
1986	680,144	12,214	33.93	21,552	1,145,455	55,687	31.56	0.594	88.1
1987	709,058	12,591	34.15	22,360	1,180,193	56,315	31.71	0.601	88.6
1988	744,333	13,024	34.23	23,179	1,223,011	57,151	32.11	0.609	89.7
1989	763,837	13,342	34.07	23,635	1,267,856	57,251	32.32	0.602	90.3
1990	765,311	13,422	33.89	23,654	1,307,457	57,018	32.35	0.585	90.3
1991	749,294	13,171	33.52	22,957	1,340,463	56,891	32.64	0.559	91.1
1992	755,848	13,080	33.50	22,785	1,366,765	57,787	33.17	0.553	92.7
1993	773,528	13,227	33.51	23,050	1,389,892	58,483	33.56	0.557	93.8
1994	810,695	13,478	33.64	23,580	1,419,778	60,149	34.38	0.571	96.0
1995	833,456	13,698	33.61	23,937	1,449,862	60,844	34.82	0.575	97.3
1996	846,952	13,834	33.83	24,338	1,480,517	61,221	34.80	0.572	97.2
1997	882,733	13,971	33.93	24,652	1,523,612	63,185	35.81	0.579	100.0
1998	918,910	14,285	33.94	25,210	1,566,995	64,326	36.45	0.586	101.8
1999	969,750	14,676	34.01	25,954	1,613,813	66,077	37.36	0.601	104.4
2000	1,020,488	15,023	33.97	26,534	1,659,594	67,929	38.46	0.615	107.4
2001	1,038,702	15,188	33.85	26,735	1,701,928	68,388	38.85	0.610	108.5
2002	1,069,282	15,559	33.52	27,121	1,736,676	68,726	39.43	0.616	110.2
2003	1,088,773	15,881	33.33	27,523	1,777,272	68,559	39.56	0.613	110.6
2004	1,124,688	16,176	33.68	28,327	1,822,098	69,527	39.70	0.617	111.0
2005	1,157,705	16,438	33.39	28,543	1,873,060	70,430	40.56	0.618	113.4
Average annual rates of growth									
61-73	5.34	2.99	-0.70	2.27	4.85	2.28	3.00	0.47	n.a
73-81	3.45	2.77	-0.62	2.13	4.57	0.66	1.29	-1.08	n.a
81-89	3.06	1.89	-0.09	1.80	3.25	1.15	1.24	-0.18	1.24
89-00	2.67	1.08	-0.03	1.06	2.48	1.57	1.59	0.19	1.59
89-96	1.49	0.52	-0.10	0.42	2.24	0.96	1.06	-0.74	1.07
96-05	3.53	1.93	-0.14	1.79	2.65	1.57	1.72	0.86	1.73
89-05	2.63	1.31	-0.12	1.19	2.47	1.30	1.43	0.16	1.44
96-00	4.77	2.08	0.10	2.18	2.90	2.63	2.53	1.82	2.53
00-05	2.56	1.82	-0.34	1.47	2.45	0.73	1.07	0.10	1.09

Sources: Column A - Statistics Canada, GDP Data, see Table 1; Columns B and C - Productivity Program Database, based primarily on the Labour Force Survey, with adjustments from the Survey of Employment, Payrolls and Hours, and other administrative sources - CANSIM II series v15900147, linked to V29509277 between 1981 and 1997 and to v716374 before 1981 and v15900411 linked to v29509279 between 1981 and 1997 and to v716818 before 1981; Column D - CANSIM II v4419841; Column E - CANSIM II v29509280 Current as of July 5, 2006. Real GDP and capital stock data are in chained 1997 dollars.

**Table 4A: Productivity in the Total Economy, Canada**  
annual rate of change

Year	GDP at market prices, millions 1997 \$	Number of Jobs, thous.	Actual hours per week per job	Total hours actually worked, mill.	Geom. End-Year Net Capital Stock, mil 1997\$	GDP per Job, \$	GDP per hour, \$	GDP per unit of Capital Stock, \$	GDP per hour, Index, 1997=100
1961									
1962	6.99	3.04	0.06	3.10	4.14	3.83	3.78	2.74	na
1963	5.31	2.46	-0.82	1.63	4.18	2.77	3.62	1.08	na
1964	6.47	3.64	-0.44	3.19	5.03	2.73	3.18	1.38	na
1965	6.37	3.72	-0.80	2.89	5.83	2.56	3.39	0.50	na
1966	6.64	5.37	-0.74	4.59	6.70	1.21	1.97	-0.05	na
1967	2.92	2.94	-0.41	2.52	5.75	-0.02	0.39	-2.68	na
1968	4.88	1.72	-1.77	-0.08	4.79	3.11	4.97	0.09	na
1969	5.03	2.92	-0.84	2.06	4.50	2.05	2.91	0.51	na
1970	3.03	0.80	-0.96	-0.16	4.39	2.21	3.20	-1.30	na
1971	4.12	2.03	-0.79	1.23	4.31	2.04	2.85	-0.19	na
1972	5.45	2.66	-0.52	2.13	4.10	2.71	3.25	1.30	na
1973	6.96	4.66	-0.39	4.26	4.48	2.20	2.60	2.38	na
1974	3.69	3.92	-0.47	3.43	4.64	-0.22	0.25	-0.91	na
1975	1.82	1.54	-1.05	0.48	4.73	0.28	1.34	-2.77	na
1976	5.20	1.43	-0.53	0.89	4.20	3.72	4.27	0.96	na
1977	3.46	1.76	-1.00	0.73	3.98	1.67	2.71	-0.50	na
1978	3.95	2.84	0.18	3.02	3.92	1.08	0.91	0.03	na
1979	3.80	4.43	-0.39	4.02	4.39	-0.60	-0.21	-0.56	na
1980	2.16	3.21	-1.62	1.54	4.96	-1.01	0.62	-2.66	na
1981	3.51	3.07	-0.08	2.99	5.77	0.43	0.50	-2.14	na
1982	-2.86	-3.10	-1.27	-4.33	3.92	0.25	1.54	-6.53	1.59
1983	2.72	0.72	-0.47	0.25	3.03	1.98	2.46	-0.30	2.41
1984	5.81	2.46	0.29	2.76	2.88	3.27	2.97	2.85	2.88
1985	4.78	3.16	0.37	3.54	3.08	1.57	1.20	1.65	1.17
1986	2.42	3.07	-0.03	3.03	2.76	-0.62	-0.59	-0.33	-0.54
1987	4.25	3.09	0.64	3.75	3.03	1.13	0.49	1.18	0.51
1988	4.97	3.44	0.22	3.67	3.63	1.48	1.26	1.30	1.27
1989	2.62	2.44	-0.46	1.97	3.67	0.18	0.64	-1.01	0.64
1990	0.19	0.60	-0.52	0.08	3.12	-0.41	0.11	-2.84	0.08
1991	-2.09	-1.87	-1.09	-2.94	2.52	-0.22	0.88	-4.50	0.89
1992	0.87	-0.69	-0.06	-0.75	1.96	1.58	1.64	-1.07	1.67
1993	2.34	1.12	0.04	1.16	1.69	1.20	1.16	0.64	1.19
1994	4.80	1.90	0.39	2.30	2.15	2.85	2.45	2.60	2.40
1995	2.81	1.63	-0.11	1.52	2.12	1.16	1.27	0.67	1.30
1996	1.62	0.99	0.67	1.67	2.11	0.62	-0.05	-0.48	-0.05
1997	4.22	0.98	0.30	1.29	2.91	3.21	2.90	1.28	2.88
1998	4.10	2.25	0.01	2.26	2.85	1.81	1.79	1.22	1.77
1999	5.53	2.74	0.21	2.95	2.99	2.72	2.51	2.47	2.53
2000	5.23	2.36	-0.13	2.23	2.84	2.80	2.93	2.33	2.92
2001	1.78	1.10	-0.34	0.76	2.55	0.67	1.02	-0.75	1.05
2002	2.94	2.44	-0.97	1.44	2.04	0.50	1.48	0.88	1.57
2003	1.82	2.07	-0.58	1.48	2.34	-0.24	0.34	-0.50	0.32
2004	3.30	1.86	1.04	2.92	2.52	1.41	0.37	0.76	0.41
2005	2.94	1.62	-0.84	0.76	2.80	1.30	2.16	0.14	2.12



**Table 5: Productivity in the Total Economy, United States**

Year	GDP at market prices, billions 2000 \$	Number of Jobs, mill.	Actual hours per week per job	Total hours actually worked, bill.	End-Year Net Capital Stock, bill. 2000\$	GDP per Job, \$	GDP per hour, \$	GDP per unit of Capital Stock, \$
	A	B	(C*1000/52)/B	C	D	A/B*1000	A/C	A/D
1961	2,560.0	72.00	35.72	133.73	5,033	35,554	19.14	0.509
1962	2,715.2	73.46	35.90	137.11	5,208	36,964	19.80	0.521
1963	2,834.0	74.07	35.88	138.21	5,386	38,262	20.51	0.526
1964	2,998.6	75.61	36.06	141.79	5,591	39,659	21.15	0.536
1965	3,191.1	77.79	36.26	146.68	5,837	41,024	21.76	0.547
1966	3,399.1	80.72	36.17	151.84	6,119	42,110	22.39	0.556
1967	3,484.6	82.60	35.75	153.56	6,382	42,189	22.69	0.546
1968	3,652.7	84.56	35.56	156.34	6,638	43,198	23.36	0.550
1969	3,765.4	86.91	35.44	160.14	6,895	43,327	23.51	0.546
1970	3,771.9	86.73	34.89	157.35	7,118	43,490	23.97	0.530
1971	3,898.6	86.87	34.68	156.65	7,307	44,881	24.89	0.534
1972	4,105.0	88.98	34.79	160.96	7,515	46,133	25.50	0.546
1973	4,341.5	92.17	34.65	166.09	7,769	47,102	26.14	0.559
1974	4,319.6	93.55	34.27	166.70	8,011	46,173	25.91	0.539
1975	4,311.2	91.98	33.86	161.97	8,191	46,872	26.62	0.526
1976	4,540.9	94.45	33.93	166.64	8,377	48,079	27.25	0.542
1977	4,750.5	98.07	33.82	172.49	8,591	48,442	27.54	0.553
1978	5,015.0	102.78	33.79	180.60	8,868	48,792	27.77	0.566
1979	5,173.4	106.07	33.62	185.46	9,183	48,773	27.90	0.563
1980	5,161.7	106.69	33.34	184.96	9,468	48,382	27.91	0.545
1981	5,291.7	107.55	33.14	185.31	9,760	49,204	28.56	0.542
1982	5,189.3	106.20	33.06	182.57	9,989	48,863	28.42	0.519
1983	5,423.8	107.09	33.37	185.84	10,197	50,649	29.19	0.532
1984	5,813.6	111.49	33.67	195.19	10,507	52,143	29.78	0.553
1985	6,053.7	114.27	33.60	199.62	10,853	52,979	30.33	0.558
1986	6,263.6	116.27	33.37	201.79	11,153	53,870	31.04	0.562
1987	6,475.1	119.35	33.37	207.09	11,438	54,254	31.27	0.566
1988	6,742.7	122.90	33.36	213.23	11,724	54,862	31.62	0.575
1989	6,981.4	125.68	33.53	219.14	12,015	55,548	31.86	0.581
1990	7,112.5	127.20	33.22	219.75	12,307	55,917	32.37	0.578
1991	7,100.5	126.26	33.02	216.83	12,529	56,235	32.75	0.567
1992	7,336.6	126.09	33.09	216.98	12,735	58,186	33.81	0.576
1993	7,532.7	128.29	33.28	222.01	12,977	58,717	33.93	0.580
1994	7,835.5	131.60	33.45	228.90	13,235	59,540	34.23	0.592
1995	8,031.7	134.65	33.49	234.47	13,556	59,650	34.26	0.592
1996	8,328.9	136.99	33.32	237.35	13,926	60,799	35.09	0.598
1997	8,703.5	140.04	33.54	244.24	14,336	62,152	35.64	0.607
1998	9,066.9	142.86	33.59	249.49	14,788	63,469	36.34	0.613
1999	9,470.3	145.28	33.67	254.37	15,272	65,186	37.23	0.620
2000	9,817.0	147.84	33.51	257.60	15,782	66,403	38.11	0.622
2001	9,890.7	147.48	33.18	254.46	16,170	67,063	38.87	0.612
2002	10,048.8	145.78	33.13	251.11	16,455	68,930	40.02	0.611
2003	10,320.6	145.96	32.97	250.27	16,736	70,711	41.24	0.617
2004	10,755.7	147.64	32.99	253.25	17,082	72,851	42.47	0.630
2005	11,134.6	149.95	32.96	257.02	na	74,254	43.32	na
Average annual rates of growth								
61-73	4.50	2.08	-0.25	1.82	3.68	2.37	2.63	0.79
73-81	2.50	1.95	-0.56	1.38	2.89	0.55	1.11	-0.38
81-89	3.52	1.97	0.15	2.12	2.63	1.53	1.38	0.87
89-00	3.15	1.49	-0.01	1.48	2.51	1.64	1.64	0.62
89-96	2.55	1.24	-0.09	1.15	2.13	1.30	1.39	0.41
96-05	3.28	1.01	-0.12	0.89	n.a.	2.25	2.37	n.a.
89-05	2.96	1.11	-0.11	1.00	n.a.	1.83	1.94	n.a.
96-00	4.20	1.92	0.14	2.07	3.18	2.23	2.08	0.99
00-05	2.55	0.28	-0.33	-0.05	n.a.	2.26	2.60	n.a.

Sources:  
[A]: Bureau of Economic Analysis, see Table 2;  
[B]-[C]: Bureau of Labor Statistics unpublished data, based primarily on the Current Employment Statistics establishment survey, with adjustments from the household-based Current Population Survey and other sources; data reflect the BLS news release of Feb 2, 2006.  
[D]: chained dollar estimates of private plus government non-residential net stocks for 1990-2004 are from Fixed Assets Table 9.1. Values for 1961-1989 are based on the annual growth rates of the corresponding chain-type quantity indexes from FA Table 1.2. Current as of July 5, 2006. Real GDP and capital stock data are expressed in chained 2000 dollars.

**Table 5A: Productivity in the Total Economy, United States**  
annual rate of change

Year	GDP at market prices, billions 2000 \$	Number of Jobs, mill.	Actual hours per week per job	Total hours actually worked, bill.	End-Year Net Capital Stock, bill. 2000\$	GDP per Job, \$	GDP per hour, \$	GDP per unit of Capital Stock, \$
1961								
1962	6.06	2.02	0.50	2.53	3.47	3.97	3.45	2.50
1963	4.38	0.84	-0.04	0.80	3.42	3.51	3.55	0.92
1964	5.81	2.08	0.51	2.60	3.80	3.65	3.13	1.93
1965	6.42	2.88	0.55	3.44	4.39	3.44	2.88	1.94
1966	6.52	3.77	-0.24	3.52	4.83	2.65	2.90	1.61
1967	2.52	2.32	-1.17	1.13	4.31	0.19	1.37	-1.72
1968	4.82	2.38	-0.55	1.82	4.01	2.39	2.95	0.78
1969	3.09	2.78	-0.34	2.43	3.87	0.30	0.64	-0.75
1970	0.17	-0.20	-1.55	-1.75	3.23	0.38	1.95	-2.96
1971	3.36	0.16	-0.60	-0.44	2.65	3.20	3.82	0.69
1972	5.29	2.44	0.31	2.75	2.85	2.79	2.47	2.38
1973	5.76	3.58	-0.39	3.19	3.38	2.10	2.50	2.30
1974	-0.50	1.50	-1.11	0.37	3.12	-1.97	-0.87	-3.51
1975	-0.19	-1.68	-1.17	-2.84	2.24	1.51	2.72	-2.38
1976	5.33	2.68	0.19	2.88	2.27	2.57	2.38	2.99
1977	4.62	3.83	-0.31	3.51	2.55	0.76	1.07	2.01
1978	5.57	4.81	-0.10	4.70	3.23	0.72	0.83	2.26
1979	3.16	3.20	-0.49	2.69	3.55	-0.04	0.45	-0.38
1980	-0.23	0.58	-0.84	-0.27	3.11	-0.80	0.04	-3.23
1981	2.52	0.81	-0.61	0.19	3.08	1.70	2.32	-0.54
1982	-1.94	-1.25	-0.23	-1.48	2.35	-0.69	-0.46	-4.19
1983	4.52	0.83	0.95	1.79	2.08	3.66	2.68	2.39
1984	7.19	4.12	0.88	5.03	3.04	2.95	2.05	4.03
1985	4.13	2.49	-0.21	2.27	3.29	1.60	1.82	0.82
1986	3.47	1.76	-0.66	1.09	2.77	1.68	2.36	0.68
1987	3.38	2.64	-0.02	2.62	2.55	0.71	0.73	0.80
1988	4.13	2.98	-0.01	2.96	2.50	1.12	1.13	1.60
1989	3.54	2.26	0.50	2.77	2.48	1.25	0.75	1.03
1990	1.88	1.21	-0.92	0.28	2.43	0.66	1.60	-0.54
1991	-0.17	-0.73	-0.60	-1.33	1.80	0.57	1.18	-1.93
1992	3.33	-0.14	0.21	0.07	1.65	3.47	3.25	1.65
1993	2.67	1.74	0.56	2.32	1.90	0.91	0.35	0.76
1994	4.02	2.58	0.51	3.10	1.99	1.40	0.89	1.99
1995	2.50	2.31	0.12	2.43	2.42	0.19	0.07	0.08
1996	3.70	1.74	-0.50	1.23	2.73	1.93	2.44	0.94
1997	4.50	2.22	0.67	2.90	2.94	2.23	1.55	1.51
1998	4.18	2.01	0.13	2.15	3.15	2.12	1.98	0.99
1999	4.45	1.70	0.25	1.96	3.27	2.70	2.44	1.14
2000	3.66	1.76	-0.48	1.27	3.34	1.87	2.36	0.31
2001	0.75	-0.24	-0.98	-1.22	2.45	0.99	2.00	-1.66
2002	1.60	-1.15	-0.16	-1.32	1.76	2.78	2.95	-0.16
2003	2.70	0.12	-0.45	-0.34	1.71	2.58	3.05	0.98
2004	4.22	1.15	0.04	1.19	2.07	3.03	2.99	2.11
2005	3.52	1.57	-0.08	1.49	na	1.93	2.01	na

Source: Table 5.

**Table 6: Annual Indexes of Productivity in the Business Sector in Canada and the United States, 1992=100**

Year	Canada					United States				
	Output	Employment	Hours Worked	Output per Worker	Output per Hour	Output	Employment	Hours Worked	Output per Worker	Output per Hour
	A	B	C	D=A/B	E	F	G	H	I	J
1946	16.04	45.59	59.97	35.19	26.81	n.a	n.a	n.a	n.a	n.a
1947	17.01	47.60	61.18	35.74	27.97	20.4	55.7	63.4	36.7	32.2
1948	17.69	48.40	62.18	36.56	28.55	21.5	56.3	63.8	38.2	33.7
1949	18.18	49.00	62.59	37.10	29.03	21.3	55.1	61.8	38.7	34.5
1950	19.44	49.00	61.18	39.68	31.94	23.4	55.6	62.6	42.0	37.3
1951	21.00	50.21	62.28	41.82	33.78	24.9	57.1	64.6	43.6	38.5
1952	22.55	50.61	62.48	44.56	36.20	25.7	57.3	64.8	44.8	39.6
1953	23.43	50.81	62.69	46.11	37.45	26.9	58.1	65.6	46.3	41.0
1954	22.94	50.51	61.98	45.42	37.07	26.6	56.7	63.4	46.8	41.9
1955	25.47	51.11	62.28	49.83	41.13	28.7	58.3	65.8	49.2	43.6
1956	27.80	53.12	64.50	52.34	43.26	29.1	59.5	66.8	49.0	43.6
1957	27.90	53.92	64.80	51.74	43.16	29.6	59.4	65.8	49.9	45.0
1958	28.29	52.31	62.38	54.07	45.49	29.1	57.1	62.9	50.9	46.3
1959	29.75	53.22	63.29	55.90	47.13	31.4	58.9	65.5	53.4	48.0
1960	30.43	53.02	62.59	57.39	48.68	32.0	59.2	65.6	54.1	48.9
1961	31.11	53.22	62.08	58.45	50.13	32.7	58.6	64.6	55.8	50.6
1962	33.25	54.52	63.79	60.98	52.17	34.8	59.3	65.8	58.6	52.9
1963	35.19	55.73	64.70	63.15	54.49	36.4	59.6	66.2	61.0	55.0
1964	37.62	57.64	66.61	65.27	56.62	38.7	60.8	68.1	63.7	56.8
1965	40.44	59.95	68.72	67.46	58.94	41.4	62.5	70.4	66.3	58.8
1966	43.26	63.16	71.94	68.49	60.29	44.2	64.3	72.3	68.8	61.2
1967	44.23	64.36	72.85	68.72	60.78	45.1	65.2	72.1	69.1	62.5
1968	46.66	64.77	72.24	72.05	64.75	47.3	66.5	73.2	71.2	64.7
1969	49.00	66.37	73.35	73.82	66.88	48.8	68.6	75.0	71.1	65.0
1970	50.16	66.17	72.45	75.81	69.30	48.7	68.4	73.5	71.3	66.3
1971	52.69	67.28	73.35	78.32	72.01	50.6	68.5	73.3	73.9	69.0
1972	55.99	68.78	74.56	81.41	75.20	53.9	70.5	75.6	76.4	71.2
1973	60.66	72.30	78.08	83.91	77.91	57.6	73.5	78.5	78.4	73.4
1974	62.41	75.11	80.70	83.09	77.43	56.8	74.7	78.7	76.1	72.3
1975	62.51	75.71	80.39	82.56	77.91	56.3	72.4	75.3	77.7	74.8
1976	66.79	76.61	81.00	87.17	82.65	60.0	74.7	77.8	80.3	77.1
1977	68.83	77.62	81.20	88.67	84.97	63.3	77.9	80.7	81.3	78.5
1978	71.16	79.83	83.72	89.14	85.17	67.3	82.2	84.9	81.9	79.3
1979	74.27	83.74	87.54	88.69	84.97	69.6	85.4	87.7	81.5	79.3
1980	75.83	86.46	88.85	87.71	85.46	68.8	85.6	87.0	80.4	79.2
1981	80.01	89.57	91.76	89.32	87.30	70.7	86.4	87.6	81.8	80.8
1982	76.73	85.58	86.61	89.66	88.65	68.6	85.0	85.6	80.7	80.1
1983	79.43	85.91	86.47	92.46	91.85	72.3	85.8	87.1	84.3	83.0
1984	84.89	88.38	89.36	96.05	95.04	78.6	90.1	92.2	87.2	85.2
1985	89.44	91.55	93.03	97.70	96.24	82.2	92.3	94.3	89.0	87.1
1986	91.84	94.61	96.08	97.08	95.67	85.3	93.9	95.1	90.8	89.7
1987	96.42	97.83	100.00	98.56	96.42	88.3	96.4	97.9	91.5	90.1
1988	100.97	101.49	103.98	99.49	97.18	92.1	99.3	100.6	92.7	91.5
1989	103.85	103.96	106.11	99.89	98.00	95.4	101.5	103.3	94.0	92.4
1990	103.13	104.02	105.60	99.14	97.78	96.9	102.2	102.7	94.8	94.4
1991	99.33	101.16	101.32	98.20	98.05	96.1	100.6	100.2	95.6	95.9
1992	100.00	100.00	100.00	100.00	100.00	100.0	100.0	100.0	100.0	100.0
1993	102.67	101.40	101.71	101.25	100.98	103.1	102.1	102.7	101.0	100.4
1994	108.95	104.10	104.96	104.66	103.90	108.2	105.6	106.8	102.5	101.3
1995	112.65	106.52	107.17	105.75	105.15	111.4	108.5	109.7	102.6	101.5
1996	115.05	108.37	109.89	106.16	104.79	116.5	110.9	111.5	105.0	104.5
1997	121.36	110.10	112.04	110.22	108.32	122.7	113.9	115.2	107.7	106.5
1998	127.52	113.18	115.07	112.66	110.83	128.6	116.2	117.5	110.6	109.4
1999	135.89	116.87	118.80	116.27	114.38	135.2	118.2	119.9	114.4	112.7
2000	144.05	120.04	121.96	120.01	118.26	140.5	120.3	121.2	116.8	115.9
2001	146.36	121.14	122.52	120.82	119.56	141.0	119.3	118.6	118.1	118.8
2002	150.82	124.42	124.48	121.22	121.21	143.1	116.7	115.7	122.6	123.6
2003	152.88	126.64	126.08	120.72	121.24	147.9	116.4	115.0	127.1	128.6
2004	157.95	128.85	129.92	122.59	121.51	154.9	117.9	116.4	131.4	133.1
2005	162.68	130.91	130.78	124.27	124.40	161.2	119.8	118.0	134.6	136.6
<b>Average Annual Growth Rates</b>										
47-73	5.01	1.62	0.94	3.34	4.02	4.07	1.07	0.83	2.97	3.22
73-81	3.52	2.71	2.04	0.79	1.43	2.59	2.04	1.37	0.54	1.20
81-89	3.31	1.88	1.83	1.41	1.46	3.81	2.03	2.08	1.75	1.70
89-00	3.02	1.32	1.27	1.68	1.72	3.58	1.56	1.47	1.99	2.08
89-96	1.47	0.59	0.50	0.87	0.96	2.89	1.27	1.10	1.60	1.77
96-05	3.92	2.12	1.95	1.76	1.92	3.67	0.86	0.64	2.79	3.02
89-05	2.84	1.45	1.32	1.37	1.50	3.33	1.04	0.84	2.27	2.47
96-00	5.78	2.59	2.64	3.11	3.07	4.80	2.05	2.11	2.69	2.63
00-05	2.46	1.75	1.41	0.70	1.02	2.78	-0.08	-0.53	2.87	3.33

Source:

data for Canada from Aggregate Productivity Measures, CANSIM II v1409154, v1409157, v1409155 and v1409153 for 1981-2005 converted to annual averages, linked to series v719180, v719402, v719846 and v720290 for previous years, and re-based to 1992=100.

Data for US from BLS series PRS84006043, PRS84006013, PRS84006033, PRS84006163 and PRS84006093. Current as of July 5, 2006.

Note: output per worker and output per hour series do not directly coincide with those published by Statistics Canada and BLS because they have been rebased and may differ due to rounding.

**Table 6A: Annual Productivity in the Business Sector in Canada and the United States**  
annual growth rates

Year	Canada					United States				
	Output	Employment	Hours Worked	Output per Worker	Output per Hour	Output	Employment	Hours Worked	Output per Worker	Output per Hour
1946										
1947	6.06	4.41	2.01	1.59	4.33					
1948	4.00	1.69	1.64	2.27	2.08	5.40	1.10	0.74	4.24	4.62
1949	2.75	1.24	0.65	1.48	1.69	-0.98	-2.21	-3.19	1.26	2.29
1950	6.95	0.00	-2.25	6.95	10.00	9.70	0.96	1.38	8.66	8.21
1951	8.00	2.46	1.81	5.41	5.76	6.48	2.60	3.19	3.77	3.18
1952	7.41	0.80	0.32	6.55	7.16	3.07	0.47	0.23	2.59	2.84
1953	3.88	0.40	0.32	3.47	3.48	4.86	1.40	1.25	3.41	3.56
1954	-2.07	-0.59	-1.12	-1.49	-1.03	-1.30	-2.45	-3.35	1.18	2.12
1955	11.02	1.19	0.49	9.71	10.97	8.01	2.89	3.71	4.98	4.14
1956	9.16	3.93	3.55	5.03	5.18	1.59	2.05	1.52	-0.45	0.07
1957	0.35	1.51	0.47	-1.15	-0.22	1.70	-0.23	-1.42	1.93	3.16
1958	1.39	-2.98	-3.73	4.51	5.38	-1.85	-3.78	-4.48	2.01	2.76
1959	5.15	1.73	1.45	3.37	3.62	8.13	3.08	4.16	4.89	3.80
1960	2.29	-0.38	-1.11	2.68	3.29	1.91	0.51	0.16	1.39	1.75
1961	2.24	0.38	-0.80	1.85	2.98	1.95	-1.05	-1.49	3.02	3.48
1962	6.88	2.45	2.76	4.32	4.05	6.45	1.26	1.79	5.12	4.58
1963	5.85	2.21	1.42	3.56	4.45	4.62	0.54	0.68	4.05	3.91
1964	6.91	3.42	2.95	3.37	3.91	6.37	1.86	2.88	4.43	3.38
1965	7.49	4.01	3.17	3.35	4.10	7.05	2.88	3.40	4.06	3.54
1966	6.97	5.36	4.69	1.53	2.30	6.77	2.93	2.60	3.73	4.06
1967	2.25	1.91	1.26	0.33	0.80	1.90	1.33	-0.28	0.56	2.19
1968	5.49	0.62	-0.83	4.84	6.53	4.97	1.99	1.50	2.91	3.41
1969	5.00	2.48	1.53	2.46	3.29	3.04	3.12	2.54	-0.07	0.49
1970	2.38	-0.30	-1.23	2.69	3.62	-0.03	-0.29	-1.98	0.25	1.99
1971	5.04	1.67	1.25	3.31	3.91	3.84	0.18	-0.26	3.65	4.12
1972	6.27	2.24	1.65	3.95	4.44	6.46	2.94	3.13	3.42	3.23
1973	8.33	5.11	4.72	3.07	3.60	6.98	4.30	3.82	2.58	3.04
1974	2.88	3.89	3.35	-0.97	-0.62	-1.39	1.53	0.18	-2.87	-1.57
1975	0.16	0.80	-0.37	-0.64	0.63	-0.97	-2.99	-4.33	2.08	3.51
1976	6.84	1.19	0.75	5.58	6.09	6.57	3.08	3.32	3.38	3.15
1977	3.06	1.31	0.25	1.72	2.81	5.60	4.33	3.84	1.22	1.70
1978	3.39	2.85	3.10	0.53	0.23	6.28	5.51	5.12	0.73	1.10
1979	4.37	4.91	4.57	-0.51	-0.23	3.36	3.88	3.38	-0.50	-0.02
1980	2.09	3.24	1.49	-1.11	0.57	-1.07	0.26	-0.88	-1.32	-0.19
1981	5.51	3.60	3.28	1.85	2.15	2.75	0.99	0.68	1.74	2.06
1982	-4.10	-4.46	-5.62	0.38	1.55	-3.01	-1.63	-2.25	-1.41	-0.78
1983	3.52	0.39	-0.16	3.12	3.61	5.38	0.88	1.75	4.46	3.56
1984	6.88	2.88	3.34	3.88	3.48	8.67	5.04	5.85	3.46	2.67
1985	5.36	3.58	4.11	1.72	1.25	4.63	2.48	2.32	2.09	2.25
1986	2.68	3.34	3.28	-0.64	-0.59	3.73	1.64	0.79	2.06	2.92
1987	4.99	3.40	4.08	1.53	0.79	3.52	2.72	2.99	0.77	0.51
1988	4.72	3.74	3.98	0.94	0.79	4.31	3.05	2.74	1.22	1.52
1989	2.85	2.44	2.05	0.40	0.84	3.65	2.16	2.64	1.47	0.99
1990	-0.70	0.05	-0.48	-0.75	-0.22	1.54	0.66	-0.58	0.88	2.14
1991	-3.68	-2.75	-4.06	-0.95	0.28	-0.79	-1.55	-2.36	0.77	1.61
1992	0.67	-1.14	-1.30	1.84	1.99	4.02	-0.57	-0.24	4.62	4.27
1993	2.67	1.40	1.71	1.25	0.98	3.10	2.11	2.71	0.98	0.39
1994	6.12	2.66	3.19	3.37	2.90	4.97	3.37	3.97	1.54	0.96
1995	3.40	2.33	2.11	1.05	1.20	2.91	2.81	2.76	0.10	0.14
1996	2.13	1.73	2.54	0.39	-0.33	4.59	2.20	1.59	2.34	2.95
1997	5.49	1.60	1.96	3.82	3.36	5.32	2.68	3.35	2.57	1.90
1998	5.07	2.80	2.70	2.21	2.33	4.83	2.07	1.99	2.70	2.79
1999	6.57	3.26	3.24	3.20	3.20	5.13	1.68	2.07	3.39	3.00
2000	6.01	2.71	2.66	3.21	3.39	3.93	1.77	1.06	2.12	2.84
2001	1.60	0.92	0.46	0.68	1.10	0.32	-0.81	-2.12	1.13	2.49
2002	3.05	2.70	1.60	0.33	1.38	1.51	-2.19	-2.43	3.78	4.03
2003	1.37	1.79	1.28	-0.42	0.02	3.38	-0.25	-0.66	3.64	4.06
2004	3.31	1.74	3.04	1.55	0.22	4.76	1.31	1.26	3.41	3.46
2005	3.00	1.60	0.67	1.37	2.39	4.03	1.59	1.38	2.40	2.61

**Table 6B: Quarterly Indexes of Productivity in the Business Sector in Canada and the United States, 1992Q1=100**

Quarter	Canada				United States					
	Output	Employment	Hours Worked	Output per Worker	Output per Hour	Output	Employment	Hours Worked	Output per Worker	Output per Hour
	A	B	C	D=A/B	E	F	G	H	I	J
1987Q1	94.99	95.72	97.54	99.24	97.48	88.19	95.68	97.53	92.17	90.42
1987Q2	96.09	97.04	99.00	99.03	97.15	89.32	96.41	98.14	92.64	91.01
1987Q3	97.68	98.02	100.33	99.65	97.37	90.01	97.08	98.75	92.73	91.15
1987Q4	99.27	99.34	101.56	99.93	97.92	91.75	97.87	99.76	93.75	91.97
1988Q1	100.85	100.33	102.57	100.52	98.47	92.08	98.52	99.82	93.46	92.24
1988Q2	101.34	100.88	103.57	100.46	97.92	93.50	99.59	101.20	93.89	92.39
1988Q3	101.71	101.21	103.91	100.50	98.14	93.94	99.97	101.40	93.96	92.64
1988Q4	102.44	102.31	104.24	100.13	98.47	95.23	100.76	102.57	94.52	92.84
1989Q1	103.79	103.40	105.13	100.37	98.90	96.29	101.54	103.54	94.83	93.00
1989Q2	104.52	103.40	105.69	101.08	99.12	96.87	101.71	103.81	95.24	93.31
1989Q3	104.88	103.95	106.03	100.90	99.12	97.56	101.91	104.18	95.74	93.65
1989Q4	104.76	103.84	105.92	100.89	99.12	97.72	102.29	104.16	95.54	93.82
1990Q1	105.25	104.17	105.80	101.04	99.78	98.91	102.75	104.27	96.27	94.86
1990Q2	104.27	104.06	105.58	100.20	99.01	99.03	102.83	103.65	96.31	95.55
1990Q3	103.42	103.51	105.02	99.91	98.58	98.82	102.44	102.85	96.47	96.08
1990Q4	102.08	103.07	104.35	99.03	98.03	97.68	102.12	102.51	95.65	95.29
1991Q1	99.76	100.66	101.12	99.10	98.80	96.85	101.41	101.44	95.51	95.48
1991Q2	99.51	101.10	101.00	98.43	98.58	97.62	101.00	100.82	96.66	96.84
1991Q3	100.12	101.10	101.00	99.03	99.23	98.16	100.78	100.73	97.41	97.45
1991Q4	100.37	100.55	100.56	99.82	99.89	98.70	100.59	100.54	98.12	98.17
1992Q1	100.00	100.00	100.00	100.00	100.00	100.00	100.00	100.00	100.00	100.00
1992Q2	100.37	99.56	99.44	100.81	100.99	101.12	100.21	100.53	100.91	100.58
1992Q3	100.73	99.45	99.33	101.29	101.64	102.27	100.41	100.69	101.86	101.57
1992Q4	101.34	99.78	99.67	101.57	101.75	103.70	100.86	101.35	102.82	102.32
1993Q1	102.08	100.44	100.45	101.63	101.75	103.64	101.53	102.07	102.07	101.54
1993Q2	102.69	100.66	101.12	102.01	101.64	104.30	102.22	103.20	102.04	101.07
1993Q3	103.42	101.43	101.79	101.96	101.75	104.96	102.72	103.68	102.19	101.24
1993Q4	105.01	101.87	101.90	103.08	103.18	106.82	103.46	104.53	103.25	102.20
1994Q1	106.84	101.98	102.46	104.77	104.49	108.18	104.31	105.29	103.71	102.74
1994Q2	109.04	103.18	103.91	105.67	105.15	109.85	105.43	107.15	104.20	102.52
1994Q3	110.62	104.50	105.36	105.86	105.15	110.45	106.70	108.38	103.52	101.92
1994Q4	111.97	105.49	106.47	106.14	105.37	112.08	107.32	109.07	104.44	102.76
1995Q1	113.68	106.04	106.58	107.20	106.79	112.32	108.20	109.81	103.80	102.28
1995Q2	113.19	105.82	106.25	106.96	106.68	112.49	108.76	109.97	103.44	102.29
1995Q3	112.82	106.26	106.70	106.18	105.81	113.71	109.21	110.96	104.13	102.49
1995Q4	113.68	106.70	107.48	106.54	105.91	114.85	109.49	111.00	104.90	103.47
1996Q1	114.04	107.57	109.49	106.01	104.38	115.90	110.19	110.86	105.18	104.55
1996Q2	114.77	108.01	109.49	106.26	105.04	118.09	110.87	111.66	106.51	105.76
1996Q3	116.36	108.34	109.60	107.40	106.35	119.26	111.58	112.46	106.88	106.05
1996Q4	117.83	108.23	109.26	108.86	108.00	120.95	112.58	113.79	107.43	106.29
1997Q1	119.54	108.23	109.26	110.44	109.42	121.99	113.52	115.10	107.47	105.99
1997Q2	121.25	109.00	110.94	111.23	109.42	124.21	114.05	115.72	108.92	107.34
1997Q3	123.08	110.65	112.05	111.23	109.97	126.05	114.48	116.27	110.11	108.41
1997Q4	124.54	111.20	114.17	112.00	109.20	127.14	115.12	116.73	110.45	108.92
1998Q1	126.62	111.31	113.62	113.76	111.61	128.75	115.69	117.34	111.29	109.72
1998Q2	127.11	112.51	114.17	112.97	111.50	129.64	116.46	117.94	111.31	109.92
1998Q3	128.57	113.39	115.07	113.39	111.94	131.32	116.98	118.10	112.26	111.20
1998Q4	130.89	114.16	115.63	114.66	113.14	133.80	117.50	119.65	113.87	111.83
1999Q1	133.58	115.15	116.52	116.00	114.68	135.03	117.49	119.47	114.93	113.02
1999Q2	135.53	115.92	118.19	116.92	114.79	136.30	118.41	120.40	115.12	113.21
1999Q3	137.73	117.23	119.20	117.48	115.66	138.10	118.96	121.22	116.09	113.93
1999Q4	140.05	117.78	119.42	118.90	117.42	140.92	119.62	121.72	117.81	115.77
2000Q1	142.61	118.77	120.31	120.07	118.84	141.04	120.42	122.30	117.13	115.32
2000Q2	144.32	119.43	121.09	120.84	119.39	143.60	120.81	122.17	118.87	117.54
2000Q3	146.28	119.76	121.88	122.14	120.26	143.31	120.94	122.25	118.50	117.24
2000Q4	146.52	120.75	122.66	121.35	119.72	144.03	120.71	121.56	119.32	118.49
2001Q1	147.13	121.19	122.77	121.41	120.04	143.62	121.07	121.42	118.62	118.29
2001Q2	147.13	121.19	122.99	121.41	119.82	143.92	120.20	120.07	119.73	119.86
2001Q3	146.76	120.20	121.32	122.10	121.25	142.81	119.39	118.67	119.62	120.34
2001Q4	147.99	120.53	121.09	122.78	122.34	143.45	118.32	117.39	121.24	122.20
2002Q1	150.06	122.28	122.88	122.72	122.34	144.38	117.27	116.56	123.11	123.87
2002Q2	150.92	123.49	123.77	122.21	122.12	145.12	117.13	116.60	123.90	124.45
2002Q3	152.50	124.70	124.22	122.30	122.89	146.39	116.98	116.33	125.15	125.84
2002Q4	153.48	125.69	125.11	122.11	122.78	146.56	117.12	116.45	125.14	125.85
2003Q1	153.85	126.02	125.33	122.09	122.78	147.19	116.96	115.90	125.85	127.00
2003Q2	152.87	125.58	124.78	121.73	122.56	148.96	116.39	115.17	127.98	129.34
2003Q3	153.60	126.13	125.45	121.79	122.56	152.50	116.77	115.55	130.60	131.98
2003Q4	154.95	127.33	126.79	121.69	122.34	153.47	117.19	116.27	130.96	132.00
2004Q1	156.78	127.33	127.90	123.12	122.67	155.33	117.47	116.63	132.23	133.19
2004Q2	158.24	128.21	130.25	123.42	121.47	156.87	118.10	116.73	132.83	134.39
2004Q3	159.95	128.98	129.91	124.01	123.11	158.57	118.70	117.54	133.59	134.91
2004Q4	160.68	129.31	129.58	124.26	124.10	159.98	119.14	117.80	134.28	135.80
2005Q1	161.78	129.86	129.80	124.58	124.86	161.70	119.77	118.08	135.01	136.94
2005Q2	163.00	130.63	130.36	124.79	125.19	163.29	120.29	118.90	135.74	137.33
2005Q3	164.47	130.74	130.36	125.80	126.18	165.21	120.26	118.86	137.38	138.99
2005Q4	165.45	130.85	130.58	126.44	126.83	165.95	120.60	119.33	137.61	139.07
2006Q1	166.91	131.39	131.03	127.03	127.49	168.55	121.39	120.05	138.85	140.41
<b>Average Annual Growth Rates</b>										
89-00	3.02	1.32	1.27	1.68	1.72	3.58	1.56	1.47	1.99	2.08
89-96	1.47	0.59	0.50	0.87	0.96	2.89	1.27	1.10	1.59	1.77
96-05	3.92	2.12	1.95	1.76	1.92	3.67	0.86	0.64	2.79	3.02
89-05	2.84	1.45	1.32	1.37	1.50	3.33	1.04	0.84	2.27	2.47
96-00	5.78	2.59	2.64	3.11	3.07	4.80	2.05	2.13	2.69	2.61
00-05	2.46	1.75	1.41	0.70	1.02	2.78	-0.08	-0.54	2.87	3.34

Source: data for Canada from Aggregate Productivity Measures, CANSIM II v1409154, v1409157, v1409155 and v1409153.

Data for US from BLS series PRS84006043, PRS84006013, PRS84006033, PRS84006163 and PRS84006093. Current as of July 5, 2006.

All series re-indexed to 1992Q1=100. Average annual growth rates refer to the four-quarter averages for the respective years.

Note: series do not directly coincide with those published by Statistics Canada and the BLS due to re-indexing and rounding.

**Table 6C: Quarterly Productivity in the Business Sector in Canada and the United States**  
year-over-year rates of change

Quarter	Canada					United States				
	Output	Employment	Hours Worked	Output per Worker	Output per Hour	Output	Employment	Hours Worked	Output per Worker	Output per Hour
1987Q1										
1987Q2										
1987Q3										
1987Q4										
1988Q1	6.17	4.82	5.15	1.29	1.01	4.41	2.98	2.35	1.39	2.01
1988Q2	5.46	3.96	4.62	1.45	0.79	4.69	3.30	3.12	1.34	1.52
1988Q3	4.13	3.25	3.56	0.85	0.79	4.36	2.98	2.68	1.33	1.64
1988Q4	3.20	2.98	2.64	0.21	0.56	3.80	2.95	2.82	0.82	0.95
1989Q1	2.91	3.06	2.50	-0.15	0.44	4.58	3.07	3.72	1.47	0.83
1989Q2	3.13	2.50	2.05	0.61	1.23	3.60	2.12	2.58	1.45	0.99
1989Q3	3.12	2.71	2.04	0.40	1.00	3.86	1.93	2.74	1.89	1.09
1989Q4	2.26	1.50	1.61	0.75	0.67	2.62	1.52	1.55	1.08	1.05
1990Q1	1.41	0.74	0.64	0.66	0.89	2.72	1.19	0.71	1.52	2.00
1990Q2	-0.23	0.64	-0.11	-0.87	-0.11	2.24	1.10	-0.16	1.12	2.40
1990Q3	-1.40	-0.42	-0.95	-0.98	-0.55	1.28	0.52	-1.28	0.76	2.60
1990Q4	-2.56	-0.74	-1.48	-1.84	-1.10	-0.04	-0.16	-1.59	0.12	1.57
1991Q1	-5.22	-3.37	-4.43	-1.91	-0.99	-2.08	-1.30	-2.71	-0.79	0.65
1991Q2	-4.57	-2.85	-4.33	-1.77	-0.44	-1.42	-1.78	-2.73	0.36	1.34
1991Q3	-3.19	-2.33	-3.83	-0.88	0.67	-0.66	-1.62	-2.06	0.97	1.43
1991Q4	-1.67	-2.45	-3.64	0.79	1.90	1.04	-1.50	-1.92	2.58	3.02
1992Q1	0.24	-0.65	-1.10	0.91	1.22	3.25	-1.39	-1.42	4.70	4.74
1992Q2	0.86	-1.52	-1.55	2.42	2.44	3.58	-0.79	-0.28	4.40	3.87
1992Q3	0.61	-1.63	-1.66	2.28	2.43	4.19	-0.36	-0.04	4.57	4.23
1992Q4	0.97	-0.76	-0.89	1.75	1.86	5.06	0.26	0.80	4.78	4.22
1993Q1	2.08	0.44	0.45	1.63	1.75	3.64	1.53	2.07	2.07	1.54
1993Q2	2.31	1.10	1.68	1.20	0.65	3.15	2.01	2.65	1.12	0.49
1993Q3	2.67	1.99	2.47	0.67	0.11	2.63	2.30	2.97	0.32	-0.33
1993Q4	3.61	2.09	2.24	1.49	1.40	3.01	2.58	3.13	0.42	-0.12
1994Q1	4.67	1.53	2.00	3.09	2.69	4.38	2.74	3.16	1.60	1.19
1994Q2	6.18	2.51	2.76	3.59	3.45	5.32	3.14	3.83	2.12	1.43
1994Q3	6.97	3.03	3.51	3.82	3.34	5.23	3.88	4.53	1.30	0.67
1994Q4	6.63	3.56	4.49	2.97	2.12	4.92	3.73	4.34	1.15	0.56
1995Q1	6.40	3.98	4.03	2.32	2.20	3.83	3.73	4.29	0.09	-0.45
1995Q2	3.81	2.55	2.26	1.22	1.46	2.40	3.15	2.63	-0.73	-0.22
1995Q3	1.99	1.68	1.27	0.30	0.62	2.95	2.35	2.38	0.59	0.56
1995Q4	1.53	1.14	0.94	0.38	0.52	2.47	2.02	1.77	0.44	0.69
1996Q1	0.32	1.45	2.72	-1.11	-2.26	3.19	1.84	0.95	1.33	2.22
1996Q2	1.40	2.07	3.05	-0.66	-1.54	4.98	1.95	1.54	2.98	3.39
1996Q3	3.14	1.96	2.72	1.15	0.52	4.87	2.17	1.35	2.64	3.47
1996Q4	3.65	1.44	1.66	2.18	1.96	5.31	2.83	2.52	2.41	2.72
1997Q1	4.82	0.61	-0.20	4.18	4.83	5.25	3.02	3.82	2.17	1.38
1997Q2	5.64	0.91	1.33	4.68	4.17	5.18	2.86	3.63	2.26	1.50
1997Q3	5.77	2.13	2.24	3.57	3.40	5.70	2.59	3.39	3.03	2.23
1997Q4	5.70	2.74	4.49	2.88	1.12	5.12	2.25	2.58	2.81	2.48
1998Q1	5.92	2.84	3.98	3.00	2.00	5.54	1.92	1.95	3.55	3.52
1998Q2	4.83	3.22	2.92	1.56	1.90	4.36	2.12	1.92	2.20	2.40
1998Q3	4.46	2.48	2.69	1.94	1.79	4.18	2.19	1.58	1.95	2.57
1998Q4	5.10	2.67	1.27	2.37	3.61	5.24	2.07	2.50	3.10	2.67
1999Q1	5.50	3.45	2.55	1.98	2.75	4.88	1.55	1.81	3.27	3.01
1999Q2	6.63	3.02	3.52	3.50	2.95	5.14	1.67	2.09	3.42	2.99
1999Q3	7.12	3.39	3.59	3.61	3.33	5.16	1.69	2.64	3.41	2.46
1999Q4	7.00	3.17	3.28	3.71	3.78	5.32	1.80	1.73	3.46	3.52
2000Q1	6.76	3.15	3.26	3.51	3.63	4.45	2.49	2.37	1.91	2.03
2000Q2	6.49	3.03	2.46	3.35	4.01	5.35	2.03	1.47	3.26	3.83
2000Q3	6.21	2.15	2.25	3.97	3.98	3.77	1.67	0.85	2.07	2.90
2000Q4	4.62	2.52	2.71	2.05	1.96	2.21	0.92	-0.13	1.28	2.34
2001Q1	3.17	2.03	2.04	1.11	1.01	1.83	0.54	-0.73	1.28	2.57
2001Q2	1.95	1.47	1.57	0.47	0.37	0.22	-0.50	-1.72	0.73	1.97
2001Q3	0.33	0.37	-0.46	-0.03	0.82	-0.35	-1.28	-2.93	0.94	2.65
2001Q4	1.00	-0.18	-1.27	1.18	2.20	-0.40	-1.98	-3.43	1.61	3.14
2002Q1	1.99	0.91	0.09	1.08	1.92	0.53	-3.14	-4.00	3.78	4.72
2002Q2	2.57	1.90	0.64	0.66	1.92	0.83	-2.56	-2.89	3.48	3.83
2002Q3	3.91	3.74	2.39	0.16	1.36	2.51	-2.02	-1.97	4.62	4.57
2002Q4	3.71	4.28	3.32	-0.54	0.36	2.17	-1.02	-0.79	3.22	2.98
2003Q1	2.52	3.05	2.00	-0.51	0.36	1.95	-0.26	-0.57	2.22	2.53
2003Q2	1.29	1.69	0.81	-0.39	0.36	2.65	-0.63	-1.23	3.29	3.92
2003Q3	0.72	1.14	0.99	-0.42	-0.27	4.17	-0.18	-0.68	4.36	4.88
2003Q4	0.95	1.31	1.34	-0.35	-0.36	4.72	0.06	-0.16	4.66	4.88
2004Q1	1.90	1.05	2.05	0.85	-0.09	5.53	0.43	0.63	5.07	4.87
2004Q2	3.51	2.10	4.38	1.39	-0.89	5.31	1.46	1.35	3.79	3.91
2004Q3	4.13	2.26	3.56	1.83	0.45	3.98	1.66	1.72	2.29	2.22
2004Q4	3.70	1.55	2.20	2.12	1.43	4.24	1.67	1.32	2.53	2.88
2005Q1	3.19	1.98	1.48	1.19	1.79	4.10	1.96	1.24	2.10	2.82
2005Q2	3.01	1.88	0.09	1.10	3.07	4.09	1.86	1.86	2.19	2.19
2005Q3	2.82	1.36	0.34	1.44	2.49	4.19	1.31	1.13	2.84	3.02
2005Q4	2.96	1.19	0.78	1.75	2.21	3.73	1.22	1.29	2.48	2.41
2006Q1	3.17	1.18	0.95	1.96	2.11	4.24	1.35	1.67	2.85	2.53

Note: growth rates do not directly coincide with those reported by BLS because BLS calculates growth rates from source data rather than index numbers.

**Table 6D: Quarterly Productivity in the Business Sector in Canada and the United States**  
**quarter-to-quarter compound annualized growth rates**

Quarter	Canada			United States						
	Output	Employment	Hours Worked	Output per Worker	Output per Hour	Output	Employment	Hours Worked	Output per Worker	Output per Hour
1987Q1										
1987Q2	4.71	5.62	6.08	-0.86	-1.34	5.24	3.11	2.51	2.06	2.66
1987Q3	6.77	4.14	5.52	2.53	0.90	3.15	2.79	2.53	0.35	0.60
1987Q4	6.66	5.48	4.98	1.11	2.27	7.95	3.30	4.14	4.50	3.66
1988Q1	6.55	4.04	4.02	2.42	2.26	1.42	2.70	0.27	-1.24	1.15
1988Q2	1.95	2.21	3.98	-0.25	-2.21	6.35	4.42	5.64	1.85	0.68
1988Q3	1.45	1.31	1.30	0.14	0.90	1.86	1.53	0.77	0.32	1.08
1988Q4	2.91	4.41	1.30	-1.43	1.35	5.64	3.18	4.72	2.39	0.88
1989Q1	5.35	4.36	3.47	0.95	1.79	4.52	3.15	3.82	1.32	0.68
1989Q2	2.85	0.00	2.14	2.85	0.89	2.42	0.64	1.06	1.77	1.34
1989Q3	1.41	2.14	1.27	-0.72	0.00	2.90	0.80	1.43	2.09	1.45
1989Q4	-0.46	-0.42	-0.42	-0.04	0.00	0.66	1.50	-0.06	-0.82	0.73
1990Q1	1.88	1.27	-0.42	0.60	2.68	4.96	1.81	0.41	3.09	4.52
1990Q2	-3.66	-0.42	-0.84	-3.25	-3.04	0.49	0.31	-2.38	0.17	2.94
1990Q3	-3.24	-2.09	-2.10	-1.17	-1.76	-0.88	-1.51	-3.04	0.65	2.23
1990Q4	-5.09	-1.69	-2.53	-3.47	-2.20	-4.50	-1.23	-1.30	-3.32	-3.25
1991Q1	-8.79	-9.05	-11.84	0.29	3.17	-3.36	-2.76	-4.11	-0.61	0.78
1991Q2	-0.98	1.76	-0.44	-2.68	-0.88	3.23	-1.60	-2.45	4.90	5.83
1991Q3	2.48	0.00	0.00	2.48	2.69	2.22	-0.89	-0.34	3.13	2.56
1991Q4	0.98	-2.15	-1.76	3.20	2.68	2.23	-0.73	-0.74	2.99	2.99
1992Q1	-1.45	-2.17	-2.20	0.73	0.44	5.35	-2.33	-2.14	7.87	7.66
1992Q2	1.47	-1.74	-2.21	3.28	4.00	4.55	0.84	2.15	3.69	2.35
1992Q3	1.47	-0.44	-0.45	1.92	2.63	4.64	0.80	0.63	3.81	4.00
1992Q4	2.45	1.33	1.36	1.10	0.43	5.69	1.79	2.65	3.83	2.96
1993Q1	2.92	2.67	3.17	0.25	0.00	-0.23	2.72	2.85	-2.87	-3.00
1993Q2	2.41	0.88	2.69	1.52	-0.43	2.59	2.73	4.50	-0.14	-1.83
1993Q3	2.88	3.09	2.68	-0.20	0.43	2.57	1.97	1.89	0.58	0.66
1993Q4	6.28	1.74	0.44	4.46	5.72	7.28	2.90	3.31	4.25	3.84
1994Q1	7.16	0.43	2.21	6.70	5.19	5.18	3.34	2.95	1.78	2.17
1994Q2	8.49	4.82	5.79	3.50	2.54	6.33	4.36	7.26	1.89	-0.86
1994Q3	5.95	5.20	5.70	0.71	0.00	2.20	4.92	4.65	-2.59	-2.34
1994Q4	4.95	3.84	4.31	1.07	0.84	6.03	2.33	2.58	3.61	3.36
1995Q1	6.25	2.10	0.42	4.07	5.52	0.85	3.33	2.76	-2.40	-1.86
1995Q2	-1.71	-0.83	-1.25	-0.89	-0.41	0.61	2.06	0.58	-1.41	0.04
1995Q3	-1.29	1.67	1.69	-2.91	-3.25	4.43	1.68	3.64	2.71	0.76
1995Q4	3.06	1.66	2.96	1.38	0.41	4.05	1.02	0.14	3.00	3.91
1996Q1	1.30	3.33	7.69	-1.97	-5.67	3.72	2.60	-0.49	1.08	4.22
1996Q2	2.59	1.64	0.00	0.94	2.54	7.78	2.50	2.93	5.15	4.71
1996Q3	5.65	1.23	0.41	4.37	5.10	4.00	2.58	2.88	1.38	1.09
1996Q4	5.13	-0.40	-1.22	5.56	6.32	5.79	3.63	4.82	2.08	0.92
1997Q1	5.93	0.00	0.00	5.93	5.38	3.51	3.37	4.67	0.13	-1.11
1997Q2	5.84	2.87	6.27	2.89	0.00	7.49	1.88	2.18	5.50	5.19
1997Q3	6.18	6.18	4.09	0.00	2.02	6.05	1.51	1.92	4.47	4.05
1997Q4	4.85	2.00	7.79	2.79	-2.76	3.50	2.26	1.58	1.21	1.90
1998Q1	6.84	0.40	-1.94	6.41	9.12	5.16	2.01	2.12	3.08	2.97
1998Q2	1.55	4.41	1.98	-2.74	-0.39	2.78	2.68	2.04	0.09	0.72
1998Q3	4.69	3.16	3.16	1.49	1.58	5.32	1.79	0.57	3.46	4.72
1998Q4	7.42	2.74	1.95	4.55	4.38	7.77	1.81	5.33	5.86	2.32
1999Q1	8.47	3.51	3.12	4.79	5.53	3.71	-0.05	-0.59	3.76	4.33
1999Q2	5.98	2.70	5.87	3.20	0.38	3.83	3.17	3.15	0.65	0.67
1999Q3	6.65	4.62	3.44	1.93	3.09	5.39	1.88	2.76	3.44	2.55
1999Q4	6.91	1.89	0.75	4.93	6.20	8.41	2.23	1.66	6.05	6.64
2000Q1	7.53	3.40	3.02	3.99	4.94	0.33	2.70	1.93	-2.30	-1.56
2000Q2	4.88	2.24	2.62	2.59	1.86	7.47	1.32	-0.44	6.07	7.94
2000Q3	5.53	1.11	2.61	4.37	2.97	-0.79	0.45	0.26	-1.24	-1.05
2000Q4	0.67	3.34	2.59	-2.58	-1.81	2.01	-0.76	-2.23	2.79	4.34
2001Q1	1.68	1.46	0.36	0.21	1.10	-1.14	1.19	-0.48	-2.30	-0.67
2001Q2	0.00	0.00	0.73	0.00	-0.73	0.85	-2.84	-4.36	3.79	5.44
2001Q3	-0.99	-3.22	-5.33	2.30	4.84	-3.05	-2.67	-4.59	-0.39	1.61
2001Q4	3.37	1.10	-0.73	2.24	3.66	1.80	-3.53	-4.26	5.53	6.33
2002Q1	5.73	5.96	6.03	-0.21	0.00	2.61	-3.50	-2.79	6.33	5.55
2002Q2	2.30	4.01	2.94	-1.64	-0.71	2.06	-0.51	0.16	2.58	1.91
2002Q3	4.27	3.97	1.45	0.29	2.53	3.57	-0.50	-0.93	4.09	4.54
2002Q4	2.59	3.21	2.91	-0.60	-0.36	0.45	0.48	0.42	-0.03	0.03
2003Q1	0.96	1.05	0.72	-0.09	0.00	1.75	-0.52	-1.89	2.28	3.71
2003Q2	-2.52	-1.39	-1.77	-1.15	-0.71	4.87	-1.94	-2.48	6.95	7.55
2003Q3	1.93	1.76	2.16	0.17	0.00	9.86	1.29	1.31	8.46	8.43
2003Q4	3.54	3.88	4.34	-0.33	-0.71	2.58	1.44	2.53	1.11	0.05
2004Q1	4.81	0.00	3.57	4.81	1.08	4.94	0.98	1.24	3.92	3.66
2004Q2	3.79	2.79	7.53	0.98	-3.87	4.01	2.14	0.34	1.84	3.66
2004Q3	4.39	2.42	-1.02	1.93	5.52	4.41	2.07	2.79	2.29	1.57
2004Q4	1.84	1.03	-1.03	0.81	3.24	3.60	1.50	0.92	2.07	2.66
2005Q1	2.76	1.71	0.69	1.04	2.49	4.38	2.14	0.94	2.20	3.41
2005Q2	3.05	2.39	1.73	0.65	1.06	3.99	1.74	2.81	2.20	1.15
2005Q3	3.64	0.34	0.00	3.30	3.19	4.79	-0.11	-0.13	4.90	4.92
2005Q4	2.40	0.34	0.69	2.05	2.10	1.79	1.13	1.57	0.66	0.22
2006Q1	3.59	1.69	1.37	1.87	2.09	6.43	2.67	2.43	3.66	3.91

Note: growth rates do not directly coincide with those reported by BLS because BLS calculates growth rates from source data rather than index numbers.

**Table 7: Relative Productivity Levels in the Total Economy in Canada and the United States**

Year	Canada					United States		Canada as % of US	
	GDP per worker, current CAD\$	GDP per hour, current CAD\$	GDP PPP exchange rate, US\$/CAD\$	GDP per worker, current US\$	GDP per hour, current US\$	GDP per worker, current US\$	GDP per hour, current US\$	GDP per worker	GDP per hour
	A	B	C	D=A*C	E=B*C	F	G	H=F/D*100	I=G/E*100
1961	6,351	3.11	1.101	6,994	3.43	7,565	4.07	92.46	84.13
1962	6,687	3.27	1.101	7,362	3.60	7,972	4.27	92.34	84.40
1963	7,007	3.46	1.091	7,646	3.77	8,340	4.47	91.69	84.46
1964	7,408	3.67	1.077	7,975	3.95	8,777	4.68	90.87	84.50
1965	7,874	3.94	1.058	8,329	4.16	9,244	4.90	90.09	84.92
1966	8,361	4.21	1.037	8,670	4.37	9,760	5.19	88.83	84.16
1967	8,734	4.42	1.023	8,936	4.52	10,081	5.42	88.65	83.34
1968	9,379	4.83	1.024	9,607	4.95	10,762	5.82	89.27	84.97
1969	10,033	5.21	1.026	10,290	5.34	11,329	6.15	90.83	86.89
1970	10,708	5.61	1.034	11,074	5.80	11,974	6.60	92.48	87.95
1971	11,455	6.05	1.036	11,866	6.27	12,975	7.20	91.45	87.13
1972	12,459	6.62	1.021	12,717	6.75	13,916	7.69	91.38	87.79
1973	13,967	7.45	0.982	13,721	7.32	15,001	8.33	91.47	87.88
1974	16,054	8.60	0.930	14,928	8.00	16,034	9.00	93.10	88.87
1975	17,820	9.65	0.919	16,381	8.87	17,812	10.11	91.97	87.67
1976	20,238	11.01	0.888	17,972	9.78	19,326	10.95	93.00	89.29
1977	21,976	12.08	0.884	19,434	10.68	20,710	11.77	93.84	90.74
1978	23,680	13.00	0.888	21,026	11.54	22,326	12.71	94.18	90.81
1979	25,889	14.26	0.874	22,632	12.47	24,166	13.82	93.65	90.21
1980	28,209	15.80	0.866	24,435	13.68	26,147	15.08	93.45	90.73
1981	31,380	17.59	0.855	26,844	15.04	29,089	16.88	92.28	89.11
1982	34,126	19.37	0.837	28,553	16.21	30,649	17.83	93.16	90.90
1983	36,694	20.92	0.825	30,271	17.26	33,027	19.03	91.66	90.71
1984	39,137	22.25	0.829	32,435	18.44	35,277	20.15	91.94	91.53
1985	40,987	23.22	0.828	33,947	19.23	36,934	21.14	91.91	90.97
1986	41,964	23.78	0.822	34,478	19.54	38,382	22.12	89.83	88.35
1987	44,393	25.00	0.807	35,819	20.17	39,712	22.89	90.20	88.13
1988	47,074	26.45	0.799	37,592	21.12	41,527	23.94	90.52	88.24
1989	49,298	27.83	0.793	39,082	22.06	43,637	25.03	89.56	88.15
1990	50,656	28.74	0.798	40,426	22.94	45,623	26.41	88.61	86.86
1991	52,037	29.85	0.802	41,746	23.95	47,487	27.65	87.91	86.61
1992	53,554	30.74	0.81	43,379	24.90	50,264	29.21	86.30	85.26
1993	54,979	31.55	0.82	45,083	25.87	51,894	29.99	86.87	86.27
1994	57,194	32.69	0.83	47,471	27.13	53,740	30.90	88.34	87.82
1995	59,163	33.86	0.83	49,105	28.10	54,942	31.55	89.38	89.06
1996	60,492	34.39	0.84	50,813	28.88	57,061	32.93	89.05	87.70
1997	63,185	35.81	0.84	53,076	30.08	59,302	34.00	89.50	88.46
1998	64,051	36.29	0.86	55,084	31.21	61,230	35.06	89.96	89.03
1999	66,942	37.85	0.85	56,900	32.17	63,796	36.44	89.19	88.30
2000	71,663	40.57	0.84	60,197	34.08	66,403	38.11	90.65	89.43
2001	72,953	41.45	0.85	62,010	35.23	68,672	39.80	90.30	88.51
2002	74,101	42.51	0.856	63,406	36.37	71,816	41.69	88.29	87.24
2003	76,407	44.09	0.845	64,536	37.24	75,168	43.84	85.86	84.94
2004	79,796	45.57	0.842	67,168	38.36	79,480	46.33	84.51	82.78
2005	83,432	48.05	0.838	69,942	40.28	83,273	48.58	83.99	82.90

Source: Tables 4 and 5. PPP exchange rates from Table 3.



**Table 7a: Relative Productivity Levels in the Business Sector in Canada and the United States**

Year	Canada	United States	Canada as % of US	
	GDP per Hour, 1992=100	GDP per Hour, 1992=100	GDP per Hour, 1992=100	GDP per Hour, %
	A	B	C=A/B*100	D=C/ C[1999]*82
1947	28.0	32.2	86.8	70.13
1948	28.6	33.7	84.7	68.42
1949	29.0	34.5	84.2	68.02
1950	31.9	37.3	85.6	69.15
1951	33.8	38.5	87.7	70.88
1952	36.2	39.6	91.4	73.86
1953	37.5	41.0	91.3	73.80
1954	37.1	41.9	88.5	71.52
1955	41.1	43.6	94.3	76.21
1956	43.3	43.6	99.1	80.10
1957	43.2	45.0	95.9	77.47
1958	45.5	46.3	98.3	79.45
1959	47.1	48.0	98.1	79.31
1960	48.7	48.9	99.6	80.51
1961	50.1	50.6	99.1	80.12
1962	52.2	52.9	98.6	79.72
1963	54.5	55.0	99.2	80.13
1964	56.6	56.8	99.7	80.54
1965	58.9	58.8	100.2	80.98
1966	60.3	61.2	98.5	79.61
1967	60.8	62.5	97.2	78.53
1968	64.7	64.7	100.1	80.90
1969	66.9	65.0	102.9	83.15
1970	69.3	66.3	104.5	84.48
1971	72.0	69.0	104.3	84.31
1972	75.2	71.2	105.6	85.30
1973	77.9	73.4	106.1	85.77
1974	77.4	72.3	107.2	86.59
1975	77.9	74.8	104.2	84.18
1976	82.7	77.1	107.1	86.58
1977	85.0	78.5	108.3	87.53
1978	85.2	79.3	107.4	86.77
1979	85.0	79.3	107.1	86.59
1980	85.5	79.2	108.0	87.25
1981	87.3	80.8	108.1	87.33
1982	88.7	80.1	110.6	89.39
1983	91.8	83.0	110.7	89.43
1984	95.0	85.2	111.5	90.13
1985	96.2	87.1	110.4	89.26
1986	95.7	89.7	106.7	86.21
1987	96.4	90.1	107.0	86.45
1988	97.2	91.5	106.2	85.83
1989	98.0	92.4	106.0	85.70
1990	97.8	94.4	103.6	83.72
1991	98.0	95.9	102.2	82.62
1992	100.0	100.0	100.0	80.81
1993	101.0	100.4	100.6	81.29
1994	103.9	101.3	102.5	82.85
1995	105.1	101.5	103.6	83.72
1996	104.8	104.5	100.3	81.05
1997	108.3	106.5	101.7	82.21
1998	110.8	109.4	101.3	81.84
1999	114.4	112.7	101.5	82.00
2000	118.3	115.9	102.0	82.43
2001	119.6	118.8	100.6	81.31
2002	121.2	123.6	98.1	79.24
2003	121.2	128.6	94.2	76.16
2004	121.5	133.1	91.3	73.78
2005	124.4	136.6	91.1	73.62

Source: Table 6. 1999 benchmark for the business sector of Canada's output per hour at 82 per cent that of the United States from Someshwar Rao, Jianmin Tang and Weimin Wang, "Measuring the Canada-U.S. Productivity Gap: Industry Dimensions," *International Productivity Monitor* Number 9, Fall 2004.

**Table 8: Main Labour Market Variables, Canada**

	Population '000	Working Age Population, '000	Labour Force '000	Employ- ment '000	Unemp- loyment '000	Working Age Population to Total Population Ratio, %	Employment to Working Age Population Ratio, %	Labour Force Participation Rate, %	Unemploy- ment Rate, %
	A	B	C	D	E	F = B / A	G = D / B	H = C / B	I = E / C
1976	23,414.4	17,058.0	10,491.3	9,747.5	743.8	72.85	57.14	61.50	7.09
1977	23,694.0	17,435.5	10,785.2	9,917.1	868.1	73.59	56.88	61.86	8.05
1978	23,935.7	17,778.8	11,154.6	10,220.3	934.3	74.28	57.49	62.74	8.38
1979	24,170.4	18,119.4	11,536.7	10,668.6	868.2	74.97	58.88	63.67	7.53
1980	24,471.1	18,483.5	11,879.4	10,984.0	895.3	75.53	59.43	64.27	7.54
1981	24,785.1	18,814.4	12,235.8	11,305.0	930.8	75.91	60.09	65.03	7.61
1982	25,083.5	19,103.4	12,301.8	10,943.7	1,358.2	76.16	57.29	64.40	11.04
1983	25,336.5	19,355.0	12,527.6	11,022.0	1,505.6	76.39	56.95	64.73	12.02
1984	25,577.4	19,597.9	12,747.9	11,301.7	1,446.2	76.62	57.67	65.05	11.34
1985	25,813.9	19,842.7	13,012.4	11,627.3	1,385.1	76.87	58.60	65.58	10.64
1986	26,068.4	20,093.2	13,272.1	11,986.6	1,285.5	77.08	59.66	66.05	9.69
1987	26,400.0	20,348.1	13,526.0	12,333.0	1,193.0	77.08	60.61	66.47	8.82
1988	26,754.9	20,612.2	13,779.1	12,709.6	1,069.5	77.04	61.66	66.85	7.76
1989	27,219.7	20,898.5	14,057.0	12,996.2	1,060.8	76.78	62.19	67.26	7.55
1990	27,638.6	21,214.7	14,244.6	13,086.4	1,158.3	76.76	61.69	67.14	8.13
1991	27,987.8	21,533.3	14,336.3	12,857.4	1,479.0	76.94	59.71	66.58	10.32
1992	28,319.5	21,820.2	14,336.1	12,730.9	1,605.2	77.05	58.34	65.70	11.20
1993	28,648.2	22,092.9	14,435.0	12,792.7	1,642.3	77.12	57.90	65.34	11.38
1994	28,958.3	22,367.7	14,573.7	13,058.7	1,515.0	77.24	58.38	65.16	10.40
1995	29,262.6	22,660.0	14,689.2	13,295.4	1,393.8	77.44	58.67	64.82	9.49
1996	29,570.6	22,967.1	14,853.5	13,421.4	1,432.2	77.67	58.44	64.67	9.64
1997	29,868.7	23,255.5	15,079.1	13,706.0	1,373.1	77.86	58.94	64.84	9.11
1998	30,125.7	23,522.8	15,316.3	14,046.2	1,270.1	78.08	59.71	65.11	8.29
1999	30,369.6	23,786.9	15,588.3	14,406.7	1,181.6	78.32	60.57	65.53	7.58
2000	30,650.6	24,094.2	15,847.0	14,764.2	1,082.8	78.61	61.28	65.77	6.83
2001	30,974.5	24,444.3	16,109.8	14,946.2	1,163.6	78.92	61.14	65.90	7.22
2002	31,322.3	24,797.3	16,579.3	15,310.4	1,268.9	79.17	61.74	66.86	7.65
2003	31,626.6	25,106.5	16,958.5	15,672.3	1,286.2	79.38	62.42	67.55	7.58
2004	31,932.0	25,443.4	17,182.3	15,947.0	1,235.3	79.68	62.68	67.53	7.19
2005	32,232.4	25,805.5	17,342.6	16,169.7	1,172.8	80.06	62.66	67.21	6.76
<b>Average annual rates of growth</b>									
81-89	1.18	1.32	1.75	1.76	1.65	0.14	0.43	0.42	-0.10
89-00	1.09	1.30	1.10	1.17	0.19	0.21	-0.13	-0.20	-0.90
89-96	1.19	1.36	0.79	0.46	4.38	0.17	-0.88	-0.56	3.56
96-05	0.96	1.30	1.74	2.09	-2.20	0.34	0.78	0.43	-3.86
89-05	1.06	1.33	1.32	1.37	0.63	0.26	0.05	-0.01	-0.68
96-00	0.90	1.20	1.63	2.41	-6.75	0.30	1.19	0.42	-8.25
00-05	1.01	1.38	1.82	1.84	1.61	0.37	0.45	0.43	-0.21

Source: Column A - Table 1; Columns B through E - Statistics Canada, Labour Force Survey, from CANSIM II series v2461077, v2461098, v2461119, v2461182. July 5, 2006.

All data (except for population) refer to the civilian population aged 15 and over.

Note: Employment data in this table are not consistent with the number of jobs in Table 4 due to different definitions and sources.

For example, the data in Table 4 count multiple jobholders more than once, while employment data in this table count an individual as employed regardless of the number of jobs held. Data in Table 4 are primarily based on the Labour Force Survey data shown here, but are supplemented to account for individuals not covered by the LFS, most notably those working in the territories.

Table 8A: Main Labour Market Variables, Annual Rate of Change, Canada

	Population	Working Age Population	Labour Force	Employment	Unemployment	Working Age Population to Total Population Ratio	Employment to Working Age Population Ratio	Labour Force Participation Rate	Unemployment Rate
1977	1.19	2.21	2.80	1.74	16.71	1.01	-0.46	0.58	13.53
1978	1.02	1.97	3.43	3.06	7.63	0.94	1.07	1.43	4.06
1979	0.98	1.92	3.43	4.39	-7.07	0.93	2.42	1.48	-10.15
1980	1.24	2.01	2.97	2.96	3.12	0.76	0.93	0.94	0.15
1981	1.28	1.79	3.00	2.92	3.97	0.50	1.11	1.19	0.94
1982	1.20	1.54	0.54	-3.20	45.92	0.33	-4.66	-0.98	45.13
1983	1.01	1.32	1.84	0.72	10.85	0.31	-0.59	0.51	8.85
1984	0.95	1.25	1.76	2.54	-3.95	0.30	1.27	0.50	-5.61
1985	0.92	1.25	2.07	2.88	-4.22	0.32	1.61	0.82	-6.17
1986	0.99	1.26	2.00	3.09	-7.19	0.27	1.80	0.72	-9.01
1987	1.27	1.27	1.91	2.89	-7.20	0.00	1.60	0.64	-8.94
1988	1.34	1.30	1.87	3.05	-10.35	-0.05	1.73	0.57	-12.00
1989	1.74	1.39	2.02	2.25	-0.81	-0.34	0.85	0.62	-2.77
1990	1.54	1.51	1.33	0.69	9.19	-0.03	-0.81	-0.18	7.75
1991	1.26	1.50	0.64	-1.75	27.69	0.24	-3.20	-0.85	26.87
1992	1.18	1.33	0.00	-0.98	8.53	0.15	-2.29	-1.32	8.53
1993	1.16	1.25	0.69	0.49	2.31	0.09	-0.75	-0.55	1.61
1994	1.08	1.24	0.96	2.08	-7.75	0.16	0.83	-0.28	-8.63
1995	1.05	1.31	0.79	1.81	-8.00	0.25	0.50	-0.51	-8.72
1996	1.05	1.36	1.12	0.95	2.76	0.30	-0.40	-0.23	1.62
1997	1.01	1.26	1.52	2.12	-4.13	0.24	0.85	0.26	-5.56
1998	0.86	1.15	1.57	2.48	-7.50	0.29	1.32	0.42	-8.93
1999	0.81	1.12	1.78	2.57	-6.97	0.31	1.43	0.65	-8.59
2000	0.93	1.29	1.66	2.48	-8.36	0.36	1.17	0.36	-9.86
2001	1.06	1.45	1.66	1.23	7.46	0.39	-0.22	0.20	5.71
2002	1.12	1.44	2.91	2.44	9.05	0.32	0.98	1.45	5.96
2003	0.97	1.25	2.29	2.36	1.36	0.27	1.10	1.03	-0.90
2004	0.97	1.34	1.32	1.75	-3.96	0.37	0.41	-0.02	-5.21
2005	0.94	1.42	0.93	1.40	-5.06	0.48	-0.03	-0.48	-5.94

Table 9: Main Labour Market Variables, United States

	Population '000	Working Age Population, '000	Labour Force '000	Employment '000	Unemp- loyment '000	Working Age Population to Total Population Ratio, %	Employment to Working Age Population Ratio, %	Labour Force Participation Rate, %	Unemploy- ment Rate, %
	A	B	C	D	E	F = B / A	G = D / B	H = C / B	I = E / C
1976	218,086	156,150	96,158	88,752	7,406	71.60	56.84	61.58	7.70
1977	220,289	159,033	99,009	92,017	6,991	72.19	57.86	62.26	7.06
1978	222,629	161,910	102,251	96,048	6,202	72.73	59.32	63.15	6.07
1979	225,106	164,863	104,962	98,824	6,137	73.24	59.94	63.67	5.85
1980	227,726	167,745	106,940	99,303	7,637	73.66	59.20	63.75	7.14
1981	230,008	170,130	108,670	100,397	8,273	73.97	59.01	63.87	7.61
1982	232,218	172,271	110,204	99,526	10,678	74.19	57.77	63.97	9.69
1983	234,333	174,215	111,550	100,834	10,717	74.35	57.88	64.03	9.61
1984	236,394	176,383	113,544	105,005	8,539	74.61	59.53	64.37	7.52
1985	238,506	178,206	115,461	107,150	8,312	74.72	60.13	64.79	7.20
1986	240,683	180,587	117,834	109,597	8,237	75.03	60.69	65.25	6.99
1987	242,843	182,753	119,865	112,440	7,425	75.26	61.53	65.59	6.19
1988	245,061	184,613	121,669	114,968	6,701	75.33	62.28	65.90	5.51
1989	247,387	186,393	123,869	117,342	6,528	75.34	62.95	66.46	5.27
1990	250,181	189,164	125,840	118,793	7,047	75.61	62.80	66.52	5.60
1991	253,530	190,925	126,346	117,718	8,628	75.31	61.66	66.18	6.83
1992	256,922	192,805	128,105	118,492	9,613	75.04	61.46	66.44	7.50
1993	260,282	194,838	129,200	120,259	8,940	74.86	61.72	66.31	6.92
1994	263,455	196,814	131,056	123,060	7,996	74.70	62.53	66.59	6.10
1995	266,588	198,584	132,304	124,900	7,404	74.49	62.90	66.62	5.60
1996	269,714	200,591	133,943	126,708	7,236	74.37	63.17	66.77	5.40
1997	272,958	203,133	136,297	129,558	6,739	74.42	63.78	67.10	4.94
1998	276,154	205,220	137,673	131,463	6,210	74.31	64.06	67.09	4.51
1999	279,328	207,753	139,368	133,488	5,880	74.38	64.25	67.08	4.22
2000	282,429	212,577	142,583	136,891	5,692	75.27	64.40	67.07	3.99
2001	285,371	215,092	143,734	136,933	6,801	75.37	63.66	66.82	4.73
2002	288,253	217,570	144,863	136,485	8,378	75.48	62.73	66.58	5.78
2003	291,114	221,168	146,510	137,736	8,774	75.97	62.28	66.24	5.99
2004	293,933	223,357	147,401	139,252	8,149	75.99	62.35	65.99	5.53
2005	296,677	226,082	149,320	141,730	7,591	76.20	62.69	66.05	5.08
Average annual rates of growth									
81-89	0.91	1.15	1.65	1.97	-2.92	0.23	0.81	0.50	-4.49
89-00	1.21	1.20	1.29	1.41	-1.24	-0.01	0.21	0.08	-2.49
89-96	1.24	1.05	1.12	1.10	1.48	-0.19	0.05	0.07	0.35
96-05	1.06	1.34	1.21	1.25	0.53	0.27	-0.08	-0.12	-0.67
89-05	1.14	1.21	1.17	1.19	0.95	0.07	-0.03	-0.04	-0.22
96-00	1.16	1.46	1.58	1.95	-5.82	0.30	0.48	0.11	-7.28
00-05	0.99	1.24	0.93	0.70	5.93	0.25	-0.54	-0.31	4.95

Source: Column A - Table 2; Columns B through E - BLS, Current Population Survey series LNU00000000, LNU01000000, LNU02000000, LNU03000000 July 5, 2006.

All data (except for population) refer to the civilian population aged 16 and over.

Note: Employment data in this table are not consistent with the number of jobs in Table 5 due to different definitions and sources.

The data in Table 5 count multiple jobholders more than once, while employment data in this table count an individual as employed regardless of the number of jobs held. Data in Table 5 are primarily based on the Current Employment Statistics establishment survey, but are supplemented to account for individuals not covered by the CES with data from the household-based Current Population Survey shown here, most notably the self-employed and agricultural, public administration and managerial workers.

For columns B through F, there are breaks in the series in 2000 and 2003, due to the implementation new population benchmarks.

Table 9A: Main Labour Market Variables, Annual Rate of Change, United States

	Population	Working Age Population	Labour Force	Employment	Unemployment	Working Age Population to Total Population Ratio	Employment to Working Age Population Ratio	Labour Force Participation Rate	Unemployment Rate
1977	1.01	1.85	2.96	3.68	-5.60	0.83	1.80	1.10	-8.32
1978	1.06	1.81	3.27	4.38	-11.29	0.74	2.53	1.44	-14.10
1979	1.11	1.82	2.65	2.89	-1.05	0.70	1.05	0.81	-3.60
1980	1.16	1.75	1.88	0.48	24.44	0.58	-1.24	0.13	22.14
1981	1.00	1.42	1.62	1.10	8.33	0.42	-0.32	0.19	6.60
1982	0.96	1.26	1.41	-0.87	29.07	0.29	-2.10	0.15	27.27
1983	0.91	1.13	1.22	1.31	0.37	0.22	0.18	0.09	-0.85
1984	0.88	1.24	1.79	4.14	-20.32	0.36	2.86	0.54	-21.72
1985	0.89	1.03	1.69	2.04	-2.66	0.14	1.00	0.65	-4.27
1986	0.91	1.34	2.06	2.28	-0.90	0.42	0.94	0.71	-2.90
1987	0.90	1.20	1.72	2.59	-9.86	0.30	1.38	0.52	-11.39
1988	0.91	1.02	1.51	2.25	-9.75	0.10	1.22	0.48	-11.09
1989	0.95	0.96	1.81	2.06	-2.58	0.01	1.09	0.84	-4.31
1990	1.13	1.49	1.59	1.24	7.95	0.35	-0.25	0.10	6.26
1991	1.34	0.93	0.40	-0.90	22.44	-0.40	-1.82	-0.52	21.94
1992	1.34	0.98	1.39	0.66	11.42	-0.35	-0.32	0.40	9.89
1993	1.31	1.05	0.85	1.49	-7.00	-0.25	0.43	-0.20	-7.79
1994	1.22	1.01	1.44	2.33	-10.56	-0.20	1.30	0.42	-11.83
1995	1.19	0.90	0.95	1.50	-7.40	-0.29	0.59	0.05	-8.28
1996	1.17	1.01	1.24	1.45	-2.27	-0.16	0.43	0.23	-3.46
1997	1.20	1.27	1.76	2.25	-6.87	0.06	0.97	0.48	-8.48
1998	1.17	1.03	1.01	1.47	-7.85	-0.14	0.44	-0.02	-8.77
1999	1.15	1.23	1.23	1.54	-5.31	0.08	0.30	0.00	-6.47
2000	1.11	2.32	2.31	2.55	-3.20	1.20	0.22	-0.01	-5.38
2001	1.04	1.18	0.81	0.03	19.48	0.14	-1.14	-0.37	18.53
2002	1.01	1.15	0.79	-0.33	23.19	0.14	-1.46	-0.36	22.23
2003	0.99	1.65	1.14	0.92	4.73	0.65	-0.73	-0.51	3.55
2004	0.97	0.99	0.61	1.10	-7.12	0.02	0.11	-0.38	-7.68
2005	0.93	1.22	1.30	1.78	-6.85	0.28	0.55	0.08	-8.04

Note: Working Age Population, Labour Force, Employment and Unemployment growth rates in 2000 and 2003 are affected by new population benchmarks and are not strictly comparable with growth rates for other years.

Table 10: GDP per capita decomposition into Productivity and Labour Market Components, Canada

	GDP / Population 1997 \$	GDP / Employment 1997 \$	Employment / Population %	WAP/ Population %	Employ- ment / WAP %	Labour Force / WAP %	Unemployment / WAP %
	A=B*C	B	C=D*E	D	E=F-G	F	G
1976	21,715	52,162	41.63	72.85	57.14	61.50	4.36
1977	22,201	53,043	41.85	73.59	56.88	61.86	4.98
1978	22,846	53,504	42.70	74.28	57.49	62.74	5.26
1979	23,485	53,206	44.14	74.97	58.88	63.67	4.79
1980	23,698	52,796	44.89	75.53	59.43	64.27	4.84
1981	24,218	53,096	45.61	75.91	60.09	65.03	4.95
1982	23,246	53,281	43.63	76.16	57.29	64.40	7.11
1983	23,639	54,341	43.50	76.39	56.95	64.73	7.78
1984	24,778	56,076	44.19	76.62	57.67	65.05	7.38
1985	25,725	57,112	45.04	76.87	58.60	65.58	6.98
1986	26,091	56,742	45.98	77.08	59.66	66.05	6.40
1987	26,858	57,493	46.72	77.08	60.61	66.47	5.86
1988	27,820	58,565	47.50	77.04	61.66	66.85	5.19
1989	28,062	58,774	47.75	76.78	62.19	67.26	5.08
1990	27,690	58,481	47.35	76.76	61.69	67.14	5.46
1991	26,772	58,277	45.94	76.94	59.71	66.58	6.87
1992	26,690	59,371	44.95	77.05	58.34	65.70	7.36
1993	27,001	60,466	44.65	77.12	57.90	65.34	7.43
1994	27,995	62,081	45.09	77.24	58.38	65.16	6.77
1995	28,482	62,688	45.43	77.44	58.67	64.82	6.15
1996	28,642	63,105	45.39	77.67	58.44	64.67	6.24
1997	29,554	64,405	45.89	77.86	58.94	64.84	5.90
1998	30,503	65,421	46.63	78.08	59.71	65.11	5.40
1999	31,932	67,312	47.44	78.32	60.57	65.53	4.97
2000	33,294	69,119	48.17	78.61	61.28	65.77	4.49
2001	33,534	69,496	48.25	78.92	61.14	65.90	4.76
2002	34,138	69,840	48.88	79.17	61.74	66.86	5.12
2003	34,426	69,471	49.55	79.38	62.42	67.55	5.12
2004	35,221	70,527	49.94	79.68	62.68	67.53	4.86
2005	35,917	71,597	50.17	80.06	62.66	67.21	4.54
Average annual rates of growth							
81-89	1.86	1.28	0.57	0.14	0.43	0.42	0.32
89-00	1.57	1.48	0.08	0.21	-0.13	-0.20	-1.10
89-96	0.29	1.02	-0.72	0.17	-0.88	-0.56	2.98
96-05	2.55	1.41	1.12	0.34	0.78	0.43	-3.45
89-05	1.55	1.24	0.31	0.26	0.05	-0.01	-0.69
96-00	3.83	2.30	1.50	0.30	1.19	0.42	-7.86
00-05	1.53	0.71	0.82	0.37	0.45	0.43	0.22

Source: Tables 1 and 8.

1.  $(\text{GDP} / \text{Population}) = (\text{GDP} / \text{Employment}) * (\text{Employment} / \text{Population})$

2.  $(\text{Employment} / \text{Population}) = (\text{WAP} / \text{Population}) * (\text{Employment} / \text{WAP})$

3.  $(\text{Employment} / \text{WAP}) = (\text{Labour Force} / \text{WAP}) - (\text{Unemployment} / \text{WAP})$

All data (except for population) refer to population aged 15 and over.

GDP per worker data in this table do not correspond to the GDP per job data in Table 4 due to a different definition and source for employment. See the notes to Tables 4 and 8.

Table 10A: GDP per capita decomposition into Productivity and Labour  
Market Components, Canada, Annual Rate of Change

	GDP / Population 1997 \$	GDP / Employment 1997 \$	Employment / Population %	WAP/ Population %	Employ- ment / WAP %	Labour Force / WAP %	Unemploy- ment / WAP %
	A=B+C	B	C=D+E	D	E	F	G
1977	2.24	1.69	0.54	1.01	-0.46	0.58	14.18
1978	2.90	0.87	2.02	0.94	1.07	1.43	5.55
1979	2.80	-0.56	3.37	0.93	2.42	1.48	-8.82
1980	0.91	-0.77	1.69	0.76	0.93	0.94	1.09
1981	2.20	0.57	1.62	0.50	1.11	1.19	2.14
1982	-4.02	0.35	-4.35	0.33	-4.66	-0.98	43.71
1983	1.69	1.99	-0.29	0.31	-0.59	0.51	9.41
1984	4.82	3.19	1.57	0.30	1.27	0.50	-5.14
1985	3.82	1.85	1.94	0.32	1.61	0.82	-5.41
1986	1.42	-0.65	2.08	0.27	1.80	0.72	-8.35
1987	2.94	1.32	1.60	0.00	1.60	0.64	-8.36
1988	3.58	1.86	1.69	-0.05	1.73	0.57	-11.50
1989	0.87	0.36	0.51	-0.34	0.85	0.62	-2.17
1990	-1.33	-0.50	-0.83	-0.03	-0.81	-0.18	7.56
1991	-3.31	-0.35	-2.98	0.24	-3.20	-0.85	25.80
1992	-0.31	1.88	-2.14	0.15	-2.29	-1.32	7.11
1993	1.16	1.84	-0.67	0.09	-0.75	-0.55	1.05
1994	3.68	2.67	0.99	0.16	0.83	-0.28	-8.88
1995	1.74	0.98	0.75	0.25	0.50	-0.51	-9.19
1996	0.56	0.67	-0.10	0.30	-0.40	-0.23	1.38
1997	3.18	2.06	1.10	0.24	0.85	0.26	-5.32
1998	3.21	1.58	1.61	0.29	1.32	0.42	-8.55
1999	4.69	2.89	1.74	0.31	1.43	0.65	-8.00
2000	4.27	2.68	1.54	0.36	1.17	0.36	-9.53
2001	0.72	0.55	0.17	0.39	-0.22	0.20	5.92
2002	1.80	0.50	1.30	0.32	0.98	1.45	7.50
2003	0.84	-0.53	1.38	0.27	1.10	1.03	0.12
2004	2.31	1.52	0.78	0.37	0.41	-0.02	-5.23
2005	1.98	1.52	0.45	0.48	-0.03	-0.48	-6.39

Table 11: GDP per capita decomposition into Productivity and Labour Market Components, United States

	GDP / Population 2000 \$	GDP / Employment 2000 \$	Employment / Population %	WAP/ Population %	Employ-ment / WAP %	Labour Force / WAP %	Unemploy- ment / WAP %
	A=B*C	B	C=D*E	D	E=F-G	F	G
1976	20,822	51,164	40.70	71.60	56.84	61.58	4.74
1977	21,565	51,626	41.77	72.19	57.86	62.26	4.40
1978	22,526	52,213	43.14	72.73	59.32	63.15	3.83
1979	22,982	52,350	43.90	73.24	59.94	63.67	3.72
1980	22,666	51,979	43.61	73.66	59.20	63.75	4.55
1981	23,007	52,708	43.65	73.97	59.01	63.87	4.86
1982	22,347	52,140	42.86	74.19	57.77	63.97	6.20
1983	23,146	53,789	43.03	74.35	57.88	64.03	6.15
1984	24,593	55,365	44.42	74.61	59.53	64.37	4.84
1985	25,382	56,497	44.93	74.72	60.13	64.79	4.66
1986	26,024	57,151	45.54	75.03	60.69	65.25	4.56
1987	26,664	57,587	46.30	75.26	61.53	65.59	4.06
1988	27,514	58,648	46.91	75.33	62.28	65.90	3.63
1989	28,221	59,496	47.43	75.34	62.95	66.46	3.50
1990	28,429	59,873	47.48	75.61	62.80	66.52	3.73
1991	28,007	60,318	46.43	75.31	61.66	66.18	4.52
1992	28,556	61,916	46.12	75.04	61.46	66.44	4.99
1993	28,941	62,637	46.20	74.86	61.72	66.31	4.59
1994	29,741	63,672	46.71	74.70	62.53	66.59	4.06
1995	30,128	64,305	46.85	74.49	62.90	66.62	3.73
1996	30,880	65,733	46.98	74.37	63.17	66.77	3.61
1997	31,886	67,178	47.46	74.42	63.78	67.10	3.32
1998	32,833	68,969	47.60	74.31	64.06	67.09	3.03
1999	33,904	70,945	47.79	74.38	64.25	67.08	2.83
2000	34,759	71,714	48.47	75.27	64.40	67.07	2.68
2001	34,659	72,230	47.98	75.37	63.66	66.82	3.16
2002	34,861	73,626	47.35	75.48	62.73	66.58	3.85
2003	35,452	74,930	47.31	75.97	62.28	66.24	3.97
2004	36,592	77,239	47.38	75.99	62.35	65.99	3.65
2005	37,531	78,562	47.77	76.20	62.69	66.05	3.36
Average annual rates of growth							
81-89	2.59	1.53	1.04	0.23	0.81	0.50	-4.02
89-00	1.91	1.71	0.20	-0.01	0.21	0.08	-2.41
89-96	1.30	1.43	-0.14	-0.19	0.05	0.07	0.42
96-05	2.19	2.00	0.19	0.27	-0.08	-0.12	-0.79
89-05	1.80	1.75	0.04	0.07	-0.03	-0.04	-0.26
96-00	3.00	2.20	0.78	0.30	0.48	0.11	-7.18
00-05	1.55	1.84	-0.29	0.25	-0.54	-0.31	4.63

Source: Tables 2 and 9.

1.  $(\text{GDP} / \text{Population}) = (\text{GDP} / \text{Employment}) * (\text{Employment} / \text{Population})$

2.  $(\text{Employment} / \text{Population}) = (\text{WAP} / \text{Population}) * (\text{Employment} / \text{WAP})$

3.  $(\text{Employment} / \text{WAP}) = (\text{Labour Force} / \text{WAP}) - (\text{Unemployment} / \text{WAP})$

All data (except for population) refer to the civilian population aged 16 and over.

GDP per worker data in this table do not correspond to the GDP per job data in Table 5 due to a different definition and source for employment. See the notes to Tables 5 and 9.

Growth rates of columns B and D are affected by breaks in the employment and working age population series in 2000 and 2003. See Table 9.

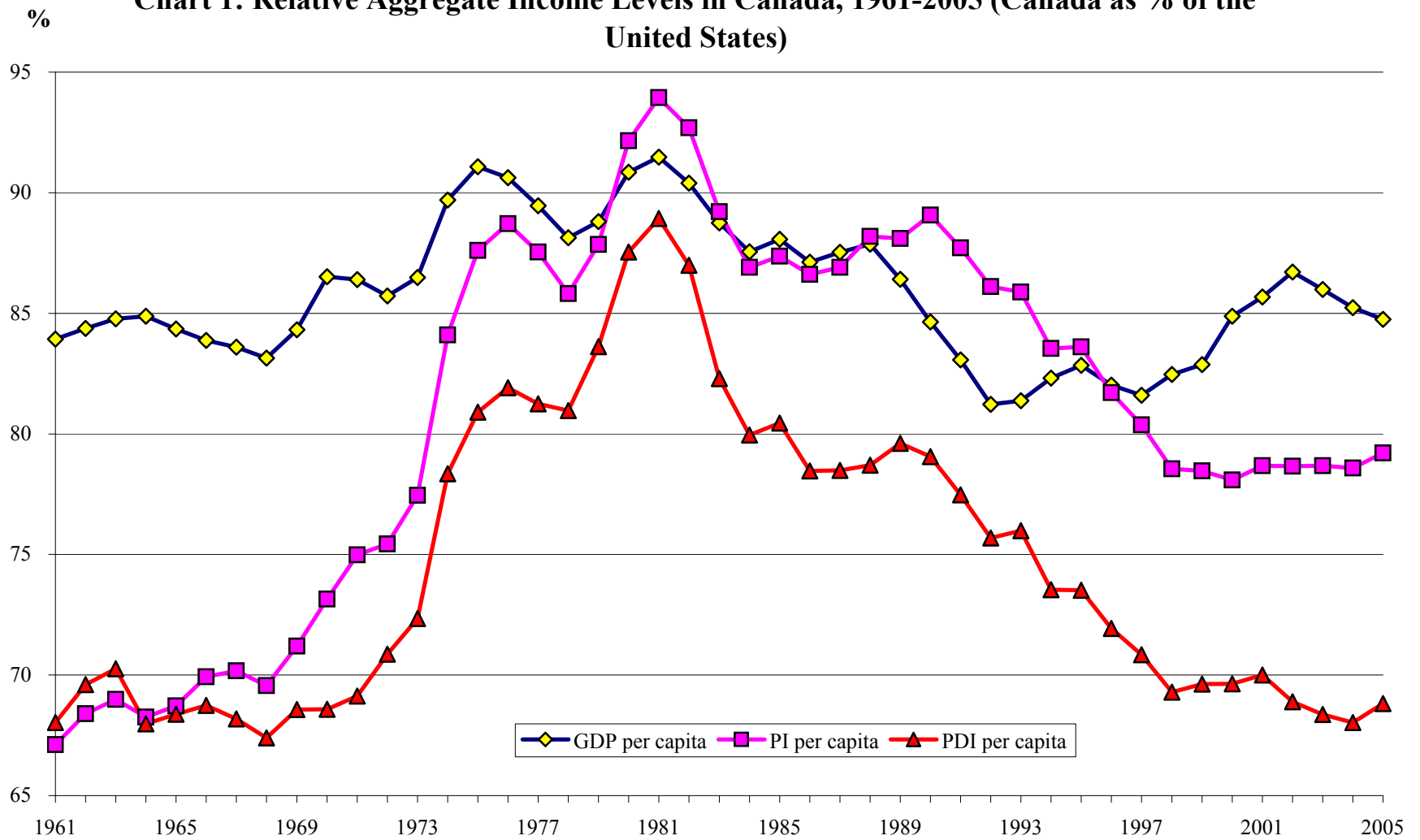


Table 11A: GDP per capita decomposition into Productivity and Labour  
Market Components, United States, Annual Rate of Change

	GDP / Population 2000 \$	GDP / Employment 2000\$	Employment / Population %	WAP / Population %	Employ- ment / WAP %	Labour Force / WAP %	Unemploy- ment / WAP %
	A=B+C	B	C=D+E	D	E	F	G
1977	3.57	0.90	2.64	0.83	1.80	1.10	-7.31
1978	4.46	1.14	3.28	0.74	2.53	1.44	-12.86
1979	2.02	0.26	1.76	0.70	1.05	0.81	-2.82
1980	-1.37	-0.71	-0.67	0.58	-1.24	0.13	22.30
1981	1.50	1.40	0.10	0.42	-0.32	0.19	6.81
1982	-2.87	-1.08	-1.81	0.29	-2.10	0.15	27.47
1983	3.58	3.16	0.40	0.22	0.18	0.09	-0.75
1984	6.25	2.93	3.23	0.36	2.86	0.54	-21.30
1985	3.21	2.05	1.14	0.14	1.00	0.65	-3.65
1986	2.53	1.16	1.36	0.42	0.94	0.71	-2.21
1987	2.46	0.76	1.68	0.30	1.38	0.52	-10.93
1988	3.19	1.84	1.32	0.10	1.22	0.48	-10.66
1989	2.57	1.45	1.11	0.01	1.09	0.84	-3.51
1990	0.74	0.63	0.11	0.35	-0.25	0.10	6.37
1991	-1.49	0.74	-2.21	-0.40	-1.82	-0.52	21.31
1992	1.96	2.65	-0.67	-0.35	-0.32	0.40	10.33
1993	1.35	1.16	0.18	-0.25	0.43	-0.20	-7.97
1994	2.77	1.65	1.10	-0.20	1.30	0.42	-11.46
1995	1.30	0.99	0.30	-0.29	0.59	0.05	-8.23
1996	2.50	2.22	0.27	-0.16	0.43	0.23	-3.25
1997	3.26	2.20	1.03	0.06	0.97	0.48	-8.03
1998	2.97	2.67	0.30	-0.14	0.44	-0.02	-8.79
1999	3.26	2.86	0.39	0.08	0.30	0.00	-6.47
2000	2.52	1.08	1.42	1.20	0.22	-0.01	-5.39
2001	-0.29	0.72	-1.00	0.14	-1.14	-0.37	18.09
2002	0.58	1.93	-1.32	0.14	-1.46	-0.36	21.78
2003	1.70	1.77	-0.08	0.65	-0.73	-0.51	3.02
2004	3.22	3.08	0.13	0.02	0.11	-0.38	-8.03
2005	2.57	1.71	0.84	0.28	0.55	0.08	-7.97

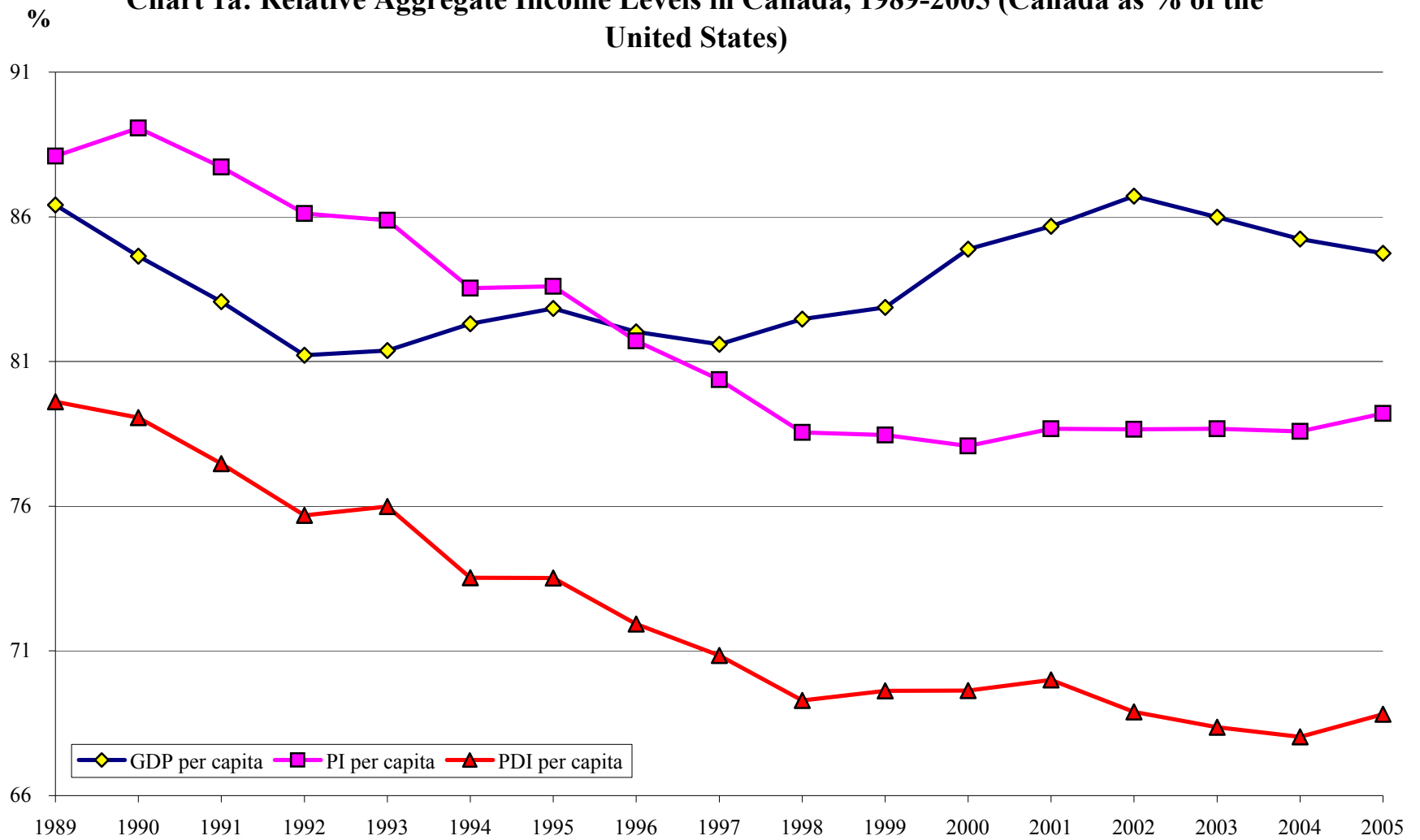
Note: Growth rates of columns B and D are affected by breaks in the employment and working age population series in 2000 and 2003. See Table 9.

**Chart 1: Relative Aggregate Income Levels in Canada, 1961-2005 (Canada as % of the United States)**



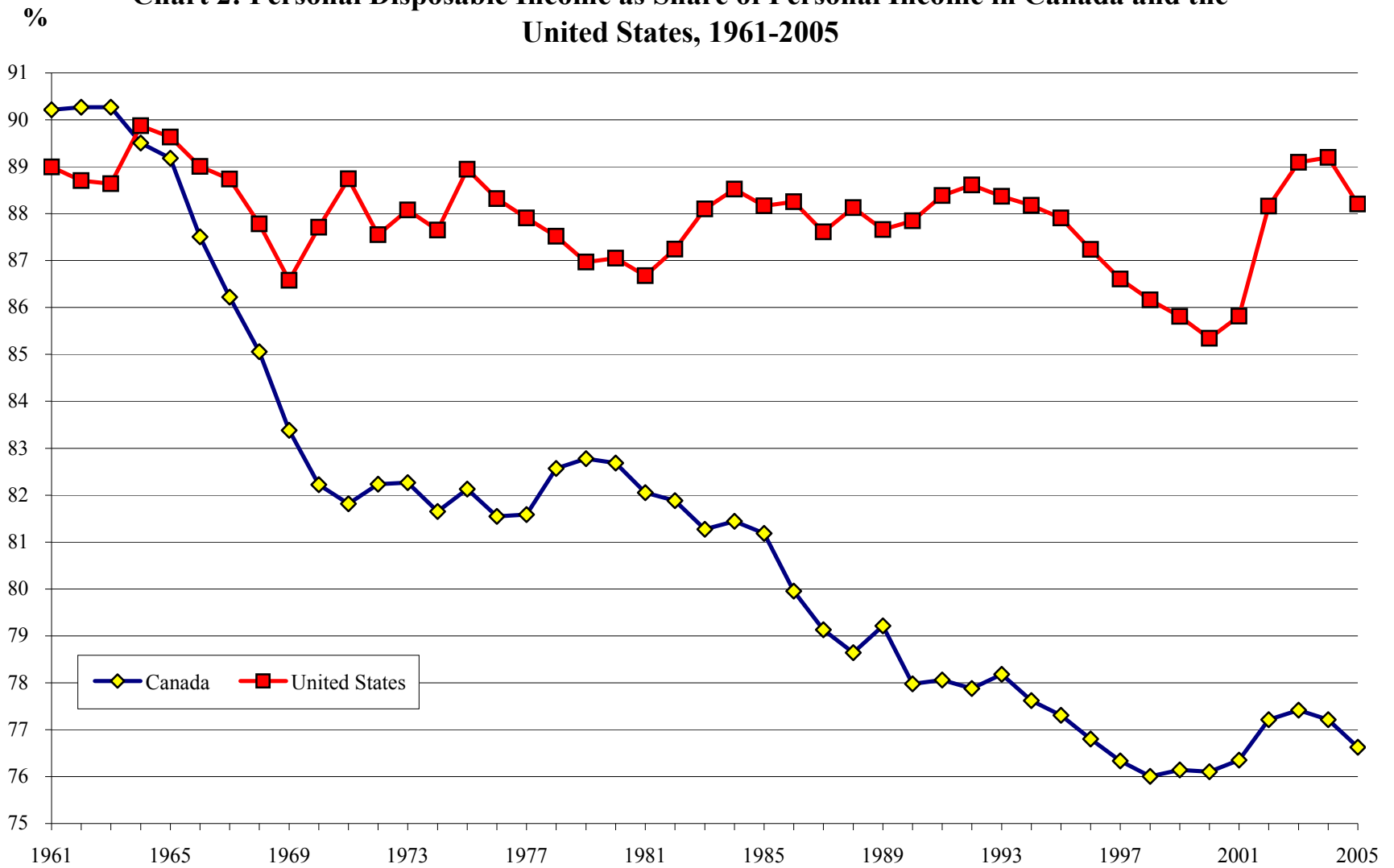
Source: Table 3.

**Chart 1a: Relative Aggregate Income Levels in Canada, 1989-2005 (Canada as % of the United States)**



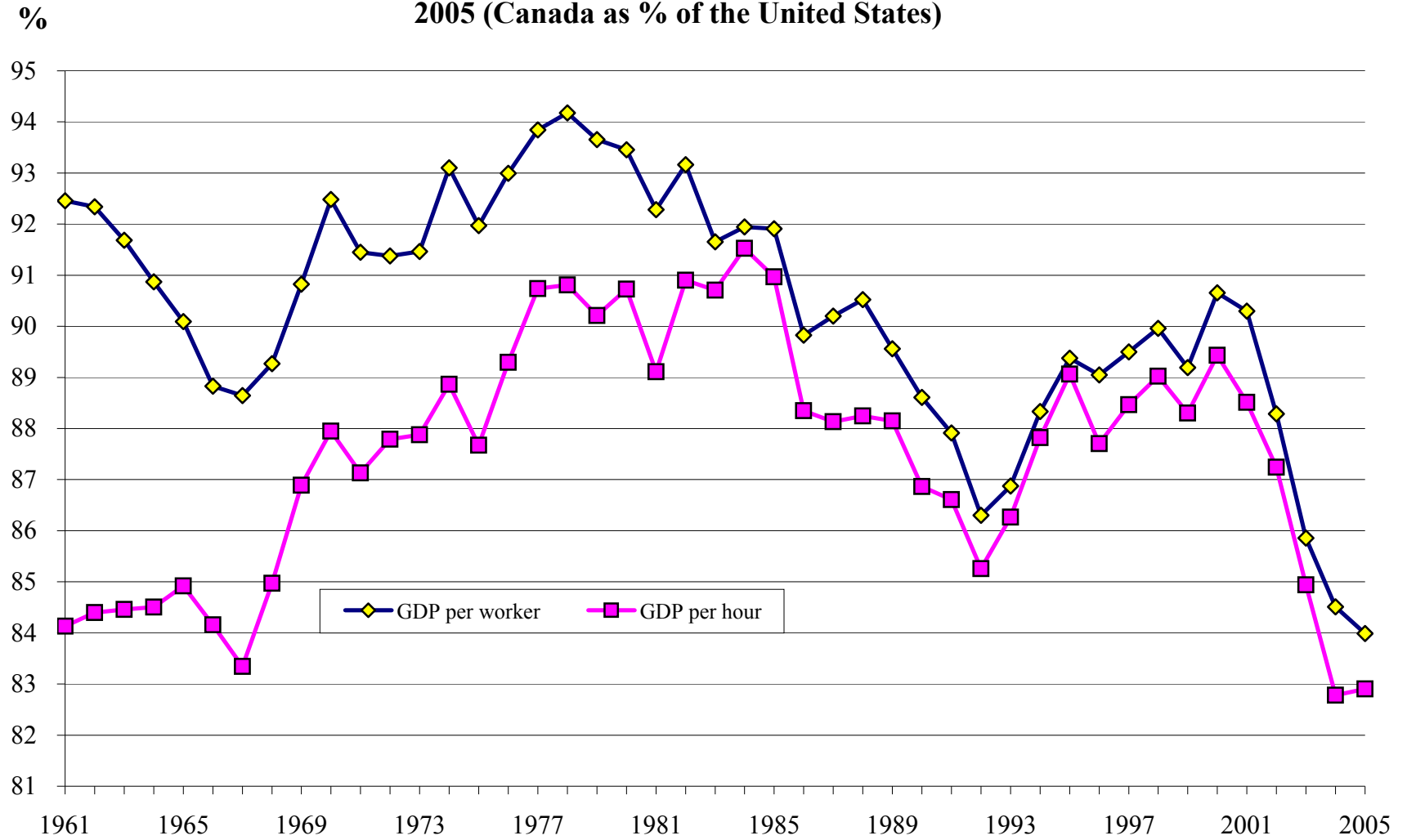
Source: Table 3.

**Chart 2: Personal Disposable Income as Share of Personal Income in Canada and the United States, 1961-2005**



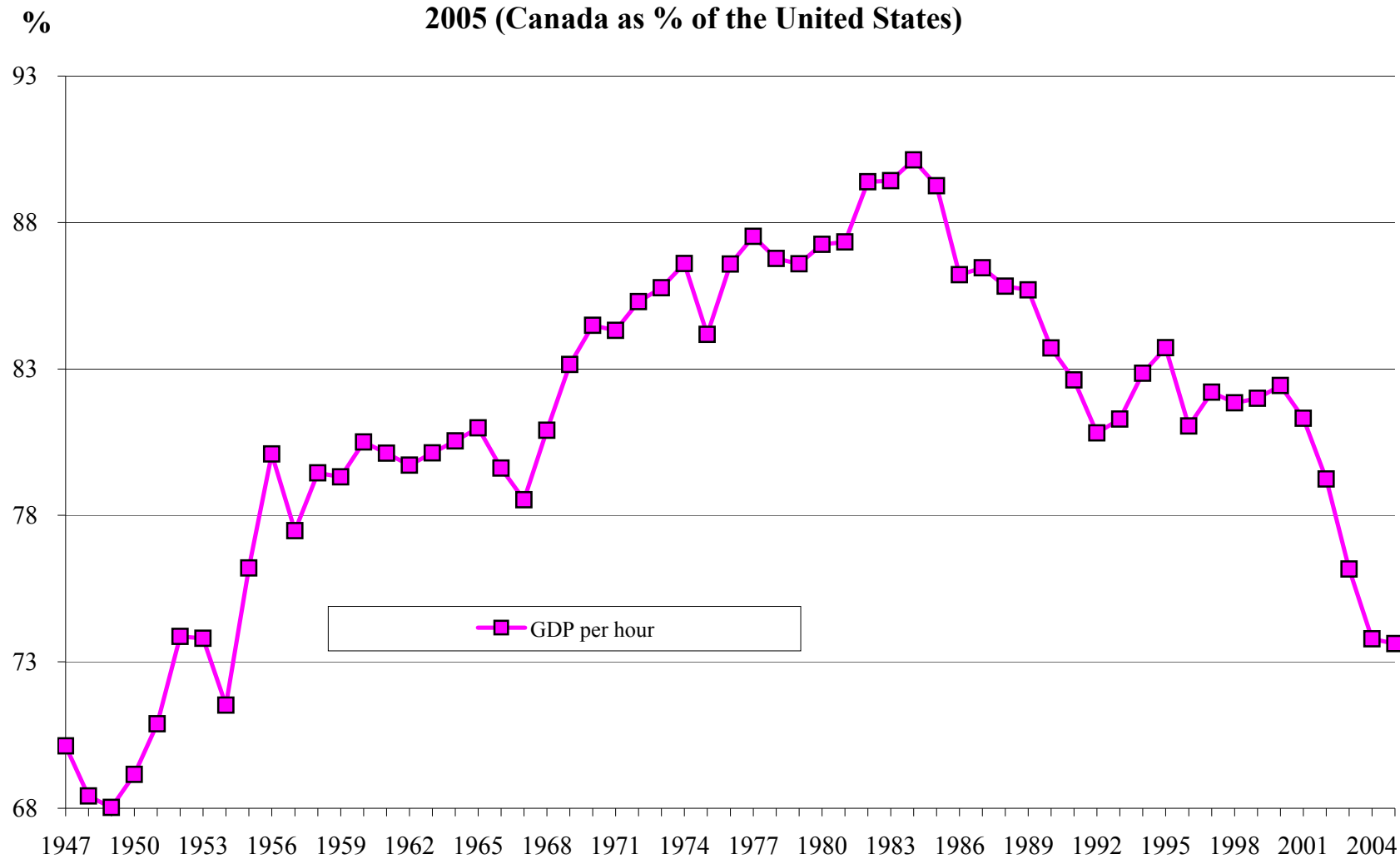
Source: Table 3.

**Chart 3: Relative Labour Productivity Levels in the Total Economy in Canada, 1961-2005 (Canada as % of the United States)**



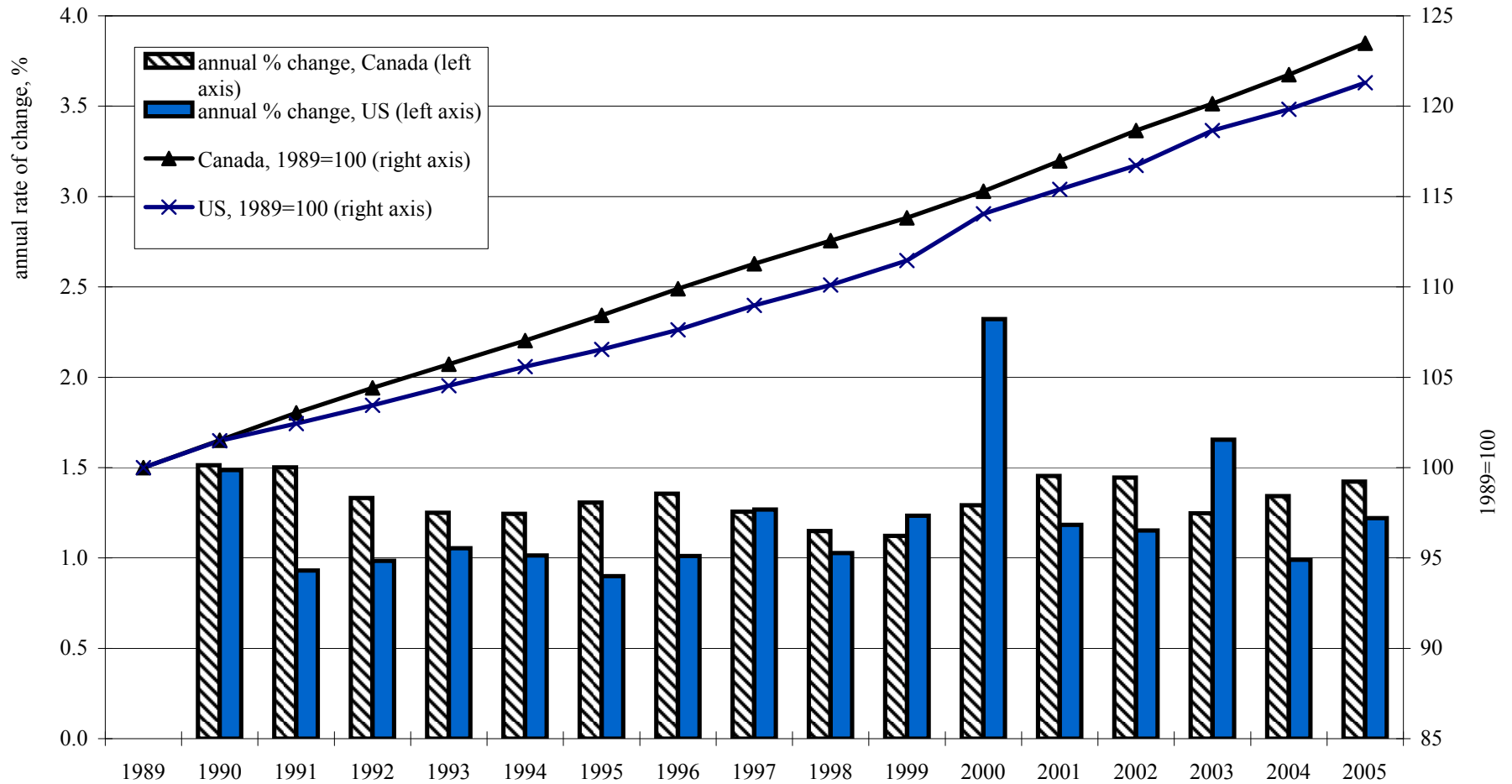
Source: Table 7.

**Chart 3a: Relative Labour Productivity Levels in the Business Sector in Canada, 1947-2005 (Canada as % of the United States)**



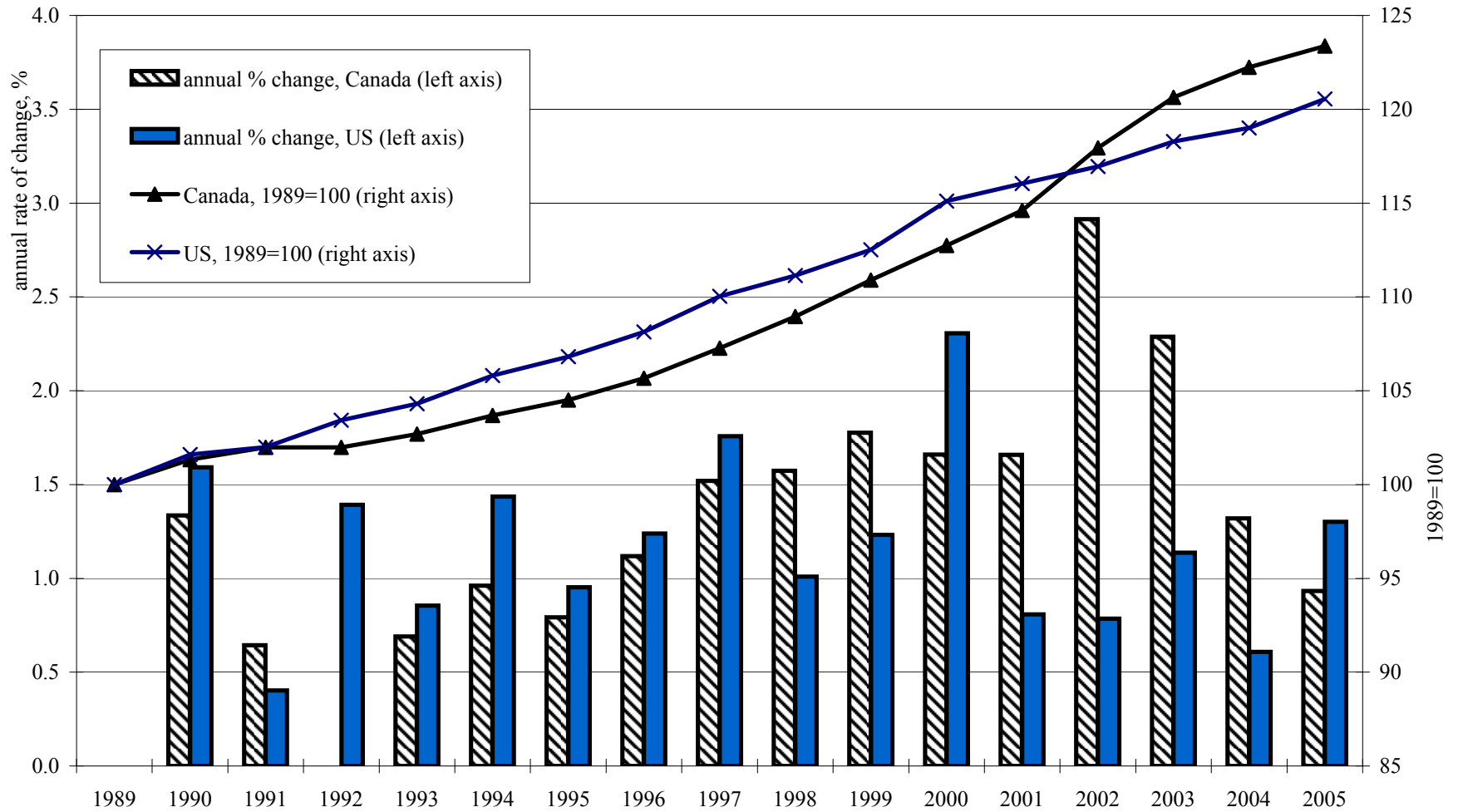
Source: Table 7a.

**Chart 4: Working Age Population in Canada and the United States, 1989-2005**



All labour market data (except for population) refer to population aged 15 and over in Canada and 16 and over in the United States. U.S. data in 2000 and 2003 are affected by new population benchmarks. Source: Tables 8 and 9.

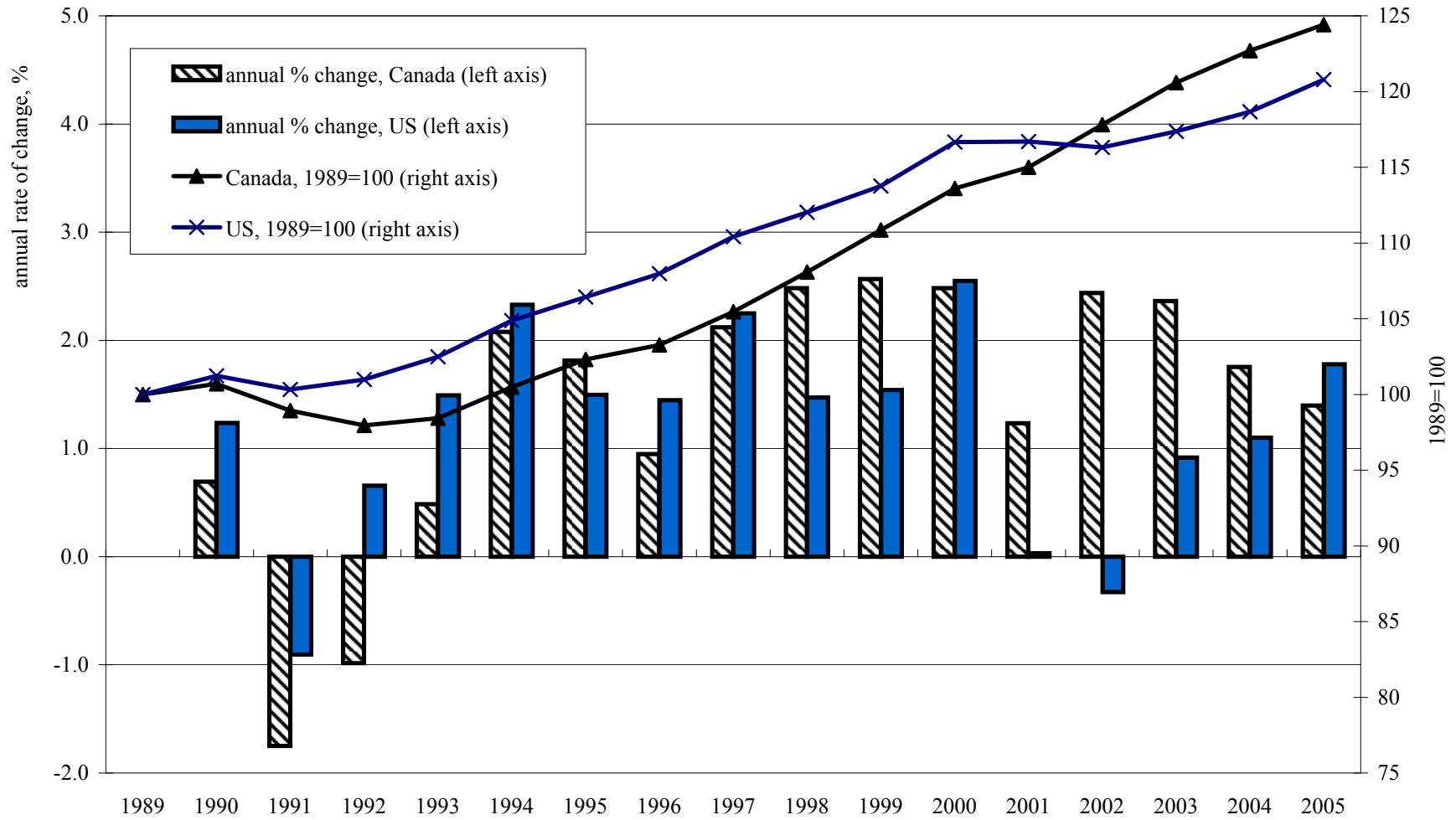
**Chart 5: Labour Force in Canada and the United States, 1989-2005**



All labour market data (except for population) refer to population aged 15 and over in Canada and 16 and over in the United States. U.S. data in 2000 and 2003 are affected by new population benchmarks. Source: Tables 8 and 9.

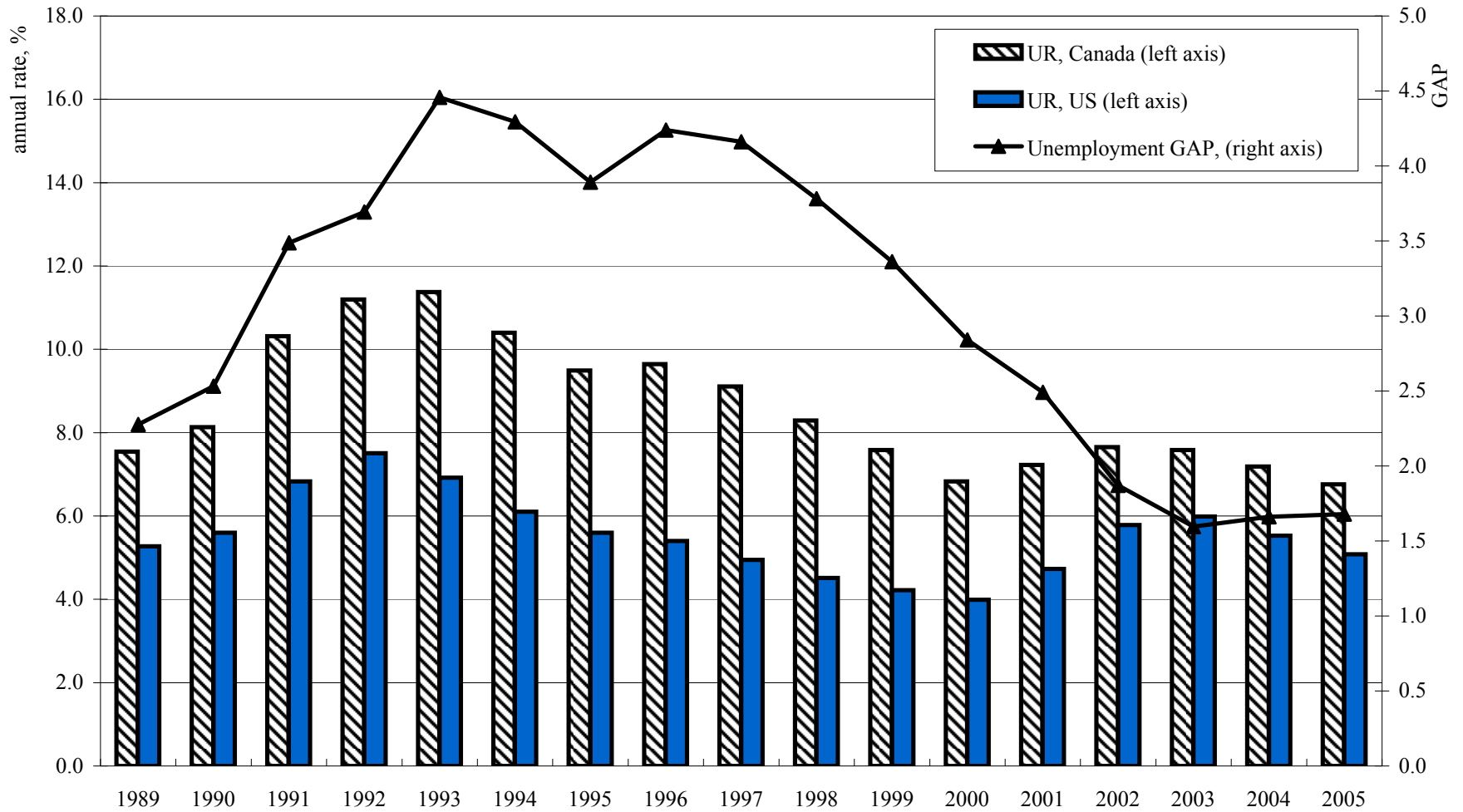


**Chart 6: Employment in Canada and the United States, 1989-2005**



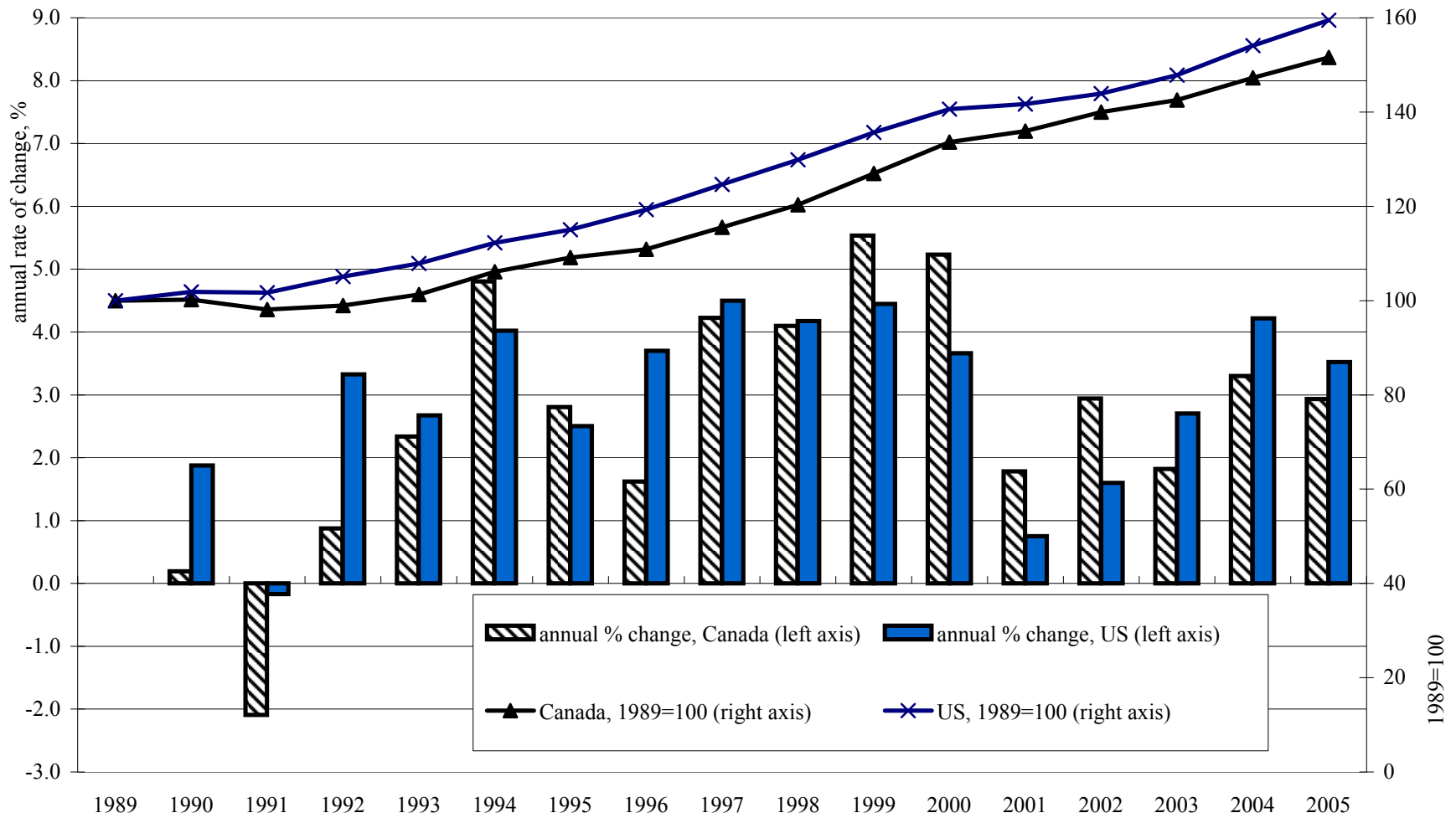
All labour market data (except for population) refer to population aged 15 and over in Canada and 16 and over in the United States. U.S. data in 2000 and 2003 are affected by new population benchmarks. Source: Tables 8 and 9.

**Chart 7: Unemployment Rate in Canada and the United States, 1989-2005**



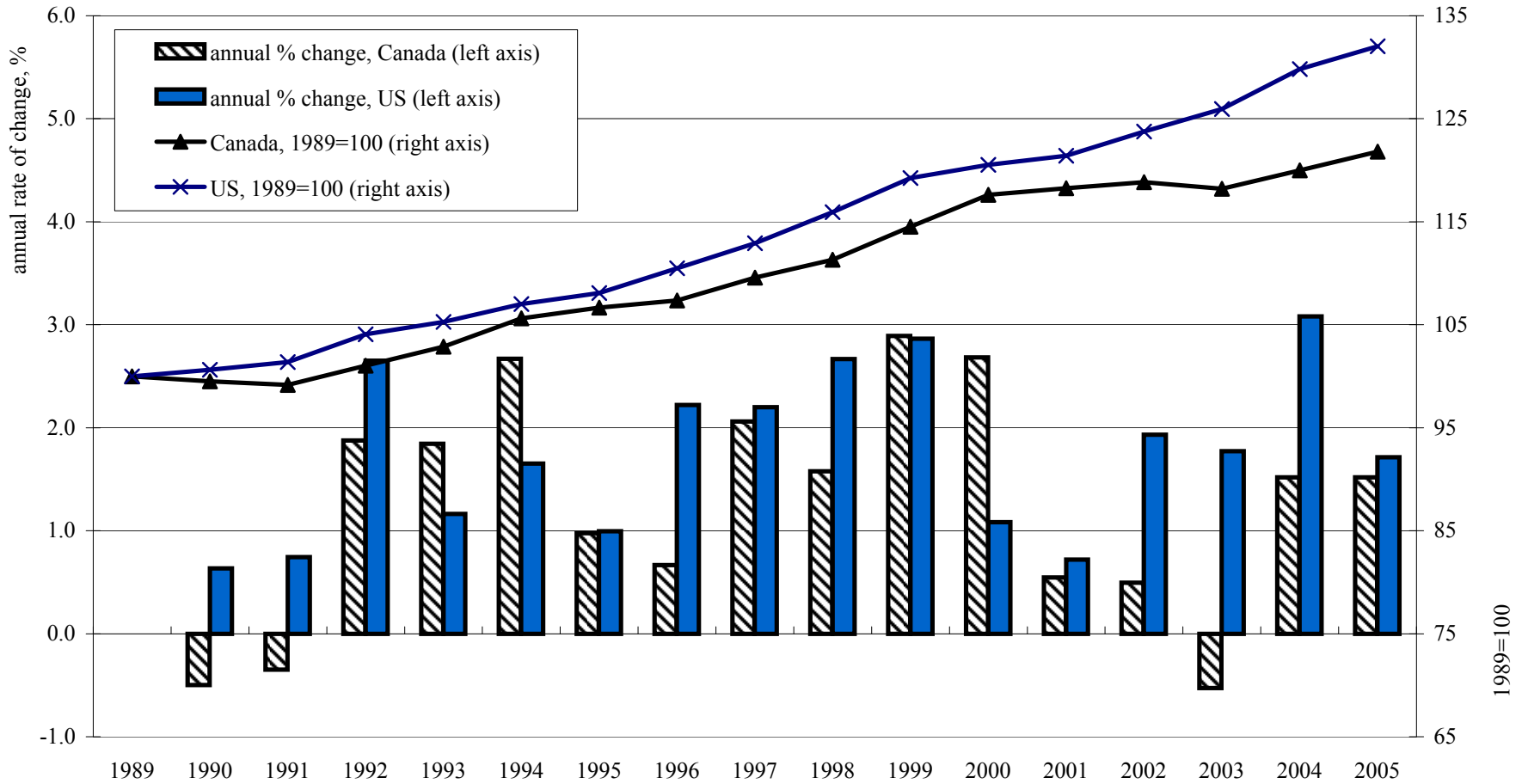
All labour market data (except for population) refer to population aged 15 and over in Canada and 16 and over in the United States. Source: Tables 8 and 9.

**Chart 8: Real GDP in Canada and the United States, 1989-2005**



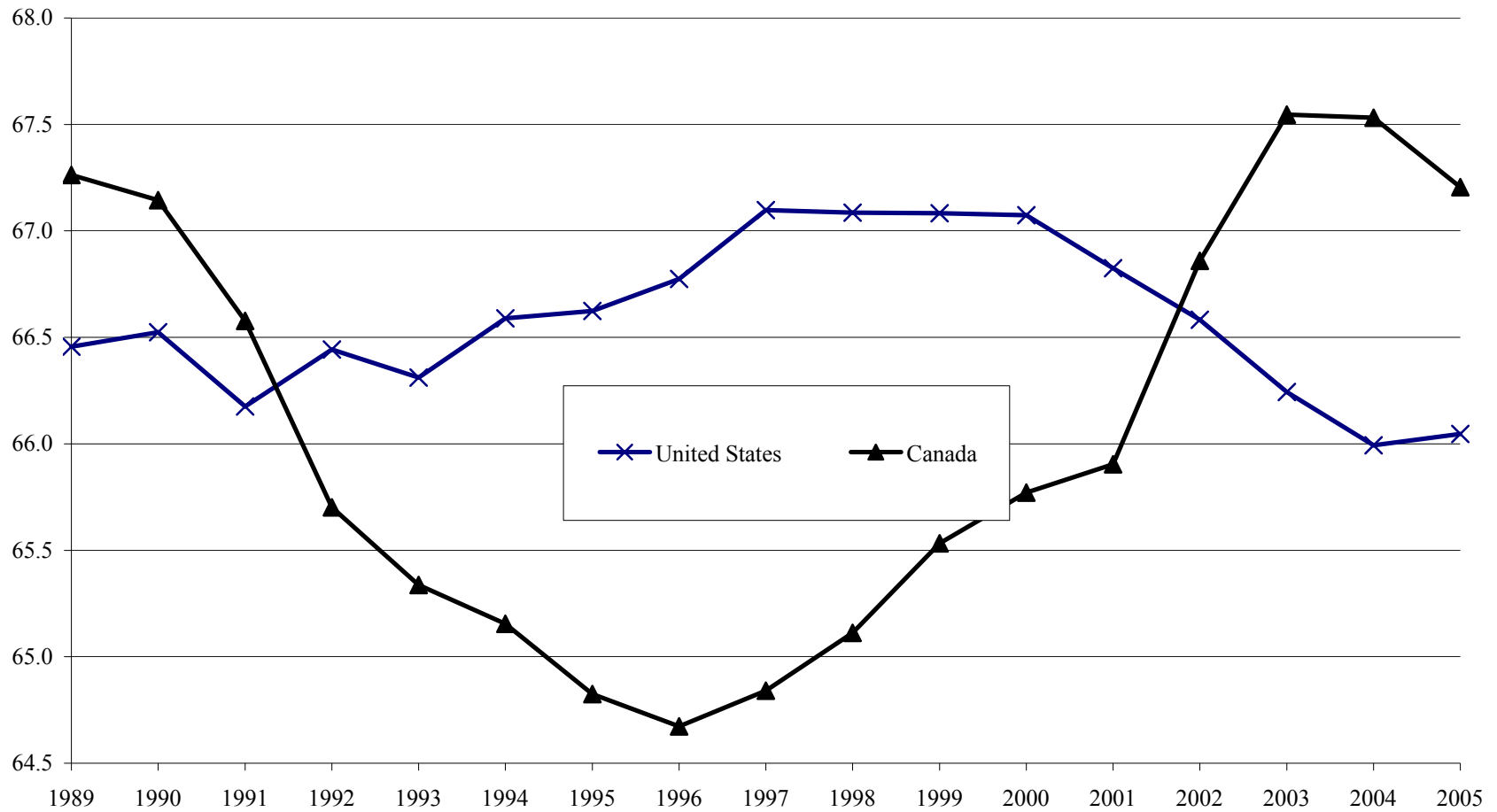
Source: Tables 4 and 5.

**Chart 9: Real GDP per worker in Canada and the United States, 1989-2005**



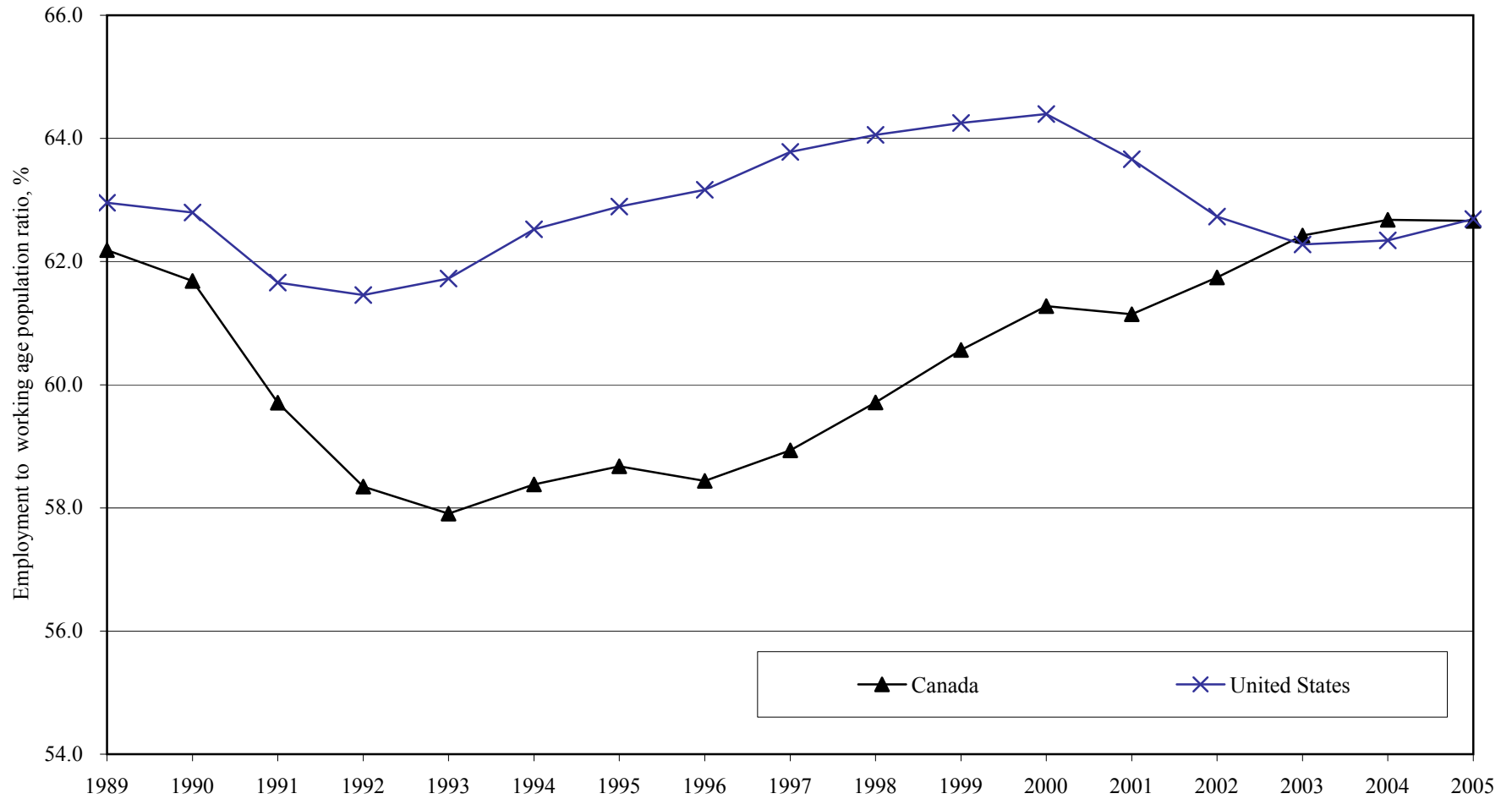
Employment data refer to population aged 15 and over in Canada and 16 and over in the United States. U.S. data in 2000 and 2003 are affected by new population benchmarks in the employment series. Source: Tables 10 and 11.

**Chart 10: Labour Force Participation Rate in Canada and the United States, 1989-2005**



All labour market data (except for population) refer to population aged 15 and over in Canada and 16 and over in the United States. Source: Tables 8 and 9.

**Chart 11: Employment to Working Age Population Ratio, Canada and the United States, 1989-2005**



All labour market data (except for population) refer to population aged 15 and over in Canada and 16 and over in the United States. Source: Tables 8 and 9.