

MINUTES OF THE MEETING  
OF THE  
MICHIGAN STATE UNIVERSITY  
BOARD OF TRUSTEES

September 11, 2009

President Simon called the meeting of the Board of Trustees to order at 9:35 a.m. in the Board Room.

Trustees present: Dianne Byrum, Joel Ferguson, Melanie Foster, Colleen McNamara, Donald Nugent, Faylene Owen, George Perles, and Diann Woodard.

University officers present: President Simon, Provost Wilcox, Vice President Poston, Secretary Beekman, Vice President and General Counsel Noto, Vice Presidents Denbow, Gray, Groves, Hudzik, June, and Webster, Senior Advisor and Director Granberry Russell, and Acting Executive Director Cash. Faculty liaisons present: Harold Hughes, Mark Largent, Deborah Moriarty, and Mariam Sticklen. Student liaisons present: Kristy Currier, Kyle Dysarz and Rachel Naegele.

All actions taken were by unanimous vote of the Trustees present, unless otherwise noted.

1. On a motion by Trustee Foster, supported by Trustee Byrum, the **BOARD VOTED to approve** the agenda.
2. On a motion by Trustee Woodard, supported by Trustee Owen, the **BOARD VOTED to approve** the minutes of the Board meeting of June 19, 2009.
3. President's Report

A. Welcome Back Students

President Simon said campus activity had increased greatly over the past few days. She noted that she was able to meet some students and parents as the students moved in on August 30, and she encouraged everyone to welcome the new and returning students to campus.

B. MSU Surplus Store and Recycling Center Grand Opening

President Simon asked Vice President Poston to comment on the MSU Surplus Store and Recycling Center Grand Opening.

Vice President Poston said that the grand opening on September 10, 2009 was well attended. He thanked President Simon and Trustee Foster for their participation. He noted that there is a tremendous amount of excitement across campus and in the community for the facility.

C. U.S. News Rankings Mention Four “Stellar” MSU Programs

President Simon said that four MSU programs that are “linked to student success” according to U.S. News & World Report were listed among the magazine’s “Programs to Look For” in its newest rankings of America’s best colleges. The magazine’s 2010 edition recognizes MSU’s residential colleges, or learning communities; undergraduate research/creative projects; service learning; and study abroad programs as “stellar examples” of programs that help students succeed.

E. Coaches for Kids

President Simon noted that she had the opportunity to be on the Tim Staudt program to promote the Coaches for Kids event on September 13, 2009. The MSU Marching Band and Sparrow Health System partnered to raise money for this important cause. This is just one of the many important collaborations between MSU and the Sparrow Health System.

F. September 11, 2001

President Simon stated that today marked the eighth anniversary of a very tragic event for the world. She asked that a moment of silence be observed.

4. There was no Public Participation on Issues Germane to the Agenda

5. Personnel Actions

Provost Kim Wilcox presented the following personnel actions:

Hotchkiss, Joseph H., AY—Professor, School of Packaging, \$150,000, with Tenure, effective October 1, 2009.

Weldt Basson, Helene C., AY—Associate Professor, Department of Spanish and Portuguese, \$80,000, with Tenure, effective August 16, 2009.

Pollet, Joshua M., AY—Associate Professor, Department of Finance, \$210,000, with Tenure, effective August 16, 2009.

Brockey, Liam M., AY—Associate Professor, Department of History, \$80,000, with Tenure, effective August 16, 2009.

Chandra, Siddharth, AN—Professor, Asian Studies Center; James Madison College, \$135,000, with Tenure, effective August 16, 2009.

Trustee Ferguson **moved to approve** the recommendations, with support from Trustee Foster.

**THE BOARD VOTED to approve** the recommendations.

President Simon presented the following personnel actions:

Comley, Richard B., AN—Head Coach—Hockey, Intercollegiate Athletics, Subject to Contract, effective July 1, 2012 to June 30, 2013.

Izzo, Thomas, AN—Head Coach—Basketball, Intercollegiate Athletics, Subject to Contract, effective January 1, 2014 to December 31, 2016.

Rakan, Susan M., (Suzy Merchant), AN—Head Coach—Women's Basketball, Intercollegiate Athletics, Subject to Contract, effective July 1, 2013 to June 30, 2014.

Trustee Nugent **moved to approve** the recommendations, with support from Trustee Owen.

Mark Hollis, Director of Intercollegiate Athletics, said the Department of Intercollegiate Athletics is looking forward to a long-term relationship with the coaches. He noted that the coaches represent the best of Team MSU and he is thankful to have them as part of the Spartan family.

**THE BOARD VOTED to approve** the recommendations.

President Simon presented the following personnel action:

Hollis, Mark J., AN—Director of Intercollegiate Athletics, Subject to Contract, effective January 1, 2014 to December 31, 2016.

Trustee Ferguson **moved to approve** the recommendation, with support from Trustee Nugent.

**THE BOARD VOTED to approve** the recommendation.

6. Gifts, Grants, and Contracts

Vice President Gray presented the Gifts, Grants, and Contracts Report for the period June 6, 2009 through August 31, 2009. The total value for this period is \$132,861,959.

Trustee Foster **moved to approve** the report, supported by Trustee Owen.

**THE BOARD VOTED to approve** the Gifts, Grants, and Contracts Report.

Vice President Gray introduced Dr. Richard Lenski, Hannah Distinguished Professor in the College of Natural Science. Dr. Lenski discussed his research on evolution in action. (Appendix A)

7. Finance Committee

Trustee Owen presented the Trustee Finance Committee Report and recommendations.

A. Investment Update

Trustee Owen asked Glen Klein, Director of Investments and Financial Management, to give an update on the status of MSU's common investment fund.

Mr. Klein said that MSU's common investment fund, which is composed of university endowments, approximated roughly \$1.1 billion as of June 30, 2009. Over the past decade, MSU has built a well diversified portfolio designed to optimize returns while controlling risks. This approach has given MSU superior long-term returns and has helped it weather this recent market crisis. MSU has used this opportunity to take advantage of some investment opportunities, primarily in the distressed debt areas. Managers have been put in place and MSU is seeing some positive returns on those investments. MSU is also using this investment period to invest with top-tier private equity investment managers that were previously closed to new investors.

For the year ended June 30, 2009, MSU's common investment fund had a return of -18 percent. That compares to the S&P 500 index, which lost 26.2 percent. Over the ten year period ended June 30, 2009, MSU's common investment fund returned 7 percent annually compared to the S&P 500, which lost 2.2 percent annually. That places MSU in the top 10 percent among Cambridge Associates' clients. MSU's portfolio has performed well during this

economic downturn. It is properly positioned for both the short and long term.

B. Orion Capital Manager

It was recommended that the Board of Trustees select Orion Capital Managers as an investment manager.

Trustee Owen **moved to approve** the recommendation, with support from Trustee Nugent.

**THE BOARD VOTED to approve** the recommendation.

C. Authorization to Plan—Residential and Hospitality Services—Dining Master Plan

It was recommended that the Board of Trustees authorize the administration to plan for the project entitled Residential and Hospitality Services—Dining Master Plan.

Trustee Owen **moved to approve** the recommendation, with support from Trustee Foster.

Vennie Gore, Assistant Vice President for Residential and Hospitality Services (RHS), thanked Vice President Poston for his leadership and guidance through this planning process. He noted that two facilities reflecting new food service concepts have opened in the MSU Union in the past 90 days. The Riverwalk Café also opened. The purchasing of locally grown Michigan products continues to be a priority. To help facilitate academic collaborations, RHS has been working with the student organic farm. MSU is the only campus in the country that has student farmers organically produce food for use in the residence halls.

**THE BOARD VOTED to approve** the recommendation.

D. Project Approval—Authorization to Proceed—Anthony Hall—Alterations to Rooms 3200 and 3211

It was recommended that the Board of Trustees authorize the Administration to proceed with the project entitled Anthony Hall—Alterations to Rooms 3200 and 3211 and to approve a budget of \$2,500,000.

Trustee Owen **moved to approve** the recommendation, with support from Trustee Nugent.

**THE BOARD VOTED to approve** the recommendation

- E. Project Approval—Authorization to Proceed—Giltner Hall—Alterations to Suites 31 and 32

It was recommended that the Board of Trustees authorize the Administration to proceed with the project entitled Giltner Hall Alterations to Suites 31 and 32 and to approve a budget of \$1,000,000.

Trustee Owen **moved to approve** the recommendation, with support from Trustee Perles.

**THE BOARD VOTED to approve** the recommendation.

- F. Bid and Contract Award—Food Stores—Alterations to Freezer Walls

It was recommended that the Board of Trustees award a contract in the amount of \$2,301,274 to Nielsen Commercial Construction Company for the project entitled Food Stores—Alterations to Freezer Walls.

Trustee Owen **moved to approve** the recommendation, with support from Trustee Nugent.

**THE BOARD VOTED to approve** the recommendation.

8. Policy Committee

Trustee McNamara presented the Trustee Policy Committee Report and recommendations.

- A. Fall 2009 Preliminary Enrollment Report

Provost Wilcox presented the Fall 2009 Preliminary Enrollment Report. (Appendix B)

- B. Fall Welcome 2009

Dr. Doug Estry, Associate Provost and Dean of Undergraduate Education, presented the Fall Welcome 2009 Report. (Appendix C)

- C. Notice of Intent to Negotiate Publishing Contracts

Pursuant to State law, the Chair of the Policy Committee gave public notice to the Board of the University's intent to negotiate a contract with Dr. Helen Veit regarding a publication by the MSU Press. Dr. Veit is a faculty member in the Department of History and in Lyman Briggs College.

Pursuant to State law, the Chair of the Policy Committee gave public notice to the Board of the University's intent to negotiate a contract with Dr. Nancy Bunge regarding a publication by the MSU Press. Dr. Bunge is a faculty member in the Department of Writing, Rhetoric and American Cultures.

Pursuant to State law, the Chair of the Policy Committee gave public notice to the Board of the University's intent to negotiate a contract with Dr. Georgina Montgomery regarding a publication by the MSU Press. Dr. Montgomery is a faculty member in the Department of History and in Lyman Briggs College.

Pursuant to State law, the Chair of the Policy Committee gave public notice to the Board of the University's intent to negotiate a contract with Dr. Igor Vojnovic regarding a publication by the MSU Press. Dr. Vojnovic is a faculty member in the Department of Geography.

D. Approval of Contract Terms

It was recommended to the Board of Trustees that it approve the execution of a publishing contract with Dr. Ionel Ciugulea and Dr. Richard Triemer, consistent with earlier public notice given at a Board meeting and with the "Publishing Contract Term Sheet" presented to the Board. (Appendix D)

It was recommended to the Board of Trustees that it approve the execution of a publishing contract with Dr. Linda Kalof, consistent with earlier public notice given at a Board meeting and with the "Publishing Contract Term Sheet" presented to the Board. (Appendix E)

It was recommended to the Board of Trustees that it approve the amendment of a contract with AFID Therapeutics, Inc., consistent with earlier public notice given at a Board meeting and with the "First Amended Contract Term Sheet" presented to the Board. (Appendix F)

Trustee McNamara **moved to approve** the recommendations, with support from Trustee Owen.

**THE BOARD VOTED to approve** the recommendations.

9. Compensation Committee

Trustee Nugent said that there was no official report, but that at the Board of Trustees Retreat, the committee did an appraisal of the President's performance. She received an excellent evaluation.

10. Trustee Comments

Trustee Ferguson stated that he was looking forward to September 17 and the grand opening of the MSU College of Osteopathic Medicine facility and the Detroit Medical Center in Detroit.

Trustee Nugent said he wanted to be clear that the Board believes that adequate funding is needed for agriculture research and Extension Services funding.

Trustee Byrum said that the faculty liaison committee met and discussed many important topics, including the 2009 Fall Welcome. It is good to be back on campus for the new academic year.

Trustee Owen invited everyone to the Hoophouse Gala on September 20, 2009. The event is in support of the student organic farm.

Trustee Woodard said that she had a productive meeting with the student liaison committee. Its members hope to continue to be a resource to MSU and hope to be proactive regarding campus issues. Trustee Woodard noted that she was very pleased with the new Fall Welcome and its activities.

Trustee Foster said it was great to have everyone back for a new academic year.

11. Public Participation on Other Issues

A. LaborFest 2009

Ms. Deb Bittner, President of the Clerical Technical Union (CTU), thanked MSU for partnering with the campus labor unions for the LaborFest 2009 celebration. The event was part of the City of Lansing's sesquicentennial activities. The CTU appreciates the many ways that MSU works to advance the region. It is an honor



for the CTU members to serve as ambassadors for the University. The coalition of labor organizations at MSU joined local laborers in presenting hands-on exhibits and displays for children. Ms. Bittner thanked President Simon, Secretary Beekman, and Acting Executive Director Cash for assisting with the MSU activity guides and providing many items for the families.

B. LaborFest 2009

Mr. Wayne Cass, Chair of the Coalition of Labor Organizations, said that he appreciated the support and opportunity to be an ambassador of MSU to increase community awareness of MSU programs. Mr. Cass thanked Ms. Bittner for coordinating the event.

C. Chicano/Latino Studies (CLS)

Ms. Ruth Verdin, MSU student in the Residential College of Arts and Humanities and the Chicano/Latino Studies program, said that the CLS fellows program allowed her to adjust to campus when she arrived as a freshman. The resources available through CLS are important to all students. Ms. Verdin stated that Dr. Sheila Contreras, Director of CLS, has removed the core faculty and graduate and undergraduate students from the office. Ms. Verdin stated that Dr. Contreras has dismissed student concerns. The climate of CLS has turned to one that is unwelcoming for all students wanting to be involved.

D. Chicano/Latino Studies (CLS)

Ms. Sara Vitale, MSU student, said her experience with the CLS program has been uncomfortable. Ms. Vitale stated that when Dr. Contreras became the director of CLS, she forced undergraduate and graduate students and core faculty from the program. Ms. Vitale said that student voices have been silenced with regard to shaping the future of the program. Ms. Vitale said that Dr. Marietta Baba, Dean of Social Science, chose a committee to investigate student concerns and indicated that she would act on the recommendations of the committee. Ms. Vitale said the committee returned results that overwhelmingly supported the student concerns and recommended that Dr. Contreras be removed as director. Ms. Vitale said that she hoped that future CLS students would not have the same experience.

E. Chicano/Latino Studies (CLS)

Ms. Crystal Cuevas, MSU student, said the CLS program has struggled for a space and budget on campus. Ms. Cuevas asked that the Board uphold the process that students have participated in and support the students.

F. Chicano/Latino Studies (CLS)

Mr. Jose Moreno, MSU graduate student, said that Dean Baba established a task force to investigate CLS issues CLS and CLS's director, Dr. Contreras. Dean Baba made the recommendation that Dr. Contreras not be removed as director. Mr. Moreno is concerned that there will be negative effects for those core faculty and students who spoke out against Dr. Contreras. Mr. Moreno said that power should be given back to the core faculty and graduate students have the expertise and commitment to the CLS program.

G. Chicano/Latino Studies (CLS)

Dr. Theresa Melendez, Associate Professor of English and former Director of CLS, said the Chicano/Latino community has a long history of activism. The current CLS program is one that is for the students, by the students, and of the students. The students created it and helped to put it together. Dr. Melendez said she was proud of the proactive students, both at the undergraduate and graduate levels. Dr. Melendez stated that Dean Baba allowed the students to follow a process and then did not support the committee recommendation as she said she would. She urged the Board to listen to the complaints of the students.

12. Request to Adjourn

On a motion by Trustee Ferguson, supported by Trustee Nugent, **THE BOARD VOTED to adjourn** at 11:40 a.m.

Respectfully submitted,



William R. Beekman  
Secretary of the Board of Trustees

**RESEARCH  
PRESENTATION  
TO THE MSU BOARD OF TRUSTEES**

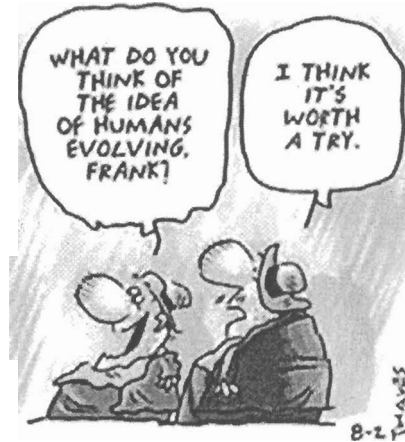
**SEPTEMBER 11, 2009**

**DR. RICHARD LENSKI  
COLLEGE OF NATURAL SCIENCE**

Facilitated by the Office of the Vice President for  
Research and Graduate Studies

# *Evolution in Action*

Richard Lenski

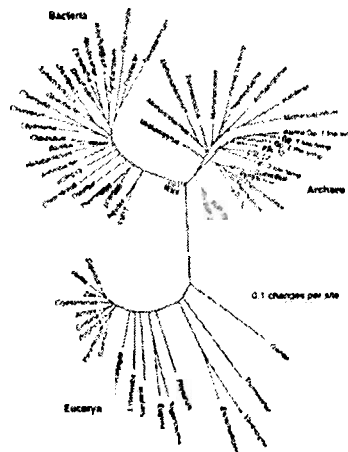


## How can we study evolution?

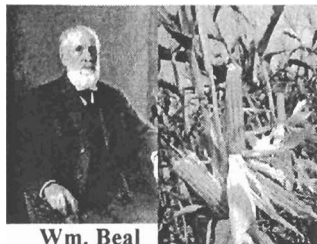
### *1. Fossils*



### *2. DNA & Tree of Life*

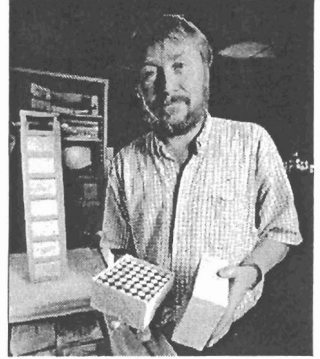
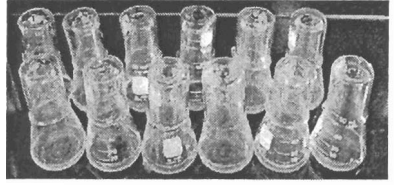


### *3. Evolution in Action*



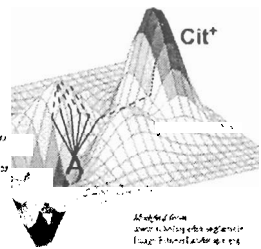
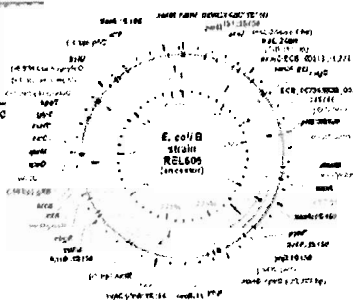
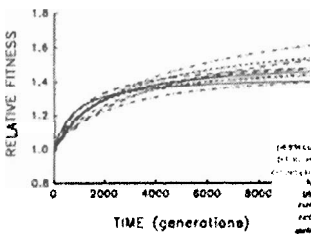
## Advantages of bacteria for evolution in action

- Fast generations.
- Large populations.
- *E. coli* well studied.
- Frozen “fossil record” → revivify and compete evolved cells against their own ancestors → time travel!
- Practical significance as agents of disease and in biotechnology.



## A quick look at a long-term evolution experiment

- Twelve populations started 1988, now near 50,000 generations.
- How much improvement, and how fast? How many mutations responsible for their improvement? How repeatable are these changes? How do new functions evolve?



Adapted from  
 Lenski et al. (1991) *Science*  
 252:1503-1505

## Why should we care about evolution?

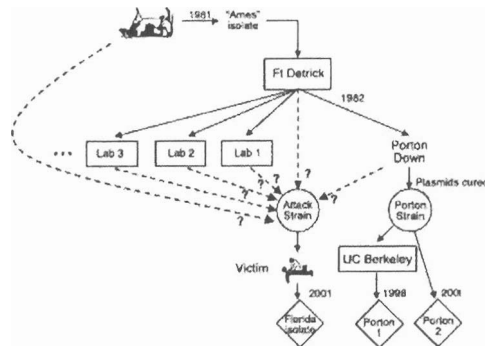
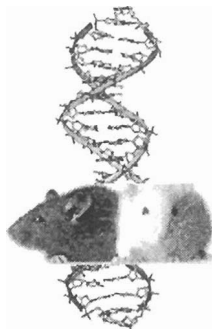
### 1. What's more *fascinating* than the process that produced the diversity of life?

- "There is grandeur in this view of life [that] from so simple a beginning endless forms most beautiful and most wonderful have been, and are being, evolved." – Charles Darwin, 1859
- On-going controversy reflecting *confusion* between science and religion.
- MSU's Rob Pennock, a philosopher of science, was expert witnesses at 2005 Dover, Pa., trial that rejected constitutionality of anti-science alternatives to evolution in public-school science classes.



### 2. Evolution *underlies* all biology, including biomedical sciences.

- Tree of Life allows one to *identify homologies* in DNA, and thus infer gene functions in humans from animal models.
- Evolutionary methods used to *trace source of pathogens*: new flu viruses (H1N1), food-associated outbreaks (*E. coli* O157:H7), and anthrax used in post-9/11 bioterrorism attacks.



### 3. Evolutionary principles can be *applied* to engineering.

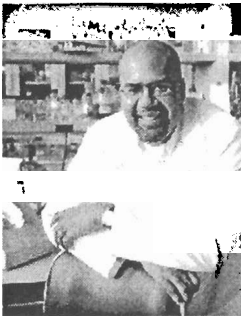
- “Natural selection ... will occur whenever and wherever three conditions are met: replication ... mutation ... competition.” — Daniel Dennett
- **Evolution can be harnessed** to produce useful functions in software, robotics and other realms of engineering.
- **Biology** – from evolution and animal behavior to genetics and neurosciences – **offers a deep toolbox of principles and processes** that can inform **computer science and engineering** in the decades ahead.
- We’ve formed an **interdisciplinary team** to pursue this bold opportunity.



# BEACON

An NSF Center\* for the  
Study of Evolution in Action

\*We're in Final 11 of 400+ applications  
still competing for 5-6 new centers ...



← **Paul Turner**  
Assoc. Prof. at  
Yale University

**Valeria Souza** →  
Prof. at UNAM  
(Mexico City)



← **Zachary Blount**  
MSU grad student  
*extraordinaire*

**Charles Ofria** →  
MSU Assoc. Prof.  
in Comp. Sci.



# MICHIGAN STATE UNIVERSITY

September 8, 2009

## MEMORANDUM

TO: Board of Trustees Policy Committee

FROM: Kim Wilcox, Provost

SUBJECT: Fall, 2009 Preliminary Enrollment Report

Enclosed is the preliminary Fall 2009 Enrollment Report. These data reflect university enrollments as of September 8, 2009. In the context of long-term planning, MSU's enrollment objective is to remain stable over time. While increases or decreases can be managed in any given year, long-term stability at approximately 46,600 students served through the East Lansing campus is essential to maintain the appropriate balance across academic programs, staff numbers, support functions, and facilities.

This year, estimated total university enrollment is 47,100, an increase of 450 students over the previous year. Of the total increase, approximately 415 students reflect a growth in the returning population. This increase is counter to expectations given the prolonged period of economic adversity. Nevertheless, it does demonstrate the value that students and their families place on globally competitive education at MSU and the relative strength of our financial aid.



OFFICE OF THE  
**PROVOST**

Michigan State University  
Administration Building  
East Lansing, Michigan  
48824-1046

FAX: 517/355-9601

New graduate and graduate professional enrollment increased by 154 students, largely attributable to medical programs in Southeastern Michigan. New undergraduates reflect an effort to stabilize enrollment within this category at no more than 7,050 to 7,200. Accordingly, the total number of new students decreased from the previous year by 119 students. Within the entering class, enrollment of students of color totaled 19.6 percent, a five year high. In sum, new enrollments contribute a net increase of 35 students.

The official enrollment count will occur the evening of September 28. I would be happy to respond to any questions you might have.

### Enclosure

C: Board of Trustees Finance Committee  
President Simon  
Mr. Beekman  
Mr. Noto  
Dr. Poston



**PRELIMINARY ENROLLMENT INFORMATION**  
**Fall 2009**

	TOTAL UNIVERSITY		
	2008 Actuals	2009 Preliminary	Difference
<b>Total</b>	<b>46,648</b>	<b>47,100</b>	<b>452</b>
<b>All Returning</b>	<b>35,578</b>	<b>35,995</b>	<b>417</b>
<b>All New</b>	<b>11,070</b>	<b>11,105</b>	<b>35</b>

	NEW UNDERGRADUATES			
	Maximum Target	Fall 2008	Fall 2009	Year to Year Difference
<b>Transfer</b>	<b>1,400</b>	<b>1,473</b>	<b>1,480</b>	<b>7</b>
<b>First Time</b>	<b>7,200</b>	<b>7,337</b>	<b>7,215</b>	<b>-122</b>
<b>Summer</b>	<b>45</b>	<b>49</b>	<b>45</b>	<b>-4</b>
<b>Total</b>	<b>8,645</b>	<b>8,859</b>	<b>8,740</b>	<b>-119</b>

**MICHIGAN STATE UNIVERSITY**  
**Preliminary Enrollment Report for the Board of Trustees**  
**September 8, 2009**

Fall enrollment figures are preliminary at this time. The official count will occur at the quarter of semester point on the evening of September 28, 2009. The following represent our best current estimates. This year's enrollment is expected to be within the range of 47,100, plus or minus 100 students. A final report will be circulated after the quarter of semester statistics are known.

Entering Class

- Demand for admission to MSU remains strong. A total of 25,392 applications were received this year, resulting in an entering first time Fall class of approximately 7,215. Summer first time admits total approximately 45 students.
- Grade points and test scores are similar to the last four entering classes. The high school GPA 25<sup>th</sup> to 75<sup>th</sup> percentile range is 3.4 to 3.8. The ACT 25<sup>th</sup> to 75<sup>th</sup> percentile range is 23 to 27.
- New College Achievement Admissions Program (CAAP) enrollment totals approximately 705 students. The program comprises about 9.7 percent of the entering class.
- Total Honors College enrollment is estimated at about 2,680. First time Honors College enrollment is estimated at 490 students. The Academic Scholars Program is enrolling approximately 200 new students this year. Together the first time Honors and Academic Scholars programs comprise 9.5 percent of the entering class.
- Michigan enrollments for the entering class total approximately 79 percent.
- New transfer enrollment of approximately 1,480 students is up slightly from the previous year.
- The MSU entering class and transfer enrollment total approximately 8,740 students, a slight decrease from the prior year.

Undergraduate and Graduate Students

- The proportion of female students to total undergraduate enrollment is expected to be approximately 52.3 percent.
- The resident proportion of total undergraduates is approximately 85 percent.

## Preliminary Enrollment Report Page 2.

- Total undergraduate enrollment is estimated to be 36,400, comparable with the previous year.
- At the graduate level, there are approximately 1,790 new master's and doctoral students. This is an increase from previous years.
- New graduate-professional enrollment totals approximately 575 students, which is consistent with the enrollment plan for the medical schools.
- Total graduate enrollment, including graduate professional students, is expected to approximate 10,700 students, almost 289 students greater than the previous year's total of 10,311.

### University

- This year's undergraduate entering class is expected to include 1,290 students of color, approximately 19.6 percent of the domestic total. The percentage has ranged from 17 to 21 in the past 10 years.
- Total university enrollment for students of color is estimated at 7,500 students or 17.8 percent of the domestic student body total.
- The enrollment mix between undergraduate, graduate and graduate professional students is expected to be 77.3 percent, 18.5 percent, and 4.2 percent, respectively.
- It is anticipated that the colleges of Social Science, Natural Science and the Broad College of Business will have the largest enrollments as of the official enrollment count date.
- The MSU College of Law new fall enrollment (full and part time) totals 288 students. Total enrollment is projected at 961 students, a slight decrease of approximately 3 students from the previous year's total of 964.

Final enrollment data will be provided following the official count at the end of September.



# TABLE OF CONTENTS

2. Table of Contents
3. Fall Semester Enrollment Trend
4. Fall Semester Enrollment Trend (With MSU College of Law)
5. Entering Class Enrollment Mix
6. First Time Undergraduate Apps, Admits and Enrollments
7. First time Undergraduate Academic Profile
8. First time Undergraduate Academic Profile - Lower Quartile
9. New CAAP as a Percentage of Entering Class
10. Honors College Fall Semester Enrollment
11. Transfer Students Source of Enrollments
12. Undergraduate Enrollment Mix
13. New Graduate Enrollment by Geographic Residency
14. New Graduate Professional Enrollment by Geographic Residency
15. New Graduate Professional Enrollment by Geographic Residency (With MSU College of Law )
16. Graduate Enrollment Mix
17. Graduate Professional Enrollment Mix
18. Graduate Professional Enrollment Mix (With MSU College of Law)
19. Entering Class by Ethnic Groups
20. Total Enrollment of Ethnic Groups
21. Total Enrollment of Ethnic Groups (With MSU College of Law)
22. Enrollment Mix
23. Enrollment Mix (With MSU College of Law)
24. MSU College of Law Full Time Applications, Admits, Enrollments and Entering Class Profile
25. MSU College of Law Part Time Applications, Admits, Enrollments and Entering Class Profile
26. MSU College of Law Total Enrollments



# FALL SEMESTER TOTAL ENROLLMENT TREND

<b>Fall 1998</b>	<b>43,189</b>
<b>Fall 1999</b>	<b>43,038</b>
<b>Fall 2000</b>	<b>43,366</b>
<b>Fall 2001</b>	<b>44,227</b>
<b>Fall 2002</b>	<b>44,937</b>
<b>Fall 2003</b>	<b>44,542</b>
<b>Fall 2004</b>	<b>44,836</b>
<b>Fall 2005</b>	<b>45,166</b>
<b>Fall 2006</b>	<b>45,520</b>
<b>Fall 2007</b>	<b>46,045</b>
<b>Fall 2008</b>	<b>46,648</b>
<b>Fall 2009*</b>	<b>47,100</b>

\*Preliminary



# FALL SEMESTER TOTAL ENROLLMENT TREND (WITH MSU COLLEGE OF LAW)\*\*

Fall 1998	43,189
Fall 1999	43,734
Fall 2000	44,070
Fall 2001	45,007
Fall 2002	45,756
Fall 2003	45,550
Fall 2004	45,930
Fall 2005	46,209
Fall 2006	46,454
Fall 2007	47,039
Fall 2008	47,612
Fall 2009*	48,061

\*\*Includes MSU College of  
Law from Fall 1999

\*Preliminary



# FIRST TIME UNDERGRADUATE APPS, ADMITS AND ENROLLMENTS

	1999	2000	2001	2002	2003	2004	2005	2006	2007	2008	2009*
<b>Apps</b>	22,623	22,709	24,246	25,210	24,973	21,834	21,844	23,247	24,436	25,589	25,392
<b>Admits</b>	16,084	15,643	15,812	16,977	17,690	17,343	16,686	17,046	18,040	17,919	18,404
<b>Enrollments</b>	6,528	6,824	6,767	6,886	6,849	7,362	7,266	7,210	7,318	7,337	7,215
<b>Entering Class</b>	6,574	6,873	6,810	6,949	6,905	7,412	7,314	7,256	7,373	7,378	7,260
<b>Admit Ratio</b>	71.1%	68.9%	65.2%	67.3%	70.8%	79.4%	76.4%	73.3%	73.8%	70.0%	72.5%
<b>Yield</b>	40.6%	43.6%	42.8%	40.6%	38.7%	42.4%	43.5%	42.3%	40.6%	40.9%	39.2%

Note that MSU's application changed in Fall 2004 to include a required personal statement  
Enrollments do not include Summer First time Undergraduates  
Entering Class includes Summer First Time Undergraduates

\*Preliminary





# ENTERING CLASS ENROLLMENT MIX

	Fall 1999	Fall 2000	Fall 2001	Fall 2002	Fall 2003	Fall 2004	Fall 2005	Fall 2006	Fall 2007	Fall 2008	Fall 2009*
<b>Female</b>	<b>3,759</b>	<b>3,854</b>	<b>3,885</b>	<b>3,964</b>	<b>3,961</b>	<b>4,108</b>	<b>4,185</b>	<b>4,107</b>	<b>4,111</b>	<b>4,117</b>	<b>3,890</b>
<b>%</b>	<b>57.2%</b>	<b>56.1%</b>	<b>57.0%</b>	<b>57.0%</b>	<b>57.4%</b>	<b>55.4%</b>	<b>57.2%</b>	<b>56.6%</b>	<b>55.8%</b>	<b>55.8%</b>	<b>53.6%</b>
<b>Non-Michigan</b>	<b>573</b>	<b>625</b>	<b>714</b>	<b>802</b>	<b>848</b>	<b>822</b>	<b>883</b>	<b>1,075</b>	<b>1,202</b>	<b>1,409</b>	<b>1,520</b>
<b>%</b>	<b>8.7%</b>	<b>9.1%</b>	<b>10.5%</b>	<b>11.5%</b>	<b>12.3%</b>	<b>11.1%</b>	<b>12.1%</b>	<b>14.8%</b>	<b>16.3%</b>	<b>19.1%</b>	<b>20.9%</b>
<b>Entering Class</b>											
<b>Total</b>	<b>6,574</b>	<b>6,873</b>	<b>6,810</b>	<b>6,949</b>	<b>6,905</b>	<b>7,412</b>	<b>7,314</b>	<b>7,256</b>	<b>7,373</b>	<b>7,378</b>	<b>7,260</b>

Entering Class includes Summer First Time Undergraduates

\*Preliminary



# FIRST TIME UNDERGRADUATE ACADEMIC PROFILE

	1999	2000	2001	2002	2003	2004	2005	2006	2007	2008	2009*	% 10 Yr Chg
<b>GPA</b>												
Mean (average)	3.44	3.48	3.52	3.55	3.58	3.55	3.58	3.61	3.59	3.61	3.60	4.7%
Q3 (75th percentile)	3.72	3.75	3.78	3.79	3.83	3.80	3.82	3.84	3.83	3.85	3.85	3.5%
Median (50th percentile)	3.46	3.50	3.54	3.58	3.61	3.56	3.60	3.63	3.62	3.64	3.64	5.2%
Q1 (25th percentile)	3.19	3.24	3.31	3.35	3.39	3.33	3.39	3.43	3.41	3.44	3.40	6.6%
<b>SAT COMBINED</b>												
Mean (average)	1,110	1,123	1,132	1,131	1,146	1,135	1,146	1,152	1,131	1,144	1,144	3.1%
Q3 (75th percentile)	1,220	1,230	1,240	1,240	1,260	1,240	1,260	1,270	1,240	1,260	1,240	1.6%
Median (50th percentile)	1,110	1,130	1,130	1,130	1,150	1,130	1,150	1,150	1,130	1,130	1,140	2.7%
Q1 (25th percentile)	990	1,020	1,030	1,020	1,040	1,030	1,030	1,040	1,020	1,030	1,030	4.0%
<b>ACT COMPOSITE</b>												
Mean (average)	23.7	23.9	24.0	24.2	24.5	24.3	24.4	24.6	24.9	24.8	24.9	5.1%
Q3 (75th percentile)	26	26	27	27	27	27	27	27	27	27.0	27.0	3.8%
Median (50th percentile)	24	24	24	24	25	24	24	25	25	25.0	25.0	4.2%
Q1 (25th percentile)	21	21	22	22	22	22	22	22	23	23.0	23.0	9.5%

\*Preliminary



# FIRST TIME UNDERGRADUATE ACADEMIC PROFILE – LOWER QUARTILE

	1999	2000	2001	2002	2003	2004	2005	2006	2007	2008	2009*	% 10 Yr Chg
<b>GRADE-POINT- AVERAGE</b>												
25th percentile	3.19	3.24	3.31	3.35	3.39	3.33	3.39	3.43	3.44	3.44	3.40	6.6%
10th percentile	2.98	3.01	3.08	3.09	3.15	3.12	3.14	3.18	3.20	3.19	3.14	5.4%
5th percentile	2.83	2.85	2.91	2.90	2.95	2.96	2.95	2.98	3.00	2.98	2.95	4.2%
<b>ACT COMPOSITE</b>												
25th percentile	21	21	22	22	22	22	22	22	23	23	23	9.5%
10th percentile	19	19	19	19	19	19	20	20	21	20	20	5.3%
5th percentile	17	18	18	18	18	18	18	18	19	18	18	5.9%

\*Preliminary



# NEW CAAP AS A PERCENTAGE OF ENTERING CLASS

	1999	2000	2001	2002	2003	2004	2005	2006	2007	2008	2009*
<b>CAAP</b>	350	336	425	474	482	536	624	574	625	679	705
<b>ENTERING CLASS</b>	6,574	6,873	6,810	6,949	6,905	7,412	7,314	7,256	7,373	7,378	7,260
<b>% CAAP</b>	5.3%	4.9%	6.2%	6.8%	7.0%	7.2%	8.5%	7.9%	8.5%	9.2%	9.7%

\*Preliminary



# HONORS COLLEGE FALL SEMESTER ENROLLMENT

	1999	2000	2001	2002	2003	2004	2005	2006	2007	2008	2009*
<b>New Honors</b>	<b>383</b>	<b>422</b>	<b>489</b>	<b>431</b>	<b>491</b>	<b>447</b>	<b>477</b>	<b>491</b>	<b>465</b>	<b>499</b>	<b>490</b>
<b>% Entering Class</b>	<b>5.8%</b>	<b>6.1%</b>	<b>7.2%</b>	<b>6.2%</b>	<b>7.1%</b>	<b>6.0%</b>	<b>6.5%</b>	<b>6.8%</b>	<b>6.3%</b>	<b>6.8%</b>	<b>6.7%</b>
<b>Total Honors</b>	<b>1,838</b>	<b>2,059</b>	<b>2,286</b>	<b>2,398</b>	<b>2,574</b>	<b>2,699</b>	<b>2,662</b>	<b>2,669</b>	<b>2,683</b>	<b>2,770</b>	<b>2,680</b>
<b>% Undergraduate</b>	<b>5.4%</b>	<b>6.0%</b>	<b>6.6%</b>	<b>6.8%</b>	<b>7.4%</b>	<b>7.6%</b>	<b>7.5%</b>	<b>7.5%</b>	<b>7.4%</b>	<b>7.6%</b>	<b>7.4%</b>
<b>New Academic Scholars</b>			<b>119</b>	<b>175</b>	<b>215</b>	<b>216</b>	<b>196</b>	<b>209</b>	<b>233</b>	<b>192</b>	<b>200</b>
<b>% Entering Class</b>			<b>1.7%</b>	<b>2.5%</b>	<b>3.1%</b>	<b>2.9%</b>	<b>2.7%</b>	<b>2.9%</b>	<b>3.2%</b>	<b>2.6%</b>	<b>2.8%</b>
<b>Entering Class</b>	<b>6,574</b>	<b>6,873</b>	<b>6,810</b>	<b>6,949</b>	<b>6,905</b>	<b>7,412</b>	<b>7,314</b>	<b>7,256</b>	<b>7,373</b>	<b>7,378</b>	<b>7,260</b>
<b>Undergraduate</b>	<b>33,966</b>	<b>34,342</b>	<b>34,874</b>	<b>35,197</b>	<b>34,853</b>	<b>35,408</b>	<b>35,650</b>	<b>35,821</b>	<b>36,072</b>	<b>36,337</b>	<b>36,400</b>

\*Preliminary



# TRANSFER STUDENTS SOURCE OF ENROLLMENTS

	1999	2000	2001	2002	2003	2004	2005	2006	2007	2008	2009*
<b>Two Year Institutions</b>	<b>1,046</b>	<b>1,013</b>	<b>1,049</b>	<b>932</b>	<b>955</b>	<b>949</b>	<b>904</b>	<b>865</b>	<b>834</b>	<b>846</b>	<b>830</b>
<b>Four Year Institutions</b>	<b>757</b>	<b>753</b>	<b>825</b>	<b>700</b>	<b>690</b>	<b>733</b>	<b>607</b>	<b>615</b>	<b>567</b>	<b>627</b>	<b>650</b>
<b>Total</b>	<b>1,803</b>	<b>1,766</b>	<b>1,874</b>	<b>1,632</b>	<b>1,645</b>	<b>1,682</b>	<b>1,511</b>	<b>1,480</b>	<b>1,401</b>	<b>1,473</b>	<b>1,480</b>
<b>% Two Year</b>	<b>58.0%</b>	<b>57.4%</b>	<b>56.0%</b>	<b>57.1%</b>	<b>58.1%</b>	<b>56.4%</b>	<b>59.8%</b>	<b>58.4%</b>	<b>59.5%</b>	<b>57.4%</b>	<b>56.1%</b>

\*Preliminary



# UNDERGRADUATE ENROLLMENT MIX

	Fall 1999	Fall 2000	Fall 2001	Fall 2002	Fall 2003	Fall 2004	Fall 2005	Fall 2006	Fall 2007	Fall 2008	Fall 2009*
<b>Female</b>	18,113	18,258	18,631	18,776	18,664	18,796	19,118	19,264	19,205	19,264	19,050
%	53.3%	53.2%	53.4%	53.3%	53.6%	53.1%	53.6%	53.8%	53.2%	53.0%	52.3%
<b>Non-Michigan</b>	2,846	2,930	3,010	3,192	3,392	3,557	3,731	4,014	4,452	5,110	5,580
%	8.4%	8.5%	8.6%	9.1%	9.7%	10.0%	10.5%	11.2%	12.3%	14.1%	15.3%
<b>Undergraduate</b>											
<b>Total</b>	33,966	34,342	34,874	35,197	34,853	35,408	35,678	35,821	36,072	36,337	36,400

\*Preliminary



# NEW GRADUATE ENROLLMENT BY GEOGRAPHIC RESIDENCY

	1999	2000	2001	2002	2003	2004	2005	2006	2007	2008	2009*
<b>In State</b>	819	810	781	836	813	707	798	886	848	878	835
<b>Non-Michigan</b>	719	739	783	854	793	803	825	792	786	859	955
<b>Total</b>	1,538	1,549	1,564	1,690	1,606	1,510	1,623	1,678	1,634	1,737	1,790
<b>In State</b>	53.3%	52.3%	49.9%	49.5%	50.6%	46.8%	49.2%	52.8%	51.9%	50.5%	46.6%
<b>Non-Michigan</b>	46.7%	47.7%	50.1%	50.5%	49.4%	53.2%	50.8%	47.2%	48.1%	49.5%	53.4%
<b>Total</b>	100.0%	100.0%	100.0%	100.0%	100.0%	100.0%	100.0%	100.0%	100.0%	100.0%	100.0%

**Note: Data prior to 2009 includes correction to data originally displayed in reports.**

\*Preliminary





# NEW GRADUATE PROFESSIONAL ENROLLMENT BY GEOGRAPHIC RESIDENCY

	1999	2000	2001	2002	2003	2004	2005	2006	2007	2008	2009*
<b>In State</b>	281	289	280	295	293	300	361	346	372	389	480
<b>Non-Michigan</b>	51	51	47	55	64	70	59	74	104	85	95
<b>Total</b>	332	340	327	350	357	370	420	420	476	474	575
<b>In State</b>	84.6%	85.0%	85.6%	84.3%	82.1%	81.1%	86.0%	82.4%	78.2%	82.1%	83.5%
<b>Non-Michigan</b>	15.4%	15.0%	14.4%	15.7%	17.9%	18.9%	14.0%	17.6%	21.8%	17.9%	16.5%
<b>Total</b>	100.0%	100.0%	100.0%	100.0%	100.0%	100.0%	100.0%	100.0%	100.0%	100.0%	100.0%

\*Preliminary



# NEW GRADUATE PROFESSIONAL ENROLLMENT BY GEOGRAPHIC RESIDENCY (WITH MSU COLLEGE OF LAW)

	1999 <sup>^</sup>	2000 <sup>^</sup>	2001 <sup>^</sup>	2002 <sup>^</sup>	2003 <sup>^</sup>	2004 <sup>^</sup>	2005 <sup>^</sup>	2006 <sup>^</sup>	2007 <sup>^</sup>	2008 <sup>^</sup>	2009 <sup>^*</sup>
<b>In State</b>	452	467	485	460	554	521	530	518	608	546	630
<b>Non-Michigan</b>	93	109	92	186	179	181	170	171	260	217	230
<b>Total</b>	545	576	577	646	733	702	700	689	868	763	860
<b>In State</b>	82.9%	81.1%	84.1%	71.2%	75.6%	74.2%	75.7%	75.2%	70.0%	71.6%	73.3%
<b>Non-Michigan</b>	17.1%	18.9%	15.9%	28.8%	24.4%	25.8%	24.3%	24.8%	30.0%	28.4%	26.7%
<b>Total</b>	100.0%	100.0%	100.0%	100.0%	100.0%	100.0%	100.0%	100.0%	100.0%	100.0%	100.0%

<sup>^</sup>Includes MSU College of Law

\*Preliminary



# GRADUATE ENROLLMENT MIX

	Fall 1999	Fall 2000	Fall 2001	Fall 2002	Fall 2003	Fall 2004	Fall 2005	Fall 2006	Fall 2007	Fall 2008	Fall 2009*
<b>Female</b>	4,167	4,213	4,392	4,578	4,614	4,490	4,552	4,575	4,617	4,795	4,920
<b>%</b>	53.9%	55.0%	55.1%	54.8%	55.5%	55.8%	56.9%	56.5%	55.9%	56.5%	56.5%
<b>Non-Michigan</b>	3,444	3,443	3,574	3,799	3,869	3,796	3,769	3,980	4,149	4,206	4,315
<b>%</b>	44.5%	45.0%	44.8%	45.5%	46.6%	47.2%	47.1%	49.1%	50.2%	49.5%	49.5%
<b>Graduate</b>											
<b>Total</b>	7,732	7,657	7,975	8,349	8,309	8,040	7,996	8,099	8,265	8,489	8,710

\*Preliminary



# GRADUATE PROFESSIONAL ENROLLMENT MIX

	Fall 1999	Fall 2000	Fall 2001	Fall 2002	Fall 2003	Fall 2004	Fall 2005	Fall 2006	Fall 2007	Fall 2008	Fall 2009*
Female	789	810	855	857	871	885	919	986	1,034	1,070	1,140
%	58.9%	59.3%	62.0%	61.6%	63.1%	63.8%	61.6%	61.6%	60.5%	58.7%	57.3%
Non-Michigan	182	186	185	200	211	223	238	260	312	321	345
%	13.6%	13.6%	13.4%	14.4%	15.3%	16.1%	16.0%	16.3%	18.3%	17.6%	17.3%
Graduate Professional Total	1,340	1,367	1,378	1,391	1,380	1,388	1,492	1,600	1,708	1,822	1,990

\*Preliminary



# GRADUATE PROFESSIONAL ENROLLMENT MIX (WITH MSU COLLEGE OF LAW)

	Fall 1999^	Fall 2000^	Fall 2001^	Fall 2002^	Fall 2003^	Fall 2004^	Fall 2005^	Fall 2006^	Fall 2007^	Fall 2008^	Fall 2009^*
<b>Female</b>	1,064	1,111	1,199	1,220	1,312	1,369	1,389	1403	1,454	1,450	1,517
<b>%</b>	52.3%	53.6%	55.6%	55.2%	54.9%	55.2%	54.8%	55.4%	53.8%	52.0%	51.4%
<b>Non-Michigan</b>	340	329	354	427	503	590	610	594	714	723	759
<b>%</b>	16.7%	15.9%	16.4%	19.3%	21.1%	23.8%	24.1%	23.4%	26.4%	26.0%	25.7%
<b>Graduate Professional Total</b>	2,036	2,071	2,158	2,210	2,388	2,482	2,535	2,534	2,702	2,786	2,951

^Includes MSU College of Law

\*Preliminary



# ENTERING CLASS BY ETHNIC GROUPS

	1999	2000	2001	2002	2003	2004	2005	2006	2007	2008	2009*
<b>African American</b>	691	711	687	707	649	651	701	639	618	584	625
<b>Asian/Pacific Island</b>	318	402	400	426	393	386	409	433	350	373	400
<b>Chicano/Oth Hispanic</b>	190	183	224	244	216	206	225	228	228	208	215
<b>Native American</b>	49	45	66	57	45	48	52	46	52	39	50
<b>Total Students of Color</b>	1,248	1,341	1,377	1,434	1,303	1,291	1,387	1,346	1,248	1,204	1,290
<b>Unknown/Not Reported</b>	37	43	62	33	48	79	62	92	138	149	140
<b>White</b>	5,194	5,374	5,238	5,340	5,400	5,858	5,663	5,555	5,609	5,417	5,155
<b>Domestic Total</b>	6,479	6,758	6,677	6,807	6,751	7,228	7,112	6,993	6,995	6,770	6,585
<b>International</b>	95	115	133	142	154	184	202	263	378	608	675
<b>Total</b>	6,574	6,873	6,810	6,949	6,905	7,412	7,314	7,256	7,373	7,378	7,260
<b>PERCENT BY TOTAL</b>											
<b>African American</b>	10.5%	10.3%	10.1%	10.2%	9.4%	8.8%	9.6%	8.8%	8.4%	7.9%	8.6%
<b>Asian/Pacific Island</b>	4.8%	5.8%	5.9%	6.1%	5.7%	5.2%	5.6%	6.0%	4.7%	5.1%	5.5%
<b>Chicano/Oth Hispanic</b>	2.9%	2.7%	3.3%	3.5%	3.1%	2.8%	3.1%	3.1%	3.1%	2.8%	3.0%
<b>Native American</b>	0.7%	0.7%	1.0%	0.8%	0.7%	0.6%	0.7%	0.6%	0.7%	0.5%	0.7%
<b>Total Students of Color</b>	19.0%	19.5%	20.2%	20.7%	18.9%	17.4%	19.0%	18.6%	16.9%	16.3%	17.8%
<b>Unknown/Not Reported</b>	0.6%	0.6%	0.9%	0.5%	0.7%	1.1%	0.8%	1.3%	1.9%	2.0%	1.9%
<b>White</b>	79.0%	78.2%	76.9%	76.8%	78.2%	79.0%	77.4%	76.6%	76.1%	73.4%	71.0%
<b>International</b>	1.4%	1.7%	2.0%	2.0%	2.2%	2.5%	2.8%	3.6%	5.1%	8.2%	9.3%
<b>Total</b>	100.0%	100.0%	100.0%	100.1%	100.0%	100.0%	100.0%	100.0%	100.0%	100.0%	100.0%
<b>PERCENT BY DOMESTIC</b>											
<b>African American</b>	10.7%	10.5%	10.3%	10.4%	9.6%	9.0%	9.9%	9.1%	8.8%	8.6%	9.5%
<b>Asian/Pacific Island</b>	4.9%	5.9%	6.0%	6.3%	5.8%	5.3%	5.8%	6.2%	5.0%	5.5%	6.1%
<b>Chicano/Oth Hispanic</b>	2.9%	2.7%	3.4%	3.6%	3.2%	2.9%	3.2%	3.3%	3.3%	3.1%	3.3%
<b>Native American</b>	0.8%	0.7%	1.0%	0.8%	0.7%	0.7%	0.7%	0.7%	0.7%	0.6%	0.8%
<b>Total Students of Color</b>	19.3%	19.8%	20.6%	21.1%	19.3%	17.9%	19.5%	19.2%	17.8%	17.8%	19.6%
<b>Unknown/Not Reported</b>	0.6%	0.6%	0.9%	0.5%	0.7%	1.1%	0.9%	1.3%	2.0%	2.2%	2.1%
<b>White</b>	80.2%	79.5%	78.4%	78.4%	80.0%	81.0%	79.6%	79.4%	80.2%	80.0%	78.3%
<b>Domestic Total</b>	100.0%	100.0%	100.0%	100.0%	100.0%	100.0%	100.0%	100.0%	100.0%	100.0%	100.0%

\*Preliminary



# TOTAL ENROLLMENT OF ETHNIC GROUPS

	1999	2000	2001	2002	2003	2004	2005	2006	2007	2008	2009*
<b>African American</b>	3,507	3,546	3,639	3,675	3,604	3,484	3,552	3,523	3,408	3,392	3,425
<b>Asian/Pacific Island</b>	1,733	1,883	2,036	2,196	2,283	2,349	2,392	2,388	2,368	2,361	2,400
<b>Chicano/Oth Hispanic</b>	1,073	1,081	1,178	1,220	1,246	1,266	1,317	1,360	1,309	1,337	1,355
<b>Native American</b>	257	261	279	298	287	294	341	310	329	325	320
<b>Total Students of Color</b>	6,570	6,771	7,132	7,389	7,420	7,393	7,602	7,581	7,414	7,415	7,500
<b>Unknown/Not Reported</b>	293	312	375	353	386	455	504	543	744	915	1,030
<b>White</b>	33,427	33,395	33,699	33,993	33,459	33,673	33,765	33,869	34,018	33,809	33,620
<b>Domestic Total</b>	40,290	40,478	41,206	41,735	41,265	41,521	41,871	41,993	42,176	42,139	42,150
<b>International</b>	2,748	2,888	3,021	3,202	3,277	3,315	3,295	3,527	3,869	4,509	4,950
<b>Total</b>	43,038	43,366	44,227	44,937	44,542	44,836	45,166	45,520	46,045	46,648	47,100
<b>PERCENT BY TOTAL</b>											
<b>African American</b>	8.1%	8.2%	8.2%	8.2%	8.1%	7.8%	7.9%	7.7%	7.4%	7.3%	7.3%
<b>Asian/Pacific Island</b>	4.0%	4.3%	4.6%	4.9%	5.1%	5.2%	5.3%	5.2%	5.1%	5.1%	5.1%
<b>Chicano/Oth Hispanic</b>	2.5%	2.5%	2.7%	2.7%	2.8%	2.8%	2.9%	3.0%	2.8%	2.9%	2.9%
<b>Native American</b>	0.6%	0.6%	0.6%	0.7%	0.6%	0.7%	0.8%	0.7%	0.7%	0.7%	0.7%
<b>Total Students of Color</b>	15.3%	15.6%	16.1%	16.4%	16.7%	16.5%	16.8%	16.7%	16.1%	15.9%	15.9%
<b>Unknown/Not Reported</b>	0.7%	0.7%	0.8%	0.8%	0.9%	1.0%	1.1%	1.2%	1.6%	2.0%	2.2%
<b>White</b>	77.7%	77.0%	76.2%	75.6%	75.1%	75.1%	74.8%	74.4%	73.9%	72.5%	71.4%
<b>International</b>	6.4%	6.7%	6.8%	7.1%	7.4%	7.4%	7.3%	7.7%	8.4%	9.7%	10.5%
<b>Total</b>	100.0%	100.0%	100.0%	100.0%	100.0%	100.0%	100.0%	100.0%	100.0%	100.0%	100.0%
<b>PERCENT BY DOMESTIC</b>											
<b>African American</b>	8.7%	8.8%	8.8%	8.8%	8.7%	8.4%	8.5%	8.4%	8.1%	8.0%	8.1%
<b>Asian/Pacific Island</b>	4.3%	4.7%	4.9%	5.3%	5.5%	5.7%	5.7%	5.7%	5.6%	5.6%	5.7%
<b>Chicano/Oth Hispanic</b>	2.7%	2.7%	2.9%	2.9%	3.0%	3.0%	3.1%	3.2%	3.1%	3.2%	3.2%
<b>Native American</b>	0.6%	0.6%	0.7%	0.7%	0.7%	0.7%	0.8%	0.7%	0.8%	0.8%	0.8%
<b>Total Students of Color</b>	16.3%	16.7%	17.3%	17.7%	18.0%	17.8%	18.2%	18.1%	17.6%	17.6%	17.8%
<b>Unknown/Not Reported</b>	0.7%	0.8%	0.9%	0.8%	0.9%	1.1%	1.2%	1.3%	1.8%	2.2%	2.4%
<b>White</b>	83.0%	82.5%	81.8%	81.4%	81.1%	81.1%	80.6%	80.7%	80.7%	80.2%	79.8%
<b>Domestic Total</b>	100.0%	100.0%	100.0%	100.0%	100.0%	100.0%	100.0%	100.0%	100.0%	100.0%	100.0%

\*Preliminary



# TOTAL ENROLLMENT OF ETHNIC GROUPS (WITH MSU COLLEGE OF LAW)

	1999 <sup>^</sup>	2000 <sup>^</sup>	2001 <sup>^</sup>	2002 <sup>^</sup>	2003 <sup>^</sup>	2004 <sup>^</sup>	2005 <sup>^</sup>	2006 <sup>^</sup>	2007 <sup>^</sup>	2008 <sup>^</sup>	2009 <sup>^*</sup>
<b>African American</b>	3,559	3,606	3,704	3,723	3,656	3,542	3,598	3,573	3,454	3,431	3,465
<b>Asian/Pacific Island</b>	1,756	1,926	2,085	2,225	2,321	2,399	2,432	2,433	2,419	2,395	2,435
<b>Chicano/Oth Hispanic</b>	1,087	1,096	1,192	1,230	1,258	1,282	1,340	1,385	1,341	1,359	1,376
<b>Native American</b>	264	265	286	303	291	300	352	323	342	337	334
<b>Total Students of Color</b>	6,666	6,893	7,267	7,481	7,526	7,523	7,722	7,714	7,556	7,522	7,610
<b>Unknown/Not Reported</b>	306	324	385	365	396	472	514	564	780	1,015	1,147
<b>White</b>	33,983	33,965	34,334	34,655	34,295	34,574	34,636	34,597	34,775	34,508	34,299
<b>Domestic Total</b>	40,955	41,182	41,986	42,501	42,217	42,569	42,872	42,875	43,111	43,045	43,056
<b>International</b>	2,779	2,888	3,021	3,255	3,333	3,361	3,337	3,579	3,928	4,567	5,005
<b>Total</b>	43,734	44,070	45,007	45,756	45,550	45,930	46,209	46,454	47,039	47,612	48,061
<b>PERCENT BY TOTAL</b>											
<b>African American</b>	8.1%	8.2%	8.2%	8.1%	8.0%	7.7%	7.8%	7.7%	7.3%	7.2%	7.2%
<b>Asian/Pacific Island</b>	4.0%	4.4%	4.6%	4.9%	5.1%	5.2%	5.3%	5.2%	5.1%	5.0%	5.1%
<b>Chicano/Oth Hispanic</b>	2.5%	2.5%	2.6%	2.7%	2.8%	2.8%	2.9%	3.0%	2.9%	2.9%	2.9%
<b>Native American</b>	0.6%	0.6%	0.6%	0.7%	0.6%	0.7%	0.8%	0.7%	0.7%	0.7%	0.7%
<b>Total Students of Color</b>	15.2%	15.6%	16.1%	16.3%	16.5%	16.4%	16.7%	16.6%	16.1%	15.8%	15.8%
<b>Unknown/Not Reported</b>	0.7%	0.7%	0.9%	0.8%	0.9%	1.0%	1.1%	1.2%	1.7%	2.1%	2.4%
<b>White</b>	77.7%	77.1%	76.3%	75.7%	75.3%	75.3%	75.0%	74.5%	73.9%	72.5%	71.4%
<b>International</b>	6.4%	6.6%	6.7%	7.1%	7.3%	7.3%	7.2%	7.7%	8.4%	9.6%	10.4%
<b>Total</b>	100.0%	100.0%	100.0%	100.0%	100.0%	100.0%	100.0%	100.0%	100.0%	100.0%	100.0%
<b>PERCENT BY DOMESTIC</b>											
<b>African American</b>	8.7%	8.8%	8.8%	8.8%	8.7%	8.3%	8.4%	8.3%	8.0%	8.0%	8.0%
<b>Asian/Pacific Island</b>	4.3%	4.7%	5.0%	5.2%	5.5%	5.6%	5.7%	5.7%	5.6%	5.6%	5.7%
<b>Chicano/Oth Hispanic</b>	2.7%	2.7%	2.8%	2.9%	3.0%	3.0%	3.1%	3.2%	3.1%	3.2%	3.2%
<b>Native American</b>	0.6%	0.6%	0.7%	0.7%	0.7%	0.7%	0.8%	0.8%	0.8%	0.8%	0.8%
<b>Total Students of Color</b>	16.3%	16.7%	17.3%	17.6%	17.8%	17.7%	18.0%	18.0%	17.5%	17.5%	17.7%
<b>Unknown/Not Reported</b>	0.7%	0.8%	0.9%	0.9%	0.9%	1.1%	1.2%	1.3%	1.8%	2.4%	2.7%
<b>White</b>	83.0%	82.5%	81.8%	81.5%	81.2%	81.2%	80.8%	80.7%	80.7%	80.2%	79.7%
<b>Domestic Total</b>	100.0%	100.0%	100.0%	100.0%	100.0%	100.0%	100.0%	100.0%	100.0%	100.0%	100.0%

\*Preliminary  
^Includes MSU College of Law





# ENROLLMENT MIX

	Fall	Fall	Fall	Fall	Fall	Fall	Fall	Fall	Fall	Fall	Fall
Levels	1999	2000	2001	2002	2003	2004	2005	2006	2007	2008	2009*
<b>Undergraduate</b>	<b>33,966</b>	<b>34,342</b>	<b>34,874</b>	<b>35,197</b>	<b>34,853</b>	<b>35,408</b>	<b>35,678</b>	<b>35,821</b>	<b>36,072</b>	<b>36,337</b>	<b>36,400</b>
<b>%</b>	<b>78.9%</b>	<b>79.2%</b>	<b>78.9%</b>	<b>78.3%</b>	<b>78.2%</b>	<b>79.0%</b>	<b>79.0%</b>	<b>78.7%</b>	<b>78.3%</b>	<b>77.9%</b>	<b>77.3%</b>
<b>Graduate</b>	<b>7,732</b>	<b>7,657</b>	<b>7,975</b>	<b>8,349</b>	<b>8,309</b>	<b>8,040</b>	<b>7,996</b>	<b>8,099</b>	<b>8,265</b>	<b>8,489</b>	<b>8,710</b>
<b>%</b>	<b>18.0%</b>	<b>17.7%</b>	<b>18.0%</b>	<b>18.6%</b>	<b>18.7%</b>	<b>17.9%</b>	<b>17.7%</b>	<b>17.8%</b>	<b>17.9%</b>	<b>18.2%</b>	<b>18.5%</b>
<b>Graduate</b>											
<b>Professional</b>	<b>1,340</b>	<b>1,367</b>	<b>1,378</b>	<b>1,391</b>	<b>1,380</b>	<b>1,388</b>	<b>1,492</b>	<b>1,600</b>	<b>1,708</b>	<b>1,822</b>	<b>1,990</b>
<b>%</b>	<b>3.1%</b>	<b>3.1%</b>	<b>3.1%</b>	<b>3.1%</b>	<b>3.1%</b>	<b>3.1%</b>	<b>3.3%</b>	<b>3.5%</b>	<b>3.7%</b>	<b>3.9%</b>	<b>4.2%</b>
<b>Total</b>	<b>43,038</b>	<b>43,366</b>	<b>44,227</b>	<b>44,937</b>	<b>44,542</b>	<b>44,836</b>	<b>45,166</b>	<b>45,520</b>	<b>46,045</b>	<b>46,648</b>	<b>47,100</b>

\*Preliminary



# ENROLLMENT MIX (WITH MSU COLLEGE OF LAW)

<b>Undergraduate</b>	<b>33,966</b>	<b>34,342</b>	<b>34,874</b>	<b>35,197</b>	<b>34,853</b>	<b>35,408</b>	<b>35,678</b>	<b>35,821</b>	<b>36,072</b>	<b>36,337</b>	<b>36,400</b>
<b>%</b>	<b>77.7%</b>	<b>77.9%</b>	<b>77.5%</b>	<b>76.9%</b>	<b>76.5%</b>	<b>77.1%</b>	<b>77.2%</b>	<b>77.1%</b>	<b>76.7%</b>	<b>76.3%</b>	<b>75.7%</b>
<b>Graduate</b>	<b>7,732</b>	<b>7,657</b>	<b>7,975</b>	<b>8,349</b>	<b>8,309</b>	<b>8,040</b>	<b>7,996</b>	<b>8,099</b>	<b>8,265</b>	<b>8,489</b>	<b>8,710</b>
<b>%</b>	<b>17.7%</b>	<b>17.4%</b>	<b>17.7%</b>	<b>18.2%</b>	<b>18.2%</b>	<b>17.5%</b>	<b>17.3%</b>	<b>17.4%</b>	<b>17.6%</b>	<b>17.8%</b>	<b>18.1%</b>
<b>Graduate</b>											
<b>Professional</b>	<b>2,036</b>	<b>2,071</b>	<b>2,158</b>	<b>2,210</b>	<b>2,388</b>	<b>2,482</b>	<b>2,535</b>	<b>2,534</b>	<b>2,702</b>	<b>2,786</b>	<b>2,951</b>
<b>%</b>	<b>4.7%</b>	<b>3.1%</b>	<b>4.8%</b>	<b>4.8%</b>	<b>5.2%</b>	<b>5.4%</b>	<b>5.5%</b>	<b>5.5%</b>	<b>5.7%</b>	<b>5.9%</b>	<b>6.1%</b>
<b>Total</b>	<b>43,734</b>	<b>44,070</b>	<b>45,007</b>	<b>45,756</b>	<b>45,550</b>	<b>45,930</b>	<b>46,209</b>	<b>46,454</b>	<b>47,039</b>	<b>47,612</b>	<b>48,061</b>

^Includes MSU College of Law

\*Preliminary

23



# MSU College of Law

## Full Time Applications, Admits, Enrollments and Entering Class Profile

Full Time:	Fall 2000	Fall 2001	Fall 2002	Fall 2003	Fall 2004	Fall 2005	Fall 2006	Fall 2007	Fall 2008	Fall 2009*
Applications	922	1,043	1,434	2,016	2,151	2,473	2,492	1,622	1,686	2,547
Admits	541	631	766	854	757	876	1,002	678	883	1,214
Matriculants	176	200	250	294	243	197	190	193	232	264
Mean GPA	3.12	3.09	3.16	3.19	3.31	3.30	3.36	3.45	3.43	3.37
75% GPA	3.42	3.41	3.51	3.48	3.58	3.66	3.67	3.64	3.65	3.61
25% GPA	2.83	2.87	2.91	2.94	3.08	3.04	3.05	3.21	3.16	3.08
Mean LSAT	152	152	154	156	157	157	157	158	156	156
75% LSAT	156	157	158	159	159	161	160	161	159	159
25% LSAT	148	147	150	152	154	155	155	155	154	153

\*Preliminary



# MSU College of Law

## Part Time Applications, Admits, Enrollments and Entering Class Profile

	Fall 2000	Fall 2001	Fall 2002	Fall 2003	Fall 2004	Fall 2004	Fall 2006	Fall 2007	Fall 2008	Fall 2009*
<b>Part Time:</b>										
<b>Applications</b>	152	157	155	242	249	268	255	315	313	189
<b>Admits</b>	80	89	89	142	142	134	139	251	226	52
<b>Matriculants</b>	51	50	46	82	89	83	79	200	84	24
<b>Mean GPA</b>	3.03	2.98	3.14	3.14	3.18	3.30	3.26	3.13	3.15	3.06
<b>75% GPA</b>	3.23	3.39	3.44	3.50	3.54	3.56	3.53	3.39	3.28	3.56
<b>25% GPA</b>	2.69	2.58	2.92	2.89	2.95	3.07	3.07	2.91	2.87	2.73
<b>Mean LSAT</b>	153	151	153	152	152	152	151	151	150	149
<b>75% LSAT</b>	156	156	157	153	155	153	154	153	153	154
<b>25% LSAT</b>	148	147	149	149	149	150	149	149	149	145

\*Preliminary



# MSU College of Law Total Enrollments

	Fall 2000	Fall 2001	Fall 2002	Fall 2003	Fall 2004	Fall 2005	Fall 2006	Fall 2007	Fall 2008	Fall 2009*
<b>Juris Doctor</b>										
<b>Full Time</b>	<b>543</b>	<b>596</b>	<b>660</b>	<b>798</b>	<b>873</b>	<b>824</b>	<b>725</b>	<b>684</b>	<b>808</b>	<b>895</b>
<b>Part Time</b>	<b>161</b>	<b>184</b>	<b>159</b>	<b>210</b>	<b>221</b>	<b>219</b>	<b>209</b>	<b>310</b>	<b>156</b>	<b>66</b>
<b>Master of Laws</b>				<b>6</b>	<b>9</b>	<b>6</b>	<b>5</b>	<b>4</b>	<b>3</b>	<b>8</b>
<b>Master of Jurisprudence</b>						<b>2</b>	<b>2</b>	<b>1</b>	<b>0</b>	<b>0</b>
<b>JD/Bachelor of Laws</b>				<b>6</b>	<b>3</b>	<b>19</b>	<b>13</b>	<b>13</b>	<b>7</b>	<b>8</b>

\*Preliminary



**MICHIGAN STATE**  
**U N I V E R S I T Y**

September 3, 2009

MEMORANDUM

TO: Trustee Policy Committee

FROM: Kim A. Wilcox, Provost



SUBJECT: Fall Welcome 2009

As you know, Dean Estry has revised the first year experience for our students beginning with their admission to the University and continuing throughout their freshman year. A key aspect of those changes is a reworking of the Fall Welcome. Attached is a comprehensive schedule of activities and services for this year. Two MSU websites provide further information:

<http://orientation.msu.edu/index.html> (Academic Orientation)

<http://www.fallwelcome.msu.edu/> (Fall Welcome)

Dean Estry will be available at the Friday, October 11, Board of Trustees meeting to discuss this topic and answer any questions you may have.



OFFICE OF THE  
**PROVOST**

Michigan State University  
Administration Building  
East Lansing, Michigan  
48824-1046

FAX: 517/355-9601

c: President Simon  
Secretary Beekman  
Vice President Poston  
Vice President Noto  
Vice President June  
Associate Provost and Dean Estry

# 2009 Fall Welcome

JAY	TIME	ACTIVITY	CONTACT
Wednesday 8/19/09	All day	<b>Begin New international students move-in</b>	Peter Briggs Amber Arashiro
Sun. – Fri. 8/23-28/09	All day	International Student Orientation <sup>1</sup>	Peter Briggs Amber Arashiro
Mon.-Wed. 8/24-8/26	All day	Teaching Assistant Seminar/Orientation-Anthony Hall <sup>2</sup>	Kevin Johnston
Saturday 8/29/09	10:00am- 12:00pm	Graduate School General Welcome & Orientation-Kellogg Center	Karen Klomprens
Saturday 8/29/09	8:00am- 5:00pm	Freshmen and transfers coming for late Academic Orientation Program move into Residence Halls	Vennie Gore Sharri Margraves
Sunday 8/30/09	All day	Telecom Support Staff available	517-353-5515
Sunday 8/30/09	All day	<b>First time freshmen move into Residence Halls</b>	Vennie Gore Sharri Margraves
Sunday 8/30/09	Beginning at 7:00am	<b>Late Academic Orientation Program for freshmen &amp; transfer students. Wells Hall</b>	Mary Beth Heeder
Sunday 8/30/09	10:00 a.m. – 4:00 p.m.	Registrar, Financial Aid, Admissions will be open for business (see Fall 2009 Student Operations Calendar)	Sue Waltersdorf
Sunday 8/30/09	10:00 a.m. – 8:00 p.m.	ALS Service Desk Open	353-4420 ext 311
Sunday 8/30/09	11:00 a.m. – 3:00 p.m.	Olin Health Center Open	Glynda Moorer
Sunday 8/30/09	2:30pm- 5:30pm	First Year Student-Athlete Parent Program	Jim Pignataro
Sunday 8/30/09	~7:00 pm – 9:00pm	Residence Hall Meetings	Paul Goldblatt
Sunday 8/30/09	9:00pm- 12:00am	Evening activities (coordinated with Residence Life as extension of community building activities) <ul style="list-style-type: none"> <li>• Game Night at Union – bowling and billiards</li> <li>• Ice Skating at Munn</li> <li>• Bingo at International Center</li> </ul>	Denise Maybank Tammye Coles
Monday 8/31/09	All Day	<b>Returning students move into Residence Halls</b>	
Monday 8/31/09	9:00am- 5:00pm	Student Athlete Training & PD Workshops-Freshman at Convocation	Jim Pignataro
Monday 8/31/09	9:00 – 11am	<b>Convocation</b> – Breslin Center University Welcome and One Book One Community Presentation	Denise Maybank Doug Estray

<sup>1</sup> <http://www.oiss.msu.edu/documents/students/orientationschedule/fs09web.pdf>

<sup>2</sup> [http://tap.msu.edu/PDF/2009\\_TA\\_Seminar\\_Overview.pdf](http://tap.msu.edu/PDF/2009_TA_Seminar_Overview.pdf)

Monday 8/31/09	11:00am – 12:30pm	Lunch and Cultural Engagement Event at Breslin (Cultural Engagement Committee, ISE, Study Abroad, Colleges that may choose to participate)	Denise Maybank Doug Estry
Monday 8/31/09	1:00-5:00	Athlete Physicals	Jim Pignataro
Monday 8/31/09	1:00pm- Dinner	<b>OPTIONS:</b> <b>Dialogue/discussions in various settings</b>  <b>Period of “Open Time”</b> <ul style="list-style-type: none"> <li>• Unit specific community service projects (e.g. JMC see below and endnote)</li> <li>• Open houses of various offices, student services, and student programs</li> <li>• Students encouraged to use this time to deal with any lingering issues (connecting with community, billing, buying books, etc.). Is any kind of placement testing still needed?</li> <li>• Selected Engagement Sessions-see Fall Welcome website for details: <a href="http://www.fallwelcome.msu.edu/">http://www.fallwelcome.msu.edu/</a></li> </ul>	Tammye Coles
Monday 8/31/09	1:00pm- 3:00pm	Writing Placement Essay 113 Bessey	Kitty Geissler
Monday 8/31/09	1:00pm- 3:00pm	Lyman Briggs College Engagement Session	Jonelle Golding
Monday 8/31/09	Afternoon	James Madison College Service Project (Jeff Judge – see endnote)	Jeff Judge
Monday 8/31/09	Dinner	Students eat in residence hall dining facilities	
Monday 8/31/09	4:00 pm – 6:15 pm	Welcome Orientation Workshop-Resource Center for Persons with Disabilities (Dinner Included) 316 Bessey <i>Optional time for activities by other academic support programs</i>	Mike Hudson
Monday 8/31/09	7:00 pm – 10:00pm	U-Fest	Denise Maybank Tammye Coles
Monday 8/31/09	8:00pm – 12 midnight	Moonlight Madness	Denise Maybank Tammye Coles

Tuesday 9/1/09	8:00am- 5:00pm	Student Athlete Training & PD Workshops-Freshman at College Colloquia	Jim Pignataro
Tuesday 9/1/09	9:00 – 11:30 a.m.	<b>College Colloquia (Need specific locations for each)</b>	
Tuesday 9/1/09	9:00 am – 2:45 pm	Engineering Colloquium Conference Engineering Building	Tom Wolff Carmellia Davis-King
Tuesday 9/1/09	10:00am- 12:00pm	Office of Supportive Services Welcome Day Wells B108	Aurles Wiggins
Tuesday 9/1/09	11:30 – 1:00 p.m.	Lunch (Can be considered as part of College Colloquium or residence hall dining facilities – need to check)	
Tuesday	1:00 – 3:00	Urban Educators Cohort Program Welcome Reception	Tonya McFadden



9/1/09	p.m.	Erickson Hall Kiva	
Tuesday 9/1/09	1:00 – 3:00 p.m.	GSA/LBGTA Fall welcome Event (New and Returning Students) Room 6 Student Services	Brent Bilodeau
Tuesday 9/1/09	1:00 – 4:00 p.m.	Athletes Personal Development Workshops	Jim Pignataro
Tuesday 9/1/09	Afternoon	<b>OPTIONS:</b> <b>Period of “Open Time”</b> <ul style="list-style-type: none"> <li>• Community service projects (see endnote)</li> <li>• Optional time for open houses of various offices, student services, and student programs</li> <li>• Students encouraged to use this time to deal with any lingering issues (connecting with community, billing, buying books, etc.).</li> <li>• Selected Engagement Sessions-see Fall Welcome website for details: <a href="http://www.fallwelcome.msu.edu/">http://www.fallwelcome.msu.edu/</a></li> </ul>	Tammye Coles
Tuesday 9/1/09	Afternoon	James Madison College First-Year Book Discussion	Jeff Judge
Tuesday 9/1/09	3:30-5:00 p.m.	<b>Honors College Convocation</b> Pasant Theater	Melissa Baumann
Tuesday 9/1/09	3:30-5:00 p.m.	<b>Academic Scholars Welcome</b> North Kedzie N101	Melissa Baumann
Tuesday <sup>3</sup> 9/1/09	4:30 p.m- 10pm	<b>“Spartan Spectacular”</b> (name TBD) – Fall Welcome Cookout, Outdoor Concert, Sparticipation, Spartan Spirit, Fireworks	Denise Maybank Tammye Coles Doug Estry

Wednesday 9/2/09		<b>Classes Begin – ATTEND MONDAY CLASS SCHEDULE ON WEDNESDAY</b>	
Wednesday 9/2/09	7:00-8:00 p.m.	<b>8<sup>th</sup> Annual Athletics Welcome Back Picnic</b>	Jim Pignataro
Wednesday 9/2/09	10:00pm	Residence Hall Floor Meetings for New & Returning Students	Paul Goldblatt
Thursday 9/3/09	TBD	Greek BBQ	Tammye Coles
Wed-Fri 9/2-9/4		Transition Programming	
First Semester		Transition Programming	

<sup>3</sup> The student transition is conceived as a series of interconnected events, not just the two days of Fall Welcome. Therefore, other events deemed essential have not been eliminated but are being considered for alternate times throughout the semester.

## PUBLISHING CONTRACT TERM SHEET

- Party:** Dr. Ionel Ciugulea and Dr. Richard Triemer
- Project Description:** Provision to the MSU Press of the manuscript for a book tentatively titled *Color Atlas of the Photosynthetic Euglenoids*. The manuscript is expected to consist of approximately 180 pages and 120 full color plates.
- Term:** Up to one year, with manuscript delivery expected in 2009.
- Contractual Terms:** MSU Press standard publishing terms and conditions apply. Dr. Ciugulea and Dr. Triemer will each receive 1.5% of net revenues from net copies sold of all editions, plus ten free copies of each volume of each edition, plus the right to purchase for personal use on a non-returnable basis additional copies at a 40% discount from the retail rate, plus 25% of all net revenues actually received by the MSU Press for the exploitation or disposition of secondary or subsidiary rights in the work, such as digests, translations, reprints, or the sale of rights.
- Services Provided:** By MSU to Dr. Ciugulea and Dr. Triemer:  
Publication of the book.  
By Dr. Ciugulea and Dr. Triemer to MSU:  
Preparation of the book manuscript.
- Use of University Facilities/Personnel:**  
None under contemplated agreement.
- Organization Type:** Dr. Ciugulea and Dr. Triemer will be acting as individual scholars.
- Personnel Interest:** This contract will be directly with Dr. Ciugulea and Dr. Triemer, who will each receive the totality of their respective contemplated remuneration.

**PUBLISHING CONTRACT TERM SHEET**

- Party:** Dr. Linda Kalof
- Project Description:** Provision to the MSU Press of edited manuscripts as books in a series tentatively titled *The Animal Turn. An Interdisciplinary Examination of the Human-Animal Relationship*. The series is expected to consist of ten monographs and two volumes of collected essays, each consisting of 60-80,000 words, with illustrations, notes, bibliography, and index.
- Term:** Up to twelve years, deriving from a minimum submission rate of one edited manuscript for publication per year.
- Contractual Terms:** MSU Press standard publishing terms and conditions apply. Dr. Kalof to receive 2% of net revenues from net copies sold of all editions, plus two free copies of each volume of each edition, plus the right to purchase for personal use on a non-returnable basis additional copies at a 40% discount from the retail rate.
- Services Provided:** By MSU to Dr. Kalof:  
Publication of the book series.  
By Dr. Kalof to MSU:  
Editing of the book series.
- Use of University Facilities/Personnel:**  
None under contemplated agreement.
- Organization Type:** Dr. Kalof will be acting as an individual scholar.
- Personnel Interest:** This contract will be directly with Dr. Kalof, who will receive the totality of the contemplated remuneration.

**FIRST AMENDED  
CONTRACT TERM SHEET**

**Party:** AFID Therapeutics, Inc.

**Project Description:** Use of pilot plant infrastructure and operational staff at the MSU facility in Holland, MI for production of chemical intermediates from biomass-derived reagents, plus ancillary use of laboratory space at the facility for quality assurance, process optimization, and related research.

**Term:** Two years, unless terminated at an earlier date at the discretion of either party.

**Contractual Terms:** AFID Therapeutics, Inc. is responsible for providing all raw materials, for the shipping of all products, and for disposal of all wastes generated. The company is responsible for complying with all applicable laws and regulations, as well as all MSU policies, and for cooperating fully with the MSU Office of Radiation, Chemical, and Biological Safety. The company assumes all risks of failed production runs not resulting from demonstrable MSU error or negligence. No intellectual property rights of either party are modified under this agreement.

All payments specified below are by AFID Therapeutics to MSU.

Part A – Pilot Plant Production of Pre-specified  
Compounds via Pre-specified Synthetic Pathways

- Payment of \$45.00 per pound for production of CH<sub>2</sub>OH-CHOH-CH<sub>2</sub>-CH<sub>2</sub>OH (hereinafter “A”) through September 20, 2010, and \$30.00 per pound thereafter.
- Payment of \$15.00 per pound for production of lactone (hereinafter “B”) not used at the site for production of A.
- Payment of \$5.00 per pound for production of a monosaccharide sugar acetal not used at the site for production of either A or B.

### Part B – Other Mutually Agreed Uses of the Pilot Plant

- Payment of 152% of consulting engineer charges incurred by MSU in environmental permit analyses and/or applications.
- Payment of \$3,681 for the first day in any continuous period that one reactor in the pilot plant is actually used, plus \$1,227 for each additional day in the same continuous period.
- Payment of \$67 per person hour for pilot plant staffing during prime shift (8-5 on Monday to Friday) and \$100 per person hour for other shifts.
- For necessary process planning, infrastructure preparation, infrastructure clean-up, and post-run outcome analysis, payment of \$67 per skilled tradesperson hour, \$98 per hour for an M.S. chemical engineer, \$118 per hour for an environmental health & safety officer, and \$154 per hour for the facility Director of Operations.

### Part C – Lease of Research Laboratory Space in Conjunction with the Foregoing Pilot Plant Usage

- Laboratory space at \$30 per NASF per year. Initially, 441 square feet for \$13,230 per year.
- Office space at \$22 per NASF. Initially, 135 square feet for \$2,970 per year.
- Expansion of space occupancy at the foregoing rates to a total of 5,000 square feet by mutual consent of the parties.

**Services Provided:** By MSU to AFID Therapeutics, Inc.:  
Pilot plant scale-up of chemical syntheses.  
By AFID Therapeutics, Inc., to MSU:  
None under contemplated agreement.

**Use of University Facilities/Personnel:**

MSU personnel will execute the pilot plant synthesis runs in the MSU facility in Holland, MI. AFID Therapeutics will lease laboratory space in the same facility.

**Organization Type:** AFID Therapeutics, Inc. is an incorporated Lansing, Michigan-based small business.

**Personnel Interest:** Dr. Rawle Hollingsworth, a Professor in the Department of Biochemistry and Molecular Biology and the Department of Chemistry, and his immediate family own or have an option to buy an equity interest of more than 1% of the company. Dr. Hollingsworth is also an officer of AFID Therapeutics, Inc.