

Media Release

Preliminary World Airport Traffic 2011 Passenger traffic up 4.9%; Cargo flat -0.1%

Montreal, 27 March 2012 – ACI preliminary traffic results, based on reports from over 900 airports worldwide, indicate that global passenger traffic grew at a rate of 4.9 percent while cargo was almost flat at -0.1%, as compared to 2010. Aircraft movements showed moderate growth at 2 percent.

ACI World Director General Angela Gittens commented, “2011 could best be described as a year of global uncertainty. Cargo traffic slowed for most of the year as business confidence deteriorated in light of the looming Eurozone debt crisis. International passenger traffic remained relatively unaffected by economies in Europe and North America teetering towards recession. Despite economic instability and political unrest in many regions of the world, overall, airports continued to experience sustained global passenger growth as compared to 2010.”

Passenger Traffic

Monthly passenger growth worldwide in 2011 was relatively stable with rates ranging from 3 to 6 percent with the exception of April. The month of April experienced a growth rate of 10.8 percent. The sudden spike in the growth trend was due to the sharp decline in passenger traffic for major airports affected by the volcanic ash cloud in April 2010, which forced the closure of European airspace.

With the combined effects of economic woes from pending austerity programs and overall domestic capacity constraints in air transport, only modest growth in passenger traffic was observed in North America at 1.8 percent. In contrast, more robust growth was experienced in Latin America (+8.6 percent), the Middle East (+8.4 percent) and Asia-pacific (+5.7 percent). The key contributors to the global rise in passenger traffic can be attributed to airports in emerging markets. With the rise in per capita income in many of these markets, the demand for air travel has risen correspondingly. Coupled with the fact that many of these regions are home to some of the most populous countries on the globe have helped fortify this phenomenon. In Asia-Pacific New Delhi (DEL), Jakarta (CGK) and Bangkok (BKK) achieved impressive double digit growth of 21.7, 19.2 and 12 percent respectively. Similarly on the other side of the globe, passenger traffic in Rio de Janeiro (GIG) grew by 20.5 percent, compared to 2010.

Despite the economic downturn in the Eurozone, Europe still continues to be the global epicenter for air travel. Europe experienced overall growth of 7.1 percent in passenger traffic. In particular, strong growth was observed in Barcelona (BCN) at 17.8 percent, as well as in the burgeoning markets of Moscow (DME; SVO) and Istanbul (IST), which experienced growth in passenger traffic of 16 percent, compared to 2010.

Air transport in Northern Africa felt the brunt of political unrest, which translated into Africa's overall continental decline in growth rates for 2011. The year-over-year decline for the region was -5.9 percent.

Cargo Traffic

Growth fell flat for cargo traffic in 2011. As a leading indicator, air freight is more sensitive to pending risks in the business cycle. International trade in air freight was placed on the back burner, particularly with respect to the economies of Asia and North America. The regions experienced declines of -1.5 and -0.6 percent respectively. Remarkably, Europe still posted overall gains in global cargo traffic at 1.2 percent irrespective of the overarching structural problems and the debt crises. Despite the overall stagnation of air freight in some parts of the world, key trading blocks in Africa, Latin America and the Middle East posted positive gains for 2011.

Aircraft movements increased the most in Latin America-Caribbean (+5.5%), Asia-Pacific (+5.2%), Europe (+3.4%), Middle East (+2.9%) while movements declined in North America (-0.7%) and Africa (-1%).

Airport Rankings

Atlanta (+3.4%) continues to be the world's busiest airport, while Beijing (+4.7%) maintains second rank. London Heathrow (+5.4%) returns to third while Chicago O'Hare (-0.5%) takes fourth rank. Other than Chicago, the three other airports in the top 30 that did not grow in 2011 include Tokyo (-2.9%), Madrid (-0.4%) and Houston (-0.8%). See tables 1, 2, 3.

SUMMARY: PRELIMINARY RESULTS FOR 2011, compared to 2010

Total Passengers: **+4.9%**

Total International Passengers: **+6.4%**

Total Cargo (includes mail): **-0.1%**

Total International Freight: **-0.1%**

Total Aircraft Movements: **+2.0%**

** Please note that all figures and percentages are based on summed monthly data submissions by 906 airports. The final confirmed report will be published in July 2012 and will include 1000+ airports; therefore figures are subject to variation.*

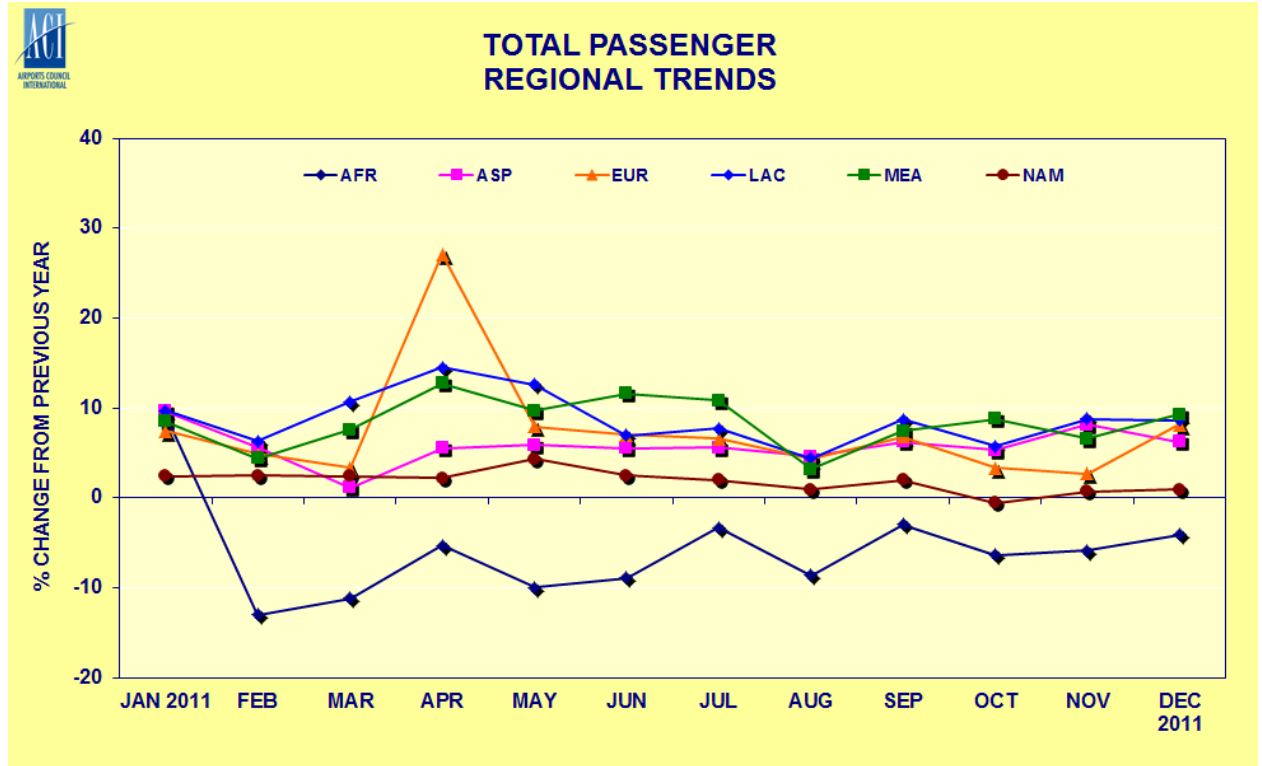
Notes for Editors

1. ACI, the only worldwide association of airports, is a non-profit organization whose prime purpose is to represent the interests of airports and to promote professional excellence in airport management and operations. ACI has 580 members who operate over 1650 airports in 179 countries and territories.

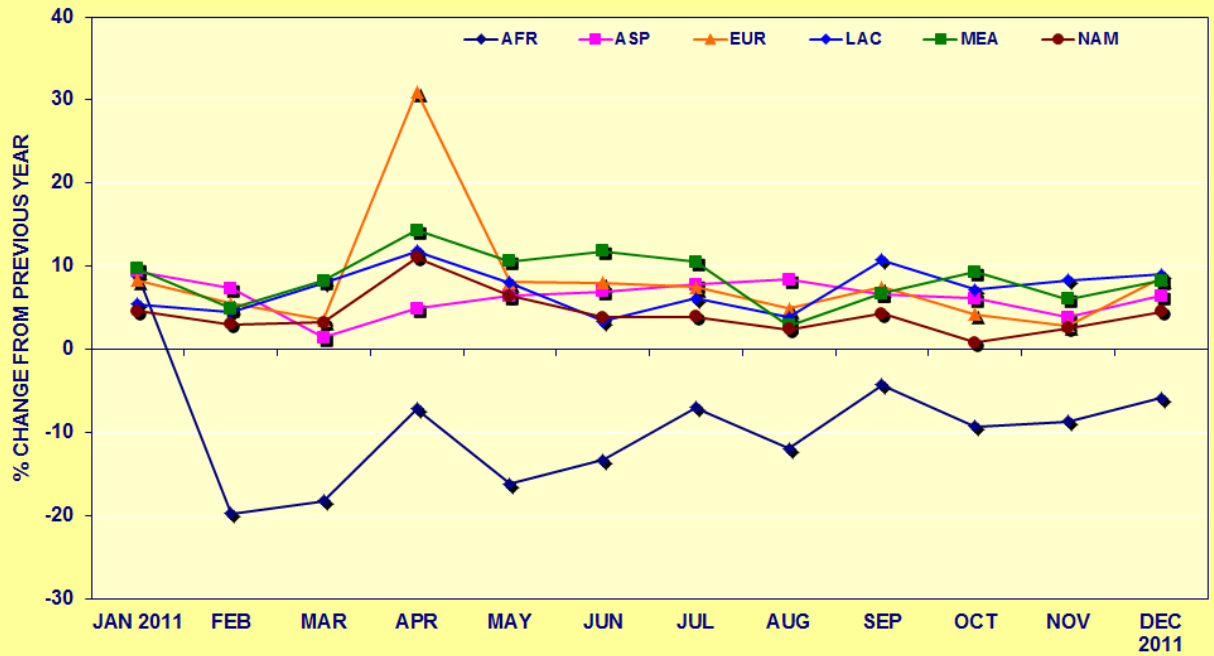
2. For queries concerning the statistics, please contact Cheryl Marcell, Director Communications at ACI World CMarcell@aci.aero or James Roach, Communications Manager ACI World jroach@aci.aero

3. Please note that preliminary results are based on the submissions of over 900 reporting entities. The final confirmed report, which will be published in July 2012, will include any outstanding airport reports, and therefore figures are subject to variation.

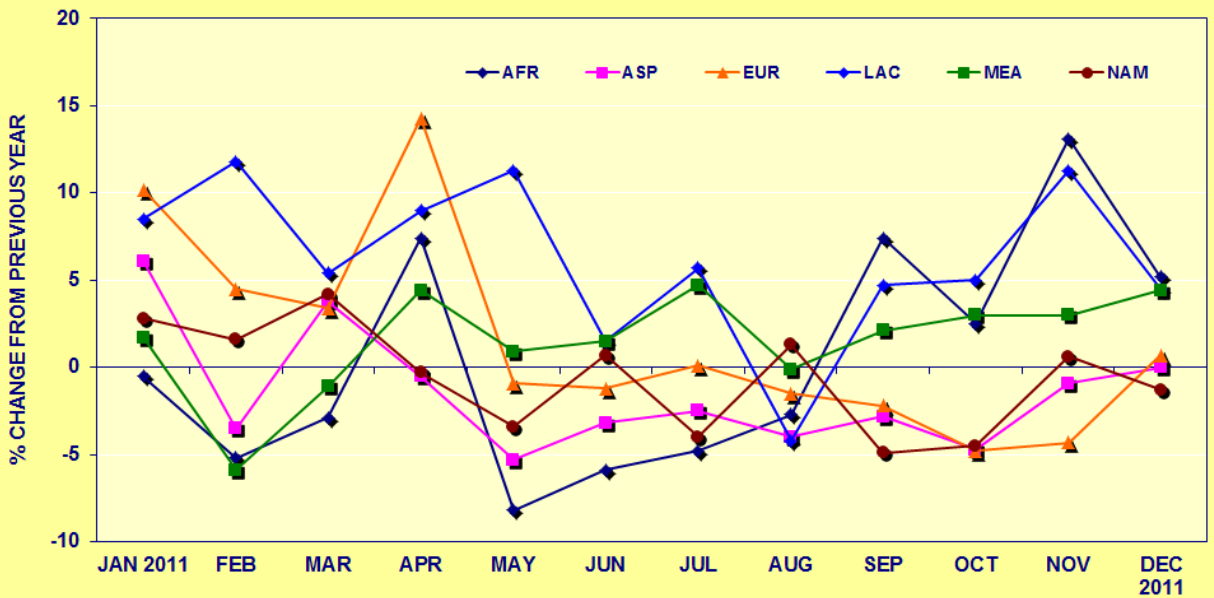
Charts and tables



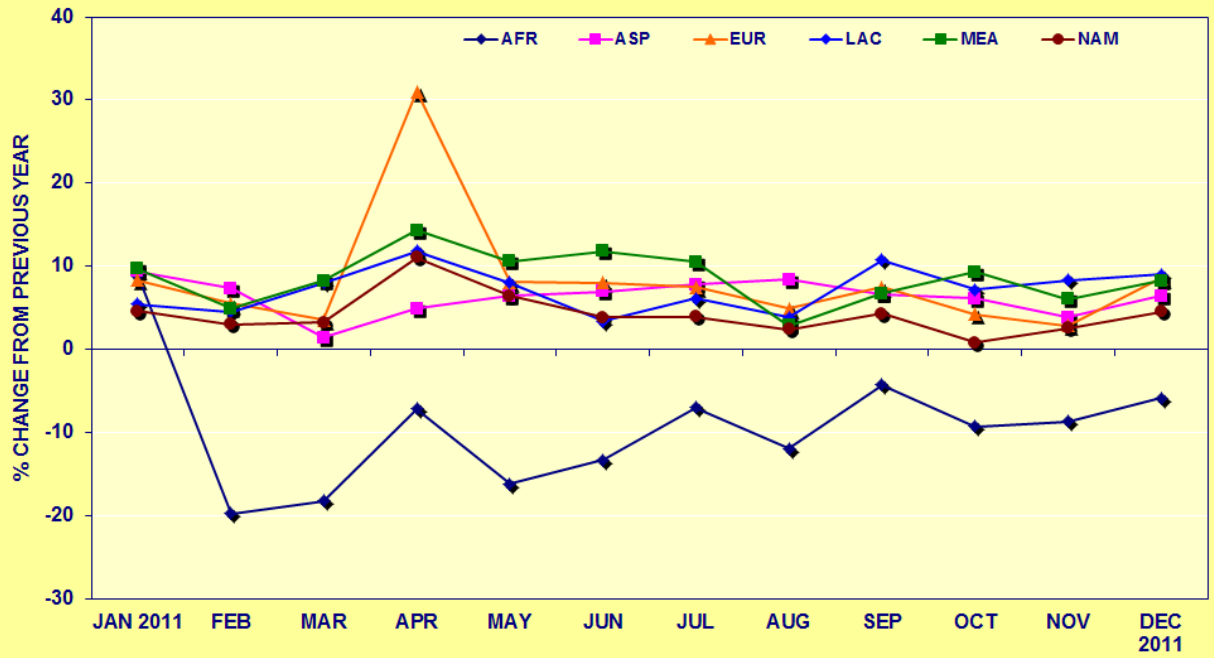
INTERNATIONAL PASSENGER REGIONAL TRENDS



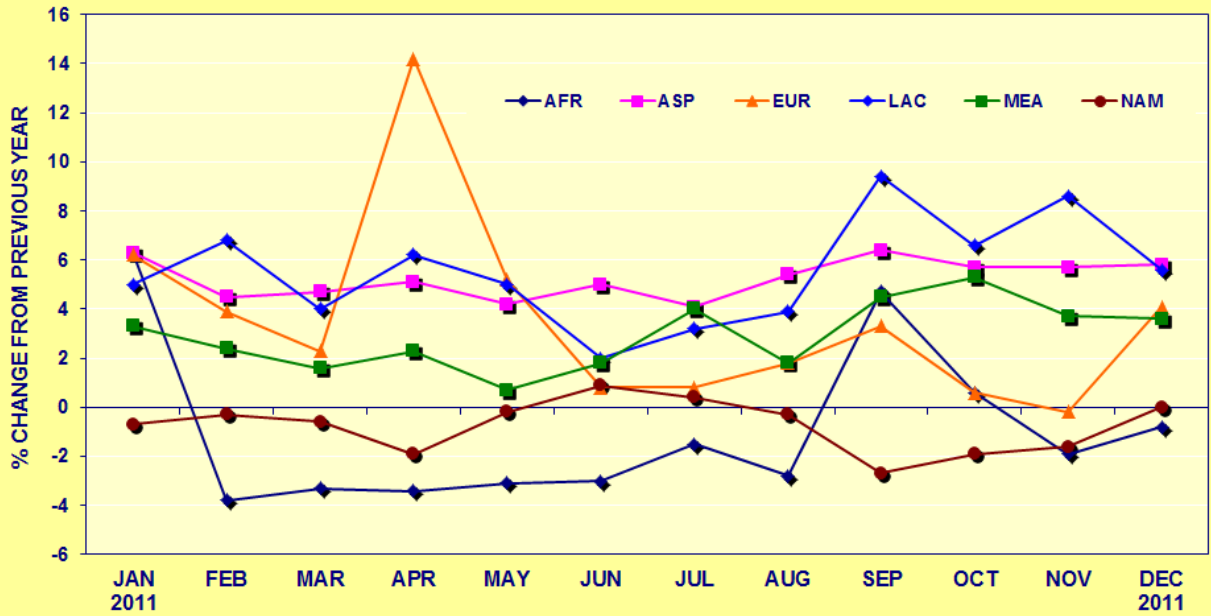
TOTAL CARGO REGIONAL TRENDS



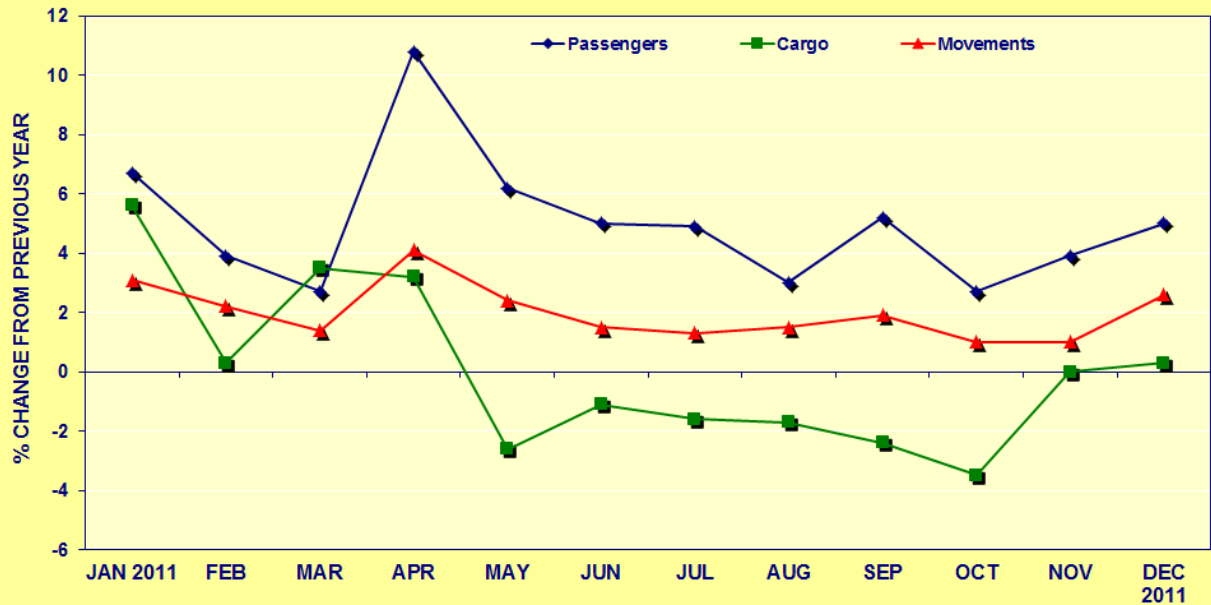
INTERNATIONAL PASSENGER REGIONAL TRENDS



TOTAL MOVEMENTS REGIONAL TRENDS



EVOLUTION OF AIRPORT TRAFFIC WORLDWIDE



WORLDWIDE AIRPORT TRAFFIC REPORT SUMMARY

Preliminary Results 2011

STATS REGIONS	PASSENGERS	percent change	CARGO	percent change	MOVEMENTS	percent change
AFR	1 33 558 845	(5.9)	1 453 797	0.3	2 223 682	(1.0)
ASP	1 254 317 321	5.7	30 207 926	(1.5)	10 636 150	5.2
EUR	1 508 974 011	7.1	17 376 134	1.2	17 965 635	3.4
LAC	388 084 263	8.6	4 706 559	6.1	5 829 835	5.5
MEA	178 862 214	8.4	5 603 482	1.6	1 558 943	2.9
NAM	1 467 416 669	1.8	27 322 347	(0.6)	26 520 302	(0.7)
ACI	4 931 213 322	4.9	86 670 245	(0.1)	64 734 547	2.0

Passengers total passengers enplaned and deplaned; passengers in transit counted once.

Cargo loaded and unloaded freight and mail in metric tonnes.

Movements landing or take-off of an aircraft.

Number of participating airports by region included in this summary in 2011: 906
 AFR: 112; ASP: 124; EUR: 302; LAC: 181; MEA: 16; NAM: 171

INTERNATIONAL PASSENGER & FREIGHT SUMMARY

Preliminary Results 2011

STATS REGIONS	INTERNATIONAL PASSENGERS	percent change	INTERNATIONAL FREIGHT	percent change
AFR	81 372 791	(9.4)	1 300 233	5.9
ASP	458 035 610	6.3	20 993 996	(3.0)
EUR	1 091 153 140	8.0	13 218 501	1.8
LAC	109 557 990	7.1	3 216 553	6.2
MEA	156 149 157	8.6	5 391 681	1.8
NAM	204 018 303	4.2	9 307 266	(0.1)
ACI	2 100 286 991	6.4	53 428 230	(0.1)

International (Passengers/Freight) traffic (passengers and freight) performed between the designated airport and an airport in another country/territory

Freight comprises goods, newspapers, diplomatic bags, parcel post and express parcel; does not include passenger baggage and trucked freight; loaded and unloaded in metric tonnes.

Number of participating airports by region included in the international summary in 2011: 664
 AFR: 94 ASP: 93 EUR: 272 LAC: 116 MEA: 16 NAM: 74

WORLD'S BUSIEST AIRPORTS – Preliminary Ranking

Table 1 – AIRCRAFT MOVEMENTS 2011

RANK	AIRPORT	MOVEMENTS	
		Take-off and Landings	Percent change
1	ATLANTA GA, US (ATL)	923 991	(2.7)
2	CHICAGO IL, US (ORD)	875 798	(2.7)
3	DALLAS/FORT WORTH TX, US (DFW)	646 803	(0.8)
4	DENVER CO, US (DEN)	628 784	(0.2)
5	LOS ANGELES CA, US (LAX)	603 912	4.9
6	CHARLOTTE NC, US (CLT)	539 842	2.0
7	BEIJING, CN (PEK)	533 253	3.0
8	LAS VEGAS NV, US (LAS)	531 538	5.1
9	HOUSTON TX, US (IAH)	528 725	(0.5)
10	PARIS, FR (CDG)	514 059	2.8
11	FRANKFURT, DE (FRA)	487 162	4.9
12	LONDON, GB (LHR)	480 931	5.7
13	PHOENIX AZ, US (PHX)	461 989	2.8
14	PHILADELPHIA PA, US (PHL)	448 129	(2.7)
15	DETROIT MI, US (DTW)	443 028	(2.1)
16	AMSTERDAM, NL (AMS)	437 074	8.6
17	MINNEAPOLIS MN, US (MSP)	434 401	0.1
18	MADRID, ES (MAD)	429 381	(1.0)
19	TORONTO ON, CA (YYZ)	428 312	2.4
20	MUNICH, DE (MUC)	409 956	5.1
21	NEW YORK NY, US (JFK)	407 783	2.9
22	NEWARK NJ, US (EWR)	405 763	0.2
23	SAN FRANCISCO CA, US (SFO)	403 564	4.2
24	MIAMI FL, US (MIA)	394 572	4.9
25	TOKYO, JP (HND)	378 914	10.5
26	BOSTON MA, US (BOS)	368 709	4.6
27	NEW YORK NY, US (LGA)	362 007	0.2
28	SALT LAKE CITY UT, US (SLC)	357 314	(1.5)
29	GUANGZHOU, CN (CAN)	351 006	6.6
30	MEXICO CITY, MX (MEX)	350 032	3.0

WORLD'S BUSIEST AIRPORTS – Preliminary Ranking

Table 2 – TOTAL PASSENGER TRAFFIC 2011

RANK	AIRPORT CITY / COUNTRY/CODE	PASSENGERS	
		(Enplaning and deplaning)	Percent change
1	ATLANTA GA, US (ATL)	92 365 860	3.4
2	BEIJING, CN (PEK)	77 403 668	4.7
3	LONDON, GB (LHR)	69 433 565	5.4
4	CHICAGO IL, US (ORD)	66 561 023	(0.5)
5	TOKYO, JP (HND)	62 263 025	(2.9)
6	LOS ANGELES CA, US (LAX)	61 848 449	4.8
7	PARIS, FR (CDG)	60 970 551	4.8
8	DALLAS/FORT WORTH TX, US (DFW)	57 806 152	1.6
9	FRANKFURT, DE (FRA)	56 436 255	6.5
10	HONG KONG, HK (HKG)	53 314 213	5.9
11	DENVER CO, US (DEN)	52 699 298	0.9
12	JAKARTA, ID (CGK)	52 446 618	19.2
13	DUBAI, AE (DXB)	50 977 960	8.0
14	AMSTERDAM, NL (AMS)	49 754 910	10.0
15	MADRID, ES (MAD)	49 644 302	(0.4)
16	BANGKOK, TH (BKK)	47 910 744	12.0
17	NEW YORK NY, US (JFK)	47 854 283	2.9
18	SINGAPORE, SG (SIN)	46 543 845	10.7
19	GUANGZHOU, CN (CAN)	45 400 156	10.8
20	LAS VEGAS NV, US (LAS)	41 479 572	4.3
21	SHANGHAI, CN (PVG)	41 450 211	2.6
22	SAN FRANCISCO CA, US (SFO)	40 907 389	4.2
23	PHOENIX AZ, US (PHX)	40 565 677	5.2
24	HOUSTON TX, US (IAH)	40 170 844	(0.8)
25	CHARLOTTE NC, US (CLT)	39 043 708	2.4
26	MIAMI FL, US (MIA)	38 314 389	7.3
27	MUNICH, DE (MUC)	37 763 701	8.8
28	KUALA LUMPUR, MY (KUL)	37 670 586	10.5
29	ROME, IT (FCO)	37 651 222	3.9
30	ISTANBUL, TR (IST)	37 398 221	16.3

WORLD'S BUSIEST AIRPORTS – Preliminary Ranking

Table 3 – TOTAL CARGO TRAFFIC 2011

RANK	AIRPORT	CARGO (Metric tonnes)	
		Loaded and unloaded	Percent change
1	HONG KONG, HK (HKG)	3 968 397	(4.7)
2	MEMPHIS TN, US (MEM)	3 916 535	(0.0)
3	SHANGHAI, CN (PVG)	3 103 030	(4.3)
4	ANCHORAGE AK, US (ANC)*	2 625 201	0.5
5	INCHEON, KR (ICN)	2 539 222	(5.4)
6	DUBAI, AE (DXB)	2 269 768	0.0
7	FRANKFURT, DE (FRA)	2 215 181	(2.6)
8	LOUISVILLE KY, US (SDF)	2 187 766	1.0
9	PARIS, FR (CDG)	2 095 773	(4.0)
10	TOKYO, JP (NRT)	1 945 110	(10.3)
11	SINGAPORE, SG (SIN)	1 898 850	3.1
12	MIAMI FL, US (MIA)	1 840 231	0.2
13	LOS ANGELES CA, US (LAX)	1 688 351	(7.2)
14	BEIJING, CN (PEK)	1 668 751	7.7
15	TAIPEI, TW (TPE)	1 627 461	(7.9)
16	LONDON, GB (LHR)	1 569 450	1.2
17	AMSTERDAM, NL (AMS)	1 549 686	0.8
18	CHICAGO IL, US (ORD)	1 506 117	1.0
19	NEW YORK NY, US (JFK)	1 351 259	0.1
20	BANGKOK, TH (BKK)	1 321 842	0.9
21	GUANGZHOU, CN (CAN)	1 193 036	4.2
22	INDIANAPOLIS IN, US (IND)	907 594	(4.2)
23	TOKYO, JP (HND)	873 016	6.7
24	SHENZHEN, CN (SZX)	826 022	2.1
25	DOHA, QA (DOH)	808 099	14.2
26	NEWARK NJ, US (EWR)	807 202	(6.0)
27	LEIPZIG, DE (LEJ)	743 981	16.5
28	OSAKA, JP (KIX)	742 976	(2.1)
29	COLOGNE, DE (CGN)	726 259	12.8
30	KUALA LUMPUR, MY (KUL)	702 116	0.7
	MUMBAI, IN (BOM)	681 266	1.5

- END -