

columbia to go

THE HAND-HELD, LOW-TECH, HIGH-DENSITY, RELATIVELY OBJECTIVE,
AND PRETTY MUCH COMPLETE GUIDE TO COLUMBIA UNIVERSITY IN
THE CITY OF NEW YORK. NUMBERS, PEOPLE, PROGRAMS, FACTS.

COLUMBIA UNIVERSITY

TABLE OF CONTENTS

- 01 COLUMBIA UNIVERSITY
- 02 COLUMBIA COLLEGE
- 04 COLUMBIA COLLEGE:
CURRICULUM
- 06 THE FU FOUNDATION SCHOOL
OF ENGINEERING AND APPLIED SCIENCE
(SEAS)
- 08 ENGINEERING: CURRICULUM
- 10 FACULTY
- 12 RESEARCH
- 13 INTERNSHIPS
- 14 RESOURCES
- 15 INTERNATIONAL PROGRAMS AND
OFF-CAMPUS STUDY
- 16 THE CAMPUS
- 18 CLUBS AND ORGANIZATIONS
- 20 ATHLETICS
- 22 MORNINGSIDE HEIGHTS
- 23 NEW YORK CITY
- 24 AFTER COLUMBIA
- 26 ADMISSION
- 27 FINANCIAL AID
- 28 VISITING COLUMBIA
- 29 DIRECTIONS

COLUMBIA UNIVERSITY

¹ Founded in 1754. The first college established in New York. The fifth college established in the American colonies. For 250 years and counting, a university committed to making essential connections: between tradition and innovation, reflection and renewal, the campus and the surrounding world.

² Two main campuses at the top of Manhattan: Morningside Heights and the Medical Center in Washington Heights. 4,000 faculty. More than 70 Nobel laureates, more than 40 National Academy of Sciences electees, more than 25 MacArthur fellows, more than 100 members of the American Academy of Arts and Sciences. More than \$435 million in sponsored research projects. Throughout its modern history, a world-renowned center for advanced research and scholarship.

³ The birthplace of FM radio, the origin of academic anthropology, the foundation of modern genetics and the base for the Beat Movement. The first North American site where the uranium atom was split. A faculty that, in recent years, has earned more revenue from patents than any other university faculty in the world. Alumni who change the way we see the world: Langston Hughes, Jack Kerouac, Brian DePalma, Georgia O'Keeffe, Tony Kushner, Rodgers and Hammerstein; A home to pioneers, innovators and visionaries.

⁴ 5,500 undergraduate students from dozens of foreign countries and all 50 states. 40 percent of undergraduates self-identify as students of color. 4,100 students and more than 90 areas of study in Columbia College. More than 1,400 students and 15 areas of study in The Fu Foundation School of Engineering and Applied Science (SEAS). More than 150 study abroad programs. More than 5,000 internship opportunities. More than 300 student clubs and organizations. 29 NCAA Division I athletic teams. One of the world's premier research universities, featuring one of the world's finest liberal arts colleges and one of the world's most renowned engineering schools, conveniently located in the world's most extraordinary city.

AREAS OF STUDY

- African-American Studies
- American Studies
- Ancient Studies
- Anthropology
- Applied Mathematics
- Archaeology
- Architecture
- Art History
- Art History and Visual Arts
- Asian American Studies
- Astronomy
- Astrophysics
- Biochemistry
- Biology
- Biophysics
- Chemical Physics
- Chemistry
- Classics
- Classical Studies
- Comparative Ethnic Studies
- Comparative Literature and Society
- Computer Science
- Computer Science-Mathematics
- Creative Writing
- Dance
- Drama and Theatre Arts
- Earth Science
- East Asian Studies
- Economics
- Economics-Mathematics
- Economics-Operations Research
- Economics-Philosophy
- Economics-Political Science
- Economics-Statistics
- Education
- English
- Environmental Biology
- Environmental Chemistry
- Environmental Science
- Evolutionary Biology of the Human Species
- Film Studies
- French
- French and Francophone Studies
- German Literature and Cultural History
- Hispanic Studies
- History
- History and Theory of Architecture
- Human Rights
- Italian Cultural Studies
- Italian Literature
- Jazz Studies
- Latin American Studies
- Latino Studies
- Mathematics

(CONTINUED)

COLUMBIA COLLEGE

THE OVERVIEW: A top-ranked college for arts and sciences, distinguished by a singular, intensive Core Curriculum. Close contact with prize-winning, path-breaking faculty. Access to the resources of a world-class university and entry to the world's financial, cultural and communications capital. A comprehensive advising system. Close ties with the University's renowned graduate and professional schools, including law, business, medicine, journalism and international and public affairs.

FACT: Hamilton Hall, which houses Columbia College, is named for Columbia's most famous dropout, Alexander Hamilton. Hamilton left the college in 1776 to fight in the American Revolution, soon becoming an aide to George Washington and subsequently becoming the country's first Secretary of the Treasury.

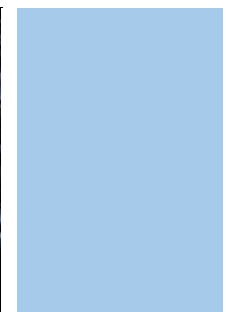
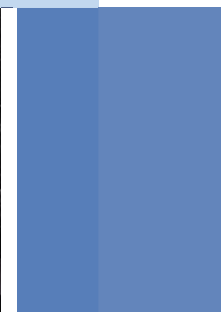
THE NUMBERS: A student to faculty ratio of 7 to 1; in the physical sciences, 3 to 1. Fewer than 20 students in nearly 70 percent of classes. Nearly all students living on campus for all four years. More than 90 areas of study, hundreds of electives, and instruction in more than 40 foreign languages. More than 150 study-abroad programs; more than 80 research institutes and centers; a wide range of world-class laboratories; 22 libraries.

FACT: The laser and FM radio were both invented in Pupin Hall, which houses the Physics and Astronomy departments.

- Mathematics-Statistics
- Medieval and Renaissance Studies
- Middle East and Asian Languages and Cultures
- Modern Greek Studies
- Music
- Neuroscience and Behavior
- Philosophy
- Physics
- Political Science
- Political Science-Statistics
- Psychology
- Regional Studies-Africa
- Regional Studies-East/Central Europe
- Regional Studies-Latin America
- Religion
- Russian
- Russian Language and Literature
- Russian Regional Studies
- Slavic Literature and Culture
- Sociology
- Spanish Language and Literature
- Statistics
- Urban Studies
- Visual Arts
- Women's and Gender Studies
- Yiddish Studies

A SAMPLING OF FOREIGN LANGUAGE OFFERINGS:

- Arabic
- Armenian
- Chinese
- Czech
- French
- German
- Hebrew
- Hindi/Urdu
- Japanese
- Korean
- Persian
- Polish
- Portugese
- Russian
- Serbo-Croatian
- Spanish
- Tibetan



THE CORE CLASSES

Contemporary Civilization
 Literature Humanities
 Art Humanities
 Music Humanities
 Frontiers of Science
 Foreign Language
 Major Cultures
 Physical Education
 Science
 University Writing

SELECTED CORE TEXTS AND TOPICS

CONTEMPORARY CIVILIZATION

Plato	Locke	Nietzsche
Aristotle	Hume	Du Bois
The Bible	Rousseau	Freud
Cicero	Kant	Woolf
Augustine	Smith	Arendt
Al-Qur'An	Burke	Fanon
Machiavelli	Wollstonecraft	Foucault
Galileo	de Tocqueville	Rawls
Newton	Mill	MacKinnon
Descartes	Marx	
Hobbes	Darwin	

LITERATURE HUMANITIES

Homer	Plato	Montaigne
Herodotus	The Bible	Shakespeare
Aeschylus	Vergil	Cervantes
Sophocles	Augustine	Austen
Euripides	Dante	Dostoevsky
Thucydides	Boccaccio	Woolf

ART HUMANITIES

Parthenon	Bernini	Picasso
Amiens Cathedral	Bruegel	Wright
Raphael	Rembrandt	Le Corbusier
Michelangelo	Goya	Pollock
	Monet	Warhol

(CONTINUED)

COLUMBIA COLLEGE: CURRICULUM

THE BEGINNING: A course of study rooted in the celebrated Core Curriculum, a Columbia tradition for nearly a century: A series of small, discussion-based seminars exploring foundational texts, enduring documents, and exemplary experiments in literature, philosophy, history, music, art, and science. Rigorous training in the new century's essential skills: analysis, argument, quantitative reasoning, logical inference, and creative thinking as we pursue our interests and explore our values. A community of shared inquiry that ranges over intellectual disciplines, historical eras, cultural contexts, and contemporary concerns—and connects generations of Columbia students with each other.

FACT: In September 1776, in the area around Mathematics Hall, home to the Math department and library, George Washington's troops counter-attacked the advancing British army in the American Revolution. Called the Battle of Harlem Heights, this small but prophetic victory is commemorated by a plaque on the Broadway side of the building.

BEYOND: Advanced study in dozens of major fields. Independent or guided research in the University's many research centers and institutes, including the Earth Institute and the Lamont-Doherty Earth Observatory. Interdisciplinary and interdepartmental majors and concentrations that combine coursework in two or more areas of study. Special and combined degree programs tailored to students' specific academic interests and long-term professional goals.

FACT: The first class of Columbia College's course in Contemporary Civilization met in September 1919; the course has been given each year ever since, without interruption.

MUSIC HUMANITIES

Josquin des Prez	Handel	Verdi
Monteverdi	Mozart	Wagner
Bach	Haydn	Schoenberg
	Beethoven	Stravinsky

FRONTIERS OF SCIENCE

The evolution of human language
 Brain dynamics
 Global climate change
 The nanoworld
 Biodiversity

SPECIAL PROGRAMS

Accelerated Interdisciplinary Legal Education (BA/BS and JD)
 Columbia-Juilliard (BA/BS and MM)
 Combined Plan (BA and BS)
 Education (public school certification)
 International Affairs/Public Policy (BA/BS and MIA/MPA)
 Higher Education Opportunity Program (mentorship)
 Pre-Professional (law, business, medical, veterinary, dental)

MORE

Visit the Columbia College Bulletin online at www.college.columbia.edu/bulletin/



AREAS OF STUDY

Applied Mathematics
Applied Physics
Biomedical Engineering
Chemical Engineering
Civil Engineering
Computer Engineering
Computer Science
Earth and Environmental Engineering
Electrical Engineering
Engineering and Management Systems
Engineering Mechanics
Industrial Engineering
Materials Science and Engineering
Mechanical Engineering
Operations Research

LIBERAL ARTS MINORS & PROGRAMS

American Studies
Architecture
Art History
Dance
Economics
Education
English and Comparative Literature
French
French and Francophone Studies
German
Greek or Latin
History
Middle East and Asian Languages and Cultures

(CONTINUED)

THE FU FOUNDATION SCHOOL OF ENGINEERING AND APPLIED SCIENCE

THE OVERVIEW: Columbia's Fu Foundation School of Engineering and Applied Science (SEAS) is one of the nation's oldest engineering schools, in a city that is one of the world's most interesting and complex built environments. A broad-minded, cross-disciplinary, intensely practical curriculum, with an emphasis on public service, hands-on training and professional experience. Pioneering research, visionary faculty. Academic advising and career education services that adapt to the field. Training not simply for engineers but also for leaders.

FACT: Founded in 1864 as the Henry Krumb School of Mines, Columbia's engineering school is one of the oldest in the country.

THE NUMBERS: A student to faculty ratio of 10 to 1. 15 areas of study and 20 liberal arts minors. 15 research institutes, including three major interdisciplinary research centers funded by the National Science Foundation and the U.S. Department of Energy. Students actively engaged in research with faculty or University-sponsored labs as early as their first year on campus. Nearly all students living on campus all four years. A shared campus life with 4,100 Columbia College undergraduates.

FACT: Alumnus Hyman George Rickover designed the first nuclear submarine. The Nautilus launched in 1946.

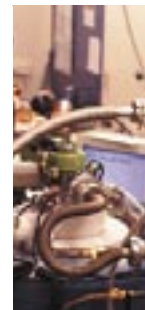
Music
Philosophy
Political Science
Psychology
Religion
Sociology
Spanish

RECENT INTERNSHIPS INCLUDE:

Accenture
Composite Materials
Lehman Brothers
Merck Pharmaceuticals
Microsoft
Motorola

RECENT APPLIED RESEARCH OPPORTUNITIES INCLUDE:

Architecture
Atomic-scale magnetic materials
Climatological forecasting
Interactive media
Microsystems
Nanoscience and nanotechnology
Robotics



CORE REQUIREMENTS

Calculus
Chemistry
Computer Science
Gateway Lab
Literature Humanities,
Contemporary Civilization,
or Major Cultures
Music or Art Humanities
Physics
Physical Education
Principles of Economics
Professional-Level Course
University Writing

GATEWAY LAB PROJECTS

The Apollo Theater, HarlemLIVE, The Studio Museum in Harlem and Project Health are among more than a dozen groups with which SEAS students work, in consultation with volunteer alumni professionals. The projects range from website design to constructing databases and electronic commerce.

ENGINEERING: CURRICULUM

THE BEGINNING: A Core Curriculum that includes intensive work in chemistry, physics, calculus, and computer science, plus a focused version of Columbia College's Core, featuring small, discussion-based classes examining foundational texts in the humanities. In the first year, applied engineering and design experience in the Gateway Lab, the nation's only service-oriented introductory design course for engineers. And a required professional-level course that allows students to connect academic and professional work.

FACT: Many recent innovations were developed at Columbia Engineering, including the X-ray photograph, the 360-degree camera, and the MPEG2 technology. Groundbreaking research is currently underway in the fields of robotics, artificial organs, Internet telephony and search tools, telecommunications software, and automated vision environments.

BEYOND: Advanced course work that prepares students for leadership roles in engineering and applied sciences—and in nearly any professional field: law and government, business and finance, education and social science, medicine and social service. Hands-on lab work guided by prize-winning faculty. Hundreds of research opportunities every year, including the Undergraduate Research Involvement Program, offering positions on faculty research projects.

FACT: The first suggestion for a course in electrical engineering at Columbia came in a letter from Thomas Edison to then-President Barnard. The year was 1882, and Edison's light bulb was just beginning to transform the nighttime activities of lower Manhattan.

RECENT PROFESSIONAL-LEVEL COURSES INCLUDE:

Atomic-Scale Engineering of New Materials
Chemical Processing in Modern Society
Design of Buildings, Bridges and Spacecraft
Earth Resources and the Environment
Engineering Graphics
Engineering in Medicine
Introduction to Architectural Design
and Visual Culture
Introduction to Computational Mathematics
and Physics

MORE

Visit the Columbia Engineering Bulletin online at <http://www.engineering.columbia.edu/bulletin/>



SCIENTIFIC ADVANCES BY COLUMBIA FACULTY INCLUDE:

Margaret Appgar (Columbia Faculty from 1935–59), credited with founding the field of perinatology.

Jacqueline Barton (1983-89), discovered how DNA can be damaged and how that damage can be reversed, furthering cancer research.

Harold C. Urey (1929-45), won the 1934 Nobel Prize in Chemistry for his discovery of deuterium, an essential component of thermonuclear weaponry and nuclear-powered reactors.

Thomas Hunt Morgan (1904-28), whose studies on inherited characteristics of the fruit fly laid the foundations of modern genetics and led to such advances as the deciphering of the human genome.

ARTISTIC WORKS BY COLUMBIA FACULTY INCLUDE:

Gregory Amenoff, "The Seasons" (painting series), 2001-2004

Andrew Bergman, *The Freshman* (screenplay), 1990

Bernard Gersen, *Six Degrees of Separation* (theater production), 1990

Dan Kleinman, *Rage* (screenplay), 1972

Deborah Bradley Kramer, *24 Preludes and Fugues of Sergei Slonimsky* (CD recording), 2004

Mira Nair, *Mississippi Masala* (screenplay), 1991

Archie Rand, "The Letter Paintings" (painting series), 1969-71

James Schamus, *Crouching Tiger, Hidden Dragon* (screenplay), 2000

Chris Washburne (with The Jazzheads), "Paradise in Trouble" (Jazz CD), 2003

FACULTY

THE OVERVIEW: A University-wide commitment to undergraduate education. A faculty of innovators, inventors, visionaries—leading seminars, serving as mentors, guiding independent research. A faculty committed to undergraduate education. Award-winning scholars publishing benchmark books and articles. Public intellectuals shaping social debate. Pioneering researchers supervising major labs. Critically acclaimed artists and performers. Seasoned professionals with a global network of industry contacts.

Nobel Prize winners who keep open office hours.

FACT: More than 70 Columbia faculty members have won the Nobel Prize.

THE NUMBERS: Columbia's faculty supervises more than \$435 million in sponsored research. More than 70 current or former faculty or alumni have won the Nobel Prize; 143 are members of the American Academy of Arts and Sciences; 37 are members of the Institute of Medicine of the National Academies; 16 of the National Academy of Engineering; 41 of the National Academy of Sciences. 4 have won the National Medal of Science; 28 have won a MacArthur Foundation Award, popularly known as the "genius grant."

FACT: Research by Columbia faculty has resulted in 90 patents and 8 start-up companies.

NOBEL PRIZE WINNERS: A FACULTY SAMPLER

Richard Axel, 2004 winner for Physiology or Medicine

Nadine Gordimer, 1906 winner for Literature

Eric Kandel, 2000 winner for Physiology or Medicine

Joshua Lederberg, 1958 winner for Physiology or Medicine

Tsung-Dao Lee, 1957 winner for Physics

Robert Mundell, 1999 winner for Economics

Theodore Roosevelt, 1906 winner for Peace

Joseph Stiglitz, 2001 winner for Economics

Horst L. Stormer, 2001 winner for Physics

A COLUMBIA CENTURY: GROUNDBREAKING TEXTS BY COLUMBIA FACULTY

John Dewey, *Democracy and Education* (1916)

Margaret Mead, *Coming of Age in Samoa* (1928)

Ruth Fulton Benedict, *The Chrysanthemum and the Sword: Patterns of Japanese Culture* (1946)

Lionel Trilling, *The Liberal Imagination* (1950)

Richard Hofstadter, *Anti-Intellectualism in American Life* (1963)

Edward Said, *Orientalism* (1979)

Carolyn Heilbrun, *Writing a Woman's Life* (1988)

Brian Greene, *The Elegant Universe* (1999)

Joseph Stiglitz, *Globalization and its Discontents* (2001)

Rosalind Krauss, *Art Since 1900: Modernism, Anti-modernism, Post-modernism* (2004)

Jeffrey Sachs, *The War on Poverty* (2005)

Martin Puchner, *Poetry of the Revolution: Marx, Manifestos and the Avant-Gardes* (2006)



ACADEMIC CENTERS AND INSTITUTES INCLUDE:

- Center for Applied Probability
- Center for Biomedical Engineering
- Center for Environmental Research and Conservation
- Center for Integrated Science Engineering
- Center for Jazz Studies
- Center for New Media Technology
- Center for the Study of Ethnicity and Race
- Center for Telecommunications Research
- Earth Engineering Center
- Earth Institute
- Institute for African Studies
- Institute for East Central Europe
- Institute for Research in African-American Studies
- Institute for Research on Women and Gender
- Lamont-Doherty Earth Observatory
- National Science Foundation Industry/University Cooperative Research Center

RECENT UNDERGRADUATE RESEARCH PROJECTS INCLUDE:

- Archaeological field research at Amheida, Egypt
- Laser diagnostics of thin film
- Design of instrumentation for testing soft tissue
- 3-D modeling, tactile sensing, and mobile robotics
- Cloning and characterization of recombinant DNA
- Political economy of African countries
- Bat pollination habits in French Guiana
- Paleoclimatology and climate forecasting
- Improving response localization in the visual cortex

RESEARCH

Columbia is one of the world’s great research universities. Hundreds of labs led by major figures in the field, conducting groundbreaking specialized research. More than 80 research centers and institutes, including interdisciplinary research centers producing work that shapes public policy around the globe. A campus culture that encourages collaboration—between students and faculty, disciplines and departments, the campus and the surrounding world. A tradition of student involvement in research at every level.

FACT: The revenue generated by patents granted to Columbia is greater than that at any other university in the world. Recent undergraduate research topics range from the political economy of African countries to prediction of flood, hurricane, and drought risk using climate forecasts.

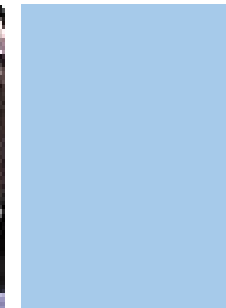
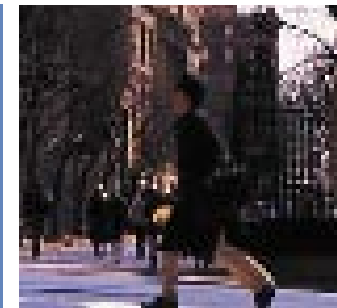
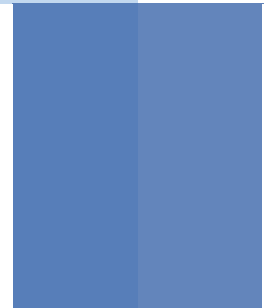
INTERNSHIPS

More than 5,000 internships open to undergraduates every year. Professional guidance from the University’s Center for Career Education. A campus-wide belief in the value of hands-on experience. Longstanding ties to New York’s—and the world’s—major institutions: corporations, financial firms, arts organizations, cultural institutions, medical centers, research facilities, media outlets, government agencies.

FACT: Columbia students can apply for internships at places ranging from CBS News to Congress to the Children’s Television Workshop.

RECENT INTERNSHIPS INCLUDE:

- American Museum of Natural History
- CBS Sports
- Council on Foreign Relations
- Ford Motor Company
- Goldman Sachs
- Greenpeace
- Lehman Brothers
- Lucent Technologies
- Mount Sinai School of Medicine
- MTV
- NASA
- National Basketball Association
- New York City Ballet
- The New York Times*
- United States Congress
- U.S. Department of Justice



LIBRARIES INCLUDE:

Avery Architectural and Fine Art Library
 Biology Library
 Burke Library at Union Theological Seminary
 Business and Economics Library
 Butler Library (History and Humanities)
 Chemistry Library
 Columbia University Archives and
 Columbiana Library
 C. V. Starr East Asian Library
 Engineering Library
 Geology Library
 Geoscience Library
 Health Sciences Library
 Journalism Library
 Law Library
 Lehman Social Sciences Library
 Mathematics and Science Library
 Milstein (undergraduate library)
 Music and Arts Library
 Physics/Astronomy Library
 Psychology Library
 Rare Book and Manuscript Library
 Social Work Library

SERVICES INCLUDE:

First Year/Sophomore Academic Advising Center
 Junior/Senior Advising Center
 Academic Success Programs
 Columbia College/SEAS Tutoring Service
 The Scholars and Fellowships Office
 The Office of Pre-Professional Advising

RESOURCES

Tools and technology. Guidance and support. One of the country's major university library systems, including 22 libraries, 7.7 million printed volumes, 5.7 million microform units, 26 million manuscripts, and 600,000 rare books. Educational affiliations with major neighboring institutions, including Barnard College, the Jewish Theological Seminary, Teachers College, and the Union Theological Seminary. Extensive electronic resources, including hundreds of public terminals, high-end workstations, computer clusters and labs, and expanding wireless access. Support services at every stage of your academic career—and beyond.

FACT: Wireless connectivity exists in or, wherever feasible, is being added to all of Columbia's libraries.

INTERNATIONAL PROGRAMS AND OFF-CAMPUS STUDY

A global university. More than 150 study abroad programs around the world. Eight University-sponsored study centers, in locations including Beijing, Kyoto, Paris, and Berlin. Specialized domestic programs at research facilities and other academic institutions; short-term focused research projects and themed summer programs, in New York's Black Rock Forest and in Florida's Everglades National Park. Strong connections to the University's renowned School of International and Public Affairs.

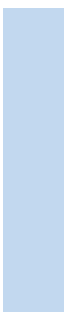
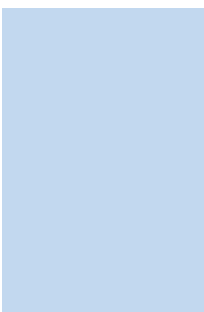
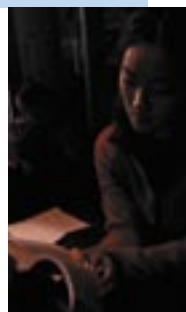
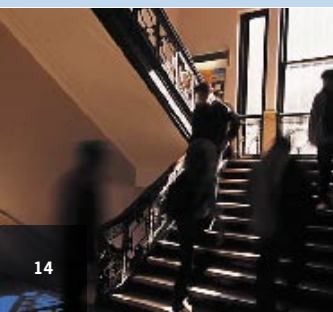
FACT: At Columbia's study abroad program in Shanghai, students learn the language and customs used in Chinese business settings, intern at a multinational company in Shanghai and attend a weekly lecture series featuring timely issues and insight into global business topics.

INTERNATIONAL PROGRAMS INCLUDE:

Argentina	England	Morocco
Australia	Ethiopia	Nepal
Austria	France	New Zealand
Belgium	Germany	Nicaragua
Bolivia	Ghana	Norway
Brazil	Greece	Poland
Bulgaria	Hungary	Russia
Cameroon	India	Scotland
Chile	Ireland	Senegal
China	Israel	South Africa
Costa Rica	Italy	Spain
Cuba	Japan	Sweden
Czech Republic	Jordan	Switzerland
Denmark	Kenya	Tanzania
Dominican Republic	Korea	Turkey
Ecuador	Madagascar	Turks and Caicos
Egypt	Mali	
	Mexico	

RESOURCES INCLUDE:

The School of International and Public Affairs
 The Institute of Latin American Studies
 The Southern Asian Institute
 The Middle East Institute
 The East Central European Center
 and the Institute for the Study of Europe
 The Weatherhead East Asian Institute
 The Center for Brazilian Studies



SOME NOTABLE COLUMBIA BUILDINGS:

Alfred Lerner Hall: Named for Columbia graduate and previous owner of the NFL Cleveland Browns, now home to our state of the art student center.

Butler Library: Our main library, which remains a symbol of Columbia's commitment to the life of the mind. Its roof is carved with the names of great philosophers and writers who you will study over your four years in the Core Curriculum.

Hamilton Hall: Named for Columbia's Alexander Hamilton, Revolutionary War leader and First Secretary of the United States Treasury, now a classroom building.

Hartley Dodge Physical Fitness Center: Where NBA basketball player Jim McMillan played for the Lions, now houses our main basketball arena.

Journalism: In the 1920's, baseball great Lou Gehrig's homeruns broke windows and the Pulitzer Prize is awarded here each year, now home to the renowned School of Journalism.

Kraft Center for Jewish Student Life: Named for Robert Kraft, Columbia alumnus and current owner of the New England Patriots, now home to Hillel.

Low Memorial Library: Named for past Columbia president and Nobel Peace Prize winner Seth Low, now home to chief administrative offices and most recently the site of the World Leaders Forum and a speech by the Dalai Lama.

Pupin: The birthplace of FM Radio and the laser, now home to the Department of Physics.

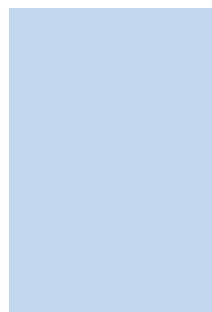
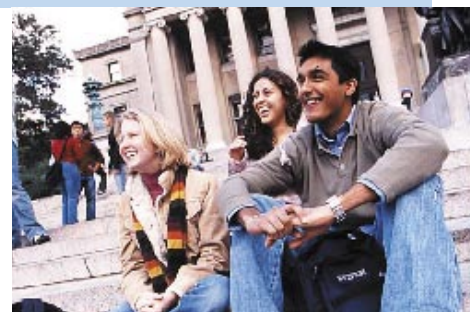
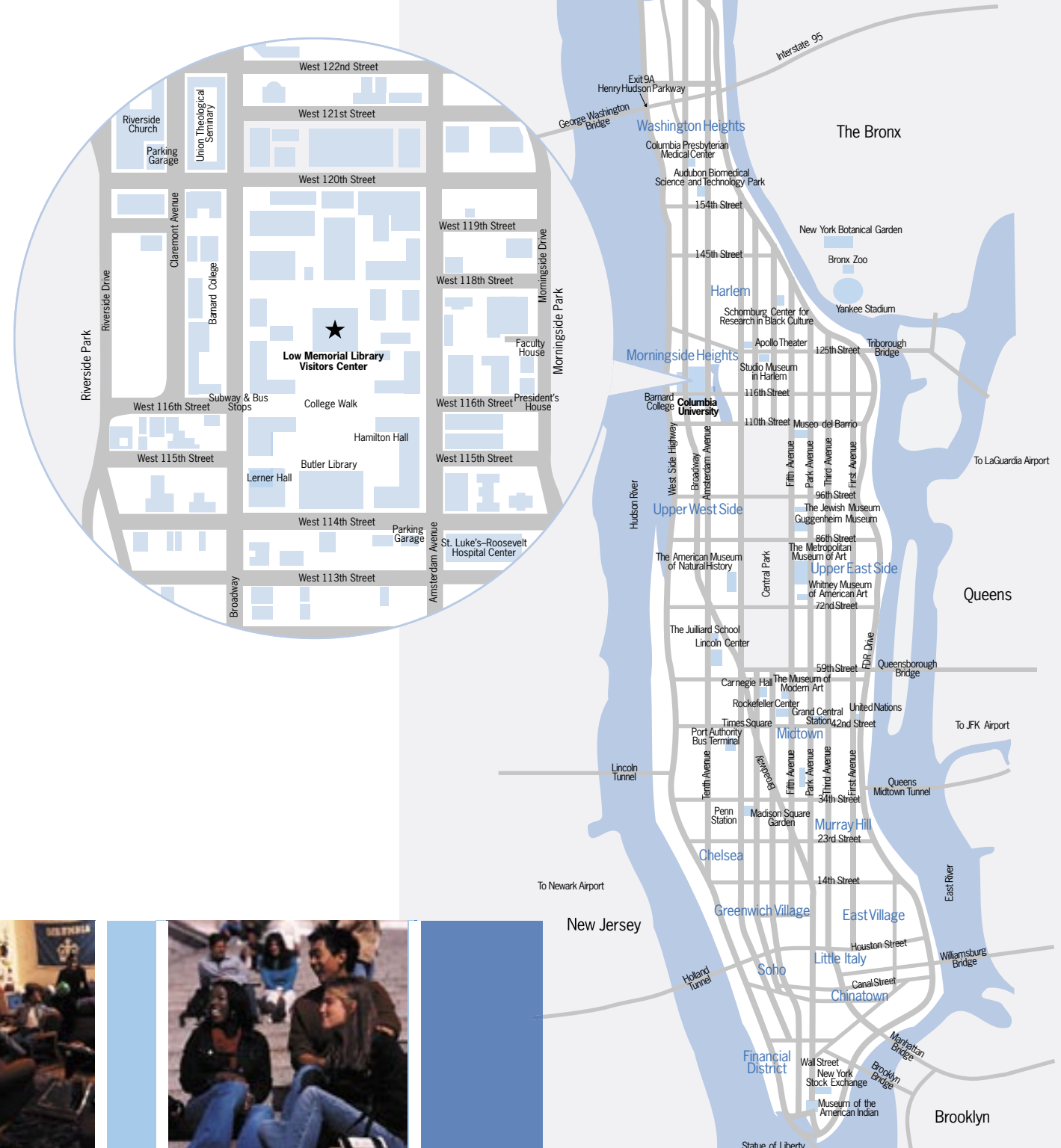
Schapiro Center: Home to the Nanotechnology Center and the Genome Center, where undergraduates do research.

Steps of Low Library: One of the nation's few open public spaces to be named a National Historic Landmark.

THE CAMPUS

The Columbia campus is a majestic, park-like, self-contained urban village, designed by McKim, Mead and White at the turn of the 19th century. First-time visitors to Columbia often marvel that Columbia's breathtaking college campus can exist in the middle of Manhattan. Butler library was modeled on the Parthenon in Greece while the steps of Low Library served as a backdrop for a recent 'Spiderman' film. The glass and steel atrium of the architecturally arresting Alfred Lerner Hall provides a spectacular vista for all the action on campus, whether it's an intramural lacrosse game on the green lawns of South Field, the King's Crown Shakespeare Troupe reciting the Bard on the sundial or George Clinton and the P Funk All-Stars performing on the steps of College Walk. A fully residential undergraduate experience: Nearly all undergraduates live on campus all four years. 99 percent of first-year students live in one of five first-year residence halls at the heart of the historic campus, forming a close-knit community within the larger campus community.

FACT: John Jay Residence Hall, reserved strictly for first-year students, is named after Columbia alumnus John Jay, the first Chief Justice of the United States Supreme Court. It is also home to University Health Services, Dining Services and JJ's Place, a convenience market.



CLUBS AND ORGANIZATIONS

The heart of campus life. More than 300 ways to explore, to grow, to lead, to share.

Accion Boricua
 Action for Immigrant Rights
 Activities Board at Columbia
 Advocacy Coalition
 African Students Association
 AHIMSA
 Alternative Spring Break
 American Civil Liberties Union (ACLU)
 American Institute of Aeronautics and Astronautics
 American Institute of Chemical Engineers
 American Society of Civil Engineers (ASCE)
 American Society of Mechanical Engineers (ASME)
 Amnesty International
 Anime Club
 Apostolos Campus Ministry
 Arab Students' Organization (Turath)
 Armenian Club
 ASHA for Education
 Asian American Alliance
 Asian American Society of Engineers (AASE)
 Asian Baptist Student Koinonia (ABSK)
 Asian Journal
 Asian Pacific American Awareness Month (APAAM)
 Association for Computing Machinery (ACM)
 Athletes in Action
 Augustine Club
 Autumn Calling
 Ayn Rand Discussion Group

Bach Society
 Baha'i Club of Columbia University
 Ballroom Dance Society
 Baptist Campus Ministry
 Barnard-Columbia Earth Coalition
 Big Blue Book
 Biological Society
 Bhakti Club
 Black Church at Columbia
 Black Organization of Soul Sisters (BOSS)
 Black Students Organization (BSO)
 Black Theater Ensemble
 The Blue and White
 The Blue Key Society
 Brazilian Society
 The Bronx Beat
 Buddhism for Global Peace at Columbia
 Campaign to End the Death Penalty
 Cantonese Christian Fellowship
 Caribbean Students' Association
 Care for Kids
 Catholic Campus Ministry
 Chandler Society for Undergraduate Chemistry
 Charles Drew Premedical Society
 Chess Club
 Chicano Caucus
 Chinese Students Club
 Clefhangers (a cappella)
 Club Bangla
 Club Zamana
 The Collection Columbia: A Journal of Literature and Art
 College Bowl

Columbia Adaptive Sports Organization
 Columbia Anti-War Coalition
 Columbia Architecture Society
 Columbia Atheists and Agnostics
 Columbia Barnard Economics Society
 Columbia Bartending Agency
 Columbia Biological Society
 Columbia Buddhist Meditation Group
 Columbia Catholic Athletes Undergraduates
 Columbia-China Business Association
 Columbia Chinese Bible Study Group
 Columbia College Conservative Club
 Columbia College Libertarians
 Columbia College Republicans
 Columbia College Student Council
 Columbia Community Outreach
 Columbia Concerts

The Columbia Daily Spectator
 Columbia East Asian Review
 Columbia Financial Investment Group
 Columbia Forum for Society, Science and Religion
 Columbia Global Justice
 Columbia Greens
 Columbia Iranian Students Association
 Columbia Men Against Violence
 Columbia Music Presents
 Columbia Musical Theatre Society
 Columbia Neuroscience Society
 Columbia Orchestra for Asian Music
 Columbia Organization of Rising Entrepreneurs (CORE)
 Columbia Political Review
 Columbia Political Union
 Columbia Science Review
 Columbia Sign Language Club (CU Sign)
 Columbia Sikh Student Association
 Columbia Standard

Columbia Students for Christ
 Columbia Student Solidarity Network (CSSN)
 Columbia Taiwanese Student Association
 Columbia Television (CTV)
 Columbia Transit Authority
 Columbia UNICEF
 Columbia University Chinese Students & Scholars Association (CUCSSA)
 Columbia University College Democrats
 Columbia University Dance Marathon
 Columbia University Emergency Medical Service (CAVA)
 Columbia University Film Productions (CUFP)
 Columbia University Glee Club
 Columbia University Hellenic Association
 Columbia University Performing Arts League (CUPAL)
 Columbia University Step Team
 Columbia University Swing
 Columbia/Barnard Hillel

Columbia-Barnard Federal Credit Union
The Columbian
 Commission on Elections, Nominations and Appointments (CENA)
 Community Impact
 Conversio Virium (CV)
 Culinary Society
 Democracy Matters
 Dole
 Double Discovery Center
 Dual Degree Student Association
 Economics Society
 Eesti Fellowship
 Elementary Hip-Hop
 Elysium
 Engineering Student Council
 Everyone Allied Against Homophobia
 Falun Dafa
The Federalist Paper
 The Federalist Society
 Ferris Reel Film Society
 French Culture Club
 Friends of the Spartacus Youth Club
 Fruit Paunch
 G.E.D./Reality House

Games Club
 Golden Key Society
 Gospel Choir
 Grand Cru
 Grupo Quisqueyano (GQ)
 Haitian Students Association
 Hellas
Helvidius: The Journal of Politics and Society
 Hindu Students Organization (Santana Dharma Sanga)
 Hong Kong Students and Scholars Society
 Human Rights Society
 Iberia: A Spanish Association at Columbia
 Indian Progressive Study Group
 Institute of Electrical and Electronic Engineers (IEEE)
 Institute of Industrial Engineers (IIE)
 Intercultural Resource Center
 Interfaith Library
 International Church at Columbia
 International Socialist Organization
 Intervarsity Christian Fellowship
 Isma'ili Students Association
 Japan Club
 Japan Karate Association
 Jazz Band
 Jester of Columbia
 Journal of International Affairs
 Jubilation! (a cappella)
 Karaoke Club
 Kandel Society

King's Crown Shakespeare Troupe
 Kingsmen (a capella group)
 Koleinu - Law Students for Israel
 Korea Campus Crusade for Christ (KCCC)
 Korean Graduate Students Association
 Korean Students Association (KSA)
 Latino Heritage Month
 Latter-Day Saints Student Association
 Lesbian, Bisexual and Gay Coalition
 Libertarians
 Liga Filipina
 McIntosh Activities Council
 Medieval Guild
 Metrotones (a cappella)
 The Mobius Strip
 Mock Trial Team
 Model Congress
 Model European Union Club
 Model United Nations
 MUSEO
 Museum Club
 Muslim Students Association
 National Society of Black Engineers
 Native American Council
 Nightline-Telephone Peer Counseling
 Non Sequitor (a cappella)
 Notes and Keys (a cappella)
 Opera Ensemble
 Orchestis (dance)
 Organization of Pakistani Students (OPS)
 Orthodox Christian Fellowship

Panhellenic Council
 Parliamentary Debate Team
 Peace Collective
 Peace Games
 People For Peace
 Philolexian Society
 Policy Debate Team
 Political Science Students Association (PSSA)
 Postcrypt Art Gallery
 Postcrypt Coffeehouse
 Prangstgrup
 Productive Outreach for Women
 Project Success
 Public Interest Law Foundation at Columbia
Quarto (literary magazine)
 Queer Alliance
 Queers of Color
 Queer Studies Group
 Quiz Bowl
 Raw Elementz
 RightsLink
 Rock the Vote
 Romanian Society
 Roots and Culture
 Russian International Association of Columbia
 SAFER (Students Active For Ending Rape)
 Science Fiction Society
 Scientists and Engineers for a Better Society
 Sikhs Society
 Singapore Students Association
 Sirens
 Six Milks (improvisational comedy troupe)
 Societa Italiana
 Society for Immigrant and Refugee Rights

Society for International Undergraduates
 Society for Law, Science and Technology
 Society of Automotive Engineering (SAE)
 Society of Hispanic Professional Engineers (SHPE)
 Society of International Law and Politics
 Society of Women Engineers (SWE)
 Sounds of China
 Spectrum Journal
 Standard
 Student Development and Activities Darkroom
 Student Governing Board of Earl Hall
 Student Government Office
 Student Health Advisory Committee
 Student Legal Action Network
 Student Organization of Latinos (SOL)
 Student Physics Society
 Students for Better Global Governance
 Students for Choice
 Students for Economic and Environmental Justice
 Students for Sensible Drug Policy
 Students Promoting Empowerment and Knowledge (SPEaK)
 Students United for America
 Taal
 Tablet
 Taiwanese American Students Association (TASA)
 Take Back the Night

The Texas Club
 Thai Student Association
 Tibetan Studies Society/Students for a Free Tibet
 Toward Reconciliation
 Turath
 Turkish Students Association
 Two Left Feet (comedy improv)
 Ukrainian Student Society
 Undergraduate Housing Council
 Undergraduate Mathematics Society
 United Students of Color Council
 University Bible Fellowship
 Upstart
 Uptown Vocal (a cappella)
 Varsity Show
 Vegan and Vegetarian Action
 Vietnamese Student Association
 The Warm Blanket Organization
 WBAR-Barnard College Radio
 Wind Ensemble
 WKCR-FM New York Radio
 Women in Public and International Affairs (WPIA)
 Women in Science at Columbia
 Women's International Business Council

GREEK LIFE
 Alpha Chi Omega
 Alpha Phi Alpha
 Alpha Delta Phi
 Alpha Epsilon Pi
 Alpha Kappa Alpha
 Beta Theta Pi
 Delta Gamma
 Delta Sigma Phi
 Delta Sigma Theta
 Kappa Alpha Psi
 Kappa Alpha Theta
 Kappa Delta Rho
 Kappa Phi Lambda
 Lambda Phi Epsilon
 Lambda Phi Upsilon
 Lambda Pi Chi
 Lambda Upsilon Lambda
 Phi Gamma Delta
 Phi Epsilon Pi
 Phi Iota Alpha
 Pi Kappa Alpha
 Psi Upsilon
 Sigma Chi
 Sigma Delta Tau
 Sigma Iota Alpha
 Sigma Lambda Upsilon
 Sigma Nu
 Sigma Phi Epsilon
 Zeta Beta Tau
 Zeta Psi

MEN'S VARSITY SPORTS

Baseball
Basketball
Cross-Country
Fencing
Football
Golf
Rowing (Heavyweight/Lightweight)
Soccer
Swimming and Diving
Tennis
Track and Field (Indoor/Outdoor)
Wrestling

WOMEN'S VARSITY SPORTS

Archery
Basketball
Cross-Country
Fencing
Field Hockey
Golf
Lacrosse
Rowing
Soccer
Softball
Swimming and Diving
Tennis
Track and Field (Indoor/Outdoor)
Volleyball

ATHLETICS

Whether you're a varsity athlete or a rabid sports fan, Columbia has a proud history of achievement. An original member of the Ivy League. 29 NCAA Division I teams, 40 club and intramural sports. Extensive facilities, including the newly renovated Levien Gymnasium, the Dick Savitt Tennis Center (and its state-of-the-art air dome), Lawrence A. Wien Stadium, the Class of 1929 Boathouse, built in 2001, (the newest in the Ivy League) and the Dodge Fitness Center, featuring state-of-the-art aerobic and anaerobic exercise equipment, and 5,000 square feet of hard-wood floor exercise space for classes in aerobics, body sculpting, martial arts, and yoga.

FACT: Lou Gehrig came to Columbia in 1922 on a football scholarship. He studied at Columbia College for 2 years before signing with the Yankees – the baseball diamond was then on South Field. Legend says that Gehrig broke windows in the School of Journalism nearly every game.



CLUB SPORTS

Aikido	Kung Fu
Archery	Lacrosse (Men's)
Badminton	Masters Swim
Ballroom and Latin Dance Team	Moy Yee Martial Arts
Boxing Training	Road Runners
Brazilian Ju Jitsu	Racquetball
Capoeira	Rugby (Men's)
Cricket	Rugby (Women's)
Cycle Racing	Sailing
Equestrian	Shotokan Karate
Figure Skating	Ski Racing
Floor Hockey	Squash
Go Ju Ryu Karate	Swing Dance
Hiking	Table Tennis
Hockey (Men's)	Tae Kwon Do
Hockey (Women's)	Ultimate Frisbee (Men's)
Japan Karate	Ultimate Frisbee (Women's)
Judo	Volleyball
Kayaking	Water Polo
Kendo	
Kickboxing	

RECENT COLUMBIA OLYMPIANS:

Anne Marsh, Fencing, 2000
Christina Teuscher, Swimming, 2000
Matt Napoleon, Soccer, 2000
Tom Auth, Rowing, 2000
Milos Tomic, Rowing, 2004
Stacey Borgman, Rowing, 2004
Veljko Urosevic, Rowing, 2004
Dan Kellner, Fencing, 2004
Emily Jacobsen, Fencing, 2004
Erinn Smart, Fencing, 2004
Jed Dupree, Fencing, 2004



MORNINGSIDE HEIGHTS LANDMARKS

Barnard College (Anna Quindlen, Zora Neale Hurston and Cynthia Nixon are among her alumnae)

Cathedral of St. John the Divine (the largest Gothic cathedral in the world)

Global Ink (world news and strong coffee)

Grant's Tomb (Ulysses S. Grant and his horse are buried here)

The Hungarian Pastry Shop (tea, pastries and attitude)

Jewish Theological Seminary (the intellectual center of Conservative Judaism in the Western Hemisphere)

Labyrinth Books (the largest academic bookstore on the East Coast)

Manhattan School of Music (the alma mater of Harry Connick Jr., Herbie Hancock and more)

Morningside Park (neighborhood barbecues, baseball and panoramic views of the city)

Riverside Church (home to historic speeches by Nelson Mandela and Jesse Jackson)

Riverside Park (323 acres along the Hudson, perfect for blading and biking)

Smoke (Latin jazz on Sunxay nights, courtesy of Columbia Professor Chris Wasburne)

St. Luke's-Roosevelt Hospital Center (making volunteerism and research exceptionally convenient)

The Subway at 116th and Broadway (the link to all of Manhattan, Brooklyn and beyond)

Union Theological Seminary (the largest theological collection outside the Vatican)

LOCAL RESTAURANTS INCLUDE:

Absolute Bagels, DeLuxe and the West End Cafe (American)

Ollie's Noodle Shop (Chinese)

Massawa (Ethiopian)

Le Monde (French)

Symposium (Greek)

Bengal Café (Indian)

Max's SoHa, Sez Meddi and Café Pertutti (Italian)

Korean Mill (Korean)

Tomo (Japanese)

Nacho's Kitchen (Mexican)

Café Swish (Pan-Asian)

La Rosita (Spanish)

MORNINGSIDE HEIGHTS

A college town, New York-style. A neighborhood where you know your dry cleaner, your grocer, the owner of your favorite café. A home to some of the city's foremost academic, religious and medical institutions. A subway stop that links you to every corner of the city. A charming residential enclave. A vital center of intellectual life. A home.

FACT: Columbia's first classes at its new home in Morningside Heights were held on October 4, 1897. University President Seth Low emphasized the relationship between the University and New York City, saying "a University on a hill cannot be hid."

NEW YORK CITY

The most diverse, cosmopolitan city on the planet. The ultimate classroom. A city brimming with resources of every imaginable kind, including leading institutions in culture and commerce, science and medicine, diplomacy and philanthropy. A city of parks and rivers, festivals and parades, neighborhoods and neighbors. Endlessly inventive, fiercely proud, generous and striving and unfailingly bold: a city that welcomes every aspiration, every plan, every possibility.

FACT: The New York City Subway was designed by Columbia engineering graduate William Barclay Parsons.

THE MAJORS: A FEW NEW YORK INSTITUTIONS

The American Museum of Natural History

The Apollo Theatre

The Bronx Zoo

Carnegie Hall

The Guggenheim Museum

The Knitting Factory

Lincoln Center

The Metropolitan Museum of Art

The Museum of Modern Art

The New York Botanical Garden

The New York Stock Exchange

The United Nations

The Village Vanguard

The Whitney Museum

SUGGESTIONS FOR A MULTICULTURAL SAMPLING OF NEW YORK CITY

Visit Duke Ellington's house on Striver's Row in Harlem

Tour an exhibit at The Asia Society

Catch the ferry to the Ellis Island Immigration Museum

Take part in the Feast of San Gennaro in Little Italy

Watch the West Indian Day, Israeli Day or Gay Pride Parade

See new work by Latino playwrights at the Intar Theatre

Visit the Lower East Side Tenement Museum

Find the best dumplings in Chinatown



NOTABLE ALUMNI

Madeleine Korbel Albright, Diplomat
Roone Arledge, *20/20* Creator
Edwin Armstrong, Inventor
Isaac Asimov, Author and Scientist
Jeffrey Bluestein, Harley-Davidson CEO
Randolph Bourne, Social Critic
Jesse Bradford, Actor
Warren Buffett, Investor
James Francis Cagney Jr., Actor
Shirley Anita St. Hill Chisholm, Congresswoman
Peter Cincotti, Jazz Vocalist
Kenneth B. Clark and Mamie Phipps Clark, Educational Psychologists
André Frédéric Cournand, Physiologist
Rachel DeWoskin, Chinese Soap Star
Dwight D. Eisenhower, U.S. President
Milton Friedman, Economist
Arthur Ira Garfunkel, Singer
Lou Gehrig, Athlete
Allen Ginsberg, Poet
Ruth Bader Ginsburg, Jurist
Judd Gregg, U.S. Senator
Jake Gyllenhaal, Actor
Maggie Gyllenhaal, Actress
Alexander Hamilton, Founding Father
Utada Hikaru, Japanese Musician
Lauryn Hill, Musician
David Horowitz, MTV Founder
Langston Hughes, Writer
Zora Neale Hurston, Writer

(CONTINUED)

AFTER COLUMBIA

Counseling and guidance from the University's comprehensive Center for Career Education. A global network of alumni in leadership positions in every field. Contacts made through internships and research positions. The resources of a world capital. 253,593 alumni throughout the 50 states and 180 countries. Some of the world's most prominent scientists, artists, humanitarians, entertainers, educators, engineers, architects, and business executives.

FACT: Columbia boasts a number of Founding Fathers, U. S. Presidents and other national luminaries among its alumni, including John Jay, Alexander Hamilton, both Theodore and Franklin Roosevelt, former Secretary of State Madeleine Albright, and Supreme Court Justice Ruth Bader Ginsburg. Dwight Eisenhower served as President of Columbia before going on to win election to President of the United States.



John Jay, Founding Father
Eric Kandel, Neurophysiologist
Jaime Katz, *Vibe* Deputy Director
Jack Kerouac, Father of the Beat Generation
Robert Kraft, New England Patriots CEO
Tony Kushner, Playwright
Joseph Mankiewicz, Oscar-winning Actor
Joseph McAdams, MTV Vice President
Margaret Mead, Anthropologist
Thomas Merton, Catholic Thinker
Janice Min, Editor-in-Chief, *US Weekly*
Robert Moses, Shaper of New York City
Michael Musto, Gossip Columnist
Jerrold Nadler, U.S. Representative
Rachel Nichols, Actress
Barack Obama, U.S. Senator
Georgia O'Keeffe, Artist
William Barclay Parsons, Civil Engineer
Frances Perkins, U.S. Secretary of Labor
Joseph Pulitzer, Writer
Michael Idvorsky Pupin, Electrical Engineer
Anna Quindlen, Writer
Richard Rodgers, Composer
Franklin Delano Roosevelt, U.S. President
Theodore Roosevelt, U.S. President
George Segal, Comedian
Benjamin Spock, Pediatrician
Ben Stein, Economist, Entertainer
George Stephanopoulos, Political Advisor
Robert A. M. Stern, Architect
Julia Stiles, Actress
Twyla Tharp, Choreographer
Mark Van Doren, Teacher
Eudora Welty, Writer
Gideon Yago, MTV Correspondent



DEADLINES

EARLY DECISION PROGRAM:

November 1: First-year applications due
December 15: Decision letters mailed

REGULAR DECISION:

First Business Day in January: First-year applications due
April 1: Decision letters mailed

COMBINED PLAN PROGRAM:

March 15: Combined Plan applications due
April 1: Decision letters mailed

TRANSFER STUDENTS:

March 15: Applications due
May 15: Decision letters mailed

STATISTICS

COLUMBIA COLLEGE

Admit Rate: 10.9%
SAT Middle 50% Range: High 1300s to Low 1500s
Percent in top 10% of class: Nearly 90%

FU FOUNDATION SCHOOL OF ENGINEERING AND APPLIED SCIENCE

Admit Rate: 28.4%
SAT Middle 50% Range: Low 1400s to Low 1500s
Percent in top 10% of class: Over 90%

MORE

Please consult our Web site for selection criteria and the secondary school preparation we recommend. Applicants are strongly encouraged to apply on-line:

www.studentaffairs.columbia.edu/admissions/

ADMISSION

Admission is broad-based but highly selective.

APPLICATION PROCESS: Applying electronically is Columbia's preferred application process.

STANDARDIZED TESTING: Please see our website for details on our testing requirements.

EARLY DECISION: Applicants who are willing to make a binding commitment to Columbia as their first choice may apply under the Early Decision plan. If you are admitted under the Early Decision program, you are obligated to accept Columbia's offer of admission. Only students who (after consultation with the Financial Aid Office) cite financial reasons for not attending will be released from the Early Decision agreement.

COMBINED PROGRAMS: The University offers two BA/BS programs. The 3-2 Program allows applicants to attend Columbia College for three years and The Fu Foundation School of Engineering and Applied Science for two years. The 4-1 program allows students to complete a four-year BS program in The Fu Foundation School of Engineering and Applied Science and an additional year of study in Columbia College.

FINANCIAL AID

A NEED-BLIND ADMISSION POLICY: Applicants are considered without regard to financial need. Columbia is committed to meeting the full financial need of all applicants admitted as first-year students: financial aid packages are provided to help applicants and their families cover the cost of attending Columbia. More than half of all enrolled students receive some type of aid from Columbia or outside sources. The need-blind application policy is in effect for candidates who, regardless of place of schooling or residence, are U.S. citizens or permanent residents, are Canadian or Mexican citizens or qualify for a refugee visa. Financial aid is available for foreign students, but competition for these funds is quite high.

FACT: The average financial aid award for recent entering first-year students was \$27,203 (including grants, loans and work-study).

TUITION AND FEES, 2005-2006

Tuition: \$31,924
Room and Board: \$9,338
Fees: \$1,622
Books and Miscellaneous Expenses: \$2,060
Orientation: \$300 (for first year only)
Total estimated cost: \$45,244

STATEMENT OF NON-DISCRIMINATION

Columbia University admits students of any race, color, national or ethnic origin to all the rights, privileges, programs and activities generally accorded or made available to students at the University. It does not discriminate on the basis of race, color, sex, handicap, age, sexual orientation, national or ethnic origin in administration of its educational policies, scholarships or loan programs and athletic and other University-administered programs.



ACCESS

For more information on wheelchair accessibility, please call the Office for Disability Services at 212-854-6794.

MORE

For more information about visiting campus, please contact the Visitors Center at 212-854-4900. For detailed information about the University, please visit www.columbia.edu or call the Office of Undergraduate Admissions at 212-854-2522.

VISITING COLUMBIA

Columbia University is located in the Morningside Heights neighborhood of Manhattan, just northwest of New York City's Central Park. We provide prospective students with information sessions, tours and class visits.

INFORMATION SESSIONS AND CAMPUS TOURS: Offered most weekdays and some Saturdays. Sessions and tours begin in the Visitors Center, 213 Low Memorial Library. Reservations are necessary only for groups over ten. For a listing of specific sessions, tours and exceptions, please visit <http://www.studentaffairs.columbia.edu/admissions/visit/> before making travel arrangements.

CLASS VISITS: An array of classes are open to prospective students during the fall and spring terms; we encourage students to visit during their senior year of high school. See the Columbia College Bulletin/Catalog at <http://www.college.columbia.edu/bulletin/> or the Columbia Engineering Bulletin/Catalog at <http://www.engineering.columbia.edu/bulletin/>

DIRECTIONS

BY NEW YORK CITY PUBLIC TRANSIT: five bus lines (the M4, M5, M11, M60, M104) and one subway line (the #1) serve the Columbia neighborhood. The M60 bus is a direct link between the campus and LaGuardia Airport. The subway stop for the campus is Columbia University/116th Street. Please note: if you begin your journey on the #2 or #3 express train, be certain to transfer at 96th Street to the #1 train. The express trains turn away from the West Side before 116th street.

BY INTERCITY TRAIN OR BUS: train service to New York arrives at Grand Central Terminal or Penn Station; bus service arrives at the Port Authority Bus Terminal. From any of these locations, public transportation or taxi cab service is available to the campus.

BY AIR: LaGuardia Airport is the closest to the campus; a taxi cab ride is about \$30 (including a 15% tip), and the M60 city bus goes directly from LaGuardia to the campus every half hour for \$2.00 (change only). For visitors arriving at any area airport (including Newark International Airport), coach service is available to the Port Authority Bus Terminal (see paragraph above). A taxi cab to the campus from Kennedy Airport costs approximately \$60 (including a 15% tip).

BY CAR FROM THE NORTH: Take the New York Thruway (I-87) or the New England Thruway (I-95) south to the Cross Bronx Expressway (I-95) in the direction of the George Washington Bridge. Take the exit for the Henry Hudson Parkway south downtown, 9A (the last exit before the bridge). Exit the Parkway at West 95th/96th Street. After the underpass, make a right onto 95th Street and then a left onto Riverside Drive. Follow directions "From Riverside Drive and West 95th Street."

BY CAR FROM THE SOUTH OR WEST: Take the New Jersey Turnpike north or I-80 east to the George Washington Bridge. As you cross the bridge, take the exit for the Henry Hudson Parkway south downtown. Exit the Parkway at West 95th/96th Street. After the underpass, make a right onto 95th Street and then a left onto Riverside Drive. Follow directions "From Riverside Drive and West 95th Street."

BY CAR FROM LONG ISLAND: Take the Long Island Expressway or the Grand Central Parkway west to the Cross Island Parkway north. Cross the Throgs Neck Bridge onto the Cross Bronx Expressway (I-95 south) and proceed as in "By Car from the North."

BY CAR FROM THE NEW YORK AIRPORTS: LaGuardia: Take the Grand Central Parkway east to the Whitestone Parkway (I-678). Follow it across the Whitestone Bridge and onto I-95 south. Follow directions above for "By Car from the North." Kennedy: Take the Van Wyck Expressway (I-678) to the Whitestone Bridge and across. Take I-95 south and follow the directions above for "By Car from the North." Newark: Follow directions above for "By Car from the South or West."

FROM RIVERSIDE DRIVE AND WEST 95TH STREET: Go north on Riverside Drive to 116th Street. Turn right and go two blocks to Broadway and the University's main gate (which is not open to traffic).

PARKING: Street parking and local parking garages may be available. The Central Parking System garage is on West 114th Street between Broadway and Amsterdam Avenue; Riverside Church Parking Garage is on West 120th Street between Claremont Avenue and Riverside Drive. CGMC Parking is at 512-520 West 112th Street between Broadway and Amsterdam Avenue.



www.columbia.edu

Office of Undergraduate Admissions
Columbia University
212 Hamilton Hall, MC 2807
1130 Amsterdam Avenue
New York, NY 10027
212-854-2522

www.studentaffairs.columbia.edu/admissions/