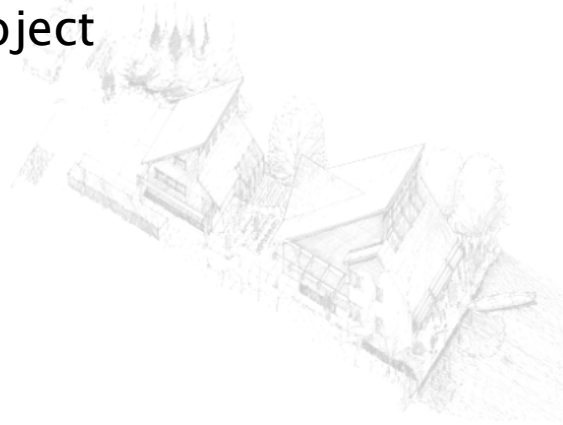




# Wakeup Goshen

Millrace Canal Revitalization Project  
Goshen, Indiana USA

Presented by  
Building Better Communities  
Ball State University



Harry Eggink, Michel Mounayar, Jason Johnson

9/15/05



create arts plaza or commons



History

Historical Electrical Generation Plant



Historic Race and Bridge provide sense of

**Character and Place**







Urban Park



I Can't Believe I am Downtown





Recreation



The Race Environment provides for Recreation and Relaxation



Trails



Water recreation



Wetlands ecosystem

Site Video

QuickTime™ and a  
YUV420 codec decompressor  
are needed to see this picture.

The Canal Walk highlights Sounds of Nature

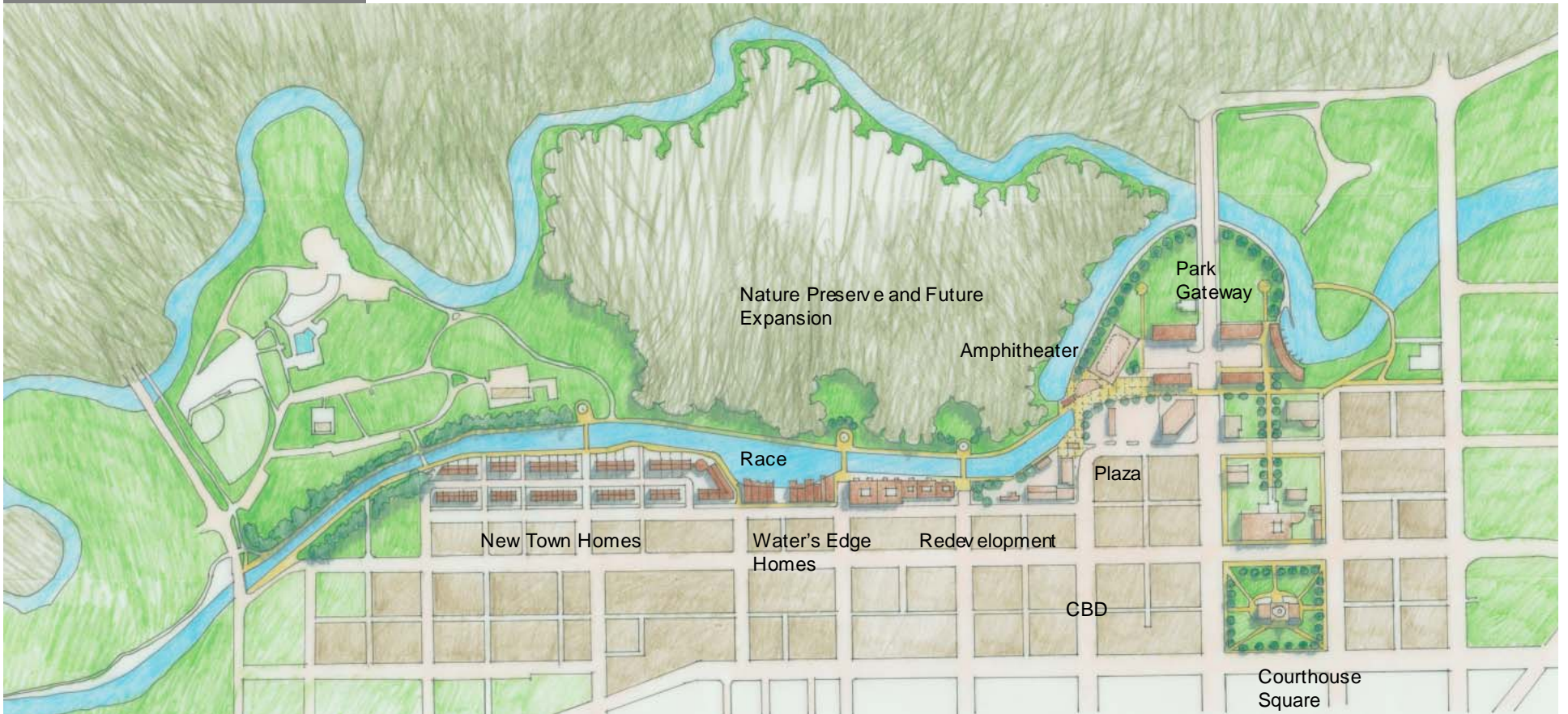
Site Video

QuickTime™ and a  
YUV420 codec decompressor  
are needed to see this picture.

CBD Neighborhood Redevelopment

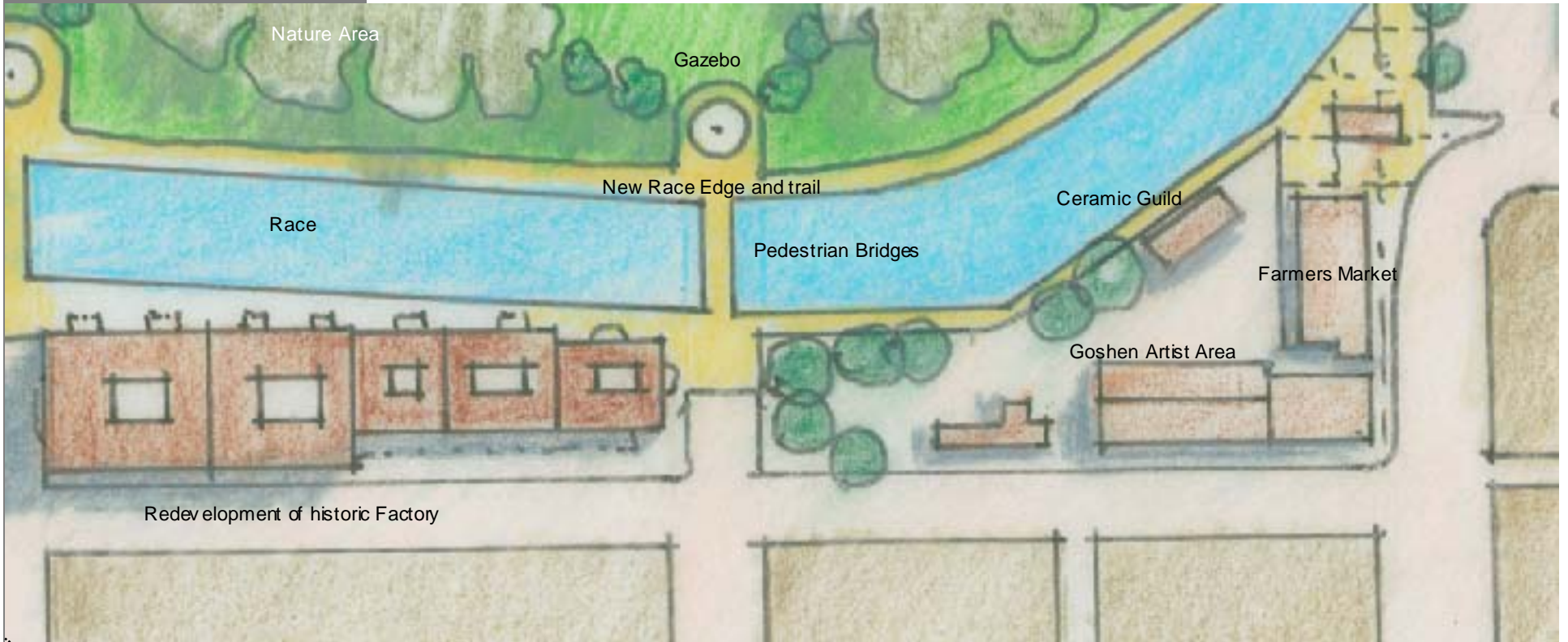


# Master Plan

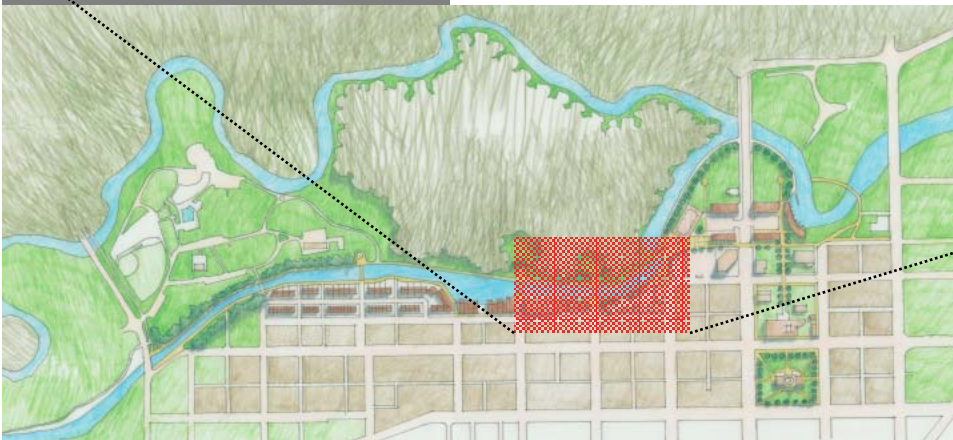


Goshen Race Sub-District Master Plan

# Master Plan

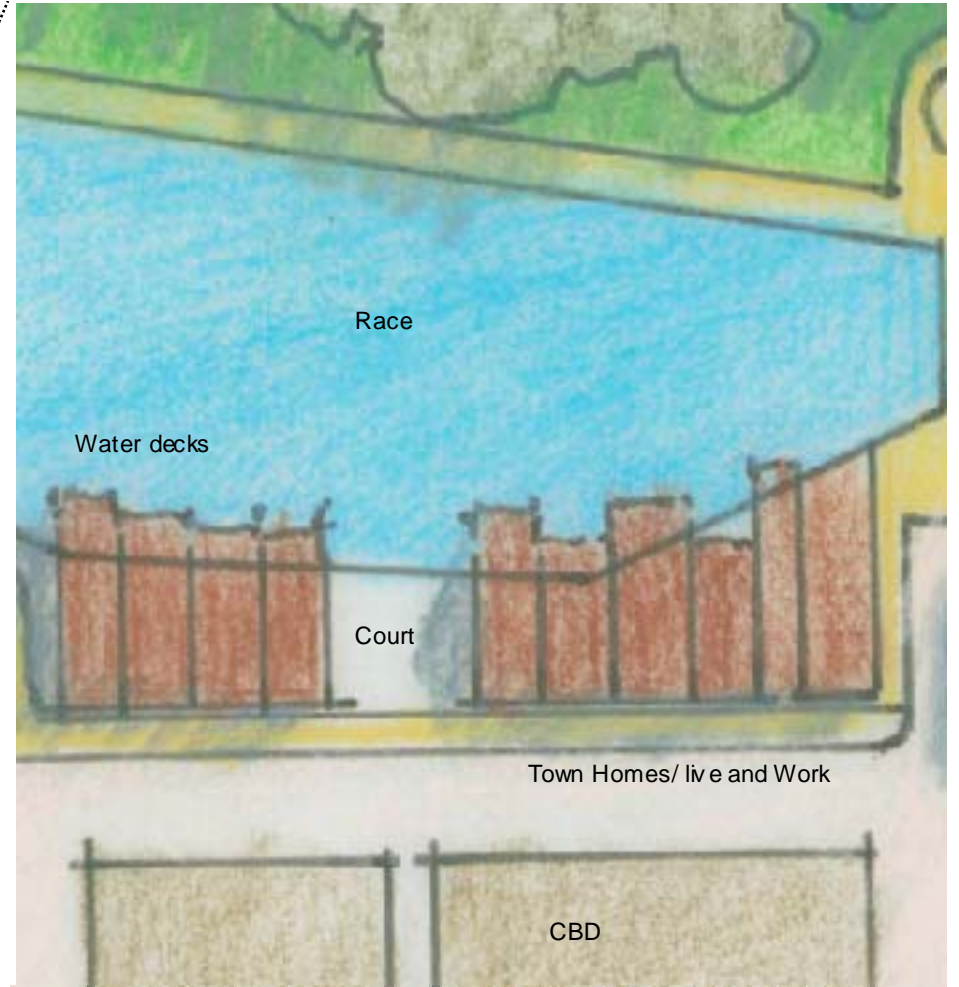


## Warehouse Housing Live/Work Development



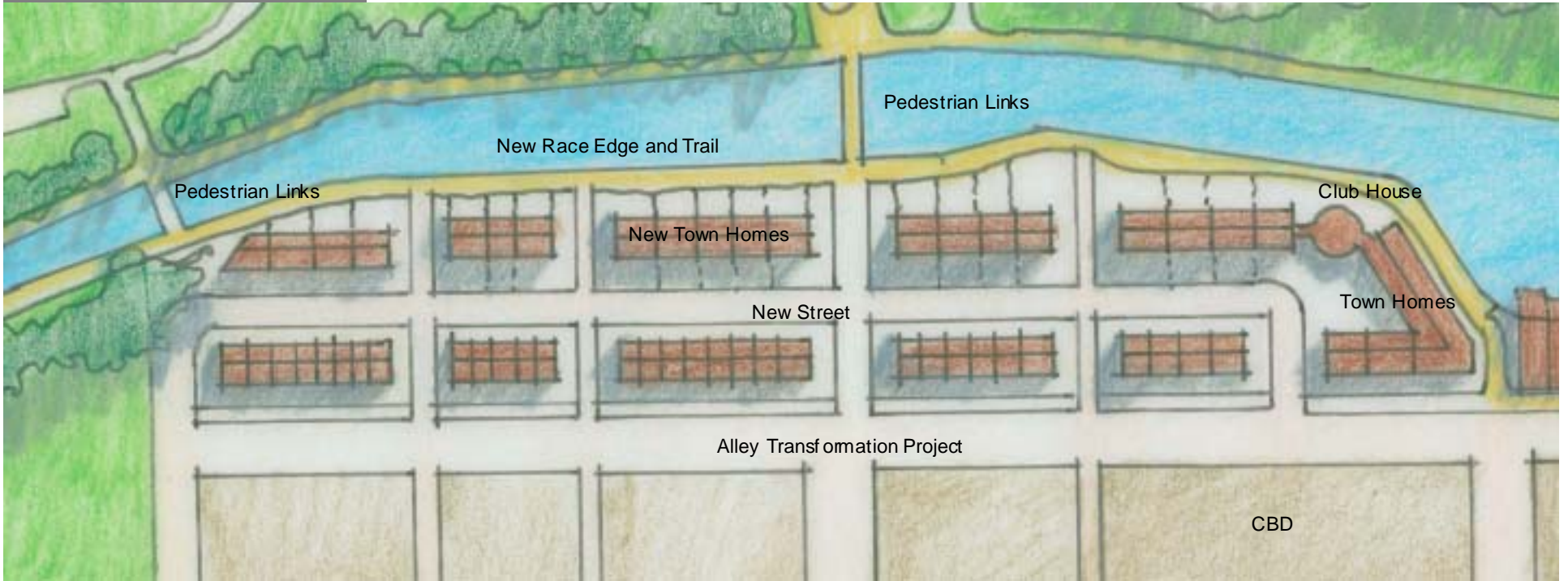


# Master Plan



## Water's Edge Homes

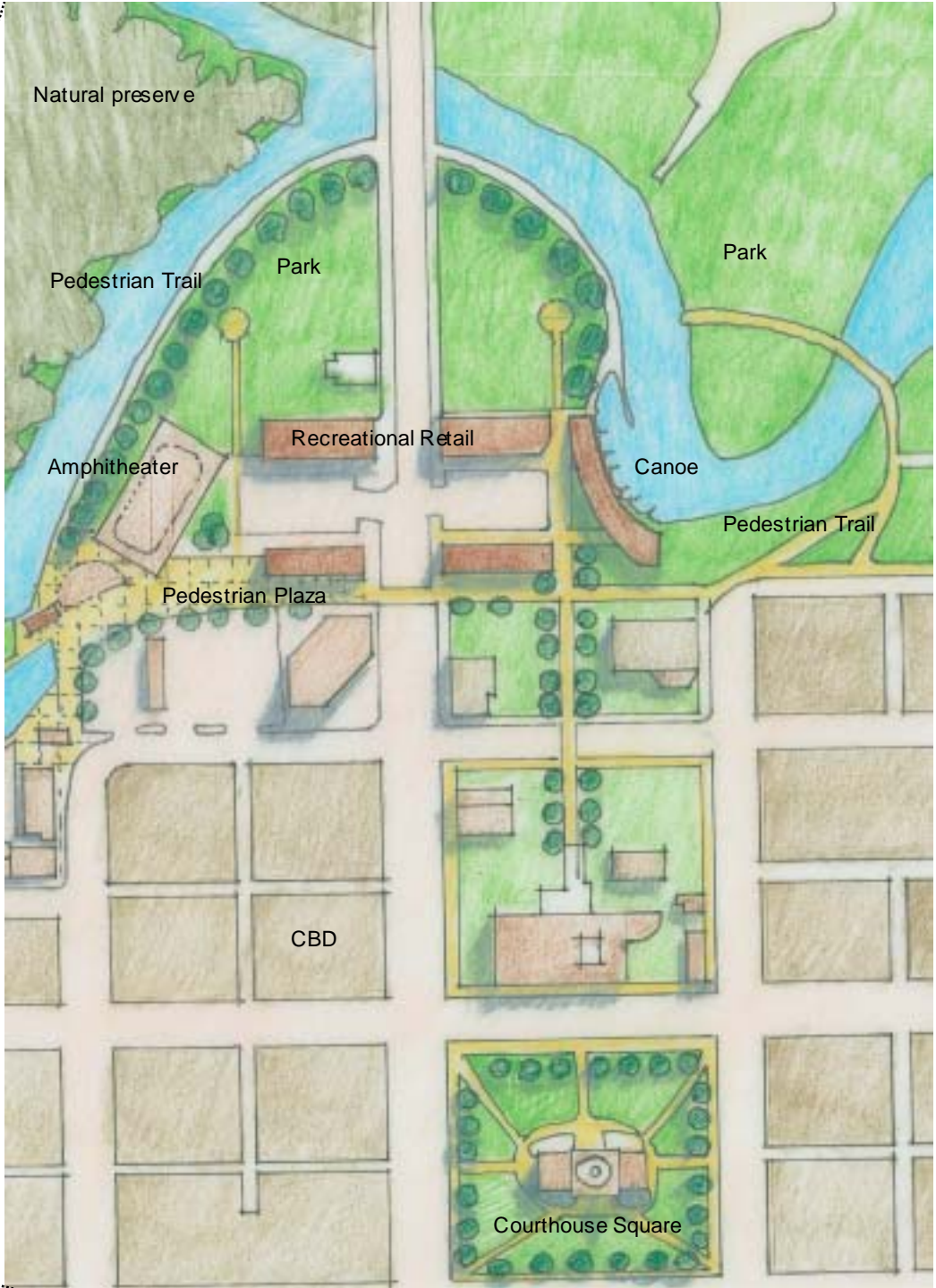
# Master Plan



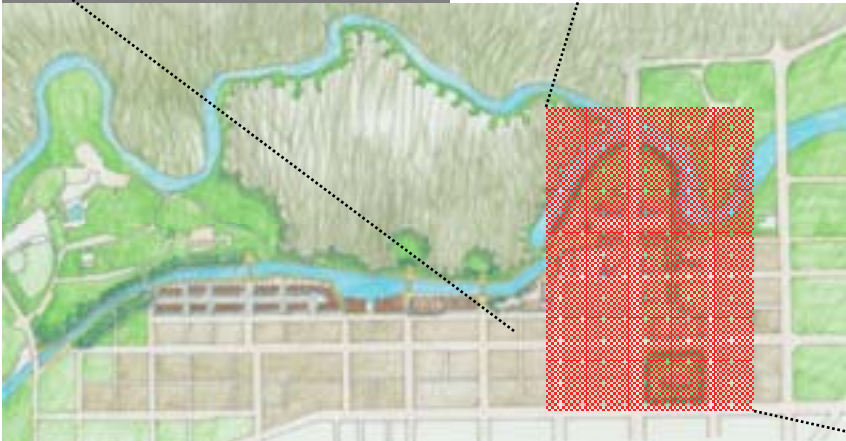
New Town Homes



# Master Plan



Goshen Central Park







View of Redeveloped Power Station

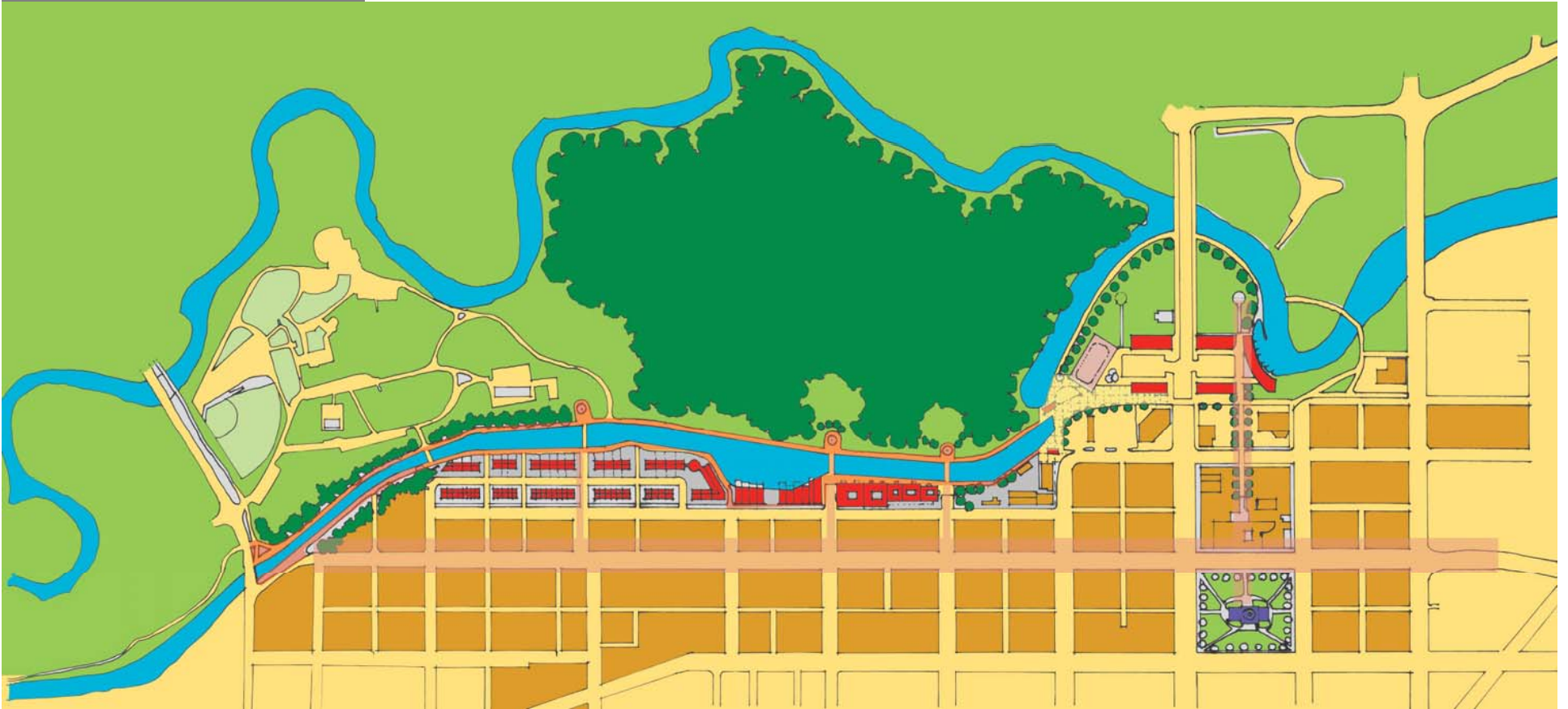








Arriving at Trail's Head House



# Master Plan

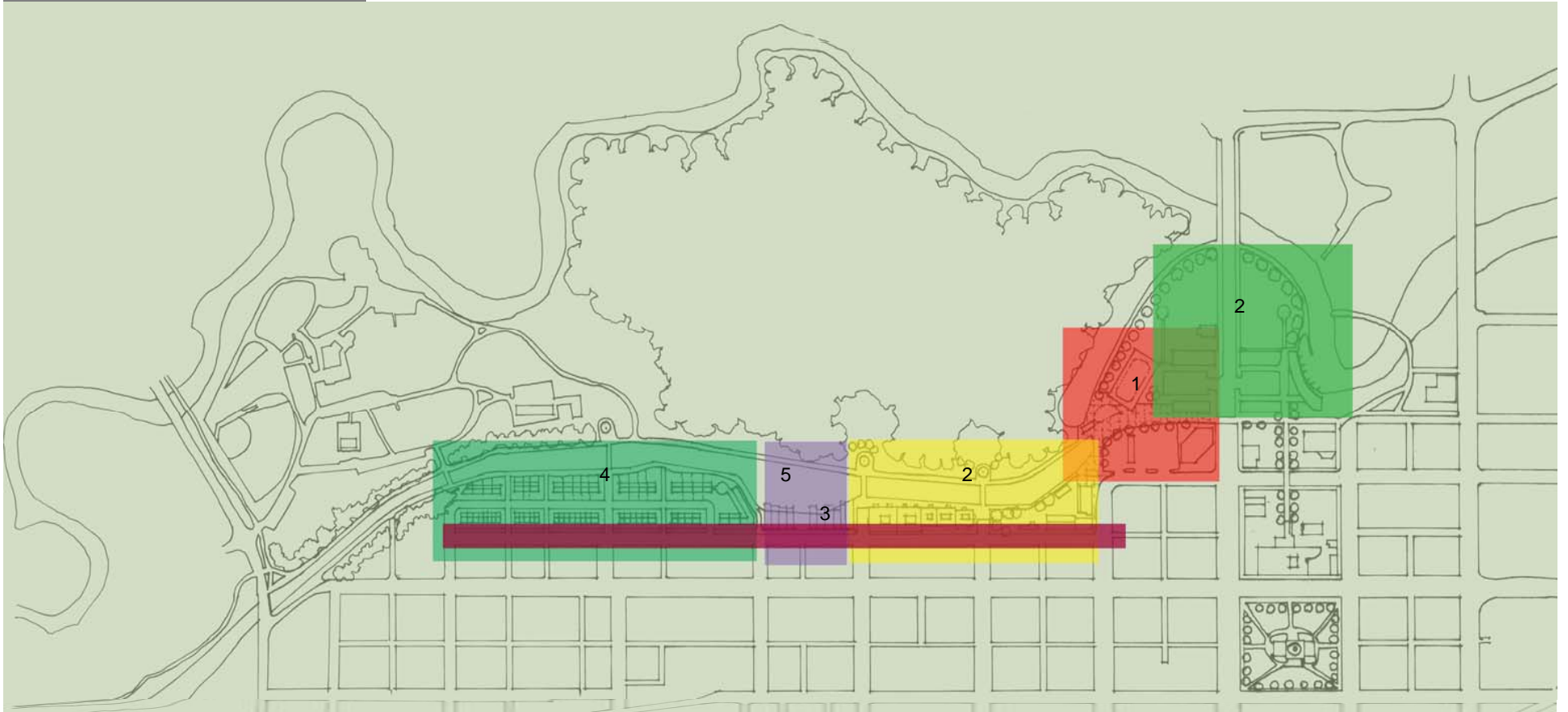


## Public/Private Investment

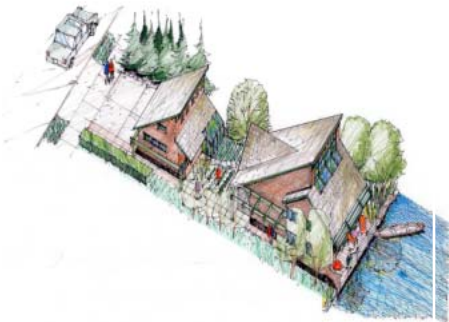
-  Public Investment
-  Existing CBD
-  Private Investment
-  Open Space/Future Expansion



# Master Plan



Project Phasing



isometric

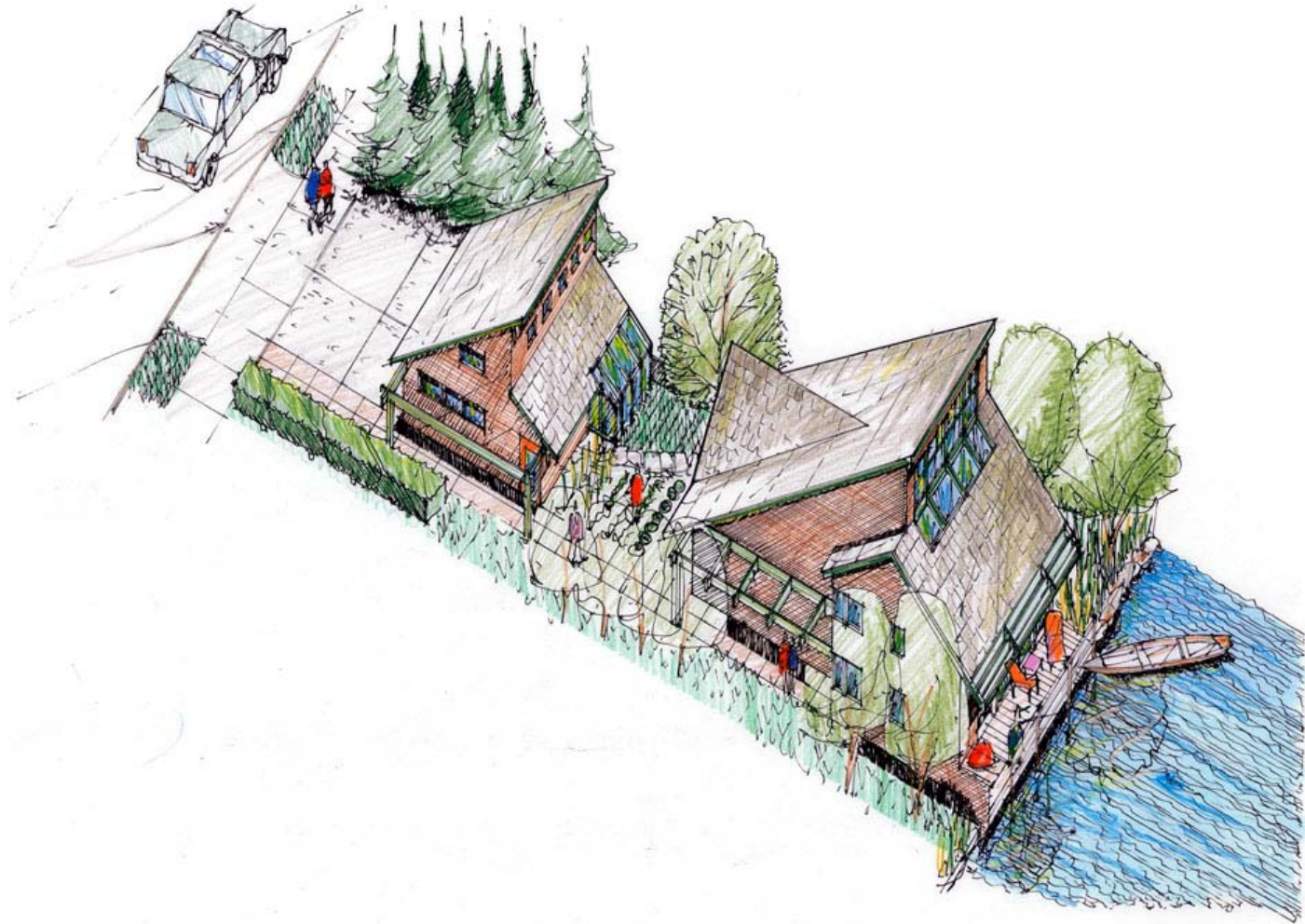


plan



section

Canal Housing Type 1



Isometric View of Canal Housing Unit





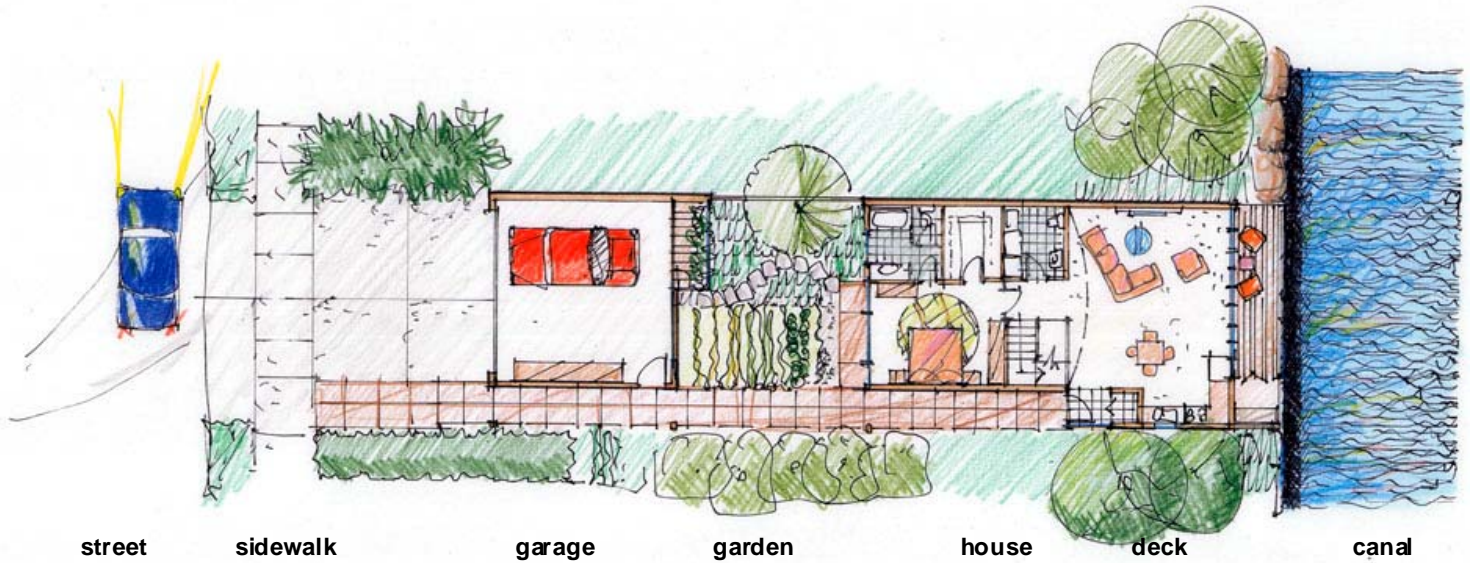
isometric



plan



section



## Canal Housing Type 1

## Canal Housing Unit Plan



isometric

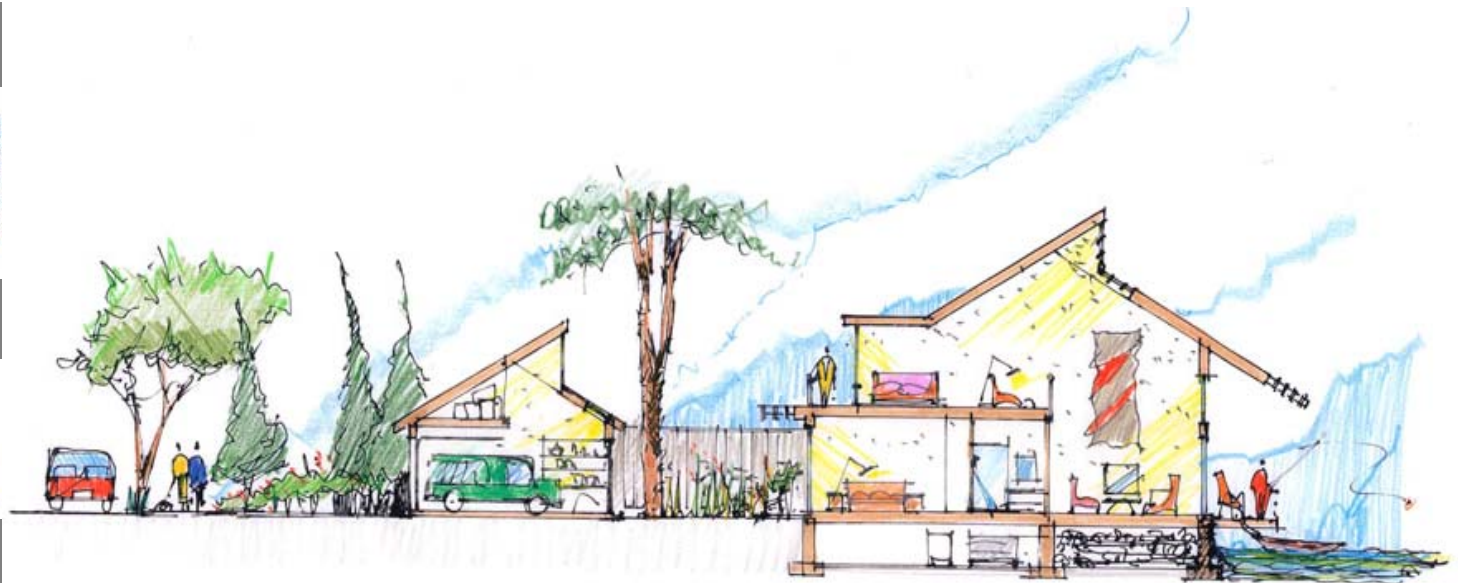


plan



section

## Canal Housing Type 1



street

sidewalk

garage/workspace

garden

1200 sf. house

deck

canal

## Canal Housing Unit Section





street elevation



canal elevation



plans



section



Canal Housing Type 2



Street Elevation



street elevation



canal elevation



plans



section  
Canal Housing Type 2



Canal Elevation





street elevation



canal elevation



plans



section  
Canal Housing Type 2



canal

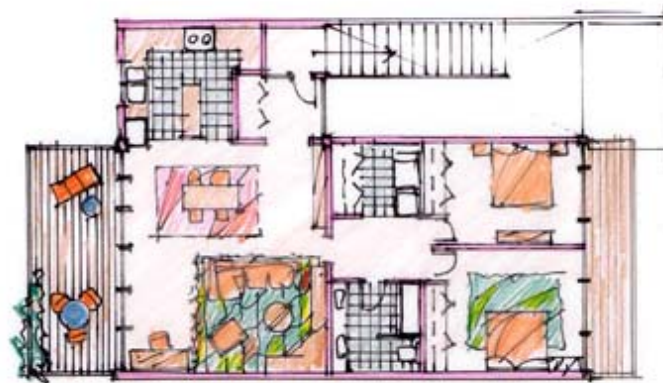
canal walk



courtyard workspace

garage

First Floor Plan |Workspace|



Second Floor Plan |Living Unit 1200 sf.|

Live/Work Unit Plans



street elevation



canal elevation



plans



section

Canal Housing Type 2



Live/Work Unit Section





street elevation



canal elevation



plans



section



Canal Housing Type 3



Street Elevation



street elevation



canal elevation



plans



section



Canal Housing Type 3



Canal Elevation





street elevation



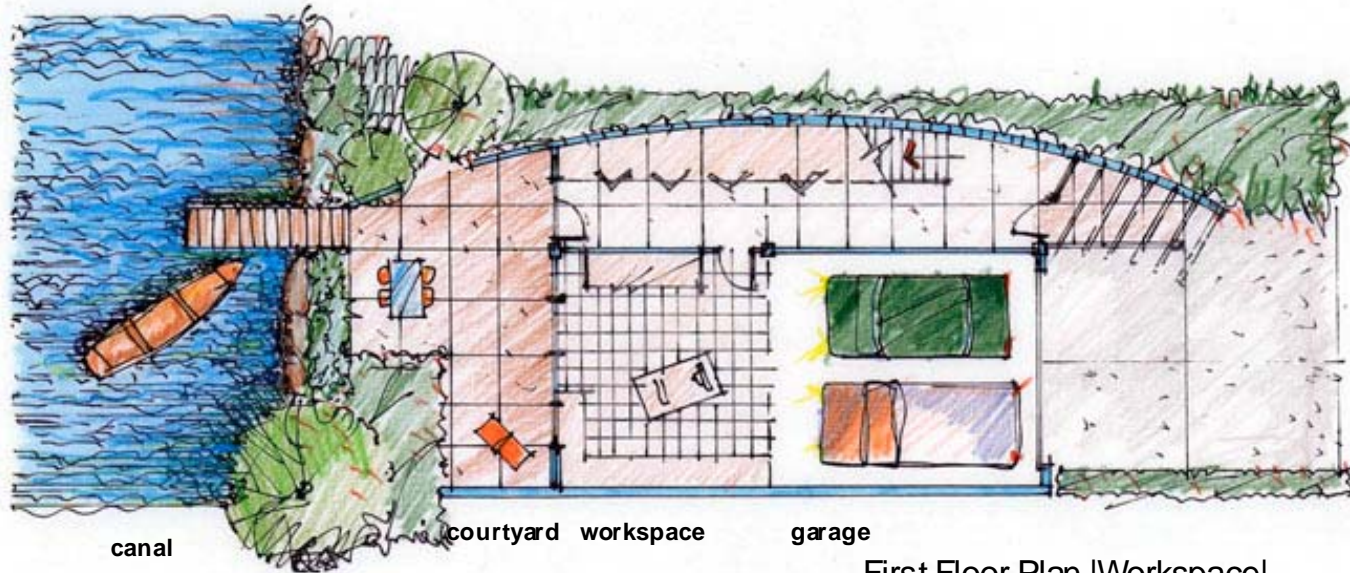
canal elevation



plans



section  
Canal Housing Type 3



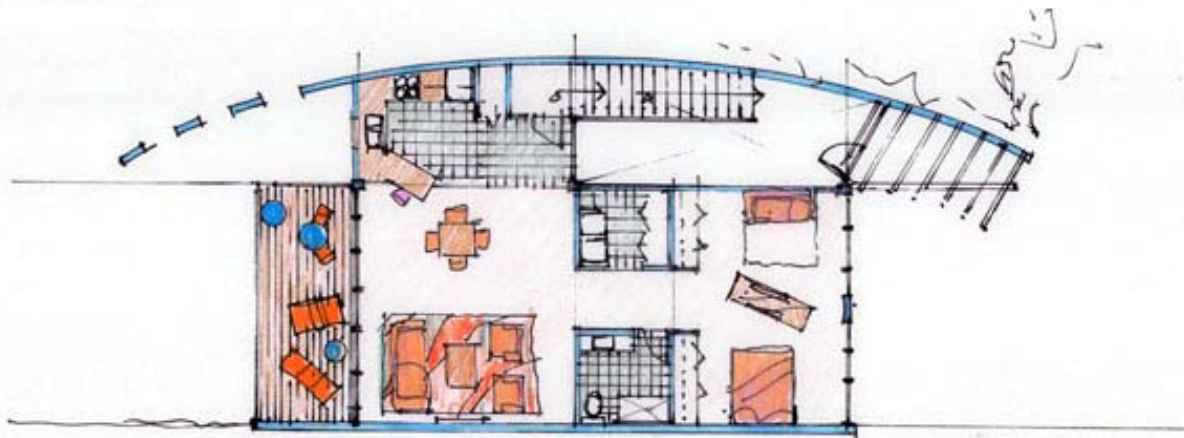
canal

courtyard

workspace

garage

First Floor Plan |Workspace|

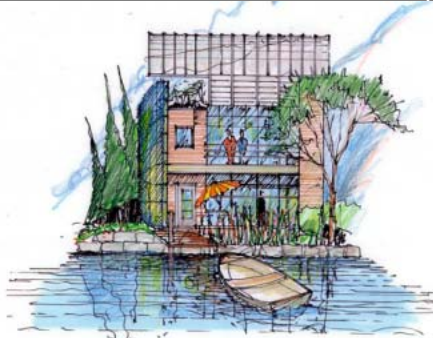


Second Floor Plan |Living Unit 1200 sf.|

Live/Work Unit Plans



street elevation



canal elevation

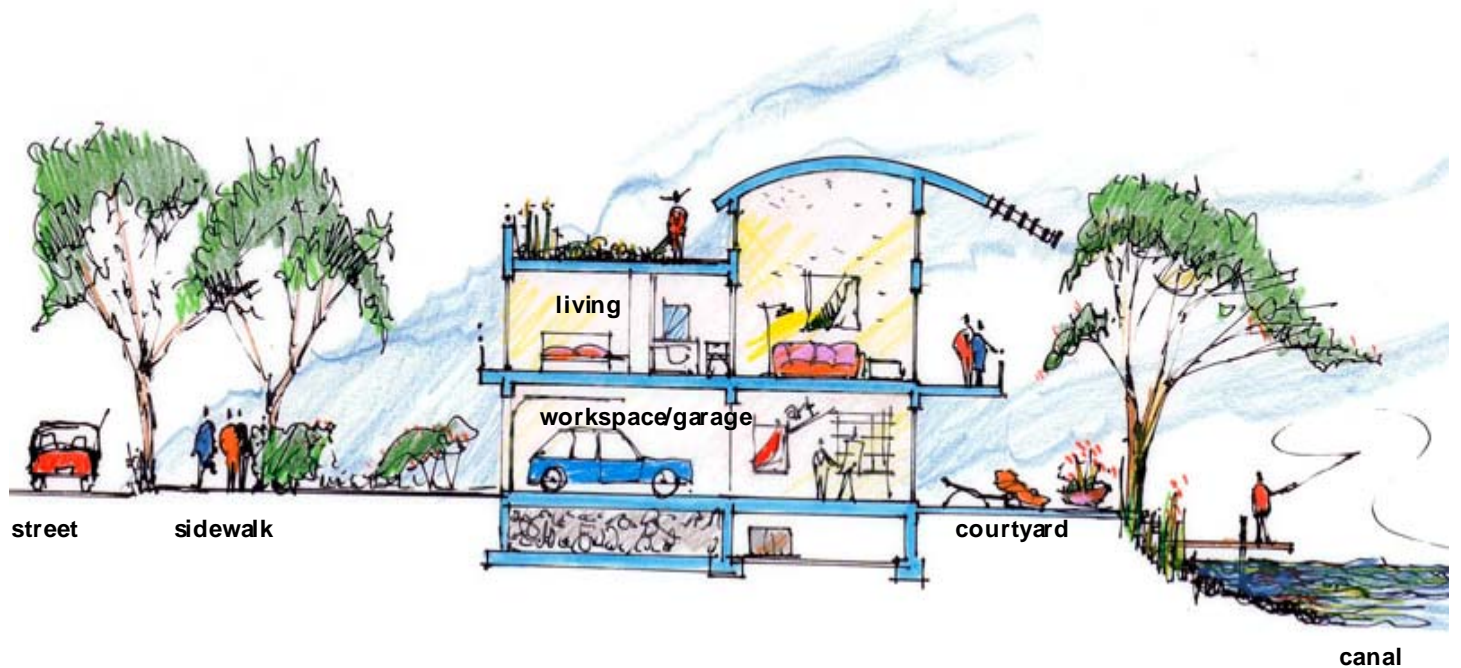


plans



section

Canal Housing Type 3



Live/Work Unit Section





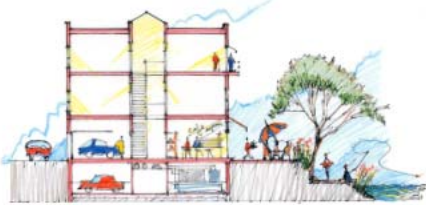
street elevation



canal elevation



plans



section

Building Reuse Scheme A



Existing Building Elevation



street elevation



canal elevation



plans



section

Building Reuse Scheme A



Building Elevation Scheme A





street elevation



canal elevation

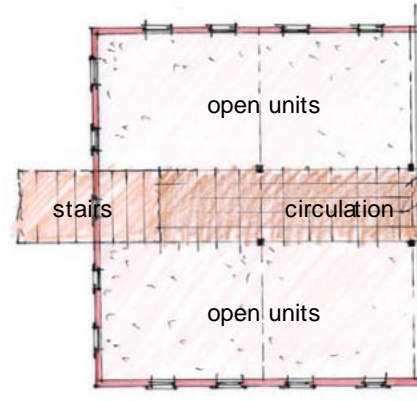


plans

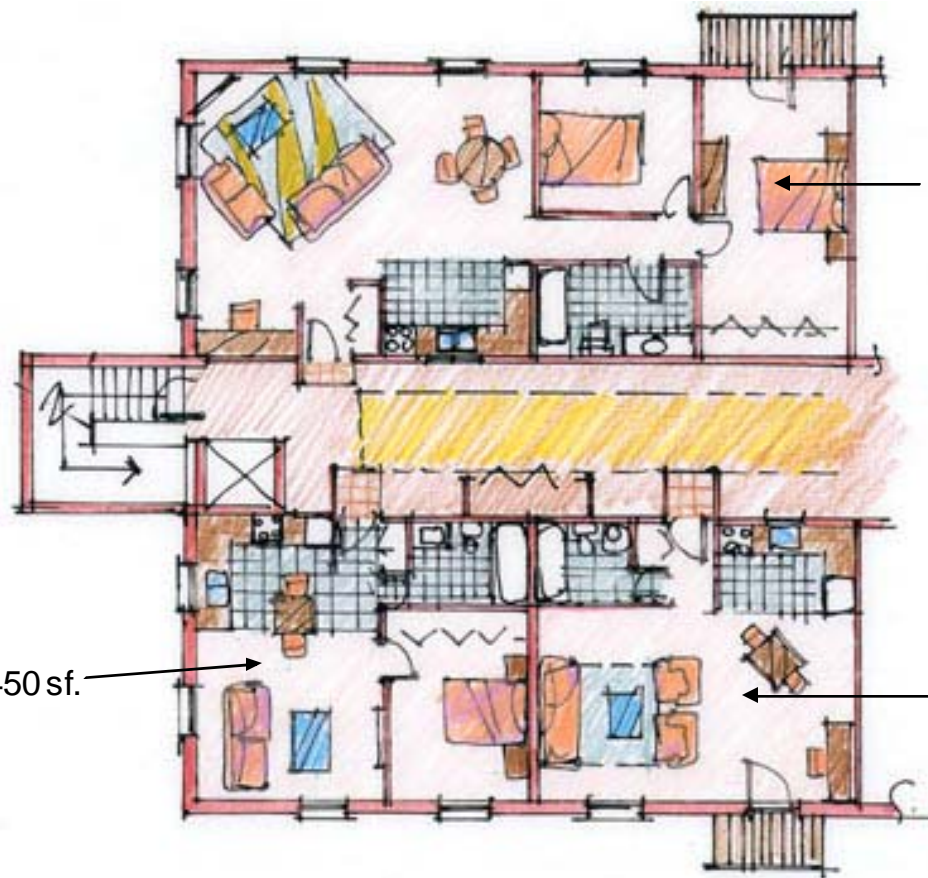


section

Building Reuse Scheme A



Conceptual Plan



Unit 1 – 900 sf.

Unit 2 – 450 sf.

Unit 3 – 450 sf.

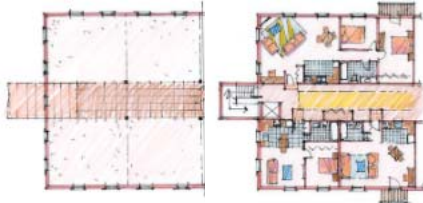
Unit Plan Scheme A



street elevation



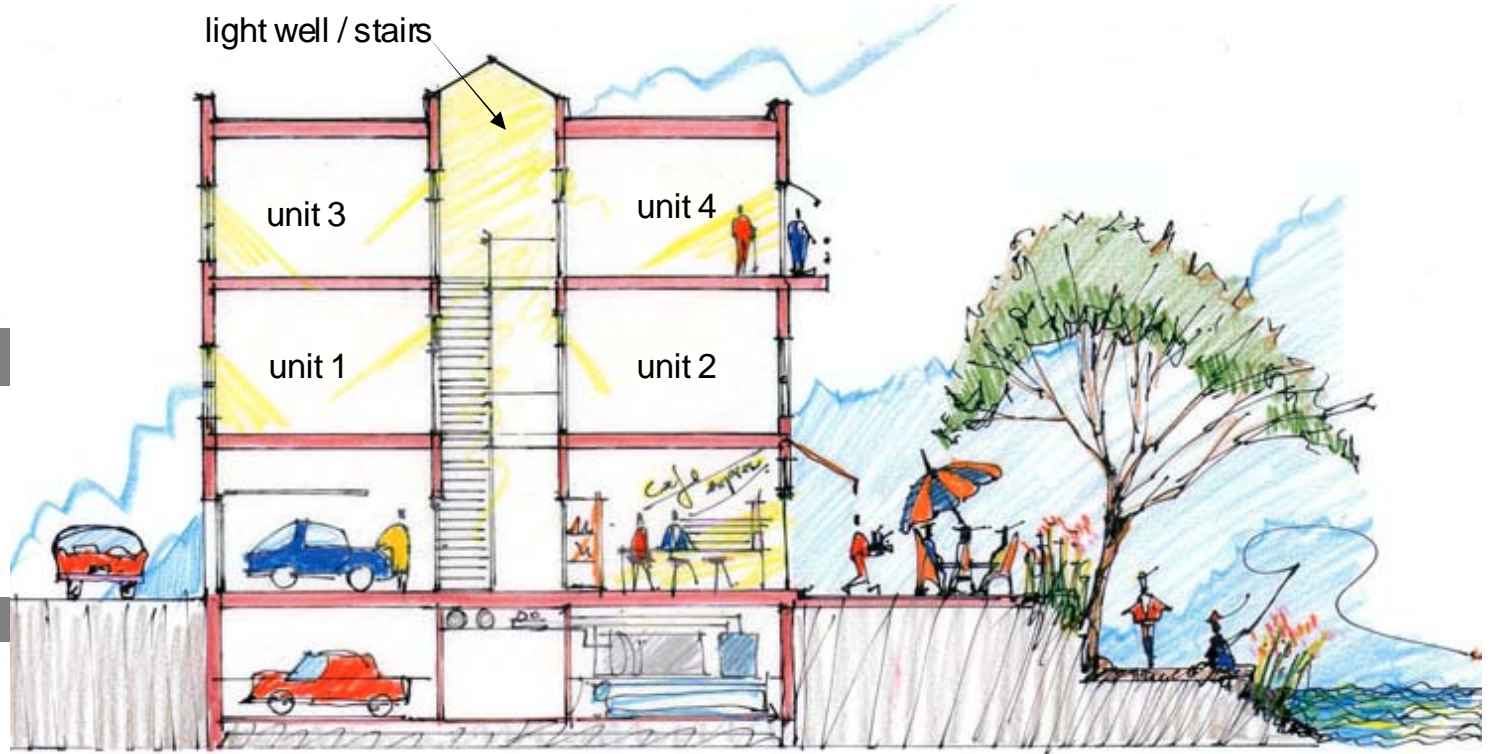
canal elevation



plans



section



Scheme A Section





canal elevation



plans



section

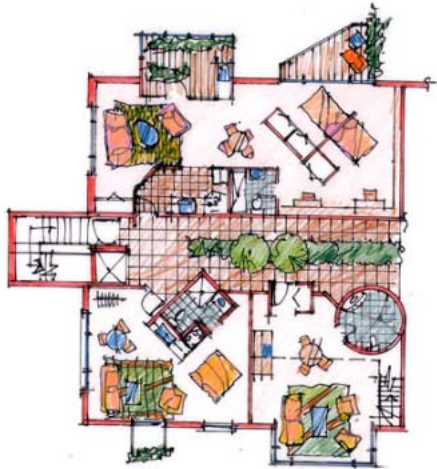
Building Reuse Scheme B



Scheme B Elevation



canal elevation

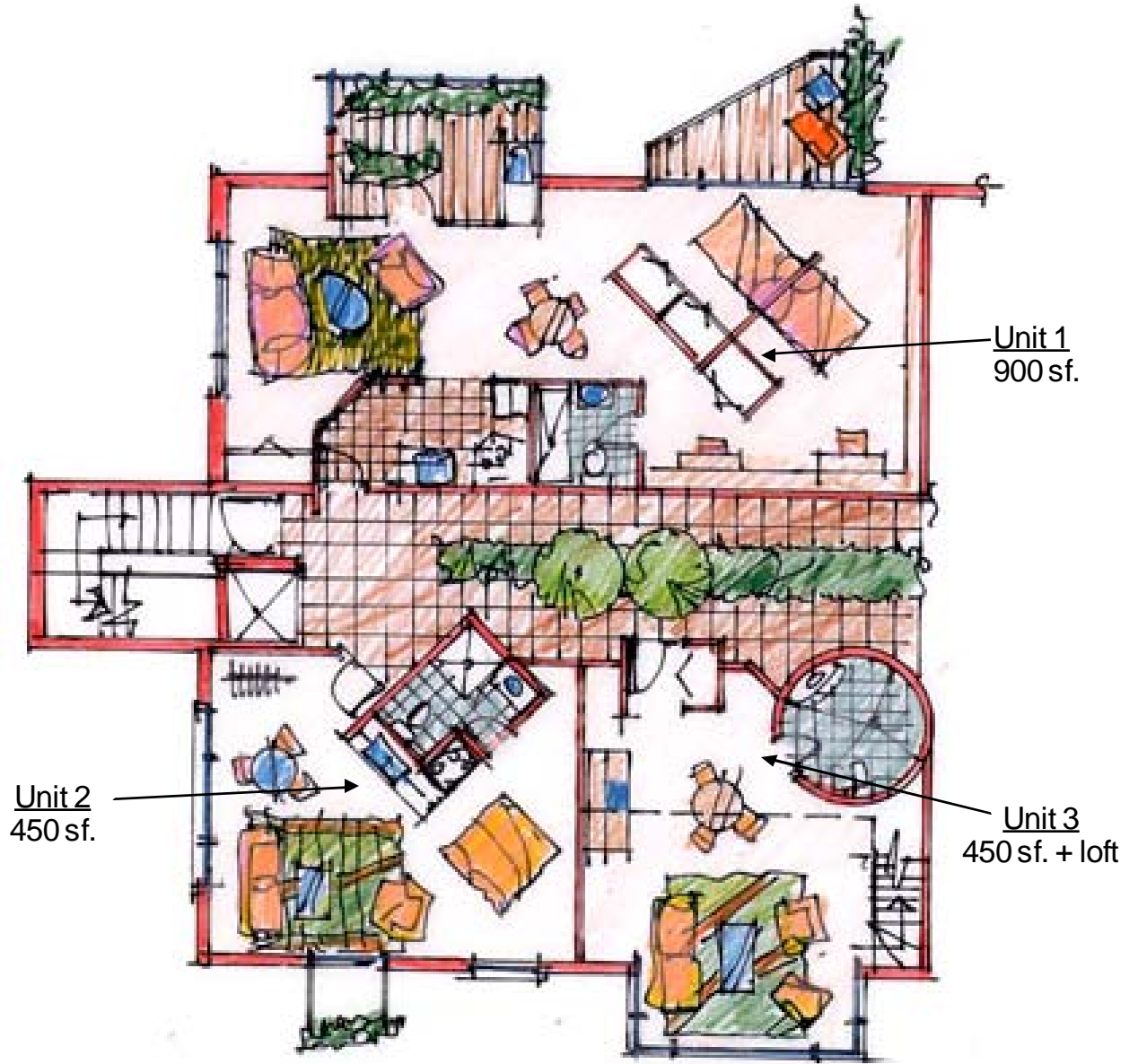


plans



section

Building Reuse Scheme B



Unit 1  
900 sf.

Unit 2  
450 sf.

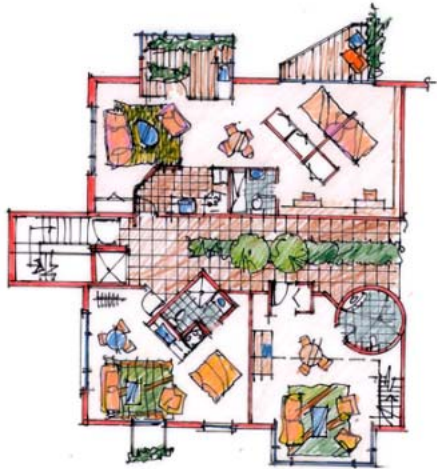
Unit 3  
450 sf. + loft

Scheme B Plans





canal elevation

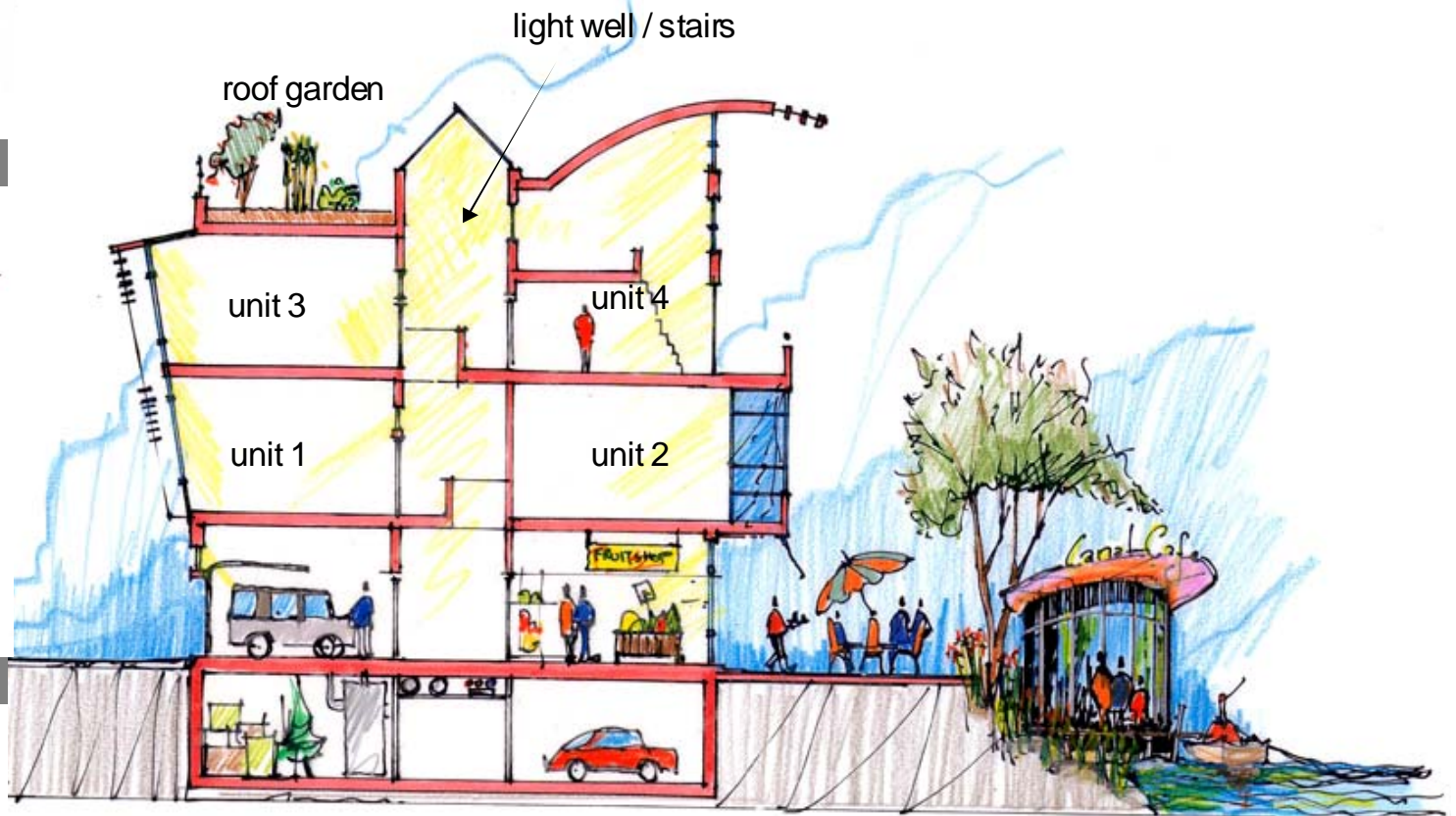


plans



section

Building Reuse Scheme B



Scheme B Section



# Goshen Canal Revitalization Project

Presented by  
Building Better Communities  
Ball State University

# Thank You



Harry Eggink, Michel Mounayar, Jason Johnson

9/15/05

