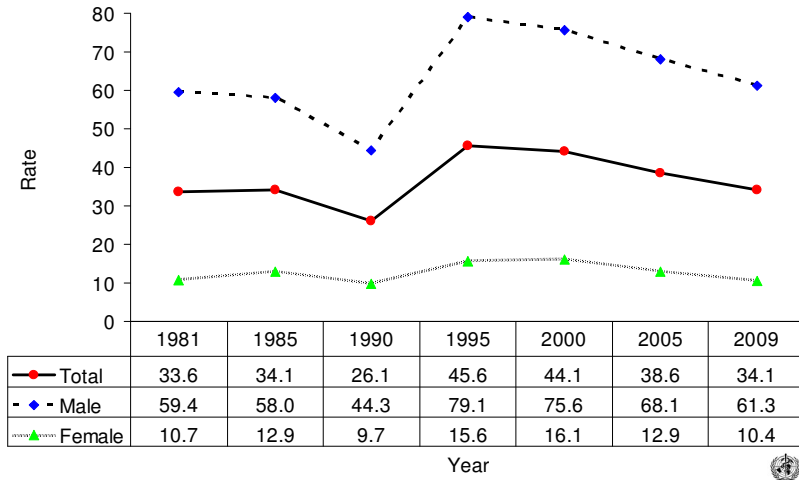
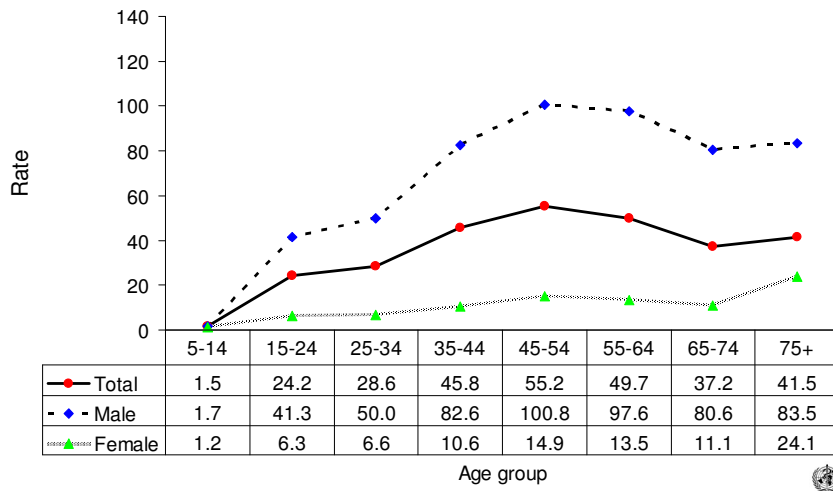


Suicide rates (per 100,000), by gender, Lithuania, 1981-2009.



Suicide rates (per 100,000), by gender and age, Lithuania, 2009.



Number of suicides by age group and gender. LITHUANIA, 2009.

Age (years)	5-14	15-24	25-34	35-44	45-54	55-64	65-74	75+	All
Males	3	109	116	195	233	148	91	57	952
Females	2	16	15	26	39	27	21	40	186
Total	5	125	131	221	272	175	112	97	1138