

VETERANS MEMORIAL PARKWAY

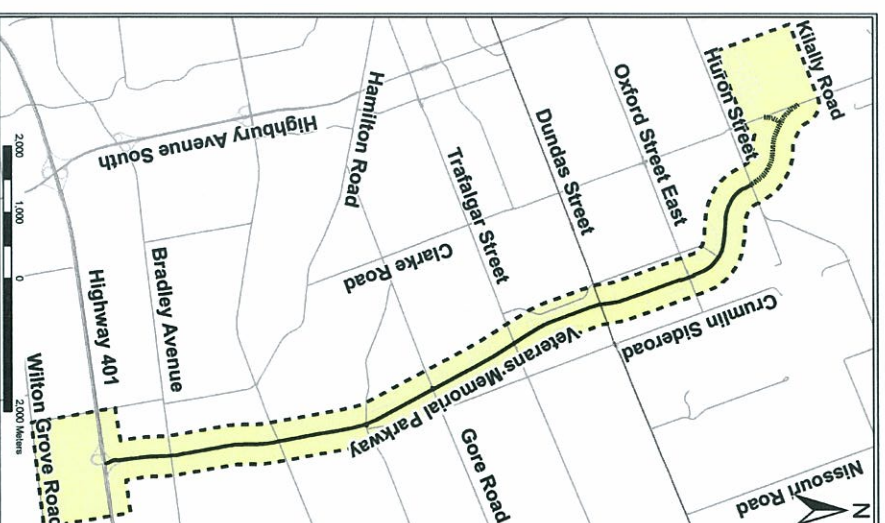
Interchange Class Environmental Assessment Study and Concurrent Application
to Amend the Official Plan and Zoning By-Law

PUBLIC INFORMATION CENTRE NO. 1 MAY 30, 2007

Study Area

WELCOME PLEASE SIGN IN

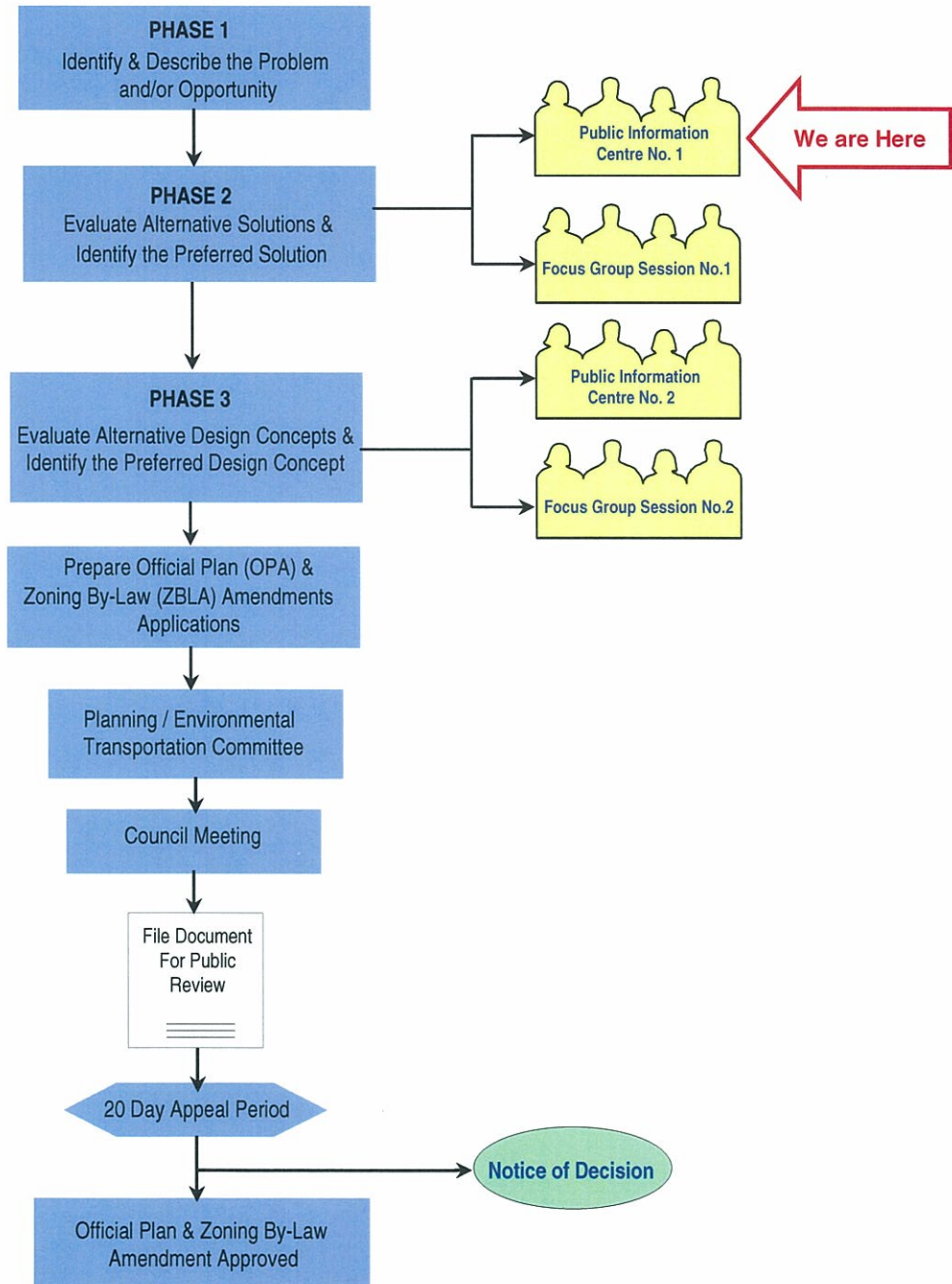
- ❖ **Please sign in** on the sheet provided so that we will have a record of your attendance.
- ❖ **If you have any questions, the Project Team members will be pleased to discuss them with you.**
- ❖ **Please take a Comment Sheet and review the display material.** Feel free to provide your comments in writing. Please place your completed comment sheets in the Comment Box or mail/fax to the City of London or the Consultant Team by **June 15, 2007** (contact information provided on the handout).



VETERANS MEMORIAL PARKWAY

Interchange Class Environmental Assessment Study and Concurrent Application to Amend the Official Plan and Zoning By-Law

OVERVIEW OF THE STUDY PROCESS



VETERANS MEMORIAL PARKWAY

Interchange Class Environmental Assessment Study and Concurrent Application
to Amend the Official Plan and Zoning By-Law

STUDY OVERVIEW

The City of London is proposing to identify interchange/overpass locations along the Veterans Memorial Parkway (VMP) formerly Airport Road to best meet the functional requirements of the corridor at build-out (maximum development condition). The Municipal Council for the City of London is considering future amendments to the City's Official Plan and Zoning By-Law that will assist in implementing the preferred functional design of the corridor at build-out.

Study Process

The study is being conducted through an Integrated Environmental Assessment (EA) process in accordance with the requirements of both the Environmental Assessment Act and the Planning Act. Approvals for the recommendations sought out by this study are subject to the Planning Act.

Purpose of the First Public Information Centre (PIC)

The first PIC is to introduce the project, to inform you of our progress to date, and to obtain your comments on the information provided and the project in general.



London
CANADA



Giffels
An Ingenium Group Company

VETERANS MEMORIAL PARKWAY

Interchange Class Environmental Assessment Study and Concurrent Application
to Amend the Official Plan and Zoning By-Law

RELATED STUDY RECOMMENDATIONS FOR VETERANS MEMORIAL PARKWAY

- ❖ City of London Official Plan
 - Existing City of London Official Plan Schedule ‘C’ designates the Veterans Memorial Parkway (VMP) formerly Airport Road, as an expressway.
- ❖ City of London Long Term Transportation Corridor Protection Study (LTCP) (2001)
 - The LTCP identified that the long term travel needs for the “Full Build-Out” scenario can be satisfied at acceptable Levels of Service with combined arterial and partial freeway corridors. “Full Build-Out” occurs when all vacant lands within the current urban boundaries of the City are completely developed in conformance with the City’s Official Plan. The LTCP recommended that the VMP be classified as a 4-lane freeway for corridor protection purposes.
- ❖ Airport Road Widening Environmental Study Report (2003)
 - Recommended a 4-lane arterial road (two northbound and two southbound through lanes) with auxiliary turn lanes at intersections to satisfy future capacity deficiencies to the Year 2021.
- ❖ City of London Master Transportation Plan (2004)
 - The London Master Transportation Plan forecasts indicated that a controlled access 4-lane freeway will be required to meet the VMP corridor demands at full build-out.



London
CANADA

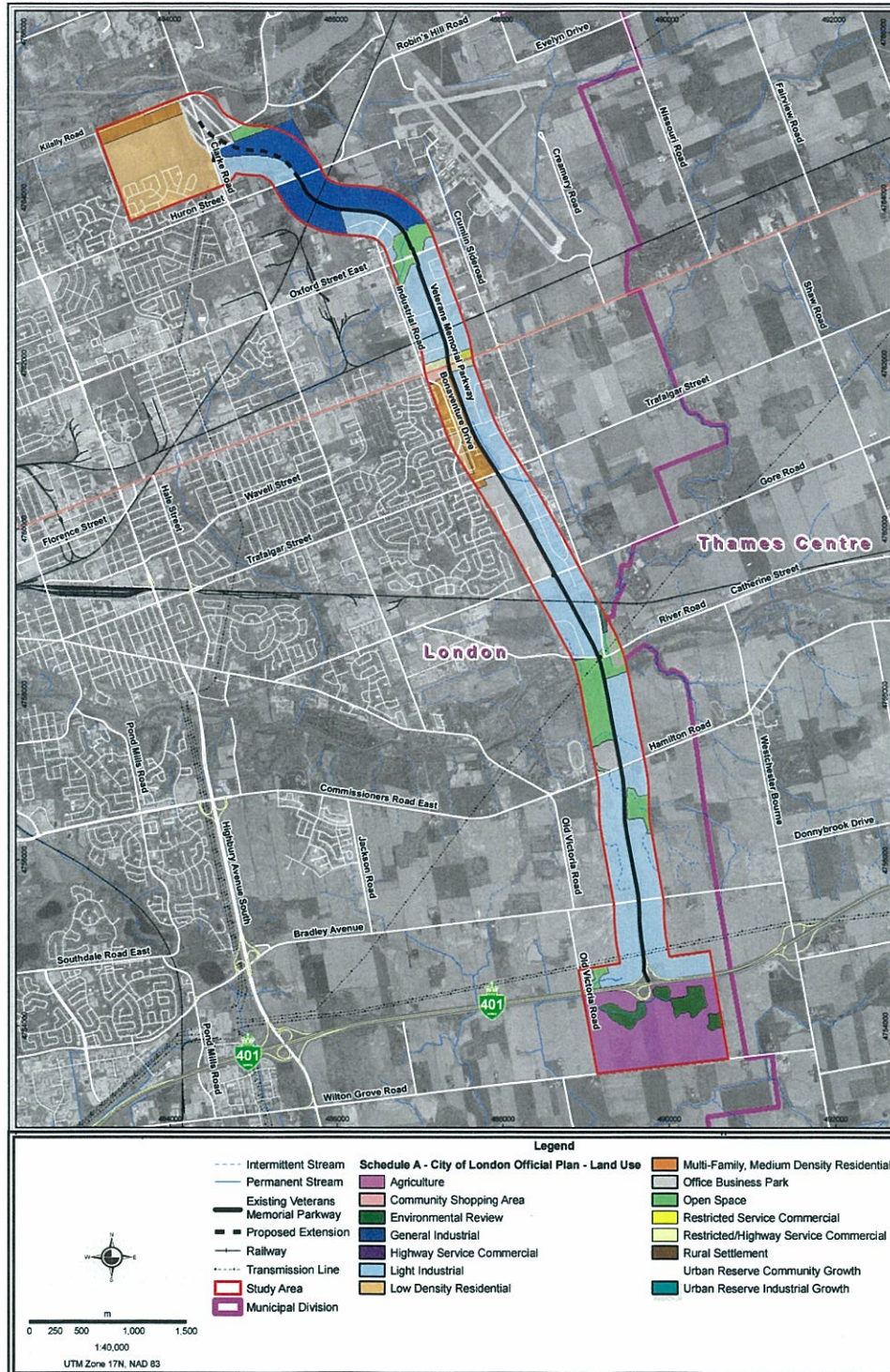


Giffels
An Ingenium Group Company

VETERANS MEMORIAL PARKWAY

Interchange Class Environmental Assessment Study and Concurrent Application to Amend the Official Plan and Zoning By-Law

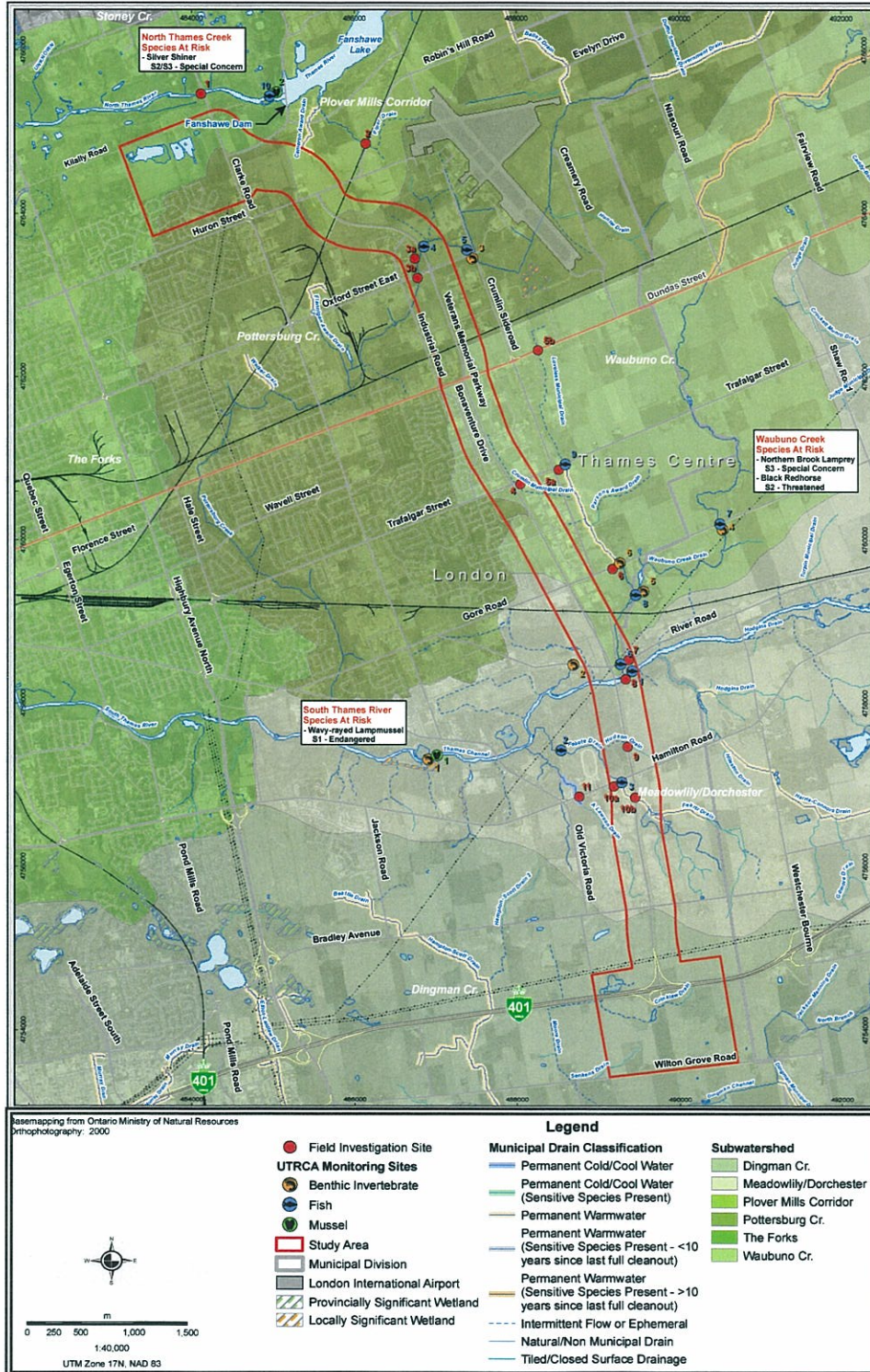
EXISTING NATURAL FEATURES – LAND USE



VETERANS MEMORIAL PARKWAY

Interchange Class Environmental Assessment Study and Concurrent Application to Amend the Official Plan and Zoning By-Law

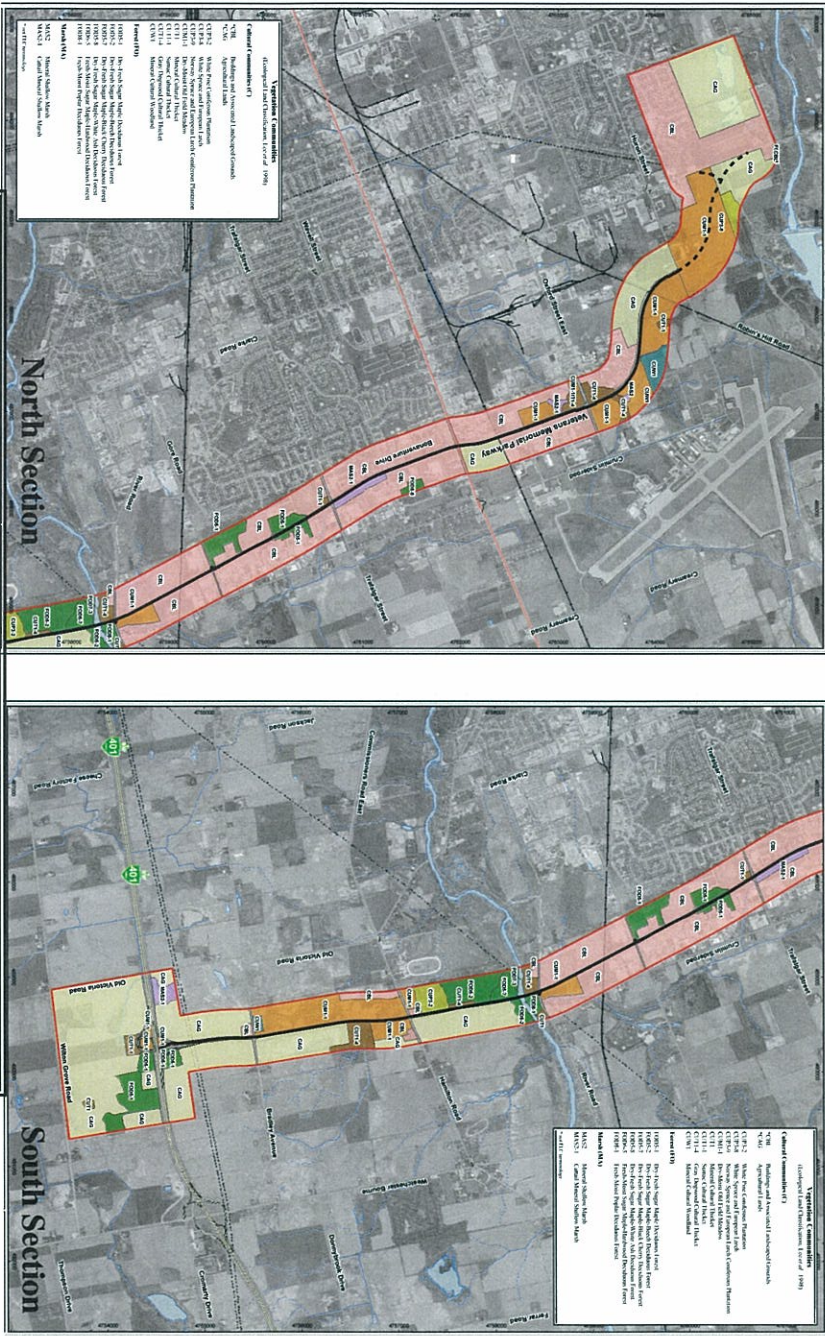
EXISTING NATURAL FEATURES – AQUATIC



VETERANS MEMORIAL PARKWAY

Interchange Class Environmental Assessment Study and Concurrent Application to Amend the Official Plan and Zoning By-Law

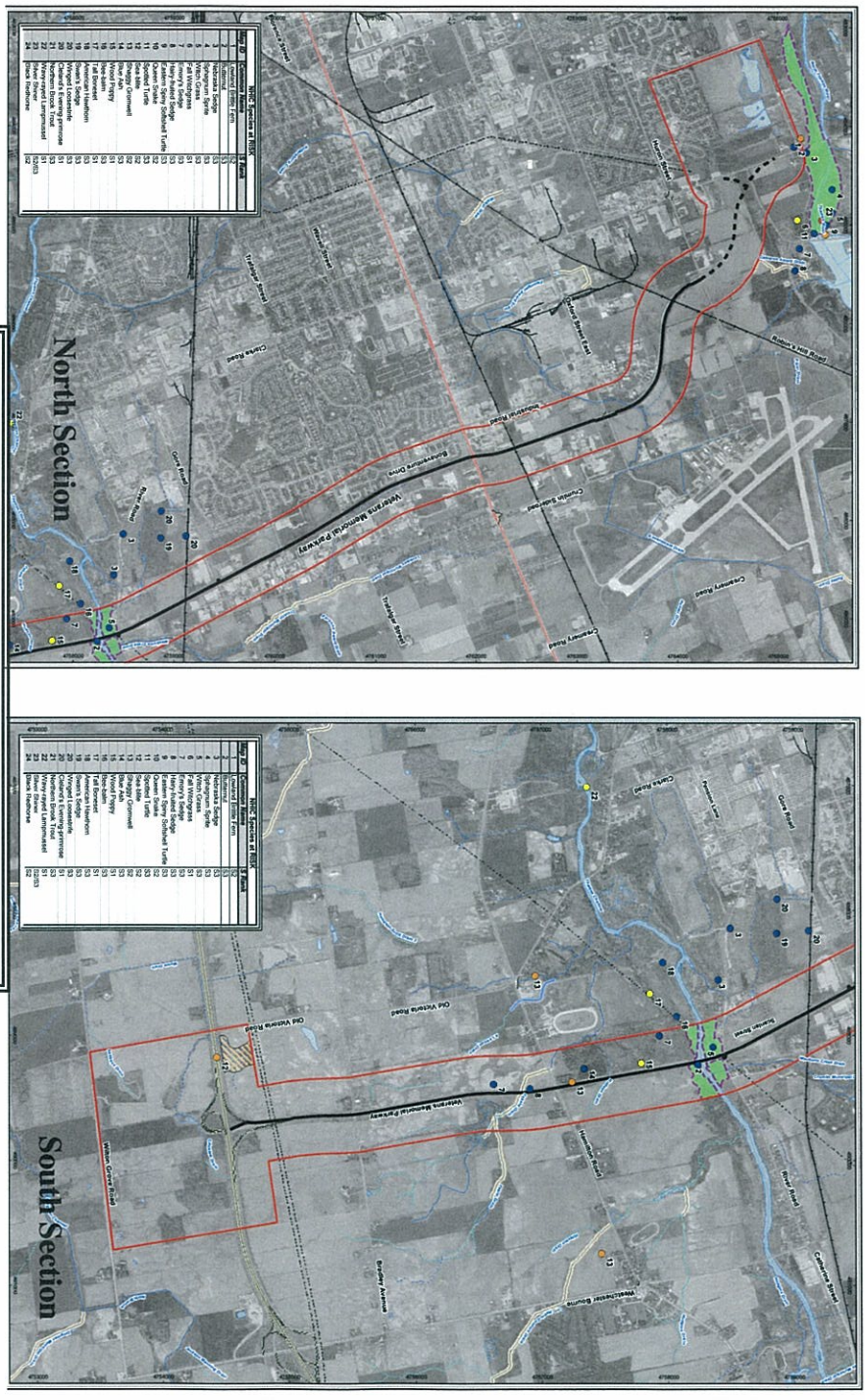
EXISTING NATURAL FEATURES – TERRESTRIAL



VETERANS MEMORIAL PARKWAY

Interchange Class Environmental Assessment Study and Concurrent Application
to Amend the Official Plan and Zoning By-Law

EXISTING NATURAL FEATURES – SIGNIFICANT FEATURES



VETERANS MEMORIAL PARKWAY

Interchange Class Environmental Assessment Study and Concurrent Application
to Amend the Official Plan and Zoning By-Law

POPULATION AND EMPLOYMENT GROWTH

Population Land Use Forecast

	2001	2024	Full Build-Out
Study Area ¹	NA	75,883	120,480
City of London	353,400	437,110	675,324

Employment (Employees) Land Use Forecast

	2001	2024	Full Build-Out
Study Area ¹	NA	37,218	68,508
City of London	178,700	217,015	357,418

Note: ¹ Study Area limits are defined as the area inclusive of:

North Limits: Kitlally Road

East Limits: Crumlin Side Road (north of Highway 401) and Westchester Bourne (south of Highway 401)

South Limits: Westminster Drive

West Limits: Highbury Avenue

VETERANS MEMORIAL PARKWAY

Interchange Class Environmental Assessment Study and Concurrent Application
to Amend the Official Plan and Zoning By-Law

EXISTING AND FUTURE TRAVEL DEMAND ON VETERANS MEMORIAL PARKWAY (VMP)

Location	Estimated 2006 Daily Traffic Volumes	Estimated Full Build-Out Daily Traffic Volumes	Estimated Increase in Daily Traffic Volumes (%)
VMP South of Bradley Road	16,400	20,200	23%
VMP South of Hamilton Road	21,800	30,000	38%
VMP South of Gore Road	25,000	37,200	19%
VMP South of Trafalgar Street	23,000	41,400	80%
VMP South of Dundas Street	22,000	43,700	99%
VMP South of Oxford Street	19,300	47,600	147%
VMP South of Huron Street	9,000	36,000	300%

VETERANS MEMORIAL PARKWAY

Interchange Class Environmental Assessment Study and Concurrent Application
to Amend the Official Plan and Zoning By-Law

PROBLEM BEING ADDRESSED

Veterans Memorial Parkway (VMP) is a key corridor providing one of five accesses from the provincial freeway system to the City of London. The VMP also plays a significant role distributing internal traffic. The anticipated future growth in the area will result in an increase in traffic volumes and congestion, particularly at the intersections. This increase will ultimately decrease the level of service and impact traffic safety along this corridor.

OPPORTUNITY TO BE REALIZED

Improvements within the VMP corridor, with emphasis on the intersecting roadways, are anticipated to accommodate the ultimate traffic growth under full build-out conditions which will be designed to meet the City's mobility and safety needs. In order to accommodate these improvements, the Official Plan and Zoning By-Law will need to be amended.



London
CANADA



Giffels
An Ingenium Group Company

VETERANS MEMORIAL PARKWAY

Interchange Class Environmental Assessment Study and Concurrent Application
to Amend the Official Plan and Zoning By-Law

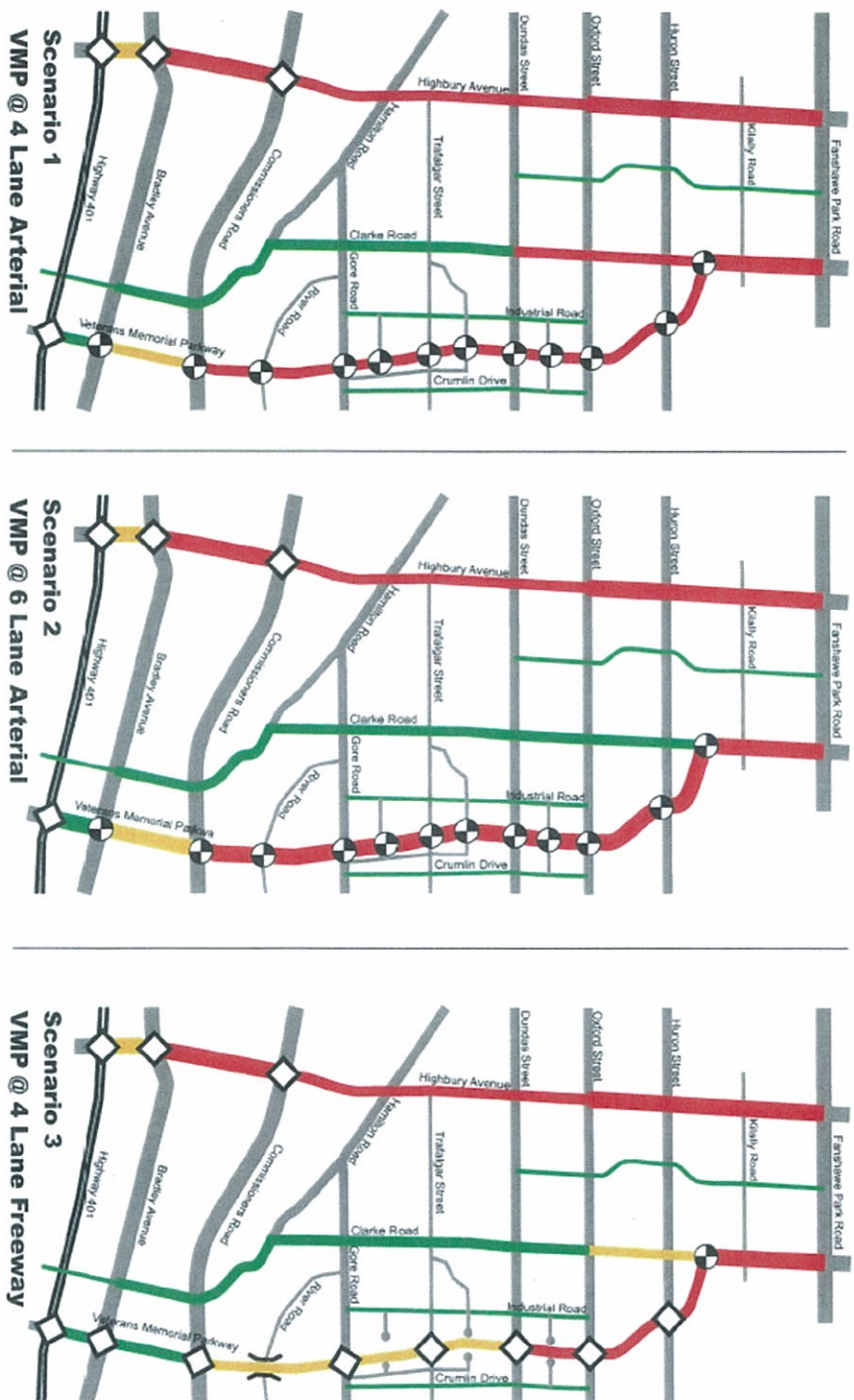
ALTERNATIVE SOLUTIONS UNDER CONSIDERATION

- ❖ **Alternative Solution #1: Do Nothing** – The “do nothing” alternative is included as a benchmark for the assessment of the other planning alternatives. No changes or improvements would be done to the existing VMP.
- ❖ **Alternative Solution #2: 6-Lane Arterial** – Plan for widening the existing VMP to 6 lanes.
- ❖ **Alternative Solution #3: 4-Lane Freeway** – Plan for a 4 lane freeway within the VMP corridor.

VETERANS MEMORIAL PARKWAY

Interchange Class Environmental Assessment Study and Concurrent Application
to Amend the Official Plan and Zoning By-Law

ALTERNATIVE SOLUTIONS UNDER CONSIDERATION CONT'D



LEGEND

w/c ratio ≥ 1.00

0.85 \geq w/c > 1.00

w/c < 0.85

Cul-de-Sac

2 Lanes

4 Lanes

6 Lanes

Highway Interchange

Grade Separation

Signalized Intersections on VMP

Not To Scale



VETERANS MEMORIAL PARKWAY

Interchange Class Environmental Assessment Study and Concurrent Application
to Amend the Official Plan and Zoning By-Law

STUDY NETWORK PERFORMANCE MEASURES FULL BUILD-OUT CONDITION

Road Network Performance – Veterans Memorial Parkway (VMP) Study Area

Network Scenario	Vehicle Kilometers of Travel	Vehicle Hours of Travel	% Network Congested
VMP as 4-Lane Arterial	98,443	1,743	52%
VMP as 6-Lane Arterial	103,384	1,750	47%
VMP as 4-Lane Freeway	111,583	1,735	44%

Note: Trip lengths in kilometers are greater with a freeway but the overall travel time is slightly shorter than an arterial road.

VETERANS MEMORIAL PARKWAY

Interchange Class Environmental Assessment Study and Concurrent Application
to Amend the Official Plan and Zoning By-Law

PRELIMINARY RECOMMENDED SOLUTION

As a result of a transportation network analysis involving the three alternative solutions, **the preliminary recommended solution is to plan for a 4-Lane**

Freeway at full build-out conditions for the following reasons:

- ❖ With the VMP as an arterial road, a number of at grade intersections experience excessive delays and result in traffic congestion during the peak periods.
- ❖ A freeway design eliminates many of the high volume conflict movements and offers the potential to develop efficient interchange solutions.
- ❖ A freeway would reduce the congestion on the road network and improve overall safety while maintaining shorter travel time along the entire corridor.



London
CANADA



Giffels
An Ingenium Group Company

VETERANS MEMORIAL PARKWAY

Interchange Class Environmental Assessment Study and Concurrent Application
to Amend the Official Plan and Zoning By-Law

IDENTIFICATION OF ALTERNATIVE DESIGN CONCEPTS

Since Alternative Solution #3: Plan for a 4-Lane Freeway was identified as the recommended solution the following Alternative Design Concepts are being considered:

i) Interchange Connections

- | | |
|------------------|--------------------|
| • Highway 401 | • Trafalgar Street |
| • Bradley Avenue | • Dundas Street |
| • Hamilton Road | • Oxford Street |
| • Gore Road | • Huron Street |

ii) Non Interchange Connections

- | | |
|---|------------------------------|
| • River Road/Catherine Street – Grade separated
(no connection to VMP) | • Admiral Drive (cul de sac) |
| • Tartan Drive (cul de sac) | • Page Street (cul de sac) |
- iii) Possible At-Grade or Grade Separated Connections
- Clarke Road
 - Kilally Road

iv) Possible extension of VMP to Wilton Grove Road (at grade) involves reformatting Highway 401 interchange to at grade connections with VMP.



London
CANADA



Giffels
An Ingenium Group Company

VETERANS MEMORIAL PARKWAY

Interchange Class Environmental Assessment Study and Concurrent Application
to Amend the Official Plan and Zoning By-Law

IDENTIFICATION OF ALTERNATIVE DESIGN CONCEPTS CONT'D

- ❖ Where possible, stay within the existing right-of-way.
- ❖ Tall wall median barrier versus a grassed median area.
- ❖ Investigate the feasibility of incorporating transportation demand/system management measures.
- ❖ Incorporate context sensitive design features (i.e. landscaping).
- ❖ Identify and address potential environmental concerns (use best management practices).

VETERANS MEMORIAL PARKWAY

Interchange Class Environmental Assessment Study and Concurrent Application to Amend the Official Plan and Zoning By-Law

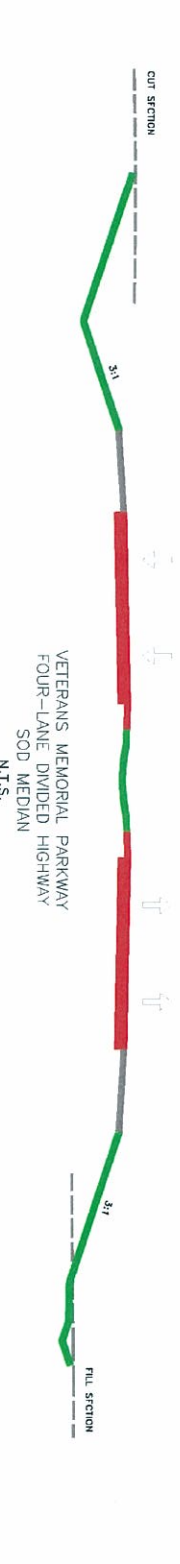
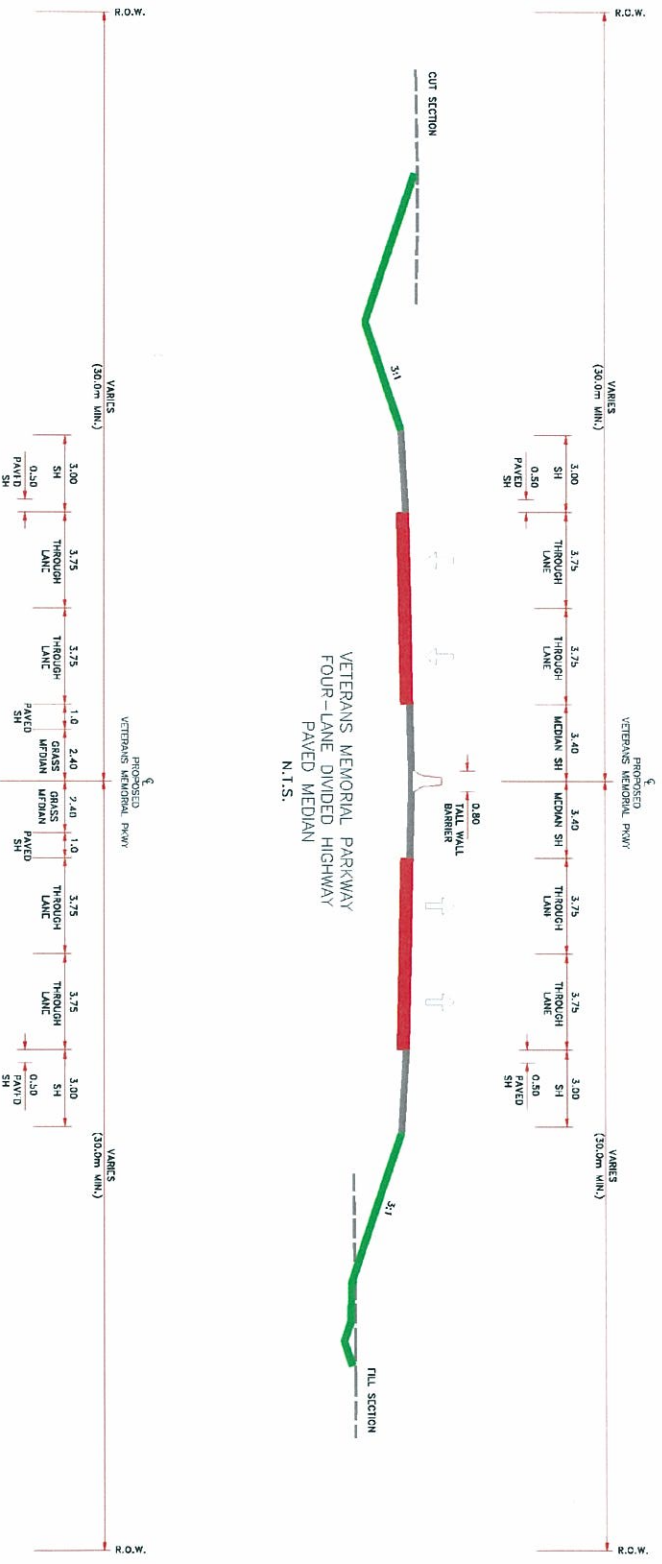
PROPOSED EVALUATION CRITERIA FOR ALTERNATIVE DESIGN CONCEPTS

Criteria / Sub-Factor	Description / Measure
Transportation	
Accommodation of Future Travel Demands	• Ability to accommodate long term vehicular demands.
Travel Safety	• Potential safety improvements for all users in the corridor.
Emergency Service Vehicle Response Times	• Potential impact on the response times of emergency vehicles.
Enhancement of the Road Network	• Ability to provide an enhancement to the VMP to increase its capacity, for example transit and High Occupancy Vehicle (HOV) lanes.
Commercial Goods Movement	• Ability to move commercial goods efficiently without compromising the road network.
Compatibility with the City of London's Official Plan and Long Term Transportation Corridor Protection Study	• Support for long term road network plans.
Natural Environment	
Watercourse/Fisheries and Aquatic Habitat	• Potential impacts to watercourses and fish species.
Vegetation and Terrestrial Habitat	• Potential area (Ha) disturbed measured from beyond the existing road edge to new edge.
Wildlife and Wildlife Corridors	• Potential impacts to wildlife species and habitat.
Trails and Recreation	• Potential impacts to trail and recreations systems.
Wetlands and Environmental Sensitive Areas	• Potential area (Ha) disturbed measured from beyond the existing road edge to new edge.
Social Environment	
Property Impacts (Residential, Commercial, Institutional, Industrial, Agricultural)	• Potential increase in right-of-way requirements (Ha). • Potential disruption or displacement of property and/or structures on the property.
Noise	• Potential for an increase in noise levels.
Accessibility to Adjacent Properties	• Improvement in accessibility to properties along the VMP considering the road structure and intersections. • Potential impacts to property accesses/driveways.
Economic Environment	
Future Planning Initiatives and/or Potential Developments	• Impacts on potential developments or future planning initiatives of lands in the study area.
Cultural Environment	
Archaeological Resources	• Potential impacts on archaeological resources.
Built Heritage and Cultural Landscape Features	• Potential impacts on built heritage and cultural landscape features.
Engineering	
Integration of Contextual Sensitive Design Features (i.e. landscaping)	• Ability to add features to the VMP corridor which will enhance the surrounding environment.
Major Services/Utilities	• Potential impacts to major services or utilities (e.g. relocations) associated with the planning alternative.
Construction Costs	• Road construction costs.
Property Costs	• Cost of additional property to accommodate right-of-way elements.
Overall Summary	
Rationale for the recommendation to carry forward or eliminate alternatives from further consideration.	

VETERANS MEMORIAL PARKWAY

Interchange Class Environmental Assessment Study and Concurrent Application to Amend the Official Plan and Zoning By-Law

TYPICAL 4-LANE FREEWAY CROSS SECTION



NOTES
 1. SIDE CLEARANCE TO BE 3.00 m IF LENGTH OF STRUCTURE IS LESS THAN 50 m.



VETERANS MEMORIAL PARKWAY

Interchange Class Environmental Assessment Study and Concurrent Application
to Amend the Official Plan and Zoning By-Law

NEXT STEPS

- ❖ Incorporate input from PIC No.1 and establish the need/desire for a Focus Group Session.
- ❖ Based upon your interest, one or more Focus Group Sessions could be held prior to PIC No. 2 which is tentatively scheduled for September 2007. If you are interested in attending a Focus Group Session please sign up and we will contact you directly with further details.
- ❖ Prior to PIC No. 2, tentatively scheduled for September 2007, alternative design concepts for the existing road intersections with the VMP will be evaluated to identify the recommended design concept.

We encourage you to provide us with your comments and we thank you for participating in this PIC.

VETERANS MEMORIAL PARKWAY

Interchange Class Environmental Assessment Study and Concurrent Application
to Amend the Official Plan and Zoning By-Law

FOCUS GROUP SESSIONS

- ❖ A focus group involves encouraging an invited group of participants (6 to 8 people) to share their thoughts, feelings, attitudes and ideas on certain project related topics.
- ❖ A focus group is good for getting rich data in participants' own words and developing deeper insights for project issues.
- ❖ A focus group is lead by a moderator/facilitator who encourages a free-flowing discussion around the relevant issue (s) pertaining to the project.
- ❖ The moderator/facilitator will provide a summary of topics discussed, the issues raised, and potential resolutions to the issues.



London
CANADA



Giffels
An Ingenium Group Company