

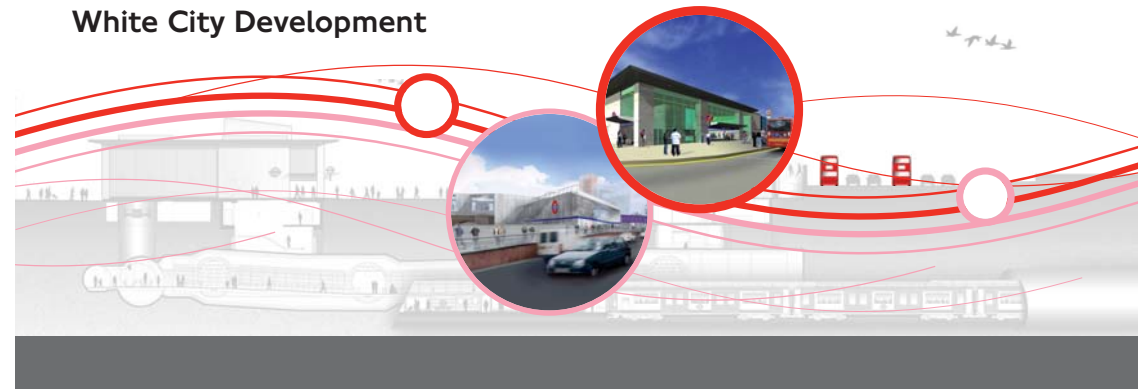
White City Development

The Shepherd's Bush and White City area is being transformed by numerous transport investments. The new Westfield London retail and leisure development, a partnership between Transport for London and developer Westfield, will attract millions more people to the area when it opens in late 2008.

Approximately 60 per cent of all visitors are expected to use public transport to Westfield London and new transport links have been designed to cater for the increase in demand.

All information correct at time of going to print – August 2007

White City Development



Website

tfl.gov.uk



24 hour travel information

020 7222 1234



Contents

What transport investments are underway?	1
Wood Lane station	2
New name for Shepherd's Bush Hammersmith & City line station	2
New bus station	3
White City station refurbishment	3
Map of area	4/5
Southern Interchange	6
Shepherd's Bush Central line station	7
Shepherd's Bush Overground station	8
Taxi and cycle routes	9

What transport investments are underway?

Multiple transport investment projects are being undertaken.

- A new Underground station, called Wood Lane, is being built on the Hammersmith & City line
- Shepherd's Bush Central line station is being remodelled with a new ticket hall
- A new bus station is being built
- A new Overground station, called Shepherd's Bush, is being built on the West London line
- A major new transport interchange is being built in the south east corner
- White City station on the Central line is undergoing improvement work

Additional improvements include:

- Shepherd's Bush station on the Hammersmith & City line will be renamed as Shepherd's Bush Market
- New cycle routes will be introduced around the development
- A taxi pick up and drop off point is being built

The new Westfield London development will comprise a shopping and leisure centre, a new library, provision for child care and for affordable housing.

For a map of the new area, please turn to the centre pages of this leaflet.

New Hammersmith & City line station – Wood Lane station

Wood Lane station will open at the same time as the Westfield London development. It will be located between the existing Shepherd's Bush and Latimer Road stations on the Hammersmith & City line at the junction of Wood Lane and Ariel Way and will be the north-east gateway into Westfield London's complex.

Wood Lane will be the first new station to be built on an existing London Underground line for more than 70 years. It will connect customers from central London with the new development, using the Hammersmith & City line. The state-of-the-art station has been designed to accommodate football match crowds and will benefit people who live and work in the area.

New name for Shepherd's Bush (Hammersmith & City line) station

We are renaming the Shepherd's Bush station on the Hammersmith & City line to Shepherd's Bush Market. This is to avoid confusion between it and the Central line station of the same name.

The station, which is opposite the Shepherd's Bush market, will create a new identity for the area and will be used by approximately 9,400 customers daily.

New bus station

A new bus station will be built and located in the north-west corner of the development in Ariel Way, which will run approximately a bus a minute in either direction through the Southern Interchange.

It is proposed to extend local bus routes 31, 49, 148, 207, 237, 260, 607 and C1. Services will run from their current terminus at Shepherd's Bush into the Southern Interchange and on to terminate at the new north-west bus station.

White City station refurbishment

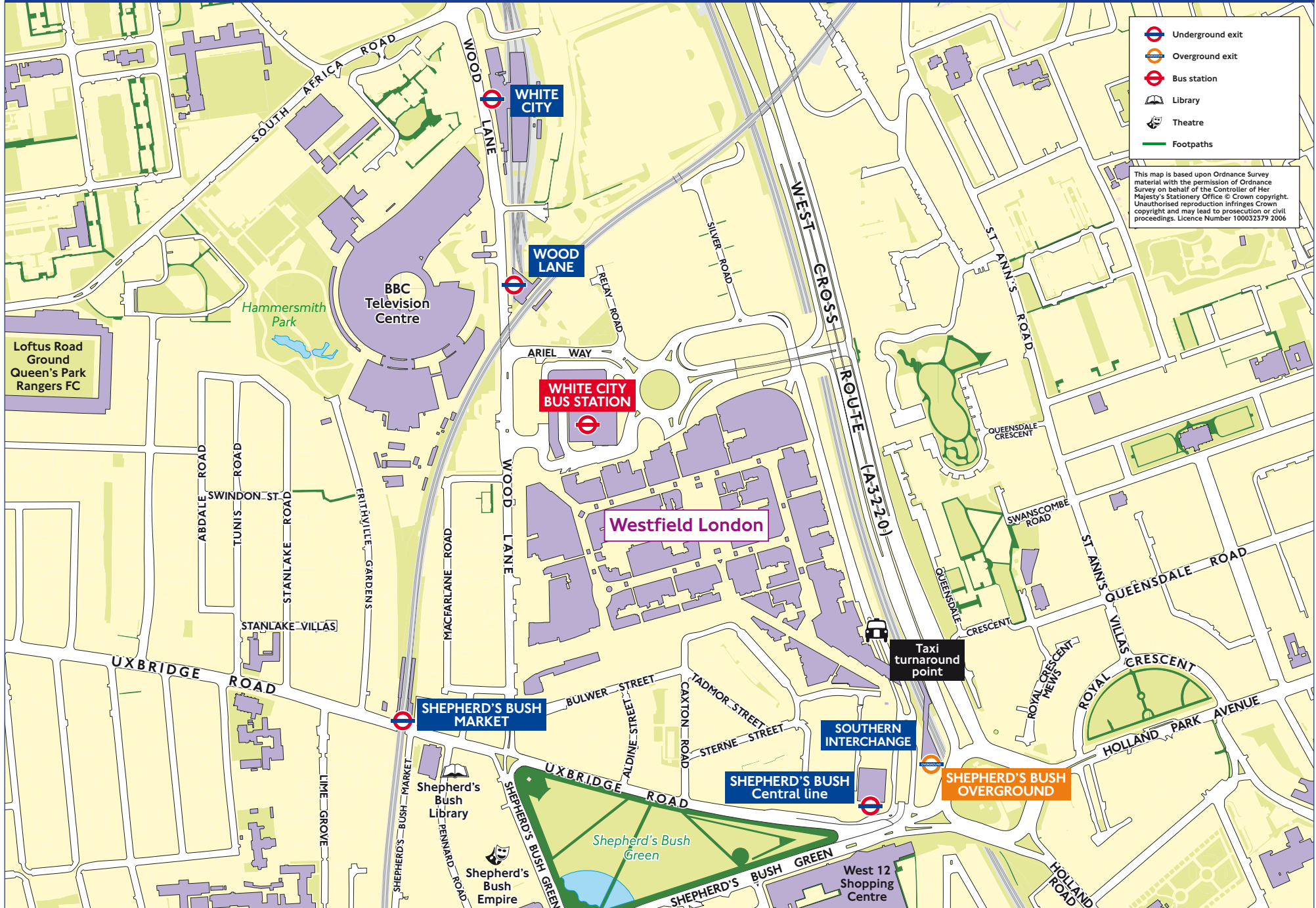
White City station on the Central line is currently undergoing enhanced refurbishment to upgrade its appearance and functionality whilst restoring the original features.

Work will include installing new CCTV cameras, information systems and Help points, an enhanced PA system, as well as tactile strips on platforms and stairs to help those with visual impairments. Improved lighting will also be installed to help improve customer safety and visibility.

This project is being undertaken by Metronet Rail.



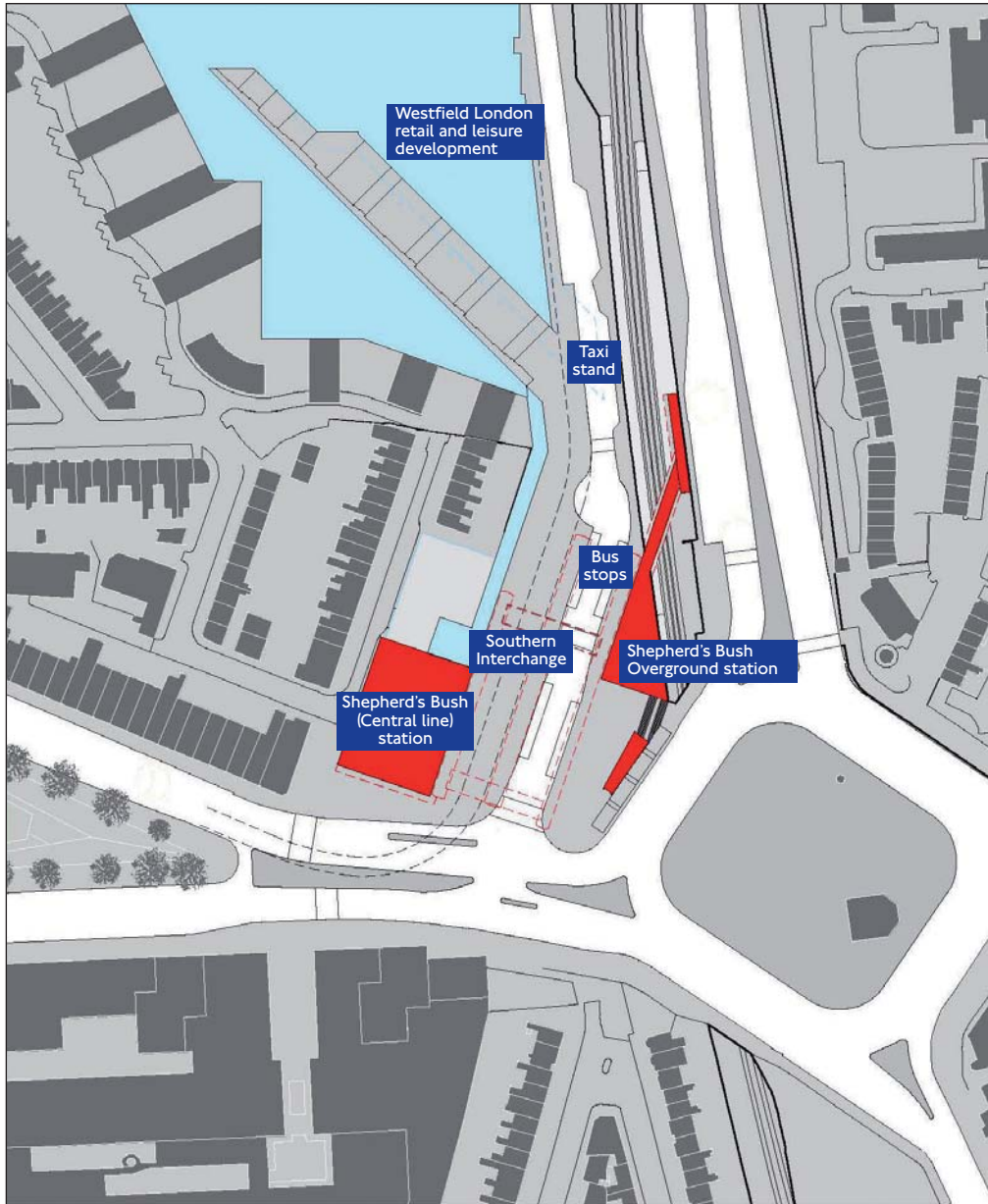
Planned transport links for the White City/Shepherd's Bush area



- Underground exit
- Overground exit
- Bus station
- Library
- Theatre
- Footpaths

This map is based upon Ordnance Survey material with the permission of Ordnance Survey on behalf of the Controller of Her Majesty's Stationery Office © Crown copyright. Unauthorised reproduction infringes Crown copyright and may lead to prosecution or civil proceedings. Licence Number 100032379 2006

Southern Interchange



The Southern Interchange will form the main entrance to Westfield London. This new modern transport hub to the south east of the development at Shepherd's Bush will offer several types of transport: tube, bus, train, taxi, as well as pedestrian and cycle routes.

Shepherd's Bush (Central line) station

Shepherd's Bush station on the Central line is undergoing a major upgrade. The ticket hall is being completely redeveloped and step-free access created through the installation of lifts. New passageways and staircases will increase the station's capacity.

In addition, the station will be modernised through upgraded security and information systems and new ceiling, wall and floor surfaces.

Customers will also benefit from the new double-height ticket hall, additional gates and better ticketing facilities.



The Central line station will provide the main access to Westfield London for customers travelling by Tube. By the time the shopping centre opens, 45,000 customers will use the station each day. Most of the work on the remodelled station, such as the ticket hall, will be finished to coincide with the opening of Westfield London. Some work, including the step-free access scheme, will be completed in 2009.

Shepherd's Bush Overground station

A new National Rail station has been constructed for West London line customers at Shepherd's Bush. The station, on the east side of the Southern Interchange, provides links to the Central line station, buses and taxis.

The station will be operated by Transport for London (TfL) as part of the London Overground network.

It is intended that the West London line peak frequency will be three trains per hour, whilst off peak services will initially remain at two trains per hour. Sunday services will be increased to two trains per hour all day at the end of 2008. TfL London Rail is also planning to extend the West London line services to four trains per hour from December 2010/January 2011, two of which would continue through Willesden Junction on the North London line.

From October 2008 TfL will run its new 3-car London Overground, Class 378 Suburban trains. TfL plans to extend them to 4-car train operation from 2010/2011.

Taxis and cycle routes

New cycle routes are planned around the Westfield London development, as well as new cycle parks, which will provide approximately 570 cycle spaces and be situated at the main entrances to the development. In addition, a cycle parking facility will also be available at the new Wood Lane station.

A taxi rank is planned in the heart of the Westfield London development, with a taxi drop-off area available to the north of the Southern Interchange.

**If you would like further information please visit the White City Development web page:
tfl.gov.uk/whitecity**

