

2010

ECONOMIC IMPACT ANALYSIS



Wright-Patterson
Air Force Base
Dayton, Ohio

PREFACE

Commander's Foreword

The 88th Air Base Wing (88 ABW) is the host unit for Wright-Patterson Air Force Base with more than 5,300 personnel assigned to the wing. All of our military, civilians and contractors play a key role in helping our tenant units achieve their mission objectives. This internal partnership enhances our strength on the base, and in Ohio's Miami Valley.



Whether we are providing vital infrastructure and services to operate the base or training and processing the 1,000 Airmen we deploy annually to all corners of the world, the 88 ABW is the cornerstone of the base's mission success. Our many mission partners – such as the Aeronautical Systems Center, Air Force Research Laboratory and Air Force Materiel Command Headquarters (AFMC) – provide critical advanced research, acquisition, intelligence and combat support, enabling the Air Force to fly, fight and win in the air, space, and cyberspace.

The 88 ABW also has the lead responsibility to liaise with the surrounding community. Numerous private and public organizations along with 20-plus cities, towns, and villages in the 16-county Miami-Valley region provide Wright-Patt outstanding community support. The Miami Valley shows its support in countless ways; among them, the special "Hometown Heroes" baseball games at the Dayton Dragon's Fifth Third Field, and welcoming home our Airmen at "Heroes-Welcoming-Heroes" events. As a good community partner, we return their support by hosting the annual AFMC "Freedom's Call TATTOO", a gratis night of entertainment, aircraft fly-overs, and the best fireworks display in southwest Ohio. We also host the United States Air Force Marathon every September to celebrate our service's birth, September 17, 1947. The 88 ABW hosts many other events throughout the year that reach out to our wonderful community neighbors.

In addition to being a community partner, Wright-Patterson is an economic powerhouse for Ohio. In 2010, the installation hired more than 1,600 people and we're still going. This year we have completed our largest military construction project since World War II, in order to accommodate new missions brought to the installation through the Base Realignment and Closure Act of 2005. Related to the new organizations and missions, we expect to welcome approximately 1,300 new personnel to Wright-Patterson. We are continuing to reach into the community and provide information on how to become a part of our Air Force team. The future is bright for Wright-Patterson AFB and the Miami Valley as we continue to build pools of talented people to be the next generation of Wright-Patterson and community leaders!

Amanda W. Gladney
 AMANDA W. GLADNEY, Colonel, USAF
 Commander, 88th Air Base Wing

Wright-Patterson's Heritage

Wright-Patterson AFB near Dayton, Ohio, traces its origin directly from the Wright brothers' pioneering flights in 1904 and 1905 at the Huffman Prairie Flying Field located in the middle of the installation. Its past, present and future are all inextricably linked with the Wright brothers' legacy. Dayton was the Wright brothers' home and Daytonians consider their city the "Birthplace of Aviation". The Wrights' early years, their bicycle shops, their printing business, and their early aviation efforts are evident throughout the greater Dayton area. Just off the end of Wright-Patterson's active runway, a replica of the Wright brothers' 1905 hangar overlooks the Huffman Prairie Flying Field. Here they established their first flying field, developed the first practical airplane, and in their own words, "really learned to fly". The Flying Field has been designated a National Historic Landmark and is part of the Dayton Aviation Heritage National Historical Park.

The installation itself has been a leader in military aviation since World War I. Aviation research and development began to flourish at Wright-Patterson when the U.S. entered World War I. Wilbur Wright Field was established in the summer of 1917 as a pilot training school at the site of Wright-Patterson's present flight line. In the fall of 1917, McCook Field was established as an Air Service engineering center. McCook Field was located near downtown Dayton at what is now the intersection of State Route 4 and Interstate 75. In 1927, a new aerodrome and research complex were constructed on land donated by the citizens of Dayton to replace the overcrowded McCook Field. Named Wright Field in honor of both brothers, it is now part of Area B.

Wright-Patterson's logistics heritage also dates from World War I. The Fairfield Aviation General Supply Depot was established in 1917 adjacent to Wilbur Wright Field. The Fairfield Air Depot, as it became known, was a major Army Air Corps depot through the end of World War II. In 1931, the area encompassing the Fairfield Air Depot, Wilbur Wright Field, and the Huffman Prairie Flying Field, was renamed Patterson Field in honor of Lt. Frank Stuart Patterson who died in 1918 when his DH-4 crashed on the airfield during a flight test.

In 1948, Wright and Patterson Fields merged to create Wright-Patterson AFB. The 88th Air Base Wing (88 ABW) has been the host organization most of the period since the merger. It also provides base operating support for the installation.

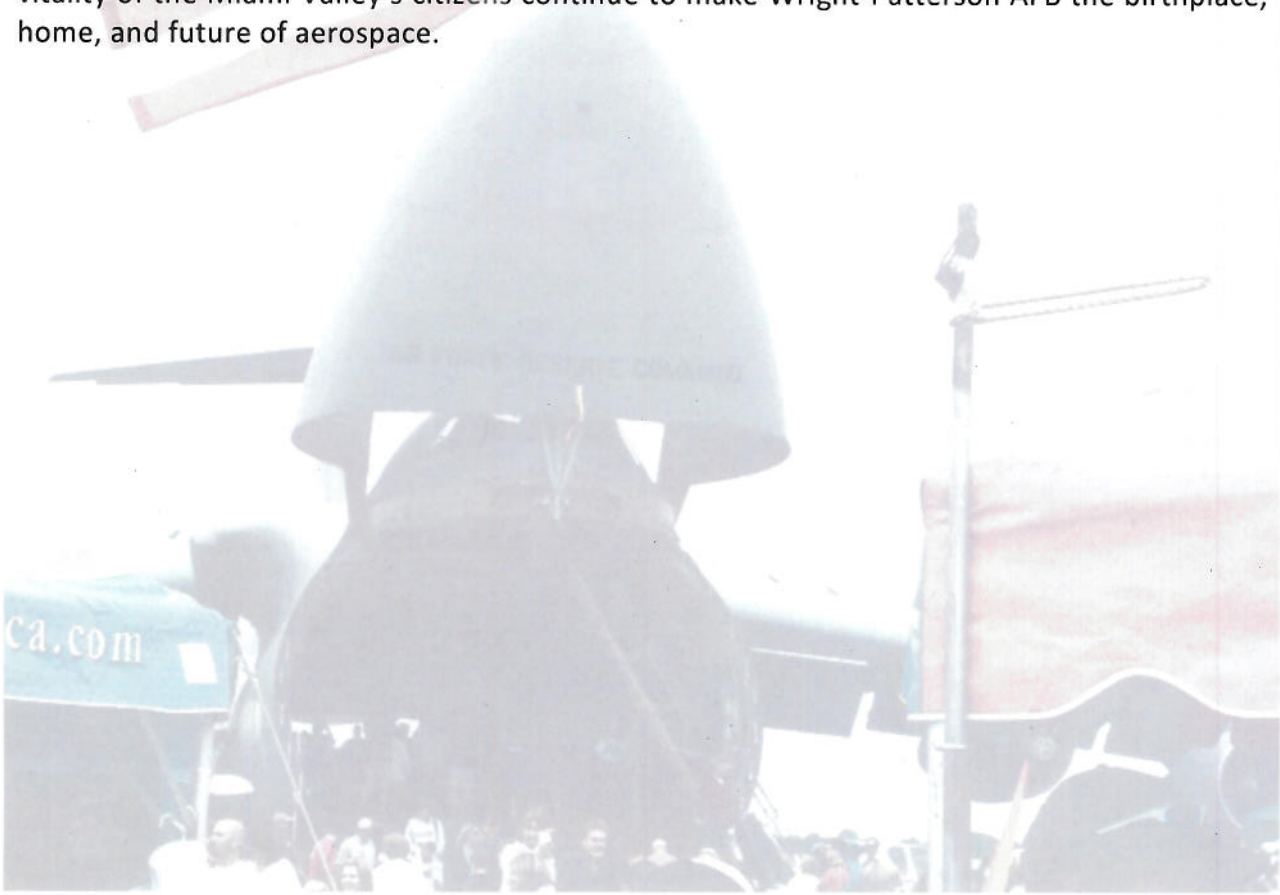
Wright-Patterson is one of the largest, most diverse, and organizationally complex bases in the Air Force. Its missions range from acquisition and logistics management, to research and development, education, flight operations, and an assortment of other defense and non-defense activities. Wright-Patterson is home to the Air Force Materiel Command (AFMC), the Aeronautical Systems Center (ASC), the Air Force Research Laboratory (AFRL), the Air Force Security Assistance Center (AFSAC), the Air Force Institute of Technology (AFIT), the National Air and Space Intelligence Center (NASIC), the National Museum of the United States Air Force

(NMUSAF), the 445 Airlift Wing (AW), a regional DoD medical center, and numerous other Air Force, DoD, and government agencies. Bringing it all together is the 88th ABW, which operates, maintains and defends the installation.

Today, as in the first century of flight, the nation's aeronautical weapon systems are conceived, tested, modified, and acquired at Wright-Patterson AFB. The installation's legendary heritage spurs modern aerospace scientists and logisticians in their quest to keep man flying higher, faster, farther, and safer than ever before. The installation also serves as an aerial port of embarkation and plays a continuing role in Overseas Contingency Operations, to include OPERATION ENDURING FREEDOM, NOBLE EAGLE, and OPERATION IRAQI FREEDOM.

The excellent community spirit and cooperation of the installation and its personnel is another hallmark of Wright-Patterson's heritage. Base personnel contribute hundreds of volunteer hours to community projects. They support the annual Vectren Dayton Air Show, offer special events at the NMUSAF, host the Air Force Marathon, conduct education outreach programs, and work with the Dayton Aviation Heritage National Historical Park to enhance the Miami Valley's legacy as the Birthplace of Aviation.

The creativity and professionalism of our Airmen and civilian employees combined with the vitality of the Miami Valley's citizens continue to make Wright-Patterson AFB the birthplace, home, and future of aerospace.



ECONOMIC IMPACT TABLES

Table 1

Personnel by Classification and Housing Location

CLASSIFICATION	LIVING ON BASE	LIVING OFF BASE	TOTAL
1. APPROPRIATED FUND MILITARY			
Active Duty	476	6,692	7,168
Air Force	401	6,676	7,077
Army	48	0	48
Navy	6	0	6
AF Reserves	14	0	14
Marine Forces	7	16	23
International Military	13	0	13
Non-Extended Active Duty ANG/Reserve	0	2,312	2,312
TOTAL:	489	9,004	9,493
2. ACTIVE DUTY MILITARY DEPENDENTS			
TOTAL:	2,350	22,510	24,860
3. APPROPRIATED FUND CIVILIANS			
General Schedule (GS) and General Government (GG)			9,454
National Security Personnel System (NSPS)			115
Federal Wage Board			541
Other (SES, Scientific and Professional Positions)			1,525
TOTAL:			11,635
4. NON-APPROPRIATED FUND, CONTRACT CIVILIANS AND PRIVATE BUSINESS			
Civilian Non Appropriated Fund (NAF)			685
Civilian AAFES Base Exchange (BX)			230
Contract Civilians (not included elsewhere)			5,251
Private Businesses On Base, By Type:			84
Branch Banks/Credit Union			21
Office Runway (Cincinnati Association for the Blind)			9
Hope Hotel			50
National Aviation Hall of Fame			4
TOTAL:			6,250
TOTAL ASSIGNED PERSONNEL:			27,378
TOTAL PERSONNEL INCLUDING DEPENDENTS:			52,238

Table 2
Annual Payroll by Classification and Housing Location

CLASSIFICATION	LIVING ON BASE (\$)	LIVING OFF BASE (\$)	TOTAL (\$)
1. APPROPRIATED FUND MILITARY (APFM)			
Active Duty	\$ 24,669,193	\$ 496,281,176	\$ 520,950,369
Air Force	\$ 18,669,193	\$ 495,001,176	\$ 513,670,369
Army	\$ 3,840,000	\$ -	\$ 3,840,000
Navy	\$ 480,000	\$ -	\$ 480,000
AF Reserve	\$ 1,120,000	\$ -	\$ 1,120,000
Marine Forces	\$ 560,000	\$ 1,280,000	\$ 1,840,000
International Military	\$ 1,040,000	\$ -	\$ 1,040,000
Non-Extended Active Duty ANG/Reserve	\$ -	\$ 35,287,108	\$ 35,287,108
TOTAL:	\$ 25,709,193	\$ 531,568,284	\$ 557,277,477
2. APPROPRIATED FUND CIVILIANS			
General Schedule (GS) and General Government (GG)			\$ 760,878,113
National Security Personnel System (NSPS)			\$ 9,398,787
Federal Wage Board			\$ 29,704,985
Other (SES, Scientific and Professional Positions)			\$ 177,245,076
TOTAL:			\$ 977,226,961
3. NON-APPROPRIATED FUND, CONTRACT CIVILIANS AND PRIVATE BUSINESS			
Civilian Non Appropriated Fund (NAF)			\$ 15,892,857
Civilian AAFES Base Exchange (BX)			\$ 5,079,724
Contract Civilians (not included elsewhere)			\$ 581,167,235
Private Businesses On Base, By Type:			\$ 1,911,917
Branch Banks/Credit Union			\$ 670,471
Office Runway (Cincinnati Association for the Blind)			\$ 304,294
Hope Hotel			\$ 800,000
National Aviation Hall of Fame			\$ 137,152
TOTAL:			\$ 604,051,733
TOTAL ANNUAL PAYROLL:			\$ 2,138,556,171

Table 3
Expenditures for Construction, Services, and Procurement of Materials, Equipment, and Supplies

CLASSIFICATION	ACTUAL ANNUAL EXPENDITURES
1. CONSTRUCTION	
Military Construction Program	\$ 258,100,562
Non-Appropriated Fund (NAF)	\$ 1,135,333
Military Family Housing (MFH)	\$ 2,302,521
O&M USER	\$ 43,910,645
O&M , SRM, SRMC	\$ 32,818,196
American Recovery & Reinvestment Act (ARRA)	\$ 2,853,617
TOTAL:	\$ 341,120,874
2. SERVICES	
Services Contracts	\$ 342,297,680
Supply Contracts	\$ 44,325,985
RDT&E Contracts	\$ 210,107,457
Other Services (not included elsewhere)	\$ 49,685,999
TOTAL:	\$ 646,417,121
3. MATERIALS, EQUIPMENT, AND SUPPLIES PROCUREMENT	
Commissary	\$ 598,162
Base Exchange (BX)	\$ 550,000
Health (Tri-Care, Government cost only)	\$ 34,448,072
Education (Impact aid and tuition assistance)	\$ 5,655,323
TDY (Military and civilian)	\$ 10,666,869
GPC/Other Materials, Equipment & Supplies (not elsewhere included)	\$ 63,400,000
TOTAL:	\$ 115,318,426
TOTAL ANNUAL EXPENDITURES: \$ 1,102,856,421	

Table 4
Estimate of Number and Dollar Value of Indirect Jobs Created

TYPE OF PERSONNEL	NUMBER OF BASE JOBS	MULTIPLIER	NUMBER OF INDIRECT JOBS
Active Duty Military	7,168	0.41	2,939
Reserve/ANG	2,325	0.41	953
APF Civilians	11,635	1.57	18,267
Other Civilians	6,250	1.57	9,813
TOTAL:	27,378		31,972

ESTIMATED NUMBER OF INDIRECT JOBS CREATED: 31,972

AVERAGE ANNUAL PAY FOR THE LOCAL COMMUNITY: \$39,840

ESTIMATED ANNUAL DOLLAR VALUE OF JOBS CREATED: \$1,273,764,480

DATA SOURCES:

Multiplier: LMI Economic Impact Database, Installations and Indirect/Induced Job Multipliers, Feb 95

Avg Annual Pay: Current tables for Average Annual Pay Levels in Metropolitan Areas and Average Annual Pay by city/state are accessible at: www.bls.gov/oes/current/oes_23020.htm#b00-0000

Table 5
Total Annual Economic Impact Statement

ANNUAL PAYROLL:	\$ 2,138,556,171
Military	\$ 557,277,477
Federal Civilian	\$ 977,226,961
Other Civilian	\$ 604,051,733

ANNUAL EXPENDITURES:	\$ 1,102,856,421
-----------------------------	------------------

ESTIMATED ANNUAL DOLLAR VALUE OF JOBS CREATED:	\$ 1,273,764,480
Estimated Indirect Jobs Created	31,972
Average Annual Pay	\$39,840

TOTAL ECONOMIC IMPACT: \$ 4,515,177,072

APPENDICES

Analysis Methodology

The objective of this Economic Impact Analysis is to quantify Wright-Patterson AFB's local economic activity within fiscal year 2010 (FY10). FY10 covers the time period of October 1, 2009 – September 30, 2010. The local area is defined by the U.S Office of Management and Budget and is called a Metropolitan Statistical Area (MSA). The definition of Wright-Patterson AFB's MSA has varied throughout past analyses, but remained the same between FY07 and FY10. The MSA consists of five surrounding counties: Clark, Greene, Miami, Montgomery and Preble. The MSA is illustrated in Figure 1 below.

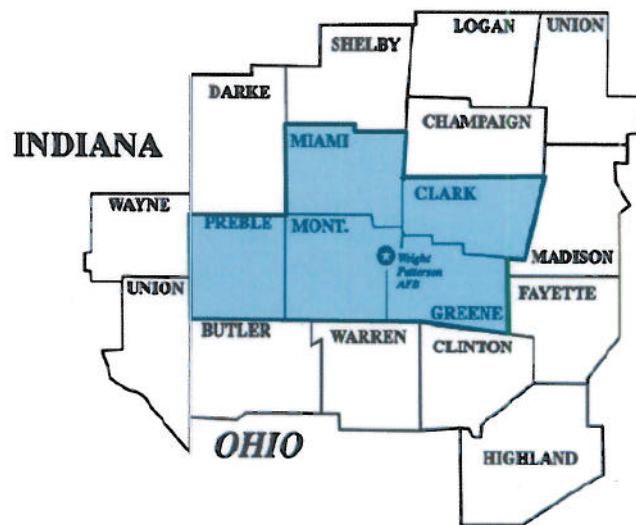


Figure 1: Economic Area for Wright-Patterson AFB

Table 1: Personnel by Classification and Housing Location

The headcount of military personnel was derived from an Economic Resource Impact Statement (ERIS) from the Defense Joint Military Pay System (DJMS) report furnished by the 88 CPTS. The Air National Guard and Reserve numbers were collected from the 445 AW. The number of military personnel and dependents living on base was provided by the 88 ABW Civil Engineering Office for Housing (88 ABW/CEH). The number of Air Force off base dependents was provided by the Base Military Personnel Flight (MPF). The numbers of dependents for the other branches of services were calculated based upon an average ratio of active duty personnel to dependents. Civilian headcount was collected from the Civilian Personnel Flight (88 FSS/FSMC) and various tenant organizations. Contract civilian headcount was derived from the 88 FSS/FSMM Tenant Report.

Table 2: Annual Payroll by Classification and Housing Location

The payroll of military personnel was derived from the ERIS report furnished by the 88 CPTS. The Air National Guard and Reserve payroll was collected from the 445 AW. The majority of the appropriated fund civilian input was provided by the 88 FSS/FSMM office. The payroll for civilian contractors was calculated by multiplying the headcount from the 88 FSS/FSMM Tenant Report by an average contractor cost derived from various Wright-Patterson AFB service contracts.

Table 3: Expenditures for Construction, Services, and Procurement

Military construction spending was collected from the 88 ABW/CE, US Army Corp of Engineers (USACoE) and various tenant organizations. The 88 ABW/CE office and the 445 AW were the only base organizations with either NAF or MFH spending in FY10. Several organizations provided FY10 totals for O&M Construction spending. Other construction expenditures were provided by ASC/PKO, USACoE and Government Accountability Office (GAO). The amount for Service Contracts was calculated from the ASC/PKO, 445 AW, and several tenant organizations. The amount for Supply Contracts was provided by ASC/PKO. RDT&E data was provided by AFRL/PK. Other Services contracts consists of input from the Defense Automation and Production Service (DAPS), GAO, Dayton Heritage and Defense Logistics Agency (DLA) Transportation Services. Education spending was a combination of the Education and Training Flight and Federal Government Impact Aid. Data for the GPC and other spending came from the ASC/PKO.

Table 4: Estimate of Number and Dollar Value of Indirect Jobs Created

The multipliers in this table were taken from the Economic Impact Database owned by the Logistics Management Institute. The average annual pay was taken from the Bureau of Labor and Statistics website. This methodology is required according to Chapter 4 of AFMAN 65-506.

Table 5: Total Annual Economic Impact Estimate

This table is simply a summary of Tables 1 – 4. Wright-Patterson AFB's total economic impact upon the Dayton MSA is \$4,515,177,072.

Summary

This Economic Impact Analysis was prepared by the 88 CPTS/FMA, Wright-Patterson AFB, Ohio. Questions or comments concerning the statistics or data contained in this analysis may be addressed to Mr. Ken Charles, (937-522-2537, kenneth.charles@wpafb.af.mil).

Summary of Capital Assets

CAPITAL ASSETS <i>(As of: 30 September 2010)</i>		
Building Category	Square Feet	
Housing (Includes detached garages and storage buildings)	276,895	
Community (Includes commissary, BX, BAQ, VAQ/VOQ, and recreation)	2,445,907	
Research and Development	5,102,613	
Hospital	825,533	
All Other Buildings (Includes Operations & Training, Supply, Maintenance & Production, and Administration)	6,815,563	
Other Structures and Facilities	976,336	
Utilities and Ground Improvement	243,353	
TOTAL:	16,686,200	
Dormitory/Temporary Quarters	Number of Units	Bed Capacity
Airman/NCO	5	450
Visiting Officer/Airman Quarters	8	441
Temporary Lodging Facilities	46	132
Compassionate Care Facilities	16	26
TOTAL:	75	1,049
Land	Acres	
Fee Owned	7,629	
Easements	431	
Right of Way	83	
Leased	2	
TOTAL:	8,145	
Runways	Linear Feet	
Area A	7,000	
Area B (inactive)	7,147	
Area C	12,600	
TOTAL:	26,747	
Facilities Data	Number of Buildings	
Buildings	471	
Family Housing	128	
TOTAL:	599	

Figure 2: Wright-Patterson AFB's Capital Assets

Personnel Distribution

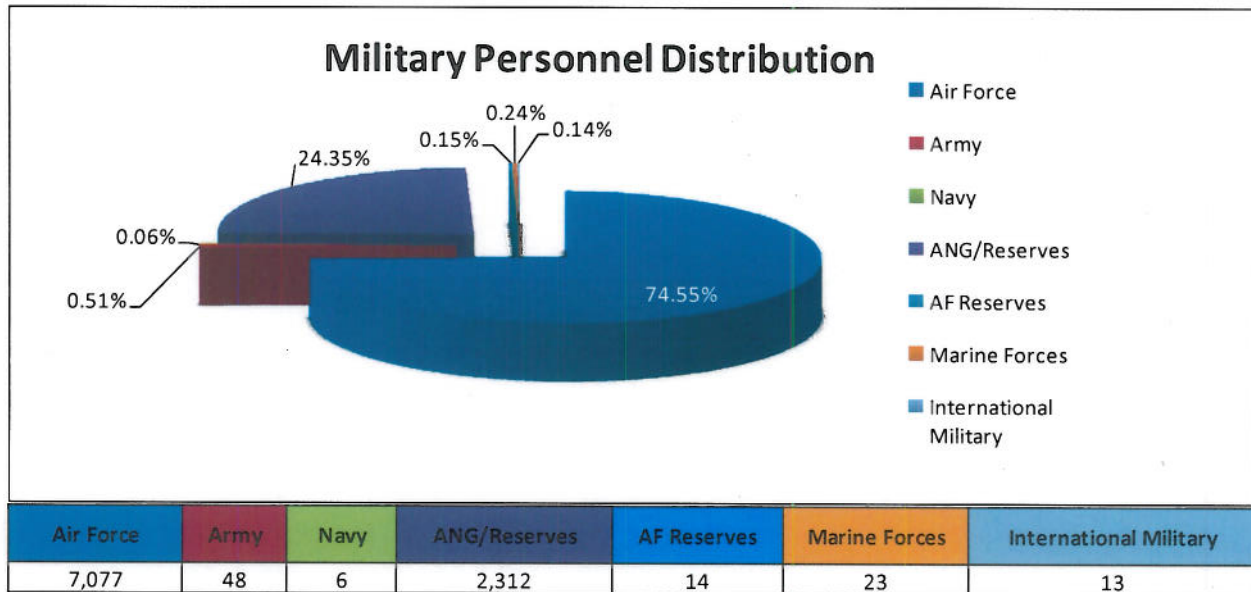


Figure 3: Distribution of Military Personnel by Branch of Service

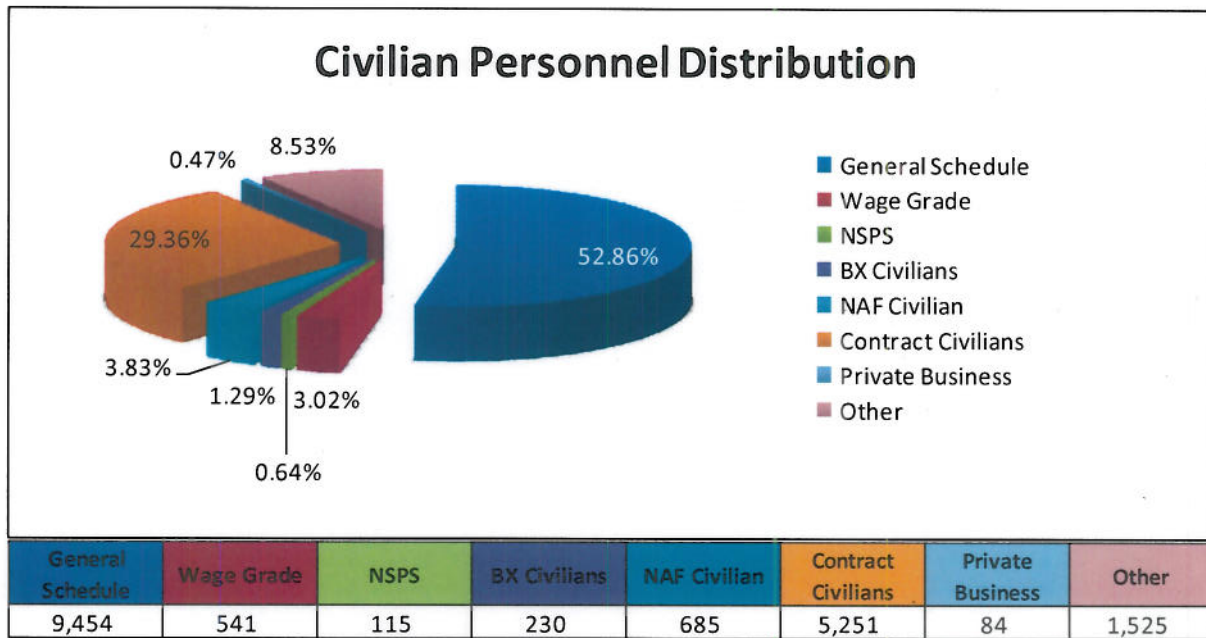


Figure 4: Distribution of Civilians by Personnel System

Military & Civilian Payroll and Assignment Trends

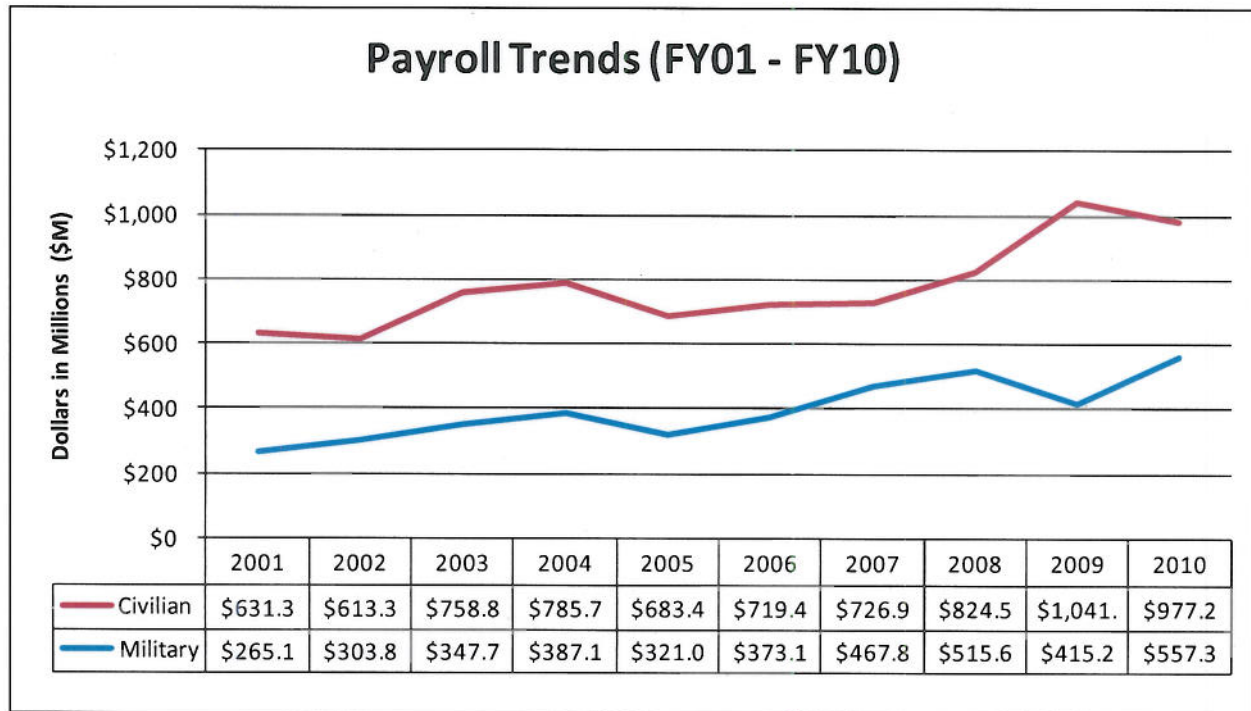


Figure 5: Total Military & Civilian Annual Payroll

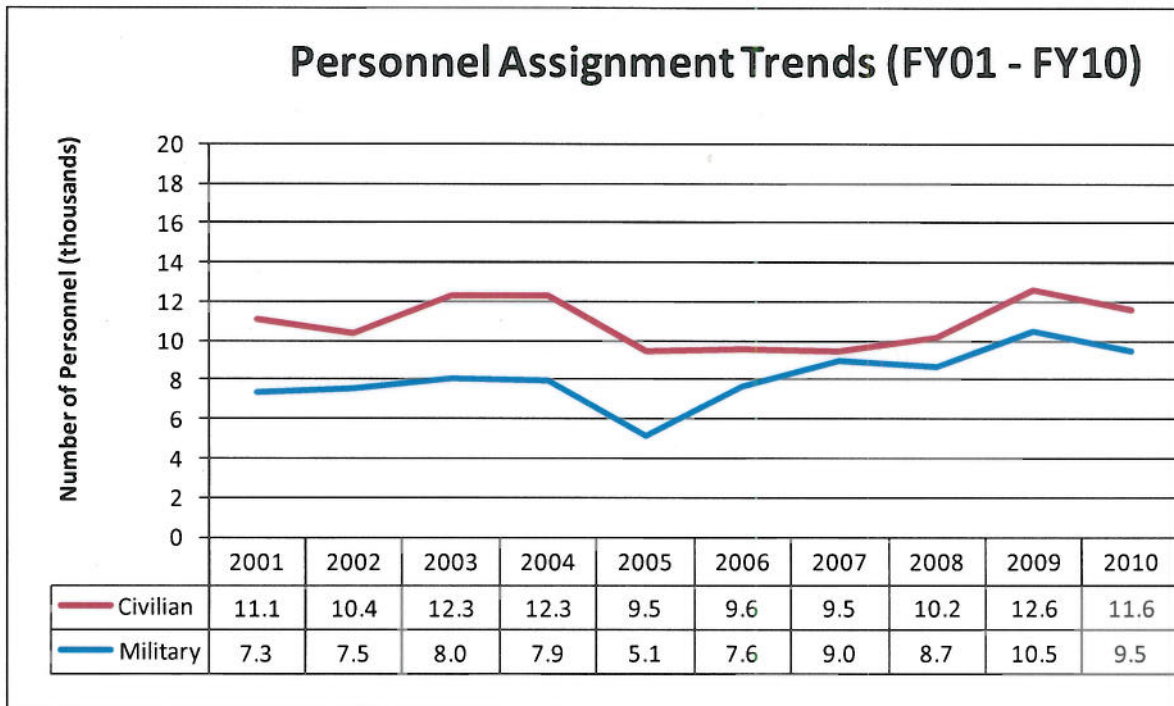


Figure 6: Total Military & Civilian Personnel Assigned

Military Retiree Payments

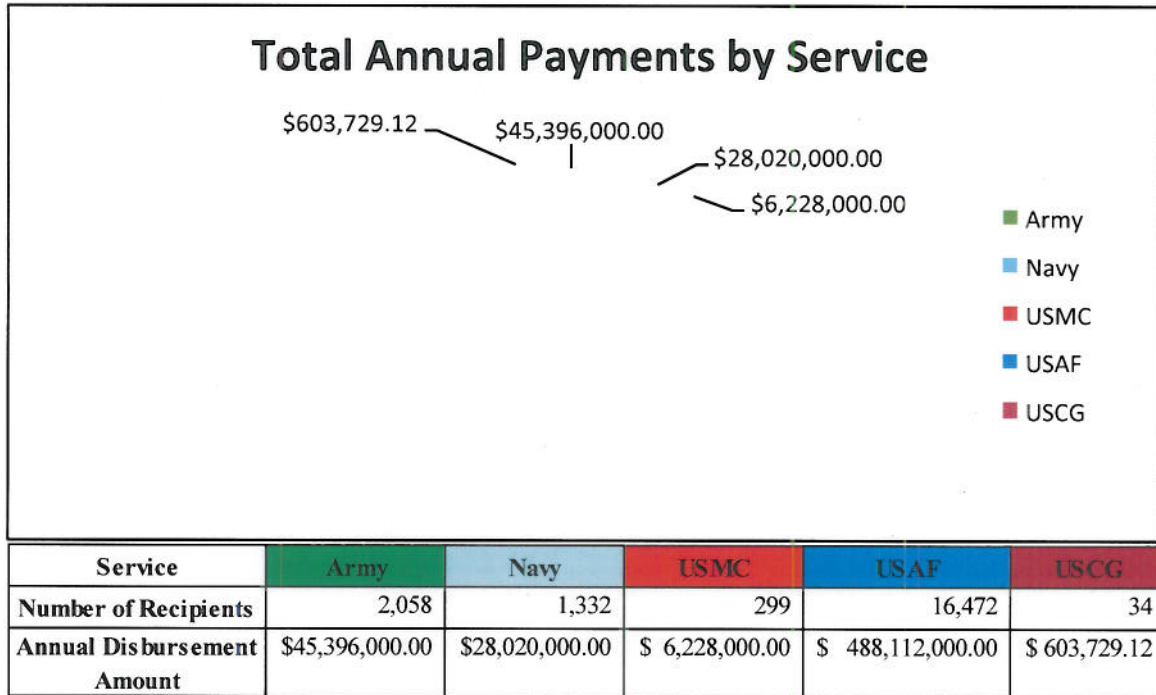


Figure 7: Total Military Retiree Payments by Branch of Service

Combined Federal Campaign Contributions

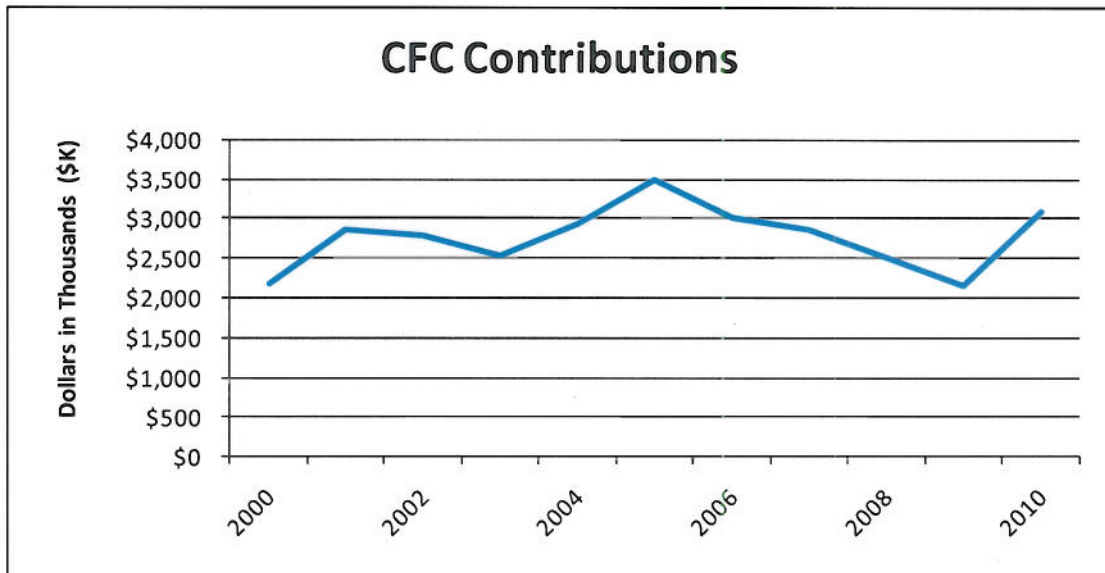


Figure 8: Total CFC Contributions from Wright-Patterson AFB

Summary of Impact Aid Payments

IMPACT AID SUMMARY		
School District	County	Amount
Mad River Local	Montgomery	\$ 815,485
Fairborn City	Greene	\$ 301,614
Beavercreek Local	Greene	\$ 426,385
TOTAL Impact Aid		\$ 1,543,484

Figure 9: Summary of Dayton, OH Impact Aid Payments

NMUSAF Visitation Trends

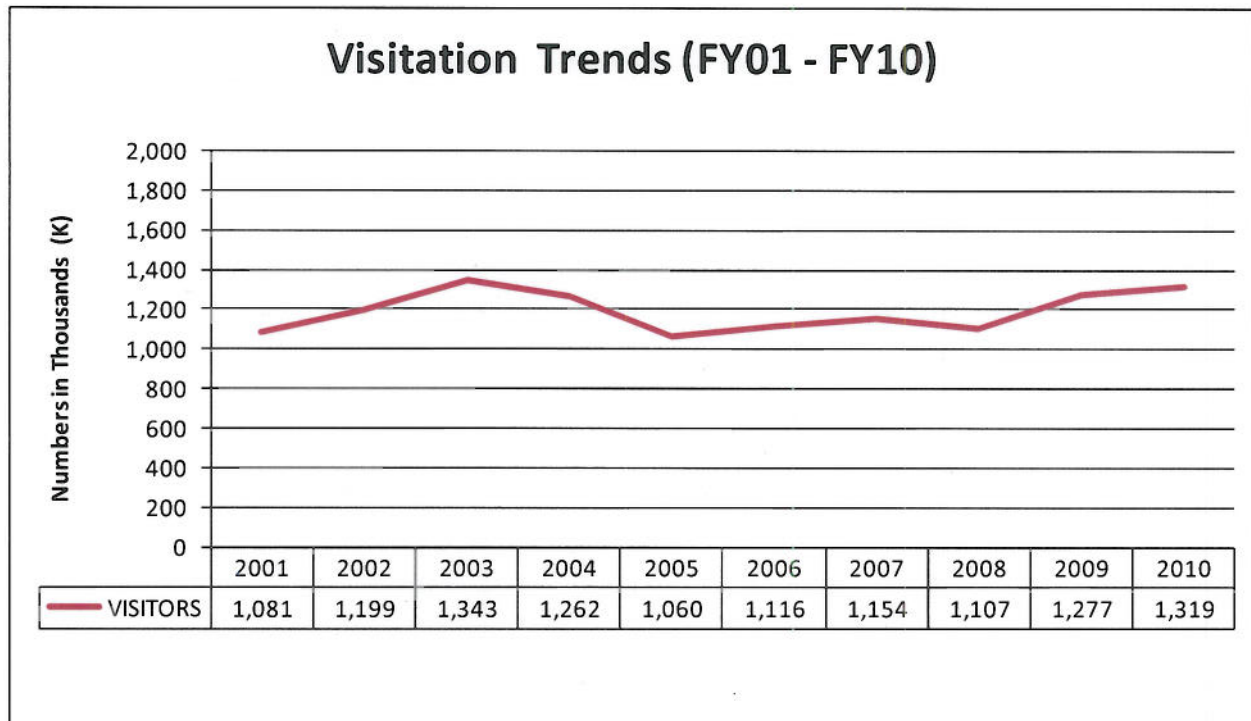


Figure 10: Summary of National Museum of the U.S. Air Force Visitation

THIS PAGE WAS INTENTIONALLY LEFT BLANK

Wright-Patterson
Air Force Base
Dayton, Ohio