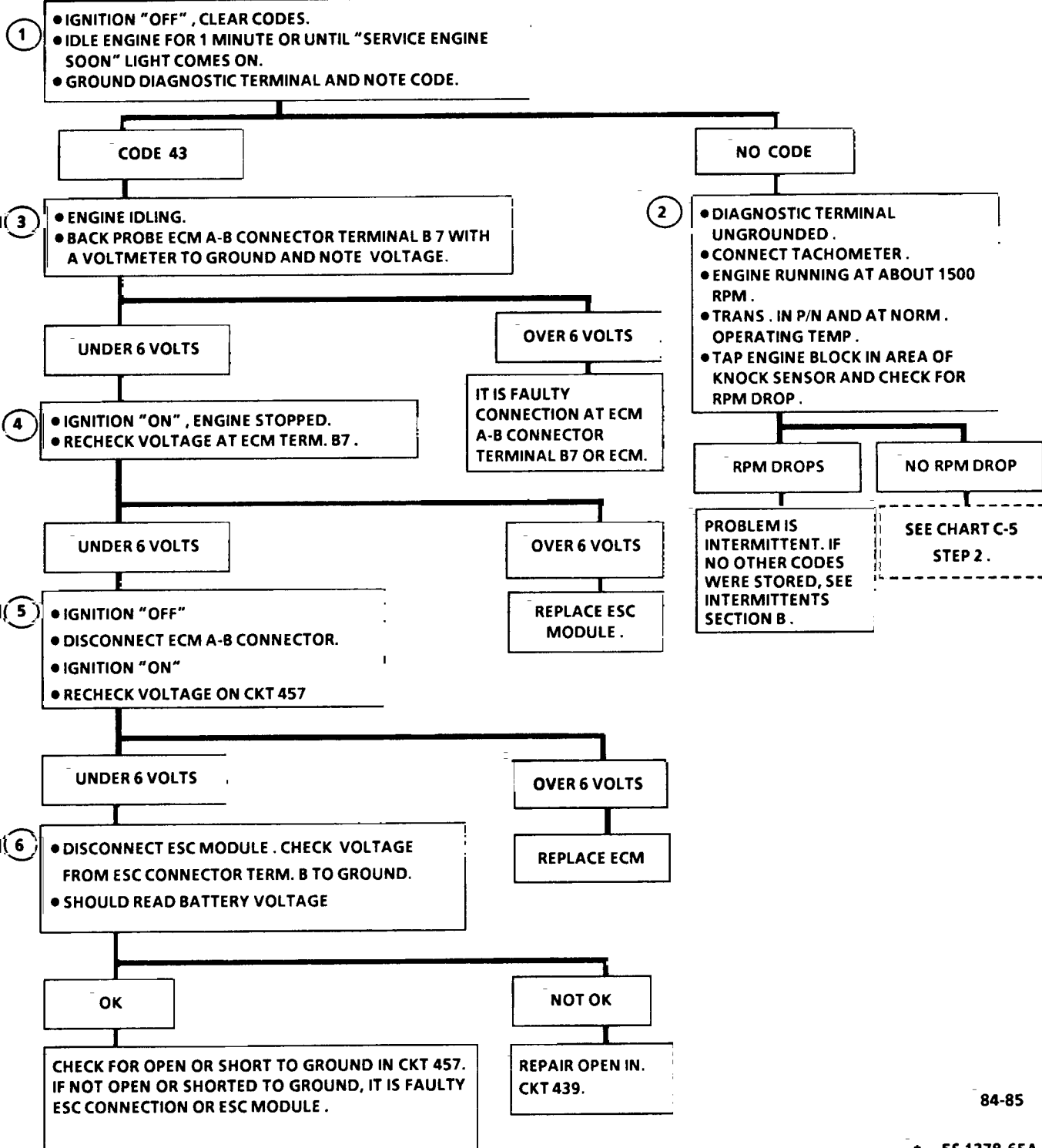


## Revised 12-85

# CODE 43

## ELECTRONIC SPARK CONTROL (ESC)

### 5.7L "Y" SERIES FUEL INJECTION (PORT)



CLEAR CODES AND CONFIRM "CLOSED LOOP" OPERATION AND NO "SERVICE ENGINE SOON" LIGHT.

84-85

\* 55 1378-6EA

9-17-85