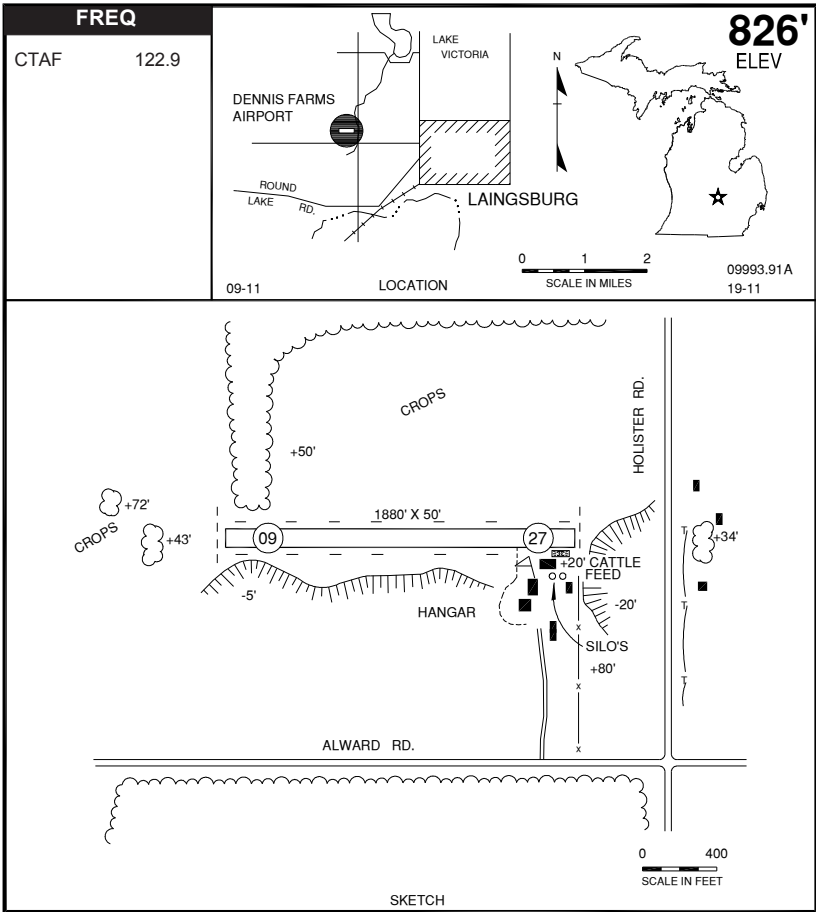


LAINGSBURG, DENNIS FARMS (15W)



RWY LENGTH BEYOND DISPLACED THR

09/ —
 27/ —

COORDINATES

42° 53.69'N
 084° 23.38'W

License

Basic Utility

FM CITY: 1.25 mi WNW

LGT: None

MGR: Kevin Cozik

PH: 517-749-7196

FBO: None

ATND: Intmt-Mgr resides at arpt.

NAV AIDS: 110.8 (LAN) 055° 18.0 NM to fld.

FUEL: None

RPR: None

WX: None

SNW RMVL: Ireg, vfy cond

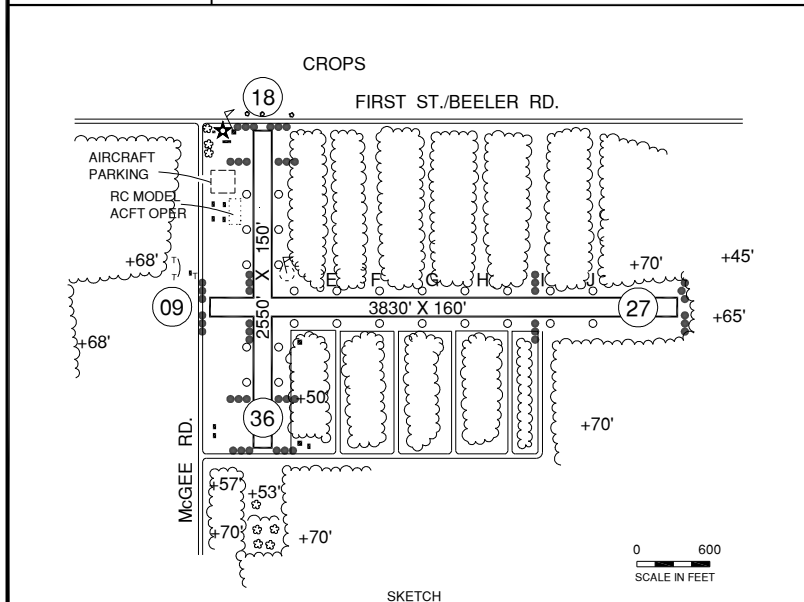
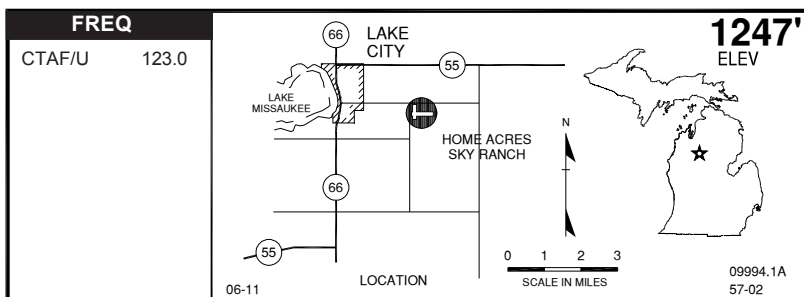
TRNSP: None

MEALS: In town, 2.0 mi

RON: None

- Rwy moderately rolling terrain—mkd ireg w/ 2 ft yellow cones.
- Deer on & invof arpt.

LAKE CITY, HOME ACRES SKY RANCH (Y91)



RWY LENGTH BEYOND DISPLACED THR

09/ 3454' * 18/ 2293'
 27/ 2666' * 36/ 2154'

COORDINATES

44° 19.22'N
 085° 10.27'W

License
 Basic Utility

FM CITY: 2.0 mi E

LGT: ROTG BCN, NON-STD LIRL— key mike
 3X CTAF.

MGR: Don Kohler
 Rick Ives, Asst

PH: 248-496-7132 (cell)
 248-524-2355 (Owner)
 586-801-3007 (Asst mgr)

FBO: None

ATND: Ireg

NAV AIDS: 111.6 (HTL) 268° 22.0 NM to fld.

FUEL: None

RPR: None

WX: None

SNW RMVL: No

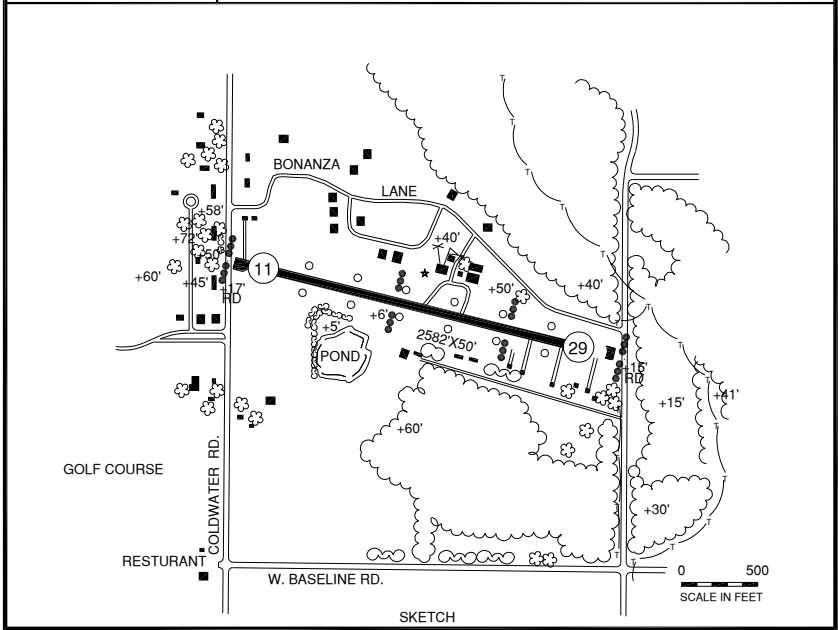
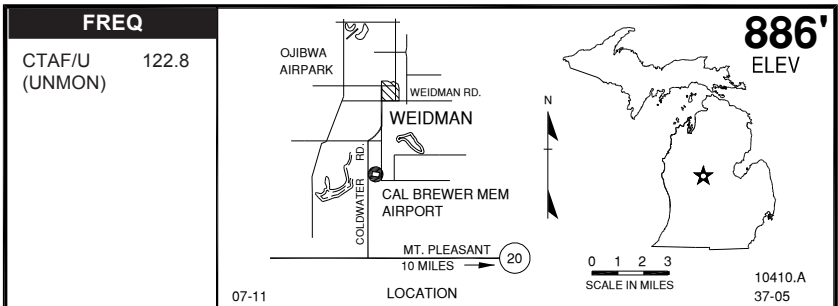
TRNSP: None

MEALS: In town, 2.0 mi

RON: In town, 2.0 mi

- TPA 2047' MSL (800' AGL).
- Birds & deer on & in/ov arpt.
- Admin bldg access—depress V, then simultaneous III-II, then I.
- Tall trees block view of rwy intersection.
- RDO ctl acct oper NW corner of arpt.
- Unicom unmonitored.

LAKE ISABELLA, CAL BREWER MEM (D15)



RWY LENGTH BEYOND DISPLACED THR

11/ 1493'
29/ 1865'

COORDINATES

43° 38.67'N
084° 58.92'W

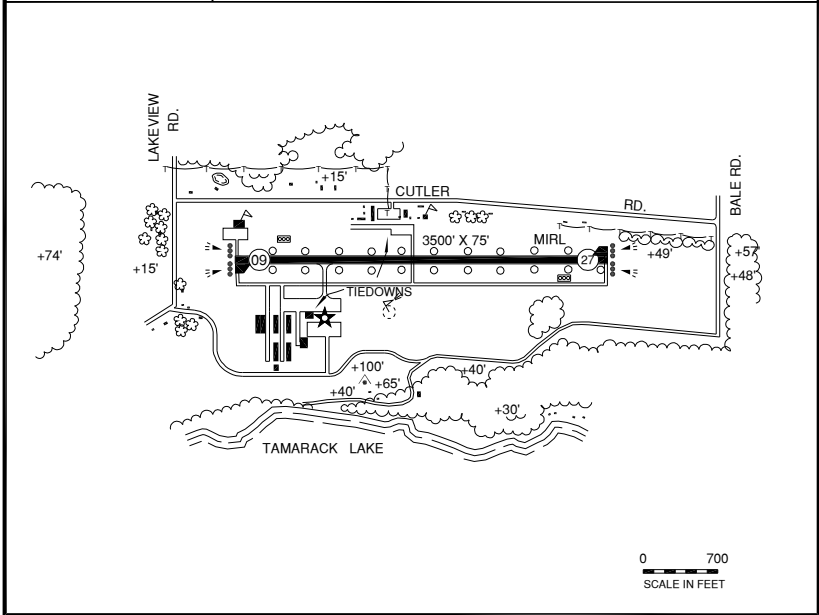
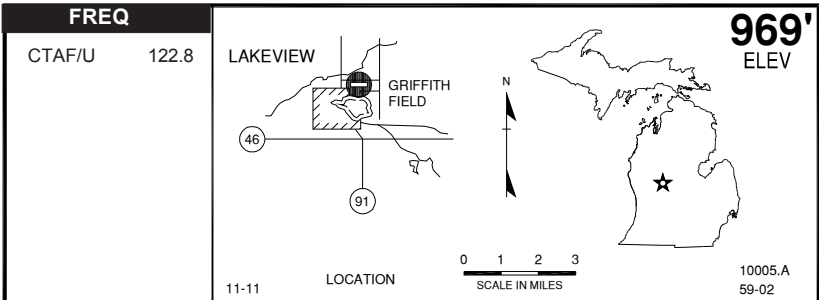
License
Basic Utility

FM CITY: 1.0 MI S
LGT: NSTD LIRL – CTAF
MGR: Tom Couser
PH: 989-644-2504
989-644-8654 (Village ofc)
FBO: None
ATND: Unatnd

NAV AIDS: 110.6 (MOP) 276° 12.0 NM to fld.
FUEL: None
RPR: None
WX: None
SNW RMVL: Ireg-vfy cond 989-644-8654 or 898-644-2504
TRNSP: None
MEALS: 0.25 MI
RON: Mt Pleasant - 14.0 mi

● Lake Isabella recreational area and public golf course adj.

LAKEVIEW - GRIFFITH FIELD (13C)



RWY LENGTH BEYOND DISPLACED THR
 09/ —
 27/ —

COORDINATES
 43° 27.13'N
 085° 15.89'W

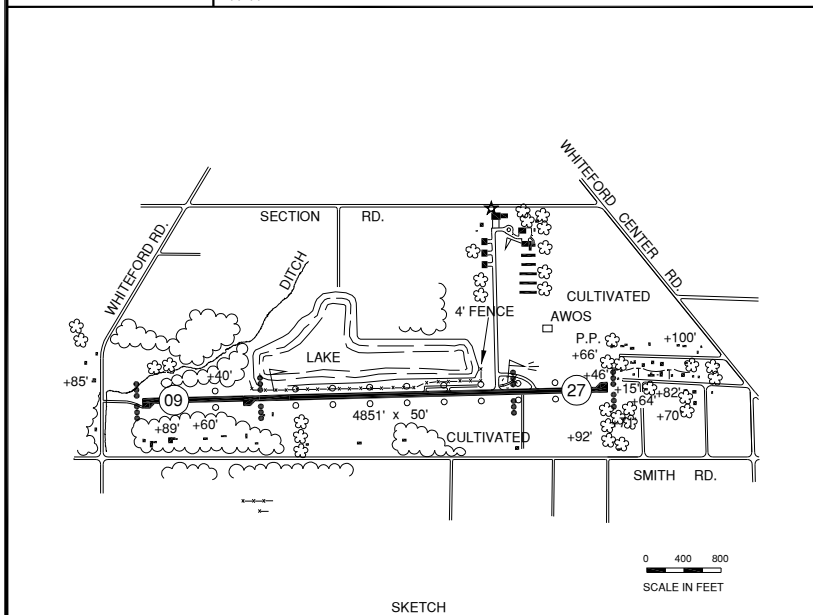
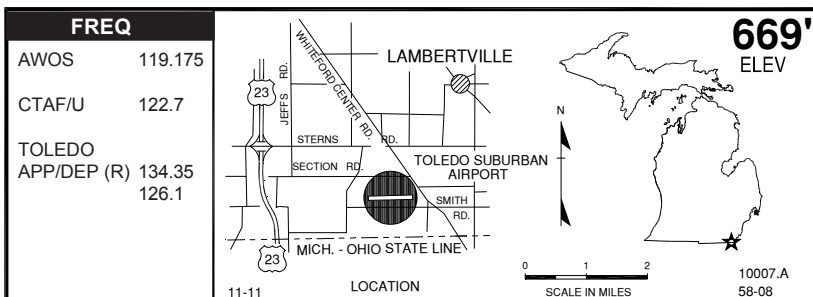
License Class
 General Utility

FM CITY: 1.0 mi NE
LGT: ROTG BCN. MIRL, REIL, PAPI STD
 PCL CTAF.
MGR: Gary Jensen, Arpt Mgr
 Roy Matthews, Asst (on site mgr)
PH: 989-352-6322 (Village Ofc)
 989-352-7306 (Asst/FBO)
 989-352-7473 (Public Works)
FBO: R.M. Aviation 989-352-7306
ATND: 0800-Dusk

NAV AIDS: 117.6 (HIC) 111° 21.0 NM to fld.
FUEL: 100LL
RPR: Major
WX: None
SNW RMVL: Yes
TRNSP: None
MEALS: In town, 1.5 mi South
RON: In town

- Extensive ag opns & heli opns—may use turf N of Rwy 09/27.
- Admin bldg access—depress 5-3-2-1" sequentially.
- For svc aft hrs call asst mgr 989-506-8874 or 616-887-8421.
- Windsock shielded by trees.

LAMBERTVILLE, TOLEDO SUBURBAN (DUH)



RWY LENGTH BEYOND DISPLACED THR

09/ 3553'
27/ 3834'

COORDINATES

41° 44.15N
083° 39.35W

License

Basic Utility

FM CITY: 2.0 mi SW

LGT: ROTG BCN, NSTD MIRL PCL 7X

MGR: Thomas Trumbull

PH: 734-856-6103

FBO: Suburban Avn 734-856-6103

ATND: May-Sep 0800-2030

Oct-Apr 0800 - 1800

NAV AIDS: IAP, 113.1 (VWV) 359° 17.1 NM to fld.

FUEL: 100LL, JET A

RPR: Major A&P

WX: AWOS 734-856-1563, Wx briefing system

SNW RMVL: Yes

TRNSP: Taxi, CC on req

MEALS: In town, 1.0 mi

RON: In town, 2.0 mi

- 90' trees in 27 apch
- Parallel taxiway clsd indefly
- Deer on & invof arpt.

LANSING, CAPITAL REGION INT'L (LAN)

| FREQ | |
|-------------|---------|
| ATIS | 119.75 |
| APP/DEP (R) | 118.65 |
| may use N | 133.475 |
| TWR/CTAF | 119.9 |
| CLNC | 123.675 |
| GND | 121.9 |
| LANSING FSS | 122.2 |
| RCO | 122.2 |
| UNICOM | 122.95 |

CAPITAL REG INT'L AIRPORT
LANSING

EAST LANSING

861'
ELEV

12-11

LOCATION

0 1 2 3
SCALE IN MILES

10010.A
19-01

MAINT. ARFF STATE RD.
3601' X 75'
8506' X 150'
5002' X 120'
10L 24 28L 28R
GS RVR GS
ASOS ASR

LAN
Taxiway
next pg

L

0 500 1000 1500
SCALE IN FEET

SKETCH

RWY LENGTH BEYOND DISPLACED THR

06/ — * 10R/ — * 10L/ —
24/ — * 28L/ — * 28R/ —

COORDINATES

42° 46.72'N
084° 35.17'W

License
Air Carrier

FM CITY: 3.0 mi NW

LGT: ROTG BCN, HIRL, MIRL, PAPI 6/24.
MALSR, REIL—ON REQ TWR.

MGR: Robert Selig, Exec Director

PH: 517-321-6121
517-321-8525

FBO: Avflight 517-321-7000;
Beacon Aviation of Michigan 517-327-3333;
EMU Aviation 734-481-3000

ATND: 24 hrs

NAV AIDS: IAP, 110.8 (LAN) 058° 6.1 NM to
fld, ILS.

FUEL: 100LL, JET A

RPR: Major A&P

WX: ASOS 517-886-0015, LLWAS

SNW RMVL: Yes

TRNSP: Taxi, Rntl car, limo, bus (at arpt)

MEALS: At arpt / in town

RON: 4.0 MI, CC

- FAA Class "C" Airspace.
- Lndg fee for acct ovr 6500#.
- U.S. Customs Airport of Entry, ADCUS svc avbl 517-327-1054.
- Birds on & invof arpt.

LANSING, CAPITAL REGION INT'L (LAN)

FREQ

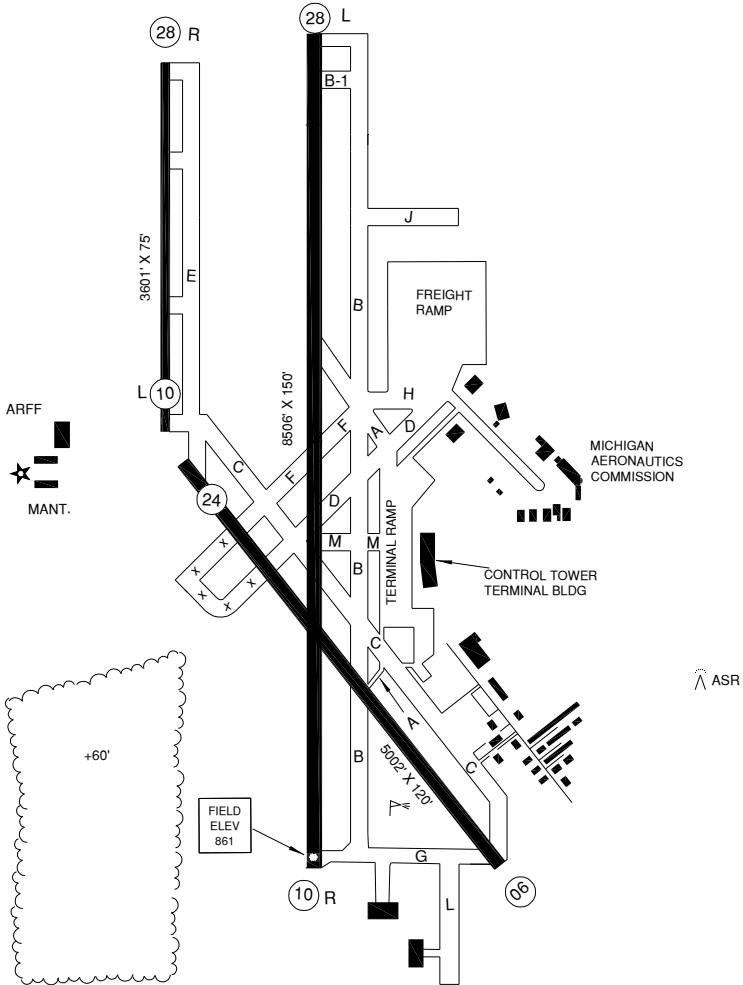
| | |
|-------------|-----------|
| ATIS | 119.75 |
| APP/DEP (R) | 118.65 |
| may use | N 133.475 |
| TWR/CTAF | 119.9 |
| CLNC | 123.675 |
| GND | 121.9 |
| LANSING FSS | |
| RCO | 122.2 |
| UNICOM | 122.95 |

CAUTION: BE ALERT TO RUNWAY CROSSING CLEARANCES.
 READBACK OF ALL RUNWAY HOLDING INSTRUCTIONS IS REQUIRED.



APRIL 2010
 ANNUAL RATE
 OF CHANGE
 0.1°W

861'
 ELEV



LAPEER, DUPONT - LAPEER (D95)

| FREQ | |
|-------------|---------|
| CTAF/U | 123.0 |
| AWOS | 134.05* |
| FLINT | |
| APP/DEP (R) | 118.8 |
| FNT | |
| ATIS | 133.15 |
| RCO | 122.3 |

12-11 LOCATION

SCALE IN MILES

834'
ELEV

10013.A
44-01

SKETCH

RWY LENGTH BEYOND DISPLACED THR

09/ 1391' * 18/
27/ — * 36/ —

COORDINATES

43° 03.99'N
083° 16.29'W

License Class
General Utility

FM CITY: 2.0 mi NE

LGT: ROTG BCN. MIRL, REIL, PAPI, rwy 18/
36 std pcd CTAF.

MGR: Ron Keil

Phone: 810-664-6966
810-406-2064

FBO: Lapeer Avn 810-664-6966

ATND: 0800-1800. Unatnd Christmas, New Year,
Easter, Thanksgiving

NAV AIDS: IAP, 116.9 (FNT) 080° 21.8 NM to fld.

FUEL: 100LL, Jet A **

RPR: Major A&P, Avncs

WX: Awos 810-664-5038

SNW RMVL: Rwy 18/36

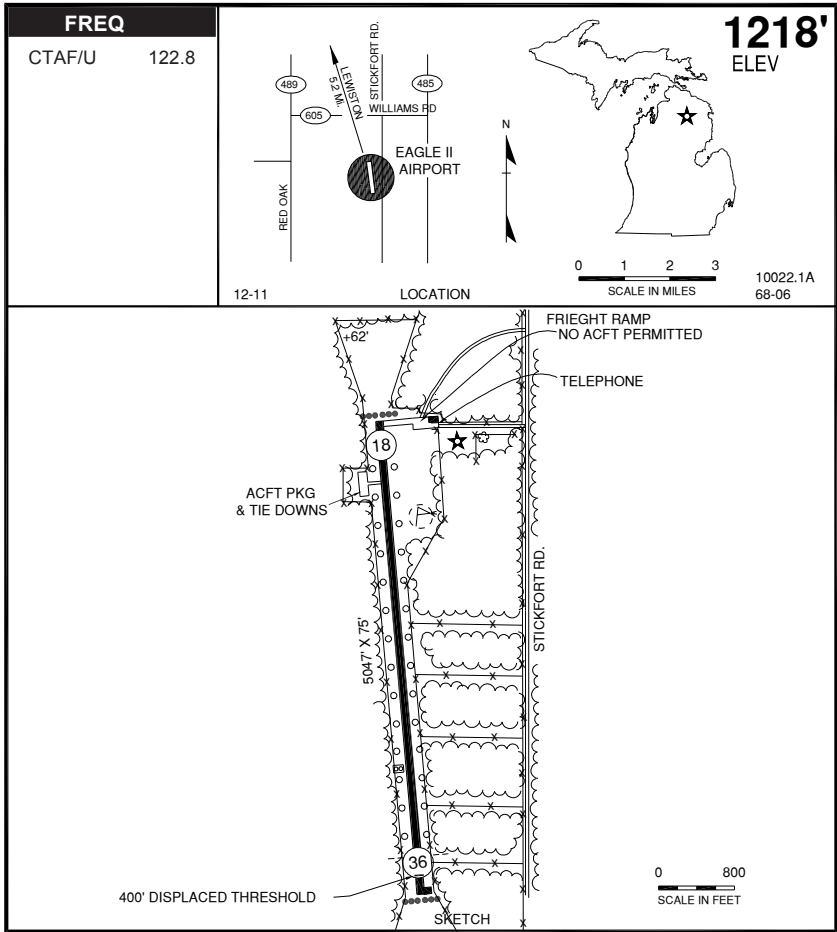
TRNSP: Taxi, Rntl car.

MEALS: In town

RON: In town, 3.0 mi

- Rwy 09/27 CLSD Nov thru Apr and when snow covered.
- Admin bldg access-depress V, then simultaneous III-II, then I.
- Deer & birds on and invof rwy.
- *Awos frequency expected to be commissioned spring 2012
- **24 hr self svc.,.
- Txy lgt ots indef.

LEWISTON, EAGLE II (8M8)



RWY LENGTH BEYOND DISPLACED THR

18/ —
36/ 4647'

COORDINATES

44° 48.39'N
084° 16.57'W

License
General Utility

FM CITY: 5 mi SE

LGT: MIRL, BCN, PAPI rwy 36, STD PCL - CTAF.

MGR: Gary Vollmar

PH: 810-444-8640

FBO: None

ATND: Unatnd

NAV AIDS: 109.2 (GLR) 130° 22. NM to fld.

FUEL: None

RPR: None

WX: None

SNW RMVL: Arpt second priority-confirm cond.

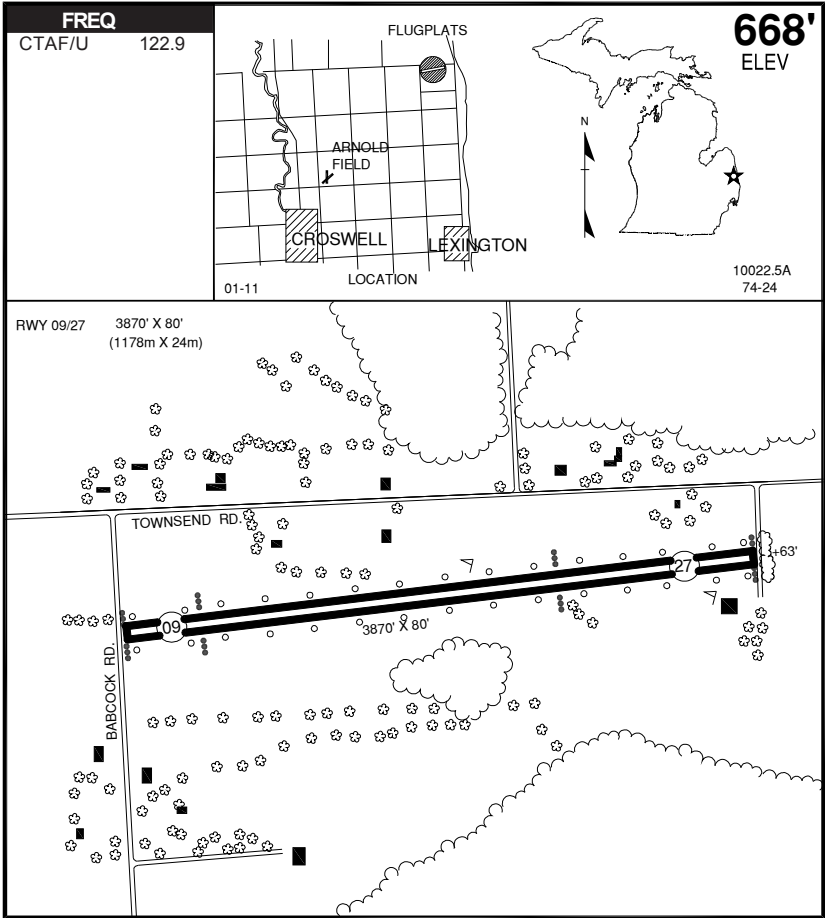
TRNSP: None

MEALS: None

RON: None

- Gate access- 5,3,2,1. Keep gate closed.
- Arpt is fenced for ingress or egress.
- Elk & deer invof arpt.
- Lndg fee \$20.00 single, \$40.00 twin, \$100.00 jet. Overnight pkg single \$20.00, twin \$30.00, jets \$50.00.
- Non-aviation related cargo ops on N ramp; no acft parking. Acft use W ramp.
- Vehicles crossing rwy.
- Larg cracks in pavement.

LEXINGTON, FLUGPLATZ (7MI)



RWY LENGTH BEYOND DISPLACED THR

09/ 3461'
 27/ 2660'

COORDINATES

43° 20.82' N
 82° 33.13' W

License:
 Basic Utility

FM CITY: 5.0

LGT: None

MGR: Bill Schutzler
 George Crackel, Asst

PH: 810-359-7497

FBO: None

ATND: Unatnd

NAV AIDS: 114.0 (065 ECK 9 DME) 051° 12.5

NM to fld.

FUEL: None

RPR: None

WX: None

SNW RMVL: No

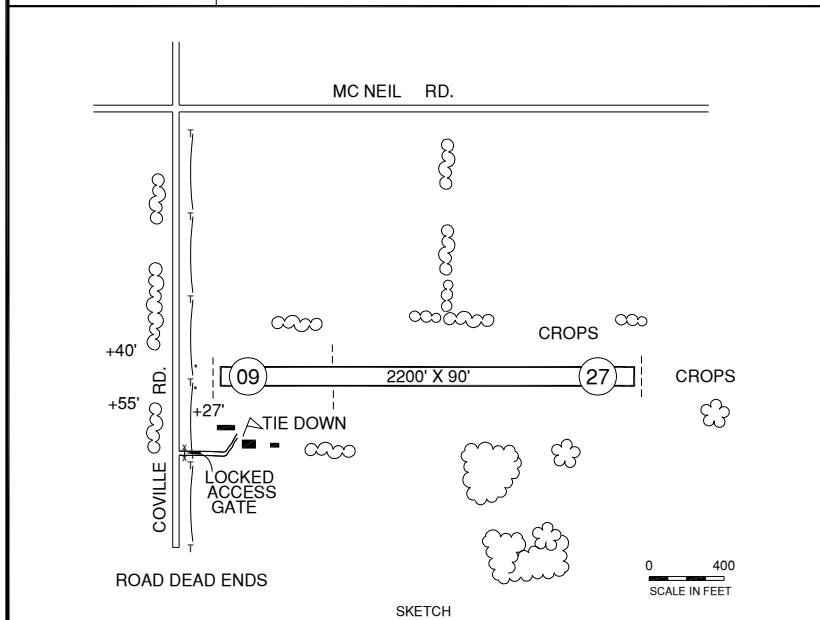
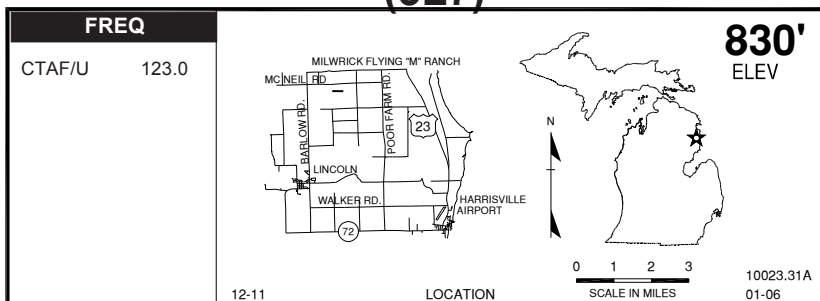
TRNSP: None

MEALS: None

RON: In town, 5 mi

- Deer on and invof rwy.
- Rwy marked w/ white buckets.

LINCOLN, MILWRICK FLYING "M" RANCH (3L7)



RWY LENGTH BEYOND DISPLACED THR

09/ 1600'
27/ —

COORDINATES

44° 44.31'N
083° 22.78'W

License:

Basic Utility

FM CITY: 3.0 mi N

LGT: None

MGR: Nancy Milwrick

PH: 989-736-0800

FBO: None

ATND: Ireg May - Oct (Owner resides at arpt)

Clsd Nov - Apr and when snw coverd.

NAV AIDS: 116.9 (ASP) 010° 18.0 NM to fld.

FUEL: None

RPR: None

WX: None

SNW RMVL: No

TRNSP: By prior angmt

MEALS: 5.0 mi

RON: In town, 5.0 mi

- Rwy 09 apch +32' pline mkd with yellow spheres.
- Rwy soft in spring.
- Rwy slopes down from west to east, ireg terrain.
- Arpt access gate locked. call mgr.
- Deer on and invof rwy.

LINDEN, PRICE'S (9G2)

| | | |
|---|--------------------------------------|---|
| <p>FREQ</p> <p>CTAF/U 123.0</p> <p>FLINT APP/DEP (R) 118.8 ATIS 133.15</p> | <p>12-11 LOCATION SCALE IN MILES</p> | <p>920' ELEV</p> <p>10023.9A 25-07</p> |
|---|--------------------------------------|---|

SKETCH

RWY LENGTH BEYOND DISPLACED THR
09/ 3402'
27/ 3200'

COORDINATES
42° 48.46'N
083° 46.20'W

License
General Utility

FM CITY: 1.0 mi S

LGT: MIRL rwy 09/27, REIL rwy 09 - std pcl CTAF.

MGR: Cody Welch
Nick Nicolay, Asst.
Mike Bezzeg, Asst.
Geoffrey Geisz, Asst.

PH: 810-735-1109 (Terminal)
810-735-6569 (Ofc)
586-946-5381 (Mgr cell)
248-459-4656 (Asst mgr)

FBO: Linden Airport Leasing 810-735-6569

ATND: Ireg

- Admin bldg access-depress 5-2-3-1.
- *Fuel 24 hr self serve
- Deer & birds on invof arpt.
- Residential airpark.
- Trees apch end rwy 9& 27.

NAV AIDS: IAP, 116.9 (FNT) 193° 9.6 NM to fld

FUEL: 100LL*

RPR: Minor A&P by prior arngmt

WX: None

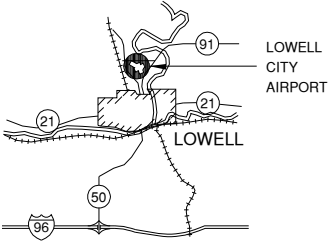
SNW RMVL: Yes

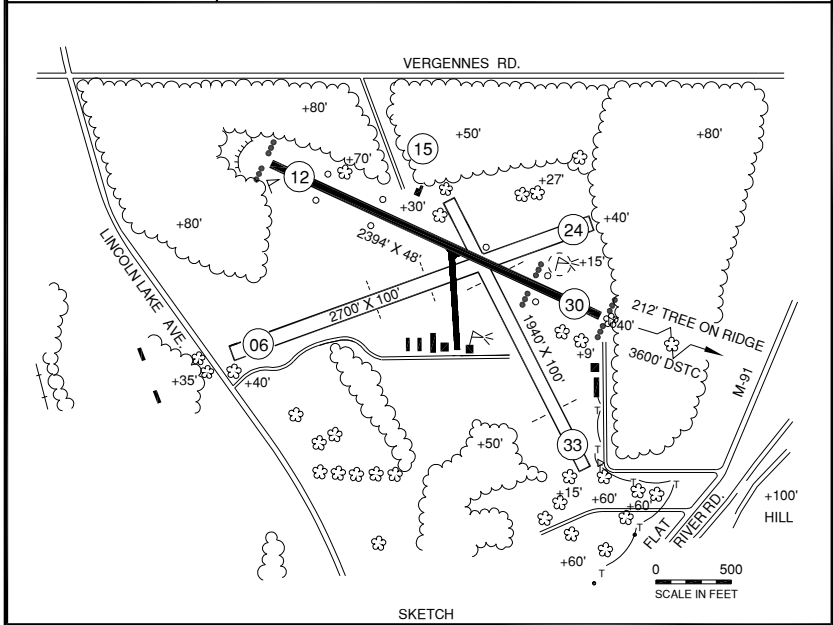
TRNSP: Taxi 810-629-7080

MEALS: In town, .5 mi

RON: In town, 3.0 mi

LOWELL CITY (24C)

| | | |
|--------------------------------|---|---------------------|
| FREQ CTAF/U 123.0 |  | 681' ELEV |
| 12-11 | LOCATION | 10033.A 41-03 |



RWY LENGTH BEYOND DISPLACED THR

06/ 1600 * 12/ 1791' * 15/ 1358'
 24/ 1500 * 30/ 1894' * 33/ 1552'

COORDINATES

42° 57.24'N
 085° 20.64'W

License

Basic Utility

FM CITY: 1.0 mi N

LGT: LIRL - CTAF

MGR: Jim Sowle

PH: 616-897-5785

616-897-2530 (Mgr Res)

FBO: Williams Air Power 616-897-5785

ATND: 0900-1700

NAV AIDS: 115.95 (GRR) 035° 12.3 NM to fld.

FUEL: 100LL

RPR: Major A&P

WX: None

SNW RMVL: Rwy 12/30 only

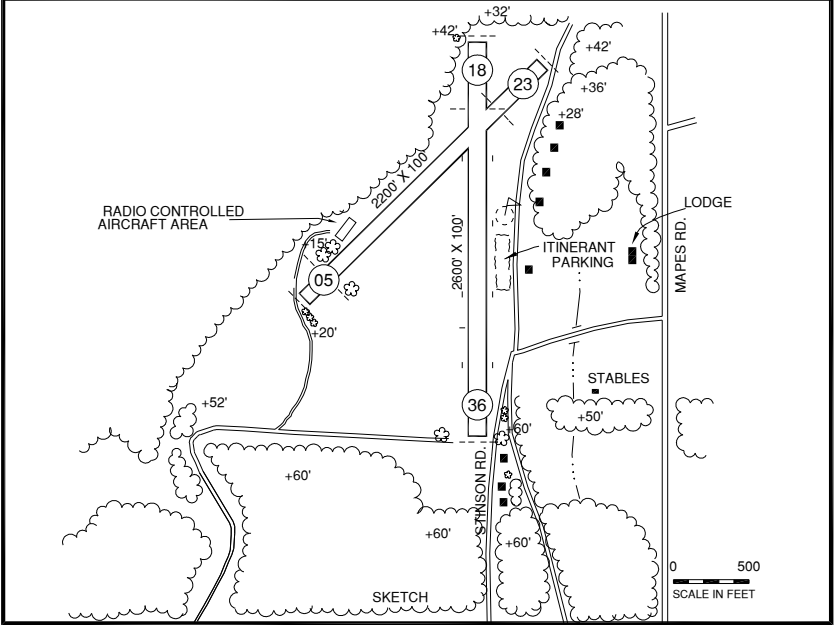
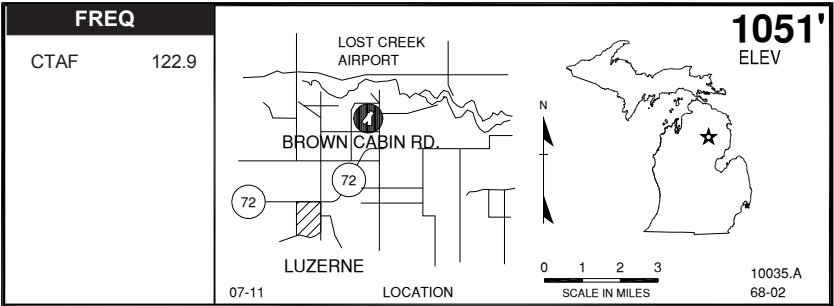
TRNSP: None

MEALS: In town, 1.0 mi

RON: None

- Admin bldg access depress V, III, II, I (not simultaneous).
- Non std rwy mkgs.
- Rwy 6/24 bare spots in turf, rough & uneven.
- Rwy 12/30 extensive cracking.
- Rwy 15/33 rough & uneven.

LUZERNE, LOST CREEK (5Y4)



RWY LENGTH BEYOND DISPLACED THR

05/ 2000' * 18/ 2160'
23/ 1785' * 36/ 1885'

COORDINATES

44° 39.60'N
084° 14.23'W

License
Basic Utility

FM CITY: 3.0 mi NE
LGT: None
MGR: Cliff Olson
PH: 734-775-1953
734-654-7933 (Res)
FBO: None
ATND: Unatnd

NAV AIDS: 111.6 (HTL) 052° 25.0 NM to fld.
FUEL: None
RPR: None
WX: None
SNW RMVL: None
TRNSP: May be arranged
MEALS: Adj @ Lodge 989-826-9901
RON: Adj @ Lodge

- First 200' rwy 36 soft sand.
- Lost Creek Sky Ranch adj—ph 989-826-9901.
- Rustic camping avbl.
- Deer on & invof arpt.
- RC model acct oper on rwy 05.