

CFPCA rises to the challenge

As we all know, change is the only constant in life, and this year will be no exception. While the state restored funds cut in the last fiscal year, low funding levels caused the college to make permanent cuts in the general fund budget for supplies, equipment and part-time faculty. However our current situation presents both the challenge and the opportunity to remain clear in our core values and to keep moving forward. We remain energized by outstanding faculty, successful programs and initiatives that offer our students meaningful opportunities to learn through direct engagement and application in the "real world."

This issue of *Expressions* spotlights our departments including new department leadership, outstanding faculty and alumni accomplishments, updates on student successes and the status of our fund raising efforts. Check out the Research Enhancement Program in the Arts that awarded \$165,000 to eight of our talented faculty, the momentum of our WAYNE FIRST: The Campaign for Wayne State University where CFPCA is at 70% of its unit goal, or the tremendous success of the Heidelberg Project's 20th anniversary which provided a focal point for celebrating the amazing power of art to transform a Detroit neighborhood.

The "real world" mantra embedded in Wayne State's mission is as real as our location in an

urban setting that reminds us daily of society's many challenges, the complexity of today's issues and the promise of opportunity and progress. In this spirit I would like to share a new and exciting initiative that is underway.

I am very proud to announce the creation of *ArtsIMPACT, an Incubator for Creative Processes, Products and Sustainable Models*. ArtsIMPACT is the newest tenant at Tech Town, Detroit's research and technology park. Thanks to the leadership of Wayne State University's President Irvin D. Reid, this 12-block area adjacent to the north end of campus is a growing community of entrepreneurs, investors, mentors and corporate partners that is nurturing high-tech companies for Michigan's future. ArtsIMPACT joins Tech Town as a center of innovation. Entrepreneurs in the arts (or those whose work utilizes creative processes to facilitate produce or market new ideas, goods, services or products) will be able to find needed inspiration, support and resources. Watch for more about ArtsIMPACT on the horizon.

In closing, I cannot overstate the importance of the WAYNE FIRST campaign to the college and the university. It is vital to the promise of a robust future. For those of you who we proudly count as alumni, I ask you to reflect upon your days at Wayne. Which professor or class made a difference in your life? Which experiences prepared you for your current profession or set you on a different course? Please help shape the important experiences

and fond memories for our current generation of students by giving back to your alma mater. Help the College of Fine, Performing and Communication Arts remain competitive by maintaining quality faculty and providing an enriched educational environment.

To those alumni and friends who have supported the campaign thus far, I say "thank you." To those who have yet to make a gift, I invite you to put Wayne first, and make your charitable gift to the college today. While we've come far, we have much farther to go. And now, more than ever, we need your support.



— Sharon L. Vasquez, Dean

Visit giving.wayne.edu for continuous updates on the university's comprehensive capital campaign and to join the effort with your financial contribution.

PROGRESS REPORT: CFPCA takes great strides toward capital campaign fund raising goal

The College of Fine, Performing and Communication Arts experienced another successful year during fiscal year 2006/07 having raised \$1,404,702 in new gifts and pledges. To date, the college has raised \$15.3 million or approximately 70% of its fundraising goals for *WAYNE FIRST: The Campaign for Wayne State University*. Since the capital campaign's inception, the college is proud to have established 46 new endowment funds, of which 25 are endowed scholarships.

While we have much to celebrate, much work remains to be done. As we move into the "broad base" phase of the capital campaign, we need the help of all of our alumni and friends to achieve our goals for the future. Wayne State University, like most other higher education institutions is faced with considerable challenges:

- State funding continues to decrease.
- Federal funding of university research, teaching and service is declining.
- Competition for the best and brightest students has never been more intense.
- Private support is playing an ever increasing role in total university funding as competition for such funds has never been greater.

These trends are complicated by the burden upon all institutions to keep up with the demanding pace of technological advancement. That is why it is critical to put Wayne first.

Why put Wayne first?

There are variety reasons to put Wayne first! Look back on your time as a fine, performing and communication arts student. What do you consider your most memorable and meaningful experiences? Was it performing on the stages of the Bonstelle or Hilberry theaters? Was it participating as a member of the WSU forensics team? Or, was it participating in a study abroad experience? These experiences would not continue to be possible for current or future students without the aid from private support.

Reasons to Give

Private support includes gifts and grants given to the college and university by alumni and friends, corporate and foundation supporters and other organizations that are committed to helping Wayne State University fulfill its mission. While motivations for giving often vary, they are all important to WAYNE FIRST. Many individuals view their support as a means of accomplishing personal goals or supporting values and beliefs. Some simply give because they view their support as a good investment while others value the knowledge

and experiences they have received and desire to ensure the same for future generations of students.

What would be your motivation to give? Perhaps it would be to:

- Remember someone you love or respect by naming a scholarship, a professorship, a lectureship - even a building.
- Maintain an interest or affinity in a specific program you wish to see grow and succeed.
- Demonstrate your leadership and your support for higher education.
- Support your financial or estate planning through philanthropic tax advantages.

Whether you want to make a difference for a student, a professor, a department, a program, or challenge others to give, you can show your gratitude for your WSU experiences through a gift. All gifts are vital to WAYNE FIRST because they help us remain among the best public universities in the nation providing the highest quality.

For more information on how you can put Wayne first and support CFPCA, please contact Dana C. Moore, director of development at dcmoore@wayne.edu or (313) 577-5342.

What's Inside?

This issue of *Expressions* is arranged according to CFPCA's core values. Read our mission and values statement at www.cfPCA.wayne.edu/StrategicDirections.pdf

- Real-world teaching and learning 2
- Public and disciplinary leadership 4
- Accessibility: intellectual, physical and financial 6
- Diversity of people, ideas and expression 8

Expressions

"The cuts to our budget are deep but we cannot identify with this or be defined by it. Our current situation presents both the challenge and the opportunity to remain clear in our core values and keep moving forward."
– Dean Sharon L. Vasquez, CFPCA's Fall Faculty Assembly, 18 Sep. 2007

This issue of *Expressions* is arranged according to the college's specific core values as articulated in its *Strategic Directions* vision statement available at www.cfpc.wayne.edu/StrategicDirections.pdf

Dance Workshop Company slated for New York City premiere

Celebrating its 80th anniversary year in 2008, the Wayne State University Dance Workshop Company will present its first ever performance in New York City in March. As one of only twelve university dance departments invited world wide, Wayne State University was selected to perform at the fourth national conference, *Sharing the Legacy 2008*, concert as part of Hunter College's Kaye Playhouse Series, celebrating historically significant dance of the 20th century.

For its New York City debut, the WSU Dance Workshop will perform **Jan Van Dyke's** seminal work, *Spike* (1982) to **Laurie Anderson's** haunting score *O. Superman* on March 14-15. *Sharing the Legacy 2008* focuses on the work of choreographers who have significantly shaped dance between 1960 and 1989. The series is on-going and since 2002 the Hunter College Dance Program has hosted three national conferences and five distinct legacy forums.

Project director, Dr. **Doug Risner** noted, "While WSU has continuously distinguished itself as a regional and national leader in dance performance and education over the past five years, this New York City debut solidifies Wayne State as the place to dance for outstanding dance education and performance opportunities."

Wayne State began its fruitful relationship with Van Dyke in 2005 when she was chosen as an Allesee Artist in Residence, setting upon the WSU dancers her award-winning work, *Round Dance*, commissioned by the London-based Laban Centre in 1985. WSU dancers took top honors with this work at the American College Dance Festival in 2005. In New York, WSU dancers will perform her work, *Spike*, originally commissioned by the Contemporary Dance Theater of Cincinnati in 1982.



Jan Van Dyke, Allesee Guest Artist will stage her seminal work, *Spike*, for WSU performances in New York City.



WSU dancers earned American College Dance Festival honors with their performance of Van Dyke's *Round Dance* in 2005.

Music partners with DSO

Student musicians in the WSU Wind Symphony, Chamber Orchestra and Jazz Big Band enjoyed opportunities last semester to learn from and perform with woodwind star **Eddie Daniels**, along with the Detroit Symphony Orchestra, in a special concert November 9 at Orchestra Hall.

Daniels, a clarinet legend and a true renaissance musician, revolutionized the blending of classical music and jazz. Equally at home in both genres, his breathtaking virtuosity has won him numerous Grammy awards and nominations.



Eddie Daniels, performed on the stage of Orchestra Hall, Nov. 9, with the WSU Wind Symphony, Chamber Orchestra and Jazz Big Band. Music students benefited from two different guest artist visits with Daniels during the fall '07 semester.

Stage training with the pros

Theatre artists-in-residence

In mid-October the Dept. of Theatre hosted a team of trainers from the Stratford Shakespeare Festival as artists-in-residence. Clockwise from top left: acting coach **Laura Condlin** gives notes to students **Aaron Kirby** and **James Kuhl**, acting coach **Sean Arbuckle** blocks a scene with student **Chris Corporandy**, scenic designer **Douglas Paraschuk** gives a classroom of design students feedback on their own projects.



More than \$175,000 awarded to CFPCA faculty

Through a new program generated by Wayne State President Irvin D. Reid to support research in the arts and communication, eight CFPCA faculty members received awards for 2007-08 in the university's highly selective Research Enhancement Program. The awards, which total more than \$175,000, act as seed money to take each faculty member's project to a stage where it can attract external funds.

2007 awardees include asst. professor of communication **Juanita Anderson** for her project *Senegalese Filmmaker Ousmane Sembene*; assoc. professor of art and art history **Dora Apel** for *War Culture: Art, Media and Contemporary War*; assoc. professor of music **Chris Collins** for *Detroit/Torino Urban Jazz Project*; lecturer of theatre **Mary Cooney** for *Raise the Curtain on the Classics*; assoc. professor of art and art history **Brian Kritzman** for *Identity Constructing Reality Constructing Identity*; assoc. professor of art and art history **Brian Madigan** for *The Numinous Image in Classical and Late Antiquity*; asst. professor of dance **Linda Simmons** for *The Village School* and assoc. professor of music **Terese Volk** for *A Project to Catalog and Digitize the Music Manuscripts of the Works Progress Administration*.



Anderson



Apel



Collins



Cooney



Kritzman



Madigan



Simmons



Volk

ART IS ON THE MOVE

Opening invisible doors

In September, Wayne State joined in celebrating the 20-year anniversary of the provocative and internationally recognized neighborhood art installation known as the Heidelberg Project, created by Detroit artist **Tyree Guyton**.

A wonderful new work by Guyton was added to the University Art Collection. Dedication of the sculpture *Invisible Doors* took place Sep. 28 in the courtyard of the Wayne State Welcome Center. After the outdoor dedication, the Department of Art and Art History welcomed all to the opening reception of the exhibition *Street Sense: Celebrating 20 Years of the Heidelberg Project*, which ran at the Elaine L. Jacob Gallery Sep. 28 through Dec. 14. Wayne State University and the Heidelberg Project also presented a public symposium on the artistic and cultural implications of the Heidelberg Project on Sep. 29 in the Schaver Music Recital Hall adjacent to the Elaine L. Jacob Gallery.

Included in the show *Street Sense* were Guyton's preliminary sketches for Heidelberg installations, historical and contemporary photographs of the project, works of art by Guyton which reflect the free-spirited energy of the Heidelberg Project and sculptural works from the Project itself, on special temporary loan for the exhibition.

The exhibition, symposium and related activities and a significant portion of the newly created sculpture *Invisible Doors*, were made possible by generous funding from the Joyce Foundation of Chicago. "We are thrilled to be a recipient of a Joyce Award to support Midwest cultural organizations to commission new works by artists of color," said CFPCA Dean **Sharon L. Vasquez**. "This prestigious award is a very positive reflection on the strengths of the artists in Detroit, and WSU is proud to present programs which help showcase the work of our city's artists."

Street Sense was the first major exhibition focusing on the Heidelberg Project's 20-year history, creating a fresh opportunity to examine and interpret the many facets of Guyton's urban art, and to reconsider its ability to transform environment and encourage multicultural dialogue.

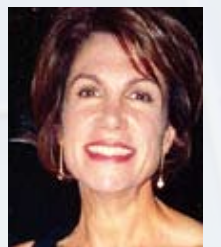


Invisible Doors by Heidelberg Project artist **Tyree Guyton** was added to the University Art Collection. The striking, towering sculpture, unveiled and dedicated Sep. 28, stands in the Welcome Center Courtyard on Warren between Woodward and Cass.

Curating the galleries

Lisa Baylis Gonzalez was appointed director of art exhibitions in 2007. Gonzalez oversees the university's Elaine L. Jacob Gallery, a modern, two-story facility with an active schedule of exhibitions covering a broad spectrum of art and design, and the Community Arts Gallery, which focuses on the work of WSU students, alumni, faculty and Michigan artists.

Together, Wayne State's art galleries offer unique opportunities for both the university and the Detroit metropolitan communities to be educated and inspired by art and design from our region, across the United States and around the globe. In her first year, Gonzalez set about expanding the types of exhibitions and related educational programs presented, securing new resources for the galleries and increasing student and community involvement so that the benefits of the experiences offered by the presentation of special exhibitions can be widely enjoyed.



Gonzalez

Gonzalez joined Wayne State with over 20 years of experience in arts and culture organizations, including the J. Paul Getty Museum, the Fine Arts Museums of San Francisco, the Minneapolis Institute of Arts and the Flint Institute of Arts. Gonzalez serves as a peer reviewer for the American Association of Museums, the Michigan Council for the Arts and Cultural Affairs and the Institute for Museum and Library Services. She also has done a variety of management and program consultancies for arts organizations nationwide. Gonzalez is an active member of the Contemporary Arts Council of Detroit, the Community Connections Committee of the Detroit Institute of Arts and the Cultural Alliance of Southeastern Michigan.

Tending the art collection

Sandra Schemske was appointed director of the University Art Collection in 2007. A lifetime supporter of the arts, Schemske studied painting at the University of Illinois, Champaign-Urbana, and photography at the University of Arizona in Tucson. Schemske moved to Detroit in 1980 with her husband, photographer **John Ganis**. In 1985 she became an assistant at the Susanne Hilberry Gallery. Schemske served on the exhibition committee of the Detroit Artists Market from 1987-90, chairing the committee from 1989-90. She was appointed to the Board of Directors of the Detroit Artists Market in 1990, serving for five years.

In 1992 Schemske became assistant director of Revolution Gallery in Ferndale, MI, where she curated and co-curated over 40 exhibitions, administered the gallery's public billboard project and supervised the popular internship program.



Schemske

"It is extraordinary that Wayne State University recognizes that a great education includes having art around us everyday," Schemske said. "Art widens our life experiences and challenges the way we think about the world, others, and ourselves." In her first year with Wayne State, Schemske was principal in the University Art Collection being awarded a \$124,500 grant from the Community Foundation for Southeast Michigan. The funding supports essential assessment, conservation and documentation of one of the largest university-owned art collections in the U.S.

Expressions

Our name up in lights

CFPCA alums host tremendous kick off of capital campaign's next phase

Warner Bros. Studios in Burbank, CA, was the site of a red carpet gala on October 25 that officially launched the broad-based phase of *WAYNE FIRST: The Campaign for Wayne State University*. The grand event, attended by over 400 people, was hosted by CFPCA alums **John Richards** '74 '03, producer at Warner Home Video, **David Salzman** '69, producer of *MADtv*, legendary voice and radio host **Casey Kasem** '57. Acclaimed actor **Ernie Hudson** '73 served as master of ceremonies.

In the weeks following the kickoff at Warner Bros., other fundraising events occurred in New York City, Chicago, Washington, Las Vegas and Phoenix. Festivities included meet-n-greets with celebrity alums, addresses from Wayne State officials, videos highlighting milestones of success in the campaign and outstanding dining experiences and entertainment.

Hudson, a particularly enthusiastic Wayne State supporter, traveled to Detroit for one of the events hosted on campus January 6. "I can't imagine a better place to have gone to college," Hudson said. "And Detroit's a good place to be. I meet people all over the world who went to Wayne State and have such a debt of gratitude. This WAYNE FIRST campaign is giving people a chance to give back for what we all received, which is a great education and to be a part of this great city."

The first capital campaign in Wayne State's history is in its seventh year and has raised upwards of \$400 million of its overall \$500 million goal. The beginning of its broad-based phase marks the point at which the campaign goes national, reaching out to the cities that have concentrated populations of Wayne State alumni, connecting with the largest portion of the university's overall support network.



Top: Warner Bros. Studios rolled out the red carpet for over 400 alumni and friends of Wayne State at the October kick off of the capital campaign's broad-based phase. Above left: Dean **Sharon L. Vasquez** with actor **Ernie Hudson** and Dept. of Theatre Chair **Blair Anderson**. Above right: Wayne State President **Irvin D. Reid** presents WSU apparel to Hudson, **David Salzman**, **John Richards** and **Casey Kasem**.

WAYNE FIRST 
THE CAMPAIGN FOR WAYNE STATE UNIVERSITY

Introducing ArtsIMPACT

Incubator for Creative Processes, Products and Sustainable Models

The College of Fine, Performing and Communication Arts has ventured into arts entrepreneurship by launching an incubator for the southeast Michigan region. Housed among the twelve-square-block area now known as Tech Town, between the north edge of WSU's main campus and Detroit's New Center Area, ArtsIMPACT will occupy space within Tech One, a recovered former GM engineering center, that soon will be buzzing with the excitement of new artistic business ventures.

Our nation's economic and social shift to a "post industrial age" has been a topic of study and discussion from numerous perspectives. Scholars have identified an emerging "creative class" as a major driving force for the economic development of post-industrial cities. A new demographic segment of society made up of knowledge workers, intellectuals and artists creates an increasingly important economic force . . . particularly in a metro area such as Detroit's, which struggles to find its new identity in a "post Big Three" era.

Further, this trend represents a major shift from traditional agriculture and/or industry-based economies toward more complex economic structures.

"The arts and communication will play a crucial role in shaping this region's new economy and defining its place in the world market in new ways," said CFPCA Dean **Sharon L. Vasquez**. "ArtsIMPACT envisions a center where any aspiring creative enterprise can find the inspiration, support and resources to launch an entrepreneurial venture that contributes to a Michigan that is renowned as the world's source for culturally, economically and socially successful artistic endeavors."




ArtsIMPACT is housed in the Wayne State Tech Town building known as Tech One. CFPCA now seeks proposals from potential business interests for the exciting new incubator space.

ArtsIMPACT currently seeks interested parties with innovative and entrepreneurial concepts that might be a good fit for the incubator. Programs and services include: space, training and technical support for business startups; access to capital; professional development and training; hosting events that bring together creative arts businesses and the community; nurturing an environment for maximizing skills, originality and proficiency in creative processes and/or products; and managerial expertise for fledgling artists and creative ventures.

Through focus groups with leaders from the cultural sector, faculty and individual artists, CFPCA articulated a focused mission for ArtsIMPACT. Dean Vasquez envisions an incubator that will "produce *transformational* cultural, economic or social impacts that improve the lives of Michigan's citizens."

As a community of entrepreneurs, investors, mentors, service providers and corporate partners that create an internationally recognized entrepreneurial village, currently home to more than 30 companies in the city of Detroit, Tech Town is the ideal location for an arts incubator servicing this region. An entire floor of the Tech One building in Tech Town will be dedicated to ArtsIMPACT. Its location at Wayne State and in Tech Town gives ArtsIMPACT access to the technology and talent that are necessary components of economic development.

 www.techtownwsu.org for more about Wayne State's innovative, global entrepreneurial village



Departments welcome new leaders

CFPCA is benefiting from the work of several excellent faculty members who have stepped up to serve their departments and the college.

Professor of music, Dr. **John Vander Weg**, was appointed chair of the Department of Music after serving in an interim capacity for two years in addition to his duties as the college's associate dean for academic affairs. The college gives great thanks to John for his many years of service as associate dean. Before joining the Wayne State faculty in 2001, Vander Weg taught music theory and percussion at Douglass College of Rutgers–The State University of New Jersey and music theory at the University of Michigan, DePauw University and the University of Texas at San Antonio. Vander Weg received the BMus, MMus and PhD in music theory from the University of Michigan. His book, *Serial Music and Serialism: A Research and Information Guide*, was published by Routledge in 2001.

Raymond Robinson is serving as interim chair of the Maggie Allesee Department of Dance. Robinson was an associate professor of dance at Brigham Young University and performed with the renowned Salt Lake City-based Repertory Dance Theatre as well as California's Keith Johnson Dancers. He also performed with Creach & Co, Ririe-Woodbury Dance Company and Tandy Beal & Company. Acclaimed as a master teacher and choreographer, Robinson presents teaching and choreography intensives across the nation and actively integrates pioneering technology in real-time feedback for students' technical growth and development. Robinson holds an MFA in dance from the University of Utah, a BA in

communications and public relations from Brigham Young University and is pursuing a doctorate in arts administration. Thanks go to former Department Chair, Dr. **Doug Risner**, who returned to the faculty, for his extremely productive years of leadership to the department from 2003 to 2007.

Associate professor of sculpture, **John Richardson**, is serving as interim chair of the Department of Art and Art History. Richardson has served the department in the role of graduate officer and area coordinator for sculpture. He works in a variety of media including cast and welded metals, rubber, wood and stone. He has participated in over 50 national, group exhibitions and has held many one-person exhibitions. His award winning work is held in numerous private and public collections. Richardson earned his graduate degrees in sculpture from the University of Wisconsin-Madison (MFA 1996, MA 1994) and his undergraduate degree from the University of Puget Sound, Tacoma WA (BA with honors, 1993). Former Department Chair, **Tony Crowley**, accepted a position at another university after four years at Wayne State.

Associate professor of painting and drawing, **Jeffrey Abt**, is serving the college this year as interim assistant dean. Abt first went into curatorial and exhibitions work at the Wichita Art Museum, then in the Special Collections Research Center of the University of Chicago, and finally at the University of Chicago's Smart Museum of Art, before coming to Wayne State. Abt has exhibited his artwork throughout the United States and his paintings and drawings are in the permanent collections of several museums as well as several private institutional collections. Abt received his bachelor's and



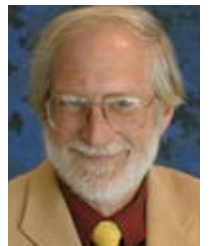
Abt - self portrait



Richardson



Robinson



Vander Weg

master's degrees from Drake University and studied at the Hebrew Union College–Jewish Institute of Religion in Jerusalem. His book, *A Museum on the Verge: A Socioeconomic History of the Detroit Institute of Arts, 1882-2000*, published by Wayne State University Press, received the 2002 Award of Merit from the Historical Society of Michigan.

And the Ovation goes to . . .

Save the date! The 31st annual Ovation Awards, a celebration of achievement to benefit CFPCA, will take place the evening of April 16 at the Ritz-Carlton, Dearborn, with a reception, dinner, silent auction and awards ceremony. The 2008 Ovation Award recipients are:

- Fine artist **Ed Fraga**, *Distinguished Alumni Award*, Dept. of Art and Art History
- Television actor **Thorsten Kaye**, *Distinguished Alumni Award*, Dept. of Theatre
- Television producer **David Salzman**, *Distinguished Alumni Award*, Dept. of Communication, and *Career Achievement Award in the Field of Communication*
- Dancer **Rose Marie Floyd**, *Career Achievement Award in the Field of Dance*
- Musician **George Shirley**, *Career Achievement Award in the Field of Music*
- Executive Director **Susan Mosey**, University Cultural Center Association, *Distinguished Community Service Award*



New CFPCA development officers head up fundraising efforts



Moore

Dana C. Moore joined Wayne State University as CFPCA's director of development in September. Moore brings many years of broad fundraising experience to the university. Most recently, she served as assistant director of development for the College of Engineering at Michigan State University. Prior to her tenure at MSU, Moore served as associate director of development for individual giving at The Old Globe Theatre in San Diego, CA. Moore also served at the Detroit Institute of Arts in several positions in the fundraising department.

Moore is an active member of the Association of Fundraising Professionals and was selected to serve in MSU's University Development Peer Mentor Program. She is a member of the Western Michigan University Alumni Association and the Alumni Association for the University of Michigan. Moore also continues to demonstrate her commitment to serving the community through her service in Alpha Kappa Alpha Sorority, Inc.



Cronin

Kelly Cronin was appointed assistant director of development for the college this January. Cronin has a long history with the college in a variety of positions, most recently, serving in the role of development assistant focusing on special events and budgeting/accounting for development operations. She brings a wonderful knowledge of Wayne State and CFPCA and looks forward to jumping into our development efforts full-time in her new role as a major gifts officer.

A combined team of Public Relations Student Society of America (PRSSA) students from Wayne State and Eastern Michigan University won a competitive bid in October to host the 2008 PRSSA international conference coming to Detroit in October, 2008. The WSU and EMU students traveled to Washington, DC, and Philadelphia to present a professional and polished pitch that was unbeatable.

Expressions

Setting our sites

CFPCA steps up service with second Web site overhaul in four years

CFPCA's brand new Web design, pictured at right, went "live" in late fall and was created for the college by alumna **Rolaine Llanes '05**, who works in WSU's Office of Marketing and Communications. *Expressions* caught up with the talented young designer for a quick Q&A . . .

Expressions: What motivated you toward the "look" you came up with for CFPCA's new Web site?

Llanes: I wanted to express the energy and the eclectic styles that our college houses. We have five departments that offer numerous programs. There are a lot of possibilities! Through experience, I know we have such diverse students, faculty and staff who are very talented and the energy created can't go unnoticed and shouldn't. I think with this new and exciting site we can be even more recognized and have a better appeal to prospective and current students.



Llanes

Expressions: Where did you find your inspiration?

Llanes: The site as an entirety was inspired by the mixture of the traditional and contemporary/modern teachings within the college. The site was built on a traditional structure with two and three columns

but received something unexpected, like the combinations of colors and textures, which was inspiration from our students, faculty and staff. Altogether, I was striving for a vibe of "newness, energy, ever evolving."

Expressions: As an artist, what pursuits are you interested in?

Llanes: My WSU degree is a BFA with a concentration in graphic design. I'm interested in all sorts of art: graphic design; Flash, CSS and HTML Web design; print; silk screening; printmaking; photography; and crafts of various kinds, including scrapbooking, crocheting and invitation/cardmaking.



In late fall '07, CFPCA launched an all-new look to its Web presence, designed by WSU art alum **Rolaine Llanes '05**. At the same time, the college started its own "channel," presenting videos on YouTube. Visit <http://youtube.com/WayneStateCFPCA>

Wayne State University College of Fine, Performing and Communication Arts
Making a difference through research, teaching and creativity

<p>Nira Pullin, MA Professor, Theatre An international performer who specializes in period dance and department. Has participated in teaching exchanges with institutions such as London's Royal Academy of Dramatic Art and Ballet Tanshaus in Munich.</p>	<p>James Hartway, MM, PhD Distinguished Professor, Music An internationally recognized composer and Pulitzer Prize nominee whose works have been performed around the world.</p>	<p>Marion Jackson, PhD Professor, Art History Has an extraordinary record of grants to support her research into the modes of expression of indigenous peoples, the study of which has taken her from Arctic Canada to Brazil.</p>	<p>Matt Seeger, PhD Professor and Chair, Communication An expert in crisis communication whose work exemplifies the interface between academic research and its application to immediate and significant social problems such as terrorism and pandemic concerns.</p>
<p>Melvin Rosas, MFA Professor, Drawing An important artist with an exceptional record of solo exhibitions whose work is recognized for its sophistication, imagination and conceptual value.</p>	<p>James M. Thomas, PhD Professor, Theatre An expert in directing, modern Russian theatre and play analysis who created the highly successful "Month in Moscow," a study-abroad program in the Stanislavsky System at the historic Moscow Art Theatre School.</p>	<p>Chris Collins, MM Associate Professor of Music and Director of Jazz Studies A jazz performer and educator who received a research grant for a project that brings together musicians, artists and economic interests from Detroit and Torino, Italy.</p>	

The College of Fine, Performing and Communication Arts is the university's cultural gateway. We offer access to the innovative ideas, people and technology that will remake our world. We also provide a forum through which local, regional and global leaders may define and direct the evolution of human and artistic communication. The college encourages critical thinking, builds appreciation for the creative process, develops aesthetic values, advances cultural literacy and promotes reasoned debate. I am pleased to introduce seven members of our faculty whose commitment to excellence ensures a positive environment for students' professional and personal growth.

Sharon L. Vasquez, Dean, MFA, CMA
College of Fine, Performing and Communication Arts

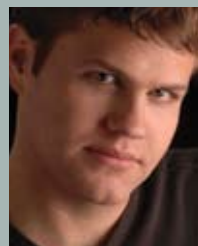
WAYNE STATE UNIVERSITY
COLLEGE OF FINE, PERFORMING AND COMMUNICATION ARTS

Full-page ad as appeared in *Crain's Detroit Business*, fall 2007. To view the ad at full size, visit www.cfpc.wayne.edu

'08 Hilberry Showcase hits the road



Cynthia D. Barker



Michael Boynton



Morgan Chard



Jeff Luttermoser

The 2008 MFA Hilberry Showcase is preparing for their national tour. Selected '08 graduates of the Hilberry program are putting together a showcase of their talent to display across the country as part of the job hunt. In a three-phase campaign they will travel to numerous locations, including Chicago, Washington, DC, and New York City.

The students must raise the funds needed to pay for the annual traveling showcase. To produce this year's showcase requires an operating budget of \$18,500. Dean **Sharon L. Vasquez** is supporting the students by offering to match their dollars raised at a 1:1 ratio. To make a tax-deductible donation to the showcase, simply make your check payable to *Wayne State University: Theatre Graduate Showcase* and send it to ATTN Office of Development, CFPCA, Wayne State University, 5104 Gullen Mall, Detroit, MI 48202. For more information about the showcase, contact **Gregory Grobis** at 313-577-5126. Your support will help ensure that the graduates are given every opportunity to find sustainable employment upon entering the job market. Thank you for your support!



Chris Corporandy



Nathan Magee



Gregory Grobis



Jeff Thomakas



Darek N. Lane



Sean Patrick Ward

Sixth Apple Award brings Broadway producer David Stone to campus, students



Chair of CFPCA's Board of Visitors, **Sue Nine**, with **David Stone** and Vice-Chair of the college's BOV, **Richard Strowger**

Wayne State University and the Nederlander Company honored noted Broadway producer **David Stone**, October 3, as the sixth recipient of the Sarah Applebaum Nederlander Award for Excellence in Theatre.

Award-winning Broadway producer David Stone, known for his work on the acclaimed musicals *Wicked* and *The 25th Annual Putnam County Spelling Bee*, was honored at the gala celebration. The evening included a cocktail reception, a strolling supper and presentation of the Apple Award, followed by a performance of the 2005 Tony Award-winning musical *The 25th Annual Putnam County Spelling Bee*.



MFA students in the Hilberry Theatre Management Program, pictured here with a portrait of Sarah Applebaum Nederlander, were thrilled to meet and have a master class with renowned Broadway producer **David Stone**.



The sixth annual Apple Award presentation ceremony included, left to right, Department of Theatre Chair, **Blair Anderson**; event sponsor LaSalle Bank Wealth Management Group Senior Vice President, **John Irwin**; **Fred Nederlander**; **David Stone**; WSU Vice President of Development and Alumni Affairs and President of the Wayne State University Foundation, **Susan Burns**; and **Robert Nederlander**.



Recipient of the sixth annual Apple Award, **David Stone**, with CFPCA Dean **Sharon L. Vasquez**

Collectible

Among those named "Best Local Artists to Collect" by *HOUR Detroit* magazine in June were alums **David Barr '62 '66**, **Kristin Beaver '04**, **Sandra Cardew '89 '92**, **Sergio DeGiusti '66 '68**, **Ed Fraga '80**, **Christine Hagedorn '74**, **Catherine Peet '91** and **Jo Ann Powers '74**.

Also listed were retired professor of painting **Robert Wilbert**, professors of painting and drawing **John Hegarty** and **Mel Rosas** and professor of ceramics **Joe Zajac**.

The critical list was compiled by Detroit collector and curator, and chair of the board for Detroit Artists Market, **Dan Grascuck '68 '71 '74**.

There's a role here for everyone to play

It's easier than ever to add your support to the College of Fine, Performing and Communication Arts. Use the *Make A Gift* tab on the college's newly re-designed web site www.cfPCA.wayne.edu or make use of the form below.



Please indicate a designated fund for your gift:

- Dean's Discretionary Fund
- Art Dept. Visiting Artist Fund
- Forensics Endowment Fund
- Measell Challenge in Public Relations
- Dance's Kick It Up! Campaign
- Music Scholarships
- Leonard Leone Campaign
- Other _____

Gift Amount: \$ _____

Name _____

Address 1 _____ Addr. 2 _____

City _____ State _____ ZIP _____

E-mail _____

Phone Number _____ Mobile Number _____

Payment Information (Please make checks payable to Wayne State University.)

Credit Card Type _____ Expiration _____

Card Number _____

Name as it appears on the card _____

Some employers will match gifts to Wayne State. Please inquire with your company's human resources department. This gift will be matched by:
Your employer _____

Spouse's employer here _____

Planned Gifts: For more information on estate gifts, please e-mail plannedgifts@wayne.edu

Please clip this completed form and mail to: Director of Development, CFPCA Dean's Office, 5104 Gullen Mall - WSU, Detroit, MI 48202.

Expressions

WSU Jazz Big Band headlines Detroit International Jazz Fest

For the second year in a row, the Wayne State University Jazz Big Band was invited to accompany a headline artist performing at the Detroit International Jazz Festival at Hart Plaza on the downtown riverfront Labor Day weekend. This year, the featured artist was Grammy-nominated vocalist, **Kurt Elling**. Here are some of the highlights in photos.




Annual lecture series in dispute resolution hosts Senator Carl Levin

United States Senator **Carl Levin**, above right, greeted by Wayne State President **Irvin D. Reid**, delivered an address titled "The Unique Senate Approach to Dispute Resolution" at the 2007 annual Stanley Hank Marx Lecture Series in Dispute Resolution, September 10.

Over one hundred guests attended the event at the Law School's Spencer M. Partrich Auditorium. Despite health problems, the late **Hank Marx** also attended and delivered a greeting. President Reid introduced Senator Levin to a crowd filled with distinguished guests, college deans, faculty, staff, students and alumni. Senator Levin's talk focused on the policies and procedures of resolving disputes in the United States Senate. He touched on four key points about how the Senate resolves disputes and recommended these as guidelines for people in their own conflicts.

Senator Levin went on to share his views about the Senate's roles in resolving conflict in Iraq and the importance of changing policy through the election process in an effort to improve procedures in the Senate. A lively question and answer discussion with the audience followed.

The annual Hank Marx lecture is sponsored by the Master of Arts in Dispute Resolution (MADR) program in the Department of Communication.

 comm.wayne.edu/madr.php
for more information about the Master of Arts in Dispute Resolution program



Philanthropists and staunch CFPCA supporters, **Maggie and Bob Allesee**, at right, pictured with their guests **Patricia Hill Burnett** and **Robert Silar**, sponsored the Hilberly Season Opening Gala (formerly President's Preview), October 6, in the Newnan Lobby of the Hilberly Theatre

Visual Arts

Ericia Bartiels '07, Annette Berenholz '02, Christine Bossler '05 and Carol Tomasso '07 contributed works of art to the exhibit of the Michigan Silversmiths Guild at the 2007 Ann Arbor South University Art Fair in July.

Valeria (Colombatto, Petrini) Brown '70 is a retired member of the part-time faculty of psychiatry in the Wayne State School of Medicine. After earning her MFA in painting in 1970, Brown took on special training and became Michigan's first licensed art therapist. "My teachers Louise Nobili, Pat Quinlan and Robert Wilbert were valued friends," Brown told *Expressions*. She lives in New Mexico and has nine grandchildren.



Brown

Sarah Colburn '77 is the proprietor of Scott Colburn Boots and Western Wear in Livonia, MI. The second-generation family business, founded in the '50s, was voted the region's best store for western wear by *HOUR Detroit* magazine.

Debra Ferraro '01 is director of product design for Carhartt, Inc., one of the world's leading manufacturers of premium outerwear for construction and manufacturing workers, farmers, ranchers and outdoor enthusiasts. Her bachelor's degree from Wayne State is in Fashion Design and Merchandising, Department of Art and Art History.

Michelle Figurski '07 was named Artist of the Month in November by the City Cultural Commission of Sterling Heights, MI. A photographer, Figurski has had her work shown in exhibitions in Chicago, the Grosse Pointe Art Center and the Intermediate Photography Exhibition in Ferndale, MI.



Figurski

Ben Good '07 was appointed design technician, Department of Art, University of Notre Dame. He recently completed an installation project titled *Reconstruction/Deconstruction* at the Torpedo Factory Art Center in Alexandria, VA.

Meredith Haggerty '02 received an MFA in art from the University of Chicago and began work for the University of Chicago Hospitals in a position created expressly for her as a Movement Specialist, based on her graduate studies, in which she is to develop a program dedicated to body awareness.

Walter Hamady '64 is an artist specializing in handmade books, collage and sculpture with a long record of production and exhibition going back more than 40 years. He is a former professor of art at the University of Wisconsin-Madison. Writing to *Expressions*, Hamady recalled Wayne State instructors Olga Constantine and Pat Quinlan as "top notch!"

Darlene Kryza Hartigan '91 wrote *Kiss Rattle Slither*, a book for young children about the wonderful, but dangerous, desert-dwelling creatures of the Southwest.

Carol Luc '74 '91 was one of the professional artists participating in Chicago's summer 2007 public art project titled *Cool Globes: Hot Ideas for a Cooler Planet*. Over 100 artists designed five-and-a-half foot globes to reflect artistic solutions on the issue of global warming. All globes were on display along Chicago's lakefront. Luc designed a globe titled *Gracie Greenroof*, which demonstrates the benefits of using green roofs in an urban area. Visit www.coolglobes.org.



Luc

Debbie Masuoka '82 is facility coordinator for the Okada Sculpture Facility of the Bemis Center for Contemporary Arts in Omaha, NE. "My years at Wayne State were formative," she told *Wayne State* magazine, recalling fondly the support and personal integrity of Associate Professor Tom Paul Fitzgerald.

Alfred Samuels '76 '86 works in the human resources department at Visteon Corp. in Plymouth, MI. A former printer in the photographic photomedia department at Ford Motor Company's headquarters in Dearborn, MI, Samuels is an accomplished photographer who used to teach photography at Wayne State. He and his wife Phyllis '76 '81 live in Lathrup Village, MI.

Stephen Schudlich '07 is an illustrator and graphic designer whose work has appeared in numerous national magazines and who has illustrated for many national corporate brands. He has worked with many children's publishers on educational projects, as well as projects outside of the educational forum. His work was featured in the advertising and signage for the Tony Award-winning musical *Avenue Q*. He recently illustrated the book *The Down-to-Earth Guide to Global Warming*. He teaches illustration and graphic design for both Wayne State and Detroit's College for Creative Studies.

Nick Sousanis '02 '03 was appointed Director of Exhibitions for Work: Detroit, an exhibition space in the University of Michigan Detroit Center at Orchestra Place. Fall 2007 saw the exhibit run of a group show titled *Intersections* which included the work of fellow WSU alum **Stephen Schudlich**. Sousanis also is co-founder of thedetroit.com and reports on fine art for *The Detroit News* and Detroit's *Metro Times*.

Joan Verla '02 exhibited sculpture in a show titled *Art of Sacrifice* at Altered Esthetics Gallery in Minneapolis, MN, in September.



Blair

Performing Arts

Sidney Blair '50 '55 recently contracted and performed a Lawrence Welk alumni concert at the Peabody Auditorium in Ormond Beach, FL. Blair is a retired system fine arts chairperson of East Detroit Public Schools and retired musician with the Detroit Symphony Orchestra and the Fisher Theatre. He produced and performed a jazz concert with fellow alums **James** and **Dawn Blair** and **Ernie Daunter** at Florida's Museum of Art and Science for the Northeast Florida Jazz Association.

Marianne Leitch Breneman '95 is founding member and managing director of Conundrum, a classical quartet based in Cincinnati. Breneman is a member of the Kentucky Symphony Orchestra's clarinet section and is part-time faculty at the College of Mount St. Joseph. She also is co-owner of Koka Coffeehouse and Lounge in Cincinnati and is a tri-athlete and runner with husband Brian and two golden retrievers.

Jacqueline Echols '03 is touring Europe performing the role of Clara in a production of *Porgy and Bess*. She also has performed the lead role of Bess to critical acclaim.

George Fetter '61 '63 retired Dec. 31 after more than 30 years as director of school service at Marshall Music in Lansing, MI. Fetter, an accomplished trumpeter, is former band director at Waterford Kettering High School in Waterford, MI, and is active in the leadership of the Michigan School Band and Orchestra Association.

Beth Ann Gibaud '04 and Brian Thibault '05 were married Sep. 28 in Detroit. The couple resides in Sterling Heights, MI, where they purchased their first home together.



Gibaud and Thibault

John Kash '99 '05 recently performed a series of four organ recitals throughout Poland, Denmark and Sweden. This marks Kash's third concert tour of Europe. He is director of music for Saints Peter and Paul Roman Catholic Church in Detroit, where he produces an annual concert series which showcases local, national and international performers.



Kash

Robert Maniscalco '83 wrote the 2007 book *Point of Art* about his journey toward personal growth and creative self expression. The painter, musician and actor is former founder of Maniscalco Gallery in Grosse Pointe, former host of *Art Beat* on PBS and now lives in Summerville, SC.



Maniscalco

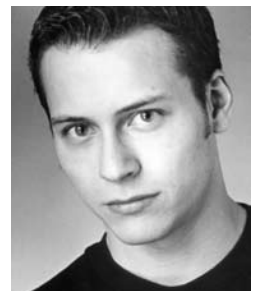
Cedric Miller '98 is the author of *Lance Lebos, The Journey Home*, the story of a man who seeks to live life in the moment. It is available throughout the country in bookstores and online.

Karri (Brantley) Ostergaard '01 founded the nationally touring Bright Star Children's Theatre located in Asheville, NC. Entering its fifth year, the company tours to 11 states providing more than 500 shows to young audiences annually. In September, Ostergaard performed at the National Theatre in Washington, DC, with the Asheville-based female sketch comedy group, Love Ya Like A Sis.



Ostergaard

Frank Polito '93 performed with fellow alums **Craig Bentley '92** and **Pamela Sabaugh '93** in the world premiere of Polito's play, *Another Day on Willow St.* at the New York International Fringe Festival in August. The play was produced by Woodward Avenue Productions, the theatre company the trio founded in 2000. In October, the Talkin' Broadway 2007 Summer Theatre Festival Citations were announced and *Another Day on Willow St.* was chosen as "Outstanding New Play."



Polito

Ray Schultz '91 '99 performed the role of Father Flynn in Detroit Repertory Theatre's fall 2007 production of the Pulitzer Prize-winning play *Doubt* by John Patrick Shanley. Schultz will direct a summer '08 production at Ann Arbor's Performance Network Theatre.



Schultz

Armen Shaomian '03 continued his studies at the University of Miami, FL, where he received a Master of Music in accompanying and chamber music in 2005, and is now continuing at the same university in the Doctor of Musical Arts Program in accompanying

"When I got back from Vietnam, I began the photography curriculum at Wayne State. I remember coming out of a room with wet film and telling my wife, 'I've decided what I want to be.' I was hooked."
- Photographer Alfred Samuels '76 '86

Expressions

and chamber music with a minor in music business and entertainment industries. Shaomian served as a two-term president of the University of Miami Graduate Student Association, served on the board of the National Association of Graduate and Professional Students and currently is managing director of CAT 5 Music Publishing, the first and largest graduate student run music publishing business in the country.



Shaomian

Paul Stolarsky '55 '61, former teacher in the Detroit Public Schools and member of the Hilberry and Bonstelle theatre companies, appeared in a national commercial for Life cereal and recently had the pleasure of performing in *The Sunshine Boys* with Jack Klugman and Paul Dooley at the George Street Playhouse in New Brunswick, NJ. He is also the proud grandfather of three wonderful, talented future stars. In 2007, Stolarsky celebrated his 51st anniversary as a member of the Actors Equity Association.



Stolarsky

Barbara Tarbuck '63 played *Mother Courage* on a guest artist contract at University of Nevada, Las Vegas, in the spring of 2007. She currently is starring as Kevin McKidd's mother on the NBC primetime series *Journeyman*.



Tarbuck

Communication

Grace Aduroja '02, a student at the University of Michigan Law School, received U-M's Diversity Scholarship from Dykema, a Midwest-based law firm. Aduroja, a member of the Black Law Students Alliance and Phi Delta Phi legal fraternity, was chosen for the honor based on her professional achievements, academic strength and commitment to diversity.



Aduroja

James Birdsall '79 was named a 2007 Alumni Fellow at Dickinson State University in North Dakota. After finishing his master's degree at Wayne State in 1979, Birdsall moved to Kansas City, MO, to join an acting company where he performed in over 50 productions. His acting experience led him to a successful career in the voiceover business. He has been the voice for many companies, including Wal-Mart, State Farm and Samsung. He is the voice for the Hallmark Hall of Fame, the network voice for CNBC and the voice of NFL films and NASCAR.

Steve Blow '96 is a vice president at Eisbrenner Public Relations in Troy, MI. With more than 15 years experience in the automotive industry, he provides public relations expertise and counsel to many of the firm's automotive and technology clients.

Ed Busch, attended '64-69, is a retired broadcaster and founder of Ed Busch Productions in Dallas/Fort Worth. Busch's extensive career in both radio and television spans more than 30 years. He was inducted into the Texas Radio Hall of Fame.

David Gilchrist '97 is a communications/marketing assistant at First Advantage Corporation in St. Petersburg, FL. He also is a weekend disc jockey and production assistant for Cox Radio.

Jennifer Greenfelder '04 is an account executive at Bianchi Public Relations in Troy, MI. She joined Bianchi as an account coordinator in 2005 and was promoted to assistant account executive in 2006.



Henige

Mary Henige '86 '93 received the Robert Hefty Distinguished Service Award from Detroit's chapter of the Public Relations Society of America in November. Henige is communications director for North American Vehicle Sales, Service and Marketing at General Motors Corp. She is an award-winning public relations professional who has held a variety of communications positions in her 21 years with GM. Henige also serves as professional advisor to Wayne State's chapter of the Public Relations Student Society of America.

Jeff Kazmierski '96 is president and CEO of Active Media Architects, a company based in St. Clair Shores, MI, which constructs custom Internet tools and serves as a consultant to multi-national companies in designing unique Web sites. Founded in the late '90s, Active Media Architects has experienced upwards of 40 percent growth each of the past three years.



Killenberg

Jessica Killenberg '96 '99 is a vice president at Troy-based Bianchi Public

In Memoriam

William Bostick '54 died Aug. 14 at the age of 94. A leader in the art community, Bostick served as secretary of the Detroit Institute of Arts from 1946 to 1976. While serving in the Navy during World War II, he rendered topographical maps that aided in the invasion of Normandy and were featured in a *National Geographic* article commemorating the invasion. Three of his paintings are in the DIA's permanent collection and other are displayed in public and private collections throughout Michigan. One of the final shows during his life, titled *William Bostick: Historic Detroit Landmarks*, ran in late summer at Detroit's Scarab Club where Bostick was a former club president and a member of 70 years. He is survived by his wife, **Mary Jane '38 '40**, and his children **Christopher** and **Beatrice**.

Lee Sherman Dreyfus, who taught speech and mass communication at Wayne State from 1952 to 1962, died Jan. 2 at the age of 81 at his home in Waukesha, WI. He had suffered from heart and breathing problems. Dreyfus served in the Navy during World War II, earned his undergraduate and graduate degrees at the University of Wisconsin-Madison and was a former chancellor at UW-Stevens Point. He was elected governor of the State of Wisconsin in 1978 and served one term. As governor, he is most remembered for deep tax cuts and for signing into law the nation's first statewide gay rights measure in 1982, making it illegal in Wisconsin to discriminate on the basis of sexual orientation in housing, employment and public accommodations.

Expressions recently learned of the 2002 passing of former art instructor **Ian Hornak '64 '66** at the age of 58 in Southampton, NY. After earning a BFA and MFA at Wayne State and going on to teach in the art department, Hornak moved to New York City where for over 30 years he was represented in many prestigious galleries. His paintings are included in many of the world's most important private collections and in several museums. In early fall, 2007, his personal effects were inducted into the Smithsonian Institution's Archives of American Art in Washington, DC.

Rex Lamoreaux '76 died Oct. 12 at age 89 at Pontiac Osteopathic Hospital. Over the years of his life, Lamoreaux donated more works of art to the University Art Collection than anyone else and established an endowment to maintain the collection in

perpetuity. "Wayne State and my art collection have been very important parts of my life," Lamoreaux once said, "and I want to provide for the University Art Collection so that others will be able to enjoy it and learn from it." In fall 2006 a major exhibit was installed at WSU's Community Arts Gallery titled *Rex Lamoreaux Collects*, a tribute to Lamoreaux's collection and all he did for the university's collection.



Lamoreaux

Expressions recently learned of the 1989 passing of **Samuel Lerner '49** who died of cancer in Los Angeles at the age of 86. Lerner was a Rumanian-born songwriter for American and British musical theatre and film who was perhaps most known for having written the "I'm Popeye the Sailor Man" song for *Popeye* cartoons and "Falling In Love Again," **Marlene Dietrich's** song in the 1930 classic film *The Blue Angel*.

Stanley (Hank) Marx '72 '07 died Oct. 21 of congestive heart failure at age 83 at his home in Birmingham, MI. At Wayne State, Marx earned a bachelor's degree in psychology and a master's degree in conflict management. A factory owner and entrepreneur who felt a strong calling for the field of dispute resolution, Marx was appointed by former Mayor **Dennis Archer** to the Detroit Police Commission, where he served more than four years. The Wayne State Department of Communication's annual lecture series in dispute resolution is named in honor of Marx.



Marx

Let us hear from you!

Our alumni and friends are important to us and we look forward to hearing from you. Please let us know what is happening with you. We'll try to include you in the next issue of *Expressions*. **Photos are especially welcome** - please consider sending a current photo!

Also, alumni now can update their information directly through the new WSU Alumni Community web site! Registration is easy at www.wsualumnicommunity.com

Name _____ Graduation Year(s) _____
 (Please also include your name as it was during your time at WSU, if it has changed.) and Major(s) _____

Home Address _____

City _____ State _____ ZIP _____ E-mail _____

Describe any career advancement, honors, publications, appointments, activities, etc.

Feel free to send additional pages if you need more space. Or, even better, respond entirely via e-mail to David Romas, CFPCA Information Officer, ac2942@wayne.edu If responding via hard copy: David Romas, *Expressions*, CFPCA Dean's Office, 5104 Gullen Mall - WSU, Detroit, MI 48202; FAX 313-577-5355.

Relations. She started her career in public relations as an intern at Bianchi and has been with the company for 11 years. Killenberg is accredited in public relations by the Public Relations Society of America and is actively involved in the organization's Detroit chapter. She also is a member of the Automotive Press Association, Business Networking International, is a founding member of Wayne State's Public Relations Advisory Board and is a part-time instructor in the Department of Communication.

Mike Lewis '04 is the first director of journalism at the University of Michigan-Flint. Lewis, a former reporter/anchor for WDIV TV-4 in Detroit, recently received a first place award for investigative reporting from the Detroit chapter of the Society for Professional Journalists. "Even after working long days reporting news for Channel 4, I always enjoyed going to WSU for my grad courses. The faculty was fabulous, especially Dr. Matt Seeger and the late Dr. Bernie Brock, who were valued mentors and true friends," Lewis told *Expressions*. "Although I've since moved on to other universities, I always speak fondly of Wayne State."



Lewis

Gary Lockard '79 is a colonel in the Air Force and serves as the chief of strategic communications at Grissom Air Reserve Base in Peru, IN. He also is active in the educational community as an adjunct instructor of communications and academic advisor at Ivy Tech Community College in Kokomo, IN. In the fall, Lockard was presented with an Excellence in Adjunct Teaching award at Ivy Tech's annual awards banquet.

Daniel Loepf '82 '86 was named chairperson of the Detroit Regional Chamber in July. He succeeds former Detroit Mayor Dennis Archer as chair. Loepf is president and CEO of Blue Cross Blue Shield of Michigan. Loepf joined Blue Cross in 2000 and held several positions prior to becoming president and CEO, including executive vice president, senior vice president and chief of staff, and vice president of governmental affairs.



Loepf

Michelle Franzen Martin '96 is editor of *Wayne State* magazine, the periodical for members of the Wayne State University Alumni Association. In the fall, Martin began teaching as a part-time instructor of journalism in the Department of Communication. "It's exciting to be a part of the department where I got my BA!" she told *Expressions*.



Martin

Dorothy Rich '54 is founder/president of the nonprofit Home and School Institute and creator of MegaSkills for Dorothy Rich Associates, Washington DC, a training program for people of all ages for making the most of academic experiences; www.megaskills.org.

Karen (Lennox) Schives '75 is a retired speech and language teacher and speech and language coordinator for the Essex County Board of Education in southwestern Ontario.

Karen Tintori '70 co-wrote a thriller titled *The Illumination* scheduled to be published in 2008 by St. Martin's Press. Tintori's first book was written in 1991 and she has gained increasing national and international recognition ever since, writing both fiction and nonfiction. She wrote two books **Tintori** published in 2007, *The Book of Names* (with co-author **Jill Gregory**), a thriller focused around the Kabbalah, and *Unto The Daughters: The Legacy of an Honor Killing in a Sicilian-American Family*, both by St. Martin's Press. Both *Unto The Daughters* and *Trapped: The 1909 Cherry Mine Disaster* (Atria Books, 2002) will be taught at Italian American Studies classes at Harvard University Extension School in Spring 2008. Karen is a popular speaker, a member of the International Thriller Writers and Novelists Inc. and a dual citizen of the United States and Italy. She lives with her husband **Lawrence Katz '69 '72** in West Bloomfield, MI.



Tintori

Kim Trent '91, former president of Wayne State's Organization of Black Alumni, is director of Governor Jennifer Granholm's southeast Michigan office.

Mary Ann Tyler-Allen '86 '99 is serving as the current president of the Wayne State University Alumni Association.



Tyler-Allen

Cassandra Ulbrich '03, was named director of corporate and foundation relations at Wayne State in January, 2008. A member of the State Board of Education, Ulbrich was selected to participate in Leadership Detroit's Class XXIX, led by the Detroit Regional Chamber.



Ulbrich

Lisa Vallee-Smith '84 is CEO of Airfoil Public Relations in Southfield, MI, which appeared in the Dec. 13 *New York Times* in a feature about innovative office suite designs that provide new amenities intended to increase collaboration among workers and decrease fatigue.



Valee-Smith

Shaun Wilson '96 was appointed vice president, marketing manager, at National City Bank. Wilson oversees all integrated marketing efforts for the bank throughout southeast Michigan. Prior to joining National City, Wilson was managing partner of Wilson PR, a joint-venture strategic public relations and marketing firm that represented top Detroit area companies. He also held the position of vice president at John Bailey & Associates, Inc. Public Relations.

Michael Zarobe '85 '02 is assistant director for alumni relations at University Liggett School in Grosse Pointe, MI. He was also appointed to the Board of Visitors for Wayne State University Press. Zarobe is a PhD student and part-time faculty member in the department of communication and lives in Grosse Pointe Shores.



Zarobe

Nonprofit Org.
U.S. Postage
PAID
Detroit, MI
Permit No. 3844

WAYNE STATE
UNIVERSITY
COLLEGE OF FINE, PERFORMING
AND COMMUNICATION ARTS

Sharon L. Vasquez, Dean

Expressions Winter 2008

Editor: David Romas

Contributors: Mary Alleyne, Suzanne Smith Arney, Chris Collins, Kelly Cronin, Norah Duncan IV, Lisa Gonzalez, Greg Grobis, Lezlie Hart, Andrea Lafferty, Michelle Franzen Martin, Dana Moore, Doug Risner, Stephany Sowards
Photography: Rick Bielaczyc, Kelly Gottesman, Joe Kvorciak, Andrea Lafferty, Mary Jane Murawka, David Romas

WSU Board of Governors

Tina Abbott; Richard Bernstein; Eugene Driker; Debbie Dingell; Diane Dunaskiss; Paul Massaron; Annetta Miller; Jacquelin Washington; Irvin D. Reid, *ex officio*

WSU Executive Officers

Irvin D. Reid, *President*; Nancy Barrett, *Provost and Senior Vice President, Academic Affairs*; Susan Burns, *Vice President, Development and Alumni Affairs and President, Wayne State University Foundation*; John Davis, *Vice President, Treasurer and Chief Financial Officer*; Andrea Roumell Dickson, *Executive Vice President and Chief of Staff*; Hilary Ratner, *Vice President for Research*; Harvey Hollins III, *Vice President, Government and Community Affairs*; Louis Lessem, *Vice President and General Counsel*; Julie Miller, *Secretary to the Board of Governors and Senior Executive Assistant to the President*

Wayne State University has the Carnegie classification RU/VH, the nation's highest rating for research universities.

ADDRESS SERVICE REQUESTED

Wayne State University
College of Fine, Performing
and Communication Arts
5104 Gullen Mall
Detroit, Michigan 48202

Three simple ways to create a lasting legacy for the College of Fine, Performing and Communication Arts

Did you know . . .

. . . you can make a significant contribution that may not have been possible during your lifetime by remembering CFPCA in your estate plans?

. . . you can create a gift plan that will benefit you and your loved ones financially and at the same time impact the programs and people of the college for generations to come?

. . . you can avoid or reduce income taxes with your estate gift to CFPCA?

It's all possible with your planned gift to the College of Fine, Performing and Communication Arts.

A planned or estate gift is often described as "leaving a legacy" because these types of gifts have a lasting impact on the future, whether by endowing scholarships or department chair positions or helping fund programs and capital projects. Here are three simple ways in which you can remember the college in your estate plans:

- **Charitable bequests** are gifts to the college specified in a will or trust. Charitable bequests can include cash, marketable securities, real estate, tangible property or closely held stock.
- **Retirement plan assets** are perhaps the most advantageous asset to consider when making a planned gift. Qualified retirement planned assets, if passed to anyone other than a spouse

or charitable organization, will be subject to income tax and perhaps estate tax, depending on the size of the estate. By removing retirement plan assets from your estate and naming CFPCA a sole or partial beneficiary, you can avoid this taxation and be assured that 100% of the portion you specify will go to the college for the programs that matter most to you.

- **Life income plans**, such as charitable remainder trusts and charitable gift annuities, allow you and/or your loved ones to receive income from the plan's assets for life while providing a generous future gift to the College of Fine, Performing and Communication Arts. With a life income plan, other benefits include immediate tax savings, possible increased income from low-yield stock and possible avoidance of the capital gain tax on gifts of long-term appreciable property.

In deep appreciation to those who include Wayne State University and its colleges, schools and programs in their estate plans, WSU recognizes these individuals as members of the Old Main Society, named for the university's landmark building, Old Main.

For more information on you how you can create your legacy for the College of Fine, Performing and Communication Arts, please contact Dana C. Moore, director of development, dcmoore@wayne.edu or 313-577-5342.