

The Israel Museum, the largest cultural institution in Israel, houses encyclopedic collections of works dating from prehistory to the present day in Archaeology, the Fine Arts, and Jewish Art and Life. Since opening in 1965, the Museum has built a collection of nearly 500,000 objects representing the full scope of artistic creativity and world material culture. The galleries at the top of the campus contain permanent displays from the collections as well as temporary exhibitions. In addition, the Museum offers its local and international visitors a dynamic Youth Wing, a serene Art Garden, and the Shrine of the Book, home to the 2,000-year-old Dead Sea Scrolls.

In the summer of 2010, the Museum completed a comprehensive upgrade of its 20-acre campus, adding new galleries, facilities, and public spaces and transforming its three collection wings. Preserving the spirit of the original design by Alfred Mansfeld and Dora Gad, the renewal led by James Carpenter Design Associates of New York and Efrat-Kowalsky Architects of Tel Aviv is designed to enhance visitor experience of the Museum's unique collections, architecture, and setting.



Shrine of the Book

The Shrine of the Book is home to the renowned Dead Sea Scrolls, archaeological artifacts, and rare medieval manuscripts of the Hebrew Bible. Its distinctive modern design, by Frederick Kiesler and Armand Bartos, joins architectural symbolism with the unique objects inside to create a sense of the sublime. The upper level of the Shrine introduces visitors to the story of the Scrolls and the Judean Desert sect. At the heart of the Shrine is a presentation of original Dead Sea Scrolls – examples of sectarian texts and the oldest biblical manuscripts in existence, from the eight most complete scrolls ever discovered – surrounding a full-scale facsimile of the magnificently preserved Great Isaiah Scroll.



Art Garden

The Billy Rose Art Garden, designed by Isamu Noguchi as a unique blend of Zen principles, Mediterranean setting, and Western art, is considered one of the world's great sculpture gardens and has been a delight to visitors for over 40 years. The garden offers an experience of the major developments in the modern Western sculptural tradition, from the late 19th century to the present, with works by contemporary artists added on a regular basis. On view are sculptures by modern masters including Jacques Lipchitz, Henry Moore, and Pablo Picasso, together with recent site-specific commissions by such artists as Magdalena Abakanowicz, Mark Dion, James Turrell, and Micha Ullman.

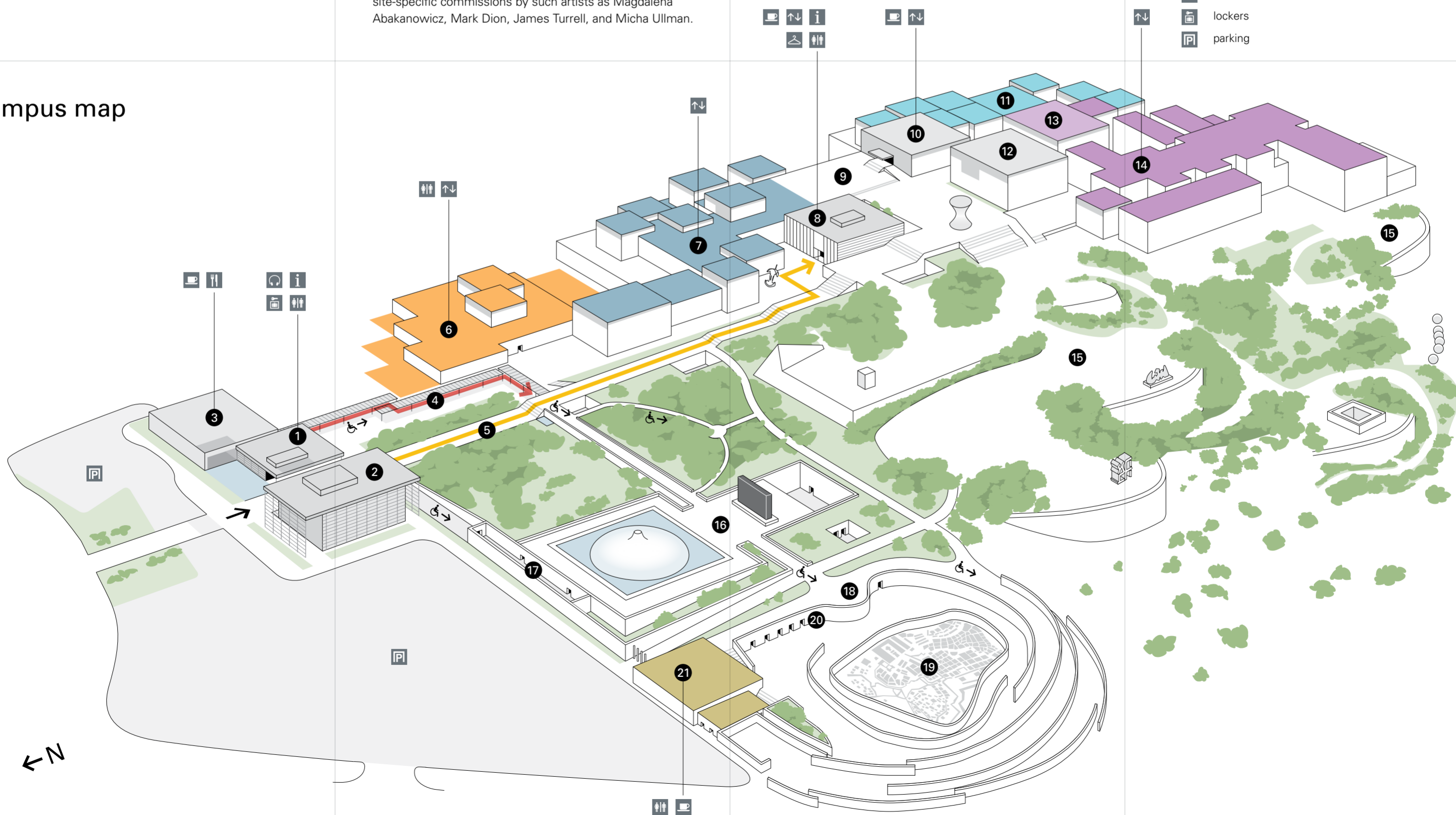


Model of Jerusalem in the Second Temple Period

This detailed 1:50 scale model, covering nearly one acre, recreates the topography and architecture of ancient Jerusalem at its peak in 66 CE, shortly before its destruction by the Romans. One of the city's cultural landmarks, the model was originally built in the 1960s at the Holyland Hotel; in 2006 it was restored and transferred to the Israel Museum campus. Here it provides a three-dimensional contextual illustration for the period documented by the Dead Sea Scrolls, when Rabbinic Judaism took shape and Christianity was born. It also makes a striking visual connection to the Shrine of the Book and to the nearby Knesset, the National Library, and the Supreme Court, symbols of modern Jewish statehood.

- 1 entrance pavilion / exit
- 2 museum shop
- 3 restaurant and café
- 4 route of passage
- 5 carter promenade
- 6 youth wing for art education
- 7 archaeology
- 8 gallery entrance
- 9 crown plaza
- 10 upper gallery entrance
- 11 jewish art and life
- 12 library
- 13 focus gallery
- 14 fine arts
- 15 art garden
- 16 shrine of the book
- 17 dead sea scrolls information and study center
- 18 second temple model: lookout
- 19 second temple model
- 20 shrine of the book auditorium
- 21 tour group entrance / exit
- main entrance
- ↻ wheelchair-accessible path
- to gallery entrance via enclosed route of passage
- to gallery entrance via carter promenade
- ♿ restrooms (wheelchair accessible)
- ↑↓ elevators
- i information
- 🍴 restaurant
- ☕ café
- 🎧 audio guides
- 👕 cloakroom
- 🗳 lockers
- 🅇 parking

campus map





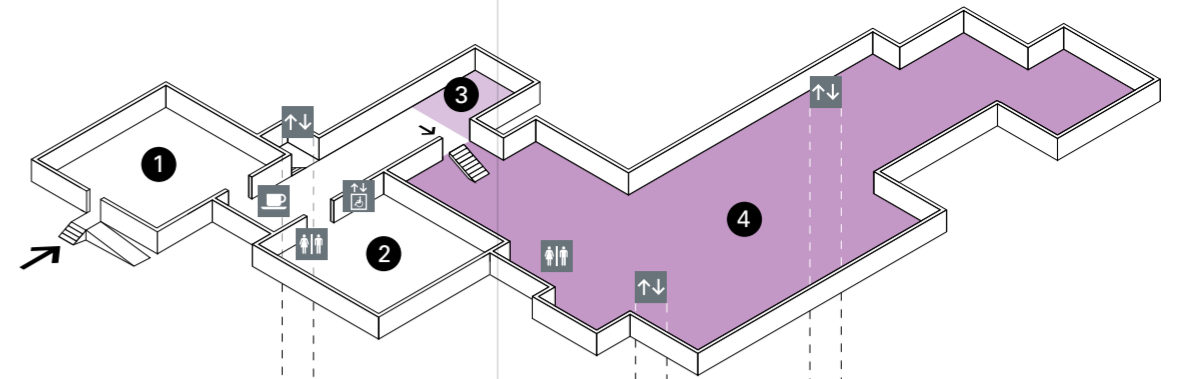
english

museum plan & information

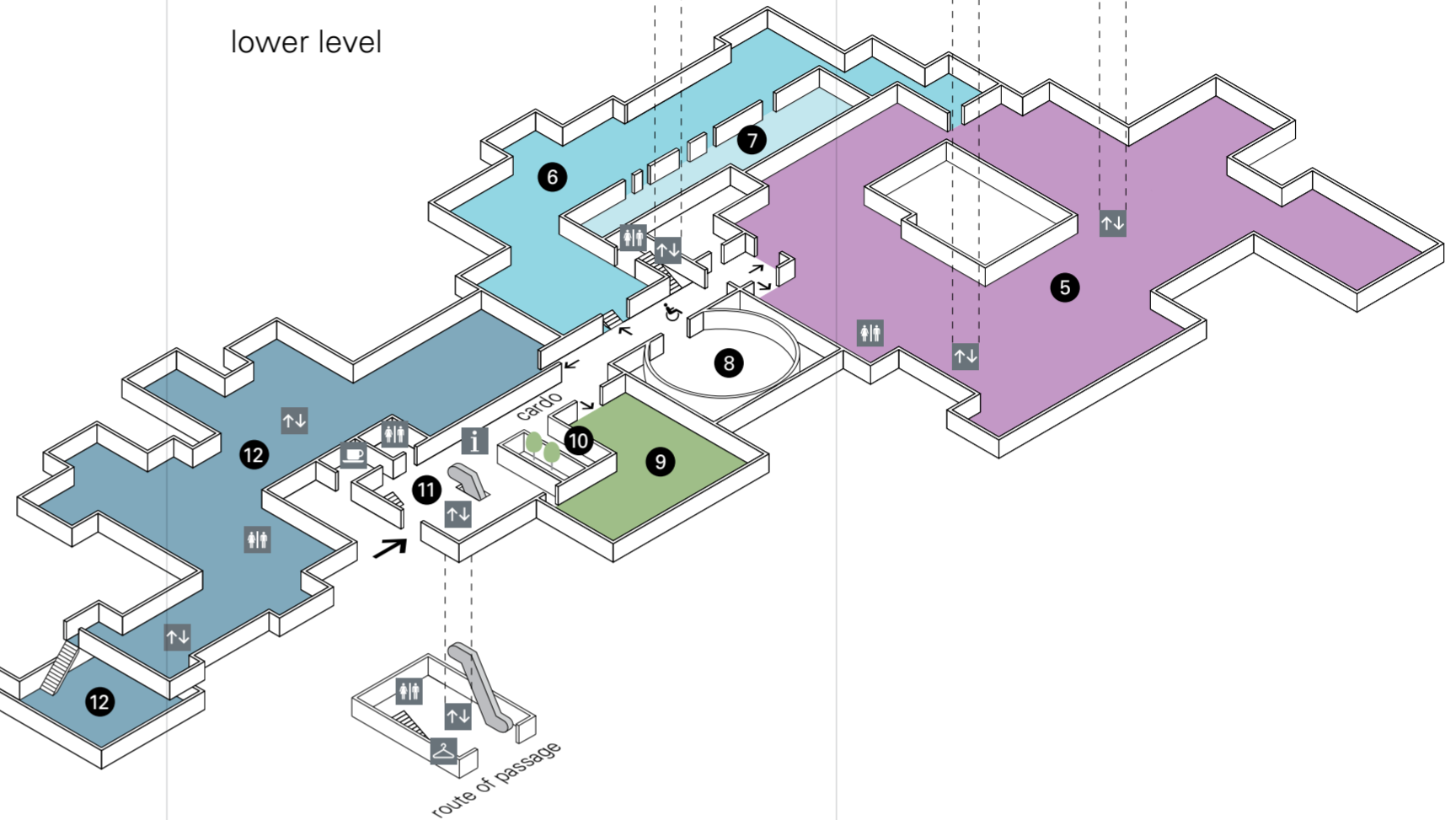
- 1 upper gallery entrance
- 2 library
- 3 focus gallery
- 4 contemporary art | design | photography prints and drawings
- 5 israeli art | modern art | old masters | asian art arts of africa, oceania, and the americas
- 6 jewish art and life
- 7 synagogues
- 8 auditorium
- 9 temporary exhibitions
- 10 shop
- 11 gallery entrance
- 12 archaeology
- 13 youth wing for art education
- building entrance
- gallery entrance
- restrooms (wheelchair accessible except in gallery 5)
- elevators
- information
- café | espresso bar
- cloakroom

gallery map

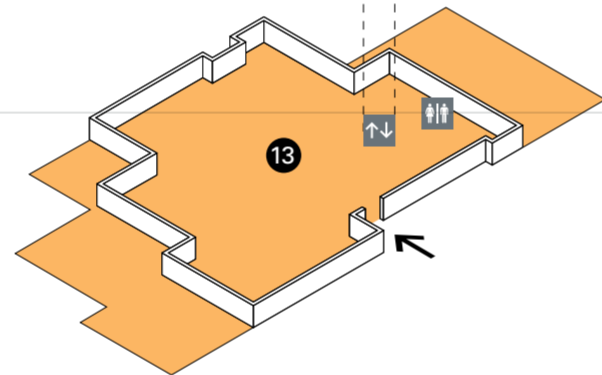
upper level



lower level



youth wing for art education



Please, no photography, cellular phones, or food and drink in the galleries!

Smoking is not permitted in any Museum buildings

Baby strollers are permitted, but not on escalators

Almost all galleries and facilities are wheelchair accessible

Please note that certain works may not be on view at all times; we regret any inconvenience to our visitors

Hours

Sunday, Monday,
Wednesday, Thursday 10 am – 5 pm
Tuesday * 4 pm – 9 pm
Friday and holiday eves 10 am – 2 pm
Saturday and holidays 10 am – 5 pm

* August: 10 am – 9 pm

The Israel Museum, Jerusalem

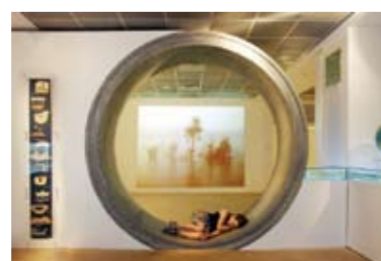
Ruppin Boulevard
Bus lines: 9, 17, 24
Tel.: +972 2 670 8811
Fax: +972 2 677 1332
Postal address: POB 71117
Jerusalem 91710
Email: info@imj.org.il
Website: www.imj.org.il

Photographs © The Israel Museum, Jerusalem, by Elie Posner and Peter Lanyi | © Timothy Hursley, courtesy The Israel Museum, Jerusalem

Design: Kasher Visual Communication

Ruth Youth Wing for Art Education

The Ruth Youth Wing houses exhibition galleries, art studios, classrooms, a library for illustrated children's books, a recycling room, an archaeological tell, and more. Every year its educators create a wide range of programs for children, teenagers, and adults, including teacher-training and special activities that foster understanding between Arab and Jewish students and reach out to the wide spectrum of Israeli society. Along with smaller temporary displays, the Youth Wing presents an annual theme exhibition for the entire family.



Bella and Harry Wexner Gallery

A centralized gallery for major temporary exhibitions is located at the heart of the renewed Museum, adjacent to the entrances to the Wings for Archaeology, Jewish Art and Life, and the Fine Arts. Comprising 10,000 sq. feet (930 sq. meters), the Wexner Gallery divides naturally into three equally scaled spaces and can host up to three exhibitions concurrently.



Jack, Joseph, and Morton Mandel Wing for Jewish Art and Life

The Wing for Jewish Art and Life presents the religious and secular culture of Jewish communities worldwide, from the Middle Ages to the present day. Its reconfigured, comprehensive display features five sections: The Rhythm of Life; The Synagogue Route (including synagogue interiors from three continents); The Cycle of the Jewish Year; Costume and Jewelry; and Illuminating the Script, highlights from the Museum's collection of illuminated manuscripts. The singular objects on view range from the Great Dress of a Moroccan bride to a Hungarian funeral carriage, from exquisite manuscripts like the Rothschild Miscellany to contemporary works of Jewish ritual art.



Edmond and Lily Safra Fine Arts Wing

The Fine Arts Wing reflects the far-reaching, interdisciplinary scope of the Museum's art collections, encompassing works of art from across the ages and around the globe: Old Masters; Modern Art; Contemporary Art; Israeli Art; the Arts of Africa, Oceania, and the Americas; Asian Art; Photography; Design and Architecture; and Prints and Drawings. The renewed and greatly expanded display is designed to inspire new insights into the arts of different times and places, as well as an appreciation of the common threads of human culture.



Samuel and Saidye Bronfman Archaeology Wing

The Israel Museum houses the most extensive holdings of biblical and Holy Land archaeology in the world. Its Archaeology Wing tells the story of the ancient Land of Israel – home to peoples of different cultures and faiths – using unique examples from its unparalleled collections. Organized chronologically, from prehistory to the Ottoman Empire, the transformed wing presents seven "chapters" of this archaeological narrative. Objects from neighboring cultures that have had a decisive impact on the Land of Israel are exhibited in adjacent galleries.

