

Pitt Meadows District Municipality

1	General
<p>Incorporated in 1914, Pitt Meadows has a total land area of 85.38 square km (2006 Census). The District is located on the north bank of the Fraser River between Port Coquitlam and Maple Ridge, and joined the Greater Vancouver Regional District in 1995.</p>	

2	Population Estimates				Age Distribution				
Annual Estimates					2006 Census			% Distribution, 2006 *	
Year	Pitt Meadows	% Change Prev. Year	BC	% Change Prev. Year	Pitt Meadows	Male	Female	Pitt Meadows	BC
2006	16,297	-	4,243,580	-	All ages	7,610	8,010	100.0	100.0
2007	16,584	1.8	4,309,632	1.6	0 - 14	1,465	1,535	19.2	16.5
2008	17,433	5.1	4,383,860	1.7	15 - 24	1,045	1,020	13.2	13.1
2009	17,939	2.9	4,460,292	1.7	25 - 44	2,235	2,330	29.2	27.4
2010	18,136	1.1	4,530,960	1.6	45 - 64	2,095	2,155	27.2	28.4
					65 +	770	970	11.1	14.6

Source: Statistics Canada (as of July 1, includes estimate of Census undercount)

* based on published totals, both sexes

2006 Census Profiles can be found on our Website at <http://www.bcstats.gov.bc.ca/census.asp>

3	Selected Census Characteristics						
			Pitt Meadows			British Columbia	
Characteristics	2001	2006	% Change	% Change	2001	2006	
Population	14,670	15,623	6.5	5.3	3,907,738	4,113,487	
Population (by citizenship)	14,660	15,610	6.5	5.3	3,868,875	4,074,385	
Non-immigrant	11,720	12,235	4.4	2.9	2,821,870	2,904,240	
Immigrant	2,880	3,240	12.5	10.8	1,009,820	1,119,215	
Labour force (15+ yrs.)	8,230	8,985	9.2	8.1	2,059,950	2,226,380	
Employees	7,140	7,760	8.7	9.2	1,715,600	1,873,050	
Self-employed	955	1,085	13.6	7.4	291,455	313,000	
Participation rate [ppt.=percentage points]	71.5%	71.1%	-0.4 ppt.	0.4 ppt.	65.2%	65.6%	
Unemployment rate	6.5%	4.5%	-2.0 ppt.	-2.5 ppt.	8.5%	6.0%	
Total population 25 to 64 years	8,090	8,845	9.3	6.5	2,144,050	2,284,465	
No certificate, diploma or degree	1,925	905	- 53.0	- 40.1	471,470	282,200	
High school certificate or equivalent	1,790	2,840	58.7	27.7	462,925	591,275	
Apprenticeship/trades certificate or diploma	1,445	1,230	- 14.9	- 7.4	295,180	273,450	
College, CEGEP or other cert. or diploma	1,810	1,985	9.7	11.3	401,760	447,005	
University certificate, diploma or degree	1,120	1,880	67.9	34.7	512,715	690,535	
Bachelor's degree	695	865	24.5	23.0	282,800	347,715	
Census families	4,195	4,565	8.8	6.9	1,086,030	1,161,420	
Lone-parent families	600	570	- 5.0	4.0	168,420	175,165	
Households	5,300	5,820	9.8	7.1	1,534,335	1,643,150	
1-family households	4,075	4,280	5.0	6.1	1,012,925	1,074,850	
Multi-family households	55	135	145.5	18.4	35,050	41,510	
Non-family households	1,175	1,400	19.1	8.3	486,355	526,785	
Median Income (2000 & 2005)	\$ 26,920	\$ 30,111	11.9	12.5	\$ 22,095	\$ 24,867	
Males	\$ 35,506	\$ 40,370	13.7	9.0	\$ 28,976	\$ 31,598	
Females	\$ 20,154	\$ 22,317	10.7	14.0	\$ 17,546	\$ 19,997	
Median Family Income (2000 & 2005)	\$ 63,889	\$ 78,024	22.1	20.0	\$ 54,840	\$ 65,787	
Economic Families	4,150	4,485	8.1	6.5	1,044,850	1,112,810	
2001 Incidence, low income 2006 Prevalence, low income	11.0%	9.7%	-1.3 ppt.	-0.6 ppt.	13.9%	13.3%	
Unattached persons, 15+	1,385	1,555	12.3	4.7	576,825	603,880	
Incidence, low income	37.5%	31.8%	-5.7 ppt.	-1.4 ppt.	38.1%	36.7%	
Population in private hh.	14,630	15,550	6.3	5.1	3,785,270	3,978,215	
Incidence, low income	12.7%	12.0%	-0.7 ppt.	-0.5 ppt.	17.8%	17.3%	
Dwellings	5,305	5,820	9.7	7.1	1,534,335	1,643,150	
Owned	4,075	4,740	16.3	12.5	1,017,485	1,145,045	
Rented	1,225	1,080	- 11.8	- 3.6	512,360	493,995	
Average gross rent	\$ 736	\$ 770	4.6	10.4	\$ 750	\$ 828	
Average owners' payments	\$ 1,029	\$ 1,172	13.9	17.1	\$ 904	\$ 1,059	
Avg. value, owned dwell.	\$ 206,642	\$ 383,128	85.4	81.5	\$ 230,645	\$ 418,703	

Source: Statistics Canada. Notes: incomes are for 2005 and 2000; rent/owner's payments are restricted to non-farm, non-reserve private dwellings.

Pitt Meadows District Municipality

4		Labour Force by Industry (NAICS)					
		Pitt Meadows			BC	% Distribution, 2006	
Industry		2001	2006	% Change	% change	Pitt Meadows	BC
Total labour force		8,230	9,080	10.3	8.1	100.0	100.0
Industry - Not applicable		110	120	9.1	-26.6	1.3	1.5
All industries (Experienced LF)		8,120	8,960	10.3	8.9	98.7	98.5
111-112 Farms		335	275	-17.9	5.2	3.0	1.8
113 Forestry and logging		45	15	-66.7	-10.0	0.2	1.0
114 Fishing, hunting and trapping		10	-	-100.0	1.3	-	0.2
1151/2 Support activities for farms		-	-	-	11.3	-	0.1
1153 Support activities for forestry		10	10	-	-21.5	0.1	0.3
21 Mining and oil and gas extraction		20	70	250.0	42.6	0.8	0.9
22 Utilities		45	30	-33.3	-3.4	0.3	0.5
23 Construction		570	655	14.9	39.9	7.2	7.5
31-33 Manufacturing		905	980	8.3	-2.7	10.8	8.5
311 Food manufacturing		70	80	14.3	3.6	0.9	1.0
321 Wood product manufacturing		160	125	-21.9	-16.1	1.4	1.7
322 Paper manufacturing		40	30	-25.0	-13.5	0.3	0.6
41 Wholesale trade		480	550	14.6	11.6	6.1	4.1
44-45 Retail trade		820	995	21.3	6.9	11.0	11.2
441 Motor vehicle and parts dealers		60	160	166.7	9.0	1.8	1.1
445 Food and beverage stores		250	225	-10.0	8.4	2.5	2.9
448 Clothing & clothing accessories		65	125	92.3	9.2	1.4	1.1
452 General merchandise stores		100	100	-	6.5	1.1	1.2
48-49 Transportation & warehousing		510	465	-8.8	0.6	5.1	5.2
51 Information and cultural industries		245	315	28.6	-5.3	3.5	2.6
52 Finance and insurance		255	300	17.6	4.5	3.3	3.8
53 Real estate & rental/leasing		140	185	32.1	22.1	2.0	2.3
54 Prof'sonal, scientific & tech. serv.		410	580	41.5	18.6	6.4	7.3
55 Mgmt. of companies/ent'prises		-	15	-	126.6	0.2	0.1
56 Admin+support, waste mgmnt srv.		295	385	30.5	20.4	4.2	4.4
61 Educational services		470	540	14.9	9.2	5.9	6.9
62 Health care and social assistance		930	785	-15.6	6.5	8.6	9.6
71 Arts, entertainment and recreation		190	165	-13.2	11.3	1.8	2.3
72 Accommodation and food services		645	630	-2.3	7.7	6.9	8.1
721 Accommodation services		90	85	-5.6	2.5	0.9	1.7
722 Food services & drinking places		555	545	-1.8	9.2	6.0	6.4
81 Other services (excl. public admin.)		375	410	9.3	11.8	4.5	4.9
91 Public administration		430	580	34.9	-2.0	6.4	5.0
Special Aggregations	Agriculture, Food and Beverage	415	365	-12.0	5.8	4.0	2.9
	Fishing and Fish Processing	10	10	-	-3.3	0.1	0.5
	Logging and Forest Products	250	180	-28.0	-14.7	2.0	3.7
	Mining and Mineral Products	200	285	42.5	17.1	3.1	2.1

Source: Statistics Canada. Industry according to NAICS version used in each census. Unpublished data.

5		Business Locations- Number of Firms by Employment Size Range								
		Firms with no employees		Firms with employees		% change	Vancouver CMA			
		Vancouver CMA	BC	Vancouver CM	BC	Vancouver CMA	1 to 19	20 to 49	50-199	200 Plus
2008		103,353	185,879	91,322	175,003	-	80,505	6,826	3,314	677
2009		103,517	186,541	92,331	176,124	1.1	81,519	6,862	3,284	666
2010		108,370	194,349	92,053	175,913	-0.3	81,190	6,992	3,224	647

Source: Business Register, Statistics Canada. In some areas, boundary changes/geocoding changes may cause large changes.

6		Municipal Residential Taxes and Charges on a Representative House					
		Pitt Meadows					
		House Value		Taxes & Charges			
Year	\$	% change	\$	% change			
2006	303,455		2,776				
2007	363,163	19.7	3,457	24.5			
2008	418,342	15.2	3,069	-11.2			
2009	420,616	0.5	3,377	10.0			
2010	417,356	-0.8	3,503	3.7			

Source: Ministry of Community Development http://www.cd.gov.bc.ca/lgd/infra/statistics_index.htm (No RD level figures)

Pitt Meadows District Municipality

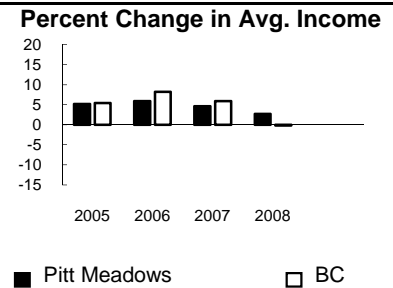
7 Values of Building Permits									
Year	Residential				Non-Residential		Total		Year
	Number of Units		Value \$'000		Value \$'000		Value \$'000		
	Pitt Meadows	BC	Pitt Meadows	BC	Pitt Meadows	BC	Pitt Meadows	BC	
2006	292	38,835	45,726	7,620,696	7,101	3,920,836	52,827	11,541,532	2006
2007	219	40,932	29,915	8,611,723	2,446	3,932,968	32,361	12,544,691	2007
2008	319	30,110	64,630	6,899,289	10,335	3,677,866	74,965	10,577,155	2008
2009	34	18,607	6,270	4,491,075	11,978	3,138,810	18,248	7,629,885	2009
2010	10	28,942	2,949	6,701,313	16,521	3,008,506	19,470	9,709,819	2010

Source: Statistics Canada

Note: Detailed non-residential permits data can be found on our Website: www.bcstats.gov.bc.ca

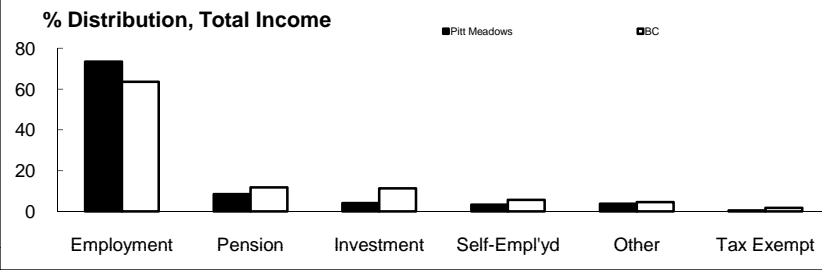
A dash can indicate a nil report, a value of less than \$500, or non-reporting. P indicates 'preliminary'.

8 Personal Taxation Statistics							Percent Change in Avg. Income	
Total Income of All Returns								
Year	All Returns (number)		Average Income (\$)		% Change avg. income			
	Pitt Meadows	BC	Pitt Meadows	BC	Pitt Meadows	BC		
2004	11,060	3,053,420	35,045	33,766	n/a	n/a		
2005	11,510	3,154,090	36,847	35,601	5.1	5.4		
2006	11,740	3,165,750	39,029	38,523	5.9	8.2		
2007	12,670	3,287,750	40,825	40,802	4.6	5.9		
2008	13,190	3,383,640	41,933	40,736	2.7	-0.2		



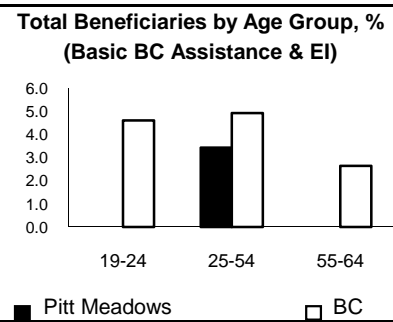
Taxation data available at: <http://www.bcstats.gov.bc.ca/data/dd/income.asp>

Source of Total Income 2008				% Distribution, Total Income					
	Pitt Meadows		BC						
	\$Thousands	% of Total		% of Total					
Employment	406,359	73.5	63.5						
Pension	47,259	8.5	11.9						
Investment	22,682	4.1	11.4						
Self-Employed	18,222	3.3	5.7						
Other	20,880	3.8	4.5						
Tax Exempt	2,461	0.4	1.9						
Total	553,099	100.0	100.0						



Source: Canada Revenue Agency. Areas are defined by postal codes and may not match municipal boundaries.

9 Dependency on the Safety Net							Total Beneficiaries by Age Group, % (Basic BC Assistance & EI)	
Percentage of Population by Age Receiving Benefits - September 2009								
Age Group	BC Basic* Income Assistance Recipients (%)		Employment Insurance Beneficiaries (%)		Total of BC Basic Income Assistance & EI Beneficiaries (%)			
	Pitt Meadows	BC	Pitt Meadows	BC	Pitt Meadows	BC		
Under 19	1.6	2.7	-	-	-	-		
19-24	-	2.1	2.7	2.6	-	4.6		
25-54	0.9	1.9	2.6	3.1	3.4	4.9		
55-64	-	0.7	1.9	2.0	-	2.6		
19-64	0.8	1.7	2.5	2.8	3.2	4.4		



* On temporary assistance only. Excluded are those on Continuous Assistance, aboriginals living on reserve, seniors/OAS, & children living with relatives.

Source: BC Stats (using administrative files from the BC Ministry of Housing & Social Development, and Human Resources & Social Development Canada)

Note: EI Beneficiaries reports now include regular, fishing and employment benefits, work sharing and support measures. The reports exclude sickness, maternity and parental benefits.

10 Business Formations and Failures									
Incorporations				Bankruptcies					
Year	Number		Year	Vancouver CMA		Mainland/Southwest DR		BC	
	Pitt Meadows	BC		Business	Consumer	Business	Consumer	Business	Consumer
2006	74	33,273	2005	314	3671	n.a.	n.a.	786	8,168
2007	92	34,036	2006	230	3332	281	3,931	585	7,020
2008	94	30,085	2007	201	3091	230	3,653	470	6,651
2009	74	26,431	2008	161	3361	187	3,985	454	7,293
2010	87	30,305	2009	181	4686	219	5,638	380	10,639

Source: BC Ministry of Finance

Source: Office of the Superintendent of Bankruptcy, Government of Canada

Incorporations are counted in municipality of the registered office address which may differ from the actual business location.

Note: Bankruptcy is by urban postal code forward sortation area and is counted where it is filed.