

2004 Allendale Historical Recognition Plan

Prepared for the
Allendale Charter
Township Board
6676 Lake Michigan Dr.
Allendale MI 49401

PLAN PROFILE

Planning Cycle: 5 years

Contact Information: Candy Kraker, Township Clerk
Allendale Charter Township
6676 Lake Michigan Dr.
Allendale MI 49401
616-895-6295, ext. 6
616-895-6330 fax
candy@allendale-twp.org

ACKNOWLEDGEMENTS

The 2004 Allendale Charter Township Historical Recognition and Preservation Plan was approved by the Allendale Charter Township Board on _____.

The development of this plan was a cooperative effort by the Allendale Charter Township Board, Planning Commission, Historical Recognition Committee, Township staff and Township residents.

Members of the Allendale Charter Township Historical Recognition Committee are:

Candy Kraker, Chairperson

Kathy Antuma, Deputy Clerk

Cliff and Rachel Cole, Allendale Historical Society

Pat Gemmen, Allendale Historical Society

Richard Ponshair, Allendale Historical Society

Jim Beelen, Township Supervisor

Philip Brummel, Planning and Community Development Director

Angie Barksdale, Youth Programming Director

Carl Jesser, Planning Commission

INDEX

Introduction	Page 6-10
Purpose of the Plan	
Plan Development Strategies	
Benefits of Historical Preservation	
Preservation as a Public Policy	
Issues, Threats and Opportunities	
Charge of the Committee	
Area included in the Plan	
Community Description	
Goals and Objectives	Page 11
Planning Process	Pages 12-29
Historic People	
Historic Communities	
Historical Events	
Historical Military Information	
Action Plan	Pages 30-37
Identification of Historic Structures, Places, Personalities and Events	
Public Awareness	
Architecture	
Architectural Styles of Residential Structures, Existing and No Longer Existing	
Architectural Styles of Commercial Structures, Existing and No Longer Existing	
Architectural Styles for New Residential Structures	
Architectural Styles for New Commercial Structures	
Identification of Structures in Danger of Future Development	
Policies to Protect and Enhance History	

INDEX (continued)

- Exhibit A Architectural Styles of Residential Structures, Existing and No Longer Existing
- Exhibit B Architectural Styles Already Used in Allendale and Used in Surrounding Areas that could be used for New Residential Structures
- Exhibit C Architectural Styles of Commercial Structures, Existing and No Longer Existing

INDEX (continued)

- Reference #1 Allendale Township: 150 Years
- Reference #2 Allendale Charter Township 1996 Master Land Use Plan
- Reference #3 2000 Census
- Reference #4 Reflections of Ottawa County 1837-1987
- Reference #5 Memorials of the Grand River Valley by Franklin Everett, 1878
- Reference #6 Nineteenth-Century River Landing Settlements in the
Grand River Valley, Ottawa County, Michigan by
Donald W. Linebaugh, 1982
- Reference #7 Historic Grand Haven and Ottawa County, by Leo C. Lillie, 1931
- Reference #8 Bass River Community 1865-1936, 1989

INTRODUCTION

Purpose of the Plan

The arrival of the new millennium presents a unique opportunity to take stock of who we were and what we want to carry into the 21st century. Testaments to our community's history can be found throughout Allendale Charter Township (the "Township"). Unfortunately, many of the historical elements are deteriorating and are in danger of being lost forever. These treasures urgently require conservation and preservation to survive into the next millennium. To focus public attention on the importance of our community's heritage and the need to save our treasures at risk, the Allendale Charter Township Board (the "Township Board"), in May of 2003, approved of the concept of appointing a Historical Recognition Committee (the "Committee"). One of the charges of this Committee is to prepare an Allendale Historical Recognition Plan (the "Plan"). The purpose of the Plan is to establish the legal basis for the creation of local historical safekeeping. Historical data about the Township has been collected, analyzed, summarized and presented in this report in a clear and concise manner to illustrate its historic significance. This report justifies why local historical structures, places, personalities and events should be memorialized and how that should take place. This study encompasses the entire Township.

This report serves as a source of information for a variety of audiences, including:

- The Township Board, Planning Commission, a variety of other Township committees, and the Historical Recognition Committee as they fulfill their duties.
- Planners and consultants when decisions on development projects and studies are made within the community.
- Teachers and others in the community interested in using the information to create educational programs about the community's heritage.

It is one thing to read about our history in books. It is another to understand our history by seeing it, walking through it, and experiencing it first hand. Our community's historic structures, original documents, works of art and authentic artifacts inspire us as nothing else can. To help ensure that future generations will have opportunity to experience our past and understand our identity as a community, the goals of the Plan are:

- To protect, preserve and enhance the distinctive architectural and cultural heritage of the community.
- To educate our residents on the importance of preserving buildings, sites, objects and documents that represent the community's cultural legacy.
- To foster pride in our community's heritage.
- To encourage harmonious, orderly and efficient growth and development of the community.
- To strengthen the local economy and improve local property values.
- To raise concern for urgent preservation needs.
- To stimulate broad-scale involvement including securing necessary resources and support.
- To promote tourism..

INTRODUCTION

Purpose of the Plan (continued)

It is the hope of the Committee that by encouraging the style, form, proportion and material of our historic buildings in new construction design and those of contemporary design, the Township's historic architecture will continue to be a distinctive aspect of the Township and will serve as visible reminders of the historical and cultural heritage of the community.

Plan development strategies

The strategies to develop the plan are as follows:

- Appoint a Historical Recognition Committee.
- Have a Plan prepared by the Historical Recognition Committee.
- Review and approval of the Plan by the Township Planning Commission.
- Review and approval of the Plan by the Township Board.
- Review and update the Plan. The plan will be reviewed and revised every five years. The Committee's activities will be subject to public monitoring and comment. Future comments regarding the Plan will be retained on file and considered when revisions are formally undertaken.

Background for Forming the Historical Recognition Committee

Allendale's heritage is rich and varied. Historic places, landmarks, personalities, events, etc., are links to the past that provide meaning to the present and continuity to the future. Many historic buildings have already been lost to new development, and are only preserved in pictures and memories of the older community residents.

As the Township continues to develop, the danger of losing a sense of our community's history becomes more and more of an issue. In an attempt to preserve some of the historical aspects of Allendale, the Township Board has recognized that a concerted effort needs to be made now to organize a Historical Recognition Committee.

Benefits of Historical Preservation

The benefits of preserving a community's history are many, including the facts that:

- Historic preservation is the identification, evaluation, conservation and use of historic properties so that they continue to play an integral, vibrant role in the community.
- Preserving historic properties contributes directly to the quality of life in the community.

INTRODUCTION (continued)

Benefits of Historical Preservation (continued)

- Historic sites make the community attractive to visitors and newcomers, create a sense of pride and well-being among community members, and provide an opportunity for enriching the education of our youth.
- Historic preservation is a powerful tool for economic revitalization that generates jobs and attracts tourists and investors.
- Our history tells about who we were and where we came from.

Preservation as a Public Policy

Historic resources contribute vital cultural benefits to the community. They provide information about Allendale history that adds to our understanding about ourselves.

Preservation is much more than nostalgia. Preservation means the careful conservation and wise use of historic properties to provide a legacy for future generations. Our descendants have a right to know and understand their past, and their right creates an obligation for the current generation to responsibly preserve historic properties.

This basic philosophy became national policy in the 1966 National Historic Preservation Act. This legislation provides a uniform framework within which stronger federal, state, and local initiatives could take place, assisted by funds made available through the federal program.

“The spirit and direction of the nation are founded upon and reflected in its historic heritage; the historical and cultural foundations of the nation should be preserved as a living part of our community life and development in order to give a sense of orientation to the American people.”

The Preamble of the National Historic Preservation Act

Issues, Threats and Opportunities

There are many and varied issues and threats related to preserving a community’s history, some of which are:

- Few people are aware of the value of historic resources and the opportunities and benefits of historic preservation.
- While the Allendale Historical Society has done an outstanding job of collecting data, documentation of the township’s history is still incomplete.
- Township development is moving at a fast pace.
- There are insufficient economic incentives to preserve historic resources.
- More funds are needed for effective preservation program.

INTRODUCTION (continued)

Issues, Threats and Opportunities (continued)

While obstacles exist, there are also many opportunities, such as:

- A tremendous resource in the Allendale Historical Society.
- The community seems to be receptive to the need for preserving history.
- The Township Board, staff and Planning Commission are supportive of efforts to direct development in harmony with history.

Charge of the Committee

Some of the goals of this committee are to:

- Identify historical structures, places, personalities, events, etc., and give a background and rationale for recognition.
- Make recommendations as to how history should be recognized.
- Increase public awareness.
- Provide guidelines for architectural styles for future buildings, complementing existing historical structures and historical concepts.
- Identify historic structures in danger of proposed developments.
- Make recommendations as to demolition or relocation of historic structures.
- Provide guidelines for establishing policies, regulations and ordinances that protect and enhance history.
- Provide incentives to encourage historic recognition.

The “Allendale Historical Recognition Plan” is a plan intended to help direct the future development of Allendale. This is a plan that should be updated every five years in order to retain its validity as a working document.

Area included in the Plan

The entire geographic area of the Township is included in this Plan.

Community Description

Allendale Charter Township is located in the center of Ottawa County, between Grand Rapids on the east, Holland and Grand Haven on the west, Jenison and Hudsonville on the south, and Coopersville on the north. Allendale is located on M-45, a major transportation route between Grand Rapids and Lake Michigan.

Grand Valley State University (the “University”) is located in the Township. The University has grown greatly since its beginning in 1963. The community has experienced growth related

INTRODUCTION (continued)

Community Description (continued)

to the University's development. The growth of the Grand Rapids metropolitan area has made Allendale an attractive suburban community for many who work in Grand Rapids.

Allendale Charter Township, one of the fastest growing communities in West Michigan, is diverse and in the midst of economic, cultural, and demographic change. Tension between the desire for new development and the desire to conserve is always present. At the same time, the interest in preservation has grown and broadened, as has the concept of what should be preserved.

Twenty-five years ago, Allendale Charter Township was predominantly a rural community. As Allendale continues to develop, the character, economy and population of the Township have become much more diverse, ranging from urban to rural. A significant manufacturing component has been added to the Township's economic base. The population has more than tripled since 1970, and local residents are served by a more complete range of commercial goods and services.



In addition, the main campus of Grand Valley State University, one of west Michigan's major public universities, has evolved from a small cluster of buildings to a campus of approximately 700 acres, with a total enrollment for the 2003-2004 academic year was 21,524 students.

Allendale currently is a service center for the surrounding agricultural and suburban areas and has begun to be a service community for the University as well. A number of residents are students, faculty and staff at the University, also, many residents commute to work in surrounding communities. The 2000 Township census shows a population increase of 62%, from 8,022 in 1990 to 13,042 in 2000. It is expected that the Township will continue to experience this amount of growth over the next decade.

The soils and topographic conditions in Allendale are generally suitable for most types of urban development. This is another factor in the desirability of the area as a suburban/residential location. The Grand River also is an important natural resource impacting the residential growth in the area. It forms the north and east boundaries of the Township and, as efforts to improve the environmental quality of the river are more successful, it will become a major attraction for recreational and residential development.

While some of the residential development is related to the University's growing need for student housing, faculty and staff housing, and housing for service/retail workers, the majority of the growth is related to the growth of the Grand Rapids metropolitan area.

GOALS AND OBJECTIVES

Goals and Objectives of this Plan are to:

- Identify historical structures, places, personalities, and events, etc., and give a background and rationale for recognition.
- Make recommendations as to how these structures, places, personalities, events, etc. should be historically recognized.
- Increase public awareness.
- Provide guidelines for architectural styles for new construction
- Identify historic structures in danger of future developments.
- Provide guidelines for demolition or relocation of historic structures.
- Establish zoning policies, regulations and ordinances that protect the historical nature of the Township, while allowing expeditious review of projects, avoiding unreasonable delays through clear and concisely written guidelines.
- Provide incentives to encourage historical preservation.

Allendale Charter Township is under tremendous development pressure. For the most part, development is inevitable, for some even desirable. But the destruction of community character and natural resources that too often accompany growth is not desirable. Development should not spell doom to the community and its surroundings. New developments must respect the complexion of the community. New buildings can be designed and sited so that they fit into a neighborhood.

PLANNING PROCESS

Historic People

- The family history of the Chippewa people living in Michigan goes back hundreds of years before the Europeans came. The Chippewa tribe consisted of the Odawa (Ottawa), Potawatomi, and Ojibway. Historical events that happened to the Indian families in Michigan happened to the Indian families in Allendale. Along the banks of the Grand River were villages near the mouth of the Bass River, Traders Creek and Ottawa Creek.
- Pierre Constant—Pierre Constant, a French fur trader hired by the British Fur Company, arrived in Allendale and established a trading post to buy furs from the Indians. Pierre did what many other fur traders did to cultivate friendships with the Indians; he married an Indian woman. The furs Pierre obtained were used by the European fashion industry.
- Rev. William and Amanda Ferry—In 1823, Rev. William and Amanda Ferry left their Massachusetts home to begin missionary work among the Indians, which lasted for twelve years. Their missionary work brought them to Indian villages in areas that later were called Bass River Community, Charleston, and Blendon Landing.
- Hiram and Ella Knowlton—Just prior to the Civil War, Hiram was a hired hand at a farm in Allendale. In August of 1862, Hiram enlisted in the 5th Michigan Cavalry, which became part of the “Michigan Brigade”. He arrived in Washington DC in the fall of 1862. Hiram was captured several times while in service. He took part in the fighting in the Shenandoah Valley in 1864. He was mustered out in the summer of 1865. Upon returning home to Allendale, Hiram married Emma Fellows, and they adopted five children. In 1906, they purchased property in Allendale and built their new house on 68th Avenue in 1911. Hiram and Emma are both buried in the Allendale Cemetery. Their home has been restored by the Allendale Historical Society and is now known as the Knowlton House Museum.
- Dr. William Presley was Allendale’s first resident doctor. In the early days, a doctor kept office hours to some extent, but the main task was to go into the homes to deliver babies, pull teeth, amputate limbs and watch long hours with the desperately ill or dying. Such was the case for Dr. Presley, who practiced in Allendale from 1900 to 1909. He lived on 68th Avenue, just south of Lake Michigan Drive. He once saved a man’s life with a delicate bone operation, which later was cited as an example of bone surgery at its best.
- James, Robert and Alexander Scott—The Scott name has been a part of the Township’s history since the 1840s. In 1845, James, Robert and Alexander settled in the Township, originally immigrating from Scotland. The Scott brothers helped organize the Township and James served as the first Township Clerk.

PLANNING PROCESS (continued)

Historic People (continued)

- Thomas Jones—Thomas Jones came to Allendale in 1843. He served as Allendale’s first post master, operating out of the Richard and Rebecca Roberts’ home in what was then known as Charleston. He purchased property located at what is now 11818 68th Avenue, and his house still stands at that location. He kept a “Halfway House” for travelers who used the Stagecoach Road, which was located next to their property and ran from Grandville to Grand Haven.
- Johnson and Doriza Balcom—Johnson Balcom and his wife, Doriza, came to Michigan from Vermont sometime in the late 1830s and moved to Allendale in the 1840s. He is listed as one of the founding persons in the early records of the Township. He is also listed as one of the charter founders of the Wesleyan Methodist church, the first church in Allendale.
- Alexander Milne—Alexander Milne was born in Scotland and immigrated to the United States, where he lived in New York City for some time. While in New York, he married Margaret Scott. They moved to Allendale in 1845, to join her two brothers who already lived in the Township. Alexander served as the second Township Supervisor, from 1855 to 1860. He also served as Township Treasurer for approximately eight years.
- Gerrit H. and Emily Wolbrink built the first grocery store, or general store, in the Township in the community of Conger in 1866. His business continued until 1911. They also maintained a post office in this store, which was called G. H. Wolbrink Farmers Store. Both Gerrit and Emily are buried in the Allendale Cemetery.
- Charles Fox built a sawmill for Frank J. Fox and Company, which the community of Rusk developed around. Charles also served as postmaster for the community for 15 years.
- Agnes B. Allen—Mrs. Allen was the widow of Capt. Hannibal Allen, son of Ethan Allen of Revolutionary War fame. After Hannibal’s early death from yellow fever, Agnes moved to what is now Eastmanville to live near her sister. Agnes was the first person on the tax roll in the area from which Allendale Township would be carved. After redistricting of township lines, Eastmanville was made part of Polkton Township.



Wolbrink store circa 1880

“The town (Allendale) is one of capacities rather than a developed reality. The views on the river are fine; the land is good, and has a pleasing variety of surface; and the civilizing agents are at work. It is easy to see what it will be.”

Franklin Everett’s Memorials of the Grand River Valley, 1878

PLANNING PROCESS (continued)

Historic People (continued)

- Andrew J. White—Andrew J. White was the proprietor of White’s Store, a general store built at the Bass River community . Andrew became the community’s first post master in 1882, with the post office located in his store.
- Richard and Rebecca Roberts—Richard and Rebecca Roberts purchased the first land in the Township to be actually lived on by the owner. Their 160 acres was located at Charleston, where Pierre Constant’s trading post had been. They had seven children, and their oldest, Elizabeth, born in 1844, was the first child of European descent born in the Township.
- Grosvenor Reed—Grosvenor Reed was a Prosecuting Attorney for Ottawa County and lived in Charleston Landing. He served as the first Township Supervisor, a Justice of Peace, and a Highway Commissioner.

Historic Communities

- The family history of the Chippewa people living in Michigan goes back hundreds of years before the Europeans came. The Chippewa tribe consisted of the Odawa (Ottawa), Potawatomi, and Ojibway. Historical events that happened to the Indian families in Michigan happened to the Indian families in Allendale. Along the banks of the Grand River were villages near the mouth of the Bass River, Traders Creek and Ottawa Creek.
- Allendale Center—This area developed around the intersection of Lake Michigan Drive and 68th Avenue. Gradually, a village began to emerge. A school, church, grange hall, grocery store with a post office, carpenter shop, blacksmith shop, grist mill, sawmill, town hall and several homes were built in this area.
- Pearlline—The cluster of homes, farms and businesses that developed around the corner of Lake Michigan Drive and 56th Avenue was named Pearlline. While businesses have remained in this area through the years, Pearlline was dissolved into the community of Allendale and the name was discontinued.



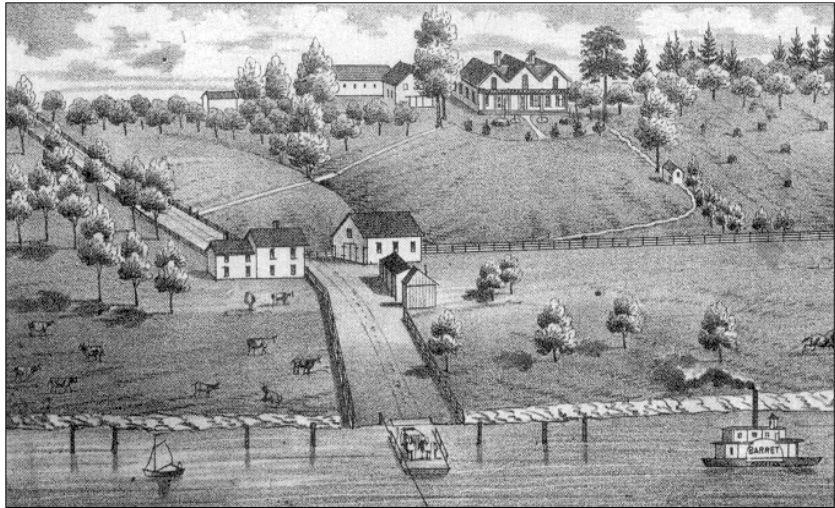
Pearline, 1910

PLANNING PROCESS (continued)

Historic Communities (continued)

- Trader's Creek—Pierre Constant, a French fur trader hired by the British Fur Company, arrived in Allendale and established a trading post to buy furs from the Indians. Pierre did what many other fur traders did to cultivate friendship with the Indians; he married an Indian woman. The furs Pierre obtained were used by the European fashion industry.

- Charleston—Charleston was a “paper city”. The area was purchased by speculators in 1836, and designed into a village on paper, with streets and lots. No lots were ever sold. In 1842, Richard and Rebecca Roberts purchased the first land in the Township to be actually lived on by the owner. Their 160 acres was located in Charleston, where Pierre Constant's trading post had been. Roberts built a log house that became a popular



Farm residence of Richard and Rebecca Roberts

- “tavern” stop on the trip between Grand Haven and Grandville. Eventually, Roberts built a 28 room house and the area grew into a small settlement with a sawmill, spoke shop, blacksmith shop, store, a storage house and carpenter shop.
- Blendon Landing— The village of Blendon Landing was located north of Lake Michigan Drive on property now owned by Grand Valley State University. The landing was located on the southwest bank of the Grand River, on a high bluff cut with deep ravines, near the mouth of Ottawa Creek. The community grew up as a result of the commercial activity of Blendon Lumber Company and existed from 1854-1880. At its peak, the community consisted of about two hundred people. The village contained a large boarding house, general store, school house, ice house, blacksmith shop, saloon and number of cabins. A steam engine tramway ran from Blendon Landing approximate eight miles to the town of Blendon. By the river, the a sawmill and shipyard provided work for the inhabitants of the village on the bluff. The Blendon Lumber Company provided logs used for the masts of ships. Around 1864, four schooners were built in the shipyard.

PLANNING PROCESS (continued)

Historic Communities (continued)

- Rusk—The settlement of Rusk was established in the late 1800's. The community grew up around a sawmill business. After the area timber was cut down, people stayed and farmed the land. Rusk also had a post office, church, cemetery and general store.
- Conger—About one and one-half miles south of Lake Michigan Drive, on what is now known as 64th Avenue, a small farming community known as Conger grew up. Conger was the site of the first full fledged grocery store, or general store, in the Township. The children of Conger attended the Brotherton School.
- Bass River Community—This community was located in the extreme northwest corner of the Township where Bass River empties into the Grand River. Bass River was originally platted as Warren City in 1837. The County Commissioners, in 1840, actually located the county seat at this “paper city” site, where only a few log houses had been erected. The actually community existed from around 1864-1936, although the first farm was established there in 1848 by George C. Rice. Bass River was larger than its neighbor, Allendale. A rich deposit of gravel was discovered under the farms, and as highways were being built across Michigan, the gravel was in great demand. In the mid-1920's, Construction Aggregates from Chicago began digging the gravel, and slowly purchased all of the farms in the area. Bass River was completely replaced by gravel pits, as it remains today.

“Not a stone nor a stick remains. No sign of a foundation exists to prove there once was a place called Bass River. ...Although mostly underwater, the original site lies at the end of an unimproved road off South Cedar Drive, which runs parallel to the Bass River. ...Jean Lowing Harter was born on one of the outlying farms, the Lowing place on 92nd Avenue and Buchanan Street. She remembers trekking 2 1/2 miles, each way, to the Bass River School and back, from the time she was 6 until it closed in 1936. ...times were hard. There was no electricity in Bass River, and winters were so cold that the children had to march around the schoolroom to keep warm. Often, snow closed the dirt roads, and parents picked up their kids in a horse drawn sleigh, with the horses wallowing belly deep in the snow.”

The Grand Rapids Press, January 1, 1989

PLANNING PROCESS (continued)

Events of Historical Significance

Hundreds of years ago—The family history of the Chippewa people living in Michigan goes back hundreds of years before the Europeans came. The Chippewa tribe consisted of the Odawa (Ottawa), Potawatomi, and Ojibway. Historical events that happened to the Indian families in Michigan happened to the Indian families in Allendale. Along the banks of the Grand River were a few Indian villages: at Blendon Landing, near the mouth of Trader’s Creek, and at Bass River.

1810—Pierre Constant, a French fur trader hired by the British Fur Company, arrived in Allendale and established a trading post to buy furs from the Indians. We are indebted to Wm. Ferry for the following short sketch of Pierre Constant:

“The first trader who located in what was Ottawa County, ...was Pierre Constant, a Frenchman, of the type of that advance guard of pioneers—Marquette, LaSalle, Joliet and Tonti—who, two hundred years before, invaded and brought to the world the great Northwest. He was of the chevalier order of men, brave, honorable and undaunted, amid all dangers. In 1810, he engaged with the British Fur Company...as a trader; and with his supply of merchandise coasted along the shore of Lake Michigan, and established a trading post on the Grand River, near what is now called Charleston; and another on the banks of Muskegon Lake. He married an Indian woman of remarkable beauty and intelligence, by whom six children were born to him. Once a year, he, with his family, and the results of his ventures in furs and peltries, coasted down Lakes Michigan and Huron to Penataquashin, the Indian depot for Upper Canada.”
Rev. Wm. Ferry, 1796-1867

1823—Rev. William and Amanda Ferry left their Massachusetts home to begin missionary work among the Indians, which lasted for twelve years. Their missionary work brought them to Indian villages in areas that later were called Bass River Community, Charleston, and Blendon Landing. In 1835 Rev. Ferry applied to Washington DC to have a post office created at a site in Grand Haven.

“Rev. Ferry was a man of medium height. He was a rather quiet, taciturn gentleman, more inclined to listen than to talk. Simple in his habits and tastes, he made no display of wealth, was strong in purpose, and persevering in his course. The influence of Amanda Ferry was second to none. She was a woman of uncommon intellectual and moral worth and was dearly loved and respected by all with whom she came in contact.”
Historic Grand Haven and Ottawa County by Leo C. Lillie, 1931

PLANNING PROCESS (continued)

Events of Historical Significance (continued)

Late 1820's—An Indian reservation was established where Trader's Creek flows into the Grand River. This reservation had been established by treaty between the Chippewa Nation and the United States government. It allowed the Chippewa people to reside there for not more than five years, at which time they were required to move.

1830's—Timber becomes a commodity as the Grand River provided early Allendale pioneers with a way to transport wood to markets where the wood could be converted into cash. Some early residents paid for their newly purchased property with wood. Hardwood trees were converted into cordwood and shipped to Grand Haven to fuel steam boats operating on Lake Michigan. Cordwood from Allendale heated homes and businesses in such faraway places as Grand Rapids, Grand Haven and Chicago.



Sawmills were in operation until the late 1800's

1830—The Indian Removal Act of 1830 was enacted into law during President Andrew Jackson's administration. The law had a traumatic effect on all Indians living in Allendale. They were forced to leave, to walk, in what became known as "The Trail of Death" to Indian Territory in Oklahoma and Kansas. Even today, there are many Michigan Chippewa in Indian Territory in Kansas who consider Michigan to be their homeland.

1835-1895—The period of time that river landing settlements developed along the Grand River Valley encompassed about 60 years. This river landing period is closely associated with the development and decline of the lumbering industry and with river and rail transportation.

1836—At this point in history, the land was, for the most part, purchased for its pine and held by speculators and non-residents. In 1836, speculators purchased the trading post land and platted the Village of Charleston. The speculators designed a village on paper, drew in streets and lots, and then proceeded to try to sell the lots. No lots were ever sold.

1837—The steamboat, the "Governor Mason", was the first steamboat to travel the Grand River between Grand Rapids and Grand Haven. The boat was 84 feet long, 15 feet wide, and weighed 53 tons.

PLANNING PROCESS (continued)

Events of Historical Significance (continued)

1842—Richard and Rebecca Roberts purchased the first land in the Township to be actually lived on by the owner. Their 160 acres was located in Charleston, where Pierre Constant's trading post had been. Roberts built a log house that became a popular "tavern" stop on the trip between Grand Haven and Grandville. Eventually, Roberts built a 28 room house and the area grew into a small settlement with a sawmill, spoke shop, blacksmith shop, store, a storage house, carpenter shop, and various cabins. For several years they kept a place of shelter and retreat for weary travelers. They had seven children, and their oldest, Elizabeth, born in 1844, was the first child of European descent born in the Township.

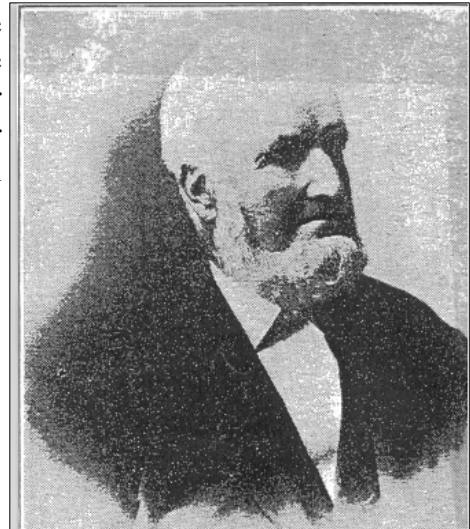
1844—The first road from Grand Haven to Grandville, called the Stagecoach Road, was cut through the forest of Allendale by Ephraim Pierson. It ran on an angle, which enabled travelers to follow the shortest route.

1846—Agnes Allen, the widow of Capt. Hannibal Allen, son of Ethan Allen, was the first person on the tax roll. After Hannibal's early death from yellow fever, Agnes moved to what is now Eastmanville to live near her sister. At that time, the area of Eastmanville belonged to Allendale Township, however, now it is part of Polkton Township.

1849—The area became an organized Township, with the assistance of Senator Henry Pennoyer of Grand Haven. The pioneers chose to name the Township "Malta", however Senator Pennoyer changed the name to the Allendale, after Agnes Allen. Act 84, Public Acts 1849, approved on March 15, 1849, provides the following:

"Sec. 15. That all that part of the county of Ottawa, known as towns five and six, and all that portion of town seven north of range fourteen west, (lying south of Grand river), be organized into a separate township, to be called and known by the name of Allendale, and the first townships meeting shall be held at the house of Richard Roberts, in said township."

1849—The Little Red School House was built, which was the first school in the Township. It was a one room building, situated along the east side of the Stagecoach Road. The first few years the school year was only a three month term.



Henry Pennoyer
First Sheriff of Ottawa County
Elected to office in 1838

PLANNING PROCESS (continued)

Events of Historical Significance (continued)

1850's—Canoes and pole boats more or less ceased to exist in the late 1850's and were replaced by steamboats. These river boats carried cargo and passengers to and from river landings in the general area. The Grand River steamboat era began with the launching of the "Governor Mason" in 1837. As the boat had no whistle, a bugler was hired to stand on the pilot house and bugle out the boat's arrival. The "Allendale" was a river tug boat built in 1899 to tow barges loaded with logs to Grand Rapids for use by the furniture industry. Ferries carrying passengers operated into the twentieth century, and transported automobiles as well as wagons.

1850's-1890's—The annual autumn tradition of clearing one or more acres and burning the downed trees led one Grand Rapids Newspaper editor to measure the land clearing activities of the farmers by the amount of smoky air over Grand Rapids. Then farmers still had to cope with the stumps, each anchored in the soil. Hardwood stumps rotted in a decade or so, but pine and hemlock stumps often outlived the farmer. In their attempts to rid the land of the stumps, Allendale farmers employed stump pulling machines and even experimented with dynamite.

"The stump machine is at work in Allendale. Until that has done its work, civilized agriculture can make but little progress....they are disappearing and the fields of Allendale will yet be as beautiful as her name."

Memorials of the Grand River Valley, Franklin Everett, 1878

1850—The first area horse drawn logging railroad was built one mile west of Eastmanville and was called Barber Railroad Landing. It may very well be the first such railroad built in the Great Lakes region. This helped increase the lumbering businesses in Allendale.

1851—Sally Fox was the first person buried in the Allendale Cemetery. In the early years, each family was responsible for the upkeep of their family plot. That practice was discontinued as a neater, more consistent appearance was desired, at which time the Township took over the responsibility of maintenance and burials.

1851—The Allendale Wesleyan Church, the first congregation in the Township, was organized. G. A. Olmstead was sent to be the first pastor in 1855, and services were held in the Little Red School House. For many years the church was served by a circuit pastor who also served churches in Bauer and Tallmadge.

1852—The first post office established in the township was in a log house, with the postmaster being either Richard Roberts or Tom Jones.

PLANNING PROCESS (continued)

Events of Historical Significance (continued)

1854— The community of Blendon Landing was settled in the southeast area of the Township. The village of Blendon Landing was located north of Lake Michigan Drive on property now owned by Grand Valley State University. The community grew up as a result of the commercial activity of Blendon Lumber Company. The community existed from 1854-1880 and was positioned on a steep bluff overlooking the Grand River. At its peak, the community consisted of about two hundred people. By the river, a sawmill and shipyard provided work for the inhabitants of the village on the bluff. The Blendon Lumber Company provided logs used for the masts of ships. Around 1864, four schooners were built in the shipyard.

1858—Railroads greatly influenced travel to and from Allendale. Coopersville and Berlin became important railroad stations for Allendale residents in 1858, when the Detroit & Milwaukee Railroad was completed to Grand Haven.

1860—The area around the intersection of Lake Michigan Drive and 68th Avenue developed and was called Allendale Center. Over time, a school, church, grange hall, grocery store with a post office, carpenter shop, blacksmith shop, grist mill, sawmill, town hall and several homes were built in this area.

“It might be interesting to note the landing places, which were most of them busy, bustling places in the earlier days, but many received their death blow with the doing away of lumber and the incoming of railroads.”

Grand Rapids Daily Democrat, October 30, 1887, Edition

1864—Blendon Lumber Company built a steam locomotive logging railroad and a large sawmill at Blendon Landing on the Grand River. Hardwood as well as pine was cut into lumber at this mill, which burned down in 1864 when numerous forest fires swept west Michigan.

1866—The first general store in the Allendale area was established by Gerrit Wolbrink in 1866. It was located one and a half miles south of M-45 on 64th Avenue. All groceries, dry goods, footwear, nails, drugs, medicines, farm tools and even penny candy had to be hauled from Grand Rapids by team and wagon in the summer and by sleigh in the winter.

1870—The Chicago & Michigan Lake Shore Railroad built a line between Holland and Muskegon in 1870 that traveled just three miles west of the Township line, with stations at Robinson Center and Nunica.

1870—A third railroad was built in 1870 connecting Grand Rapids with Holland. Again, Allendale residents had to leave the Township to board the train, this time at Hudsonville or Zeeland.

PLANNING PROCESS (continued)

Events of Historical Significance (continued)

Late 1800's—The community of Rusk was settled on the southwest area of the Township. This community developed around the sawmill of Frank J. Fox and Company. The sawmill was built in the late 1800's. After the timber was cut off, a few people stayed and farmed. Rusk Christian Reformed Church was started in 1886 and soon after a cemetery next to it, which both still operate today.

1882—The cluster of homes, farms and businesses that developed around the corner of Lake Michigan Drive and 56th Avenue was named Pearline. While businesses have remained in this area through the years, Pearline was dissolved into the community of Allendale and name was discontinued.

1883—The boundaries of the Township changed. The strip of land between 48th Avenue and the Grand River originally was part of Georgetown Township, and was later detached from Georgetown Township and attached to Tallmadge Township. Early writings refer to this land as the “gore”, denoting a small triangular piece of land. In 1883 this same strip was given to Allendale so that the Township could build a road straight east to the river to connect to Bridge Street coming out of Grand Rapids.



The original Brotherton School, 1886

1887—The Bridge Street and Allendale Gravel Road Company built a toll road from Grand Rapids to Allendale in 1887. A toll gate at the top of Bridge Street Hill in Grand Rapids marked the beginning of this toll road, which stretched nine miles and ended at the Bridge Street ferry. This toll road, now called Lake Michigan Drive, became a very popular road for Allendale residents who wanted to sell products, purchase supplies, or visit friends and relatives.

1893—The Allendale Cooperative Creamery Company was organized and a building erected on what is now the northeast corner of 68th Avenue and Scott Street. With the coming of the creamery, farmers could increase their herds which increased their income and was a great boon to the Township.

1899—The Township's namesake, the “Allendale”, was a river tug boat built to tow barges loaded with logs to Grand Rapids for use by the furniture industry.

1903—Good roads were a boon to automobile owners. Dr. William Presley purchased a new one cylinder Cadillac in 1903, thereby becoming the first owner of an automobile in Allendale.

PLANNING PROCESS (continued)

Events of Historical Significance (continued)

1907—United States Senator William Alden Smith acquired a Civil War cannon from the United States War Department and donated it to the Township. It stood by the old Township Hall on 68th Avenue. During WWII, patriotism won out and the cannon was given back to the United States Government for the scrap metal drive.

1910—The Allendale Telephone Company (now Allendale Communications) was formed. Seeing a need for telephone service, a group of farmers and businessmen formed the company. This took place eighteen years before electric lighting or a paved highway came to Allendale. Allendale Communications has the distinction of being the oldest company in Allendale that is still in business from its conception.

1915—Allendale Christian School's doors opened to its first students in the fall of 1915. Their first school was constructed on the southwest corner of Lake Michigan Drive and 64th Avenue.

1917—Bert Lemmen installed gas pumps at his auto garage on the southwest corner of Lake Michigan Drive and 68th Avenue. Prior to that time, he would go around and fill gas tanks that families had at their homes or businesses.

1917—Wells Parish built a feed and flour mill on 68th Avenue. For many years they custom ground grain for area farmers.

1917—A swing bridge crossing the Grand River into Eastmanville was constructed in 1917. It could open to allow the riverboat traffic to pass. Later, when the riverboat traffic came to an end, the swings mechanism rusted shut.



Eastmanville Bridge 1917

1920's—Gemmens Grove was a picnic area in the woods in the general location of 60th Avenue, approximately 1/2 mile south of Lake Michigan Drive. Family reunions were held there, as well as area church meetings, Sunday School picnics, school picnics, and mission fests. Many baseball games were held there in the open field. There was a platform for guest speakers, musical groups and for a picture screen where films were shown.

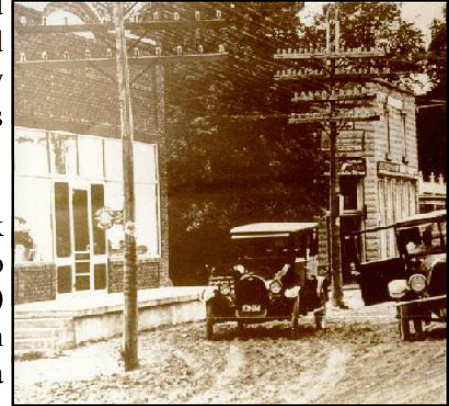
1926—A bridge was constructed over the river on the east end of the Township, connecting what is now called Lake Michigan Drive (M-45) to Bridge Street, which ran from Grand Rapids, and is now part of Lake Michigan Drive. This bridge was built as a swing bridge, in case military ships had to come through. The swings were never opened.

PLANNING PROCESS (continued)

Events of Historical Significance (continued)

1928—M-45, known then as M-50, became the first paved road in the Township. Many of the local farmers hired themselves and their horse teams out for the project. The pay was a generous two dollars per day for each man and his team.

1932—As a service to the community, Francis Wolbrink purchased a 1929 Chevrolet dump truck and converted it into Allendale's first fire truck. They equipped it with a 500 gallon open top tank for easy filling with pails or ten gallon milk cans. A 200 gallon per minute irrigation pump and a stretch of fire hose supplied a good stream of water. Round bottom buckets were stored in bins on both sides of the tank. The truck had a loud bell up front that could be rung by a rope through the windshield alerting those along the way.



Allendale Center in 1925



Fire Department in 1947

Early 1950's—As a result of a rash of tornadoes which occurred near the Township in the early 1950's, a group of concerned citizens felt the need for organizing a civil defense unit in Allendale. One of their duties was to alert the residents of tornados. They also helped to direct traffic at the time of a fire or other disaster.

1952—A new Township Hall was built at 6676 Lake Michigan Drive. It started out with a flat roof, which was an architectural feature used frequently in the 1950s. The building has been remodeled and enlarged several times since.

1953—The Allendale Improvement Association was formed. The association was instrumental in getting a post office established in the Township again, and bringing a doctor, dentist and medical clinic. The association latter became known as the Allendale Area Chamber of Commerce.

1954— The one room school houses were consolidated and Allendale Public School District was established.

1955—A \$170,000.00 bond issue was approved by the voters to construct the first elementary building for Allendale Public School. The first 12 room school was occupied in 1956.

1963—The Lion's Club was organized. This club has been active since in community projects.

PLANNING PROCESS (continued)

Events of Historical Significance (continued)

1963—Grand Valley State College opened for students. Nine different courses were offered to the 226 entering freshman, who were taught a liberal arts curriculum by 15 faculty members. By 1968 there were two classroom/office complexes in operation. In 1968 they received North Central Accreditation.

1966—The Allendale Township Library became a reality, thanks to the work of the Lions Club and the Chamber of Commerce. Township officials provided a room in the township hall for the library.

1967—Grand Valley State College had its first graduating class.

1968—A \$750,000 bond issue was approved by the voters to construct a junior high/high school building, which was built on Lake Michigan Drive. Prior to that time, Allendale students were attending junior high and high school in either Zeeland, Hudsonville or Coopersville. The building has been remodeled and renovated several times since it was built.

1969—Ottawa County constructed a bridge to replace the 1917 swing bridge over the Grand River to Eastmanville.

1983—The Allendale Historical Society formed, with several people interested in historical preservation meeting with members of the Zeeland Historical Society to discuss the steps to take to organize.

1985—Engine House No. 5 was moved to Allendale from Grand Rapids. This building was built in 1880 at the corner of Leonard St. and Monroe Ave. in Grand Rapids. One hundred years later, in 1980, it was sold to Allendale resident, Jeff DuPilka, who tore it down, brick by brick, and moved it to Allendale. The handsome building holds many antique fire units dating from 1836, fire pictures, memorabilia, and archives, all dealing with fire fighting.

Late 1980's—The business center of the Township started to shift toward the 64th & 60th Avenue/Lake Michigan Drive area, and away from the 68th Avenue/Lake Michigan Drive area.

1995—The Knowlton House Museum was opened by the Allendale Historical Society. This house was built in 1911 by Hiram and Emily Knowlton. When the Historical Society took possession of the house, they immediately moved their acquisitions, which had been stored in Engine House No. 5 and in the basement of the Township Library, to the new museum.



Knowlton House Museum

PLANNING PROCESS (continued)

Events of Historical Significance (continued)

1997—A new Allendale Public School middle/high school facility was built and occupied on 68th Avenue.



Allendale Public Middle/High School

1999—The Allendale Township Library moved into its new facility located at 6175 Library Lane, between 64th Avenue and 60th Avenue off Lake Michigan Drive.

2002—A millage was approved to purchase property and construct a new elementary facility for the Allendale Public School on Pierce Street.



Allendale Township Library

PLANNING PROCESS (continued)

Historical Military Information

The records confirm that Allendale has always responded to the call of colors when the country was in need.

The War of 1812

There were at least two veterans of the War of 1812 who lived in Allendale, William Bell and Harley Bement.

William Bell came from New York State, where he served in a New York regiment during the war. He purchased property in Allendale, died in 1864 and was buried in the Allendale Cemetery.

Harley Bement also came from New York State, where he served in the 6th New York Infantry. He also enlisted and served briefly in the Civil War with the 7th Michigan Cavalry as an assistant surgeon when he was over 60 years old.

The Mexican War (1848)

Enos Parrish served in the Mexican War with the 3rd U.S. Dragoons. He also enlisted in the service ten years later at the time of the Civil War.

The Civil War (1861-1864)

When the Civil War broke out in 1861, the Township was a country of tall pines and hardwoods. The population was about 245 people. From that small population, at least 31 men would be credited to the Township for the war effort. A few of these men seem to be attached to the Township by way of their parents and there is little evidence that they lived very long in the Township. Most can be traced from census reports and property assessments to the Township. Of the 31 men from the Township that fought in the war, 9 men (about 30%) died during the conflict. This is much higher percentage than country wide figures. One reason for the high mortality rate is a strange fact that men who lived in the country where the air was fresh and clean had the least chance of surviving. They had not been exposed to the germs and unsanitary conditions of city life.

“The military history of the Grand River Valley is but a fragment of the general history of the loyal part of the nation. ...No part of the North responded more freely than Michigan. Men were ready to volunteer, to endure the privations and dangers of the camp, the march, the bivouac and the battle.”

Memorials of the Grand River Valley, Franklin Everett, 1878

PLANNING PROCESS (continued)

Military Historical Information (continued)

The Spanish-American War (1898)

There may be residents who served in this war, but their names are not known.

World War I (1914-1918)

The people of the United States were fortunate because many of the terrible battles of World War One took place before America joined in the fight. The records show that 51 men were recruited from the Township to serve in the war. Most of the men did not go overseas because the war ended before they were needed. At least fourteen men went overseas and several were injured.



World War I



World War II (1939-1945)

Allendale furnished its share of soldiers for World War Two. The number of volunteers and draftees from the Township was 112. The times were changing, and included in the list of soldiers were four women. Miraculously, only four servicemen from the Township were killed during the war. The young men and women who were in this war went all over the world—France, Italy, Aleutian Islands, Philippines, New Guinea, England, Africa, along with a host of other places. Names like Guadalcanal, Tarawa, Iwa Jimi, and Bastogne would be burned into their memories.

World War II

Korean War (1950-1953)

There are several soldiers from the Township who fought in the Korean War, but those records are not complete.

PLANNING PROCESS (continued)

Military Historical Information (continued)

Later Conflicts

Allendale soldiers were also in Vietnam and later conflicts, but those records are not available at this time. At least one Township resident died in Vietnam, Randy Aylworth. His name can be found on the Vietnam Memorial in Washington, D.C.



The Veterans Garden of Honor was constructed as a "keep sake" of our community's 150th Anniversary, which took place in 1998.

ACTION PLAN

As listed on page twelve of this report, the goals and objectives of this plan are to:

- Identify historical structures, places, personalities, and events, etc., and give a background and rationale for recognition.
- Make recommendations as to how these structures, places, personalities, events, etc. should be historically recognized.
- Increase public awareness.
- Provide guidelines for architectural styles for new construction
- Identify historic structures in danger of future developments.
- Provide recommendations on policies to protect and enhance history.

The remaining portion of this section of the report, called the “Action Plan”, will detail how these above mentioned goals and objectives are to be met.

Identification of Historic Structures, Places, Personalities and Events

Pages 13 through 29 of this report identify significant people, places, and events, etc., in the history of the Allendale Community.

ACTION PLAN (continued)

Public Awareness

Not every historically recognized entity should be an official landmark. However, every historically recognized entity deserves acknowledgement for its contributions to community life and merits consideration. This plan encourages public policy to safeguard the community's historic, aesthetic and cultural heritage. It encourages the community to help tell their own stories for future generations.

Commemorative recognition, in various forms, tells us that history happened here, and link that history to a larger theme. Recognition can uncover forgotten histories, reveal invisible stories, or highlight multiple views of the past. Some examples of recognition are:

- Signage
- Historical plaques
- Murals
- Kiosks
- Sculptures, statues and other artwork

Signage

Signage refers to a great number of verbal, symbolic or figural markers. Signs play an important role in human activity and perception of the environment in which they are located. Signs project an image, set a mood, define a space.

Historical signs of the nineteenth century included the following varieties:

- Fascia signs, placed on the fascia between the storefront and the second floor. These signs usually gave little more than the name of the business and maybe the street number.
- Signs in the form of plaques, shields and ovals were used on many buildings. These signs had the advantage of being easily replaced as tenants came and went.
- Hanging or projecting signs were also common, although less so than in previous centuries.
- Gold leaf signs, painted or etched on glass in windows and doors were quite common.
- Sidewalk signs or "sandwich boards" offered another chance to catch the eye.
- Awnings offered another opportunity for displaying a business name.

Many efforts to control signage lead to bland sameness. The Township encourages business to fit their signage to their buildings. The following points should be considered:

- Signs should be viewed as a part of the overall architecture of the building. The building's form, name and outstanding features, both decorative and functional, support the advertising function of a sign. Signs should work with the building.
- New signs should respect the size, scale and design of the building.
- Sign placement should not obscure features of the building.
- Signs should respect neighboring buildings, not shadow or overpower adjacent structures.

ACTION PLAN (continued)

Public Awareness (continued)

Historical Plaques

Designated historical facts can be commemorated through the placement of historical plaques. Each plaque represents a small piece of our community's past. When taken in total, they allow a more complete understanding of the development of Allendale. The purpose of the plaques is to promote a knowledge of Allendale and encourage residents to stop and learn more of our history. In many instances, pictures can be incorporated into the plaque. It is suggested that each plaque include an "Allendale Historical Fact" logo, which could be similar to the one shown on the right, which mimics the symbol used by the State.

The plaque shown on the right is similar to the one that the State has installed on the campus of Grand Valley State University. The plaque reads, "In the mid-nineteenth century a site called Blendon Landing was located in this vicinity on the Grand River. Blendon Landing was organized in 1854 and named for the Blendon Lumber Company. A logging train hauled timber seven miles from the pine forest to the landing for shipping. White pine and hardwoods were transported from here and used to manufacture ships, railroad cars and guns. Blendon Landing's sawmill, logging operations and shipyard sustained a community of about 200 people in the early 1860's. The sawmill burned in 1864 and by 1870 the railroad was abandoned. By 1912, Blendon Landing was deserted. In 1965, Grand Valley State University professor Richard E. Flanders began excavating the Blendon Landing site as part of the university's archeology program. Blendon Landing is owned by the Grand Valley State University Club."



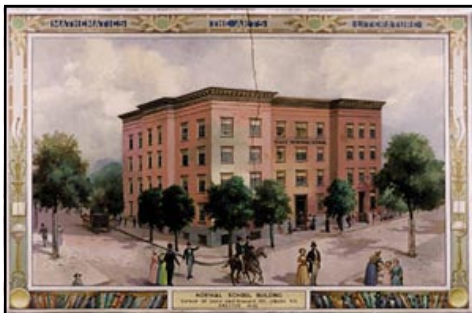
ACTION PLAN (continued)

Public Awareness (continued)

Murals

A picture says a thousand words, so the saying goes. Murals are pictures, typically of considerable size, painted on either the outside or inside of a building, which can depict images from the past, in large scale.

The mural shown on the right was painted on the inside of the United States Post Office building in El Campo, Texas. This mural shows the landscape of the area in its natural state, prior to the development of the community.



The mural on the left is located in a building of the campus of the University of Albany. The mural was painted on canvas and then mounted onto the wall. It shows the one of the original buildings of the community.

The mural on the right was painted on the outside of a building in El Campo, Texas. It replicates an actual picture taken from the Wharton County Historical Book. It shows a homestead and an old store which once stood in the town center.



ACTION PLAN (continued)

Public Awareness (continued)

Murals (continued)

The mural on the right was painted on a band shell in a public beach area in the City of Redondo, California. It shows an old hotel in the background and a beach scene in the foreground.

Murals can capture the particular look and feel of a community. A picture says a thousand words.



Kiosks

Kiosks, similar to the structure shown below, are small structures used to share public information, while providing a sheltered pavilion area. Incorporating historical facts in these types of structures is ideal. They could be scattered throughout the community, and, providing they are designed large enough, they could even be used as bus stations and have bench seating included in the design.



Sculptures, statues and other artwork

The community is now very familiar with the concept of statues, since the construction of the Veteran's Memorial in 1996. Since there is also a similar statue, done by the same artist, located on the Township Library lawn, a theme is already in progress.

Additional sculptures and artwork could be included in almost any setting. Art pieces that reflect our history would fit in any park, public plaza area, cemetery, etc.

Artwork can also be enhanced by the use of the properly compatible street amenities, such as period style planters, benches, waste receptacles, etc. Lighting, also a very important design element in the community, has already been directed by the installation of the street lighting along Lake Michigan Drive. The same, or very similar light fixtures, need to be used in future developments to keep continuity.

ACTION PLAN (continued)

Public Awareness (continued)

Summary

In summary, the goals of a public awareness program are to:

- *Increase the community's knowledge* of Allendale's historic resources by promoting instruction of local history, by encouraging involvement in preservation, and by interacting with developers.
- *Promote community economic development* by building alliances between various community groups, by providing options for land development, and by encouraging tourism.
- *Enhance the community's identity* by working with developers to guide architectural design, by encouraging residents and business owners to update and maintain their properties to similar standards.
- *Protect historic places* by promoting local ordinances and planning policies which focus on the preservation of our community's history.
- *Document resources* more fully by improving access to and use of historic resource data.
- *Increase preservation funding* by seeking out private preservation funding sources, and by increasing local and regional government involvement.

Architecture

Architectural Styles of Old Residential Structures, Existing and No Longer Existing

Exhibit A shows of some residential structures in Allendale, existing and no longer existing, and the styles that these houses are categorized under. Using the book "A Field Guide to American Houses" to identify the styles of existing homes, it was found that the following residential styles are found in the Allendale area::

- Folk/Gable Front houses
- Folk/Gable Front and Wing houses
- Folk/I-houses
- Folk/Side Gable houses
- Folk/Pyramidal houses
- Victorian/Stick houses
- Victorian/Queen Anne houses
- Victorian/Folk Victorian houses
- Eclectic/Colonial Revival houses
- Eclectic/Tudor houses
- Eclectic/Craftsman houses

ACTION PLAN (continued)

Architecture (continued)

Complimenting Architectural Styles that could be used for New Residential Structures

Exhibit B shows architectural styles that complement older house styles found in Allendale. Listed below are house styles which are found in Allendale, and styles that would complement the styles found in Allendale. Any house style listed in the two categories below would be suitable house styles for new developments.

House styles found in Allendale:

- Folk/Gable Front houses
- Folk/Gable Front and Wing houses
- Folk/I-houses
- Folk/Side Gable houses
- Folk/Pyramidal houses
- Victorian/Stick houses
- Victorian/Queen Anne houses
- Victorian/Folk Victorian houses
- Eclectic/Colonial Revival houses
- Eclectic/Tudor houses
- Eclectic/Craftsman houses

Styles that would complement the styles found in Allendale:

- Colonial/Dutch Colonial houses
- Colonial/Georgian houses
- Colonial/Adam houses
- Colonial/Early Classical Revival houses
- Romantic/Greek Revival houses
- Romantic/Gothic Revival houses
- Romantic/Italianate houses
- Eclectic/Neoclassical houses
- Eclectic/French Eclectic houses
- Eclectic/Italian Renaissance houses

ACTION PLAN (continued)

Architecture (continued)

Architectural Styles of Old Non-Residential Structures, Existing and No Longer Existing

Exhibit C shows old non-residential structures, existing and no longer existing. Some of the character from these structures should be incorporated into new structures.

Identification of Historical Structures in Danger

Much of the new development in the Township is taking place or will be taking place along the major corridors of Lake Michigan Drive, 48th Avenue, and 68th Avenue. Older buildings along these corridors are identified as the historical structures that are in danger of being replaced with new developments. New development along these corridors will mean removing structures, some of which may have value to the character of the community and/or the neighborhood in which they are located. It is important to develop ways to retain the historic flavor of these neighborhoods..

Policies to Protect and Enhance History

This study urges the Township Staff and the Planning Commission to move forward in the development of a corridor overlay zone district, giving specific development expectations and standards. This is supported by the Allendale Charter Township Strategic Plan 2015.

This plan recommends against:

- Introducing any new building, streetscape or landscape feature that is out of scale or otherwise inappropriate to the setting's historic character.
- Introducing a new landscape feature or plant material that is visually incompatible with the site or destroys site patterns or vistas.

This plan recommends:

- Retaining the historic relationship between buildings, landscape features, and open space.
- Encouraging developers to incorporate historical facts into the naming of their developments, roadways, parks, etc., explaining the name on plaques, obelisks, development brochures, and any other promotional materials used.
- Encouraging business signs that are consistent in style and appearance with the neighborhood.
- Encouraging the use of fencing that does not visually impede streetscapes or scenic views. Fencing should be consistent in design, materials, and scale with historic fencing.

ACTION PLAN (continued)

Exhibit A

**Architectural Styles of Old Residential Structures,
Existing and No Longer Existing**

Folk/Gable Front House Style

Folk/Gable Front house features:

- gable fronts
- narrow width
- two story
- relatively steep pitched roof

Folk/Gable Front house optional details:

- pillared front porches
- spindle work on porches
- patterned shingles in the gable
- small attic/ornamental windows
- returns on gable ends

11238 68th Avenue

11095 68th Avenue

11266 68th Avenue

Folk/Gable Front and Wing House Style

Folk/Gable Front and Wing house features:

- gable front with wings built off the sides
- narrow
- one or two story
- relatively steep pitched roof

Folk/Gable Front and Wing house optional details:

- shed roofed porch placed within the L made by the two wings
- roof heights the same
- roof heights of front gable higher than the roof height of wings
- small attic/ornamental windows
- pillared front porches
- spindle work on porches

11109 92nd Avenue

**Smith-Groen Centennial Farm....
House no longer exists**

7584 Warner Street

Original Potgeter home...

**James and Charlotte Cantrill home...
House no longer existing**

Folk/I-House Style

Folk/I-house features:

- side gables
- 2 story
- door centrally located in front of house
- rearward extensions
- symmetrically balanced windows

Folk/I-house optional details:

- pillared front porches
- front porches that extend the width of the house
- small attic/ornamental windows
- chimneys on gable end

9448 Pierce Street

**Harmon Bosch home in Bass River...
House no longer exists**

Folk/Side Gabled House Style

Folk/Side Gabled house features:

- larger and more flexible interiors
- shed roofed porches

Folk/Side Gabled house optional details:

- pillared front porches with shed roofs
- porches extending the width of the house
- dormers

10429 92nd Avenue

Folk/Pyramidal House Style

Folk/Pyramidal house features:

- one or two story
- square floor plans
- side gabled roofs

Folk/Pyramidal house optional details:

- shed roof front porches
- porches included under the principal roof

11401 68th Avenue

11080 68th Avenue

**Martin and Jennie Bouwman home...
House no longer exists**

6549 Lincoln Street

Victorian/Stick House Style

Victorian/Stick house features:

- steeply pitched roof of irregular shape
- dominate gable usually front facing
- multi gabled
- one story porches
- decorative stick trusses in gable

Victorian/Queen Anne house optional features:

- decorative stick porch brackets

**Moses and Mary Robinson home...
House no longer exists**

9825 76th Avenue

5737 Lake Michigan Drive

5734 Lake Michigan Drive

Victorian/Queen Anne House Style

Victorian/Queen Anne house features:

- steeply pitched roof of irregular shape
- dominate gable usually front facing
- multi gabled
- one story porches, usually wrapping around a corner, including two sides of the house

Victorian/Queen Anne house optional features:

- patterned shingles
- cutaway bay windows

11005 68th Avenue

**Mr. and Mrs. Gerrit Wolbrink home...
House no longer exists**

Victorian/Folk Victorian House Style

Victorian/Folk Victorian house features:

- steeply pitched roof
- dominate gable usually front facing
- partial or full width, one story porches, pillared with spindles
- decorative detailing

Victorian/Folk Victorian house optional details:

- decorative cornice brackets

10411 68th Avenue...
Brotherton School

Eclectic/Colonial Revival House Style

Eclectic/Colonial Revival house features:

- accentuated front door, supported by slender columns to form an entry porch
- facades have symmetrically balanced windows
- center front door

Eclectic/Colonial Revival optional details:

- hipped roof
- front porches
- decorative crown over front door
- center gable added

5187 Lake Michigan Drive

10416 68th Avenue

Eclectic/Tudor House Style

Eclectic/Tudor house features:

- steeply pitched roof
- prominent steeply pitched cross gable
- tall, narrow windows
- one or two story
- varied eave line heights

Eclectic/Tudor house optional details:

- massive chimney

11025 68th Avenue

Eclectic/Craftsman House Style

Eclectic/Craftsman house features:

- low pitched, gabled roof
- unenclosed eave overhang
- tapered square columns
- windows with divided upper panes
- front doors centrally located in front house
- front porches

Eclectic/Craftsman house optional details:

- decorative braces added under gables

6915 Lake Michigan Drive

Exhibit B

**Architectural Styles
Existing in Allendale and the Surrounding Areas
that could be used for
New Residential Structures**

Folk/Gable Front House Style

Folk/Gable Front house features:

- gable fronts
- narrow width
- two story
- relatively steep pitched roof

Folk/Gable Front house optional details:

- pillared front porches
- spindle work on porches
- patterned shingles in the gable
- small attic/ornamental windows returns on gable ends

Folk/Gable Front and Wing House Style

Folk/Gable Front and Wing house features:

- gable front with wings built off the sides
- narrow
- one or two story
- relatively steep pitched roof

Folk/Gable Front and Wing house optional details:

- shed roofed porch placed within the L made by the two wings
- roof heights the same
- roof heights of front gable higher than the roof height of wings
- small attic/ornamental windows
- pillared front porches
- spindle work on porches

Folk/I-House Style

Folk/I-house features:

- side gables
- 2 story
- rearward extensions
- symmetrically balanced windows

Folk/I-house optional details:

- pillared front porches
- front porches that extend the width of the house
- door centrally located in front of house
- small attic/ornamental windows
- chimneys on gable end

Folk/Side Gable House Style

Folk/Side Gabled house features:

- larger and more flexible interiors
- shed roofed porches

Folk/Side Gabled house optional details:

- pillared front porches with shed roofs
- porches extending the width of the house
- dormers

Folk/Pyramidal House Style

Folk/Pyramidal house features:

- one or two story
- square floor plans
- side gabled roofs

Folk/Pyramidal house optional details:

- shed roof front porches
- porches included under the principal roof

Colonial/Dutch Colonial House Style

Colonial/Dutch Colonial house features:

- one story, or one and one half story
- side gabled
- steeply pitched roofs
- very little rake overhang

Colonial/Dutch Colonial house optional details:

- flared eave overhang
- gambrel roof

Colonial/Georgian House Style

Colonial/Georgian house features:

- double hung windows
- paneled front door with decorative crown supported by decorative pilasters
- row of small rectangular panes beneath the door crown
- cornice usually emphasized with decorative molding
- center front door
- two story

Colonial/Georgian house optional details:

- gambrel roof
- hipped roof

Colonial/Adam House Style

Colonial/Adam house features:

- double hung windows, typically with six panes per window
- paneled front door with decorative crown supported by decorative pilasters
- small entry porch
- roof small rectangular panes beneath the door crown
- cornice usually emphasized with decorative molding
- center front door
- two story
- shutters

Colonial/Adam house optional details:

- gambrel roof
- hipped roof
- three story

Colonial/Early Classical Revival House Style

Colonial/Early Classical Revival house features:

- double hung windows, typically with six panes per window
- paneled front door with decorative crown supported by decorative pilasters
- Full height front porch with four columns
- cornice usually emphasized with decorative molding
- center front door
- two story
- shutters

Colonial/Early Classical Revival house optional details:

- one story
- gable front with wings

Romantic/Greek Revival House Style

Romantic/Greek Revival house features:

- double hung windows
- paneled front door with decorative crown
- cornice usually emphasized with decorative molding
- center front door
- two story
- narrow line of transom and sidelight around the front door

Romantic/Greek Revival house optional details:

- full height or one story front porch with columns
- full height, full façade porch

Romantic/Gothic Revival House Style

Romantic/Gothic Revival house features:

- double hung windows
- steeply pitched roof, usually with steep cross gables
- wall surface extending into gable without break
- one story entry porch
- two story
- gables commonly with decorated vergeboards
- windows extending into gables, with gothic shape

Romantic/Gothic Revival house optional details:

- full façade entry porch
- multi gabled
- parapets

Romantic/Italianate House Style

Romantic/Italianate house features:

- low pitched roof
- two or three stories
- tall, narrow windows, commonly arched above
- widely overhanging eaves
- crowns above windows

Romantic/Italianate house optional details:

- cupola
- hipped roof

Victorian/Stick House Style

Victorian/Stick house features:

- steeply pitched roof of irregular shape
- dominate gable usually front facing
- multi gabled
- one story porches
- decorative stick trusses in gable

Victorian/Queen Anne house optional features:

- decorative stick porch brackets

Victorian/Queen Anne House Style

Victorian/Queen Anne house features:

- steeply pitched roof of irregular shape
- dominate gable usually front facing
- multi gabled
- one story porches, usually wrapping around a corner, including two sides of the house

Victorian/Queen Anne house optional features:

- patterned shingles
- cutaway bay windows

Victorian/Folk Victorian House Style

Victorian/Folk Victorian house features:

- steeply pitched roof
- dominate gable usually front facing
- partial or full width, one story porches, pillared with spindles
- decorative detailing

Victorian/Folk Victorian house optional details:

- decorative cornice brackets

Eclectic/Colonial Revival Style House

Eclectic/Colonial Revival house features:

- accentuated front door, supported by slender columns to form an entry porch
- facades have symmetrically balanced windows
- center front door

Eclectic/Colonial Revival optional details:

- hipped roof
- front porches
- decorative crown over front door
- center gable added

Eclectic/Neoclassical House Style

Eclectic/Neoclassical house features:

- columns
- façade dominated by full height porch or a porch for each level
- facades have symmetrically balanced windows
- façade with symmetrically balance windows

Eclectic/Neoclassical optional details:

- front gabled roof
- full façade porch
- one story

Eclectic/Tudor House Style

Eclectic/Tudor house features:

- steeply pitched roof
- prominent steeply pitched cross gable
- tall, narrow windows
- one or two story
- varied eave line heights

Eclectic/Tudor house optional details:

- massive chimney

Eclectic/French Eclectic House Style

Eclectic/French Eclectic house features:

- Entry area usually accentuated by small classical columns
- Hipped roof
- brick, stone, or stucco wall cladding

Eclectic/French Eclectic house optional details:

- Parapets
- Arched windows or doors

Eclectic/Italian Renaissance House Style

Eclectic/Italian Renaissance house features:

- Entry area usually accentuated by columns
- Brick, stone, or stucco wall cladding
- Hipped roof
- Façade commly

Eclectic/Italian Renaissance house optional details:

- Parapets
- Arched windows or doors

Eclectic/Craftsman House Style

Eclectic/Craftsman house features:

- low pitched, gabled roof
- unenclosed eave overhang
- tapered square columns
- windows with divided upper panes
- front doors centrally located in front house
- front porches

Eclectic/Craftsman house optional details:

- decorative braces added under gables

Exhibit C

**Architectural Styles of Old Non-Residential Structures,
Existing and No Longer Existing**

Grand Rapids Pumping Station on Lake Michigan Drive

Engine House #5, 6620 Lake Michigan Drive

- Brick façade
- Decorative brick on the corners
- Variable roof lines
- Decorative molding in front gable
- Decorative lights on both sides of front door
- Arches over front door
- Brick banding to break up the front façade
- Decorative brick cornice work over windows
- Cupolas
- Decorative roofing
- Tall, narrow windows
- Small, decorative windows

Walcott Elevator, 11267 68th Avenue

- Lap siding
- Tall, narrow, double hung por windows
- Small, decorative windows
- Shed roof porches
- Multi stories
-

Parish Mill

**Post Office, located on 68th avenue south of
Lake Michigan Drive**

- Lap siding
- Tall, narrow, double hung windows
- Small, decorative windows
- Porches
- Multi stories
- Full window façade on front
- Decorative cornices
- Outdoor seating

Wolbrink's Store

White's Store

Rusk Store

Gemmen Brothers Store

- Tall, narrow, double hung windows
- Close to roadway
- Multi stories
- Living units above
- Full window façade on front
- Decorative cornices
- Front roof line decorated with arches, stepped effect, etc.
- Corner pillared look
- Decorative brick work to break up the front façade

M-50 Garage

Town Line Service Station

**Wolbrink store, replaced original store
which burned down in 1920**

- Variable roof lines
- Multi gables
- Cupolas
- Tall, narrow, double hung windows
- Small, decorative windows
- Lap siding
- Decorative woodwork
- Paneled doors

Blakeney School

First Allendale High School

Old Rusk Christian Reformed Church

Old Allendale Christian Reformed Church

- Variable roof lines
- Multi gables
- Cupolas
- Arched windows
- Tall, narrow, double hung windows
- Small, decorative windows
- Lap siding
- Multi stories
- Decorative woodwork
- Paneled doors
- Bell towers
- Decorative cornices or windows above from door

Old Wesleyan Methodist Church

Old First Reformed Church

ACTION PLAN (continued)

Public Awareness

- Encourage resident support by regular reports from the Historical Recognition Committee in the local Chamber of Commerce monthly newsletter.
- Educate developers to be sensitive too adjacent historic properties. Development needs not copy historical neighbors, but must be compatible with the area.
- Encourage residents to purchase, improve and maintain substandard propertices.
- Develop historical reference materials for schools, residents, potential residents, developers, etc.
- Build constituencies in the community and partner with township organizations
- Public education—documentation, mapping, exhibits, oral history projects
- Stronger communication with school systems
- Redefine the story—responsive to today’s audience and in their own terms
- Integrate activities through art and outreach activities in the community
- Work with arts and cultural events—find out where we are as a community, as individuals and as a society, where we come from, and where we are going. Make people understand.
- Work with local artists to promote history
-

ACTION PLAN (continued)

Policies, Regulations and Ordinances

Responsibilities of the Township Board, Boards and Staff

- Maintain firm zoning boundaries to prevent spot zoning and to reflect current and desired uses.
- Support enforcement of ordinances and regulations.
- Encourage early involvement of the Historical Recognition Committee in reviewing development plans.
- Encourage periodic analysis policies and procedures.
- Establish a notification system for neighbors of projects to be reviewed by the Historical Recognition Committee.
- Periodically review design guidelines for such things as infill development, landscape, colors, railings fencing, accessory structures, etc.
- Encourage the maintenance of exterior and grounds of commercial and institutional structures in a historically appropriate condition.
-

ACTION PLAN (continued)

Preservation Process

- Establish an assessment policy to protect historical properties from the effects of major renovations and nearby developments.
-

Original First Reformed Church

Exhibit A

District One Maps and Pictures

Allendale Historical Society

The Allendale Historical Society had its debut on January 27, 1983, when several people interested in historical preservation met with members of the Zeeland Historical Society to discuss the steps to be taken for organization.

The first general meeting to explain the purpose and enlists members was held at the Township Hall on April 12, 1983. Thus began the acquisition and accession of the many items donated to the society.

In 1995 the Township purchased the Knowlton House property, which is located adjacent to the Allendale Community Park. The move to the Knowlton House was accomplished in September of 1995 and several general meetings were held there while the Carriage House, a building east of the house, was renovated for a meeting room.

The Knowlton House is available for tours upon request, and is open to the public on such occasions as the annual 4th of July celebration.



Knowlton House Museum

Exhibit G

Ordinances, Resolutions and
Minutes in support of the Plan

Structures No Longer Existing In District Three

Structures Existing In District Three

Historic Communities In District Three

Bass River Community

6/21/04

Jim and Phil....could you guys look over this “final” draft of the Historical Recognition Plan....if it looks OK to you guys, I would like to send it on the Planning Commission and get this project wrapped up!

Thanks!