



UNIVERSITY of
ROCHESTER



Business.

Education.

Engineering.

Medicine.



Combined-Admission
Programs

Combined-Admission Programs

One of the hallmarks of a University of Rochester education is the freedom to design a curriculum that is built around your interests, not around a long list of requirements. Many Rochester students take advantage of this flexibility by pursuing double majors and even the occasional triple major.

An even more interest-intensive option is to apply to our Combined-Admission Programs (CAPs), offered in business, education, engineering, and medicine. These programs combine a bachelor's degree with a graduate/professional degree, simplify the admission process (granting admission to both programs simultaneously), and provide access to exclusive events, mentoring, networking, and other outstanding opportunities.

Will *you* take advantage?

In addition to the benefits of their combined programs, CAPs students enjoy all of the same opportunities as other Rochester students, including consideration for undergraduate scholarships, the flexible Rochester Curriculum, study abroad, and unique programs such as Take Five, a tuition-free fifth year to pursue an interest outside your major.

Graduate Engineering at Rochester (GEAR)

GEAR is a five-year BS + MS program for students who want to accelerate their master's degree. GEAR provides selected students with an assurance of admission to the Hajim School of Engineering and Applied Sciences in one of nine master's programs:

- Alternative Energy
- Biomedical Engineering
- Chemical Engineering
- Computer Science
- Electrical and Computer Engineering
- Materials Science
- Mechanical Engineering
- Optics
- Technical Entrepreneurship and Management (TEAM)

Perks of the program include:

- Assured admission to the MS program as an entering undergraduate
- Exemption from qualifying exams for the MS program
- 75% tuition award for the fifth year of study, in the form of a teaching assistantship
- Focused advising by GEAR mentors
- Extensive research, internship, and professional development opportunities
- Access to premier research facilities as both an undergraduate and graduate student



Applying to the Program

To apply for GEAR, you must complete the University of Rochester's regular application process, as well as the Combined-Admission Programs application. The priority application deadline is **December 1**; the final deadline is **January 1**. For details, please see the How to Apply section on page 15.

Many factors are taken into consideration as finalists are selected. Although there aren't any minimum requirements, the strongest applicants typically:

- express an interest in, and knowledge of, engineering programs at the University of Rochester
- have an unweighted GPA of 3.7
- rank in the top 15% of their graduating class (if applicable)
- perform well on SAT Reasoning or ACT exams
- score 650 or higher on math- and science-based SAT Subject Tests (recommended)
- complete coursework at the highest levels available (honors, AP, IB, college-level classes, etc.), including one year of calculus
- participate in extracurricular or summer activities that include relevant engineering experiences, such as FIRST Robotics, Talent Search, or Science/Math Bowl

Admission

If you're selected for a GEAR interview, you'll be notified by the Office of Admissions in mid- to late February. Interviews, which are required for admission to GEAR, will take place in March. You will be notified of the final decision in early April.

If you are not offered an interview, you will still be considered for regular admission to the University and should receive your admission decision by April 1.

Please note: If you're admitted to the University through Early Decision, you will receive your admission letter in mid-December, but your CAPS application will follow the regular decision process described here. Your acceptance of our Early Decision offer cannot be contingent upon your admission to GEAR.

For more information on the Hajim School, visit www.hajim.rochester.edu.

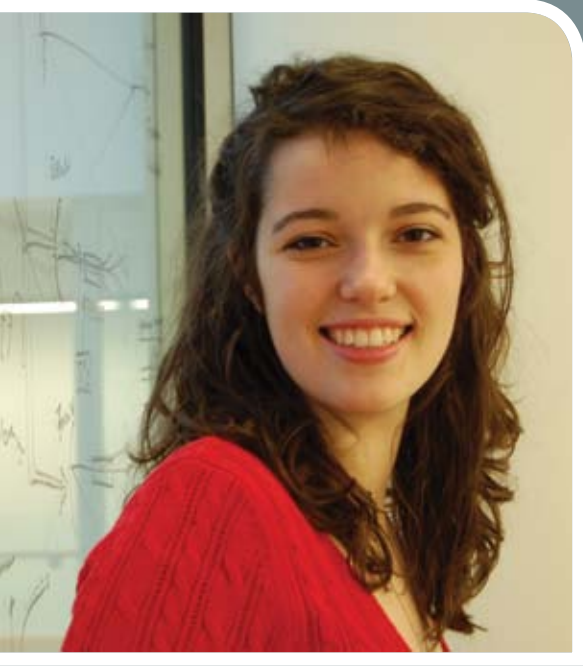
“The GEAR program opens up an extra year of study for students who truly enjoy learning and want to continue their education beyond a bachelor’s degree. Engineers have some of the most rigid schedules, so the extra year really helps, especially when fitting in study abroad.”

Courtney Stewart '12
Hometown: Oakdale, CT
Major: Chemical Engineering
Minor: Biomedical Engineering
Cluster: Linguistics



“The GEAR program is an exceptional opportunity to challenge yourself as a student, engineer, and future innovator. One of GEAR’s key highlights is its ability to truncate the amount of time before I can launch myself into my career. With assured acceptance into the master’s program, I know I’ll graduate with the confidence necessary to contribute to the engineering field.”

Taylor Chartier '12
Hometown: La Porte, IN
Major: Chemical Engineering
Minor: Biology
Cluster: African Studies



Guaranteed Rochester Accelerated Degree in Education (GRADE)

GRADE is a five-year BA/BS + MEd program for students interested in becoming educators. (Students selecting the counseling program will need to complete six years.) GRADE scholars enter the University with an assurance of admission to the Margaret Warner Graduate School of Education and Human Development upon successful completion of a bachelor's degree.*

The program is designed to offer students a quality liberal arts education while also preparing them to become educators. After completing their undergraduate work, GRADE students are expected to complete 15 months of study at the Warner School (summer, fall, spring, and summer). For the master's program, students may specialize in counseling, higher education, or elementary or secondary education, with the option of certification in special education, literacy, or TESOL.

** Students may choose any undergraduate major but should include MEd preparatory classes as required by New York State Certification requirements.*

Perks of the program include:

- Assured admission to the MS program as an entering undergraduate
- Exemption from the GRE
- Steven Harrison Scholarship (1/3 of tuition) for all five years
- Special invitations to book talks and speaker series
- Focused advising by GRADE mentors, including personalized placement for classes and experiential learning
- Extensive research, internship, and professional development opportunities



Applying to the Program

To apply for GRADE, you must complete the University of Rochester's regular application process, as well as the Combined-Admission Programs application. The priority application deadline is **December 1**; the final deadline is **January 1**. For details, please see the How to Apply section on page 15.

Many factors are taken into consideration as finalists are selected. Although there aren't any minimum requirements, the strongest applicants typically:

- express a passion for social justice and knowledge of the education programs at the University of Rochester
- have clear goals within their subject or specialization area, including coursework and extracurricular activities
- have an unweighted GPA of 3.7
- rank in the top 15% of their graduating class (if applicable)
- perform well on SAT Reasoning or ACT exams
- complete coursework at the highest levels available (honors, AP, IB, college-level classes, etc.)
- participate in extracurricular activities relevant to education, such as tutoring, teaching, or coaching

Admission

If you're selected for a GRADE interview, you'll be notified by the Office of Admissions in mid- to late February. Interviews, which are required for admission to GRADE, will take place in March. You will be notified of the final decision in early April.

If you are not offered an interview, you will still be considered for regular admission to the University and should receive your admission decision by April 1.

Please note: If you're admitted to the University through Early Decision, you will receive your admission letter in mid-December, but your CAPs application will follow the regular decision process described here. Your acceptance of our Early Decision offer cannot be contingent upon your admission to GRADE.

For more information on the Warner School, visit www.rochester.edu/warner.



“I love the GRADE program because it saves me time and money. It was this unique program that made me decide to attend the University of Rochester. I’m glad I did—now I’m studying a subject I don’t know how I’d live without!”

Clay Monson '12

Hometown: Phelps, NY

Major: English

Minors: Music, Psychology



Rochester Early Business Scholars (REBS)

REBS is a six-year BA/BS + MBA program for exceptional undergraduates who know early on that they're interested in pursuing a career in a business-related field. Students selected for REBS enter the University with an assurance of admission to the Simon Graduate School of Business upon successful completion of a bachelor's degree* and meeting REBS requirements. The program is designed to provide academic enrichment, rather than acceleration, in preparing students for the business world.

** Students may choose to major in business or any other undergraduate major but should include MBA preparatory classes in statistics, microeconomics, financial accounting, algebra, and calculus.*

Perks of the program include:

- Assured admission to the MBA program as an entering undergraduate
- Exemption from the GMAT (unless competing for merit-based scholarships for the MBA program)
- MBA-specific academic advisement
- Access to MBA student mentoring
- Business-related summer internships
- Invitations to exclusive seminars, presentations, and networking opportunities with academic and business leaders



Applying to the Program

To apply for REBS, you must complete the University of Rochester's regular application process, as well as the Combined-Admission Programs application. The priority application deadline is **December 1**; the final deadline is **January 1**. For details, please see the How to Apply section on page 15.

Many factors are taken into consideration as finalists are selected. Although there aren't any minimum requirements, the strongest applicants typically:

- express a focused interest in business
- have business-related experience
- participate in extracurricular activities, including both business and non-business interests
- have a strong unweighted GPA
- complete coursework at the highest levels available (honors, AP, IB, college-level classes, etc.)
- earn excellent SAT I or ACT scores
- intend to explore additional subject areas while at the College, since REBS is not an accelerated program
- demonstrate a preparedness to enter an MBA program in which the average age is 26 and the average work experience is five years

Admission

If you're selected for a REBS interview, you'll be notified by the Office of Admissions in mid- to late February. Interviews, which are required for admission to REBS, will take place in March. You will be notified of the final decision in early April.

If you are not offered an interview, you will still be considered for regular admission to the University and should receive your admission decision by April 1. As a regularly admitted undergraduate, you may still take classes through the Simon School toward a business major or minor.

Please note: If you're admitted to the University through Early Decision, you will receive your admission letter in mid-December, but your CAPs application will follow the regular decision process described here. Your acceptance of our Early Decision offer cannot be contingent upon your admission to REBS.

For more information on the Simon School, visit www.simon.rochester.edu.



“By pursuing an early MBA, I have the benefit of continuing my education with the same dedication and energy I have as an undergraduate, without the added pressures of a full-time occupation and providing for a family. I’ll enter the business world with strong problem-solving and leadership skills that otherwise would have taken years of work experience to obtain. I am positive that this head start will give me an advantage in seeking exciting business positions and making significant achievements.”

Scott Strenger '12
Hometown: Plainview, NY
Major: Entrepreneurship

“Before entering college, I was fortunate enough to launch and operate two successful businesses. Today, my company, which arranges academic summer day camps, has tripled in size thanks to the knowledge and skills I have mastered here at Rochester.”

Eric Meyer '12
Hometown: Geneseo, NY
Major: Political Science

Rochester Early Medical Scholars (REMS)

REMS is an eight-year BA/BS + MD program for outstanding undergraduates who are committed to pursuing a medical career. Established in 1991, REMS was the first combined-admission program at Rochester. Students admitted to REMS are also admitted to the University's School of Medicine and Dentistry upon successful completion of the bachelor's degree and pre-med core courses.

Perks of the program include:

- Conditional guarantee of admission to the MD program as an entering undergraduate
- Exemption from the MCAT
- Mentoring by renowned faculty
- Seminars and social events
- Hands-on experience in clinics and labs
- Funding for summer research

Applying to the Program

To apply for REMS, you must complete the University of Rochester's regular application process, as well as the Combined-Admission Programs application. All REMS application materials must be postmarked by **December 1**. For details, please see the How to Apply section on page 15.

Many factors are taken into consideration as finalists are selected. Although there aren't any minimum requirements, the strongest applicants typically:

- have a 3.95 unweighted GPA in a rigorous college-preparatory curriculum (honors, AP, IB, college-level classes, etc.)
- rank in the top 3% of their graduating class (if applicable)
- have significant medical experience (paid or volunteer work, job shadowing, summer programs, etc.)
- are also involved in non-medical activities
- perform exceptionally well on standardized tests, most scoring at least 1450 out of 1600 on the SAT Reasoning Test or 34 composite on the ACT (writing subscores are also considered)

- score 700 or higher on select SAT Subject Tests (completion of either biology or chemistry and either Math IC or Math IIC is highly recommended)
- have experience in medical or scientific research

Admission

Admission to REMS is extremely selective: In recent years, Rochester has received approximately 700 to 1,000 REMS applications annually. From this applicant pool, we invite no more than 50 finalists to campus for REMS interviews. These finalists are vying for 10 spaces in the program.

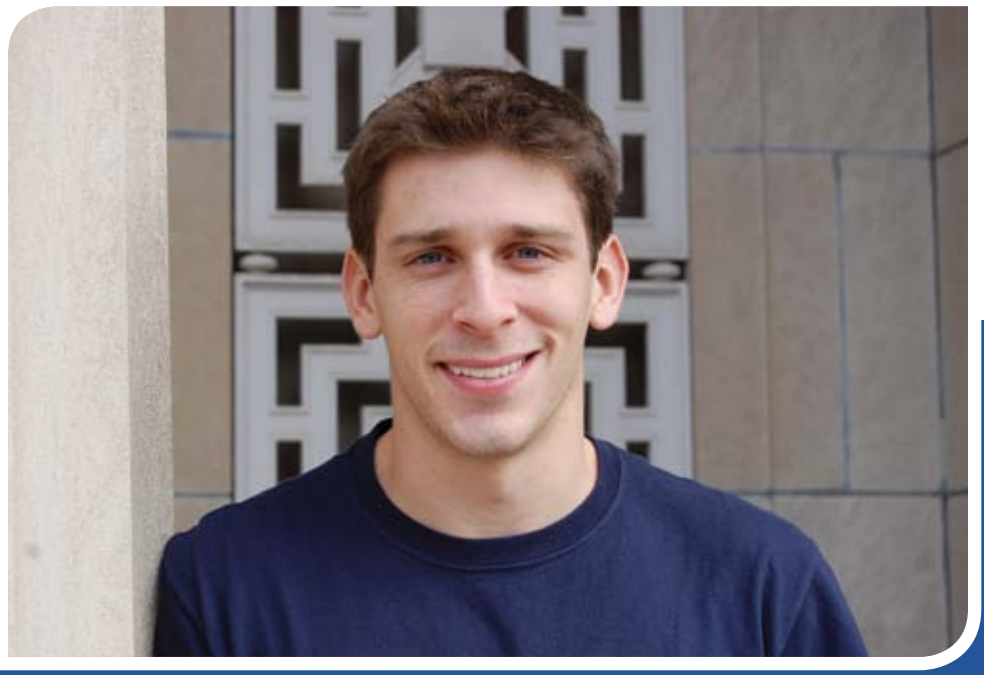
If you're selected for a REMS interview, you'll be notified by the Office of Admissions in February. Interviews, which are required for admission to REMS, will take place during the last week of February or early March. You will be notified of the final decision in March.

If you are not offered an interview, you will still be considered for regular admission to the University and should receive your admission decision by April 1. The majority of pre-med students at Rochester are not in REMS, yet they still have access to the same pre-med advising, clinical experiences, and undergraduate research opportunities as REMS students.

To learn more about the advantages of pre-med studies at Rochester, please visit www.rochester.edu/college/CCAS/health/premedadvantages.html.

Please note: If you're admitted to the University through Early Decision, you will receive your admission letter in mid-December, but your CAPs application will follow the regular decision process described here. Your acceptance of our Early Decision offer cannot be contingent upon your admission to REMS.

For more information on the School of Medicine and Dentistry, visit www.urmc.rochester.edu/education.



“I chose REMS because of the amount of personal attention and support I received, even as an applicant. Being in REMS is like being part of a family. You get to meet everyone in the program and enjoy fun and interesting activities together, such as seminars, lectures, and picnics.

Another great feature of the REMS program is that our exceptional medical institution is right across the street from the River Campus, and there are plenty of opportunities to get involved as an undergraduate.

I went into college knowing that I wanted to pursue both a career in medicine and a hobby in music. The REMS program, along with the unique Rochester Curriculum, allowed me to do exactly that. I had plenty of time to study biology and public health and even shadow physicians, while also performing music frequently with several different ensembles on campus.”

Bryan Brown '11, '15M (MD)

Hometown: Merrick, NY

Major: Health and Society

Minor: Biology

Cluster: Music

How to Apply

To apply for any of the Combined-Admission Programs, you must submit all of the following materials:

- Common Application
- Rochester's Application Supplement
- Combined-Admission Programs Application
- Supporting materials (guidance counselor and teacher recommendations; high school transcript)
- Official SAT Reasoning or ACT scores

All forms are available at

<http://enrollment.rochester.edu/admissions/apply/freshmen>.

Application Deadlines

For strongest consideration, applications should be postmarked by **December 1**. That is the final deadline for REMS; for GEAR, GRADE, and REBS, the final deadline is **January 1**.

Contact Information

GEAR

Stacy Wells Shea

Associate Director of Combined-Admission Programs

Office of Admissions

stacy.wells@rochester.edu

Kelly Johnson

Academic Advisor

Hajim School of Engineering and Applied Sciences

kelly.johnson@rochester.edu

GRADE

Stacy Wells Shea

Associate Director of Combined-Admission Programs

Office of Admissions

stacy.wells@rochester.edu

Sean Hanna

GRADE Advisor; Associate Director

College Center for Academic Support

sean.hanna@rochester.edu

Danielle Ianni
Assistant Director of Admissions
Warner Graduate School of Education and Human Development
dianni@warner.rochester.edu

REBS

Justine Rumbel
REBS Coordinator; Senior Admissions Counselor
Office of Admissions
justine.rumbel@rochester.edu

Dana Eagle
Associate Director of Admissions
Simon Graduate School of Business Administration
dana.eagle@simon.rochester.edu

Karen Forsythe
Academic Advisor
Multidisciplinary Studies Center
karen.forsythe@rochester.edu

REMS

Stacy Wells Shea
Associate Director of Combined-Admission Programs
Office of Admissions
stacy.wells@rochester.edu

Catherine Towsley
Director of Health Professions Advising
Dean's Office
catherine.towsley@rochester.edu

MELIORA | EVER
BETTER

University of Rochester
Office of Admissions
P.O. Box 270251
Rochester, New York 14627-0251
Email: admit@admissions.rochester.edu
Phone: (585) 275-3221
Toll-free: (888) 822-2256

<http://enrollment.rochester.edu/admissions/learning/programs.shtm>



Want to learn more?

To receive more information about Rochester's Combined-Admission Programs, simply fill out the card below and put it in the mail.



UNIVERSITY of ROCHESTER

<http://enrollment.rochester.edu/admissions>

Last Name

First Name, MI

Mailing Address (Number & Street/P.O. Box)

City

State

Zip

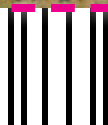
Email

High School Graduation Year

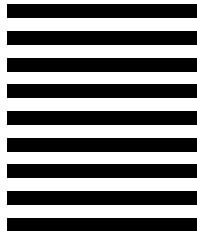
High School Name

I am interested in: *(Check all that apply)*

- Graduate Engineering at Rochester (GEAR)
- Guaranteed Rochester Accelerated Degree in Education (GRADE)
- Rochester Early Business Scholars (REBS)
- Rochester Early Medical Scholars (REMS)



NO POSTAGE
NECESSARY
IF MAILED
IN THE
UNITED STATES



BUSINESS REPLY MAIL

FIRST-CLASS MAIL

PERMIT NO. 137

ROCHESTER, N.Y.

POSTAGE WILL BE PAID BY ADDRESSEE

University of Rochester
Office of Admissions
P.O. Box 23029
Rochester, NY 14692-9804

