

# RS/LB/RL

## RATCHET, REVOLUTION AND DIRECT DRIVE COUNTER

### RATCHET COUNTER

Adds 1 count for each 40°~ 45° actuation of lever.  
Count Speed: 200 ~ 500 counts / minute


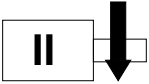
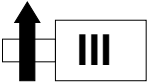
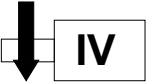
### REVOLUTION COUNTER

Adds 1 count for every complete revolution of the shaft.  
Count Speed: 600 revolutions / minute

### DIRECT DRIVE COUNTER

Adds 10 counts for every complete revolution (1 count / 1/10 shaft revolution) of the shaft.  
Count Speed: 100 revolutions / minute

### COUNT DIRECTION / SHAFT POSITION

			
RIGHT SHAFT TOP GOING	RIGHT SHAFT TOP COMING	LEFT SHAFT TOP GOING	LEFT SHAFT TOP COMING

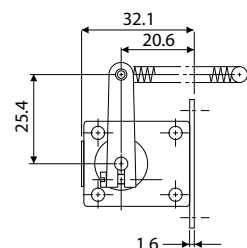
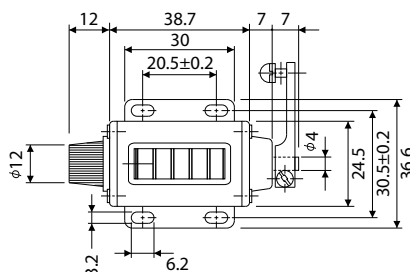
### MODEL SELECTION

TYPE	DIGITS	FIGURES (mm)	TYPE (I)	TYPE (II)	TYPE (III)	TYPE (IV)
RATCHET	5	4.8 x 2.4	RS-204-5 (I)	RS-204-5 (II)	RSL-204-5 (III)	RSL-204-5 (IV)
	4	4.4 x 2.8	RS-4 (I)	—	—	—
	5		RS-5 (I)	RS-5 (II)	—	—
	6		RS-6 (I)	—	—	—
	5	6.0 x 4.5	RS-303-5 (I)	—	—	—
REVOLUTION	4	4.4 x 2.8	LB-4 (I)	—	—	—
	5		LB-5 (I)	—	—	—
DIRECT DRIVE	4	4.4 x 2.8	RL-4 (I)	—	—	—
	5		RL-5 (I)	—	—	—
		5	6.0 x 4.5	RL-219-5 (I)	—	—

Operating Temperature	-5°C - +40°C	Operating Humidity	85%RH maximum	Remarks	Non-Freezing, Non-Condensing
-----------------------	--------------	--------------------	---------------	---------	------------------------------

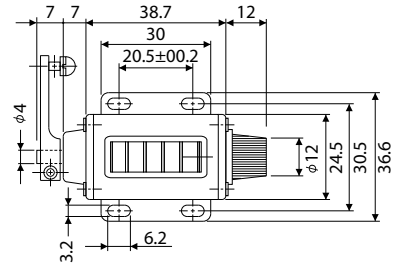
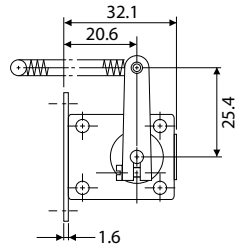
### DIMENSIONS

RS-204-5 (I)  
RS-204-5 (II)

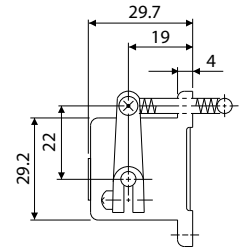
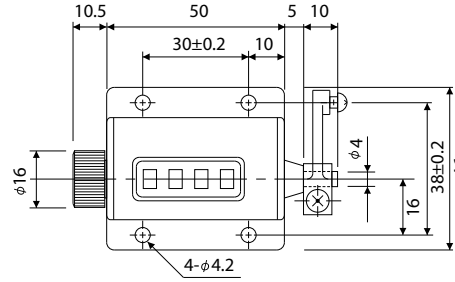


# DIMENSIONS

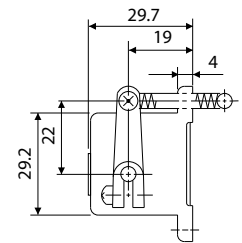
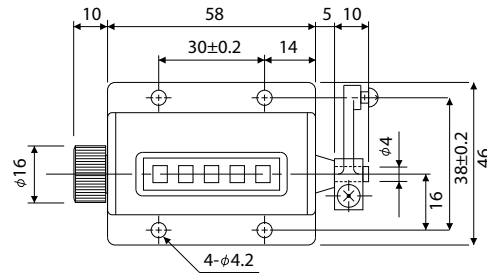
RSL-204-5 (III)  
RSL-204-5 (IV)



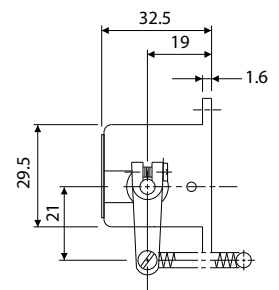
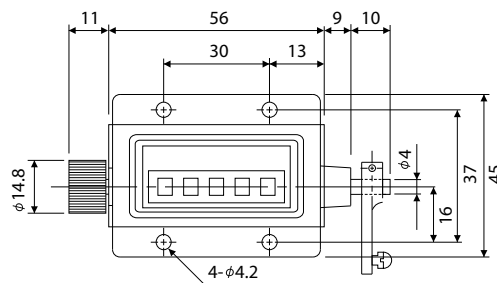
RS-4 (I)



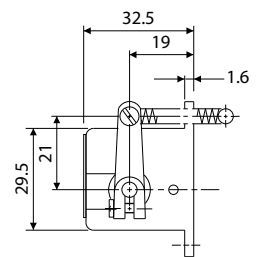
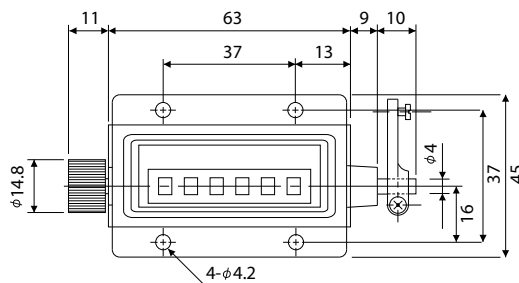
RS-5 (I)



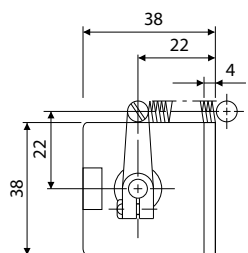
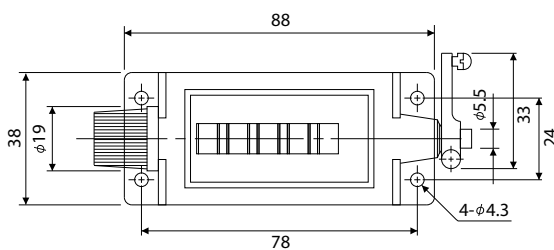
RS-5 (II)



RS-6 (I)

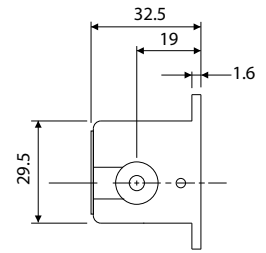
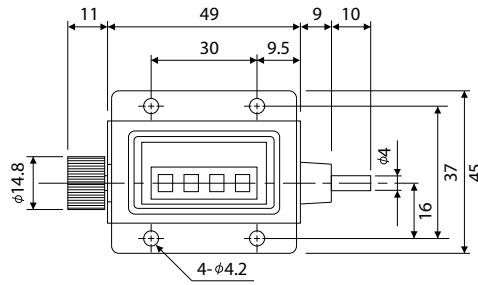


RS-303-5 (I)

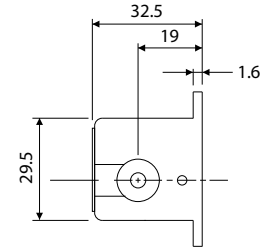
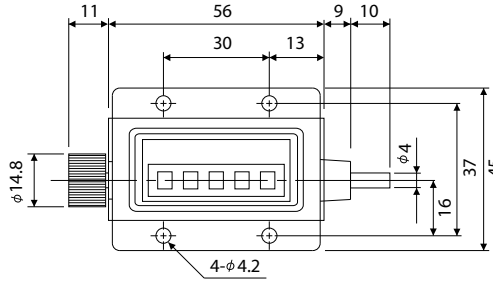


# DIMENSIONS

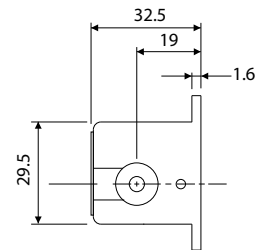
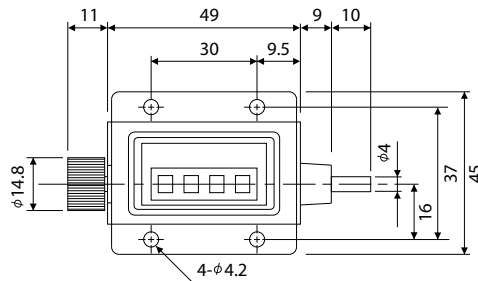
LB-4 (I)



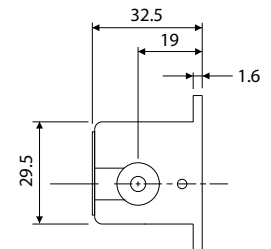
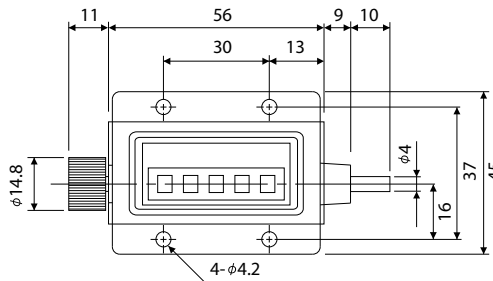
LB-5 (I)



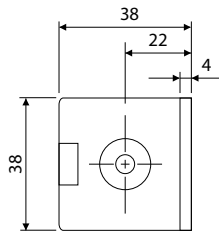
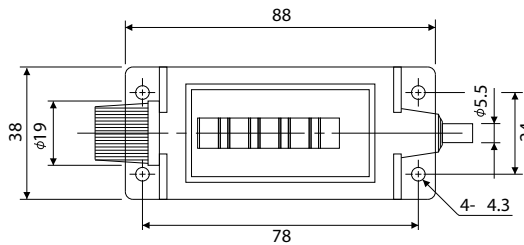
RL-4 (I)



RL-5 (I)



RL-219-5 (I)



This catalog was last revised Jan. 22, 2013.

\*Subject to change without prior notice.

All Rights Reserved, Copyright © 2013, LINE SEIKI CO., LTD.



**LINE SEIKI CO., LTD.**

Address : 37-7, Chuo-Cho, 2-Chome, Meguro-ku  
Tokyo 152-0001 JAPAN

Contacts : Tel: +81-3-3716-5151 Fax: +81-3-3710-4552  
E-mail: webtrade@line.co.jp

URL : <http://www.lineseiki.com>