



37-7 Chuo-Cho, 2-Chome
 Meguro-ku, Tokyo 152-0001 Japan
 TEL:+81-3-3716-5151 FAX:+81-3-3710-4552
 U R L □ http://www.lineseiki.com
 E-mail □ webtrade@line.co.jp

"REALTIME THERMO GRAPH" TC-850 / TC-950 EXCLUSIVE SOFTWARE UPCB-01 VER.2

Thank you for purchasing the "REALTIME THERMO GRAPH VER.2" software, designed exclusively for Line Seiki's digital thermometer TC-850 / TC-950.

Please read this instruction manual carefully before using to ensure the correct usage of this device.

Please keep this instruction manual for future reference.

Attention

- Please do not expose the CD-ROM to direct sunlight, heat, dust, magnet, and highly humid place.
- This software is protected by copyright law, reproduction or distribution of this program is strictly prohibited.

Operation Manual

① Hardware Setup

Please make sure that the thermocouple probe is connected to the digital thermometer and the USB cable to the USB port of your PC.

Connect USB (USB-01) to your PC and install driver software.

* Set the select switch of USB cable(USB-01) to the "PHOTO" position.

② Device preparation

Turn on the digital thermometer and press the REC. Button.

Verify by checking the display window, a REC display should be seen on the upper display portion.

③ Software Setup

Double click on the "Thermo Software" shortcut icon displayed on your desktop.

④ Option [Graph - Option] or

This button allows you to change the display settings of the graph as well as port number and alarm values.

⑤ Sampling Rate Setting [Sampling Rate]

This box lets you change the sampling rate of the software.

Please make sure that you set the sampling rate prior to starting the sampling process. Changing this value while sampling is in progress will restart the process.

⑥ Sampling Start

 This button starts the sampling process.

* Saving your data is highly recommended.

⑦ Sampling Stop

 This button allows you to pause the sampling process.


You can resume by pressing  button once again.

⑧ Sampling Clear

 This button lets you clear the graph and the data displayed in the table.

* Please be sure to save before removing data.

⑨ Data Save [File-Save(Save As)] or

[Save] or ...The save function allows you to save the recorded data to a file.

[Save As] ...The Save As function allows you to save the data to a new file.

* The save function saves only the data listed on the table.

⑩ Session End [File-Exit] or

- TC-950 and TC-850 types of thermometers are battery operated. If used excessively and the life span of battery is exceeded, please make sure to change the battery.
- The software and the digital thermometer are not synchronized, therefore instances where a time lag of about 1 second occurs.
- While the software is in sampling process please refrain from changing any settings on the digital thermometer.
- This software is not compatible with "Multiple units of measurement software" & "Connecting multiple units of the thermometer".

● Software Specification

Maximum Sample Data: 25,000data Sampling Time: 2-3,600s

Output data format: CSV(excel file format)

Display: Customizable graphical display Alarm: MAX/MIN

● Minimum System Requirements

·WindowsXP / WindowsVista / Windows7 ·CD-ROM drive or DVD-ROM drive

·At least 32MB of memory ·50MB available disk space ·VGA Display

·Visual Basic 6.0 Runtime

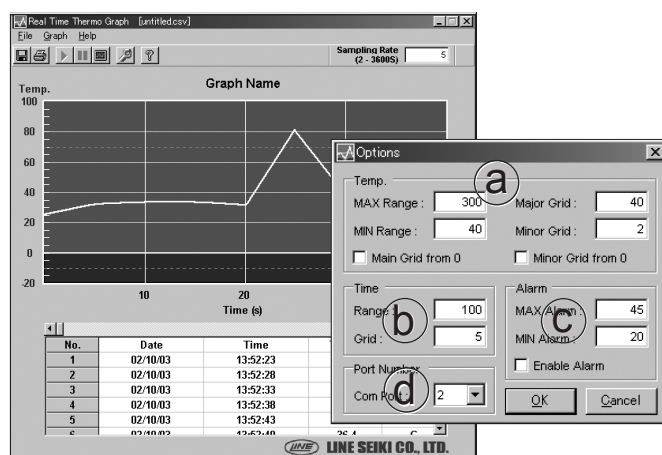
● INSTALLATION

Assuming you have a CD-ROM drive, insert your CD, double-click on "setup.exe" and click OK to start the installation.

● UNINSTALL

1. Go to add / remove programs on the control panel folder.

2. Select the "Thermo Software" on the list and click the remove button.



● Graph Title [Graph - Title]

This function lets you change the title of your program session.

The data you type in here will be printed out with the graph in case you opted to print it.

● Graph [Graph - Option] or

a.Temp

This option lets you change the maximum Temperature value the graph will display.

* The minimum value can be set up similarly.

[Major / Minor Grid] This option lets you change the value for which a Grid will be drawn.

b.Time

[Range] This option lets you change the value of the display width in seconds.

[Grid] This option lets you change the value for which a grid will be drawn in intervals of the value you have set.

c.Alarm

This option lets you change the value of the maximum alarm limit. If the temperature goes higher than this value you will hear several beeps while the temperature is above or equal to this value.

* The minimum value can be set up similarly.

d.Port Number

This option lets you select the port number where the device is connected.

● Print [File - Print] or

The print function will show the print dialog box and let you chose other settings inherent to the installed printer before printing the Graph.

● Help