

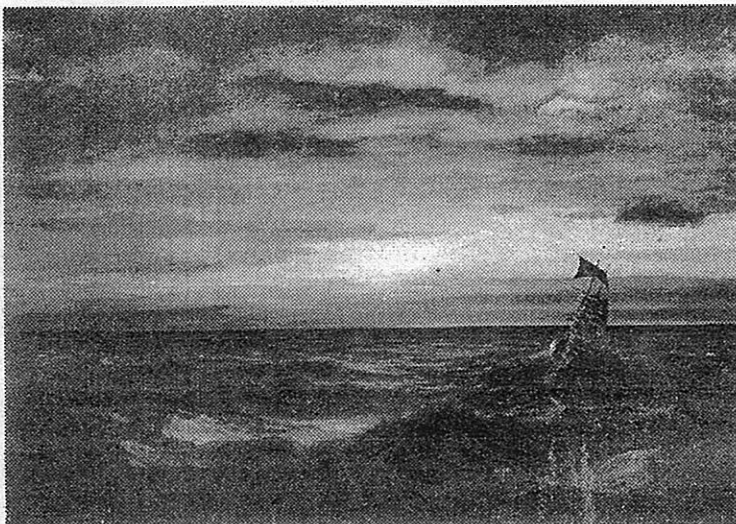
## Adelson Galleries To Present Majestic Works By Frederic Edwin Church

NEW YORK CITY — Adelson Galleries is presenting "Frederic Edwin Church: Romantic Landscapes and Seascapes" beginning Friday, January 18, and running until March 1.

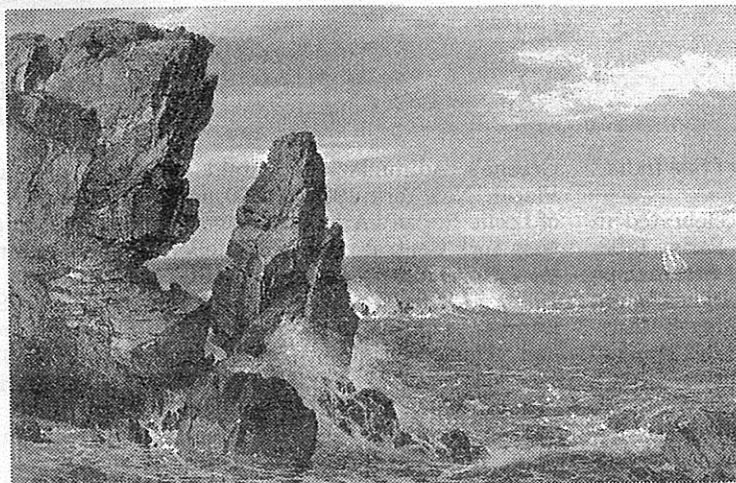
Frederic Edwin Church (1826–1900) is considered to be America's finest Nineteenth Century landscape painter, and during his career he crossed the globe painting scenes he so loved. "Frederic Edwin Church: Romantic Landscapes and Seascapes" is a loan exhibition of approximately 35 of these majestic works. A veritable illustrated travelogue showing scenes of New York, New England, Central and South America (he was the first notable artist to visit the continent), the Holy Land, Greece and Jamaica, landscape lovers will be able to travel back in time and see the places Church enjoyed.

The majority of the exhibited works are loaned from private collectors, who rarely display them publicly, as well as from museums, including The Metropolitan Museum of Art in New York; The Museum of Fine Arts, Houston; The Philadelphia Museum of Art; the Brooklyn Museum; Cooper-Hewitt National Design Museum, among others.

Among the highlights of the exhibition is "Coast Scene," 1852, which was executed during a time when Church was fascinated with marine views, and this oil on canvas represents a departure for him. In this work, the artist conveys tension in the foreground with waves crashing against large, jagged rocks, while beyond lies a calm sea and a small sailboat guided gently toward the horizon by the wind. In "Coast Scene," the viewer can almost feel the humid, salty, sea air cooling



**Frederic Edwin Church, "Marine — Sunset," 1881–82, oil on canvas, 30½ by 42 inches. Private collection.**



**Frederic Edwin Church (1826–1900), "Coast Scene," 1852, oil on canvas, 20 by 30 inches. Private collection.**

as the sun begins to descend.

Some experts believe the work pays homage to J.M.W. Turner (1775–1851), the English painter known for his vibrant and dramatic renderings of the sea.

Also on view will be "Marine — Sunset," 1881–82, one of the last major canvases the artist created for public exhibition before shifting his creative focus to the architecture

and landscape of his beloved home, Olana. Among a group of works left to Church's daughter after his death, "Marine — Sunset" descended in the artist's family until the 1960s, when it entered the private collection where it has since remained.

Adelson Galleries is at 19 East 82nd Street. For information, 212-439-6800 or [www.adelsongalleries.com](http://www.adelsongalleries.com).