

Kids Floral Cardigan

Difficulty Level



Materials

YARN

Patons 100% Cotton 4 ply Main Shade (01692) 100 gram balls

1 1 2 2 2

1 x 100 gram ball of same yarn in each of 1st Contrast (01701) and 2nd Contrast (01703) for embroidery

Quantities of yarn are approximate as they are based on average requirements.

Check actual yarn colour - as printing may not match yarn exactly.

NEEDLES

Pair each of 2½ mm (UK 12) and 3¼ mm (UK 10) needles.

BUTTONS

1 button.

TENSION

28 sts and 36 rows to 10 cm (stocking stitch) on 3¼ mm needles or size needed to achieve stated tension.

Check your tension before starting your garment. If there are too many stitches to 10 cm, your tension is tight and you should change to a larger size needle. If there are too few, your tension is loose and you should change to a smaller size needle. It is essential to work to the stated tension, and we cannot accept responsibility for the finished product if any yarn other than the specified yarn is used.

ABBREVIATIONS

alt=alternate; **beg**=beginning; **cont**=continue; **dec**=decrease by working 2 sts together; **foll**=following; **inc**=increase by working into front and back of st; **K**=knit; **meas**=measures; **P**=purl; **rem**=remain(ing); **rep**=repeat; **RS**=right side; **sL1K**=slip 1 knitways; **st(s)**=stitch(es); **stocking st**=1 row K, 1 row P; **tog**=together; **WS**=wrong side; **yfwd**=yarn forward; **o**=no stitch, time or row to be worked in this size; **cm**=centimetres; **in**=inches; **mm**=millimetres; **MS**=Main Shade; **1st C**=1st Contrast; **2nd C**=2nd Contrast.

Instructions are given for the first size, with larger sizes given in square brackets []. Where only one figure is given this applies to all sizes.

Size

To fit age, approx

	0-3	3-6	6-12	1-2	3-4	Yrs
To fit chest						
	41	46	51	56	61	cm
	16	18	20	22	24	in




Actual size

	45	51	56	62	68	cm
	17½	20	22	24½	27	in
Finished length						
	19	23	26	30	34	cm
	7½	9	10	12	13½	in
Sleeve length to underarm						
	14	17	21	25	29	cm
	5½	6½	8½	10	11½	in

Instructions

BACK

With 3¼ mm needles and MS, cast on 63 [71, 79, 87, 95] sts. Starting with a K row, work in stocking st for 8 [18, 26, 36, 46] rows, ending with RS facing for next row.

Shape armholes

Cast off 3 sts at beg of next 2 rows (57 [65, 73, 81, 89] sts). Dec 1 st at each end of next 3 [3, 5, 5, 7] rows, then on foll 3 [4, 3, 4, 3] alt rows (45 [51, 57, 63, 69] sts). Cont straight until armhole meas 10 [11, 12, 13, 14] cm, ending with RS facing for next row.

Shape shoulders

Cast off 3 [4, 5, 5, 6] sts at beg of next 4 rows, then 4 [4, 4, 6, 6] sts at beg of foll 2 rows.

Cast off rem 25 [27, 29, 31, 33] sts.

LEFT FRONT

With 3¼ mm needles and MS, cast on 26 [22, 20, 16, 12] sts. Starting with a K row, work in stocking st thus:

Work 1 row, ending with WS facing for next row.

Inc 1 st at beg of next row and at same edge on foll 3 [9, 13, 19, 25]

rows, then on foll 1 [3, 5, 7, 9] alt rows (31 [35, 39, 43, 47] sts).
Work 1 row, ending with RS facing for next row.

Shape armhole

Cast off 3 sts at beg of next row (28 [32, 36, 40, 44] sts).
Work 1 row.

Shape front slope

Dec 1 st at armhole edge of next 3 [3, 5, 5, 7] rows, then on foll 3 [4, 3, 4, 3] alt rows and at same time dec 1 st at front slope edge of next and every foll alt row (17 [19, 22, 24, 27] sts).

Dec 1 st at front slope edge only on 2nd and foll 5 [4, 4, 4, 4] alt rows, then on 1 [2, 3, 3, 4] foll 4th rows (10 [12, 14, 16, 18] sts).

Cont straight until Left Front matches Back to start of shoulder shaping,

ending with RS facing for next row.

Shape shoulder

Cast off 3 [4, 5, 5, 6] sts at beg of next and foll alt row.

Work 1 row.

Cast off rem 4 [4, 4, 6, 6] sts.

RIGHT FRONT

Work to match Left Front, reversing shapings, working an extra row before start of armhole and shoulder shaping.

SLEEVES

With 3¼ mm needles and MS, cast on 45 [45, 47, 51, 55] sts.

Starting with a K row, work in stocking st, shaping sides by inc 1 st at each end of 5th [3rd, 3rd, 3rd, 3rd] and every foll 4th row until there are 53 [59, 65, 61, 59] sts.

56 and 61 cm sizes only: Inc 1 st at each end of every foll 6th row until there are [71, 77] sts.

All sizes: Cont straight until Sleeve meas 7 [10, 14, 19, 22] cm, ending with RS facing for next row.

Shape top

Cast off 3 sts at beg of next 2 rows (47 [53, 59, 65, 71] sts).

Dec 1 st at each end of next 5 rows, then on foll 6 [5, 4, 3, 2] alt rows, then on every foll row until 11 sts rem, ending with RS facing for next row.

Cast off rem 11 sts.

MAKE UP

Press ball band.

Join shoulder seams. Join side seams.

Body Trim

With 2¼ mm needles and MS, cast on 13 sts.

Row 1 – (RS), sL1K, K1, yfwd, K2tog, K5, yfwd, K2tog, yfwd, K2 (14 sts).

Row 2 and every foll alt row – Yfwd, K2tog, K to end.

Row 3 – sL1K, K1, yfwd, K2tog, K4, (yfwd, K2tog) twice, yfwd, K2 (15 sts).

Row 5 – sL1K, K1, yfwd, K2tog, K3, (yfwd, K2tog) 3 times, yfwd, K2 (16 sts).

Row 7 – sL1K, K1, yfwd, K2tog, K2, (yfwd, K2tog) 4 times, yfwd, K2 (17 sts).

Row 9 – sL1K, K1, yfwd, K2tog, K1, (yfwd, K2tog) 5 times, yfwd, K2 (18 sts).

Row 11 – sL1K, K1, yfwd, K2tog, K1, K2tog, (yfwd, K2tog) 5 times, K1 (17 sts).

Row 13 – sL1K, K1, yfwd, K2tog, K2, K2tog, (yfwd, K2tog) 4 times, K1 (16 sts).

Row 15 – sL1K, K1, yfwd, K2tog, K3, K2tog, (yfwd, K2tog) 3 times, K1 (15 sts).

Row 17 – sL1K, K1, yfwd, K2tog, K4, K2tog, (yfwd, K2tog) twice, K1 (14 sts).

Row 19 – sL1K, K1, yfwd, K2tog, K5, K2tog, yfwd, K2tog, K1 (13 sts).

Row 20 – As row 2.

These 20 rows form patt.

Cont in patt until Trim, unstretched, fits around entire hem, front opening and neck edge of Back and Fronts, starting and ending at base of left side seam, sewing in place as you go along and easing in Trim so that it lays flat, ending after patt row 20 and with RS facing for next row.

Cast off.

Join cast-on and cast-off edges of Trim.

Cuff Trims (Both alike)

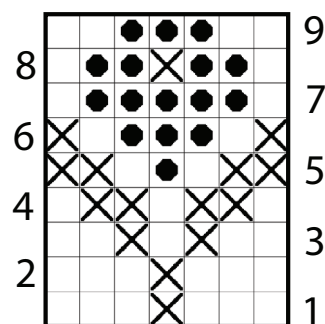
Work as for Body Trim, making a strip that fits neatly across cast-on edge of Sleeve and sewing in place as you go along.

Join Sleeve and Sleeve Trim seams.

Insert Sleeves.

Using photograph as a guide and following diagram, swiss darn flowers onto Fronts and Back and around lower edge of Sleeves.

Attach button to left front opening edge, using one eyelet hole of Body Trim along right front opening edge as a buttonhole.



KEY

□ = MS

⊗ = swiss darn using 2nd C

● = swiss darn using 1st C