

2.0 AIRPLANE DESCRIPTION

2.1 General Characteristics

2.2 General Dimensions

2.3 Ground Clearances

2.4 Interior Arrangements

2.5 Cabin Cross Sections

2.6 Lower Cargo Compartments

2.7 Door Clearances

2.0 AIRPLANE DESCRIPTION

2.1 General Characteristics

Maximum Design Taxi Weight (MTW). Maximum weight for ground maneuver as limited by aircraft strength and airworthiness requirements. (It includes weight of taxi and run-up fuel.)

Maximum Design Landing Weight (MLW). Maximum weight for landing as limited by aircraft strength and airworthiness requirements.

Maximum Design Takeoff Weight (MTOW). Maximum weight for takeoff as limited by aircraft strength and airworthiness requirements. (This is the maximum weight at start of the takeoff run.)

Operating Empty Weight (OEW). Weight of structure, powerplant, furnishing systems, unusable fuel and other unusable propulsion agents, and other items of equipment that are considered an integral part of a particular airplane configuration. Also included are certain standard items, personnel, equipment, and supplies necessary for full operations, excluding usable fuel and payload.

Maximum Design Zero Fuel Weight (MZFW). Maximum weight allowed before usable fuel and other specified usable agents must be loaded in defined sections of the aircraft as limited by strength and airworthiness requirements.

Maximum Payload. Maximum design zero fuel weight minus operational empty weight.

Maximum Seating Capacity. The maximum number of passengers specifically certificated or anticipated for certification.

Maximum Cargo Volume. The maximum space available for cargo.

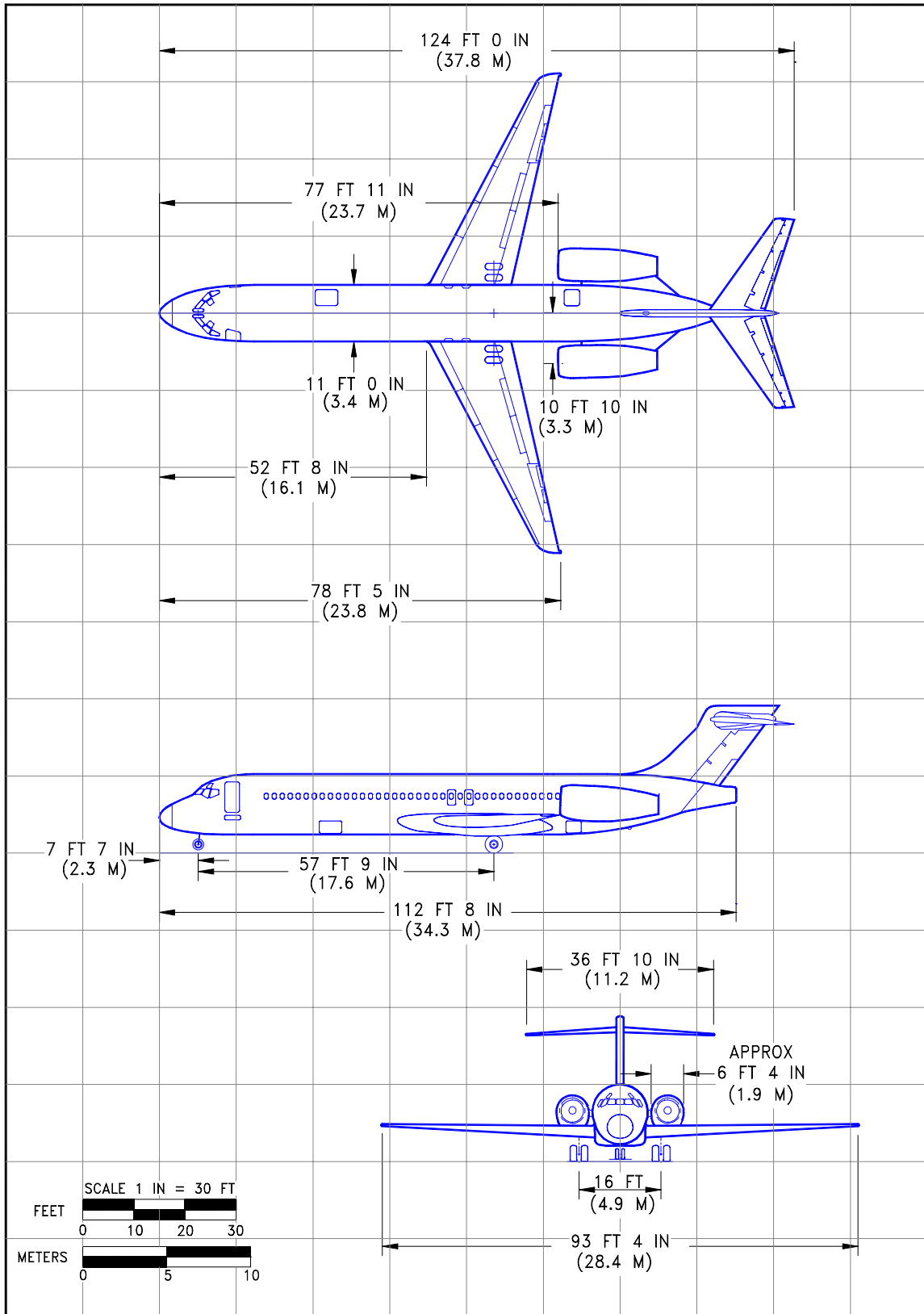
Usable Fuel. Fuel available for aircraft propulsion.

CHARACTERISTICS	UNITS	BASIC AIRPLANE				HIGH GROSS WEIGHT OPTION
MAX DESIGN TAXI WEIGHT	POUNDS	111,000	115,000	117,000	119,000	122,000
	KILOGRAMS	50,349	52,163	53,070	53,977	55,338
MAX DESIGN TAKEOFF WEIGHT	POUNDS	110,000	114,000	116,000	118,000	121,000
	KILOGRAMS	49,895	51,709	52,617	53,524	54,884
MAX DESIGN LANDING WEIGHT	POUNDS	100,000	102,000	102,000	102,000	110,000
	KILOGRAMS	45,362	46,269	46,269	46,269	49,898
MAX DESIGN ZERO FUEL WEIGHT	POUNDS	94,000	96,000	96,000	96,000	100,500
	KILOGRAMS	42,638	43,545	43,545	43,545	45,586
SPEC OPERATING EMPTY WEIGHT (1)	POUNDS	67,500	67,500	67,500	67,500	68,500
	KILOGRAMS	30,617	30,617	30,617	30,617	31,071
MAX STRUCTURAL PAYLOAD	POUNDS	26,500	28,500	28,500	28,500	32,000
	KILOGRAMS	12,020	12,928	12,928	12,928	14,515
SEATING CAPACITY	MIXED CLASS	106	106	106	106	106
MAX CARGO - LOWER DECK	CUBIC FEET	935	935	935	935	730
	CUBIC METERS	26.5	26.5	26.5	26.5	20.7
USABLE FUEL	US GALLONS	3,673	3,673	3,673	3,673	4,403(2)
	LITERS	13,903	13,903	13,903	13,903	16,665(2)
	POUNDS	24,609	24,609	24,609	24,609	29,500(2)
	KILOGRAMS	11,163	11,163	11,163	11,163	13,382(2)

- NOTES: (1) TYPICAL SPEC OPERATING WEIGHT FOR A CONFIGURATION OF 106 PASSENGERS.
CONSULT WITH AIRLINE FOR SPECIFIC WEIGHTS AND CONFIGURATIONS.
DELIVERED AIRPLANES MAY HAVE DIFFERENT WEIGHTS DEPENDING ON AIRLINE REQUIREMENT.
- (2) INCLUDES OPTIONAL FWD 460 GAL AND AFT 270 GAL AUX FUEL TANKS.

2.1 GENERAL CHARACTERISTICS

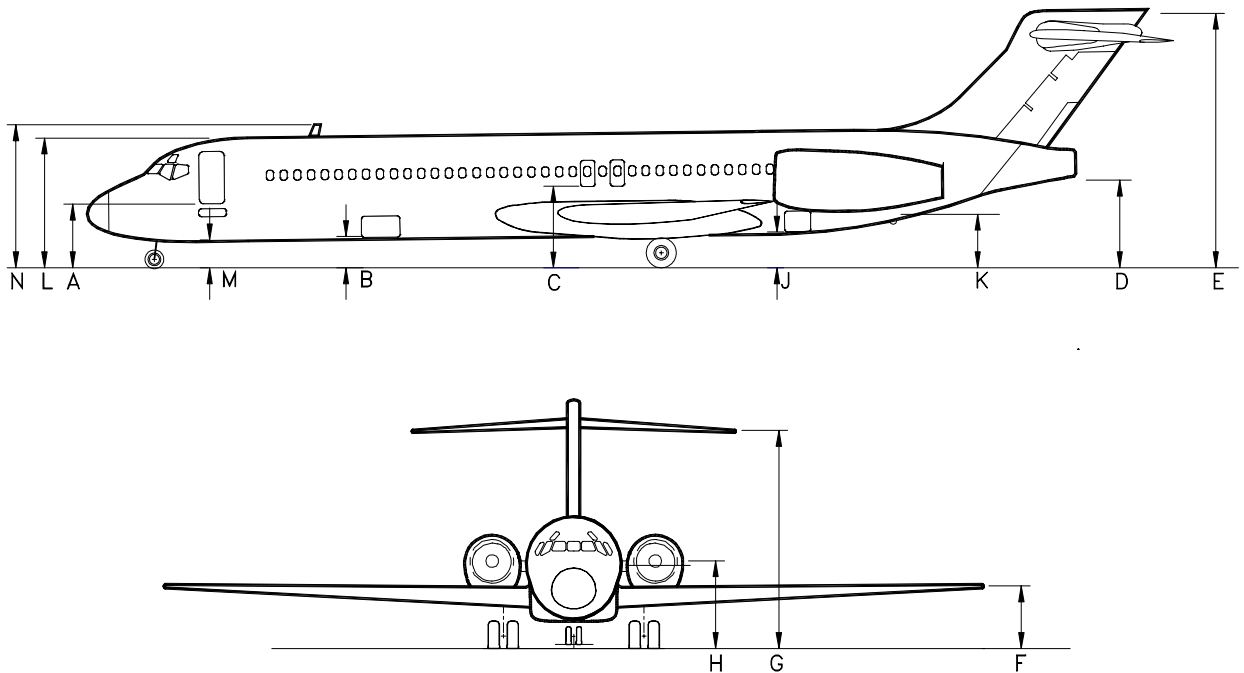
MODEL 717-200



2.2 GENERAL DIMENSIONS

MODEL 717-200

D6-58330

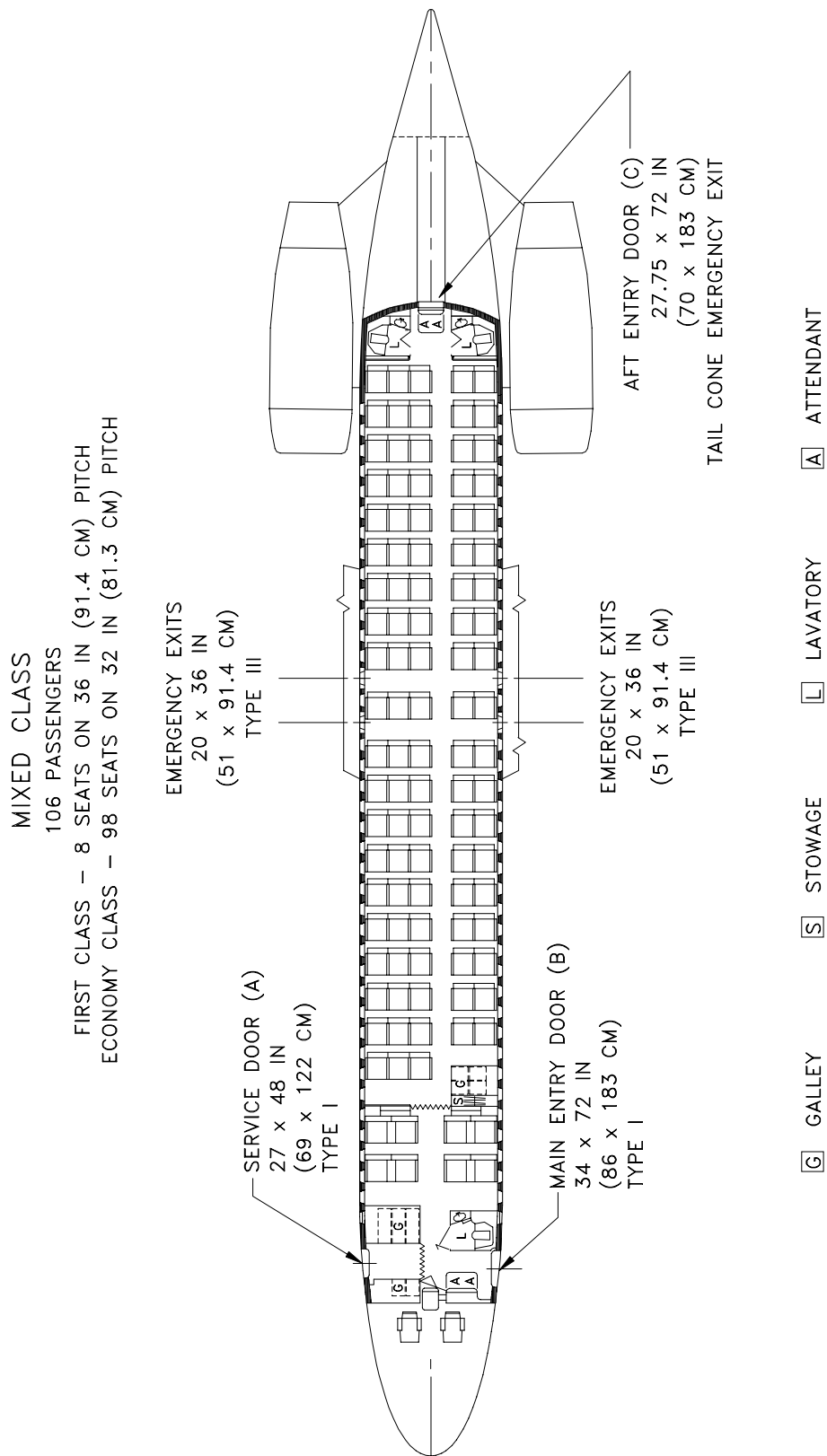


	MINIMUM		MAXIMUM	
	FEET - INCHES	METERS	FEET - INCHES	METERS
A	7-3	2.2	8-1	2.5
B	3-7	1.1	4-3	1.3
C	9-1	2.8	9-5	2.9
D	9-9	3.0	10-7	3.2
E	28-9	8.8	29-8	9.0
F	7-2	2.2	7-8	2.3
G	25-2	7.7	26-1	7.9
H	9-8	2.9	10-3	3.1
J	3-10	1.2	4-5	1.3
K	6-0	1.8	6-7	2.0
L	14-10	4.5	15-7	4.8
M	3-0	0.9	3-9	1.1
N	16-4	5.0	17-1	5.2

NOTES: VERTICAL CLEARANCES SHOWN OCCUR DURING MAXIMUM VARIATIONS OF AIRPLANE ATTITUDE. COMBINATIONS OF AIRPLANE LOADING AND UNLOADING ACTIVITIES THAT PRODUCE THE GREATEST POSSIBLE VARIATIONS IN ATTITUDE WERE USED TO ESTABLISH THE VARIATIONS SHOWN. DURING ROUTINE SERVICING, THE AIRPLANE REMAINS RELATIVELY STABLE, PITCH AND ELEVATION CHANGES OCCURRING SLOWLY.

2.3 GROUND CLEARANCES

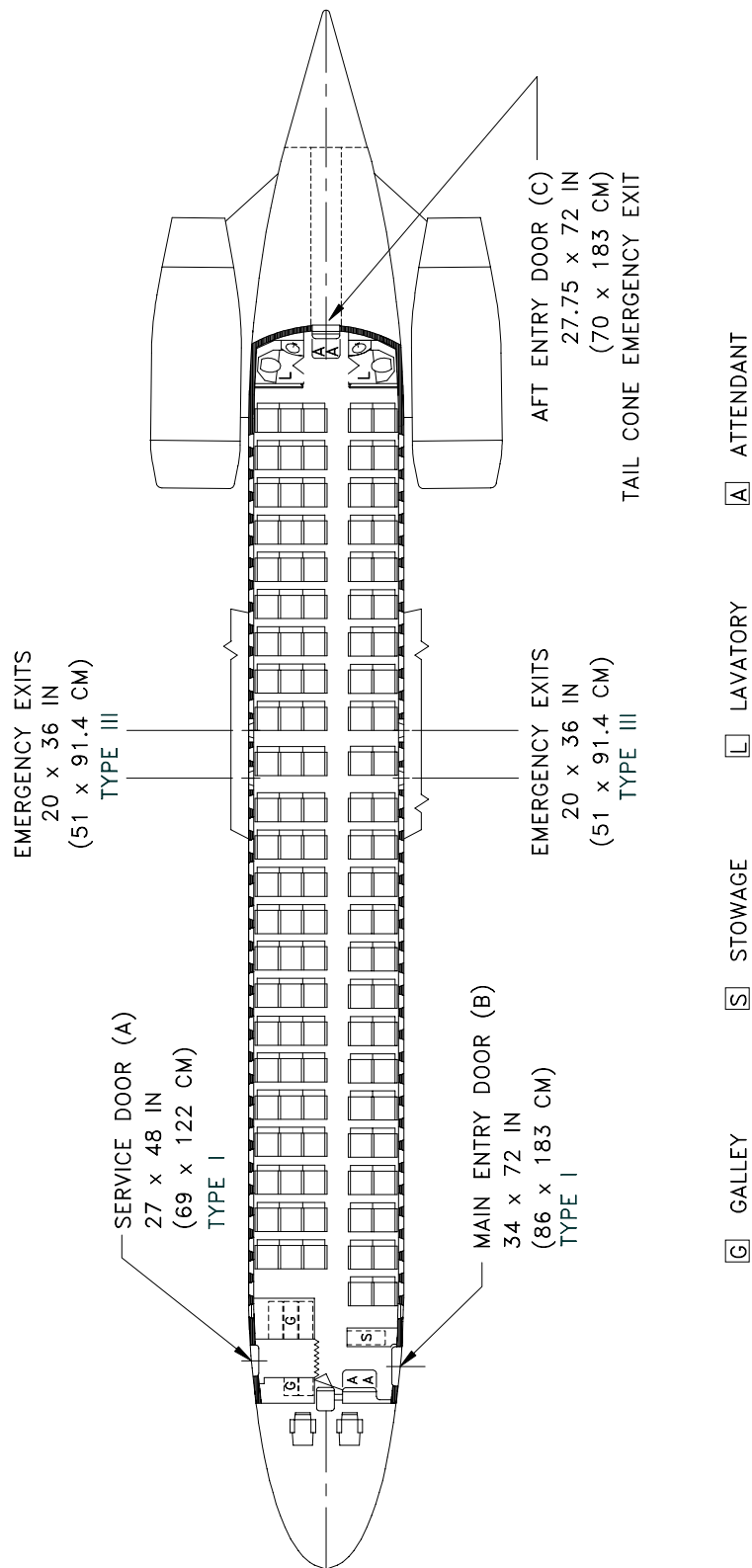
MODEL 717-200



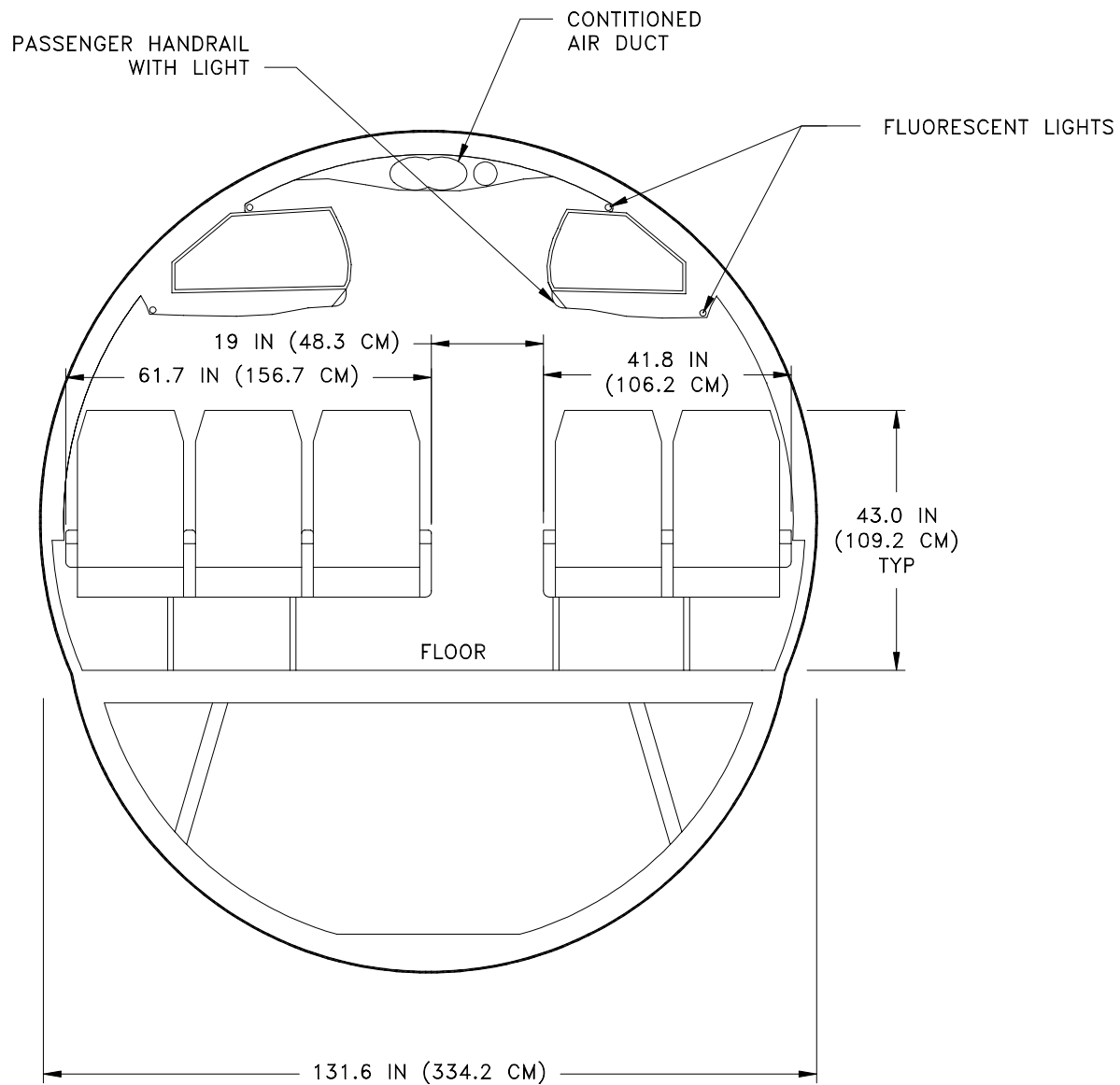
2.4.1 INTERIOR ARRANGEMENTS - MIXED CLASS CONFIGURATION

MODEL 717-200

ALL ECONOMY CLASS
117 PASSENGERS, 5-ABREAST SEATING ON 32 IN (81.3 CM) PITCH



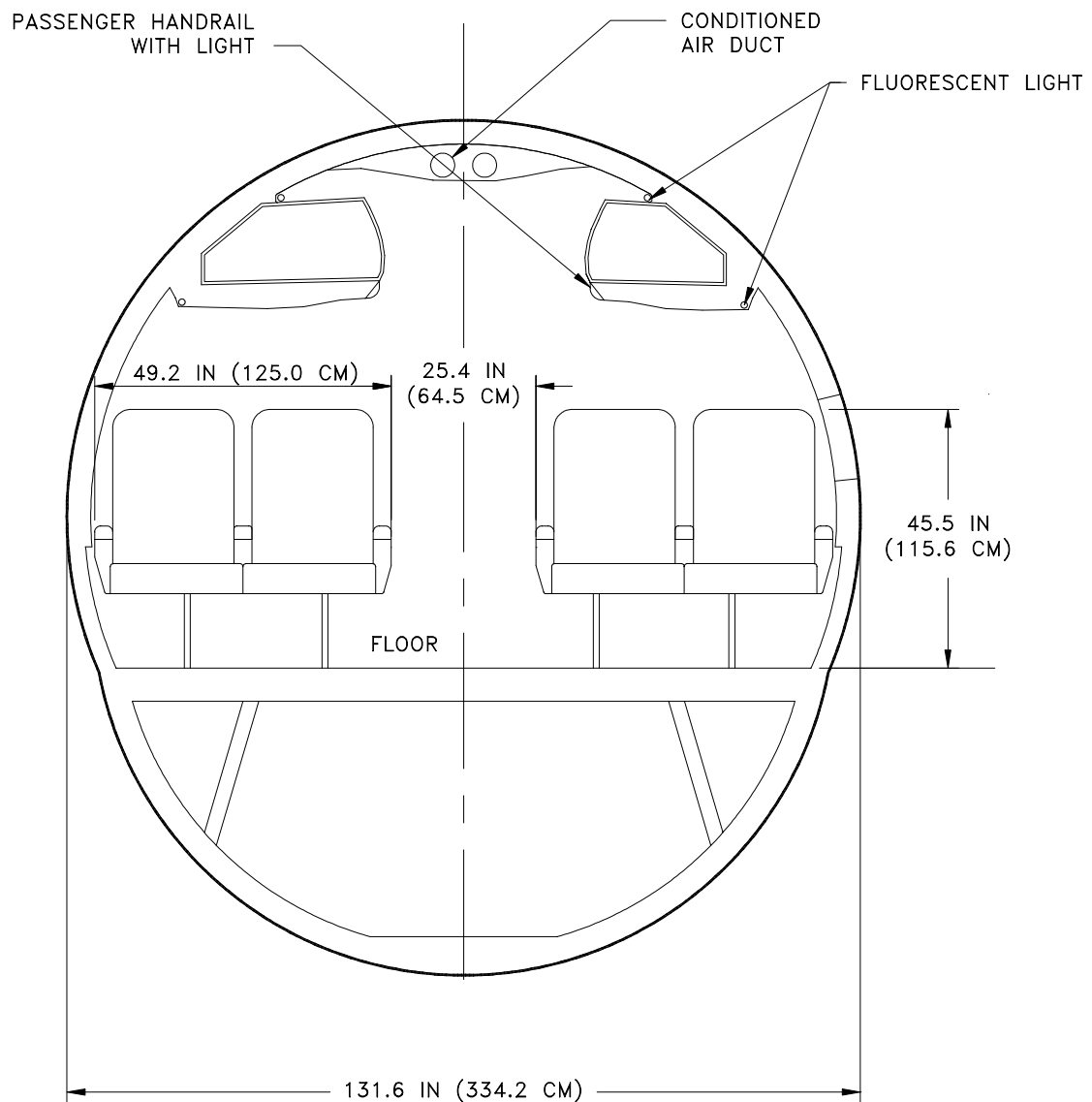
2.4.2 INTERIOR ARRANGEMENTS - ALL ECONOMY CONFIGURATION
MODEL 717-200



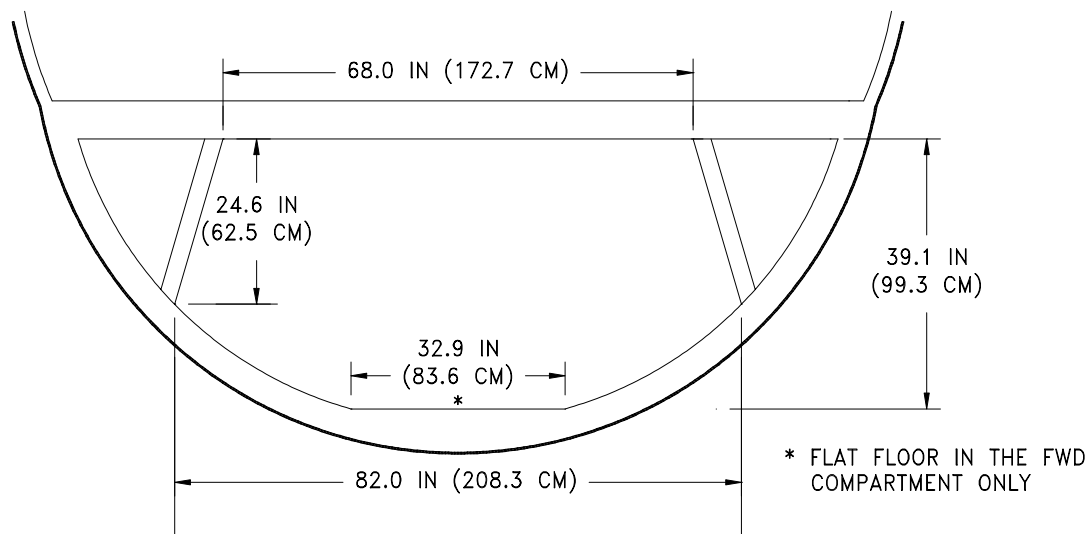
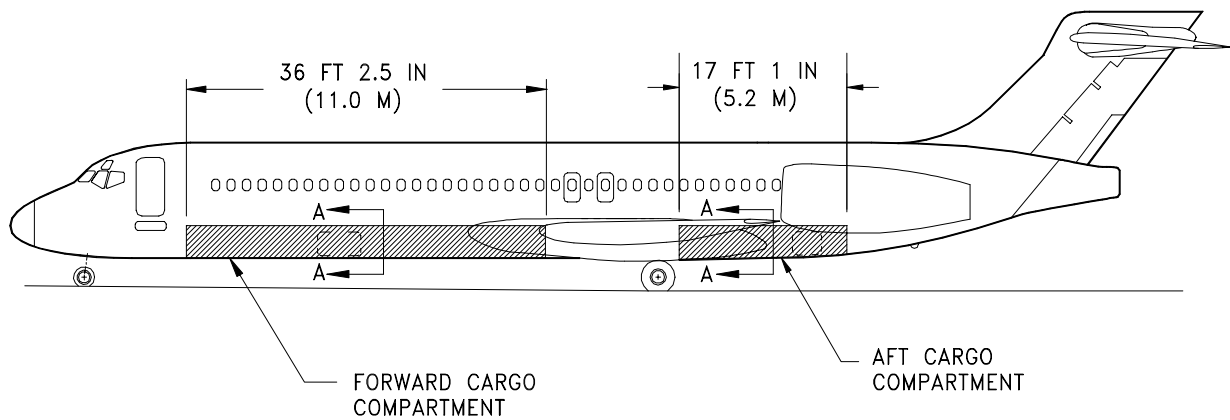
2.5.1 CABIN CROSS-SECTION - COACH SEATS

MODEL 717-200

D6-58330



2.5.2 CABIN CROSS-SECTION - FIRST CLASS SEATS
MODEL 717-200



SECTION A-A

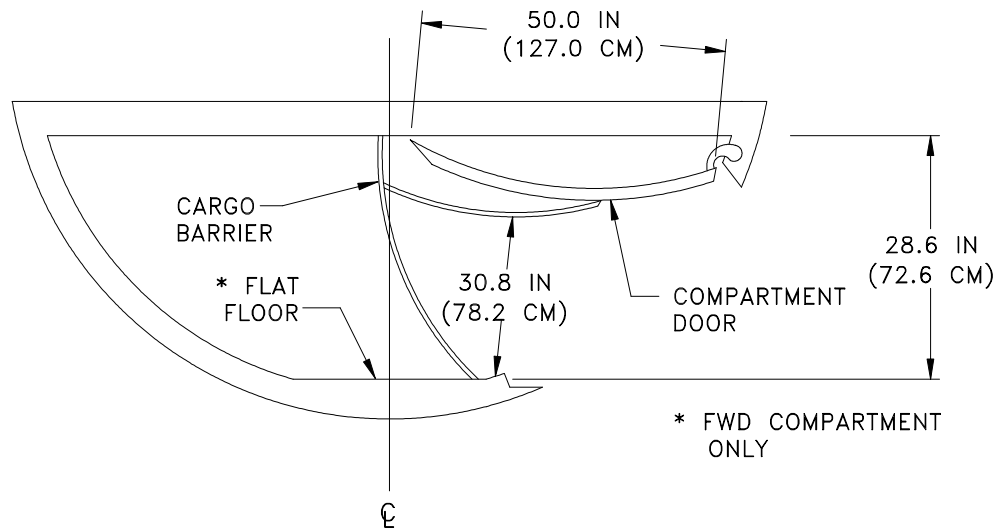
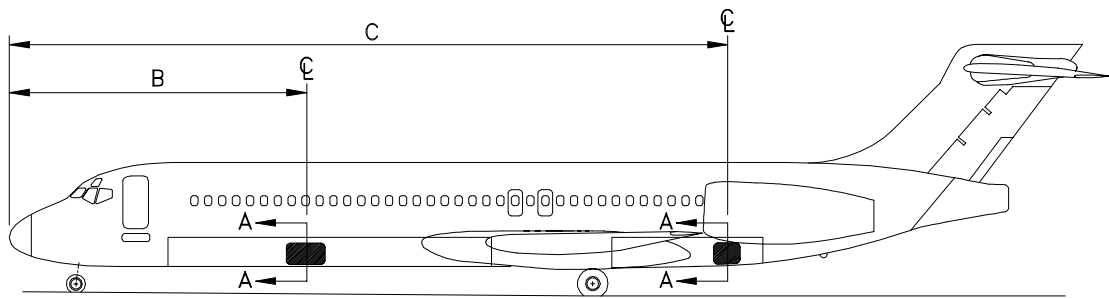
MODEL	FORWARD CARGO COMPARTMENT	AFT CARGO COMPARTMENT	TOTAL BULK CARGO
717-200 BASIC	646 CU FT (18.3 CU M)	289 CU FT (8.2 CU M)	935 CU FT (26.5 CU M)
717-200 HGW **	527 CU FT (14.9 CU M)	203 CU FT (5.7 CU M)	730 CU FT (20.7 CU M)

** SMALLER CAPACITIES FOR THE 717-200 HGW AIRPLANE ACCOUNT FOR THE OPTIONAL AUXILIARY FUEL TANKS IN THE FORWARD AND AFT COMPARTMENTS.

2.6 LOWER CARGO COMPARTMENTS - BULK CARGO CAPACITIES

MODEL 717-200

D6-58330

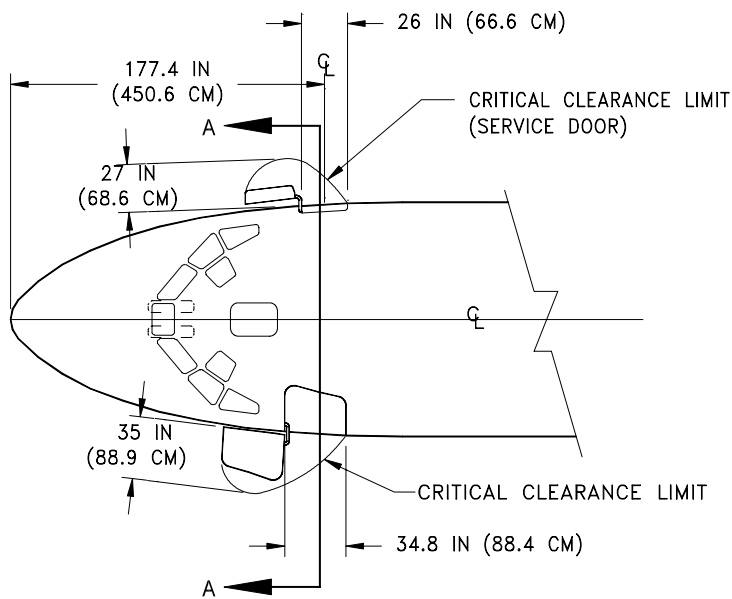


SECTION A - A

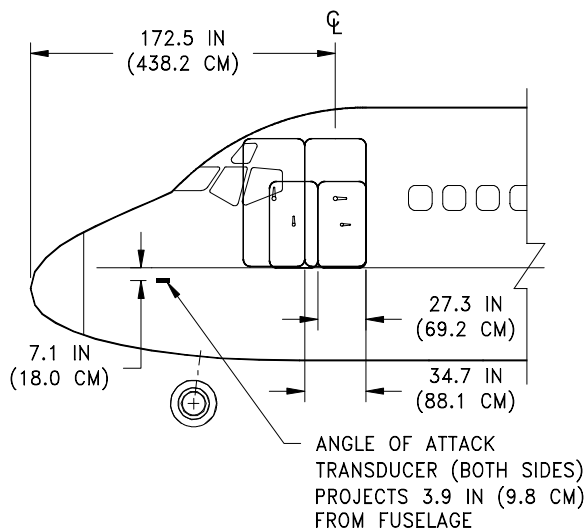
DOOR TYPE	DOOR SIZE	DISTANCE AFT OF NOSE TO DOOR CENTERLINE
FWD CARGO DOOR	53 x 50 IN (1.35 x 1.27 M)	(B) 32 FT 7.5 IN (9.9 M)
AFT CARGO DOOR	36 x 50 IN (0.91 x 1.27 M)	(C) 80 FT 7.0 IN (24.6 M)

2.7.1 FORWARD AND AFT CARGO DOOR CLEARANCES

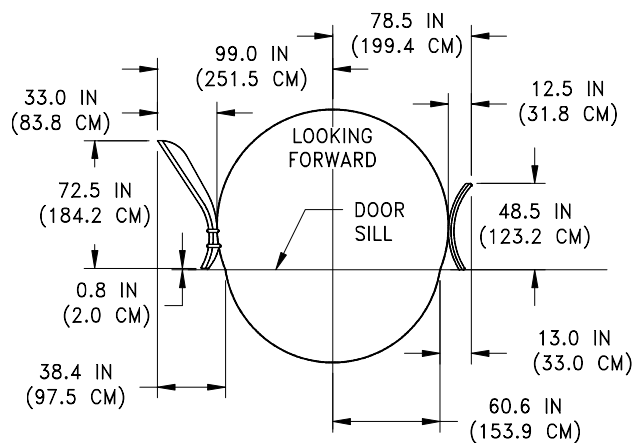
MODEL 717-200



PARTIAL PLAN



PARTIAL ELEVATION

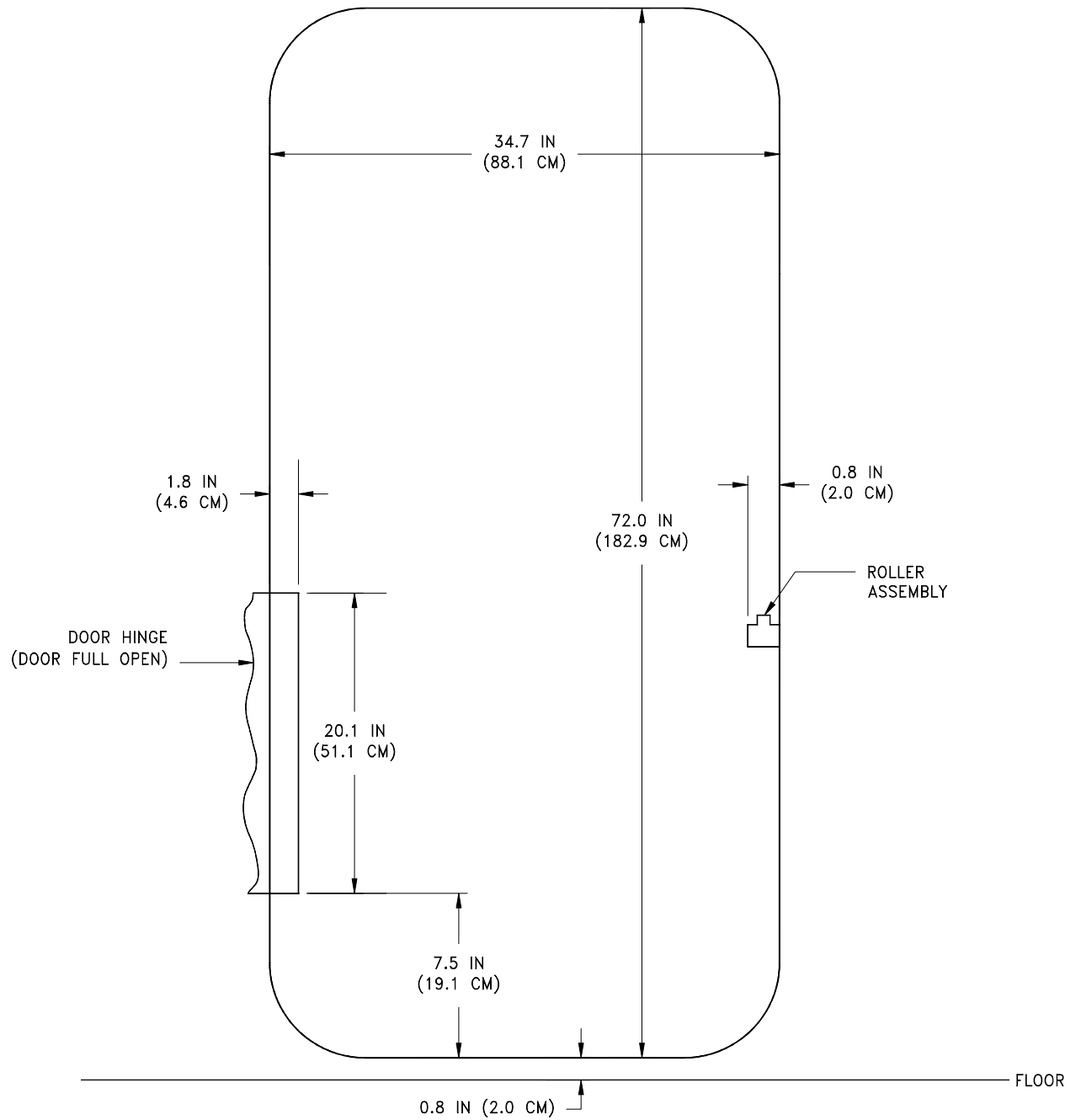


SECTION A - A

2.7.2 DOOR CLEARANCES

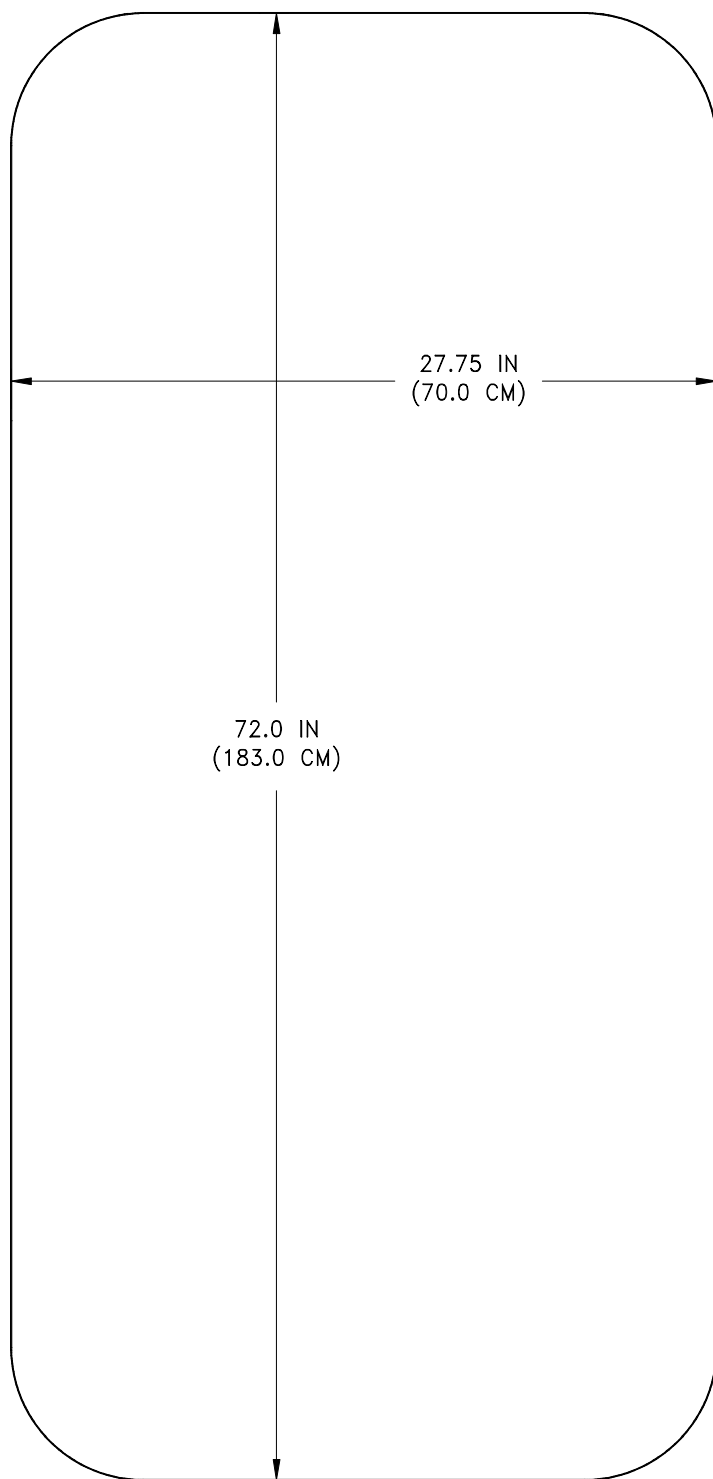
MODEL 717-200

D6-58330

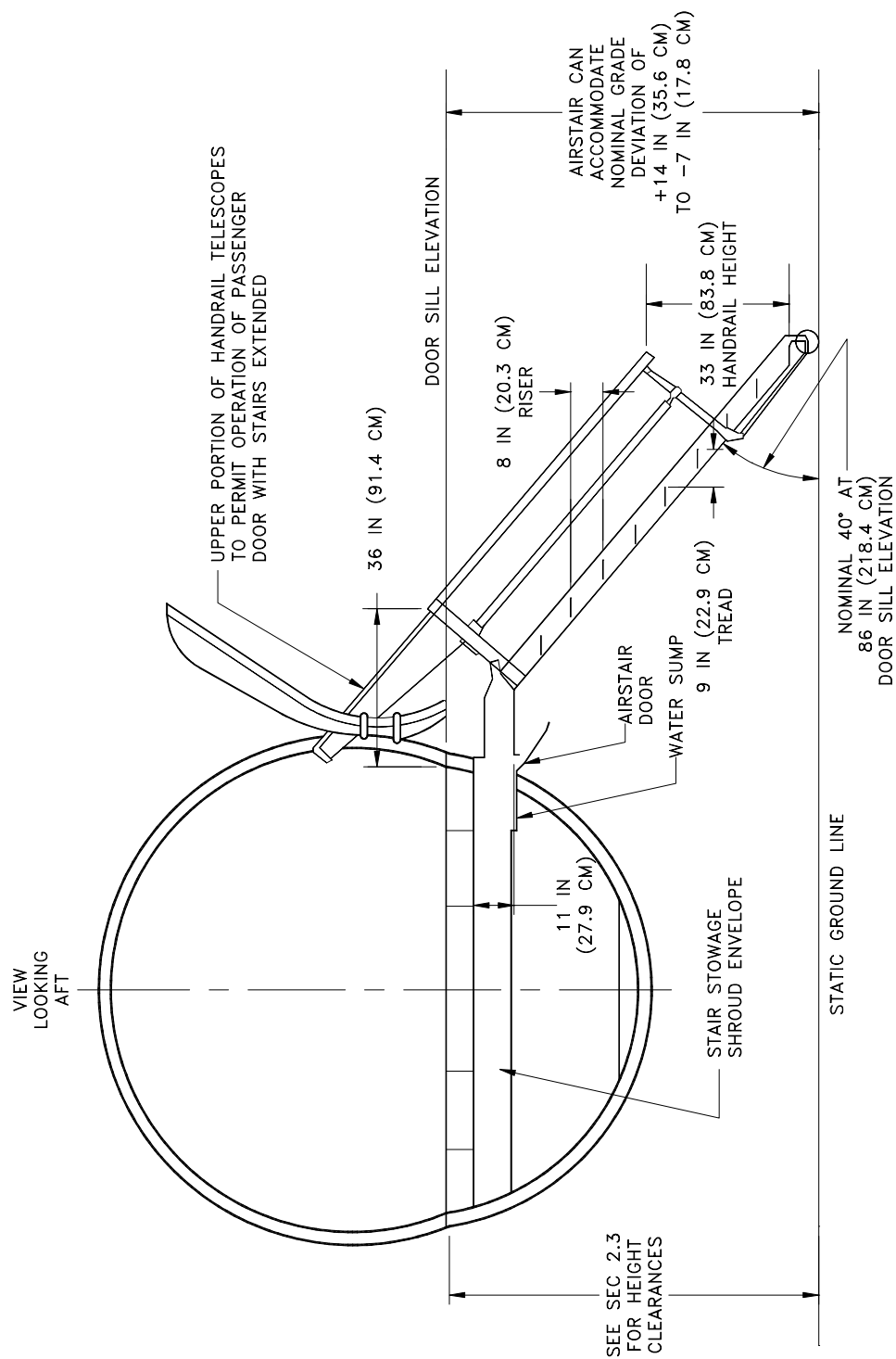


2.7.3 DOOR CLEARANCES - FORWARD PASSENGER DOOR OPENING CLEARANCES

MODEL 717-200



2.7.4 DOOR CLEARANCES - AFT PRESSURE BULKHEAD DOOR OPENING CLEARANCES
MODEL 717-200



2.7.5 DOOR CLEARANCES – OPTIONAL FORWARD AIRSTAIR

MODEL 717-200

THIS PAGE INTENTIONALLY LEFT BLANK