

# Suites

Hôtel Plaza Athénée, *Paris*

)( *Dorchester Collection*

# Hôtel Plaza Athénée

## *Avenue Montaigne, Paris*

An introduction to the hotel

Royal Suite

Terrace Eiffel Suite 868

Eiffel Suite 888

Eiffel Suite 750

Eiffel Suite 361

Presidential Suite

Prestige Suite

Deluxe Suite

Superior Suite

Prestige Junior Suite

Deluxe Junior Suite

Junior Suite

Since 1913, the Hôtel Plaza Athénée has welcomed to Paris the most high-profile and distinguished guests in the world, including Grace Kelly, Gary Cooper, Jackie Kennedy, Mariah Carey, Monica Bellucci or Natalie Portman. The hotel is wonderfully located on the Avenue Montaigne, a few steps from the Avenue des Champs Élysées and the banks of the River Seine. With its signature “Plaza Red” decorative theme, it exudes Parisian chic, classic tradition and incomparable charm.

In addition to the 148 guest rooms, the Plaza Athénée offers 46 suites, which showcase French taste at its most refined. From the Louis XVI or Art Deco-styled Junior Suites to the magnificent Eiffel Suites, there is unforgettable luxury, space and comfort. The antique-filled Royal Suite sets a new level of opulence. All the suites have beautiful marble bathrooms and several can be connected to additional rooms.

All the suites at the Hôtel Plaza Athénée are equipped with technology of the highest quality, including plasma screens, high-speed internet access, DVD and multiple telephone lines.





## Royal Suite

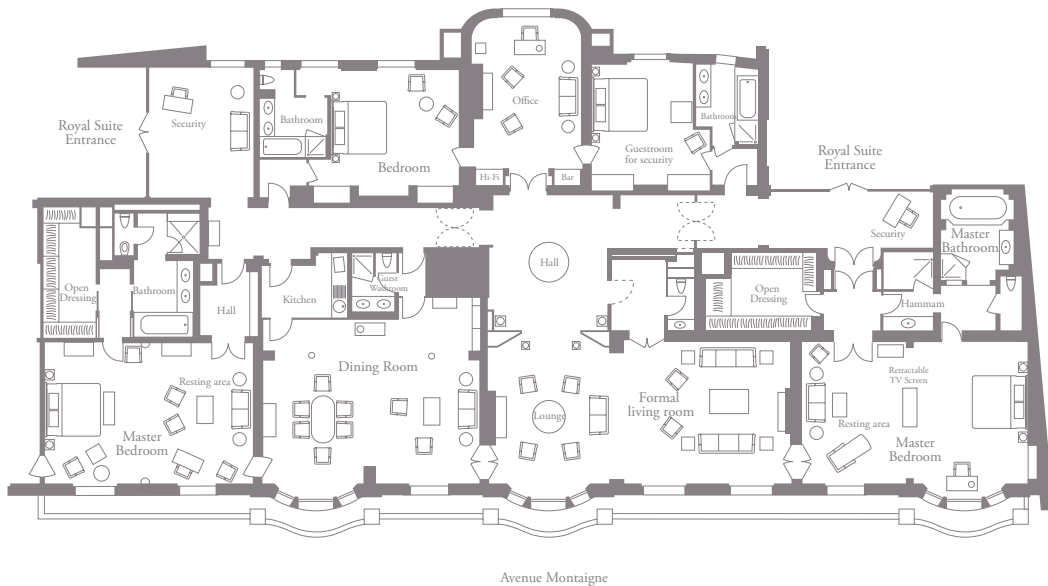
The Royal Suite is a four-bedroom apartment of exceptional grace and style, situated on the fifth floor of the Hotel Plaza Athénée. The breathtaking furnishings evoke the style and luxury of an 18th century Parisian palace.

From the ample private hall to the magnificent reception room and dining room, there are fabrics, antiques and individual touches to delight the eye. The two master bedrooms have comfortable sitting areas and dressing rooms. The four bathrooms are tiled entirely in Italian marble.

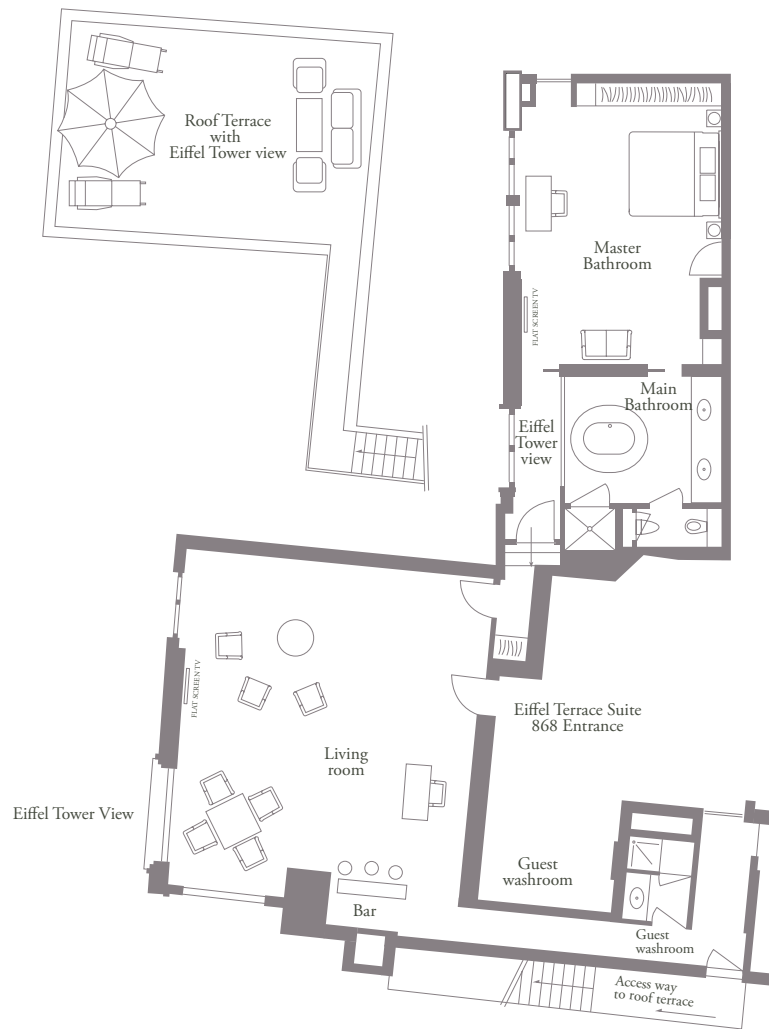
The luxury and elegance have been combined with high-tech features such as flat screen televisions in all the rooms, sometimes concealed in the mirrors. Among them are four 3D televisions, including two 85-inch screens!

The Royal Suite overlooks the hotel's picturesque courtyard and offers great views of Avenue Montaigne from the balcony.

Dimensions: 450 square metres / 4,840 square feet







## Terrace Eiffel Suite 868

The magnificent Eiffel Terrace Suite 868 is one of the *pièces de résistance* at the Hôtel Plaza Athénée. From the bedroom to the sitting room to the bathroom, there are large picture windows with unique views of the majestic Eiffel Tower, which seems to become part of the suite.

Decoration mixes original Art Deco pieces and specially designed new furnishings, using different woods to create a magical atmosphere. There is a large sitting room with separate dining area, a stunning master bedroom with ensuite marble bathroom and a separate guest powder room. To crown the suite, steps lead up the breathtaking roof terrace.

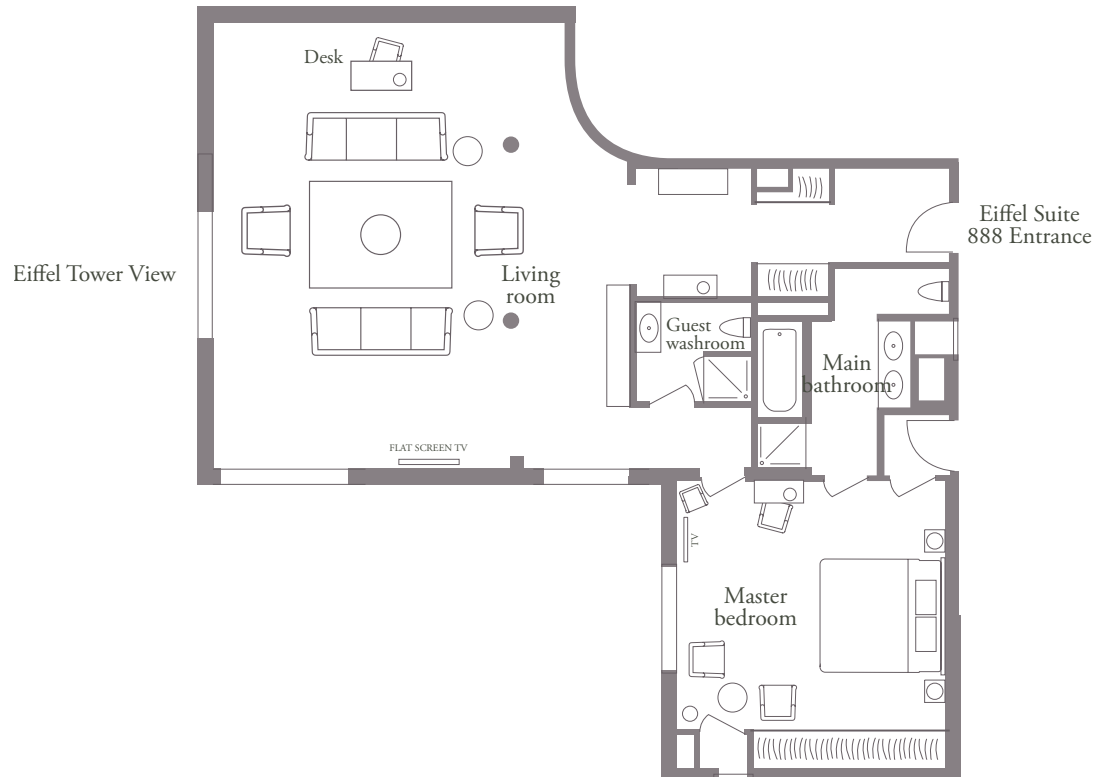
The Eiffel Terrace Suite is situated on the eighth floor and offers incomparable 360° views of the Parisian skyline: the Eiffel Tower itself, the River Seine and the city's rooftops.

This suite may be connected to the Eiffel Suite 888 and a Deluxe Room.

Dimensions: 130 square metres / 1,400 square feet







## Eiffel Suite 888

The highlight of Eiffel Suite 888 is, as the name suggests, its wonderful views of the Eiffel Tower and the romantic Parisian skyline.

The interior features a striking combination of fine woods, silks and linen with fine black-and-white photography, creating an ambience of calm and high quality.

The suite consists of a large sitting room and master bedroom, furnished in Art Déco period of great style and charm. As well as the master bathroom there is a dressing room and a separate guest washroom.

This may be connected with the Eiffel Terrace Suite 868, if additional accommodation is required.

Dimensions: 100 square metres / 1,076 square feet





## Eiffel Suite 750

Eiffel Suite 750 is a highly individual duplex apartment on the seventh floor and is the largest of the Art Déco suites at the Hôtel Plaza Athénée. The atmosphere of luxury and glamour is perhaps more contemporary and masculine than the others.

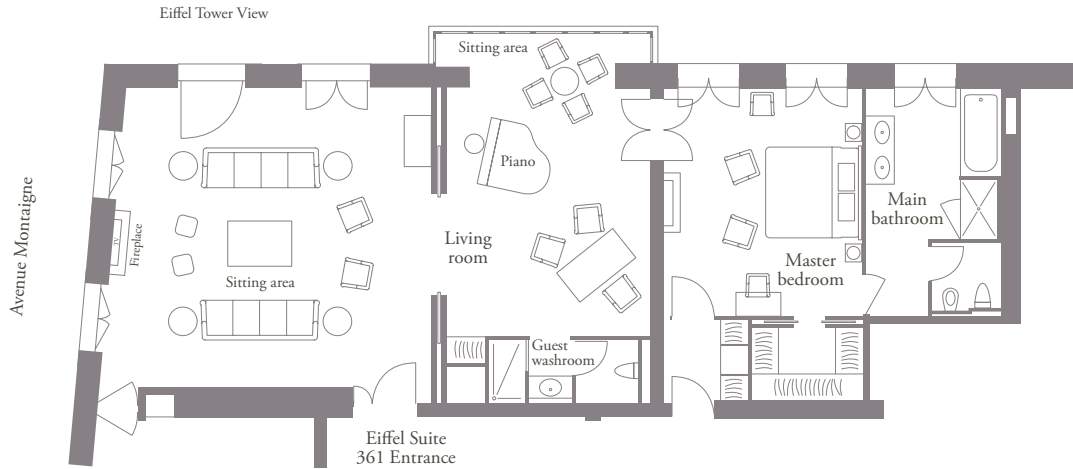
On the lower level are the living quarters, with entrance hall, spacious sitting room, dining area and guest powder room. The upper level includes the luxurious master bedroom and a wonderful terrace. It also boasts its own sauna and gym, enabling guests to exercise and relax in total privacy.

From the terrace of Eiffel Suite 750 there is a glorious view of the Eiffel Tower and a majestic 180° panorama of the whole of Paris.

This suite may be connected to a Deluxe Junior Suite, if additional accommodation is required.

Dimensions: 98 square metres / 1,054 square feet





## Eiffel Suite 361

Eiffel Suite 361 is furnished in classic Haussmannesque style, with rich, vibrant fabrics and a grand yet welcoming atmosphere.

This high-ceilinged one-bedroom suite is made up of a master bedroom with a large ensuite bathroom and dressing room, an immense living room and a sitting room which features a piano and writing desk. There is also a guest bathroom in the sitting room.

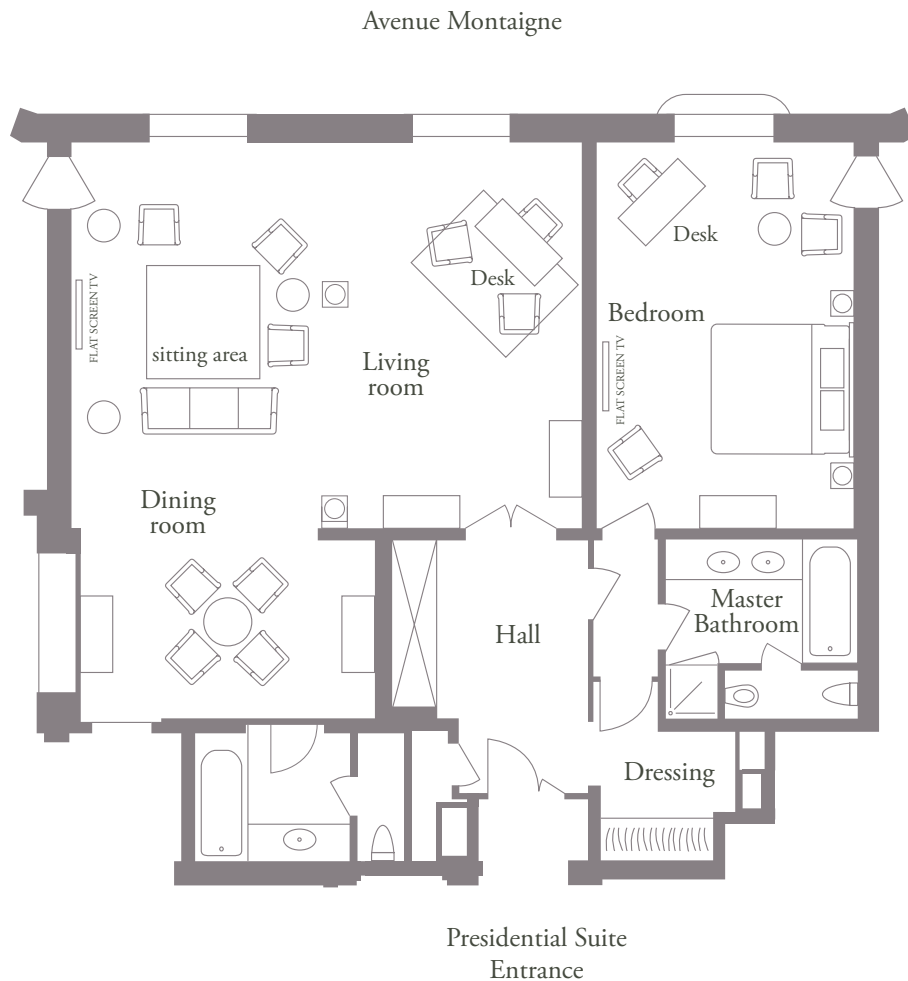
Next to the luxurious master bedroom is a large marble bathroom and a separate dressing room.

Eiffel Suite 361 is located on the third floor at the Hôtel Plaza Athénée and, as befits its title, enjoys a magnificent view of the Eiffel Tower and the fashionable Parisian surroundings.

This suite may be connected to a Superior Room, if additional accommodation is required.

Dimensions: 130 square metres / 1,400 square feet





## Presidential Suite

The Presidential Suites are at the pinnacle of Parisian opulence and luxury, with sumptuous fabrics and furnishings, yet they possess the warmth and intimacy of a private home.

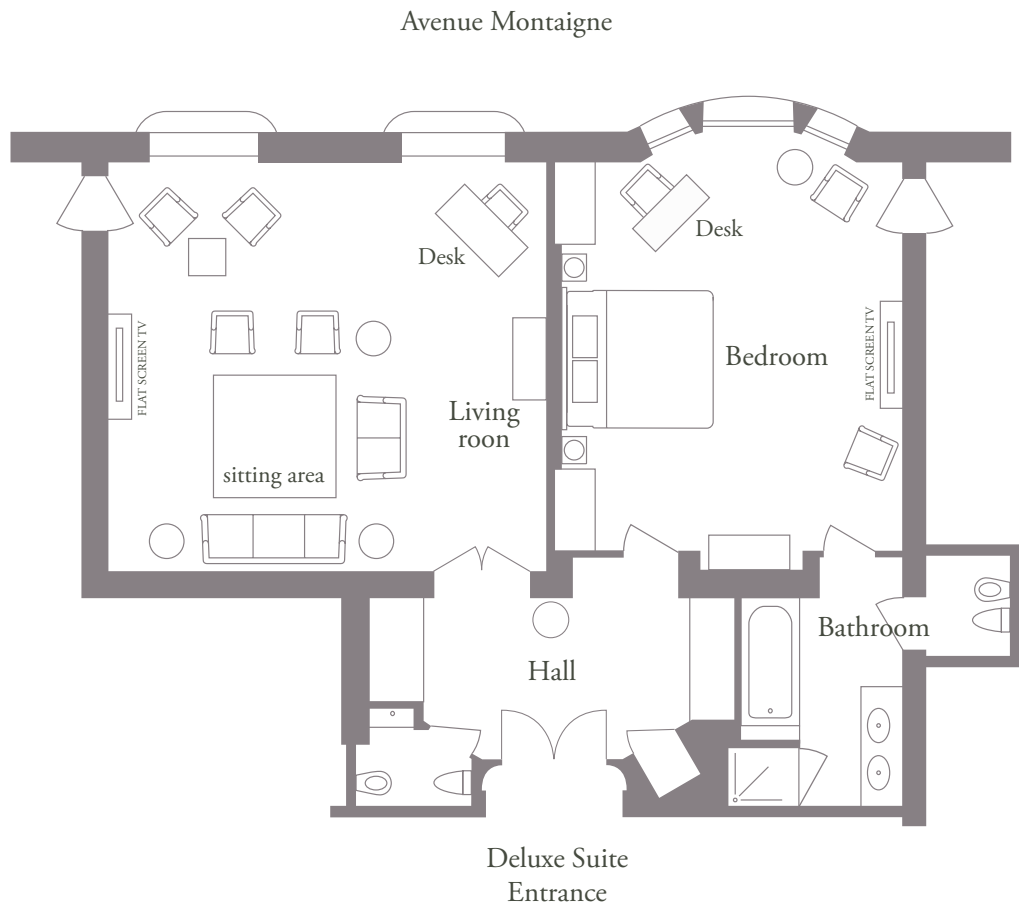
The sitting room offers remarkable space and comfort and, in some of the suites, there is a separate dining area. The luxurious sleeping quarters are furnished with a king size bed with a magnificent draped bed-head and there is also space for comfortable seating and a writing desk.

At the Hôtel Plaza Athénée there are no fewer than five Presidential Suites, which may be connected with a Deluxe Room or a Deluxe Suite and which overlook the prestigious Avenue Montaigne or the courtyard of the hotel.

Dimensions: 110 square metres / 1,180 square feet







## Prestige Suite

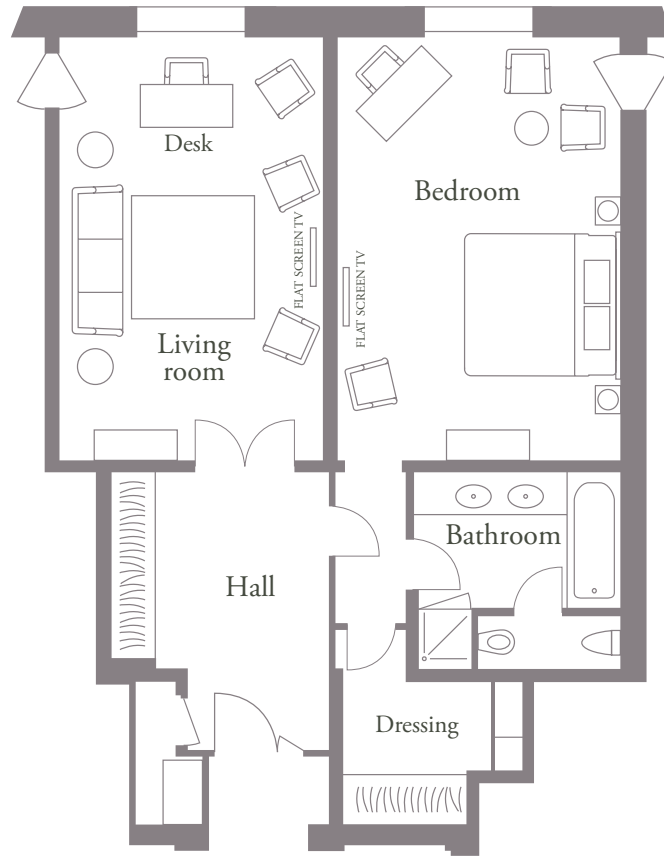
The Prestige Suites are superbly spacious and elegant, reminiscent of a private apartment in one of Paris's most chic arrondissements.

Décor is in the warm, flamboyant style of Louis XVI and there is a wide entrance hall with its own guest powder room. The hall opens on to the beautiful bedroom, with its ensuite marble bathroom. The separate sitting room provides a perfect environment for entertaining friends.

The Hôtel Plaza Athénée's Prestige Suites overlook the fashionable Avenue Montaigne and, for guests who require more extensive accommodation, they may be connected with a Deluxe Room.

Dimensions: 80 square metres / 860 square feet





Deluxe Suite  
Entrance

## Deluxe Suite

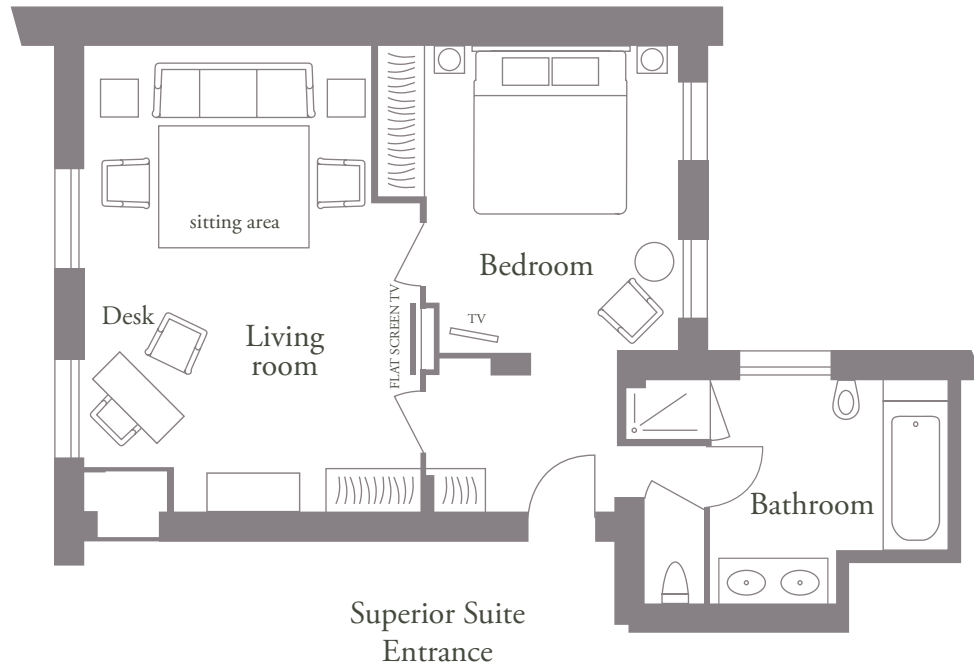
Deluxe Suites at the Hôtel Plaza Athénée are considerably larger than the Superior Suites and have a generously proportioned entrance hall, leading to a separate sitting room and bedroom. The suites are richly furnished in delightful Louis XVI style. The bathrooms are decorated in marble and there is a dressing room for the convenience of guests.

Views from the Deluxe Suites windows are of the Avenue Montaigne or the hotel's main garden.

The suites offer especially flexible accommodation and can be connected with a Deluxe Room or even another Deluxe Suite.

Dimensions: 70 square metres / 750 square feet





## Superior Suite

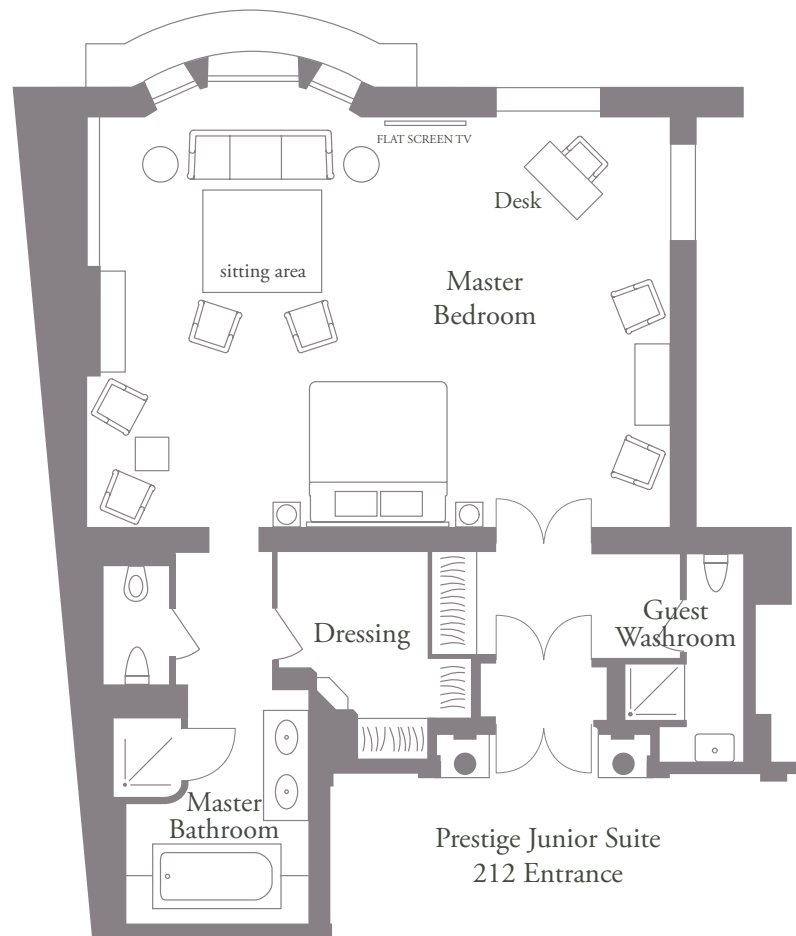
The Superior Suites provide the atmosphere of an elegant Parisian apartment, decorated in enchanting Louis XVI style.

The beautifully furnished suites are arranged with separate sitting room and bedroom, providing both space and privacy for entertaining. They come with king, queen or twin beds and have an exquisite marble bathroom.

The Superior Suites at the Hôtel Plaza Athénée may be connected with a Superior Room and they enjoy views over a quiet courtyard.

Dimensions: 60 square metres / 645 square feet





## Prestige Junior Suite

The Hôtel Plaza Athénée's Prestige Junior Suite provides notably spacious and richly furnished accommodation for the discerning guest.

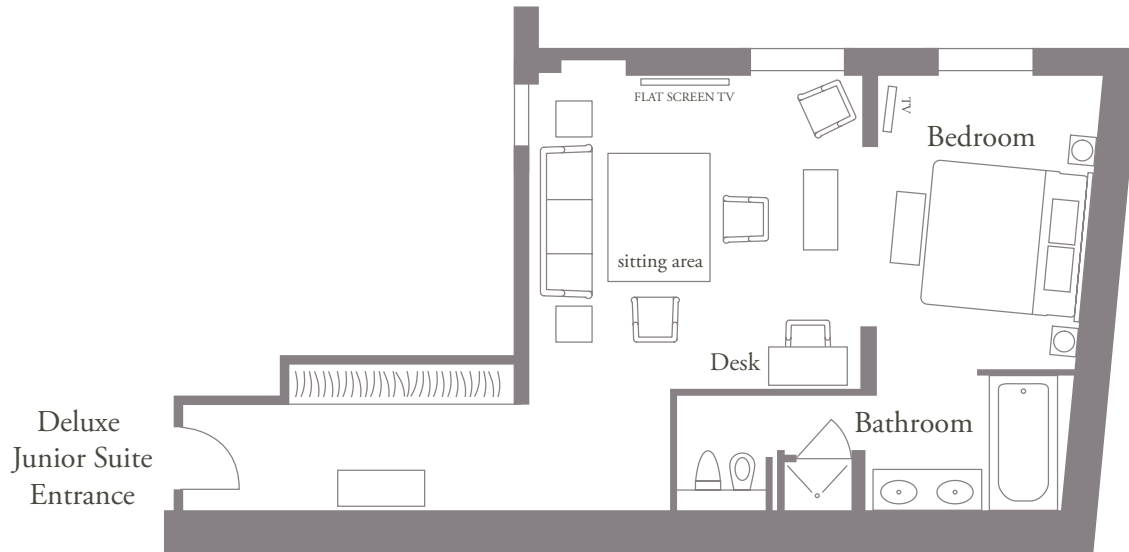
The light, airy suite, decorated in classic Louis XVI style, provides an extensive seating area with a writing design theme. The master bathroom has a bath and shower and a separate dressing room. As well as a private entrance hall, the Prestige Junior Suites also have a guest powder room.

These suites overlook the Avenue Montaigne and may be connected with a Prestige Suite, if additional accommodation is required.

Dimensions: 57 square metres / 615 square feet







## Deluxe Junior Suite

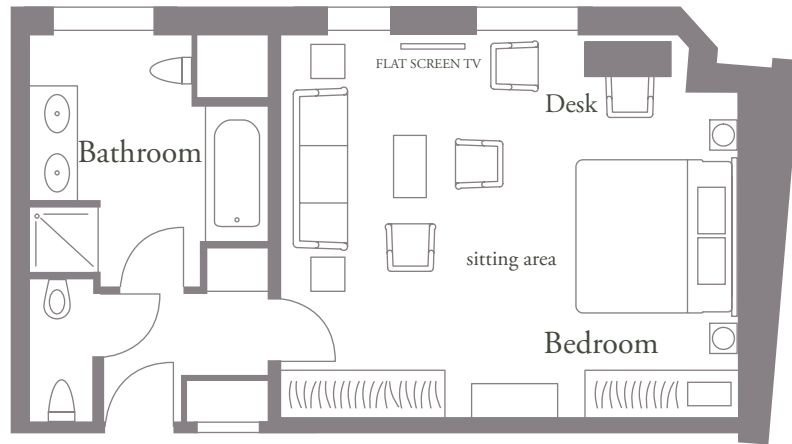
The Deluxe Junior Suites provide an opulent and elegant environment in which to enjoy the pleasure of the Hôtel Plaza Athénée, with delightful individual details adding a personal touch.

Decorated in Louis XVI or Art Deco style, the suites have a private entrance hall, leading to the spacious sitting room, which is slightly separated from the king-size or twin bedroom. The luxurious bathroom has both bath and shower.

The Deluxe Junior Suites at the Hôtel Plaza Athénée enjoy views over a quiet courtyard. If required, they may be connected with a Superior Room.

Dimensions: 55 square metres / 595 square feet





Junior Suite  
Entrance

## Junior Suite

The Junior Suites at the Hôtel Plaza Athénée are luxurious and sophisticated. Decorated either in Louis XVI or Art Déco style, the suites have their own private entrance, a king bed or twin beds and a distinct seating area with writing desk. As well as a spacious marble bathroom, there is an additional powder room. Some come with a separate dressing room.

The Junior Suites overlook either the Avenue Montaigne or the hotel's garden courtyard.

The Junior Suites may be connected with a Deluxe Room, if additional accommodation is required.

Dimensions: 45 square metres / 484 square feet





Home