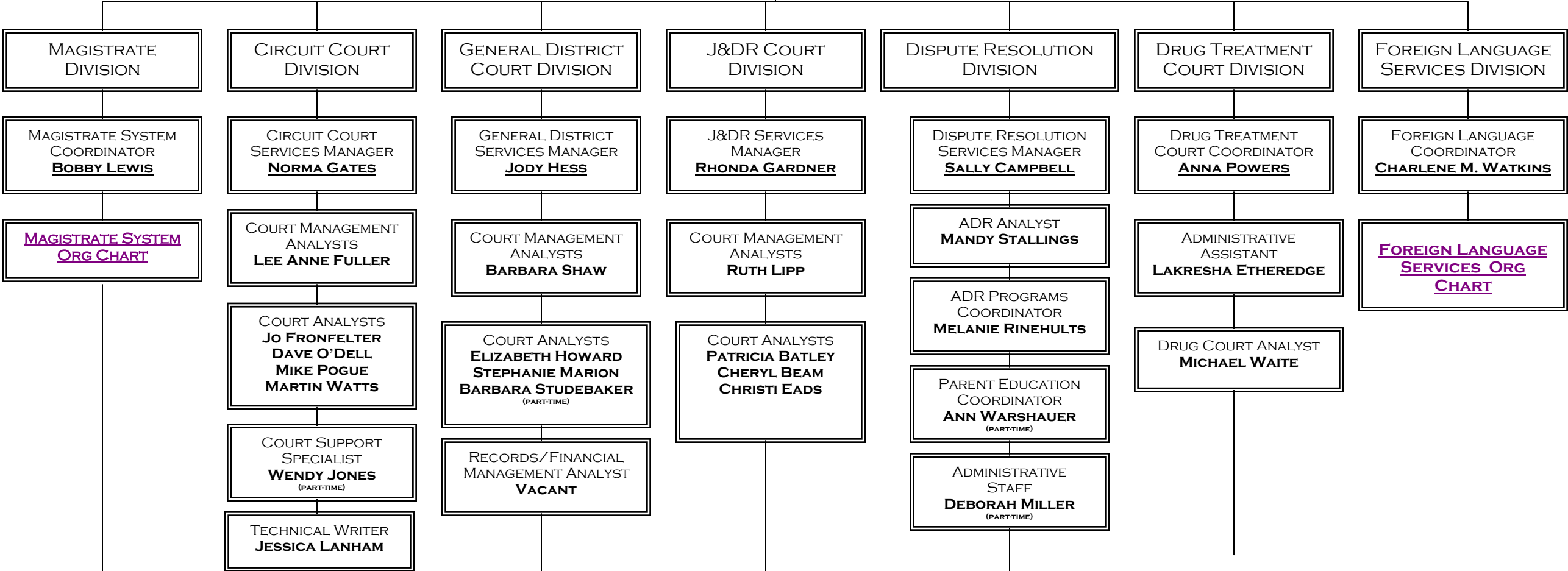


DEPARTMENT OF JUDICIAL SERVICES

DIRECTOR
PAUL F. DELOSH



ADMINISTRATIVE COORDINATOR
TAMMIE BARBEE

COURT SUPPORT SPECIALIST
CHRISTI LOVING BEVERLY ROACH
(PART-TIME)

ADMINISTRATIVE ASSISTANT
CAROLYN BROCKETT
(PART-TIME)

EDUCATION COORDINATOR
CAROL RESAVAGE