



**TRENTINO  
2013**  
WINTER  
UNIVERSIADE

**ITALY**



# SPORT MANUAL

## ALPINE SKIING



# A BIG THANK YOU



## PREMIUM PARTNER

---



## OFFICIAL PARTNER

---



## TECHNICAL SUPPLIER

---



## OFFICIAL BROADCASTER

---





## FORWARDS & INTRODUCTION

### **Welcome!**

Dear Athletes and Officials of the 26<sup>th</sup> Winter Universiade, The Winter Universiade Organising Committee Trentino 2013 is honoured and has great pride in welcoming elite University athletes to the Trentino 2013 Winter Universiade.

We are confident that the efforts made by the Organising Committee in all fields, although in a quite short preparation time frame, will provide you the best infrastructures, the most adequate competition venues and conditions to enhance your performances and enable you to enjoy the most comfortable and pleasant stay in our beautiful and historically, culturally rich region surrounded by the wonderful UNESCO heritage Dolomites mountains.

We are well aware that your performances will represent an important stage in your life and motivate you to consider any kind of result an important milestone also in consideration of your future professional activities.

We have prepared this summary booklet with the intention to provide you specifically with all necessary and more detailed and useful information, in order to facilitate the approach to the competition venue, to remind the most important dates and deadlines and to give you practical assistance on the field of play.

We look forward to your participation and hope you will find the our manual helpful.

Best wishes,



President  
*Sergio Anesi*



Secretary General  
*Filippo Bazzanella*



Sport & Venues Managing Director  
*Ubaldo Prucker*

## SPORT TECHNICAL MANUAL

# ALPINE SKIING

Passo San Pellegrino and Pozza di Fassa

**International University Sport Federation**



The FISU (International University Sport Federation) is responsible for the organisation and governance of worldwide competitions for student-athletes between the ages of 17 and 28. It was founded in 1949 as the world governing body of national university sports organisations and currently has 167 member associations from 5 continental regions.

The Winter Universiade is an international sporting and cultural festival which is staged every two years in a different city.

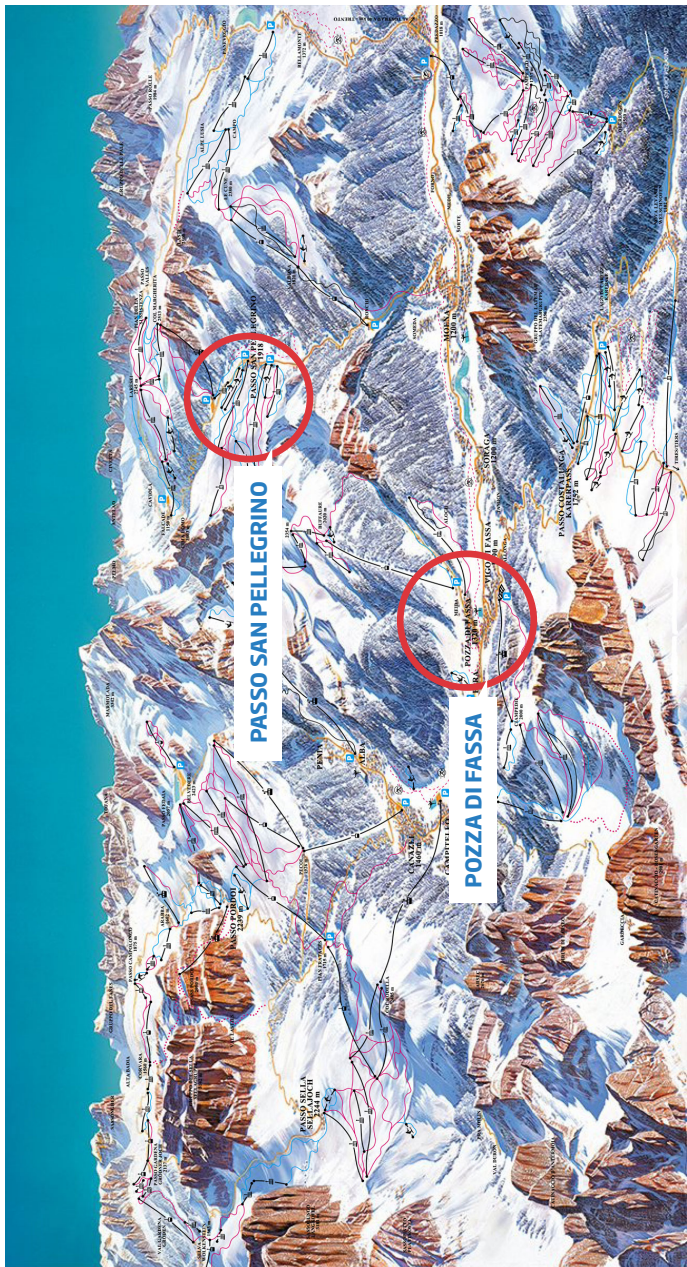
For the 2013 the FISU Executive Committee has appointed Trentino.

Each organising committee has to fulfill FISU regulations. Due to the particular situation of Trentino 2013 Winter Universiade, the Regulations differ from the ones of the previous editions.

The 26<sup>th</sup> Winter Universiade was attributed to Trentino in 2012 after the cancellation of the Winter Universiade in Maribor (Slovenia). For this reason, FISU and the Organising Committee have agreed on particular conditions.

Although it is organised under special circumstances, this exceptional Winter Universiade promised FISU and all university students to be held without any interruption in Trentino, an outstanding Alpine Region with a high standard of education, life, sport, culture and modern infrastructure.





# Table of contents

- 1. INTERNATIONAL AND NATIONAL SPORT FEDERATIONS**
- 2. FISU SPORT TECHNICAL COMMITTEE**
- 3. ALPINE SKIING VENUE**
  - 3.1** Introduction to the Venue
  - 3.2** Transport Service
  - 3.3** Distances from Venues
- 4. GENERAL RULES**
  - 4.1** Alpine Skiing - FISU Technical Regulations
  - 4.2** Insurance
  - 4.3** Protests
  - 4.4** Medical Care
- 5. COMPETITION MANAGEMENT**
  - 5.1** Alpine Skiing Structural Chart
  - 5.2** Competition Format
  - 5.3** Final Entries - Deadlines
  - 5.4** Clothing & Equipment
- 6. DRAWS AND TECHNICAL MEETINGS**
  - 6.1** TDs Info for Alpine Skiing Team Captains
  - 6.2** Training Equipment for Teams
- 7. COMPETITION SCHEDULE AND VENUES**
  - 7.1** Medals
  - 7.2** Training Dates
  - 7.3** Competition Dates
  - 7.4** Day by Day Program
- 8. CEREMONIES**
- 9. GENERAL INFORMATION**
  - 9.1** Skipass
  - 9.2** Results Distribution
  - 9.3** Opening & Closing Ceremony
- 10. DOPING CONTROL (RULES AND PROCEDURES)**
- 11. MAPS, VENUE PLANS AND TECHNICAL DATA**
- 12. CONTACTS**





# 1. International and National Sport Federations

## **International University Sports Federation (FISU)**

President

*Claude-Louis Gallien (FRA)*

Secretary General/CEO

*Eric Saintrond (BEL)*

### **Maison du Sport International**

Av. de Rhodanie 54

CH - 1007 Lausanne, Switzerland

Ph. +41 (0) 216130810

Fax +41 (0) 216015612

[fisufisu.net](mailto:fisufisu.net)

[www.fisu.net](http://www.fisu.net)

---

## **International Ski Federation (FIS)**

President

*Gian Franco Kasper (SUI)*

Secretary General

*Sarah Lewis (GBR)*

Marc Hodler House

Blochstrasse 2

CH-3653 Oberhofen / Thunersee - Switzerland

Ph. +41 (33) 244 6161

Fax +41 (33) 244 6171

[www.fis-ski.com](http://www.fis-ski.com)

[mail@fisski.ch](mailto:mail@fisski.ch)

## **Centro Universitario Sportivo Italiano (CUSI)**

President

*Leonardo Coiana (ITA)*

Secretary General/CEO

*Antonio Dima (ITA)*

### **Sede Nazionale**

Via Angelo Brofferio, 7

00195 Roma

Ph. 06 3722206

Fax 06 3724479

[cusi@cusi.it](mailto:cusi@cusi.it)

[www.cusi.it](http://www.cusi.it)

---

## **Federazione Italiana Sport Invernali (FISI)**

President

*Flavio Roda (ITA)*

Secretary General

*Enrico Negretti (ITA)*

Via G.B. Piranesi, 46 - 20137 Milano

[www.fisi.org](http://www.fisi.org)







## 2. FISU Sport Technical Committee

### **INTERNATIONAL TECHNICAL COMMITTEE FOR WINTER UNIVERSIADE (CTI-UH)**

Chair

*Roger Roth (SUI)*

Vice-Chair

*Robert Philip (CAN)*

#### **Members:**

- › Matjaz KRANJC (SLO) - Alpine Skiing
- › Ondrej RYBAR (CZE) - Biathlon
- › Zofia KIELPINSKA (POL) - Cross Country Skiing
- › Jeanette JOHNSTON (GBR) - Curling
- › Marie LUNDMARK (FIN) - Figure Skating
- › Luc KOHLY (FRA) - Freestyle Skiing
- › Lars G. KARLSSON (SWE) - Ice Hockey
- › Frederick MEREDITH (GBR) - Ice Hockey
- › Karl LUSTENBERGER (SUI) - Nordic Combined
- › Nam Hwan PARK (KOR) - Short Track Speed Skating
- › Ola SUNDEKVIST (SWE) - Snowboarding
- › Louw HEKKEMA (NED) - Speed Skating
- › Paul GANZENHUBER (AUT) - Ski Jumping

## **FISU SPORT TECHNICAL COMMITTEE**

### **Winter Universiade 2013**

The CTI (International Technical Committee) - UH (Winter Universiade) is responsible for:

1. cooperating with the CRS in drawing up the technical regulations of the Winter Universiade;
2. advising the EC concerning any general problem of technical matters;
3. controlling the technical conduct of the Winter Universiade.

CTI Chair Winter Universiade

*Roger Roth (SUI)*

Director Winter Universiade

*Milan Augustin (SVK)*

Executive Assistant Winter Universiade

*Jiho Kim (KOR)*

## **ORGANISING COMMITTEE STRUCTURAL CHART (OC)**

**Refer to documents published at the end, page A1 >**

## **SPORT & VENUES ORGANISATIONAL STRUCTURE**

**Refer to documents published at the end, page A2 >**





## 3. Alpine Skiing Venue

### 3.1 INTRODUCTION TO THE VENUE

#### **A) PASSO SAN PELLEGRINO FOR DH & SG**

- › Distance from Hotel Accommodation: in an area range from 15 to 19 km;
- › Distance from Trento: 97 km;

#### **Location**

Passo San Pellegrino offers more than 60 km of slopes of varying length and difficulty that spread out at altitudes between 1.918 and 2.513 metres, all equipped with cutting edge lift systems and state of the art, programmed artificial snow making systems.



#### **Description of the Courses: Cima Uomo**

On Cima Uomo slopes DH and SG races will be held.

The starting altitude is on 2.458 m s/l and the finish area is at 1.958 m s/l with a drop of 500 m.

The first part of the track is quite challenging with two jumps. The middle part is more movable, wide for great turns. The final part instead includes a nice jump with good visibility and not at all dangerous.

## Venue Technical Information

Competition	Start altitude	Finish altitude	Vertical drop	Course length
DH-M	2.458 m	1.958 m	500 m	2.450 m
DH-W	2.458 m	1.958 m	500 m	2.450 m
SG-M	2.458 m	1.958 m	500 m	2.450 m
SG-W	2.458 m	1.958 m	500 m	2.450 m

## Spectator Information

- › Facility capacity: no special stands will be organized

## Training Sites

Several slopes will be available in the proximity of the competition courses to give athletes similar characteristic and condition for training and equipment testing.

## B) POZZA DI FASSA FOR SL & GS

- › Distance from Hotel Accommodation: in an area range from 0 to 1 km;
- › Distance from Trento: 95 km;

## Location

In the shade of the Dolomites (Unesco World Natural Heritage), the Val di Fassa is the only valley in Trentino with a Ladin heart. The Ladins are an ethnic minority which continues to defend proudly its cultural, linguistic and gastronomic roots. Pozza is located in the heart of the Val di Fassa, surrounded by the Cima Undici and Cima Dodici and with a fantastic view on the Torri del Vajolet.

Interesting areas are the Val San Nicolò; the Buffaure ski area with its 25 km slopes and one of the longest slopes in the whole valley, starting from 2.050 m and leading back to village, the Ciampac ski area.

## Description of the Courses

The Ski Stadium Val di Fassa lighted at night, is open three





times a week for night skiing, and hosts important international events and is the official training centre of the Italian National Alpine Ski teams. It is in the middle of the village and offers perfect connections to the great Dolomiti Superski area.

### Venue Technical Information

Length:	1.128 m
Start:	1.631 m
Finish:	1.322 m
Vertical drop:	308 m
Average steepness:	27 %
Maximum steepness:	49 %
Width:	80 m

### Spectator Information

- › Facility capacity: 250

### Training Sites

Several slopes will be available in the proximity of the competition courses to give athletes similar characteristic and condition for training and equipment testing. In any case athletes will have a Dolomiti Superskipass that will allow them to ski on the whole courses around the Dolomiti skiing area.



## 3.2 TRANSPORT SERVICE

Trentino 2013 WUOC guarantees transportation service for all accredited persons of the 26<sup>th</sup> Winter Universiade.

The service can change day by day based on the competition schedule or force major. For information regarding the athletes and officials transportation services, schedules and timetables, please refer to the Transportation Manual.

The transport service is provided by Trentino Trasporti.

Distances between Trento centre and Cluster & Venues are shown in the following table.

### **DISTANCES - Km**

[Refer to documents published at the end, page A3 >](#)

### **TRANSPORT - Trento - Passo San Pellegrino**

[Refer to documents published at the end, page A4 >](#)

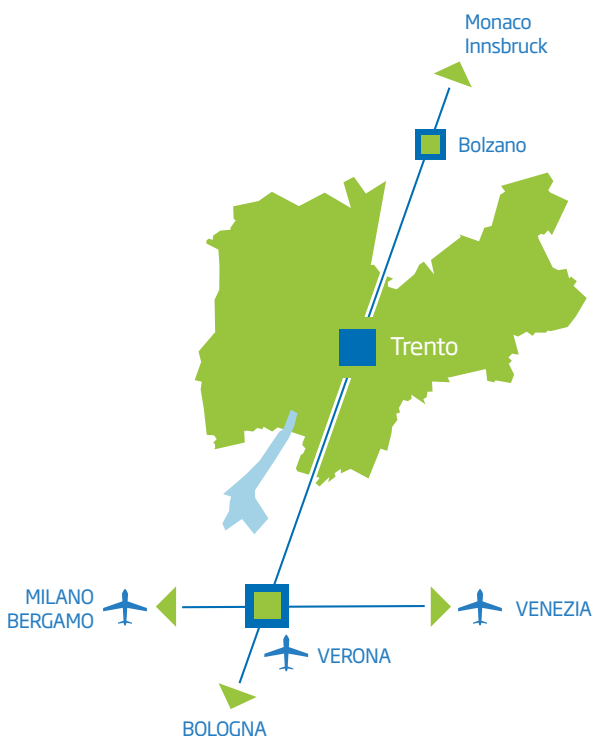
### **TRANSPORT - Trento - Pozza di Fassa**

[Refer to documents published at the end, page A5 >](#)





## DISTANCE FROM TRENTO TO MAIN AIRPORTS



DISTANCE FROM TRENTO	
Verona	76 km
Bergamo	138 km
Venezia	221 km
Milano	235 km

## **DISTANCE - Trento Train Station - San Bartolameo (MOC)**

[Refer to documents published at the end, page A6 >](#)

### **3.3 DISTANCES FROM VENUES**

#### **a) Passo San Pellegrino**

[Refer to documents published at the end, page A7 >](#)

#### **b) Pozza di Fassa**

[Refer to documents published at the end, page A8 >](#)

## **CLUSTER 5 MAP - Pozza di Fassa**

[Refer to documents published at the end, page A9 >](#)

## **TRANSPORT**

[Refer to documents published at the end, page A10 >](#)







## 4. General Rules

### 4.1 ALPINE SKIING - FISU TECHNICAL REGULATIONS

Referring to Regulations

for the 26<sup>th</sup> Winter Universiade 2013 Trentino

The events will be organised in accordance with the most recent technical regulations of the "Fédération Internationale de Ski" (FIS). In any dispute the English text will be regarded as authoritative.

#### **ALPINE SKIING**

##### **Men**

Downhill (DH)

Super G (SG)

Slalom (SL)

Giant Slalom (GS)

Combined \*

##### **Women**

Downhill (DH)

Super G (SG)

Slalom (SL)

Giant Slalom (GS)

Combined \*

*\*The combined classification will be established on four (4) events (Downhill, Super G, Slalom, and Giant Slalom). At least three (3) results must be achieved.*

Each country may enter:

A total of eighteen (18) competitors may enter for the Alpine Skiing events but not to exceed twelve (12) competitors of the same gender. Only six (6) men and six (6) women can take part in the same event.

At the first General Technical Meeting the Head of Delegation or his/her representative shall confirm and sign the official list of competitors accredited by CIC.

## **4.2 INSURANCE**

Referring to Regulations  
for the 26<sup>th</sup> Winter Universiade 2013 Trentino

Participating countries must have the appropriate insurance to cover travel and participation, as they are the responsibility neither of the Organising Committee nor of FISU.

Participating countries must therefore have insurance for the medical care of the whole delegation. Only first aid procedures related to the Games will be covered by the OC and only for accredited persons.

## **4.3 PROTESTS**

Referring to Regulations  
for the 26<sup>th</sup> Winter Universiade 2013 Trentino

All protests must be lodged with the Referee in writing. At the same time 50 Euro or other convertible currency to the same value must be deposited.

## **4.4 MEDICAL CARE**

Referring to Regulations  
for the 26<sup>th</sup> Winter Universiade 2013 Trentino

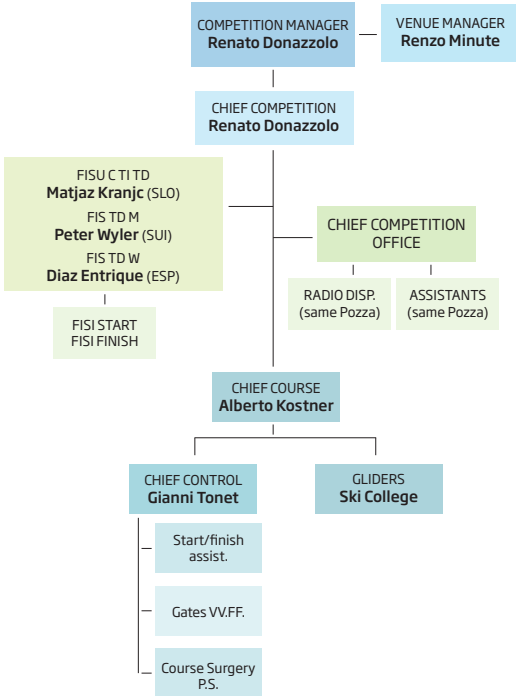
The Organising Committee will ensure free adequate medical assistance for the FISU Family, participants and all accredited persons during the Winter Universiade.



## 5. Competition Management

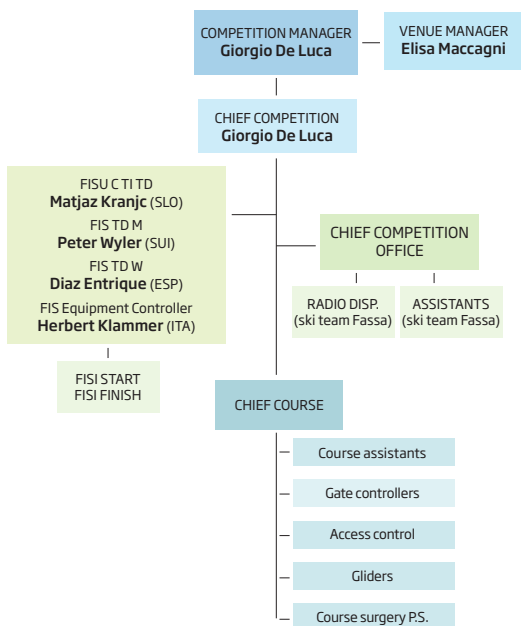
### 5.1 ALPINE SKIING STRUCTURAL CHART

#### a) Passo San Pellegrino



<b>Competition Manager</b>	Alpine Skiing	<b>Renzo Minella</b>	renzo.minella@universiadetrentino.org
		<b>Renato Donazzolo</b>	Ph. 0039 366 6055506 renato.donazzolo@universiadetrentino.org
<b>Venue Manager</b>	Passo San Pellegrino	<b>Renzo Minute</b>	renzo.minute@universiadetrentino.org

## b) Pozza di Fassa



<b>Competition Manager</b>	Alpine Skiing	<b>Renzo Minella</b> <b>Giorgio Deluca</b>	renzo.minella@universiadetrentino.org giorgio.deluca@universiadetrentino.org
<b>Venue Manager</b>	Pozza di Fassa	<b>Elisa Maccagni</b>	elisa.maccagni@universiadetrentino.org





## ITOs: International Technical Officials

FISU & FIS Technical Delegates		
Federation	Name	Country
FISU TD	<b>Matjaz Kranjc</b>	SLO
FIS TD Men	<b>Peter Wyler</b>	SUI
FIS TD Women	<b>Enrique Diaz</b>	ESP
FIS Equipment Controller	<b>Herbert Klammer</b>	ITA



## 5.2 COMPETITION FORMAT

Alpine skiing		Downhill M&W	Super G M&W	Giant Slalom M&W	Slalom M&W	Combined M&W
<b>Event</b>	<ul style="list-style-type: none"> <li>&gt; 1 round format</li> <li>&gt; A total of eighteen (18) competitors may enter for the alpine skiing events but not to exceed twelve (12) competitors of the same gender. Only six (6) men and six (6) women can take part in the same event</li> </ul>	<ul style="list-style-type: none"> <li>&gt; 1 round format</li> <li>&gt; A total of eighteen (18) competitors may enter for the alpine skiing events but not to exceed twelve (12) competitors of the same gender. Only six (6) men and six (6) women can take part in the same event</li> </ul>	<ul style="list-style-type: none"> <li>&gt; 2 rounds format (see comp. schedule timing)</li> <li>&gt; A total of eighteen (18) competitors may enter for the alpine skiing events but not to exceed twelve (12) competitors of the same gender. Only six (6) men and six (6) women can take part in the same event</li> </ul>	<ul style="list-style-type: none"> <li>&gt; 2 rounds format (see comp. schedule timing)</li> <li>&gt; A total of eighteen (18) competitors may enter for the alpine skiing events but not to exceed twelve (12) competitors of the same gender. Only six (6) men and six (6) women can take part in the same event</li> </ul>	<ul style="list-style-type: none"> <li>&gt; Will be established from 4 events (at least 3 must be achieved)</li> </ul>	
<b>Competition Format</b>						

### 5.3 FINAL ENTRIES - DEADLINES

Deadline	Form Type	Entry Form	Contents
11.11.2013	N-5 N-12 N-14 I-5 I-12	Nominative Entry Nominative Entry Nominative Entry Delegation Individual Entry Individual Entry	Confirm name of participants
	Official Letter	Payment of 50% of total cost of the stay per participant and nominated Judges of the Delegations	
	Athlete Biography	Competitors / Teams biography	Information for media
	PPC Form	Planned Program Content	
	N-16	Nominative Entry - Travel	Travel Information

### 5.4 CLOTHING AND EQUIPMENT

Closing and equipment control will in principle follow FIS rules. The equipment control will be carried out in respect of the recent technical FIS regulations if no additional FISU rule will be determined. Each competitor is responsible for the equipment that he/she uses (skis, bindings, ski boots, helmets, suit, etc).

The term competition equipment encompasses all items of equipment which the competitor uses in competition. This includes closing as well as apparatus with technical functions. The entire competition equipment forms a functional unit.

## 6. Draws and Technical Meetings

TECHNICAL MEETINGS			
Date	Time	Description	Location
Dec. 10	17.00	1 <sup>st</sup> Team Captains Meeting	Art School Val di Fassa
Dec. 12	16.00	Team Captains Meeting	Art School Val di Fassa
	17.00	Team Captains Meeting	Art School Val di Fassa
Dec. 13	17.00	Team Captains Meeting	Art School Val di Fassa
Dec. 14	17.00	Team Captains Meeting	Art School Val di Fassa
Dec. 16	17.00	Team Captains Meeting	Art School Val di Fassa
Dec. 17	17.00	Team Captains Meeting	Art School Val di Fassa
Dec. 18	17.00	Team Captains Meeting	Art School Val di Fassa
Dec. 20	10:00	Team Captains Meeting	Art School Val di Fassa

CTI - UH MEETINGS			
Date	Time	Description	Location
Dec. 8	14.00	First CTI-UH meeting	Hotel Lagorai
Dec. 18	20.00	Final CTI-UH Meeting (followed by CTI reception)	San Bartolameo

### 6.1 TDs INFO FOR ALPINE SKIING

#### 1. TEAM CAPTAINS

- › on December 10<sup>th</sup> at 09:00 before official free skiing on the DH slope with DH equipment.
- › free skiing on the DH slope is planned for December 10<sup>th</sup> from 10.00 to 12.00. Not from 09:00.
- › free skiing is organised under the control of the Jury, with start and finish referee.
- › for the free skiing on the racing slope athletes have to use DH equipment and helmets.
- › start referee will send racers on the slope each 15 second. Each racer will be able to make at least two test of the DH slope.







## 2. RECOMMENDATIONS

- › respect FIS equipment (Skis) according to the new rules valid for FIS races from this season on.

## 3. SAFETY REGULATIONS

- › only athletes with valid FIS code are admitted to the competition in DH and SG based on FIS rules point 2.1.2

### 6.2 TRAINING EQUIPMENT FOR TEAMS

In order to give equal and fair assistance to all teams requesting training equipment we are providing a company not far from Pozza and Passo San Pellegrino where each team can apply for equipment rental.

Enclosed you will find the contacts.

Office 0039 035 4826195

Fax 0039 035 4194192

Webpage: [www.liski.it](http://www.liski.it)

E-mail: [info@liski.it](mailto:info@liski.it)

## FIS SPECIFICATIONS FOR COMPETITION EQUIPMENT

**Refer to documents published at the end, page A11 >**

## 7. Competition Schedule & Venues

**Refer to documents published at the end, page A12 >**

### 7.1 MEDALS

TOTAL EVENTS - 10 MEDALS		
Men	Women	Location
Downhill	Downhill	Passo San Pellegrino
Super G	Super G	Passo San Pellegrino
Giant Slalom	Giant Slalom	Pozza di Fassa
Slalom	Slalom	Pozza di Fassa
Combined *	Combined *	Pozza di Fassa

*\* the combined classification will be established on four(4) events (DH, SG, GS and SL). At least three (3) results must be achieved. The ranking will be established by calculation according to FIS UNI regulation*



## 7.2 TRAINING DATES

UNOFFICIAL TRAININGS - DATES			
Date	Time	Description	Location
Dec. 10	10:00 - 12:00	DH W/M	P. San Pellegrino (Cima Uomo)
Dec. 16	09:30 - 12:00	GS W/M	Pozza di Fassa (Aloch)

OFFICIAL TRAININGS - DATES			
Date	Time	Description	Location
Dec. 11	08:00 - 08:45	W Inspection	P. San Pellegrino (Cima Uomo)
	08:50 - 09:30	M Inspection	P. San Pellegrino (Cima Uomo)
	10:30 - 11:30	DH W	P. San Pellegrino (Cima Uomo)
	11:30 - 12:30	DH M	P. San Pellegrino (Cima Uomo)
Dec. 12	08:00 - 08:30	W Inspection	P. San Pellegrino (Cima Uomo)
	08:50 - 09:45	M Inspection	P. San Pellegrino (Cima Uomo)
	10:00 - 12:00	DH W	P. San Pellegrino (Cima Uomo)
	12:00 - 14:00	DH M	P. San Pellegrino (Cima Uomo)
Dec. 14	08:00 - 09:00	M Inspection	P. San Pellegrino (Cima Uomo)
Dec. 15	08:00 - 09:00	W Inspection	P. San Pellegrino (Cima Uomo)

### **Passo San Pellegrino - Official Competition & Training Schedule**

**Refer to documents published at the end, page A13 >**

### **Pozza di Fassa - Official Competition & Training Schedule**

**Refer to documents published at the end, page A14 >**

## 7.3 COMPETITION DATES

COMPETITION DATES		
Date	Time	Description
Fri. 13 Dec.	10:00-12:00 12:00-14:00	DH-W - P. San Pellegrino (Cima Uomo) DH-M - Pellegrino (Cima Uomo)
Sat. 14 Dec.	10:00-12:00	SG-M - P. San Pellegrino (Cima Uomo)
Sun. 15 Dec.	10:00-12:00	SG-W - P. San Pellegrino (Cima Uomo)
Tue. 17 Dec.	10:00-12:00 13:00-15:00	GS-M - Pozza di Fassa GS-M - Pozza di Fassa
Wed. 18 Dec.	10:00-12:00 13:00-15:00	GS-W - Pozza di Fassa GS-W - Pozza di Fassa
Thu. 19 Dec.	17:00-19:00 20:00-22:00	SL-M - Pozza di Fassa SL-M - Pozza di Fassa
Fri. 20 Dec.	17:00-19:00 20:00-22:00	SL-W - Pozza di Fassa SL-W - Pozza di Fassa

## 7.4 DAY BY DAY PROGRAM

### **DAY BY DAY PROGRAM - Passo San Pellegrino**

**Refer to documents published at the end, page A15**

### **DAY BY DAY PROGRAM - Pozza di Fassa**

**Refer to documents published at the end, page A16**





## 8. Ceremonies

### **FLOWER & MEDAL CEREMONY**

#### Referring to Regulations for the 26<sup>th</sup> Winter Universiade 2013 Trentino

The Organising Committee is providing medals, with a design approved by FISU Executive Committee.

The medals will be awarded to the first three competitors as following:

- › Third: Bronze medal
- › Second: Silver/Silver gilt medal;
- › First: Gold/Gilt medal;

Any other interpretation of these rules will be the decision of the FISU Executive Committee.

The official languages for the awarding ceremonies in the stadium will be English and Italian.

During Medal Awarding Ceremony, the athletes are not allowed to bring on the podium national flags or any religious or cultural symbols and are expected to take caps off.

Athletes are required to remain at disposal of the press to take photos after the ceremony.



### Medal Ceremony Timetable

Date	Time	Location	Discipline
Fri. 13 Dec.	20:30	Predazzo, Piazza SS. Filippo e Giacomo	AS - DH W
Fri. 13 Dec.	20:30	Predazzo, Piazza SS. Filippo e Giacomo	AS - DH M
Sat. 14 Dec.	20:30	Moena, medal plaza	AS - SG M
Sun. 15 Dec.	20:30	Predazzo, Piazza SS. Filippo e Giacomo	AS - SG W
Tue. 17 Dec.	20:30	Predazzo, Piazza SS. Filippo e Giacomo	AS - GS M
Wed. 18 Dec.	20:30	Moena, medal plaza	AS - GS W
Thu. 19 Dec.	22:00	Pozza di Fassa, Ski stadium Aloch	AS - SL M
Thu. 19 Dec.	22:00	Pozza di Fassa, Ski stadium Aloch	AS - Combined M
Fri. 20 Dec.	22:00	Pozza di Fassa, Ski stadium Aloch	AS - SL W
Fri. 20 Dec.	22:00	Pozza di Fassa, Ski stadium Aloch	AS - Combined W



## 9. General Information

### 9.1 SKIPASS

For AS a nominative Dolomiti Superskipass will be handed over to each athlete and technical official for the whole period of the Winter Universiade.

### 9.2 RESULTS DISTRIBUTION

	Start List	Unofficial Results	Official Results	Weather Conditions	Daily Programme
Competition Office	X		X	X	X
Athletes Compound	X	X	X	X	X
Press Center	X		X	X	X
Accommodation Sites (notice board)	X		X	X	X
<a href="http://www.universitadel trentino.org">www.universitadel trentino.org</a>	X		X	X	X

### 9.3 OPENING & CLOSING CEREMONY

Opening Ceremony	
Date	11 December 2013
Time	18.00
Location	Trento Main Square

Closing Ceremony	
Date	21 December 2013
Time	18.00
Location	Alba di Canazei

## 10. Doping Control Rules & Procedures

Referring to Regulations  
for the 26<sup>th</sup> Winter Universiade 2013 Trentino

Doping control will be carried out for AS - DH & SG in Passo San Pellegrino at the Mountain Hut Cima Uomo.

For AS - GS & SL instead in Pozza di Fassa at Hotel Majaré.

Athletes to be tested will be accompanied by marshals.

At the first TCM medical responsible staff for doping control will give adequate information to all team officials.

## 11. Maps, Venue Plans and Technical Data

**Refer to documents published at the end, page A17 >**







## 12. Contacts

<b>Sport &amp; Venue Director</b>	<b>Ubaldo Prucker</b>	Office 0039 0461 499009 Ph. 0039 366 7888599 ubaldo.prucker@universiadetrentino.org
<b>Assistant</b>	<b>Michela Filippi</b>	Office 0039 0461 499297 Ph. 0039 334 6660598 michela.filippi@universiadetrentino.org

### Competition & Venue Management for Alpine Skiing

<b>Competition Manager</b>	<b>Alpine Skiing</b>	<b>Renzo Minella</b>	renzo.minella@universiadetrentino.org
		<b>Renato Donazzolo</b>	Ph. 0039 366 6055506 renato.donazzolo@universiadetrentino.org
<b>Venue Manager</b>	<b>Passo San Pellegrino</b>	<b>Renzo Minute</b>	renzo.minute@universiadetrentino.org

<b>Competition Manager</b>	<b>Alpine Skiing</b>	<b>Renzo Minella</b>	renzo.minella@universiadetrentino.org
		<b>Giorgio Deluca</b>	giorgio.deluca@universiadetrentino.org
<b>Venue Manager</b>	<b>Pozza di Fassa</b>	<b>Elisa Maccagni</b>	elisa.maccagni@universiadetrentino.org

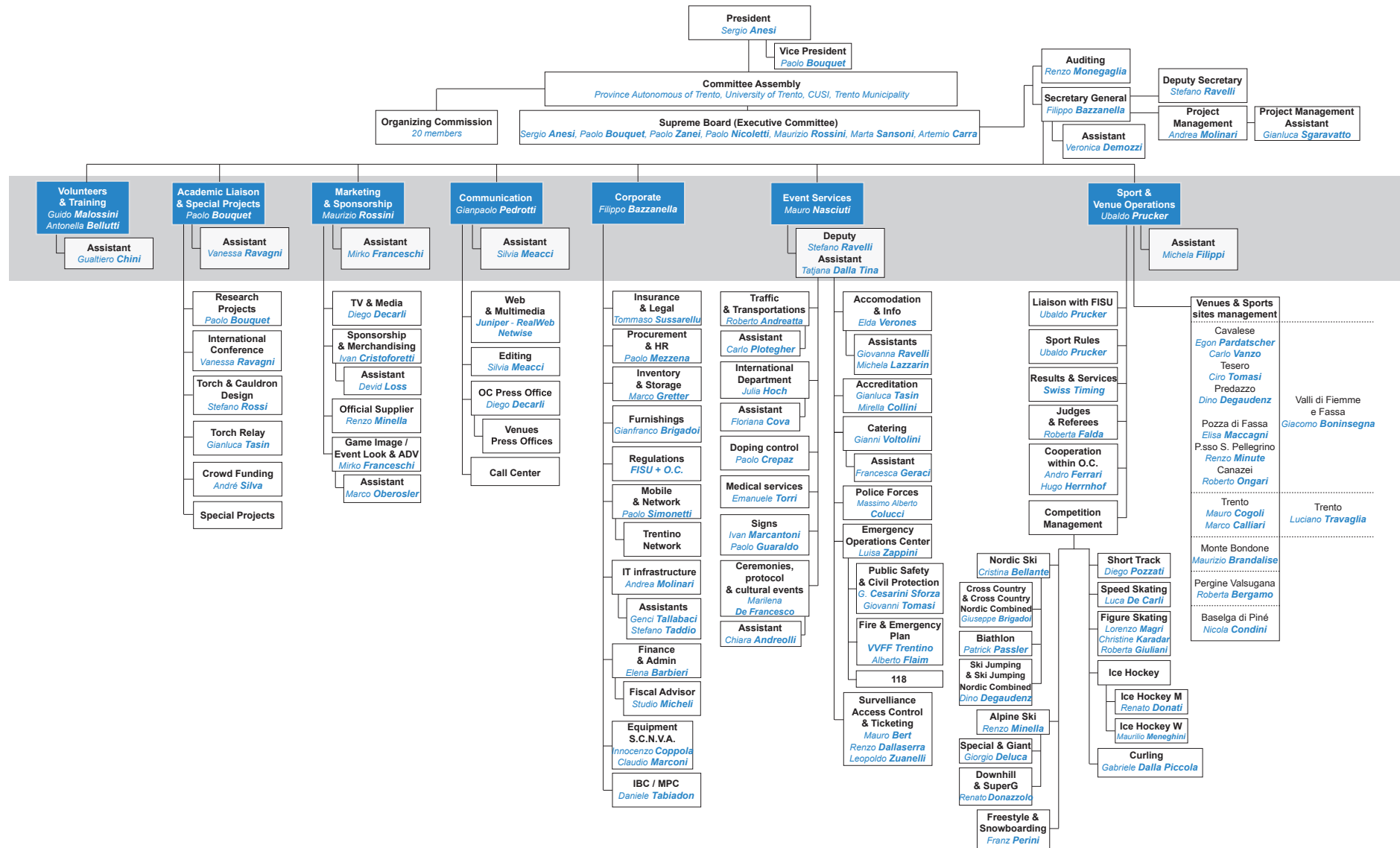
#### Links:

<http://www.universiadetrentino.org/>



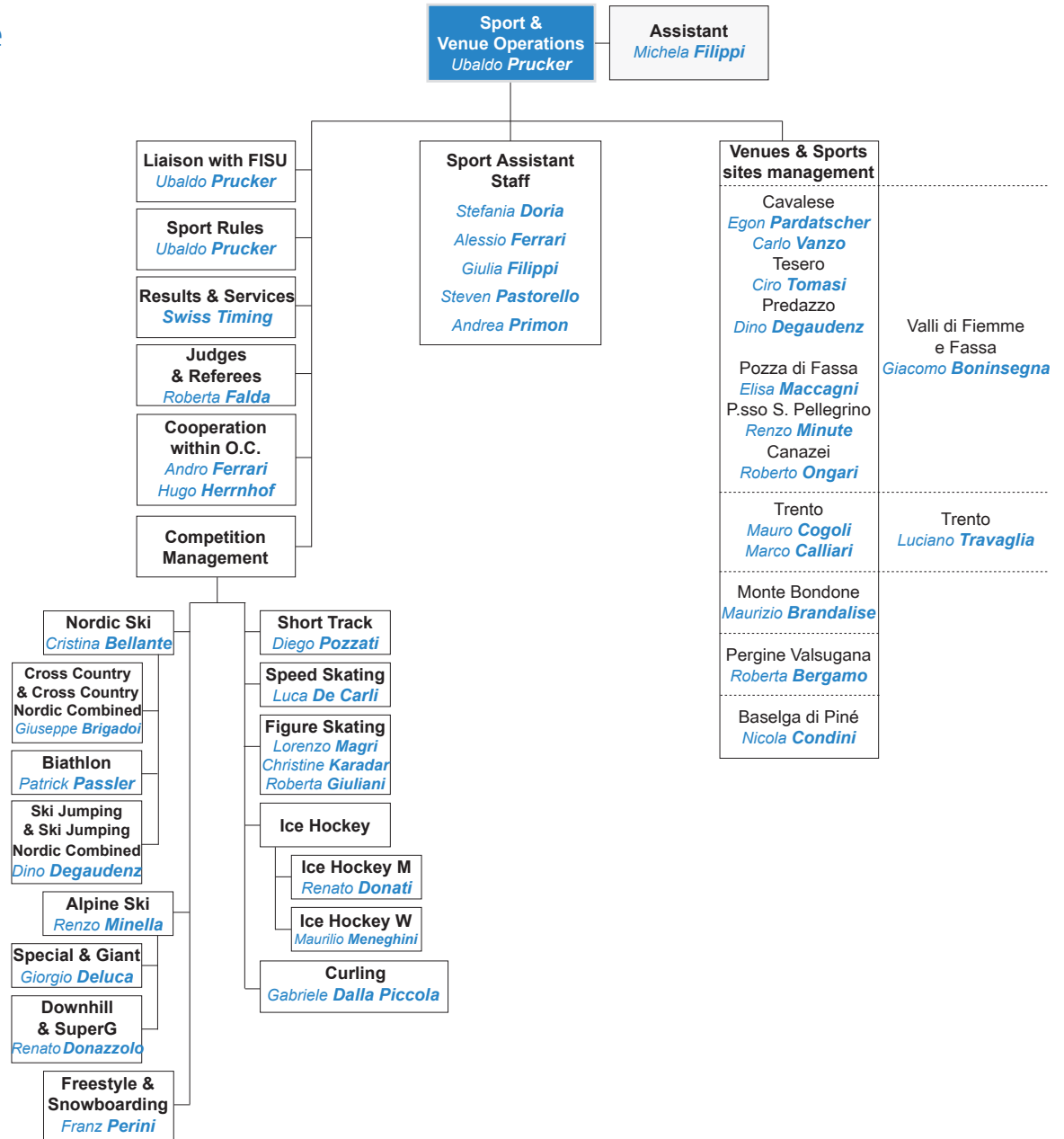


# Organising Committee Structural Chart (OC)





## Sports & Venues Organisational Structure



## DISTANCES - Km

	TRENTO - Railroad station	MONTE BONDONE - Montesel	PERGINE VALSUGANA - Ice Stadium	MIOLA DI PINÈ - Ice Rink Piné	CAVALESE - Ice Stadium	LAGO DI TESERO	PREDAZZO - Stalimen	PASSO SAN PELLEGRINO	POZZA DI FASSA - Aloch	ALBA DI CANAZEI - Ice Stadium "Scola"
TRENTO - Railroad station		20	12	20	64	69	79	97	95	105
MONTE BONDONE - Montesel	20		37	45	85	90	100	118	116	126
PERGINE VALSUGANA - Ice Stadium	12	37		10	48	49	58	76	74	84
MIOLA DI PINÈ - Ice Rink Piné	20	45	10		38	37	48	66	64	74
CAVALESE - Ice Stadium	64	85	48	38		5	14	32	30	40
LAGO DI TESERO	69	90	49	37	5		10	28	26	36
PREDAZZO - Stalimen	79	100	58	48	14	10		18	17	27
PASSO SAN PELLEGRINO	97	118	76	66	32	28	18		19	29
POZZA DI FASSA - Aloch	95	116	74	64	30	26	17	19		12
ALBA DI CANAZEI - Ice Stadium "Scola"	105	126	84	74	40	36	27	29	12	

	Trento
	Monte Bondone
	Pergine Valsugana
	Miola di Pinè
	Cavalese
	Lago di Tesero
	Predazzo
	Passo S. Pellegrino
	Pozza di Fassa
	Alba di Canazei

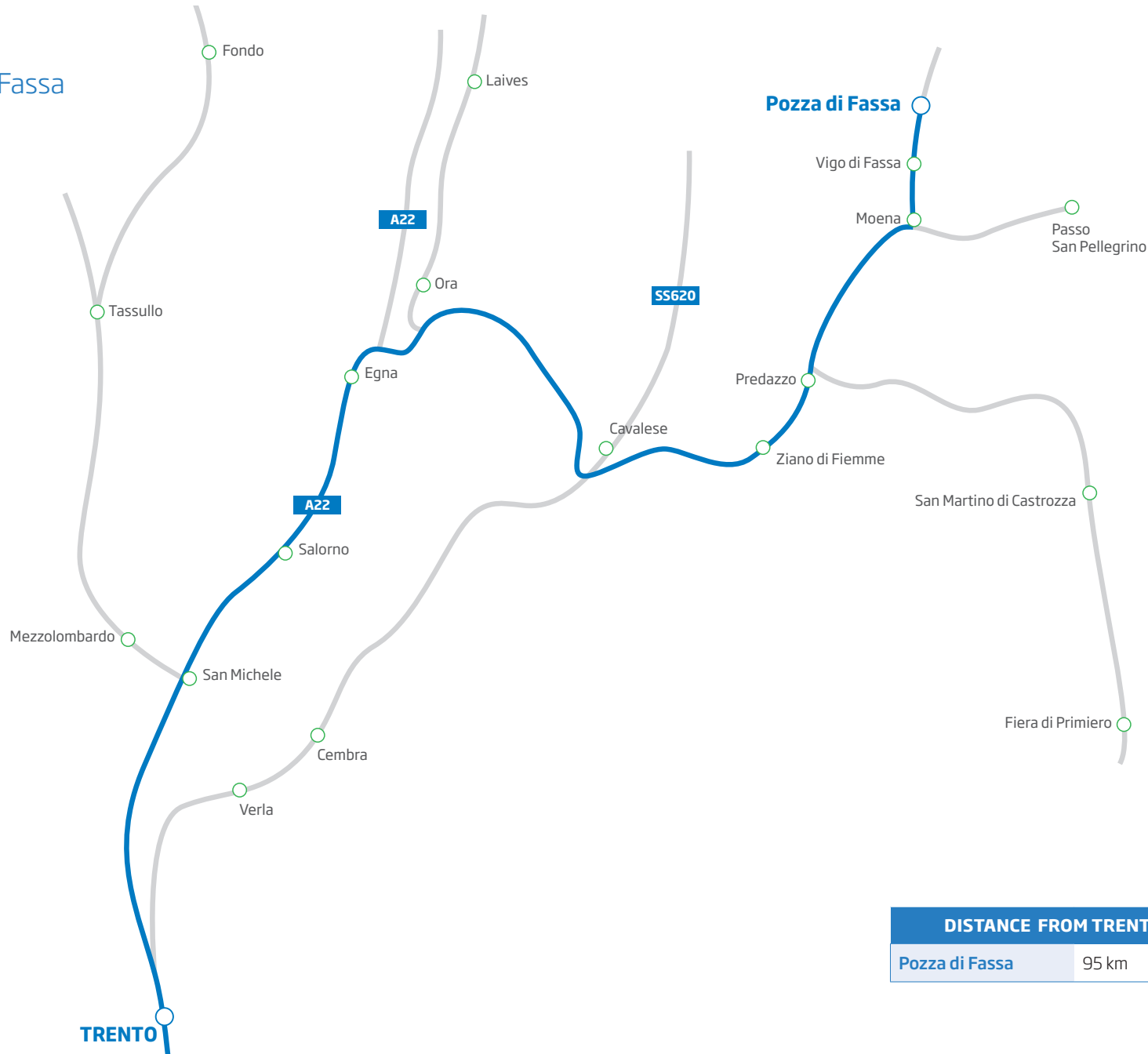


## TRANSPORT Trento - Passo San Pellegrino





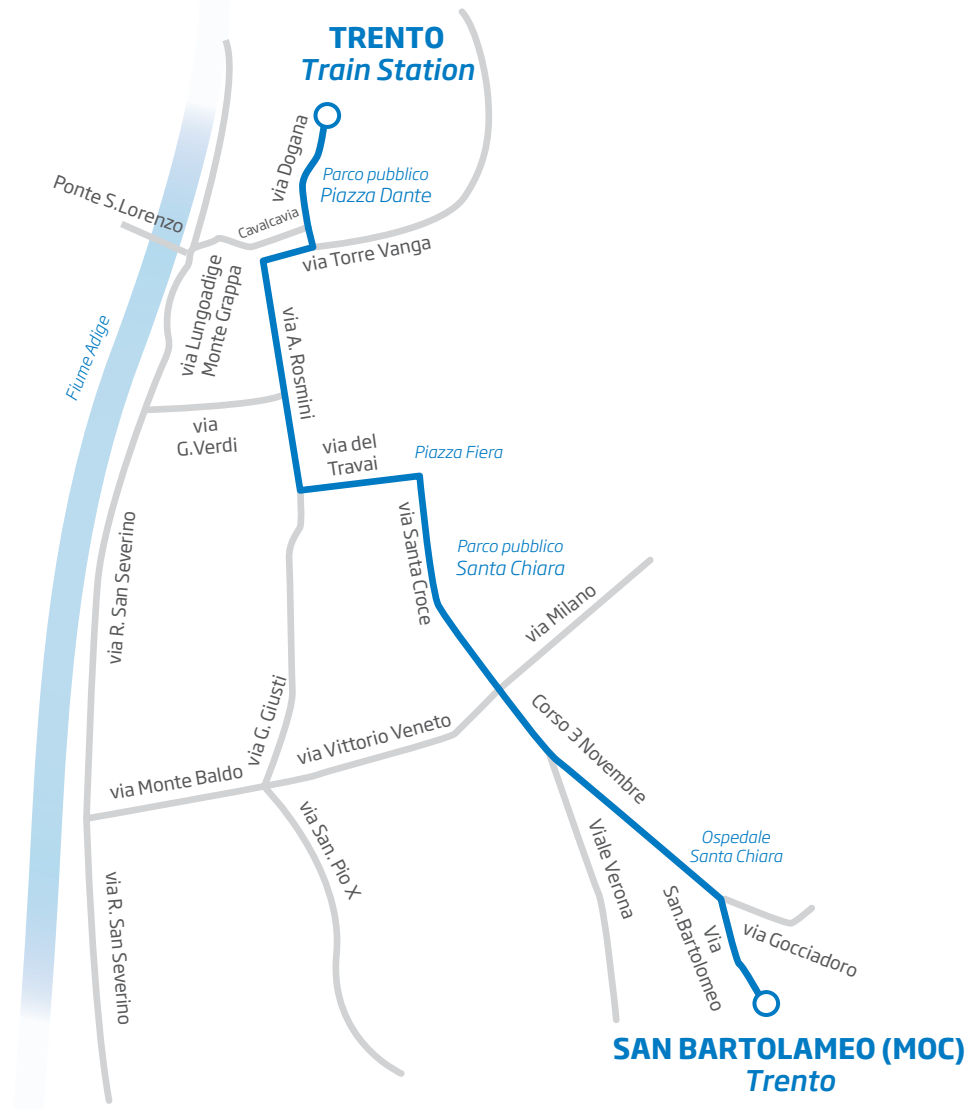
## TRANSPORT Trento - Pozza di Fassa





## DISTANCE

Trento Train Station - San Bartolameo (MOC)





## DISTANCES FROM VENUES

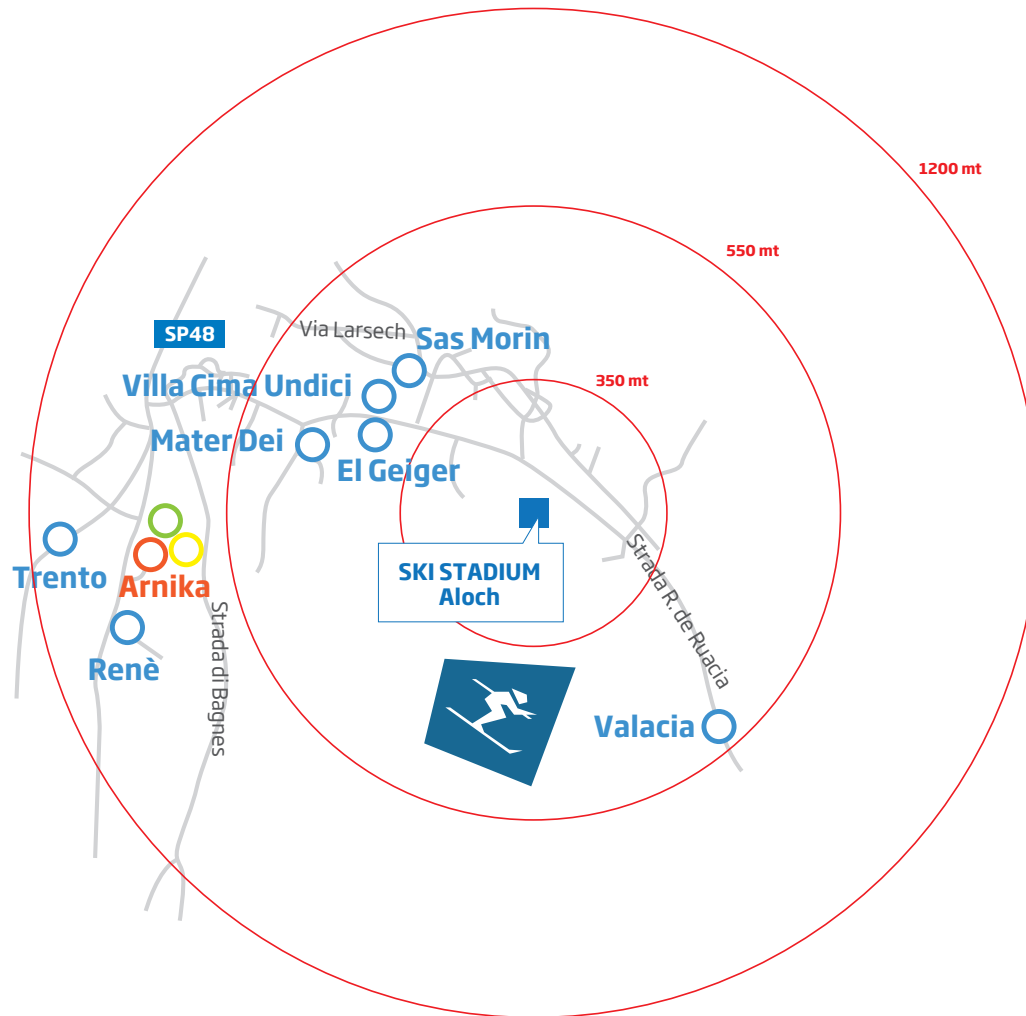
	TRENTO - Railroad station	MONTE BONDONE - Montesel	PERGINE VALSUGANA - Ice Stadium	MIOLA DI PINÈ - Ice Rink Piné	CAVALESE - Ice Stadium	LAGO DI TESERO	PREDAZZO - Stalimen	PASSO SAN PELLEGRINO	POZZA DI FASSA - Aloch	ALBA DI CANAZEI - Ice Stadium "Scola"
TRENTO - Railroad station		20	12	20	64	69	79	97	95	105
MONTE BONDONE - Montesel	20		37	45	85	90	100	118	116	126
PERGINE VALSUGANA - Ice Stadium	12	37		10	48	49	58	76	74	84
MIOLA DI PINÈ - Ice Rink Piné	20	45	10		38	37	48	66	64	74
CAVALESE - Ice Stadium	64	85	48	38		5	14	32	30	40
LAGO DI TESERO	69	90	49	37	5		10	28	26	36
PREDAZZO - Stalimen	79	100	58	48	14	10		18	17	27
PASSO SAN PELLEGRINO	97	118	76	66	32	28	18		19	29
POZZA DI FASSA - Aloch	95	116	74	64	30	26	17	19		12
ALBA DI CANAZEI - Ice Stadium "Scola"	105	126	84	74	40	36	27	29	12	

## DISTANCES FROM VENUES

	TRENTO - Railroad station	MONTE BONDONE - Montesel	PERGINE VALSUGANA - Ice Stadium	MIOLA DI PINÈ - Ice Rink Piné	CAVALESE - Ice Stadium	LAGO DI TESERO	PREDAZZO - Stalimen	PASSO SAN PELLEGRINO	POZZA DI FASSA - Aloch	ALBA DI CANAZEI - Ice Stadium "Scola"
TRENTO - Railroad station		20	12	20	64	69	79	97	95	105
MONTE BONDONE - Montesel	20		37	45	85	90	100	118	116	126
PERGINE VALSUGANA - Ice Stadium	12	37		10	48	49	58	76	74	84
MIOLA DI PINÈ - Ice Rink Piné	20	45	10		38	37	48	66	64	74
CAVALESE - Ice Stadium	64	85	48	38		5	14	32	30	40
LAGO DI TESERO	69	90	49	37	5		10	28	26	36
PREDAZZO - Stalimen	79	100	58	48	14	10		18	17	27
PASSO SAN PELLEGRINO	97	118	76	66	32	28	18		19	29
POZZA DI FASSA - Aloch	95	116	74	64	30	26	17	19		12
ALBA DI CANAZEI - Ice Stadium "Scola"	105	126	84	74	40	36	27	29	12	

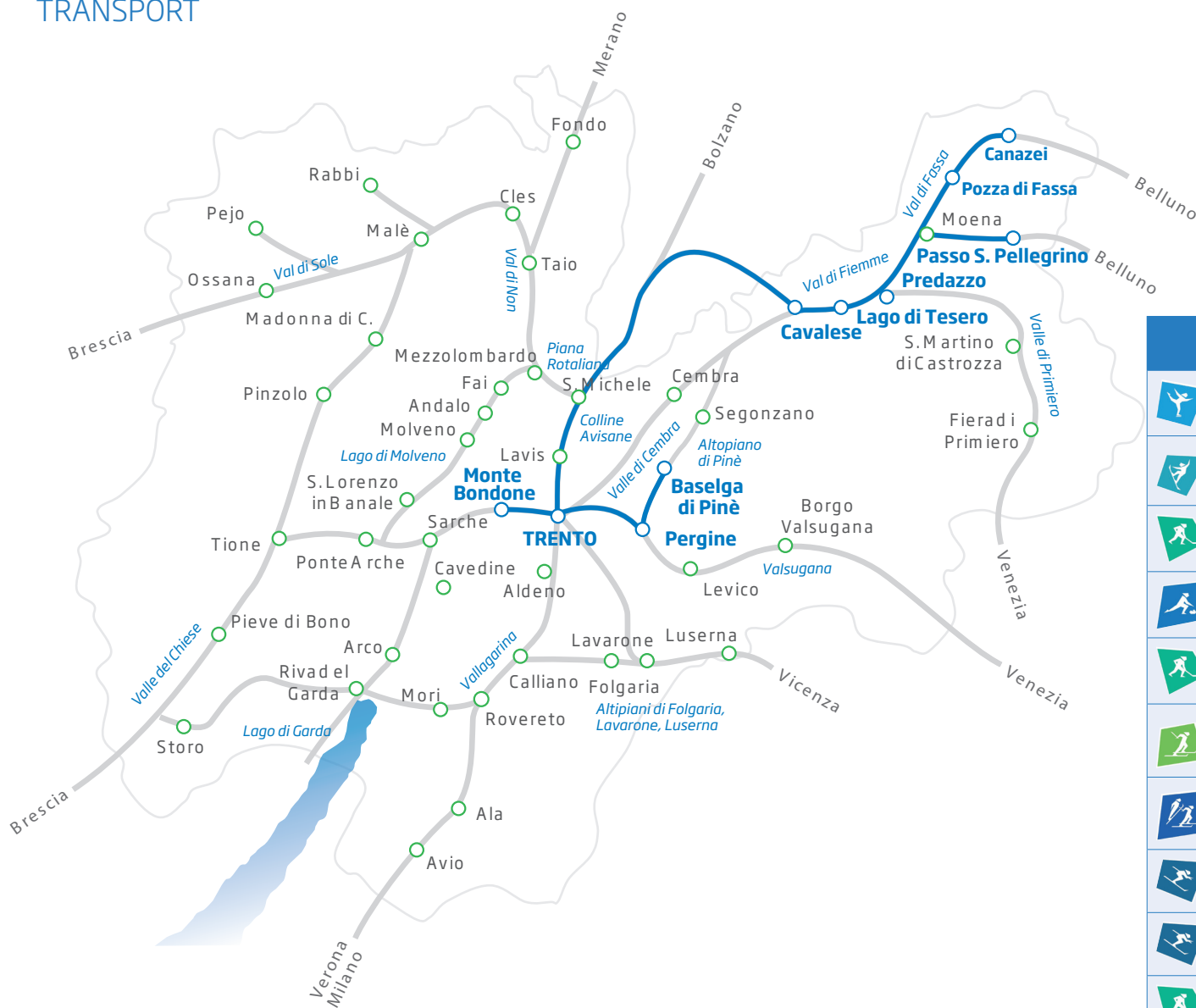


## CLUSTER 5 MAP - Pozza di Fassa



- DELEGATION
- JUDGES & REFEREES
- MEDIA & PRESS
- SWISS TIMING

# TRANSPORT



DISTANCE FROM TRENTO		
	Trento	
	Monte Bondone	20 km
	Pergine Valsugana	12 km
	Baselga di Pinè	20 km
	Cavalese	64 km
	Lago di Tesero	69 km
	Predazzo	79 km
	Passo S. Pellegrino	97 km
	Pozza di Fassa	95 km
	Alba di Canazei	105 km

Summary of the  
**SPECIFICATIONS FOR COMPETITION EQUIPMENT**  
 (Alpine racing skis)  
**Edition 2013/14 (valid as from the season 2013/14)**

All equipment used by Athlets is governed by the FIS Specifications for Competition Equipment.

[http://www.fis-ski.com/mm/Document/documentlibrary/Marketing/03/38/85/Competitionequipment\\_1314\\_30.09.2013\\_clean\\_English.pdf](http://www.fis-ski.com/mm/Document/documentlibrary/Marketing/03/38/85/Competitionequipment_1314_30.09.2013_clean_English.pdf)

**- Restrictions - WC/WSC/OWG/COC**

<b>Ski length: (Minimum)</b> 1.2.1.1	Ladies - Downhill	-	210 cm	Important! The ski length <u>must be marked</u> on the skii!
	Ladies - Super-G	-	205 cm	
<b>Profile width under Binding:</b> 1.2.1.2.1	Ladies - GS	-	188 cm	The ski length <u>must be marked</u> on the skii! measurement tolerance of +/- 1 cm
	Ladies - SL	-	155 cm	
	Men - Downhill	-	218 cm	
	Men - Super-G	-	210 cm	
	Men - GS	-	195 cm	
	Men - SL	-	165 cm	
<b>Profile width in front of Binding</b> 1.2.1.2.2	DH-SG-GS	Ladies & Men -	<=65 mm	Min. width of the running surface under the binding and in front of the binding <u>without any tolerance!</u>
	DH-SG -	Ladies & Men -	>=63mm	
<b>Radius (Minimum):</b> 1.2.1.3	GS -	Ladies & Men -	<=95 mm	The radius <u>must be marked</u> on the skii! Radius measurement for DH skis with a preparation tolerance of -1 m
	GS -	Men -	<=103 mm	
	SL -	Ladies & Men -	<=98 mm	
	DH -	Ladies & Men -	nl	
<b>Max. Standing height (ski/plates/binding)</b> 2.1.2	Super-G -	Ladies & Men -	Min. 50 m	Distance between the bottom of the running surface of the ski and the ski boot sole
	Super-G -	Ladies	Min. 40 m	
	GS -	Men -	Min. 45 m	
<b>Thickness of ski boot soles</b> Ski boots 3.2	GS -	Ladies	Min. 30 m	Distance between the ski boot sole and the base of the heel including all hard and soft parts
	SL -	Men -	Min. 35 m	
<b>Crash helmets 6- - 6.4</b>	Ladies & Men	-	Max 50 mm	The use of crash helmets is compulsory at all FIS alpine ski events and shall bear a CE mark and conform to recognized and appropriate standards such as EN 1077, ASTM 2040, SNELL 98 or RS 98, etc. For GS/SG/DH label of min. 1,5 sqcm, attesting conformity with FIS specifications, affixed in a visible location at back of the helmet is compulsory
	Ladies & Men	-	Max 43 mm	

**Very Important:**

The Ski length and the Radius must be marked on the ski

**COMPETITION EQUIPMENT TESTING (BOOTS & SKI) and SUITE PLOMBING**  
 is possible from TUE 10.12.2013 to SAT 14.10.2013

FIS SPECIFICATIONS FOR COMPETITION EQUIPMENT




# COMPETITION SCHEDULE & VENUES

XXVI Winter Universiade Trentino 2013 - Competition Schedule, December 11th-21st, 2013														
DECEMBER	TUE 10 DAY 0	WED 11 DAY 1	THU 12 DAY 2	FRI 13 DAY 3	SAT 14 DAY 4	SUN 15 DAY 5	MON 16 DAY 6	TUE 17 DAY 7	WED 18 DAY 8	THU 19 DAY 9	FRI 20 DAY 10	SAT 21 DAY 11		
Ceremonies		<b>Trento Opening Ceremony 18:00</b>										<b>Canazei Closing Ceremony 18:00</b>		
<b>Passo San Pellegrino</b> <b>Pozza di Fassa</b> DH, SG Alpine Skiing GS, SL	Alpine Skiing 9:00-12:00 Free Skiing W/M DH	Alpine Skiing 08:00-9:30 Insp. W 08:30-9:30 Insp. M 10:30 Training W DH 11:30 Training M DH	Alpine Skiing 08:00-9:30 Insp. W 08:50-9:45 Insp. M 10:00 Training W DH 12:00 Training M DH	Alpine Skiing 10:00 DH W 12:00 DH M	Alpine Skiing 08:00-09:00 Insp. M 10:00 SG M	Alpine Skiing 08:00-09:00 Insp. W 10:00 SG W	Alpine Skiing 09:30-12:00 Free Skiing GS Pozza	Alpine Skiing 10:00 GS M 1 <sup>st</sup> 13:00 GS W 2 <sup>nd</sup>	Alpine Skiing 10:00 GS W 1 <sup>st</sup> 13:00 GS W 2 <sup>nd</sup>	Alpine Skiing 17:00 SL W 1 <sup>st</sup> 20:00 SL W 2 <sup>nd</sup> AS Combined	Alpine Skiing 17:00 SL W 1 <sup>st</sup> 20:00 SL W 2 <sup>nd</sup> AS Combined	Alpine Skiing 17:00 SL W 1 <sup>st</sup> 20:00 SL W 2 <sup>nd</sup> AS Combined	Alpine Skiing 17:00 SL W 1 <sup>st</sup> 20:00 SL W 2 <sup>nd</sup> AS Combined	<b>10</b>
<b>Lago di Tesero</b> Cross-Country Skiing	Cross-Country Unoff. Training W/M Passo Lavazè	Cross-Country 12:30-14:30 Off. Train. Skiathlon W/M Unoff. Training W/M Passo Lavazè	Cross-Country 12:45 Skiathlon W 5km(C) + 5km(F) 15:15 Skiathlon M 7,5km(C) + 7,5km(F)	Cross-Country 18:00-19:30 Off. Train. Sprint Unoff. Training W/M Passo Lavazè	Cross-Country 12:30 Official Train. W/M 13:40 Sprint Q (C) W/M 16:00 Sprint F (C) W/M	Cross-Country 15:30 Mixed T. Sprint Q W/W 18:50 Mixed T. Sprint F W/W	Cross-Country 16:00-18:00 Off. Training Individual W/M	Cross-Country 13:30 Ind. 5km (F) W 15:15 Ind. 10km (F) M	Cross-Country 16:00-18:00 Off. Training Relay W/M Unoff. Training W/M Passo Lavazè During the day	Cross-Country 13:00 Relay 3x5km (C+FF) W 14:50 Relay 4x10km (C+FF) M	Cross-Country Official Training Mass Start 16:00 15km(C) W Mass Start	Cross-Country Official Training Mass Start 10:00 30km (C) M Mass Start	<b>11</b>	
<b>Predazzo</b> <b>Lago di Tesero</b> Nordic Combined			Nordic Combined 10:00-11:30 Off. Tr. Ind. Gundersen HS 106 17:00-18:00 Off. Train. 10 km CC	Nordic Combined 10:00 Individual HS 106 17:00 Ind. Gundersen 106m		Nordic Combined 13:30 Off. Train Mass Start HS 106 17:30 Off. Train Mass Start 10 km	Nordic Combined 14:15 Mass Start 10km 18:00 Mass Start HS 106	Nordic Combined 9:30 Off. Train. Team HS 106 17:00 Off. Train. 3x5km	Nordic Combined 10:00 Team HS 106 14:00 Team 3x5km				<b>3</b>	
<b>Predazzo</b> Ski Jumping			Ski Jumping 14:00-15:00 Off. Train W HS 106 15:00-16:00 Off. Train M HS 106	Ski Jumping 17:00 Trial M/W	Ski Jumping 17:00 Trial M/W 18:00 HS 106 M/W	Ski Jumping 11:00-13:00 Off. Train M/W Mixed Relay	Ski Jumping 11:00 Trial Mixed Relay 12:00 HS 106 Mixed Relay 17:00-19:30 Off. Train M Team HS106	Ski Jumping 17:00 Trial M Team 18:00 HS 106 M Team	Ski Jumping 18:00-19:30 Off. Train M HS134	Ski Jumping 17:00 Trial M 18:00 HS 134 M	Ski Jumping 17:00 Trial M 18:00 HS 134 M	Ski Jumping 17:00 Trial M 18:00 HS 134 M	<b>5</b>	
<b>Monte Bondone</b> Snowboarding	Snowboarding 10:00-10:20 SBX Insp. 10:30-12:30 Training W/M SBX	Snowboarding 09:00-09:15 SBX Insp. W/M 09:30-10:30 Training W/M 10:45-14:45 SBX Q W/M	Snowboarding 09:00-09:15 SBX Insp. W/M 09:30-10:30 Training W/M 10:30-12:00 SBX Finals W/M			Snowboarding 09:00-12:00 Training W/M HP	Snowboarding 08:30-09:20 HP Training 09:30-12:00 HP Q W/M	Snowboarding 08:30-09:50 HP T. SF W/M 09:00-10:00 HP SF W/M 09:00-12:00 Free riding on competition slope W/M PCS 14:30 - 15:30 Training W/M SBS 11:00-12:00 HP Finals W/M	Snowboarding 09:00-12:00 Free riding on competition slope W/M PCS 14:30 - 15:30 Training W/M SBS	Snowboarding 09:00-09:30 PGS Insp. W/M 09:45-12:15 PGS Q, W/M 13:00-13:20 PGS Insp. W/M 13:30-15:30 PGS Finals W/M 14:30-15:30 Training W/M SBS	Snowboarding 09:00-09:45 SBS Train W/M 10:00-12:00 SBS Q W/M	Snowboarding 08:30-09:15 SBS Tr. W/M 09:30-10:30 SBS SF W/M 10:45-11:15 SBS Tr F W/M 11:30-12:30 SBS Finals W/M	<b>8</b>	
<b>Lago di Tesero</b> Biathlon	Biathlon Unofficial Training	Biathlon 9:00-10:30 Unoff. Train. M 10:40-12:10 Unoff. Train. W	Biathlon 9:00-10:30 Off. Train. M 10:40-12:10 Off. Train. W	Biathlon 09:20-10:10 Zero M 10:15-12:10 20km M 12:20-13:10 Zero W 13:15-14:00 15km W	Biathlon 08:30-10:00 Off. Train. M 10:10-11:30 Off. Train. W	Biathlon 08:50-09:40 Zero M 10:45-11:30 10km M 11:40-12:30 Zero W 12:25-14:00 7,5km W	Biathlon 09:55-10:40 Zero M 10:45-11:30 Purs. W 11:35-12:20 Zero W 12:25-13:10 Purs. W	Biathlon 09:00-11:00 Off. Train. W/M	Biathlon 10:00-10:50 Zero W/M 11:00-12:40 Off. Train. W/M	Biathlon 09:00-10:30 Off. Train. W/M	Biathlon 10:10-10:50 Zero M 11:00-11:50 Mass S. M 11:55-12:25 Zero W 12:30-13:10 Mass S. W	Biathlon 10:10-10:50 Zero M 11:00-11:50 Bronze Medal (1) 14:30-17:00 Gold Medal (1)	<b>9</b>	
<b>Alba di Canazei (1)</b> <b>Cavalese (2)</b> Ice Hockey M	Ice Hockey 16:30-19:00 ITA-LAT (1) 20:30-23:00 USA-SWE (1) 20:00-22:30 CAN-JPN (2)	Ice Hockey Official Training	Ice Hockey 16:30-19:00 RUS-GBR (1) 20:30-23:00 SVK-CZE (1) 20:00-22:30 KAZ-UKR (2)	Ice Hockey 16:30-19:00 SWE-ITA (1) 20:30-23:00 LAT-USA (1) 20:00-22:30 CAN-UKR (2)	Ice Hockey 16:30-19:00 CZE-RUS (1) 20:30-23:00 GBR-SVK (1) 20:00-22:30 KAZ-JPN (2)	Ice Hockey 16:30-19:00 ITA-USA (1) 20:30-23:00 SWE-LAT (1) 20:00-22:30 CAN-KAZ (2)	Ice Hockey 16:30-19:00 RUS-SVK (1) 20:30-23:00 CZE-GBR (1) 20:00-22:30 UKR-JPN (2)	Ice Hockey 16:00-18:30 D9-D12 (2) 16:00-18:30 D10-D11 (2) 20:00-22:30 QF(2)	Ice Hockey 16:30-19:00 QF1(1) 20:30-23:00 QF2(1) 16:00-18:30 QF3(2) 20:00-22:30 QF4(2)	Ice Hockey 16:30-19:00 LQF1-LQF4 (1) 20:30-23:00 LQF2-LQF3 (1) 16:00-18:30 WQF1-4-LQF2(1) 20:00-22:30 LQF1-4-LQF2(1)	Ice Hockey 16:30-19:00 20:30-23:00 Semif1 16:00-18:30 WQF1-4-LQF2(1) 20:00-22:30 LQF1-4-LQF2(1)	Ice Hockey 16:30-19:00 20:30-23:00 Semif1 16:00-18:30 WQF1-4-LQF2(1) 20:00-22:30 LQF1-4-LQF2(1)	<b>1</b>	
<b>Pergine</b> Ice Hockey W	Ice Hockey 12:00-14:30 GBR-JPN 16:00-18:30 RUS-USA 20:00-22:30 ESP-CAN	Ice Hockey Official Training	Ice Hockey 12:00-14:30 GBR-USA 16:00-18:30 CAN-RUS 20:00-22:30 ESP-JPN	Ice Hockey 12:00-14:30 ESP-RUS 16:00-18:30 CAN-GBR 20:00-22:30 USA-JPN	Ice Hockey Official Training	Ice Hockey 12:00-14:30 RUS-GBR 16:00-18:30 JPN-CAN 20:00-22:30 USA-ESP	Ice Hockey 12:00-14:30 RUS-GBR 16:00-18:30 JPN-CAN 20:00-22:30 USA-ESP	Ice Hockey 16:00-18:30 W/S-F1 (R2-R3) 20:00-22:30 W/S-F2 (R1-R4)	Ice Hockey 16:00-18:30 W/S place (R5-R6)	Ice Hockey 16:00-18:30 W/S place (R5-R6)	Ice Hockey 16:00-18:30 Bronze Medal 20:00-22:30 Gold Medal	Ice Hockey 16:00-18:30 Bronze Medal 20:00-22:30 Gold Medal	<b>1</b>	
<b>Trento</b> Figure Skating	Figure Skating Official Training	Figure Skating 10:00 - 15:38 M S	Figure Skating 16:45 - 18:07 P S 18:15 - 22:16 M F	Figure Skating 16:45 - 20:19 P S 20:25 - 21:45 P F	Figure Skating 14:05 - 19:09 L S 19:15 - 22:29 D F	Figure Skating 14:05 - 17:49 L F 19:00 - 20:24 EXH		Short Track 15:00-19:00 Unofficial Training W/M	Short Track 09:00-12:00 Off. Train. W/M 15:00-19:00 Off. Train. W/M	Short Track 11:00-13:00 Training 14:00 900m W/M 18:30 3000m Rel. W heats 5000m Rel. M heats	Short Track 11:00-13:00 Training 14:00 900m W/M 18:30 3000m Rel. W SF 5000m Rel. M SF	Short Track 11:00-13:00 Training 14:00 1000m W/M 18:30 3000m Rel. W Final 5000m Rel. M Final	<b>4</b>	
<b>Trento</b> Short Track													<b>8</b>	
<b>Baselga di Pinè</b> Curling	Curling Official Training W/M 09:00-10:15 W 10:45-12:00 M 13:15-14:30 M 15:00-16:15 W	Curling Official Training W/M 08:30-9:45 W 10:15-11:30 W 12:30-13:45 M 14:15-15:30 W	Curling 09:00/19:00 draw 1-2 W 13:30 Curling Opening 14:00 draw 1 M	Curling 09:00/19:00 draw 2-3 M 14:00 draw 3 W	Curling 09:00/19:00 draw 4-5 W 14:00 draw 4 M	Curling 09:00/19:00 draw 5-6 M 14:00 draw 6 W	Curling 09:00/19:00 draw 7-8 W 14:00 draw 7 M	Curling 09:00/19:00 draw 8-9 M 14:00 draw 9 W	Curling 09:00/14:00/19:00 (if required)	Curling 09:00 Curling W/M 15:00 Bronze Medal W/M	Curling 09:00 Semifinals W/M 15:00 Bronze Medal W/M	Curling 09:00 Gold Medal W 14:00 Gold Medal M Closing Parade	Curling 09:00 Gold Medal W 14:00 Gold Medal M Closing Parade	<b>2</b>
<b>Monte Bondone</b> Freestyle Skiing			Freestyle Skiing 10:00-11:00 Ina. + Train SX W/M 13:30-15:30 Train SX W/M	Freestyle Skiing 10:00-14:00 Off. Training W/M SX	Freestyle Skiing 10:00-14:00 Off. Training W/M SX	Freestyle Skiing 09:00-10:30 Train SX W/M 13:30 M 1500m 13:00-14:30 SX Finals W/M	Freestyle Skiing 09:00-10:30 Train SX W/M 13:30 M 1500m 13:00-14:30 SX Finals W/M	Freestyle Skiing 13:00-15:00 Off. Training W/M SS	Freestyle Skiing 13:00-15:00 Off. Training W/M SS	Freestyle Skiing 09:30-11:30 SS Q W/M 12:00-14:00 SS Finals W/M	Freestyle Skiing 13:00-15:00 Off. Training W/M SS	Freestyle Skiing 13:00-15:00 Off. Training W/M SS	<b>4</b>	
<b>Baselga di Pinè</b> Speed Skating	Speed Skating 10:00-12:00 Off. Tr. W/M 11:00-12:00 T & Trial Starts W/M	Speed Skating 10:00-11:00 Off. Tr. W/M 11:00-12:00 T & Trial Starts W/M	Speed Skating 10:00-12:00 Off. Train. W/M 17:00-18:00 Trial Starts W/M	Speed Skating 09:00-11:00 Off. Train. 12:00 W 500m 14:30 W 5000m 16:30-18:00 Off. Train.	Speed Skating 09:00-11:00 Off. Train. 12:00 W 500m 14:30 W 5000m 16:30-18:00 Off. Train.	Speed Skating 09:00-11:00 Off. Train. 12:00 W 500m 14:30 W 5000m 16:30-18:00 Off. Train.	Speed Skating 09:00-11:00 Off. Train. 12:00 W 500m 14:30 W 5000m 16:30-18:00 Off. Train.	Speed Skating 10:00-12:00 Off. Tr. W/M 16:00-18:00 Off. Tr. W/M	Speed Skating 10:00-12:00 Off. Tr. W/M 16:00-18:00 Off. Tr. W/M	Speed Skating 09:00-11:00 Off. Train. 12:00 W 1000m 14:30 W 1000m 16:30-18:00 Off. Train.	Speed Skating 09:00-11:00 Off. Train. 12:00 W 1000m 14:30 W 1000m 16:30-18:00 Off. Train.	Speed Skating 10:00-12:00 Off. Train. (T.Purs) 13:00 W Team Pur. T. Trial 14:00 M Team Pur. T. Trial 16:00 Team Pur. Final W 16:30 Team Pur. Final M	Speed Skating 10:00-12:00 Off. Train. (T.Purs) 13:00 W Team Pur. T. Trial 14:00 M Team Pur. T. Trial 16:00 Team Pur. Final W 16:30 Team Pur. Final M	<b>12</b>
<b>DAILY MEDALS AWARD</b>	<b>0</b>	<b>0</b>	<b>5</b>	<b>8</b>	<b>8</b>	<b>9</b>	<b>3</b>	<b>8</b>	<b>10</b>	<b>10</b>	<b>13</b>	<b>4</b>	<b>78</b>	



## Passo San Pellegrino - OFFICIAL COMPETITION & TRAINING SCHEDULE


	7:00	7:30	8:00	8:30	9:00	9:30	10:00	10:30	11:00	11:30	12:00	12:30	13:00	13:30	14:00	14:30	15:00	15:30	16:00	16:30	17:00	17:30	18:00	18:30	19:00	19:30	20:00	20:30	21:00	21:30			
 <b>ALPINE SKIING (DOWNHILL, SUPERG)</b>																																	
TUESDAY 10					Unofficial W/M 09:00 - 12:00																												
WEDNESDAY 11			Inspection W/M 08:00 - 09:30					T. W. DH 10:30 - 11:30		T. M. DH 11:30 - 12:30																							
THURSDAY 12			Insp. W	Inspection M 08:50 - 09:45			DH Training W 10:00 - 12:00			DH Training M 12:00 - 14:00																							
FRIDAY 13							Downhill Women 10:00 - 12:00			Downhill Men 12:00 - 14:00																							
SATURDAY 14			Insp. M 08:00 - 09:00				SuperG Men 10:00 - 12:00																										
SUNDAY 15			Insp. W 08:00 - 09:00				SuperG Women 10:00 - 12:00																										
MONDAY 16																																	
TUESDAY 17																																	
WEDNESDAY 18																																	
THURSDAY 19																																	
FRIDAY 20																																	
SATURDAY 21																																	

Schedule and timetable could eventually be subject to changes

Unofficial Training
  Official Training
  Competition



## Pozza di Fassa - OFFICIAL COMPETITION & TRAINING SCHEDULE

 <b>ALPINE SKIING (GIANT SLALOM, SLALOM)</b>	7:00	7:30	8:00	8:30	9:00	9:30	10:00	10:30	11:00	11:30	12:00	12:30	13:00	13:30	14:00	14:30	15:00	15:30	16:00	16:30	17:00	17:30	18:00	18:30	19:00	19:30	20:00	20:30	21:00	21:30					
	TUESDAY 10																																		
WEDNESDAY 11																																			
THURSDAY 12																																			
FRIDAY 13																																			
SATURDAY 14																																			
SUNDAY 15																																			
MONDAY 16							Unofficial Tr. GS W/M 09:30 - 12:00																												
TUESDAY 17							Giant Slalom M1^M 10:00 - 12:00							Giant Slalom M 2^M 13:00 - 15:00																					
WEDNESDAY 18							Giant Slalom W1^M 10:00 - 12:00							Giant Slalom W 2^M 13:00 - 15:00																					
THURSDAY 19																							Slalom M/AS Comb. 1^M 17:00 - 19:00							Slalom M/AS Comb. 2^M 20:00 - 22:00					
FRIDAY 20																							Slalom W/AS Comb. 1^M 17:00 - 19:00							Slalom W/AS Comb. 2^M 20:00 - 22:00					
SATURDAY 21																																			

Schedule and timetable could eventually be subject to changes

Unofficial Training
  Official Training
  Competition



## DAY BY DAY PROGRAM - Passo San Pellegrino

Legend
Technical or CTI meetings & TCM
Unofficial Training
Official Training
Competition
Medal & Flower Ceremony

Day by Day - Alpine Skiing - PASSO SAN PELLEGRINO			
Date	Time	Activity	Location
08.12.2013	14:00	First CTI-UH meeting	Hotel Lagorai
10.12.2013	09:00 - 12:00	Unoff. Tr. DH W/M	Cima Uomo
	17:00	1st Captains Meeting	Art School Val di Fassa
11.12.2013	08:00 - 08:45	Insp. W	Cima Uomo
	08:50 - 09:30	Insp. M	Cima Uomo
	10:30 - 11:30	Off. Tr. DH W	Cima Uomo
	11:30 - 12:30	Off. Tr. DH M	Cima Uomo
12.12.2013	08:00 - 08:30	Insp. W	Cima Uomo
	08:50 - 09:45	Insp. M	Cima Uomo
	10:00 - 12:00	Off. Tr. DH W	Cima Uomo
	12:00 - 14:00	Off. Tr. DH M	Cima Uomo
	16:00	1st Technical Committee Meeting	Art School Val di Fassa
	17:00	Team Captains Meeting	Art School Val di Fassa
13.12.2013	10:00 - 12:00	Competition: DH W	Cima Uomo
	11:50	Flower Ceremony DH W	Cima Uomo
	12:00 - 14:00	Competition: DH M	Cima Uomo
	14:00	Flower Ceremony DH M	Cima Uomo
	17:00	Team Captains Meeting	Art School Val di Fassa
	20:30	Medal Ceremony	Predazzo
14.12.2013	08:00 - 09:00	Insp. M	Cima Uomo
	10:00 - 12:00	Competition: SG M	Cima Uomo
	12:00	Flower Ceremony SG M	Cima Uomo
	17:00	Team Captains Meeting	Art School Val di Fassa
	20:30	Medal Ceremony	Moena
15.12.2013	08:00 - 09:00	Insp. W	Cima Uomo
	10:00 - 12:00	Competition: SG W	Cima Uomo
	12:00	Flower Ceremony SG W	Cima Uomo
	20:30	Medal Ceremony	Predazzo

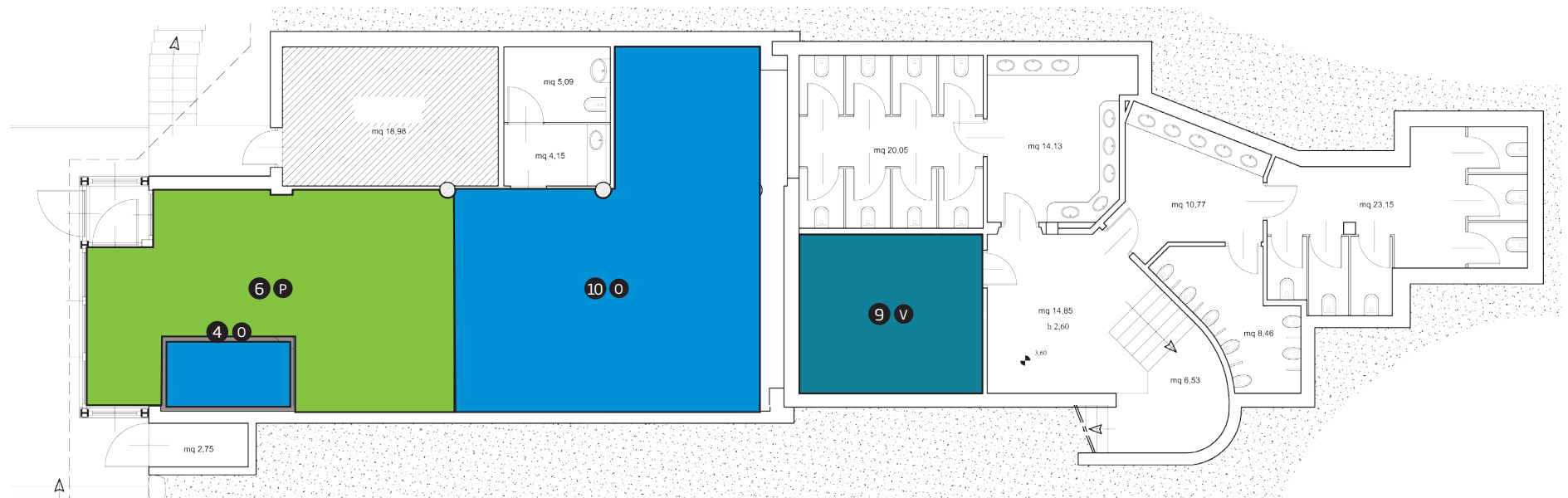
## DAY BY DAY PROGRAM - Pozza di Fassa

Legenda
Technical or CTI meetings & TCM
Unofficial Training
Official Training
Competition
Medal & Flower Ceremony

Day by Day - Alpine Skiing - POZZA DI FASSA			
Date	Time	Activity	Location
16.12.2013	09:30 - 12:00	Unoff. Tr. GS W/M	Ski Stadium Aloch
	17:00	Team Captains Meeting	Art School Val di Fassa
17.12.2013	10:00 - 12:00	Competition: GS M 1 <sup>^</sup> m	Ski Stadium Aloch
	13:00 - 15:00	Competition: GS M 2 <sup>^</sup> m	Ski Stadium Aloch
	15:00	Flower Ceremony GS M	Ski Stadium Aloch
	17:00	Team Captains Meeting	Art School Val di Fassa
	20:30	Medal Ceremony	Predazzo
18.12.2013	10:00 - 12:00	Competition: GS W 1 <sup>^</sup> m	Ski Stadium Aloch
	13:00 - 15:00	Competition: GS W 2 <sup>^</sup> m	Ski Stadium Aloch
	15:00	Flower Ceremony GS W	Ski Stadium Aloch
	17:00	Team Captains Meeting	Art School Val di Fassa
	20:00	Final CTI-UH Meeting (followed by CTI reception)	San Bartolameo
19.12.2013	20:30	Medal Ceremony	Moena
	17:00 - 19:00	Competition: SL M 1 <sup>^</sup> m	Ski Stadium Aloch
	20:00 - 22:00	Competition: SL M 2 <sup>^</sup> m	Ski Stadium Aloch
	22:00	Flower Ceremony SL M	Ski Stadium Aloch
20.12.2013	22:00	Medal Ceremony SL M	Ski Stadium Aloch
	10:00	Team Captains Meeting	Art School Val di Fassa
	17:00 - 19:00	Competition: SL W 1 <sup>^</sup> m	Ski Stadium Aloch
	20:00 - 22:00	Competition: SL W 2 <sup>^</sup> m	Ski Stadium Aloch
	22:00	Flower Ceremony SL W	Ski Stadium Aloch
	22:00	Medal Ceremony	Ski Stadium Aloch



## LAYOUT - Passo San Pellegrino, BASEMENT



- |    |                    |   |                   |
|----|--------------------|---|-------------------|
| 4  | FISU Office        | O | O.C               |
| 6  | Press room         | J | Judges & Referees |
| 9  | Volunteers Area    | V | Volunteers        |
| 10 | Competition Office | P | Press             |



## LAYOUT - Passo San Pellegrino, FIRST FLOOR

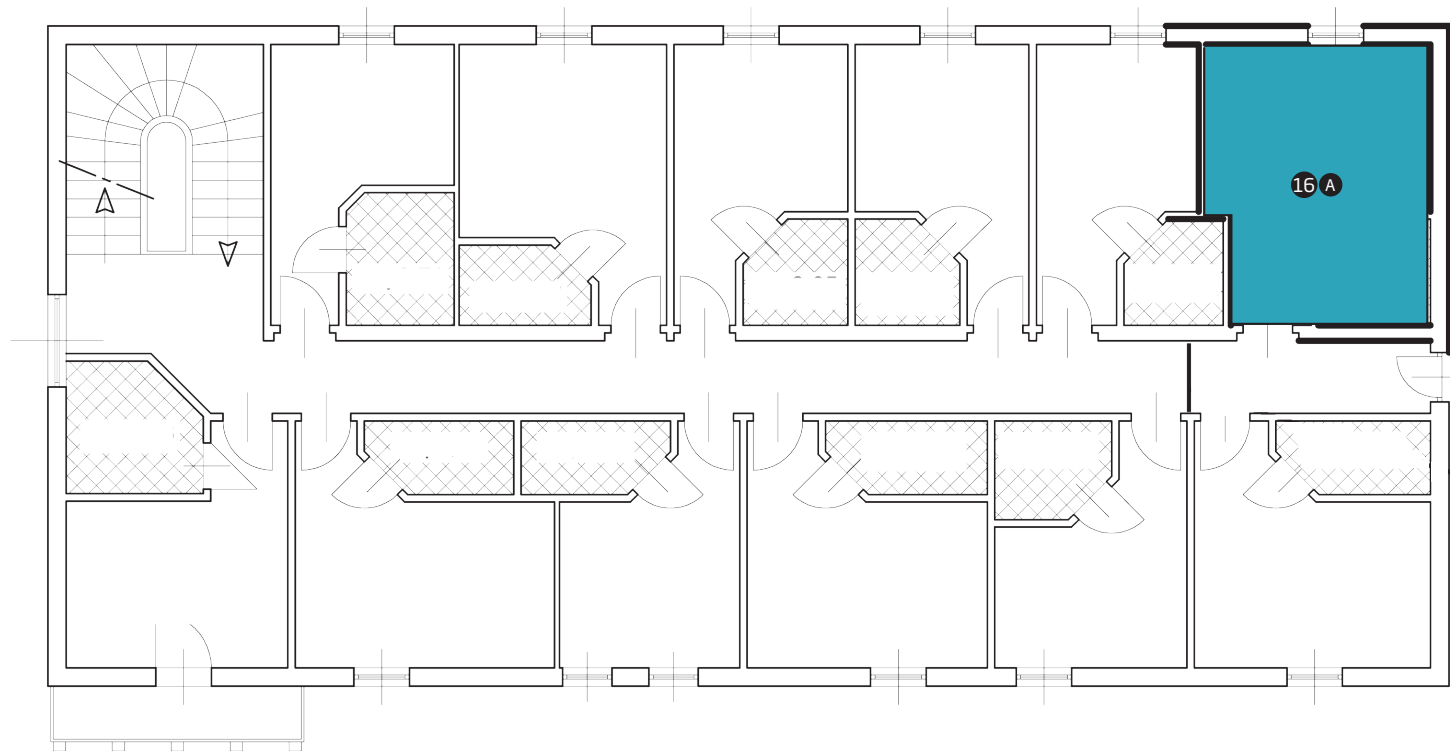


- ① Technical Room
- ⑱ Athletes Lounge
- ⑲ VIP/FISU Family Lounge

- Ⓐ Athletes
- Ⓕ VIP/FISU Family
- Ⓖ Technical Room



## LAYOUT - Passo San Pellegrino, SECOND FLOOR



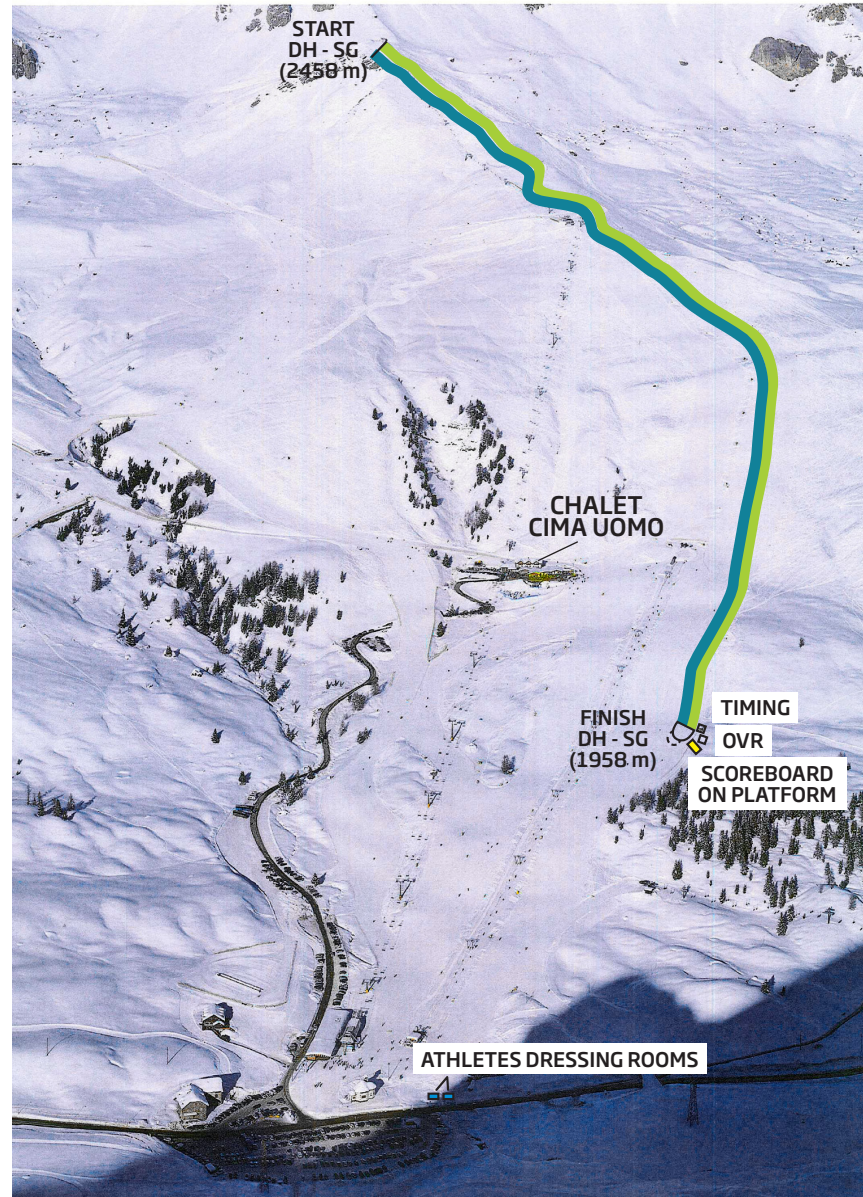
16 Doping Control

A Athletes



## COURSES LAYOUT - Passo San Pellegrino

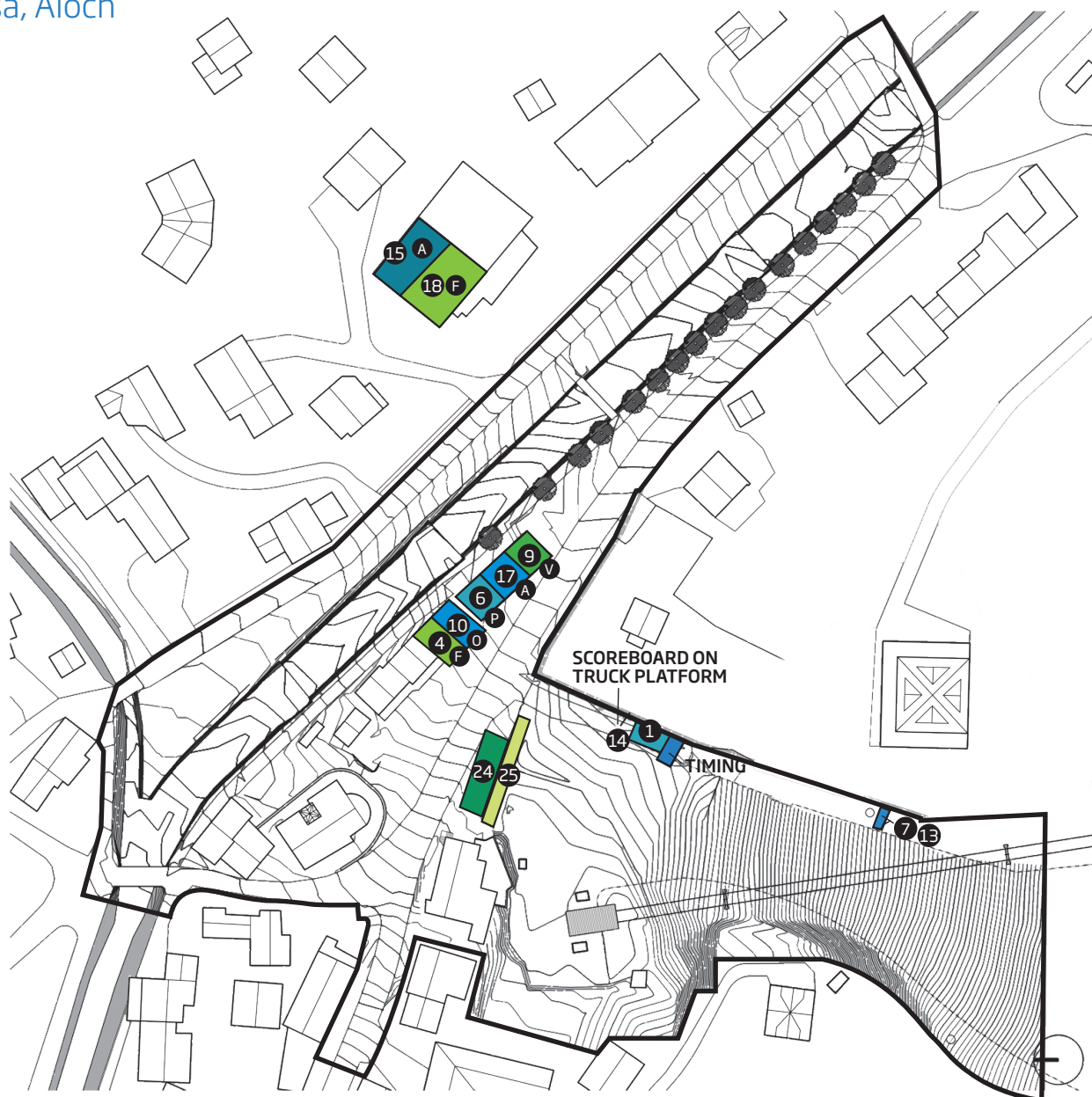
- DH Course  
13/12 W&M
- SG Course  
14/12 M & 15/12 W



## LAYOUT - Pozza di Fassa, Aloch

- ① Technical Room / Optic Fiber
- ④ FISU Office
- ⑥ Press Room
- ⑦ TV Control Room
- ⑨ Volunteers
- ⑩ Competition Office
- ⑬ Timing OVR
- ⑭ Timing Storage
- ⑮ Doping Control
- ⑰ Athletes Lounge
- ⑱ VIP/FISU Family
- ⑳ Tv Compound
- ㉕ Spectators

- Ⓐ Athletes
- Ⓕ VIP/FISU Family
- ⓪ O.C





## LAYOUT - Pozza di Fassa, Aloch

- ① Aloch services
- ② Paths and Pedestrians spaces
- ③ Road network
- ④ Parking area
- ⑤ Field of Play
- ⑥ Chair lift







## PARKING LAYOUT - Pozza di Fassa, Aloch

- A Team /Athletes
- O O.C.
- F VIP/FISU Family
- S Spectators
- T TV
- V Volunteers





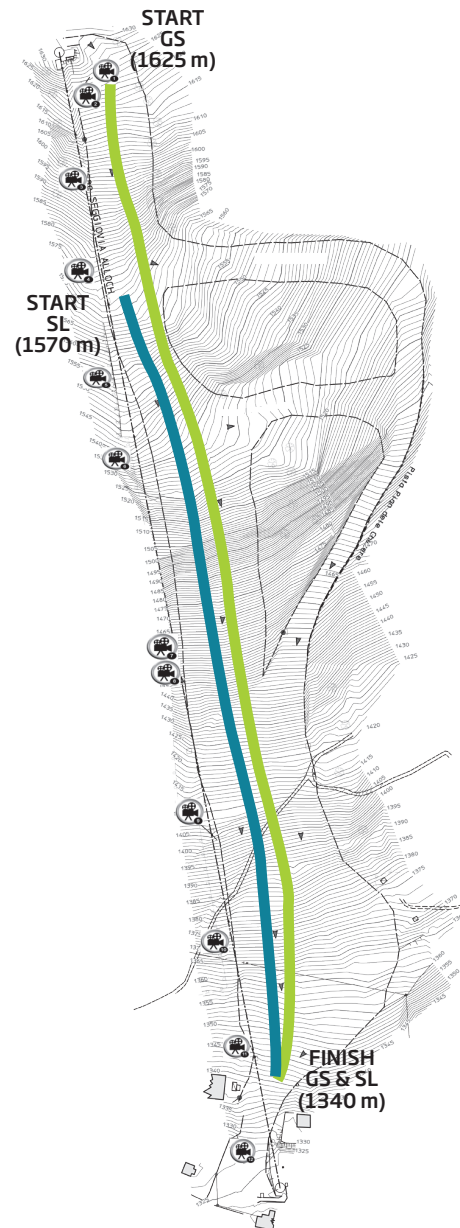
## COURSES LAYOUT - Pozza di Fassa, Aloch





## TV CAMERA POSITION LAYOUT - Pozza di Fassa, Aloch

- GS Course  
17/12 M & 18/12 W
- SL Course  
19/12 M & 20/12 W



**T+**  
**TISSOT**  
SWISS WATCHES SINCE 1853

**160**<sup>th</sup>  
ANNIVERSARY  
1853 - 2013



**T-RACE TOUCH**  
**TACTILE TECHNOLOGY**

**IN TOUCH WITH YOUR TIME**



**compass**



**lap**



**split**

Experience more at [www.t-touch.com](http://www.t-touch.com)

**OFFICIAL**  
**TIMEKEEPER**



# INSPIRED BY YOU



[www.visittrentino.it/it/arrivare](http://www.visittrentino.it/it/arrivare)



**Car:** Brennero - Modena (A22) Motorway



**Airplane:** Verona, Bergamo, Milano or Venezia Airports



**Train:** Trento Train Station

Follow us on  
[www.universiadetrentino.org](http://www.universiadetrentino.org)

...and on social network

