

READING CHART:

Each row between Row 1 and the last row begins and ends with 3 dcs.

All the vertical lines on the chart = 1 dc.

The gray square on the chart = 1 dc.

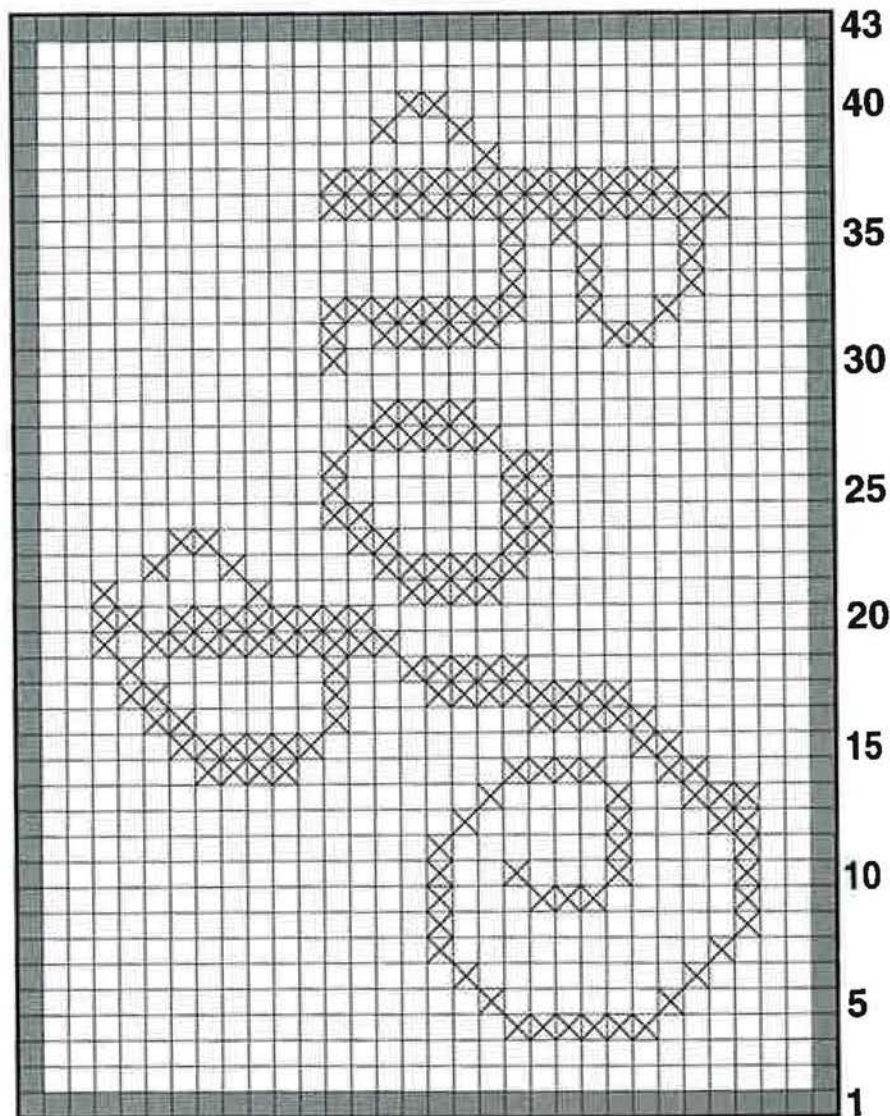
The "X" on the chart = dc2tog.

The horizontal line on the chart - ch 1.

STITCH KEY

- = 1 dc
- Ch 1, sk 1 ch
- ⊗ Dc2tog
- ⊗ Space over X = ch 1, sk dc2tog
- ⊗ X over space = dc2tog in ch space
- ⊗ X over x = dc2tog

FILET CROCHET CHART



CountryWoman

visit us online at countrywomanmagazine.com